

January 2026

City of Coquitlam



Climate Action Plan



Acknowledgments

Coquitlam's Climate Action Plan was created through the collaborative efforts of a broad range of individuals and organizations. The development of the plan was led by the City's Environment Division, working closely with an interdepartmental project support team, who engaged with City Council, First Nations, Council advisory committees, community groups, youth organizations, external partners and the public to ensure the community's values were well represented and reflected in the plan. Consultants supported engagement and greenhouse gas emissions modeling. These individuals and groups provided invaluable insight and feedback throughout the development of the plan, and staff are incredibly grateful for their contributions.

We acknowledge with gratitude and respect that the name Coquitlam was derived from the Һәһ́́́әmihәһ́́́ (HUN-kuh-MEE-num) word kʷikʷә́́́әm (kwee-KWET-lum) meaning "Red Fish Up the River". The City is honoured to be located on the kʷikʷә́́́әm traditional and ancestral lands, including those parts that were historically shared with the ҡ́́́́ә́́́́ (kat-zee), and other Coast Salish Peoples.

Table of Contents

Acknowledgements 2

Building a Climate-Smart Coquitlam ... 4

Our Changing Climate	6
Why Act Now	7
Everyone Has a Role to Play	8
Our Targets	9
Our Emissions	10
Focusing Our Efforts	11

Developing Our Plan 12

Our Climate Action Journey	12
Taking Climate Action Together	14
Plan Framework	16
Guiding Principles	17

Focus Areas 18

How We Move	18
How We Build	20
How We Consume	22
How We Steward	24
How We Lead	26

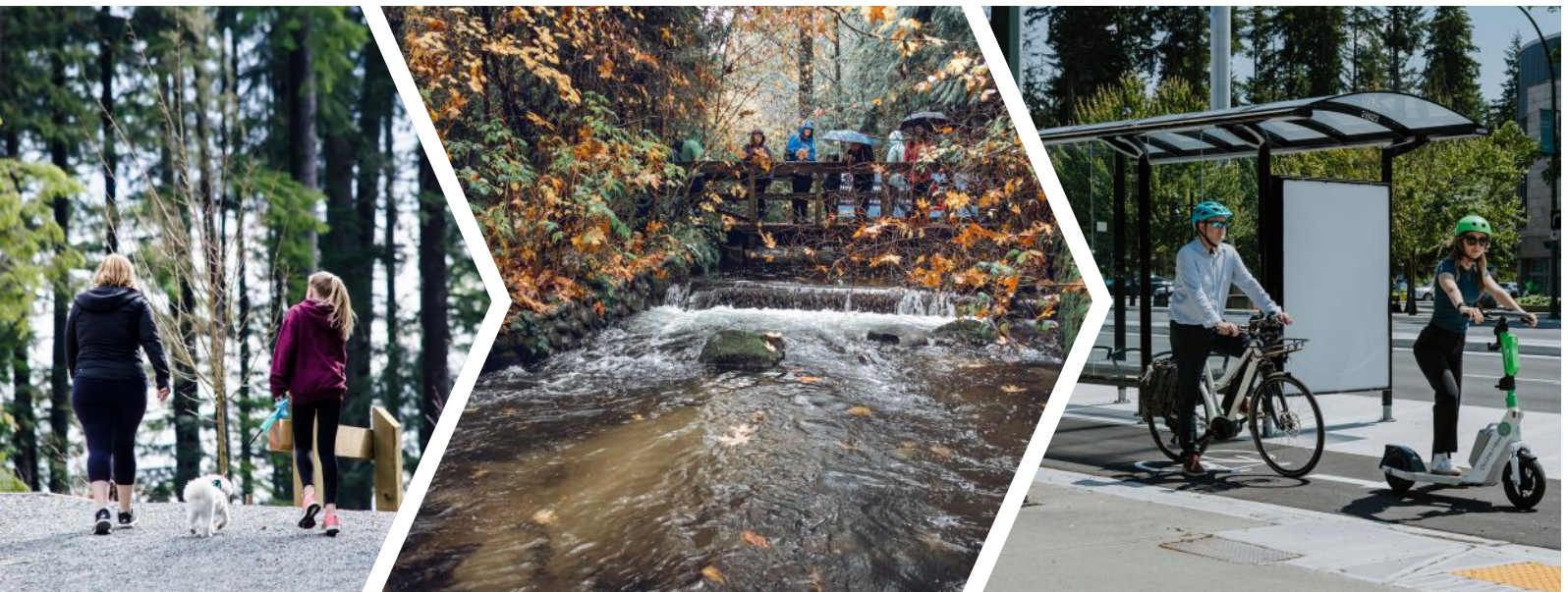
Tracking Our Progress 28

Reporting and Transparency	29
Adapting As We Go	29
A Shared Commitment	30



Building a Climate-Smart Coquitlam

An estimated 160,000 residents call Coquitlam home, living in vibrant and diverse neighbourhoods surrounded by beautiful rivers, parks and forests.



Our city has already taken important steps toward sustainability and is advancing climate-action initiatives that reduce emissions, conserve energy, protect nature and prepare our community for a changing climate.

Yet, global greenhouse gas emissions continue to rise, and the effects are being felt here at home — extreme heat and heavy rainfall — as well as poor air quality from wildfires.

The need for further action is clear. As Coquitlam continues to grow, we must all do our part to reduce greenhouse gas emissions and contribute to the global effort to address climate change. This plan focuses on the actions we can take to cut greenhouse gas emissions, from how we design

and build our neighbourhoods, to the ways we move around our community and the services we rely on every day.

By embedding climate solutions across City plans and operations, we will help lower emissions while creating clear community benefits: cleaner air, healthier homes, more sustainable transportation, good green jobs and thriving parks and natural spaces.

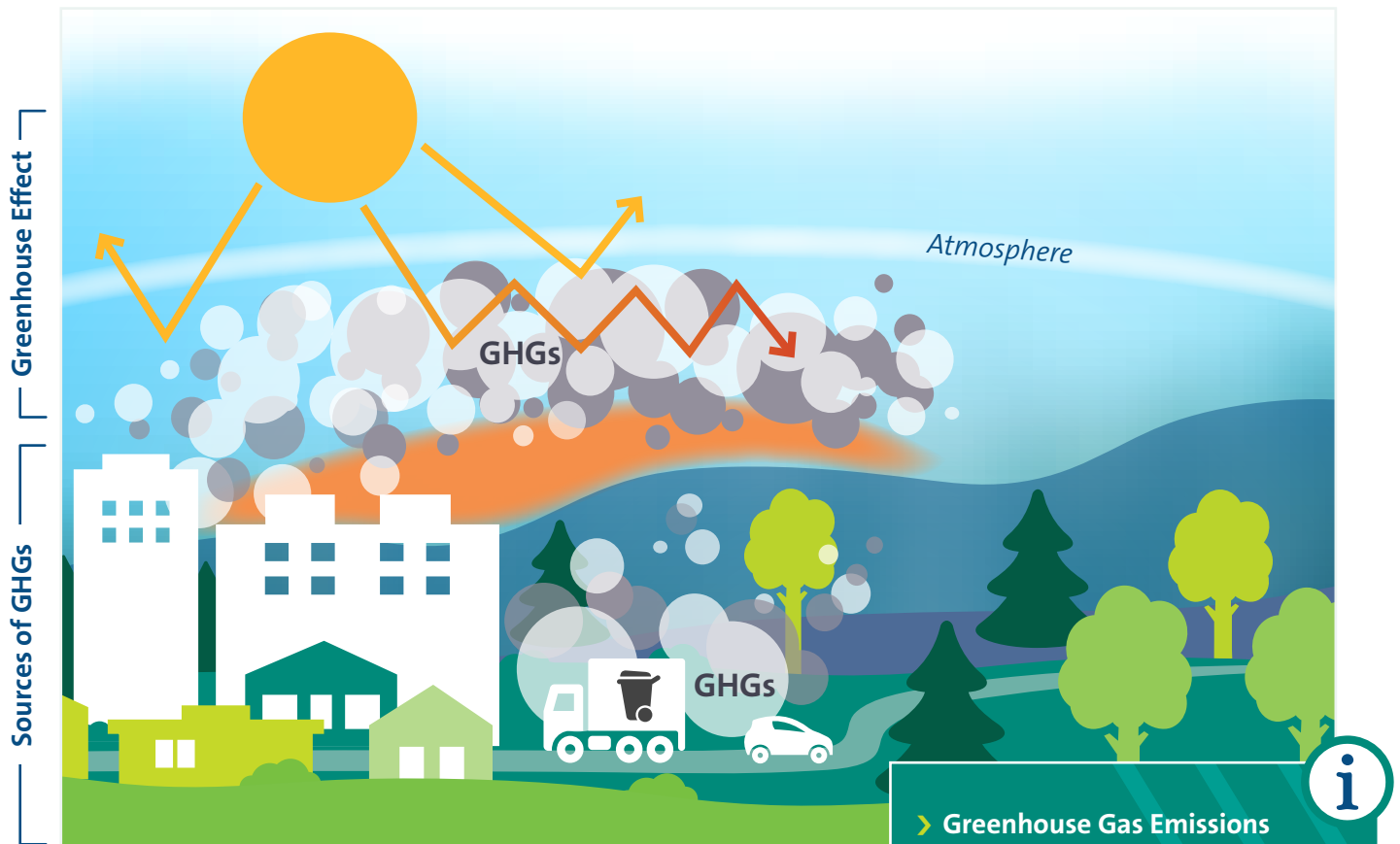


Together, we're building
a climate-smart Coquitlam.



Our Changing Climate

Our climate system is built on a natural balance. Greenhouse gases capture heat and keep the planet warm enough for life to thrive; however, human activities, especially the reliance on fossil fuels to power vehicles and heat homes, along with greenhouse gases from decomposing waste, have disrupted this balance.



The excess buildup of greenhouse gases is trapping more heat than the planet can absorb, causing global warming and driving climate change. Climate change in turn is leading to sea level rise, more frequent extreme weather events, loss of biodiversity and negative impacts on human health, safety and food security.^{1, 2}

¹ Heat-Trapping Pollution (2024). climatecentral.org/climate-matters/heat-trapping-pollution-2024

² Global Warming of 1.5°C. (2018). ipcc.ch/sr15

> Greenhouse Gas Emissions

Gases that trap heat from the sun in our planet's atmosphere, keeping it warm

> Global Warming

An increase in the earth's average surface temperature that occurs when the concentration of greenhouse gases in the atmosphere increases

> Climate Change

Refers to significant, long-term changes in the expected average temperature and weather patterns of a region



Canada is heating up about twice as fast as the global average.⁴

Here in Coquitlam, we are already seeing the effects:



More frequent heat events like the 2021 heat dome that broke temperature records.



More frequent and heavier rainfall and strong storms.

In 2024, an atmospheric river (a heavy rainstorm) dropped more than 250mm of rain in 24 hours.



Longer, hotter dry periods and more days with wildfires and smoke advisories.

In 2022, a wildfire ignited in Minnekhada Regional Park.

Why Act Now

The Intergovernmental Panel on Climate Change (IPCC) warns that to avoid the worst impacts of climate change, global temperature rise must stay below 1.5°C this century.³ Yet, every year, more greenhouse gases are released into the atmosphere, where they stay for decades and lock in future warming.

These changes put our health and safety, local businesses, infrastructure and natural systems at risk. But these outcomes are not inevitable. While adapting to unavoidable changes is essential, by cutting emissions now we can slow and eventually reverse climate change. Climate solutions are within reach and progress is already underway. Acting now means protecting our community and, at the same time, building a better one with cleaner air, healthier homes, more green jobs and a resilient future.

³ IPCC Special Report. (2018). [ipcc.ch/sr15](https://www.ipcc.ch/sr15)

⁴ Canada's Changing Climate Report (2019). [changingclimate.ca/CCCR2019](https://www.changingclimate.ca/CCCR2019)

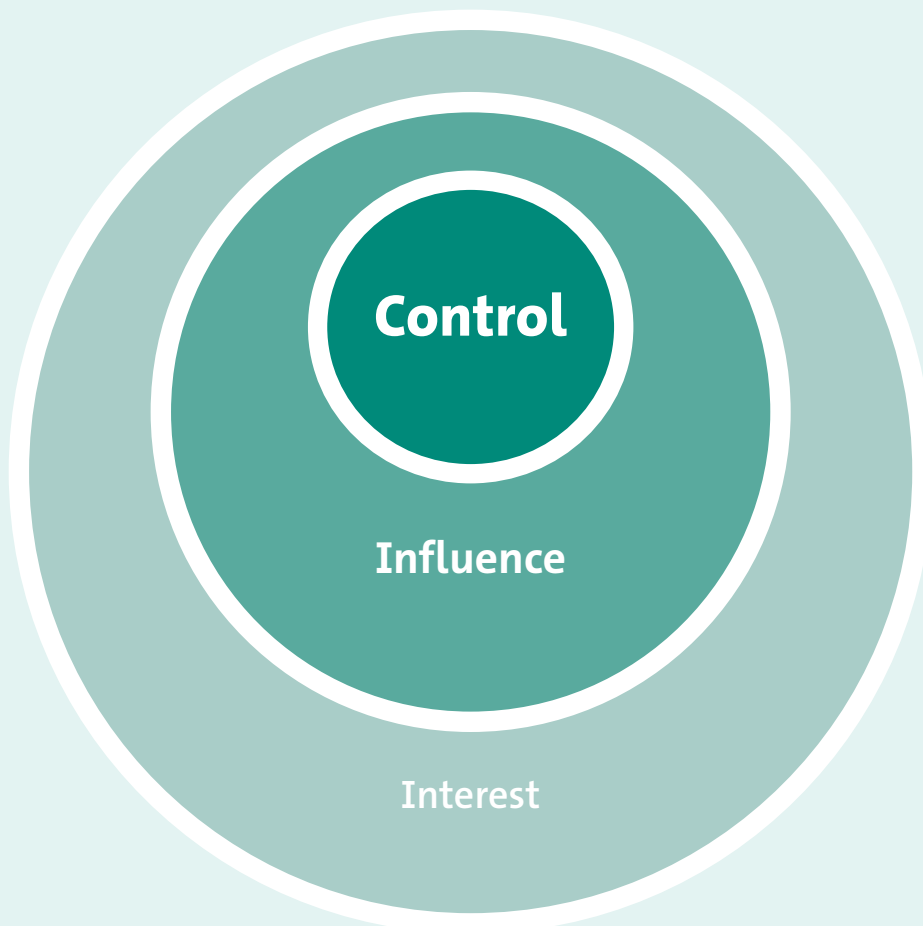
Everyone Has a Role to Play

Taking action is a shared responsibility that requires collaboration across communities, industries, and all levels of government.

While other levels of government have more direct impact on climate change, municipalities have an important role to play. We can reduce our greenhouse gas emissions, and help residents and businesses do the same. We also have the ability to set policy and provide services that protect people and property, and we can plan for a safer, more resilient future for our community.

To ensure Coquitlam's Climate Action Plan is effective, the Plan will focus on actions and initiatives within the City's direct mandate and,

therefore, within our ability to control and influence, while building strong partnerships to extend our impact, and effect change. By working together with residents, community groups, First Nations, businesses, industry and other levels of government, we can reduce risks, unlock opportunities and create a low-carbon, climate-resilient community.



Sphere of Control

Where Coquitlam can directly implement actions such as reducing emissions from civic buildings and managing waste.

Sphere of Influence

Where Coquitlam can have a significant impact on climate action through partnerships, policy and advocacy.

Sphere of Interest

Where Coquitlam is affected by climate-related decisions made by others, and can monitor, learn from and adapt to support progress where possible.

Our Targets

In its Environmental Sustainability Plan, Coquitlam set targets to cut greenhouse gas emissions by 45% below 2007 levels by 2030, and to reach carbon neutrality by 2050.

These goals align with the latest science from the IPCC, as well as the commitments of federal, provincial and regional governments. By setting these targets, Coquitlam is showing leadership at the local level, while joining the global effort to fight climate change.

2030 GHG Target:

 **45%**
of 2007 levels

2050 GHG Target:

 **Carbon
Neutral**

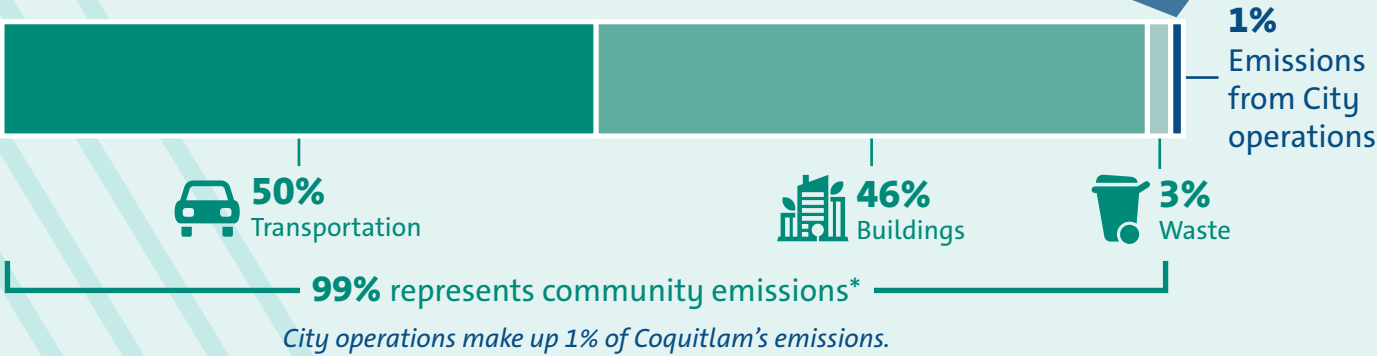
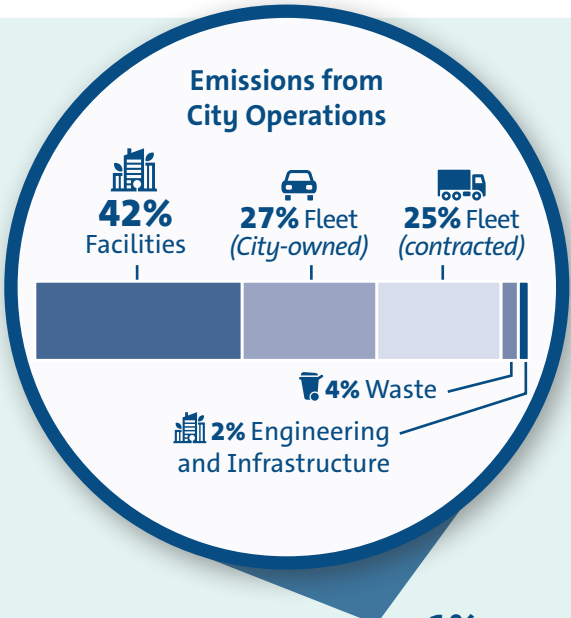


Our Emissions

The City tracks its greenhouse gas emissions to understand the sources of our emissions and help determine what actions we can take that will have the biggest impact. To do so, we use internal records to track emissions from City operations, and data from the Province, Metro Vancouver and other sources to track our wider community emissions. Like most cities in British Columbia, the majority of Coquitlam’s emissions come from fossil fuels used for transportation (e.g., gasoline and diesel) and fossil fuels used in buildings (e.g., natural gas).

Emissions Produced in Coquitlam: *Community and City Operations*

Emissions from City operations are greenhouse gas emissions from City-owned buildings like our community and recreation centres, infrastructure like our pump stations, and vehicles the City operates to deliver services to the community.



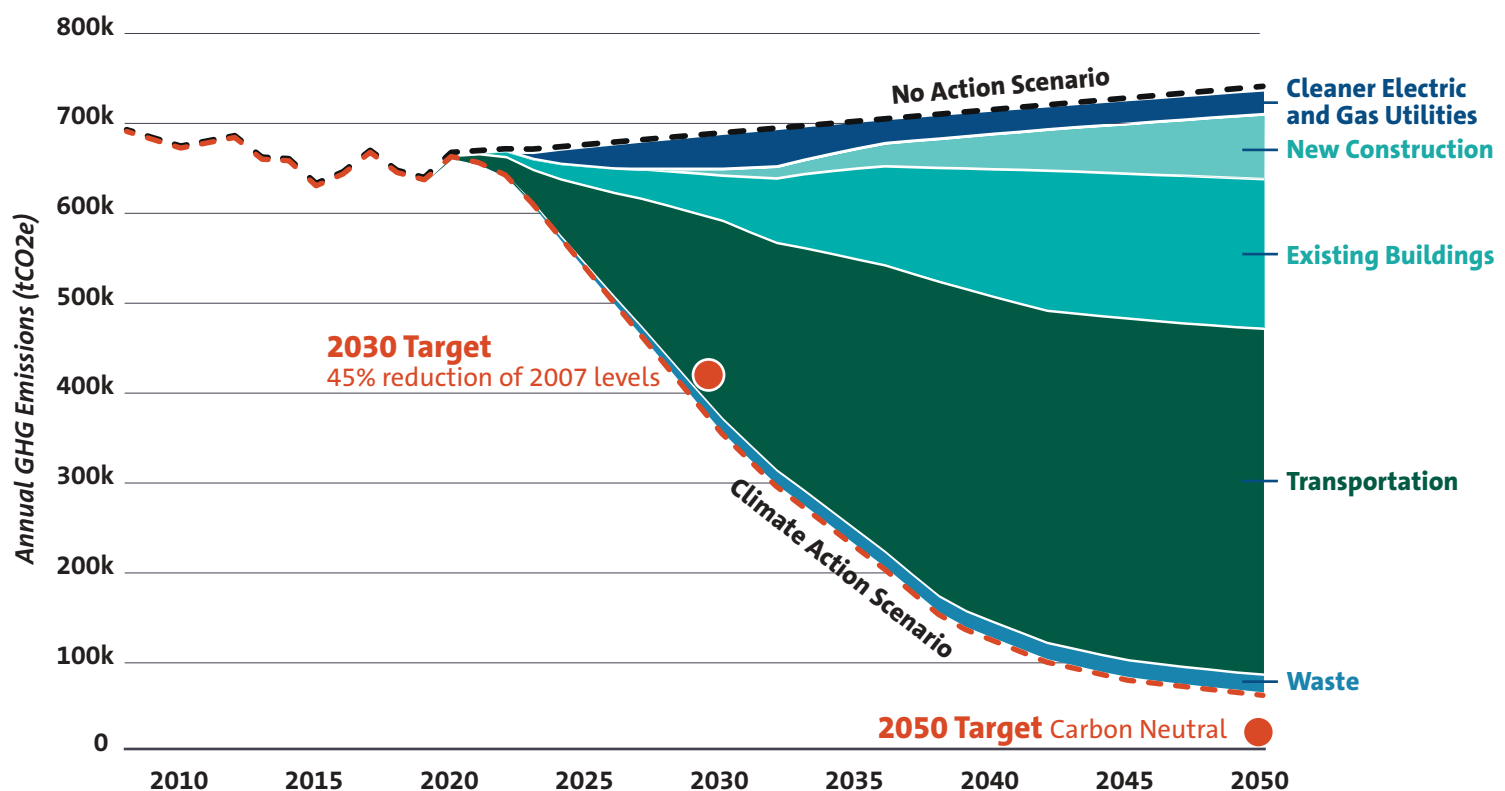
* Source: BC Government Current Community Energy and Emissions Inventory data retrieved in 2025-10-07 at www2.gov.bc.ca/gov/content/environment/climate-change/data/ceei/current-data

Community emissions are greenhouse gas emissions produced from all activities within Coquitlam city limits, such as driving fossil fuel powered-vehicles and heating buildings with natural gas.



Focusing Our Efforts

Even though Coquitlam is a rapidly growing community, the City's greenhouse gas emissions have been declining at a moderate pace from 2007 levels. However, much more work is needed. The remaining emissions have been modelled below to identify where efforts can be focused to make progress towards the City's 2030 and 2050 climate targets. Achieving the modelled level of emissions reductions is not entirely within the City's control — collaboration, support and action from regional, provincial and federal governments is necessary in order to reach our collective climate goals.

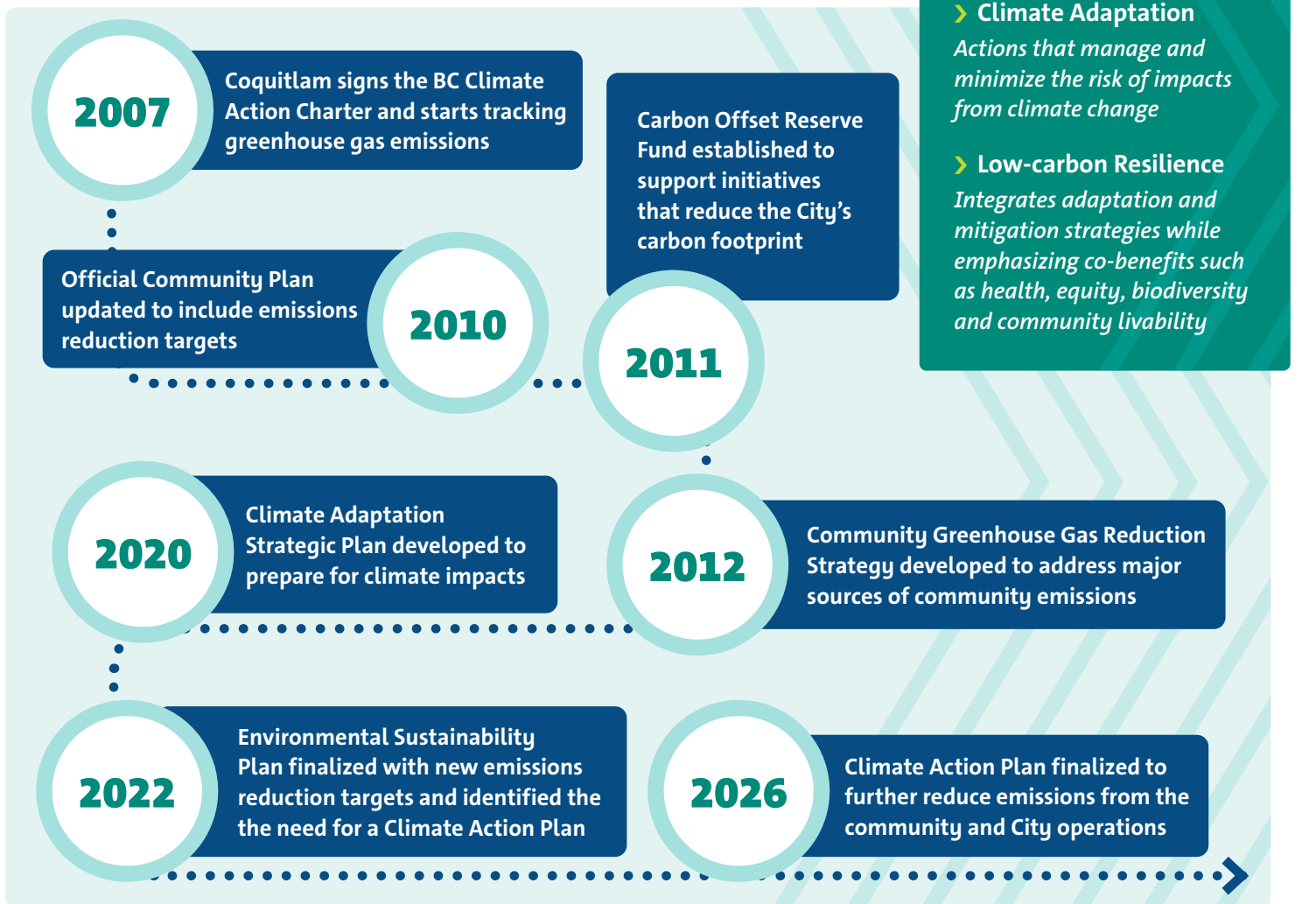


** This model was completed by third-party consultants using available data in 2023, based on current and potential initiatives from all levels of government in 2023. These projections are not an indicator of future outcomes.*

Developing Our Plan

Our Climate Action Journey

Since signing the BC Climate Action Charter in 2007, Coquitlam has been steadily working toward its climate goals, guided by the City's Strategic Plan and Official Community Plan.

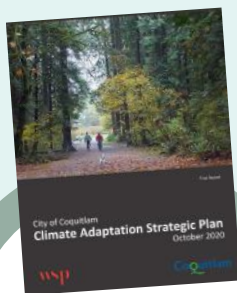


This new Climate Action Plan is the next important step in our climate action journey. It works in collaboration with the Environmental Sustainability Plan and the Climate Adaptation Strategic Plan to more directly focus on mitigation — the steps we can take to reduce or prevent greenhouse gas emissions.

These integrated plans position Coquitlam to better protect people, infrastructure and ecosystems from climate impacts while reducing emissions. Ultimately, these plans work together to help us create a low-carbon, resilient city.



Climate Action Planning



**Climate
Adaptation
Strategic Plan**



**Environmental
Sustainability
Plan**



**Climate
Action Plan**

Aspects of climate action are being progressed through other existing and emerging City plans and strategies. Together, the Climate Action Plan and these related strategies translate Coquitlam's climate goals into action.

**E-Mobility
Strategy**

**Green Fleet
Strategic Plan**

**Strategic
Energy
Management
Plan**

**Transportation
Plan**

**Urban Forest
Management
Strategy**

Taking Climate Action Together

To ensure that the Climate Action Plan's strategies and actions reflect community priorities and build on local strengths, we engaged more than 1,100 community members.

480

People engaged
through 9 public
'pop-ups' and presentations



100

Youth engaged
through 3 youth-focused
events



435

Public survey
submissions
through the City's
engagement portal



1,500+ visits to
LetsTalkCoquitlam.ca/ClimatePlan



48,000+

people reached on the
City's social media channels
(Facebook, Instagram)

What We Heard:

Strong support for climate action

Many community members are already taking action, and **expressed somewhat strong or strong support for each long-term strategy in the range of 74% – 92%.⁵**

- Community members are motivated by a desire to protect the planet and future generations, save money and improve physical, mental and social health.
- Youth voices are leading the call by showing strong interest in climate action and concern for their futures, as well as for vulnerable groups who are disproportionately affected by climate change.
- Barriers to climate action include high costs, limited public transit, restricted access to sustainable goods and services and a lack of information or understanding about climate change and how to act.
- Priorities for implementation include the need for inclusivity and transparent progress tracking.

⁵ *Climate Action Plan: What We Heard Engagement Summary (2024).*
bit.ly/ClimateActionPlanWhatWeHeard





Plan Framework

Shaped by community input, best practices and emissions modelling, the Climate Action Plan identifies five focus areas for reducing emissions. Each area includes strategies and specific actions for implementation, guided by principles that ensure consistency and accountability.



How We Move

- › Increase low-carbon and sustainable transportation
- › Support the transition to low- and zero-emission vehicles



How We Build

- › Expand and retrofit safe, resilient, low-carbon buildings
- › Support renewable energy and low-carbon neighbourhoods



How We Consume

- › Reduce waste and increase diversion
- › Encourage development of a circular economy



How We Steward

- › Support a resilient, robust and healthy urban forest
- › Improve ecosystem health and connectedness



How We Lead

- › Work to make City facilities, fleet, and operations low-carbon and climate-resilient
- › Empower community action through education and engagement
- › Build partnerships and pursue funding opportunities

Strategy Highlights:

14 Strategies and 45 Actions

Co-benefits are included in each focus area. Co-benefits are the “additional” social, economic, and environmental benefits that can occur from taking climate action.

2030 GHG Target

↓ **45%**
of 2007 levels

2050 GHG Target

Carbon Neutral



Guiding Principles

Will shape how the plan is put into action and how we measure success

› Our Full Strategy and Action List is available at coquitlam.ca/ClimateAction



Guiding Principles

The Climate Action Plan's guiding principles were developed from what we heard through community engagement, based on best practices in municipal climate action, and reflect the City's core values and strategic priorities. These guiding principles will shape how the plan is put into action and how we measure success.



Evidence-Based

Effective climate action must be based on scientific knowledge and local understanding, using emissions data, climate projections, risk assessments and performance metrics to guide decisions and ensure actions are responsive to City needs.



Equitable and Inclusive

Climate change can disproportionately impact vulnerable communities. Understanding who is most at risk and why, and working with key partners, where possible, can help support those who need it most, fostering a more cohesive community.



Cost-Effective and Balanced

Climate decisions should be thoughtful and cost-effective, making the best use of public resources and balancing community needs, while reducing long-term risks and costs for the community.



Adaptable

Remaining flexible and responsive to both expected and unforeseen challenges, as well as emerging opportunities, climate action can foster innovation and ensure efforts are effective now and in the future.



Low-carbon Resilience

Climate action requires integrated solutions to reduce emissions and build resilience, creating a low-carbon future while protecting the community from current and future climate risks.



Shared Responsibility

Meaningful climate action depends on collaboration across all levels of government, industries and communities, which requires working together internally and externally to align efforts, advocate for supportive policies, share knowledge and accelerate impact.



Reconciliation

Climate action provides an opportunity to build meaningful relationships with Indigenous peoples and communities. It creates space for collaboration, recognizing that Indigenous perspectives are important in addressing the causes and impacts of climate change.

How We Move



In 2022, 81% of transportation emissions in Coquitlam came from vehicles.



Transportation accounts for half of Coquitlam's community emissions, with most emissions coming from personal vehicles. By shifting from fossil fuels to low- or zero-emission vehicles, and by making it easier for people to walk, roll, scoot, cycle and take transit, we can cut emissions while improving health and quality of life.

We're already making headway. Guided by our Environmental Sustainability Plan and Transportation Plan, we're expanding sustainable transportation options across the city. New sidewalks, walkways, micro-mobility lanes and multi-use pathways are making it easier to get around without a car, and e-mobility choices are growing in our neighbourhoods, including shared e-mobility options. With four SkyTrain stations, Coquitlam is well positioned to offer sustainable travel options in transit-oriented areas, but to reach our climate and transportation targets, we'll need to take further action.

Residents were clear during the engagement process that expanding options for walking, using

bikes and scooters, accessing improved transit and accelerating zero-emission vehicle adoption are top priorities, alongside removing barriers to these options like affordability and safety concerns.

Our vision is a cleaner, quieter, better-connected Coquitlam, where low- and zero-emission vehicle travel is the norm for longer trips; safe, accessible networks of sidewalks and separated bike lanes link neighbourhoods for shorter trips; and residents can easily reach amenities, green spaces, schools and jobs through sustainable transportation. The actions in the **How We Move** priority area are steps to turn this vision into reality, reducing emissions and creating a healthier, more connected community.



Celebrating Success

Guildford Way Transportation Improvements



Completed in spring 2025, the Guildford Way project delivered wider sidewalks, protected bike lanes and a fully protected intersection at Pinetree Way, enhancing safety and intersection operations for everyone traveling along this key Tri-Cities corridor.

Example Actions

#	ACTIONS	TIMELINE
M1.1	Complete and implement the Transportation Plan and E-Mobility Strategy.	<i>Ongoing</i>
M1.3	Advocate with other local jurisdictions to TransLink and the Province for increased funding for more accessible, reliable and affordable public transit and active transportation.	<i>Ongoing</i>
M2.2	Explore options to expand the public electric vehicle charging network on city-owned land and streets, and explore related funding and income-generating opportunities.	<i>Ongoing</i>
M2.3	Support the expansion of the electric vehicle charging network by creating a supportive policy environment, addressing regulatory barriers and communicating opportunities and information to businesses, stratas and institutions.	<i>Medium Term</i>
M2.4	Partner with other levels of government to inform businesses about the opportunities and advantages of transitioning to low-carbon and zero-emissions medium and heavy-duty vehicles.	<i>Short Term</i>

➤ See the full list of *How We Move* strategies and actions at coquitlam.ca/ClimateAction

Co-Benefits



Reduces congestion



Reduces costs/
increases savings



Enhances human health and well-being

What You Can Do

- Get involved! Share your ideas as we plan new micromobility lanes, shared pathways, and other ways to get around the City.
- Choose sustainable options like walking, biking, rolling, or transit.
- Plan ahead to avoid unnecessary car trips.

How We Build



In 2022, 93% of building emissions in Coquitlam came from natural gas used for heating and hot water.



Buildings are at the centre of our daily lives — they're where we live, work, learn and gather. They also use a lot of energy and are the second-largest source of emissions in Coquitlam.

Most of these emissions come from burning fossil fuels like natural gas for heating and hot water. By making our buildings more efficient and switching to low-carbon energy sources like electricity, we can cut emissions while also adding cooling to keep homes and workplaces safe and comfortable all year.

Where we build matters too. Complete, well-designed communities bring shops, parks and services close to home, making it easier to stay local and use active or sustainable travel to reach the things we need.

There is strong community support for improving our buildings, from making them more energy efficient to reducing emissions, while also balancing other priorities like resilience and affordability.

Action is already underway. Provincial rules like the Energy Step Code and Zero Carbon Step Code are setting higher standards for new construction, helping ensure that buildings are low carbon and resilient. The City is also working with other levels of government and community organizations to connect residents with information, rebates and incentives for energy-efficient upgrades and retrofits that reduce emissions and provide cooling.

Our vision is a community where new buildings are constructed using low-carbon materials and processes where possible. In addition, all new and existing homes and buildings are thermally safe, comfortable, healthy, efficient and affordably powered by low-carbon energy sources so Coquitlam is more livable, sustainable and resilient.



Photo Credit: Metro Vancouver Housing

Celebrating Success



Since 1980, the Le Chateau apartment in Coquitlam has provided supportive living for families, seniors and individuals with disabilities. Through collaborative efforts by the Pembina Institute, the Province, Metro Vancouver Housing Corporation and the BC Non-Profit Housing Association, the building is undergoing a deep energy retrofit and will be upgraded with electric heat pumps, energy-efficient windows and doors, and new insulation to enhance tenant comfort and improve safety. These retrofits will significantly reduce the building's energy use and greenhouse gas emissions.

Example Actions

#	ACTIONS	TIMELINE
B1.3	Explore opportunities to encourage innovative, low-carbon and resilient construction, including heating and cooling solutions in new residential construction.	<i>Medium Term</i>
B2.1	Explore ways to support and promote programs and initiatives that help protect vulnerable individuals from extreme weather events including ones that support access to cooled indoor and cleaner air spaces, as well as income-qualified programming through government and utility partners.	<i>Short Term</i>
B3.2	Continue to integrate a climate and sustainability lens into new and updated land-use plans by developing complete and well-connected neighbourhoods that offer a mix of land uses, and that support transit and active transportation.	<i>Ongoing</i>
B4.3	Work with utility partners to identify capacity-constrained neighbourhoods and advocate for the prioritization of electrical service upgrades that support housing growth.	<i>Ongoing</i>

➤ See the full list of *How We Build* strategies and actions at coquitlam.ca/ClimateAction

Co-Benefits



Supports green
job creation



Reduces extreme
temperatures



Improves community
livability and vitality

What You Can Do

- Switch to LED lighting and look for appliances and electronics with the ENERGY STAR certification.
- Explore incentives and rebates to make your home or business more energy efficient.
- Consider climate-friendly home retrofits like a heat pump.



Since it began in 2016, Coquitlam's House Moves initiative has helped facilitate the relocation of 36 homes, keeping them from being demolished and saving thousands of tonnes of materials from the landfill.

How We Consume



Photo Credit: Nickel Bros

How we buy, use and dispose of materials, products and resources shapes the amount of waste we create and the emissions we generate. Waste that ends up in the landfill is the third-largest contributor to Coquitlam's emissions.

The journey of many items begins with energy-intensive production, continues through long-distance transportation, and often ends in landfills. Along the way, each stage of an item's life contributes to greenhouse gas emissions. These add up and are significant when we consider the materials and products we use across our community.

Community members have told us that reducing waste and supporting a circular economy is a priority. The City is taking action in many ways including participating in regional waste planning, taking steps to improve waste diversion in City waste collection services, working with waste

collection contractors to cut emissions, continuing education and training and facilitating waste reduction and reuse initiatives like repair cafés and city-wide garage sales. These efforts are helping to reduce emissions and build the foundation for a more circular economy, but there is more to do.

Our vision is to build a city with a sound circular economy where we use less, waste less and ensure that goods and materials from building supplies and household items to appliances and food are valued, reused where possible and kept out of landfills. Together, these actions will reduce emissions, save residents money and support a more resilient community.



Celebrating Success



Every year, the City's efforts to engage and educate the community play a key role in reducing waste and supporting a circular economy. These efforts include City-wide Garage Sales and Repair Cafés that promote reuse and repair, along with school partnerships that have brought climate and waste education to more than 50 classrooms. These initiatives aim to inspire long-term awareness and encourage positive behaviour change in the community.

Example Actions

#	ACTIONS	TIMELINE
C1.1	Participate in the regional Integrated Solid Waste and Resource Management Plan update and leverage this work to develop, implement and promote circular economy initiatives.	<i>Short Term</i>
C1.2	Assess Coquitlam's building stock to identify opportunities to reduce and divert construction and demolition waste, and develop policies and approaches that prioritize the reuse, relocation and deconstruction of existing buildings, as well as the reduction of waste in new construction.	<i>Short Term</i>
C1.3	Explore Coquitlam's role in supporting and advocating for a sustainable, equitable and resilient food system, including improving access to local food and advancing strategies to reduce and recover food waste.	<i>Ongoing</i>
C1.4	Develop initiatives to reduce solid waste generation and increase diversion at all City facilities, as well as City-hosted and City-led events.	<i>Medium Term</i>

➤ See the full list of *How We Consume* strategies and actions at coquitlam.ca/ClimateAction

Co-Benefits



Fosters innovation and green, clean industries



Reduces waste, optimizes resources



Promotes a circular economy

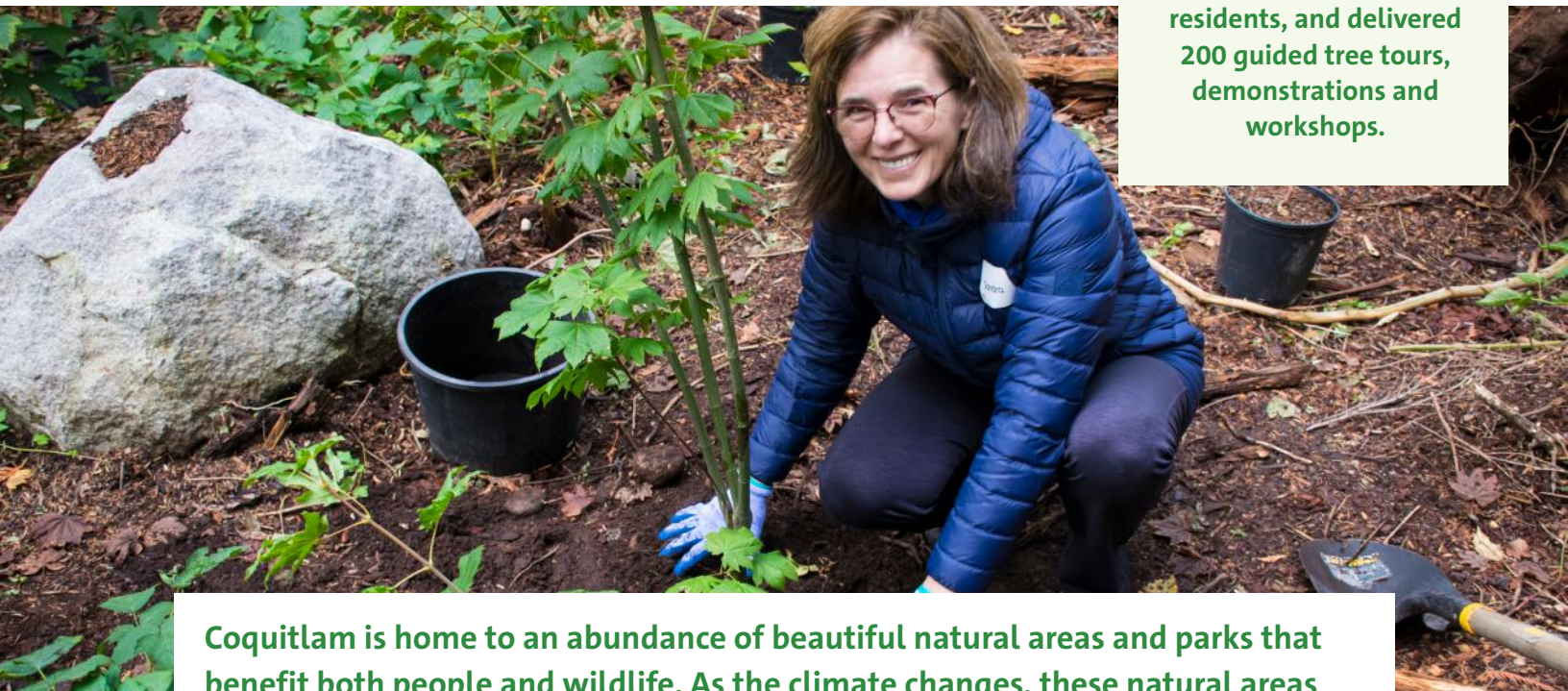
What You Can Do

- Bring broken items (like clothes or electronics) to one of Coquitlam's Repair Cafés.
- Make it a habit to bring your own cups, utensils and reusable bags to avoid single-use items.
- Buy from local businesses and look for sustainably-produced products.

How We Steward



In 2024, Coquitlam's Tree Spree program donated over 1,200 trees across the city to residents, and delivered 200 guided tree tours, demonstrations and workshops.



Coquitlam is home to an abundance of beautiful natural areas and parks that benefit both people and wildlife. As the climate changes, these natural areas play a vital role in protecting biodiversity, reducing heat, managing stormwater and supporting community well-being.

Green spaces are essential for biodiversity and for providing habitat for fish and wildlife. They also make our city more livable by improving air and water quality, managing stormwater to reduce flooding and offering shade and cooling — benefits that are becoming even more important as we experience the impacts of climate change. Natural areas also support public health by creating welcoming, restorative spaces where the community can gather, play and connect with nature.

Residents place a high value on protecting, restoring and enhancing the city's natural areas and ecosystems and agree that it's important these spaces remain accessible for everyone to enjoy. The City is already taking action by keeping waterways clean through monitoring and pollution prevention, as well as protecting wildlife

and habitat through land-use regulations and urban wildlife management programs. Coquitlam is also planting native, climate-resilient species that support biodiversity, while expanding and caring for urban forests and green spaces across the community. As part of this effort, the City is developing an Urban Forest Management Strategy, which will outline how the City and community can work to enhance and sustain a resilient urban forest.

Action is needed to build on the work underway in order to continuously monitor and strengthen how we care for natural areas, especially in the face of a changing climate; this will help Coquitlam continue safeguarding these vital benefits for today's residents and species, while ensuring future generations inherit healthy, thriving green spaces.



Celebrating Success



Since 2012, the City has been collecting water quality data from the Coquitlam River and across the City to monitor watershed health and identify long-term trends, including those related to climate change. This data is shared with partners across the watershed — such as environmental stewardship groups and First Nations — to support collaborative initiatives like the kwikwəłəm Salmon Restoration Program.

Example Actions

#	ACTIONS	TIMELINE
S1.1	Complete and implement the City's Urban Forest Management Strategy.	<i>Ongoing</i>
S1.2	Identify opportunities to integrate climate-resilient planting, shading features and landscaping into design and improvement projects to enhance cooling, storm water management and storm resilience.	<i>Ongoing</i>
S2.1	Continue to share data and information with other levels of government to support ecosystem connectivity planning and monitoring.	<i>Ongoing</i>
S2.3	Increase biodiversity and resilience of City parks and greenspaces.	<i>Ongoing</i>
S2.4	Work with regional partners to advance nature-based solutions to address climate risks and hazards.	<i>Ongoing</i>

➤ See the full list of *How We Steward* strategies and actions at coquitlam.ca/ClimateAction

Co-Benefits



Enhances human health and well-being



Improves water retention and absorption



Enhances biodiversity

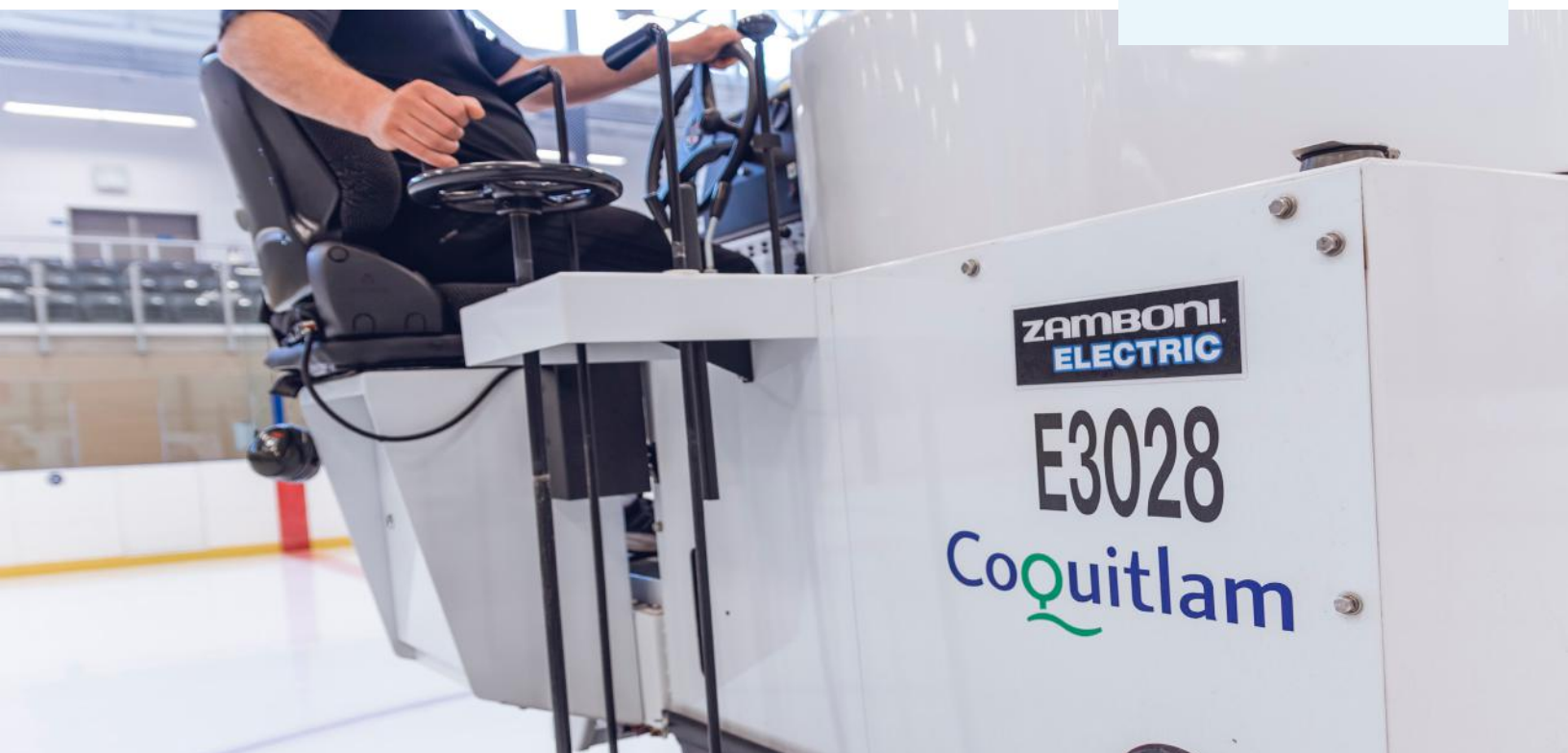
What You Can Do

- Volunteer to keep our creeks clean through our [Adopt-A-Catch Basin](#) and [Storm Drain Marking](#) programs.
- Volunteer for one of the many environmental stewardship groups in our community.
- Plant trees suitable for our future climate.

How We Lead



As of 2025, the city has 44 electric vehicles and 42 EV chargers in its fleet.



Coquitlam recognizes the importance of leading by example, reducing emissions across facilities, operations and services while encouraging and supporting residents, businesses and industry partners to do the same.

Although City operations account for a small share of Coquitlam's total emissions, we are committed to reducing emissions from civic facilities, fleet and services while adapting to the impacts of climate change. Through innovation, partnerships and community engagement, the City aims to foster a culture of climate leadership that empowers residents to take action and share in the pride of our progress.

Work is already underway. New facilities are being designed with low-carbon resilience in mind, while existing facilities are being retrofitted as they come due for renewal, including energy efficiency upgrades and new technologies like heat pumps.

The City is also advancing a Green Fleet Strategic Plan to guide the transition to a low-carbon municipal fleet, replacing fleet vehicles with zero-emissions vehicles when possible and shifting to low-carbon fuels. Staff across the organization are integrating sustainability and climate action into their daily work, recognizing that achieving our climate goals requires collaboration across all departments.

Our long-term vision is that all City assets are low-carbon and climate resilient, climate action is embedded in City processes and residents, community groups, businesses and industry partners are actively engaged in this work alongside us.



Celebrating Success



Reopened in spring of 2025, Coquitlam's Mundy Park Pool delivers a modern, energy-efficient recreation facility for the community. Featuring a heat pump system, efficient pool covers and other sustainability upgrades, the facility reduces greenhouse gas emissions while supporting community health.

Example Actions

#	ACTIONS	TIMELINE
L1.2	Continue to assess existing facilities for opportunities to improve energy efficiency, reduce emissions and enhance climate resilience, and implement this work as part of asset renewal and capital planning processes, leveraging external funding opportunities where possible and realizing cost and operational benefits.	<i>Ongoing</i>
L2.1	Transition fleet vehicles and fuel sources to low-carbon alternatives in alignment with the Green Fleet Strategic Plan and fleet replacement schedule.	<i>Short Term</i>
L3.2	Advocate to the Province for new and enhanced funding mechanisms and programs to support local climate action initiatives, including ones that prioritize equity-deserving groups.	<i>Ongoing</i>
L4.2	Integrate new climate and sustainability considerations into new or renewed policies and plans including the Official Community Plan.	<i>Ongoing</i>
L5.4	Explore ways to equip and empower youth to navigate projected climate impacts through training and increased youth participation in climate discussions and initiatives.	<i>Short Term</i>

➤ See the full list of How We Lead strategies and actions at coquitlam.ca/ClimateAction

Co-Benefits



Enhances equity and social inclusion



Improves community livability and vitality



Improves climate awareness and access to data and information

What You Can Do

- Subscribe to the Coquitlam Current E-Newsletter.
- Share your ideas on Let's Talk Coquitlam.

Tracking Our Progress

The Climate Action Plan will be implemented by staff across City departments in partnership with residents, community organizations, other levels of government, business leaders and industry partners.

As we strengthen partnerships and take action together, tracking our progress and emissions will be essential to staying on course and meeting our climate targets. Key Performance Indicators (KPIs) have been identified for each focus area to track progress. These indicators build on a number of KPIs we already track for our existing sustainability and climate action plans.

Example Indicators:

How We Build

of buildings meeting or exceeding Step Code requirements



How We Lead

% of greenhouse gas emissions from City operations



How We Move

% of all trips made by sustainable modes of travel (walking, cycling, rolling, and public transit)



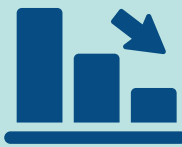
How We Steward

of trees and shrubs planted on City land



How We Consume

of buildings relocated or deconstructed rather than demolished





Reporting and Transparency

We will track and review progress on our actions, and share updates with the community through channels such as our website and reports to Council.

Our reporting will highlight:

- The status and outcomes of actions
- Investment, funding and resources required, as well as available new opportunities
- Successes and lessons learned
- Updated emissions inventories
- Progress on KPIs

Adapting as We Go

Climate action is always changing as new ideas and technologies emerge and the federal and provincial policy landscape shifts.

To keep pace, the City will regularly review and update the Climate Action Plan so we can respond to challenges and make the most of new opportunities. Ongoing learning and engagement will help make sure actions continue to be effective, efficient and equitable.



A Shared Commitment

The success of the Climate Action Plan depends on collective effort.

All levels of government, utilities, businesses, community groups and residents have a role to play. By working together, we can ensure our community remains sustainable, resilient and livable — today and for generations to come.







City of Coquitlam
Engineering and Public Works Department
Environment Division

3000 Guildford Way
Coquitlam, B.C. V3B 7N2

604-927-3500
enviroplan@coquitlam.ca

coquitlam.ca