



PHARO

CATTLE COMPANY®

2026

AI Sire Directory



Your Source for Certified Tenet® AI Sires



A.I. — Help or Hindrance

Many progressive cow/calf producers have been using artificial insemination (AI) in an attempt to improve the profitability and the genetic base of their cowherd. Unfortunately, AI has taken most commercial ranchers in the wrong direction. The more they AI, the less profitable and less efficient their cowherd becomes. Does this mean that AI has no value and won't work?

Absolutely not, but AI will never be any better than the bulls you are using. There are bulls that will help you meet your breeding objectives and there are bulls that will actually hinder your breeding program. It's up to you to select the right bulls. A word of caution, though. Don't be misled by pretty pictures and big numbers.

Although most of the bulls available through the major AI companies take pretty side-view pictures and have impressive EPDs, they don't have what the commercial rancher needs. For the most part, they are tall, slab-sided bulls with too much birth weight, too much growth, too much milk and not near enough guts, muscle and fleshing ability. They were produced by high-maintenance, pampered cows in a high-input, artificial environment. A bull with a frame score under 6 is a rarity. So, unless you want to produce high-maintenance, hard-keeping cows that weigh 1400 to 1800 pounds, these bulls simply won't work.

We suggest you use bulls whose mothers, sisters and daughters are proving themselves in real-world ranching environments. The bulls you use should be coming from cowherds that are treated as tough as or tougher than your own. How else are they going to be able to move your cowherd in the right direction?

An AI program can be a very cost effective tool to improve the profitability and the genetic base of your cowherd. It will allow you to sample some of the best genetics available without actually owning the bulls. However, if you don't select and use the right bulls, it will be a total waste of time and money.

~ *Kit Pharo*



PHARO CATTLE COMPANY®

Your Source for Low-Input, Grass-Based Genetics

If you are serious about reducing cow size, and if you are serious about increasing thickness and fleshing ability, and if you are serious about calving ease and cow efficiency, and if you are serious about increasing early maturity and grass efficiency, then you have come to the right place. Our goal is to provide the genetics that will help you minimize expenses and maximize profits. We have the biggest and best selection of low-input, grass-based genetics in the world!

Moderate Size...

Contrary to popular opinion, it's impossible to produce an efficient, easy-fleshing, 1200-pound cow with bulls that are over a 4 frame score. Although we've seen some 6-frame cows that only weigh 1200 pounds, it's not a pretty sight. They are tall, thin, gutless cows that are very frail looking.

Many people mistakenly believe any cow under a 5-frame is a miniature. They're wrong! Just for the fun of it, we challenge you to take a tape measure and see how tall 48 or 50 inches really is. You'll discover that 3 and 4-frame cows are not really as small as you thought they were. When you add some thickness to a smaller-framed cow, you have a package that is without equal. Our mature 3 and 4-frame cows weigh 1100 to 1250 pounds. That's big enough!

Frame Score	Mature Cow Hip Height	Mature Bull Hip Height
2	46	50
3	48	52
4	50	54
5	52	56
6	54	58

Calving Ease and Fertility...

If you are concerned about profitability, then calving ease and fertility are the two most important traits you should be selecting for. It doesn't matter how much growth potential a calf has if it is born dead. Dead calves have distressingly low weaning weights. Likewise, open cows produce zilch in the way of weaning weights. True fertility is more a function of fleshing ability than anything else — and fleshing ability is more a function of low maintenance requirements than anything else. Maintenance requirements *must* be met *before* reproduction can take place.

DNA Tested...

In addition to getting an **Igenity DNA Profile** on our bulls, we are now DNA testing our bulls for **A2 Beta Casein** and **TENET®**. A2/A2 beta-casein is a milk protein that improves the nutritional value and digestibility of the cow's milk. An A2/A2 cow can theoretically raise a bigger calf with less milk than A1/A2 or A1/A1 cows. TENET® may prove to be the biggest game changer in the history of the beef industry. Animals that are Certified TENET® have the genetics for the highest level of beef tenderness. Compared to other bull producers, we excel in both of these areas. TENET® is a registered trademark of Callipyge Genetics, LLC, used by Pharo Cattle Company® with permission. All other uses require approval from Callipyge Genetics, LLC.

Grass-Based Genetics...

We have put together the biggest and best selection of low-input, grass-based genetics in the world. In addition to Angus and Red Angus, we have some Polled Hereford, South Poll and Mashona bulls. We also have some Heat-Tolerant Composite bulls and Tarentaise Composite bulls. There are a total of 87 bulls to choose from — with prices to fit every budget.

Quantity Discounts: 10% Discount on 250 units and 20% Discount on 500+ units

Free Shipping (continental US) on orders of 100 straws or more (savings of \$180). To place an order, call us at **800-311-0995** or send an email to **Bulls@PharoCattle.com**.

~ SIRE INDEX ~

Angus SiresPage

Alamo	26
Back 2 Basics	21
Bam Bam	17
Bench Mark	15
Bo Jangles	24
Bullseye	15
Cha Ching	11
Cinch	22
Colorado Rebel	26
Commissioner	10
Daily Double	5
Double Your Profit	18
Down Town	13
East Bound & Down	14
EZ Come EZ Go	11
Fat Chance	24
Fortune	22
Galleon	19
Gambino	31
Gamechanger	30
Hayden	12
Hickory	6
High Five	13
High Point	20
High Roller	20
Hobnob	6
Jacks Fork	7
Jake	21
James Henry	18
Jester	28
José Cuervo	8
Lancelot	10
Little Big Man	12
Little Mo	16
Love Potion	7
Mafia	8
Megabucks	9
Mojo	23
Ranger	29
Razors Edge	9
Riptide	28
Ruger	25
Sledge Hammer	27
Two Dot	31
Yellowstone	29

Red Angus SiresPage

5-Star Gold	40
Braveheart	38
Cliff	42
Crandall	41
Dayton (Red Angus Cross)	45
Durango	44
Ellinger	41
Festus	36
Forte	43
Gold Mine	39
Hercules	37
Herd Quitter	32
Hiawatha	38
Higgins	33
Jackpot	37
Jango	43
Johnny Angel	33
Johnny B Special	35
Johnny Mizzou	34
Julian	45
Kody	39
Landmark	44
Macho Man	42
Parker	40
Yazzou	35

Hereford SiresPage

Axel	46
Clemson	47
Jackpot	47

South Poll SiresPage

El Jefe	49
Go Get 'Em	48
Hiram	49

Tarentaise Composite SiresPage

Colombo	50
Elijah	51
Tallahassee	51

Heat-Tolerant SiresPage

Callado	56
Generalissimo	55
He-Man	55
Hondo	54
Madera	56
Mufasa	52
Tarzan	54
Zim Bob	53

BLACK ANGUS



Daily Double

Birth Date: 9/27/2016 **Reg #:** 18814203 **A2 Beta Casein:** A2/A2
EPDs: B. Wt. -1.3 **W. Wt.** 33 **Y. Wt.** 50 **Milk** 13
Frame: 4.0 **Price:** \$60/straw \$35/certificate

Our Genetic Predictions

Calving Ease: ★★★★★ **Udder:** ★★★★★
Fleshing Ability: ★★★★★ **Disposition:** ★★★★★



Woodstone J Eric 8715
PCC Pay Day 1065A
PCC Dixie Erica Y1040
PCC D-J Daily Double 2748D
Emblazon CAR 103
CAR Emblazon Maid 312
Dixie Erica CH C A R 109

Woodstone Eric 8063
Woodstone Lady Jane 3275
PCC OH Pledge 2357P
PCC Dixie Erica T7040
OCC Emblazon 854E
Emulous Eulima C A R 4C
O C C Emblazon 854E
Emulous Eborea C A R E02C

Daily Double is our WOW-Factor bull! His sons and daughters are outstanding! He is a Pay Day son that is double-bred Emblazon on the bottom side of his pedigree. Pay Day's sire is an old Irish-bred bull. Pay Day's dam is a Pledge daughter that we took out of production to flush at 14 years of age. She is confirmed bred to have a calf this spring. Daily Double's calving ease direct EPD is in the top 4% of the Angus breed. His maintenance energy (\$EN) EPD is in the top 2%. There are several outstanding Daily Double sons in this AI Sire Directory. He is co-owned with D Bar J Cattle in Missouri and Pharo Ranch in Colorado.

BLACK ANGUS



Hobnob

Birth Date: 5/28/2020 **Reg #:** 20048121 **A2 Beta Casein:** A2/A2
EPDs: B. Wt. -1.5 **W. Wt.** 38 **Y. Wt.** 66 **Milk** 17
Frame: 4.0 (est) **Price:** \$30/straw \$35/certificate

Our Genetic Predictions

Calving Ease: ★★★★★ **Udder:** ★★★★★
Fleshing Ability: ★★★★★ **Disposition:** ★★★★★



PCC Hobnob 1173H

PCC Pay Day 1065A
PCC D-J Daily Double 2748D
CAR Emblazon Maid 312
PCC FSR Everclear 1913C
PCC Kimberly E7101
FSR Kimberly B4081

Woodstone J Eric 8715
PCC Dixie Erica Y1040
Emblazon CAR 103
Dixie Erica CH C A R 109
PCC FSR Jake 1950Y
FSR Elkin 948
PCC FSR Rebel Yell 1959Z
CH Kimberly 6105

Hobnob is one of many outstanding Daily Double sons working in PCC® herds. He goes back to Jake and Rebel on the bottom side of his pedigree. Hobnob was a favorite in our 2021 Montana Sale. He is an extremely thick bull with tremendous masculinity, muscling and grass efficiency. His calving ease direct EPD is in the top 4% of the Angus breed. His \$EN EPD is in the top 5%. Hobnob is co-owned with Luis Valles in Mexico and Lost Creek Cattle Company in North Dakota.



Hickory

Birth Date: 5/27/2020 **Reg #:** 20048119 **A2 Beta Casein:** A2/A2
EPDs: B. Wt. -0.6 **W. Wt.** 27 **Y. Wt.** 46 **Milk** 23
Frame: 3.5 (est) **Price:** \$30/straw \$35/certificate

Our Genetic Predictions

Calving Ease: ★★★★★ **Udder:** ★★★★★
Fleshing Ability: ★★★★★ **Disposition:** ★★★★★



PCC Hickory 1171H

PCC Pay Day 1065A
PCC D-J Daily Double 2748D
CAR Emblazon Maid 312
PCC FSR Everclear 1913C
PCC Matrix Erica E7116
FSR Matrix Erica B4109

Woodstone J Eric 8715
PCC Dixie Erica Y1040
Emblazon CAR 103
Dixie Erica CH C A R 109
PCC FSR Jake 1950Y
FSR Elkin 948
PCC FSR Back in Black 1999Z
FSR Matrix Erica 817

Hickory is a 3/4 brother to Hobnob. He has been working naturally at PCC Headquarters in Colorado. His dam goes back to Jake, Rebel and Ruger. Hickory was the high-selling bull in our 2021 Montana Bull Sale. He is a heavy-musclled bull with tremendous thickness. His birth weight EPD is in the top 15% of the Angus breed. His \$EN value is also in the top 3%. Hickory is co-owned with Lost Creek Cattle Company in North Dakota and Pharo Ranch in Colorado.

BLACK ANGUS



Jacks Fork

Birth Date: 8/25/2021 **Reg #:** 20379288 **A2 Beta Casein:** A2/A2
EPDs: B. Wt. -1.2 **W. Wt.** 34 **Y. Wt.** 60 **Milk** 16
Frame: 3.5 (est) **Price:** \$30/straw \$35/certificate

Our Genetic Predictions

Calving Ease: ★★★★★	Udder: ★★★★★
Fleshing Ability: ★★★★★	Disposition: ★★★★★



PCC D-J Jacks Fork 2771J

PCC Pay Day 1065A
 PCC D-J Daily Double 2748D
 CAR Emblazon Maid 312
 PCC FSR Gator 1869B
 D-J EZ Gal 716E
 D-J Miss EZ 503C

Woodstone J Eric 8715
 PCC Dixie Erica Y1040
 Emblazon CAR 103
 Dixie Erica CH C A R 109
 PCC FSR Jake 1950Y
 FSR Bluebell 2007
 PCC D-J Easy Money 2739Z
 CAR Miss Emblazon 308

Jacks Fork is another outstanding Daily Double son. He goes back to Jake, Beral of Wye and Emblazon on the bottom side of his pedigree. Jacks Fork has a very impressive 5+ rating for grass efficiency and muscling. Because he also has a 5+ hair coat, he will work great in endophyte-infected fescue country. Jacks Fork's calving ease direct EPD is in the top 4% of the Angus breed. His \$EN EPD is in the top 2%. Jacks Fork is co-owned with D Bar J Cattle in Missouri.

Love Potion

Birth Date: 5/15/2023 **Reg #:** 20947479 **A2 Beta Casein:** A2/A2
EPDs: B. Wt. -1.4 **W. Wt.** 22 **Y. Wt.** 41 **Milk** 15
Frame: 3.5 (est) **Price:** \$25/straw \$35/certificate

Our Genetic Predictions

Calving Ease: ★★★★★	Udder: ★★★★★
Fleshing Ability: ★★★★★	Disposition: ★★★★★



PCC Love Potion 1183L

PCC Pay Day 1065A
 PCC D-J Daily Double 2748D
 CAR Emblazon Maid 312
 PCC OH Pledge 2357P
 PCC Dixie Erica F8075
 PCC Dixie Erica A3053

Woodstone J Eric 8715
 PCC Dixie Erica Y1040
 Emblazon CAR 103
 Dixie Erica CH C A R 109
 OCC Homer 650H
 CM Merle 863L
 Beral of Wye UMF 9288
 PCC Dixie Erica W9055

The thing that excites us most about this Daily Double son is the fact that his 7-year-old dam is a Pledge daughter that goes back to Beral of Wye and Bench Mark. Love Potion has a pedigree that is stacked for maternal greatness. He will be an udder improver! Love Potion has 5-star fleshing ability and muscling. His birth weight and \$EN EPDs are in the top 10% of the Angus breed. Love Potion is co-owned with Flying S Ranch in Kansas and Lost Creek Cattle Company in North Dakota.

BLACK ANGUS

Megabucks

Birth Date: 4/29/2024
EPDs: B. Wt. -1.1
Frame: 4.0 (est)

Reg #: 21209550 A2 Beta Casein: A2/A2
W. Wt. 37 Y. Wt. 69 Milk 23
Price: \$30/straw \$35/certificate

Our Genetic Predictions

Calving Ease: ★★★★★ Udder: ★★★★★
Fleshing Ability: ★★★★★ Disposition: ★★★★★



PCC CTM Megabucks 3104M

PCC D-J Daily Double 2748D
PCC José Cuervo 1163J
PCC Modest Rose F8073
PCC FSR Razz 1803B
FSR Eileen F8094
FSR Eileen D610

PCC Pay Day 1065A
CAR Emblazon Maid 312
PCC EZ Come EZ Go 1060C
PCC Modest Rose A3060
Sinclair Timeless 8BA4
Sinclair Eileen 2JP5 0Z2
PCC FSR Real McCoy 1918X
FSR Eileen 9103

Many thought Megabucks was the best Angus bull in the 2025 Montana Sale. He is a José Cuervo son with 5-star muscling, masculinity, fleshing ability, grass efficiency and thickness. Megabucks' birth weight and calving ease direct EPDs are both in the top 10% of the Angus breed. His \$EN EPD is in the top 3%. Megabucks is co-owned with Seven Spades Cattle Company in Colorado and McDaniel Ranch in Montana.



Sire of Razors Edge



Razors Edge

Birth Date: 3/15/2021
EPDs: B. Wt. -1.4
Frame: 3.5 (est)

Reg #: 20088534 A2 Beta Casein: A2/A2
W. Wt. 44 Y. Wt. 71 Milk 22
Price: \$30/straw \$35/certificate

Our Genetic Predictions

Calving Ease: ★★★★★ Udder: ★★★★★
Fleshing Ability: ★★★★★ Disposition: ★★★★★

PCC FSR Razors Edge 1830J

PCC Ruger 1042T
PCC FSR Real McCoy 1918X
FSR Miss Rebel 826
PCC Ruger 1042T
FSR Jilt D634
TQ Jilt 02Z

OCC Emancipate 889E
PCC Queen 409
PCC MH Rebel 2009R
FSR Miss Husker Legend 660
OCC Emancipate 889E
PCC Queen 409
PAR Dakota Homer 95
TQ Jilt 34P

Razors Edge is a Real McCoy son that is double-bred to Ruger. He is the result of a brother/sister mating — linebred for locked-in maternal greatness! He was the leadoff bull in our 2022 Colorado Spring Sale. Razors Edge has great muscling and thickness. His birth weight and calving ease direct EPDs are in the top 10% of the Angus breed. His \$EN EPD is in the top 2%. Razors Edge is co-owned with Flying S Ranch in Kansas and Storm Casper in Colorado.

BLACK ANGUS



Commissioner

Birth Date: 3/10/2015 **Reg #:** 18258662 **A2 Beta Casein:** A2/A2
EPDs: B. Wt. -3.5 **W. Wt.** 25 **Y. Wt.** 44 **Milk** 25
Frame: 3.5 (est) **Price:** \$30/straw \$35/certificate

Our Genetic Predictions

Calving Ease: ★★★★★ **Udder:** ★★★★★
Fleshing Ability: ★★★★★ **Disposition:** ★★★★★



PCC D-J Commissioner 2715C

OCC Moderator 825M	OCC Headliner 661H
PCC D-J X-citement 2764X	OCC Dixie Erica 845K
CM Merle 918E	DHD Traveler 6807
	Merle DHD 4844
	OCC Homer 650H
PCC OH Pledge 2357P	CM Merle 863L
D-J BAX Audrey 123Y	BAX Elite 16-4182
BAX Elizabeth Audrey 519-26	BAX Audrey Erica 26-9



Semen is available for export for \$42 (US) per straw.

Commissioner is a well-proven bull that has been extremely popular in the United States, Canada and Australia. He is an extremely thick bull with tremendous masculinity. His birth weight and calving ease direct EPDs are both in the top 1% of the Angus breed. Commissioner's \$EN EPD is in the top 2%. He is co-owned with McDaniel Ranch in Montana and D Bar J Cattle in Missouri.

Lancelot

Birth Date: 5/16/2023 **Reg #:** 20880596 **A2 Beta Casein:** A2/A2
EPDs: B. Wt. -3.0 **W. Wt.** 29 **Y. Wt.** 51 **Milk** 25
Frame: 3.5 (est) **Price:** \$20/straw \$35/certificate

Our Genetic Predictions

Calving Ease: ★★★★★ **Udder:** ★★★★★
Fleshing Ability: ★★★★★ **Disposition:** ★★★★★



PCC CTM Lancelot 3117L

PCC D-J X-citement 2764X	OCC Moderator 825M
PCC D-J Commissioner 2715C	CM Merle 918E
D-J BAX Audrey 123Y	PCC OH Pledge 2357P
	BAX Elizabeth Audrey 519-26
	PCC Ruger 1042T
PCC FSR Real McCoy 1918X	FSR Miss Rebel 826
CTM Melba F816	PCC FSR Ari 1903W
FSR Melba 2149	FSR Melba 077



Lancelot is a Commissioner son out of a Real McCoy daughter. We are very excited about this genetic combination. Lancelot is an extremely masculine bull with 5-star thickness, muscling and grass efficiency. His calving ease direct and \$EN EPDs are both in the top 1% of the Angus breed. Lancelot is co-owned with Flying S Ranch in Kansas and McDaniel Ranch in Montana.

BLACK ANGUS



EZ Come EZ Go

Birth Date: 5/15/2015 Reg #: 18421535 A2 Beta Casein: A2/A2
 EPDs: B. Wt. -1.2 W. Wt. 28 Y. Wt. 47 Milk 20
 Frame: 3.5 (est) Price: \$40/straw \$35/certificate

Our Genetic Predictions

Calving Ease: ★★★★★	Udder: ★★★★★
Fleshing Ability: ★★★★★	Disposition: ★★★★★



PCC EZ Come EZ Go 1060C

PCC Low Input 1052W
 PCC D-J Easy Money 2739Z
 D-J Miss Merle 033X
 Beral of Wye UMF 9288
 PCC Miss Pine Bank Z2053
 PCC Miss Pine Bank W9051

Beral of Wye UMF 9288
 PCC Eman Sheman 227
 OCC Moderator 825M
 CM Merle 918E
 Alap of Wye UMF 8329
 Blackbird of Wye UMF 7620
 PCC T Q Patton N6T
 PCC Miss Pine Bank T7050



Semen is available for export for \$52 (US) per straw.

EZ Come EZ Go is an Easy Money son that goes back to Beral of Wye on both sides of his pedigree. We've seen some impressive EZ Come calves at PCC Headquarters, in Texas and in Australia. He is an extremely masculine, heavy-muscled bull. EZ Come's \$EN EPD is in the top 1% of the breed. EZ Come EZ Go is co-owned with Pharo Ranch in Colorado.

Cha Ching

Birth Date: 9/5/2015 Reg #: 18493345 A2 Beta Casein: A2/A2
 EPDs: B. Wt. -2.9 W. Wt. 30 Y. Wt. 53 Milk 25
 Frame: 4.0 (est) Price: \$10/straw \$35/certificate

Our Genetic Predictions

Calving Ease: ★★★★★	Udder: ★★★★★
Fleshing Ability: ★★★★★	Disposition: ★★★★★

PCC D-J Cha Ching 2770C

PCC Low Input 1052W
 PCC D-J Easy Money 2739Z
 D-J Miss Merle 033X
 PCC OH Overhaul 2335R
 D-J Merle O 117Y
 OH Merle S6151

Beral of Wye UMF 9288
 PCC Eman Sheman 227
 OCC Moderator 825M
 CM Merle 918E
 OH West Plains 3510
 OH Georgina 3563
 MVL 854E Emblazon 8P
 CM Merle 734H

At \$10 per straw, Cha Ching is a real steal! He is another thick, heavy-muscled Easy Money son. Cha Ching has 5++ fleshing ability. He also has an excellent 8 out of 10 DNA score for tenderness. Cha Ching's birth weight and calving ease direct EPDs are both in the top 3% of the Angus breed. He is co-owned with Bruns Angus in Nebraska and D Bar J Cattle in Missouri.

BLACK ANGUS



Hayden

Birth Date: 4/17/2010 **Reg #:** 16761830 **A2 Beta Casein:** A1/A2
EPDs: B. Wt. -1.9 **W. Wt.** 3 **Y. Wt.** 11 **Milk** 14
Frame: 3.5 (est) **Price:** \$10/straw \$35/certificate

Our Genetic Predictions

Calving Ease: ★★★★★	Udder: ★★★★★
Fleshing Ability: ★★★★★	Disposition: ★★★★★

Lodge of Wye MH Tank 54 MH Mina 836 PCC FSR Hayden 2071X OCC Hunter 928H MH Clova Pride 637S MH Clova Pride 3154	Career of Wye Lorena of Wye OCC Broadside 876B M O Miss Awesome 3100 OCC Focus 813F OCC Dixie Erica 960E MH Rainmaker 127 Black Tooth Clova 215Y
---	---

Hayden is somewhat of an outcross to our program. His paternal grandsire is Lodge of Wye, who was born in 1963. Hayden has proven to be an udder improver. He is a 5-star calving ease bull with a birth weight EPD in the top 5% of the Angus breed. His \$EN EPD is the top 1%. Hayden is co-owned with Seven Spades Cattle Company in Colorado and Flying S Ranch in Kansas.



Little Big Man

Birth Date: 5/25/2014 **Reg #:** 18085038 **A2 Beta Casein:** A2/A2
EPDs: B. Wt. -4.4 **W. Wt.** 7 **Y. Wt.** 19 **Milk** 19
Frame: 2.5 - 3.0 (est) **Price:** \$15/straw \$35/certificate

Our Genetic Predictions

Calving Ease: ★★★★★	Udder: ★★★★★
Fleshing Ability: ★★★★★	Disposition: ★★★★★

MH Tank 54 PCC FSR Hayden 2071X MH Clova Pride 637S PCC SSCC Little Big Man 1740B PCC SSCC Mojo 1704X SSCC Lacy 2734Z SSCC Lacy 4716	Lodge of Wye MH Mina 836 OCC Hunter 928H MH Clova Pride 3154 Dunlouse Jipsey Earl E161 SSCC Miss Basin 4705 O C C Keno 681K SSCC Lacy J 07B9
---	---

Little Big Man is a Hayden son who lives up to his name. He is a powerhouse bull in a small package. Little Big Man was used naturally at PCC Headquarters for several years. He has extreme calving ease with a birth weight EPD and a calving ease direct EPD in the top 1/2 of 1% of the Angus breed. Little Big Man is co-owned with Seven Spades Cattle Company and Pharo Ranch in Colorado.

BLACK ANGUS



High Five

Birth Date: 5/15/2020 **Reg #:** 20048106 **A2 Beta Casein:** A2/A2
EPDs: B. Wt. -6.0 **W. Wt.** 8 **Y. Wt.** 25 **Milk** 17
Frame: 3.5 (est) **Price:** \$15/straw \$35/certificate

Our Genetic Predictions

Calving Ease: ★★★★★	Udder: ★★★★★
Fleshing Ability: ★★★★★	Disposition: ★★★★★

PCC High Five 1181H

PCC FSR Hayden 2071X	MH Tank 54
PCC SSCC Little Big Man 1740B	MH Clova Pride 637S
SSCC Lacy 2734Z	PCC SSCC Mojo 1704X
	SSCC Lacy 4716
PCC Bench Mark L81	OCC Broadside 876B
PCC Modest Eileen E7070	OCC Juanada 722F
PCC Modest Eileen S6023	BAX Elite 16-4182
	PCC Modest Eileen 281

High Five is a Little Big Man son out of a very nice Bench Mark daughter. He has extreme calving ease. His birth weight and calving ease direct EPDs are both in the top 1/2 of 1% of the Angus breed. He is an extremely low-maintenance bull with a \$EN EPD in the top 2% of the Angus breed. High Five is co-owned with Greg Jones and Pharo Ranch, both in Colorado.



Down Town

Birth Date: 5/13/2014 **Reg #:** 18085047 **A2 Beta Casein:** A2/A2
EPDs: B. Wt. -1.8 **W. Wt.** 25 **Y. Wt.** 46 **Milk** 11
Frame: 4.0 (est) **Price:** \$10/straw \$35/certificate

Our Genetic Predictions

Calving Ease: ★★★★★	Udder: ★★★★★
Fleshing Ability: ★★★★★	Disposition: ★★★★★

PCC SSCC Down Town 1719B

MH Tank 54	Lodge of Wye
PCC FSR Hayden 2071X	MH Mina 836
MH Clova Pride 637S	OCC Hunter 928H
	MH Clova Pride 3154
PCC OH Pledge 2357P	OCC Homer 650H
SSCC Idaho Lady 0740X	CM Merle 863L
SSCC Idaho Lady 8733U	Mon Reposa Rito
	SSCC Blackcap Lady 200



Semen is available for export for \$22 (US) per straw.

Down Town is a Hayden son out of a Pledge daughter. He produces thick, deep-bodied, early-maturing sons and daughters. He is a 5-star calving ease bull with a birth weight EPD in the top 5% of the Angus Breed. At \$10 per straw, Down Town is a real steal! He is co-owned with Seven Spades Cattle Company in Colorado, Bruns Angus in Nebraska and D Bar J Cattle in Missouri.

BLACK ANGUS



East Bound & Down

Birth Date: 8/29/2017 **Reg #:** 19158643 **A2 Beta Casein:** A2/A2
EPDs: B. Wt. -1.4 **W. Wt.** 11 **Y. Wt.** 28 **Milk** 14
Frame: 3.0 (est) **Price:** \$20/straw \$35/certificate

Our Genetic Predictions

Calving Ease: ★★★★★	Udder: ★★★★★
Fleshing Ability: ★★★★★	Disposition: ★★★★★

PCC FSR Hayden 2071X	MH Tank 54
PCC SSCC Down Town 1719B	MH Clova Pride 637S
SSCC Idaho Lady 0740X	PCC OH Pledge 2357P
PCC D-J East Bound & Down 2752E	SSCC Idaho Lady 8733U
PCC Pay Day 1065A	Woodstone J Eric 8715
D-J Miss Payday 555C	PCC Dixie Erica Y1040
D-J Miss Emblazon 223Z	PCC Scat 1000W
	CAR Miss Emblazon 308

East Bound and Down is our favorite Down Town son. With Hayden, Pledge and Idaho on top and Pay Day on the bottom, this bull's pedigree is stacked for maternal greatness. His phenotype matches his genotype. He is a heavy-muscled bull that stays pig-fat year-round! Notice the tremendous slope in his hips. East Bound is co-owned with D Bar J Cattle in Missouri and Pharo Ranch in Colorado.

BLACK ANGUS



Bullseye

Birth Date: 5/21/2014 **Reg #:** 18058333 **A2 Beta Casein:** A1/A2
EPDs: B. Wt. -2.5 **W. Wt.** 31 **Y. Wt.** 53 **Milk** 21
Frame: 3.5 (est) **Price:** \$30/straw \$35/certificate

Our Genetic Predictions

Calving Ease: ★★★★★ **Udder:** ★★★★★
Fleshing Ability: ★★★★★ **Disposition:** ★★★★★



PCC Bullseye 1057B

Alap of Wye UMF 8329	Manning of Wye
Beral of Wye UMF 9288	Alexina of Wye Umf 6968
Blackbird of Wye Umf 7620	Angwin of Wye Umf 7097
	Blackbird of Wye Umf 6982
PCC OH Pledge 2357P	OCC Homer 650H
PCC Dixie Erica Y1043	CM Merle 863L
PCC Dixie Erica	Emulation N Bar 5522
	PCC Dixie Erica S6046

Bullseye is right on target for the PCC program. He is a 20-Star Beral of Wye son out of a favorite Pledge daughter. Bullseye is an extremely masculine, heavy-muscled bull that stays in great shape year-round. Bullseye's birth weight EPD is in the top 3% of the Angus breed. His \$EN EPD is in the top 4%. Bullseye is co-owned with Landrigan Livestock and Crouch Angus, both in Nebraska.



Bench Mark

Birth Date: 5/14/2001 **Reg #:** 14050287 **A2 Beta Casein:** A2/A2
EPDs: B. Wt. -0.8 **W. Wt.** 18 **Y. Wt.** 38 **Milk** 19
Frame: N/A **Price:** \$10/straw \$35/certificate

Our Genetic Predictions

Calving Ease: ★★★★★ **Udder:** ★★★★★
Fleshing Ability: ★★★★★ **Disposition:** ★★★★★

PCC Bench Mark L81

DHD Traveler 6807	QAS Traveler 23-4
OCC Broadside 876B	BeMindful Maid DHD 0807
Revolution of Rose RR 9239	PBC 707 1M F0203
	REVOLUTION ROSE OF R R 4064
Bear of Wye UMF 6591	Lambdin of Wye UMF 6278
OCC Juanada 722F	Blackbird of Wye UMF 6324
OCC Juanada 728D	O C C BULLION 822B
	OCC Juanada 801B

Bench Mark has had a huge impact on the PCC program! He is a well-proven 5-star calving ease bull that sires calves with extra thickness and fleshing ability. His daughters still have picture-perfect udders in their teens! Bench Mark's dam was a favorite Bear of Wye daughter that we flushed a couple of times. He is co-owned with Dale Kostur in Wyoming and Pharo Ranch in Colorado.

BLACK ANGUS



Little Mo

Birth Date: 5/21/2017

Reg #: 19118560

A2 Beta Casein: A2/A2

EPDs: B. Wt. -2.1

W. Wt. 34

Y. Wt. 48

Milk 22

Frame: 3.5 (est)

Price: \$30/straw \$35/certificate

Our Genetic Predictions

Calving Ease: ★★★★★

Udder: ★★★★★

Fleshing Ability: ★★★★★

Disposition: ★★★★★



PCC LCC Little Mo 3301E

PCC Ruger 1042T

PCC FSR Back in Black 1999Z

FSR Miss Rebel Star 880

OCC Emblazon 854E

MH Sari 423

M H Miss Rainmaker 3131

OCC Emancipate 889E

PCC Queen 409

PCC MH Rebel 2009R

FSR Miss Five Star 613

DHD Traveler 6807

Dixie Erica of CH 1019

G D A R Rainmaker 340

I O U Miss Maverick 718

Little Mo is another 20-Star bull. He is a Ruger grandson out of a 13-year-old Emblazon daughter. There is tremendous longevity in this bull's pedigree. Little Mo has extreme grass efficiency. His birth weight EPD is in the top 4% of the Angus breed. His \$EN EPD is in the top 3%. Little Mo is co-owned with Lost Creek Cattle Company and Billy Scott, both in North Dakota.

BLACK ANGUS



Bam Bam

Birth Date: 3/29/2020

EPDs: B. Wt. -2.2

Frame: 4.0

Reg #: 19911511

W. Wt. 52

A2 Beta Casein: A2/A2

Y. Wt. 79

Milk 22

Price: \$10/straw \$35/certificate

Our Genetic Predictions

Calving Ease: ★★★★★

Udder: ★★★★★

Fleshing Ability: ★★★★★

Disposition: ★★★★★

PCC OAO Amarillo 1237Z

PCC FSR Ricochet 1935C

FSR Missy A3074

PCC FSR Bam Bam 1920H

PCC Ruger 1042T

FSR Dixie Erica A3071

FSR Matrix Erica 817

PCC Del Rio 1031R

OAO Jean 8403

PCC FSR Real McCoy 1918X

FSR Miss Rebel Star 880

OCC Emancipate 889E

PCC Queen 409

OCC Homer 650H

JAD Annie S24

Bam Bam is an extremely thick and heavy-muscled bull. His sire goes back to two of our all-time favorite Angus bulls — Real McCoy and Magua. Bam Bam's birth weight EPD is in the top 3% of the Angus breed. His \$EN EPD is in the top 4%. Bam Bam is a real steal at \$10 per straw. He is co-owned with Seven Spades Cattle Company in Colorado and Flying S Ranch in Kansas.

BLACK ANGUS



Double Your Profit

Birth Date: 9/18/2016 **Reg #:** 18814205 **A2 Beta Casein:** A2/A2
EPDs: B. Wt. -5.3 **W. Wt.** 12 **Y. Wt.** 20 **Milk** 22
Frame: 4.0 (est) **Price:** \$10/straw \$35/certificate

Our Genetic Predictions

Calving Ease: ★★★★★ **Udder:** ★★★★★
Fleshing Ability: ★★★★★ **Disposition:** ★★★★★



Pending

PCC D-J Double Your Profit 2745D

Beral of Wye UMF 9288
 PCC Low Input 1052W
 PCC Eman Sheman 227
 PCC Augustus 1010T
 D-J Ida Blackcap 108Y
 Blackcap 233 of SW40

Alap of Wye UMF 8329
 Blackbird of Wye UMF 7620
 OCC Emancipate 889E
 Tiedale Lass 92-741
 Mon Reposa Rito (Idaho)
 CM Blackbird 724M
 Forgeman of Wye UMF 8727
 Blackcap Johnnie 233 of SW40

Double Your Profit is a Low Input son that goes back to Wye breeding on both sides of his pedigree. He is a very thick, heavy-muscled bull — with the ability to improve udders. Double Your Profit has an outstanding 9 out of 10 DNA score for tenderness. His birth weight EPD is in the top 1/2 of 1% of the Angus breed. He is co-owned with D Bar J Cattle in Missouri and Pharo Ranch in Colorado.



James Henry

Birth Date: 8/29/2021 **Reg #:** 20379283 **A2 Beta Casein:** A2/A2
EPDs: B. Wt. -3.7 **W. Wt.** 18 **Y. Wt.** 36 **Milk** 23
Frame: 3.5 **Price:** \$30/straw \$35/certificate

Our Genetic Predictions

Calving Ease: ★★★★★ **Udder:** ★★★★★
Fleshing Ability: ★★★★★ **Disposition:** ★★★★★



PCC D-J James Henry 2749J

PCC Low Input 1052W
 PCC D-J Conquistador 2707C
 D-J Birch Cat 252Z
 PCC FSR Gator 1869B
 D-J Erica 794E
 D-J Erica 548C

Beral of Wye UMF 9288
 PCC Eman Sheman 227
 PCC Scat 1000W
 KT Irvington 2895 384 1959
 PCC FSR Jake 1950Y
 FSR Bluebell 2007
 PCC OH Pledge 2357P
 OH Erica Lassie S6153

James Henry is a Conquistador son that goes back to Pledge twice on the bottom side of his pedigree. He is a powerhouse bull with extreme calving ease. His \$EN EPD is in the top 2% of the Angus breed. James Henry has a 5+ hair coat and should work great in fescue country. He is co-owned with D Bar J Cattle in Missouri and Stanleyville Cattle Company in Ohio.

BLACK ANGUS



Galleon

Birth Date: 9/4/2019
EPDs: B. Wt. -3.8
Frame: 3.0

Reg #: 19771641
W. Wt. 23

A2 Beta Casein: A2/A2
Y. Wt. 48
Milk 21
Price: \$40/straw \$35/certificate

Our Genetic Predictions

Calving Ease: ★★★★★	Udder: ★★★★★
Fleshing Ability: ★★★★★	Disposition: ★★★★★



PCC D-J Galleon 2760G

OCC Homer 650H
PCC OH Pledge 2357P
CM Merle 863L

PCC D-J Commissioner 2715C
D-J Ellen Belle 706E
D-J Annabelle 417B

OCC Focus 813F
OCC Dixie Erica 816B
OCC Joker 620J
CM Merle 918E
PCC D-J X-citement 2764X
D-J BAX Audrey 123Y
PCC Scat 1000W
D-J Annabel 032X

Galleon is a very impressive Pledge son. Pledge has produced many outstanding sons for the PCC program. His daughters have been beautiful, long-lasting cows with excellent feet and udders. Galleon combines extreme thickness, muscling and masculinity with extreme calving ease. His \$EN EPD is in the top 2% of the Angus breed. Galleon is co-owned with D Bar J Cattle in Missouri.

BLACK ANGUS



High Roller

Birth Date: 5/21/2011 **Reg #:** 17195299 **A2 Beta Casein:** A2/A2
EPDs: B. Wt. -1.1 **W. Wt.** 33 **Y. Wt.** 55 **Milk** 21
Frame: 4.0 - 4.5 (est) **Price:** \$20/straw \$35/certificate

Our Genetic Predictions

Calving Ease: ★★★★★ **Udder:** ★★★★★
Fleshing Ability: ★★★★★ **Disposition:** ★★★★★



PCC High Roller 1051Y

OCC Homer 650H	OCC Focus 813F
PCC OH Pledge 2357P	OCC Dixie Erica 816B
CM Merle 863L	OCC Joker 620J
	CM Merle 918E
Bear of Wye UMF 6591	Lambdin of Wye UMF 6278
SCC Ms Bear 2261	Blackbird of Wye UMF 6324
SCC MS Broadside 044	OCC Broadside 876B
	SCC MS Emulation 628

High Roller is a Pledge son out of a favorite Bear of Wye daughter that produced 14 calves without missing. He will produce long-lasting, fertile cows with great udders. High Roller's birth weight EPD is in the top 10% of the Angus breed. His \$EN EPD is in the top 3%. High Roller also has outstanding DNA scores for marbling and tenderness. He is co-owned with Ohio Land and Cattle.



High Point

Birth Date: 6/1/2011 **Reg #:** 17195302 **A2 Beta Casein:** A2/A2
EPDs: B. Wt. -3.0 **W. Wt.** 33 **Y. Wt.** 50 **Milk** 18
Frame: 4.0 (est) **Price:** \$15/straw \$35/certificate

Our Genetic Predictions

Calving Ease: ★★★★★ **Udder:** ★★★★★
Fleshing Ability: ★★★★★ **Disposition:** ★★★★★

PCC High Point 1054Y

OCC Homer 650H	OCC Focus 813F
PCC OH Pledge 2357P	OCC Dixie Erica 816B
CM Merle 863L	OCC Joker 620J
	CM Merle 918E
Emulation N Bar 5522	Emulation 31
PCC Dixie Erica U8031	Ankony 8F78 Lass 8F275
P C C Dixie Erica P411	OCC Emancipate 889E
	PCC Modest Dixie 209

High Point is another great Pledge son that left his mark on the PCC program. His dam was our very best Emulation 5522 daughter. She produced a calf every year for 12 years. High Point was still breeding cows at 12 years of age. He is a guaranteed udder improver! High Point's birth weight EPD is in the top 2% of the Angus breed. He is co-owned with Bruns Angus in Nebraska.

BLACK ANGUS



Back 2 Basics

Birth Date: 5/15/2015 **Reg #:** 18421533 **A2 Beta Casein:** A2/A2
EPDs: B. Wt. -1.0 **W. Wt.** 26 **Y. Wt.** 52 **Milk** 17
Frame: 3.5 (est) **Price:** \$20/straw \$35/certificate

Our Genetic Predictions

Calving Ease: ★★★★★	Udder: ★★★★★
Fleshing Ability: ★★★★★	Disposition: ★★★★★



PCC Back 2 Basics 1056C

OCC Homer 650H	OCC Focus 813F
PCC OH Pledge 2357P	OCC Dixie Erica 816B
CM Merle 863L	OCC Joker 620J
	CM Merle 918E
Beral of Wye UMF 9288	Alap of Wye UMF 8329
PCC Dixie Erica A3053	Blackbird of Wye UMF 7620
PCC Dixie Erica W9055	PCC Bench Mark L81
	B A A Dixie Erica 4103A

Back 2 Basics is a Pledge son that goes back to Beral of Wye and Bench Mark on the bottom side of his pedigree. His pedigree is stacked for maternal greatness. Back 2 Basics is a very thick, heavy-muscled bull — with 5-star calving ease. His \$EN EPD is in the top 1% of the Angus breed. Back 2 Basics is co-owned with Pharo Ranch in Colorado.



Jake

Birth Date: 3/11/2011 **Reg #:** 17085993 **A2 Beta Casein:** A2/A2
EPDs: B. Wt. -3.8 **W. Wt.** 29 **Y. Wt.** 56 **Milk** 22
Frame: 3.5 (est) **Price:** \$30/straw \$35/certificate

Our Genetic Predictions

Calving Ease: ★★★★★	Udder: ★★★★★
Fleshing Ability: ★★★★★	Disposition: ★★★★★



PCC FSR Jake 1950Y

OCC Homer 650H	OCC Focus 813F
PCC OH Pledge 2357P	OCC Dixie Erica 816B
CM Merle 863L	OCC Joker 620J
	CM Merle 918E
JAD Matrix M604	OCC Emblazon 854E
JAD Queen Mother S35	JAD Annie 6604
JAD Queen Mother 947	Sitz Traveler 5556
	J A D Queen Mother 5653

Jake has already made his mark in our program. Eight sons have been used in PCC cooperative herds. Jake is a 20-Star bull with extreme calving ease. His calving ease direct and birth weight EPDs are both in the top 1% of the Angus breed. Jake's calving ease maternal EPD is in the top 2% of the breed. Jake is co-owned with Flying S Ranch in Kansas.

BLACK ANGUS



Fortune

Birth Date: 4/1/2016 **Reg #:** 18543272 **A2 Beta Casein:** A2/A2
EPDs: B. Wt. -2.7 **W. Wt.** 18 **Y. Wt.** 36 **Milk** 29
Frame: 3.0 (est) **Price:** \$30/straw \$35/certificate

Our Genetic Predictions

Calving Ease: ★★★★★ **Udder:** ★★★★★
Fleshing Ability: ★★★★★ **Disposition:** ★★★★★



PCC FSR Fortune 3599D

PCC OH Pledge 2357P
 PCC FSR Jake 1950Y
 JAD Queen Mother S35
 PCC FSR Wolverine 1943X
 FSR Elkin 3157
 FSR Elkin 948

OCC Homer 650H
 CM Merle 863L
 JAD Matrix M604
 JAD Queen Mother 947
 PCC MH Rebel 2009R
 BR Missy 808 020 231
 PCC MH Rebel 2009R
 FSR Miss Five Star 770

Fortune is a heavy-muscled Jake son with extreme calving ease and 5+ fleshing ability. He was in the top 5% of his contemporary group for grass efficiency and early maturity. Fortune's maintenance energy (\$EN) EPD is in the top 4% of the Angus breed. Fortune is co-owned with Flying S Ranch in Kansas and Pharo Ranch in Colorado.



Cinch

Birth Date: 4/14/2012 **Reg #:** 17380927 **A2 Beta Casein:** A2/A2
EPDs: B. Wt. -2.6 **W. Wt.** 35 **Y. Wt.** 63 **Milk** 20
Frame: 4.0 (est) **Price:** \$20/straw \$35/certificate

Our Genetic Predictions

Calving Ease: ★★★★★ **Udder:** ★★★★★
Fleshing Ability: ★★★★★ **Disposition:** ★★★★★



PCC BA Cinch 2318Z

PAR Dakota Homer 95
 PCC TQ Science 1843W
 TQ Barbara 80R
 OCC Sampson 876S
 BA Sampson 935V
 V-Bar Janet 561

OCC Homer 650H
 PAR Traveling Broadside 563
 Feltons V Filibuster 6
 TQ Barbara 32M
 OCC Emblazon 854E
 OCC Juanada 710K
 V Bar Traveler 717G
 Jannet of R R 770B

Cinch worked very well on a high-elevation ranch in the Colorado mountains for seven years. His birth weight and calving ease direct EPDs are both in the top 3% of the Angus breed. Cinch's maintenance energy (\$EN) EPD is in the top 3%. He is co-owned with Pulliam Angus Ranch in Colorado and Bruns Angus in Nebraska.

BLACK ANGUS



Mojo

Birth Date: 4/18/2010
EPDs: B. Wt. -4.3
Frame: 3.5 (est)

Reg #: 16777360
W. Wt. 14

A2 Beta Casein: A2/A2
Y. Wt. 14
Milk 37
Price: \$10/straw \$35/certificate

Our Genetic Predictions

Calving Ease: ★★★★★	Udder: ★★★★★
Fleshing Ability: ★★★★★	Disposition: ★★★★★

	Betro of Classlochie	Rockie of Woodview
	Dunlouise Jipsey Earl E161	Bethrothed 19 of Classiochie
	Dunlouise Jipsey Clova C095	Bernardo of Classlochie
PCC SSCC Mojo 1704X		Cannahars Jipsey Yoko Y485
	Mon Reposa Rito (Idaho)	Mon Reposa Shandar
	SSCC Miss Basin 4705	Lawsons Rim Rock 606-4003
	SSCC Miss Basin 191	O C C Emancipate 889E
		S S C C Miss Basin 1FT7

Mojo's sire, Jipsey Earl, is a 100% Scottish-bred bull that has worked well in our program. Mojo's dam is the easiest-fleshing Idaho daughter we have ever seen. Mojo combines extreme calving ease with tremendous thickness and eye appeal. His birth weight and calving ease direct EPDs are both in the top 1/2 of 1% of the Angus breed. Mojo is co-owned with Seven Spades Cattle Company in Colorado.

BLACK ANGUS



Bo Jangles

Birth Date: 2/23/2018 **Reg #:** 19296913 **A2 Beta Casein:** A2/A2
EPDs: B. Wt. -4.3 **W. Wt.** 18 **Y. Wt.** 29 **Milk** 35
Frame: 3.0 (est) **Price:** \$30/straw \$35/certificate

Our Genetic Predictions

Calving Ease: ★★★★★ **Udder:** ★★★★★
Fleshing Ability: ★★★★★ **Disposition:** ★★★★★



PCC SSCC Bo Jangles 1702F

Dunlouse Jipsey Earl E161
 PCC SSCC Mojo 1704X
 SSCC Miss Basin 4705
 SAV Fame 9312
 SSCC Tiedale Lass 4706B
 SSCC Lass Backer 8716U

Betro of Classlochie
 Dunlouse Jipsey Clova C095
 Mon Reposa Rito
 SSCC Miss Basin 191
 SAF Fame
 S A V Juana 6232
 CM Morgan 687M
 SSCC Lass 4754

Bo Jangles is a Mojo son that combines extreme thickness with extreme calving ease. His birth weight and calving ease direct EPDs are both in the top 1/2 of 1% of the Angus breed. Bo Jangles is an extremely early-maturing bull with 5+ grass efficiency. He is co-owned with Seven Spades Cattle Company and Pharo Ranch, both in Colorado.



Fat Chance

Birth Date: 3/29/2018 **Reg #:** 19300750 **A2 Beta Casein:** A2/A2
EPDs: B. Wt. 1.7 **W. Wt.** 40 **Y. Wt.** 76 **Milk** 32
Frame: 3.5 (est) **Price:** \$15/straw \$35/certificate

Our Genetic Predictions

Calving Ease: ★★★★★ **Udder:** ★★★★★
Fleshing Ability: ★★★★★ **Disposition:** ★★★★★



PCC FSR Fat Chance 2013F

Sinclair Timeless 8BA4
 PCC FSR Razz 1803B
 Sinclair Eileen 2JP5 0Z2
 PCC FSR Bud 2071B
 FSR Clova Pride D6342
 FSR Clova Pride B454

Sinclair IN Time 6BT39
 Sinclair Blackbird 2P8 7079
 Dunlouse Jipsey Earl E161
 Sinclair Eileen 0Z2 6J5
 PCC Iron Man 049
 FSR Elkin 242
 Sinclair Timeless 8BA4
 Sinclair C Pride 2PU17 8FC21

Three-fourths of Fat Chance's pedigree is a total outcross to the PCC program. We expect him to add some hybrid vigor. He is an early-maturing bull — with 5-star grass efficiency. Since Fat Chance has a DNA score of 8 out of 10 for calving ease, we are very confident in giving him 4-star calving ease. He is co-owned with Flying S Ranch in Kansas and Enrique Valles in Mexico.

BLACK ANGUS



Ruger

Birth Date: 5/12/2007

Reg #: 16101291

A2 Beta Casein: A2/A2

EPDs: B. Wt. -0.9

W. Wt. 37

Y. Wt. 55

Milk 22

Frame: 3.5 (est)

Price: \$30/straw \$35/certificate

Our Genetic Predictions

Calving Ease: ★★★★★

Udder: ★★★★★

Fleshing Ability: ★★★★★

Disposition: ★★★★★



PCC Ruger 1042T

OCC Anchor 771A

OCC Emancipate 889E

Dixie Erica of RR 4309

PCC Iron Man 049

PCC Queen 409

PCC Modest Queen 248

DHD Traveler 6807

OCC Juanada 709V

Shoshone Vantage JB23

Dixie Erica of RR 6124

DHLL Night Man

OCC Revolution Rose 802F

Moderator PC 4034

OCC Queen 868E

Ruger has left his mark in the PCC program. He is the sire of the great Real McCoy bull. Ruger has a DNA score of 9 out of 10 for calving ease. His birth weight EPD is in the top 15% of the Angus breed. His \$EN EPD is in the top 2%. Ruger is co-owned with Flying S Ranch in Kansas. Limited semen inventory.

BLACK ANGUS



Alamo

Birth Date: 5/16/2006 **Reg #:** 15611939 **A2 Beta Casein:** A2/A2
EPDs: B. Wt. -1.1 **W. Wt.** 20 **Y. Wt.** 32 **Milk** 18
Frame: N/A **Price:** \$10/straw \$35/certificate

Our Genetic Predictions

Calving Ease: ★★★★★ **Udder:** ★★★★★
Fleshing Ability: ★★★★★ **Disposition:** ★★★★★

PCC Alamo 1125S

OCC Anchor 771A	DHD Traveler 6807
OCC Emancipate 889E	OCC Juanada 709V
Dixie Erica of RR 4309	Shoshone Vantage JB23
	Dixie Erica of RR 6124
Bear of Wye UMF 6591	Lambdin of Wye UMF 6278
OCC Juanada 722F	Blackbird of Wye UMF 6324
OCC Juanada 728D	OCC BULLION 822B
	OCC Juanada 801B

Alamo is the result of flushing a favorite Bear of Wye daughter to Emancipate. His dam produced until she was 10 years old, when she was found dead late in the summer (lightning). Alamo's birth weight EPD is in the top 10% of the Angus breed. His \$EN EPD is in the top 1%. At \$10 per straw, Alamo is a real steal! He is co-owned with 4-P Farms in Colorado.



Colorado Rebel

Birth Date: 5/8/2013 **Reg #:** 17741052 **A2 Beta Casein:** A2/A2
EPDs: B. Wt. -3.2 **W. Wt.** 21 **Y. Wt.** 48 **Milk** 26
Frame: 3.5 (est) **Price:** \$20/straw \$35/certificate

Our Genetic Predictions

Calving Ease: ★★★★★ **Udder:** ★★★★★
Fleshing Ability: ★★★★★ **Disposition:** ★★★★★

PCC Colorado Rebel 1057A

OCC Homer 650H	OCC Focus 813F
PCC MH Rebel 2009R	OCC Dixie Erica 816B
MH Beauty 148	OCC Emblazon 854E
	M H Beauty 907
Beral of Wye UMF 9288	Alap of Wye UMF 8329
PCC Dixie Erica Y1047	Blackbird of Wye UMF 7620
P C C Dixie Erica P411	OCC Emancipate 889E
	PCC Modest Dixie 209



Colorado Rebel is a very impressive Rebel son out of a Beral of Wye daughter that was out of our favorite P411 cow. He is a 20-Star bull that combines extreme thickness and fleshing ability with extreme calving ease. Colorado Rebel's birth weight EPD is in the top 1% of the Angus breed. His \$EN EPD is in the top 5%. Colorado Rebel is co-owned with Bruns Angus in Nebraska.

BLACK ANGUS



Sledge Hammer

Birth Date: 2/28/2018 **Reg #:** 19158189 **A2 Beta Casein:** A2/A2
EPDs: B. Wt. -5.5 **W. Wt.** 35 **Y. Wt.** 57 **Milk** 26
Frame: 3.5 **Price:** \$10/straw \$35/certificate

Our Genetic Predictions

Calving Ease: ★★★★★	Udder: ★★★★★
Fleshing Ability: ★★★★★	Disposition: ★★★★★

PCC FSR Real McCoy 1918X	PCC Ruger 1042T
PCC FSR Cold Fire 1892C	FSR Miss Rebel 826
FSR Miss Rebel Star 864	PCC MH Rebel 2009R
PCC FSR Sledge Hammer 1923F	FSR Leprechaun 649
MH Tank 54	Lodge of Wye
MH Prudence 727	MH Mina 836
MH Prudence 315	OCC Homer 650H
	MH Prudence 120

Sledge Hammer is another impressive 20-Star bull. He is a Real McCoy grandson with some Wye breeding on the bottom side of his pedigree. He has extreme calving ease. His birth weight and calving ease direct EPDs are both in the top 1/2 of 1% of the Angus breed. His \$EN value is in the top 3% of the breed. Sledge Hammer is co-owned with Flying S Ranch in Kansas.

BLACK ANGUS



Jester

Birth Date: 5/10/2017 **Reg #:** 19026311 **A2 Beta Casein:** A2/A2
EPDs: B. Wt. -0.8 **W. Wt.** 37 **Y. Wt.** 69 **Milk** 20
Frame: 4.0 (est) **Price:** \$20/straw \$35/certificate

Our Genetic Predictions

Calving Ease: ★★★★★ **Udder:** ★★★★★
Fleshing Ability: ★★★★★ **Disposition:** ★★★★★



PCC BA Jester 2354E

PCC FSR Real McCoy 1918X PCC FSR Total Package 1925A JAD Barbara S08 PCC ICE Rebel Stout 2952X BA Katy 426 KR Bando 602P-70-57	PCC Ruger 1042T FSR Miss Rebel 826 JAD Matrix M604 J A D Miss Barbara 5652 PCC MH Rebel 2009R BAA Barbara 5225A FCC Pacesetter 602P K R Bando 645L 57 115
---	--

Jester is a Real McCoy grandson that goes back to the great PCC MH Rebel bull on both sides of his pedigree. Jester's birth weight and calving ease direct EPDs are both in the top 15% of the Angus breed. His \$EN EPD is in the top 4%. Jester is co-owned with the 1883 Ranch and Bruns Angus, both in Nebraska.



Riptide

Birth Date: 3/21/2016 **Reg #:** 18660308 **A2 Beta Casein:** A2/A2
EPDs: B. Wt. -4.5 **W. Wt.** 12 **Y. Wt.** 39 **Milk** 26
Frame: 3.5 (est) **Price:** \$30/straw \$35/certificate

Our Genetic Predictions



Calving Ease: ★★★★★ **Udder:** ★★★★★
Fleshing Ability: ★★★★★ **Disposition:** ★★★★★



PCC FSR Riptide 3598D

PCC FSR Real McCoy 1918X PCC FSR Skywalker 1997A FSR Miss Rebel 754 PCC Colorado Hunter 1062P MH Clova Pride 20 MH Clova Pride 105	PCC Ruger 1042T FSR Miss Rebel 826 PCC MH Rebel 2009R 4-P Rolla R522 Moderator PC 4034 PCC Dixie Erica 0122 Octoraro Rito 503 Black Tooth Clova 215Y
---	---

Riptide is a Real McCoy grandson that worked on a high-elevation ranch in Colorado for several years. He has a PAP score of 37. Riptide sires calves with tremendous thickness, muscling and fleshing ability. His birth weight EPD is in the top 1% of the Angus breed. He is a very low-maintenance bull with a \$EN EPD in the top 4%. Riptide is co-owned with Pulliam Angus Ranch in Colorado and Flying S Ranch in Kansas. Limited semen inventory.

BLACK ANGUS



Ranger

Birth Date: 4/28/2013 **Reg #:** 17788613 **A2 Beta Casein:** A2/A2
EPDs: B. Wt. 0.0 **W. Wt.** 35 **Y. Wt.** 54 **Milk** 20
Frame: 3.5 (est) **Price:** \$10/straw \$35/certificate



Our Genetic Predictions

Calving Ease: ★★★★★ **Udder:** ★★★★★
Fleshing Ability: ★★★★★ **Disposition:** ★★★★★

PCC PL Ranger 2450A

OCC Emblazon 854E	DHD Traveler 6807
PCC OAO Open Range 1241Y	Dixie Erica of CH 1019
DDA Sandy 404	Banjo of Wye UMF 6413
	Miss Diamond Jumbo 587
	OCC Homer 650H
MH Magua 27	MH Roda Lass 033
Tuned Magua PL Y11	Treffler Validate 0329
Treffler Tune 6151	T A R Dona Tune 0067

Ranger's sire, Open Range, is an Emblazon son out of the Sandy 404 cow that produced until she was 16 years old. Ranger worked very well on a high-elevation ranch for seven years. Ranger has a DNA score for calving ease of 9 out of 10 — so you can use him on virgin heifers with confidence. He is co-owned with Pulliam Angus Ranch in Colorado and Landrigan Livestock in Nebraska.



Yellowstone

Birth Date: 5/11/2019 **Reg #:** 19612319 **A2 Beta Casein:** A1/A2
EPDs: B. Wt. -1.1 **W. Wt.** 25 **Y. Wt.** 46 **Milk** 17
Frame: 4.0 (est) **Price:** \$20/straw \$35/certificate

Our Genetic Predictions

Calving Ease: ★★★★★ **Udder:** ★★★★★
Fleshing Ability: ★★★★★ **Disposition:** ★★★★★



Sire of Yellowstone



Pending

PCC 4-P Yellowstone 1409G

Beral of Wye UMF 9288	Alap of Wye UMF 8329
PCC Tom Cat 1064C	Blackbird of Wye UMF 7620
PCC Bench Lass X0063	MH Magua 27
	PCC Bench Lass T7038
	Beral of Wye UMF 9288
PCC TQ Bonaparte N06W	TQ Elizabeth 6N
TQ Onie 53A	PCC TQ Thick Line N56U
TQ Onie 88X	TQ Onie 93U

Yellowstone is a Tom Cat son that goes back to Beral of Wye on both sides of his pedigree. He had more guts and volume than any bull we had ever seen at 18 months of age. Yellowstone is a very early-maturing bull with 5-star grass efficiency. His birth weight EPD is in the top 10% of the Angus breed. Yellowstone is co-owned with Lost Creek Cattle in North Dakota and 4-P Farms in Colorado.

BLACK ANGUS



GameChanger

Birth Date: 4/13/2019 **Reg #:** 19834607 **A2 Beta Casein:** A1/A2
EPDs: B. Wt. -0.8 **W. Wt.** 35 **Y. Wt.** 46 **Milk** 19
Frame: 3.0 **Price:** \$30/straw \$35/certificate

Our Genetic Predictions

Calving Ease: ★★★★★	Udder: ★★★★★
Fleshing Ability: ★★★★★	Disposition: ★★★★★



DDA Pinebank 50H
Old Fahrens Blaze 723C
Ole Pridemere 385Y
GameChanger of Hague 918
Resurgam Ngahere U407
Lady Ida of Hague 1624
HAR Lady Ida Y070 1204

Pinebank Waigroup 41/97
Melisa 206 DDA
Sinclair Everlast 6R107
Old Pridemere 31U
Pinebank Waigroup 41/97
Resurgam Souvenir S253
Dunlouse Excalibur Y070
Lady Ida Manning Volga 9708

We added GameChanger and Gambino to our program to bring in some unique genetics from the Pinebank Angus program in New Zealand. This program has adhered to philosophies very similar to ours for over 50 years. GameChanger goes back to the great Pinebank Waigroup 41/97 bull on both sides of his pedigree. He is an extremely thick, easy-fleshing bull — with a 5++ disposition. His birth weight EPD is in the top 15% of the Angus breed. GameChanger is co-owned with Hague Angus Ranch and Pharo Ranch.

BLACK ANGUS



Gambino

Birth Date: 4/10/2019 **Reg #:** 19834620 **A2 Beta Casein:** A2/A2
EPDs: B. Wt. -0.7 **W. Wt.** 27 **Y. Wt.** 42 **Milk** 18
Frame: 4.0 **Price:** \$10/straw \$35/certificate

Our Genetic Predictions

Calving Ease: ★★★★★	Udder: ★★★★★
Fleshing Ability: ★★★★★	Disposition: ★★★★★

Gambino of Hague 933

Pinebank Waigroup 45/02	Pinebank Waigroup 3/00
Pinebank Waigroup 152/04	Pinebank Waigroup 75/99
Pinebank Waigroup 86/96	Shalom 486/93
Dunlouse Jipsey Earl E161	Pinebank Waig61/93
Stella of Hague 1403	Betro of Classlochie
DDA Stella 443	Dunlouse Jipsey Clova C095
	DDA Ally 69C
	DDA Stella 216

Gambino is the best son of Pinebank Waigroup 152/04 we have ever seen. His dam is a Jipsey Earl daughter. Jipsey Earl is a 100% old Scottish-bred bull that is also the sire of our Mojo bull. We think Gambino will provide a great outcross to our existing Angus genetics. His birth weight EPD is in the top 15%. Gambino is co-owned with Hague Angus Ranch and Pharo Ranch.



Two Dot

Birth Date: 5/9/2023 **Reg #:** 20888537 **A2 Beta Casein:** A2/A2
EPDs: B. Wt. -1.0 **W. Wt.** 44 **Y. Wt.** 65 **Milk** 20
Frame: 3.5 (est) **Price:** \$25/straw \$35/certificate

Our Genetic Predictions

Calving Ease: ★★★★★	Udder: ★★★★★
Fleshing Ability: ★★★★★	Disposition: ★★★★★



PCC LCC Two Dot 3315L

PCC FSR Ricochet 1935C	PCC OAO Amarillo 1237Z
PCC 83R GPower 3624G	FSR Missy A3074
FSR Lucy D6026	PCC FSR Hayden 2076Y
TQ Otto B55E	MH Lucy 160
LCC Blackbird J106	TQ Masters Blend N56a
LCC Blackbird E702	TQ Bess 55B
	PCC OAO Amarillo 1237Z
	LCC Blackbird C501

 Semen is available for export for \$37 (US) per straw.

Two Dot is a son of GPower that goes back to Amarillo on both sides of his pedigree. When he sold in our 2024 Montana Sale, Two Dot had very impressive 5+ ratings for masculinity, muscling, thickness and overall rating. He has a DNA score for calving ease of 8.5 out of 10. His birth weight EPD is in the top 10% of the Angus breed. His \$EN EPD is in the top 2%. Two Dot is co-owned with Lost Creek Cattle in North Dakota and Pat Rutledge in Alberta.

RED ANGUS



Herd Quitter

Birth Date: 5/13/2011	Reg #: 1485432	A2 Beta Casein: A2/A2
EPDs: B. Wt. -2.7	W. Wt. 49	Y. Wt. 74 Milk 23
Frame: 4.5		Price: \$30/straw

Our Genetic Predictions

Calving Ease: ★★★★★	Udder: ★★★★★
Fleshing Ability: ★★★★★	Disposition: ★★★★★

Semen is available for export for \$42 (US) per straw.



	OCC No Doubt 622N	PCC Colorado Hobo
	PCC Johnny B Good 4003R	OCC Vanessa 601L
	PCC Sierra 539	BJR C-Chief 811
PCC Herd Quitter 4024Y	MH Magua 27	Beckton Sierra ZA30 RV
	PCC Miss Boot Jack S6022	OCC Homer 650H
	PCC Miss Bootjack M67	MH Roda Lass 033
		PCC Colorado Hobo
		PCC Miss Bootjack 301

Herd Quitter is our favorite Johnny B Good son. He has a very unique pedigree! His dam is a red Magua daughter that produced until she was 14 years old — and still had a great udder! Like most Johnny B Good sons, Herd Quitter combines calving ease with outstanding thickness, muscling, masculinity and fleshing ability. His birth weight EPD is in the top 34% the Red Angus breed. Herd Quitter is co-owned with Landrigan Livestock in Nebraska and Pharo Ranch in Colorado.

RED ANGUS



Johnny Angel

Birth Date: 5/14/2008 Reg #: 1273867 A2 Beta Casein: A2/A2
 EPDs: B. Wt. -2.2 W. Wt. 34 Y. Wt. 48 Milk 26
 Frame: 3.0 Price: \$20/straw

Our Genetic Predictions

Calving Ease: ★★★★★ Udder: ★★★★★
 Fleshing Ability: ★★★★★ Disposition: ★★★★★



PCC Johnny Angel 4094U

OCC No Doubt 622N PCC Colorado Hobo
 PCC Johnny B Good 4003R OCC Vanessa 601L
 PCC Sierra 539 BJR C-Chief 811
 Beckton Sierra ZA30 RV
 PCC Cinco de Mayo H8130 Buf Crk Copper 1924-5239
 PCC Cinco Lass L18 BKT Angel 9A40 BT
 RKJ Hero 518 518 853 Lman Hero 9558
 MCRT Kansas 099 648 518

Johnny Angel is a Johnny B Good son out of a Cinco de Mayo daughter. Cinco de Mayo is a maternal 1/2 brother to our all-time favorite Angel cow. Johnny Angel's calving ease direct EPD is in the top 24% of the Red Angus breed. His maintenance energy EPD is in the top 4% of the breed. Johnny Angel is co-owned with Agape Cattle Company in Texas. Very limited semen inventory.



Higgins

Birth Date: 9/12/2020 Reg #: 4460045 A2 Beta Casein: A2/A2
 EPDs: B. Wt. -3.3 W. Wt. 33 Y. Wt. 51 Milk 24
 Frame: 3.0 Price: \$40/straw

Our Genetic Predictions

Calving Ease: ★★★★★ Udder: ★★★★★
 Fleshing Ability: ★★★★★ Disposition: ★★★★★



PCC Tcag Higgins 5801H

PCC Johnny B Good 4003R OCC No Doubt 622N
 PCC Johnny Angel 4094U PCC Sierra 539
 PCC Cinco Lass L18 PCC Cinco de Mayo H8130
 RKJ Hero 518 518 853
 PCC ACT Crandall 5370C RF 5-Star Gold 4550P
 ACT 1832 CFL 1325
 CFL 1240 PCC LLL Johnny Mizzou 5916W
 0101 JAN Miller Chief

Higgins is a Johnny Angel son out of a Crandall daughter. He has perfect feet! Higgins has 5-star grass efficiency, masculinity, muscling and thickness. His calving ease direct EPD is in the top 11% of the Red Angus breed. His maintenance energy EPD is in the top 3%. Higgins is co-owned with 5P Farms in Oklahoma and Terrell Creek Adapted Genetics in Missouri.

RED ANGUS



Johnny Mizzou

Birth Date: 9/7/2009
EPDs: B. Wt. -3.6
Frame: 3.5

Reg #: 1370667
W. Wt. 44

A2 Beta Casein: A2/A2
Y. Wt. 72
Milk 25
Price: \$30/straw

Our Genetic Predictions

Calving Ease: ★★★★★	Udder: ★★★★★
Fleshing Ability: ★★★★★	Disposition: ★★★★★



Semen is available for export for \$42 (US) per straw.
— Not available in Canada —



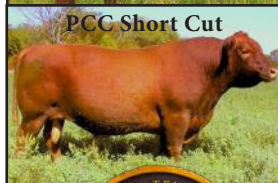
OCC No Doubt 622N
PCC Johnny B Good 4003R
PCC Sierra 539
PCC LLL Johnny Mizzou 5916W
PCC Short Cut L05
LLL Shorty's Blackbird 404
LLL Blackbird 234

PCC Colorado Hobo
OCC Vanessa 601L
BJR C-Chief 811
Beckton Sierra ZA30 RV
Colorado Shorty 894F
PCC Miss Forager 839
LLL Bandicoot 005
LLL New Trends Blackbird 909

Johnny Mizzou was one of the most impressive Red Angus bulls to come through our Missouri forage test program. He rated a 5 and 5+ for everything we evaluated and scored. He is a Johnny B Good son out of a Short Cut daughter. Johnny Mizzou's maintenance energy EPD is in the top 7% of the Red Angus breed. His calving ease direct EPD is in the top 18%. This bull is doing great things in Red Angus programs around the world. He is co-owned with Triple L Red Angus in Missouri.

RED ANGUS

Yazzou



Birth Date: 8/1/2013 **Reg #:** 1670103 **A2 Beta Casein:** A2/A2
EPDs: B. Wt. -3.5 **W. Wt.** 38 **Y. Wt.** 63 **Milk** 28
Frame: 3.5 (est) **Price:** \$20/straw

Our Genetic Predictions

Calving Ease: ★★★★★ **Udder:** ★★★★★
Fleshing Ability: ★★★★★ **Disposition:** ★★★★★

PCC LLL Yazzou 5920A

PCC Johnny B Good 4003R	OCC No Doubt 622N
PCC LLL Johnny Mizzou 5916W	PCC Sierra 539
LLL Shorty's Blackbird 404	PCC Short Cut L05
PCC Short Cut L05	LLL Blackbird 234
LLL Lass X419	Colorado Shorty 894F
LLL Lass 419	PCC Miss Forager 839
	PCC Short Cut L05
	K G Lass 72

Yazzou's pedigree goes back to the great Short Cut bull three times. Short Cut naturally sired over 1000 calves in a ten year period (spring and fall calving herds). Yazzou's calving ease direct EPD is in the top 18% of the Red Angus breed. His maintenance energy value is in the top 3%. Yazzou is co-owned with Triple L Red Angus in Missouri. Very limited semen inventory.



Johnny B Special

Birth Date: 4/27/2011 **Reg #:** 1485431 **A2 Beta Casein:** A2/A2
EPDs: B. Wt. -1.4 **W. Wt.** 35 **Y. Wt.** 55 **Milk** 15
Frame: 3.0 **Price:** \$20/straw

Our Genetic Predictions

Calving Ease: ★★★ **Udder:** ★★★★★
Fleshing Ability: ★★★★★ **Disposition:** ★★★★★

PCC Johnny B Special 4023Y

OCC No Doubt 622N	PCC Colorado Hobo
PCC Johnny B Good 4003R	OCC Vanessa 601L
PCC Sierra 539	BJR C-Chief 811
BAA Viking 5105A	Beckton Sierra ZA30 RV
PCC Miss Roxie W9069	BAA Slugger 310A
PCC Miss Roxie 620	Black Bull Blackcap N4V
	Buf Crk Hobo 1961
	JWJ Rock & Fire 0083 1069



Johnny B Special is a Johnny B Good son that has produced some outstanding replacement females. The bottom side of his pedigree goes back to some Black Angus genetics with superb longevity and udder conformation. Use this bull to improve udders. Johnny B Special's maintenance energy EPD is in the top 1% of the breed. He is co-owned with Pharo Ranch in Colorado.

RED ANGUS



Festus

Birth Date: 5/13/2016

Reg #: 3599799

A2 Beta Casein: A2/A2

EPDs: B. Wt. -3.3

W. Wt. 31

Y. Wt. 49

Milk 28

Frame: 3.5 (est)

Price: \$30/straw

Our Genetic Predictions

Calving Ease: ★★★★★

Udder: ★★★★★

Fleshing Ability: ★★★★★

Disposition: ★★★★★



Semen is available for export for \$42 (US) per straw.



PCC Festus 4102D

PCC Short Cut L05
PCC REI Super Pud 5216W
REI Star

PCC Good As Gold 4010U
PCC Angel Z2070
PCC Angel U8066

Colorado Shorty 894F
PCC Miss Forager 839
RF 5-Star Gold 4550P
PCC Colorado Angel M01
RF 5-Star Gold 4550P
PCC Somethin' Special P1061
PCC Colorado Hobo
Beckton Angel CB82 JL

Festus is an extremely masculine Super Pud son. He ain't no sissy bull! Festus goes back to our favorite Angel cow on both sides of his pedigree. His birth weight EPD is in the top 25% of the Red Angus breed. His maintenance energy EPD is in the top 3%. Festus has great foot structure, which is missing in most of today's Red Angus programs. He is co-owned with Luis Valles of La Lagartija Cattle Company in Mexico and Pharo Ranch in Colorado.

RED ANGUS



Hercules

Birth Date: 5/14/2020 **Reg #:** 4383371 **A2 Beta Casein:** A2/A2
EPDs: B. Wt. -3.5 **W. Wt.** 60 **Y. Wt.** 84 **Milk** 33
Frame: 3.5 (est) **Price:** \$40/straw

Our Genetic Predictions

Calving Ease: ★★★★★ **Udder:** ★★★★★
Fleshing Ability: ★★★★★ **Disposition:** ★★★★★



PCC CTM Hercules 5100H

PCC Short Cut L05
 PCC REI Super Pud 5216W
 REI Star
 PCC DC Meatball 5017X
 CTM Lark X012-MTBL-A312
 CTM Lark 2061 Cohi X012

Colorado Shorty 894F
 PCC Miss Forager 839
 RF 5-Star Gold 4550P
 PCC Colorado Angel M01
 OCC Kissimmee 754K
 DC Alice-77
 PCC Colorado High 4042P
 RF Lark 9015-1800-2193

Hercules is another Super Pud son that goes back to our all-time favorite Angel cow on both sides of his pedigree. He is the total package — with 5-star ratings for grass efficiency, fleshing ability, masculinity, muscling, thickness and fly resistance. His calving ease direct EPD is in the top 14% of the Red Angus breed. Hercules is co-owned with McDaniel Ranch in Montana.



Jackpot

Birth Date: 4/26/2021 **Reg #:** 4557091 **A2 Beta Casein:** A2/A2
EPDs: B. Wt. 0.2 **W. Wt.** 57 **Y. Wt.** 92 **Milk** 23
Frame: 4.0 (est) **Price:** \$20/straw

Our Genetic Predictions

Calving Ease: ★★★ **Udder:** ★★★★★
Fleshing Ability: ★★★★★ **Disposition:** ★★★★★



PCC N-K Jackpot 4306J

PCC Short Cut L05
 PCC REI Super Pud 5216W
 REI Star
 PCC Johnny B Good 4003R
 NK Belga 506C
 WFF MS Belga KTH 0512X

Colorado Shorty 894F
 PCC Miss Forager 839
 RF 5-Star Gold 4550P
 PCC Colorado Angel M01
 OCC No Doubt 622N
 PCC Sierra 539
 MB Red Keith 7224
 MB Red Lori 8258

Jackpot is a Super Pud son out of a nice-uddered Johnny B Good daughter. He has impressive 5-star ratings for grass efficiency, masculinity, muscling and thickness. Jackpot's maintenance energy EPD is in the top 5% of the Red Angus breed. He is A2/A2 and Certified Tenet®. At \$20, he is a real steal! Jackpot is co-owned with N-K Angus Ranch and Flying S Ranch, both in Kansas.

RED ANGUS

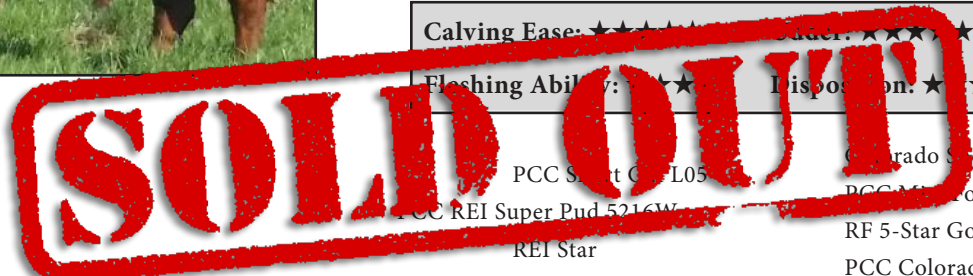


Braveheart

Birth Date: 9/13/2014 **Reg #:** 1738360 **A2 Beta Casein:** A2/A2
EPDs: B. Wt. -4.4 **W. Wt.** 36 **Y. Wt.** 57 **Milk** 35
Frame: 4.0 (est) **Price:** \$20/straw

Our Genetic Predictions

Calving Ease: ★★★★★	Udder: ★★★★★
Fleshing Ability: ★★★★★	Disposition: ★★★★★



PCC WFF Braveheart 4515B

OH Thompson 4203R WFF Ms Emulous Thom 8501U OH Ms Emulous Mm 4553	Colorado Sporty 894F PCC M... forager 839 RF 5-Star Gold 4550P PCC Colorado Angel M01 OCC No Doubt 622N OH Miss Harpo 957 OCC Medicine Man 602M SIXL MS Hobo 799
---	---

Braveheart is an extremely thick, heavy-muscled Super Pud son. He has great calving ease, with a birth weight EPD in the top 12% of the Red Angus breed. His maintenance energy EPD is in the top 3%. Braveheart passes on great hair coats and fly resistance. He is co-owned with Walker Cattle Company in Missouri, Bar S Ranch in Kansas and R2 Ranch in Texas. Very limited semen inventory.



Hiawatha

Birth Date: 4/4/2020 **Reg #:** 4285161 **A2 Beta Casein:** A2/A2
EPDs: B. Wt. -5.3 **W. Wt.** 40 **Y. Wt.** 70 **Milk** 31
Frame: 4.0 (est) **Price:** \$20/straw

Our Genetic Predictions

Calving Ease: ★★★★★	Udder: ★★★★★
Fleshing Ability: ★★★★★	Disposition: ★★★★★

PCC BSR Hiawatha 4930H

PCC REI Super Pud 5216W PCC WFF Braveheart 4515B WFF Ms Emulous Thom 8501U PCC LLL Weston 5912W BSR Ruby C522 LRAR HV Ruby S013	PCC Short Cut L05 REI Star OH Thompson 4203R OH Ms Emulous Mm 4553 PCC Johnny B Good 4003R LLL EZ Barbara 718 Beckton Saga F321 KJ LRAR HV Ruby H17
--	--



Semen is available for export for \$32 (US) per straw.

Hiawatha is a 20-Star Braveheart son with extreme calving ease. His birth weight and calving ease direct EPDs are both in the top 8% of the Red Angus breed. His maintenance energy EPD is in the top 7%. Hiawatha goes back to Johnny B Good on the bottom side of his pedigree. He is being used heavily in the US and Australia. Hiawatha is co-owned with Bar S Ranch in Kansas.

RED ANGUS



Gold Mine

Birth Date: 5/8/2019 **Reg #:** 4239466 **A2 Beta Casein:** A2/A2
EPDs: B. Wt. -4.2 **W. Wt.** 38 **Y. Wt.** 60 **Milk** 32
Frame: 4.0 (est) **Price:** \$40/straw

Our Genetic Predictions

Calving Ease: ★★★★★ **Udder:** ★★★★★
Fleshing Ability: ★★★★★ **Disposition:** ★★★★★



PCC CTM Gold Mine 5149G

PCC Short Cut L05
 PCC REI Super Pud 5216W
 REI Star
 PCC Gold Standard 4013T
 CTM Betty 4013-823-001
 CTM Lark 4429-3167-823

Colorado Shorty 894F
 PCC Miss Forager 839
 RF 5-Star Gold 4550P
 PCC Colorado Angel M01
 RF 5-Star Gold 4550P
 PCC Colorado Dream P1051
 PCC OH Cash Crop 4429P
 RF Betty 831-6007-3167



Semen is available for export for \$52 (US) per straw.

Gold Mine is another outstanding Super Pud son. His dam is still going at 16 years of age. Gold Mine goes back to 5-Star Gold on both sides of his pedigree. He has impressive 5-star ratings for grass efficiency, masculinity, muscling and thickness. Gold Mine's birth weight EPD is in the top 14% of the Red Angus breed. He is co-owned with McDaniel Ranch in Montana.



Kody

Birth Date: 4/29/2022 **Reg #:** 4716269 **A2 Beta Casein:** A2/A2
EPDs: B. Wt. -3.4 **W. Wt.** 45 **Y. Wt.** 72 **Milk** 31
Frame: 3.5 (est) **Price:** \$25/straw

Our Genetic Predictions

Calving Ease: ★★★★★ **Udder:** ★★★★★
Fleshing Ability: ★★★★★ **Disposition:** ★★★★★



PCC CTM Kody 5107K

PCC REI Super Pud 5216W
 PCC CTM Gold Mine 5149G
 CTM Betty 4013-823-001
 Red Edie Creek Easy 31D
 CTM Boot Jack H093
 CTM Boot Jack 404-CMAG-E745

PCC Short Cut L05
 REI Star
 PCC Gold Standard 4013T
 CTM Lark 4429-3167-823
 Red OCC Easy RED 868A
 Red Crowfoot Lady 6503S
 PCC ICE Colorado Magua 5417A
 CTM Miss BJ Y1060-COHI-B404

Kody is a top-sort Gold Mine son. He has 5-star ratings for fleshing ability, grass efficiency, muscling and thickness. Kody's calving ease direct EPD is in the top 18% of the Red Angus breed. His maintenance energy EPD is in the top 11%. Kody is co-owned with Landrigan Livestock in Nebraska and McDaniel Ranch in Montana.

RED ANGUS



Parker

Birth Date: 4/26/2015 **Reg #:** 1741453 **A2 Beta Casein:** A2/A2
EPDs: B. Wt. -3.0 **W. Wt.** 55 **Y. Wt.** 78 **Milk** 29
Frame: 3.5 (est) **Price:** \$25/straw

Our Genetic Predictions

Calving Ease: ★★★★★ **Udder:** ★★★★★
Fleshing Ability: ★★★★★ **Disposition:** ★★★★★



PCC DC Parker 5055C

PCC Short Cut L05
 PCC High Plains 4033X
 PCC Colorado Angel P1055
 PCC D-7 Hoodoo 4718X
 DC Hanako A320
 DC Jackie Y116

Colorado Shorty 894F
 PCC Miss Forager 839
 PCC Colorado Hobo
 Beckton Angel CB82 JL
 PCC RF Mash 4516T
 Beckton Minola P826 DM
 PCC Johnny B Good 4003R
 DC Alice-77

Parker is a Short Cut grandson that goes back to Johnny B Good on the bottom side of his pedigree. He has a DNA calving ease score of 8 out of 10. Parker also has impressive 5-star ratings for fleshing ability, thickness, masculinity and muscling. He is co-owned with Agape Cattle Company in Texas and Dry Creek Red Angus in Minnesota.



5-Star Gold

Birth Date: 3/15/2004 **Reg #:** 1000253 **A2 Beta Casein:** A2/A2
EPDs: B. Wt. -2.2 **W. Wt.** 49 **Y. Wt.** 76 **Milk** 22
Frame: 4.0 **Price:** \$20/straw

Our Genetic Predictions

Calving Ease: ★★★★★ **Udder:** ★★★★★
Fleshing Ability: ★★★★★ **Disposition:** ★★★★★



Pending

RF 5-Star Gold 4550P

Sams Prospector 133Z
 RF Samson 9015
 RF Marie 8968-473-1772
 BKT Viking 8968 XM
 RF Marie 8968-473-1772
 RL Marie 94-976-473

TLA Northern Samurai
 KBJ Round Lassie 18T
 BKT Viking 8968 XM
 RL Marie 94-976-473
 Beckton Viking 8099X
 Beckton Lana 7972NV
 RL Drng 7567-726-94
 RL Marie 735-269-976

5-Star Gold is tightly linebred to a very special cow (pictured). He and his sire have the same momma. This cow produced until she was 15 years old. 5-Star Gold can be found in 40% of the Red Angus pedigrees in this sire directory. Since all of those bulls are Certified Tenet®, we have to assume 5-Star Gold is Tenet. 5-Star Gold has a 9 out of 10 DNA score for calving ease. He is co-owned with the R2 Ranch in Texas and the Red Fork Ranch in Wyoming.

RED ANGUS



Crandall

Birth Date: 9/26/2015 **Reg #:** 3523190 **A2 Beta Casein:** A2/A2
EPDs: B. Wt. -2.7 **W. Wt.** 47 **Y. Wt.** 76 **Milk** 22
Frame: 3.5 (est) **Price:** \$40/straw

Our Genetic Predictions

Calving Ease: ★★★★★ **Udder:** ★★★★★
Fleshing Ability: ★★★★★ **Disposition:** ★★★★★



PCC ACT Crandall 5370C

RF Samson 9015 RF 5-Star Gold 4550P RF Marie 8968-473-1772 PCC LLL Johnny Mizzou CFL 1325 1006 Miller Choctaw Chief	Sams Prospector 133Z RF Marie 8968-473-1772 BKT Viking 8968 XM RL Marie 94-976-473 PCC Johnny B Good 4003R LLL Shorty's Blackbird 404 0244 Miller Choctaw Chief 373 0755 Miller H3554 Chief
--	--

Crandall is a 5-Star Gold son out of a Johnny Mizzou daughter. When he was evaluated at 15 months of age, he was given very impressive 5+ scores for muscling, masculinity and overall rating. We don't know of a bull in the Red Angus breed that has a better hair coat. Crandall is co-owned with Agape Cattle Company in Texas, 5P Farms in Oklahoma and Walker Cattle Company in Missouri.



Ellinger

Birth Date: 9/24/2017 **Reg #:** 3834309 **A2 Beta Casein:** A2/A2
EPDs: B. Wt. -3.8 **W. Wt.** 47 **Y. Wt.** 74 **Milk** 25
Frame: 3.5 (est) **Price:** \$30/straw

Our Genetic Predictions

Calving Ease: ★★★★★ **Udder:** ★★★★★
Fleshing Ability: ★★★★★ **Disposition:** ★★★★★



PCC ACT Ellinger 5312E

RF Samson 9015 RF 5-Star Gold 4550P RF Marie 8968-473-1772 PCC LLL Johnny Mizzou 5916W ACT 1406 1014 Miller Choctaw Chief	Sams Prospector 133Z RF Marie 8968-473-1772 BKT Viking 8968 XM RL Marie 94-976-473 PCC Johnny B Good 4003R LLL Shorty's Blackbird 404 0244 Miller Choctaw Chief 373 0752 Miller Cherokee Ghief
--	---

Ellinger is another 5-Star Gold son out of a Johnny Mizzou daughter. He is actually a 7/8 brother to Crandall. Ellinger has very impressive 5+ and 5++ ratings for disposition, muscling, masculinity and hair coat. His calving ease direct EPD is in the top 9% of the Red Angus breed. Ellinger is co-owned with Agape Cattle Company in Texas and Landrigan Livestock in Nebraska.

RED ANGUS

Macho Man

Birth Date: 4/29/2024
EPDs: B. Wt. -4.0
Frame: 4.0

Reg #: 5027599
W. Wt. 41

A2 Beta Casein: A2/A2
Y. Wt. 63
Milk 25
Price: \$30/straw

Our Genetic Predictions

Calving Ease: ★★★★★	Udder: ★★★★★
Fleshing Ability: ★★★★★	Disposition: ★★★★★



PCC Macho Man 4026M

PCC OH Care Free 5501B
PCC ACT Extraordinary 5330E
CFL 1315

PCC Johnny B Special 4023Y
PCC Dixie Erica D6054
PCC Dixie Erica Y1040

PCC Kaycee Hobo 4004S
OH MS Emulous M178 965W
PCC Short Cut L05
CFL 1050
PCC Johnny B Good 4003R
PCC Miss Roxie W9069
PCC OH Pledge 2357P
PCC Dixie Erica T7040

Macho Man's pedigree is stacked for maternal greatness — with Kaycee Hobo, Short Cut, Johnny B Special and Pledge. His momma produced until she was eight. Her momma is still in production at 15. Macho Man's calving ease direct EPD is in the top 6% of the Red Angus breed. His maintenance energy EPD is in the top 1%. Co-owned with T & T Cattle in Wyoming and Pharo Ranch in Colorado.



Sire of Cliff

PCC DC Cliff 5056C

PCC D-7 Hoodoo 4718X
PCC DC Harvey 5025A
DC 357W Amy Cohi-345
PCC Hanky Panky 4013U
DC Hope Z230
DC 023X Joyce

Cliff

Birth Date: 4/29/2015
EPDs: B. Wt. -4.1
Frame: 3.0 (est)

Reg #: 1741425
W. Wt. 50

A2 Beta Casein: A2/A2
Y. Wt. 78
Milk 30
Price: \$10/straw

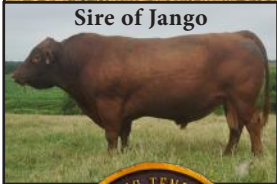
Our Genetic Predictions

Calving Ease: ★★★★★	Udder: ★★★★★
Fleshing Ability: ★★★★★	Disposition: ★★★★★

PCC RF Mash 4516T
Beckton Minola P826 DM
PCC Colorado High 4042P
DC 3145 124
PCC Señor Bajo 4024P
Beckton Angel CB82 JL
PCC OH Fabian 4261R
DC Rejoice N22K5

Cliff is a 20-Star bull that goes back to our favorite Angel cow on both sides of his pedigree. His sons and daughters are some of the best in the PCC Program. Cliff's calving ease direct EPD is in the top 5% of the Red Angus breed. His maintenance energy EPD is in the top 3%. Cliff is co-owned with Dry Creek Red Angus in Minnesota, Bar S Ranch in Kansas and R2 Ranch in Texas.

RED ANGUS



Sire of Jango



PCC DC Jango 5041J

Jango

Birth Date: 5/18/2021 **Reg #:** 4447605 **A2 Beta Casein:** A2/A2
EPDs: B. Wt. -2.1 **W. Wt.** 47 **Y. Wt.** 77 **Milk** 36
Frame: 4.0 (est) **Price:** \$30/straw

Our Genetic Predictions

Calving Ease: ★★★★★ **Udder:** ★★★★★
Fleshing Ability: ★★★★★ **Disposition:** ★★★★★

PCC D-7 Amazon 4735A PCC ACT Decatur 5316D CFL 1325 Redhill 132Y Ripper 69B OH Ms Emulous 69B 626D OH MS 147-437B	PCC RF Mash 4516T DeWit Minola R25 PCC LLL Johnny Mizzou 5916W 1006 Miller Choctaw Chief Redhill 28U Ripper 132Y Beckton Indigo X072 N PCC Kaycee Hobo 4004S OH Ms Emulous CC 147
--	--

We are extremely excited about this bull. Jango's pedigree goes back to Johnny Mizzou on the top and Kaycee Hobo on the bottom. He is an extremely thick and easy-fleshing bull — with 5-star masculinity and muscling. Jango has a DNA score for calving ease of 8.5 out of 10. He is co-owned with Dry Creek Red Angus in Minnesota, Bruns Red Angus in Nebraska and Pharo Ranch in Colorado.



Forte

Birth Date: 9/23/2018 **Reg #:** 4095492 **A2 Beta Casein:** A1/A2
EPDs: B. Wt. -4.2 **W. Wt.** 35 **Y. Wt.** 56 **Milk** 23
Frame: 4.0 (est) **Price:** \$20/straw

Our Genetic Predictions

Calving Ease: ★★★★★ **Udder:** ★★★★★
Fleshing Ability: ★★★★★ **Disposition:** ★★★★★

PCC D-7 Forte 4714F

PCC Kaycee Hobo 4004S PCC OH Care Free 5501B OH MS Emulous M178 965W SGG F60 Red Magua D-7 Lydia B57 D-7 Lydia Y86	Sodak Oscar 0366 PCC Red Wing 055 BTF 037 M178 MS Emulous 666 MH Magua 27 Kit's Juliana of Shortgrass PCC RF Mash 4516T Beckton Lydia M121 Wr
---	--



Semen is available for export for \$32 (US) per straw.

Forte has always been a 20-Star standout bull. He goes back to the great Sodak Oscar 0366 bull on the top side of his pedigree through Care Free and Kaycee Hobo. Sodak Oscar 0366, who was born in 1990, produced some of the best momma cows we have ever seen. Forte is an extremely thick, heavy-muscled bull with great calving ease. His calving ease direct EPD is in the top 7%. Forte is co-owned with Ozark Hills Genetics in Missouri, the D Bar 7 Ranch in Indiana and Pharo Ranch in Colorado.

RED ANGUS



Durango

Birth Date: 5/23/2016

Reg #: 3567131

A2 Beta Casein: A2/A2

EPDs: B. Wt. -3.7

W. Wt. 30

Y. Wt. 49

Milk 20

Frame: 3.5

Price: \$40/straw

Our Genetic Predictions

Calving Ease: ★★★★★

Udder: ★★★★★

Fleshing Ability: ★★★★★

Disposition: ★★★★★



PCC P-L Durango 5702D

MH Magua 27

PCC Sneaky Pete 1019X

PCC T Lass P416

REI Chunky's Remediate

Bruns T04-108

DGL Rose T04

OCC Homer 650H

MH Roda Lass 033

PCC Iron Man 049

PCC Enquisitive 212

OH Colorado Chunky 210

PCC Angel 352

Beckton Nexus L016

Beckton Rose J897 HD

Durango is a 20-Star bull that goes back to Magua (Angus bull with a red gene) on the top side of his pedigree. He goes back to our favorite Angel cow on the bottom. Durango's maintenance energy EPD is in the top 2% of the Red Angus breed. He has excellent foot and leg structure. Durango is co-owned with Landrigan Livestock in Nebraska.

Landmark

Birth Date: 5/18/2023

Reg #: 4872218

A2 Beta Casein: A2/A2

EPDs: B. Wt. -5.0

W. Wt. 35

Y. Wt. 54

Milk 24

Frame: 3.5 (est)

Price: \$25/straw

Our Genetic Predictions

Calving Ease: ★★★★★

Udder: ★★★★★

Fleshing Ability: ★★★★★

Disposition: ★★★★★



PCC Landmark 4131L

PCC Sneaky Pete 1019X

PCC P-L Durango 5702D

Bruns T04-108

PCC Herd Quitter 4024Y

PCC Colorado Dream E7052

PCC Colorado Dream X0046

MH Magua 27

PCC T Lass P416

REI Chunky's Remediate

DGL Rose T04

PCC Johnny B Good 4003R

PCC Miss Boot Jack S6022

PCC Short Cut L05

PCC Colorado Dream P1056

Landmark is a Durango son out of a Herd Quitter daughter. He is an extremely thick, heavy-muscled bull with great calving ease. His calving ease direct EPD is in the top 5% of the Red Angus breed. His maintenance energy EPD is in the top 2%. Landmark is co-owned with Landrigan Livestock in Nebraska, Bar S Ranch in Kansas and Flying S Ranch in Kansas.

RED ANGUS



Julian

Birth Date: 5/9/2019 **Reg #:** 4245048 **A2 Beta Casein:** Pending
EPDs: B. Wt. -8.1 **W. Wt.** 48 **Y. Wt.** 75 **Milk** 26
Frame: 4.0 (est) **Price:** \$30/straw

Our Genetic Predictions

Calving Ease: ★★★★★ **Udder:** ★★★★★
Fleshing Ability: ★★★★★ **Disposition:** ★★★★★



SDCC Julian 00G

Red Hill B571 Julian 84S
Calvo Julian 77C
Beckton Denise L639 JL
Beckton Nebula M045
SDCC Amber 04D
BUF CRK Amber M033

Beckton Julian GG B571
Beckton Barmaid M554 CH
Beckton Julian GG B571
Beckton Denise J550 CD
Beckton Neptune R2 K065
Beckton Belga K285 JL
BFCK Cherokee Cnyn 4912
BUF CRK Amber 3912

We've always been intrigued with Beckton Julian GG B571 (born in 1992). However, earlier attempts to utilize his genetics have disappointed us. We purchased this bull as a mature bull. He goes back to B571 three times — and he has not disappointed us. He is a very easy-fleshing bull with great feet. He has extreme calving ease and is gentle as a dead hog. Julian's birth weight EPD is in the top 1% of the Red Angus breed. He is co-owned with Landrigan Livestock in Nebraska.



Dayton

Birth Date: 5/14/2016 **Reg #:** N/A **A2 Beta Casein:** A2/A2
Description: 80% Red Angus Cross
Frame: 3.5 **Price:** \$40/straw

Our Genetic Predictions

Calving Ease: ★★★★★ **Udder:** ★★★★★
Fleshing Ability: ★★★★★ **Disposition:** ★★★★★



PCC P-L Dayton 7902D

PCC Colorado High 4042P
Brun's Colorado High 117
5L Classy 295-5109
D&D Platinum 24Z
57% Red Angus Dam
62.5% Red Angus Dam

PCC Colorado Hobo
Beckton Angel CB82 JL
5L Turnpike 735-7507
5L Classy 833-295
Multi-Sire Red Angus
D&D Polled Lass X04
OH Grand Slam 228

Dayton is our "King of Fly Resistance" bull. This 20-Star bull is 80% Red Angus — with the diluter gene. When we evaluated this bull in August of 2017 in preparation for our Nebraska Bull Sale, he only had two or three horn flies. On a scale of 1 to 5, with 5 being the best, this bull was a 10 for fly resistance. Every year since then, Dayton has been nearly fly-free! His sons and daughters are also extremely fly resistant. Dayton is co-owned with Landrigan Livestock and Steve Schweitzer, both in Nebraska.

POLLED HEREFORD



Axel

Birth Date: 9/7/2013

EPDs: B. Wt. 2.4

Frame: 3.5 (est)

Reg #: 43509337

W. Wt. 52

A2 Beta Casein: A2/A2

Y. Wt. 73

Milk 22

Price: \$50/straw \$35/certificate

Our Genetic Predictions

Calving Ease: ★★

Udder: ★★★★★

Fleshing Ability: ★★★★★

Disposition: ★★★★★



Semen is available in Canada for \$54 (US) per straw.



PCC OH Axel 9516A

ALH 0407 Payne 0850

ALH 0850 Payne 1111

ALH 386 VIOLET 0940

HPH N-15 QT Plato R-30

OH Lucy R-30 0508X

OH VICKI LUCY 704T

ALH 0246 PAYNE 0407

ALH 0424 JANE 0608

PW 934 VICTOR 386

ALH 0343 VIOLET 0616

HPH 6007 CARLOS PLATO N-15

HPH 6007 QT SADIE M-21

ALH 034 PLATO DOM 0424

PPH AL'S PREDOM KEY VICK

Axel is the most impressive Hereford bull to go through the PCC program. He was purchased by a couple of seedstock producers in Canada — where he is leaving his mark. Axel has sired several top-sort bulls in the PCC program. He will add guts, volume and muscle to his offspring. He is the perfect baldy-maker. Axel is co-owned with Ozark Hills Genetics in Missouri, along with The 98 Ranch and Gemstone Cattle of Canada.

POLLED HEREFORD



Jackpot

Birth Date: 10/13/2021 **Reg #:** 44380302 **A2 Beta Casein:** A1/A1
EPDs: B. Wt. -1.5 **W. Wt.** 41 **Y. Wt.** 64 **Milk** 15
Frame: 4.5 (est) **Price:** \$30/straw \$35/certificate

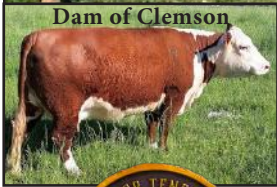
Our Genetic Predictions

Calving Ease: ★★★★★	Udder: ★★★★★
Fleshing Ability: ★★★★★	Disposition: ★★★★★

PCC Jackpot 9009J

PPH Domino Plato Rupert 2	NT Plato 19 209
PCC ACT Calvert 9374C	PPH Plato Victor 1
NDPH M180 U73 Z3	DPH BTF 13 M180
	DPH Grassie 4091 U73
BTF DPH Plato 167 5106 ET	NT Plato Rupert 167
NDPH 5106 T16 Z34	TRM Queen 8126
DPH Grassie 4091 T16	BTF DPH E132 4091
	DPH Vicky R275 H64

Jackpot was the leadoff Polled Hereford bull in our 2023 Texas Bull Sale. He was added to our AI Sire lineup to replace his sire as our calving-ease Hereford bull. Jackpot's birth weight EPD is in the top 5% of the Hereford breed. He goes back to Neal Trask breeding on both sides of his pedigree. Limited Semen Inventory.



Dam of Clemson



Clemson

Birth Date: 2/1/2015 **Reg #:** 43662827 **A2 Beta Casein:** A1/A2
EPDs: B. Wt. 0.6 **W. Wt.** 38 **Y. Wt.** 54 **Milk** 14
Frame: 4.0 (est) **Price:** \$40/straw \$35/certificate

Our Genetic Predictions

Calving Ease: ★★★	Udder: ★★★★★
Fleshing Ability: ★★★★★	Disposition: ★★★★★

Clemson 1129 Plato Y308 C310

NT Plato Rupert 4	NT Plato Rupert 0590
BTF 4 3119 ET	NT Ldy Boc Grove
NT Austina 338	NT Beau Blanch K5
	NT Plato Austina BR
BTF 252 6104	WPHF Victor 964 252
Clemson 252 6104 Y308	FHC 283 454 529
Edisto 167 Plato Rupert U318ET	NT Plato Rupert 167
	NT Trm Lady Advance J5

Clemson is a product of Clemson University's effort to preserve the Neil Trask gene pool. He is an intensely linebred bull that traces back 40+ times to NT Rupert (AHA # 9446404). Clemson's birth weight EPD is in the top 16% of the Hereford breed. Clemson has produced some beautiful, problem-free daughters. He is co-owned with Agape Cattle Company in Texas.

SOUTH POLL



Go Get 'Em

Birth Date: 3/28/2019

Reg #: 41659

A2 Beta Casein: A2/A2

Description: Red/Polled (100% South Poll)

Frame: 4 (est)

Price: \$40/straw

Our Genetic Predictions

Calving Ease: ★★★★★

Udder: ★★★★★

Fleshing Ability: ★★★★★

Disposition: ★★★★★★

Holiday 1123
OF Otium's Osceola
JL 869 4029 041411
PCC OH Go Get 'Em 8106G
BTF 4401 Dynamite 9401
VLCC 9401 5422 25
BTF 3422 2001 5422

BTF Bonafide 5447 9405
BTF 240 1572 4206
MT 416 Dandy 869
MT 4029
BTF 0446 M446 4401
BTF 5430 B0358
BTF 1742 1960 3422
BTF 6530 0891 TS 2001

South Poll is a relatively new composite breed that was created by Teddy Gentry. It has a locked-in breed combination of 25% Red Angus, 25% Polled Hereford, 25% Senepol and 25% Barzona. Although this breed is very heat tolerant, it will perform very well in more temperate climates. They grow hair when they need to. Go Get 'Em was the leadoff bull in our first-ever Alabama Bull Sale. He has a dog-gentle 5+ disposition. He also has 5+ grass efficiency, muscling and masculinity. He combines a 5-star hair coat with 4+ fly resistance. Go Get 'Em is co-owned with Bent Creek Farm in Virginia and Ozark Hills Genetics in Missouri.

SOUTH POLL



El Jefe

Birth Date: 8/23/2021 **Reg #:** 46709 **A2 Beta Casein:** A2/A2
Description: Red/Polled (100% South Poll)
Frame: 4 (est) **Price:** \$15/straw

Our Genetic Predictions

Calving Ease: ★★★★★	Udder: ★★★★★
Fleshing Ability: ★★★★★	Disposition: ★★★★★

PCC OH El Jefe 8170J

Holiday 9405 1307 1712 Holiday 1712 00513 1586 Holiday 00513 SVR RH60 1572 12410 ECC 12410 525 8019 ECC 97 307 525	BTF Bonafide 5447 9405 BTF 9513 MRS 1307 Holiday 869 9408 Romeo 0428 HH 1549 RH470 88 BTF 1542 Cassanova RH60 UGA 1512 1572 4213 MR. Stone House 7701 1710 907 ECC 778 055 307
---	---

El Jefe was the leadoff South Poll bull in our 2023 Texas Sale. He is out of a eight-year-old cow with a perfect udder. El Jefe has impressive 5-star ratings for masculinity, thickness, overall rating, hair coat and disposition. With a 63-pound birth weight and a birth weight ratio of 106%, we think he will prove to have very good calving ease. El Jefe is co-owned with Ozark Hills Genetics in Missouri.



Hiram

Birth Date: 9/24/2020 **Reg #:** 44451 **A2 Beta Casein:** Pending
Description: Red/Polled (100% South Poll)
Frame: 4.5 (est) **Price:** \$40/straw

Our Genetic Predictions

Calving Ease: ★★★	Udder: ★★★★★
Fleshing Ability: ★★★★★	Disposition: ★★★★★



PCC OH Hiram 8128H

JL 869 7410 F08 BTF F08 1412 Mr. Bojangles 542 BTF 8401 TS2011 1412 Holiday 1123 OF 1123 104 1315 HH 3652 RH470 104	MT 416 Dandy 869 BTF 4417 8437 7410 BTF 6416 6404 Broadway 8401 BTF TS2011 BTF Bonafide 5447 9405 BTF 240 1572 4206 BTF 1542 RH470 BTF 1973 0320 3652
--	--



Hiram sold in our 2022 Texas Sale. He has since been purchased back to be used as a PCC® herd sire. Hiram is our first South Poll AI sire that is Certified Tenet®. With a DNA score of 7.5 out of 10, we feel comfortable giving him 3-star calving ease. Hiram is a thick, easy-fleshing bull with tremendous masculinity. He is co-owned with Ozark Hills Genetics in Missouri.

COMPOSITE

Tarentaise Genetics

Tarentaise is a Continental breed that originated in the French Alps. They are noted for their fertility, milk production, meat-to-bone ratio and udder conformation. Compared to the British breeds, Tarentaise have a higher growth rate, higher milk production and produce a leaner carcass. Compared to most of the other Continental breeds, they excel in calving ease and fertility, while having a smaller mature size. Tarentaise is the most moderate-sized exotic breed that we know of. We no longer have many purebred Tarentaise. However, they continue to provide the foundation for many of our composite cattle.

Our Tarentaise Composite cattle were designed to provide the right genetic combination to fit our environment, as well as our production goals. They are 25 to 50 percent Tarentaise, 25 to 75 percent Red or Black Angus, and 0 to 25 percent Hereford. They can be red or black in color. Our Composite cows have the ability to wean our heaviest calves while holding their condition and rebreeding.

Why Composites? Crossbred cattle have always been much more efficient than straightbred cattle, but most crossbreeding systems are complicated and frustrating. They require too many breeding pastures, too many different breeds of bulls and too much time and management. Traditional crossbreeding also produces a lack of uniformity in calf size, cow size, muscling and milk production since several different breeds of bulls are used.

Composite bulls provide you with all the advantages of breed complementarity and hybrid vigor without all of the problems associated with the typical crossbreeding system. Instead of using several different breeds of bulls, you can use composite bulls to achieve the same results. You would not have to individually identify and sort cows into different breeding pastures to be bred by different breeds of bulls. In fact, you could run all of your cows in one herd with one set of composite bulls. This makes a rotational grazing system possible.



Colombo

Birth Date: 5/10/2015

A2 Beta Casein: A1/A2

Description: Red/Polled (50% Red Angus; 50% Tarentaise)

Frame: 4.0 (est)

Price: \$10/straw

Our Genetic Predictions

Calving Ease: ★★★★★

Udder: ★★★★★

Fleshing Ability: ★★★★★

Disposition: ★★★★★



PCC P-L Colombo 7914C

PCC Foster H140

PCC Colfax 7004R

Tarentaise Cow 414

PCC P-L Cash Man 5726U

Red Angus Cow Z12

Red Angus Cow 0113

Bluegrass Energizer

PCC Chanel E522

C-C Polled Coteau 64U

MCC Rebo B23

PCC OH Cash Crop 4429P

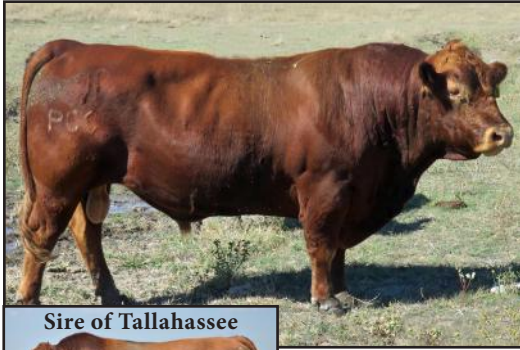
OH Ms Emulous Mm 522R

Red Angus Sire

Red Angus Dam

Colombo is a Colfax son. Colfax was the most impressive purebred Tarentaise bull to go through the PCC® program. Colombo is a high-marbling bull that has 4+ ratings for thickness, masculinity and overall rating. He has a 5-star hair coat. Colombo has a DNA calving ease score of 7 out of 10. He is co-owned with Landrigan Livestock in Nebraska.

COMPOSITE



Sire of Tallahassee

Tallahassee

Birth Date: 5/17/2012

A2 Beta Casein: A2/A2

Description: Red/Polled (50% Red Angus; 50% Tarentaise)

Frame: 4.5 (est)

Price: \$8/straw

Our Genetic Predictions

Calving Ease: ★★★

Udder: ★★★★★

Fleshing Ability: ★★★★★

Disposition: ★★★★★

PCC Tallahassee 7043Z

OCC No Doubt 622N

PCC Johnny B Good 4003R

PCC Sierra 539

Bluegrass Energizer

PCC Miss Candi M53

SBT B1N

PCC Colorado Hobo

OCC Vanessa 601L

BJR C-Chief 811

Beckton Sierra ZA30 RV

Bluegrass Black 8-Ball

SBT B1N

Hatfield Desert Extra

Tarentaise Cow 9316

Tallahassee is a Johnny B Good son out of an Energizer daughter that was in our herd until she was 13 years old. She was sold because her last calf died for unknown reasons prior to weaning. We don't keep cows in the PCC program unless they wean a calf every year. Tallahassee is co-owned with the CJ Schemper Farm in Kansas.



Elijah

Birth Date: 4/12/1999

A2 Beta Casein: A2/A2

Description: Black/Polled (50% Angus; 50% Tarentaise)

Frame: 3.0

Price: \$15/straw

Our Genetic Predictions

Calving Ease: ★★★★★

Udder: ★★★★★

Fleshing Ability: ★★★★★

Disposition: ★★★★★

MCC Elijah 934

OCC Anchor 771A

OCC Emancipate 889E

Dixie Erica of RR 4309

C-C Polled Coteau 64U

Tarentaise Dam

Tarentaise Dam

DHD Traveler 6807

OCC Juanada 709V

Shoshone Vantage JB23

Dixie Erica of RR 6124

Polled Coteau S210

0216 L64

Tarentaise Sire

Tarentaise Dam



Elijah was an extremely thick, easy-fleshing, heavy-musclled bull — in a 3-frame package. He has been used on well over 500 first-calf heifers with very few problems. It's very rare to find a bull this stout with so much calving ease. Elijah was still working in a PCC cooperative herd at 11 years of age. He is co-owned with Matney Cattle Company in Wyoming and Landrigan Livestock in Nebraska.

HEAT TOLERANT

Heat-Tolerant Genetics

Since 2015, we have been experimenting with several different breeds and breed combinations to come up with some excellent genetic solutions to heat stress. The one thing we want to minimize is the use of Brahman genetics. Although Brahman cattle excel in heat tolerance, they are too big and inefficient to fit our low-input program. Brahman and Brahman-cross cattle also lack fertility, which is the most important economic trait for cow-calf producers. Two more problems with Brahman-cross cattle are disposition and carcass quality.

For the most part, we are experimenting with Bos Taurus breeds of cattle that have Spanish and/or African origins. These include Mashona, Creollo, Romosinuano, Tuli and Senepol. Although we are working with some purebred tropical cattle, we much prefer to create composite breeds that are the result of using our thick, easy-fleshing, moderate-sized Red and Black Angus cattle as the base. The resulting composite cattle have a much more acceptable and marketable appearance.

Mashona is an indigenous breed from Africa. The breed originated with the Shona people in Zimbabwe. It was developed under natural selection without any external inputs for thousands of years in an extremely harsh and unforgiving environment. Mashona cattle have extremely low maintenance requirements. They are very fertile and easy fleshing. They are highly mobile grazers that have the ability to browse. They have early carcass maturity and finish well on grass. Mashona excel in hot and/or humid environments with low-quality forages. They work well on endophyte-infected fescue. They have a very high resistance to parasites and disease. Best of all, Mashona is a Bos Taurus breed.



Mufasa

Birth Date: 5/15/2015

A2 Beta Casein: Pending

Description: Black/Polled Purebred Mashona

Frame: N/A

Price: \$30/straw

Our Genetic Predictions

Calving Ease: ★★★★★

Udder: ★★★★★

Fleshing Ability: ★★★★★

Disposition: ★★★★★



Mufasa 493

When we first saw Mufasa, we fell in love with his phenotype. Most of all, we love the tremendous slope in his hips! We have sold our first set of sons out of this bull. He was called Mashona 493 until we named him Mufasa. Every great bull should have a great name. Mufasa has several daughters in production. So far, we love everything about him. We think he will have a huge impact in our quest to produce the best Heat-Tolerant Composites. Mufasa is co-owned with 5P Farms in Oklahoma.

HEAT TOLERANT



Zim Bob

Birth Date: 6/15/2015

Description: Red/Polled Purebred Mashona

Frame: 2.0 - 2.5

A2 Beta Casein: A1/A1

Price: \$40/straw

Our Genetic Predictions

Calving Ease: ★★★★★

Udder: ★★★★★

Fleshing Ability: ★★★★★

Disposition: ★★★★★★



Semen is available for export for \$52 (US) per straw.



Zim Bob 266

Many believe Zim Bob will prove to be the best Mashona bull in modern times. He is a favorite of Jaime Elizondo and Johann Zietsman. We are using Zim Bob heavily to produce some Heat-Tolerant Composite cattle. He is also being heavily used in Australia and Mexico. We sold 4000 units to a customer in Paraguay. We sold some semen to a Mashona breeder in Zimbabwe where the breed originated — to improve his genetics. Zim Bob is co-owned with Luis Valles of La Lagartija Cattle Company in Mexico.

HEAT TOLERANT

Tarzan



Diamond — Son of Tarzan



Tarzan M157

Birth Date: 3/15/2012

Description: Dark Red/Scurred (100% Mashona)

Frame: 3.5

A2 Beta Casein: A2/A2

Price: \$40/straw

Our Genetic Predictions

Calving Ease: ★★★★★

Udder: ★★★★★

Fleshing Ability: ★★★★★

Disposition: ★★★★★

Prior to Zim Bob, Tarzan was the most favored and heaviest used Mashona bull in the PCC program. We used him on our thick, easy-fleshing Red Angus cows. The results have been very impressive! Check out the picture of our Diamond bull. Tarzan does NOT have horns! Those are scurs; they are not attached to the scull. Tarzan is co-owned with D Bar 7 Ranch in Indiana and Walker Cattle Company in Missouri. Limited semen inventory.



Hondo

Birth Date: 3/18/2019

Description: Black/Polled (50% Mashona; 50% Red Angus)

Frame: 4.0 (est)

A2 Beta Casein: A2/A2

Price: \$15/straw

Our Genetic Predictions

Calving Ease: ★★★★★

Udder: ★★★★★

Fleshing Ability: ★★★★★

Disposition: ★★★★★

PCC R2R Hondo 8000G

PCC Security 4011S

PCC R2R Everett 4622D

R2R Rachel 874A

Multi-Sire Mashona

Katura

PCC Short Cut L05

PCC Colorado Dream P1052

RF 5-Star Gold 4550P

R2R Rachel 874R



Semen is available for export for \$27 (US) per straw.

Hondo is the result of breeding an extremely thick, easy-fleshing Red Angus bull to a black Mashona cow. Therefore, he is heterozygous black. He was the leadoff Black Composite bull in our 2020 Alabama Sale. Hondo has a very impressive 5+ rating for both hair coat and fly resistance! He is co-owned with the R2 Ranch in Texas and D Bar J Cattle in Missouri.

HEAT TOLERANT



He-Man

Birth Date: 4/22/2020

A2 Beta Casein: A2/A2

Description: Red/Polled (25% Mashona; 25% Romo; 50% Red Angus)

Frame: 4.0 (est)

Price: \$40/straw

Our Genetic Predictions

Calving Ease: ★★★★★

Udder: ★★★★★

Fleshing Ability: ★★★★★

Disposition: ★★★★★



PCC WCC He-Man 8626H

Tarzan M157

PCC WFF Diamond 7558D

SCCC Ms Emulous Spud 4015B

Garza Romo 650

WFF801F (Romosinuana/Red Angus Cross)

Red Angus Dam

Multi-Sire Mashona Sire

Mashona Dam

PCC REI Super Pud 5216W

WFF Ms Emulous LC 114Y

Romosinuana Sire

Romosinuana Dam

Red Angus Sire

Red Angus Dam

He-Man is a Diamond son out of a 50% Romosinuano cow. Therefore, he is 25% Mashona and 25% Romosinuano. The Romosinuano breed is a tropically-adapted Bos Taurus breed that originated in the Sinú valley of northern Colombia, South America. We really like this breed combination! He-Man has 5-star muscling, thickness, masculinity and fleshing ability. He is co-owned with Walker Cattle Company in Missouri and Beryl Landis in Georgia.



Generalissimo

Birth Date: 3/23/2019

A2 Beta Casein: A2/A2

Description: Red/Polled (50% Romosinuano; 50% Red Angus)

Frame: 4.5 (est)

Price: \$30/straw

Our Genetic Predictions

Calving Ease: ★★★★★

Udder: ★★★★★

Fleshing Ability: ★★★★★

Disposition: ★★★★★

PCC D-7 Generalissimo 7700G

PCC LLL Johnny Mizzou 5916W

PCC Jaw Dropper 4007D

PCC TB Weave 5048R

Panchico

Romosinuana Dam E353

Romosinuano Dam

PCC Johnny B Good 4003R

LLL Shorty's Blackbird 404

MH Magua 27

PCC Enamor 372

Romosinuana Sire

Romosinuana Dam

Romosinuana Sire

Romosinuana Dam

The Romosinuano breed is a tropically-adapted Bos Taurus breed that originated in the Sinú valley of northern Colombia, South America — near the equator. Generalissimo is the result of breeding a Romo cow to an extremely stout Johnny Mizzou son. Generalissimo has 5-star fleshing ability. He also combines a 5+ hair coat with 5+ fly resistance. He is co-owned with D Bar 7 Ranch in Indiana.

HEAT TOLERANT



Callado

Birth Date: 3/27/2019

A2 Beta Casein: A2/A2

Description: Red/Polled (50% Mashona; 50% Red Angus)

Frame: 4.0 (est)

Price: \$30/straw

Our Genetic Predictions

Calving Ease: ★★★★★

Udder: ★★★★★

Fleshing Ability: ★★★★★

Disposition: ★★★★★



Quieto (Red Mashona)

PCC R2R Callado 8010G

PCC Little Bear 4114X

OH Colorado Chunky 210

R2R Cedar 327B

Beckton Angel CB82 JL

TR Cedar NT327

PCC DC Meatball 5017X

TR Cedar NT327

Callado is a very impressive Quieto son out of a very thick, easy-fleshing Red Angus cow that goes back to our all-time favorite Angel cow. When evaluated prior to the 2020 Alabama Sale, Callado received impressive 5-star ratings for fleshing ability, muscling, thickness, masculinity, hair coat and overall rating. He is co-owned with the R2 Ranch in Texas and Landrigan Livestock in Nebraska.



Sire of Madera

Madera

Birth Date: 3/29/2024

A2 Beta Casein: A2/A2

Description: Red/Polled (50% Red Angus; 3/8 Mashona; 1/8 Romosinuano)

Frame: 4.0 - 4.5

Price: \$30/straw

Our Genetic Predictions

Calving Ease: ★★★★★

Udder: ★★★★★

Fleshing Ability: ★★★★★

Disposition: ★★★★★



PCC D-7 Madera 7704M

PCC BSR Banjo 4940E

OH Cash Crop 258Z

PCC D-7 Jayhawker 4701J

BSR Baroness B402

D-7 Reba G23

PCC OH Braken' Ahead 5606B

Tarzan M157

Lady Tarzan G54

D-7 Lakota E43

Quieto (Red Mashona)

D-7 Lakota A05

Madera is a Jayhawker son out of a Tarzan daughter. We have high hopes for this young bull! He has very impressive 5 and 5+ ratings for fleshing ability, masculinity, muscling, thickness, hair coat and fly resistance. Madera has a DNA calving ease score of 8.5 out of 10. He is co-owned with D Bar 7 Ranch in Indiana and 5P Farms in Oklahoma.

Now, more than ever... you need to produce low-input cows that fit your environment, instead of artificially changing your environment with expensive inputs to fit your high-input cows.

PHARO CATTLE COMPANY®
44017 COUNTY ROAD Z
CHEYENNE WELLS, CO 80810

Phone: 800-311-0995
Email: Kit@PharoCattle.com
Tyson@PharoCattle.com
Website: PharoCattle.com

ADDRESS SERVICE REQUESTED

PRSRT STD
US POSTAGE PAID
PERMIT NO. 28
Grand Island, NE



The Biggest and Best Selection of
Low-Input, Grass-Based Genetics
In the World