

# Galerie Betty Charles



BETTY CHARLES

# Autumn Collection 2025

## Selected Works



Suffolk House, High Street,

Yoxford, IP17 3EP

Tel: +44 (0) 7398 160650

[bureau@bettycharles.com](mailto:bureau@bettycharles.com)

[www.bettycharles.com](http://www.bettycharles.com)

Wednesday to Saturday 10am - 4pm

Other times by appointment



Galerie Betty Charles was established in 2025, by Lucy Charles. We present works from across Europe and the UK. We specialise in Modern art (1860-1960) whilst working with Contemporary artists whose work we respect and admire as “Modern-Masters”.

Within this brochure you will experience a small taste of what we have to offer our collectors, whatever your budget. We have had an exciting first few months since our doors opened in May, with three exhibitions. We have showcased some wonderfully established names such as Edward Seago, Ken Howard OBE RA and Lucien Pissarro alongside some very talented and newly discovered contemporary artists.

As a gallery, we thrive on celebrating the works of artists who truly deserve a spotlight or reappraisal or even a primary introduction if you are unfamiliar with their works in the British market.

We host a varied exhibition calendar throughout the year and we can be found at art fairs across the UK and in Europe. We also have regular invitation only exhibitions in London at our unique viewing gallery.



# Lucien Adrion

(French 1889-1953)



## **Côte Rocheuse à Lancieux**

Original Oil on Canvas

Signed lower right & titled on the back

Canvas size – 81 x 65 cm

£15,000



# Edward Seago

(British 1910-1974)

## Lady Rosemary Muir

(née Spencer Churchill)

Artist : Edward Seago

Oil on Canvas, 83 x 103 cm

£26,000



# Pierre-Marie Brisson

(French b.1955)



## **Calm III**

Technique Mixte,  
collage sur toile  
Canvas size - 39 x 47 cm  
£7,000



## **Monstera II**

Technique Mixte,  
collage sur toile  
Canvas size - 61 x 74 cm  
£9,000

# Pierre-Marie Brisson

(French b.1955)



## La Chapelle

Technique Mixte,  
collage sur toile

Canvas size - 92 x 74 cm

£18,000



# Geoffrey Chatten

(British 1938-2025)



## Seascape (1974)

Original Oil on Board

Signed lower right: Chatten

Canvas size – 15 x 11 cm

£1,250



## Evening by the Shore

Original Oil on Board

Signed lower right: Chatten

Canvas size – 16 x 10 cm

£1,250

# Geoffrey Chatten

(British 1938-2025)



## Country Landscape

Original Oil on Board

Signed lower right: Chatten

Canvas size – 61 x 46 cm

£3,950

# Geoffrey Chatten

(British 1938-2025)



## **Waverney Valley, Norfolk**

Original Oil on Board

Signed lower right: Chatten

Canvas size – 59 x 39 cm

£3,950



# Lucy Corbett

(British)



## Great Thurlow

Original Oil on Board  
Signed lower right: Corbett  
Canvas size - 28 x 18cm  
£895



## Oak Tree, Suffolk

Original Oil on Board  
Signed lower right: Corbett  
Canvas size - 28 x 18cm  
£895

# Lucy Corbett

(British)



## Wheatfields, Suffolk

Original Oil on Board  
Signed lower right: Corbett  
Canvas size - 28 x 18cm  
£895



## Gt. Wratting, Suffolk

Original Oil on Board  
Signed lower right: Corbett  
Canvas size - 28 x 22cm  
£925

# Lucy Corbett

(British)



## White Lilac & Melon

Original Oil on Board

Signed lower right: Corbett

Canvas size - 61 x 51 cm

£4,800



**Lucy Corbett**  
(British)



**Ranunculus**

Original Oil on Board  
Signed lower right: Corbett  
Canvas size - 40 x 45 cm  
£4,800

# William Davies

(Welsh 1928-2011)



## **The Grand Canal, Venice**

Original Oil on board

Signed lower left

Canvas size – 69 x 47.5 cm

£4,250

# Gabriel DesChamps

(French 1919 - 2011)



## Beaulieu sur Mer

Original Oil on Canvas

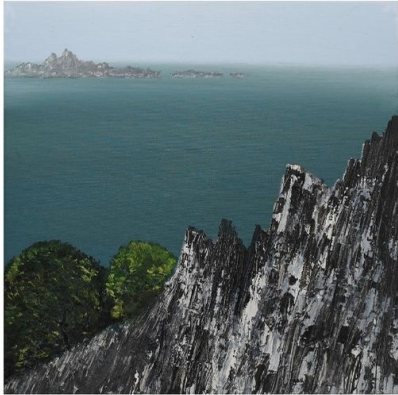
61 x 46 cm

£12,500



# Hilary Dymond

(British b.1953)

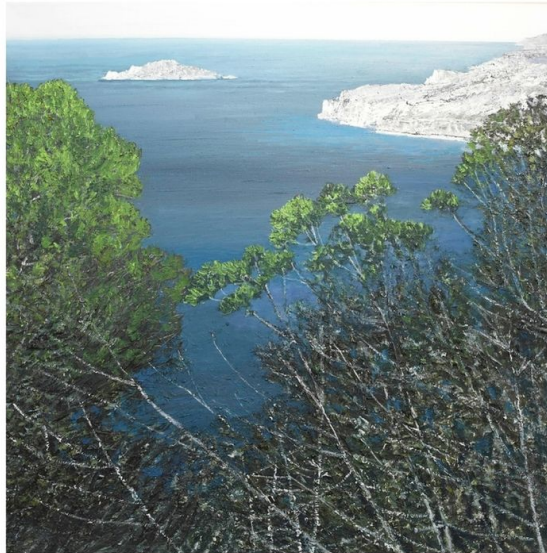


**Calanque I**

Oil on Canvas

Canvas size - 40 x 40 cm

£2,750

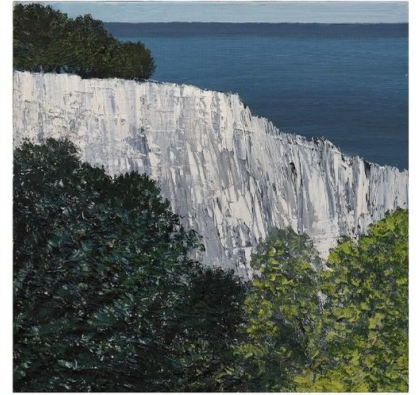


**Calanque III**

Oil on Canvas

Canvas size - 80 x 80 cm

£5,250



**Calanque II**

Oil on Canvas

Canvas size - 40 x 40 cm

£2,750

# Julien Gustave Gagliardini

(French 1846-1927)



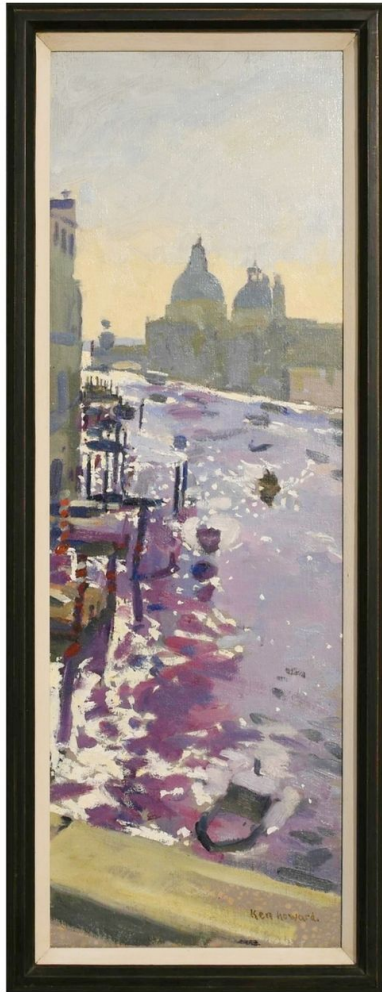
## **L'étang de Bere**

Original Oil on Canvas

Signed lower right: Gagliardini

Canvas size – 73 x 54 cm

£9,750



# **Ken Howard OBE RA**

(British 1932-2022)

## **The Grand Canal, Venice**

Original Oil on Canvas

Signed lower left: Ken Howard

Canvas size – 21 x 60 cm

£6,750



**Ken Howard OBE RA**  
(British 1932-2022)



**Ria dei Mendicanti, Venice**

Original Oil on Board

Signed lower left: Ken Howard

Canvas size – 23 x 18 cm

£5,250

# Ken Howard OBE RA

(British 1932-2022)

## Santa Maria della Salute

Original Oil on Board

Signed lower left: Ken Howard

Canvas size – 16 x 22 cm

£5,250



# Peder Mønsted

(Danish 1859-1941)

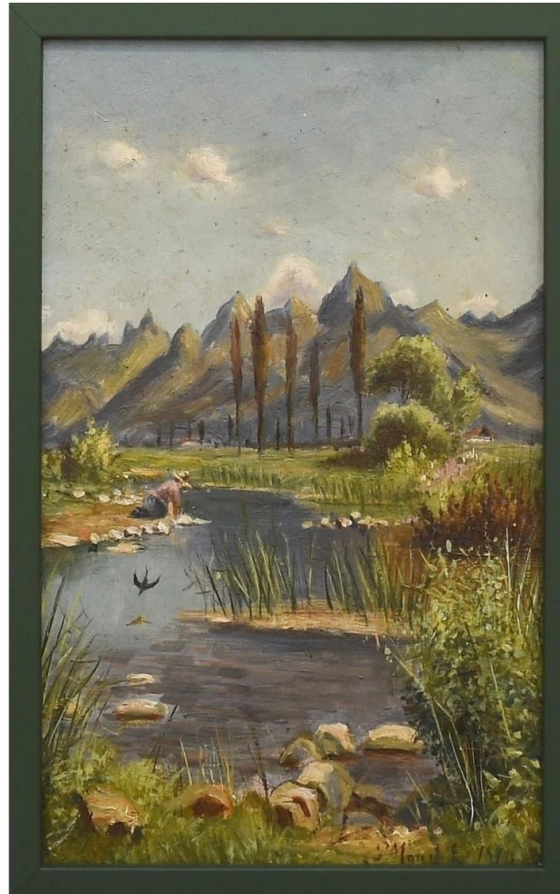
## Riverside with Mountain View

Original Oil on Board

Signed lower right: P. Mønsted 1890

Canvas size – 16 x 27 cm

£12,750





# Edmond Marie Petitjean

(French 1844-1925)



## **Rivière Tranquille**

Original Oil on Canvas

Signed lower left: Ed Petitjean

Canvas size – 69 x 48 cm

£9,750

# Lucien Pissarro

(British 1863-1944)

## Le Mont Verdaille, Cotignac

Original Oil on Canvas

Titled verso '*Le Mont Verdaille, Cotignac*' (on the stretcher)

Signed lower left: monogram '1934'

Canvas size – 46 x 55 cm

£58,000





# André Raffin

(French 1927-2005)

## Hommage de Peillon (1983)

Original Oil on Canvas

Signed lower left Raffin

Handwritten inscription on the back:

*D-27 Hommage à Peillon (sic Peille)*

*06440 - A Maryse Raffin*

Canvas size – 54 x 65 cm

£4,250





**Lars Swane**  
(Danish 1913-2002)



**Country Landscape**

Original Oil on Canvas  
Signed lower right: Lars Swane 66  
Canvas size – 40 x 26 cm  
£3,750

# Antoine Pierini

(French)



## Abres Repère

Hand blown glass, stainless steel  
& Carrara Marble  
£9,500



## Abres Repère

Hand blown glass, stainless steel  
& Carrara Marble  
£2,000



## Abres Repère

Hand blown glass, stainless steel  
& Spanish Emperor Dark Marble  
£1,800

# Antoine Pierini

(French)



**Colonne Roseaux**

**“Reeds”**

Mirrored glass & stainless steel

£15,500



## Lucy E. Charles

### Founder & Director

BA(Hons) MA, MLitt, RICS

**Lucy Charles** brings lengthy and in depth experience in the art market, specialising in modern and contemporary art. She is a RICS Associate Appraiser & Valuer and recognised in art market appraisal, advising both private and institutional clients on acquisitions, valuations, and collection management.

As a curator & art historian, Lucy previously produced exhibitions across Europe, preferring to work with smaller private Foundations & Collections, often advising clients on acquisition of works to build interesting permanent collections. She breathes fresh life into the gallery, juxtaposing Modern pictures with more contemporary pieces. She has a passion for working with artists who are in mid-career and established and have honed their skills as an artist. Lucy is excited by rediscovery of “unfortunately lost” Modern works, previously overlooked and in need of reappraisal.



## Oliver P. Charles

### Director

BSc (Hons) MA, M.Phil,  
SFHEA, FRSA Solicitor

**Oliver Charles** is an English Solicitor and art market specialist. Uniquely Galerie Betty Charles has a dedicated in-house Art Law team. Oliver also holds an M.Phil concerning the money laundering regulation imposed on the art market. He is a member of the Institute of Art and Law (IAL) and also the Association of Certified Fraud Examiners. He has lectured extensively in art history and art fraud.

Oliver is published in the areas of deferred prosecution agreements and money laundering. He has worked on a number of cases involving high value assets. These cases have ranged from assisting with the acquisition of such assets, through to complex title issues and recovery in the event of fraud. Oliver has been in general legal practice for almost 30 years. He acts for clients not only in the UK but offshore and residing abroad.



CONSULTANT JURIDIQUE | INTERNATIONAL  
LEGAL & TAX CONSULTANTS & ART MARKET SPECIALISTS

**Consultant Juridique International Ltd** was founded by Oliver & Lucy Charles in 2021. Together, Lucy & Oliver have over sixty years of experience and can call on an enviable list of trusted Associates and Experts should they need extra or specific skills.

It services the growing need for legal services within the Art Market. Art law is not a separate division of the law but the art market, museums and galleries have some specific needs which require the focus and expertise of art professionals and lawyers.

As a boutique legal consultancy, Consultant Juridique International offers clients a unique service with a high level of art market and historical knowledge alongside legal expertise.

We work with discretion to prevent speculation about your private finances. In 2025 the firm expanded to become a legal and tax consultancy covering UK and European clients.

## Client Services for Art Collectors

- We offer legal based and art market advice on long term collection strategy, cataloguing, condition reports and insurance to ensure investments are secure and protected. We can advise on the establishment of a foundation and link into philanthropy desires for your collection. We uniquely understand that collectors operate from a position of cultural heritage protection and custodianship.
- We are able to view works for you on your behalf at major auctions and provide our own condition report prior to purchase. We are also able to bid on your behalf ensuring ultimate discretion.
- We can offer an appraisal of your existing collection in entirety and specialist advice on deaccession and reinvestment in other works. We are specialists in discovering new works and emerging markets. By this we mean artists whose work which has been overlooked and looks set to rise having been unfairly neglected by the market.





GALERIE



B E T T Y C H A R L E S

Galerie Betty Charles  
Suffolk House  
High Street  
Yoxford  
Suffolk IP17 3EP

[www.bettycharles.com](http://www.bettycharles.com)

*All the images used in this catalogue that have been attributed are the property of Galerie Betty Charles and are protected by copyright and may not be reproduced, distributed, or displayed without the express written permission of the copyright holder*