

A photograph of a tram in Manchester city street, viewed through a semi-circular arch. The tram is yellow and white, with the number 30 visible on its front. The background shows modern glass skyscrapers and a historic brick building. The entire image is overlaid with a semi-transparent blue filter.

STAYCASA ACCOMMODATION

PRESENTS
YOUR EXCLUSIVE GUEST GUIDE

THE CITY OF MANCHESTER.

SEPTEMBER 2024

ISSUE NO. 01

WARM WELCOME TO MANCHESTER

Manchester has so much to offer, and we've curated a thorough list of recommendations for attractions, activities, and dining that we think you'll enjoy.

We've taken great care to anticipate and meet your needs before your arrival. If there's anything else you need, please feel free to reach out to us.

Thank you for choosing us to host your stay. We truly hope you have a wonderful time and consider staying with us again in the future.

The Staycasa Accommodation Team

Host Contact Information

MOBILE CALL: [\(+44\) 07933 034418](tel:+447933034418)

WHATSAPP MESSAGE: [\(+44\) 07933 034418](https://wa.me/447933034418)

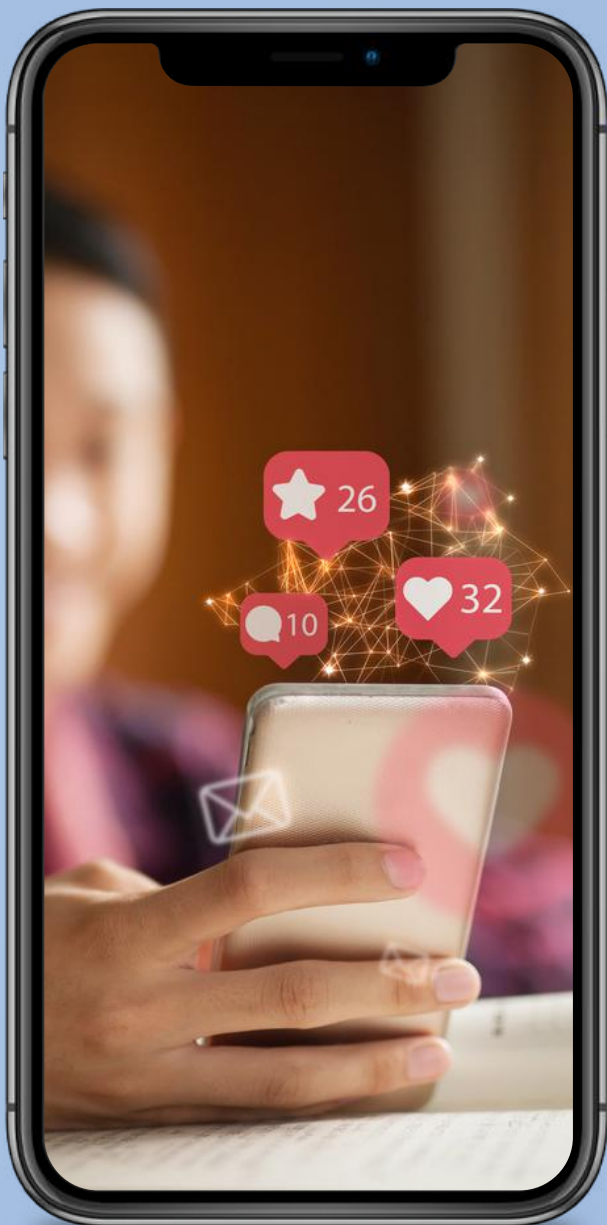
EMAIL: hello@staycasa.co.uk

WEBSITE: www.staycasa.co.uk

Stay.

STAY CONNECTED ON OUR SOCIALS

Share the highlights of your trip with us by tagging us using **#staycasanight**



Instagram
[@staycasasa](https://www.instagram.com/staycasasa)



Tiktok
[@staycasa.sa](https://www.tiktok.com/@staycasa.sa)



Facebook
[@staycasasa](https://www.facebook.com/staycasasa)

STAY AGAIN

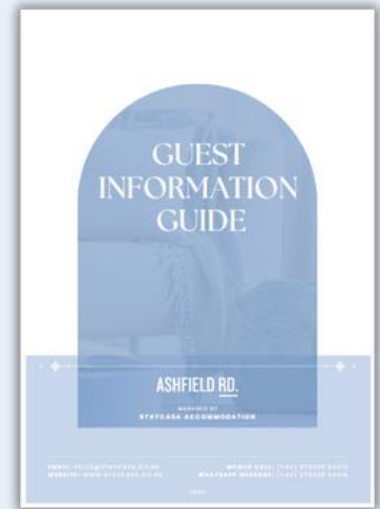
We'd love to host you again. Book directly with us on our website [**book.staycasa.co.uk**](https://book.staycasa.co.uk) and use the discount code **RETURN10** to get 10% off!

YOUR STAY

We have prepared a **GUEST INFORMATION GUIDE** at the property to help you settle in.

It contains everything you need to know for a smooth and pleasant stay at the property.

It's mounted around the entryway, look for it there!



CHECK-IN



Check-ins are standard at 3PM.

Early Check-in option possible, subject to availability. Check with Staff.

Detailed check-in instructions will be sent to you through your booking channel and/or your email 1 day before your arrival.

CHECK-OUT



Check-outs are standard at 11AM.

Late Check-out option possible, subject to availability. Check with Staff.

We ask you to please secure all doors and windows before your departure. Additional instructions and reminders will be sent through your booking channel and/or email before your departure.

Please kindly inform us via channel or text message letting us know that you have left. If we do not hear from you, we assume that you are out of the unit by 11AM and our cleaner will proceed with accessing the unit to start their work.

TRAVEL NECESSITIES

Travelling can be stressful, especially if you're in a new city/country. The following information will serve as a mini-guide to help you navigate around the city in search of some key necessities during your travels.

Use your browser to search the closest locations for:

Cash Withdrawal:

Safe and Free ATM



- Post Office UK
- **Large supermarkets** such as: ASDA, Tesco, Sainsbury, and M&S
- **Bank branches** such as Barclays, Natwest, and HSBC

Groceries:

Larger supermarkets with express stores



- **Large supermarkets** such as ASDA, Tesco, Sainsbury, and M&S
- **Express chains** such as Co-op food, Spar, Nisa Local, and Morrisons
- **Oriental Stores** such as Wing Yip, WH Lung, One Mart, and Blue Whale

Pharmacies:

Health, beauty, and medicine



- **Large chains** such as Boots, Superdrug, and ASDA Pharmacy
- **Independent Chemists** such as K's Chemist, Pharmacy 24, Cohens Chemist
- **Basic medicine** can also be purchased in small supermarkets and local convenient stores

EMERGENCY INFORMATION

In case of emergency, **Dial 999**

Police: For non-emergencies | Greater Manchester Police | **Dial 101**

Hospital: For non-emergencies | Manchester Royal infirmary | **Dial 111**

A collaboration between Staycasa and
Visitmanchester.com has brought to you,
THE ULTIMATE MANCHESTER HANDBOOK
with everything you need to explore the city and all
it's surroundings!




Staycasa.




Visit Manchester

The information on the following pages are extrapolations from the **Visit Manchester Insider's Handbook 2024** produced by visitmanchester.com. The information is formatted and shared by **Staycasa Serviced Accommodation** to it's guests for reference and leisure uses. All credits are rewarded to it's original author, and the source document can be found at: <https://www.visitmanchester.com>



TABLE OF CONTENTS

1. THE CITY OF MANCHESTER
2. NEIGHBOURHOODS IN MANCHESTER
3. ARTS, MUSEUMS AND HERITAGE
4. SPORTS
5. LGBTQ+
6. COFFEE, DINING AND RESTAURANTS
7. BARS, PUBS, AND BREWERIES
8. TOURS AND ACTIVITIES
9. SHOPPING
10. PARKS AND COUNTRYSIDE
11. GREATER MANCHESTER
12. TRAVELLING IN AND AROUND GREATER MANCHESTER
13. CENTRAL MANCHESTER MAP
14. GREATER MANCHESTER MAP
15. MAJOR EVENTS CALENDAR



Manchester

Energetic, diverse and individual, Manchester is a city with true character.

First finding global fame as the heart of the Industrial Revolution, Manchester has a proud history in science, politics, music, arts, and sport.

This is the city where the atom was first split, where the world's first passenger railway was opened, and where the modern computer was invented.

It's where bands like The Smiths, Oasis, Joy Division, and The Stone Roses were inspired to write music that moved the world.

It's the birthplace of modern vegetarianism, atomic theory, women's suffrage, and thermodynamics.

It's where Emmeline Pankhurst, Alan Turing, LS Lowry, and Anthony Burgess all called home.

Exploring Manchester city centre, you'll find it packed not only with remnants of this history but also with unique and independent restaurants, bars, shops, museums, galleries, and hotels, all gathered in neighbourhoods with their own distinct personalities.

Beyond Manchester, the surrounding nine boroughs of Greater Manchester offer some entirely different experiences including charming market towns, traditional country pubs, and beautiful green spaces and waterways.

All this doesn't scratch the surface of the modern Manchester experience. This city is what you make of it, so get out there, explore, and find the Manchester that speaks to you.

For more information see:
visitmanchester.com



Manchester



What's New



Manchester Museum

📍 mcrmuseum

Reopened in February 2023 following a £15m transformation, Manchester Museum has expanded with a two-storey extension, new exhibition hall, South Asia and Chinese Culture galleries, which join its much-loved dinosaur and Egyptology collections.

Mayfield Park

📍 mayfieldmanchester

The first new park to open in Manchester for 100 years, Mayfield Park spans 6.5 acres, offering 146 new trees, natural planting which supports fish and biodiversity, as well as an impressive children's play area. After your visit, stop by the adjacent Freight Island for a bite to eat.

Aviva Studios

📍 factory_international

Aviva Studios, home to Factory International, opened in October 2023 following a successful preview during the Manchester International Festival 2023. The colossal space will host new, cutting-edge work across art, theatre, live music, dance, and more.

Castlefield Viaduct

📍 ntcastlefieldviaduct

The National Trust has taken the first 330m of a long-abandoned Grade II-listed railway bridge to create Castlefield Viaduct, a new urban park reminiscent of New York's The High Line. Following an initial trial, the project has been extended, with intention to expand the park to up to 1km.

Northern Roots

📍 northernrootsoldham

With an ambition to be the UK's largest urban farm and eco project, Northern Roots is set on 160 acres of land just outside Oldham in Greater Manchester. Future plans for the site include a visitor centre with shop and café, outdoor swimming, beekeeping, cycle trails and a farm.

Rochdale Town Hall

📍 rochdaletownhall

A £16m restoration of one of Britain's finest civic buildings has now completed to allow the public to fully explore the building. The Grade I listed building opened in 1871 and symbolises the town's industrial standing in the textile trade.

Coming Soon



Manchester Town Hall

@ manchestertownhall

Manchester's impressive 19th Century Town Hall will reopen to the public in the next few years, following an extensive renovation project. Visitors will get access to previously unseen areas, including the Victorian police cells and clocktower with new guided tours on offer.

Co-op Live

@ thecooplive

Offering 32 bars, restaurants, and lounges across four levels, Co-op Live is set to open as a venue with a focus on live music and entertainment. The project, which is backed by Harry Styles, will host up to 120 live events a year, with capacity for 23,500 fans.

Therme Manchester

@ thermegroup

The UK's first city-based wellbeing resort, Therme Manchester will house a next generation waterpark, thermal bathing, and a wellness spa, when it opens next door to the Trafford Centre in the coming years.

Manchester City

@ mancify

Manchester City Football Club will increase capacity at the Etihad Stadium to 60,000 in the next three years, with plans to also add a sky bar with views overlooking the pitch, a stadium roof walk experience, and a 400-bedroom hotel.

Science and Industry Museum

@ scienceandindustrymuseum

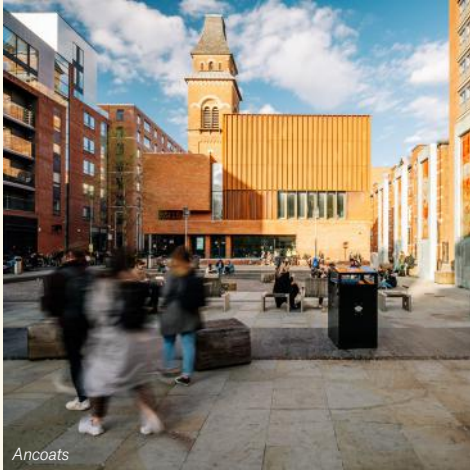
A multi-million-pound restoration programme is underway to carry out crucial restoration work on the Power Hall and 1830 Station and Warehouse, and for the first time in 100 years, the Grade I listed Station Agent's House will open as a truly unique accommodation option for up to eight people thanks to a partnership with the Landmark Trust.

John Rylands Library

@ thejohnrylands

The Grade-I listed library undergoing a one-year project that will transform its exhibition spaces. The library, now owned by the University of Manchester, is approaching its 125th anniversary in 2025.

Neighbourhoods



Ancoats

Ancoats

The world's first industrial suburb, Ancoats has slowly been rising, threatening to take the Northern Quarter's crown as the city's coolest neighbourhood. It features an impressive list of bars and restaurants.

Altrincham

A 20-minute tram ride from the city centre, Altrincham has an award-winning high street and is now a foodie hub thanks to spots such as Blanchflower, The Con Club, and the iconic Altrincham Market.

Castlefield

This is where the Roman's settled back in AD79 when they founded 'Mamucium'. Whilst the remnants of the fort can still be seen, this neighbourhood now makes for a picturesque walking spot along the canals.

Chorlton

In laid-back Chorlton, you'll find a medley of good pubs and bars, vegan delis, bakeries, and a strong foodie scene. Weekend strolls along Beech Road and around Chorlton Water Park make it difficult to leave.



Northern Quarter

Didsbury

Like Chorlton, the suburbs of Didsbury Village and West Didsbury have a hip, independent feel, full to the brim with restaurants, great shops and cafes, plus lush Fletcher Moss Park to explore.

Green Quarter

A growing pocket of green residential space that includes Angel Meadow Park, the Green Quarter is sowing seeds as a neighbourhood to watch with small businesses popping up under historic railway arches.

Levenshulme

Just one stop on the train out from Piccadilly station, Levenshulme has got plenty going on, from the community-run weekly market to the wonderful antiques village, plus plenty of good foodie spots.

Northern Quarter

The Northern Quarter is a hipster haven; a gritty area that's fiercely independent. It's overflowing with street art, galleries, cafés, bars, restaurants, boutiques and the unmissable Manchester Craft and Design Centre and Afflecks.

Neighbourhoods



Urmston

New Islington

Follow the canals into the marina and you'll find New Islington blending into its neighbour, Ancoats. Spend the morning wandering, watching wildlife, or devouring goods from the locals' favourite artisan bakery, Pollen.

Prestwich

This buzzing Bury town hosts independent and specialist retailers giving it a unique bohemian feel. You will also find plenty of green space including Prestwich Clough and nearby Heaton Park, Europe's largest municipal park.

Sale

A plethora of local stores, canal side pubs, and Waterside Arts Centre can be found in Sale. From the town, it's a short distance to Walkden Gardens or Sale Water Park.

Salford Quays

A unique waterfront location adjacent to MediaCity's tech and broadcasting hub, Salford Quays is home to the Lowry arts centre, the visually striking Imperial War Museum North, The Coronation Street Experience, and a cavernous food hall at Central Bay.



The Lowry, Salford Quays

Salford Central

The area of Salford that meets the western edge of Manchester city centre features great bars and restaurants along Chapel Street as well as masses of green space at Peel Park and The Meadow.

Stockport

A ten-minute train out of the city, Stockport is full of cool businesses, foodie hotspots and some unique attractions including 1930s art deco Stockport Plaza and Grade II listed 1460s Staircase House.

Stretford

With a major regeneration plan in place, Stretford has become one of Greater Manchester's most sought-after neighbourhoods and is home to Old Trafford Stadium. The Sunday Times lists it as one of the UK's coolest neighbourhoods.

Urmston

Having undergone revamp in recent years, Urmston is emerging as a strong alternative to Manchester's leafy southern suburbs, with lots of great coffee shops, pubs, bars, and restaurants opening across the town.

Museums

People's History Museum

@ phmmcr

Dedicated to telling the story of ordinary working people and ideas worth fighting for, it couldn't have a better home than Manchester, the birthplace of the trade union movement and universal suffrage.

Bolton Library and Museum

@ bolton_library_museum

Art, natural history, Egyptology, social history, archives, libraries, historic houses and an aquarium – there's something for everyone, all under one roof in Bolton.

Manchester Museum

@ mcrcmuseum

Boasting 4.5 million pieces in its archive, an impressive Egyptology collection, and discovery space, all in one neo-gothic, Grade II* listed building.

Science and Industry Museum

@ scienceandindustrymuseum

Based on the site of the oldest surviving passenger railway station, the museum showcases pioneering inventions and work that started in Manchester then changed the world.



Rochdale Pioneers Museum

@ coopheritage

Widely regarded as the home of the worldwide co-operative movement, this small museum is based within the site of the Rochdale Equitable Pioneers Society's first store which opened in 1844.

IWM North

@ imperialwarmuseums

IWM North is about people and their stories; how lives have been, and still are, shaped by war and conflict. The award-winning museum building is designed by international architect Daniel Libeskind.

Manchester Jewish Museum

@ mcrcjewishmuseum

Committed to using Jewish stories to connect to the world and society, the museum - which is housed inside a former synagogue built in 1873 - has recently doubled in size with a new gallery.

Museum of Transport

🐦 motgm

Telling the story of public road transport in Greater Manchester from its very beginnings in 1824 to the present day, featuring historic buses, coaches, trams, objects and displays inside a 1930s bus garage.



Galleries



The Whitworth

The Lowry

@ the_lowry

One of the region's top theatres and performance spaces, The Lowry is also home to the world's largest public collection of paintings and drawings by its namesake, the enigmatic LS Lowry.

The Whitworth

@ whitworthart

The city's flagship gallery is fully integrated into Whitworth Park; blending modern architecture, glass structures and stunning gallery spaces with original features from 1889.

Bury Art Museum

@ bury_art_museum

BAM houses the Wrigley Collection comprised of over 200 oil paintings, watercolours, prints and ceramics, whilst the adjoining Sculpture Centre features works by prominent contemporary sculptors.

esea contemporary

@ eseacontemporary

esea contemporary presents and platforms artists and art practices that identify with and are informed by East and Southeast Asian cultural backgrounds.

Castlefield Gallery

@ castlefieldgall

A lesser-known gem tucked away behind Deansgate Station, Castlefield Gallery has been a champion of Manchester's contemporary visual art landscape for over 35 years.

Manchester Art Gallery

@ mcrartgallery

Packed with much-loved displays of British and European art and design, including world-famous Pre-Raphaelite paintings, the gallery is for and of the people of Manchester.

Salford Museum & Art Gallery

@ salford_museum

This stunning Victorian building houses the biggest Pilkington collection in the UK, as well as a reconstructed Victorian street that transports you back to 19th-century Salford.

Gallery Oldham

@ galleryoldham

Gallery Oldham features exhibits from Oldham's diverse collections alongside newly commissioned art, international work, touring exhibitions and work produced with local communities.

Theatres



Royal Exchange Theatre

@ rxtheatre

Resembling a lunar spacecraft set down amidst a former Grade II listed trading hall, the Royal Exchange is the largest theatre in the round in the country.

Octagon Bolton

@ octagontheatre

Originally opened in 1967, one of the region's best-loved theatres, Octagon Bolton, has undergone a major refurbishment in recent years to make the theatre open to all.

HOME

@ homemcr

This arts complex is a marvel of contemporary design; a cultural hub for the city that encompasses theatre spaces, cinema, gallery, and restaurants.

Hope Mill Theatre

@ hopemilltheatre

Hope Mill Theatre has gradually become one of the most successful and reputable small producing venues in England with a string of five-star hit shows under its belt.



The Palace Theatre & Opera House

@ palaceandopera

Two separate theatres but very much siblings, the Palace and Opera House are amongst the city's oldest. Expect world premieres and hit musicals in these grandiose Victorian auditoriums.

Contact

@ contactmcr

Contact, the UK's leading youth arts organisation, features the country's first dedicated space for art, health and science, and hosts original works including at the LGBTQ+ festival, Queer Contact.

Z-arts

@ z.artsmcr

This incredible creative space based in Hulme is the UK's only arts centre focused on providing best practise in creative activities for children and young people.

Waterside

@ watersidearts_

Sitting in the heart of Sale, Waterside has built a strong reputation for delivering high-quality performance, live music, and high-profile visual arts exhibitions.

Music venues

AO Arena

📍 aoarena

AO Arena is one of the largest indoor arenas in Europe and has hosted some of the best names in entertainment such as Prince, Madonna, The Rolling Stones, and Manchester local Peter Kay.

New Century

📍 newcenturymcr

With its original sprung dance floor, disco ceiling and state-of-the-art sound system, New Century's rebirth brings a piece of the city's musical heritage to life for a new generation.

Band on the Wall

📍 bandonthewall

The city's oldest music venue and arguably the most eclectic, with a keen mission to promote equality and diversity through music, welcoming trailblazing artists from all over the world.

The Bridgewater Hall

📍 bridgewaterhall

Home of Manchester's renowned Hallé Orchestra as well as a performance base for distinguished ensembles, The Bridgewater Hall is Manchester's flagship international concert venue.

Albert Hall

📍 alberthallmcr

A Grade II listed former Wesleyan chapel, Albert Hall has been restored into a stunning purpose-built music hall, becoming one of the UK's most atmospheric venues.

The Stoller Hall

📍 stollerhall

A venue that has made a name for itself as an intimate space with incredible acoustics, The Stoller Hall is based underground within Chetham's School of Music.

Night and Day Café

📍 nightanddaycafe

A much-loved cornerstone of the Northern Quarter's vibrant music scene, Night and Day Café has been showcasing fresh musical talent daily since 1991 and is still going strong.

RNCM

📍 rncmlive

The Royal Northern College of Music is a leading UK music conservatoire. Home to over 900 students from more than 60 countries, it's a great spot to see emerging talent and visiting artists.



Albert Hall



The Bridgewater Hall

Libraries and Literature

Chetham's Library

@ chethamslibrary

Housed in a beautiful sandstone building dating from 1421, Chetham's has been in continuous use as a public library for over 350 years, making it one of the oldest libraries in the UK.

Manchester Central Library

@ manclib_archives

Central Library is known as both the city's study and its living room. Alongside an unrivalled hub of information and education, it's a great place to meet and socialise.

Elizabeth Gaskell's House

@ elizabeth_gaskells_house

Mrs Gaskell's former home helps visitors to discover secrets and insights into some of her most famous novels, and her friendships with peers such as Charlotte Brontë and Charles Dickens.

John Rylands Library

@ thejohnrylands

A masterpiece of Victorian Gothic architecture, it looks more like a church from the outside; however, inside you will be treated to one of the most spectacular library settings in the UK.

Anthony Burgess Foundation

@ misterenderby

The International Anthony Burgess Foundation is an educational charity which encourages public and scholarly interest in the life and work of Manchester's Anthony Burgess.

The Portico Library

@ porticolibrary

The third of Manchester's grand library trio (see Chetham's and John Rylands), The Portico opened in 1806 and holds a collection of books, archives, and illustrations spanning 450 years.



Chetham's Library

Manchester Poetry Library

@ mcrcpoetrylibrary

A new poetry research centre for Manchester – a UNESCO City of Literature – it holds an extensive collection of contemporary poetry from books to recordings, in multiple languages.

Working Class Movement Library

@ wcmlibrary

One of the most unusual libraries in the world, The Working Class Movement Library is a treasure trove with records of over 200 years of organising and campaigning by ordinary men and women.

Heritage sites

Victoria Baths

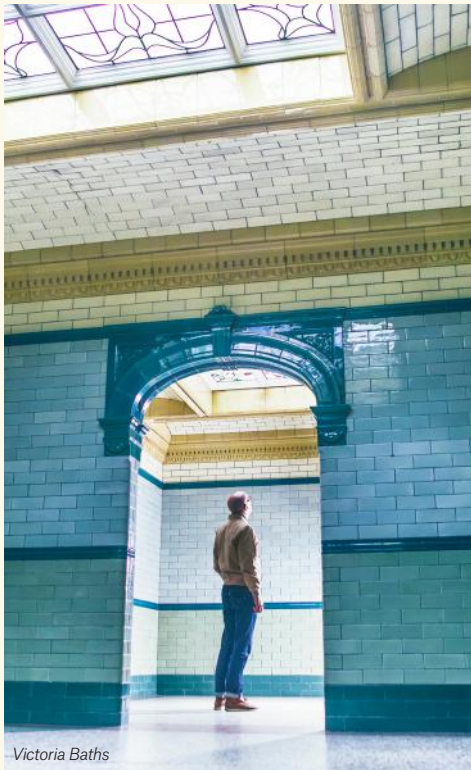
@ victoriabaths

No longer primarily functioning as a 'water palace' and Turkish baths, this Grade II listed building hosts regular events and features stunning stained glass, terracotta tiles and mosaic floors.

Manchester Town Hall

@ manchestertownhall

Designed by Alfred Waterhouse, Manchester Town Hall is one of the finest examples of Victorian Gothic architecture in the UK. Currently undergoing refurbishment, it will reopen in the coming years.



Victoria Baths

Manchester Cathedral

@ manchestercathedral

The Cathedral is an essential place to visit when in Manchester, featuring the finest late medieval woodwork in the North of England, alongside stunning modern stained glass.

The Monastery

@ themonasterymcr

Described as architect Edward Pugin's gothic masterpiece, the Grade II* listed Monastery was deconsecrated in 1989 and is now one of the most prized heritage sites in Greater Manchester.

The Pankhurst Centre

@ thepankhurst

The Pankhurst Centre is the restored Grade II listed former home of Emmeline Pankhurst and her daughters, dedicated to telling the story of women's fight for the right to vote.

Fireground

@ firegroundrochdale

A must-visit hidden gem for kids and adults alike, Fireground is a place to explore the history of fire, fire engineering, and the fire and rescue services in the Greater Manchester region.

Staircase House

🐦 SMBC_Museums

Staircase House is a Grade II* listed medieval building dating from around 1460 situated in Stockport and is famous for its rare Jacobean cage-newel staircase.

Salford Lads' Club

@ salford_ladsclub

Established in 1903 as a purpose-built club for boys, Salford Lads' Club has continued to provide this facility for over 100 years. It is also a must-visit spot for fans of The Smiths thanks to its use on the cover for *The Queen Is Dead*.

Sport



Manchester City Football Club Stadium Tour



National Football Museum

Manchester United Museum and Stadium Tour

@ manchesterunited

Take a behind-the-scenes look at one of the most iconic stadiums in sport. Sit in the managers seat, walk through the players tunnel, and find out why it's called 'The Theatre of Dreams'.

Manchester City Football Club Stadium and Club Tour

@ mancify

Experience one of the most immersive tours in football. Using the latest technology, dreams come true with a behind the scenes look at one of the most modern stadiums in sport.

Chill Factor®

@ chillfactor

Home to the UK's longest real snow slope, Chill Factor offers plenty of activities from sledging and sliding to group ski lessons and private tuition.

National Football Museum

@ nationalfootballmuseum

Delve into the social history and culture of the much-loved sport, with fascinating objects and special exhibitions that showcase how football became our national obsession.

National Cycling Centre

@ nationalcyclingcentre

The UK's first indoor Olympic cycling track and one of the world's fastest board tracks, the National Cycling Centre is open to athletes and novices alike.

Helly Hansen Watersports Centre

@ salfordwsc

Salford Quays watersports and outdoor activities centre is the place to go for windsurfing, wakeboarding, sailing, kayaking, canoeing and climbing.

Emirates Old Trafford

@ emiratesOT

The home of Lancashire County Cricket Club, Emirates Old Trafford is an integral part of the North West sporting scene, hosting international Test, One Day and T20 cricket matches.

Summit Up Climbing

@ summitupclimbing

Featuring Northern England's highest and largest Clip 'n Climb, as well as rope climbing and bouldering facilities, Summit Up offers something for every level of climber.

The Village

A beacon of celebration in the city, the Village is a welcoming community of bars, nightclubs, restaurants, and businesses open to all. Centred around Canal Street, you can expect to find a flourishing queer scene with entertainment on any night of the week.

Alternative queer clubbing

Whilst the Village is the undisputed centre of Manchester's LGBTQ+ life, a thriving alternative club scene occupies safe spaces at nights like Kiss Me Again, Bollox, Homoelectric, and female led What She Said, with events at venues such as Hidden, The White Hotel, Firehouse, The Carlton Club and Derby Brewery Arms.

Manchester Pride

Held every August Bank Holiday Weekend, Manchester Pride is a four-day celebration featuring a festival-style programme of music with further events in and around the Gay Village including the famous parade, Youth Pride, Superbia and the poignant candlelit vigils.



Greater Manchester Pride events

For an intimate way to celebrate pride season, the individual boroughs across Greater Manchester host fantastic community events. From Salford's The Pink Picnic held in Peel Park to events in towns like Bolton and Wigan. Manchester also hosts The Sparkle Weekend, the world's largest free-to-attend celebration of gender diversity.

LGBTQ+ art and culture

Contact theatre's Queer Contact and Hope Mill Theatre's Turn On Fest are just two annual festivals dedicated to LGBTQ+ arts and performance, whilst Sugar and Spice celebrates lesbian and bisexual women. A year-round programme at spots like HOME and 53two also feature plenty of queer culture.

Sport groups

As a major sporting city, it's no surprise there's a welcoming LGBTQ+ group for almost any sport you can think of. From the Village Manchester FC and Manchester Frontrunners, to the Village Spartan rugby club and GHAP badminton.

Queer history

Integral to the Campaign for Homosexual Equality in 1964, Manchester has always been at the centre of queer activism in the UK. You can follow the city's queer history on the LGBTQ+ Heritage Trail which takes in locations including the Alan Turing statue, and the National Transgender Memorial Garden. LGBTQ+ walking tours are operated by Free Manchester Tours most Saturdays.



What She Said Club

Coffee



Ancoats Coffee Co.

@ ancoatscoffeeco

Housed in a former cotton warehouse, the team at Ancoats Coffee Co roast their speciality coffee on-site and supply to countless bars, cafes, and restaurants across Greater Manchester.

Foundation Coffee

@ fdncoffee

With several locations around town, including spots on either side of The Village and in the Northern Quarter, Foundation boasts minimal design and the perfect setting for coffee enthusiasts.

ManCoCo

@ mancocoltd

The very definition of a hidden gem, this roastery and café is tucked away under the arches on Hewitt Street, near Castlefield Gallery, and hand roasts their coffee onsite.

Takk

@ takkmcr

Nordic-inspired Takk is a growing indy chain with several outposts that aim to provide a welcoming space to work, meet, talk, and dream up some big ideas.

Bold Street Coffee

@ boldstreetcoffee.mcr

An import courtesy of our neighbours in Liverpool, the award-winning Bold Street Coffee now has a branch on Cross Street in the city centre and at University Green off Oxford Road.

Grindsmith

@ grindsmithcoffee

One of Greater Manchester's leading purveyors of coffee, you can find Grindsmith at MediaCity – the perfect place to re-fuel whilst exploring The Quays.

Procaffeinated

@ procaffeinatedmcr

Situated on a rapidly changing stretch of Salford's Chapel Street, Procaffeinated combines speciality coffee with brunch options, homemade bread, natural wine, beer, and cocktails.

Federal Café & Bar

@ federalcafebar

A small independent chain run by a team who are passionate about great coffee and amazing brunch, Federal has been providing Manchester with a bit of antipodean café culture since 2014.

Brunch

Feel Good Club

@ visitfeelgoodclub

On a mission to create a space where people feel safe, comfortable, and feel good being themselves, Feel Good Club is a great spot for a casual brunch with friends in the Northern Quarter.

Ezra & Gil

@ ezraandgil

Loosely translated as 'helper of happiness', Ezra & Gil do exactly that through an appreciation for all things coffee and food, set within spaces with an industrial, stripped-back style.

Pot Kettle Black

@ pkbcoffee

With several branches popping up around town, Pot Kettle Black offers vibrant, easy-going food and some of the city's best coffee served in their now-famous red cups.

Trove

@ trove_foods

Trove now has sites in Levenshulme, Ancoats, and the central business district, with food made from scratch, by hand, with a focus on organic and locally sourced produce.

Evelyn's Cafe Bar

@ evelynscafebar

This shabby-chic bistro with a multitude of plants lining bare brick walls is a sure-fire win on Instagram. It's not only attractive to look at, but the food is outstanding as well.

Pollen Bakery

@ pollenbakery

Named by The Sunday Times as one of the 'best bakeries in the UK', Pollen Bakery undoubtedly has the best bread in the city, whilst their viennoiserie has people queuing out the door.

Gooley

@ gooeyco

Causing queues wherever they pop up, the guys at Gooley specialise in food – both sweet and savoury – bursting with sticky, messy flavours that you won't find anywhere else.

Green Lab

@ thegreenlabnq

A healthy option for earlier risers, this sustainable salad bar, juice bar and health studio is the place to go for a hearty breakfast or brunch to start your day right.



Gooley

Restaurants

Peter Street Kitchen

@ peterstreetkitchen

Exquisitely presented and beautifully balanced, Peter Street Kitchen explores fine Japanese cuisine matched with the heat and zing of contemporary Mexican dishes.

Mana

@ restaurant.mana

Manchester's first Michelin star restaurant since 1977, it serves a multiple course menu that champions British produce whilst taking inspiration from other cultures.

Dishoom

@ dishoommcr

Inspired by Bombay's Irani café scene this award-winning Indian café group has become a firm Manchester favourite based at the stunning Manchester Hall.

The Refuge

@ therefugemcr

Housed in a beautifully tiled room within the Kimpton Clocktower hotel, Refuge offers a range of small and large plates perfect for sharing as well as an extensive drinks menu.



The Refuge

Fazenda

@ fazenda.group

From sipping cocktails in the atmospheric bar, to enjoying the full rodizio experience, Fazenda is the perfect example of sophistication, where authenticity meets modern gaucho.

Hawksmoor

@ hawksmoormanchester

Located in a late Victorian courthouse on Deansgate, put simply Hawksmoor serves the best steaks in Manchester and have a wonderful reputation for service and attention to detail.

El Gato Negro

@ elgatonegromanc

Set in the style of an opulent Spanish townhouse, El Gato Negro takes the best of modern and traditional Spanish flavours, while drawing on ingredients from closer to home.

Kala

@ kala_bistro_manchester

From the team behind a raft of small bistros across the North West, Gary Usher's Kala offers humble British comfort food within a stunning space on King Street.

Sexy Fish

@ sexyfish_manchester

Following closely in the footsteps of its London counterpart, this show-stopping 150-cover restaurant features striking pink interiors, giant sculptures of creatures from under the sea, and opulent Asian-inspired menu.

Asha's

@ ashasmanchesteruk

Sharing a building with Forty Seven hotel, the award-winning restaurant and bar champions authentic Indian food and culinary innovation, driven by its namesake, the Bollywood singing legend, Asha Bhosle.

Restaurants

The Spärrows

@ sparrows_mcr

Here you'll find an intriguing combination of handmade dumplings, fresh egg pasta Spätzle, and other European classics, plus Japanese Sake. It shouldn't work but food critics love it.

Erst

@ erst_mcr

A beautifully simple natural wine bar and restaurant, Erst has established itself as one of the city's best neighbourhood dining and features in the National Restaurant Awards Top 100.

Climat

@ restaurantclimat

Newly opened Climat has a menu described simply as 'just food you want to eat', a cellar of 300 different wines, and a stunning roof top setting with vistas across the city.

Another Hand

@ another_hand_mcr

Tucked away on Deansgate Mews, this popular eatery now boasts inclusion in the prestigious Michelin Guide thanks to an array of sharing plates made with produce from ethical local growers.

10 Tib Lane

@ 10tiblane

Classic cocktails, natural wine, beer and seasonal food made with the best produce – the team at 10 Tib Lane have also garnered a reputation for one of the best Sunday Roasts in the city.

Three Little Words

@ threelittlewordsmcr

Nestled in the historical arches beneath Manchester Central, you'll find the home of Manchester Gin alongside elegant dishes designed to reflect the botanical nature of the brand.

MUSU

@ musumcr

Translating as "infinite possibilities", MUSU, brings something very different to the city and offers up both the pinnacle of fine dining and a totally immersive Japanese experience.

Exhibition

@ exhibition.mcr

Three award-winning kitchens come together at Exhibition to offer a combined menu influenced by Basque, British, Brazilian, and Scandinavian cuisine.

Higher Ground

@ highergroundmcr

Listed in the top 100 restaurants in the UK, Higher Ground is the brainchild of three restaurant pros combining incredible food, wine, and service, with organic produce grown on their farm in Cheshire.

Lucky Cat

@ lucky_cat_manchester

Housed in a Grade II listed former bank in the King Street district of the city, Gordon Ramsay has brought his fine-dining pan-Asian Lucky Cat restaurant to the city.



Exhibition

Casual dining



Porta Salford

📍 porta_salford

Located on Bexley Square, off Chapel Street in Salford, this award-winning casual tapas spot is 'inspired by the tiniest independent tapas bars of Barcelona and Madrid'.

Rudy's

📍 wearerudypizza

No Manchester casual dining list would be complete without a mention for Rudy's, the now iconic Neapolitan pizza joint – consistently ranked best pizza in the UK – that started in Ancoats.

Hip Hop Chip Shop

📍 thehiphopchipshop

Frying some of the best battered fish in town, the Hip Hop Chip Shop offers a no-nonsense traditional 'chippy' menu alongside some old school hip hop, a firm favourite amongst locals.

Diecast

📍 diecastmcr

Taking over a former metals factory, the first phase of 3,000-capacity Diecast focuses on great pizza, frozen daquiris, and incredible evening performances.



Nell's

📍 nellspizza

With sites in the Northern Quarter, Chorlton, and the garden neighbourhood Kampus, Nell's is quickly becoming a must-visit for any foodie.

Firehouse

📍 thefirehousemcr

Inspired by summers in California and Ibiza, Firehouse – sister restaurant to the Detroit-style pizzeria next door, Ramona – doubles up as a cabaret spot after dark.

Corn Exchange

📍 cornexchangemcr

Filling the stunning Grade II listed Edwardian Corn Exchange, twelve restaurants offer convenient dining under one glass-domed roof, just moments' walk from Manchester Arndale.

Maray

📍 marayrestaurants

Inspired by the middle eastern flavours of the Le Marais district of Paris, Maray dishes up show-stopping favourites such as Disco Cauliflower and Turkish Tea Margarita.

Food halls and street food

Mackie Mayor

@ mackiemayor

Re-imagined by the team behind Altrincham Market House, Mackie Mayor is filled with artisan food traders in the stunning surroundings of a former Victorian meat market.

GRUB

@ grubmcr

Run by local street food champions, GRUB is Manchester's biggest street food event, featuring local traders rotating on a weekly basis.

The Produce Hall

@ theproducehall

160 years of history have been preserved at Stockport's The Produce Hall, which has brought a selection of independent food and drink to the heart of the Old Town square.

Feast at the Mills

@ feastatthemills

Open every weekend within the iconic Eckersley Mill in Wigan, Feast at the Mills features a range of traders and a rotation of new, local live performers.

Freight Island

@ freightislandmcr

Taking residence adjacent to the former Mayfield station, Freight Island is a 600-seat indoor/outdoor venue, bringing live music and events alongside street-style food and drink.

Hello Oriental

@ hello_oriental_mcr

Hello Oriental boasts an Asian inspired bakery and cafe, Vietnamese restaurant, an oriental supermarket and a one of a kind foodhall offering street food from all over the Orient.

Kargo MKT at Central Bay

@ kargo.mkt

Located on the waterfront at Salford Quay, Central Bay is home to a microbrewery and gin distillery by Seven Bro7hers and a huge food hall boasting 20 independent kitchens.

New Century Kitchen

@ newcenturymcr

The trendy food space under New Century music venue has six vendors, with food ranging from posh butties to vegan Vietnamese to fill up on before a gig.



Vegetarian and vegan



Bundobust

@ bundobust

With venues on both Oxford Road and in Piccadilly Gardens, Bundobust serves up a winning combination of all-vegetarian Indian street food and a mighty selection of home brewed craft beer.

Wholesome Junkies

@ wholesomejunkies

Featured on Netflix and BB2's *Million Pound Menu*, this colourful vegan junk food spot is well worth seeking out, squirreled away in an archway near Victoria Station.

The Allotment Vegan Eatery

@ allotmentvegan

Offering a fresh and locally sourced menu of plant-based dishes, this award-winning restaurant also does a cracking Sunday Roast with all the trimmings.

Vegan Shack

@ veganshackuk

If you're a fan of fast food and want to try animal-friendly versions of all your usual favourites, this Piccadilly Gardens spot is the place to go to eat in or take away.

Otto Vegan Empire

@ otto_veganempire

After working the street food circuit for years, the 'Ottoman' team now has a bricks and mortars spot in Bramhall to serve up flavour-packed plates of Middle Eastern and Mediterranean food.

Ortica

@ ortica_italianplantbased

Greater Manchester's first fully plant-based Italian restaurant – located in Urmston – is a family run affair offering pasta, pinsa, and cocktails.

Greens

@ greensdidsbury

A Didsbury institution that's been going since 1990, it offers a fully vegetarian and vegan comfort food menu. A new spot is now also open in Sale's Stanley Square.

Vegetarian Society Cooking School

@ the_vegetarian_society

Get hands on as you chop, slice, dice and knead your way to delicious veggie and vegan dishes, taught by experts in veggie food at the Vegetarian Society's Altrincham cookery school.

Afternoon tea and sweet spots

Richmond Tea Rooms

@ richmondtearooms

Set over two floors, this enchanting 'Alice in Wonderland' themed dining experience in the Village is everything you want from an afternoon tea spot and perfect for group celebrations.

Siop Shop

@ siopshop

Tucked away in the back streets of the Northern Quarter, Siop Shop is famous for doughnuts, as well as cakes, pancakes, brunch food and great coffee.

The Library at The Edwardian

@ edwardianmanchester

The Library joins 5-star The Edwardian hotel to create an interpretation of the afternoon tea, featuring handcrafted savoury and sweet treats served in the intimate library setting.

Black Milk

@ blackmilkcereal

Black Milk started life as Manchester's premier cereal and milk café and has evolved into one of the city's best spots for desserts – shakes, brownies, cookies, cakes; you name it.

Ginger's Comfort Emporium

@ gingerscomfort

As well as their 'ice cream van for grown-ups' which tours food festivals and markets around Manchester, Ginger's also have a permanent shop in Afflecks to sample their delicious ice creams.

The Tea Room at The Midland

@ themidlandmanchester

Offering traditional afternoon tea since 1903, The Tea Room at The Midland hotel is a sophisticated affair with delicious cakes, scones, and sandwiches, served alongside an in-house tea blend.

Lazy Sundae

@ lazysundaeuk

Made popular by social-savvy visitors, Lazy Sundae serves up treats including travel-inspired ice cream, souffle pancakes, and bubble tea from its photogenic spot in the Northern Quarter.

Slattery

@ slattery_cakes

Nestled between Manchester and Bury, and a short ride out of the city, you'll find Slattery's three-floor bakery, patisserie, and chocolate shop which has been a local favourite since 1967.

Fluffy Fluffy

@ fluffyfluffyuk

Fluffy Fluffy serves up soft and bouncy Japanese soufflé pancakes and other desserts at their outpost on Whitworth Street.



Bars

Albert's Schloss

@ albertsschloss

Likely the city's most lively bar, the lines can be long, but once inside you'll be treated to an eclectic Bavarian space clad in wood with great drinks and off-the-wall live performances.

The Jane Eyre

@ thejaneeyremcr

Run by two brothers, at this Ancoats bolthole you'll find cocktail classics and simple food that puts an emphasis on quality ingredients. A new Chorlton branch has recently opened.

Blinker

@ blinkerbar

Named after a long-forgotten classic cocktail, Blinker – now listed as one of the Top 50 Cocktail Bars in the country – is the perfect place to while away an afternoon in the city centre.

20 Stories

@ 20storiesmcr

High above the city in Spinningfields, this prestigious rooftop bar and restaurant has become a regular haunt for Manchester's movers and shakers and is the ultimate special date location.

Red Light

@ redlightmcr

Adjacent to Manchester's famous LGBTQ+ Canal Street, Red Light is an LGBTQ+ friendly cocktail bar set inside a Victorian warehouse offering exposed brick and cosy corners.

Ducie Street Warehouse

@ duciestreet

A hotspot for remote working, Ducie Street Warehouse also has a stunning bar space for relaxed drinks before catching a movie in the mini cinema, or a train from adjacent Piccadilly station.

YES

@ yes_mcr

Sprawled across a four-floor warehouse, this indie music venue is one of the best spots to kick back and listen to great music – live or otherwise. The rooftop bar area is a summer favourite.

Speak in Code

@ speak_in_code

Manchester's not short of tiny cocktail bars hidden in plain sight, but Speak in Code is one of the best, garnering awards for their forward thinking, sustainably focused cocktails.

Schofield's

@ schofields.bar

Channelling an era of grand, luxurious bars with meticulous attention to detail, the award-winning Schofield's is one of several bars in the city run by bartender brothers Joe and Daniel.

The Daisy

@ thedaisynq

Set below Evelyn's Café Bar, this small and stylish bar is the perfect place to escape the crowds of the Northern Quarter with great cocktails and music.



Pubs



The Marble Arch

Britons Protection

@ thebritonsprotection

This Edwardian hostelry was known for signing up soldiers and has an impressive set of murals inside commemorating the Peterloo Massacre of 1819. It stocks over 300 whiskeys.

The Castle Hotel

@ thecastleman

Letting the good times roll since 1776, this iconic Northern Quarter pub and music venue is a great place to while away an afternoon.

The Flying Horse

@ flyerrochdale

Worth a train or tram ride to, The Flying Horse, next to Rochdale's iconic Town Hall, first opened in 1691, making it the oldest free house in the town and a top CAMRA rated spot.

The Kings Arms

@ kingssalford

One of the country's best back-street boozers, The Kings Arms is not just any pub – revellers can expect a year-round programme of live theatre, spoken word, music, comedy, and a resident cat!

The Marble Arch

@ themarblearchmcr

Built in 1888, The Marble Arch sits behind historic Angel Meadow Park, retaining original interiors including sloping mosaic floors and glazed tile ceiling. It is home to Marble microbrewery.

The Wharf

@ wharfpub

Overlooking Castlefield Basin, The Wharf brings a slice of country pub to the city. Dogs and their walkers are welcome to enjoy the scenic Canalside seating and the pub's seasonal menu.

Sadler's Cat

@ sadlerscatpub

Previously The Pilcrow Pub, which was built by volunteers, it now operates as Sadler's Cat by Cloudwater brewery, offering Scandi vibes and fantastic local beers.

The Circus Tavern

"The smallest bar in Europe, but the biggest welcome in the world" goes the saying at this tiny Portland Street institution which dates back to 1790.

The Molly House

@ themollyhousemanchester

The Molly House is a cosy bar and tapas restaurant nestled behind the Village's Canal Street. It's adorned with a mural featuring gay icons such as Alan Turning and Quentin Crisp.

The Peveril of the Peak

thepeveril

Arguably Manchester's most distinctive pub, this Grade II listed building dates back to the 1820s and has a gloriously tiled exterior, whilst inside the pub is cosy and unpretentious.

Breweries and taphouses



Track Brewery Taproom

Cloudwater Unit 9

@ cloudwaterunit9

Unit 9 is the award-winning Cloudwater's taproom. Situated next door to the brewery, the taproom includes 20 draft taps, barrel-aged beers, and cans and bottles to take-away.

Runaway Brewery

@ runawaybrewery

A microbrewery focused on small-batch beer, The Runaway Brewery offers tours and tastings at its working brewery in Stockport, alongside a taproom and shop.

Track Brewery Taproom

@ trackbrewingcotaproom

Located on an industrial estate behind Piccadilly Station (and opposite Cloudwater), the colourful Track Brewery Taproom features views of the brewing floor and a brilliant beer garden.

ÖL Brewery & Bar

@ olbrewerybar

A nano brewery located on Oxford Road, it features eight taps serving an ever-changing range of different styles including lagers, hazy pales, fruit sours and more.

Sureshot Brewing

@ sureshotbrewtap

Sureshot offers high quality, small batch hoppy IPAs, clean lagers, and flavourful, easy-drinking pale ales – all served out of a small railway arch behind Piccadilly Station.

Blackjack Brewing Co

@ blackjackbrewingco

With a brewery located near Angel Meadow park, just north of the city centre, Blackjack also have a free house pub, The Smithfield Tavern and several Jack in the Box market bars.

Seven Bro7hers

@ sevenbro7hers

Born out of seven actual brothers' love of beer, Seven Bro7hers operates four taphouses across Greater Manchester, as well as brewery tours at their manufacturing base near MediaCityUK.

North Brewing Co

@ northbrewco

The award-winning North Brewing Co was one of the first craft bars in the UK back in 1997 and have recently jumped across the Pennines from Leeds to set up at Circle Square.

Tours

City tours

There's no better way to find your feet in a city than on a professional walking tour. Manchester Guided Tours, Wiseguides, Free Manchester Walking Tours, and Free Walking Tour Manchester all run great introductory tours covering Manchester's history and heritage, whilst individual guides such as Emma Fox and Jonathan Schofield also run specialist tours on niche topics and in multiple languages.

Scranchester Tours

@ scranchestertours

Run by friendly local Rob Kelly, Scranchester Tours take you on a multi-stop food tour around the city, revealing fascinating facts about Manchester and England's food history.

Invisible Manchester

@ invisiblemanchester

All of Invisible City's experienced tour guides have been affected by homelessness. Often holding no punches, they offer their own personal insight into Manchester's past, present and future.

Manchester Taxi Tours

@ manchestertaxitours

For those wanting to cover a lot of ground in a short time, hail a taxi tour with John Consterdine. John's fun and flexible style allows you to visit anywhere based on your interests.

Skyliner Tours

@ skylinermcr

Join Hayley Flynn as she shares vast knowledge about the Northern Quarter, the area's best street art, gentrification, and lesser-known heritage sites that you won't find on other tours.

Craft Beer Tour Manchester

@ craftbeertourmcr

If you're into beer, you'll want to join Craft Beer Tour Manchester on their three-hour romp around one of the UK's best craft brewing cities.

The Locationist Film and TV Tour

@ thelocationisttour

Walk in the footsteps of your favourite actor or superhero and test your film knowledge with an expert guide as you discover Manchester locations used in film and TV.

Sightseeing Manchester

🐦 sightseeingmcr

This open-top bus tour takes you on a 90-minute loop, covering some of the Manchester, Salford, and Trafford's key sights, including the Science and Industry Museum, Old Trafford, and Salford Quays.

Manchester Wine Tours

@ manchesterwinetours

Join food and drink writer Kelly Bishop for a leisurely stroll around some of Manchester's best wine bars, restaurants, and shops, sampling great wines with matched snacks.

Rock and Goal Manchester

@ walking_tour_mcr

Whether you're visiting Manchester for its musical heritage or its footballing legacy, this walking tour with Joe Feeley will fill you in on all the juicy secrets the city has to share.



Manchester Taxi Tours

Activities



Food Sorcery

@ foodsorcery

Enjoy a fun-filled session of hands-on cooking led by expert chefs. Choose classes focused on your favourite world cuisine or hone in on a specific skill such as bread baking or spice blending.

Breakout Manchester

@ breakoutmanchester

You know the drill – you get locked in a room with friends, family or work colleagues for an hour and have to solve a series of puzzles, riddles, and tasks to escape.

Manchester Gin making

@ manchester_gin

Occupying an atmospheric space in the arches beneath Manchester Central, here you can learn the art of gin making with tastings and your own bottle to take home at the end.

MeetSpaceVR

@ meetspacevr

Team up to take down zombies or rogue drones at the world's first warehouse scale, multiplayer, free-roam virtual reality arcade right here in Greater Manchester.

Printworks

@ mcrprintworks

Having recently undergone a £22m refurbishment, Printworks is now to a range of restaurants, bars, interactive experiences, and a 23 screen Vue Cinema.

Treetop Adventure Golf

@ treetop_golf

Step into Manchester's lushest rainforest – located within the Printworks – where you can play 18-hole indoor mini golf against a backdrop of crumbling temples and raging waterfalls.

Whistlepunks Axe Throwing

@ whistlepunks

Unleash your inner Viking as you compete to hurl hatchets at wooden targets. Sessions start with a tutorial on how to sling an axe, before being let loose on a tournament.

Treasure Hunt Manchester

@ treasurehuntmcr

Discover Manchester in a completely different way. Solve satisfying clues and follow beautiful digital maps to unearth hidden historic treasures in the city.

Days Out



RHS Garden Bridgewater

East Lancashire Railway

@ eastlancsrly

A ride on the East Lancashire Railway offers glorious countryside, chocolate box villages, brilliant pubs, and plenty of fascinating history.

Chester Zoo

@ chesterzoo

The most visited zoo in the UK is just a 50-minute drive from Manchester and features 35,000 animals over 128 acres of zoological gardens.

Didsbury Bike Hire

@ didsburybicyclehire

A unique bicycle picnic offering, this Instagrammable experience uses Pashley Cycles with add-ons including afternoon tea, fresh flowers, and picnic hampers for all special occasions.

Jodrell Bank

@ jodrellbank

A UNESCO World Heritage Site just outside Manchester in Macclesfield, Jodrell Bank is a working deep-space observatory offering a planetarium show and interactive displays exploring space.

The Coronation Street Experience

@ coronationstreetexperience

Explore the famous cobbles of the world's longest-running TV soap, giving visitors exclusive access to the actual set and studios used on TV in this 90-minute tour at Salford's MediaCity.

Manchester River Cruises

🐦 Capt_Salt

Hop aboard for a return sightseeing trip to Salford Quays via the history packed Manchester Ship Canal, or experience the ultimate alternative to match day travel to Old Trafford.

RHS Garden Bridgewater

@ rhsbridgewater

The RHS's 154-acre garden, set within the lost historic grounds at Worsley New Hall in Salford, features one of the UK's biggest Walled Garden and lots of other beautiful spaces to enjoy.

Tatton Park

@ tattonpark

One of the UK's most complete historic estates, Tatton Park is home to a Tudor Old Hall, Neo-Classical Mansion, 50-acres of landscaped gardens, a heritage farm, and 1,000-acre deer park.

Independent Shopping



Manchester Craft and Design Centre

Pollard Yard

@ pollard_yard

Neighbouring Ancoats and New Islington, Pollard Yard is comprised of almost 100 former shipping containers now repurposed into small independent businesses, craft makers and arts spaces.

Manchester Craft and Design Centre

@ manchestercraft

Buy something handmade, personal, and bespoke at Manchester Craft and Design Centre. Explore two floors of contemporary studios within the unique surroundings of a Victorian market building.

Afflecks

@ afflecks_manchester

An Aladdin's cave of unique traders, offering an array of wonderful jewellery, clothing, and craft stores. You can spend hours getting lost in the labyrinth of treasures at Afflecks.

Old Town General Store

@ old_town_general_store

Having spent over 30 years in retail, working for prestigious stores, owner Tony Murray opened this renowned independent lifestyle store in the heart of Stockport Old Town.

The Royal Exchange

@ royalexchangemanchester

Located under and around the infamous theatre, The Royal Exchange offers everything from watches to whiskeys as well as international brands that you won't find anywhere else in the city such as Fjällräven and Søstrene Grene.

Fred Aldous

@ fredaldous

Helping the people of Manchester make and create for over 130 years, Fred Aldous stocks a comprehensive range of arts and crafts materials, plus haberdashery.

Rare Mags

@ rare_mags

Setting up shop alongside Stockport's growing independent scene, Rare Mags stocks a variety of hard-to-find niche magazines and books, perfect for collectors of design-led publications.

Form Lifestyle Store

@ formlifestylestore

Tucked away on a Northern Quarter side street, all of the pieces at Form have been carefully selected with a focus on design, function, and simplicity.

The Sculptps

@ thesculptps

Specialising in decorative homeware and lifestyle accessories, The Sculptps creates surreal yet soulful designs that pay homage to the industrial spirit, cultural icons, and creative hedonism of Manchester and its surrounds.

High Street shopping

Selfridges

@ theofficialselfridges

With two outposts – one at The Trafford Centre and a larger store in Exchange Square – shoppers can find designer brands alongside in-store personal shopping, beauty experts, and places to eat.

Manchester Arndale

@ manchesterarndale

The city centre's main shopping mall, Manchester Arndale is where you'll find a huge selection of high street names spread over two floors, plus a third-floor food court.

King Street

@ kingstreetmanchester

King Street offers a range of shopping and eating options, from the impressive Tudor-style Boodles, to refined brands such as Castle Fine Art, Vivienne Westwood, and Diesel.

Quayside MediaCityUK

@ quaysidemediacyuk

Formerly the Lowry Outlet Mall, Quayside MediaCityUK has 85 high street and designer stores offering up to 70% off, plus a 400 seat food court and seven screen cinema.

Harvey Nichols

@ harveynichols_manchester

The famous luxury department store is a Manchester icon, offering designer fashion and beauty as well as one of the city's best stocked food and wine halls.

Trafford Centre

@ thetraffordcentre

Known for its extravagant Rococo and Baroque design and high street favourites, Trafford Centre also features The Orient, Europe's largest food court. It truly is a shopping centre like no other.

Spinningfields

@ spinningfields

The city's commercial district, Spinningfields is a glass and steel collection of offices and big business, with high-end retailers such as Flannels along The Avenue.

Cheshire Oaks Designer Outlet

@ cheshireoaksdesigneroutlet

The UK's largest Designer Outlet, Cheshire Oaks is a 50-minute drive from Manchester, offering 140 heavily discounted stores and boutiques, alongside 19 restaurants and cafes.



Selfridges

Parks and countryside

Etherow Country Park

Covering the site of an old cotton mill, Etherow Country Park is home to over 100 species of birds and offers a haven for birdwatching, rambling, sailing, and angling.

Healey Dell

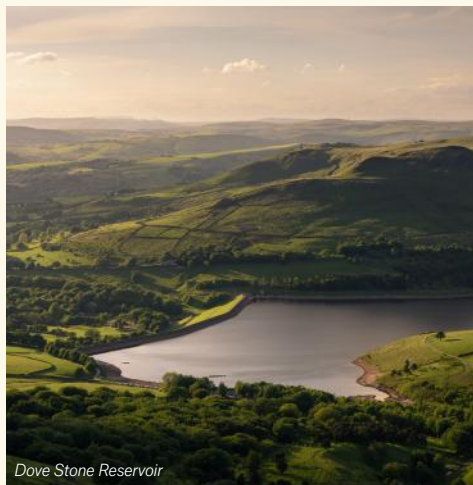
Take in the views from a 100-foot high disused 1800's railway viaduct or enjoy the wildlife sanctuary with delightful scenery and spectacular waterfalls just two miles from Rochdale town centre.

Burrs Country Park

Located just outside of Bury, Burrs Country Park is the ideal spot for riverside walks, fishing, and birdwatching. You can also follow the Irwell Sculpture Trail, which will lead you to the quaint town of Ramsbottom.

Werneth Low

Only 9.5 miles from the city centre, Werneth Low Country Park extends over 200 acres, providing panoramic views of Manchester, beyond to Liverpool, and on a clear day, the mountains of Wales.



Dove Stone Reservoir



Healey Dell

Peel Park

The first public park in the UK funded entirely by the people's subscription, Peel Park has been bringing Salford residents together since 1846. The neighbouring Meadows and Kersal Wetlands are excellent add-ons for walking and wildlife spotting.

Haigh Woodland Park

Set over 250 acres of parkland, Haigh Woodland Park is ideal for families – as well as beautiful scenery, the park offers mini-golf, a miniature railway, and aerial climbing activities.

Dove Stone Reservoir

Situated on the edge of Oldham and the Peak District, Dove Stone offers dramatic landscape surrounded by hills, with woodland walks and tracks surrounding the four main reservoirs.

Rivington Pike

Offering stunning views as far as the Isle of Man and Cumbrian Fells, Rivington Pike and its tower on Winter Hill can be seen from miles around and is a popular destination for walkers.

Historic Halls

Ordsall Hall

Dating back over 820 years, Ordsall Hall in Salford is a stunning Manor House with beautiful Tudor-style gardens. Legend has it the infamous Gunpowder Plot was conjured up here by Guy Fawkes.

Wythenshawe Hall

Following a devastating fire in 2016, the spectacular Wythenshawe Hall has been painstakingly restored to its former glory, ready to welcome a new generation of visitors.

Dunham Massey

This National Trust run Georgian house, a short journey from Altrincham town centre, features a garden for all seasons, an ancient deer park and 300 acres of beautiful parkland to explore.

Bramall Hall

The magnificent wall paintings, striking Elizabethan plaster ceiling, and Victorian Kitchens and Servants' Quarters give this timber-framed Tudor Manor House a unique charm.

Smithills Hall

One of Bolton's original family homes dating back to medieval times, Smithills Hall is set in over 2,000 acres of grounds and gardens and is one of the best-preserved manor houses in the region.

Heaton Hall

The Grade I listed Heaton Hall houses staterooms and a rare Etruscan room. It is located in Heaton Park which offers plenty to do including an animal centre, Tram Museum, large boating lake, and horse riding.

Lyme Park

Located in Disley, just south of Stockport, Lyme Park consists of a mansion, gardens and deer park and was famously used in the 1995 BBC adaptation of *Pride and Prejudice*.

Chatsworth House

Located a short drive from Manchester, in the heart of the Peak District, Chatsworth features over 30 rooms to explore, including the magnificent Painted Hall as well as 105 acres of gardens.



Chatsworth House

Greater Manchester

Don't limit yourself to the city-centre. The region of Greater Manchester is comprised of ten boroughs, including Manchester, each packed with everything from quintessential English countryside and quiet post-industrial towns, to striking architecture and stirring cultural offerings. All boroughs are accessible by either tram, bus, train, or taxi.

Bolton

Considered one of England's friendliest towns, Bolton offers a fantastic calendar of events throughout the year including the brilliant Bolton Food Festival, as well as captivating museums and film-set streetscapes such as Le Mans Crescent.

Bury

Take a trip out to Bury and hop on a steam train along the East Lancashire Railway then wander the surrounding countryside. Visit a local brewery, check out the excellent Fusilier Museum or explore the famous Bury Markets.

Oldham

Oldham retains many features of its proud history as a powerhouse of the Industrial Revolution, as well as modern attractions such as Gallery Oldham. Nearby Dove Stone Reservoir, with its natural beauty, is a stunning gateway to the Peak District National Park.

Rochdale

Greater Manchester's greenest borough, Rochdale has an abundance of award-winning parks and open spaces such as Healey Dell. It's also the birthplace of the Co-operative movement and its magnificent town hall is one of the regions' greatest architectural gems.

Salford

With world-class entertainment, leisure and cultural facilities, Salford offers enough arts, sport, shopping and heritage to fill a week. Head to The Quays, a stunning waterfront destination for spectacular architecture, award-winning theatres, galleries and museums, outlet shopping, cruises, and sport. For postcard perfect snaps also check out Worsley Village and RHS Garden Bridgewater.



Bury Market, Bury



Oldham

Greater Manchester



Stockport

Discover an array of hidden treasures in Stockport, from bustling modern shopping areas to quaint cobbled streets as well as heritage attractions such as Stockport Air Raid Shelters, Bramall Hall, Staircase House, Stockport Plaza, and the iconic Hat Works Museum. In recent years Stockport has also become something of a foodie hub, home to experimental restaurant Where The Light Gets In.

Tameside

Tameside stretches eastward from Manchester to the fringes of the Peak District National Park. Its landscape encompasses urban centres like Portland Basin, moorland, and the spectacular vistas of Werneth Low Country Park.

Trafford

A borough of contrasts, where the urban, cultural and waterfront offer in the north meets the fashionable suburbs and picturesque countryside in the south. Trafford is home to Manchester United, Lancashire County Cricket Club, IWM North, Altrincham Market and Dunham Massey Hall and Gardens.

Wigan

Halfway between Manchester and Liverpool, Wigan is full of variety. As the home of Wigan Pier, it offers a fascinating slice of industrial heritage as well as sprawling country parks such as Haigh Hall, charming pubs, and a diverse events programme throughout the year.

Getting to Greater Manchester

Manchester is one of the best-connected and accessible cities in the UK, and because of its central location, it can provide a superb hub for your travels.

By Train

There are three main inter-city stations in the city centre: Piccadilly, Oxford Road, and Victoria. With direct rail services from across the country getting here is easy. Operators include: TransPennine Express, CrossCountry, East Midlands Railway, Northern, Transport for Wales, and Avanti West Coast.

Train journey times from:

London	2hrs 7mins
Edinburgh	3hrs 15mins
Birmingham	1hr 28mins

By Road

Manchester is well connected to the rest of the UK via excellent motorway links. The M60 ring road connects the city to motorways north, south, east, and west..

Car journey times from:

London	4hrs
Edinburgh	4hrs
Birmingham	1hr 45mins

By Coach/Bus

National Express provide services from all over the country into Manchester Central Coach Station on Chorlton Street in the heart of the city centre. Shudehill Interchange has services to destinations across the north of England and is also a base for Megabus and Flixbus nationwide services.

By Plane

Manchester Airport is the third-largest airport in the UK. Pre-Covid it handled 27 million passengers each year and was home to more than 70 airlines offering direct flights to Manchester from over 210 destinations worldwide. It is connected to the wider transport network via its own train and Metrolink tram stations as well as excellent road infrastructure.

Note: Manchester Airport has started work on the next major phase of its £1.3bn Transformation Programme, which will see construction of a new pier connecting to Terminal 2.



Getting Around Greater Manchester

Getting around the city-region and surrounding areas is easy once you're here thanks to the fleet of buses, trains, and trams. The compact nature of the city centre also makes walking easy and safe.

Journey Planning

The Bee Network is the new name of Greater Manchester's integrated transport system. The Bee Network website and app have a wealth of information and several journey planning tools to take the stress out of travelling by bus, tram, train, walking, and cycling.

[beenetwork.com](https://www.beenetwork.com)

Free Bus services

Within the city centre, Free Bus provides a free 'hop on, hop off' service linking all the main rail stations, shopping districts, and business areas. There are two Free Bus services which operate on circular routes.

[beenetwork.com/free-bus](https://www.beenetwork.com/free-bus)

Bus

Look out for the new fleet of yellow Bee Network yellow buses being rolled out over the coming years, alongside existing commercial services to help you to get out and about across Greater Manchester.

[beenetwork.com/bus](https://www.beenetwork.com/bus)

Metrolink

There are 99 stops on the Metrolink tram network, with lines connecting north, south, east, and west. Purchase a ticket from ticket machines or on the Bee Network app before boarding, or touch in using contactless smart readers – don't forget to touch out when you complete your journey using the same contactless device.

[beenetwork.com/tram](https://www.beenetwork.com/tram)

Trains

In addition to the inter-city links, the rail network connects you to the neighbouring towns and districts of Greater Manchester from the city centre's main stations.

[beenetwork.com/train](https://www.beenetwork.com/train)



Metrolink, Exchange Square

Cycling

The city's bike hire scheme utilises bright yellow pedal bikes and e-bikes that can be used within an expanding area covering parts of Manchester, Salford, and Trafford. Download the cycle hire app to find a Bee Network bike and start riding.

[beenetwork.com/cycling](https://www.beenetwork.com/cycling)

Manchester on foot

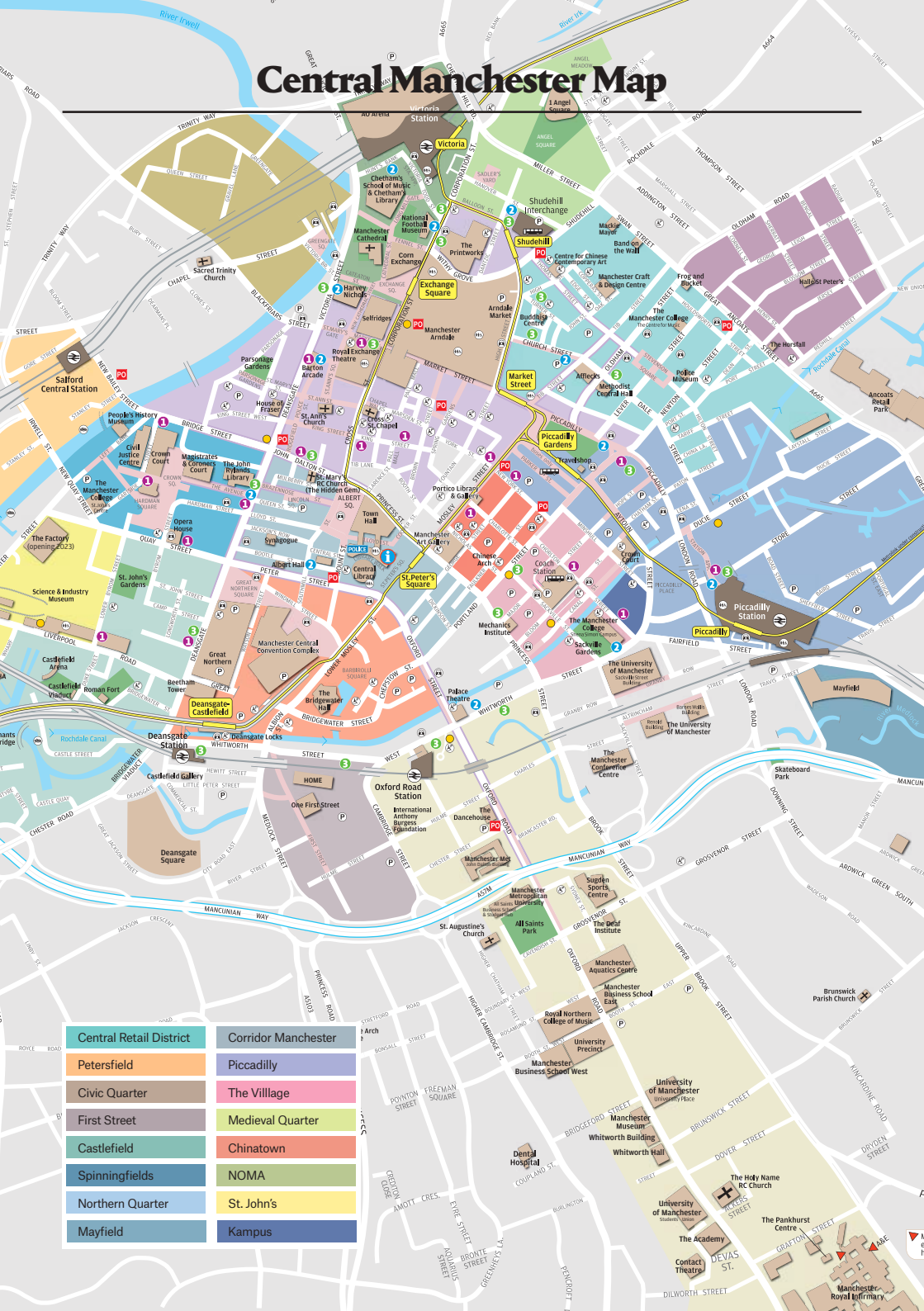
Manchester is easily explored on foot, with a city centre that you can navigate within 20 minutes. City Hosts are dotted around the centre to guide you with directions, public transport information, and details on events taking place.

[beenetwork.com/walking](https://www.beenetwork.com/walking)

Tourist Information

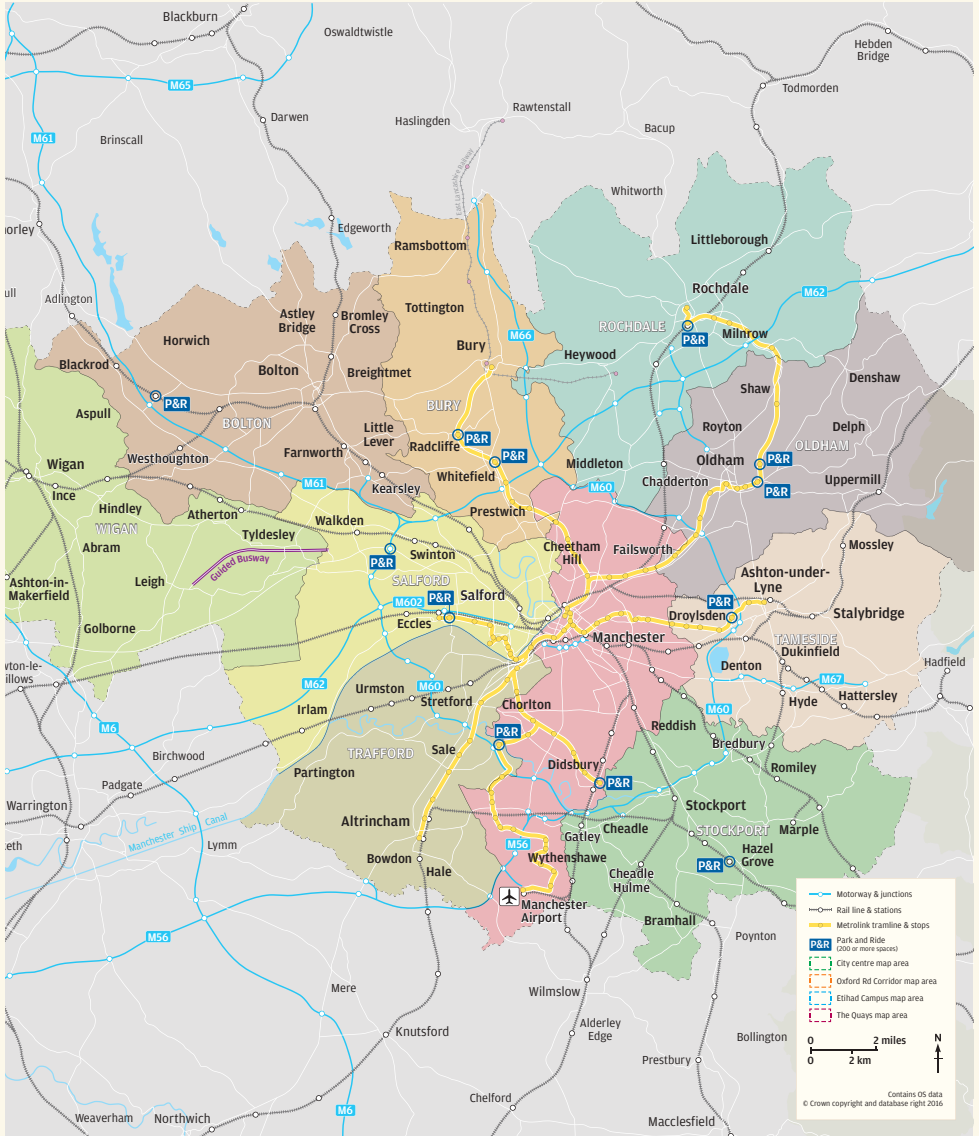
Manchester's Visitor Information Centre in Central Library can provide you with everything you need to get the most out of the city, including maps, visitor guides, hotel information and even discounted tickets for various attractions across the whole region.

Central Manchester Map



Central Retail District	Corridor Manchester
Petersfield	Piccadilly
Civic Quarter	The Village
First Street	Medieval Quarter
Castlefield	Chinatown
Spinningfields	NOMA
Northern Quarter	St. John's
Mayfield	Kampus

Greater Manchester Map



2024 major events calendar

January

HYROX Manchester 2024
GRUB Winter Beer Festival

February

Chinese New Year
Push Festival
International Mother Language Day
Queer Contact
World Table Tennis Feeder 2024

March

International Women's Day
Manchester Irish Festival
Northern Restaurant and Bar 2024

April

Co-Op Live opens
RHS Urban Show
Manchester Marathon
World Snooker Championship Tour

May

Manchester Jazz Festival
Great Manchester Run
Pride in Trafford
Sounds from the Other City
Manchester Flower Festival

June

Parklife Festival
Sounds of the City
The Pink Picnic, Salford

July

We Invented the Weekend
Manchester Day
Oldham Pride
Stockport Pride
Tameside Pride
RHS Tatton Flower Show
Greater Manchester Fringe

August

Manchester Pride
Wigan Pride
Manchester Caribbean Carnival
Festa Italiana Manchester
Bolton Food and Drink Festival

September

Bolton Pride
Bury Pride
Warehouse Project

October

Black History Month
WOMEX 2024
Halloween in the City
Manchester Literature Festival
Manchester Folk Festival
Warehouse Project
Indy Man Beer Con
Manchester Science Festival

November

Manchester Christmas Markets
Manchester Coffee Festival
Homobloc
Manchester Art Fair
Warehouse Project

December

Bolton Christmas Festival
Manchester Christmas Markets



Manchester Pride




Staycasa.

SERVICED ACCOMMODATIONS

Thank you for staying with us, we look forward to seeing you again!

Visit us again at www.staycasa.co.uk

Don't forget to leave us a 5 star review before you leave! ★★★★★

 Trustpilot

 Google

