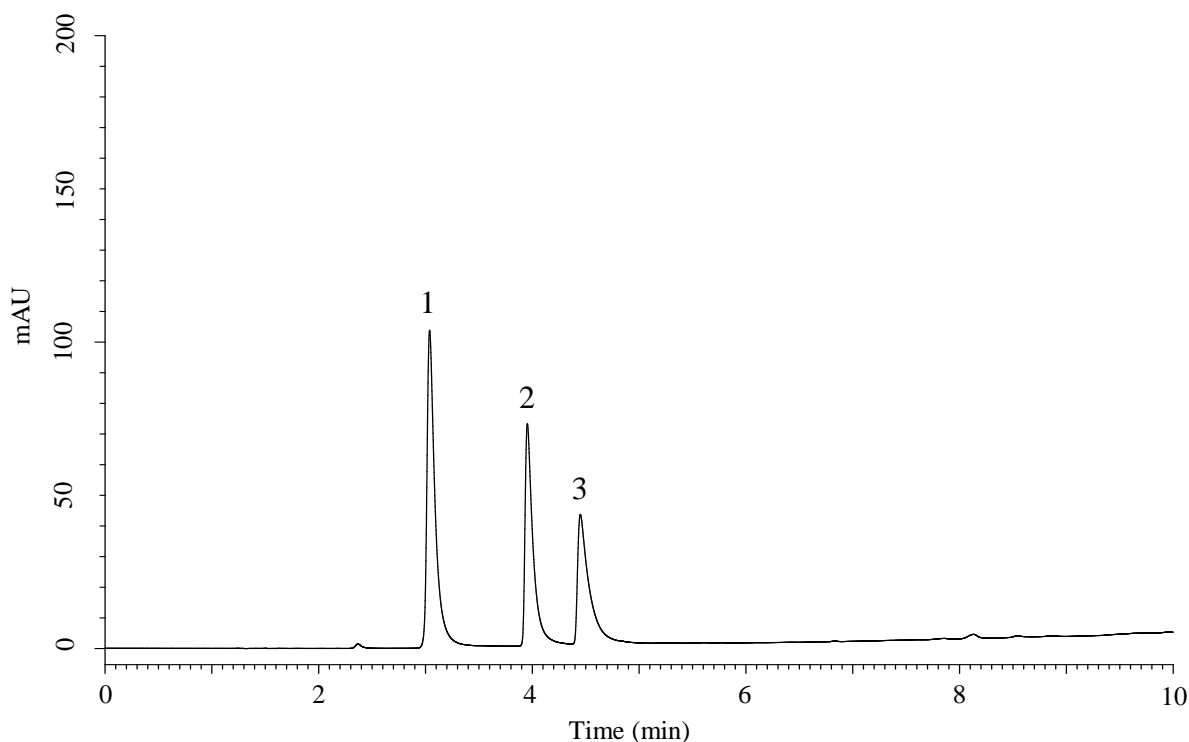


InertSearch for LC

Inertsil Applications

Analysis of CTP and its related compounds

Data No. LB781-0806



Conditions

Column : InertSustain AX-C18 (GL Sciences Inc.)
(3 μ m, 150 x 2.1 mm I.D., Metal-free hardware)

Column Cat. No. : 5020-91059

Eluent : A) 200 mM HCOONH₄ in CH₃OH
B) 10 mM HCOONH₄ in H₂O

Time (min)	A (vol%)	B (vol%)
0.0	2	98
10.0	80	20

Flow Rate : 0.3 mL/min

Col. Temp. : 40 °C

Detection : UV 254 nm

Injection Vol. : 1 μ L

Sample : Standard

Analyte:

1. Cytidine monophosphate (CMP)

2. Cytidine diphosphate (CDP)

3. Cytidine triphosphate (CTP)

(100 mg/L each)