

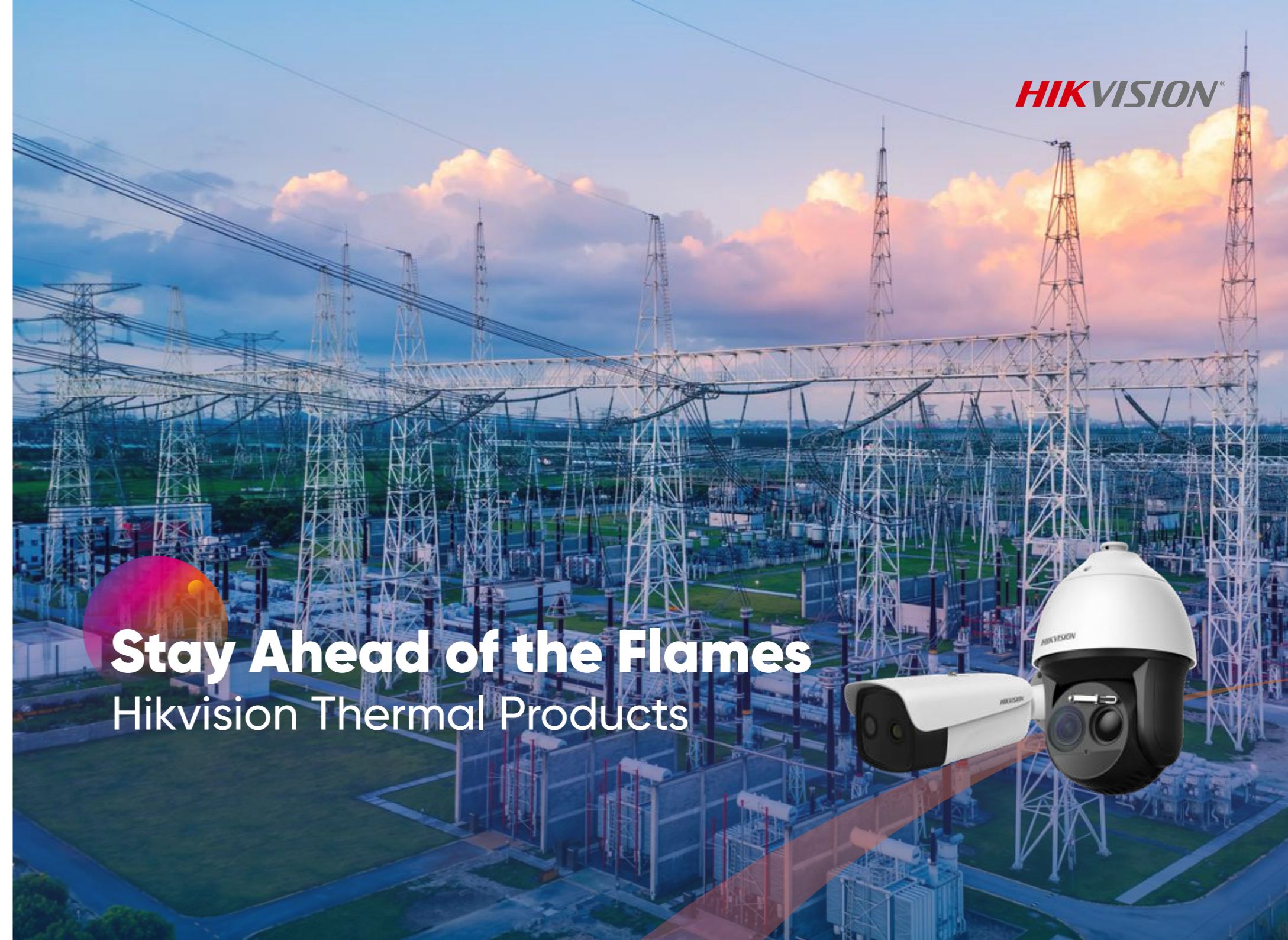
**Stay Ahead of the Flames**  
Hikvision Thermal Products



[www.hikvision.com](http://www.hikvision.com)  
[support@hikvision.com](mailto:support@hikvision.com)




**Stay Ahead of the Flames**  
Hikvision Thermal Products





# ABOUT HIKVISION

## Leading Provider of AIoT Products and Solutions

Hikvision is committed to serving various industries through its cutting-edge technologies of machine perception, artificial intelligence, and big data, leading the future of AIoT:

- 


Through comprehensive machine perception technologies, we aim to help people better connect with the world around them.
- 


With a wealth of intelligent products, we strive to identify diverse demands by delivering intelligence at your fingertips.
- 


Through innovative AIoT applications, we are dedicated to empowering every individual to enjoy a better future by building an intelligent world that is more convenient, efficient and secure.

## Dynamic Growth & Global Impact

### Dynamic Growth

- 

**\$ 12.68 B** Total revenue in 2023
- 

**28%** Compound annual growth rate from 2010 to 2023
- 

**58,000+** Employees worldwide

\*Based on the average exchange rate in 2023: USD 1 = RMB 7.0467

## Business Scope

### Core Business

<b>Public Service Business</b>	Smart city Urban governance	Intelligent traffic Public transport ...
<b>Enterprise Business</b>	Retail Logistics Energy	Education Healthcare Manufacturing ...
<b>SMB Business</b>	One-stop solutions with intelligent products, covering video security, access control, intercom, alarms, etc.	

### Global Coverage

- 


**4** Regions: Pan Asia Pacific, Pan Europe, Middle East and Africa, Americas
- 


**18** Regional logistics centers
- 


**80** Subsidiaries and branch offices outside the Chinese mainland
- 


**400+** After-sales service points


### 8 Innovative Businesses


- 


Smart Home
- 


Automotive Electronics
- 

Robotics
- 

Intelligent Storage
- 

Fire Security
- 

Infrared Sensing
- 

X-Ray Detection
- 

Medical Imaging

# SMALL-AREA FIRE PREVENTION



Warehouses



Data Centers



Factories



Battery Storage Factories



E-Charging Stations

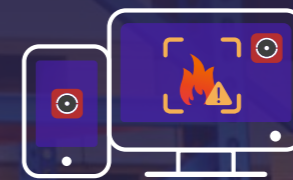
## Temperature Detection

Provides non-contact temperature measurement for fast and visible detection, so actions can be taken early enough to prevent a fire before the worst happens.



## Light & Audio Warning

Detects threats in a timely manner and triggers a strobe light with customizable audio alarms.



# HeatPro

# MEDIUM-AREA FIRE PREVENTION



## Forklift Filter

With the help of an AI algorithm, Hikvision thermography cameras recognize and ignore the heat from forklift engines to reduce unwanted alarms.

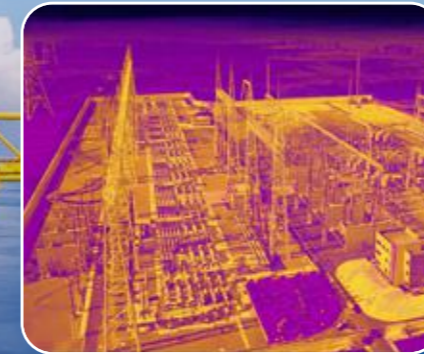


## Sun Reflection

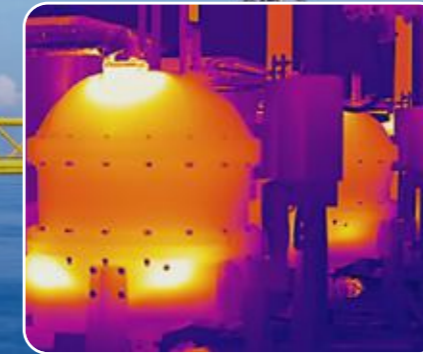
Our thermography cameras can analyze potential fire points. In the case of overexposure, the alarm will be filtered out.



## Industrial Scenarios



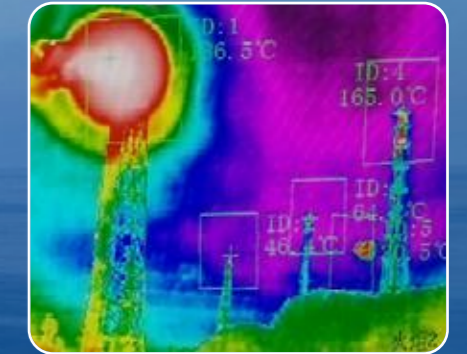
Electrical



Manufacturing



Waste & Recycling



Energy

# LARGE-AREA FIRE PREVENTION

Excellent for protection in natural areas, both public and private



## Wide Coverage

Hikvision thermal PT cameras cover vast areas with fewer installation points for maximum cost reduction.



## Stability

Since remote device replacement is difficult, Hikvision products are designed for maximum stability and durability.



## Accuracy

Our solution boosts low false alarm rates and timely, accurate detections to reduce potential losses.



## Timeliness

Our solution provides 24/7 monitoring and detects fires as early as possible, deploying patrol routes to shorten intervals.

### Thermal Channel: Fire Source Detection

Thermal fire source detection algorithms locate suspicious heat sources. They compare temperatures between a target and environment to detect differences against the set threshold.

### Optical Channel: Smoke Detection

Optical lenses in PTZ cameras deliver smoke detection as a supplement to thermal fire-source detection. Since smoke comes before fire, and fire may be covered by leaves or terrain, the smoke detection algorithm helps to locate hazards early.



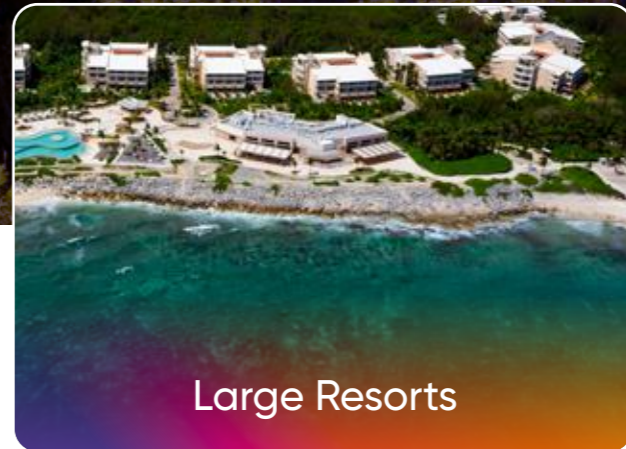
National Forests



High-Value Plantations



Wildlife Parks

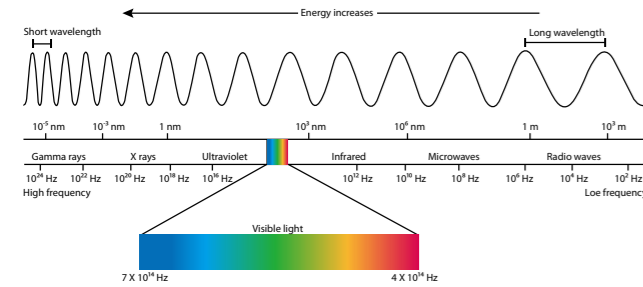


Large Resorts



# THE BASICS OF THERMAL CAMERAS

Each type of radiation has a unique wavelength. Any object with a temperature above absolute zero can emit a detectable amount of infrared radiation. The higher an object's temperature, the more infrared radiation is emitted.



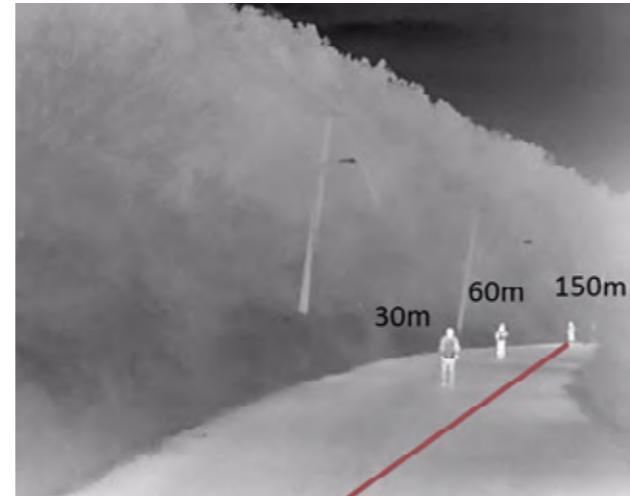
While invisible to human eyes, thermal cameras detect this kind of radiation (from wavelength 8 to 14 μm, or 8,000 – 14,000 nm) and produce images using temperature differences, making it possible to see the environment without visible light.

An infrared camera's effective range is what is meant by "seeing an object". Defined thresholds, known as Johnson's Criteria, refer to the minimum number of pixels necessary to either detect, recognize, or identify targets captured by scene imagers. The lower limits of detection, recognition, and identification (DRI), according to Johnson criteria are:

**Detection:** In order to distinguish an object from the background, the image must be covered by 1.5 or more pixels.

**Recognition:** In order to classify the object (animal, human, vehicle, boat, etc.), the image must have at least 6 pixels across its critical dimension.

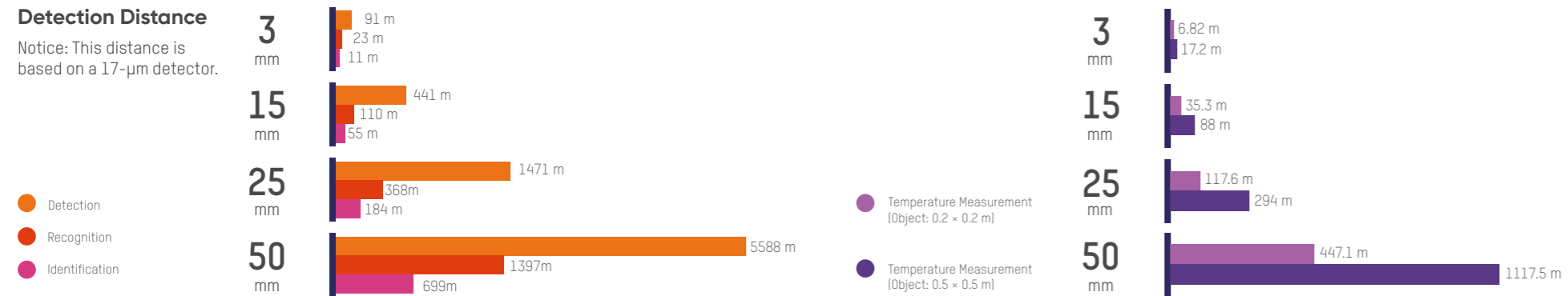
**Identification:** In order to identify the object and describe it in details, the critical dimension must be at least 12 pixels across.



Detection, recognition and identification distances (with 8 mm lens)

## Detection Distance

Notice: This distance is based on a 17-μm detector.



# WHY DO WE USE THERMOGRAPHY CAMERAS FOR TEMPERATURE MEASUREMENT?

Hikvision thermography cameras have been widely used in detecting temperature anomalies before a fire starts, finding hot spots and invisible defects on machinery or electrical systems that could indicate a potential problem. These cameras are also used for surveying areas that are hard to reach with conventional measurement tools.

## Detect Fire Risks Right Away



Hikvision thermography cameras can efficiently identify temperature anomalies with visualized images. When the surface temperature of an object is abnormal, the camera will immediately trigger the alarm for fast and accurate troubleshooting.

## Real-Time Warnings



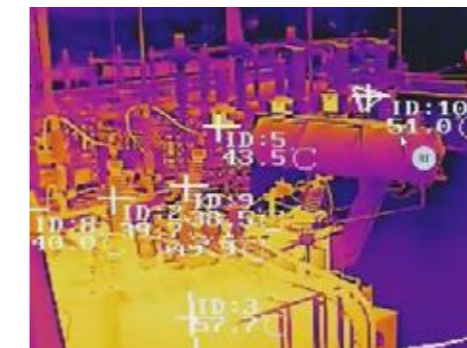
Identifies temperature anomalies within a few seconds to help protect your property.

## Non-Contact Inspection



Prevents damage to facilities and operations while providing continuous monitoring.

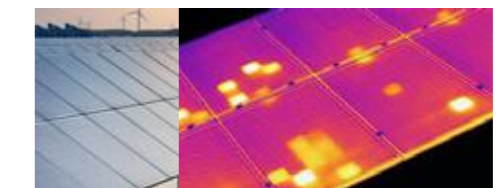
## Get Accurate Temperatures Instantly



Through strict calibration and standardized testing procedures, Hikvision has established a temperature measurement model that offers high accuracy up to ±2 °C or ±2% (whichever is greater), along with a wide range from 20 to 550 °C (-4° F to 1,022° F).

Flexible measurement rules help create more sensing methods.

## Visualized Image



Presents heating distribution clearly to visualize fire locations easily.

# PRODUCT MODELS

## DS-2TD2628T/QA

Thermographic Network  
Bullet Camera



Thermal: 256 x 192, 12 μm, Optical: 2688 x 1520  
Lens (Thermal): 3 / 7 mm  
Lens (Optical): 4 / 6 mm  
FOV (Thermal): 3 mm: 50.0 x 37.3°; 7 mm: 24.9 x 18.7°  
Audible Alert and Strobe Light  
Temperature Exception / Anomaly  
Temperature Exception Range: -20 to 550°C (-4 to +1,022°F)  
Temperature Accuracy: Max (±2°C, ±2%)  
Alarm Input: 2 ch. of inputs (0-5 VDC)  
Alarm Output: 2 ch., of relay outputs (alarm response actions configurable)  
Operating Temperature: -40 to 65°C (-40 to 149°F)  
IP67, IK10

## DS-2TD1228T/QA(B)

Thermographic Network  
Turret Camera



Thermal: 256 x 192, 12 μm, Optical: 2688 x 1520  
Lens (Thermal): 2 / 3 mm  
Lens (Optical): 2 / 4 mm  
FOV (Thermal): 2 mm: 90.0 x 65.4°; 3 mm: 50.0 x 37.3°  
Audible Alert and Strobe Light  
Temperature Exception / Anomaly  
Temperature Exception Range: -20 to 550°C (-4 to +1,022°F)  
Temperature Accuracy: Max (±2°C, ±2%)  
No Alarm Input  
Alarm Output: 2 ch., of relay outputs (alarm response actions configurable)  
Operating Temperature: -40 to 65°C (-40 to 149°F)  
IP66

## HM-TD3028T/Q(B)

Thermographic Network  
Cube Camera



Thermal: 256 x 192, 12 μm, Optical: 2688 x 1520  
Lens (Thermal): 2 / 3 mm  
Lens (Optical): 1.4 mm  
FOV (Thermal): 2 mm: 90.0 x 64.2°; 3 mm: 50.0 x 37.2°  
Smart white light supplement  
Temperature Exception / Anomaly  
Temperature Exception Range: -20 to 550°C (-4 to +1,022°F)  
Temperature Accuracy: Max (±2°C, ±2%)  
No Alarm Input  
Alarm Output: 2 ch., of relay outputs (alarm response actions configurable)  
Operating Temperature: -20 to 60°C (-4 to 140°F)  
IP67

## HM-TD2037T/X

Thermographic Network  
Automation Camera



Thermal: 384 x 288, 17 μm  
Lens (Thermal): 4 / 7 / 10 / 15 / 25 mm  
FOV: 4 mm: 90 x 65.2°; 7 mm: 60 x 44.1°; 10 mm: 37.5 x 28.5°; 15 mm: 24.3 x 18.4°; 25 mm: 14.8 x 11.2°  
Temperature Exception / Anomaly  
Temperature Exception Range: -20 to 550°C (-4 to +1,022°F)  
Temperature Accuracy: Max (±2°C, ±2%)  
Alarm Input: 1 ch. of input (0-3.3 VDC)  
Alarm Output: 1 ch. of relay outputs, alarm response actions configurable  
Operating Temperature: -20 to 50°C (-40 to 149°F)  
IP40

## HM-TD2638T/G0/T1Y

Thermographic Network  
Bullet Camera



Thermal: 384 x 288, 12 μm, Optical: 2688 x 1520  
Lens: 4 / 8 / 10 mm  
FOV: 4 mm: 60.2 x 45°; 8 mm: 35 x 26.1°; 15 mm: 26.5 x 19.8°  
VCA: Line crossing / Intrusion / Region entry & exit  
Temperature Exception / Anomaly  
Temperature Exception Range: -20 to 650°C (-4 to +1,202°F)  
Temperature Accuracy: Max (±2°C, ±2%)  
Alarm Input: 2 ch. of inputs (0-5 VDC)  
Alarm Output: 2 ch. of relay outputs, alarm response actions configurable  
Built-in EIS  
Operating Temperature: -40 to 70°C (-40 to 158°F)  
NEMA4X Anti-Corrosion Standard  
IP67, IK10

## DS-2TD2667T/P

Thermographic Network  
Bullet Camera



Thermal: 640 x 512, 17 μm, Optical: 2688 x 1520  
Lens: 15 mm  
FOV: 15 mm: 42.5 x 33.6°  
VCA: Line crossing / Intrusion / Region entry & exit  
Temperature Exception / Anomaly  
Temperature Exception Range: -20 to 550°C (-4 to +1,022°F)  
Temperature Accuracy: Max (±2°C, ±2%)  
Alarm Input: 2 ch. of inputs (0-5 VDC)  
Alarm Output: 2 ch. of relay outputs, alarm response actions configurable  
Operating Temperature: -40 to 65°C (-40 to 149°F)  
IP67, IK10

## HM-TD2668T/G0/T1Y

Thermographic Network  
Bullet Camera



Thermal: 640 x 512, 12 μm, Optical: 2688 x 1520  
Lens: 10 mm  
FOV: 10 mm: 45.1 x 35.7°  
VCA: Line crossing / Intrusion / Region entry & exit  
Temperature Exception / Anomaly  
Temperature Exception Range: -20 to 650°C (-4 to +1,202°F)  
Temperature Accuracy: Max (±2°C, ±2%)  
Alarm Input: 2 ch. of inputs (0-5 VDC)  
Alarm Output: 2 ch. of relay outputs, alarm response actions configurable  
Built-in EIS and TPM2.0 Encryption Module  
Operating Temperature: -40 to 70°C (-40 to 158°F)  
NEMA4X Anti-Corrosion Standard  
IP67, IK10

## HM-TD2067T/X

Thermographic Network  
Automation Camera



Thermal: 640 x 512, 17 μm  
Lens (Thermal): 6 / 15 / 25 mm  
FOV: 6 mm: 88.5 x 73.2°; 15 mm: 41.9 x 33.4°; 25 mm: 24.5 x 19.7°  
Temperature Exception / Anomaly  
Temperature Exception Range: -20 to 550°C (-4 to +1,022°F)  
Temperature Accuracy: Max (±2°C, ±2%)  
Alarm Input: 1 ch. of input (0-3.3 VDC)  
Alarm Output: 1 ch. of relay outputs, alarm response actions configurable  
Operating Temperature: -20 to 50°C (-40 to 149°F)  
IP40

## DS-2TD2137T/QY

Thermographic Network  
Bullet Camera



Thermal: 384 x 288, 17 μm  
Lens: 4 / 7 mm  
FOV: 4 mm: 90 x 65.3°; 7 mm: 60 x 44.1°  
VCA: Line crossing / Intrusion / Region entry & exit  
Temperature Exception / Anomaly  
Temperature Exception Range: -20 to 550°C (-4 to +1,022°C)  
Temperature Accuracy: Max (±2°C, ±2%)  
Alarm Input: 2 ch. of inputs (0-5 VDC)  
Alarm Output: 2 ch. of relay outputs, alarm response actions configurable  
Operating Temperature: -40 to 65°C (-40 to 149°F)  
NEMA4X Anti-corrosion standard  
IP67, IK10

## DS-2TD2167T/P

Thermographic Network  
Bullet Camera



Thermal: 640 x 512, 17 μm  
Lens: 7 mm  
FOV: 7 mm: 88.5 x 73.2°  
VCA: Line crossing / Intrusion / Region entry & exit  
Temperature Exception / Anomaly  
Temperature Exception Range: -20 to 550°C (-4 to +1,022°F)  
Temperature Accuracy: Max (±2°C, ±2%)  
Alarm Input: 2 ch. of inputs (0-5 VDC)  
Alarm Output: 2 ch. of relay outputs, alarm response actions configurable  
Operating Temperature: -40 to 65°C (-40 to 149°F)  
IP67, IK10

## HM-TD2168T/G0/T1Y

Thermographic Network  
Bullet Camera



Thermal: 640 x 512, 12 μm  
Lens: 5 mm  
FOV: 90 x 70.1°  
VCA: Line crossing / Intrusion / Region entry & exit  
Temperature Exception / Anomaly  
Temperature Exception Range: -20 to 650°C (-4 to +1,202°F)  
Temperature Accuracy: Max (±2°C, ±2%)  
Alarm Input: 2 ch. of inputs (0-5 VDC)  
Alarm Output: 2 ch. of relay outputs, alarm response actions configurable  
Built-in EIS and TPM2.0 Encryption Module  
Operating Temperature: -40 to 70°C (-40 to 158°F)  
NEMA4X Anti-Corrosion Standard  
IP67, IK10

## DS-2TD2637T/QY

Thermographic Network  
Bullet Camera



Thermal: 384 x 288, 17 μm, Optical: 2688 x 1520  
Lens: 7 / 10 / 15 mm  
FOV: 7 mm: 60 x 44.1°; 10 mm: 37.5 x 28.5°; 15 mm: 24.5 x 18.5°  
VCA: Line crossing / Intrusion / Region entry & exit  
Temperature Exception / Anomaly  
Temperature Exception Range: -20 to 550°C (-4 to +1,022°F)  
Temperature Accuracy: Max (±2°C, ±2%)  
Alarm Input: 2 ch. of inputs (0-5 VDC)  
Alarm Output: 2 ch. of relay outputs, alarm response actions configurable  
Operating Temperature: -40 to 65°C (-40 to 149°F)  
NEMA4X Anti-corrosion standard  
IP67, IK10

## DS-2TD4228T/S2

Network Bi-Spectrum  
Speed Dome



Thermal: 256 x 192, 12 μm, Optical: 2688 x 1520  
Thermal (Lens): 7/10 mm; Optical: 4.8-153 mm, 32X  
FOV: 7 mm: 25 x 18.8°; 10 mm: 18.1 x 13.6°  
VCA: Line crossing / Intrusion / Region entry & exit  
Temperature Exception / Anomaly  
Temperature Exception Range: -20 to 550°C (-4 to +1,022°F)  
Temperature Accuracy: Max (±2°C, ±2%)  
Alarm Input: Up to 7 ch. of input (0-5 VDC)  
Alarm Output: 2 ch. of relay outputs, alarm response actions configurable  
Operating Temperature: -30 to 65°C (-22 to 149°F)  
IP66

## DS-2TD4137T/W(B)

Network Bi-Spectrum  
Speed Dome



Thermal: 384 x 288, 17 μm, Optical: 2688 x 1520  
Thermal (Lens): 9 / 25mm; Optical: 6-240 mm  
FOV: 9 mm: 37.9 x 28.7°; 25 mm: 14.9 x 11.2°, VCA: Line crossing / Intrusion / Region entry & exit  
Temperature Exception / Anomaly  
Temperature Exception Range: -20 to 550°C (-4 to +1,022°F)  
Temperature Accuracy: Max (±2°C, ±2%)  
Alarm Input: Up to 7 ch. of input (0-5 VDC)  
Alarm Output: 2 ch. of relay outputs, alarm response actions configurable  
Operating Temperature: -40 to 65°C (-40 to 149°F)  
IP66, Smart Wiper

## HM-TD4137T/WY

Network Bi-Spectrum  
Speed Dome



Thermal: 384 x 288, 17 μm, Optical: 2688 x 1520  
Thermal (Lens): 9 / 25 / 50 mm; Optical: 6-240 mm  
FOV: 9 mm: 37.9 x 28.7°; 25 mm: 14.9 x 11.2°, 50 mm: 7.5 x 5.6°  
VCA: Line crossing / Intrusion / Region entry & exit  
Temperature Exception / Anomaly  
Temperature Exception Range: -20 to 550°C (-4 to +1,022°F)  
Temperature Accuracy: Max (±2°C, ±2%)  
Alarm Input: Up to 7 ch. of input (0-5 VDC)  
Alarm Output: 2 ch. of relay outputs, alarm response actions configurable  
Operating Temperature: -40 to 65°C (-40 to 149°F)  
IP66, smart Wiper, NEMA 4X Anti-Corrosion Housing

**DS-2TD4167T/W(B)**

Network Bi-Spectrum Speed Dome



Thermal: 640 x 512, 17 μm, Optical: 2688 x 1520  
Thermal (Lens): 9 / 25 mm; Optical: 6-240 mm  
FOV: 9 mm: 72.0 x 56.1°; 25 mm: 24.5 x 19.7°; VCA: Line crossing / Intrusion / Region entry & exit  
Temperature Exception / Anomaly  
Temperature Exception Range: -20 to 550°C [-4 to +1,022°F]  
Temperature Accuracy: Max (±2°C, ±2%)  
Alarm Input: Up to 7 ch. of input (0-5 VDC)  
Alarm Output: 2 ch. of relay outputs, alarm response actions configurable  
Operating Temperature: -40 to 65°C [-40 to 149°F]  
IP66, Smart Wiper

**HM-TD4167T/WY**

Network Bi-Spectrum Speed Dome



Thermal: 640 x 512, 17 μm, Optical: 2688 x 1520  
Thermal (Lens): 9 / 25 mm; Optical: 6-240 mm  
FOV: 9 mm: 72.0 x 56.1°; 25 mm: 24.5 x 19.7°; VCA: Line crossing / Intrusion / Region entry & exit  
Temperature Exception / Anomaly  
Temperature Exception Range: -20 to 550°C [-4 to +1,022°F]  
Temperature Accuracy: Max (±2°C, ±2%) Alarm Input: Up to 7 ch. of input (0-5 VDC)  
Alarm Output: 2 ch. of relay outputs, alarm response actions configurable  
Operating Temperature: -40 to 65°C [-40 to 149°F]  
IP66, Smart Wiper, NEMA 4X Anti-Corrosion Housing

**HM-TD5528T/W**

Network Bi-Spectrum Mini PTZ Camera



Thermal: 256 x 192, 12 μm, Optical: 2688 x 1520  
Thermal (Lens): 10 / 15 mm, Optical: 4MP, 4.8-153 mm  
FOV: 10 mm: 17.5 x 13.1°; 15 mm: 11.7 x 8.8°; VCA: Line crossing / Intrusion / Region entry & exit  
Temperature Exception / Anomaly  
Temperature Exception Range: -20 to 550°C [-4 to +1,022°F]  
Temperature Accuracy: Max (±2°C, ±2%)  
Alarm Input: 2 ch. of input (0-5 VDC)  
Alarm Output: 2 ch. of relay outputs, alarm response actions configurable  
Operating Temperature: -40 to 70°C [-40 to 158°F]  
IP67

**HM-TD5537T/W**

Network Bi-Spectrum Mini PTZ Camera



Thermal: 384 x 288, 17 μm, Optical: 2688 x 1520  
Thermal: 7 / 15 / 25 mm, Optical: 4MP, 4.8-153 mm  
FOV: 7 mm: 54.8 x 42.5°; 15 mm: 24.55 x 18.54°; 25 mm: 14.9 x 11.2°  
VCA: Line crossing / Intrusion / Region entry & exit  
Temperature Exception / Anomaly  
Temperature Exception Range: -20 to 550°C [-4 to +1,022°F]  
Temperature Accuracy: Max (±2°C, ±2%)  
Alarm Input: 2 ch. of input (0-5 VDC)  
Alarm Output: 2 ch. of relay outputs, alarm response actions configurable  
Operating Temperature: -40 to 70°C [-40 to 158°F]  
IP67

**DS-2TD8167/WY**

Network Bi-Spectrum Positioning System



Thermal : 640 × 512, 17 μm; Optical : 4: 2688 × 1520 2: 1920 × 1080  
Thermal Lens: 150 / 190 / 230 mm  
Optical Lens: C (6-336 mm) / E (10-780mm) / G (16.7-1000 mm)  
FOV: 150 mm: 4.15 × 3.32°; 190 mm: 3.46 × 2.77°; 230 mm: 2.83 × 2.27°  
VCA: Line crossing / Intrusion / Region entrance / Region exiting / Temperature exception  
Temperature Exception Range : -20 to 150°C [-4 to +302°F]  
Temperature Accuracy : ±8°C (±14.4°F)  
Working Temperature : -40 to 65°C [-40 to 149°F]  
Anti-Corrosion Coating (Y); Supplemental Light (L)  
IP66

**HM-TD8167/W**

Network Bi-Spectrum Positioning System



Thermal : 640 × 512, 17 μm; Optical : 4: 2688 × 1520; 2: 1920 × 1080  
Thermal Lens: 100 / 150 / 190 / 230 mm  
Optical Lens: C (6-336 mm) / E (10-780 mm) / G (16.7-1000 mm)  
FOV: 100 mm: 6.2 × 5°; 150 mm: 4.15 × 3.32°; 190 mm: 3.46 × 2.77°; 230 mm: 2.83 × 2.27°  
VCA: Line crossing / Intrusion / Region entrance / Region exiting / Ship detection  
Temperature Exception Range : -20 to 150°C [-4 to +302°F]  
Temperature Accuracy: ±8°C (±14.4°F)  
Working Temperature: -40 to 65°C [-40 to 149°F]  
Anti-Corrosion Coating (Y); Supplemental Light (L)  
IP66

**DS-2TD95C8/W**

Network Bi-Spectrum Sphere PTZ



Thermal : 1280 × 1024, 12 μm; Optical 4: 2688 × 1520 2: 1920 × 1080  
Thermal Lens: 150 / 190 / 300 mm  
Optical Lens: 2 MP, 10-1000 mm/4 MP, 10-800 mm  
FOV: 150 mm: 5.9 × 4.7°; 190 mm: 4.6 × 3.7°; 300 mm: 2.9 × 2.4°  
VCA: Line crossing / Intrusion / Region entrance / Region exiting / Ship detection  
Fire detection distance up to 12.5 km  
Smoke detection distance up to 16 km  
Working Temperature : -40 to 70°C [-40 to 158°F]  
IP67, NEMA 4X

**HM-TD95C8/W**

Network Bi-Spectrum Sphere PTZ



Thermal: 1280 × 1024, 12 μm; Optical: 2688 × 1520  
Thermal Lens: 150 / 190 / 300 mm  
Optical Lens: 10-800 mm  
FOV: 150 mm: 5.9 × 4.7°; 190 mm: 4.6 × 3.7°; 300 mm: 2.9 × 2.4°  
VCA: Line crossing / Intrusion / Region entrance / Region exiting / Ship detection  
Fire detection distance up to 12.5 km  
Smoke detection distance up to 12 km  
Working Temperature: -40 to 70°C [-40 to 158°F]  
IP67, NEMA 4X

**HM-TD5567T/W**

Network Bi-Spectrum Mini PTZ Camera



Thermal: 640 x 512, 17 μm, Optical: 2688 x 1520  
Thermal: 7 / 15 / 25 mm; Optical: 4MP, 4.8-153 mm  
FOV: 7 mm: 88.5 x 73.2°; 15 mm: 41.7x 33.3°; 25 mm: 24.9 x 20°  
VCA: Line crossing / Intrusion / Region entry & exit  
Temperature Exception / Anomaly  
Temperature Exception Range: -20 to 550°C [-4 to +1,022°F]  
Temperature Accuracy: Max (±2°C, ±2%)  
Alarm Input: Up to 2 ch. of input (0-5 VDC)  
Alarm Output: 2 ch. of relay outputs, alarm response actions configurable  
Operating Temperature: -40 to 70°C [-40 to 158°F]  
IP67

**DS-2TD6237T/W**

Network Bi-Spectrum Positioning System



Thermal: 384 x 288, 17 μm, Optical: 2688 x 1520  
Thermal: 25 / 50 mm; Optical: 4MP, 6-240 mm  
FOV: 25 mm: 14.88 x 11.19°; 50mm: 7.47 x 5.61°  
VCA: Line crossing / Intrusion / Region entry & exit  
Temperature Exception / Anomaly  
Temperature Exception Range: -20 to 550°C [-4 to +1,022°F]  
Temperature Accuracy: Max (±2°C, ±2%)  
Alarm Input: Up to 7 ch. of input (0-5 VDC)  
Alarm Output: 2 ch. of relay outputs, alarm response actions configurable  
Operating Temperature: -40 to 65°C [-40 to 149°F]  
IP66

**DS-2TD6267T/W**

Network Bi-Spectrum Positioning System



Thermal: 640 x 512, 17 μm, Optical: 2688 x 1520  
Thermal: 25 / 50 mm; Optical: 4MP, 6-240 mm  
FOV: 25 mm: 24.55 x 19.75°; 50mm: 12.42 x 9.95°  
VCA: Line crossing / Intrusion / Region entry & exit  
Temperature Exception / Anomaly  
Temperature Exception Range: -20 to 550°C [-4 to +1,022°F]  
Temperature Accuracy: Max (±2°C, ±2%)  
Alarm Input: Up to 7 ch. of input (0-5 VDC)  
Alarm Output: 2 ch. of relay outputs, alarm response actions configurable  
Operating Temperature: -40 to 65°C [-40 to 149°F]  
IP66

**DS-2TD2528T/Q(C)**

Thermography Explosion-proof Bullet



Thermal : 256 × 192, 12 μm; Optical : 2688 × 1520  
Thermal Lens : 3 / 7 / 10 mm; Optical Lens: 3.3 / 4 / 8 mm  
FOV: 3 mm: / 7 mm: / 10 mm: 50.0° × 37.3° / 24.9° × 18.7° / 18° × 13.5°  
Temperature Exception Range : -20 to 650°C [-4 to 1,202°F]  
Temperature Accuracy: Max (± 2°C, ± 2%)  
Working Temperature: -40 to 60°C [-40 to 140°F], IP68  
Standard, ATEX, IECEx  
IP68, NEMA 4X

**DS-2TD2537T/Q(C)**

Thermography Explosion-proof Bullet



Thermal : 384 × 288, 17 μm; Optical : 2688 × 1520  
Thermal Lens: 4 / 10 / 15 mm; Optical Lens: 2 / 4 mm  
FOV: 4 mm: / 10 mm: / 15 mm: 90.0 × 65.4° / 37.9 × 28.7° / 24.2 × 18.4°  
Temperature Exception Range : -20 to 650°C [-4 to 1,202°F]  
Temperature Accuracy: Max (± 2°C, ± 2%)  
Working Temperature: -40 to 60°C [-40 to 140°F]  
IP68 Standard, ATEX, IECEx

**DS-2TD2568T/G0/T1Y**

Thermography Explosion-proof Bullet



Thermal: 640 × 512, 12 μm; Optical: 2688 × 1520  
Thermal: 5/ 15 mm; Optical: 2.3 / 6.4 mm  
FOV: 5 mm / 15 mm: 90.0 × 67.2° / 29.7 × 23.6°  
Temperature Exception Range: -20 to 650°C [-4 to 1,202°F]  
Temperature Accuracy: Max (± 2°C, ± 2%)  
Working Temperature: -40 to 60°C [-40 to 140°F]  
Built in EIS and TPM2.0 Encryption Module  
IP68 Standard, ATEX, IECEx

**DS-2TD6567T-H4LX/W**

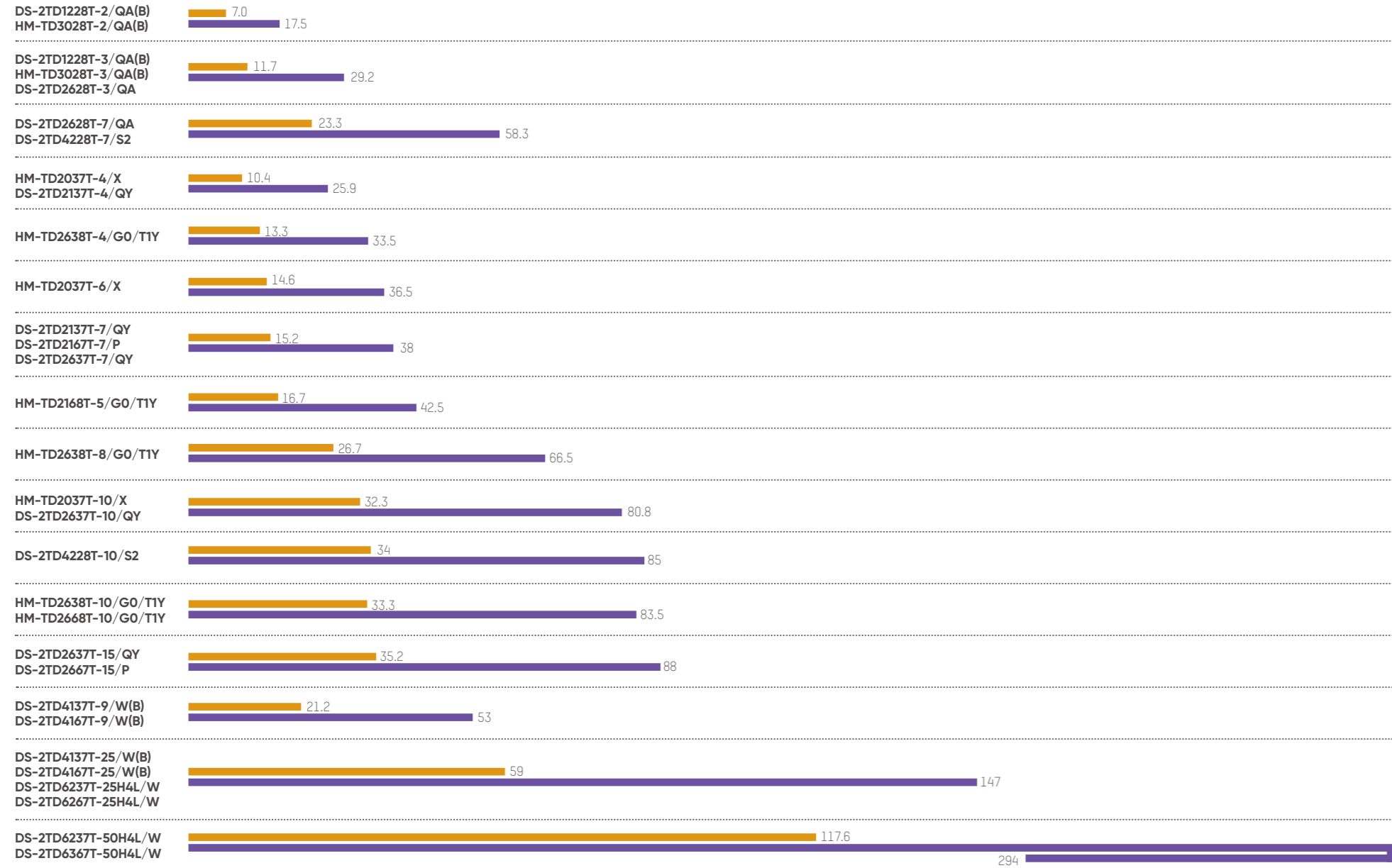
Thermography Explosion-proof Positioning System



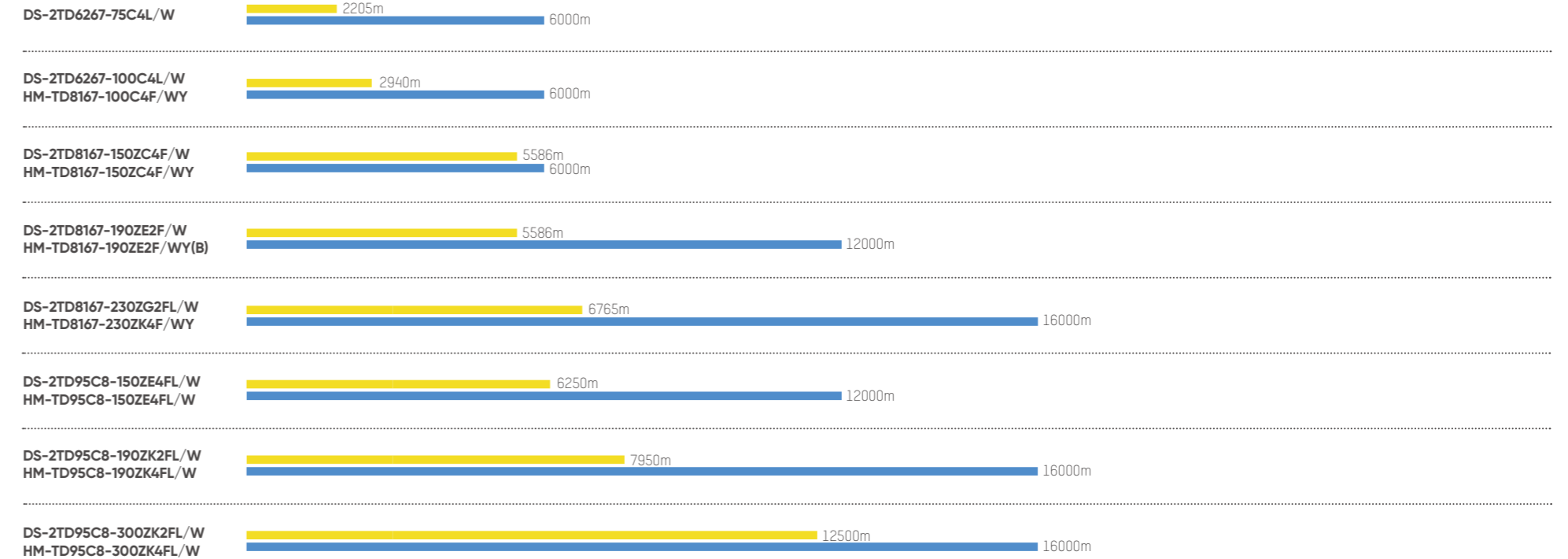
Thermal : 640×512, 17 μm, Optical : 2688 × 1520  
Lens (thermal): 25/ 50 mm  
Lens (optical): 6-240mm, 40X  
FOV: 25 mm: 24.9°×20° / 50 mm: 12.4°×10° (H × V)  
Temperature Exception Range: -20 to 550°C [-4 to 1,022°F]  
Temperature Accuracy: Max (± 2°C, ± 2%)  
Alarm Input: Up to 7 ch. of input (0-5 VDC)  
Alarm Output: 2 ch. of relay outputs, alarm response actions configurable  
Working Temperature: -40 to 60°C [-40 to 140°F]  
IP68 Standard, ATEX, IECEx



## Effective Coverage Small & Medium Area Fire Prevention



## Effective Coverage Large Area Fire Prevention





**Headquarters**

No.555 Qianmo Road, Binjiang District,  
Hangzhou 310051, China  
T +86-571-8807-5998  
Business: [overseasbusiness@hikvision.com](mailto:overseasbusiness@hikvision.com)  
Technical Support: [support@hikvision.com](mailto:support@hikvision.com)

**Hikvision Australia**  
T +61-2-8599-4233  
[salesau@hikvision.com](mailto:salesau@hikvision.com)

**Hikvision Azerbaijan**  
T +994 50 369 81 57  
[Azerbaijan.CATC@hikvision.com](mailto:Azerbaijan.CATC@hikvision.com)

**Hikvision Brazil**  
T +55-11-3318-0050  
[Latam.support@hikvision.com](mailto:Latam.support@hikvision.com)

**Hikvision Canada**  
T +1-866-200-6690  
[sales.canada@hikvision.com](mailto:sales.canada@hikvision.com)

**Hikvision Colombia**  
[sales.colombia@hikvision.com](mailto:sales.colombia@hikvision.com)

**Hikvision Czech**  
T +420 29 6182640  
[info.cz@hikvision.com](mailto:info.cz@hikvision.com)

**Hikvision Egypt**  
T +20223066117  
[sales.eg@hikvision.com](mailto:sales.eg@hikvision.com)

**Hikvision Europe**  
T +31 23 5542770  
[sales.eu@hikvision.com](mailto:sales.eu@hikvision.com)

**Hikvision France**  
T +33(0)1 85 330 450  
[info.fr@hikvision.com](mailto:info.fr@hikvision.com)

**Hikvision Germany**  
[sales.dach@hikvision.com](mailto:sales.dach@hikvision.com)

**Hikvision Hong Kong , China**  
[sales.hk@hikvision.com](mailto:sales.hk@hikvision.com)

**Hikvision Hungary KFT**  
[info.hu@hikvision.com](mailto:info.hu@hikvision.com)

**Hikvision India**  
T +91-22-6855 9944  
[sales@pramahikvision.com](mailto:sales@pramahikvision.com)

**Hikvision Indonesia**  
T +6221 2933 9366  
[Sales.Indonesia@hikvision.com](mailto:Sales.Indonesia@hikvision.com)

**Hikvision Israel**  
T +972 79 5555590  
[sales.israel@hikvision.com](mailto:sales.israel@hikvision.com)

**Hikvision Italy**  
T +39 0438 6902  
[info.it@hikvision.com](mailto:info.it@hikvision.com)

**Hikvision Kazakhstan**  
T +7 (727) 291-75-88  
[support@hikvision.kz](mailto:support@hikvision.kz)

**Hikvision Kenya**  
[wangchengbin@hikvision.com](mailto:wangchengbin@hikvision.com)

**Hikvision Korea**  
T +82-1661-8138  
[sales.korea@hikvision.com](mailto:sales.korea@hikvision.com)

**Hikvision Malaysia**  
T +60327224000  
[sales.my@hikvision.com](mailto:sales.my@hikvision.com)

**Hikvision Mexico**  
T +52 55 2624 0110  
[sales.mexico@hikvision.com](mailto:sales.mexico@hikvision.com)

**Hikvision New Zealand**  
T 09 217 3127  
[salesnz@hikvision.com](mailto:salesnz@hikvision.com)

**Hikvision New Panama**  
[Sales.centralamerica@hikvision.com](mailto:Sales.centralamerica@hikvision.com)

**Hikvision Pakistan**  
T +92-2135147526  
[support.pk@hikvision.com](mailto:support.pk@hikvision.com)

**Hikvision Philippines**  
[support.ph@hikvision.com](mailto:support.ph@hikvision.com)

**Hikvision Poland**  
T +48 22 460 01 50  
[info.pl@hikvision.com](mailto:info.pl@hikvision.com)

**Hikvision Russia**  
T +7-495-669-67-99  
[saleru@hikvision.com](mailto:saleru@hikvision.com)

**Hikvision Romania**  
[marketing.ro@hikvision.com](mailto:marketing.ro@hikvision.com)

**Hikvision Singapore**  
T +65 6684 4718  
[sg@hikvision.com](mailto:sg@hikvision.com)

**Hikvision South Africa**  
T +27 877018113  
[sale.africa@hikvision.com](mailto:sale.africa@hikvision.com)

**Hikvision Spain**  
T +34 91 737 16 55  
[info.es@hikvision.com](mailto:info.es@hikvision.com)

**Hikvision Tashkent**  
T +99-87-1238-9438  
[uzb@hikvision.ru](mailto:uzb@hikvision.ru)

**Hikvision Thailand**  
[sales.thailand@hikvision.com](mailto:sales.thailand@hikvision.com)

**Hikvision Turkey**  
T +90 216 521 70 70  
[support.tr@hikvision.com](mailto:support.tr@hikvision.com)

**Hikvision UAE**  
T +971-4-4432090  
[salesme@hikvision.com](mailto:salesme@hikvision.com)

**Hikvision UK & Ireland**  
T +44(0)1628 902 140  
[info.uk@hikvision.com](mailto:info.uk@hikvision.com)

**Hikvision Uzbekistan**  
T +998-71-233-55-50  
[uzbekistan@hikvision.com](mailto:uzbekistan@hikvision.com)

**Hikvision USA**  
T +1-909-895-0400  
[sales.usa@hikvision.com](mailto:sales.usa@hikvision.com)

**Hikvision Vietnam**  
T +84 24 7300 7586  
[sale.vn@hikvision.com](mailto:sale.vn@hikvision.com)