

World Peace Development corporate model

HOME ▶ Content 1 - Content 2



in partnership between
LA ELAHA ELLA ALLAH
HOLDINGS LIMITED



and
WORLD PEACE
DEVELOPMENT CORPORATION



FOOD

HOUSING

HEALTHCARE

EDUCATION

JUSTICE

SAFETY

JOB

TRADE

MANUFACTURING

 lordofworld.com

WATER

ENERGY

CLIMATE

REFORESTATION

RESOURCES

PROCESSING

COMMERCE

LOGISTICS

SPACE

TYPE I & II

World Peace Development corporate model

HOME ► Content 1 - Content 2



in partnership between
LA ELAHA ELLA ALLAH
HOLDINGS LIMITED



and
WORLD PEACE
DEVELOPMENT CORPORATION

Message from the President of the Boards Of Directors

Our GROUP has established a strong reputation by spearheading unique projects that positively impact the business sector across ASEAN. These initiatives have bolstered regional production capabilities, instilled confidence in importing international products, and enhanced the global export of high-quality ASEAN goods.



We are proud to foster cooperation and build constructive partnerships through successful investments in the localization of technologies, industries, trade, and expertise. Our aim is to integrate the best practices in management, technology, implementation, operation, finance, investment, marketing, import-export, and manufacturing, drawing from the successful experiences of leading companies from the United

States, China, Malaysia, Japan, and South Korea.

Our commitment extends beyond business success. We are dedicated to incorporating the World Peace Development corporate model to address critical global challenges such as climate change, food security, the housing crisis, healthcare improvement, and the standardization of education. We are ready to implement this model across enterprises, ensuring world safety against future environmental shocks, and promoting justice and welfare for all.

The approach and working mechanisms we adopt will be carefully tailored to each project, environment, and the opportunities available. Upholding values and integrity, our company is dedicated to delivering first-class products with a deep sense of social responsibility.

Dr. Rashed
President
rashed@lordofworld.com

FOOD

HOUSING

HEALTHCARE

EDUCATION

JUSTICE

SAFETY

JOB

TRADE

MANUFACTURING

 lordofworld.com

WATER

ENERGY

CLIMATE

REFORESTATION

RESOURCES

PROCESSING

COMMERCE

LOGISTICS

SPACE

TYPE I & II



World Peace Development Vision:

Our **GROUP** has a clear vision for the future. Our vision includes providing basic human rights by:

- Collaborating through partnerships and strategic alliances.
- Focusing on growth and added value essential to the industry sectors.
- Investing in companies with high returns.
- Creating international telecommunications networks.
- Exploring fertile areas for investment.
- Acquiring successful business opportunities.
- We are committed to achieving our vision by upholding our values and integrity and providing first-class products and services with social responsibility.



FOOD

HOUSING

HEALTHCARE

EDUCATION

JUSTICE

SAFETY

JOB

TRADE

MANUFACTURING

 lordofworld.com

WATER

ENERGY

CLIMATE

REFORESTATION

RESOURCES

PROCESSING

COMMERCE

LOGISTICS

SPACE

TYPE I & II



**Necessary
businesses & activities
for us
to deliver**

**World Peace Development
*corporate model***



FOOD

HOUSING

HEALTHCARE

EDUCATION

JUSTICE

SAFETY

JOB

TRADE

MANUFACTURING

 lordofworld.com

WATER

ENERGY

CLIMATE

REFORESTATION

RESOURCES

PROCESSING

COMMERCE

LOGISTICS

SPACE

TYPE I & II



Table of Contents 1

Basic Human Rights

- ✓ **Food for all people**
- ✓ **Housing for all people**
- ✓ **Healthcare for all people**
- ✓ **Education for all people**
- ✓ **Safety for all people**
- ✓ **Justice for all people**
- ✓ **Job and Employment for all people**
- ✓ **Safe Environment (Climate)**
- ✓ **Water and Sanitation for all**
- ✓ **Other Business Foundations**

✓ means PDF completed



FOOD

HOUSING

HEALTHCARE

EDUCATION

JUSTICE

SAFETY

JOB

TRADE

MANUFACTURING

 lordofworld.com

WATER

ENERGY

CLIMATE

REFORESTATION

RESOURCES

PROCESSING

COMMERCE

LOGISTICS

SPACE

TYPE I & II



Global **Hunger** Crisis

Well over 800 million people worldwide suffer from food insecurity, lacking access to sufficient and nutritious food. Many regions face seasonal shortages, leading to hunger and malnutrition, while others struggle with food distribution and agricultural challenges.

Global **Food** security

To address food insecurity, robot and AI-assisted greenhouses that use primarily water could boost mass food production. This would create a surplus for emergencies and support a swift shift to Type One Civilisation and planetary exploration.

F O O D
For All People

FOOD

HOUSING

HEALTHCARE

EDUCATION

JUSTICE

SAFETY

JOB

TRADE

MANUFACTURING

 lordofworld.com

WATER

ENERGY

CLIMATE

REFORESTATION

RESOURCES

PROCESSING

COMMERCE

LOGISTICS

SPACE

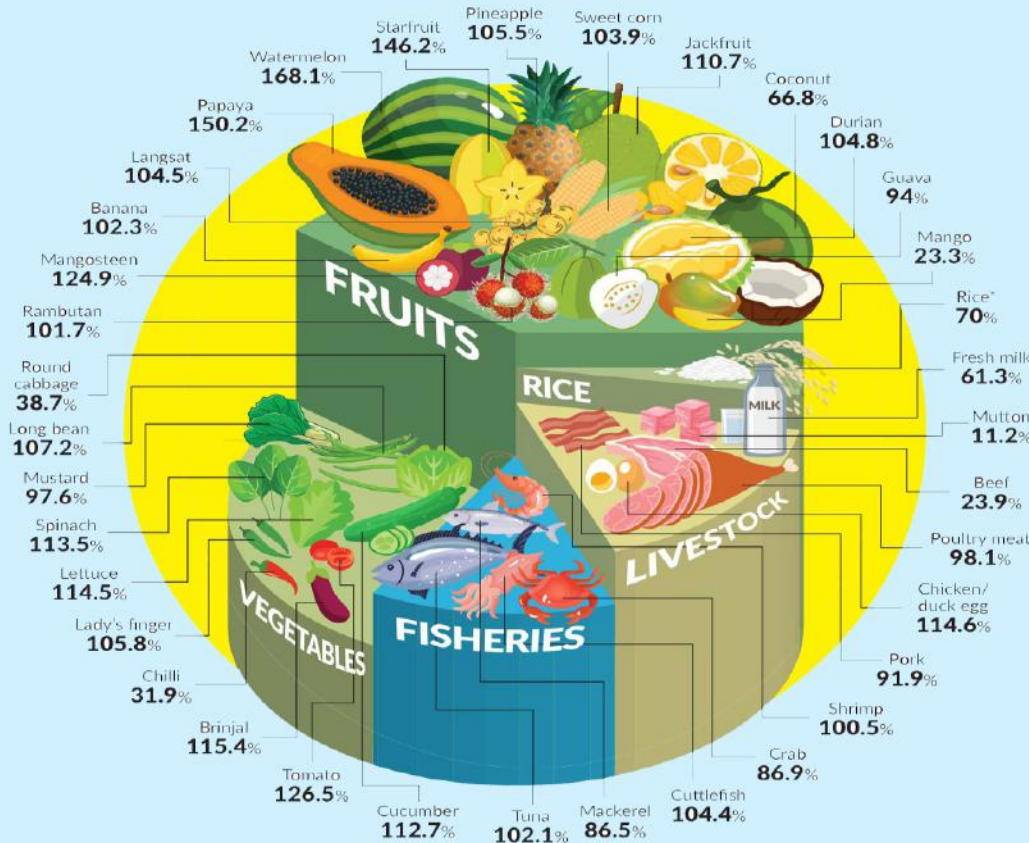
TYPE I & II



Self-sufficiency ratio (SSR) 2018

22 out of 36 selected agriculture commodities recorded SSR of more than 100% in 2018.

SSR: The extent to which a country's supply of agricultural commodities meet domestic demands. SSR of 100% or more indicates that production is sufficient to meet domestic needs.



*Refers to 2017
Source: Supply and Utilization Accounts Selected Agricultural Commodities Malaysia, 2014-2018 by the Statistics Department (DOSM).

Food Security, COVID-19 Case study

The COVID-19 pandemic has underscored the importance of global food security, revealing vulnerabilities in supply chains and the reliance on imports in many countries. The initial panic buying and disruptions in food distribution highlighted the need for more resilient and self-sufficient systems.

While food supplies have remained largely stable in many regions, the crisis exposed challenges in moving food from farms to consumers. Government initiatives, including financial allocations for food security and the establishment of national food security policies, are crucial steps forward. However, the dependence on imports for many staple foods remains a global concern.

Moving forward, it's essential to address underinvestment in agricultural research, small-scale farming, and climate change. The development of modern, competitive food production, including vertical farming and resilient crops, is key to ensuring food security, especially in the face of future emergencies and potential lockdowns.

Investments in technology, entrepreneurship, and strategic food reserves, coupled with effective government policies, can help safeguard global food supplies and support long-term international security and stability.



Food for all people Indoor Smart Farming

To achieve food security, sustainability, efficiency, **lockdown readiness**, environmental friendliness, and locality, and to produce fresh, live crops, fish, and crustaceans suitable to feed the world, and **for space programs**, each prefab stackable block is equipped with the following.

- **Temperature Controller:** This device maintains the optimal temperature tailored for the growth of each crops, fish, and crustaceans per block by balancing hot and cold water supplied by The Hydroloop System.
- **Atmospheric Pressure Control:** This feature adjusts the atmospheric pressure inside the block to mimic the natural environment of the crops.
- **Humidity Control:** This system ensures the right level of moisture in the air, which is crucial for the growth and health of the crops.
- **Dew-Point Control:** This control mechanism manages the temperature at which dew forms, helping to maintain the right level of moisture for the crops.
- **Air Contents:** This refers to the management of the composition of the air within the block, including the levels of oxygen, carbon dioxide, and other gases.
- **Water Control:** This system manages the supply and quality of water, which is vital for the hydration and growth of the crops, fish, and crustaceans.
- **Nutrient Control:** This feature ensures the provision of necessary nutrients for the growth of the crops, fish, and crustaceans.

These features make the blocks scalable, prefabricable, and capable of growing any type of crops, fish, and crustaceans close to consumers reducing long distant transportation, suited for space programs, thereby contributing to a greener and more sustainable future.

Outdoor Smart Farming

Our outdoor smart farming project is an innovative and sustainable solution that utilizes cutting-edge technologies to combat food scarcity and water shortage in the MENA region and worldwide. Our land is equipped with advanced sensors, drones, and robotics that collect real-time data on environmental conditions, crop growth, and pest infestations.

This data is analyzed using machine learning algorithms to optimize crop yields and minimize resource wastage, thereby enhancing the efficiency and eco-friendliness of our farming practices.

To power our operations, we utilize geothermal energy and the Hydroloop System. This system supplies renewable energy and allows for the adjustment of water quantity, temperature, lighting, and nutrients for various applications. These include cold storage, electricity generation, cooling, humidification, hot water provision, H₂ production and CO₂ absorption. This technology is not only environmentally friendly but also cost-effective, ensuring that we can offer high-quality produce at competitive prices and mass produce the system.

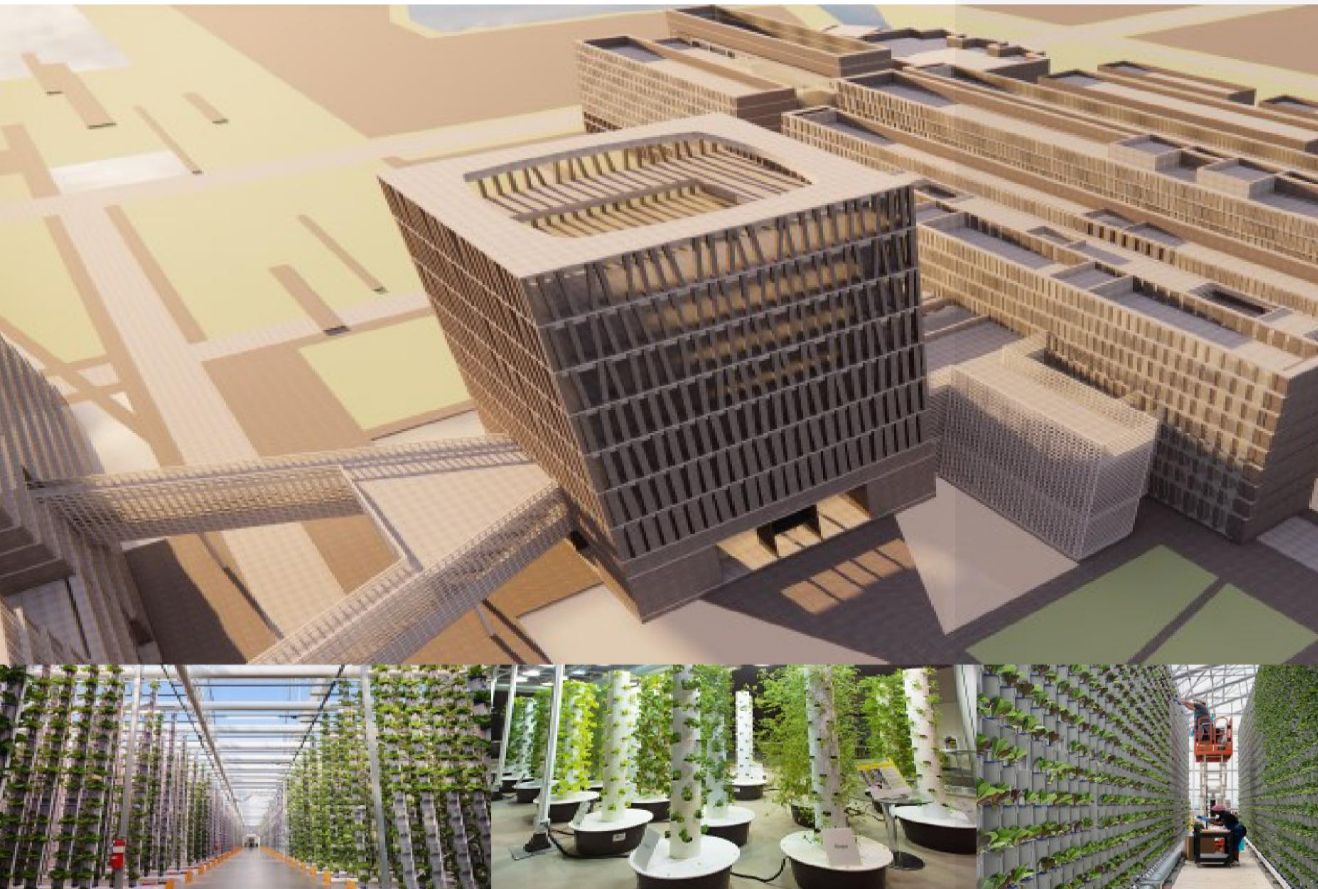
By leveraging these advanced technologies, we can produce more food with fewer resources, contributing to a more sustainable future on a global scale.





The World Peace Development Corporate Model Vertical Smart Farming

First in ASEAN and expandable to South Asia and MENA



The World Peace Development corporate model is initially being designed for expansion into flood- and drought-prone regions of ASEAN, focusing on sustainable development practices, including prefabrication with local resources and jackable floors to reduce costs. This model is further expandable to South Asia and the MENA region, leveraging innovative technologies such as the Hydroloop System. The Hydroloop System is a clean transportation system that provides water and electricity 24/7, supporting a range of sustainable initiatives, including vertical smart farming.

Vertical Smart Farming Overview:

Vertical smart farming, powered by the Hydroloop System's abundant water and affordable electricity, is an innovative method of growing crops by stacking multiple layers in a controlled environment. This technique maximizes space, increases yield, and is ideal for crops like spices and mint that need specific conditions.

By precisely controlling temperature, humidity, and lighting, vertical smart farming produces healthier crops faster and enables year-round cultivation, reducing reliance on seasonal changes. It is also environmentally friendly, using less water and fewer pesticides than traditional methods.

Integrating vertical smart farming ensures a reliable supply of high-quality crops, meeting the MENA market's needs while supporting the World Peace Development initiative's goals for sustainable, eco-friendly global practices.

FOOD

HOUSING

HEALTHCARE

EDUCATION

JUSTICE

SAFETY

JOB

TRADE

MANUFACTURING

 lordofworld.com

WATER

ENERGY

CLIMATE

REFORESTATION

RESOURCES

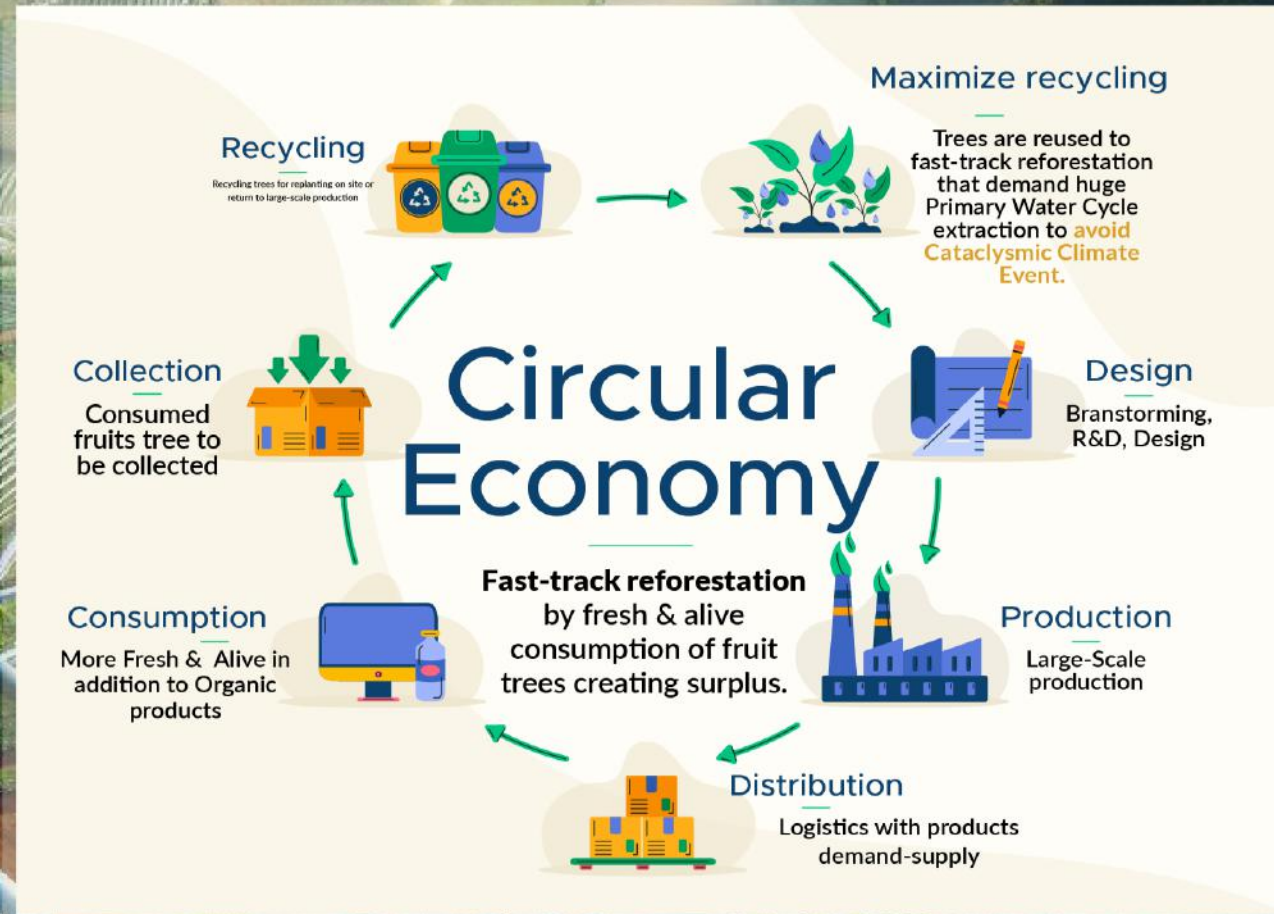
PROCESSING

COMMERCE

LOGISTICS

SPACE

TYPE I & II





Maximising Water Storage and Distribution *With flood and drought prevention*



Around the world, floods and droughts are significant obstacles to development, trapping people in perpetual poverty, causing enormous financial losses and restrain Type I progress.

Reducing Flood and Drought Impact

By delivering water from ASEAN 24/7 and year-round globally, storage is created to prepare for sudden rainfall. Greywater can be stored in the top layer, within the less impermeable underground area and groundfloor. This water is designated for agricultural use, lower-quality water demands, and supplying water treatment plants operating 24/7 and year-round. The treated water is used to fill the high-quality water pipe and the surplus top-up the impermeable layer of the aquifers.

To maximize water storage, ground floors in flood-prone zones can be left as temporary water storage areas, allowing for the slow filling of the less impermeable groundwater layer.

The Hydroloop™ System delivers greywater for agriculture and lower-grade water applications, while a separate pipeline supplies high-quality water for drinking and other essential uses, including cataclysm mitigation.

FLOOD

DROUGHT

CATACLYSM

FOOD

HOUSING

HEALTHCARE

EDUCATION

JUSTICE

SAFETY

JOB

TRADE

MANUFACTURING

 lordofworld.com

WATER

ENERGY

CLIMATE

REFORESTATION

RESOURCES

PROCESSING

COMMERCE

LOGISTICS

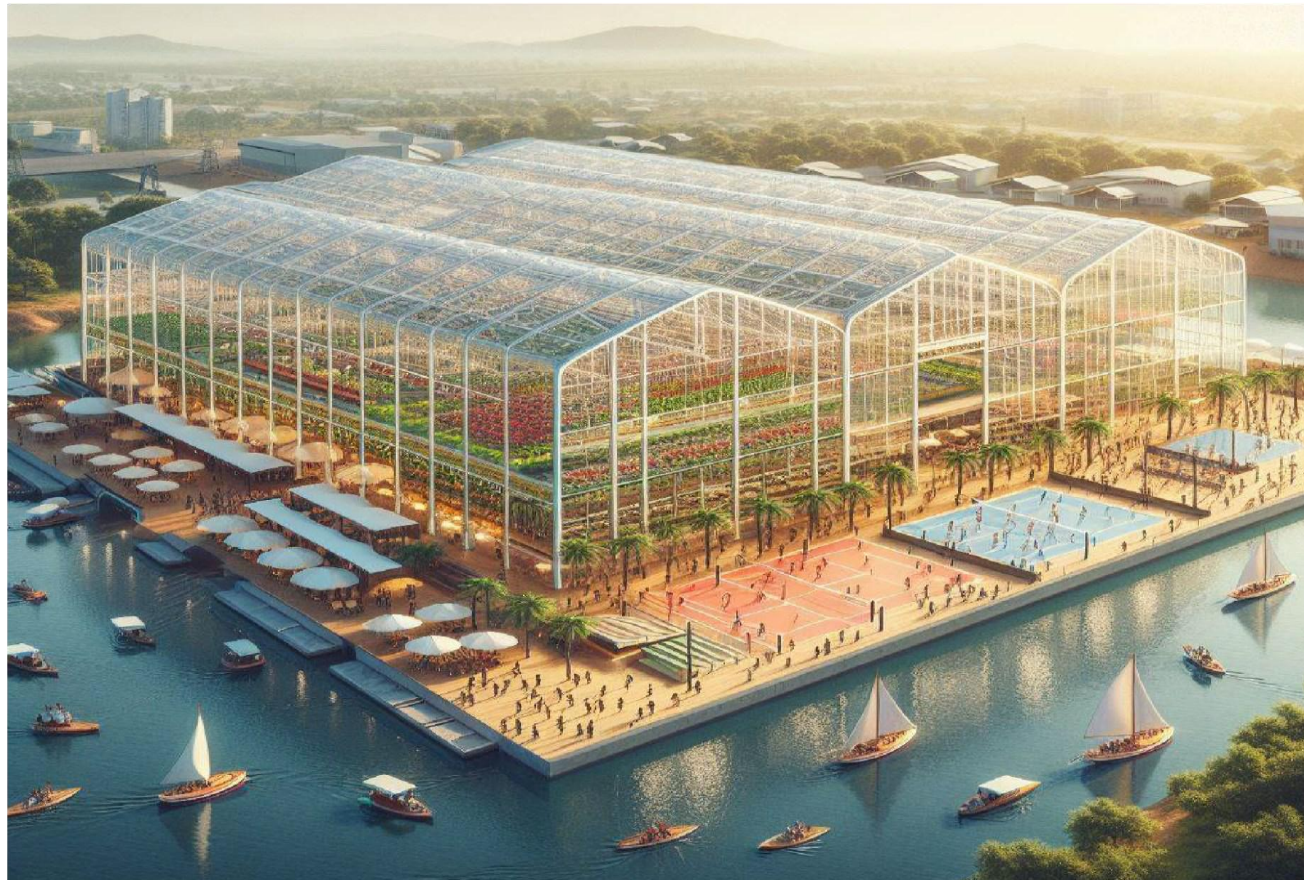
SPACE

TYPE I & II



Yearly Exposition

Showcasing Net Zero Achievement Goals



Enhancing Connectivity Through Yearly Expositions: Experience the Bounty of Nature

Organise yearly expositions to showcase the integration of large-scale smart farming, aquaponics, greenhouses, and sustainable technologies to offer visitors a unique opportunity to reconnect with nature.

These events, powered by the Hydroloop System, will create an interactive experience where visitors can explore thriving varieties of crops, pick fresh produce, and participate in cooking classes. The exposition serves as a platform for sharing knowledge and fostering community, blending entertainment with education.

By demonstrating the potential of sustainable farming methods, these events inspire a deeper connection to the environment and promote a more sustainable future.

FLOOD

DROUGHT

CATAclysm

FOOD

HOUSING

HEALTHCARE

EDUCATION

JUSTICE

SAFETY

JOB

TRADE

MANUFACTURING

 lordofworld.com

WATER

ENERGY

CLIMATE

REFORESTATION

RESOURCES

PROCESSING

COMMERCE

LOGISTICS

SPACE

TYPE I & II



Food Security Dependencies

Sectors dependent to Food Security

Food security is a complex issue that interlinks with numerous sectors that influence food security

- 1. Housing:** Stable housing provides a safe environment for food storage, preparation, and local food production.
- 2. Water:** Essential for irrigation, livestock, and food preparation, reliable water access is critical for food production and safety.
- 3. Energy:** Power is needed for food production, processing, and distribution, with sustainable energy enhancing supply chain stability.
- 4. Education:** Educated communities adopt better farming practices and make informed dietary choices, improving food security.
- 5. Healthcare:** Healthy populations are essential for food production and consumption, while healthcare ensures food safety.
- 6. Justice:** Equitable legal frameworks ensure fair access to resources, protecting the rights of farmers and consumers.
- 7. Job and Employment:** Employment provides income to purchase food, with job security in food-related industries ensuring stable production.
- 8. Climate Change:** Climate impacts crop yields; addressing it is key to maintaining stable food production.
- 9. Sustainability:** Sustainable farming ensures long-term food security by protecting resources for future generations.
- 10. Reforestation:** Helps stabilize ecosystems, maintain water cycles, and support agriculture, enhancing food security.
- 11. Resource Mining:** Essential minerals for fertilizers impact crop yields, but unsustainable mining can harm food production.
- 12. Food and Products Processing:** Extends food shelf life and accessibility but must be done sustainably to avoid waste and preserve nutrition.
- 13. Commerce:** Facilitates food distribution, ensuring access and fair compensation for producers.
- 14. Trade:** Global trade systems provide access to diverse food sources and help balance supply and demand, contributing to food security.
- 15. Logistics:** Efficient transport networks reduce waste and ensure timely food distribution.
- 16. Space Programs:** Advance technologies for food production and climate monitoring, supporting food security on Earth for Space Programs.

FLOOD

DROUGHT

CATAclysm

FOOD

HOUSING

HEALTHCARE

EDUCATION

JUSTICE

SAFETY

JOB

TRADE

MANUFACTURING

 lordofworld.com

WATER

ENERGY

CLIMATE

REFORESTATION

RESOURCES

PROCESSING

COMMERCE

LOGISTICS

SPACE

TYPE I & II

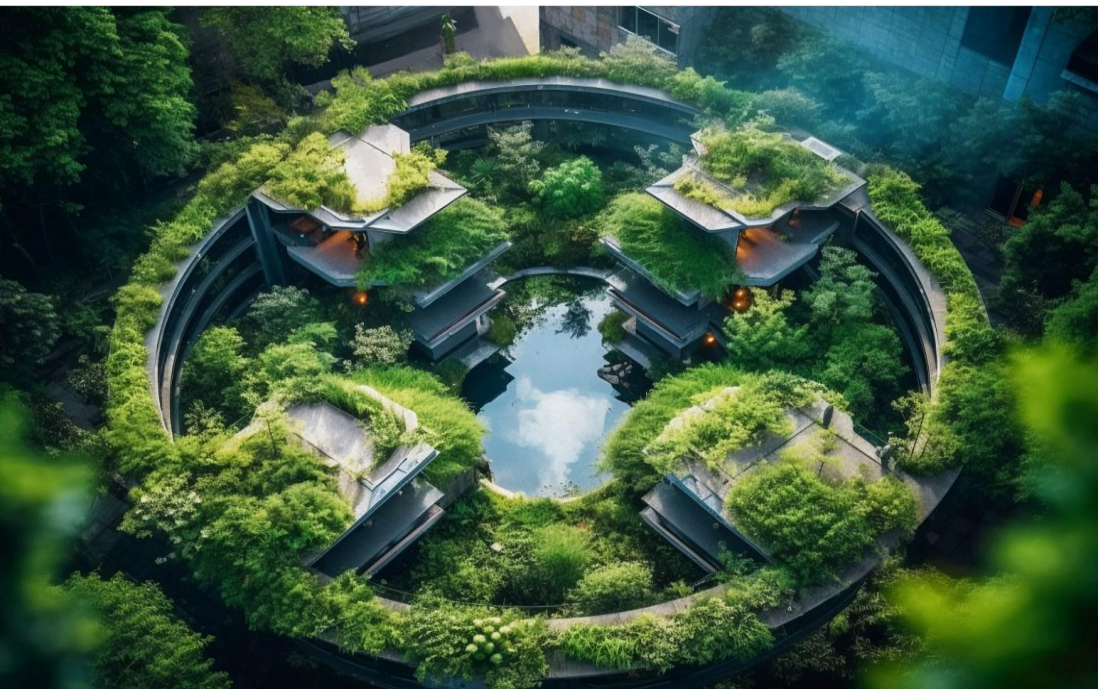


Global **Housing** Crisis

The Global Housing Crisis is a pressing issue that highlights the widespread struggle to provide affordable and adequate housing to people across the world.

As rapid urbanization drives up property prices and housing supply lags behind demand, more individuals and families face homelessness, overcrowding, and housing insecurity.

This crisis is further intensified by economic inequality, population growth, and the escalating impacts of climate change, such as floods, droughts, and other extreme weather events, which disrupt communities and exacerbate the already dire housing shortages.



FOOD

HOUSING

HEALTHCARE

EDUCATION

JUSTICE

SAFETY

JOB

TRADE

MANUFACTURING

 lordofworld.com

WATER

ENERGY

CLIMATE

REFORESTATION

RESOURCES

PROCESSING

COMMERCE

LOGISTICS

SPACE

TYPE I & II

World Peace Development corporate model

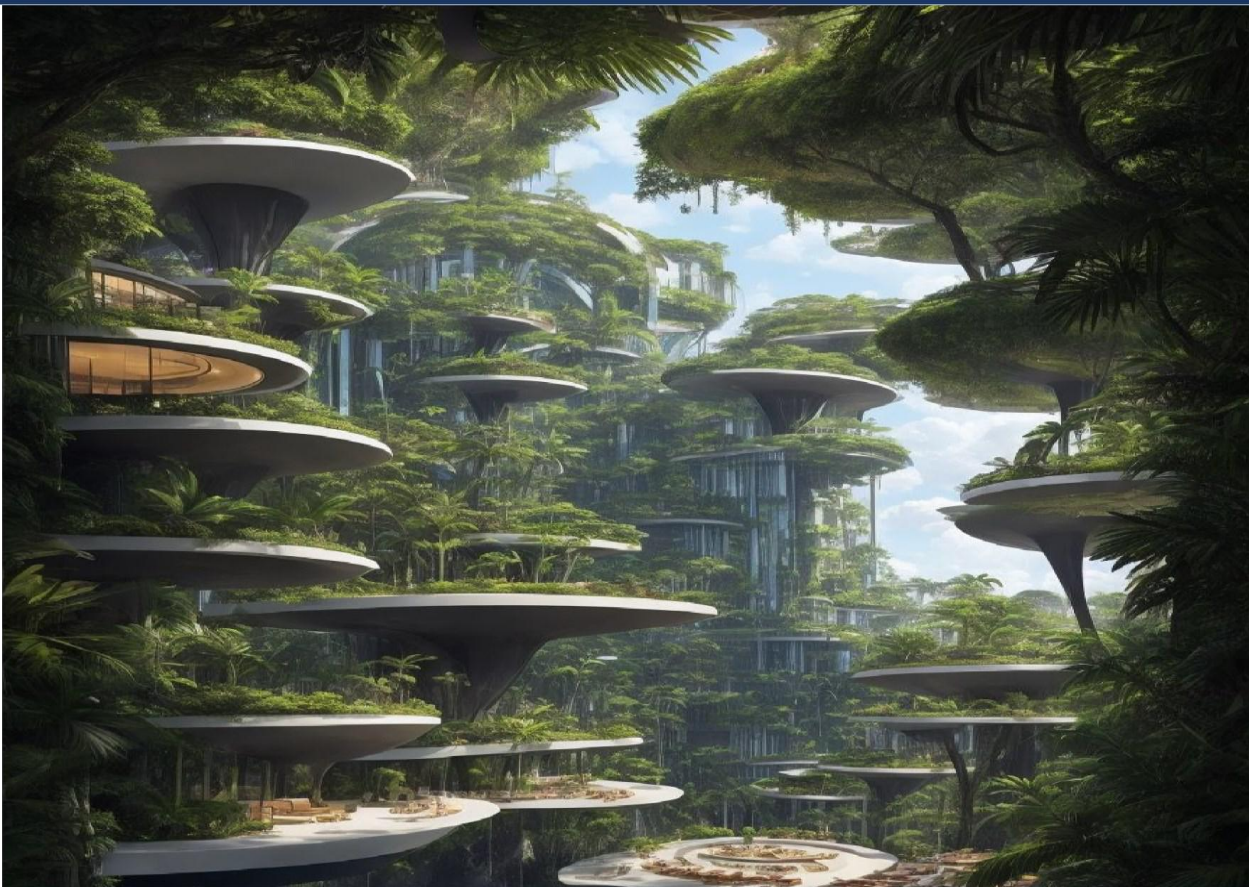
HOME ▶ Content 1 - Content 2



in partnership between
**LA ELAHA ELLA ALLAH
HOLDINGS LIMITED**



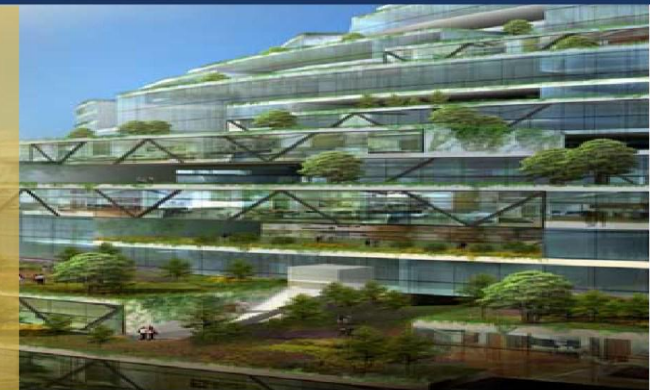
and
**WORLD PEACE
DEVELOPMENT CORPORATION**



Healthy Lifestyle

Healthy Living

Living food, from Farm to Table and back to farm. Resilient, healthy, sustainable, and Nature-based.



The ultimate goal of meeting the food, energy, water, and commodity needs and requirements of people on Earth is a crucial aspect of sustainable development. The United Nations has identified the nexus between water, food, and energy as a key area for integrated and sustainable management to balance the needs of people, nature, and the economy, focusing on climate change, biodiversity loss, social inequality, and other UNSDGs.

Once we achieve this goal, we can focus on exploring beyond our planet. Exploring beyond our planet is an exciting prospect, but, except to be resilient to “unavoidable risks”, it should not be pursued at the expense of addressing pressing issues on Earth such as food, energy, and water requirements.

Property & Real Estate

Sustainable and Healthy Living

FLOOD

DROUGHT

CATAclysm

FOOD

HOUSING

HEALTHCARE

EDUCATION

JUSTICE

SAFETY

JOB

TRADE

MANUFACTURING

 lordofworld.com

WATER

ENERGY

CLIMATE

REFORESTATION

RESOURCES

PROCESSING

COMMERCE

LOGISTICS

SPACE

TYPE I & II



The World Peace Development Corporate Model Green Skyscrapers

Accelerating the Net Zero Achievement Goal



Scaling up urban agriculture to leverage transformative change, build and maintain resilient and sustainable urban systems and scaling up urban agriculture.

Green skyscrapers with vertical farming are sustainable urban structures that integrate agriculture into city environments. Powered by the Hydroloop System, they use cheap water and energy, featuring green walls and roofs that improve air quality and reduce urban heat. Plants are supplied by large-scale smart farming and floating greenhouses, fish and crustaceans by aquaponics, allowing them to continue to grow locally and remain fresh. These skyscrapers cut logistics costs, create jobs, and provide fresher produce with less plastic packaging. Additionally, they enhance health and tourism, contributing in floods and droughts prevention, and reduce industrialization costs and waste. With efficient land use, continuous water supply, and fire prevention systems, they offer a reliable, eco-friendly solution and form an integral part of the circular economy for urban Net-Zero Circular Economy.

FLOOD

DROUGHT

CATAclysm

FOOD

HOUSING

HEALTHCARE

EDUCATION

JUSTICE

SAFETY

JOB

TRADE

MANUFACTURING

 lordofworld.com

WATER

ENERGY

CLIMATE

REFORESTATION

RESOURCES

PROCESSING

COMMERCE

LOGISTICS

SPACE

TYPE I & II

World Peace Development corporate model

HOME ▶ Content 1 - Content 2



in partnership between
LA ELAHA ELLA ALLAH
HOLDINGS LIMITED



and
WORLD PEACE
DEVELOPMENT CORPORATION

Floating Aquaponics

Model for flood and drought prevention



In addition to floods and droughts, daily commutes, pollution, and processed foods are significant obstacles to human health and development, leading to enormous financial losses and impeding progress toward a Type I civilization. LO

Eliminating the Impact of Flood and Drought

Floating aquaponics systems, integrated with living spaces, offer a solution for local self-sufficiency. These systems enable large-scale smart farming, producing extra fresh, live, and customized to individual dietary needs. This approach minimizes packaging, logistics, and waste, enhancing health benefits while ensuring food security, regardless of floods or droughts. As a result, communities can shift their focus to other pressing issues.

The mobility of floating buildings allows them to be reconfigured for maximum efficiency and minimized commutes, thereby reducing carbon footprint and energy consumption. This adaptability contributes to the broader fight against climate change and pollution, making floating structures a sustainable and resilient option for the future.

FLOOD

DROUGHT

CATAclysm

FOOD

HOUSING

HEALTHCARE

EDUCATION

JUSTICE

SAFETY

JOB

TRADE

MANUFACTURING

 lordofworld.com

WATER

ENERGY

CLIMATE

REFORESTATION

RESOURCES

PROCESSING

COMMERCE

LOGISTICS

SPACE

TYPE I & II



The World Peace Development Corporate Model Compact Floating Module for Budget-Friendly, Mobile Living *Model for flood and drought prevention*



Adaptable Solutions for Flood and Drought Mitigation

The Compact Floating Module offers a more affordable and mobile alternative to its medium-sized counterpart. Designed for easy reconfiguration, this smaller module integrates living spaces with floating aquaponics systems, providing a pathway to local self-sufficiency. These systems support smart farming on a large scale, offering fresh, live produce tailored to individual dietary needs. By reducing packaging, logistics, and waste, they enhance health and secure food supply, unaffected by floods or droughts, allowing communities to concentrate on other critical concerns.

The mobility of these floating modules allows for reconfiguration to maximize efficiency and reduce commuting distances, thereby lowering carbon emissions and energy use. This flexibility plays a crucial role in combating climate change and pollution, positioning floating structures as a forward-thinking, sustainable choice for resilient living.

FLOOD

DROUGHT

CATAclysm

FOOD

HOUSING

HEALTHCARE

EDUCATION

JUSTICE

SAFETY

JOB

TRADE

MANUFACTURING

 lordofworld.com

WATER

ENERGY

CLIMATE

REFORESTATION

RESOURCES

PROCESSING

COMMERCE

LOGISTICS

SPACE

TYPE I & II



Good Health & Well-Being

Good Health and Well-Being aims to ensure healthy lives and promote well-being for all people at all ages.

This goal focuses on improving global health by reducing maternal and child mortality, ending epidemics of major communicable diseases like AIDS, tuberculosis, and malaria, and combating emerging health issues.

Achieving Good Health and Well-Being requires several key actions:

- 1. Strengthen Healthcare Systems:** Invest in healthcare infrastructure and train professionals to ensure everyone has access to quality care.
- 2. Universal Health Coverage:** Implement policies for affordable, accessible healthcare for all, including marginalized groups.
- 3. Prevent and Control Diseases:** Expand programs to prevent and treat infectious and non-communicable diseases through vaccination and public health campaigns.
- 4. Promote Healthy Lifestyles:** Encourage healthy behaviors through education and public awareness.
- 5. Research and Innovation:** Invest in medical research to develop new treatments and technologies.
- 6. Address Social Determinants:** Improve conditions like poverty, education, and clean water, which impact health outcomes.

By focusing on these areas, we can achieve global health and well-being for all.

FLOOD

DROUGHT

CATAclysm

FOOD

HOUSING

HEALTHCARE

EDUCATION

JUSTICE

SAFETY

JOB

TRADE

MANUFACTURING

 lordofworld.com

WATER

ENERGY

CLIMATE

REFORESTATION

RESOURCES

PROCESSING

COMMERCE

LOGISTICS

SPACE

TYPE I & II

World Peace Development corporate model

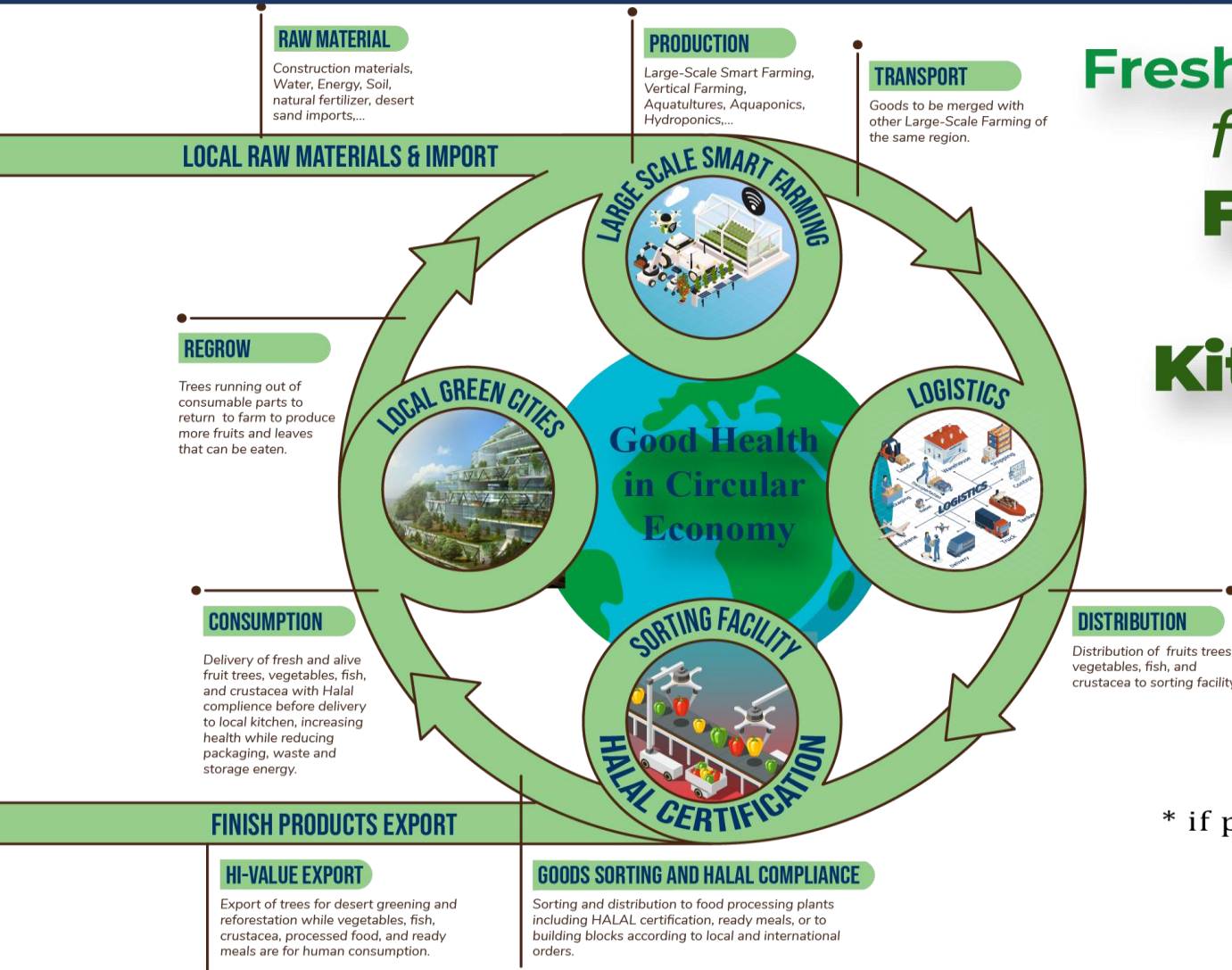
HOME ▶ Content 1 - Content 2



in partnership between
**LA ELAHA ELLA ALLAH
HOLDINGS LIMITED**



and
**WORLD PEACE
DEVELOPMENT CORPORATION**



Fresh & alive* from Farm to Kitchen

Fresh and alive food, sourced directly from farms to kitchens, is key to improving health. It retains more nutrients and vitamins than food stored or transported over long distances, leading to a healthier diet. Free from preservatives and chemicals, fresh produce supports digestion, boosts the immune system, and promotes healthier eating habits. This farm-to-kitchen approach also reduces the carbon footprint, supports local farmers, and encourages a deeper connection to our food, contributing to overall well-being.

* if practical

FLOOD

DROUGHT

CATAclysm

FOOD

HOUSING

HEALTHCARE

EDUCATION

JUSTICE

SAFETY

JOB

TRADE

MANUFACTURING

lordofworld.com

WATER

ENERGY

CLIMATE

REFORESTATION

RESOURCES

PROCESSING

COMMERCE

LOGISTICS

SPACE

TYPE I & II



Smart City for Health Rejuvenation and Cleansing

This smart city is designed to promote health and well-being by creating a healthy environment with clean and fresh air and water, green spaces, and eco-friendly infrastructure. The city ensures access to fresh, nutritious food through local markets and urban smart farming, supports sustainable living with safe and comfortable, energy-efficient housing, and offers a high quality of life. Its comprehensive approach encourages a healthy lifestyle and overall rejuvenation for its residents.

FLOOD

DROUGHT

CATACLYSM

FOOD

HOUSING

HEALTHCARE

EDUCATION

JUSTICE

SAFETY

JOB

TRADE

MANUFACTURING

 lordofworld.com

WATER

ENERGY

CLIMATE

REFORESTATION

RESOURCES

PROCESSING

COMMERCE

LOGISTICS

SPACE

TYPE I & II



Concept and win-win configuration

1: Strategic Cooperation With Asia Healthcare

- Added Value To Hospitals
- Productivity
- Learning And Efficiency

2: Supporting Asia With Top Notch

- Technology
- Molecular Genomics
- Genetic Health
- Precision Medicine
- Designed Therapies

3: Multimodal Infrastructure that match

- Vientiane Airport
- Direct Access To Site
- High Roads Access
- Port (Sea) Access



Our Services

- Professional Doctor
- Best Room
- Hygienic Medical Devices
- Best Treatment



Your Health Is Our Priority

We Give The Best Service

FLOOD DROUGHT CATAclysm

FOOD

HOUSING

HEALTHCARE

EDUCATION

JUSTICE

SAFETY

JOB

TRADE

MANUFACTURING

lordofworld.com

WATER

ENERGY

CLIMATE

REFORESTATION

RESOURCES

PROCESSING

COMMERCE

LOGISTICS

SPACE

TYPE I & II

World Peace Development corporate model

HOME ▶ Content 1 - Content 2



in partnership between
**LA ELAHA ELLA ALLAH
HOLDINGS LIMITED**



and
**WORLD PEACE
DEVELOPMENT CORPORATION**

Quality **Education** for All
Quality Education for All is a global initiative aimed at ensuring inclusive and equitable education for every individual, regardless of their background or circumstances.

Education is the cornerstone of sustainable development, empowering people to improve their lives, contribute to their communities, and drive economic growth. This initiative emphasizes lifelong learning, improving literacy and numeracy, and ensuring that all children, especially the most vulnerable, have access to free and quality primary and secondary education.

It is essential for breaking the cycle of poverty, promoting gender equality, and fostering global peace and stability. By investing in education, we can unlock the potential of every individual and create a more just, equitable, and prosperous world for future generations.

FLOOD

DROUGHT

CATACLYSM

FOOD

HOUSING

HEALTHCARE

EDUCATION

JUSTICE

SAFETY

JOB

TRADE

MANUFACTURING

 lordofworld.com

WATER

ENERGY

CLIMATE

REFORESTATION

RESOURCES

PROCESSING

COMMERCE

LOGISTICS

SPACE

TYPE I & II

World Peace Development corporate model

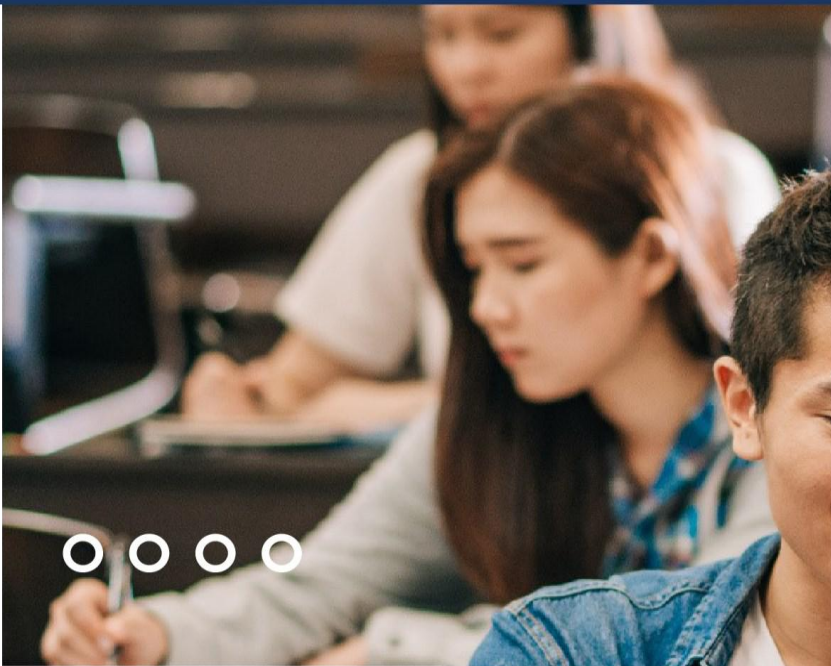
HOME ▶ Content 1 - Content 2



in partnership between
**LA ELAHA ELLA ALLAH
HOLDINGS LIMITED**



and
**WORLD PEACE
DEVELOPMENT CORPORATION**



Education

A state-of-the-art education system designed to support and implement a carbon-negative working environment, aligning with the practices of enterprises and future partners.



FLOOD

DROUGHT

CATACLYSM

FOOD

HOUSING

HEALTHCARE

EDUCATION

JUSTICE

SAFETY

JOB

TRADE

MANUFACTURING

 lordofworld.com

WATER

ENERGY

CLIMATE

REFORESTATION

RESOURCES

PROCESSING

COMMERCE

LOGISTICS

SPACE

TYPE I & II



Net-Zeroing together



1. Collaborate - 2. Engage with others - 3. Publish

Collaborate in MS 365 Teams, Engage with Viva Engage, and Publish (internal: SharePoint, External: website)

Define The Problem/Defect

Describe just the problem not all causes, engage with the specific team to collaborate

Teams Channel	Teams Email
AGRI: Agriculture	agri@oe.totrade.co
AHF: Animal Husbandry & Fisheries	afh@oe.totrade.co
FP: Financial & Procurement	fp@oe.totrade.co
FOR: Forestry for Reforestation	for@oe.totrade.co
IC: International Cooperation	ic@oe.totrade.co
IEC: Irrigation, Electricity, Clean Transport	iec@oe.totrade.co
IPO: International Trading (IPO)	ipo@oe.totrade.co
ITC: Information Technology and Cooperation	it@oe.totrade.co
LMD: Land Management and Development	lmd@oe.totrade.co
RD: Research and Development	rd@oe.totrade.co
RDC: Rural Development Cooperation	rdc@oe.totrade.co
TPP: Technical Promotion & Processing	tpp@oe.totrade.co



Who use it?

Contact IT

online apps

ios apps

MS365
Teams

To Do
Loop...

Instructions

Teams

Engage

SharePoint

FOOD

HOUSING

HEALTHCARE

EDUCATION

JUSTICE

SAFETY

JOB

TRADE

MANUFACTURING

lordofworld.com

WATER

ENERGY

CLIMATE

REFORESTATION

RESOURCES

PROCESSING

COMMERCE

LOGISTICS

SPACE

TYPE I & II



Safety

Earth Safety involves protecting our planet from existential threats like climate change, which could lead to climate collapse with extreme weather, rising sea levels, and ecological damage. It also addresses risks from potential asteroid impacts and the dangers of war and conflict, which threaten global stability.

World Peace Development Corporate Model: Ensuring Earth's Safety

The World Peace Development Corporate Model advocates global cooperation, innovation, and proactive measures to safeguard Earth from major threats like climate change, asteroid impacts, and the risks of war, ensuring a sustainable and peaceful future.

Mitigating Climate Collapse

The model prioritizes addressing the urgent threat of climate change, which could lead to catastrophic collapse with extreme weather, rising sea levels, and ecological damage. It advocates for global shifts to sustainable energy, environmental stewardship, and advanced technologies to reduce carbon emissions and stabilize the climate.

Additionally, the model emphasizes protecting Earth from potential asteroid impacts through early warning systems and deflection technologies, reducing the risk of an extinction-level event.

Preventing War and Conflict

War and conflict pose additional threats to global stability. The World Peace Development Corporate Model promotes diplomacy, conflict resolution, and international cooperation to prevent wars and foster peace. By redirecting resources toward solving global challenges rather than fueling conflict, we can create a more peaceful world.

Global Cooperation and Innovation

Central to the model is the idea that no single nation can address these threats alone. Global cooperation and partnerships are essential to tackling climate change, asteroid impacts, and conflict. Innovation plays a critical role, driving advancements in renewable energy, sustainable agriculture, and space defense systems.

Conclusion

The World Peace Development Corporate Model provides a strategic framework for ensuring Earth's safety. By focusing on global cooperation, innovative solutions, and proactive measures, we can protect our planet and build a sustainable, peaceful future for all.

FLOOD

DROUGHT

CATAclysm

FOOD

HOUSING

HEALTHCARE

EDUCATION

JUSTICE

SAFETY

JOB

TRADE

MANUFACTURING

 lordofworld.com

WATER

ENERGY

CLIMATE

REFORESTATION

RESOURCES

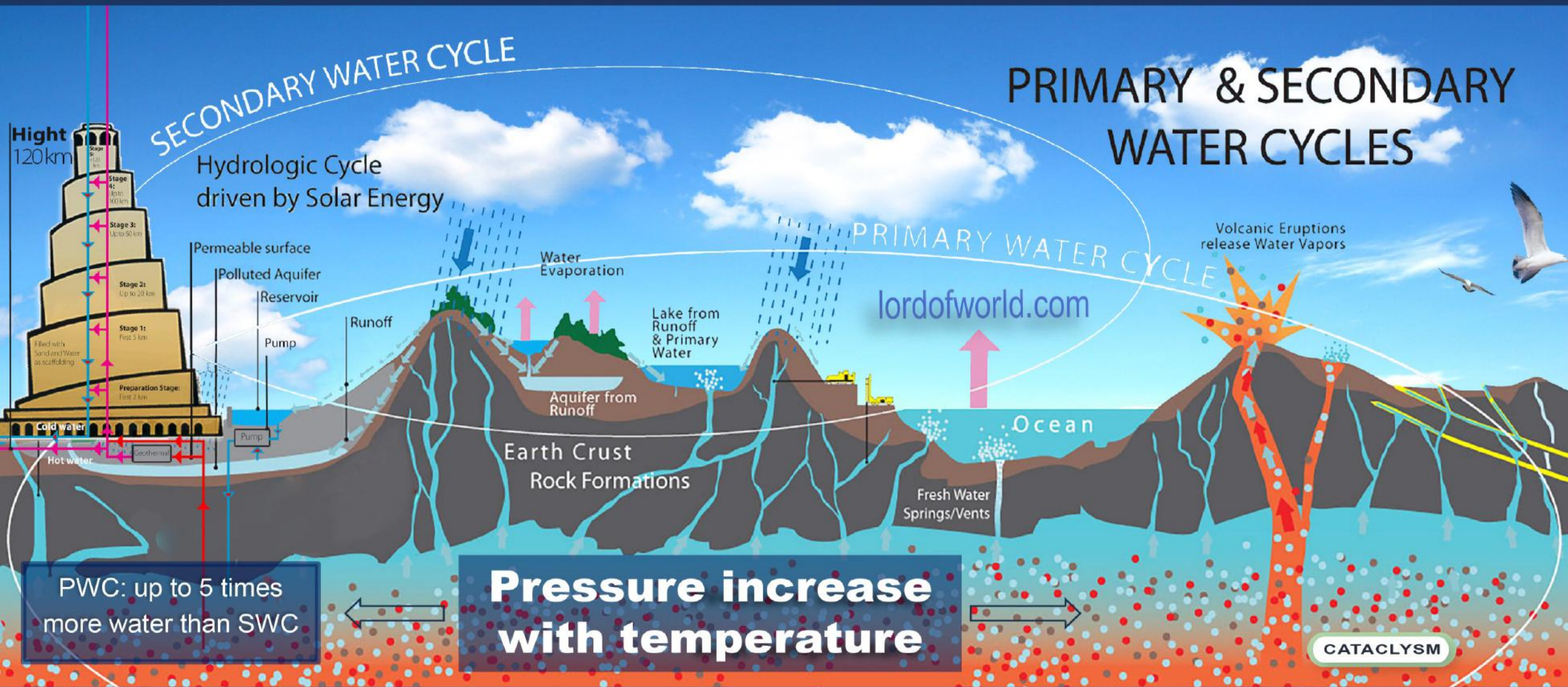
PROCESSING

COMMERCE

LOGISTICS

SPACE

TYPE I & II





By the Year
2036*
*estimate

Cyclical **Climate** **Collapse**

From the book:
History of
Cataclysm

In less than one day, the Earth undergoes tectonic plate displacement occurring at intervals between $\pm 5,000$ and $\pm 35,000$ years. The larger the interval, the stronger the destructive forces. We are at the end of a $\pm 12,000$ years buildup. This Cataclysmic event could end most human life.

Buildup Characteristics:

- Intense flooding
- Earthquakes
- Extreme heat and wildfire
- Strong winds and tornadoes
- Hailstorms and Snowstorms
- Volcanic Eruptions
- Concluding with MegaTsunami...

FLOOD

QUAKES

TSUNAMI

FOOD

HOUSING

HEALTHCARE

EDUCATION

JUSTICE

SAFETY

JOB

TRADE

MANUFACTURING

 lordofworld.com

WATER

ENERGY

CLIMATE

REFORESTATION

RESOURCES

PROCESSING

COMMERCE

LOGISTICS

SPACE

TYPE I & II



Justice and Welfare

Justice and Welfare stand as pivotal commitments in the global agenda to foster equitable societies and improve the quality of life for all individuals.

This focus highlights the importance of ensuring that justice is accessible and fair and that welfare systems are robust and inclusive.



Justice encompasses the protection of human rights, the rule of law, and the provision of equitable opportunities for all. It aims to address systemic inequalities and promote legal frameworks that uphold the dignity and rights of every individual, regardless of their background.

Welfare focuses on building support systems that enhance well-being and security, especially for vulnerable populations, by ensuring access to essential services like healthcare, education, and social protection.

Together, Justice and Welfare are cornerstones of fair, resilient, and inclusive societies. They emphasize that justice and welfare are not privileges but rights for all, fostering a world where everyone can thrive with dignity and opportunity.

FLOOD

DROUGHT

CATACLYSM

FOOD

HOUSING

HEALTHCARE

EDUCATION

JUSTICE

SAFETY

JOB

TRADE

MANUFACTURING

 lordofworld.com

WATER

ENERGY

CLIMATE

REFORESTATION

RESOURCES

PROCESSING

COMMERCE

LOGISTICS

SPACE

TYPE I & II

World Peace Development corporate model

HOME ▶ Content 1 - Content 2



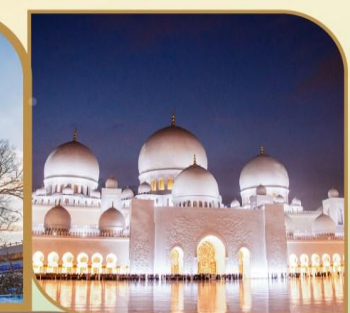
in partnership between
**LA ELAHA ELLA ALLAH
HOLDINGS LIMITED**



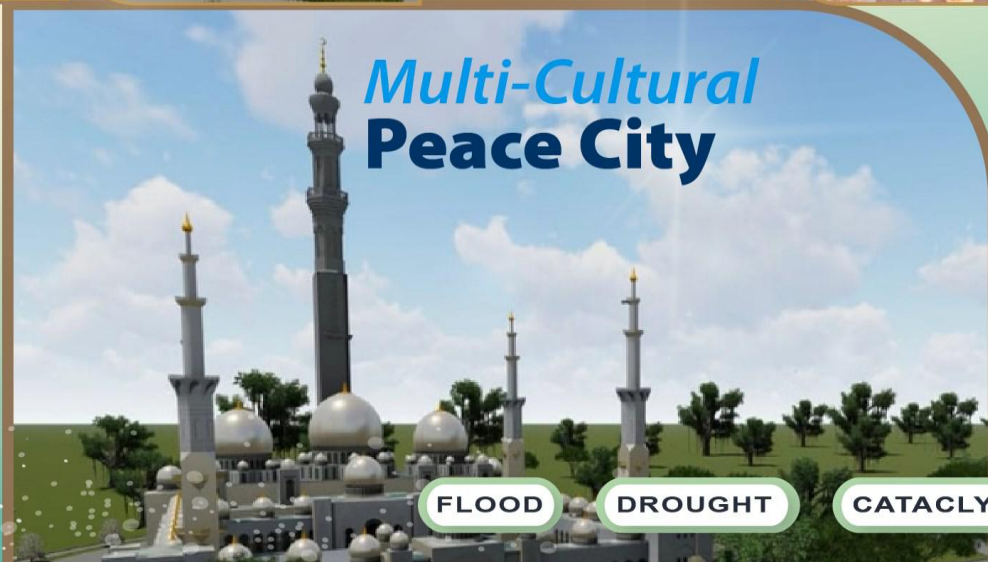
and
**WORLD PEACE
DEVELOPMENT CORPORATION**



Peace City is a visionary urban development near Vientiane, Laos, spanning 100 hectares. It aims to create a harmonious community of diverse cultures, religions, and ethnicities. Designed for body and mind rejuvenation, Peace City integrates green energy, healthy living, cultural heritage, and promotes peace and dialogue among different faiths.



Peace City, is a wellness-centered community in Laos that integrates religious and cultural harmony. It features a Buddhist temple, mosque, church, Bahá'í house of worship, and a multi-faith hall for inter-religious activities. Supported by the Lao Ethical Culture and Traditions Association and the World Peace Development Corporation, Peace City promotes health, peace, and cultural preservation.



FLOOD

DROUGHT

CATACLYSM

FOOD

HOUSING

HEALTHCARE

EDUCATION

JUSTICE

SAFETY

JOB

TRADE

MANUFACTURING

 lordofworld.com

WATER

ENERGY

CLIMATE

REFORESTATION

RESOURCES

PROCESSING

COMMERCE

LOGISTICS

SPACE

TYPE I & II



Job and Employment

Job creation and employment opportunities are critical to fostering inclusive economic growth and ensuring that everyone has the chance to contribute to and benefit from prosperity. This focus highlights the importance of creating equitable and sustainable job opportunities that cater to diverse skills and backgrounds.

Employment ensures fair wages, decent work conditions, and career development, addressing unemployment and supporting well-being. Job creation focuses on resilient opportunities through entrepreneurship, skills development, and sustainable sectors.

Together, these efforts aim to build a robust labor market, ensuring accessible employment and job creation for all, contributing to a more equitable and prosperous society.

FLOOD

DROUGHT

CATACLYSM

FOOD

HOUSING

HEALTHCARE

EDUCATION

JUSTICE

SAFETY

JOB

TRADE

MANUFACTURING



lordofworld.com

WATER

ENERGY

CLIMATE

REFORESTATION

RESOURCES

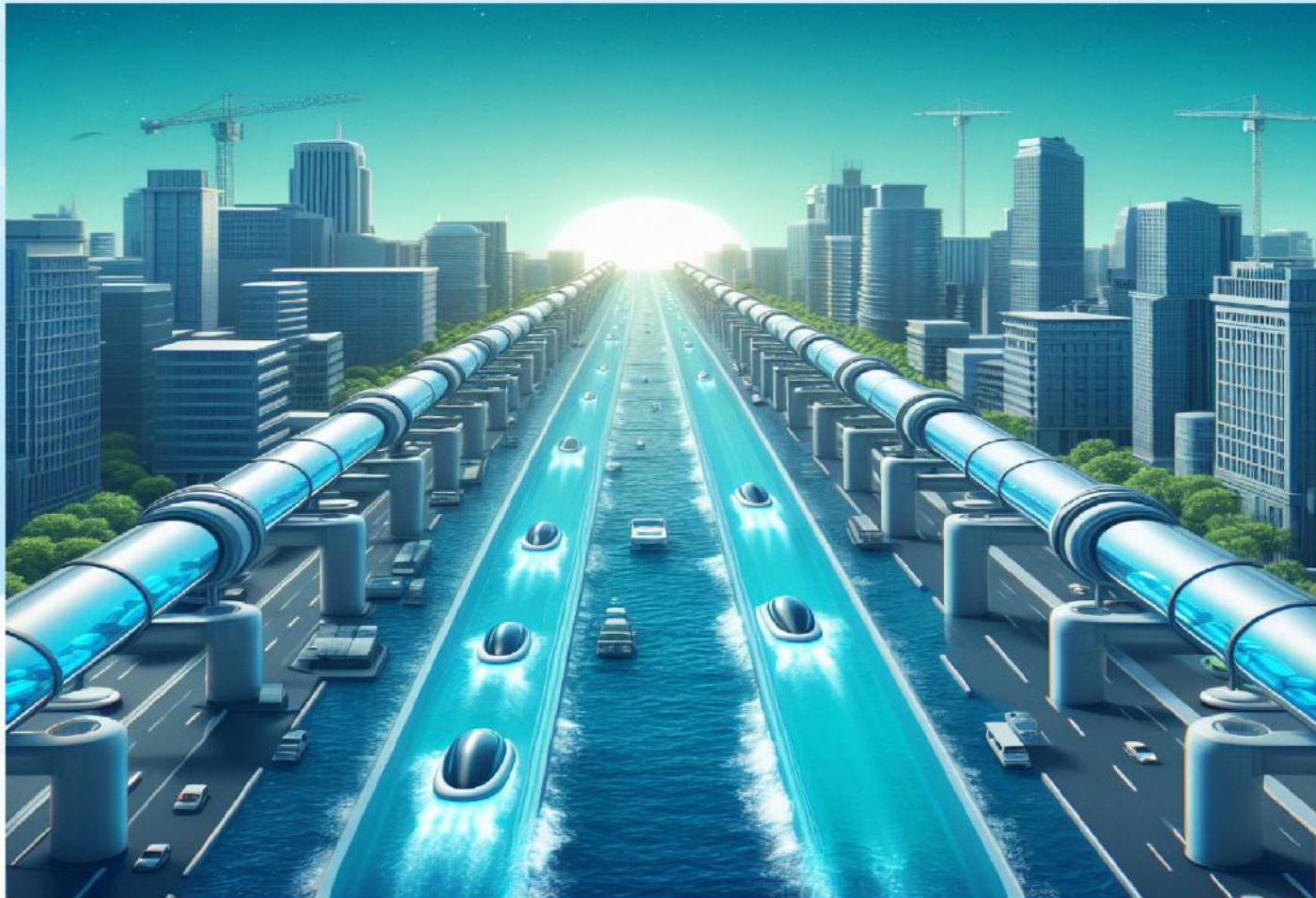
PROCESSING

COMMERCE

LOGISTICS

SPACE

TYPE I & II



The Hydroloop™ System

- clean transportation system
- Move water 365 days / year globally
- Maximize water conservation
- Transporting people and goods
- Energy: gravity and kinetic
- can generate electricity at endpoint
- Sea level control (Type I)
- Global temperature control (Type I)
- Emergency freshwater storage
- Cataclysm prevention (Type I)
- Job creation for all people

FLOOD

DROUGHT

CATACLYSM

FOOD

HOUSING

HEALTHCARE

EDUCATION

JUSTICE

SAFETY

JOB

TRADE

MANUFACTURING

 lordofworld.com

WATER

ENERGY

CLIMATE

REFORESTATION

RESOURCES

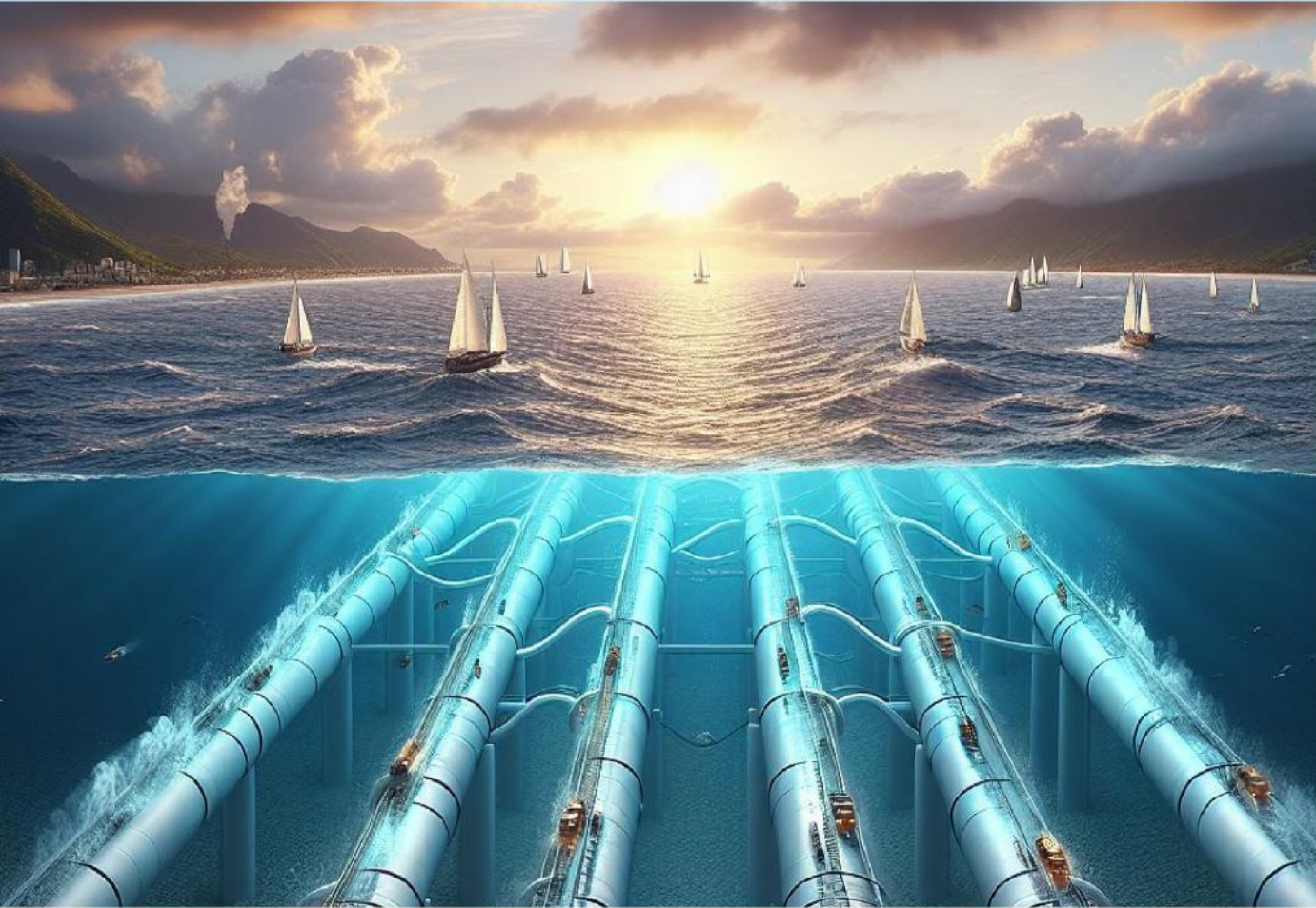
PROCESSING

COMMERCE

LOGISTICS

SPACE

TYPE I & II



The Hydroloop™ System

- Ocean heat/coldness harness
- Power gain system
- Ocean and tubes with same pressure
- Emergency freshwater storage
- Exploit the entire Planet Energy (Type I)
- Job creation for all people

FLOOD

DROUGHT

CATACLYSM

FOOD

HOUSING

HEALTHCARE

EDUCATION

JUSTICE

SAFETY

JOB

TRADE

MANUFACTURING

 lordofworld.com

WATER

ENERGY

CLIMATE

REFORESTATION

RESOURCES

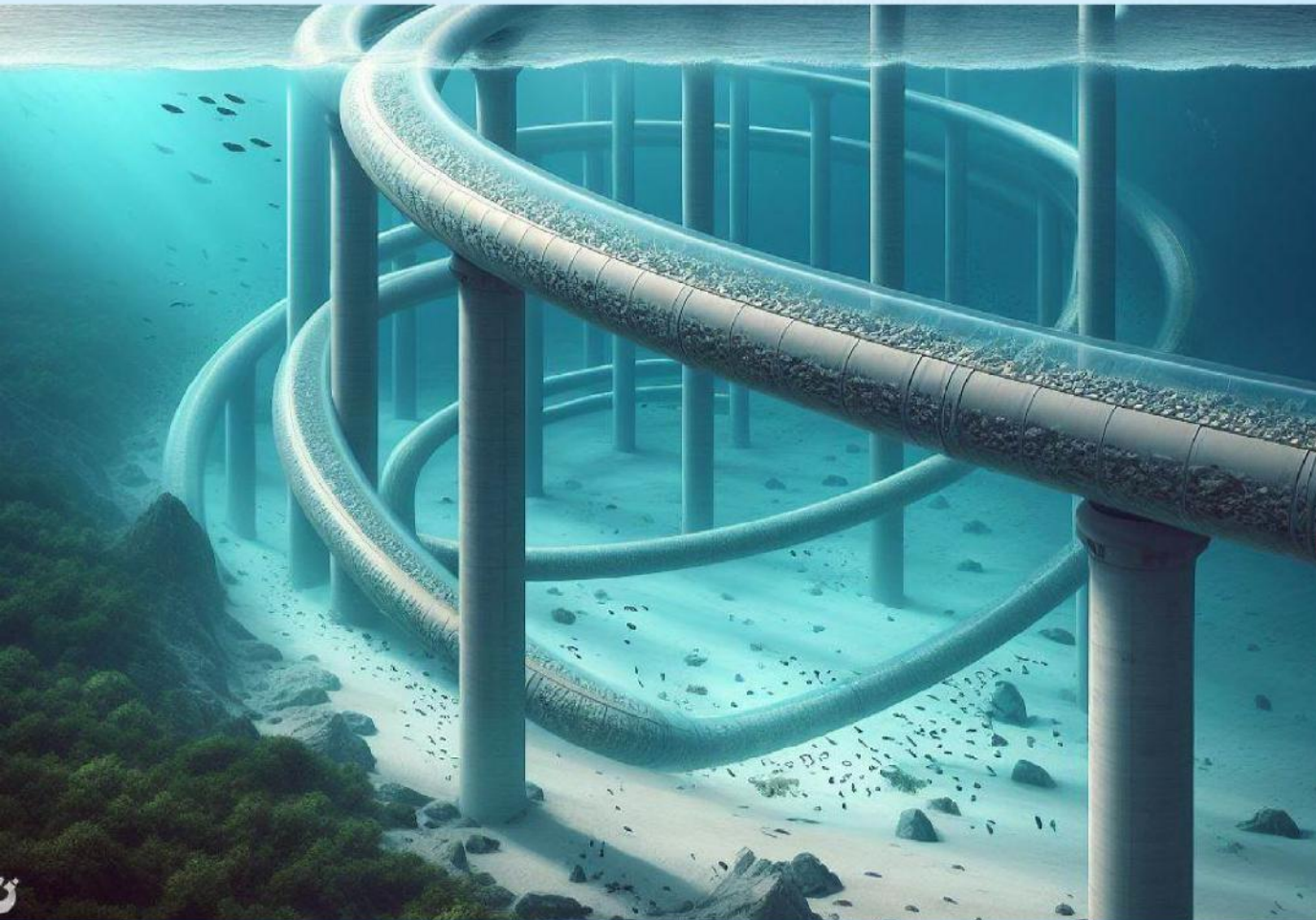
PROCESSING

COMMERCE

LOGISTICS

SPACE

TYPE I & II



First Locations

- South China Sea
- Indian Ocean

Other Locations

- Other Oceans
- Expand to exchange heat with the Arctic and Antarctic coldness.
- Job creation for all people

FLOOD

DROUGHT

CATACLYSM

FOOD

HOUSING

HEALTHCARE

EDUCATION

JUSTICE

SAFETY

JOB

TRADE

MANUFACTURING

 lordofworld.com

WATER

ENERGY

CLIMATE

REFORESTATION

RESOURCES

PROCESSING

COMMERCE

LOGISTICS

SPACE

TYPE I & II



The Hydroloop™ System

- Buried along the coastlines
- Water distribution 24/7 & emergency storage
- Heat/coldness transfer (climate regulator)
- Reduce AC energy consumption
- Serve as coastal erosion protection and extend coastlines (using desert sand)
- Job creation for all people

FLOOD

DROUGHT

CATACLYSM

FOOD

HOUSING

HEALTHCARE

EDUCATION

JUSTICE

SAFETY

JOB

TRADE

MANUFACTURING

 lordofworld.com

WATER

ENERGY

CLIMATE

REFORESTATION

RESOURCES

PROCESSING

COMMERCE

LOGISTICS

SPACE

TYPE I & II



Climate Change

Climate change refers to long-term shifts in temperature, weather patterns, and Earth's internal conditions, primarily driven by galactic cosmic rays, the Sun, and human activities like burning fossil fuels, deforestation, and industrial processes.

Climate Emergency

Historically, Earth has experienced cyclical climate patterns that span thousands of years. These cycles have led to what is understood as "Climate Collapse," a period where the buildup of energy within the planet's systems results in a dramatic and catastrophic event, known as a **Cataclysm**. These cataclysms occur in intervals ranging from $\pm 5,000$ to $\pm 35,000$ years, with the next predicted event around the year 2036.

During such cataclysms, the Earth's geographic poles have been observed to shift dramatically, moving towards the equator (Torrid Zone) in as little

as a few hours. This rapid movement unleashes tremendous forces on the planet, leading to massive tsunamis, violent storms, and widespread destruction. Historical records and geological evidence suggest that these events have caused entire continents to submerge, with the aftermath involving extreme temperature fluctuations and a lengthy period of global recovery.

Sources like "The History of Cataclysms" describe these events with vivid detail: massive walls of water and ice surge across the Earth, swallowing landscapes from mountains to plains. The turmoil of oceans and winds raged for six days, finally settling on the seventh, leaving vast areas submerged and temperatures plunging to deadly lows.

These facts underscore the critical need to understand and mitigate human impacts on the climate, highlighting the importance of global **cooperation to prevent or prepare** for future catastrophic events.

FLOOD

DROUGHT

CATACLYSM

FOOD

HOUSING

HEALTHCARE

EDUCATION

JUSTICE

SAFETY

JOB

TRADE

MANUFACTURING

 lordofworld.com

WATER

ENERGY

CLIMATE

REFORESTATION

RESOURCES

PROCESSING

COMMERCE

LOGISTICS

SPACE

TYPE I & II



WPD Commitment, Contractors and Government Obligations To adapt and implement 6 WEF challenges accepting solutions:

The energy transition is a significant structural change in an energy system. Historically, these changes have been driven by the demand for and availability of different fuels. Energy transitions can also result from the depletion of limited resources, for example: whale oil, wood, palm oil, and petroleum.

Lately, the transition to solar and wind has proven inadequate. **WPD GROUP**, Contractors, collaborators, and government obligation are to supply more

sustainable and widely available clean energy by geothermal to power **The Hydroloop™ System** to supply people with food, energy, water, and goods at a reasonable cost. To create economic growth to drive progress, to create decent jobs for all and improve living standards. To build resilient infrastructure, promote sustainable industrialization and foster innovation, to restore biodiversity and green the deserts, ...



FOOD

HOUSING

HEALTHCARE

EDUCATION

JUSTICE

SAFETY

JOB

TRADE

MANUFACTURING

 lordofworld.com

WATER

ENERGY

CLIMATE

REFORESTATION

RESOURCES

PROCESSING

COMMERCE

LOGISTICS

SPACE

TYPE I & II

World Peace Development corporate model

HOME ► Content 1 - Content 2



in partnership between
LA ELAHA ELLA ALLAH
HOLDINGS LIMITED



and
WORLD PEACE
DEVELOPMENT CORPORATION

Global **Water** crisis

Well over 4 billion people worldwide lack access to drinking water and sanitation. Many areas experience seasonal flooding, leading to excess polluted water, while other regions face prolonged droughts or extreme temperatures.

Integrated **Water** Management

Access abundant water sources, convert heat to energy, and distribute resources evenly across continents via a new clean, multi-purpose transport system. This system will support energy and food production, supply industries, agriculture, human consumption, sanitation, recreation, and contribute to heat management, pollution control, and carbon reduction. Additionally, it will enable trade with other resources, advancing humanity peacefully toward a Type One Civilization.

FLOOD

DROUGHT

CATAclysm

FOOD

HOUSING

HEALTHCARE

EDUCATION

JUSTICE

SAFETY

JOB

TRADE

MANUFACTURING

 lordofworld.com

WATER

ENERGY

CLIMATE

REFORESTATION

RESOURCES

PROCESSING

COMMERCE

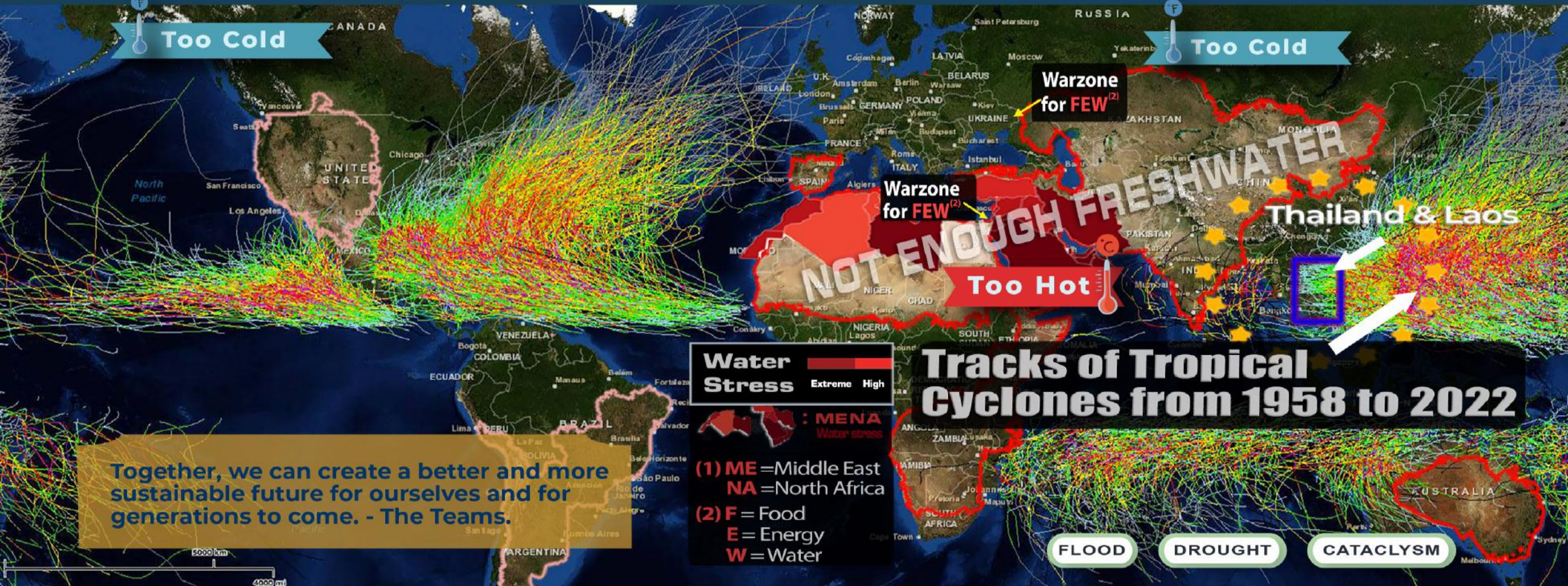
LOGISTICS

SPACE

TYPE I & II



Thailand & Laos, location for “World Peace Development” Carbon-Negative Corporate Model global initiatives for a swift progress towards a Type I Civilization.

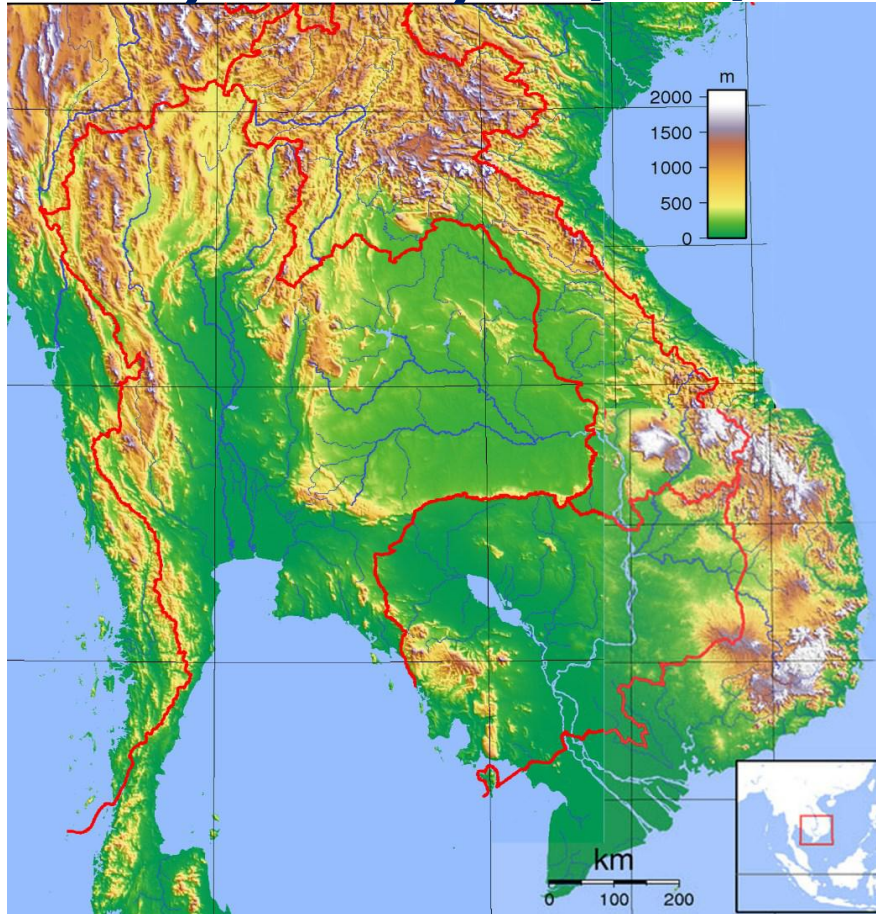


Together, we can create a better and more sustainable future for ourselves and for generations to come. - The Teams.



ASEAN Mainland deep Groundwater Primary Water Cycle (PWC)

Larger than
global oil reserve



- **Over 600 km³**
- renewable
- Pilot project in Laos
- Expand to neighbours
- until reaching MENA
- and deploy worldwide
- exportable to Space
- and Beyond

[More](#)

FLOOD

DROUGHT

CATACLYSM

FOOD

HOUSING

HEALTHCARE

EDUCATION

JUSTICE

SAFETY

JOB

TRADE

MANUFACTURING

lordofworld.com

WATER

ENERGY

CLIMATE

REFORESTATION

RESOURCES

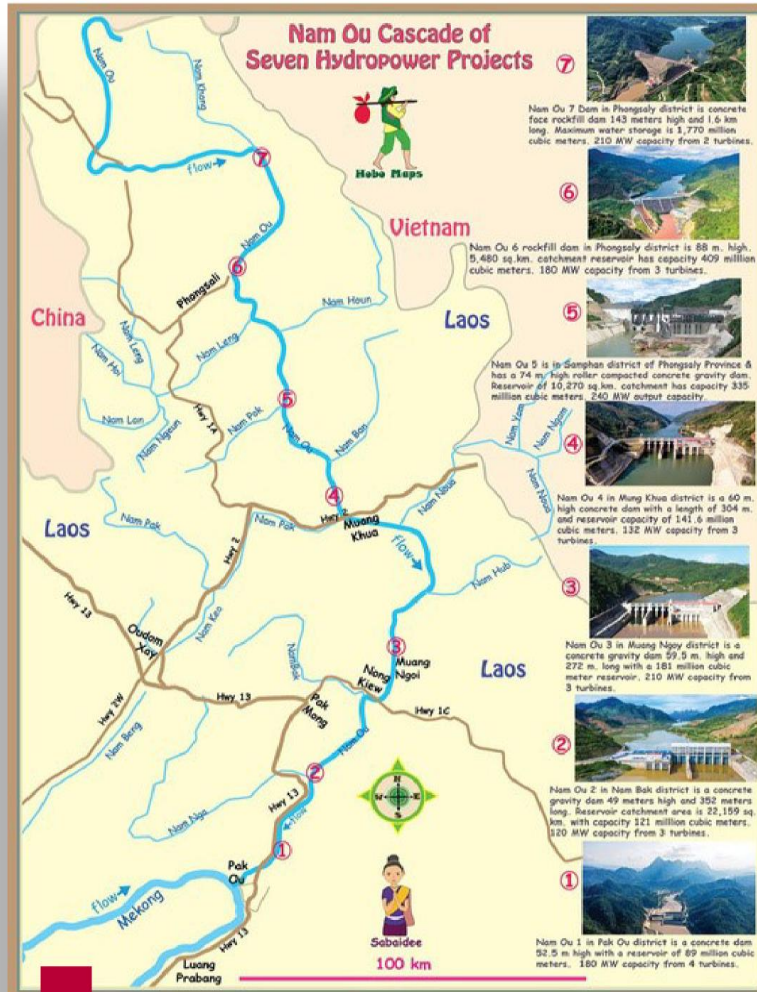
PROCESSING

COMMERCE

LOGISTICS

SPACE

TYPE I & II



Transitioning to Clean Energy: The Hydroloop™ System in Laos

The Hydroloop™ System marks a significant shift towards clean energy in Laos, offering continuous electricity and water supply 24/7 while enabling the sustainable transport of goods and people. By generating electricity at the end point, it eliminates the need for costly transmission lines, enhancing efficiency, mitigate flood, drought, and cataclysm.

The system supports Smart Farming, distributing electricity and water for growing crops and raising aquatic species, with additional uses for human consumption, industry, and recreation. Water is recycled back into the geothermal source, completing a self-sustaining cycle.

Upon the successful completion of the upgrade at Nam Ou, the Hydroloop™ System will be expanded to other major rivers in Laos. This project, aligned with the UN's Sustainable Development Goals, establishes the Hydroloop™ System as a global model, driving economic growth, enhancing tourism, advancing sustainable development practices, and mitigate Cataclysm.

FLOOD

DROUGHT

CATACLYSM

FOOD

HOUSING

HEALTHCARE

EDUCATION

JUSTICE

SAFETY

JOB

TRADE

MANUFACTURING

lordofworld.com

WATER

ENERGY

CLIMATE

REFORESTATION

RESOURCES

PROCESSING

COMMERCE

LOGISTICS

SPACE

TYPE I & II



- Develop both riverbanks
- Water by Pipelines from dam
- End-Point Energy generation
- Endless Water supply
- Coldness transfer
- Riverview properties
- Full scale smart farming
- Large scale industrialization
- Tourist attractions
- Duplicate to other rivers

FLOOD

DROUGHT

CATACLYSM

FOOD

HOUSING

HEALTHCARE

EDUCATION

JUSTICE

SAFETY

JOB

TRADE

MANUFACTURING

 lordofworld.com

WATER

ENERGY

CLIMATE

REFORESTATION

RESOURCES

PROCESSING

COMMERCE

LOGISTICS

SPACE

TYPE I & II

World Peace Development corporate model

HOME ▶ Content 1 - Content 2



in partnership between
**LA ELAHA ELLA ALLAH
HOLDINGS LIMITED**



and
**WORLD PEACE
DEVELOPMENT CORPORATION**

Prototyping of **The Hydroloop™ System** within our Smart Farming and a Geothermal plant.

The Hydroloop™ System: Driving Sustainable Growth and Job Creation
Smart Solutions for Clean Transport, Water Delivery, and Energy Production

The Hydroloop™ System, powered by geothermal energy, provides a continuous 24/7 supply of electricity and water, enabling clean transport and supporting Smart Farming operations. This sustainable system increases the production of food and resources while recycling water back into the aquifers and geothermal source.

Beyond environmental benefits, **The Hydroloop™ System** is set to create billions of well-paid, multi-generational jobs, enhance the world financial system, increasing assets, and fueling economic growth. It also offers groundbreaking opportunities in space transportation and infrastructure development, aiming for a sustainable, net-zero future by 2050.

The system's innovative design eliminates the need for high-voltage transmission lines, mitigates risks from floods and droughts, and facilitates freshwater transfer. Additionally, it supports global reforestation efforts, contributing to a resilient and sustainable future.



FLOOD

DROUGHT

CATACLYSM

FOOD

HOUSING

HEALTHCARE

EDUCATION

JUSTICE

SAFETY

JOB

TRADE

MANUFACTURING

 lordofworld.com

WATER

ENERGY

CLIMATE

REFORESTATION

RESOURCES

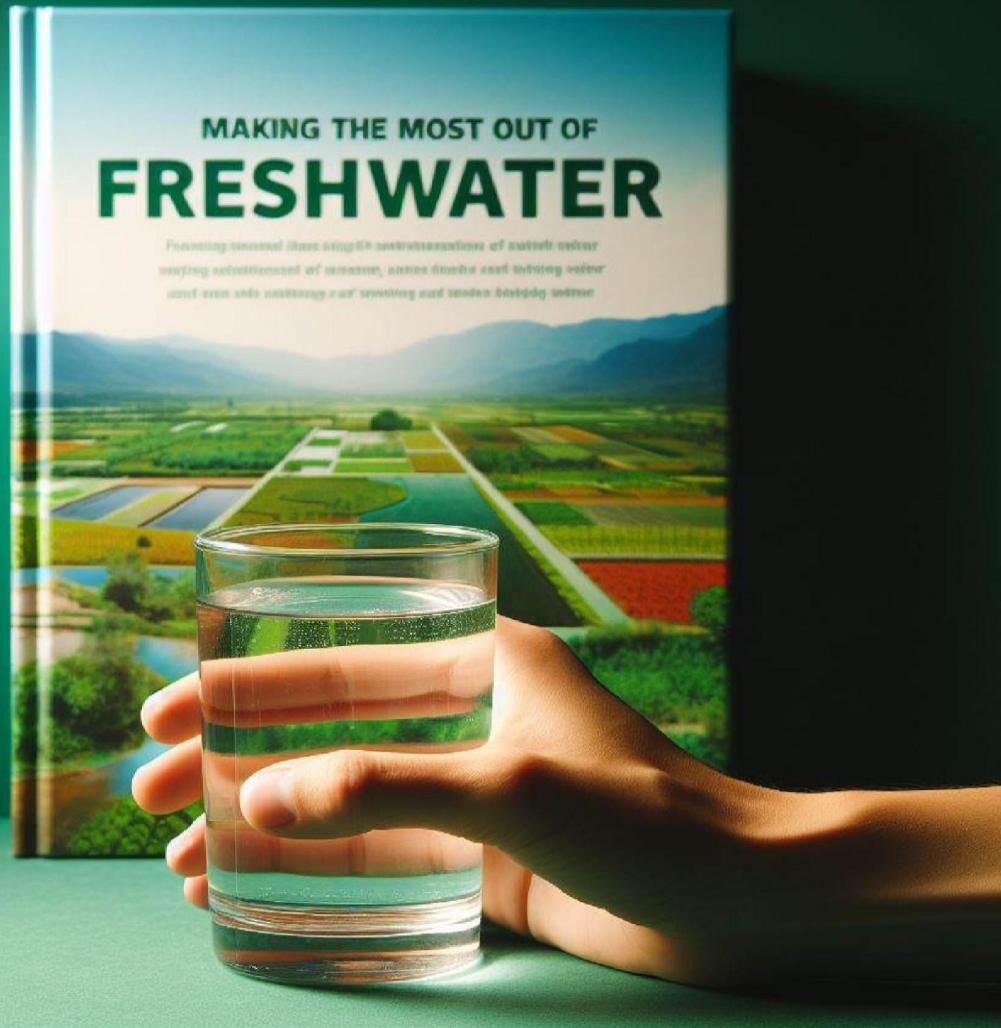
PROCESSING

COMMERCE

LOGISTICS

SPACE

TYPE I & II



Making the most out of **Freshwater** for:

Maximizing freshwater use involves optimizing public water supply, efficient irrigation, and sustainable practices in thermos/hydro power, industry, and recreation. It also includes responsible water management for domestic needs, mining, livestock, aquaculture, and transport.

By integrating these efforts, we enhance food, energy, and water security, and mitigate global risks.

FLOOD

DROUGHT

CATACLYSM

FOOD

HOUSING

HEALTHCARE

EDUCATION

JUSTICE

SAFETY

JOB

TRADE

MANUFACTURING

 lordofworld.com

WATER

ENERGY

CLIMATE

REFORESTATION

RESOURCES

PROCESSING

COMMERCE

LOGISTICS

SPACE

TYPE I & II



Mobilisation on Climate Change Commitment to avoid an irreversible tipping point:

- **Our Group**, Investors, Contractors, and Government Obligations Business White Papers are to limit global warming to 1.5 degrees Celsius and by targeting net-zero emissions by 2050:
- Using **The Hydroloop™ System** powered by The Geothermal to physically exchanging natural heat with coldness can solve droughts and floods. These two alone will solve desertification and allow the development of the extremely hot MENA (Middle East/North Africa) regions including Saudi Arabia, Kuwait, Iraq, Qatar, and

Desert-Belt corridors with the possibility to:

- Solve energy crisis, food crisis, and water stress.
- Solve climate change issues,
- Increase food production and land values,
- Plant hemp, and restore biodiversity...

With excess of food, energy, freshwater, space exploration is possible by trading desert sands and hemp with Laos.



FLOOD

DROUGHT

CATAclysm

FOOD

HOUSING

HEALTHCARE

EDUCATION

JUSTICE

SAFETY

JOB

TRADE

MANUFACTURING

 lordofworld.com

WATER

ENERGY

CLIMATE

REFORESTATION

RESOURCES

PROCESSING

COMMERCE

LOGISTICS

SPACE

TYPE I & II



Other Economic Foundations

The World Peace Development Corporate Model integrates a series of economic foundations designed to address critical global challenges and drive progress towards a sustainable and prosperous future. These foundations cover a range of essential areas, including water management, resource utilization, infrastructure development, and trade, all aimed at mitigating climate collapse and advancing towards a Type One Civilization.

Water Management involves implementing advanced strategies for the sustainable use and conservation of water resources. This includes innovative technologies and practices that ensure efficient water distribution, reduce waste, and address water scarcity, essential for maintaining ecosystems and supporting human needs.

Unlocking Finite Earth Resources focuses on the responsible extraction and utilization of limited natural resources while exploring ways to transition to infinite or renewable alternatives. This approach emphasizes maximizing the efficiency of resource use and minimizing environmental impact, paving the way for a more sustainable future.

Modern Infrastructure entails developing and maintaining advanced infrastructure systems that support economic growth and enhance quality of life. This includes smart cities, energy-efficient buildings, and resilient transportation networks that contribute to a stable and functional society.

Trade plays a crucial role in facilitating economic exchange and cooperation between regions. By promoting fair trade practices and reducing trade barriers, this foundation aims to enhance global economic stability and foster mutual benefit among nations.

Together, these economic foundations represent a comprehensive approach to addressing pressing global issues and facilitating a swift transition to a Type One Civilization. By integrating these strategies, the World Peace Development Corporate Model seeks to create a balanced and sustainable world where resources are managed wisely, infrastructure supports advancement, and trade promotes global harmony.

[RECAP](#)

[← Click for HOME](#)

FOOD

HOUSING

HEALTHCARE

EDUCATION

JUSTICE

SAFETY

JOB

TRADE

MANUFACTURING

 lordofworld.com

WATER

ENERGY

CLIMATE

REFORESTATION

RESOURCES

PROCESSING

COMMERCE

LOGISTICS

SPACE

TYPE I & II



TABLE OF CONTENTS 2

Other Business Foundations

*Necessary to Implement
The World Peace Development
Corporate Model*

✓ means PDF
completed

✓ Trade

✓ Food

✓ Energy →

Geothermal
Oil & Gas
Storage Tanks
Electricity

✓ Resources

✓ Mining

✓ Buy/Sell Resources →

Crypto
Gold
Jade
Diamond
Silver
Rare Earth

✓ Logistics

✓ Infrastructure →

Spaceport
Highway
Railway
Waterway

✓ Banking

✓ Halal Economy →

Mega-mart
Halal Cuisine
Certification
Halal Buildings

✓ Manufacturing

✓ Telecommunication

✓ Information Technology

✓ International Brands

✓ Automotive

✓ Reforestation →

Forest regreening
Deserts greening

✓ Processing

✓ Commerce

✓ Space Programs

✓ Type I & II Civilization

✓ Credits/Acknowledgement

FOOD

HOUSING

HEALTHCARE

EDUCATION

JUSTICE

SAFETY

JOB

TRADE

MANUFACTURING

🌐 lordofworld.com

WATER

ENERGY

CLIMATE

REFORESTATION

RESOURCES

PROCESSING

COMMERCE

LOGISTICS

SPACE

TYPE I & II



Trade Activities

This encompasses the import and export of a diverse range of resources and goods. These include agricultural produce, animal products, energy sources, water, and various industrial and commercial commodities.



partnering with
TOTRADE
totrade.co
36-38 Cornhill, City of London





Global Trade

Global trade systems play a crucial role in ensuring food security by enabling access to a diverse range of food sources across different regions and seasons. By facilitating the movement of food products from areas of surplus to areas of need, trade helps balance supply and demand, reducing the risk of food shortages and price volatility.

For Food Security

Furthermore, trade allows countries to specialize in producing crops and food products that they are most efficient at cultivating due to their unique climate, soil conditions, and available resources. This specialization, often referred to as comparative advantage, means that each country can focus on growing or manufacturing food items that require fewer resources and lower costs to produce. By doing so, global food resources are optimized, as countries produce food more efficiently and at a larger scale, increasing the overall availability of food worldwide.

This interconnectedness through trade also fosters innovation, as countries and businesses are motivated to improve agricultural techniques, develop new food products, and enhance food processing and preservation methods to stay competitive in the global market. The exposure to international markets encourages the adoption of sustainable practices, such as reducing waste, conserving water, and using environmentally friendly farming techniques, which are increasingly demanded by global consumers.

By promoting specialization and encouraging sustainable innovation, trade contributes to a more resilient global food system that is better equipped to withstand economic fluctuations, climate change, and other challenges that can impact food security. This resilience ensures that food remains accessible, affordable, and nutritious for populations around the world, even in times of crisis.

FOOD

HOUSING

HEALTHCARE

EDUCATION

JUSTICE

SAFETY

JOB

TRADE

MANUFACTURING



lordofworld.com

WATER

ENERGY

CLIMATE

REFORESTATION

RESOURCES

PROCESSING

COMMERCE

LOGISTICS

SPACE

TYPE I & II



Rice Import & Export

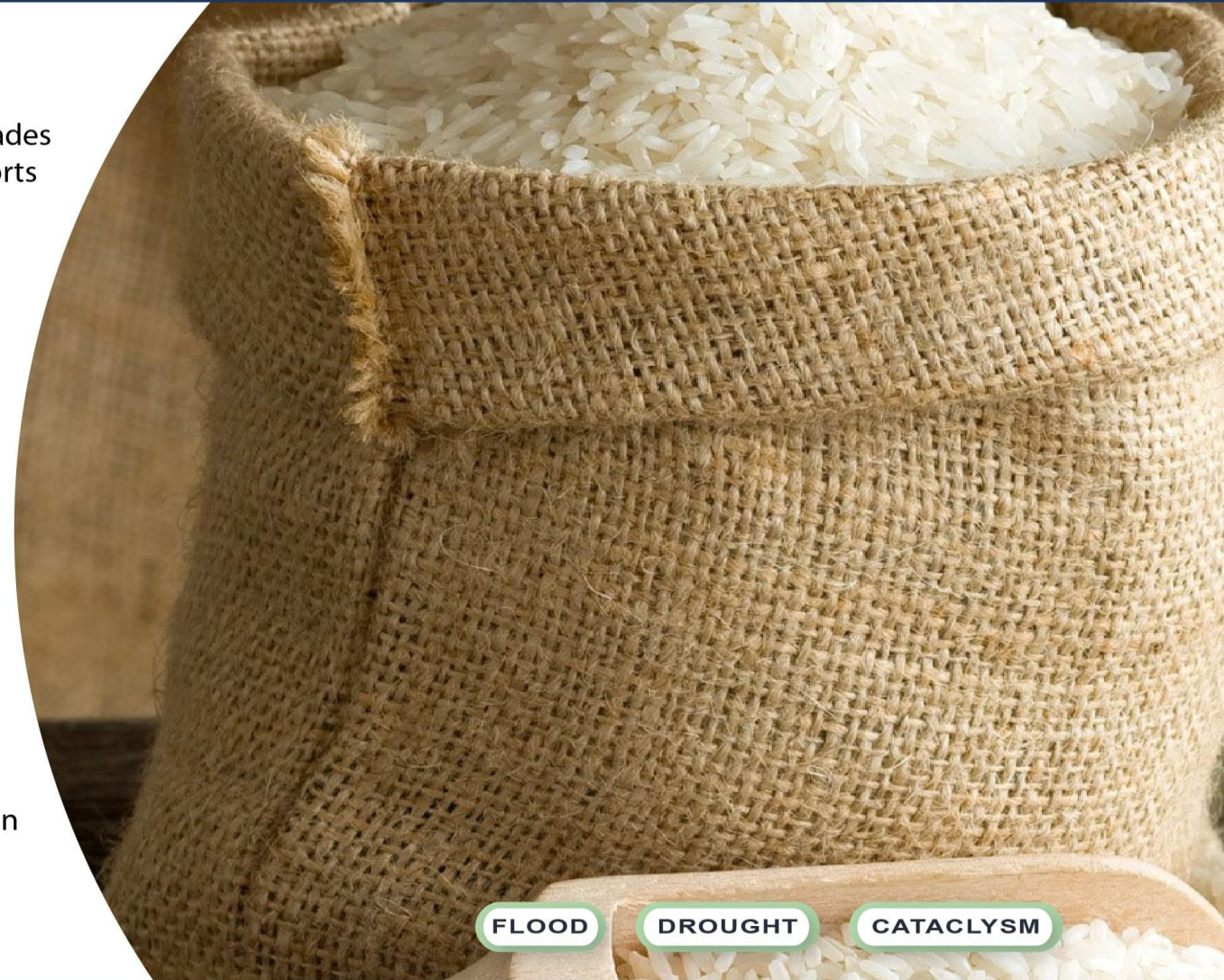
A Strategic and Profitable Business in Laos

Rice Import & Export is a new business based in Vientiane, Laos, that trades high-quality, affordable rice throughout the region. The company imports rice from Thailand and transports it to Laos using the China-Singapore Railway. Then, they export the rice to markets such as China, Vietnam, Cambodia, Malaysia and GCC using various modes of transportation.

Rice Import & Export using Laos as Central hub

The China-Laos Railway reduces transit time from Thailand to China to 15 hours by train, ensuring fresh rice. It also provides a cheaper and more reliable alternative to road and sea transportation. Laos' trade agreements with ASEAN and RCEP grant preferential tariffs for rice. China's demand for rice exceeds 4.5 million tons, valued at 2.18 billion U.S. dollars in 2020, and other countries like Vietnam, Cambodia, and Malaysia also have strong demand, especially during Nov-Feb.

Just like Durian, Rice, and other food products Import & Export are more than just a food trading business. It is an opportunity to tap into the lucrative and expanding market in the region, using Laos as a centralized hub, and to contribute to the food security and economic development of Laos and its neighbours. LDCI GROUP invites you to join and support this strategic and profitable venture to implement **"World Peace Development"** corporate model.



FLOOD

DROUGHT

CATACLYSM

FOOD

HOUSING

HEALTHCARE

EDUCATION

JUSTICE

SAFETY

JOB

TRADE

MANUFACTURING

 lordofworld.com

WATER

ENERGY

CLIMATE

REFORESTATION

RESOURCES

PROCESSING

COMMERCE

LOGISTICS

SPACE

TYPE I & II



Durian Import-Export: A Fruitful Business Opportunity in Laos

Durian Import-Export is a new and innovative business that aims to leverage the potential of Laos as a strategic location for the trade of durian, the king of fruits, in the region. Durian Import-Export is based in Vientiane, the capital city of Laos, and operates a warehouse and a distribution center near the Thanaleng Station, the main railway station in Laos.

Durian Import-Export sources high-quality and fresh durian from Thailand, the world's largest durian producer and exporter, and transports them by train to Laos, using the China-Laos Railway, a modern and efficient railway that connects Laos with China and other neighboring countries. Durian Import-Export then sells and distributes the durian to various markets as far as the MENA market using our own logistics.

FLOOD

DROUGHT

CATACLYSM

FOOD

HOUSING

HEALTHCARE

EDUCATION

JUSTICE

SAFETY

JOB

TRADE

MANUFACTURING

 lordofworld.com

WATER

ENERGY

CLIMATE

REFORESTATION

RESOURCES

PROCESSING

COMMERCE

LOGISTICS

SPACE

TYPE I & II



Durian Import-Export benefits from several advantages, such as:

Durian Import-Export is more than just a fruit trading business. It is a opportunity to tap into the lucrative and expanding durian market in the region, using Laos as a centralized hub, and to contribute to the economic development and integration of Laos and its neighbors. Durian Import-Export invites you to join and support this fruitful venture..

No	Description	Quantity (Ton / Year)	Unit Price (USD)
1	Durian Monthong AB	350,000	6,500

FLOOD

DROUGHT

CATACLYSM

FOOD

HOUSING

HEALTHCARE

EDUCATION

JUSTICE

SAFETY

JOB

TRADE

MANUFACTURING

lordofworld.com

WATER

ENERGY

CLIMATE

REFORESTATION

RESOURCES

PROCESSING

COMMERCE

LOGISTICS

SPACE

TYPE I & II

World Peace Development corporate model

HOME ▶ Content 1 - Content 2



in partnership between
LA ELAHA ELLA ALLAH
HOLDINGS LIMITED



and
WORLD PEACE
DEVELOPMENT CORPORATION

Energy access crisis

Over 1 billion people lack reliable energy access, leading to limited electricity, heating/cooling, and transportation. Seasonal shortages and reliance on unsustainable sources contribute to economic instability and hinder development, with outdated or nonexistent infrastructure exacerbating inequality and limiting growth opportunities.

Balancing Energy Transformation

According to the principles of thermodynamics, energy cannot be created or destroyed but only transformed. Sometimes, this transformation happens abruptly, such as when an exploding star releases energy that can be devastating. To address this, we need to ensure a constant, even distribution of energy, alongside maintaining water and food security, to avoid sudden, disruptive energy transfers and make energy transformation more manageable.

FLOOD

DROUGHT

CATACLYSM

FOOD

HOUSING

HEALTHCARE

EDUCATION

JUSTICE

SAFETY

JOB

TRADE

MANUFACTURING

 lordofworld.com

WATER

ENERGY

CLIMATE

REFORESTATION

RESOURCES

PROCESSING

COMMERCE

LOGISTICS

SPACE

TYPE I & II

World Peace Development corporate model

HOME ▶ Content 1 - Content 2

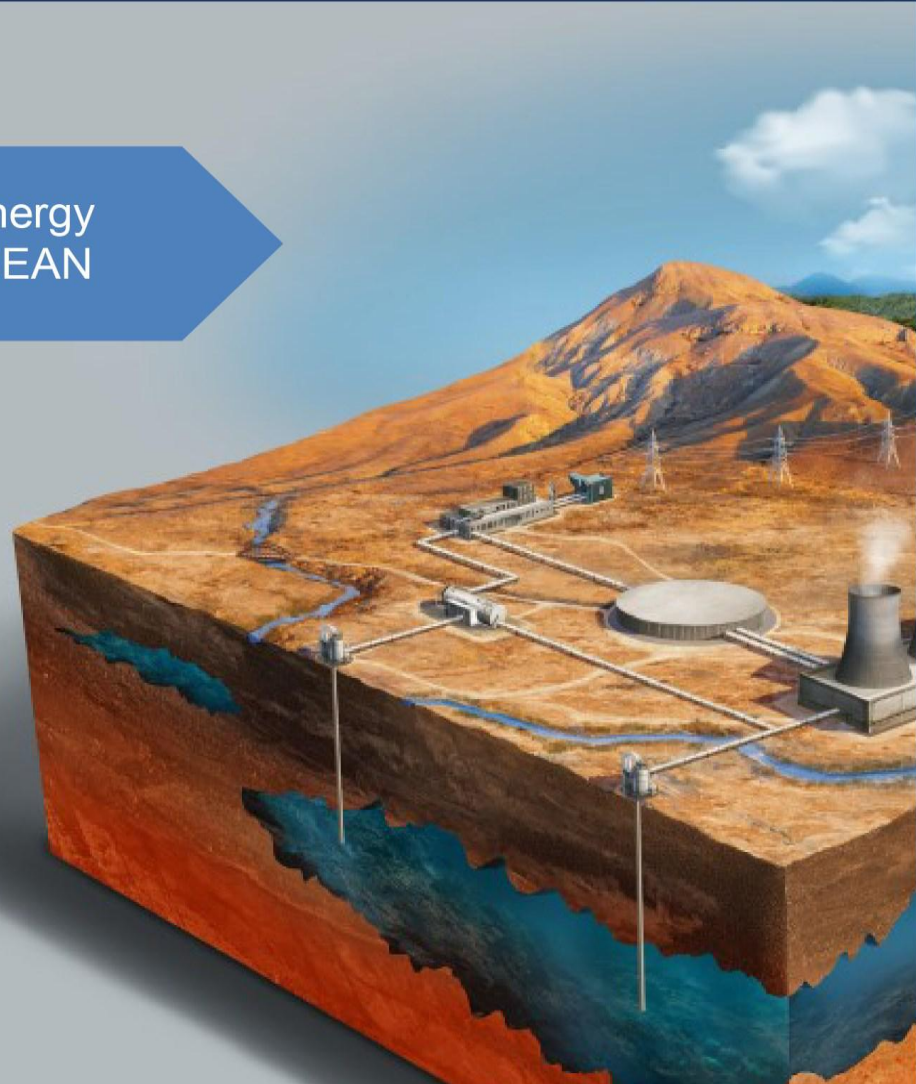


in partnership between
**LA ELAHA ELLA ALLAH
HOLDINGS LIMITED**



and
**WORLD PEACE
DEVELOPMENT CORPORATION**

Geothermal Energy Activities in ASEAN



Our Group is partnering with the World Government to develop the Advanced Geothermal Solution (AGS) as part of the energy mix and integrate it into the Hydroloop System.

Following meetings with the Director of Renewable Energy, the final agreement was signed. The study uses ASTER satellite data to evaluate the country's stratigraphic structure, fault locations, and geothermal potential, including:

- Geo-stratigraphic settings by region
- Selection of pilot areas
- Topography and land nature
- Airborne geophysical surveys
- Magnetic surface evaluations
- Geological mapping with faults and tectonic structures
- Crust movements
- Initial geothermal structure results for HDR & HSA



FLOOD

DROUGHT

CATAclysm

FOOD

HOUSING

HEALTHCARE

EDUCATION

JUSTICE

SAFETY

JOB

TRADE

MANUFACTURING

 lordofworld.com

WATER

ENERGY

CLIMATE

REFORESTATION

RESOURCES

PROCESSING

COMMERCE

LOGISTICS

SPACE

TYPE I & II



Oil and Gas Trading for Global Solutions

Oil and gas are crucial for sectors like food production, transportation, electricity generation, and water supply. However, the current market is marked by volatility, inequality, and environmental degradation, hindering the transition to a Type I civilization that can fully harness the planet's energy and resources.

A possible solution is to establish a global oil and gas trading platform, facilitating the exchange of oil and gas among countries and regions based on their needs, capacities, and commitments to transitioning to a Type I civilization. The platform would operate under the following principles:

- Transparency with urgency, impacts, compliance
- Fairness with discounts for clean energy developers and Type I programs
- Efficiency: reduce energy wastage, conservation
- Cooperation: engagement and participation of other stakeholders

The main benefits of this solution are:

- provide oil and gas for food, energy, water, and their logistics.
- to the achievement of the UNSDG
- to accelerate the transition to a Type I civilization



FOOD

HOUSING

HEALTHCARE

EDUCATION

JUSTICE

SAFETY

JOB

TRADE

MANUFACTURING

 lordofworld.com

WATER

ENERGY

CLIMATE

REFORESTATION

RESOURCES

PROCESSING

COMMERCE

LOGISTICS

SPACE

TYPE I & II



WP ENERGY

At a Glance

WP Energy is a versatile energy supplier, that connects key businesses, institutions, and communities to local and international oil and gas markets. We specialize in crude oil and refined petroleum products, providing a wide range of clients with end-to-end trading services and support.

As a market leader, we work closely with stakeholders across the energy supply chain, from refineries and suppliers to logistics providers and traders to help our clients navigate an uncertain and ever-evolving global energy landscape.

Fuel your growth with tailored energy solutions, insights, and expert guidance.

FLOOD

DROUGHT

CATAclysm

FOOD

HOUSING

HEALTHCARE

EDUCATION

JUSTICE

SAFETY

JOB

TRADE

MANUFACTURING

 lordofworld.com

WATER

ENERGY

CLIMATE

REFORESTATION

RESOURCES

PROCESSING

COMMERCE

LOGISTICS

SPACE

TYPE I & II



Exploration, FS Investment, and Construction Project for Tank Farms and Gas and Oil Pipelines in ASEAN

From the Hon La Tank Farm to the Thakhaek Tank Farm Project Site, Petro Lao Co., Ltd has surveyed and inspected the Gas & Oil Pipeline Corridor, which spans 306 km. On the Vietnam side, there are 140 km of the Gas & Oil Pipeline, passing through Kang Jak, Tien Hao, and Ming Hao. The Vietnam Government, Ministry of Communication, and the Governor of Kang Binh Province have approved this oil pipeline corridor.

The oil pipeline corridor in Laos extends 166 kilometers through four districts of Khammouane Province: Bualapha, Yommalart, Mahaxay, and Thakhaek.

A survey has been completed of land to be used for the Tank Farm Construction Project in Thakhaek District, Khammouane Province, which covers 300 hectares.



FLOOD

DROUGHT

CATACLYSM

FOOD

HOUSING

HEALTHCARE

EDUCATION

JUSTICE

SAFETY

JOB

TRADE

MANUFACTURING

 lordofworld.com

WATER

ENERGY

CLIMATE

REFORESTATION

RESOURCES

PROCESSING

COMMERCE

LOGISTICS

SPACE

TYPE I & II

World Peace Development *corporate model*

HOME ▶ Content 1 - Content 2



in partnership between
**LA ELAHA ELLA ALLAH
HOLDINGS LIMITED**



and
**WORLD PEACE
DEVELOPMENT CORPORATION**



**Joint Ventures
Strategic Partnership Agreement**

Between
World Peace Development Corporation
And
EDL-Generation Public Company

FLOOD

DROUGHT

CATAclysm

FOOD

HOUSING

HEALTHCARE

EDUCATION

JUSTICE

SAFETY

JOB

TRADE

MANUFACTURING

 lordofworld.com

WATER

ENERGY

CLIMATE

REFORESTATION

RESOURCES

PROCESSING

COMMERCE

LOGISTICS

SPACE

TYPE I & II

World Peace Development corporate model

HOME ► Content 1 - Content 2



in partnership between
**LA ELAHA ELLA ALLAH
HOLDINGS LIMITED**



and
**WORLD PEACE
DEVELOPMENT CORPORATION**

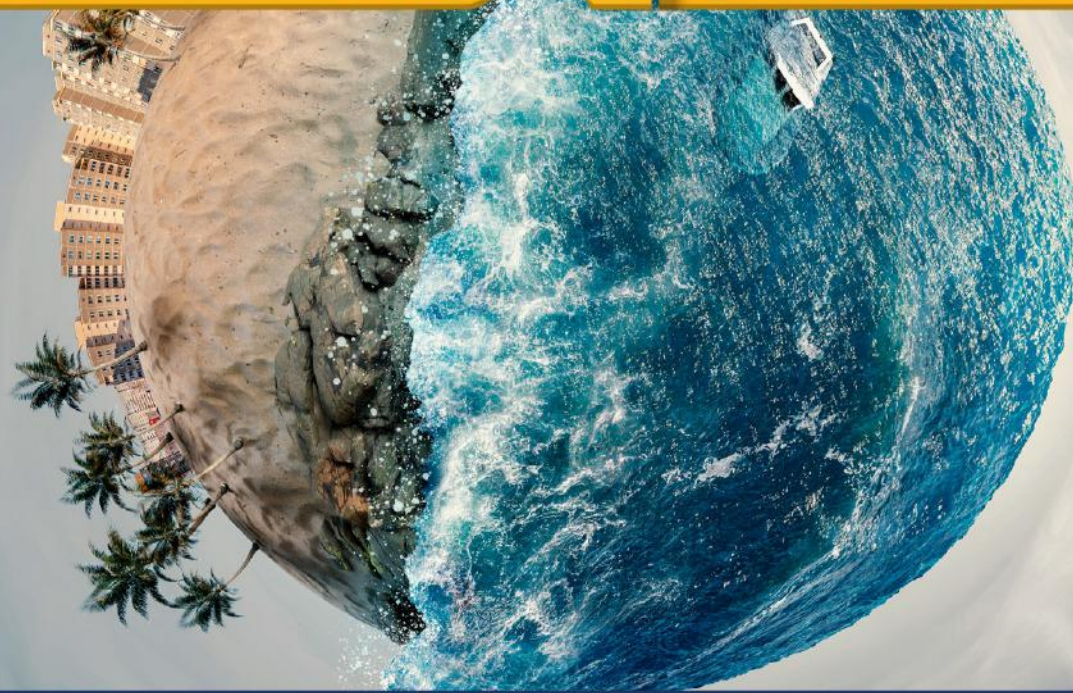
Depleting Finite Resources

Finite resources like rare Earth minerals and fossil fuels are being depleted rapidly, leading to rising costs and increased global inequalities.

Overreliance on these Earth resources also harms the environment, driving pollution and climate change. Transitioning to renewable alternatives and more efficient resource use is essential for long-term sustainability.

Unlocking Infinite Resources

To advance human civilization, we must fast-track the exploration of Earth's resources to mine nearby asteroids. These celestial bodies hold vast quantities of metals and minerals, offering virtually infinite resources. Developing asteroid mining technologies can ease the strain on Earth's finite resources and open doors to further solar system exploration.



FOOD

HOUSING

HEALTHCARE

EDUCATION

JUSTICE

SAFETY

JOB

TRADE

MANUFACTURING

 lordofworld.com

WATER

ENERGY

CLIMATE

REFORESTATION

RESOURCES

PROCESSING

COMMERCE

LOGISTICS

SPACE

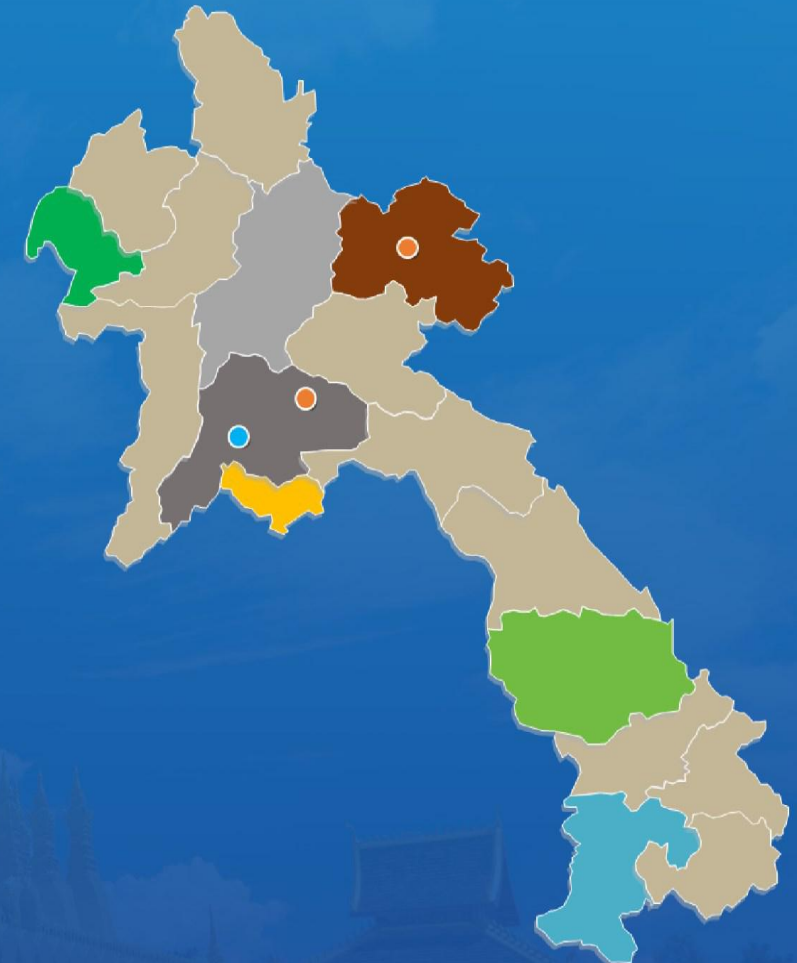
TYPE I & II



Mining Across Laos

Initially Project Site Location

1	Thathom Village, Anouvong District, Xaysomboon
2	Namon Village, Viengxay District, Huaphanh Province
3	Sanakham District, Vientiane Province



FLOOD

DROUGHT

CATAclysm

FOOD

HOUSING

HEALTHCARE

EDUCATION

JUSTICE

SAFETY

JOB

TRADE

MANUFACTURING

 lordofworld.com

WATER

ENERGY

CLIMATE

REFORESTATION

RESOURCES

PROCESSING

COMMERCE

LOGISTICS

SPACE

TYPE I & II



Our Product and Services Cryptocurrency

Buy & Sell Crypto

▶ Exchanges between fiat and crypto seamlessly

Our cryptocurrency exchange platform is a digital marketplace where traders can buy and sell cryptocurrencies using different fiat currencies or altcoins. It facilitates international trade by allowing transactions to occur beyond traditional market hours and across different time zones.



FLOOD

DROUGHT

CATACLYSM

FOOD

HOUSING

HEALTHCARE

EDUCATION

JUSTICE

SAFETY

JOB

TRADE

MANUFACTURING

 lordofworld.com

WATER

ENERGY

CLIMATE

REFORESTATION

RESOURCES

PROCESSING

COMMERCE

LOGISTICS

SPACE

TYPE I & II



Buy & Sell *Gold*

▶ Traders in gold are who we are

Buy Gold from Laos & Export: A Golden Opportunity in Laos

Buy Gold from Laos & Export is a new business based in Vientiane, Laos, that buys high-quality, certified gold from local miners and traders, and exports it to various markets in the region and beyond.



FLOOD

DROUGHT

CATACLYSM

FOOD

HOUSING

HEALTHCARE

EDUCATION

JUSTICE

SAFETY

JOB

TRADE

MANUFACTURING

 lordofworld.com

WATER

ENERGY

CLIMATE

REFORESTATION

RESOURCES

PROCESSING

COMMERCE

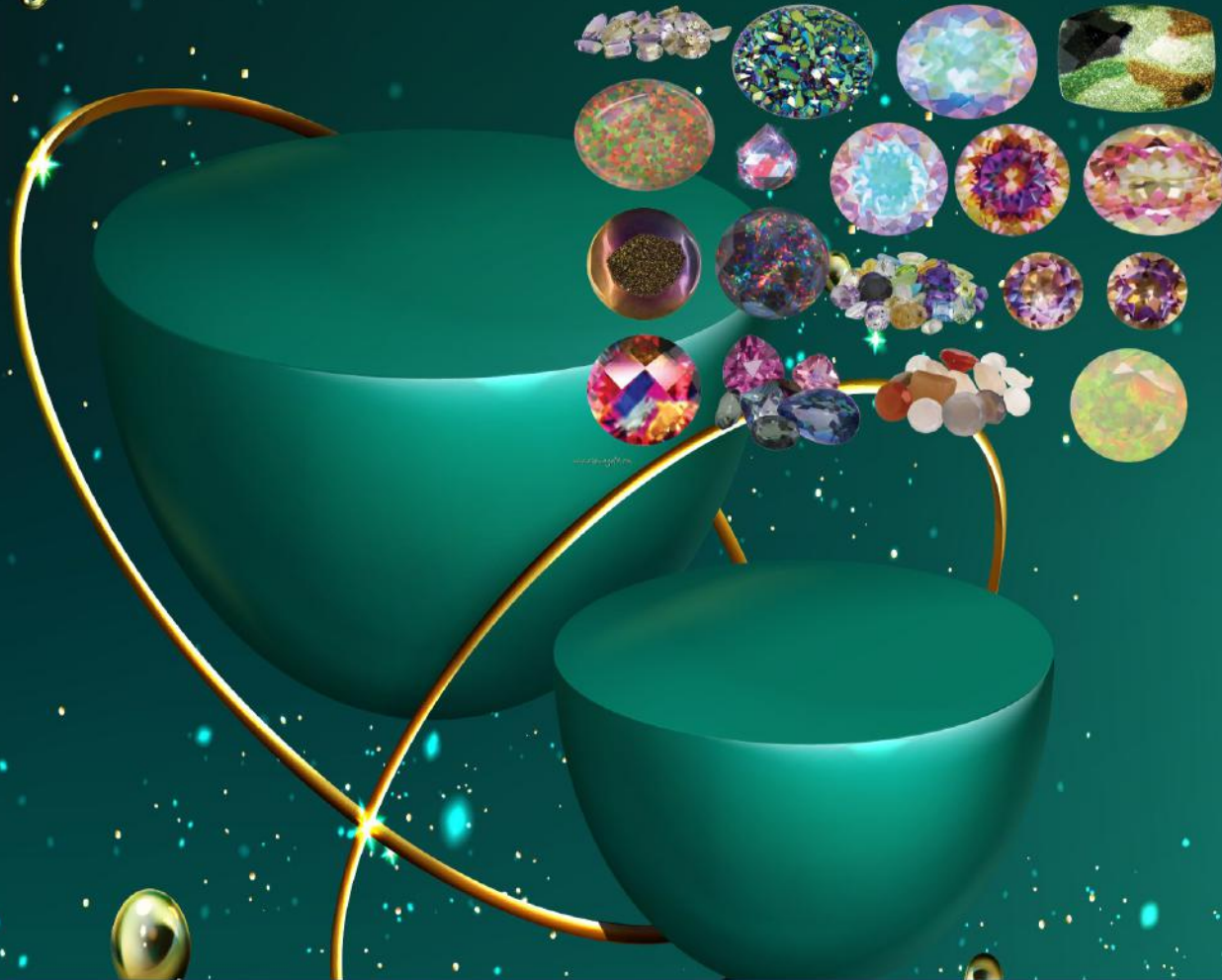
LOGISTICS

SPACE

TYPE I & II



Our Product and Services



Buy & Sell Jade

▶ We are a jade, crystals, gemstone, glass, blue traders

Buy and Sell Jade: Profitable and Diversified Business in ASEAN

Based in Vientiane, our company trades high-quality, certified jade across ASEAN, importing from Myanmar and exporting to China, Thailand, Vietnam, and Malaysia.

Key advantages:

- Abundant supply from Myanmar, with 33.8 tons produced in 2019.
- Competitive prices due to low costs and favorable exchange rates.
- Efficient transport via China-Laos Railway.
- Preferential tariffs through ASEAN and RCEP.

FLOOD

DROUGHT

CATAclysm

FOOD

HOUSING

HEALTHCARE

EDUCATION

JUSTICE

SAFETY

JOB

TRADE

MANUFACTURING

 lordofworld.com

WATER

ENERGY

CLIMATE

REFORESTATION

RESOURCES

PROCESSING

COMMERCE

LOGISTICS

SPACE

TYPE I & II



Our Product and Services Buy & Sell Diamond

▶ Trade in diamonds is what we do



Diamonds Import & Export:

A Lucrative and Diversified Business in ASEAN

Diamonds Import & Export is a new business based in Vientiane, Laos, specializing in trading high-quality, certified diamonds and other precious stones across the region. The company imports these gemstones from around the world and transports them to Laos. From there, we export the diamonds and other precious stones to markets such as China, Thailand, Vietnam, Cambodia, and Malaysia using various modes of transportation.

FLOOD

DROUGHT

CATACLYSM

FOOD

HOUSING

HEALTHCARE

EDUCATION

JUSTICE

SAFETY

JOB

TRADE

MANUFACTURING

 lordofworld.com

WATER

ENERGY

CLIMATE

REFORESTATION

RESOURCES

PROCESSING

COMMERCE

LOGISTICS

SPACE

TYPE I & II



Our Product and Services Buy & Sell Silver

▶ Our company is engaged in the trading of silver etc.



Silver Import & Export: A Lucrative and Diversified Business in ASEAN

Silver Import & Export is a new business based in Vientiane, Laos, that trades high-quality, certified silver and other metals throughout the region. The company mine silver in Laos and also imports other metals from around the world and transports them to Laos. Then, the company exports the silver and other metals to markets around the world using various modes of transportation.

FLOOD

DROUGHT

CATACLYSM

FOOD

HOUSING

HEALTHCARE

EDUCATION

JUSTICE

SAFETY

JOB

TRADE

MANUFACTURING

 lordofworld.com

WATER

ENERGY

CLIMATE

REFORESTATION

RESOURCES

PROCESSING

COMMERCE

LOGISTICS

SPACE

TYPE I & II



Rare Earth Trading

Rare Earth trading include iron ore, copper, zinc, niobium, germanium, gallium, lithium, and nickel...

Rare Earth Elements in Technology: Mobile Phones:

Neodymium, Praseodymium (magnets), Lanthanum (camera lenses), Yttrium, Terbium, Europium (displays).

PCs:

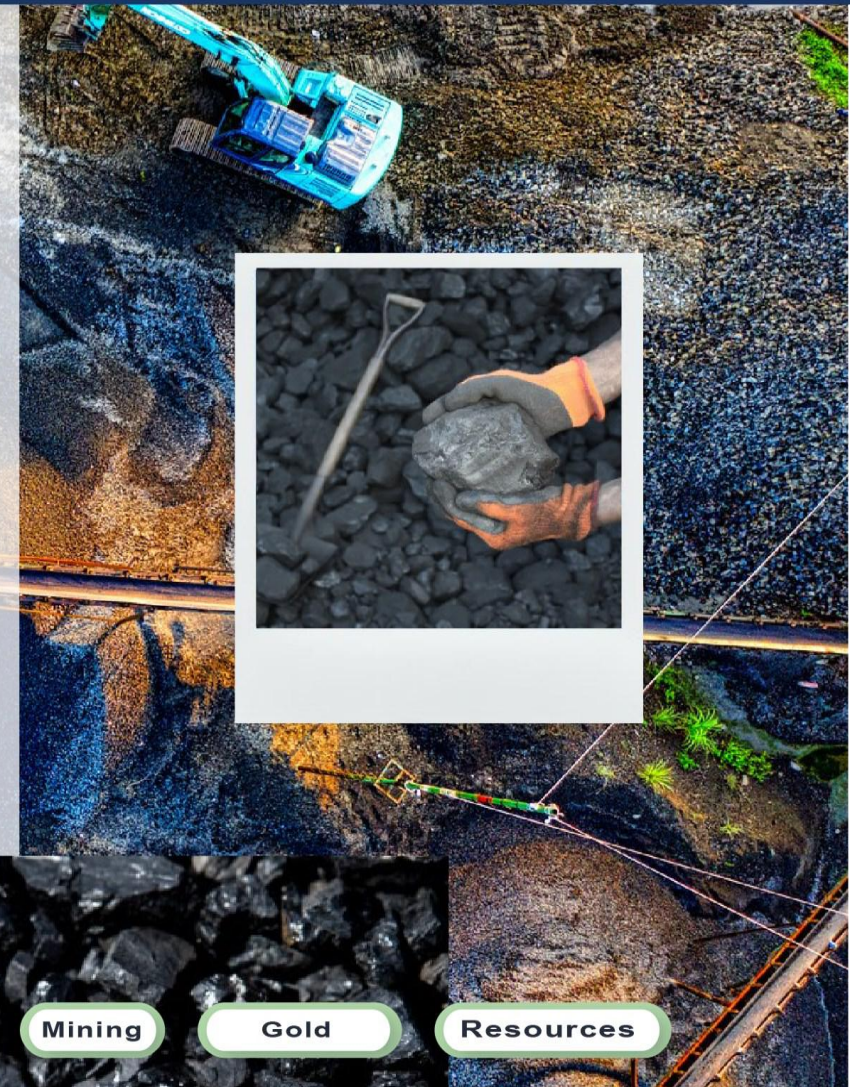
Neodymium, Praseodymium (magnets), Yttrium, Terbium, Europium (displays), Gadolinium (memory).

Cars:

Neodymium, Dysprosium, Praseodymium (motors), Lanthanum (batteries), Cerium (catalytic converters).

Batteries:

Lithium, Cobalt, Nickel (lithium-ion batteries), Lanthanum, Cerium (NiMH batteries).





Logistic Activities

We are experts in logistics, digital marketing, and software and we offer the best solutions for your business needs in the fields of:

- ✓ Oil
- ✓ Real estate
- ✓ Digital technology
- ✓ Media
- ✓ Banking
- ✓ Etc...



FOOD

HOUSING

HEALTHCARE

EDUCATION

JUSTICE

SAFETY

JOB

TRADE

MANUFACTURING

lordofworld.com

WATER

ENERGY

CLIMATE

REFORESTATION

RESOURCES

PROCESSING

COMMERCE

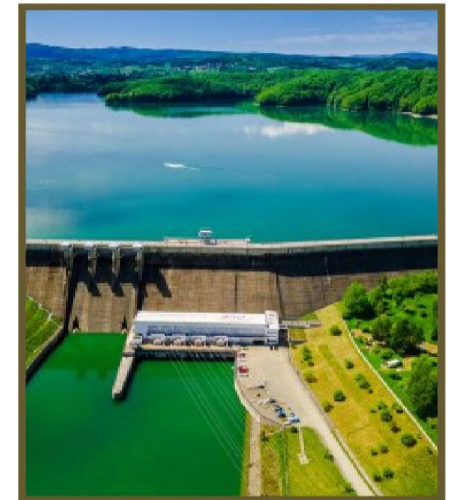
LOGISTICS

SPACE

TYPE I & II

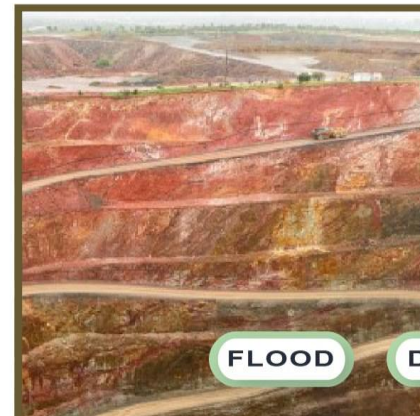


Infrastructure Activities



Hydro Power

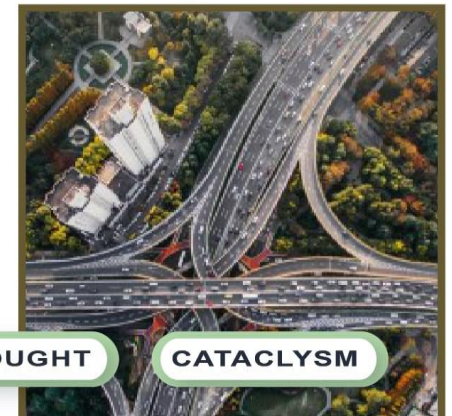
Our Infrastructure Activities comprise of the construction of housing and industrial cities, airports, stations, power plants, cement, GFRP, and mining facilities, gold, silver, and iron mines, as well as oil refineries and petrochemical plants.



FLOOD

DROUGHT

CATAclysm



FOOD

HOUSING

HEALTHCARE

EDUCATION

JUSTICE

SAFETY

JOB

TRADE

MANUFACTURING

 lordofworld.com

WATER

ENERGY

CLIMATE

REFORESTATION

RESOURCES

PROCESSING

COMMERCE

LOGISTICS

SPACE

TYPE I & II



Spaceport for Climate Collapse Readiness

The Spaceport and Climate Collapse Readiness Project safeguards vital technologies and fosters partnerships for planetary sustainability and Cataclysm readiness and prevention. The design will optimize crisis efficiency, support operations (full-scale **Cloud Seeding** to Space Exploration), and integrate with the aerotropolis to boost ASEAN's economy. **Global collaboration is essential** to building a resilient, sustainable future.

The Spaceport: Dual Mission for Earth's Future

The Spaceport's primary goal is to serve as a contingency plan for Climate Collapse if prevention fails. It will safeguard essential technologies, resources, and knowledge, ensuring the survival and repopulation of humanity after a catastrophic event.

The secondary objective is to advance humanity toward a Type I Civilization, harnessing Earth's energy and resources. The Spaceport will drive innovation, sustainable technology, and global cooperation, ensuring a resilient and prosperous future.

Climate Collapse Readiness Spaceport

[MORE](#)

[SPACE](#)

[TYPE I](#)

[FOOD](#)

[HOUSING](#)

[HEALTHCARE](#)

[EDUCATION](#)

[JUSTICE](#)

[SAFETY](#)

[JOB](#)

[TRADE](#)

[MANUFACTURING](#)

[lordofworld.com](#)

[WATER](#)

[ENERGY](#)

[CLIMATE](#)

[REFORESTATION](#)

[RESOURCES](#)

[PROCESSING](#)

[COMMERCE](#)

[LOGISTICS](#)

[SPACE](#)

[TYPE I & II](#)



Highway Construction

Laos

HIW VTE-NORTH

Vangvieng-Luangprabang,
Luangprabang-Oudomxay,
Oudomxay-Botent & Botent-Bokeo

HIW VTE-SOUTH

Bolikhamxay, Khammouane,
Savannakhet, Champasak and Attapue

HIW VTE-WEST

Vientiane – Xaysomboon,
Xiengkhuang and Huaphan



FLOOD

DROUGHT

CATACLYSM

FOOD

HOUSING

HEALTHCARE

EDUCATION

JUSTICE

SAFETY

JOB

TRADE

MANUFACTURING

 lordofworld.com

WATER

ENERGY

CLIMATE

REFORESTATION

RESOURCES

PROCESSING

COMMERCE

LOGISTICS

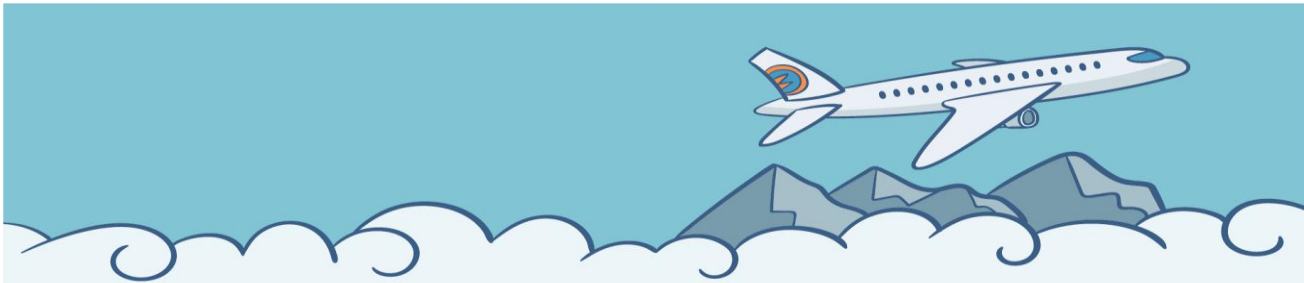
SPACE

TYPE I & II



The World Peace Development Corporate Model Railways Infrastructure, integrated Multi-Modal Hub

With flood and drought prevention



Multi-Modal Railways integrated

Around the world, floods and droughts pose significant challenges to development, trapping communities in perpetual poverty, causing enormous financial losses, and hindering progress. The Multi-Modal Railway system is designed as a contingency solution within multi-modal transport hubs, seamlessly integrating with road, water, and air travel. This system connects with the Hydroloop™ System's distribution points and the Spaceport, ensuring resilient and efficient transportation even in the face of environmental challenges.

[MORE](#)

LOGISTICS

TRADE

WATER

FOOD

FOOD

HOUSING

HEALTHCARE

EDUCATION

JUSTICE

SAFETY

JOB

TRADE

MANUFACTURING

 lordofworld.com

WATER

ENERGY

CLIMATE

REFORESTATION

RESOURCES

PROCESSING

COMMERCE

LOGISTICS

SPACE

TYPE I & II



The World Peace Development Corporate Model Maximising Water Storage and Distribution

With flood and drought prevention



Around the world, floods and droughts are significant obstacles to development, trapping people in perpetual poverty, causing enormous financial losses and restrain Type I progress.

Waterway

At the endpoint of the Hydroloop™ System, after generating electricity and meeting agricultural needs, lower-grade water supplements waterways and supports various aquaponics systems. These waterways also create attractions that draw and retain tourists through activities such as festivals, sports events, exhibitions, and more.

Simultaneously, a separate pipeline ensures the delivery of high-quality water for drinking and other essential uses, including disaster mitigation, ensuring both sustainability and resilience in the face of environmental challenges.

Multi-Modal Transport Hubs

Establish stations that serve as multi-modal transport hubs, integrating rail, road, water, and air travel connecting with the Hydroloop™ System's distribution points and the Spaceport.

[MORE](#)

LOGISTICS

TRADE

WATER

FOOD

FOOD

HOUSING

HEALTHCARE

EDUCATION

JUSTICE

SAFETY

JOB

TRADE

MANUFACTURING

lordofworld.com

WATER

ENERGY

CLIMATE

REFORESTATION

RESOURCES

PROCESSING

COMMERCE

LOGISTICS

SPACE

TYPE I & II



Overview

An ASEAN Bank will be established through a joint effort led by Dr. Rashed Osman Joher, President of the World Peace Development Corporation, in collaboration with an investor. The investment structure will involve a joint venture, where the investor is responsible for full fund mobilization, partnering with a regional financial group to achieve the bank's strategic objectives.

Establishment of Financial Center

To operate the entire World Peace Development Corporate Model, a financial center will be established, modeled after the City of London.



A Bank & ASEAN Financial Center

FLOOD

DROUGHT

CATAclysm

FOOD

HOUSING

HEALTHCARE

EDUCATION

JUSTICE

SAFETY

JOB

TRADE

MANUFACTURING

 lordofworld.com

WATER

ENERGY

CLIMATE

REFORESTATION

RESOURCES

PROCESSING

COMMERCE

LOGISTICS

SPACE

TYPE I & II



Halal Economy

This concept signifies a wide-ranging collaboration across various sectors. It encompasses the Global Halal Trade Center, Halal Complex, and numerous industries that operate under a single Halal Certification Authority for the region. These industries span a broad spectrum, including food, cosmetics, medicine, fashion, travel, finance, investment, and trade, among others.

FLOOD

DROUGHT

CATACLYSM

FOOD

HOUSING

HEALTHCARE

EDUCATION

JUSTICE

SAFETY

JOB

TRADE

MANUFACTURING

 lordofworld.com

WATER

ENERGY

CLIMATE

REFORESTATION

RESOURCES

PROCESSING

COMMERCE

LOGISTICS

SPACE

TYPE I & II



HALAL Mega-Mart

HALAL Mega-Mart is a new halal store in Vientiane, Laos that provides quality and affordable halal products to the Muslim community and others. The store only sells halal products sourced from certified suppliers and follows Islamic dietary laws. HALAL Mini-Mart respects the cultural and religious diversity of its customers and is certified by the Lao Islamic Association.

HALAL Mega-Mart's products include a variety of halal products including fresh and frozen meats, ready-to-eat meals from local halal restaurants, snacks, beverages, bakery and dairy products, household and personal care items, and educational stationery and toys for children. Halal meat and poultry: A selection of fresh and frozen chicken, beef, lamb, and fish, cut and packed according to halal standards.

FLOOD

DROUGHT

CATAclysm

FOOD

HOUSING

HEALTHCARE

EDUCATION

JUSTICE

SAFETY

JOB

TRADE

MANUFACTURING

 lordofworld.com

WATER

ENERGY

CLIMATE

REFORESTATION

RESOURCES

PROCESSING

COMMERCE

LOGISTICS

SPACE

TYPE I & II



multi-Cultural **Halal Kitchen**

HAHAL Restaurant is an innovative halal eatery offering a variety of delicious and authentic dishes from Lao, Thai, Malaysian, Indian, Chinese, and Arabic cuisines. Located in the heart of Vientiane, HAHAL Restaurant is committed to serving only halal food, prepared with fresh, high-quality ingredients in accordance with Islamic dietary laws.

Respecting the cultural and religious diversity of its customers, HAHAL Restaurant does not serve alcoholic beverages or pork products. It is certified by the Lao Islamic Association, with the halal logo displayed on its signboard and menu.

The menu features a wide range of options, including appetizers, salads, soups, curries, rice, noodles, bread, and desserts, as well as hot and cold drinks like tea, coffee, juice, and smoothies.

FLOOD

DROUGHT

CATAclysm

FOOD

HOUSING

HEALTHCARE

EDUCATION

JUSTICE

SAFETY

JOB

TRADE

MANUFACTURING

 lordofworld.com

WATER

ENERGY

CLIMATE

REFORESTATION

RESOURCES

PROCESSING

COMMERCE

LOGISTICS

SPACE

TYPE I & II



Halal certification and its important

Halal certification is crucial for our smart farming project, especially as we target MENA markets. Ensuring our products meet Islamic dietary laws, we will be certified by a recognized halal authority. This not only guarantees compliance but also upholds the highest quality standards.

Our project prioritizes sustainability and social responsibility, aiming to positively impact the environment and local communities. By leveraging advanced technologies, renewable energy, and data analytics, we provide high-quality, competitively priced produce, addressing food security and water stress in the MENA region.



FLOOD

DROUGHT

CATAclysm

FOOD

HOUSING

HEALTHCARE

EDUCATION

JUSTICE

SAFETY

JOB

TRADE

MANUFACTURING

 lordofworld.com

WATER

ENERGY

CLIMATE

REFORESTATION

RESOURCES

PROCESSING

COMMERCE

LOGISTICS

SPACE

TYPE I & II

World Peace Development corporate model

HOME ▶ Content 1 - Content 2



in partnership between
**LA ELAHA ELLA ALLAH
HOLDINGS LIMITED**



and
**WORLD PEACE
DEVELOPMENT CORPORATION**

What We Do ?

Our construction firm specializes in building residential, commercial, government, medical, tourist, sports, and recreational buildings.

We incorporate modern foreign designs and advanced technologies into our projects to ensure they are energy-efficient and up-to-date.



Construction Activities



Halal Hotel



Halal Center



Halal Restaurant



Halal Mega Mart

FLOOD

DROUGHT

CATACLYSM

FOOD

HOUSING

HEALTHCARE

EDUCATION

JUSTICE

SAFETY

JOB

TRADE

MANUFACTURING

lordofworld.com

WATER

ENERGY

CLIMATE

REFORESTATION

RESOURCES

PROCESSING

COMMERCE

LOGISTICS

SPACE

TYPE I & II



Manufacturing Activities

Our service also emphasized on cars, trucks, buses, trains, trams, ships, boats, special vehicles, aircraft, helicopters, spacecraft, defence vehicles, etc...



FOOD

HOUSING

HEALTHCARE

EDUCATION

JUSTICE

SAFETY

JOB

TRADE

MANUFACTURING

 lordofworld.com

WATER

ENERGY

CLIMATE

REFORESTATION

RESOURCES

PROCESSING

COMMERCE

LOGISTICS

SPACE

TYPE I & II

FLOOD

DROUGHT

CATACLYSM



Telecommunication and information access

We partner with leading tech companies and telcos to support the telecommunication sector, focusing on Value Added Services (VAS). We provide system integration, training, and complete outsourced services, from Network Planning and Site Acquisition to Systems Installation and Managed Services.

Our System Integration Division manages product portfolios, designs new solutions, and handles turnkey projects. Our Engineering Services Division offers end-to-end solutions in network optimization and analysis for telecom operators and OEM vendors.



FLOOD

DROUGHT

CATAclysm

FOOD

HOUSING

HEALTHCARE

EDUCATION

JUSTICE

SAFETY

JOB

TRADE

MANUFACTURING



lordofworld.com

WATER

ENERGY

CLIMATE

REFORESTATION

RESOURCES

PROCESSING

COMMERCE

LOGISTICS

SPACE

TYPE I & II



Information Technology

Access Tomorrow

We deliver cutting-edge IT solutions across industries, offering everything from turnkey deployments to innovative automation assessments. Our expertise includes system integration, enhancements, and custom applications.

Key offerings:

- **Datacenter Automation:** Streamlining mass food production, transport, and logistics. Example, MS Datacenter.
- **Biometric & Secure ID Solutions:** Advanced systems for top-tier security.
- **Mobile Payment Platform:** Facilitating cashless transactions and ticketing.
- **Branchless Banking:** Enabling remote digital banking.
- **Paperless Company Registration:** Fully digital, efficient registration processes.
- **Tax System:** Simplified tax calculation and compliance.
- **Modern Land Registry:** Efficient, transparent land record management.

We continuously adopt new technologies to provide the most effective IT solutions for our clients.



FLOOD

DROUGHT

CATACLYSM

FOOD

HOUSING

HEALTHCARE

EDUCATION

JUSTICE

SAFETY

JOB

TRADE

MANUFACTURING

 lordofworld.com

WATER

ENERGY

CLIMATE

REFORESTATION

RESOURCES

PROCESSING

COMMERCE

LOGISTICS

SPACE

TYPE I & II



Net-Zeroing together



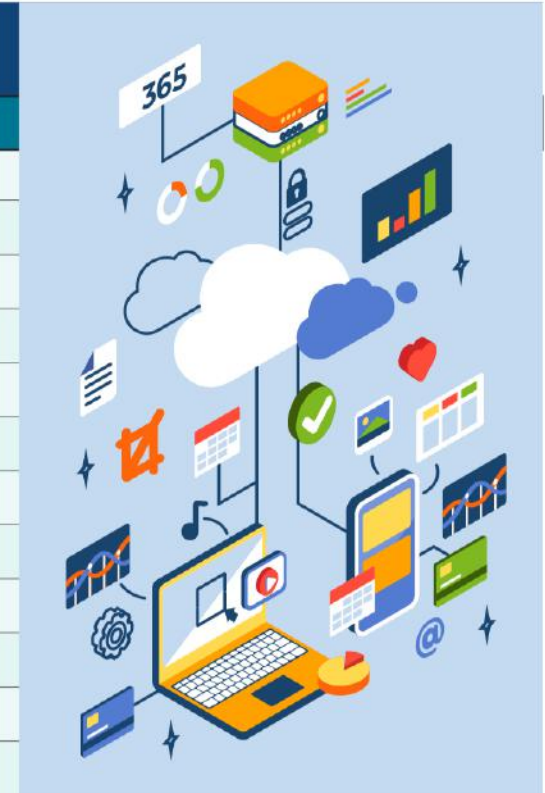
1. Collaborate - 2. Engage with others - 3. Publish

Collaborate in MS 365 Teams, Engage with Viva Engage, and Publish (internal: SharePoint, External: website)

Define The Problem/Defect

Describe just the problem not all causes, engage with the specific team to collaborate

Teams Channel	Teams Email
AGRI: Agriculture	agri@totrade.co
AHF: Animal Husbandry & Fisheries	afh@totrade.co
FP: Financial & Procurement	fp@totrade.co
FOR: Forestry for Reforestation	for@totrade.co
IC: International Cooperation	ic@totrade.co
IEC: Irrigation, Electricity, Clean Transport	iec@totrade.co
IPO: International Trading (IPO)	ipo@totrade.co
ITC: Information Technology and Cooperation	it@totrade.co
LMD: Land Management and Development	lmd@totrade.co
RD: Research and Development	rd@totrade.co
RDC: Rural Development Cooperation	rdc@totrade.co
TPP: Technical Promotion & Processing	tpp@totrade.co



Who use it?

Contact IT

pc online apps

ios apps

MS365
Teams

To Do
Loop...

Instructions

Teams

Engage

SharePoint

FOOD

HOUSING

HEALTHCARE

EDUCATION

JUSTICE

SAFETY

JOB

TRADE

MANUFACTURING

lordofworld.com

WATER

ENERGY

CLIMATE

REFORESTATION

RESOURCES

PROCESSING

COMMERCE

LOGISTICS

SPACE

TYPE I & II



International Brands

Access To Experiences

Access is at the forefront of introducing cutting-edge technology to the country. Our diverse portfolio boasts a variety of top-tier innovative products and lifestyle brands, all backed by dependable after-sales service. Our offerings range from 3D printers and photocopy machines to elevators. We are proud partners with high-end luxury lifestyle brands such as Grohe, Hansgrohe, Duravit, and Porcelanosa.

In the realm of international trading, our focus remains steadfast on fortifying existing enterprises while simultaneously pursuing an ambitious growth strategy. This dedication has enabled us to secure local franchises for globally acclaimed brands and will propel us into significant new ventures in the near future.



FOOD

HOUSING

HEALTHCARE

EDUCATION

JUSTICE

SAFETY

JOB

TRADE

MANUFACTURING

 lordofworld.com

WATER

ENERGY

CLIMATE

REFORESTATION

RESOURCES

PROCESSING

COMMERCE

LOGISTICS

SPACE

TYPE I & II



Automotive Commercial and Luxury Solution

We partner with leading international brands in the commercial vehicle market, supporting vital economic sectors. Through our subsidiary, we dominate the luxury vehicle market as the exclusive partner for top brands. Our investment in service centers ensures exceptional customer service and close connections with our clients.

FLOOD

DROUGHT

CATACLYSM

FOOD

HOUSING

HEALTHCARE

EDUCATION

JUSTICE

SAFETY

JOB

TRADE

MANUFACTURING

 lordofworld.com

WATER

ENERGY

CLIMATE

REFORESTATION

RESOURCES

PROCESSING

COMMERCE

LOGISTICS

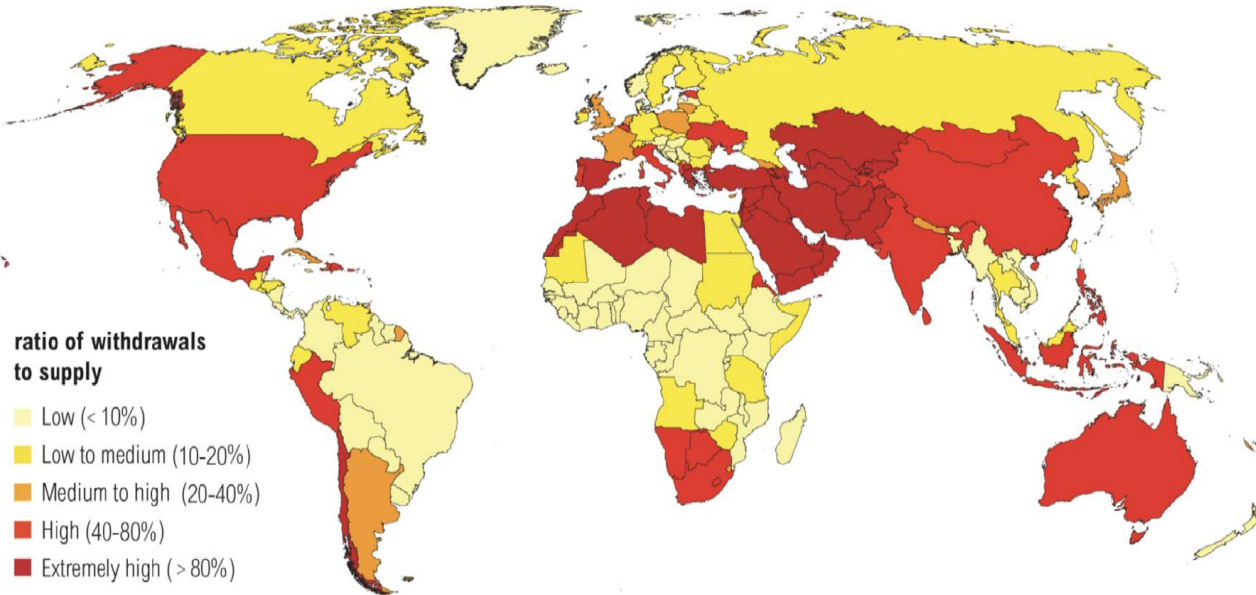
SPACE

TYPE I & II



Reforestation and Water Management for disaster resilience

Water Stress by Country



NOTE: Projections are based on a business-as-usual scenario using SSP2 and RCP8.5.

Globally, forest loss is worsening climate change, increasing flood risks, and reducing biodiversity. Forests play a vital role in absorbing and regulating water, but deforestation weakens this ability, leading to more frequent floods, droughts, and ecosystem decline.

Unlike many other reforestation efforts focused on carbon offset or biodiversity alone, the Hydroloop System stands out as the only comprehensive solution specifically designed to harness reforestation as a tool for water management. This innovative system integrates reforestation with advanced water storage and greywater recycling technologies. By using trees to enhance the natural capacity of ecosystems to regulate water, the Hydroloop System amplifies the benefits of reforestation for disaster resilience.

The Hydroloop System maximizes the potential of reforestation to protect against floods by stabilizing soil and improving water retention. Additionally, it prevents drought by ensuring water is stored and released in a controlled manner. By focusing on the water-regulating functions of forests, the Hydroloop System offers a sustainable, nature-based solution to address global water crises, helping communities build resilience against future environmental shocks.

FLOOD

DROUGHT

CATAclysm

FOOD

HOUSING

HEALTHCARE

EDUCATION

JUSTICE

SAFETY

JOB

TRADE

MANUFACTURING

lordofworld.com

WATER

ENERGY

CLIMATE

REFORESTATION

RESOURCES

PROCESSING

COMMERCE

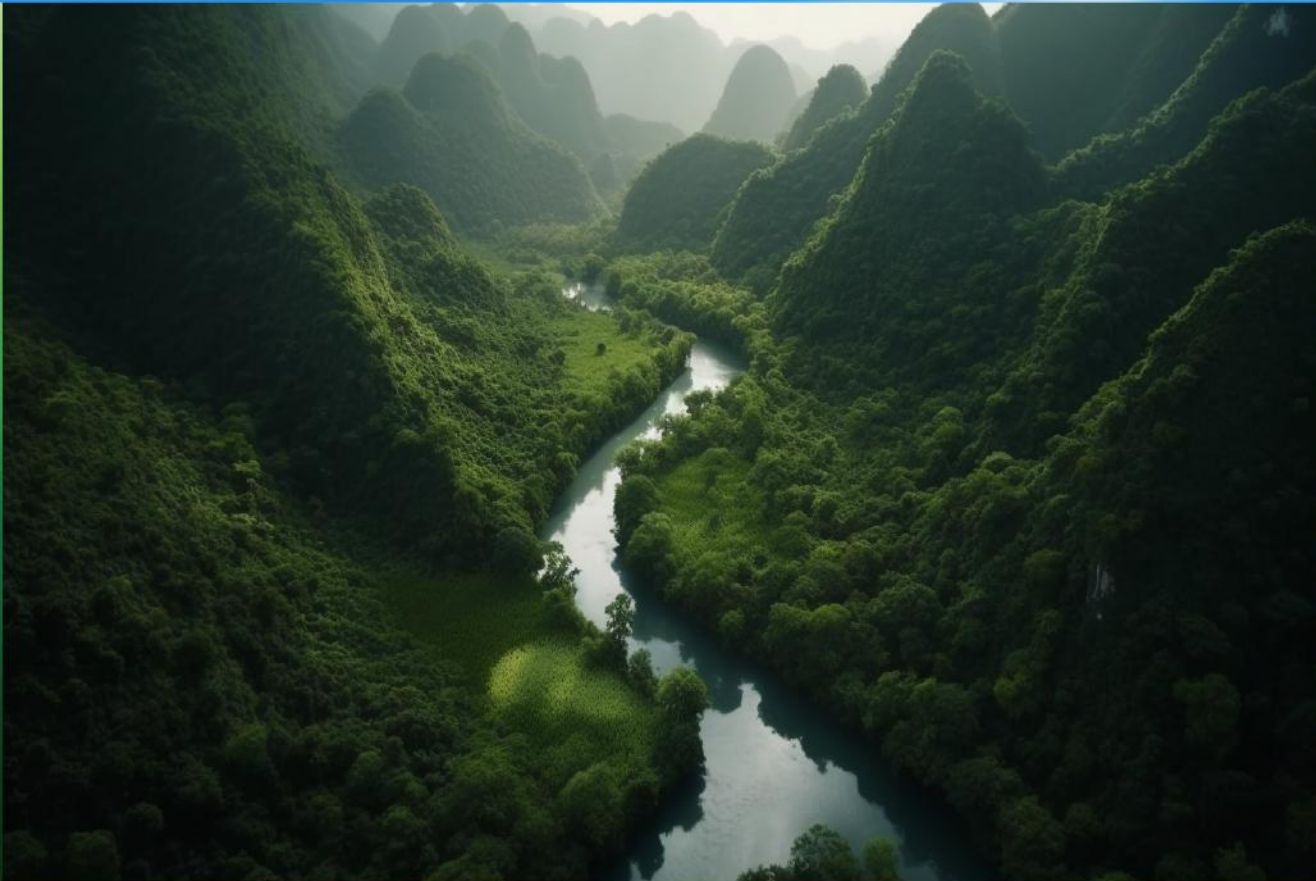
LOGISTICS

SPACE

TYPE I & II



Deforestation and the Hydroloop System as a Solution *for disaster resilience*



Deforestation caused by human activities, such as logging, agriculture, and urban expansion, has led to significant environmental degradation, resulting in soil erosion, loss of biodiversity, increased flooding, and drought. Trees play a vital role in stabilizing ecosystems by holding soil together, regulating water cycles, and enhancing water retention in the ground. Without them, the land becomes vulnerable to natural disasters like floods, droughts, and wildfires, further exacerbating global crises related to water, food, climate, and the economy.

The Hydroloop System provides an innovative, nature-based solution to counteract the negative impacts of deforestation through reforestation efforts. This system focuses on the water-regulating functions of forests to:

Prevent Flooding: Reforestation stabilizes the soil, reducing erosion and maximizing water retention. This helps manage water flow and reduces the risk of floods and cataclysm.

Prevent Drought: The Hydroloop System stores water and releases it in a controlled manner, ensuring that trees and communities have access to abundance of water even during dry periods.

FLOOD

DROUGHT

CATACLYSM

FOOD

HOUSING

HEALTHCARE

EDUCATION

JUSTICE

SAFETY

JOB

TRADE

MANUFACTURING

 lordofworld.com

WATER

ENERGY

CLIMATE

REFORESTATION

RESOURCES

PROCESSING

COMMERCE

LOGISTICS

SPACE

TYPE I & II



Desert Greening by the Hydroloop System *A Revolutionary Approach*



The Hydroloop System offers a groundbreaking method for transforming deserts into thriving ecosystems by delivering cooled water and planting trees in a sustainable way. Key elements include:

Efficient Water Delivery

Cooled water is circulated underground to keep plants hydrated, minimizing evaporation.

Optimized Soil Mix

A blend of desert sand, organic material (under 50%), clay, and rock enhances water retention and supports the growth of large trees. Surplus sand can be exported for use in The Hydroloop Spaceport as Tower Bonanza scaffolding, and for forest greening, fostering the growth of more trees to absorb and process water, thereby helping to mitigate climate-related catastrophic events.

Wind-Based Planting

Planting begins where the wind originates, creating windbreaks and improving the microclimate.

Mobile Greenhouses

The Greenhouse-on-Wheel system protects young plants, rolling along with the wind as trees establish themselves.

This innovative approach allows for large-scale reforestation, helping to green the desert and foster environmental sustainability.

FOOD

HOUSING

HEALTHCARE

EDUCATION

JUSTICE

SAFETY

JOB

TRADE

MANUFACTURING

 lordofworld.com

WATER

ENERGY

CLIMATE

REFORESTATION

RESOURCES

PROCESSING

COMMERCE

LOGISTICS

SPACE

TYPE I & II



Products Processing for a Sustainable Future *Overabundance Economy and Space Exploration*



With water, energy, and food in abundance, the next challenge is ensuring efficient and sustainable processing of products. As global resources are increasingly managed to achieve balance and abundance, the focus shifts toward developing cost-effective and energy-efficient processing plants. These facilities must adhere to sustainable practices, minimizing environmental impact while maximizing productivity.

By integrating advanced technologies, such as renewable energy sources and water recycling systems, these plants can drastically reduce their ecological footprint. Sustainable product processing not only conserves resources but also lowers costs, making goods more affordable and accessible worldwide. Efficient processing is key to maintaining a steady supply of essential goods while supporting global environmental goals.

An abundance of water, food, and energy on Earth can support space exploration. Surplus resources can power long-term missions, such as the colonization of the Moon or Mars. Effective product processing on Earth could supply essential materials for space settlements, reducing the need for costly supply chains from Earth and ensuring that space exploration is both efficient and sustainable.

FLOOD

DROUGHT

CATACLYSM

FOOD

HOUSING

HEALTHCARE

EDUCATION

JUSTICE

SAFETY

JOB

TRADE

MANUFACTURING

 lordofworld.com

WATER

ENERGY

CLIMATE

REFORESTATION

RESOURCES

PROCESSING

COMMERCE

LOGISTICS

SPACE

TYPE I & II

World Peace Development corporate model

HOME ▶ Content 1 - Content 2



in partnership between
**LA ELAHA ELLA ALLAH
HOLDINGS LIMITED**



and
**WORLD PEACE
DEVELOPMENT CORPORATION**

Commerce for the World Peace Corporate Model *A Global and Interplanetary Trading System*



WPD envisions a global commerce system integrating Earth's resources with interplanetary trade, powered by Multi-Modal Transport Hubs. These hubs connect terrestrial and orbital regions via rail, road, waterways, the Hydroloop System, and spaceports, enabling seamless global and space-bound trade.

E-commerce & Digital Trade Platforms

Commerce for the WPD Model integrates global and interplanetary trade through Multi-Modal Transport Hubs, connecting rail, road, waterways, the Hydroloop System, and spaceports for seamless movement of goods between Earth and lower orbit.

E-commerce platforms like TokTok Shop and Temu.com will facilitate global and space-based trade, enabling decentralized transactions and automated logistics across regions. These hubs will link terrestrial and orbital markets, allowing goods to be efficiently transported to space stations and orbital industries, supporting the overabundance economy on Earth.

FLOOD

DROUGHT

CATACLYSM

FOOD

HOUSING

HEALTHCARE

EDUCATION

JUSTICE

SAFETY

JOB

TRADE

MANUFACTURING

 lordofworld.com

WATER

ENERGY

CLIMATE

REFORESTATION

RESOURCES

PROCESSING

COMMERCE

LOGISTICS

SPACE

TYPE I & II

World Peace Development corporate model

HOME ▶ Content 1 - Content 2



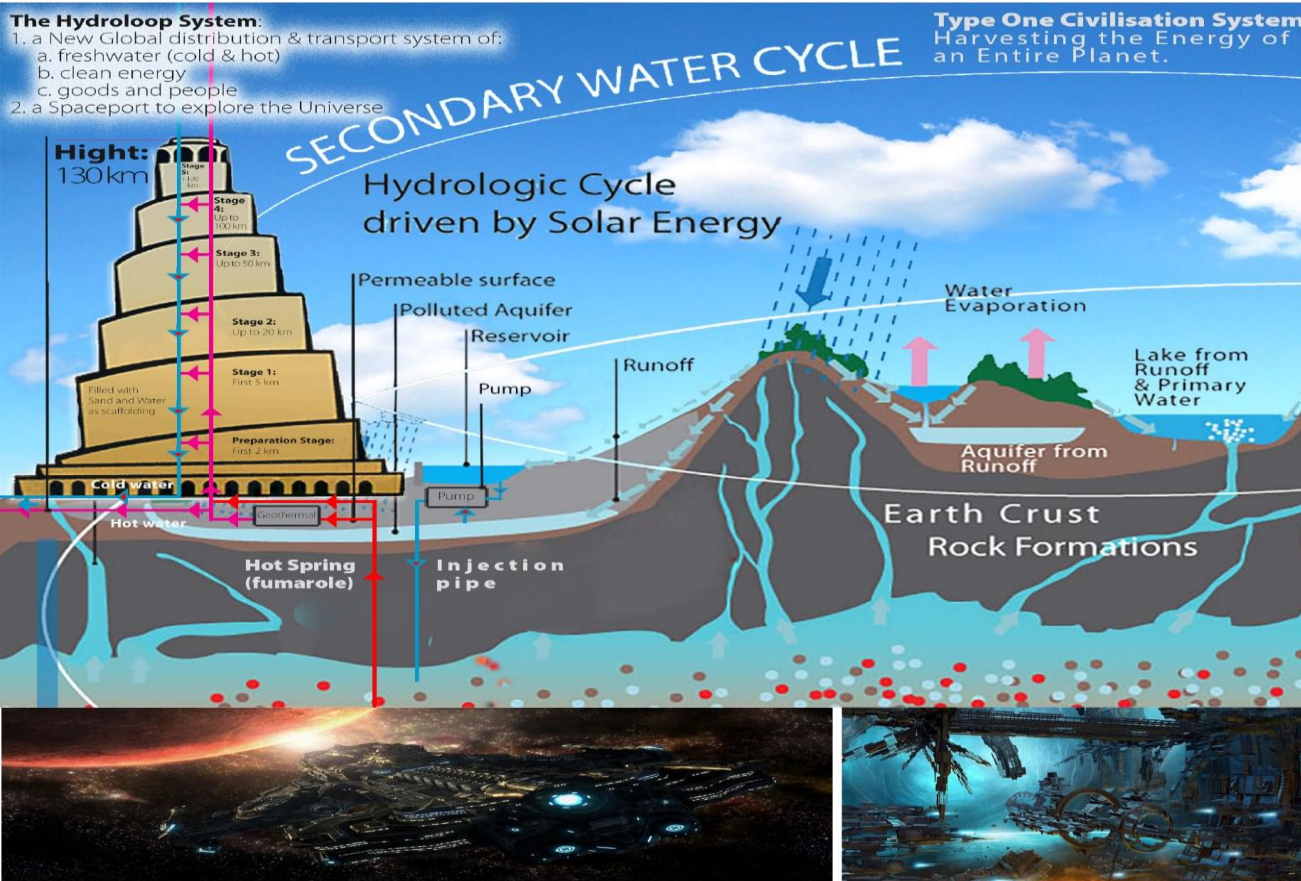
in partnership between
**LA ELAHA ELLA ALLAH
HOLDINGS LIMITED**



and
**WORLD PEACE
DEVELOPMENT CORPORATION**

Space Programs for a Sustainable Future

Revolutionize space travel while addressing energy production, water scarcity, and climate control.



The modular, scalable, and easy to maintain Tower Bonanza proposes an innovative, affordable, and sustainable way to access space by constructing a massive tower using desert sand as scaffolding. Instead of relying on rockets, this tower would physically reach the edge of space, providing continuous access to low-Earth orbit (LEO).

Energy Harvesting: The tower would harness atmospheric heat and wind energy through advanced heat exchange systems, generating electricity while balancing climate patterns.

Hydroloop System: By tapping into geothermal energy and the deep Primary Water Cycle, the Hydroloop system would circulate water for climate control, irrigation, and cooling, while also producing electricity.

Zero-Gravity Access: Platforms at the top of the tower would allow spacecraft to easily access zero gravity, enabling frequent and safe missions to LEO without massive fuel requirements.

Environmental Benefits: The tower would actively control climate extremes by dissipating heat, mitigate cataclysmic weather, and contribute to global cooling efforts.

FLOOD

DROUGHT

CATACLYSM

FOOD

HOUSING

HEALTHCARE

EDUCATION

JUSTICE

SAFETY

JOB

TRADE

MANUFACTURING

lordofworld.com

WATER

ENERGY

CLIMATE

REFORESTATION

RESOURCES

PROCESSING

COMMERCE

LOGISTICS

SPACE

TYPE I & II

World Peace Development corporate model

HOME ▶ Content 1 - Content 2



in partnership between
**LA ELAHA ELLA ALLAH
HOLDINGS LIMITED**



and
**WORLD PEACE
DEVELOPMENT CORPORATION**

World Peace Development Ultimate Corporate Model *Path to a Type I Civilization and beyond*



The World Peace Development Corporate Model aims to rapidly advance humanity to a Type I civilization, a global society that harnesses all planetary energy and operates through science and reason. This civilization will have the ability to control natural forces and ensure sustainable, unified progress.

Key Goals

Energy Mastery: Harness all clean energy sources like solar, wind, and geothermal, providing abundant power for all.
Global Cooperation: Promote worldwide unity, peaceful collaboration, and shared governance.

Technological Progress: Accelerate innovation in science, AI, and space to manage planetary systems.

Environmental Sustainability: Balance resource consumption with ecosystem preservation.
Education and Reason: Expand science-based education and rational decision-making to foster global understanding.

By focusing on these pillars, the model envisions a peaceful, sustainable future where humanity can manage planetary resources and natural forces, creating a prosperous and united world.

FLOOD

DROUGHT

CATACLYSM

FOOD

HOUSING

HEALTHCARE

EDUCATION

JUSTICE

SAFETY

JOB

TRADE

MANUFACTURING

 lordofworld.com

WATER

ENERGY

CLIMATE

REFORESTATION

RESOURCES

PROCESSING

COMMERCE

LOGISTICS

SPACE

TYPE I & II



Credits *And acknowledgement*

Creator/Writer

: man : alive : at time of writing, going by
: Phouthone-Thone: Siharath.
: copyright/copy-claim.

Teams and Departments

Research and Development
Finance Department

Sponsors/Partners:

: man : alive : at time of writing, going by
: Dr. Rashed.
: copyright/copy-claim.

Acknowledgement:

artworks: freepik.com
book: The Adam And Eve Story, The History
of Cataclysm
apps: MS 365 + copilot

Inspiration:

The failed Hyperloop
The expensive SpaceX

Personal Thanks:

Writer mother :and: father
: sisters : brother

: friends :

: and :
many more.

Mentors:

: Alan : Roscoe
: and :
many more.

