

— PART 2 —

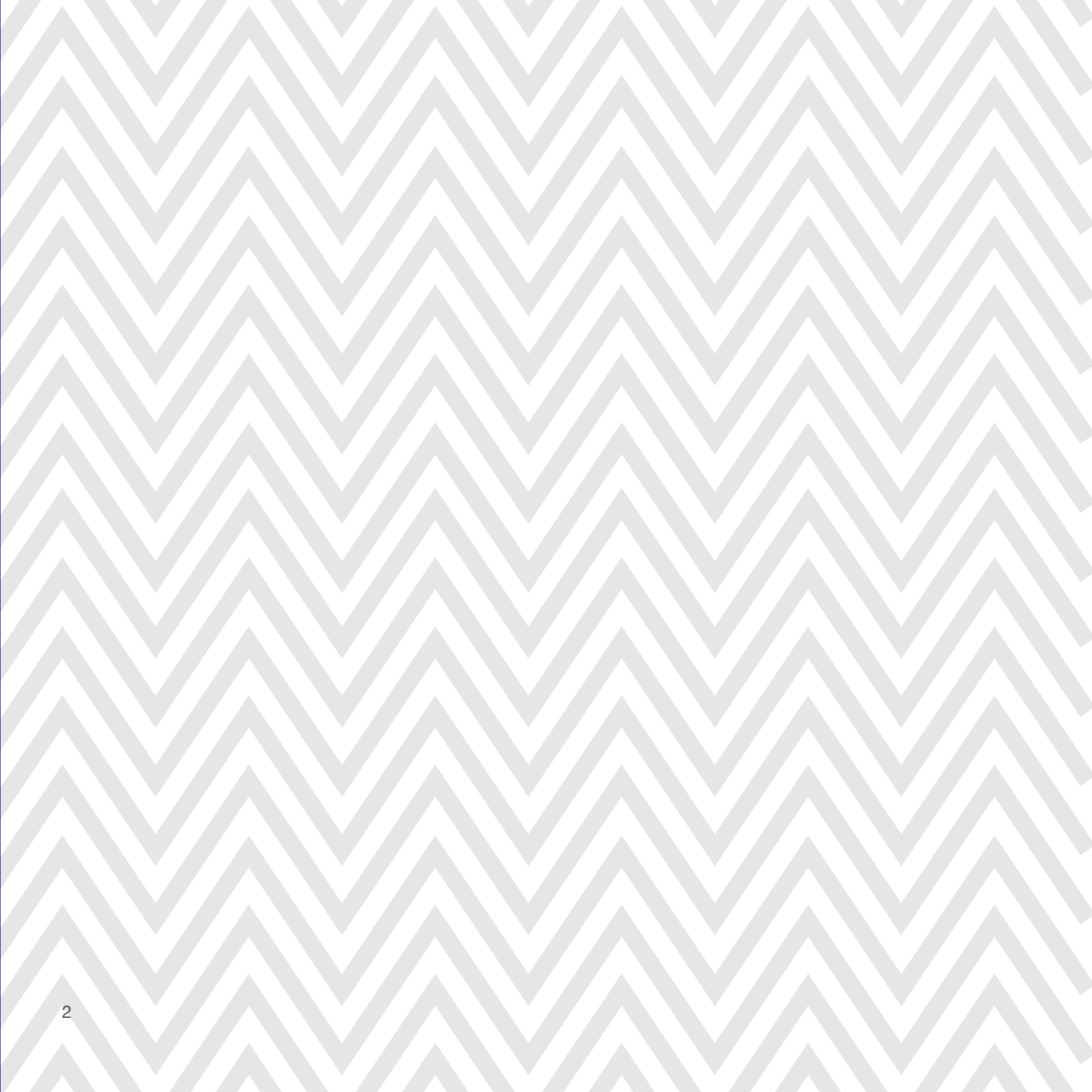
# TWIN PEAKS

**JENNY POCKLEY**

EXHIBITION AT PRIVATE & PUBLIC SPACE  
MONDAY 27<sup>TH</sup> APRIL - 13<sup>TH</sup> MAY 2020



CONTACT CHRIS CLIFFORD, GALLERY DIRECTOR:  
CHRIS@PRIVATEANDPUBLIC.COM | 07797714186 | 859093  
SOMMERVILLE HOUSE, PHILLIPS STREET, ST. HELIER, JE2 4WS



# WELCOME

The contemporary art gallery Private & Public Space is pleased to announce the 'virtual launch' of our next exhibition 'Twin Peaks - Part 2' by the internationally acclaimed British painter Jenny Pockley.

For this widely anticipated solo show the artist has produced a body of works that continue to explore themes of beauty in the natural landscape as she sublimates constantly changing light into silent, soothing and timeless icons.

Working with various layers of oil on gesso, copper and carborundum, Jenny Pockley creates her signature hazy dreamlike, tranquil, calming and meditative landscapes which demonstrate a remarkable yet effortless mastering of subtle tonal contrasts that are reminiscent of Mark Rothko or Claude Monet.

These paintings, where monumental mountains, cloud formations and seascapes are formed in diffused or minimal light and soft shadows, describe the sublime and the ethereal and are the perfect emotional balm to the difficult times we are currently living through.

Thin layers of oil paint glow on a superfine white surface giving a luminous quality that enhances any room. The colour and paint quality cultivate the viewer's emotions and assimilate memories whilst tapping us into magical times and our shared collective memory.

## '...you can always escape to a positive place in your imagination...'

The paintings also verge on the abstract as the viewer becomes absorbed by the subtle play of colours which are deeply reminiscent of the great American land artist James Turrell's "Deer Shelter Sky Space". This is the exactly the kind of uplifting art that we need in our lives right now.

TWIN PEAKS *Part 2* with Jenny Pockley is our second 'virtual exhibition' since lockdown and provides collectors with a package of fully immersive digital experiences that bring you right up close to the paintings from the comfort of your own home. These are trying times for all of us but the gallery will continue to find innovative ways to connect with the public whilst maintaining business continuity.

Jenny Pockley's paintings are so beautiful that they instantly provide great joy and calm in equal measure. To own one will mean that you can always escape to a positive place in your imagination and help to punctuate the temporary mundanity of lockdown isolation.

With so much time spent at home I feel it is vitally important that we do all we can to make our environments as stress free and meditative as possible and so I am delighted that one of Britain's pre-eminent mid-career female painters has agreed to show her work here in Jersey. It is a boost for us all.

**Chris Clifford** (BA HONS)

Gallery Director,  
*Private Public Space*



# Jenny Pockley

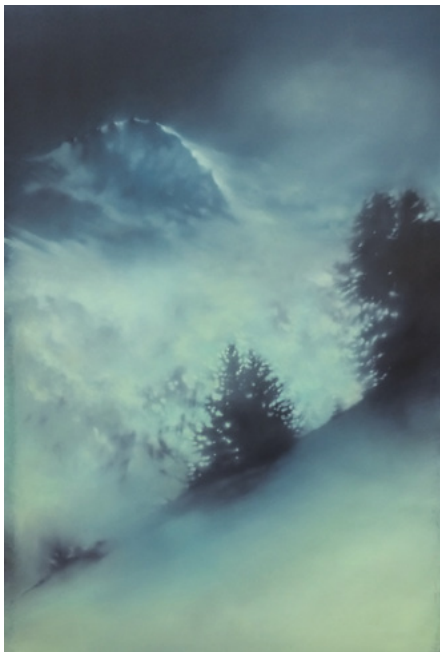
Born England, 1972

Jenny Pockley now lives and works in Rye, East Sussex, after completing her studies at the Royal Academy Schools in London. Following her graduation the artist has enjoyed unrivalled success with six sell out shows in the UK and international exhibitions in Europe, America and China.

Since 2012 the artist has worked on major corporate, private and museum commissions in New York, L.A., London, Barcelona, Kazakhstan, Melbourne, Macau, Hong Kong, Tokyo and Dubai and most notably produced 12.4 x 4m oil painting for the Hilton Group which is now hanging in the reception of the Waldorf Astoria.

Jenny Pockley has also received a number of esteemed scholarships and awards, including the Landseer Scholarship, the Worshipful Company of Painters Bursary, the Leverhulme Trust Scholarship, the David Murray Travel Scholarship, and the Elizabeth Greenshields Foundation Award. This is the first time she has exhibited in the Channel Islands.





*Alpine-1*  
Oil on sandpaper, 125 x 90cm  
**£4,800+GST**





*Breaker-study*  
Oil on copper, 23 x 28cm  
**£900+GST**



*Surf*

Oil on Canvas, 150 x 160cm

**£12,000+GST**





*Breaker*  
Oil on copper 40 x 50cm  
**£2,300+GST**



*Alpine Ombre*  
Oil on Canvas, 150 x 120cm  
**£10,000+GST**



*Mountain*  
Oil on Sandpaper, 125 x 90cm  
**£4,800+GST**



*Exposure*  
Oil on canvas 135 x 120cm  
**£9,000+GST**



*Drift (pink) study*  
Oil on copper 23 x 28cm  
**£900+GST**



*Cumulus (Paynes Grey) Study*  
Oil on copper 23 x 28cm  
**£900+GST**



*Snow blown*  
Oil on Canvas, 100 x 120cm  
**£7,000+GST**



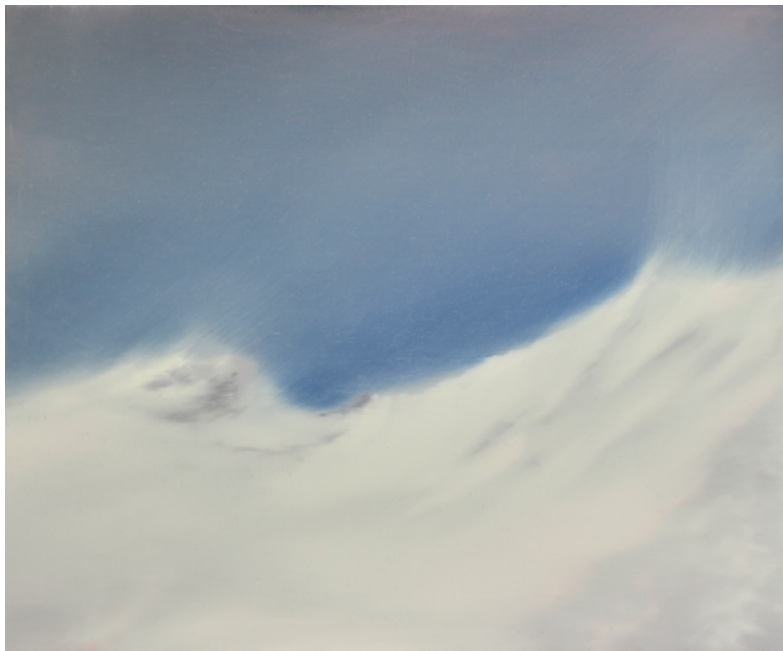
*Sea Surf*  
Oil on copper, 40 x 50cm  
**£2,300+GST**



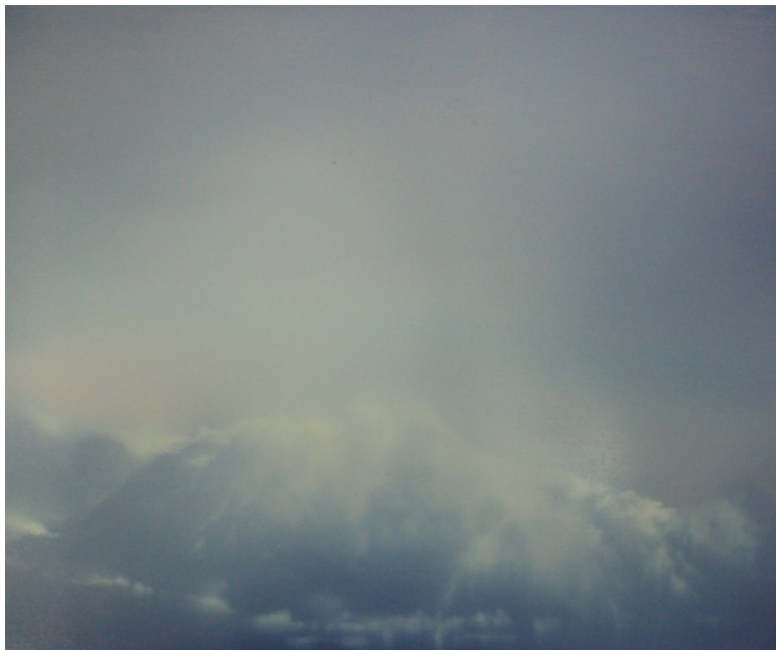
*Night Sea study*  
Oil on copper 23 x 28cm  
**£900+GST**







*Wind Blown study*  
Oil on copper, 23 x 28cm  
**£900+GST**



*Snow-topped mountain study*

Oil on copper 23 x 28cm

**£900+GST**



*Shore*  
Oil on canvas 135 x 150cm  
**£11,000+GST**



[www.privateandpublic.com](http://www.privateandpublic.com)

[chris@privateandpublic.com](mailto:chris@privateandpublic.com) | 07797714186 | 859093

Sommerville House, Philips Street, St. Helier Jersey JE2 4SW