

CA  
TA  
LO  
GUE



COLLECTION  
AUTUMN  
WINTER  
2024/25



# *NEW* *COLLECTION*

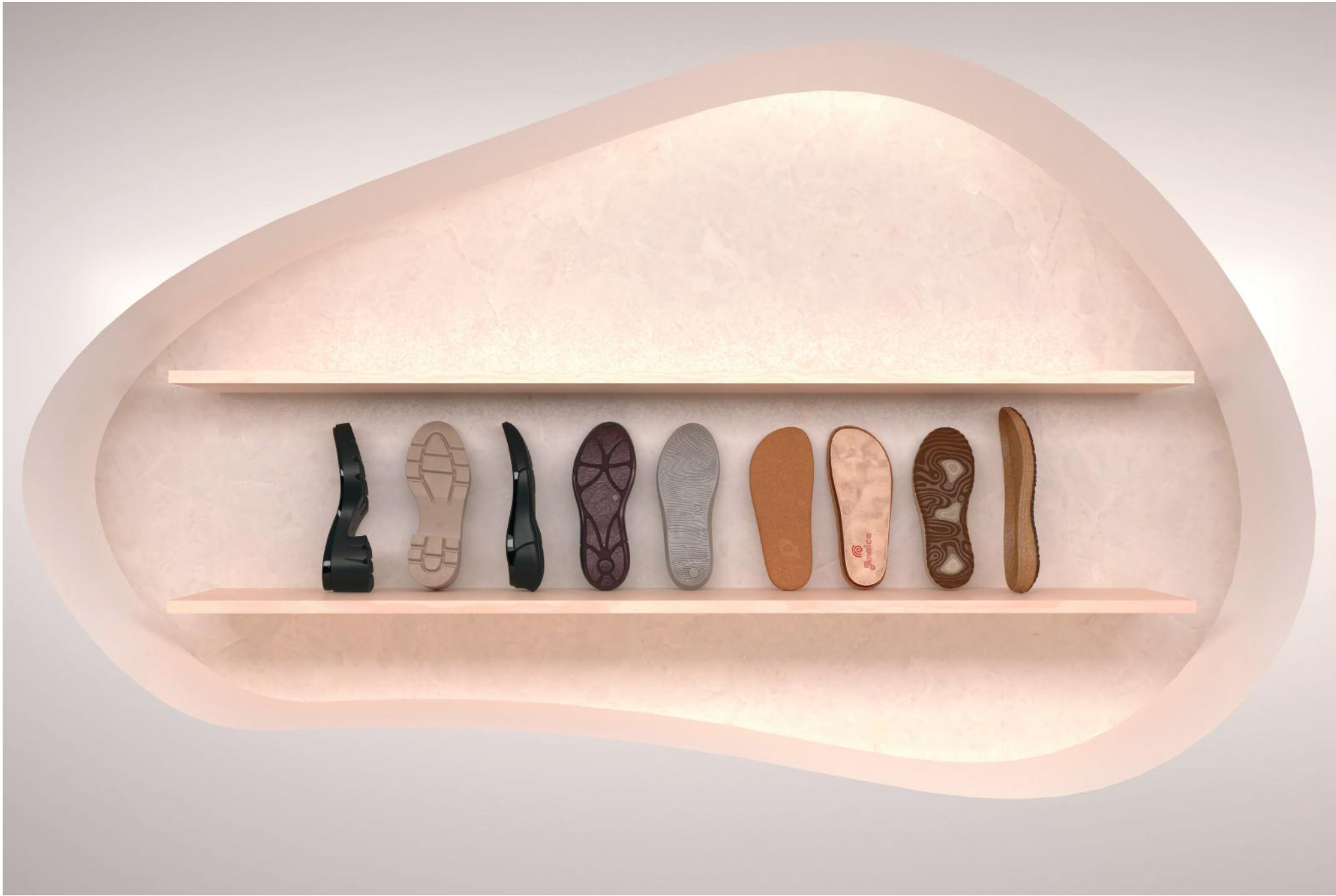
At Analco, we're passionate about **sustainable and innovative fashion**. This season, we've taken a significant step towards a greener future, using **natural and recycled materials**, without compromising on quality and comfort. It's all part of our ongoing commitment to innovation.

Join us on this journey towards a greener, more inspiring, and sustainable world. With every step in our products, you're contributing to a better world.

**Thank you for choosing Analco** and being a part of our exciting story of innovation!

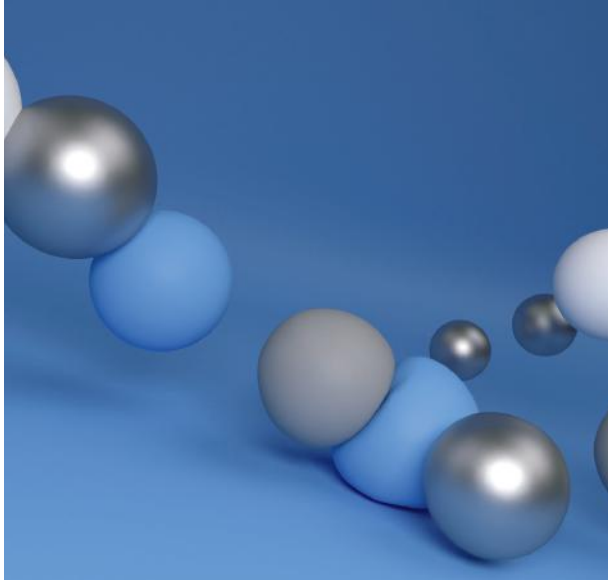
**Maite Alonso**  
CEO







***NEW***



***MATERIALS***

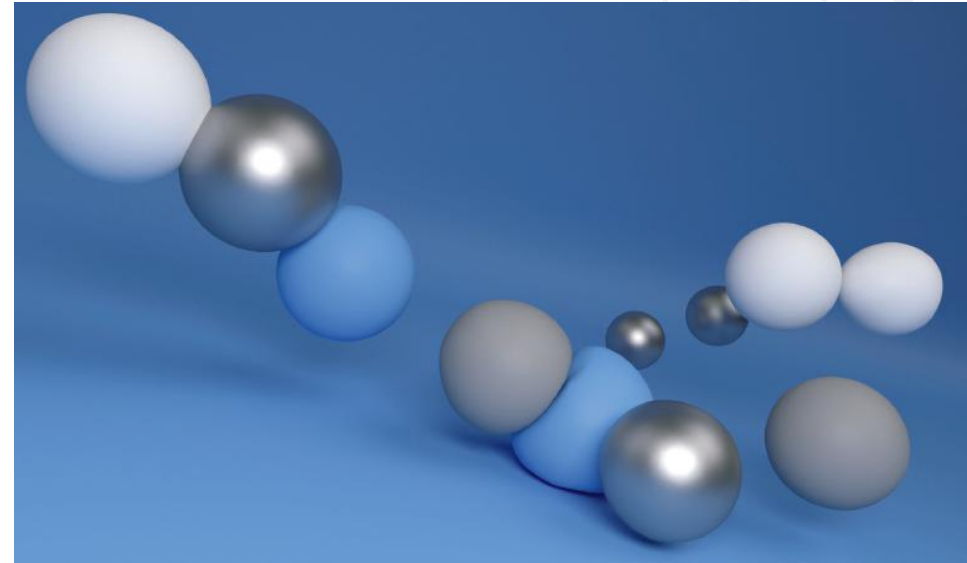




# ***DORECO REBOUND-E***

**Doreco Rebound-E** is an **EVA**-based material with **high shock absorption** and **exceptional elasticity** that redefines comfort in footwear.

Recommended for use in the manufacture of **thermoformed insoles**, **technical padding**, **shock absorbing parts**, available in sheets of different thicknesses and colors.



**Lightweight**



**Elasticity**



**High rebound**

# TYREC



Car tires are made of materials that do not degrade easily and, when incinerated, they release toxic gases into the air that can harm both the environment and human health.

**Tyrec is a sustainable solution for end-of-life tires (ELTs);** with a new rubber formulation that uses up to 50% powder to produce sustainable rubber soles and sheets.



Resistance



Durability



Sustainability





# NATBBER 100

**Natbber 100 y NatbberCork 100** are sole materials with **100% natural rubber** in their composition.

These materials are developed by the Analco team and **come from natural sources**, making them the perfect choice for those looking for an environmentally **friendly alternative** for their footwear.



Lightweight



Flexibility



Sustainability

# NATBBERCORK 100

# ***INDEX***

*of contents*



**14050**  
*pp. 9-12*

◆◆◆



**14109**  
*pp. 13-16*



**60548**  
*pp. 17-20*





**70910+31774/  
6415/6608/6654**  
*pp. 21-22*



**70930**  
*pp. 23-26*



**70929**  
*pp. 27-32*



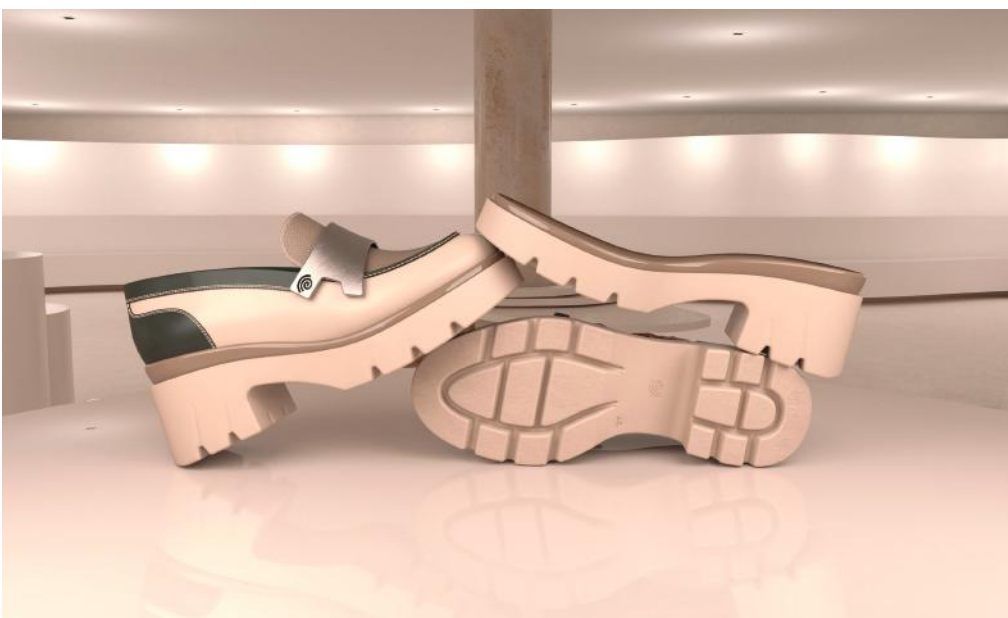
# 14050





14050

The **14050 sole** is a proposal of **style and charm** for women's feet. Its **optimal height and slope** with the **wide and stable heel** allows you to add a few extra centimeters without sacrificing the comfort you desire.





*14050*



**PU sole: 14050**

**Size range: 35/42**





14109





**PU sole: 14109**

**Size range: 35/42**



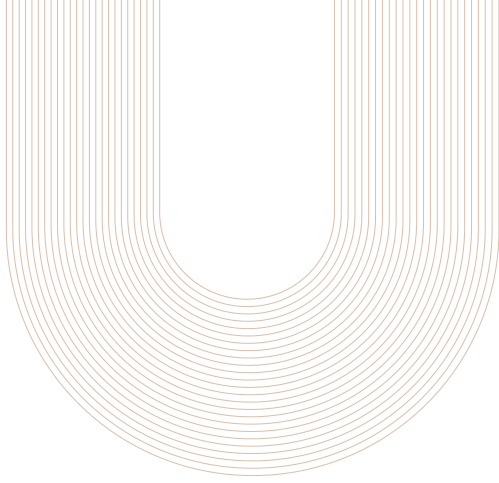
**14109**



*14109*







Mary Jane style shoes are back on the scene. **Versatile, comfortable and easy to combine.** Their rounded toe and adjustable lace up denote that point of **elegance.**

Our **soft polyurethane sole 14109** stands out by its **flexibility, lightness** and **cushioning capacity.** This makes it one of the most comfortable shoes for everyday use.





**Après-ski style boots** are leaving their comfort zone to find their way into shop windows and our wardrobes.

With high-leg, and with our **60548 sole** ready to withstand **very cold weather**, they are designed for grip on slippery surfaces, making them a great way to keep your feet warm.





**60548**



60548 + 40993





**Rubber sole:** 60548

**Size range:** 36/42



Combine this sole with a specially designed insole, taking the comfort of your shoes to the next level.

**Inner anatomical insoles:**

40993





**TR sole: 70910**

**Size range: 35/42**



**Rubber-cork footbed: 31774**

**Size range: 35/42**



**PU footbed: 6415,6608,6654**

**Size range: 35/42**





House clogs with **our 70910** expanded TR sole combined with any of our **6415, 6654** and **6608** insoles are a **very comfortable and practical** type of footwear. They are designed to offer **great comfort** and **good cushioning**.



**70910 + 31774**

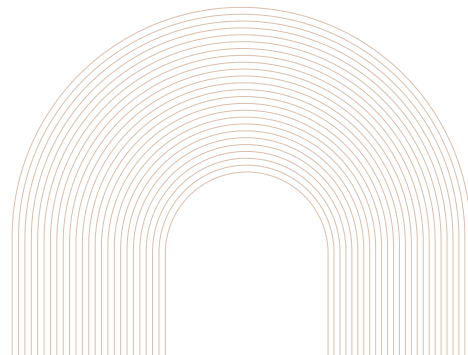
70930 + 40993







# 70930



Our **70930 sole** is made of **expanded TR**, a material characterised by its **lightness** and **flexibility**. We also offer the possibility of incorporating natural fibres, adding that trendy touch to the footwear and becoming a more sustainable option.



**TR sole: 70930**  
**Size range: 36/42**

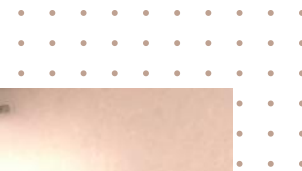


**Rubber-cork footbed:**  
37186





70930





# *NEW ARRIVAL*



The **70929 sole** is one of the **new features** of the **24/25 autumn/winter collection**.

# *70929*





70929

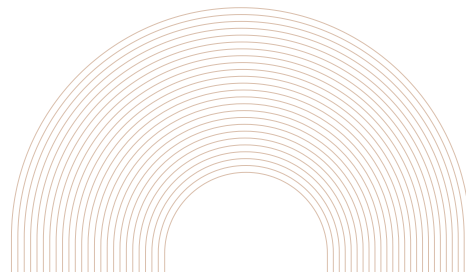


70929





Made of a **thermoplastic material**, its **special design on the tread improves grip**. It can be made in **two colours**, with multiple combinations. It is even possible to make one of the colours crystal-like, giving that more translucent look and giving a nod to difference and exclusivity.









**TR sole: 70929**

**Sizes: 37 and 42**



**Inner anatomical insoles:**

40993



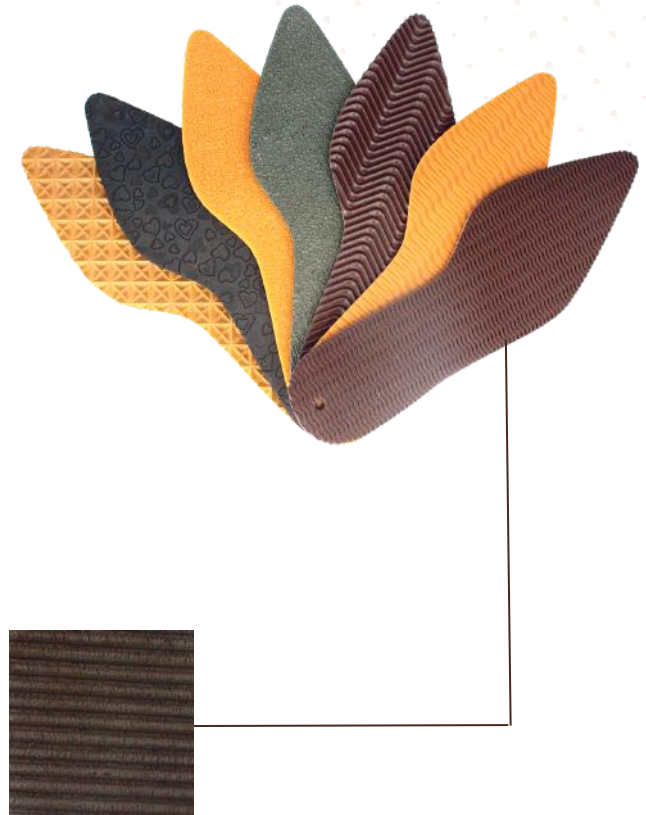
# ***EVA AND RUBBER SHEETS***

With a variety of **EVA** and **rubber qualities**, as well as a **wide selection of colours and thicknesses** available, we stand out as the leading choice in the market.

**EVA sheets**



**Rubber sheets**



**60546**

# ***RUBBER SOLING***

Our combination of rubber and expanded EVA soling in confectionary soles, together with our EVA materials in different qualities, colours and thicknesses, allows us to create voluminous but lightweight winter soles. These materials also offer excellent slip resistance, ideal for cold climates.





# CONTACT

US



## Phone

+34 966 66 12 12



## Mail

analco@analco.com



## Web page

www.analco.com



## Commercial office

Pol.Ind. Torrellano  
c/ Germán Bernácer, 11  
03203, Elche (Alicante)



## Production center

Avinguda de Crevillente, km 3,  
03293 Elche (Alicante)

Pol. Ind. San Juan  
c/ Sevilla, 15 -03158- Catral  
c/ Barcelona, 7 -03158- Catral



AW 2024/2025

## *Follow us*

*Instagram and LinkedIn*



