

# metas



MANAGED LABEL SERVICES®

# Cutter-A

## AUTOMATIC CORE CUTTER

Price: \$\$\$\$ | Speed: >>>>> | Consumables: ΩΩ



Powered By:  


### High-performance core cutting.

MCutter-A is a technologically advanced core cutter designed to automatically cut cardboard cores. This model has been designed to minimize core slit time. An operator inserts the required dimensions and quantity of cores to be slit on the panel, and then loads the parent cores. The cores are loaded on the machine one by one in the automatic cycle, and they are slit into the requested lengths.

**Option:** Automatic loading system with stock for core length 2000mm / 3000mm.

### PRODUCT FEATURES

- Magazine feeder enables cutting core in an automatic cycle
- Thimbles are cut in dust-free technology
- The automatic core cutter can be used with or without the feeder
- Automatic loading system
- Fully automatic
- Fully servo driven
- Touch screen
- Adapters for different cores size
- Ethernet connector for fast diagnostic
- Up to 15 mm depending on diameter
- Optional Length 2500 mm, 3000 mm, and 3500mm
- Waste separator basket for measured and waste cut cores
- Low cost replaceable cutting base



# Cutter-d

## PROGRAMMABLE SEMI-AUTOMATIC CORE CUTTER

Price: \$\$\$\$ | Speed: >>>>>> | Consumables: Ω



Powered By:  


### High-performance core cutting.

The Cutter-d is an innovative automatic core cutter which can fulfil requirements of the most demanding customers. It is a perfect machine to automatically slit large numbers of cardboard cores. An easy to use touch screen panel allows quick input of required quantities and lengths of cores to be slit. The “Start” button activates the intelligent slitting software. Operator intervention is not required during cutting. The core cutter has been designed for quick setup of different core IDs. The Cutter-d is our answer to the increasing requirements of our customers for a quick and dust free cut of cardboard cores.

### PRODUCT FEATURES

- Magazine feeder enables cutting core in an automatic cycle
- Thimbles are cut in dust-free technology
- Fully automatic
- Fully servo driven
- Touch screen
- Adaptors for different cores size
- Ethernet connector to fast diagnostic
- Up to 15mm depending on diameter
- Optional length 2000 mm, 2500 mm, 3000 mm, and 3500 mm
- Waste separator basket for measured and waste cut cores
- Core sizes 1-8”
- Low cost replaceable cutting base

# Easy Cut

## FILM AND LABEL CUTTER

Price: \$\$\$ | Speed: >>>>>> | Consumables: ΩΩ



### High-performance label cutting.

Metas® Easy Cut is a versatile, offline sheeter that cuts using print mark, gap or sheet size. It comes with a high quality long life blade for a high cut accuracy. It is powered with a new generation of brushless motors which allows for a single cut or double cut with waste removal. It is also available with a rotary slitting knife assembly as an option.

#### PRODUCT FEATURES

- New control with LCD touch screen 7"
- Electronic change size system with sheet length in 0,01 mm
- Setting available: number of labels per sheet
- Cut selection: single cut / double cut
- Label gap reader sensor suitable for die-cut labels
- Programmable sheet/lot counters
- Print mark/slot sensor for printed materials
- Speed ref. on mm 50,0 sheet length with single cut: 25.000 sheets/hour
- Speed ref. on mm 304,8 sheet length with single cut: 13.500 sheets/hour
- Speed ref. on mm 610,0 sheet length with single cut: 7.500 sheets/hour
- CE standards

# Easy Fold

## COMPACT FAN FOLDING MACHINE

Available Sizes: 330 mm (13 in), 508 mm (20 in), and 660 mm (26 in).  
 Price: \$\$\$ | Speed: >>>>>> | Consumables: ΩΩ



### Fan folding Labels. Made easy.

Easy Fold is a new generation of compact fan folding machine which has been created for folding labels and tickets without sprocket holes and gears. The folding register is electronically controlled using label gap or print mark sensor reader. The finished product is neatly stacked on a programmable stacking table. Can handle up to 13" web.

#### PRODUCT FEATURES

- Compact design
- Innovative control via tablet for length size and settings input
- Couple of side guides to adjust the pin-less web feeding
- Electronic change size system with fold length in Z or mm
- Easy and fast set-up: programmable counter STOPS when reaching the set number of folders - the operate pulls out the pack, raises the collecting table and can start the next operating process
- Automatic descending table
- Fold phase setting adjustable during production
- Gap reader sensor suitable for die-cut labels
- 2-piece wheel holder unit with traction rubber wheel
- Folder with extraction rollers, beaters, and brushes
- Meets CE standards



# Electronic Spiral Fan Folder

## MODEL SP-508-E (GEARLESS)

Price: \$\$\$\$ | Speed: >>>>> | Consumables: Ω



### Label folding. Made easy.

High speed fan folder [115 m /min] electronic change size system. Solid structure and curated design for the high level machine able to fan fold labels, tic. and lottery tickets. Able to work on line through synchro kit with die—cutting unit or printing Machine or off line with unwinder model UW—330/400/508—SB. The folding register is always electronically controlled through label gap/print mark sensor reader. It can adjust the folding phase during production. The batch counter is done with an quick speed-up of the conveyor belt [for labels] or with pen marker [for paper] without stops. It is also available mini spiral kit able to process minimum folding size of mm 150 [5.90"].

#### PRODUCT FEATURES

- Fork reader-sensor compatibility for neutral labels
- Multifunction and LCD control panel
- Belt delivery with variable speed setting
- No stop folder setting
- Compatible with on line unwind tension free units or on line flexo printers or die cutting units (see options)
- New re-styling for the high-speed fan folder (115 m/min) with electronic change size system
- Electronically controlled folding register through a label/gap print mark sensor reader
- No stop batch counter is done with a quick speed-up of the conveyor belt (for labels) or with a pen marker (for paper)
- Available as a mini spiral kit able to process a minimum folding size of mm 150 (5.90")
- Folding size ranges from mm 190,50 up to mm 485 with steps in 1/6 or 1/8 of inch



# GL Series

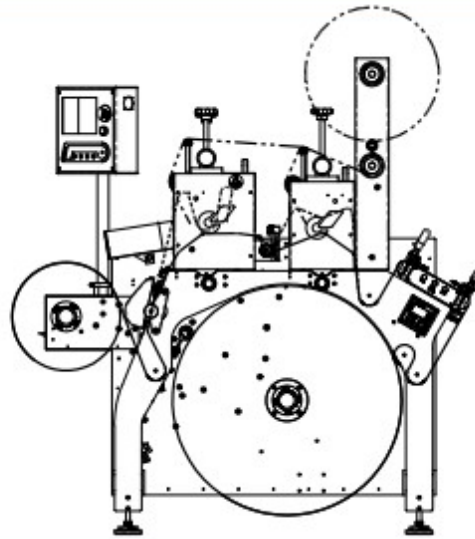
Price: \$\$\$\$ | Speed: »»»»» | Consumables: ΩΩ

## SHORT DESCRIPTION: 280 / 330 GL

Metas 280 / 330 GL is a new series of machines dedicated to customers who start providing their printing houses. Metas 280 / 330 GL is a new product targeted to customers for whom the price of the device is a key issue. The functionality of this machine in the production of labels has not been limited in any way compared to machines of the RLS series. The ergonomic design of the device allows comfortable work. The machine is microprocessor controlled. The intuitive interface is combined with 7-inch touch screen. Machine can be equipped with none, 1 or 2 die cutting units driven by main motor (blank labels) or servo drive. Each machine contains shear cutting unit for slitting. There are also many variants of rewinding units: single shaft, double shaft, semi-turret – each one driven by electromagnetic clutch or servo motor as option.

## MAIN FEATURES:

- Slitting
- Rewinding
- Rotary die cutting / sheeting (option)



## TECHNICAL PARAMETERS:

- max. web's width: 280/330 mm
- material type: paper, foil (PP, PVC, PET), self adhesives
- material thickness: 50 µm – 200 µm
- max. mechanical speed: 220 m/min
- power supply voltage / frequency: 3 x 400V / 50 Hz
- installed power: ~4 kW
- max. unwinding roll's diameter: 750 mm
- max. rewinding roll's diameter: up to 600 mm
- max. roll's weight on unwinder: 120 kg
- electronic web guide system
- shear cutting slitting unit
- single shaft rewinding unit

### Options:

- web's straightening device
- back scorer unit for liner slitting
- single rotary die cutting unit
- second die cutting unit
- servo register system for preprinted labels die cutting
- different matrix rewinder (standard, servo driven, "snowball" type, etc.)
- razor blade or crush cutting knives slitting unit
- different rewinding unit (double shaft / semi-turret - also servo driven)



# CF Series CF 380

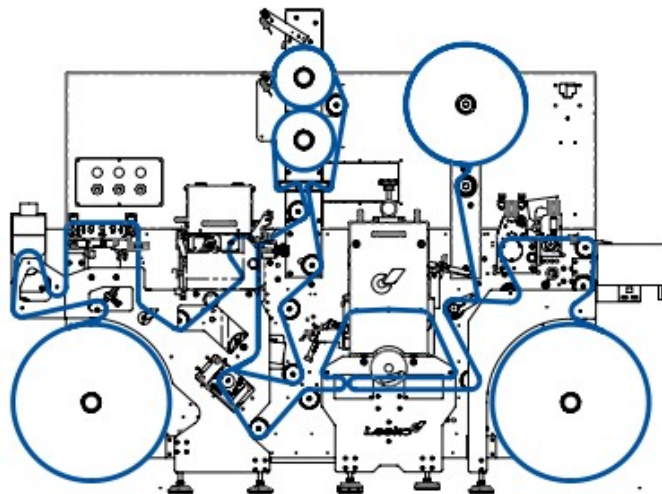
Price: \$\$\$\$ | Speed: >>>>>> | Consumables: ΩΩ

## SHORT DESCRIPTION:

Metas CF 380 is only one on the market so compact and efficient machine prepared for finishing of digitally printed labels . It is equipped with rotary flexo unit with independent control panel for printing and varnishing (UV LED drying system ). Thanks to the lamination unit it is possible to do all kind of lamination and also cold -foil (registration control from Mitsubishi Electric ). Semi -rotary die cutting unit equipped with servo register systems from Mitsubishi Electric enables die cutting in registration of preprinted labels with mark with speed up to 100 m /min . Machine is equipped also with shear cutting unit for slitting , single shaft servo driven rewinder and camera for visual inspection.

## MAIN FEATURES:

- Corona treating
- Rotary flexo printing / varnishing
- Self-adhesive lamination with and without the liner / “wet” lamination
- Cold-foil
- Semi-rotary die cutting
- Slitting
- Visual inspection
- Rewinding



## TECHNICAL PARAMETERS:

- max. web's width: 380 mm
- material type: paper, foil (PP, PVC, PET), self adhesives
- material thickness: 50 µm – 200 µm
- max. mechanical speed: 160 m/min
- max. printing speed: 120 m/min
- max. die cutting speed (semi-rotary): 100 m/min
- power supply voltage / frequency: 3 x 400V / 50 Hz
- installed power: ~18 kW
- max. unwinding roll's diameter: 650 mm
- max. rewinding roll's diameter: 650 mm
- max. roll's weight: 140 kg
- corona treater
- electronic web guide system from BST International
- fully equipped rotary flexo unit with servo register system and UV LED dryer
- lamination unit for all types of lamination and cold-foil
- semi-rotary die cutting unit
- matrix rewinder for rolls up to 500 mm diameter
- pneumatically clamped slitting unit



# CL 280 3DIE

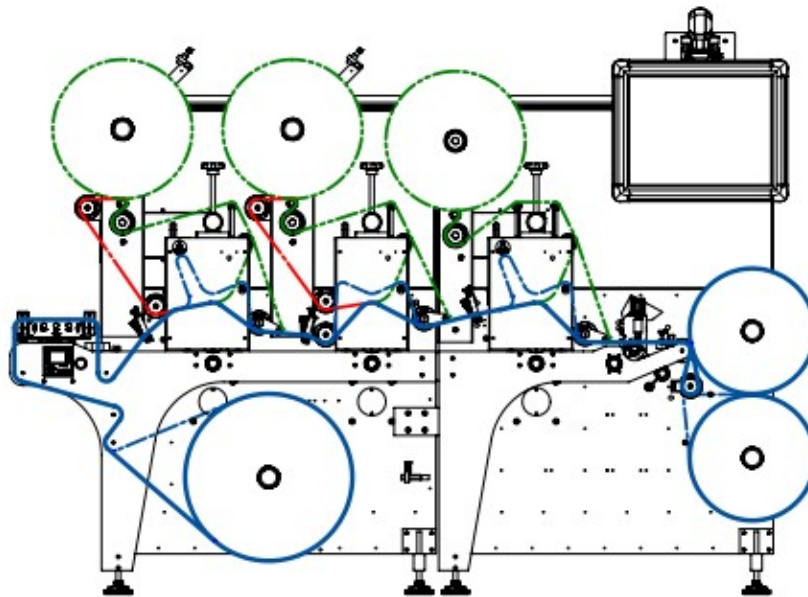
Price: \$\$\$\$ | Speed: >>>>>> | Consumables: ΩΩ

## SHORT DESCRIPTION:

Metas CL 280 3DIE is part of CL line machines which are built strictly according to customer's needs. It is a special custom made project designed for one of our customers. This machine is dedicated to production of wide range of special labels. It is equipped with 3 die cutting units and 3 matrix rewinders. 2 of 3 matrix rewinders can work also as laminate unwinders and thanks to the rubber pressure rollers installed inside die cutting units material can be laminated. All of die cutting units are equipped with servo register systems from Mitsubishi Electric which enable die cutting in registration of preprinted labels with mark. Machine is equipped also with shear cutting unit for slitting and double shaft servo driven rewriter.

## MAIN FEATURES:

- Rotary die cutting
- Self-adhesive lamination
- Slitting
- Rewinding



## TECHNICAL PARAMETERS:

- max. web's width: 280 mm
- material type: paper, foil (PP, PVC, PET), self adhesives
- max. die cutting speed (depends on material): 200 m/min
- power supply voltage / frequency: 3 x 400V / 50 Hz
- installed power: ~15 kW
- max. unwinding roll's diameter: 600 mm
- max. unwinding roll's weight: 120 kg
- electronic web guide system from BST International
- all matrix rewinders / laminate unwinders for rolls up to 500 mm diameter
- servo driven die cutting units adapted to customer's magnetic cylinders
- pneumatically clamped slitting unit
- servo driven double shaft rewriter for rolls up to 2 x 450 mm diameter

SPECIFICATIONS SHEET

# CL Series 280

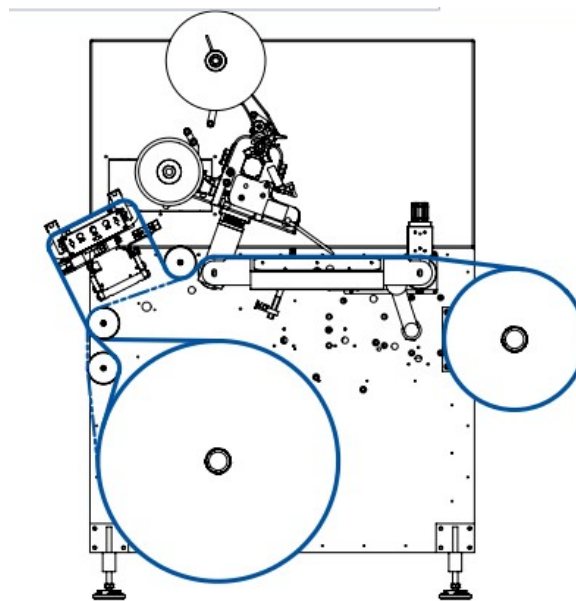
Price: \$\$\$\$ | Speed: »»»»» | Consumables: ΩΩ

## SHORT DESCRIPTION:

Metas CL280 is a compact size, efficient rewinder prepared for the installation of labels application head. Thanks to the servo drive and encoder installed in the machine, there is a possibility to combine the rewinder with application head easily. Machine is equipped with big application table, color panel with touchscreen and single shaft servo driven rewinder.

## MAIN FEATURES:

- Labels application
- Optic inspection
- Rewinding



## TECHNICAL PARAMETERS:

- max. web's width: 280 mm
- material type: paper, foil (PP, PVC, PET), self adhesives, booklets
- material thickness: 50 µm – 500 µm or more
- max. mechanical speed: 100 m/min
- power supply voltage / frequency: 3 x 400V / 50 Hz
- installed power: ~4 kW
- max. unwinding roll's diameter: 750 mm
- max. rewinding roll's diameter: 440 mm
- max. roll's weight on unwinder: 120 kg
- electronic web guide system from BST International

# CL380

Price: \$\$\$\$ | Speed: >>>>>> | Consumables: ΩΩ

## SHORT DESCRIPTION:

Metas CL 380 is part of CL line machines which are built strictly according to customer's needs. This machine is prepared for finishing of digitally printed labels as well as for the production of a wide range of labels. It is equipped with rotary flexo unit with independent control panel for printing and varnishing (UV drying system from UV Ray). Thanks to the lamination unit it is possible to do all kind of lamination and also cold-foil (registration control from Mitsubishi Electric). Rotary die cutting unit equipped with servo register systems from Mitsubishi Electric enables die cutting in registration of preprinted labels with mark. Machine is equipped also with shear cutting unit for slitting and single shaft servo driven rewinder.

## MAIN FEATURES:

**Rotary flexo printing varnishing**

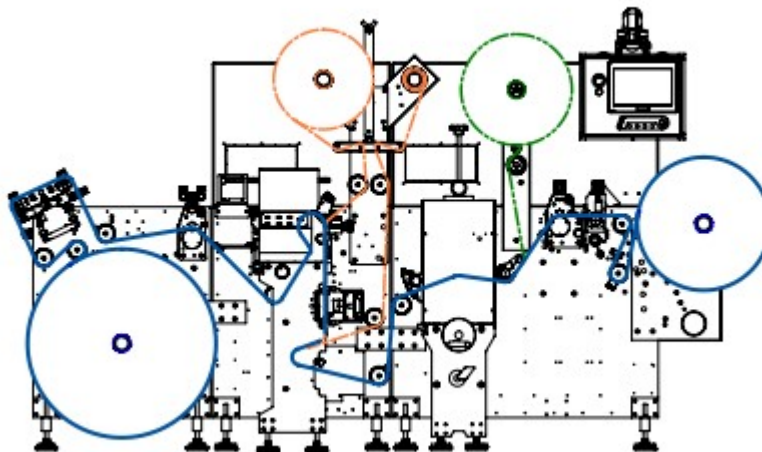
**Self-adhesive lamination with and without the liner / "wet" lamination**

**Cold-foil**

**Rotary die cutting**

**Slitting**

**Rewinding**



SPECIFICATIONS SHEET

## TECHNICAL PARAMETERS:

- max. web's width: 380 mm
- material type: paper, foil (PP, PVC, PET), self adhesives
- material thickness: 50 µm – 200 µm
- max. printing speed: 100 m/min
- max. die cutting speed (depends on material): 160 m/min
- power supply voltage / frequency: 3 x 400V / 50 Hz
- installed power: ~15 kW
- max. unwinding roll's diameter: 850 mm
- max. unwinding roll's weight: 140 kg
- electronic web guide system from BST International
- fully equipped rotary flexo unit with servo register system and UV dryer
- lamination unit for all types of lamination and cold-foil
- servo driven rotary die cutting unit
- matrix rewinder for rolls up to 500 mm diameter
- pneumatically clamped slitting unit
- servo driven rewinder for rolls up to 600 mm diameter



# CL 530 ID

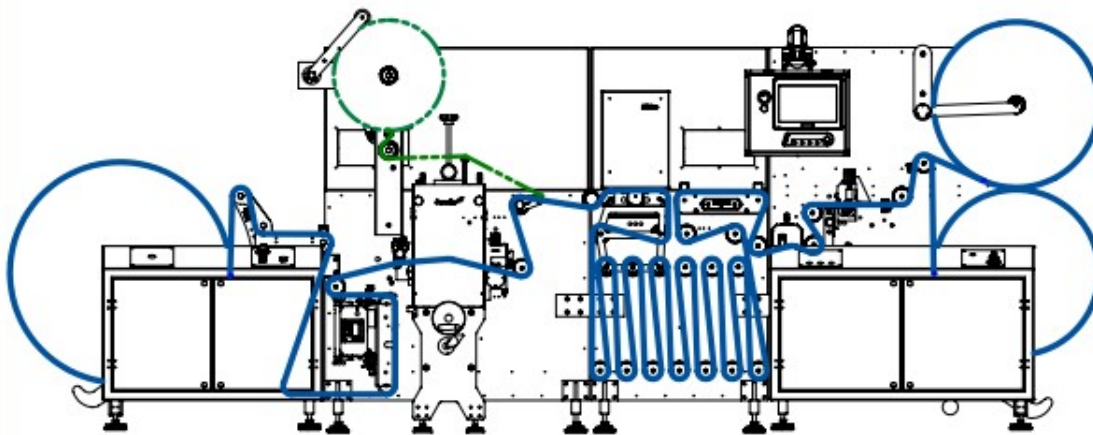
Price: \$\$\$\$ | Speed: >>>>>> | Consumables: ΩΩ

## SHORT DESCRIPTION

Metas CL 530 ID is part of CL line machines which are built strictly according to customer's needs. It is a special custom made project designed for one of our customers. This machine is dedicated to efficient production and inspection of preprinted labels in great quantity. It is equipped with one rotary die cutting unit with servo register system from Mitsubishi Electric which enable die cutting in registration of preprinted labels with mark and matrix rewriter. Inspection module with buffer, place for the installation of inspection system and inspection table enables 100% control of the labels quality. Machine is equipped also with shear cutting unit for slitting. Hydraulic unwinder and double shaft servo driven rewriter enables to rewind rolls up to 1 x 1000 mm or 2 x 750 mm.

## MAIN FEATURES:

- Rotary die cutting
- 100% inspection
- Slitting
- Rewinding



## TECHNICAL PARAMETERS:

- max. web's width: 530 mm
- material type: paper, foil (PP, PVC, PET), self adhesives
- max. die cutting speed (depends on material): 200 m/min
- max. die cutting speed to register (depends on material): 160 m/min
- max. die cutting speed during inspection: 100 m/min
- power supply voltage / frequency: 3 x 400V / 50 Hz
- installed power: ~30 kW
- max. unwinding roll's diameter: 1000 mm
- max. unwinding roll's weight: 450 kg
- electronic web guide system from BST International
- servo driven die cutting unit with Mitsubishi Electric control
- matrix rewriter for rolls up to 500 mm diameter
- inspection module with buffer and big table
- pneumatically clamped slitting unit with interchangeable knives (shear cutting and razors)
- servo driven double shaft rewriter for rolls up to 2 x 750 mm or 1 x 1000 mm diameter

SPECIFICATIONS SHEET



## SHORT DESCRIPTION: **WINDER-d**

Price: \$\$\$ | Speed: >>>>>> | Consumables: ΩΩ

WINDER-d - narrow web slitter

More and more packaging material converters are looking for cost-effective slitting and rewinding solutions. To meet the growing expectations, the JURMET company has developed the WINDER-d slitter. This machine has most of the options using the WINDER version and is designed for all types of packaging materials that are the product of medium and narrow web printers.



### MAIN FEATURES:

- Width of material: 600/800mm
- Unwind diameter: 800mm.
- Rewind diameter: 600mm
- Available equipment
- Compact construction
- Shaft-less unwind for 3" and 6" including a remote control.
- Hydraulic lifting of parent roll (or pneumatic)
- Converted material.
- printed / unprinted foil (PE, PP,PA,PET and other),metalized foil, laminates, shrink film, label stock film, paper, HSF film, aluminum, para transmission film
- Application packaging for food industry, flexo printing houses, health care materials and pharma materials



# HI 440 Slitter

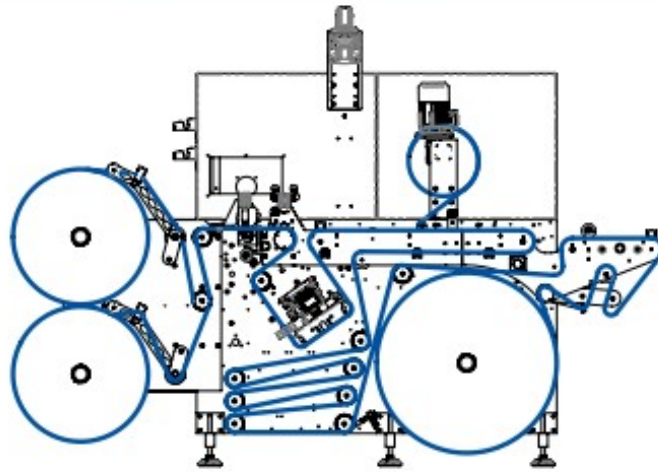
Price: \$\$\$\$ | Speed: »»»»» | Consumables: ΩΩ

## SHORT DESCRIPTION:

Metas HI 440 is a well-known slitter / rewinder that is installed all over the world in many variants. It is the best option for labels inspection and production due to its ergonomic design. Machine control is conducted by microprocessor controller with a 7-inch color touch display placed on movable panel. Lesko HI 440 is driven by asynchronous main motor. Horizontal design enables installation of any inspection system available on the market. Nearly 1m long inspection table with movable splice line and pneumatic clamps and additional rewinder of wastes placed above the table enable making web's amendments. Machine is equipped with slitting unit and interchangeable knives - shear cutting and razors. Thanks to the double shaft servo driven rewinder with arms equipped with rubber rollers for rolls pressing, it is possible to rewind even very thin materials (18 microns thick).

## MAIN FEATURES:

- 100% inspection
- Making amendments
- Slitting
- Rewinding



## TECHNICAL PARAMETERS:

- max. web's width: 440 mm
- material type: paper, foil (PP, PVC, PET), monofoils, self adhesives
- material thickness: 18 µm – 200 µm
- max. mechanical speed: 400 m/min
- power supply voltage / frequency: 3 x 400V / 50 Hz
- installed power: ~10 kW
- max. unwinding roll's diameter: 800 mm
- max. rewinding roll's diameter: 2 x 600 mm
- max. roll's weight on unwinder: 160 kg
- active dance roll for increased machine's dynamic
- electronic web guide system from BST International
- inspection table with movable splice line and pneumatic clamps
- rewinder of wastes placed above the inspection table
- buffer for high speed inspection mode
- possibility of installation of any inspection system available on the market
- pneumatic slitting unit with interchangeable knives - shear cutting and razors
- servo driven double shaft rewinder for rolls up to 2 x 600 mm

SPECIFICATIONS SHEET





# HSS 440

Price: \$\$\$\$ | Speed: »»»»» | Consumables: Ω

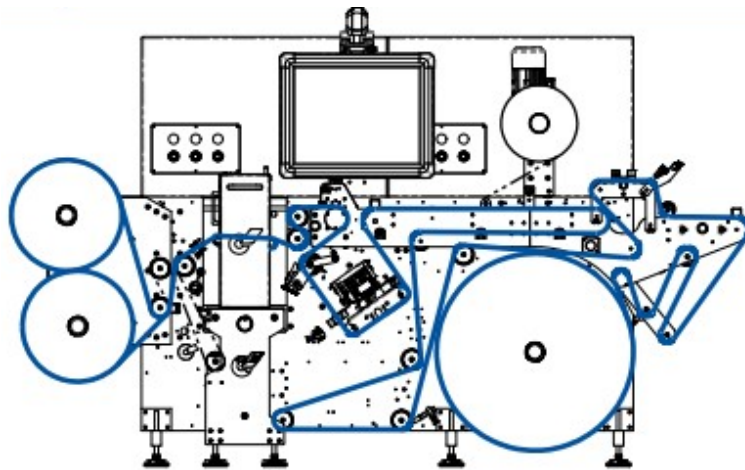
## SHORT DESCRIPTION

Metas HSS440 is a developed version of well-known slitter/rewinder HI440 that is installed all over the world in many variants. It is dedicated to inspection and control of shrink sleeve labels. Machine control is conducted by microprocessor controller with a 7-inch color touch display placed on movable panel. Metas HSS440 is driven by asynchronous main motor with servo control. Horizontal nearly 1m long inspection table with movable splice line and pneumatic clamps and additional rewinder of wastes placed above the table enable making web's amendments. Thanks to the special systems installed, HSS440 can do longitudinal perforation of shrink sleeves and can also control the gluing quality. Machine is equipped with automatic slitting unit. Thanks to the double shaft servo driven rewinder with oscillator, there is a possibility of oscillatory rewinding of shrink sleeve materials.

## MAIN FEATURES

- Optic inspection (stroboscope) and making amendments of shrink sleeve materials
- Electronic control of sleeve's width Making longitudinal perforation of shrink sleeves
- Control of gluing quality
- Slitting (automatic knives positioning)
- Oscillatory rewinding
- Both direction rewinding

SPECIFICATIONS SHEET



## TECHNICAL PARAMETERS:

- max. web's width: 440 mm
- material type: paper, foils (PVC, PET, OPS, PLA), self adhesives, transparent materials
- material thickness: 15 µm – 200 µm
- max. mechanical speed: 400 m/min
- power supply voltage/frequency: 3x400V/50Hz
- installed power: ~12 kW
- max. unwinding roll's diameter: 800 mm
- max. rewinding roll's diameter: 2 x 450 mm
- max. roll's weight on unwinder: 160 kg
- active dance roll for increased machine's dynamic
- electronic web guide system from BST International (both direction rewinding)
- inspection table with movable splice line and pneumatic clamps
- rewinder of wastes placed above the inspection table
- pneumatics slitting unit with automatic positioning of knives
- servo driven double shaft rewinder with oscillator for rolls up to 2 x 450 mm



SPECIFICATIONS SHEET

# RLS DIE SERIES

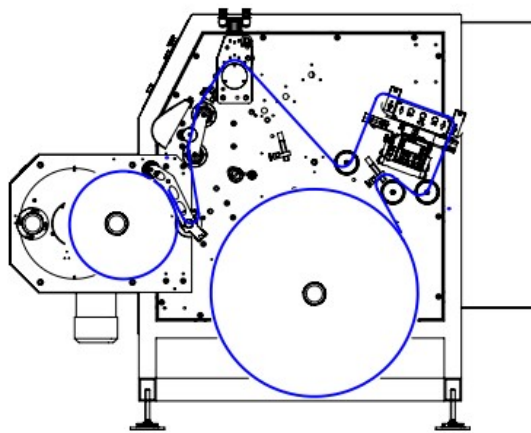
Price: \$\$\$\$ | Speed: »»»»» | Consumables:

## SHORT DESCRIPTION

MetasRLSDIE is a series of solid and efficient die cutting machines that has been produced for years in many variants. It is the best option for simple blank and preprinted labels production, due to its ergonomic design. Machine can be equipped with 1 or 2 die cutting units driven by main motor (blank labels) or servo drive supplied by Mitsubishi Electric (preprinted labels – die cutting in register with speed up to 160 m/min). Machine control is conducted by microprocessor controller with a 7-inch color display. Machine can be also equipped with web straightening device or backscoring unit for liner slitting. Each machine contains shear cutting unit for slitting. There are also many variants of rewinding units: single shaft, double shaft, semi-turret – each one driven by electromagnetic clutch or servo motor as option.

## MAIN FEATURES:

- **Rotary die cutting**
- **Slitting**
- **Rewinding**



## TECHNICAL PARAMETERS:

- max. web's width: 280 / 380 / 440 / 530 mm
- material type: paper, foil (PP, PVC, PET), self adhesives
- material thickness: 50 µm – 200 µm
- max. mechanical speed: 220 m/min
- max. die cutting speed (in register): 160 m/min
- power supply voltage / frequency: 3 x 400V / 50 Hz
- installed power: ~6 kW
- max. unwinding roll's diameter: 750 mm
- max. rewinding roll's diameter: up to 600 mm
- max. roll's weight on unwinder: 120/140/160/200kg
- electronic web guide system from BST International
- single rotary die cutting unit
- matrix rewinder for rolls up to 500 mm diameter
- shear cutting slitting unit
- single shaft rewinding unit driven by electromagnetic clutch

### Options:

- web's straightening device
- back scorer unit for liner slitting
- second die cutting unit
- servo register system for preprinted labels die cutting
- different matrix rewinder (servo driven, "snowball" type, etc.)
- razor blade or crush cutting knives slitting unit
- different rewinding unit (double shaft / semi-turret - also servo driven)





# RLS SERIES

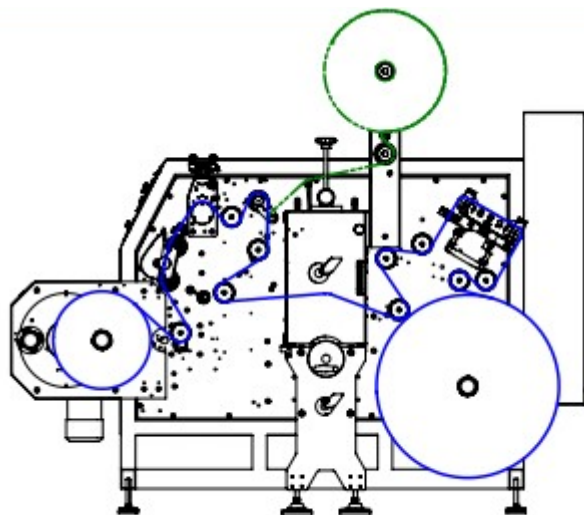
Price: \$\$\$\$ | Speed: »»»»» | Consumables:

## SHORT DESCRIPTION:

Metas RLS is a series of solid and efficient slitter-rewinders that was established in 2001, so it was the first product of Lesko Engineering. This machine contains everything what an efficient slitter-rewinder should have. Machine control is conducted by microprocessor controller with a 7-inch color display. Each machine contains shear cutting unit for slitting (razor blade and crush cutting as option). There are also many variants of rewinding units: single shaft, double shaft, semi-turret – each one driven by electromagnetic clutch or servo motor as option.

## MAIN FEATURES:

- Slitting
- Rewinding



## TECHNICAL PARAMETERS:

- max. web's width: 280 / 380 / 440 / 530 mm
- material type: paper, foil (PP, PVC, PET), self adhesives
- material thickness: 50 µm – 200 µm
- max. mechanical speed: 250 m/min
- power supply voltage / frequency: 3 x 400V / 50 Hz
- installed power: ~4 kW
- max. unwinding roll's diameter: 750 mm
- max. rewinding roll's diameter: up to 600 mm
- max. roll's weight on unwinder: 120 / 140 / 160 / 200 kg
- electronic web guide system from BST International
- shear cutting slitting unit
- single shaft rewinding unit driven by electromagnetic clutch

### Options:

- razor blade or crush cutting knives slitting unit
- different rewinding unit (double shaft / semi-turret - also servo driven)

SPECIFICATIONS SHEET

# IRS 330 SS

Price: \$\$\$\$ | Speed: »»»»» | Consumables:

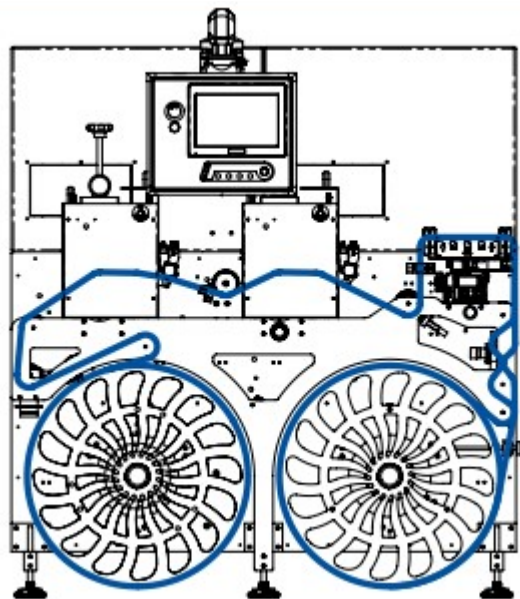
## SHORT DESCRIPTION:

Metas IRS 330 SS is a new version of machine dedicated to die cutting of shrink sleeve labels. It is the best option for shrink sleeve production: roll to roll or roll to sheet. Both die cutting units are equipped with servo register systems from Mitsubishi Electric that enables die cutting in registration of preprinted materials with mark with speed up to 70 m/min. Machine control is conducted by microprocessor controller with a 7-inch color display. Machine is equipped also with web straightening device and single shaft servo driven rewinder with oscillator.

## MAIN FEATURES

- **Web's straightening**
- **Rotary die cutting**
- **Sheeting**
- **Oscillatory rewinding**

SPECIFICATIONS SHEET



## TECHNICAL PARAMETERS:

- max. web's width: 330 mm
- material type: paper, foil (PP, PVC, PET), self adhesives, shrink sleeves
- material thickness: 20 µm – 200 µm
- max. mechanical speed: 200 m/min
- max. die cutting speed in register (cross cutter): 70 m/min
- power supply voltage / frequency: 3 x 400V / 50 Hz
- installed power: ~15 kW
- max. unwinding roll's diameter: 700 mm
- max. rewinding roll's diameter: 700 mm
- max. roll's weight on unwinder: 120 kg
- electronic web guide system from BST International
- web's straightening device
- rotary die cutting units unit with servo register systems (cross cutter)
- first die cutting unit prepared for making perforation on shrink sleeve materials
- second die cutting unit prepared for sheets production

## MTTR HORIZONTAL TABLE REWINDER

Price: \$ | Speed: >>>>



### Label rewinding. Made easy.

The MTTR is dedicated to post production jobs like: rewinding on different core's sizes, optic inspection of labels, rewinding of faulty rolls, counting. The ergonomic design of the device enables sitting position of the operator during work. The machine is microprocessor controlled. The intuitive interface is combined with 3,4-inch color touch screen. Table's plane angle is changeable by motor. Machine rewinds both direction and thanks to automatic slowdown and stop system allows to stop on exact desired label or distance.

#### PRODUCT FEATURES

- Both direction rewinding
- Optic inspection and making amendments
- Counting (labels / meters)

# RLS 280 G

Price: \$\$\$\$ | Speed: »»»»» | Consumables

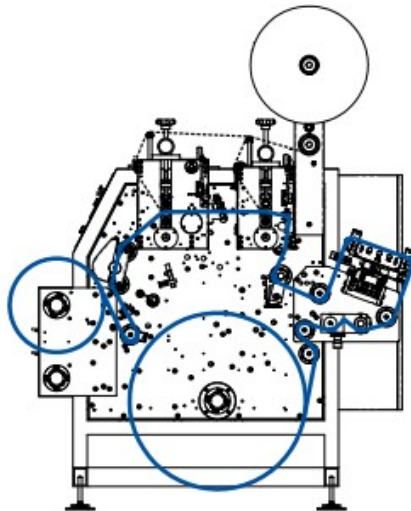
## SHORT DESCRIPTION:

Metas RLS 280 DG is a developed version of well-known machine Metas RLS 280 G that has been produced for over 10 years in many variants. It is the best option for simple labels production, due to its ergonomic design. Both die cutting units are equipped with servo register systems from Mitsubishi Electric that enable die cutting in registration of preprinted labels with mark with speed up to 160 m/min. Second die cutting unit is modified and prepared to be used for both: die cutting and also sheeting. Machine control is conducted by microprocessor controller with a 7-inch color display. Machine is equipped also with web straightening device, backscoring unit for liner slitting, shear cutting unit for slitting and single shaft servo driven rewinder.

## MAIN FEATURES:

- **Web's straightening**
- **Linerslitting(backscoring)**
- **Rotary die cutting**
- **Sheeting**
- **Slitting**
- **Rewinding**

SPECIFICATIONS SHEET



## TECHNICAL PARAMETERS:

- max. web's width: 280 mm
- material type: paper, foil (PP, C, T), self adhesives
- material thickness: 50 µm – 200 µm
- max. mechanical speed: 220 m/min
- max. die cutting speed (in register): 160 m/min
- power supply voltage / frequency: 3 x 4V / 50 z
- installed power: ~10 k
- max. unwinding roll's diameter: 750 mm
- max. rewinding roll's diameter: 4 mm
- max. roll's weight on unwinder: 120 kg
- electronic web guide system from BST International
- web's straightening device
- back scorer unit for liner slitting
- rotary die cutting units unit with servo register systems
- second die cutting unit prepared for sheets production
- matrix rewinder for rolls up to 500 mm diameter
- shear cutting slitting unit

# Module Die Cutting Station IRS 330

Maximum working width of magnetic cylinder Magnetic cylinder repeat size 96-220T

- Magnetic cylinder driven by servo drive.
- Pneumatic NIP roller device
- Matrix rewind unit driven by servo with pneumatic nip roller 76mm.
- Matrix rewind spindle-diameter Maximum rewind diameter-matrix
- Dancer roller for tension matrix
- Hydraulic pressure read out 2 clocks 500 mm.
- Modified pressure bridge allows the magnetic die cylinder to lift the magnetic die cylinder without hoist to mount the magnetic die plate.
- Control system for off-line in register die cutting.
- Maximum running speed during in-register die-cutting process 120m/min for stable materials Nonstop stacker 4 streams across
- Simco antistatic bar: 3 pcs
- Delivery conveyor driven with vacuum belts and vacuum pump.
- Max. width 330 mm
- Max. stack length 630 mm
- Max. stack height 120 mm
- Max. stack speed 80m/min

