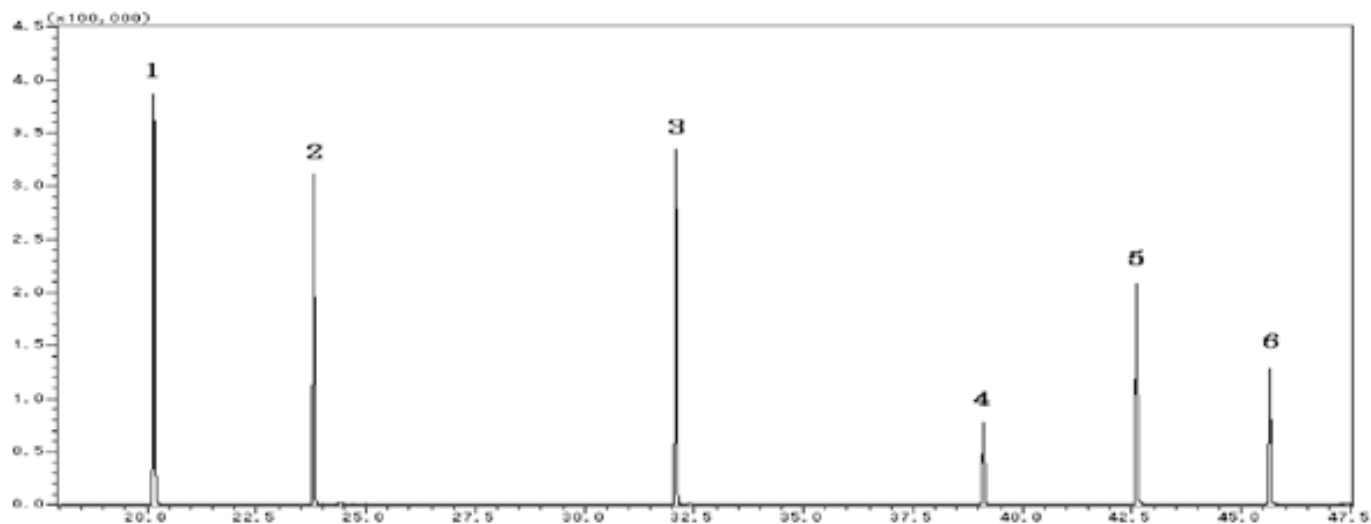


InertSearch™ for GC

InertCap® Applications

Phthalate ester

Data No. GA051-0000



System : GC/MS
Column : InertCap 1
0.25mm I.D. x 30m df=0.25µm
Column Temp. : 60°C (3min) → 5°C/min → 280°C (3min)
Injection : Splitless 1µL
280°C
Detection : MS SIM
Sample : Phthalate esters

Solutes : 1. Dimethylphthalate
2. Diethylphthalate
3. Di-n-butylphthalate
4. Butylbenzylphthalate
5. Di(2-ethylhexyl)phthalate
6. Dioctylphthalate