

# **BEST** LAMINATE



**BRAND CATALOG**

# Expect More From Your Floor.®

Durability and beauty at an affordable price.

The Bestlamine® brand was created to give our customers the highest quality flooring at an affordable price point.

After years in the flooring business dealing with challenges like price controls and inventory restrictions from big brands, we decided to offer our own collection of highly durable, waterproof floors with beautiful designs and a wide variety of choices.

Eliminating the middle man allows us:

- Full control of inventory
- In-stock flooring for fast delivery
- Direct from manufacturer pricing
- In-house quality control

***Shop with confidence! Bestlamine® has been BBB A+ rated since 2005!***

**Featured On:**







BLADH-3201

# Powered By *Passion*

---

To us, flooring is more than a business - it's a passion.

## Our Story

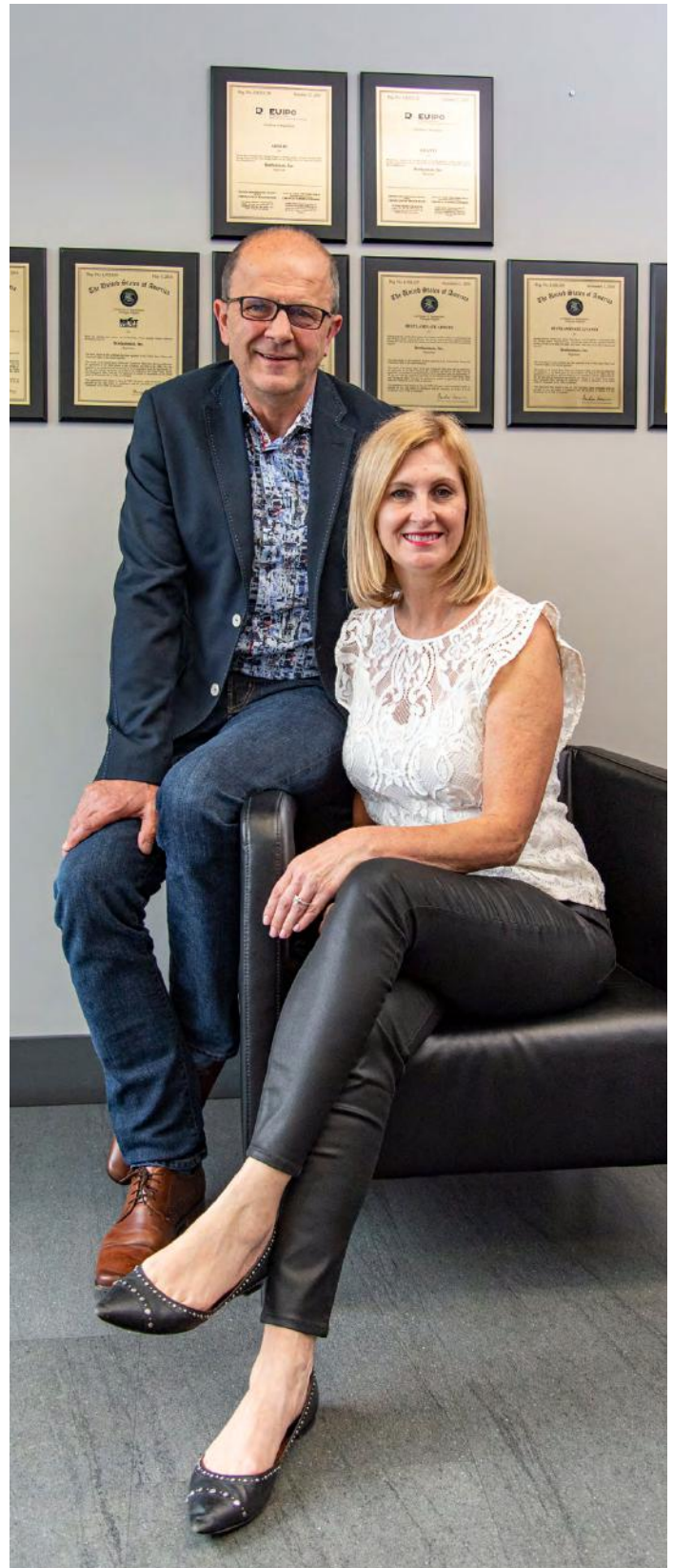
After moving their family from Poland to the United States, founders Remi and Kasia began selling European laminate from their garage to help offset moving costs. A local newspaper ad was all it took to get Bestlaminat<sup>®</sup> started.

Bestlaminat<sup>®</sup> has been innovating since the inception. From multiple retail stores to a robust online shopping experience, we are always striving to give our customers the best products and service available.

## Direct from the Manufacturer to You

Using trusted, high-tech manufacturers, Bestlaminat<sup>®</sup> began producing commercial vinyl flooring at an affordable price in 2017.

[Learn More About Us Here](#)



*Remi and Kasia Swierczek, Bestlaminat Founders in the Willoughby, OH Headquarters*









Let's Get Social!



BLWR-2301-N



# Table of Contents

---

01 - 07: Introduction

08 - 09: SPC Vinyl Flooring Diagram

10 - 17: Vinduri Collection

20 - 51: Livanti Collection

54 - 75: Adduri Collection

76 - 81: Collection Swatches

82 - 83: Moldings

84 - 85: Technical Specifications

86 - 87: Brand Certificates

## Customer Service

---



Call Toll-Free: 1-800-520-0961



Live chat during business hours



Email: [support@bestlaminate.com](mailto:support@bestlaminate.com)



Headquarters & Showroom:  
3900 Ben Hur Ave. Suite 10  
Willoughby, OH 44094

## Free Tools & Resources

---



Free Samples



Gallery Pages



Room Viewer Tool



Help Pages

# Bestlamine® SPC Vinyl Floors

---

Bestlamine® SPC vinyl flooring helps your house look and feel like home. This trademarked flooring provides an unmatched combination of beauty, durability, comfort, and sound reducing performance.



## Performance

Bestlamine® floors are 100% waterproof and manufactured to perform in residential applications, but perfectly suitable for commercial installations as well.



## Lasting Beauty

Our 100% waterproof, kidproof and petproof floors stand up to real life. Quiet and warm underfoot, Bestlamine® provides the ultimate flooring experience.



## Easier Installation

Unilin® technology makes our floors easier to install, whether it's a DIY project or through a professional. Our floors lay directly over most subfloors with very little prep, so you won't have to wait long to start enjoying your new interior!



## GreenGuard Certified

Bestlamine® floors are chemical-free and promote safe indoor air quality. Every floor meets the standards for use in residential spaces, as well as in schools, daycares and commercial applications.



## Style

Bestlamine® floors are as unique as you are! They feature Embossed-In-Register wood texture technology, micro-beveled edges or enhanced painted bevels that offers you the most appealing looks and textures.



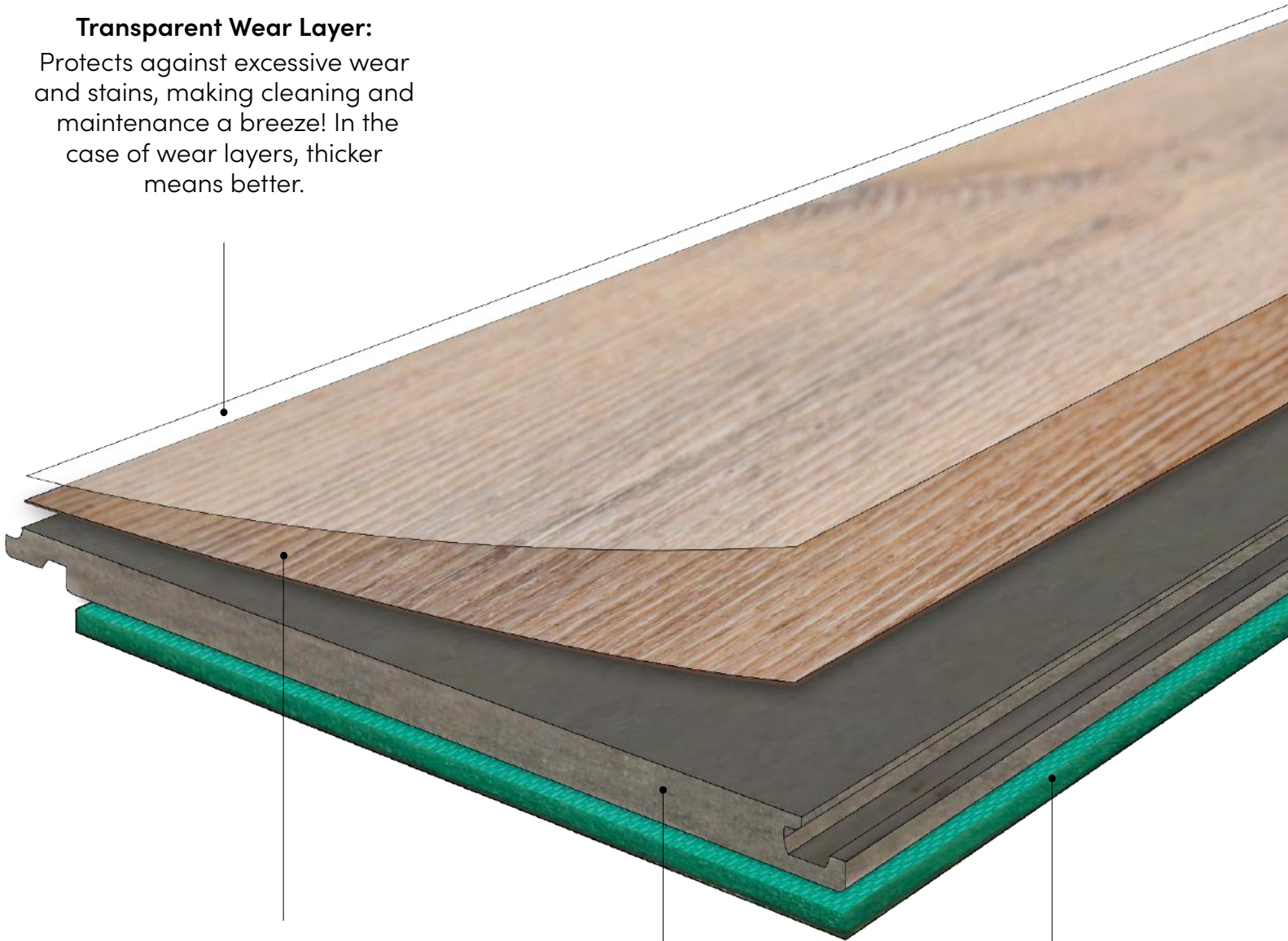
## Warranty

Bestlamine® offers residential and commercial warranties for complete confidence. Most of our floors feature a lifetime residential and 6-year commercial warranty.



**Transparent Wear Layer:**

Protects against excessive wear and stains, making cleaning and maintenance a breeze! In the case of wear layers, thicker means better.



**Luxury Vinyl Top Layer:**

Features on-trend designs, texture and color that makes the vinyl look so much like stone and wood.

**SPC Rigid Core:**

100% waterproof and stable core. SPC stands for Stone Polymer Composite, a limestone core combined with PVC dust and a stabilizer to create an extreme rigid, durable core. SPC floor is 10x more impact resistant than a WPC.

**Pre-Attached Underlayment\*:**

Provides added sound dampening, warmth and comfort underfoot. (\*when applicable)

# BESTLAMINATE VINDURI® SPC VINYL

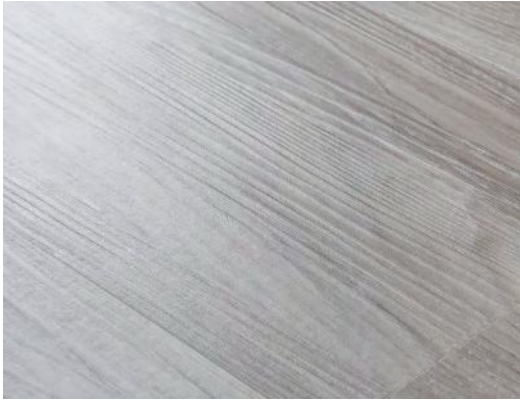
---

The Bestlaminat Vinduri® SPC vinyl collection features diverse decors that can transition from modern to rustic aesthetics.

[Shop All Vinduri® Vinyls >](#)







**Embossed Wood Texturing  
and Square Edges**



**Unilin Click Tap Locking  
System (DIY Friendly)**



**1MM Attached EVA  
Underlayment**



**7.2" x 48"  
183mm x 1220mm**

# High Quality at an Affordable Price

---

The Bestlaminate Vinduri® SPC vinyl collection features diverse decors that can transition from modern to rustic decors!

This collection is DIY friendly with a Unilin click-tap locking system. FloorScore® certified and backed by a 25-year residential / 5-year commercial warranty, you can be confident installing these floors in any space!



100% Waterproof



Scratch, Dent & Chemical Resistant



Family Approved



Pet Proof

[ORDER FREE SAMPLES](#)

[ROOM VIEWER](#)

---



**Upscale Gray**

SKU: BLVI-0100

*\*Viduri Plus*



**Toronto Maple**

SKU: BLVI-0101

*\*Viduri Plus*



**Baltimore Oak**

SKU: BLVI-0102

*\*Viduri Plus*





BLVI-1114



---

**Virginia Pine**  
SKU: BLVI-1103  
*\*Viduri Plus*



---

**Multitone Gray**  
SKU: BLVI-1101-F



---

**Savannah Oak**  
SKU: BLVI-1104-F



---

**Elegant Elm**  
SKU: BLVI-1105



---

**Vintage Oak Brown**  
SKU: BLVI-1106-F



---

**Natural Oak**  
SKU: BLVI-1107-F



---

**Tudor Dark Oak**  
SKU: BLVI-1111-F



---

**Wheat Oak**  
SKU: BLVI-1112



---

**Peruvian Cherry**  
SKU: BLVI-1113





---

**Vintage Oak Gray**  
SKU: BLVI-1108-F



---

**Honey Oak**  
SKU: BLVI-1109-F



---

**Vintage Oak White**  
SKU: BLVI-1110F



---

**Aspen Gray Oak**  
SKU: BLVI-1114



---

**New Barn Oak**  
SKU: BLVI-1115

# BESTLAMINATE VINDURI® FEATURES

VINDURI® COLLECTION	PRODUCT SPECIFICATIONS
Plank Length	48"
Plank Width	7.2"
Thickness	4.5mm (5mm for Vinduri Plus)
Core Type	3.5mm SPC Core (4mm for Vinduri Plus)
Wear Layer	0.30mm/12mil
Underlayment	1mm Attached EVA Foam
Texture	Embossed Wood Texture
Edge Type	Square
Installation	Unilin Click/Tap
Warranty	25-Year Residential / 5-Year Commercial

The Bestlaminat Vinduri® SPC Vinyl collection was made with your family in mind. The Vinduri® vinyls are FloorScore® certified for safe indoor air quality and are 100% waterproof to allow for a kid and pet accident proof surface!



With the rigid core construction and 12mil wear layer, you also get a scratch, dent and chemical resistant surface. The attached EVA padding adds comfort underfoot, as well as aiding in noise reduction. No additional underlayment is needed with these floors!



Chat live with a flooring expert during customer service hours.



# PACKAGING

VINDURI® COLLECTION	PER BOX	PER PALLET
Size	7.75" x 48.75"	38.75" x 48.75" x 20"
Weight	36.5lbs.	2,007.5lbs.
Number of Planks	10 pcs.	55 bxs.
Square Feet	24.02 sqft.	1,321.1 sqft.



Like what you see? Order up to 5 Free Samples!  
No credit card required.





# BESTLAMINATE ROOM VIEWER

---

Picture your favorite floors in your own home! Our room viewer tool can help you visualize your project and pick the perfect floor for your space.

It's simple & easy to use - follow these 3 steps!

## STEP 1: UPLOAD YOUR ROOM

Upload your room or use one of our pre-loaded images. The visualizer works on desktop and mobile!

## STEP 2: SELECT YOUR FLOOR

This is the fun part! Select your favorite looks to pop into each room. You can change the direction of the flooring, filter by collections, brands, colors and more!

## STEP 3: GET FLOORING DETAILS

After you find the perfect look, you can order a sample or head to the product page for more details. You can also save the room photos and share your looks via email or social media!

**TRY IT OUT**

# BESTLAMINATE LIVANTI<sup>®</sup> SPC VINYL

---

The Bestlaminate<sup>®</sup> Livanti<sup>®</sup> floors are made for living. From soft grays to authentic wood looks, these floors are sure to please! The Livanti<sup>®</sup> collection is 100% waterproof with an SPC rigid core construction and attached padding.

*This collection includes four stunning sub-collections:*

## **NAUTICAL**

A modern coastal collection that can create an everyday paradise in your home. The perfect floor for a beach or lake home!

## **WOODRIDGE**

A sophisticated collection of popular real wood decors that can easily transition for any design style.

## **RECLAIMED**

A collection filled with character! These reclaimed floors will make a statement in any room.

## **STONE & STONE HD:**

Popular stone looks transformed into 100% waterproof vinyls! Add to any room for a beautiful tile look.

[Shop All Livanti Floors >](#)







# BESTLAMINATE LIVANTI® NAUTICAL

---

The Bestlaminat® Livanti® Nautical flooring features popular designs that embody the coast! Whitewashed and unique, these floors will add personality to your spaces.

[Shop All Livanti® Nautical Vinyls >](#)







Embossed Wood Texture  
with 4V Painted Bevel Edges



Unilin Click Tap Locking  
System (DIY Friendly)



1MM Attached IXPE  
Underlayment

7.2" x 48"  
183mm x 1220mm



# Modern Meets Coastal

---

The Bestlaminate Livanti® Nautical collection features exclusive designs you won't find anywhere else!

With a durable, 100% waterproof plank, you can be confident in installing this in water-prone areas, as well as beach and lake homes! A perfect option for residential and commercial spaces alike.



100% Waterproof



Scratch, Dent & Chemical Resistant



Lifetime Warranty



Pet & Child Proof

[ORDER FREE SAMPLES](#)

[ROOM VIEWER](#)

---



**Cottage Driftwood**  
SKU: BLNT-2101



**Kon-Tiki Tropic**  
SKU: BLNT-2102



**Carbonized Driftwood**  
SKU: BLNT-2103





BLNT-2101



**Stormy Sky Gray**  
SKU: BLNT-2104



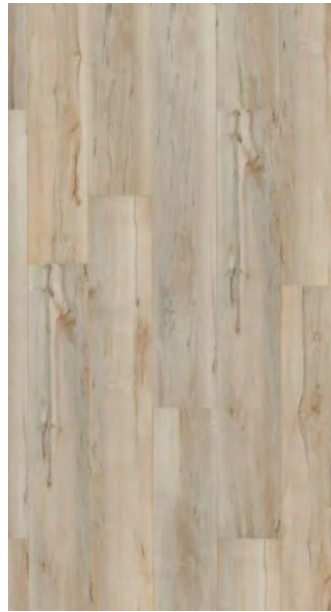
**Weathered Cottage**  
SKU: BLNT-2106



**Bleached Pine**  
SKU: BLNT-2107



**Shabby Chic White**  
SKU: BLNT-2108



**Resort Maple**  
SKU: BLNT-2109



BLNT-2102





BLNT-2109

# BESTLAMINATE LIVANTI® NAUTICAL

LIVANTI® COLLECTION	PRODUCT SPECIFICATIONS
Plank Length	48"
Plank Width	7.2"
Thickness	5mm
Core Type	4mm SPC Core
Wear Layer	0.30mm/12mil
Underlayment	1mm Attached IXPE Foam
Texture	Embossed Wood Texture
Edge Type	4V Painted Bevel
Installation	Unilin Click/Tap
Warranty	Lifetime Residential / 6-Year Commercial

The Bestlaminat Livanti® Nautical SPC vinyl collection is the perfect option for any nautical interior design, lake house or beach house. With a 100% waterproof construction, you can install this floor in foyers, bathrooms, kitchens and basements without any worry!



This collection also features a tough, 4mm SPC core with attached IXPE underlayment for comfort underfoot. Every plank is FloorScore® certified for safe indoor air quality and comes with a lifetime residential warranty.



Have vinyl flooring questions? Visit our Help Pages for Answers.



# FEATURES & PACKAGING

LIVANTI® COLLECTION	PER BOX	PER PALLET
Size	8" x 48.75"	40" x 48.75 x 20"
Weight	41 lbs.	2,255 lbs.
Number of Planks	10 pcs.	55 bxs.
Square Feet	24.02 sqft.	1,321.1 sqft.



Try the floors in your rooms with our room visualizer tool!



# BESTLAMINATE LIVANTI® WOODRIDGE

---

The Bestlaminate® Livanti® Woodridge collection features realistic wood designs that have a special embossed texture for an authentic hardwood look without the hassle!

[Shop All Livanti® Woodridge Vinyls >](#)





Embossed Wood Texture  
and 4V Painted Bevel Edges



Unilin Click Tap Locking  
System (DIY Friendly)



1MM Attached IXPE  
Underlayment



7.2" x 48"  
183mm x 1220mm

# Natural Beauty

---

The Bestlaminat® Livanti® Woodridge collection features authentic wood grain patterns that are inspired by nature, but designed with high style in mind.

From light to dark shades, the Woodridge collection has variety, beauty and durability for long lasting comfort in residential or commercial spaces. These waterproof planks are built to last, just like hardwoods!



100% Waterproof



Scratch, Dent & Chemical Resistant



Family Approved



Pet Proof

[ORDER FREE SAMPLES](#)

[ROOM VIEWER](#)

---



**Northern Oak**

SKU: BLWR-2301-N



**Aspen Black Oak**

SKU: BLWR-2305



**Summer Sands Oak**

SKU: BLWR-2307





BLWR-2301-N



---

**Natural Pine**  
SKU: BLWR-2308



---

**Natural Hickory**  
SKU: BLWR-2309



---

**Big Sky Oak**  
SKU: BLWR-2310v





**Summer Tan Oak**  
SKU: BLWR-3203-F



BLWR-3203-F



BLWR-2310v





BLWR-2307

# BESTLAMINATE LIVANTI® WOODRIDGE

LIVANTI® COLLECTION	PRODUCT SPECIFICATIONS
Plank Length	48"
Plank Width	7.2"
Thickness	5mm
Core Type	4mm SPC Core
Wear Layer	0.30mm/12mil
Underlayment	1mm Attached IXPE Foam
Texture	Embossed Wood Texture
Edge Type	4V Painted Bevel
Installation	Unilin Click/Tap
Warranty	Lifetime Residential / 6-Year Commercial

The Bestlaminat Livanti® Woodridge SPC Vinyl collection is an excellent choice for homes and businesses alike. With a 5mm SPC construction and attached IXPE foam underlayment, you receive a highly dense and durable floor with a cushioned feel. Perfect for installation in cafes, kitchens, bathrooms, basements and more!



This collection is backed by FloorScore® for safe indoor air quality and includes a lifetime residential and 6 year commercial warranty.



Get inspired by customer Before and Afters on our Gallery pages!



# FEATURES & PACKAGING

LIVANTI® COLLECTION	PER BOX	PER PALLET
Size	7.75" x 48.75"	38.75" x 48.75" x 20"
Weight	45 lbs.*	2,255 lbs.*
Number of Planks	10 pcs.*	60 bxs.
Square Feet	24.02 sqft.*	1,321.1 sqft.*

\*BLWR-2304 and BLWR-2302 have 18.91 sqft and 8 planks/box and 41lbs/box. Per pallet: 1,134.6 sqft and 2,460 lbs.



Find flooring comparisons, installation instructions & more on our Help Pages!

# BESTLAMINATE LIVANTI® RECLAIMED

---

The Bestlaminat Livanti® Reclaimed collection is a rustic lover's dream! These planks feature designs with color variations, knots and grains to create a one-of-a-kind look.

[Shop All Livanti® Reclaimed Vinyls >](#)







Embossed Wood Texture  
with Square Edges



Unilin Click Tap Locking  
System (DIY Friendly)



1MM Attached IXPE  
Underlayment



7.2" x 48"  
183mm x 1220mm

# Reclaimed Character

---

The Bestlaminate Livanti® Reclaimed collection features 4 styles with slight variations in color and pattern. If you're looking to add character to your rooms, look no further than these planks!

The Reclaimed collection is 100% waterproof and can be installed in any room to create a rustic, cabin, cottage or farmhouse look!



100% Waterproof



Scratch, Dent & Chemical Resistant



Lifetime Warranty



Pet & Child Proof

[ORDER FREE SAMPLES](#)

[ROOM VIEWER](#)

---



**Prairie Earthtones**

SKU: BLRE-2201



**Sunset Earthtones**

SKU: BLRE-2202



**Charcoal Earthtones**

SKU: BLRE-2203





BLRE-2202



**Whitewashed Earthtones**  
SKU:BLRE-2204

FREE SAMPLES

*Order up to  
5 samples  
absolutely free!*

**ORDER SAMPLES**

# BESTLAMINATE LIVANTI® RECLAIMED

LIVANTI® COLLECTION	PRODUCT SPECIFICATIONS
Plank Length	48"
Plank Width	7.2"
Thickness	5mm
Core Type	4mm SPC Core
Wear Layer	0.30mm/12mil
Underlayment	1mm Attached IXPE Foam
Texture	Embossed Wood Texture
Edge Type	Square
Installation	Unilin Click/Tap
Warranty	Lifetime Residential / 6-Year Commercial

Whatever interior space you want to install the Bestlaminatē Livanti® Reclaimed SPC vinyl collection in, this floor will last! With a 4mm SPC core and 12mil wear layer, this plank is commercially rated for durability. It is also 100% waterproof and certified by FloorScore® for safe indoor air quality.



The Unilin locking system allows for easy, DIY installation without many tools. A lifetime residential and 6 year commercial warranty are included with this flooring collection.



Full plank samples available for \$10. Request online, by phone or email!



# FEATURES & PACKAGING

LIVANTI® COLLECTION	PER BOX	PER PALLET
Size	7.75" x 48.75"	38.75" x 48.75" x 20"
Weight	41 lbs.	2,255 lbs.
Number of Planks	10 pcs.	55 bxs.
Square Feet	24.02 sqft.	1,321.1 sqft.



Visit our showroom or pick up flooring if you're near Willoughby, OH.

# BESTLAMINATE LIVANTI® STONE

The Bestlaminate® Livanti® Stone Collection is the new way to install tile flooring! With DIY installation and no grout required, you can have a beautiful, waterproof surface with less time and money!

[Shop All Livanti® Stone Vinyls >](#)

BLST-2509





**Stone Texture**



**Unilin Click Tap Locking System (DIY Friendly)**



**Kissed Edges**

**12" x 24"**  
**305mm x 610mm**



# Upscale Stone Tiles

---

If you've been looking for a stone tile alternative, the Bestlaminat<sup>®</sup> Livanti<sup>®</sup> Stone Collection is for you! Modeled after the most popular tile and stone looks, this collection features a broad range of designs, from marble to mosaic.

Durable, comfortable and stylish - this collection is a sophisticated choice for kitchens, foyers, baths and basements.



100% Waterproof



Scratch, Dent & Chemical Resistant



Family Approved



Pet Proof

[ORDER FREE SAMPLES](#)

[ROOM VIEWER](#)

---



**Alicante Sandstone**

SKU: BLST-2501S



**Fossil Gray**

SKU: BLST-2502S



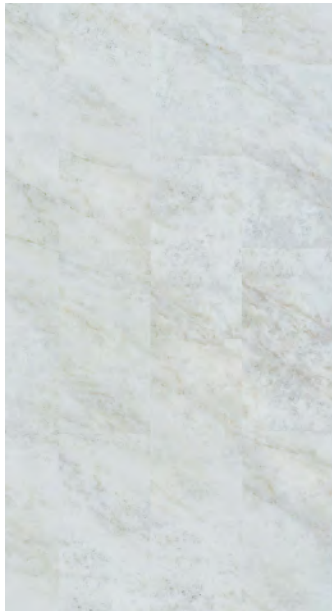
**Antique Marble**

SKU: BLST-2504S



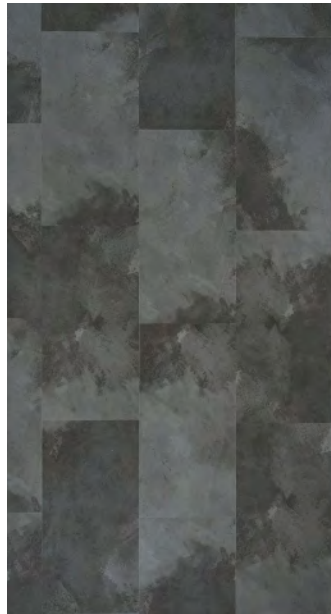


BLST-2514



---

**White Marble**  
SKU: BLST-2505S



---

**Concrete Dark**  
SKU: BLST-2507



---

**Concrete Light**  
SKU: BLST-2508S





---

**Kaleidoscope Gray  
Gatsby**  
SKU: BLST-2509



---

**Cordoba Slate**  
SKU: BLST-2514







BLST-2514

# BESTLAMINATE LIVANTI® STONE

LIVANTI® COLLECTION	PRODUCT SPECIFICATIONS
Plank Length	24"
Plank Width	12"
Thickness	5mm
Core Type	5mm SPC Core
Wear Layer	0.50mm/20mil
Underlayment	1mm Underlayment
Texture	Stone Texture
Edge Type	Kissed Edges
Installation	Unilin Click/Tap
Warranty	Lifetime Residential / 10-Year Commercial

A stone alternative that offers high durability, surface resistance and comfort. The Bestlaminat Livanti® Stone Collection features a 20mil, commercial wear layer with 4mm SPC core for a tough, long lasting surface. These tiles are 100% waterproof and certified by FloorScore® for safe indoor air quality. These can not only be installed on the floor, but as walls and backsplashes.



The Unilin locking system allows for easy, DIY installation with a lifetime residential and 6 year commercial warranty.



101 of the most common customer questions, answered on the blog!



# FEATURES & PACKAGING

LIVANTI® COLLECTION	PER BOX	PER PALLET
Size	12.75" x 24.75"	38.25" x 49.5" x 12"
Weight	41 lbs.	2,460 lbs.
Number of Planks	12 pcs.	60 bxs.
Square Feet	23.9 sqft.	1,434 sqft.



See how your favorite looks will look in your spaces with our room viewer.

# BESTLAMINATE® GALLERY

---

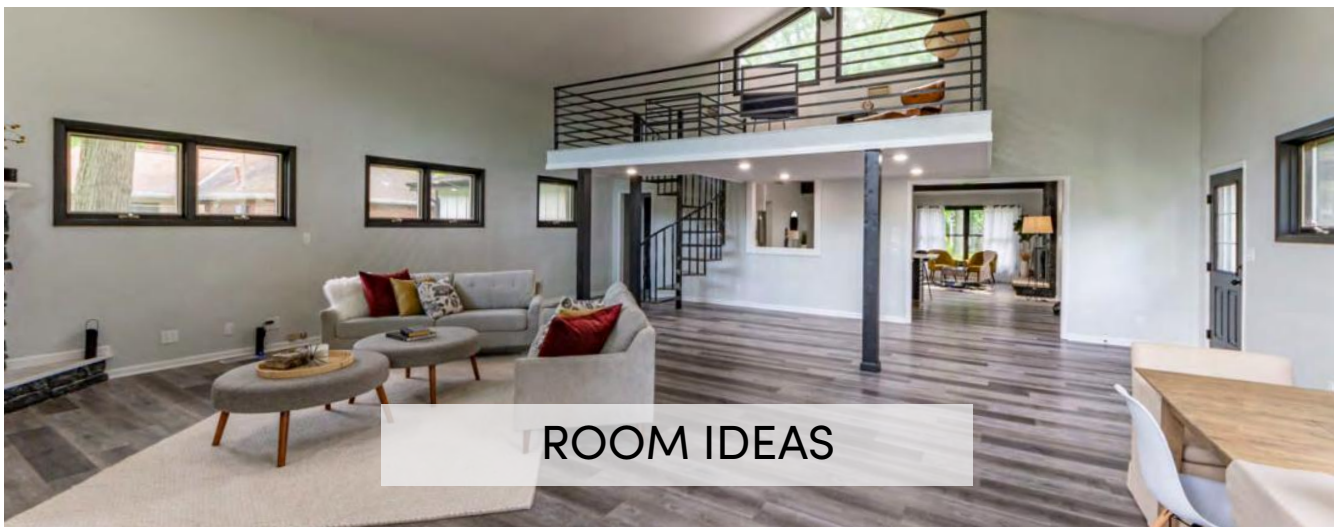
Our Gallery hosts a variety of inspirational content from our professional and residential customers. Tour stunning homes, customer before and afters and room-inspired looks.







**BEFORE & AFTERS**



**ROOM IDEAS**



**HOME TOURS**

**[GO TO GALLERY >](#)**



# BESTLAMINATE ADDURI®

---

The Bestlaminat® Adduri® Collection features top of the line vinyls with specialized embossed texture for an authentic wood finish. These vinyl floors are extremely durable with a soft feel underfoot.

[Shop All Adduri® Vinyls >](#)





Embossed Wood Texturing  
with Square Edges



Unilin Click Tap Locking  
System (DIY Friendly)



1MM Attached IXPE  
Underlayment



7.2" x 48"  
183mm x 1220mm

# High-End Vinyl Planks

---

The Bestlaminat Adduri® SPC Vinyl Collection is the new standard of luxury vinyl. With commercial durability, embossed texturing and attached underlayment, you're getting a high-end combination without the high price tag.

This diverse range of decors features our best selling colors for a variety of design styles and home decors. Go modern, traditional, coastal or farmhouse with these planks!



100% Waterproof



Scratch, Dent & Chemical Resistant



Lifetime Warranty



Pet & Child Proof

[ORDER FREE SAMPLES](#)

[ROOM VIEWER](#)

---



**New Greige Oak**

SKU: BLAD-3105



**Anthracite Oak**

SKU: BLAD-3102



**Red Spalted Hickory**

SKU: BLAD-3103





BLAD-3104



**Classic Coastal Beige**  
SKU: BLAD-3104

ROOM VIEWER

*See our floors  
in your home  
using the room  
viewer!*

**TRY IT NOW**

# BESTLAMINATE ADDURI®

ADDURI® COLLECTION	PRODUCT SPECIFICATIONS
Plank Length	48"
Plank Width	7.2"
Thickness	5mm
Core Type	4mm SPC Core
Wear Layer	0.50mm/20mil
Underlayment	1mm Attached IXPE Foam
Texture	Embossed Wood Texture
Edge Type	Square Edge
Installation	Unilin Click/Tap
Warranty	Lifetime Residential / 6-Year Commercial

The Bestlaminat Adduri® SPC vinyl collection is not only beautiful, but busy household approved. They feature a DIY friendly Unilin Click/Tap installation system, so you can achieve professional flooring results without any help!

The floors come with a lifetime residential and 6-year commercial warranty. With the plank technology and SPC core, these floors will look beautiful for years to come. They are FloorScore® certified for safe indoor air quality.

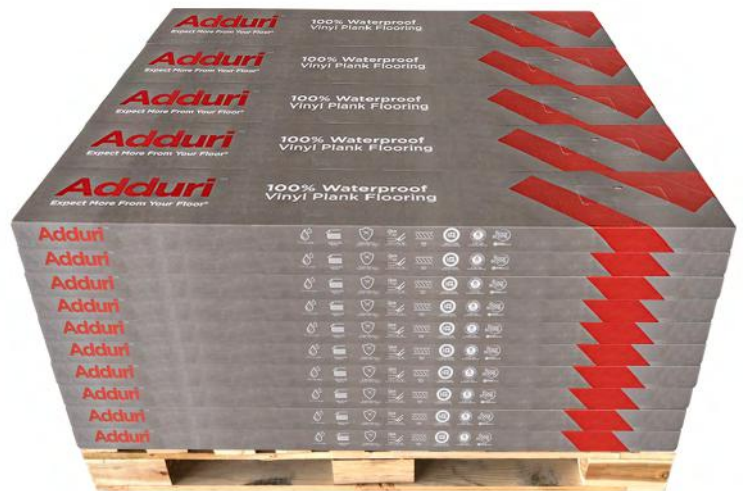


Flooring experts are available toll free at 1-800-520-0961.



# FEATURES & PACKAGING

ADDURI® COLLECTION	PER BOX	PER PALLET
Size	7.75" x 48.75"	38.75" x 48.75" x 20"
Weight	41 lbs.	2,255 lbs.
Number of Planks	10 pcs.	55 bxs.
Square Feet	24.02 sqft.	1,321.1 sqft.



Get inspired by our Dream Home Tours on our Gallery page.

# Elegant Herringbone

---

The Bestlaminate Adduri® Herringbone SPC Vinyl is the durable way to get a high-end, patterned wood look! In four modern colors, this collection will instantly elevate any space - from bathroom to kitchen.

From soft gray to authentic wood, these herringbone planks are quiet and soft under foot with attached underlayment, stand up to scratches and dents and provide a waterproof surface safe for any room.



100% Waterproof



Scratch, Dent & Chemical Resistant



25 Year Residential Warranty



Pet & Child Proof

[ORDER FREE SAMPLES](#)

[ROOM VIEWER](#)

---



**Natural Oak DR**  
SKU: BLAD-3501



**Caramel Oak DR**  
SKU: BLAD-3502



**Cappuccino Oak DR**  
SKU: BLAD-3503





BLAD-3503



**Parisienne Oak DR**  
SKU: BLAD-3504

ROOM VIEWER

*See our floors  
in your home  
using the room  
viewer!*

**TRY IT NOW**

# BESTLAMINATE ADDURI<sup>®</sup> HERRINGBONE

ADDURI <sup>®</sup> COLLECTION	PRODUCT SPECIFICATIONS
Plank Length	4.9"
Plank Width	23.62"
Thickness	6mm
Core Type	5mm SPC Core
Wear Layer	0.50mm / 20 mil
Underlayment	1mm Attached IXPE Foam
Texture	Textured Wood
Edge Type	Bevel
Installation	Unilin Click/Tap
Warranty	25 Year Residential / 6-Year Commercial

The Bestlaminat Adduri<sup>®</sup> Herringbone SPC vinyl collection is a stunning replication of the traditional hardwood planks. These are packaged as individual planks, and require the pattern to be determined by the installer. Installation is DIY friendly with the Unilin locking system.



The floors come with a 25-year limited residential and 6-year light commercial warranty, and include a 1mm IXPE foam underlayment to give comfort and eliminate sound underfoot. If you're looking for the elegant, traditional look of herringbone hardwoods, look no further than these vinyl planks!

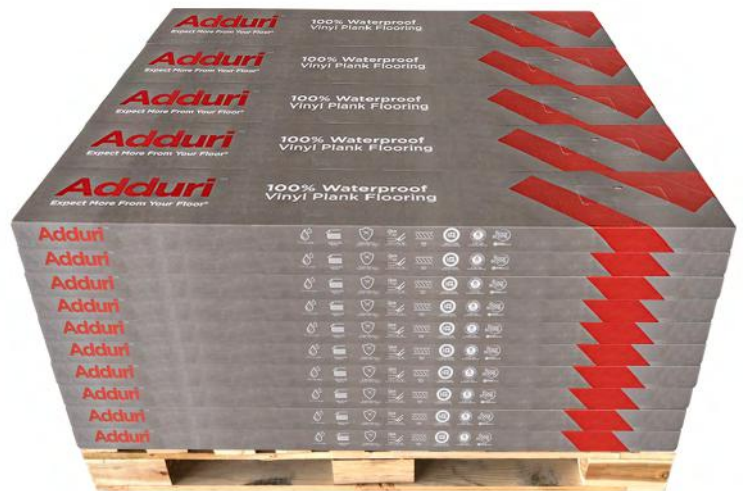


Flooring experts are available toll free at 1-800-520-0961.



# FEATURES & PACKAGING

ADDURI® COLLECTION	PER BOX	PER PALLET
Size	?	?
Weight	20 lbs.	?
Number of Planks	20 pcs.	?
Square Feet	16.14 sqft.	?



Get inspired by our Dream Home Tours on our Gallery page.

# BESTLAMINATE ADDURI® HD

---

The Bestlaminat® Adduri® HD collection has been created with the goal to impress! The embossed in register technology creates an unbelievable texture and the SPC core offers commercial durability.

[Shop All Adduri® HD Vinyls >](#)







Embossed-In-Register  
Wood Texture with 4V Painted  
Bevel



Unilin Click Tap Locking  
System (DIY Friendly)



1MM Attached IXPE  
Underlayment

7.2" x 48"  
183mm x 1220mm



# The Best of the Best

---

With the Bestlaminate Adduri® HD collection, you're truly getting the best of the best in vinyl flooring. This affordable flooring line is the ideal solution for commercial and residential projects.

The Adduri® HD planks are absolutely gorgeous and feature 5 natural decors that are diverse and in-style. These floors will add warmth and character to your spaces.



100% Waterproof



Scratch, Dent & Chemical Resistant



Family Approved



Pet Proof

[ORDER FREE SAMPLES](#)

[ROOM VIEWER](#)

---



---

**Sherwood  
Weathered Oak**  
SKU: BLADH-3201



---

**Stonebrook Oak**  
SKU: BLADH-3202



---

**Lexington Oak**  
SKU: BLADH-3203





BLADH-3204



---

**European White Oak**  
SKU: BLADH-3204



---

**English Post Oak**  
SKU: BLADH-3205

# BESTLAMINATE ADDURI® HD

ADDURI® COLLECTION	PRODUCT SPECIFICATIONS
Plank Length	48"
Plank Width	7.2"
Thickness	5mm
Core Type	4mm SPC Core
Wear Layer	0.5mm/20mil
Underlayment	1mm Attached IXPE Foam
Texture	Embossed-In-Register Texture
Edge Type	4V Painted Bevel
Installation	Unilin Click/Tap
Warranty	Lifetime Residential / 6-Year Commercial

The Bestlaminat<sup>®</sup> Adduri<sup>®</sup> HD collection is realistic, easy to install and extremely durable. These planks are the best your money can buy!

With a 4mm SPC core, these planks have a stable, stone-composite core that boasts limited to no movement with moisture and temperature changes. The Unilin locking system makes these planks DIY friendly and involves minimal tools.



The planks are FloorScore<sup>®</sup> certified for healthy air emissions. Be confident with a lifetime residential warranty.

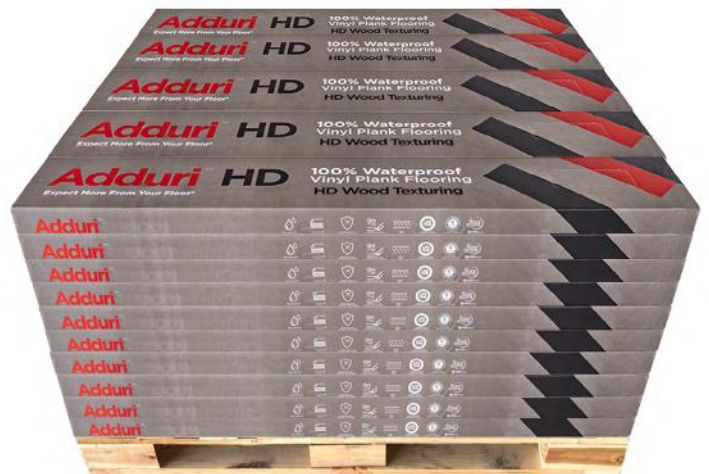


Sign up for our email list to be the first to know about our weekly sales!



# FEATURES & PACKAGING

ADDURI® COLLECTION	PER BOX	PER PALLET
Size	7.75" x 48.75"	38.75" x 48.75" x 20"
Weight	41 lbs.	2,255 lbs.
Number of Planks	10 pcs.	55 bxs.
Square Feet	24.02 sqft.	1,321.1 sqft.



Builder, developer or professional?  
Contact us for bulk pricing.



# BESTLAMINATE ADDURI® HD XL

The Bestlaminat® Adduri® HD XL Collection combines all of the features of the HD collection with a larger plank size. These popular decors mimic authentic hardwood floors with knots, grains and an embossed texture.

[Shop All Adduri® HD XL Vinyls >](#)







Embossed-In-Register Texture  
with 4V Painted Bevel Edges



Unilin Click Tap Locking  
System (DIY Friendly)



1MM Attached IXPE  
Underlayment



9" x 60"  
228mm x 1524mm

# The Ultimate Vinyl Plank

---

The Bestlaminat Adduri® HD XL collection features 4 natural looks ranging from brown to gray hues. These popular decors mimic authentic wood floors with knots, grains and an embossed texture.

These waterproof floors are sure to fool your guests and make your space shine!  
Order free samples to see the texture, pattern and durability for yourself.



100% Waterproof



Scratch, Dent &  
Chemical Resistant



Lifetime Warranty



Pet & Child  
Proof

[ORDER FREE SAMPLES](#)

[ROOM VIEWER](#)



---

**Elbrus Oak**  
SKU: BLADH-3301



---

**Siberian Oak**  
SKU: BLADH-3302



---

**Tundra Oak**  
SKU: BLADH-3303





BLADH-3302



**Petersburg Oak**  
SKU: BLADH-3304

GALLERY

*Tour these homes and projects from our customers!*

**GET INSPIRED**

# BESTLAMINATE ADDURI® HD XL

ADDURI® COLLECTION	PRODUCT SPECIFICATIONS
Plank Length	60"
Plank Width	9"
Thickness	5mm
Core Type	4mm SPC Core
Wear Layer	0.20mm/20mil
Underlayment	1mm Attached IXPE Foam
Texture	Embossed-In-Register Texture
Edge Type	4V Painted Bevel
Installation	Unilin Click/Tap
Warranty	Lifetime Residential / 6-Year Commercial

The Bestlaminat<sup>®</sup> Adduri<sup>®</sup> HD XL collection offers larger planks and authentic wood looks. These planks come with a 20mil commercial wear layer and 4mm SPC core.

Attached IXPE foam underlayment gives these sturdy planks comfort underfoot. Easy installation and a lifetime warranty make these planks an effortless choice.

Like our other collections, the Adduri HD XL collection is also FloorScore<sup>®</sup> certified and approved for safe air quality and emissions.

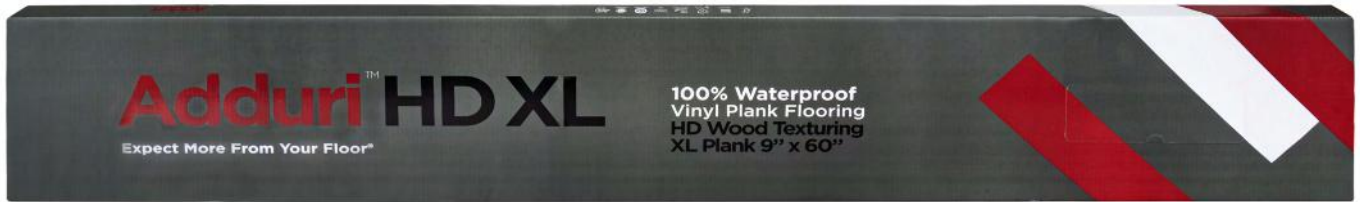


Find flooring tips from A to Z on our Help pages!



# FEATURES & PACKAGING

ADDURI® COLLECTION	PER BOX	PER PALLET
Size	9.75" x 60.75"	48.75" x 60.75" x 22.5"
Weight	51 lbs.	3,570 lbs.
Number of Planks	6 pcs.	70 bxs.
Square Feet	22.53 sqft.	1,577.1 sqft.



Order up to 5 Free Samples of your favorite floors!  
No credit card required.



**Vinduri Multitone Gray**



**Vinduri Savannah Oak**



**Vinduri Elegant Elm**



**Vinduri Vintage Oak Brown**



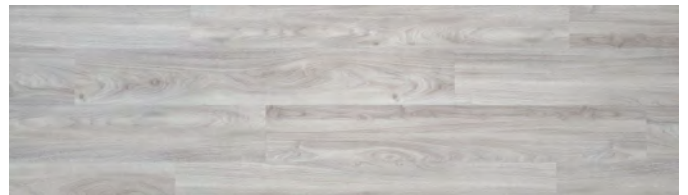
**Vinduri Natural Oak**



**Vinduri Vintage Oak Gray**



**Vinduri Honey Oak**



**Vinduri Vintage Oak White**



**Vinduri Tudor Oak**



**Vinduri Wheat Oak**



**Vinduri Peruvian Cherry**



**Vinduri Aspen Gray Oak**



**Vinduri New Barn Oak**



**Vinduri Plus Upscale Gray**





**Vinduri Plus** Toronto Maple



**Vinduri Plus** Baltimore Oak



**Vinduri Plus** Virginia Pine



**Livanti Nautical** Cottage Driftwood



**Livanti Nautical** Kon-Tiki Tropic



**Livanti Nautical** Carbonized Driftwood



**Livanti Nautical** Bleached Pine



**Livanti Nautical** Shabby Chic White



**Livanti Nautical** Resort Maple



**Livanti Reclaimed** Prairie Earthtones



**Livanti Reclaimed** Sunset Earthtones



**Livanti Reclaimed** Charcoal Earthtones



**Livanti Reclaimed** Whitewashed Earthtones



**Livanti Woodridge** Northern Oak



**Livanti Woodridge** Aspen Black Oak



**Livanti Woodridge** Summer Tan Oak



**Livanti Woodridge** Natural Pine



**Livanti Woodridge** Natural Hickory



**Livanti Woodridge** Big Sky Oak



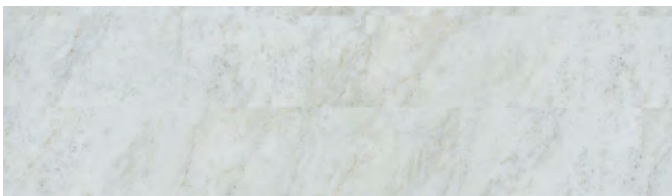
**Livanti Stone** Alicante Sandstone



**Livanti Stone** Stone Fossil Grey



**Livanti Stone** Antique Marble



**Livanti Stone** Antique Marble



**Livanti Stone** Concrete Dark



**Livanti Stone** Concrete Light



**Livanti Stone** Kaleidoscope Gray Gatsby



**Livanti Stone** Cordoba Slate





**Adduri Anthracite Oak**



**Adduri Red Spalted Hickory**



**Adduri Classic Coastal Beige**



**Adduri New Greige Oak**



**Adduri HD Sherwood Weathered Oak**



**Adduri HD Stonebook Oak**



**Adduri HD Lexington Oak**



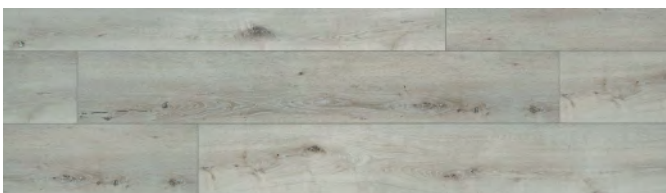
**Adduri HD European White Oak**



**Adduri HD English Post Oak**



**Adduri HD XL Elbrus Oak**



**Adduri HD XL Siberian Oak**



**Adduri HD XL Tundra Oak**



**Adduri HD XL Petersburg**



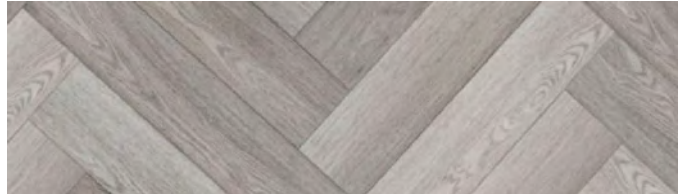
**Adduri Herringbone** Natural Oak DR



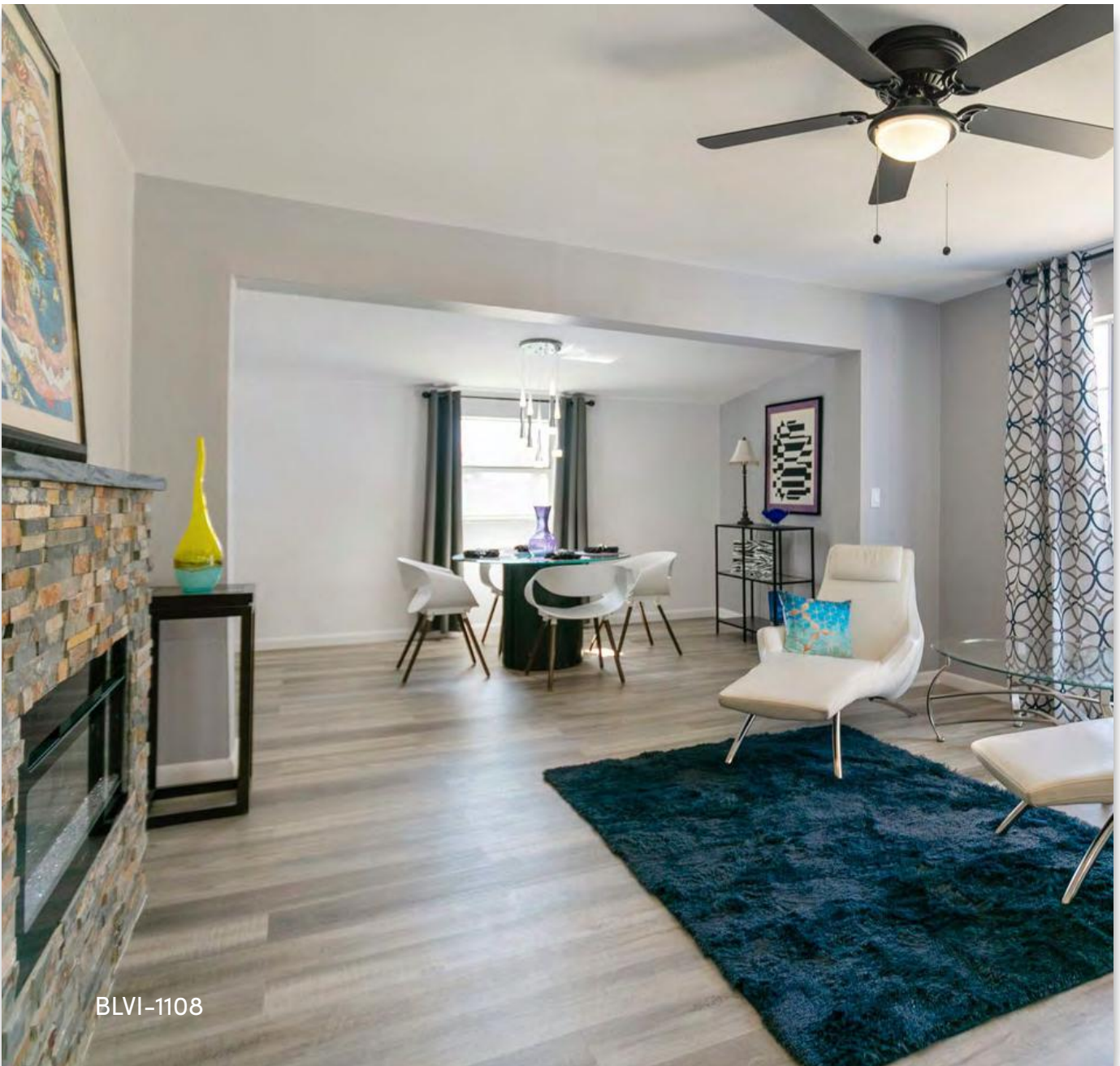
**Adduri Herringbone** Caramel Oak DR



**Adduri Herringbone** Cappuccino Oak DR



**Adduri Herringbone** Natural Parisienne Oak DR



BLVI-1108





BLWR-2301-N



# BESTLAMINATE® MOLDINGS & TRIM

---

Finishing your project is just as important as the other steps!  
Bestlaminate® carries moldings that are close color matches to our  
collection of vinyls as well as standard white.

[Shop Accessories >](#)



Wall Base & Quarter Round Moldings





## QUARTER ROUND MOLDING

Quarter Round Moldings are used to hide perimeter edge gaps on walls, cabinetry and built-ins for a cohesive look.

Size: 94" x  $\frac{3}{4}$ " x  $\frac{3}{4}$ "

---



## UNIVERSAL T-MOLDING & REDUCER

T-Moldings and Reducers are used to transition from door frames or surfaces of the same height or slightly different heights.

Size: 94" x 2" x  $\frac{1}{4}$ "

---



## END CAP MOLDING

End Cap Moldings are used to create an edge for outside doors, fireplaces and vinyl to carpet transitions.

Size: 94" x  $1\frac{3}{8}$ " x  $\frac{3}{8}$ "

---



## STAIR NOSE MOLDING

Stair Nose Moldings are used to cap the edges of each step, hiding gaps and creating a sleek look.

Size: 94" x 2" x 1"

# COLLECTION TECHNICAL SPECIFICATIONS

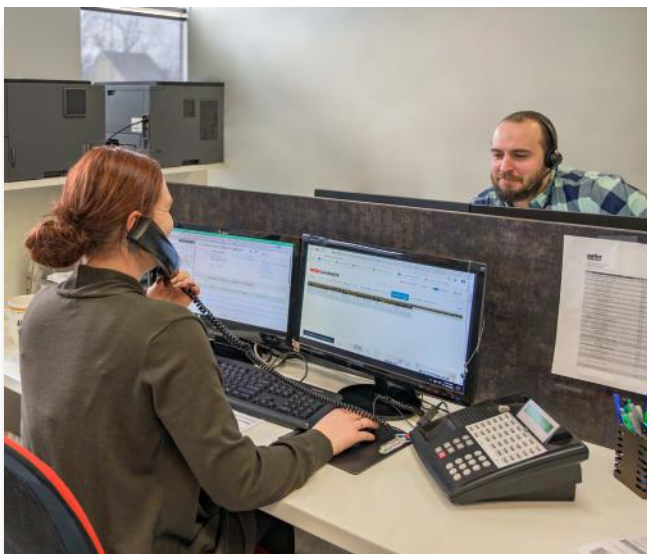
Collection	Thickness	Core	Underlayment Attached	Wear Layer
Vinduri	4.5mm	3.5mm SPC	1mm EVA	12mil/0.3mm
Livanti Nautical	5mm	4mm SPC	1mm IXPE	12mil/0.3mm
Livanti Reclaimed	5mm	4mm SPC	1mm IXPE	12mil/0.3mm
Livanti Woodridge	5mm	4mm SPC	1mm IXPE	12mil/0.3mm
Livanti Stone	5mm	4mm SPC	1mm	20mil /0.5mm
Adduri	5mm	4mm SPC	1mm IXPE	20mil /0.5mm
Adduri HD	5mm	4mm SPC	1mm IXPE	20mil/0.5mm
Adduri HD XL	5mm	4mm SPC	1mm IXPE	20mil/0.5mm

## PACKAGING DETAILS

Collection	SqFt/Box	Planks/Box	Weight/Box	Boxes/Pallet
Vinduri	24.02	10	36.5	55
Livanti Nautical	24.02	10	41	55
Livanti Reclaimed	24.02	10	41	55
Livanti Woodridge	18.91 / 24.02	8/ 10	45 / 41	60
Livanti Stone	23.9	12	41	60
Adduri	24.02	10	21	55
Adduri HD	24.02	10	21	55
Adduri HD XL	22.53	6	51	70



Edge Type	Texture	Plank Size (W x L)	Warranty	Locking System
Square	Embossed Wood	7.2"x48"	25 Year Residential / 5 Year Light Commercial	Unilin
4V Painted Bevel	Embossed Wood	7.2"x48"	Lifetime Residential / 6 Year Light Commercial	Unilin
Square	Embossed Wood	7.2"x48"	Lifetime Residential / 6 Year Light Commercial	Unilin
4V Painted Bevel	Embossed Wood	7.2"x48"	Lifetime Residential / 6 Year Light Commercial	Unilin
Kissed Edges	Stone	12"x24"	Lifetime Residential / 10 Year Light Commercial	Unilin
Square	Embossed Wood	7.2"x48"	Lifetime Residential / 6 Year Light Commercial	Unilin
4V Painted Bevel	Embossed-In-Register (EIR)	7.2"x48"	Lifetime Residential / 6 Year Light Commercial	Unilin
4V Painted Bevel	Embossed-In-Register (EIR)	9"x60"	Lifetime Residential / 10 Year Light Commercial	Unilin



Our level of care and expertise separates us from everyone else. The members of our sales team go above and beyond to give our customers the best possible experience!

We're right here in Ohio, ready to help you.



800-520-0961

# PUT YOUR TRUST IN BESTLAMINATE®

---

Bestlaminat® is a family owned and operated company that puts integrity, passion, innovation and energy into everything we do. Our reputation and product quality matters to us.

We are BBB A+ Rated and each of our collections has been trademarked with the United States Patent and Trademark Office to ensure authenticity and avoid the potential of copies.



BBB A+ Rated Since 2005



4.8 Stars on Google Reviews

## REAL CUSTOMER REVIEWS:

*"Great customer service! They went above and beyond what I would have expected from our experience with flooring companies! Great quality product and highly recommended company with great service!" - Kayla P.*

*"My experience with this company was excellent from the time I ordered to when my order was delivered. Everything was perfect, the boxes arrived on time and with no damage. I love the floors, and this company worked with me on the pricing to get within my budget. I would definitely recommend using them and I would use them again in the future. Thank you for all you did for me." - Sharon T.*

*"Another fantastic experience. Great pricing, excellent service, fast delivery, perfect product. Thanks!" - Keith O.*



Reg. No. 4,950,819

May 3, 2016

The United States of America



Certificate of Registration  
Principal Register

**BEST  
LAMINATE**

for

Retail and wholesale store services and distributorship services featuring flooring products in International Class 035.

**Bestlaminat, Inc.**  
Registrant

The mark shown in this certificate has been registered in the United States Patent and Trademark Office to the named registrant.

The records of the United States Patent and Trademark Office show that an application for registration of the Mark shown in this Certificate was filed in the Office; that the application was examined and determined to be in compliance with the requirements of the law and with the regulations prescribed by the Director of the United States Patent and Trademark Office; and that the Applicant is entitled to registration of the Mark under the Trademark Act of 1946, as Amended.

This registration shall remain in force for TEN (10) years, unless terminated earlier as provided by law, and subject to compliance with the provisions of Section 8 of the Trademark Act of 1946, as Amended.

*Michelle K. Lee*  
Director of the United States Patent and Trademark Office

Reg. No. 6,188,655

November 3, 2020

The United States of America



Certificate of Registration  
Principal Register

**BESTLAMINATE VINDURI**

for

Flooring accessories, namely, floor coatings, floor topcoats, wood floor finishes in International Class 002; Flooring, namely, hardwood flooring, vinyl flooring, parquet flooring, engineered hardwood flooring, floor tiles, not of metal, floor panels, not of metal, veneer wood, not of metal in International Class 019.

**Bestlaminat, Inc.**  
Registrant

The mark shown in this certificate has been registered in the United States Patent and Trademark Office to the named registrant.

The records of the United States Patent and Trademark Office show that an application for registration of the Mark shown in this Certificate was filed in the Office; that the application was examined and determined to be in compliance with the requirements of the law and with the regulations prescribed by the Director of the United States Patent and Trademark Office; and that the Applicant is entitled to registration of the Mark under the Trademark Act of 1946, as Amended.

This registration shall remain in force for TEN (10) years, unless terminated earlier as provided by law, and subject to compliance with the provisions of Section 8 of the Trademark Act of 1946, as Amended.

*Andrei Iancu*  
Director of the United States Patent and Trademark Office

Reg. No. 6,188,656

November 3, 2020

The United States of America



Certificate of Registration  
Principal Register

**BESTLAMINATE LIVANTI**

for

Flooring accessories, namely, floor coatings, floor topcoats, wood floor finishes in International Class 002; Flooring, namely, hardwood flooring, vinyl flooring, parquet flooring, engineered hardwood flooring, floor tiles, not of metal, floor panels, not of metal, veneer wood, not of metal in International Class 019.

**Bestlaminat, Inc.**  
Registrant

The mark shown in this certificate has been registered in the United States Patent and Trademark Office to the named registrant.

The records of the United States Patent and Trademark Office show that an application for registration of the Mark shown in this Certificate was filed in the Office; that the application was examined and determined to be in compliance with the requirements of the law and with the regulations prescribed by the Director of the United States Patent and Trademark Office; and that the Applicant is entitled to registration of the Mark under the Trademark Act of 1946, as Amended.

This registration shall remain in force for TEN (10) years, unless terminated earlier as provided by law, and subject to compliance with the provisions of Section 8 of the Trademark Act of 1946, as Amended.

*Andrei Iancu*  
Director of the United States Patent and Trademark Office

Reg. No. 6,188,657

November 3, 2020

The United States of America



Certificate of Registration  
Principal Register

**BESTLAMINATE ADDURI**

for

Flooring accessories, namely, floor coatings, floor topcoats, wood floor finishes in International Class 002; Flooring, namely, hardwood flooring, vinyl flooring, parquet flooring, engineered hardwood flooring, floor tiles, not of metal, floor panels, not of metal, veneer wood, not of metal in International Class 019.

**Bestlaminat, Inc.**  
Registrant

The mark shown in this certificate has been registered in the United States Patent and Trademark Office to the named registrant.

The records of the United States Patent and Trademark Office show that an application for registration of the Mark shown in this Certificate was filed in the Office; that the application was examined and determined to be in compliance with the requirements of the law and with the regulations prescribed by the Director of the United States Patent and Trademark Office; and that the Applicant is entitled to registration of the Mark under the Trademark Act of 1946, as Amended.

This registration shall remain in force for TEN (10) years, unless terminated earlier as provided by law, and subject to compliance with the provisions of Section 8 of the Trademark Act of 1946, as Amended.

*Andrei Iancu*  
Director of the United States Patent and Trademark Office

# BEST LAMINATE



[www.bestlaminates.com](http://www.bestlaminates.com) | 1-800-520-0961 | [support@bestlaminates.com](mailto:support@bestlaminates.com)

3900 Ben Hur Ave. Willoughby, OH 44094

