

TROAX



STORAGE DESIGN LIMITED

COMMERCIAL PARTITIONING

INDUSTRIAL AND
INTERIOR APPLICATIONS

PROTECTING PEOPLE, PROPERTY, AND PROCESSES.

STORAGE DESIGN LIMITED

Primrose Hill

Cowbridge

South Wales

CF71 7DU

Tel: 01446 772614

email: info@storage-design.ltd.uk

web: www.storage-design.ltd.uk

CONTENTS

| | |
|----|---------------------------------|
| 03 | COMMERCIAL PARTITIONING |
| 04 | OUR SERVICES |
| 06 | ENHANCE YOUR WORKSPACE |
| 08 | TITAN - DOUBLE SKIN STEEL |
| 10 | ELAN - DOUBLE SKIN STEEL |
| 12 | SIGMA - SINGLE SKIN STEEL |
| 14 | BASTION - SINGLE SKIN STEEL |
| 16 | DEMOUNTABILITY, MULTI-TIERING |
| 18 | HINGED DOORS |
| 19 | SLIDING DOORS |
| 20 | ROLLER SHUTTERS |
| 21 | CEILINGS |
| 22 | ACCESSORIES |
| 24 | STANDARD AND OTHER MESH OPTIONS |
| 26 | FIRE RATING & ACOUSTICS |
| 27 | VETRO - FULLY GLAZED |
| 28 | POWDER COATING - COLOURS |
| 30 | NBS NATIONAL BIM LIBRARY |
| 31 | TROAX WORLDWIDE |

Troax are global developers and manufacturers of steel mesh panels for Machine Guarding, Warehouse Partitioning, Property Protection and Commercial Partitioning. This brochure presents our solutions for the market segment of Commercial Partitioning. Our business concept is to develop innovative steel partitioning and mesh panel solutions to protect people, property and processes, as well as to ensure a secure and fully utilised working environment. Read more about our systems at www.troax.com/gb

COMMERCIAL PARTITIONING

03

COMMERCIAL PARTITIONING TROAX

For 65 years, we have been developing innovative commercial partitioning solutions for industrial, interior and office applications. Today we are found all over the world – protecting people, property and processes.

TROAX IS IN THE BUSINESS OF SAFETY AND SECURITY. OUR PANEL SYSTEMS OFFER THE SAFEST AND MOST FLEXIBLE SOLUTIONS ON THE MARKET.



ISO 9001 Quality Management System



ISO 14001 Environmental Management System



Royal Institute of British Architects



National Building Specification, Building Information Modelling



Storage Equipment Manufacturers Association



RIBA - Product Selector



Finishes and Interiors Sector



National Building Specification Plus

Whatever your needs may be, we will create a bespoke solution. Our ranges are marketed in four segments: Commercial Partitioning, Machine Guarding, Warehouse Partitioning and Property Protection.

ROOM FOR NEW IDEAS

Within the segment of Commercial Partitioning we offer five systems: Titan, Elan, Sigma, Bastion, and Vetro, along with a variety of ceilings and accessories. These products can be combined in several ways. Together, we can create a solution to suit your needs.

SURVEYS ON SITE

One of our technical salesmen will personally manage your enquiry and – if needed – carry out a detailed site survey on location. Our technical sales team are passionate at creating your perfect workspace solution. Our skilled assembly team can take care of the installation of your system while your contact at Troax will follow up on your project.

PLANNING AND DESIGN

Our systems are adapted and designed to suit your specific needs, with everything intricately planned down to the smallest detail. With several security levels and a variety of different locks, door designs and glazing options, our ranges can be built to suit all kinds of applications.

INSTALL IS PART OF OUR OFFER

Troax offer help with assembly and installation on all our systems. Should you choose to install the products yourself, each Troax delivery includes clear user instructions and assembly guidelines, which make it easy to assemble our system on site.

ENHANCE YOUR WORKSPACE.

06

COMMERCIAL PARTITIONING TROAX

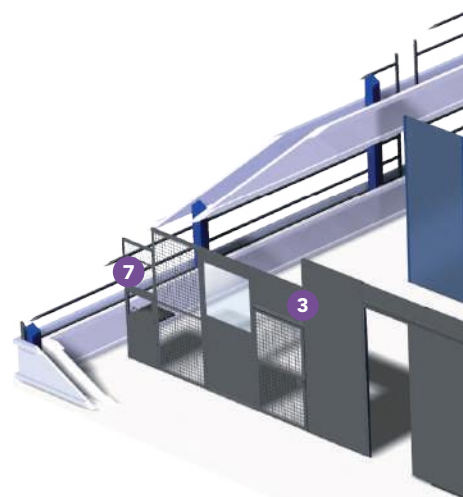
Troax offer complete solutions to protect your personnel and production process. Our Commercial Partitioning products will maximize your workspace potential.

Troax partitioning ranges enable you to quickly and efficiently divide large-scale spaces, segregate secure storage areas, and create both industrial and well-designed offices, cleanrooms, and work areas. With a broad selection of door and ceiling options to accompany our partitioning ranges, we offer a real "one stop" solution for all your partitioning needs.



1 TITAN

Titan is a high-quality double skin steel partitioning system ideal for cleanroom and commercial applications.



5 VETRO

Vetro is a fully glazed partitioning system for open and aesthetically pleasing workspaces.



6 ROLLER SHUTTERS

Our roller shutter doors offer a secure and efficient means of entry and exit.



7 STANDARD DOORS

Our developed and tested door ranges offer safe and reliable access points.



2 ELAN

Elan is a high-quality double skin steel partitioning system for office, warehouse and factory applications.



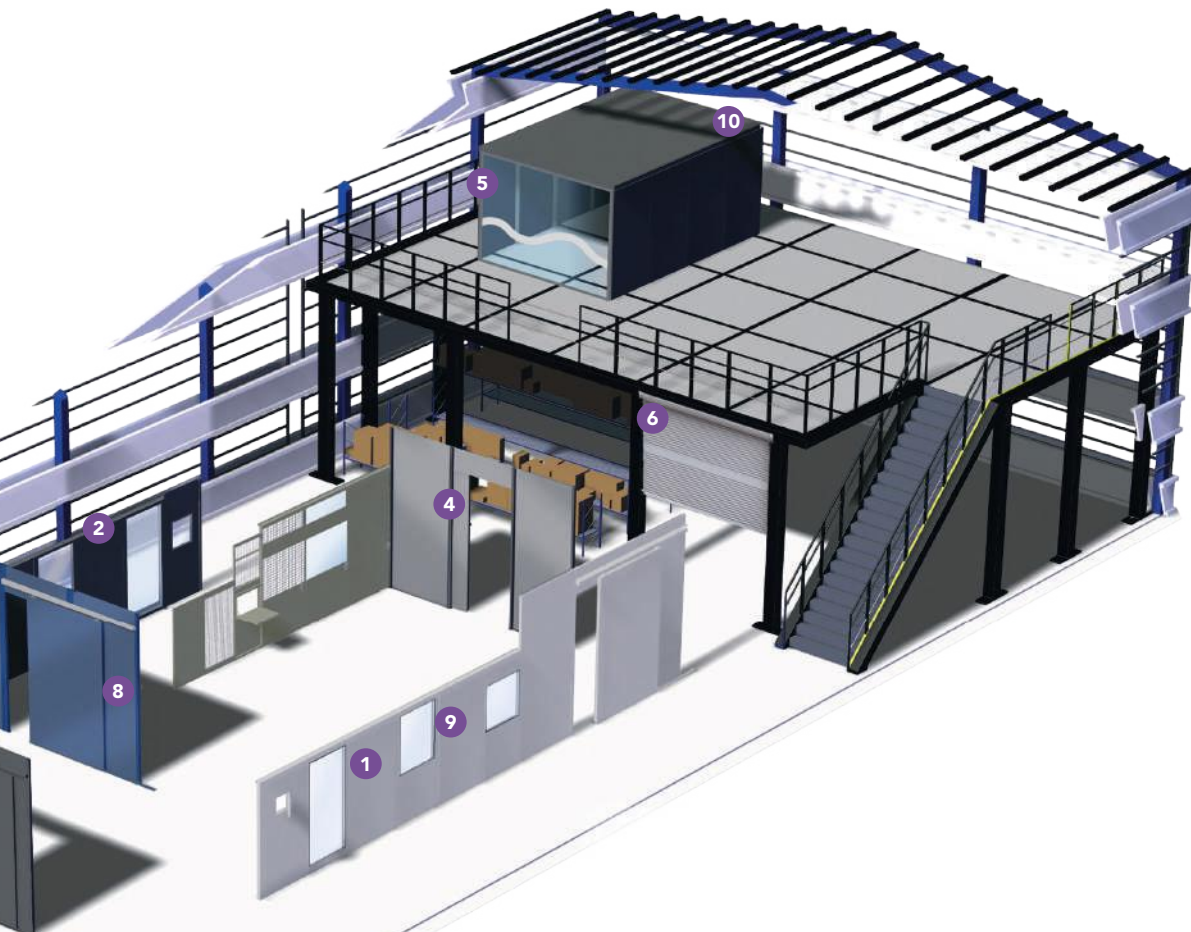
3 SIGMA

Sigma is a single skin partitioning system ideal for factory and warehouse environments. Wide range of mesh sizes available.



4 BASTION

Bastion is a single skin partitioning system ideal for cost effective enclosures of superior strength and stability. Wide range of mesh sizes available.



8 SLIDING DOORS

Where space is at a premium our sliding doors offer a truly elegant solution.



9 TITAN AND ELAN DOORS

The refined Titan and Elan doors offered by Troax are renowned for durability and good design.



10 CEILINGS

Ceiling and roof options to perfectly accompany our partitioning ranges.

TITAN

DOUBLE SKIN STEEL.

HIGH QUALITY AND HYGIENIC

Titan has been designed specifically for use in cleanroom environments, where clean processes are undertaken. Its two-line junction keeps dust and particle leakage to a minimum, and its powder coated finish is an ideal surface for clean environments where a degree of cleanliness is required.

Through smart engineering and careful manufacturing, using the correct air handling and HEPA filters makes the Titan panel system a popular solution for mid-range cleanrooms. (ISO 14644-1 class 5,6,7 & 8).

08

COMMERCIAL PARTITIONING TROAX

- » Joints can be silicone sealed to stop air flow and further reduce particle leakage.
- » Completely demountable, enabling one panel to be removed without having to dismantle the whole enclosure.
- » Flush glazing eliminates ledges and improves aesthetics.
- » Toughened glass with polished edges lay perfectly flush with the steel panels and doors, allowing for a modern look.
- » Integrated blinds are available, which are controlled with a portable dial - keeping the panel face free from unnecessary clutter.

AG

SGS

TITAN PANELS

AS (all steel) and SGS (steel-glass-steel) panels all come in the standard sizes below.

3000 mm
2695 mm
2390 mm



300 mm
500 mm
600 mm
900 mm
1000 mm

AS

AG (all glass) panels come in a standard glass size of 500 mm x 1600 mm, and a steel frame of the desired height and width.

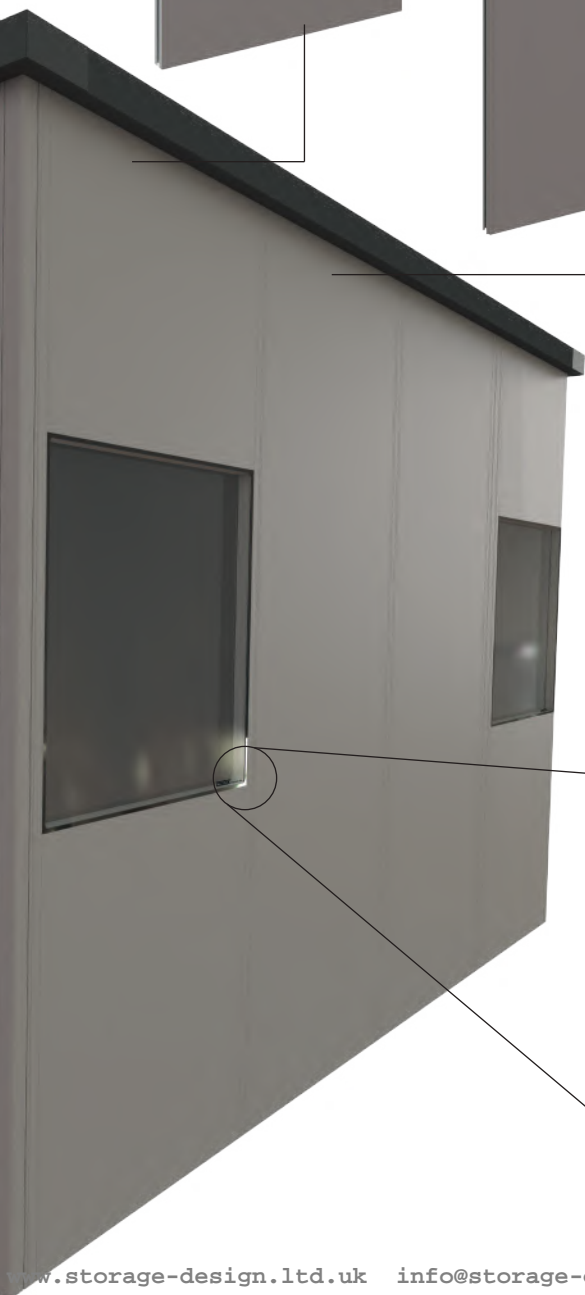
1600 mm



500 mm

09

COMMERCIAL PARTITIONING TROAX



ELAN

DOUBLE SKIN STEEL.

APPEARANCE AND SAFETY

Elan is a high-quality double skin steel partitioning system which can be used in a wide range of applications where appearance, aesthetics and safety are important. Elan's aesthetic and physical properties make it very appealing for a multitude of working environments, such as factory partitioning, museum display areas, and laboratory offices. Elan is a cost-effective answer to all your space management problems.

This system is available in both non-fire and fire rated versions. Please contact us to discuss your requirements.

10

COMMERCIAL PARTITIONING TROAX

- » Integrated blinds are available, which are controlled with a portable dial - keeping the panel face free from unnecessary clutter.
- » Noise reduction capabilities can also be offered with potential noise reduction of 28 dB - 32 dB.
- » Completely demountable, enabling one panel to be removed without having to dismantle the whole enclosure.
- » Panels can be supplied in a fire-rated version to BS476: Part 22:1987.
- » **See page 22 for fire rating and acoustic enhancement capabilities.**



ELAN PANELS

AS (all steel), SG (steel glass), GSG (glass-steel-glass) and SGS (steel-glass-steel) panels all come in the standard sizes below. A width of 1000 mm is available if the height is below 2438 mm.

AG (all glass) panels have less height options, however have the same width availability.

3657 mm
3048 mm
2743 mm
2438 mm



300 mm
400 mm
500 mm
600 mm
700 mm
800 mm
900 mm
1000 mm

2743 mm
2438 mm



300 mm
400 mm
500 mm
600 mm
700 mm
800 mm
900 mm
1000 mm

11

COMMERCIAL PARTITIONING TROAX



SIGMA

SINGLE SKIN STEEL.

MODULAR AND FLEXIBLE

The Sigma system is ideal for factory or warehouse environments. It is perfect for enclosing working areas where appearance is important, but a double skin system is not necessary, making our Sigma range a very popular economic solution.

It offers a lightweight yet durable solution for your workplace. Applications include perimeter guarding for heavy-duty machinery, robots, conveyors, and other automated processes.

SIGMA PANELS

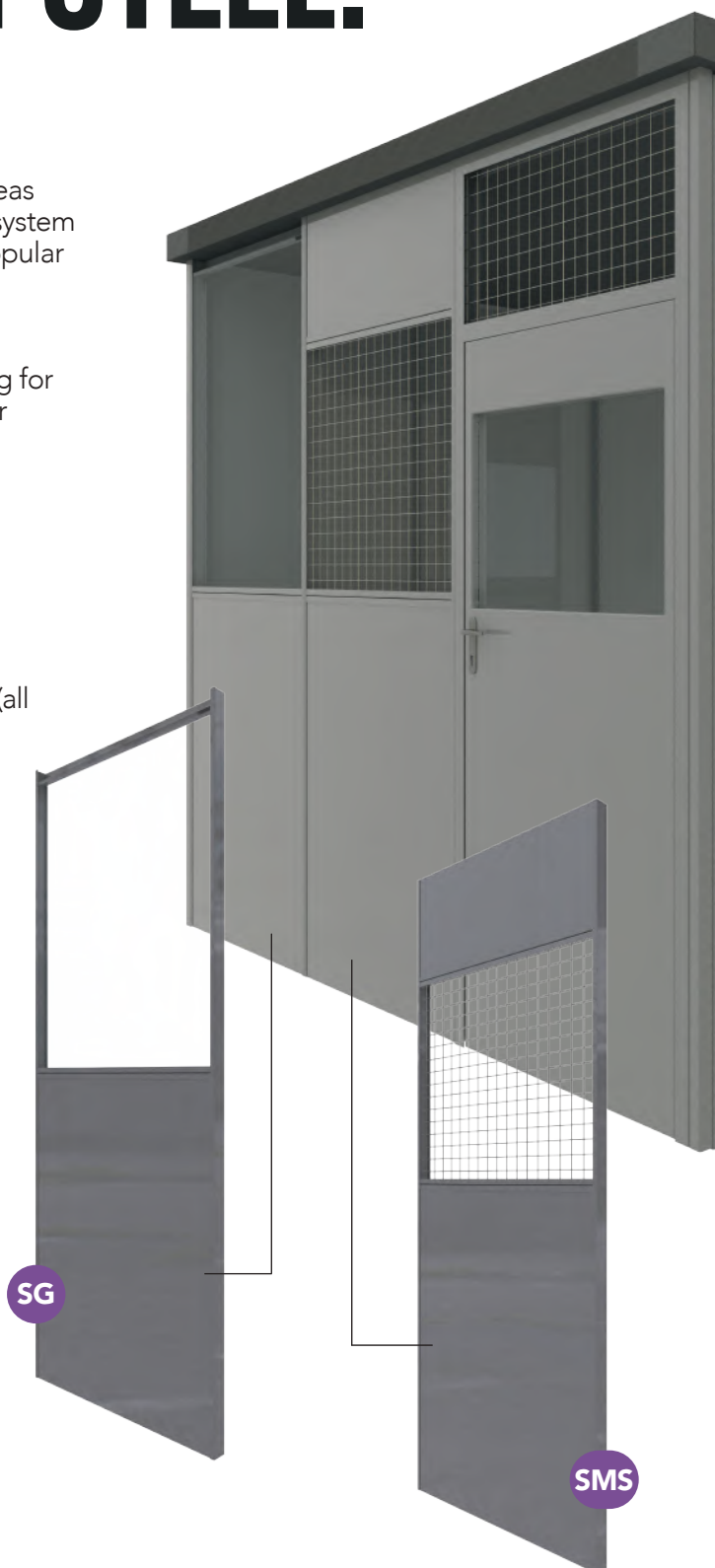
Sigma is available in six different configurations: AS (all steel), FM (full mesh), SG (steel glass), SMS (steel-mesh-steel), SGS (steel-glass-steel) and SM (steel mesh).

All Sigma panels come in the standard sizes below.

3657 mm
3048 mm
2743 mm
2438 mm



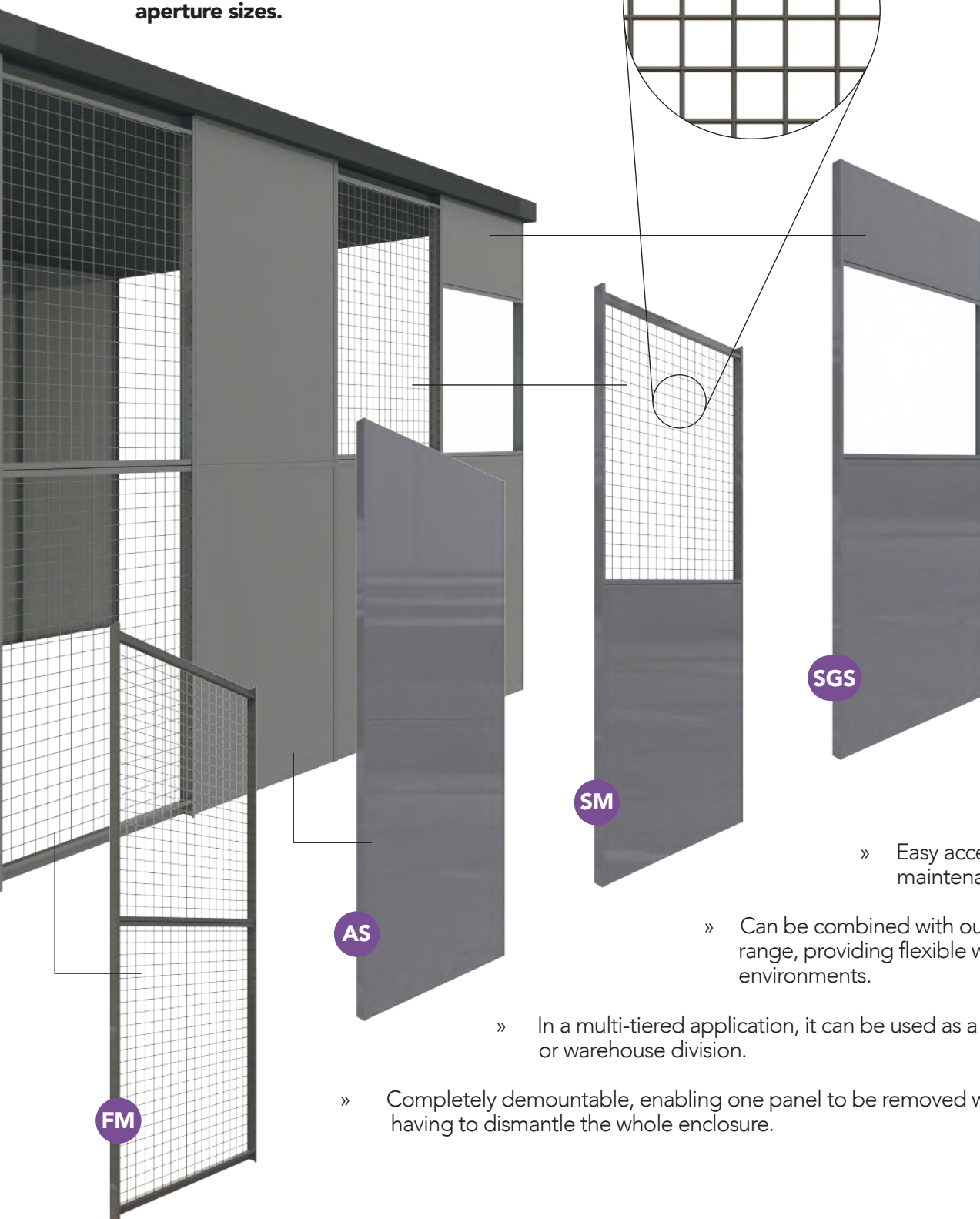
300 mm
400 mm
500 mm
600 mm
700 mm
800 mm
900 mm
1000 mm



SIGMA MESH OPTIONS

Our standard mesh is 50.8 mm (2 inch), however other mesh options such as 25.4 mm (1 inch) and 12.7 mm (1/2 inch) are also available upon request.

See Page 26 for all mesh configurations and aperture sizes.



13

COMMERCIAL PARTITIONING TROAX

» Easy access for maintenance.

» Can be combined with our Elan range, providing flexible working environments.

» In a multi-tiered application, it can be used as a factory or warehouse division.

» Completely demountable, enabling one panel to be removed without having to dismantle the whole enclosure.

BASTION SINGLE SKIN STEEL.

DURABLE AND HEAVY-DUTY

Bastion is an economic heavy-duty angle-framed single skin partitioning system with superb strength and adaptability. Its robust angle frame makes it an ideal choice for creating a highly secure perimeter. Bastion is the answer when it comes to creating a secure environment.

The welded combination of our steel and mesh sheets make it very resistant to attack. Bastion is one of our most popular ranges, providing cost-effective security.

BASTION PANELS

Bastion is available in six different configurations: AS (all steel), FM (full mesh), SG (steel glass), SMS (steel-mesh- steel), SGS (steel-glass-steel) and SM (steel mesh).

Where the panel is required with mesh, various mesh options are available.

All Bastion panels come in the standard sizes below.

3000 mm
2743 mm
2440 mm

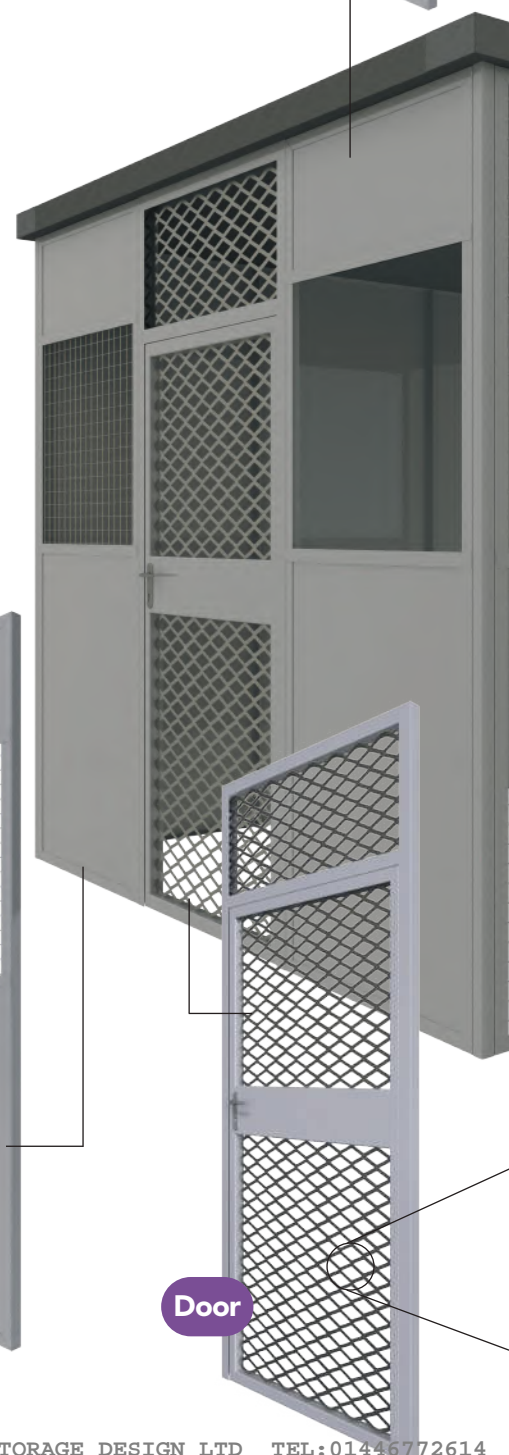


300 mm
400 mm
500 mm
600 mm
700 mm
800 mm
900 mm
1000 mm
1200 mm

SMS

Door

SGS

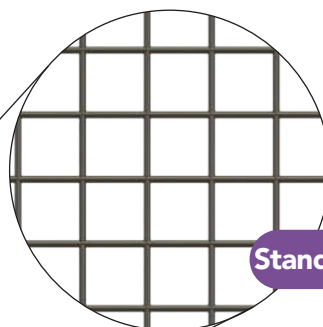


FM

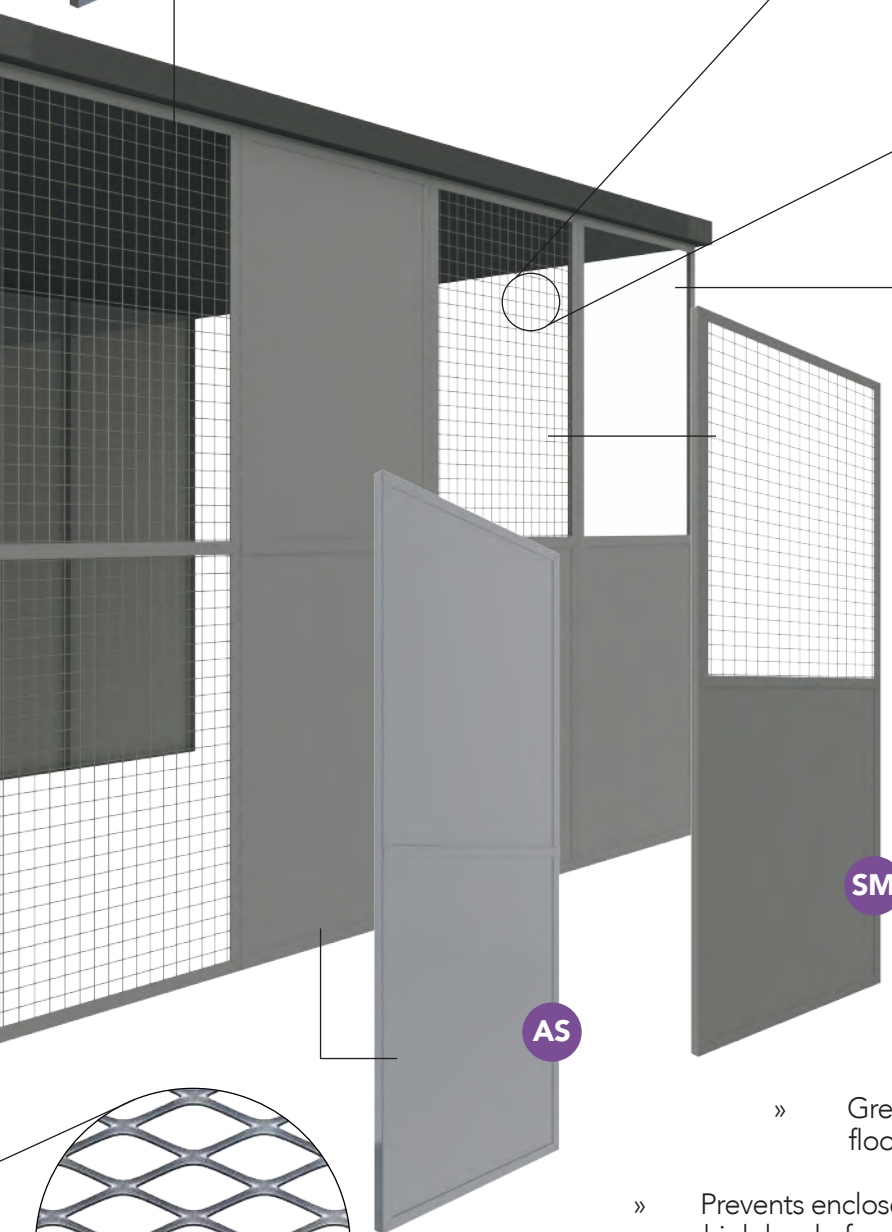
BASTION MESH OPTIONS

Our standard mesh is 50.8 mm (2 inch), however other mesh options such as 25.4 mm (1 inch), 12.7 mm (1/2 inch), expanded metal and woven mesh are also available upon request.

See Page 26 for all mesh configurations and aperture sizes.



Standard Mesh



SM

AS

SG

» Rapid installation/ adaptability and relocation.

» Can be tailored to fit into existing building layouts, blending in seamlessly with the working environment.

» Great structural strength, bolted straight into the floor.

» Prevents enclosed areas from intrusion, thus providing a high level of security.

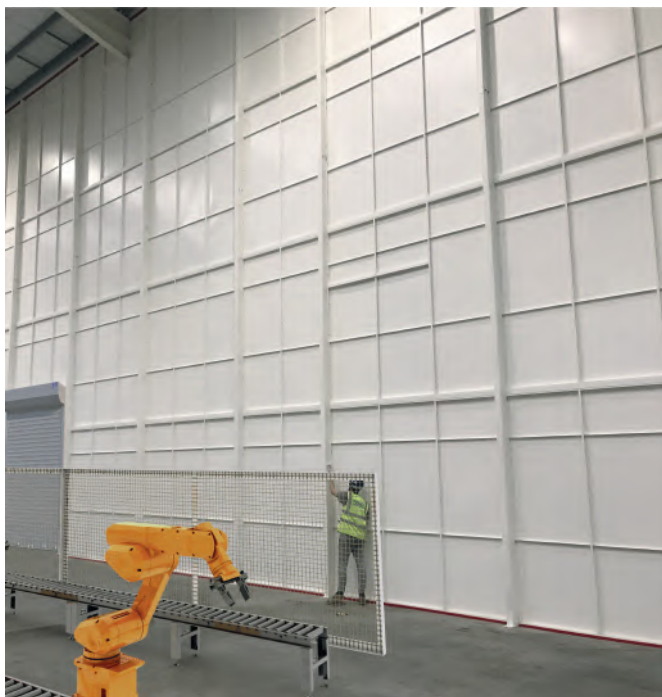
» Can be multi-tiered to create a truly demountable system that is ideal for any dynamic workspace.

Expanded Metal

DEMOUNTABILITY, MULTI-TIERING.

Our partitioning ranges are uniquely designed with aesthetics, security, function and adaptability as our main focus. All of our partition ranges have the ability to be completely demountable, enabling one or more panels to be removed and/or replaced without having to dismantle the whole enclosure.

Multi-tiering can also be achieved as our partitioning systems are modular, meaning they have joining functions on all 4 edges of the panels, as well as 3 way and 4 way splitting systems, allowing you to create any enclosure you require.



INSTALL IS PART OF OUR OFFER

Troax offer help with assembly and installation on all our systems. Should you choose to install the products yourself, each Troax delivery includes clear user instructions and assembly guidelines, which make it easy to assemble our system on site. Our smart modular designs arrive pre-finished, which enables a fast, clean install and is easily demountable for relocation if required.

DURABLE AND VERSATILE

Every installation is unique and created to meet your specific demands. Our systems are extremely durable and can withstand the most demanding applications. They are versatile and can easily be combined with each other. Troax are committed to being as environmentally friendly as possible in all parts of production. Our panel systems are also 100% recyclable.



HINGED DOORS.

THROUGH YEARS OF EXPERIENCE, TROAX DOORS HAVE BEEN DESIGNED AND DEVELOPED TO ACHIEVE A SECURE AND DURABLE DOOR SUITABLE FOR ANY WORK ENVIRONMENT. EACH RANGE HAS THEIR OWN VARIETY OF DOORS WHICH INTEGRATE WITH THEIR RESPECTIVE SYSTEM TO CREATE AN AESTHETIC, SAFE AND RELIABLE ACCESS POINT.

TITAN DOOR

To match the cleanroom function of the Titan system, the Titan Door is enhanced to suit this feature. The door is completely flush minimizing any dust traps and comes with a door closer and a kickplate as standard features, offering further protection in daily use. A two-tone option is available whereby the door is a different colour on either side.



BASTION DOOR

The Bastion system has its own range of doors to match the enclosure. Fully equipped with high quality door handles and/or locks and a door closer, it provides a safe and durable point of entry or exit. Door and vision panel options include standard mesh, expanded metal, perforated sheets, woven mesh or glass.



ELAN DOOR

The Elan Door compliments the Elan system perfectly, offering the same high quality and safety standard expected from Troax products. Various shapes and sizes of vision panel or none are available. A two-tone option is also available whereby the door is a different colour on either side.



SIGMA DOOR

The Sigma door comes fully equipped with high quality door handles and/or locks and a door closer. Door and vision panel options include standard mesh, perforated sheets or glass.



SLIDING DOORS.

TROAX OFFER HIGH PERFORMANCE AND SMART ACCESS POINTS IN THE FORM OF SLIDING DOORS. SLIDING DOORS PROVIDE AN AESTHETIC SOLUTION FOR AREAS WHERE SPACE IS AT A PREMIUM.

- » Single or bi-parting sliding doors.
- » Available in Bastion, Sigma and Elan.
- » Made to accommodate most door sizes.
- » Unobstructed door openings.
- » Large door options suitable for forklifts.
- » Full steel, mesh or glazed.
- » Integrated and smart locks.



ROLLER SHUTTERS.

TROAX PROVIDE ROLLER SHUTTERS AS ALTERNATIVE ACCESS POINTS. WE CAN HELP YOU SELECT THE CORRECT TYPE OF PRODUCT TO SUIT YOUR REQUIREMENTS. OUR ROLLER SHUTTERS ARE MADE TO SUIT YOUR OPENING SIZES, APPLICATION, SECURITY RISK, FIRE RISK AND BUDGET.

We offer roller shutters for a wide range of applications such as warehouse, industrial, commercial, factory, retail and security. We can also provide fire rated roller shutters.

Manufactured from galvanised steel or extruded aluminium, all our roller shutters are tested and certified to British and European safety standards and are CE marked.

We have a wide range of roller shutters, from high speed roller shutters and transparent, perforated or solid roller shutters to manual garage roller shutters, available and designed to fit both your needs and your budget. Please contact us about your roller shutter requirements.



CEILINGS.

**FIND THE PERFECT WAY TO
ENCLOSE YOUR PARTITIONING.
TROAX OFFER A VARIETY OF
CEILINGS TO SUIT ALL
APPLICATIONS.**

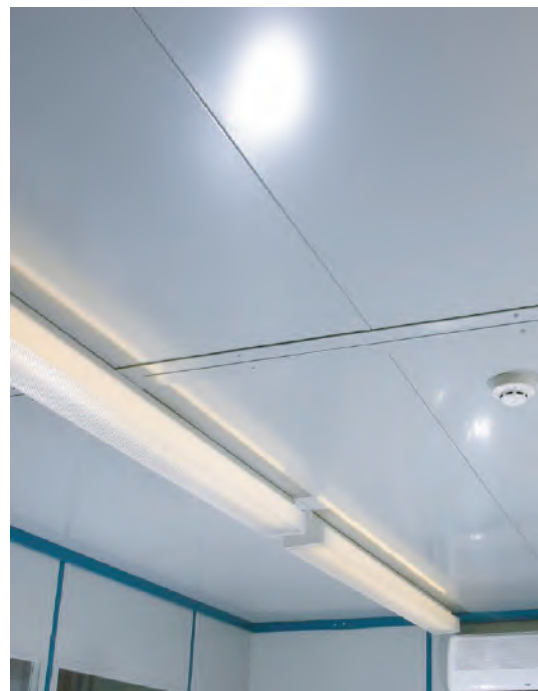
TRO-GRID (SUSPENDED CEILING)

- » Popular in warehouses and factories.
- » Compatible with all our ranges.
- » Variety of ceiling panels and styles available.
- » Spans up to 7000 mm wide.
- » Other spans available upon request.
- » Standard sizes of tiles are 600 x 600 mm and 1200 x 600 mm.
- » One-hour fire rating available upon request.



TRO-SPAN (DOUBLE SKIN STEEL CEILING)

- » Spans up to 7000 mm.
- » Other spans available upon request.
- » Modular design for quick install.
- » Compatible with all our ranges.
- » One-line junction system.
- » Different panel styles available such as perforated steel for enhanced acoustic capabilities.
- » Merge seamlessly with Elan and Titan partitioning.
- » Lights can be implemented to match the ceiling style.
- » Multiple thickness available: 100 mm, 150 mm and 200 mm.
- » Variety of fillings available: Mineral Wall, PIR (polyisocyanurate) and PP (Polystyrene).



ACCESSORIES COMPLETE THE PICTURE.

22

COMMERCIAL PARTITIONING TROAX



RECESSED SOCKETS

Our recessed sockets provide a sleek finish to your partitioning electrical and data needs, having an almost flush surface allows for an aesthetic yet functional appearance.



HATCHES

Hatches offer access points which can be integrated into the partitioning seamlessly, giving it a sleek and professional look. They are manufactured to the same standard as their respective partitioning system.



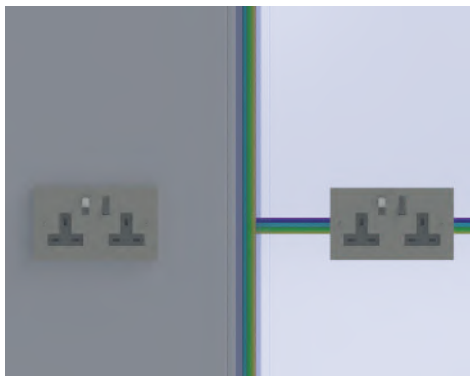
GLAZING

Our Titan glazed panels consist of flush glazed toughened glass with polished edges, allowing for a modern look. We provide double and single glazing with 6.4 laminated glass for all our other ranges.



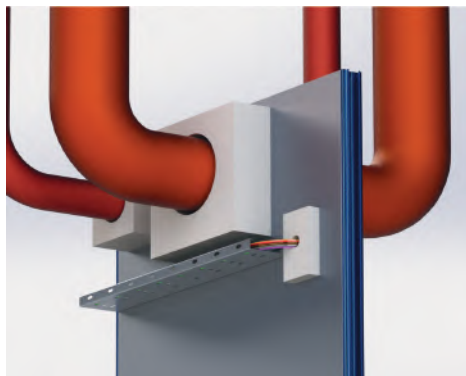
VARIOUS LOCK OPTIONS

Our doors are designed to fit a wide variety of different locks and handles, ranging from 3 lever deadlocks, bathroom locks and sash locks. Contact us for any of your door lock requirements.



INTEGRAL WIREWAYS

The design of our partitioning systems allows for wireways in between panels. This allows for a sleek and mess free solution for your wiring needs.



PENETRATIONS

If there is pipework throughout your partitioning, we can accommodate for any shape and size of penetration. We also provide fire stopping should the project be fire rated.

TROAX OFFER A MULTITUDE OF HIGH-QUALITY ACCESSORIES TO FULLY FINISH AND COMPLIMENT YOUR INSTALLATION. WE ARE COMMITTED TO MAKING THE PERFECT SOLUTIONS FOR YOUR WORKSPACES. TO FACILITATE THIS, BESPOKE ACCESSORIES ARE AVAILABLE UPON REQUEST.



STANDARD AND OTHER MESH OPTIONS.

WE OFFER PERFORATED SHEETS,
WOVEN MESH AND EXPANDED
METAL IN PLACE OF STANDARD
MESH, FULFILLING ALL YOUR
MESH NEEDS.

Our single skin systems Sigma and Bastion are available in mesh panel configurations. Our standard mesh is a 50.8 mm (2 inch) aperture mesh panel welded to the frame. Another popular mesh size is 25.4 mm (1 inch). 12.7 mm (1/2 inch) mesh is also very popular.

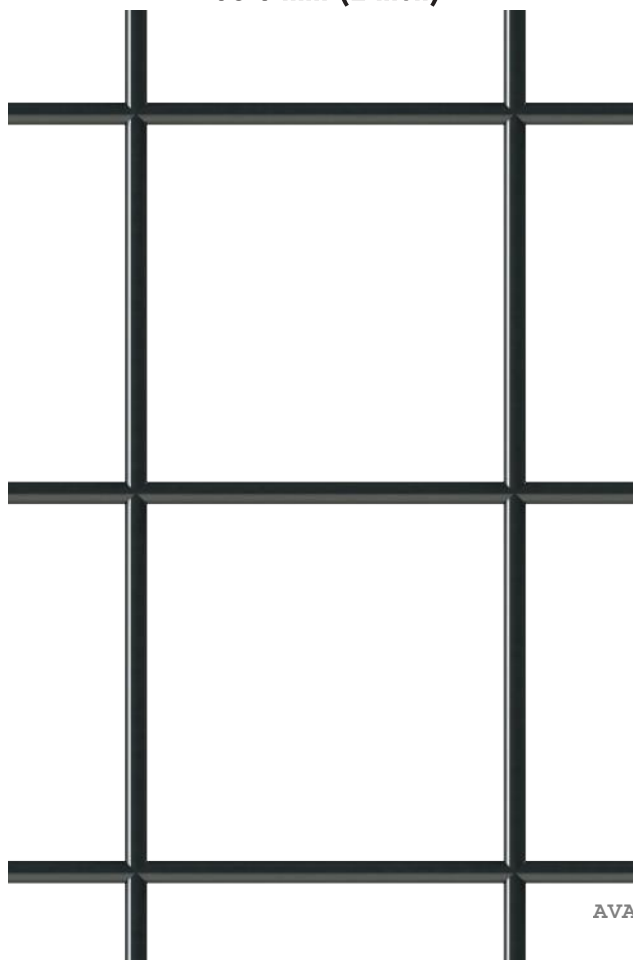
24

Other mesh sizes are available upon request. Please contact us for further details.

Our welded wire mesh is a 3 mm thick metal wire screen that is made from various alloys including steel, stainless steel, brass and copper. Grids of parallel longitudinal wires are welded to cross transverse wires at the required spacing, using electric fusion. The machines that are used to produce the mesh have precise dimensional control.

Have a look at our popular mesh sizes below, all to scale.

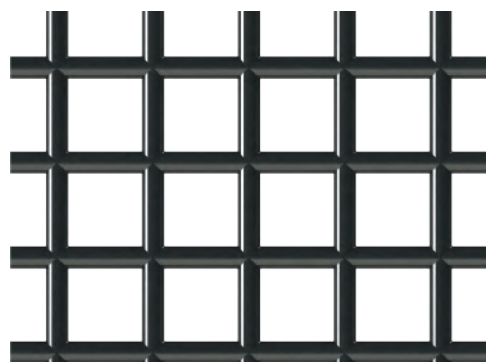
50.8 mm (2 inch)



25.4 mm (1 inch)



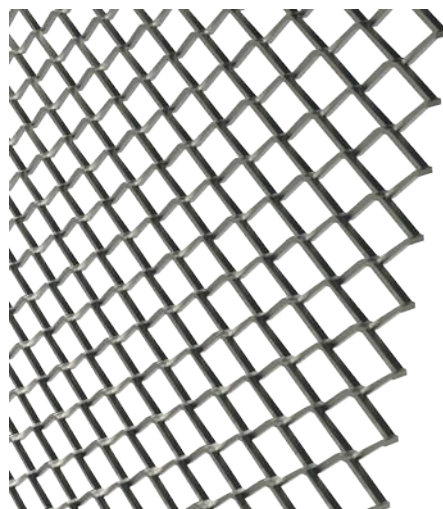
12.7 mm (1/2 inch)



EXPANDED METAL

An expanded metal sheet is made by first creating multiple slits in the sheet, and then stretching the sheet. The stretching creates a unique diamond pattern opening with one of the strands protruding at a slight angle. The process produces an extremely strong and efficient mesh panel.

A large range of expanded mesh types are available. They are available to fit any size panel you require and will provide an aesthetically pleasing, secure and safe mesh panel.

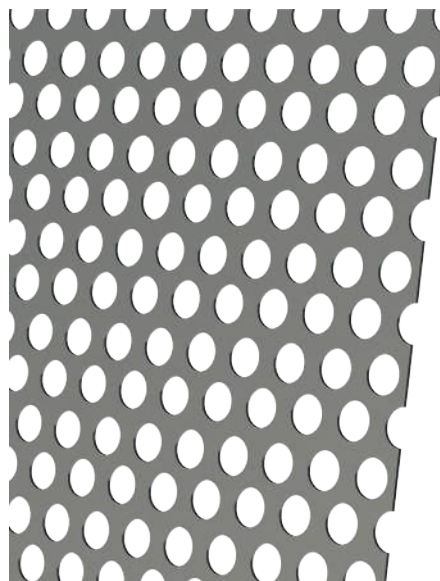


PERFORATED SHEETS

Perforated sheets are made from sheet steel that has holes (or other designs) punched out of it. These holes can be straight rows or staggered to increase the amount of the openings, depending on your aesthetic requirements.

They are available to fit any size panel you require and will provide an aesthetically pleasing, secure and safe mesh panel.

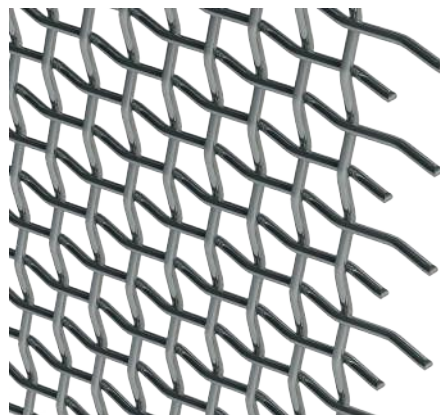
From lightweight decorative elements to load-bearing structural components, perforated metal offers unique opportunities to combine strength, functionality and beauty.



WOVEN MESH

Woven wire mesh is made by weaving longitudinal and transverse wires together. The interwoven structure produces a sturdy and stable fence application.

They are available to fit any size panel you require and will provide an aesthetically pleasing, secure and safe mesh panel.



FIRE RATING & ACOUSTICS.

26

COMMERCIAL PARTITIONING TROAX



IF FIRE SAFETY AND SOUND PROOFING ARE REQUIRED, OUR MARKET LEADING ELAN DOUBLE SKIN PARTITIONING SYSTEM IS AVAILABLE BOTH FIRE-RATED AND ACOUSTICALLY ENHANCED.

Our fire rated panels are infilled with mineral wool and tested to BS 476: Part 22:1987 and have fire ratings of up to 1 hour, depending on panel configuration.

We have also achieved a Class O specification and have been tested for flammability to BS 476: Parts 6 & 7.

Please contact us about your fire rating/ acoustic partitioning requirements.

The mineral wool also provides noise reduction capabilities of up to 32dB (tested to BS 5821:Part 1:1984).

Sound Rating

The testing was completed at AIRO (Acoustical Investigation and Research Organisation Ltd). The tests used rockwool 60kg/m³ and involved the panels listed below being fixed.

Sound Reduction of a Solid Partition

| Frequency (Hz) | Sound Reduction Index (dB) | Frequency (Hz) | Sound Reduction Index (dB) |
|----------------|----------------------------|----------------|----------------------------|
| 125 | 4.4 | 630 | 27.5 |
| 160 | 6.4 | 800 | 29.7 |
| 200 | 10.1 | 1000 | 41.8 |
| 250 | 18.1 | 1250 | 44.2 |
| 315 | 22.8 | 1600 | 44.6 |
| 400 | 25.0 | 2000 | 44.6 |
| 500 | 26.0 | 2500 | 45.1 |
| 630 | 26.5 | 3150 | 45.1 |

The weighted sound reduction index $R_w = 24$ dB (BS 5821:Part 1:1984)

Sound Reduction of a Double Glazed Partition

| Frequency (Hz) | Sound Reduction Index (dB) | Frequency (Hz) | Sound Reduction Index (dB) |
|----------------|----------------------------|----------------|----------------------------|
| 125 | 11.2 | 630 | 38.3 |
| 160 | 12.1 | 800 | 40.6 |
| 200 | 15.7 | 1000 | 42.1 |
| 250 | 25.4 | 1250 | 44.5 |
| 315 | 25.0 | 1600 | 44.5 |
| 400 | 28.5 | 2000 | 44.1 |
| 500 | 30.0 | 2500 | 44.9 |
| 630 | 30.0 | 3150 | 43.6 |

The weighted sound reduction index $R_w = 30$ dB (BS 5821:Part 1:1984)
Average sound reduction index (100 to 3150Hz) = 33.4 dB

Sound Reduction of a Single Glazed Partition

| Frequency (Hz) | Sound Reduction Index (dB) | Frequency (Hz) | Sound Reduction Index (dB) |
|----------------|----------------------------|----------------|----------------------------|
| 125 | 11.1 | 630 | 30.0 |
| 160 | 14.0 | 800 | 37.1 |
| 200 | 20.1 | 1000 | 38.4 |
| 250 | 25.0 | 1250 | 39.4 |
| 315 | 25.0 | 1600 | 35.2 |
| 400 | 28.2 | 2000 | 33.5 |
| 500 | 30.0 | 2500 | 33.0 |
| 630 | 33.4 | 3150 | 25.7 |

The weighted sound reduction index $R_w = 38$ dB (BS 5821:Part 1:1984)

All the panels tested in accordance with BS 2750:Part 3:1980 and BS 5821:Part 1:1984

Fire Rating

For information - details on the fire rating capabilities which are not in our literature

All panels/doors infilled with mineral wool, glazing needs to be wired or alternative fire rated type.

All tests performed in accordance with or tested to **BS 476: Part 22:1987.**

Our powder coating has achieved a Class O classification and has been tested for flammability to and complies with **BS 476: Parts 6 & 7.**

The table below shows values in minutes pertaining to integrity.

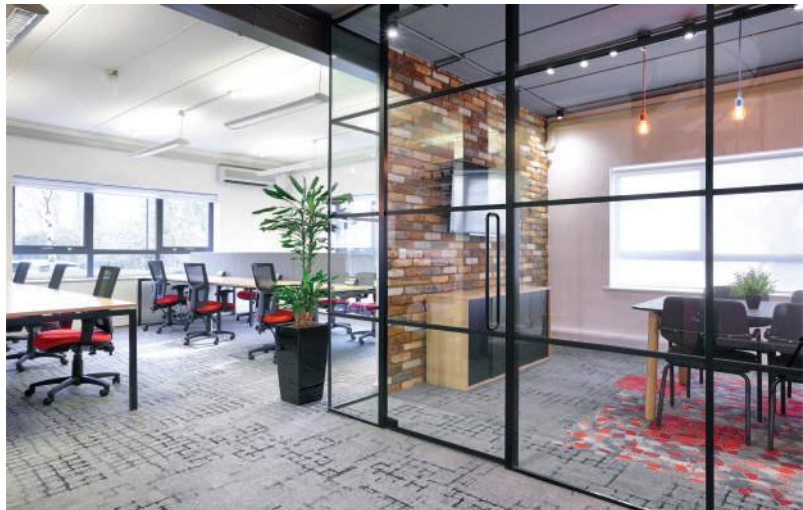
| Product | Fire Rating |
|---|-------------|
| Steel / Glass / Steel Panel (single glazed) | 30 minutes |
| Steel / Glass / Steel Panel (double glazed) | 60 minutes |
| All Steel Panel (solid) | 60 minutes |
| Single Door (solid or glazed) | 60 minutes |
| Double Door (solid or glazed) | 60 minutes |
| Tro-Span Ceiling | 60 minutes |

VETRO FULLY GLAZED.

ELEGANT AND OPEN

Vetro is a range of fully glazed partitioning products for open and aesthetically pleasing workspaces.

Available in either single or double-glazed panels and doors, both with and without customization, Vetro provides an ideal solution for modern office interiors.



The aesthetic properties of Vetro make work environments feel stylish and fluid. It offers attractive physical properties such as an acoustic rating and clear aesthetic views. It provides offices the privacy they require.

Single glazed panels have an acoustic rating of 39 dB whilst double glazed panels are 47 dB.

Specialist artwork and logos can be printed onto the glass for your branding requirements.

SHOW YOUR TRUE COLOURS.

COLOUR AND FINISH YOUR
PRODUCTS TO SUIT YOUR
WORKSPACES.

28

COMMERCIAL PARTITIONING TROAX



RAL 9006 *



BS.08.B.17



BS.00.A.05



RAL 5010

STANDARD COLOURS

RAL 9010



RAL 7037



RAL 9016

We always prepare our products to the highest of quality. All panels are supplied with a TGIC and lead-free powder coat to an average thickness of 70 microns.

Non-standard and corporate colours are also available upon request, as are anti-static/electro dissipative and antimicrobial powder coatings.

The Bastion system can also be offered in a Hot-Dipped Galvanised finish.

Panels are prepared and powder coated in our UK based factory.

* Available at extra cost.



NBS NATIONAL BIM LIBRARY.

**THE FASTEST GROWING
LIBRARY OF DIGITAL
PRODUCT INFORMATION.**

This award-winning library is quickly becoming the future of the construction industry. Troax are proud members of the NBS National BIM library, and our 3D products can be downloaded with all their relating specifications for anyone to see.



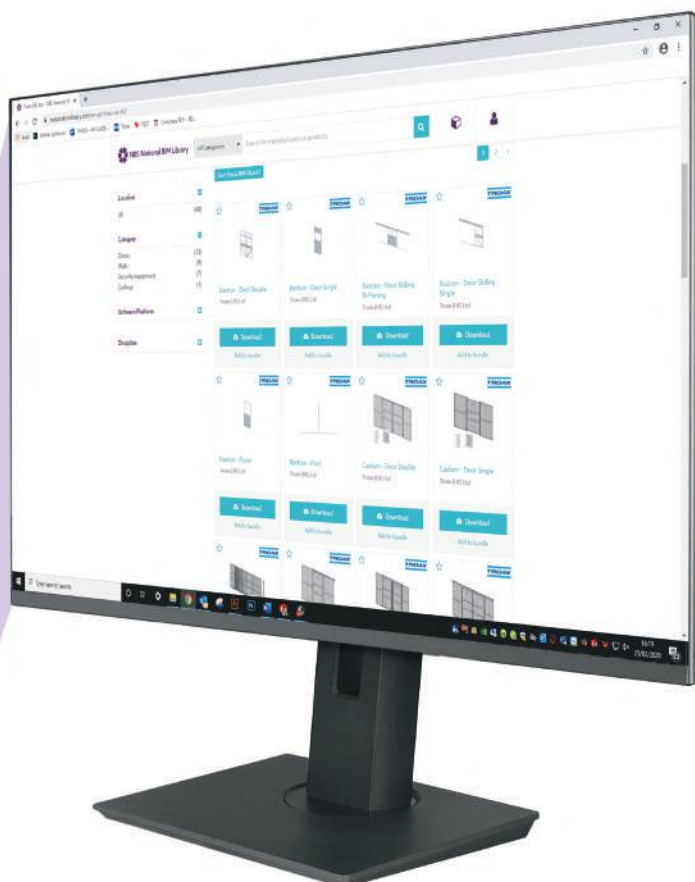
The RIBA CPC Providers Network is vital in today's industry for creating the all-important relationship between manufacturers and architects.



NBS Plus is a library of manufacturers' technical product information. This information is stored in a standard format and can be found in the relevant clauses within the NBS Specification software. They can be added to any specification at the click of a button.



The RIBA Product Selector offers customers access to product catalogues, technical documents, design files, case studies and company contact details.



LOCAL & GLOBAL PRESENCE.

TROAX ARE REPRESENTED IN MORE THAN 40 COUNTRIES AND HAVE 24 SALES COMPANIES OF OUR OWN. WE AIM TO STRENGTHEN OUR POSITION WORLDWIDE AND EXPAND OUR BUSINESS IN EACH CONTINENT.



At Troax, we meet your needs through local sales offices, backed up by daily deliveries from the world's largest warehouse for mesh panels, Troax Hillerstorp, Sweden.

STRONG MARKET SEGMENTS

Our systems are marketed in four segments: Commercial Partitioning, Machine Guarding, Warehouse Partitioning and Property Protection.

1. COMMERCIAL PARTITIONING

We are continuously testing and improving our ranges of commercial partitioning with the aim that every work environment should be as enhanced and as safe as possible.

Through years of experience and intelligent engineering, this goal is becoming more possible than ever.

2. MACHINE GUARDING

Today's modern industry - with its advanced processes - places significant demands on safety. In particular, there is a great need for controlled access for authorised personnel. Our mesh panels are based on a carefully developed modular system that also includes special adaptations.

3. WAREHOUSE PARTITIONING

Troax can meet all requirements for storage and security. We are suppliers to all types of industry –

from traditional manufacturers that require large-scale flows and volumes throughout their factories, to facilities with high-bay storage and retail storage. We can meet all your requirements and we offer complete solutions.

4. PROPERTY PROTECTION

Whether it is a new development or the renovation of an existing installation, we are convinced that you will find our products easy to work with. Your unique needs and our creativity have contributed to our constant product development, giving rise to our motto: "Secure storage must be simple".

COMMERCIAL PARTITIONING

INDUSTRIAL AND INTERIOR APPLICATIONS



STORAGE DESIGN LIMITED

STORAGE DESIGN LIMITED

Primrose Hill

Cowbridge

South Wales

CF71 7DU

Tel: 01446 772614

email: info@storage-design.ltd.uk

web: www.storage-design.ltd.uk