



Killearn. **Courier**

ISSUE 25

SPRING 2013

£1



Local Art Sale

Local amateur artists attending Art4YouScotland classes at the Ballochruin Farm studio (known locally as the alpaca farm) exhibited their work in aid of Crossroads West Stirlingshire on the first Friday and Saturday of February. This was the first time most of the artists had exhibited their work in public, let alone sold any. More than 200 people visited the studio, and over £3,000 was raised. Ewen and Claudia Duncan of Art4You put a lot of effort into organising the exhibition and they, the artists and Crossroads were rewarded by the success of this inaugural event.

Caption Competition



Many thanks to all our readers who sent in entries.

The winner is Charlie Brown, who receives a £10 book voucher for his entry: 'This obsession with Snoopy is going too far'.

When starting each papercut project I do need to undertake thorough research for each village. Be it anecdotal tales, Google maps or, in this case, a local magazine. I have to say the *Killearn Courier* proved my best research vehicle. I could confirm local businesses through adverts, and find out about all the different clubs and associations through other interesting articles. You made my task easier, really enjoyable and interesting. Brilliant – from one delighted and happy artist!

If any of your readers wish to find out more, I am always delighted to meet interested people and to show sample artwork and costings.

Kind regards,

Christine J. Thomson, DA
Wester Culbowie,
Buchlyvie FK8 3NY

Editor's note:
Christine's advert is on page 17.

If you are interested in advertising in our next edition, we will be pleased to help you. Contact details are given below.



Needleworx is a local business offering a bespoke curtain & cushion making service.

We also embroider logos for schools, clubs and businesses.

Needleworx



Call Gwenda on 07876 028764 or email needleworx4u@yahoo.co.uk
Visit www.needleworx4u.co.uk or www.facebook.com/needleworx.co.uk

We support Killearn Country Market

Supplier of Killearn School Uniforms

LETTERS TO THE EDITOR

We welcome your letters and emails. Please include your full address (not necessarily for publication). We reserve the right to edit letters.

Dear Sir

I have lived in Killearn for many years and in that time have always enjoyed walking round the village, my passage unimpeded by any obstacles in my way. Nowadays however, it's a different story.

Depending on the day of the week, one can find oneself negotiating round wheelie bins, blue boxes, food bins and cardboard containers. All bad enough, but far worse are the number of cars parked all over the place, particularly on pavements.

I can't remember this sort of thing being much of a problem years ago, but now there seems to be an awful lot of cars in the village. Indeed, some of our streets are reduced to one way traffic because of the narrowness of the road and parked cars. I think part of the problem is just that – many more cars – but I also think that if drivers were to use their driveways more, consider other road users, and take their rubbish containers back in as soon as they can, then perhaps traffic, both pedestrian and vehicular, would flow a bit easier.

A. Walker
Beech Drive

Dear Sir



I took this photo of my friend admiring the view from Lochranza Castle. On looking at the photograph there was a mysterious figure close by my friend, who appears to be a knight in armour. She assures me that she was alone, and has no explanation for it. A trick of the light or a ghostly presence, you decide.

Barbara Roberts
Killearn

Editor's note: We have magnified part of the original photo to show the figure.

All past editions of the *Courier* are available to view or download on the KCFC website: www.kcfc.co.uk and click the *Courier* tab

Cover Picture
Finnich Glen by Andy Summers

Killearn Courier published by:



Anyone wishing to contribute to the Summer edition is reminded that it will be distributed on 17 August 2013.

Advertisements and artwork should be handed to one of our Advertising Executives by Friday, 5 July 2013. Contact Gwen Stewart on 550856 or Sara Hudson on 550806.

Contributions and letters to the editor should be in the hands of the editorial team by Friday, 5 July 2013. Send them to:

36 New Endrick Road, G63 9QT or email to: courier@kcfc.co.uk

Please support our advertisers who make the Courier possible.

The Courier is not responsible for the content of advertisements.

Editorial

Well, here we are with the first issue of 2013, and the start of our ninth year of publication.

I hope this year will be a lot dryer than last year; the odd week or two of brilliant sunshine wouldn't go amiss either.

There's been a lot going on in the Parish of late. The houses in the Turnip Field are progressing nicely and the new look for the Village Hall is certainly taking shape. The report of the KCC (*page 8*) mentions all sorts of things, in particular the large numbers of concerned residents who turned out to attend the various meetings where the Local Development Plan was on the agenda.

Clearly, there are a lot of residents who have involved themselves in this situation and quite rightly. They are, collectively, taking every step available to them to express their opinions, in the hope that any proposed changes to Killearn are for the better, not the worse. It is to be hoped that a solution is reached which satisfies everyone, and thus gives all those taking action in this matter a sense of satisfaction and of achieving something worthwhile; a most commendable involvement. However, wouldn't it be nice if, when this item has been dealt with, that the people so active in it raise their horizons and become similarly involved in ALL situations which affect Killearn?

A good starting point would be to stand for election to the Community Council in October when several of the current members will retire.

Unfortunately the village has lost a number of 'weel kent' residents over the winter and we pass on our condolences to the families and relatives.

We've got yet another stunning front page giving a view that few of us have seen, even though it is right on our doorstep.

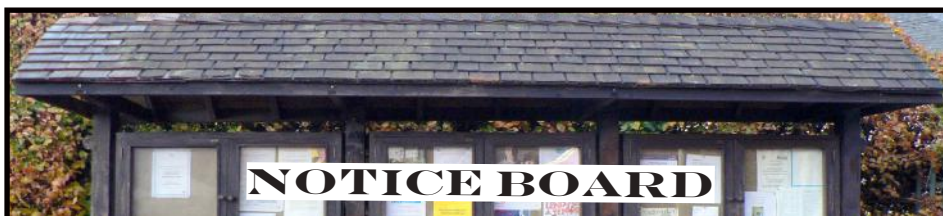
Our usual contributors have their articles in place and we have some other items as well.

Fortunately, our advertisers continue to support us and we should do the same by supporting them; after all, we don't want any closures here!

Enjoy this issue and 2013.

Ian

Ian Dickie, Editor



18 Mar	Strathendrick Rotary Club meeting. Black Bull Hotel, 6.30 for 7pm, thereafter every Monday except bank holidays and the fifth Monday of a five Monday month. Contact Steve Holden (550764).
20 Mar	Killearn Community Council meeting. Killearn Primary School, 8pm.
21 Mar	Thursday Club meets in the Kirk Hall, 2pm – 4pm and thereafter every Thursday. For all pensioners over 60. Contact Peggy Gardner (550558).
24 Mar	Strathendrick Singers. Spring Concert featuring works by Bach, Vaughan Williams and Howard Goodall. Killearn Kirk, 7pm. Tickets at door or from choir members. Contact Pat (550074). www.strathendricksingers.org.uk .
28 Mar	Drymen & District Local History Society. Talk by Dr Bill Inglis, 'Dunblane in the First World War, 1914–19'. Drymen Village Hall, 7.45pm. www.drymen-history.org.uk .
29 Mar	Killearn Health Centre closed. Online prescription ordering service available throughout holidays at www.killearnhealthcentre.com .
31 Mar	Killearn Kirk. Easter Sunday Service, 10.30am.
1 Apr	Killearn Health Centre closed.
5 Apr	Strathendrick Film Society showing Ring of Bright Water. Balfron Campus, 7.30pm.
6 Apr	Killearn Country Market. Kirk Hall, 10am–1pm. Contact Daye Tucker (551060).
17 Apr	Killearn Community Council meeting. Killearn Primary School, 8pm.
19 Apr	Strathendrick Inner Wheel Fashion Show. Balfron High School, 6.30pm. Contact Betty Meikle (550579), Ann O'Neill (550605), Rita Harris (550045).
21 Apr	Strathendrick Classic and Sports Car Club. <i>Drive it Day</i> – Rotary Club of Strathendrick Classic Tour.
22 Apr	Monday Music. Summer term starts. Kirk Hall. Contact Clare Cushing (550166).
24 Apr	Strathendrick Classic and Sports Car Club. Afternoon Run followed by meal and AGM at Buchanan Castle Golf Club.
25 Apr	Drymen & District Local History Society Members' Night and AGM. Short talks by members of the society, preceded by cheese and wine from 7.15pm–7.45pm, Drymen Village Hall.
26–27 Apr	Fintry Amateur Dramatic Society. Two one-act plays: <i>By the Half</i> and a youth play, <i>An Outline of History</i> . Menzies Hall, Fintry, 7.30pm. Contact Liz Brown (860078) for tickets.
4 May	Killearn Country Market. Kirk Hall, 10am–1pm.
6 May	Killearn Health Centre closed.
10 May	W. Stirlingshire Friends of Strathcarron Hospice Ladies' Dinner, The Winnock, Drymen. 7 for 7.30pm.
15 May	Killearn Community Council meeting. Killearn Primary School, 8pm.
18 May	Killearn Horticultural Society and Friends of Guiding. Gardeners' Market and Coffee Morning. Killearn Hall, 10am–12 noon.
25 May	Strathendrick Classic and Sports Car Club. Spring Run and overnight stay at Swinton in the Scottish Borders.
1 Jun	Killearn Country Market. Village Hall (<i>if open</i>), or Kirk Hall, 10am–1pm.
6 Jun	Guild. Stirling Presbytery Guild Rally. Killearn Kirk, 7.30pm.
19 Jun	Killearn Community Council meeting and AGM. Killearn Primary School, 8pm. In recess during July and August unless anything untoward occurs.
6 Jul	Killearn Country Market. Village Hall, 10am–1pm.
7 Jul	Strathendrick Classic and Sports Car Club. New style Club Championship Run and lunch.
3 Aug	Killearn Country Market. Village Hall, 10am–1pm.
31 Aug	Killearn Horticultural Society Annual Show. Village Hall, 2pm – 4.30pm. Teas from 2.45pm. Entries to be staged Friday, 7.30pm – 9pm or Saturday, 7.30am – 10am. For schedule contact Glenda Asquith (550142).

If you have any dates for the summer issue of the Diary (end of August until the end of November), please contact Heather McArthur (550137), heather.mcarthur@virgin.net

Killlearn Health Centre News

Forth Valley Family Support Service

We provide a free, confidential service and can see you at various locations throughout the Forth Valley including Falkirk, Stirling and Clackmannanshire.

If you are affected by a family member's alcohol or drug use we can offer you:

- Information, advice and support to you and others in your family.
- A better understanding of alcohol and drug problems.
- Ways to help you cope with what is happening with your family.
- Individual, peer and group support.
- Links to others who may be able to help you.



The family support service is a new service that offers group and one-to-one support across Forth Valley.

For more information please contact

Louise at 32 Vicar Street, Falkirk
tel: 01324 874969 m: 07920 576 380
or
Kelly at 65 King Street, Stirling
tel: 01786 450721 m: 07920 576 378

asc



ADDICTIONS SUPPORT & COUNSELLING
Working across Forth Valley



Dr Cumming

We are proud to announce that Dr Cumming has been nominated by his professional peers to become a Fellow of the Royal College of General Practitioners for his service to General Practice – congratulations to Dr Cumming.

We can also advise that he has been promoted from CHP Clinical Lead to Associate Medical Director in Primary Care for Forth Valley – again congratulations to Dr Cumming. Please note that while Dr Cumming will be working hard in his new role, he remains a partner here and will continue to work in the practice.

Pregnancy and Whooping Cough (Pertussis)

In an effort to protect newborn babies from getting whooping cough in the period before they are due vaccination, we are offering all those who are in week 28 or more of pregnancy a pertussis vaccination. Please contact reception.

On Line Prescription Ordering

Don't forget you can order your prescriptions 24/7 at:

www.killlearnhealthcentre.com.

Text Reminders

We offer a text service which, the day before your appointment, sends a reminder text to your mobile phone, a handy service in today's busy world. If we don't have it already, please provide us with your mobile phone number. You can contact us via

www.killlearnhealthcentre.com

or fill in a slip at reception.

Public Holidays

We will be closed on Good Friday, 29 March 2013 and Easter Monday, 1 April 2013 as well as the May Holiday, 6 May 2013.

If you need medical attention on any of these days please contact NHS 24 (0845 4242424). Please ensure you have ordered any repeat prescriptions for this period. Remember our website is open 365 days a year to take any prescription requests.

CAFE & DELI
doyles

Pizza Friday

CAFE & DELI
doyles

Our 10" pizzas are fresh made, thin base, crispy and above all very tasty. Chill out with a cold beer or a glass of wine !



Sit in or Take-Away

Every Friday from 4.30



Booking Advisable

Tele: 01360-449444

f : DoylesCafeBalfon

Menu: www.doylescafe.co.uk

Killearn Pharmacy Expansion

Killearn Pharmacy has expanded into the adjacent space within Lumsdaine Hall, formerly the old Church Hall. A suite of therapy rooms has been created to provide additional private and NHS therapies such as acupuncture, physiotherapy and therapeutic massage.

Local pharmacist Kenny More previously provided a therapy room within the existing shop premises, but felt this was not ideal, being too close to the pharmacy counter and having no waiting or toilet facilities. The opportunity to develop into the vacant space next door presented Kenny with the chance to create a slick modern suite of rooms with a comfortable waiting area and disabled toilets.

Jacqueline Morton continues holding her Foot Health Clinic in the therapy rooms, but with changed hours (see her advert below).

Other local therapist Rhona Campbell Smart offers therapeutic massage. Rhona is a clinical reflexologist and qualified clinical aromatherapist and can offer a range of holistic advice. She worked in Neal's Yard for ten years and provided massage treatments in various care homes and the Rosewood Centre for young adults with cerebral palsy. Rhona can be contacted at iblodge@yahoo.co.uk.

Speech and Language therapy is provided by Mrs Debbie More (www.forthvalleytalk.co.uk) who has twenty years' experience, the past fifteen as part of the speech and language team at Erskine Care, the charity for former servicemen and women. Debbie specialises in working with adults with acquired communication and swallowing disorders associated with strokes, dementia, brain injuries and Parkinsons.

Lorna Dougan is a fully qualified physiotherapist who is currently the lead learning disabilities physiotherapist for NHS Forth Valley and provides private care at Lumsdaine Hall. After thorough assessment, Lorna develops a physiotherapy management programme for the individual needs of her patients. She also offers acupuncture for pain relief. Visit her website:

www.lornadougantherapiesltd.com.

Kenny has provided a useful additional hub for health care in the local area which enables treatment to be received at a convenient time and location without having to travel to Glasgow or Edinburgh.



Firewood for Sale

Forthvale Contractors
Tel: 01877 387 202
Mobile: 07890 331 702
drew@forthvale.co.uk



Lumsdaine Halls

Therapy Rooms



Now Open

Currently offering Physiotherapy
Therapeutic Massage
Speech & Language Therapy
Acupuncture
Foot Health

Are you a practitioner looking for accommodation?
Sessions available - come and join us!

13 Balfron Road Killearn
01360 551783
www.facebook.com/lumsdainetherapy

Trossachs Gardening Services



Reliable

Advice, Maintenance, Grass Cutting, Painting Fences,
Planting, Huts, Hedge Trimming, Pruning, Weeding.

Contact: Trossachs Gardening Service

Tel: 01877-382141 Mob: 07546-066511



FOOT HEALTH CLINIC

JACQUELINE MORTON
FOOT HEALTH PRACTITIONER
MAFHP MCFHP

01360 550 374
07703 799 112

KILLEARN PHARMACY – TUESDAY, 9 am - 1 pm
OLD SURGERY, BUCHLYVIE – TUESDAY, 2 pm - 5 pm



Green Aspirations Scotland CIC is a new social enterprise based in woodland on Carbeth Home Farm, Drumtitan Road. We make use of our beautiful surroundings by providing workshops for schools, groups and the general public in green activities such as bushcraft, charcoal making, green woodworking, willow weaving and woodland management – this list is not exhaustive and we welcome suggestions!

You may have seen us at the Killearn Country Market selling our Scottish hand-made chopping boards, rustic planters and carved garden mushrooms. We are always thinking of new ideas for products so come along and see what we have made.

We can take our workshops to you, and our green woodworking pole lathe is fully mobile for events, so please get in touch if you would like more information. You can

have a look at our workshop programme on our website www.greenaspirationsscotland.co.uk.

Funding from the Community Woodland Association enabled us to run a one-day willow weaving – living structures workshop, pictured below. The thirteen attendees learned a new craft under the expert guidance of Joyce MacFarlane, at the same time as making improvements on our site. Green Aspirations provided the venue, campfire, tools, plenty of hot drinks and lunch cooked on the fire.

We look forward to having more workshops on site to share with people who live locally. We also welcome volunteers, so if you are interested in some regular outdoor exercise, please get in touch through the website or contact me, Louise McAllister, on 07540 246081. If the campfire is on, the kettle is on, so please pop in to explore our site.



Woodland Cemetery



The first stage of KCFC's Woodland Cemetery project is complete. The grass-topped drystone wall, built by the West of Scotland Dry Stone Walling Association, with its central standing stone, has provided a place to sit and remember those buried in its grounds.

The last task to be completed was the manufacture and installation of benches. As well as providing seating for visitors, they will allow memorial plaques to be placed within the beautiful drystone walls.

Daye Tucker of Carbeth Home Farm kindly donated green oak from a fallen tree on her estate that was over 200 years old. Three stunning benches have been constructed from a single log by Paul Cookson of Green Aspirations (*see article above*), with a fourth bench to follow. He milled the timber and made the benches to the group's specifications.

The seats were installed in February with the help of boys from Westmuir High School, Carntyne. The picture below shows Paul starting the ground preparation with the help of the boys. Some of the oak planks are lying to the right and a bench is being constructed on the left.



The final phase of the project will be the planting of wild flower plugs in areas of the ground not allocated to burials to beautify the grass area.

KCFC is indebted to the Paul Trust and Stirling Council's Community Pride Fund for grant aid, together with a number of generous donations from individuals. We also appreciate the time and skill of the stone wall volunteers.

Finally we must thank Pam Ayres for allowing us to use her poem on the standing stone.

PW

Spruce up for Spring

It's getting to that time of year, isn't it, when everything is looking a tad tired. There are always bits of the house that need something done to them, and the garden is straggled with last year's dead stalks and leaves and moss. We tend to leave things to the last minute in our house, and don't always see things that need to be done, but it's when other people notice that you realise you should maybe take action.

It was when our son came home for Christmas and said that in some ways the village looked a bit seedy, that I started looking around. It's amazing how much you don't see when you live here all the time. It takes an outsider, or someone who hasn't been here for a while, to see what has escaped your notice. Some things are obvious, of course, and have been for some time, like the state of the roads. In the main, they are spectacularly awful, and would disgrace a third-world country. We are not on our own, of course. Balforn is just as bad, and the main road through Blanefield should have a health warning on it. Unfortunately, there's not much we can do about it except complain to the council, and perhaps point out that some of the money spent on Stirling's pavements and unnecessary roundabouts might have been better deployed on the A81 and the A875, not to mention all the side roads. However, that said, there are some things we could do for ourselves to improve the look of the place.

The late Miss Shand, of Old Endrick Road, was a sterling character and very much a village woman. She would go out of a Monday morning, with a stout poly bag and heavy-duty rubber gloves, to pick up the rubbish dropped over the weekend in the swing park and the lane up to The Bull. She shouldn't have had to do it. Likewise all those who currently do the same job in areas like the multi-court. They shouldn't have to do it. How hard is it to put your trash in a bin? And in the unlikely event of there not being a bin to hand, why not take it home and put it in the bin there? It's not brain surgery, is it? My son did notice the litter, and thought it might be foxes. I was able to put him right there. That is not the kind of wild life we should be blaming.

Of course, there are bits of the village that always look cared for. Even when there are no flowers in the tubs, they always look promising. And places like the church gardens are kept smart and attractive even when nothing is growing. But then there are other questions. Why does the telephone box at Spar look so neglected? Even if it isn't used much, couldn't it look a bit brighter? And while we're in that area, hopefully the proprietors of Spar have



Happy spring cleaning.

Joyce Begg

it in mind this Spring to administer a lick of paint to their façade. That's the kind of thing that you don't notice till you stop and look. Lots of us can identify with that. Here's hoping that by the time you read this, it will all have been fixed.

In the meantime, there is no escaping the fact that our kitchen badly needs a coat of emulsion. It's not tired. It's exhausted.

Craig Tree Care Professional Tree Surgeons

full range of work with trees including:

- Pruning and reduction
- Tree removal and replacement
- Consultancy and advice
- Conservation and preservation

t: 01360 449 275
m: 07725 834 846



www.craigtreecare.co.uk

THE OLD MILL Bar & Restaurant

- Traditional scottish hospitality
- Fresh produce sourced locally
- Daily specials
- Beer garden & kids play area
- Chefs 2 course special menu available Mon - Fri 12-6



Proud to be your local

The Old Mill, 6 Balforn Road, Killlearn, G63 9NJ

Tel: 01360 550068

bookings@old-mill-killlearn.co.uk



Killlearn Community Council

News Update

Killlearn Community Council ended 2012 with a flurry of activity during the period following the publication in mid October of Stirling Council's Proposed Local Development Plan. This was outlined in the last issue of the *Courier* and, in brief, proposes, in addition to the six old peoples' bungalows, currently under construction on a part of the turnip field, an estate of fifty houses in a block on the north side of Station Road together with some vague references to possible future development on the Killlearn hospital site now termed Killlearn Hospital Rural Activity Area.

The proposed plan was on the KCC agenda at its monthly meetings in October, November and December and was the sole subject of a Special Meeting held on 1 November. KCC was delighted by the very high attendances, the meeting room at the school and, for the Special Meeting, the church, being filled to overflowing. It was our intention to let residents have their say – and you did, in good measure! You also responded in good measure by copying to KCC your opinions on the proposed plan which you sent to Stirling Council. Thanks to your energies and the force of your opinions, KCC drafted a response which we felt reflected the feelings of the community on Stirling Council's proposals. This was sent to Stirling on 1 January 2013 and can be read on the KCC website (www.killlearncc.org.uk).

The content is too long to reproduce here but, in brief, KCC asks Stirling Council to abandon the proposed development for fifty houses in Station Road; to undertake a detailed examination of the Hospital site with regards to its potential for housing along with other uses; to evaluate the potential for small-scale developments (up to ten houses) within or



Site of proposed 50-house development in Station Road

close to the village; to produce an amended plan which accords with the guidelines in the Local Development Plan and is more acceptable to residents. KCC recognises that Stirling Council has an obligation to meet housing targets set by the Scottish Government and offers its full cooperation and support to implement the proposals contained in our response. The Planners are currently analysing all the responses and will produce a report which will be presented to Stirling Council in May 2013. Any unresolved issues will be sent to the Scottish Government Directorate for Planning and Appeals, for consideration through an Examination process. We are now dependent on our elected councillors, all of whom support Killlearn's views, to ensure that our formal response is understood and carries weight with Stirling Council's Planning Department.



Killlearn Hospital site – overdue for development?

Other current issues remain much the same:

Dog fouling has been the subject of official complaints made to Stirling Council. In particular Allan Road and Graham Road have been named as roads where owners have offended by not 'picking up and binning'. Warning: Be prepared for official action by the dog warden! And please keep your dog under your supervision.

Parking is becoming pressurised, not only in Killlearn, but in all the local villages. Please ensure your parking does not inconvenience others by blocking their access or restricting their view of the road. This includes parking on the pedestrian pathway, which is an offence and which, because paths are not built to the specification of a road, damages it. It also puts pedestrians, including children, at risk if they are forced to step into the roadway.

Maintenance work, mainly below ground has been in evidence, particularly outside the Co-op. Thanks to Stirling Council for responding as soon as possible to our complaints. We hope we shall no longer have to leap across a stretch of water to get to the Co-op and the butcher.

A winter emergency has, thankfully, not materialised this year (at least at the time of writing) and we hope the worst of the wintry weather is in the past. All the same, we are grateful to those volunteers who offered to turn out and help if such an emergency should occur.

Trees and high hedges have had some professional attention. Thanks to the landowners who acted on the advice in the last issue of the *Courier*. Elsewhere there are still some lofty specimens which could benefit from a trim.

Succession strategy or who will follow us...?

KCC has just welcomed Gail Campbell to our number, and now can proudly end the final year of its term in office with a full complement of members plus two Youth members. In October the current Council will be disbanded, Stirling Council will organise elections for a new Council to serve for the next four years and will inaugurate a newly formed KCC in November 2013. Some of us will not stand for election again, so there will be places available for new blood! Many of you reading this will care about your community. Could you offer yourselves for election or help in any other way? Do give a thought to this possibility of offering your services to your community.

B.Pell



10 Years Young



When ten years ago, I received boxes of the Killearn Community Futures Action Plan, little did I imagine that it would lead to a charitable company that is overseeing a £1.4-million project. The Action Plan was the culmination of the work of a small dedicated group from the community who believed that instead of waiting for the local authority to do something, we should roll up our sleeves and do it ourselves. A few months later in July 2003, the company was registered and the following year attained charitable status and a website (www.kcfc.co.uk).

In its short life, the company has had an impact on the life and look of the community. The extension to the Village Hall is an obvious demonstration of our achievement. The Playpark, the seating area in the Woodland Cemetery and improvements to local paths are also significant additions to the infrastructure of Killearn.

Of equal importance is the active archives group, a group which Helen Loudon enthusiastically embraced and to which she contributed so much of her time and talents, which is taking on the task of recording the oral history of the village, collecting and preserving historic documents and giving us all a sense of place.

In addition, the company has become the vehicle for many other activities in the village: the annual firework display and bonfire, the Hoolie, Colourful Killearn and the Country Market. It also provides a way in which village clubs and societies can fulfil projects such as the football pavilion. And, of course, we mustn't forget the *Courier* which you are reading right now!

What can we achieve in the next 10 years? PW

INTERIOR DESIGN SALE

FABRIC WALLPAPER LAMPS
CHANDELIERS MIRRORS RUGS
FURNITURE & ACCESSORIES

A GREAT RANGE OF FABRIC REMNANTS
& LARGE PIECES IDEAL FOR CUSHION COVERS, BLINDS
AND COVERING CHAIRS.

WEEKENDS ONLY

12 - 4pm

AT

PANIK GALLERY
13 MAIN STREET
KILLEARN

Tel. 01360 550830 / 551166

WWW. BLANEVALLEY CONSTRUCTION .co.uk

Builders

General & New Build

Joiners

All levels of Projects

Electrical

Installations & Repairs

Roofing

Slate, Tile & Flat Roofs

Plumbing

Domestic and Heating

Maintainance

All Trades Repairs

ONE COMPANY ONE CONTACT ALL TRADES
73 Glasgow road Blanefield, 01360 770983

The Bakers&More

The Balfroon Bakery, Café & Takeaway

7.30am

5.30pm



Indulge yourself with a beautiful selection of rolls, breads, baguettes and croissants with our homemade savoury fillings. We also have an extensive takeaway menu with delicious hot and cold foods to go. For a little something to follow we have an array of some 50 different homemade cakes and scones



2009 BMW Z4

One of the newest cars in the Club – a 2009 BMW Z4 – is our featured modern sports car.

BMW (Bayerische Motoren Werke) is best known for sporting saloons and coupés, and it was not until the Z1 was unveiled at the 1987 Frankfurt Motor Show that BMW

resumed the manufacture of a proper two-seater sports car, the last one being the BMW 507 of the late '50s.

The Z stands for zukunft, 'future', giving an indication of the innovative designs which would follow. The Z1 was the first of the series. This was a groundbreaking sports car which had a monocoque shell clothed with a composite body incorporating drop doors which retracted vertically downwards into the bodywork. This model was produced from 1989 until 1991 in modest numbers, but it was expensive to produce and was replaced by the Z3 in 1996.

The Z3 was a very elegant design of conventional construction and sold well. The Z3 appeared in the James Bond film *Golden Eye*, which no doubt enhanced its appeal. The Z3 re-established BMW's credentials in the two-seater sports car market.

A limited production of an all-aluminium 4.9-litre Z8 model appeared in 1999 based on a concept car created as a modern interpretation of the '50s BMW 507. The naming of this model is slightly out of step with the badging of the rest of the Z range, but 'eight' refers to the V8 engine with which it was fitted. Only 5,703 of these cars were built, with the majority exported to the American market.

The first generation Z4 in 2002 had a much more muscular appearance than its predecessor. The cutting-edge shape was created by the American designer Chris Bangle, who had joined BMW as Head of Design in 1992. At this time BMW had pioneered a new method of using three-dimensional panel pressings allowing compound shapes to be formed. This enabled Bangle to develop much bolder and adventurous designs incorporating complex sweeps and curves in the bodywork which reflected light in such a way as to accentuate the lines of the car – a process known within BMW as 'flame surfacing'. Chris Bangle and his team also designed the Rolls Royce Phantom and the new Mini, both companies having been acquired by BMW in 1994.

The Z4 was followed in 2008 by the second generation Z4 which retained the general appearance of the previous model but with slightly more length and width. This gave more interior cabin space. The main specification change was the two-piece lightweight aluminium retractable hardtop which gave the driver the ability to change the car from an open-top roadster to a snug coupé at the touch of a button. The rear quarter light windows gave the interior a much airier feel with greatly improved all-round visibility.

The new model replaced both the fabric-top roadster



and the coupé with one new model. The Z4 is very versatile and boasts a very generous boot capacity. There is even an ingenious opening hatch between the boot and the cabin area to accommodate skis.

The Z4 retains the traditional layout of an engine longitudinally

mounted at the front driving the rear wheels which has been a mainstay of BMW design. The minimal overhangs front and rear, together with lightweight aluminium suspension components, give the car an ideal 50/50 weight distribution, resulting in sharp and responsive handling.

The model illustrated has a naturally aspirated 2497cc six-cylinder 24-valve in-line petrol engine (201 bhp) driving through a six-speed manual gearbox. Top speed is estimated at 151 mph with a 0–60 time of about 6.4 seconds. In spite of the Z4's sparkling performance it can still return a creditable 33 mpg helped by the optional cruise control. This example is finished in metallic black with a matching black leather interior.

There is no doubt that the Z4 is already a classic which will be very much in demand in years to come.



FRASER C. ROBB
engineering support for all industries

Fraser C. Robb is an Agricultural and General Engineer company based in Drymen, we have been established for over 35 years, and are a family business. We are constantly evolving to accommodate the needs of our customers and embrace new technology.

We sell and service all types of Agricultural and Horticultural Machinery (new and second hand), also Parts and Accessories. We are approved dealers for the brands below plus many more.

Visit our custom built showroom in Drymen, we offer our customers good service, superb prices and the best quality product to suit their needs.

sell » hire » service » repair

Stirling Road · Drymen · Glasgow · G63 0AA

01360 660 688
admin@frasercrobb.co.uk
www.frasercrobb.co.uk

We sell strimmers, hedgetrimmers, garden hand tools, pressure washers plus much much more!



Strathendrick Classic Car Club

The Club ended the year with several successful events. Unfortunately, our Club Championship in August was only attended by three cars, so a new format is to be tried out this year to encourage better attendance. The first change is to hold the meeting on a Sunday to allow those with activities on Saturdays to join in.

Our second visit to Mhor Fish in Callandar was well patronised, with about ten cars taking a circuitous route through Stirlingshire.

Two of our members organised a lunchtime tour to Brig O' Turk in October. The weather was good, and the time of day encouraged a dozen cars to turn out.

Our Winter schedule kicked off with a programme of films on historic motoring in Scotland. This was assembled and presented for the Club by the Scottish Screen Archive, now part of the National Library of Scotland, for a very reasonable fee. Such was the success of the meeting and the fact that the Archive have many more films in store, that the event may be repeated. Some members have film which the archive would be eager to collect to preserve.

Our annual Ladies Night with our Treasurer's Quiz was well attended, but will be the last by Jim Bisset, who is to retire as Quizmaster, a post which has involved considerable work in the preparation. Jim's efforts have been greatly appreciated by the members over many years.

The 2013 programme started with our Armchair Rally, and two further meetings will be held at Buchanan Castle Golf Club before our first road trip which for many will be the Strathendrick Rotary Club Classic Car tour on 21 April 2013.

We have a full programme for 2013, including our overnight tour to the Borders.

Several new members have joined us this past year and membership is now over forty. We look forward to welcoming more new friends this year as well as better motoring weather for 2013.

Douglas Arthur, Chairman

All Killearn Archive



Murray Cook demonstrating the cherub that could possibly have been on top of the Ladies Linn

AKA are at present working away at various projects.

We are considering what will be displayed in the new cabinets in the Village Hall and are in the process of setting up a web-browser based system for our existing documents and pictures. The latter will be available for visitors to the hall to look at on the in-house computers. We also hope to purchase certain records on CD such as births, deaths and marriages, which again would be available for browsing.

Some of our committee have arranged interviews both specifically in connection with the Killearn Hospital project and also for more general reminiscences with some of the older residents of the village.

We also would like to ascertain who holds records for various village organisations with a view to scanning items and discussing long-term storage.

It is hoped to hold an Open Day in the Village Hall once the refurbishment is complete.

Place of Killearn

There are on-going discussions concerning projects in the Glen, and a field walk has just taken place with Dougie Flynn, the Stirling Council Ranger, and Murray Cook, the Stirling Council Archaeologist.

Murray has also arranged a further dig on 10-11 May. This will take place in the Glen rather than on the site of the original house.

If you have any matters you wish to raise on the Archive projects or useful information please contact: *Peter and Gill Smith on 550726.*

Vacancy for a part-time stylist – phone 551160

LMH Hair & Beauty



Why travel to town? 
We specialise in colouring and cutting 
phone: 01360 551160 for an appointment

 lynemcicar@btinternet.com  

11 Main Street, Killearn, Stirlingshire, G63 9RJ www.lmhhair.co.uk

Scotland's Tapestry

What has around 160 panels, will take a small army of stitchers around 50,000 hours to complete using enough tapestry yarn to lay up and down Ben Nevis 37 times and covers twelve millennia of history? That would be the Great Tapestry of Scotland, the brainchild of novelist Alexander McCall Smith, historian Alistair Moffat and artist Andrew Crummy.

The tapestry – like the Bayeux tapestry, embroidered pictures on cloth – will illustrate Scotland's history from her geological beginnings to the opening of Parliament at Holyrood in 1999. Stitchers from all over the country are participating in this exciting adventure, and three panels are being tackled by local embroiderers.

A group from the Strathendrick Branch of Embroiderers' Guild are serial tapestry stitchers. They became involved in sewing one of the panels in the Prestonpans Tapestry in Spring 2010, calling themselves the 'Strathendrick Stitchers'. They completed one panel in record time – they only had a couple of months and it involved a lot of stitching. Their success led to an invitation to work on a double panel of the Great Tapestry – coming towards the end of the design – a seascape illustrating the Gaelic poem *An Ataireachd Ard*, with a strange musical woman emerging from the waves.

The Campsie Stitchers came into being when Nancy Bailey, Isobel Shaw and Jacky Young, along with Irene Kelso and Jackie Chiknas from Fintry came together to stitch 'James Watt and the Steam Engine' – the Industrial Revolution and the West of Scotland again inseparable. Unfortunately, the Fintry contingent is not active at the moment, but the stitching is progressing nevertheless, energised by get-togethers like the 'Blether' in Edinburgh and a further meeting in Glasgow in February, bringing together stitchers and their panels from all parts of the country. Truly inspiring!

Every panel of the tapestry has 'empty' spaces. These will be filled with designs suggested by the stitchers to complement the main theme. The musical lady

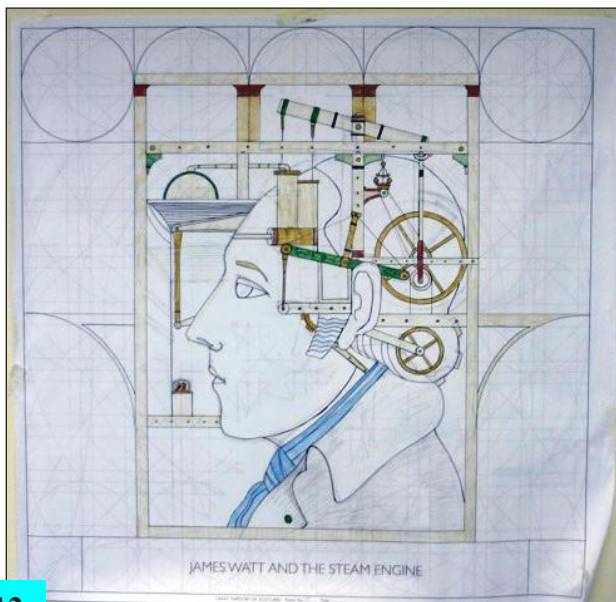
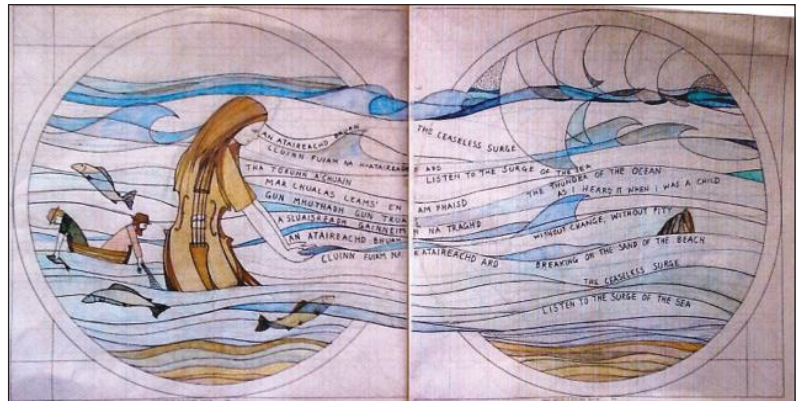
already includes a flock of geese and tiny crustaceans in the sand. James Watt will be accompanied by portraits of Joseph Black and Thomas Telford, as well as a mill building and a bridge.

All the stitching is to be completed by June, and assembled by the stitch coordinator, Dorie Wilkie, and her team in Edinburgh in time for the unveiling of the Great Tapestry of Scotland at Holyrood in September 2013.

If you are curious, and would like to see samples of some fabulous and imaginative stitching go to:

<http://scotlandstapestry.com/index.php> and
www.facebook.com/pages/The-Great-Tapestry-of-Scotland/220105004748373.

NB



FETCH AND FRAME

EXPERT PICTURE FRAMER AND ART GALLERY
ESTABLISHED 25 YEARS





Call in for a friendly, helpful, professional service.

For all your framing requirements.

We are open
7.30am to 5pm (3.30pm Saturday)
Closed Sunday and Monday

64 Clober Road Milngavie Glasgow G627SR
0141 956 4414
fetchandframe@btinternet.com

MEMBER OF THE FINE ART TRADE GUILD

www.gordonwilsonart.com



Endrick Property commenced trading on 1st September 2005. A husband and wife team with extensive experience in the residential property market stretching over four decades. Spotting a gap in the market covering the many villages within the G63 postcode we began offering a quality professional local service and now pride ourselves in possessing a deeper understanding of the local market. We are trusted and respected by our clients, and recognise the balance between buyers and sellers, landlords and tenants, homes and investments, location and decoration. In fact we make it our business to fully understand both sides of every story.

We have continued to widen our range of properties and services within a ten mile radius, and in some cases further, from our offices in Balfron.

Our letting and management department offers a comprehensive range of properties and services for prospective tenants and landlords. We are keen to expand our portfolio of properties to cover the ever growing demand for rental property within the immediate area.

We offer our clients a blend of quality presentation linked with the latest technology of internet, e-mail and attentive personal service. Whether you are a landlord, a seller, a tenant or a buyer we are here to help.

01360 449366



endrickproperty

**PART / FULL TIME ADMINISTRATIVE ASSISTANT
REQUIRED**

The successful applicant must have an excellent telephone manner and be prepared to handle the various challenges encountered when dealing with the sale and management of residential property.

Previous experience working within the property industry would be beneficial but not essential as training will be provided in all aspects of good property practice.

Please email/send your CV with a covering letter.

mail@endrickproperty.com
25 Station Road, Balfron, G63 0SX



www.endrickproperty.com



endrickproperty

- Residential Letting
- Residential Sales
- Property Search
- Property Management
- Property Maintenance
- Property Clearance

01360 449366
info@endrickproperty.com

Endrick Property,
25 Station Road,
Balfron, G63 0SX

Another Honour for Killearn Academic



Professor Pat Monaghan has become the first woman to take up the prestigious Regius Chair of Zoology at the University of Glasgow.

The Regius Chair of Zoology – the only one in the subject in the UK – was created in 1807 by King George III when it was called the Regius Chair in Natural History. The title was changed to zoology in 1903, and the last incumbent, Honorary Professor Keith Vickerman, held the position from 1984–98.

Professor Monaghan was appointed professor of animal ecology at Glasgow in 1997. She is an internationally recognised scientist and an elected Fellow of the Royal Society of Edinburgh and the Academia Europea.

Her work focuses on how animals deal with environmental change, particularly in recent years on the effects of early life conditions on later life performance, including the rate of ageing.

Patient Transport for Radiotherapy Treatment



A new service for the benefit of patients receiving radiotherapy treatment has been initiated in the Killearn and Balfron area by the Rotary Club of Strathendrick under the name 'Rotarun'.

Many patients requiring treatments at the Beatson West of Scotland Cancer Centre or elsewhere have experienced difficulty regarding transport. With little public transport available, patients have found that getting to and from their treatment can take the best part of a whole day, or perhaps impose on friends or relations and their cars more than one would wish.

Rotarun is operated in conjunction with the medical centres in Killearn and Balfron. Patients requiring transport into Glasgow or Larbert advise their GP when they receive an appointment letter for treatment. Arrangements will be made for an approved Rotarian driver to take the patient directly to his/her appointment by private car. When the day's treatment is finished, the patient will be returned home again in the same manner.

Rotarun is a free service to the patients – they are not involved in any expense. It is operated as a separate charity by the Rotary Club. Individuals wishing to make a donation to support this new initiative are invited to do so by contacting the Rotary Club of Strathendrick, noting that their donation is specifically for Rotarun.



Announcing the launch of the new Rotarun service, President Pamela Maxwell (*see photo above*) is accompanied by three new members of the Rotary Club of Strathendrick who have joined in the months since Pamela became president. They are Robin Hunter, a retired plumbing consultant, Moyra Peffer, a public relations consultant, and Hugh Nelson, a retired mechanical engineer. All are among the approved drivers for the Rotarun programme.

It is anticipated that the service will be expanded to cover patients from further afield, such as Drymen, Fintry and Buchlyvie.

Forthvale CONTRACTORS



Tree Surgeons

Firewood Suppliers

Fencing

Chemical Spraying

tel: 01877 387 202
mobile: 07890 331702
drew@forthvale.co.uk

The Drymen Pottery

Coffee Shop, Restaurant & Bar

Come and try something of our menu, we have a great selection, with one of our most popular dishes being our fish and chips. Or why not sit by one of our open fires and try our Highland Beef Steak Pie and finish your meal off with a slice of our home baking.

If you don't have time to stop, The Pottery has a wide range of meals on our carry out menu.

Available from 9.30am-9pm



9-11 Main Street, Drymen, Glasgow G63 0BJ Tel: 01360660458 E: info@thedrymenpottery.co.uk

So you thought walking was just hard work and boring!

Undeterred by the Scottish weather the local Killearn and Blane field walking group enjoyed a fun weekend away last summer – the photo says it all about the spirit of the group to get out and about whatever the weather. June Thomas, one of the walkers recounts their exploits.

‘The Killearn and Blane field Health Walking Group meets on a Thursday afternoon and after walking for an hour descends on a local café for tea and scones. The chat is always stimulating and sometimes lasts longer than the walk! Thus the suggestion that we should go away for a summer weekend was met with enthusiasm. The Loch Melfort Hotel was the chosen venue and 12 of our group were up for the adventure.

So on 17 August we all set off. Some of us made it to the Cairnbaan Hotel at the same time and had lunch together. Later we walked along the canal to watch the boats coming through the lock before heading to our destination. In the evening we met for a sumptuous dinner in the hotel. The chat as ever was spirited – no need for alcohol to loosen our tongues – and as we exchanged stories, found acquaintances in common and discussed the state of the nation, the sun made a fleeting appearance and gave a promise of things to come.

Needless to say this being a wet soggy summer it was raining on Saturday morning. Nevertheless, the intrepid walkers donned their wet weather gear and set off for Arduaine gardens. The walk was to take an hour and a half reaching a viewpoint from which could be seen Mull, Jura and other islands in between. As the drizzle became a deluge some felt an urgent need for coffee and headed back, but the rest raised golfing umbrellas and ploughed on though the trees to find a New Zealand bush which had flowered for the first time. We found the bush but not a flower remained. Still, there were many interesting plants, trees and ferns to keep us going until we got to the viewpoint where I am sure you could have seen the islands had they not been covered in cloud. The obligatory photos were taken and we trotted back to the hotel as fast as our walking sticks would take us.



Our Thursday leader, Shelagh, was not with us, but was in nearby Ardfern on a boat. We had agreed to meet for lunch at the Crafty Kitchen whose staff coped remarkably well with a sudden influx of fourteen people. By now the sun was out and after lunch we walked round the marina shedding layers and basking in the warmth. Soaked in the morning, scorched in the afternoon (steaming in the evening?): that’s Scotland for you!

The next morning we set off on our respective journeys home. As we left a pair of sea eagles drifted lazily above us. We agreed the weekend had been a great success.’

The group would love for new walkers to join them, so please come along and try a walk. Schedules detailing the local meeting places should be available in Killearn Health Centre or Killearn Pharmacy or contact:

Tricia (0300 028 0101, 07757 439111)
or email: cummingp@activestirling.org.uk

The Stirling Walking Network also runs other walks in the area.

Fruits & Roots

Stocking a wide variety of fresh seasonal fruit & veg at good prices. New products on sale include Graham's dairies milk and Cream, yogurt, cheese and frozen yogurt by Katie Rodgers!

Fruit & Veg boxes can be ordered and picked up weekly or delivered locally.

Pet food and supplies inc bird seed, small animal hay & straw, etc

30kg bags of burning peat £7.99 and bags of kindling at £3.95

151 Buchanan St, Balforn G63 0TE

Tel: 01360 440145

Open: 8.30am - 5pm Monday - Saturday

www.fruitsandrootsbalforn.co.uk



HANDY ANDY

SMALL JOBS, GARDEN & PROPERTY MAINTENANCE

Examples of jobs done

Interior

- Decorating
- Assembling Flat Pack Furniture
- General woodwork
- Kitchen fitting
- Basic Plumbing & Electrics
- Bathroom Suites

Exterior

- Gutter cleaning & repair
- Garden tidying
- Painting
- Fencing
- Sheds
- Decking
- Pressure washing

(This list is not exhaustive, if you do not see your job listed just phone.)

Call 01360 551100
or 07748754583

Laura Bruce. Beauty

NOW OPEN

11 MAIN STREET
KILLEARN G63 9RJ
01360 551 160
07817 106 943

lashes@laurabruce.com





The Killearn Hoolie

www.killearnhoolie.com

Hoolie helps village ventures

The success of the 2012 Killearn Hoolie has meant that funds have recently been made available to:

- Killearn Brownies for their panto visit
- Killearn Rainbows for their activity trip
- Killearn Golden Years Club for their annual outing
- Colourful Killearn for a new flower planter

If you are involved with a community group activity that could benefit from support from the Killearn Hoolie, please contact Jennifer Brown, Chair (01360 550681).

KILLEARN MEDIA PROJECT

Would you like to learn to use a camcorder?

Would you like to learn about video-editing?

Would you like to make a short film about community activities in Killearn?

If so, please contact Jaqui McAlpine
e-mail: jaquimcalpine@hotmail.com

or Nick Hawkins on 01360 550576



Destia Laiolo BALLET & THEATRE SCHOOL

REGISTERED TEACHER AND LIFE MEMBER ROYAL ACADEMY OF DANCE
REGISTERED TEACHER IMPERIAL SOCIETY TEACHERS OF DANCE
FELLOW AND EXAMINER OF THE SCOTTISH DANCE TEACHERS ALLIANCE
CLASSES IN BEARSDEN, KIRKINTILLOCH, KILLEARN & DRYMEN

- CLASSICAL BALLET
- MUSICAL THEATRE
- JAZZ
- RHYTHM TAP

Private Lessons by Arrangement

Tel: 0141 942 1998

Email: modestalaiolo@aol.com

The Killearn 10k and the Killearn Beer Festival Return! Saturday, 8 June 2013



STOP PRESS!! Encouraged by the success of *the Hoolie 10k*, and due to popular demand, *the Killearn 10k* has evolved into an annual event. Be the first to share all the wonderful qualities of this unique running event, and make *the Killearn 10k* a date on your fixtures calendar.

Participants are encouraged to sign up early online to ensure a place on the starting line. Final registration on the day will take place at the Black Bull where entrants will be piped out for the 11am start at the War Memorial. Keeping to the same beautiful route as *the Hoolie 10k*, the trail will head out through the village and onto the historic pipe track, following along the foothills of Dumgoyne, and returning via Ibert Road. The finish line will be back at the start where refreshments will be available at The Black Bull to welcome the participants home.

Enter online at www.killearn10k.com or contact Lorna Sinclair (07798 875284) for information.

Participate without running? Yes, please, by volunteering to help on the day. Contact Mary Fraser (07718 931789).

Later the same day the second *Killearn Beer Festival* will be held in The Old Mill car park. Last year's event was a runaway success, so a further selection of interesting ales, beautiful brews and some great craik will be on tap. Further details available from mark@markwhite.co.uk.

Pestle & Mortar

Your local Delicatessen, Coffee Shop & Gift Shop all rolled into one!

Food brands including Little Doone Balsamic Dressings, Findlaters Pies & Pates. Summer Isles Smoked Products and bakery products daily and to order from Bavarian Bakehouse.

Outside Catering

Gifts include pewter ware, slate, mugs, tableware, jewellery, bags, pashminas and much, much more.

Also an ever-growing selection of cards, calendars and wrapping paper.

No need to travel into town - it's all under one roof at:

Pestle & Mortar

41-43 Glasgow Road, Blanefield G63 9JD

or order online at

www.pestlemortar.com

Our brand new website.

Killearn Country Market – Use it or Lose It



Our community Country Market takes place on the first Saturday of each month in Killearn Church Hall until the new Village Hall is ready, 10am until 12.30pm.

The market combines a farmer's market, a craft fair and a coffee morning where you can simply chill and chat with friends and meet other folks living in Killearn whilst supporting local food and craft producers. The Market is a perfect meeting place for all of us across the age groups to mix and meet each other and enjoy cakes, coffee and a chat with friends.

Each month there is usually mouth-watering bread, meat, including pork products from rare-breed pigs, fresh pasta, cakes, fruit and vegetables, depending on the traders able to come on that month. There is always a wide-range of crafts to beautify the home or the person. The delicious cakes with tea or coffee are supplied by Killearn Tennis Club.

The Market was the brainchild of Killearn resident, Jaqui McAlpine, who ran it for several years before handing it over to another Killearn resident, Fiona Chautard. It is now part of Killearn Community Futures Company.

The success of the market depends on you and your support. The more people who come and buy, the greater the number and variety of traders we can attract. So why not make a note in your diaries for the first Saturday of each month and bring your friends and neighbours?

C'mon Killearn, give it a go – be a part of the local food revolution. The next market is on 6 April.



The Chloe McIntyre Memorial Annual Fun Day and 5K Fun Run/Walk will take place this year on Sunday, 5 May 2013 at McLaren Leisure Centre Sports Fields, Callander commencing at 11.30am. We are encouraging everyone to attend the day and support this event by signing up to walk, stroll or run the 5k.

The purpose is to raise funds for Yorkhill Hospital in memory of our daughter Chloe, who sadly passed away in Yorkhill Hospital in May 2008. I am sure that everyone who has had any experience of this place will agree what a fantastic place it is and thoroughly deserves any help and funds that we can provide. The aim is to raise enough funds to open a sensory room in Chloe's name that can be used in the hospital to help other babies and children with illnesses.

The day will start with the 5k fun run/walk which will leave from the McLaren Leisure Centre Sports Field then head along the scenic Forestry Commission Walk, then along Invertrossachs Road where the route will take you back to the finish line.

The Fun Day will have bouncy castle, water balls, inflatable slide, bungee run, stalls, barbeque, raffle, trampolines, face painting and lots more for a great family day out. Entry to Fun Day is free for everyone.

If you would like to take part in the Fun Run please register as soon as possible at www.yorkhillchildrensfoundationshop.org/events.html or contact them directly by telephone on 0141 201 6917 or email yorkhill.fund@ggc.scot.nhs.uk. All participants will receive sponsorship forms and a Yorkhill Children's Foundation running vest to be worn on the day.

The Fun Day and run will be an ideal day out for families. We would like as many people as possible to attend the day to support a fantastic charity, as this would not be possible without the help of the local community.

We all look forward to seeing you on the day.

KILLEARN LIMITED EDITION PAPER CUT



Signed and numbered (100). Individually lasercut to order.

Black card/ white mountboard backing (700 x 520).

Option colours / personalisation available...

3 layer Perspex - £350 Wood framed - £250 Unframed - £217

On display at The Old Mill, Killearn and Aizle Framing, Ballat

M: 07801 817302 T: 01360 850240

christine.thomson@tiscali.co.uk www.facebook.com/portraitsandillustrations

THE VILLAGE HALL NOW *LOC*

Until now, the Village Hall has given a very good impression of a permanently unfinished building site. We had grown so used to seeing the steel frame of the biggest wing standing proudly at the top of Station Road that it came as a bit of a shock when, after the Christmas break, workmen descended on the building and began to ‘clothe’ the northern end in glass and timber. As I write (end of February), the roof is virtually finished and the boundary walls are taking shape around the entrances, with the windows overlooking the glebe on site and ready to be fitted. At the other end of the site, overlooking the Kirk’s car park, the exterior of the new kitchen is almost complete and the new raised windows in the small meeting room are being faced. The exterior shape of the new building is almost complete – although not finished in the final sense of the word. In the opinion of the writer, particularly approaching it coming up Station Road, the whole building has a more balanced look about it than before.

In the main hall and now in the other spaces as they are made wind and weather proof, work has been going on to complete the internals and to fit out the plastering, plumbing and electrical installations. A look into the new basement would show a squad of men wearing yellow vests with ‘WMQ’ printed on them – you may indeed see them walking down to Spar or the Co-op for their lunches. These are the electricians who have until now been burrowing in the basement and main hall. Soon they will be working in the extensions, especially in the main extension where they can be seen behind the huge window which has appeared suddenly on the gable end.

As we move towards the completion date, more and more of the subcontractors will appear, carry out their smaller portion of the work, and disappear again. This may mean that parking will become even more difficult in the top end of the village than before. We have spoken with Haddens, the main contractor, and they assure us that they will do everything possible to avoid blocking entrances and roads over the next two months or so.



DKS LIKE THE VILLAGE HALL!

So, what will the interior look like when it is finished? Unfortunately, we cannot show you any photographs until it is actually finished. However we can show you an artist's impressions of the main hall and of the reception area, which have been painted by a friend of Killearn, Bill Millan MBE of Bathgate. These are very much a first run, but do display the atmosphere we are looking for in the final building. The building committee is comparing colours, materials and furniture for interiors and should have this task completed by the end of February.

There will be a set of toilets at the main entrance and a further set in the basement for the youth facilities, and for use at major functions, such as weddings. Negotiations with applicants to run the coffee shop are well under way and we expect this to be running on the day of the opening celebration.

If you go into the website for the Hall

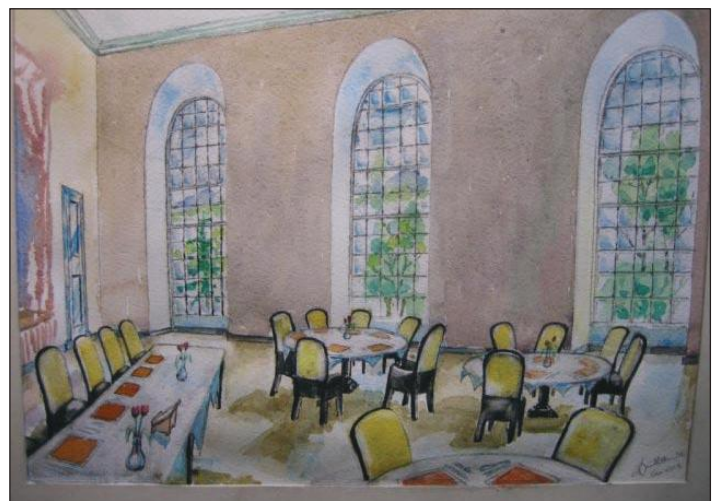
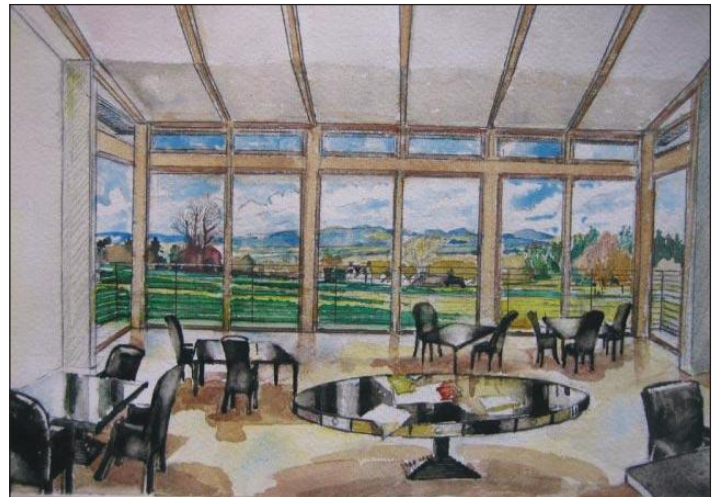
www.killearnvillagehall.co.uk

there is a site plan showing the spaces which are for let, and lots of information about each area, together with the (a bit higher than before, I'm afraid) charges for rental.

And now one question that the Village Hall Operating Committee is addressing, or at least has started to address, is how shall we mark the actual date of the opening?

The most popular idea at present is to have a showcase of village organisations, particularly these which have used the hall in the past, both to give them an opportunity to show off their talents and to show off the flexibility of the halls complex. We also hope to have demonstrations during the day for children from the Fire Service and rescue organisations. If you are leading a local organisation, someone from the Village Hall committee will be in touch to ask how you would like to contribute to the celebration.

When will this be? We can't wait to see the final result, and we are sure everyone in the village feels the same way. As we are at 'Opening Day -81' approximately at time of going



to press, we don't yet know exactly. The best information for now is that the contractors anticipate clearing the site at the end of April, subject to unforeseen circumstances. So, the best guess is the Village Hall should open at the beginning of May.

The Hall Committee is confident that the whole village will come together and help to make the Grand Opening one of festivity.

David Rodger



Ash dieback in the Parish of Killearn

Despite the fact that I am a tree surgeon, and could benefit from a big upturn in work, I am desperately sad about ash dieback. I have three veteran ash trees on my driveway leading up to my house and will be deeply saddened if they die in the forthcoming years. Rooks annually nest in a hollow branch of one tree and I dread to think what the impact on wildlife of this disease will be.

Killearn parish has thousands of ash trees in woodland and along paths and roads. They are very easy to identify in the winter. They have black charcoal coloured buds on the tips of their branches, and they burst into leaf after all other species of tree.

Will ash dieback change our landscape?

Yes. Ash is a dense hardwood that has been essential through history. Cartwrights used ash for cart wheels, and ash was used in Agincourt for arrow shafts. Today it is highly prized as a fire wood which requires less seasoning than other woods. Green wood workers love ash as a timber and use it for the likes of Windsor chairs. There are about 80 million native ash trees, making up 30 per cent of our indigenous deciduous woodland, so any reduction will have serious consequences to our views along roads and in woodland.

What is it and will it spread?

Charal dieback of ash is a fungal disease of ash trees which has been found in the UK. The fungal disease called chalara fraxinea (*C. fraxinea*) causes leaf loss and crown dieback in affected trees and can lead to tree death. Chalara fraxinea is a disease that has decimated ash tree species throughout Northern Europe, already affecting over 90 per cent of ash trees in Denmark and Sweden, and is present as far as Belgium. Until recently, the UK was unaffected, but it now seems that imports of ash saplings have released the disease into the wild. Other commentators suggest that the disease has been airborne, and blown across from the continent. Whatever the origins, if it were to spread like it has in Europe, it will have a devastating effect on our ash tree population.

What impact will it have on wildlife?

The threat to wildlife could be significant. Rare moths, such as the white spotted pinion, and the colourful lemon slug could die with the trees. This in turn would have a knock on effect for those that feed on these creatures like frogs, bats, birds and hedgehogs.



Blackened, dead leaves – may look a bit like frost damage

Any tree surgeon will tell you that the best hollow trunks are those of ash trees. I have personally come across a colony of wild bees and seen owls in ash trees.

How can we be proactive?

We must learn from our mistakes and not continually point the finger. We must recognise that our woodlands are fragile and be more careful about where tree-planting stock is obtained in future. We must control and limit the importing of seeds and trees and create more home-grown nurseries, and these nurseries should be properly screened. Australia offers a great example of biological protection.

1. When planting trees, think about whether you are purchasing indigenous stock.
Visit www.AshTag.org.
2. It is very difficult to identify the presence of dieback in the winter months when the trees have shed their leaves. It is vitally important to check your trees in the summer because all tree owners have a 'duty of care' by law to look after their trees and make sure there is no obvious threat.
3. If you do suspect an outbreak, there is help in identifying ash dieback. The Forestry Commission has an excellent website which includes an up-to-date map showing the outbreak's spread in the UK (www.forestry.gov.uk/chalara), and an identification video is available on YouTube from the Food & Environmental Research Agency (FERA) (www.youtube.com/user/FeraUK1). FERA also has a series of pictures on their website: (www.fera.defra.gov.uk/plants/plantHealth/pestsDiseases/chalaraInfo.cfm). Two of the nine pictures are reproduced below. There is a free App available.

Are all ash trees doomed?

On a brighter note, remember the resilience of nature and trees, and draw an analogy with the elm tree. Some elm trees were immune to Dutch Elm Disease and these elms now form the primary stock for all elm tree planting today. In Europe, although most ash trees have died, some have proved resistant.

Archie Wilson
Tree Cottage, Killearn G639PZ
archie@wood-business.co.uk

I also run a tree surgery directory: www.treesurgery.com



Dark lesions – often long, thin and diamond-shaped

Water and Sewerage

Fascinating topics, believe it or not! Since earliest times man has endeavoured to manage his environment and control storm, waste and supply waters. The technologies we currently deploy include several scientific and engineering disciplines. These matters are becoming increasingly important, not just internationally, but locally. The principal issues in the UK are shortages, flooding and pollution.

Previously, communities operated on a single pipe drainage system combining foul and storm water disposal. This meant that increasingly large volumes of contaminated effluent had to be managed before discharge, whether treated or not.

In Killearn, most of the village is connected to a two-pipe system whereby the storm water is conducted to natural watercourses, and the foul effluent is sent to the treatment works at the foot of Drumbeg Loan. However there have been problems.

The Ibert and Kirkhouse burns drain off the Campsie hillside, flow through the village and combine in Killearn Glen. The water enters the Blane, then the salmon-bearing River Endrick thence to Loch Lomond and eventually the Irish Sea and Atlantic Ocean via the rivers Leven and Clyde.

The physical problems we see arising in Killearn are due to the increasing volumes of rainwater to be disposed of. Rainfall seems to be increasing in duration and intensity; the conductors are of fixed dimension so inevitably surcharging occurs. For example, the Ibert Burn culvert under the Well Green either cannot cope or becomes obstructed, causing flooding, and the brick outfall chamber in the Crowhill 'cows' field' is being breached by the pressure of water.

Another aspect of this is the increasing rate of water run-off caused by man's interventions such as canalising watercourses, restricting flood plains, and increasing his impermeable hard surface areas (roads, driveways, roofs, car parks) which have been drained directly into the overburdened piped system. The run-off delay afforded by natural surfaces and soakaways such as grasslands has been diminished correspondingly. Measures to mitigate this are being implemented, as can be seen currently at the 'turnip field' and Village Hall projects where underground attenuation tanks (like egg-crates) are being formed to store excess rainwater and then control its release by utilising vortex restrictors (hydrobrakes).

Pollution problems also have been evident locally. The quality of our storm water and treated foul effluent discharges are obviously crucial when you consider where they end up. Loch Lomond is now also a supply reservoir. The authorities are endeavouring to control issues such as phosphorous loading, acidification and eutrophication – the depletion of oxygen in water due to it becoming rich in dissolved nutrients from fertilizers or sewage.



In Crowhill field (pictured above) there is a crossover chamber constructed so that the foul sewer can overflow into the adjacent storm system in the event of a surcharge. Obviously this should happen only very occasionally, and is preferable to having the foul sewer back up. However, the storm sewer is surcharging as noted above, so I don't know if it's possible that it could be scouring the foul sewer, leading to some of the pollution which has been so evident in the field. Additionally, Scottish Water and SEPA, at the instance of Killearn Community Council, have inspected the system and found that some properties were incorrectly discharging foul effluent into the storm drainage system. Some householders acted very promptly indeed, but we await confirmation that this has been completely rectified.

A leaking heating-oil tank caused considerable contamination of the Ibert Burn and Killearn Glen. The source was identified and the tank emptied. The heavy rains have been effective in washing the oil away downstream.

Another related issue is what finds its way down our road gullies into the storm system. When car washing, for instance, do please endeavour to minimise the soaps and detergents which enter the drains, and empty buckets appropriately elsewhere. Prevent chemicals such as paint and cement from being poured down the gullies.

Nigel Kelly

www. **MacColl** Landscaping.com
Rooted in Quality

When it comes to gutter maintenance, for many people it is a case of out of sight, out of mind, but ignoring a problem can result in hefty repair bills later on. It is recommended by the Building Research Establishment that gutters are inspected/cleared at least once a year. Ignoring a problem will only result in it getting worse (it won't repair itself!) and possibly causing serious damage to the property. Trapped water in a gutter gets blown by the wind onto fascia boards creating a continuous wet/dry cycle. This can cause wood rot and/or peeling paint, ultimately requiring complete replacement of the whole system if left unchecked.

Using an Omnipole GutterVac. Gutters, beams and ledges are cleaned up to 52 feet high with the operators feet safely on the ground.



Mob: 07727 045939
Email: scott_maccoll@hotmail.co.uk

Meet Elaine Bannatyne

As the new term began after a relaxing festive break, and along with the risk of contracting 'flu, Balfron High School had acquired something that would not only last for the coming week. As we waved farewell to Mrs Corry, who had been head teacher for over ten years, we gave a warm and excited welcome to Ms Bannatyne, whom we are hopeful will be with us for just as long. I had the pleasure to sit down with her, and get an idea of the plans she has for Balfron High School and the community around it.

What were your first impressions of Balfron High School?

My first impression of the school was that it was a very friendly and caring place, where staff, in particular, are extremely committed to the pupils.

What key issues do you feel need addressed within the school?

There are a number of priorities in the school already for improvement. My job really at the moment is to ensure that they are fulfilled, so that includes making sure learning and teaching in the classroom is good, that the Curriculum for Excellence is being carried out, and that everyone is having a great overall school experience. I've spent these first two weeks meeting with many staff in the school and getting their views on the strengths within the school and what they feel needs to be improved, so using that and obviously other evaluations from talking with pupils and parents that will help me decide the priorities. So it's not just me coming in and deciding, 'Oh I fancy doing that', but they are genuinely what our community needs to move forward.

Do you have anything new you plan on introducing to the school? Any new projects for example?

I think that links in with the last question. I think that there are already so many wonderful things going on so I am quite keen to get involved with them. It's important that I recognise that, and I'm not going to say, 'Right that's been done, it's not going to be done any longer, instead I'm going to bring this in'. No, I wouldn't do that. At the moment my plans are around really knowing the school well before I decide to work with everyone in choosing what should be next.

How do you feel about the current uniform, as most people can see it is more casual than other neighbouring schools?

The uniform is the subject I have been asked most about since I have arrived. Everybody wants to know if we are going to make changes to the uniform – are we going to have blazers, and other questions along that line. I think when the uniform is worn properly, it's good. At the moment my priority is to make sure everybody is wearing it as they should be, because you are right, it is being worn casually by some pupils – not by all pupils; some pupils look fantastic. Right now it is important that everybody is wearing it as it should be, as that is the expectation. Whether we change it or make further steps in the future, once I have spoken to everybody about that, if we believe that is the right thing



to do, then that's what we will do. But we won't introduce any changes until the new session, as it would be unfair to expect people to buy something new at this point in the year.

What do you believe made you the perfect candidate for the job?

I would like to think that it would be my commitment to young people. I have a real love of learning and hope that I can work with everybody to make sure that the pupils in the school have a fantastic experience. Not just a great set of qualifications, but a really rounded experience that will develop them as people who will be effective when they leave and go do whatever it is that comes next.

What would you say is your favourite thing about Balfron High School?

My favourite thing about the school so far is how genuine and friendly the people who make it are. The pupils in particular; when I arrived even on that very first day, a number of pupils came up to me and said, 'Welcome to Balfron High School', and that was fantastic. That was a great start I have to say; that was a brilliant first impression.

What inspired you first of all to become a teacher?

When I was at school I enjoyed everything about it. It was a great experience for me, and it was a highly positive place. I participated in a lot of sport when I was a pupil and getting the opportunity then to have a decent set of Highers and to have the option to go on and study to be a PE teacher, that was fantastic for me. In those four years we did a lot of teaching practice in many schools and I really, really loved it. I couldn't imagine doing anything else. I suppose having a positive experience myself my drive is to create that for everybody here at Balfron High.

What has been the hardest part of starting at a new school?
Not knowing where anything is, or how things work!

It's kind of similar to being a new first year I suppose?

Worrying whether my head's going to be flushed down the loo, is that not the classic thing that first years worry about? I have to say I wasn't so much worried about that. But the hardest thing is just not knowing who people were at first or where everything was, and having to get used to the systems that were in place. However everybody – staff and pupils – have been so friendly, it has been very easy to get to grips with everything. So I feel very lucky that I have come to a place like this.

The community is a huge part of the school, so what are your initial thoughts on the community as a whole?

The school is part of the community and is open the whole time, and obviously many people in the community use the building. I would love to continue the work that goes on to give the school a profile in the community as well, and for the community to help contribute to what goes on in the school and vice versa, so that we have a really strong partnership and so that the profile of the school in the community is a really positive one.

(Continued on p25)

Killearn Primary School News

The first terms of school have been very exciting with the new head teacher, Mrs Craigie.

Primary 7 have been creating a transition project based on Africa. The Transition Project is to show the teachers in Balfron High School what the pupils are capable of, and it has been great fun.

On Wednesday, 31 October, Killearn Primary School held a Halloween parade. There were loads of fantastic costumes! People even dressed as avatars, gravestones and lots of other spooky stuff.

This year the school is raising money to support Guide Dogs. Our goal is £300, to sponsor a puppy class to be trained as guide dogs – and we are getting there! We had a very special visit from Michelle, a wonderful guide dog, and her owner. We even got to see the dog getting her teeth brushed with chicken-flavoured toothpaste!

The Christmas Concert had us all warmed up for the Christmas Season and everybody thoroughly enjoyed it. The singing was brilliant! The Nativity, especially the costumes, was loved by all.



The Christmas Concert

Once again this year we had fantastic Christmas parties. We enjoyed learning the Christmas dances in P.E. and the parties were a great success, with Father Christmas managing to take some time out from his busy schedule to visit the nursery and P1 and P2 parties.



Dick Whittington

On Friday, 12 January, Hop Scotch Theatre got us all over the first week of school with an amazing pantomime performance – *Dick Whittington*. The play was about a boy who lived in a poor town and wanted to make his fortune in London. It was hilariously funny and got everyone laughing.

The school had a distinct Scottish feel throughout January as we prepared for our annual Burns celebrations. Everyone was involved in learning Scottish poems and songs, P5/4 hosted a Burns Supper and newly created tartans were displayed around the walls.

We celebrated Burns Day in traditional style at Killearn Primary, with performances of Scottish poems and songs. From the Nursery children performing *Herrin's Heid*, through to *Tam O'Shanter* from the P7s – with all sorts in between, like *The Puddock*,



Sweet sounds from the choir

The Piper O'Dundee and *Listen tae the Teacher*. Stunning performances were given by everyone, making judging difficult. The children selected winners from each year group, who then battled it out in a most entertaining final. Hamish Finn was chosen as the overall winner for his expression-filled excerpt from *Tam O'Shanter*.



Proud winners

Everyone who attended the Burns Coffee Morning in the Village Hall on Saturday, 26 January, was thoroughly entertained, and well fed with shortbread and other tasty treats. Thank you to the PTA for organising the coffee morning and to all the performers.

The Press Gang

Meet Elaine Bannatyne (Continued)

Are there any certain areas of the school that you are looking to focus more on than others?

No, I certainly wouldn't look at one department in favour of another. The whole school is so important and that's critical for me because the young people will all have different strengths and weaknesses. So it is important that every department or every team in the school is functioning very, very well, so that whoever you are in the school, you have a really high quality experience. You enjoy it and you do well at it, that's critical. So I don't have a preference for one area over another.

I thank Ms Bannatyne for her time. I'm excited about the coming year that will give myself and others the opportunity to work closely with the new head teacher to make Balfron High School a more enjoyable learning environment, with opportunities to suit all.

Heather Banks

Strathendrick Singers' Spring Concert will be held on Sunday, 24 March at 7pm in Killearn Kirk.

The concert will feature:

***Christ lag in Todes Banden* by Bach**

***Five Mystical Songs* by Vaughan Williams**

Eternal Light

***Requiem* by Howard Goodall.**

Tickets at door or from choir members.

For information, phone Pat (550074).

www.strathendricksingers.org.uk



Christmas Post 2012

The Killearn Guides and Boys' Brigade again took up the challenge of operating a Christmas Post within the Village speed boundaries.

This year we delivered 3,250 cards to places around the village and also a few into the post proper that had been placed in our box. We also managed to return one that had been addressed to "Mum"!

The Village achieved a great total of £864 to give to CHAS this year. Whilst the total is down on last year, the actual giving per card has increased from 22.5p to 27p per card.

A huge thank you from the Guides and Boys' Brigade for your support.

I believe that this coming Christmas will be the 20th year of operating the post in Killearn. In this time we have supported Save the Children, an orphanage in Chile that I had visited in 1997 and, for the last fourteen years, CHAS, and raised an enormous amount to give to them. It has only been possible with your support. Thank you.

Sue Beck
Neil Evans



The ladies of Strathendrick Inner Wheel are holding a fashion show in Balfron High School on Friday, 19 April 2013.

The evening starts at 6.30pm with a glass of wine and shortbread followed by the show in which Vanity Fair of Bearsden and Helensburgh will be displaying their latest fashions.

The cost of a ticket is £10.

The proceeds are going to the Paul O'Gorman Leukaemia Research Centre at Gartnavel Hospital.

**Tickets are available from:
Betty Meikle (550579), Ann O'Neill (550605)
or Rita Harris (55045).**

More Great Drama from Fintry



In By The Half

FADS (Fintry Amateur Dramatic Society) has two one-act plays planned for April following on from the success of their March musical. *In By The Half* is a funny and moving script by the ever-popular Jimmy Chinn. An ageing West End actress struggles with her retirement, yet has energy enough for cutting and acerbic comments to those who assist her. Everything changes when she and her daughter cope with a disturbing event. The play is directed by Lorna Flisch.

FADS' Youth Play, *An Outline of History* by David Campton, illustrates how the same issues reoccur time after time in human history. While it is thought provoking, it is also very entertaining! The cast consists of fourteen youngsters who are taking considerable control of the production, including the choreography, with support from Tony Flisch and Sheila Fraser. Helping the cast with devising their own production is exciting, fun and unpredictable, and FADS are so impressed with their ideas and enthusiasm. As they enjoy this new challenge for FADS' Youth we are also sure the final outcome will be enjoyed equally by their audience.


Both plays are in the Menzies Hall, Main Street, Fintry at 7.30pm on Friday and Saturday, 26 and 27 April.

For ticket ordering call: *Liz Brown on (860078)*
or find more information at: www.fintrydrama.org.uk.



An Outline of History

FREE ESTIMATES



N. D. STEWART
Electrical Services
Killearn

TEL: 01360 551509 MOBILE: 07970 755414



Balfrom Bowling Club 1913–2013

During this coming year Balfrom Bowling Club is celebrating its centenary and the present committee would like to take the opportunity to raise the profile of the club and to encourage new members – male and female and adult and junior – to take up the sport.

The new season commences with the opening day on Saturday, 13 April 2013, and throughout the season, which ends in September, we have organised a full programme of events which will include all the usual club competitions, open competitions, friendly games with visiting clubs, charity days and junior competitions. We will also host a number of district and county finals.

If you have some time to spare, want some gentle exercise in the fresh air with a fabulous view of the hills, why not join us? It's fun, competitive, inexpensive and suitable for all ages and abilities and you would be made most welcome.

Don't have bowls? No excuse! We would encourage new members to try various sizes and weights before thinking of buying their own, and the club have bowls that can be borrowed, existing members will also lend their bowls. The only kit you would require to get started would be flat, plain-soled footwear for use on the green.

Current annual subscriptions are as follows:

- Up to 60 years of age £70.00
- Over 60 years of age £55.00
- Juniors £10.00

To further encourage new members to join us and try their hand at bowling we have reduced this figure by half for their first year.

Please consider joining us, for further information/application form: contact Robert Cranstoun, secretary (440697) or email rrrcranstoun@tiscali.co.uk.



Photograph courtesy of Hugh Cameron©

Public Notice – The Register of Electors

Plans are being prepared for the next annual canvass of households this autumn which will request details of every resident eligible elector at every address for a March 2014 register. This is very important: this will be the Register of Electors used for the 2014 European Parliament election and the Referendum on Scottish Independence. For the purposes of the referendum, the canvass will also ask for details of any young person, currently under 16, who will be 16 or over by 31 December 2014.

For more information on registering to vote and voting by post or proxy, go to: www.saa.gov.uk/central or www.aboutmyvote.co.uk.

DAVID Mac DONALD

Quality Family Butcher

The Square
Drymen
Tel: 01360 660512



54 Main Street
Killearn
Tel: 01360 550502

Top quality Beef, Lamb, Pork, Poultry, Fish and Game
Home-made Award-Winning Steak pies, Sausages and Burgers
Fruit and Vegetables
Wide selection of Cheeses and Pâtés



At The Ward Toll
Balfrom Station G63 0QZ
4 miles south of
Aberfoyle on the A81

Follow us on facebook

Garden Centre • Pet Shop • Orchid House

Farm Shop Now Open

- All your gardening needs catered for
- Bedding plants and hanging baskets
- Houseplants, orchids and accessories
- Food and care items for small animals
- Dog ramps now in stock
- Farm shop – local meat, cheeses, veg, jams, etc.
- Firewood, peat and coal

Free expert gardening advice

Opening Hours:

Mon – Sat: 9.00 am – 5.00 pm Sun: 10.00 am – 5.00 pm
info@benviewgardencentre.co.uk 01360 850525

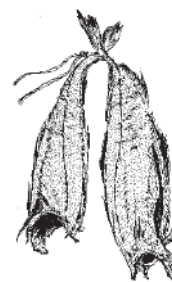
Architects

New Build Houses
Extensions
Conservation
Green Buildings
House Types



Thomas Robinson Architects
www.thomasrobinsonarchitects.co.uk
01360 661144

STUARTS FRESH FISH *delivered to your door*



EVERY
WEDNESDAY
Balfrom – a.m.
Killearn – p.m.

Orders taken/
phone for service
01241 876254

Visit our website for smokies by post
www.arbroathsmokiesdirect.co.uk

Rugby Round Up

Under 16s have great cup run

Balfron Under 16s enjoyed a fine run in the Brewin Dolphin Scottish Schools Plate this season, winning all the way through to the national semi-final! Their sojourn began back in September with a narrow 10–7 win over McLaren High School. A walk-over against Stirling High School preceded another close game in the Regional Final, when Balfron beat Linlithgow 14–12. And so to the nationals and a third consecutive win by three or less points, when the boys beat Portobello away 17–15! The adventure came to an end with a valiant defeat to Jedburgh Grammar School 8–20 in the semi-final. Well done, boys!

Otherwise the winter weather has severely constrained the playing activities of Minis, Midis and Seniors alike at Strathendrick, and talk of summer rugby is bound to begin again.

However players and supporters can look forward to traditional end of season jamborees at Fintry: the AGM and President's XV vs Captain's XV match will precede the Annual Dinner on Saturday, 27 April. The Seventh Annual Mini Rugby Charity Tournament – attracting hundreds of young players from throughout the area and raising thousands of pounds for local hospices – will bring the season to a close on Sunday, 28 April.

For further information:

visit www.pitchero.com/clubs/strathendrickrfc.

Strathendrick Minis at Scotstoun

A team of Primary 7 players from Strathendrick Mini's took part in a Rugby Festival at Scotstoun on Friday, 22 February before the Glasgow Warriors vs Ulster game.

The team was one of eight invited to participate in the tournament, with the final being played during the half time interval in front of a crowd of over 5,000.

The boys put in sparkling performances during their pool games and won through to the final against Birkmyre.

It was a close run game and, at the final whistle, a one all draw saw both teams leave the pitch with pride.



23rd Forth Valley Scout Group

Start Your Scouting Adventure Here!

23rd Forth Valley Scouts provides a fun, exciting, varied and balanced programme for boys and girls aged 6 to 14, including outdoor activities, residential trips, community projects, creative and craft projects, physical activities, and much more.



We are looking for new members to join in the fun with all of the sections:



**NEW SCOUT SECTION
STARTS 5TH MARCH**

Beavers

Open to all young people between 6 and 8 years.

Meet Wednesdays 6.30 – 7.30pm Killearn School Hall.

Contact Andy on clan.begbie@btinternet.com

Cubs

Open to all young people between 8 and 10 years.

Meet Wednesdays 7.45 – 8.45pm Killearn School Hall.

Contact Amanda on aforbes5@btinternet.com

Scouts

Open to all young people aged between 10 and 14 years.

Meet Tuesdays, from 5th March, 7 – 8.15pm, Killearn School Hall.

Contact Carly on jacquescarly@btinternet.com



All of the sections and the group administration are run by volunteers. We welcome and need help and support from adults and young leaders to continue Scouting in Killearn. If you are interested in helping in any capacity – from one-off to regular, or committee membership – please contact Carly on jacquescarly@btinternet.com.

Curling – Second Stones

The first half of the 2012/13 season for Strathendrick Curling Club is now complete with no disruptions because of bad weather. We were, however, treated to some very cold weather just before Christmas, which resulted in perfect conditions on Drumore Pond. A day was spent curling outside with a barbecue and other refreshments.



Outdoor curling at Drumore Pond, December 2012

Now for routine matters. The main club Autumn League was won by Mike Jackson's team of Maurice Rennie, Gillian Kingslake, Phillip Pain and Tony Flisch by one point from Steve Holden's team of Stan Moore, John Anderson and John O'Neill.

The Annual Ladies v Gents competition was won by the Ladies for the second year running. This year, without any male assistance, they had a notable victory by 16 ends to 6. This included two scores of six shots in an end! The Gents are no doubt planning revenge for next year.

The Ladies Autumn League for the Peat Trophy was won by Jean Anderson's team of Gill Smith, Isabel Robertson (one of our new members) and Gail Pain with 6 points and plus 18 shots from Pat Roger's team of Carol Hill, Alison Robinson and Norma Thornton also with 6 points but plus 12 shots.



The Ladies decide the winning stone, Peat League 2012

The Christmas Bonspiel was won by Ann Roy's team of Lorna Craigie (another new member) and Norma Mitchell. This was followed by lunch at the Riverside, who efficiently produced an excellent meal as usual.

The Ladies also played a friendly match against West Stirlingshire Ladies. Each club won one match, with West Stirlingshire winning by virtue of scoring 17 shots to 16. The result came down to the last stone. As the two clubs share quite a number of members, it was a very friendly occasion.

In the Forth and Endrick Province leagues, Strathendrick are in joint second place with Fintry in the Robert Paterson Shield, one point behind Drymen. We still have three matches to play, including against Drymen. In the Forest Hills League, there have been some rather unexpected results and we are lying fifth out of the six clubs.

In the Province Medal bonspiel, Strathendrick did not play particularly well, finishing up in fourth position out of eight clubs.

In the Province Points competition (compulsory disciplines), Stan Moore came joint third and the two best players from the club (Stan and Mike Jackson) tied for second place.

John Phillips and his team of our own Norman Robertson, Robert Armstrong from Kippen and Ian McNeish qualified for the National Masters final at Greenacres in March. This is a Royal Caledonian Curling Club competition for players over a certain age.

Gill Smith has been accepted on the Royal Caledonian Ladies Tour to Sweden next November and hopes to report on this in the 2014 Spring *Courier*.

We recently had curling news of former Strathendrick Curling Club

member and Killearn resident, Jim Walker. His new club in Pitlochry have been restoring a disused curling pond above the town and now have it ready for use, if the weather obliges. Jim helped with the sluice gate and the curling equipment as he did with our own Drumore Pond. Daughter Sarah is now the president of their home club of Toberargan.

On the social front, we had our usual successful meander on 2 January. The weather was not particularly good, but not bad enough to dampen the spirits of the walkers. We enjoyed some particularly good 'Heilan Coo' pies made for us by Ian and Agnes Bowie at our lunch stop at Little Carbeth, and it was very kind of Jean Clark to bring some refreshments to Drumore Pond on our brief stop there. The evening went with a bang with a very amusing game of charades at Bob and Fiona Glass' house.

If you want an interest and some exercise to keep you occupied during the winter months and would like to have a go at curling, contact: Fiona Glass (550646) or George Harris (550456) or look at our website:

www.strathendrickcurling.org.uk



New Year Meander at Drumore Pond, January 2013

JOHN CURRIE BRICK & STONEMASONRY TRADITIONAL SKILLS FOR YOUR HOME & GARDEN

STONE WALLING & TRADITIONAL BRICKWORK
NATURAL INDIAN & YORK STONE PAVING
BARN & PROPERTY RENOVATION
BESPOKE FEATURES
DRY STONE WALLING
LIME MORTAR WORK & REPOINTING
STEPS & PATHS
COBBLES & GRANITE
FIREPLACES
ALL PROPERTY MAINTENANCE

CALL TODAY FOR FREE
ADVICE & QUOTATION

Telephone 01360 550087

Mobile 07966 864811

Email johncurrie@hotmail.com

Tennis Everyone!

Spring has sprung, so it is time for tennis players to swing into action. For those who have always fancied playing tennis, the Open Day on Saturday, 27 April 2013, is as good a time as any to venture onto the courts and have a hit.

Killearn Tennis Club caters for all abilities. Ladies' and Gents' social tennis nights will be starting soon on Wednesday nights. This is a good night to come along, meet members and have a few light-hearted games. Open Days and family tournaments with barbeques will also be run throughout the season.

For more competitive members, teams are entered into the Central District leagues. All teams performed well last year and it is hoped that 2013 will be even better.

One keen tennis member, Tricia Scott – who is also a regular coaching assistant

– was rewarded for all her hard work with an Active Stirling Sporting Achievement Award after her nomination by Killearn Tennis Club.

Sadly, Chris Jewell has stepped down as Head Coach as he has secured a teaching post in Oban High School.

The committee would like to take this opportunity to thank Chris for all his hard work and dedication to the coaching of the kids at Killearn Tennis Club and to wish him much success in Oban. A new coach is being sought, and details of the season's coaching programme will be publicised shortly.

The Committee and members of the club have been running the village's country market tearoom as a fundraising effort. It is planned to continue this enterprise this season, so if you are able to help in terms of time or baking, do come along and support. It takes place on the first Saturday of most months in the Church Hall.

A plea to those who think the tennis courts are a free facility – sadly they are not! Please pay the fees and enjoy the courts. TAGs week, when fees can be paid is from 15–19 April from 7.30–8.30pm.

This is a good time to come along to the clubhouse, meet the committee and learn about the club.

New members can contact:

Anne (550253) or Elaine (551120).

A final date for your diary: the AGM will be held on 16 March 2013 at 11am in the Clubhouse. All senior members are most welcome.

S. Bell



Tricia Scott and her silver presentation plate

www. **MacColl** Landscaping.com
 Rooted in Quality
Tel: 01360 550997
Mob: 07727 045939
 For further information please look at our new website

BAXTER Accounting & Tax Services
 11 Milngavie Rd, Strathblane
 For all the accounting and tax needs of you and your business

- Self Assessment
- Accounts preparation
- Corporation tax
- Payroll and PAYE
- VAT
- Capital Gains & Inheritance tax
- Companies House admin
- Stamp duty & SDLT

01360 770320
www.baxtertax.co.uk
enquiries@baxtertax.co.uk

BODY CONTROL PILATES® CLASSES

Body Control Pilates® transforms the way you use your body, using slow, controlled movement to improve posture, tone and general wellbeing.

Small class sizes allow for individual tuition, making Body Control Pilates® a benchmark for safe and effective teaching of the world-famous Method.

For details of daytime and evening classes in Gartocharn and Blane field, call Jane Meek on 01360 771742/07759182236 or e-mail janemfr@tiscali.co.uk

Body Control Pilates and the Body Control Pilates logo are registered Trade Marks used under licence.

OLDHALL HOLIDAY COTTAGES

Also available for short breaks

**Too many weekend guests?!
 Planning a wedding
 or a party?
 We can accommodate you.**

www.oldhallcottages.net
 e: oldhall@glensidehouse.co.uk
 T: 01360 440136

Killearn Football Club

49 Club Members

- | | |
|------------------|-------------------|
| 1. I. McKeich | 26. S. Crawford |
| 2. An. MacColl | 27. Al. MacColl |
| 3. A. Campbell | 28. Ar. MacColl |
| 4. M. Caldwell | 29. C. Banks |
| 5. J. Irvine | 30. M. Rennie |
| 6. N. Brown | 31. G. Campbell |
| 7. D. Corcorran | 32. J.D. Smith |
| 8. T. Kearney | 33. J. MacDonald |
| 9. B. Adams | 34. G. Denton |
| 10. J. MacColl | 35. A. Banks |
| 11. R. Beaton | 36. B. Ballantyne |
| 12. R. Phillips | 37. C. Anderson |
| 13. H. Russell | 38. J. Stephenson |
| 14. M. Duncan | 39. M. Brownlee |
| 15. A. More | 40. A. Young |
| 16. P. Gibb | 41. J. Beaton |
| 17. O. Beaton | 42. D. Gourlay |
| 18. F. McArthur | 43. H. McArthur |
| 19. I. Cameron | 44. S. Sweeney |
| 20. J. Baikie | 45. J. Gault |
| 21. P. Carey | 46. A. Denton |
| 22. J. McLaren | 47. B. More |
| 23. L. McLean | 48. S. McGuffie |
| 24. G. Robertson | 49. E. McKay |
| 25. N. Smith | |

Killearn Football Club

Presentation Evening

At the end of the 2012 season players and Committee, together with several Honorary Presidents, held a presentation evening in the Black Bull Hotel where – after a rather disappointing season – the only silverware on show was the Garvie Cup. This is presented by the Association annually for the best disciplined team from all fixtures played during the season, and is the Club's third winning of the trophy since it was introduced to the League in season 1976.

After a first-class meal from the hotel, Honorary President Hugh McArthur presented the Club's four trophies – John MacColl Shield (Young Player of the Year) to Euan Michie; Barclay Shield (Top Goal Scorer) to Alan More; Riverways Shield (Players' Player of the Year) and the James Gladstone Cup (Club Player of the Year) both Awarded to Fraser Cameron.

After the presentation the Club Chairman thanked all the players and Committee for their efforts during the past season and hoped all would be fit and raring to go in April 2013. As reported below, the Club have taken significant steps towards establishing changing facilities in the Park and would like to thank all supporters and others for their backing.

For further information about Killearn Football Club:
please contact Donald Beaton (550679).

Sports Pavilion

Killearn Football Club, under the auspices of Killearn Community Futures Company, has at long last been given both planning approval and building warrant approval to erect a pavilion.

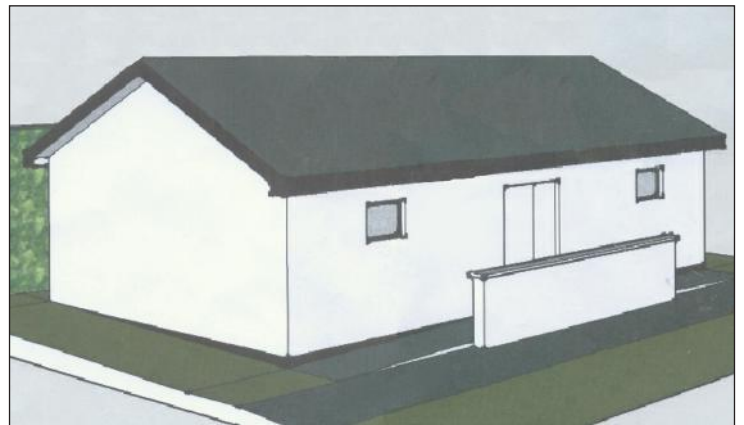
It will be sited in the park between the swings and the enclosed playpark area, requiring the seesaw and a number of small trees to be re-sited.

The pavilion will comprise two changing rooms, a referee's room, showers and toilets.

We are awaiting quotes, after which we can finalise our business plan and start to fundraise. The football club has already raised £8,000, received £4,000 from a local trust, and had expressions of support from two other local trusts. Building start will depend on raising the funds but we are hopeful of completing the project this year. We would be most grateful for any expressions of financial support. The Club have organised a weekly lottery – the 49 Club (*see above*) – limited to 49 members which will raise £2,300 annually to cover running costs, repairs and maintenance.

This will be of great benefit to both local and visiting teams and it is hoped that this will encourage more sports organisations to use the park and the new facility. The more people who use the facility, the easier it will be to obtain funding, so anyone interested in using the facility on a regular basis should contact me.

*Donald Beaton, Chairman,
Killearn Football Club*



An Artist's Impression of the New Building

The Chimney Sweep (BSIT)



- ✓ Chimneys swept
- ✓ No mess
- ✓ Problems solved
- ✓ Nests removed
- ✓ Fully trained
- ✓ Certificates issued



SOLIFTEC MEMBER
THE SOLID FUEL TECHNOLOGY INSTITUTE

60 Kildonan Drive, Helensburgh

www.cleanyerlum.co.uk

CALL T: 0800 158 3818 M: 07805 453369

Douglas Davies 1927–2013



Douglas Davies, who died on 26 January 2013, was born on 13 November 1927 in Ebbw Vale, Monmouthshire. He was the quintessential Welshman, with a passion for the landscape, the poetry and the music of his native land. His teaching in residential schools began when he worked for the Methodist Church in Penarth, near Cardiff, and

although a career move to Scotland did not diminish his love for Wales, it did allow him to develop a strong affection for Scotland. However, his greatest love was for his wife Joan and their four sons, Gareth, Hugh, Clive and Owen. He was immensely proud of his sons' achievements and he derived great happiness from seeing them settled with their own families.

Douglas worked for over twenty years for the Church of Scotland, initially as headmaster at Langlands Park School for Girls in Port Glasgow and later, until his retirement, becoming headmaster at Ballikinrain School. Whenever he spoke about the boys in his care it was clear that he knew of the troubled background many of them had experienced and that he believed he had an opportunity to bring some stability into their lives. For this difficult task he was well equipped with patience and with consistently firm but fair standards.

The Rotary Club was an organisation which he supported with great enthusiasm, becoming President of the Strathendrick Club and District Governor of District 23. He was a popular founder member of the Strathendrick Speakers Club and he served as an elder of Killearn Kirk.

He loved to play golf; he was a member of Buchanan Castle Golf Club for many years and when the weather made golf impossible he played bridge. He was an excellent cook – creative and innovative (though rather untidy). He was fiercely proud of both Scottish and Welsh rugby teams (depending on who was playing).

His friends and colleagues will remember Douglas as a dignified, extremely thoughtful and generous man with a charming manner. He will be greatly missed.

CB

Irving Cole 1922–2012

Irving was born in Belfast, the youngest of four children. His early childhood was spent in Carrickfergus and Portrush, before the family moved back to Belfast when Irving was in his early teens. He was educated at the Methodist College and Queen's College, Belfast, graduating in physics in 1942. He spent the last three war years with the Army Operational Research Group at Roehampton.



After the war he moved north to Glasgow University to take up a post as assistant lecturer, where he stayed for five years, before returning to the Atomic Energy Research Establishment. It was then, whilst staying in digs, that he met Jean, who was a veterinary student at the Royal Vet College. By the time they married in 1955, he had moved back to Glasgow to become a lecturer at the Royal Technical College, later Strathclyde University, where he remained for the rest of his career. A very patient, courteous and approachable man, he was a born teacher, and after his

retirement he continued to coach locally in maths and physics.

In 1962, Irving and Jean moved to Killearn to raise their young family, Sarah and Tim. Irving loved Killearn and joined in village life, serving on the PTA of Balfron High School and the committees of Abbeyfield, Killearn Community Council and Killearn Cottagers' Horticultural Society.

One of Irving's and Jean's abiding passions was for bridge, and they were active and successful members of the Killearn, Strathendrick, and Drymen Bridge Clubs for many years, with

Irving being a past president of Drymen Bridge Club.

Irving was an avid reader with a great interest in books and it was this that led to an arrangement with the Women's Guild whereby for the best part of 35 years, he ran the bookstall at their annual Sale of Work. During this time, not only Jean, but also his daughter, Sarah, and eventually his son-in-law, Eric, and his grandchildren, Anna and Jamie, all played their part

in running the stall.

Irving and Jean were keen dog owners all their married life, and Irving was a well-kent figure, often to be seen wearing his red woolly hat and walking his dogs in the Glen and the surrounding fields.

It was therefore a great sadness when he was no longer able to walk Pippa, his dog, and when failing eyesight made bridge and reading increasingly difficult, deprivations he bore stoically. Irving was a true gentleman and is greatly missed by all his family.

SD

Helen Loudon 1936–2013

Helen Loudon died unexpectedly at the beginning of February. She was one of an established Killearn family, widely known and greatly respected and was, in many ways, a part of Killearn's history. Born in Auchenibert, then the home of her grandmother, she was the eldest of the Cormack family and was brought up in the family home, Dunkyan. She was educated at St. Hilda's School, Balfron (now Ballikinrain) and then at St. Leonard's, and later at the 'Dough' School in Glasgow, where she learned cookery and household management.



Her early years were marked by a love of sports: hockey, tennis and, in particular, riding. The family kept a number of horses and ponies and Helen became a keen rider. She worked for a time at Crieff Hydro stables and then became a House Mistress at Seymour Lodge girls' school and took her horse with her, to ride after working hours. For a time she ran her own riding school in Drumbeg Loan. It was through an accident to her horse that a romance blossomed between her and the vet, Bishop Loudon.

Helen and Bishop were married in 1959; they lived first at Endrickhill, Station Road and here their three sons, Alex, John and Douglas spent their early years before the family moved to The Quinloch in 1971. Together Helen and Bishop made many improvements and created a comfortable home and thriving farm, providing generous hospitality to family and friends and to those who came to assist on the farm. In time they became proud grandparents to their two grandsons, Jack and Stuart.

Always gregarious, Helen was also an excellent organiser and took an active and, frequently, a leading role in many village organisations. She took a keen interest in the life of the village and, following in the footsteps of her mother

(Betty Garland), the co-author of the first Killearn Book, she played a leading role in the setting up of AKA – the All Killearn Archive – collecting and recording historical features of village life, under the auspices of Killearn Community Futures Company. She and Bishop regularly attended the meetings of Killearn Community Council and made valuable contributions to matters under discussion. The George Buchanan Quincentennial Celebrations in 2006, lasting over several days, was one of Helen's feats of planning and organisation, enjoyed by the whole village and the many visitors who came to mark the anniversary of Killearn's

most famous son. Last summer, she organised the Killearn Kirk Flower Festival, with a walk around some outstanding gardens and a magnificent display of flower arrangements, augmented by exhibits from the Flower Show, in the church.

Almost every village organisation and club has, at some time, borne Helen's imprint: the church where she served as an elder for many years and was also in the choir during its early days, the Guild, the Monday Club, the Thursday Club, the Tennis Club, the Strathendrick Curling Club and West Stirlingshire Ladies Curling Club. In most of the activities of Killearn, Helen has been a member, been on the committee, organised the social events, baked, served, set up and cleared away, arranged flowers, been a driver (literally and figuratively) and just been there. With her upright carriage, and distinctive voice, her infectious laughter spilling through the conversations, her seemingly boundless energy, ideas and enthusiasm, she has been the embodiment of the warmth and vitality of the village.

The news of her sudden death was hard to believe and came as a blow to all who had known her. She will be sorely missed in Killearn.

BP

Angus William Macdonald 1925–2013



Killearn has lost one of its best known and well respected residents with the death of Angus Macdonald of Buchanan Road. Angus was born at the waterworks in Milngavie, where his father was a stonemason. He was to remain closely connected to water all his life as a plumber to trade and worked for over thirty-five years for the Glasgow Water Corporation and

then with the Water Board, rising to the post of chief inspector. He was widely respected for his skill and dedication to his work.

He was married to Hilda in Killearn Kirk in 1955. Their long and happy marriage was blessed by the birth of a son and two daughters, and later by seven grandchildren. Angus was very proud of his family, of their closeness and their various achievements.

A man of unassuming but firm faith, Angus gave devoted service to Killearn Kirk where he served as Church Officer for twenty-one years, attending to the opening and closing, cleaning, maintenance and presentation of the building which required an almost daily attendance.

When work was over, Angus enjoyed indoor and outdoor bowling, and was

a keen supporter of Killearn Football Club of which he was a past chairman. Also an earnest supporter of Glasgow Rangers F.C., he deplored the recent turn of events with that club.

Initiated as a Freemason at Lodge Ellangowan in Milngavie in 1947, Angus was respected for his high principles and wise counsel, and for the friendship and encouragement he gave to others. His service to his lodge was described as unparalleled and he was given the title of The Most Ancient in recognition of the length of his service, although not necessarily of his age.

Many have described him as a true gentleman; he will long be remembered, respected and admired for his quiet dignity, his integrity and the courtesy he showed to all who came in contact with him.

BP

Robert Passway 1925–2012



Robert knew Helen from his teens and they married on 4 September 1947 in Finnieston Church Glasgow. A royal wedding also took place that year, and as a result they were able to attend the Golden Wedding Garden Party at Buckingham Palace in 1997. In September they celebrated 65 years of marriage. They set up home in the West End of Glasgow. Two daughters came along, followed in time by three grandchildren and three great-grandchildren.

Robert and Helen moved to Killearn in 1969 and Robert immediately became involved in the Kirk Session in Killearn Kirk. He held the position of Halls Convenor for many years, and in 2000 he was presented with a long-service certificate to commemorate 46 years as a church Elder, a position he sadly resigned in 2003, when his hearing difficulties made it impossible to continue. He was also a member of the Probus Club.

Robert Passway was born in Glasgow, the eldest of five children. He was educated at Woodside Senior Secondary School and graduated from Glasgow University and the Royal Technical College with degrees in Mechanical Engineering. He then served as an officer in the Royal Navy until the end of World War II.

On return from the Navy, he found employment with J&P Coats, thread manufacturers. As Chief Engineer, he had the opportunity to travel to all five continents as part of his work. He took early retirement from Coats and worked for a spell with the Scottish Development Agency in Hillington.

Robert enjoyed the outdoors and besides gardening, he loved walking and playing golf at Strathendrick and, latterly, Ross Priory.

Among family and friends was where Robert was happiest. Always a genial host, cheerful and with a genuine interest in people, Robert will be remembered as a hardworking, warm and caring person.

LJB

Sidney Parrott 1911–2012

Sidney Parrott, resident of Abbeyfield, Killearn, for over eleven years, reached the end of his long life on 9 December 2012. During his time in Abbeyfield, he made many friends in the house and the neighbourhood and was greatly respected for his sociable nature, his great knowledge of all things sporting, and his considerable ability as a bridge player.

Sidney came originally from the south-west of England, being born in Bristol; he lived with his wife, Vera, in Aylesbury, working for many years for the National Farmers Union.

During World War II he served in the Royal Air Force. After the war, he qualified with the Chartered Insurance Institute, later running his own insurance business with his wife. A son and a daughter were born of the marriage. He and Vera retired in 1973 to Cornwall where they spent many happy years and celebrated 64 years of marriage. His family comprising his two children and four grandchildren (and ultimately five great-grandchildren and one great-great-grandchild) were frequent visitors to their home. It was following the death of his wife that Sidney moved to Abbeyfield, Killearn,



in one and continued playing into his nineties. He played bridge with considerable success even longer and was made an honorary member of Drymen Bridge Club. Towards the end of his life, watching sport on television was his great pleasure and he could converse knowledgeably with anyone on any sporting subject.

A gentleman of traditional values and courteous manner – he could be relied upon to give, unprompted, a gracious vote of thanks to the providers of any social activities to Abbeyfield – he will be missed in the house and in the community. *BP*

Jean Pairman 1951–2013



Jean worked at Killearn Primary School as secretary for over twenty years, serving five headteachers and seeing great changes, both in working methods and in the physical environment with the refurbishment of the school building. Her long experience of the school and pupils was of valued support to the staff within the Primary School and the Nursery; she will be greatly missed. Many expressions of sympathy have been received by the school and a new trophy has been introduced in her memory. To be named the Mrs. Jean Pairman Award, this will be awarded annually to the winner of the Killearn Primary School Burns Competition. Jean leaves a son, Niall, and a daughter, Carrie, of whom she was immensely proud. They led the tributes to her at packed funeral service.

in order to be closer to his daughter Linda Astley-Jones and her husband William, former residents of Killearn and now of Balfron.

Throughout his life Sidney was a great sportsman. He was captain of rugby and cricket at school and continued to play cricket up to the age of 50. When he took up golf, he had three holes

Tillie (Matilda) Gourley 1917–2013

Tillie, who lived for 25 years in Graham Road, was born in Springburn to William, an engineer, and Mary, one of seven children of Irish extraction. She was educated at Albert Senior Secondary School, and worked initially in the retail trade. She met and married Bobby, also from Northern Ireland, in 1942. He had come to Scotland looking for work and was also part of a very large family. From an early age, she had a strong Christian conviction, attending the Hillkirk Place Gospel Hall and subsequently St George's Tron Parish Church in Buchanan Street, Glasgow, for 31 years, where both she and Bobby worked in many different roles. They lived off Paisley Road West for 32 years and came to Killearn in the early 1980s to join their only son, Jim and wife, Laraine, who lived on Beech Drive.

Tillie was a well-known figure in the life of the village, often seen with her friends Nina Brown and the late Flora Reid having a chat or at the gates of the church watching newly married couples. They joined Killearn Kirk and she rapidly became involved with many activities, particularly among the ladies and the children.



She was impeccably house proud, and she and Bobby provided a welcome to all comers: school friends of their grandchildren Linda and Alan (who tragically died at the age of 23); looking after the children while one of the house Bible groups met and generally loving nothing better than a visit, a cup of tea and a chat with any and all.

She lost Bobby seventeen years ago, and continued in Graham Road until five years ago when frailty led to her moving to progressively more dependent care at Mill Haven, Clydebank, and latterly at

Buchanan Lodge Care Home, Bearsden.

Tillie's faith was the central core of her life and she would share this in her own gentle way with many. At her thanksgiving service in Killearn, we reflected that at times she might not have had a great deal in worldly terms, but what she was – fiercely proud of her family and a friend to everyone – was the result of her saintliness. Incomer – yes, but typical of those many at the core of our village community who contribute so much to enrich the lives of everyone.

Dr Andrew Weir

James Gemmell 1927–2013



James Gemmell, who died early in January, was born in Dennistoun, one of four children. He was educated at Whitehill School and maintained a close link with his old school for many years. He had a great love of sport, in particular, swimming and football, and played for Scottish Schoolboys at Hampden. On leaving school, James did his National Service in Malaysia and then studied civil engineering at Glasgow Technical College.

In 1956 he married Sheila, their family being completed by the birth of their daughter, Joyce. Soon after this the family set off an adventurous posting to the Fiji Islands, where James was involved in the construction of roads and bridges. Returning to Scotland in 1960, he joined Babbie, Shaw & Morton, remaining with them for some years before setting up his own company, Gemmell, Hammond & Partners in 1970. Work took him frequently to the Middle East and on one trip he escaped an incident which could have had catastrophic effects, when the taxi in which he was travelling through the desert to Riyadh overturned, killing the driver. Jimmy was able to clamber out of the wreckage with a damaged shoulder and scramble back on to the road where he soon flagged down a jeep driven by an American, who took him to hospital and from where he was able to avoid any possibility of being unjustly accused of any responsibility for the accident. (Not an unknown occurrence!)

The family came to Killearn in 1961 and quickly became involved in village life. James was an Elder of Killearn Kirk and was responsible for the building of the session house; Sheila taught at the primary school. James's love of sport found its outlet in golf at Strathendrick, where he was sometime captain, curling, pheasant shooting and fishing.

The marriage of his daughter and the joy of the birth of a first grandchild were too soon followed by the sorrow of Sheila's early death. James continued to live in Branziert Road, maintaining his pride in his family, into which a second grandchild was born, and continuing to attend pheasant shoots at The Quinloch, where, more recently, he assisted by taking on the responsibility for organising the shoot lunch. He took pleasure in frequent visits to Arran, where he had a house and where he also took part in shoots. In later years he enjoyed the companionship of his friend, Sheila McEwan of Callander.

He will be missed as a long-standing resident of the village, often to be seen early on a Saturday morning, clad in his tweeds, setting off for a shoot with a twinkle in his eye.

BP

Following Jimmy's funeral, donations to Christian Aid totalling £311.60 were received. Joyce and family wish to express their gratitude for the generosity of friends in supporting this charity which had been close to the hearts of both Jimmy and Sheila.

Jamie Pearson
Independent Funeral Directors

Fintry Manse, Kippen Road, Fintry

01360 860 345

also at 2 Service Street, Lennoxton & 54 Cowgate, Kirkintilloch



Woodland Burial

Golden Charter
Funeral Plans

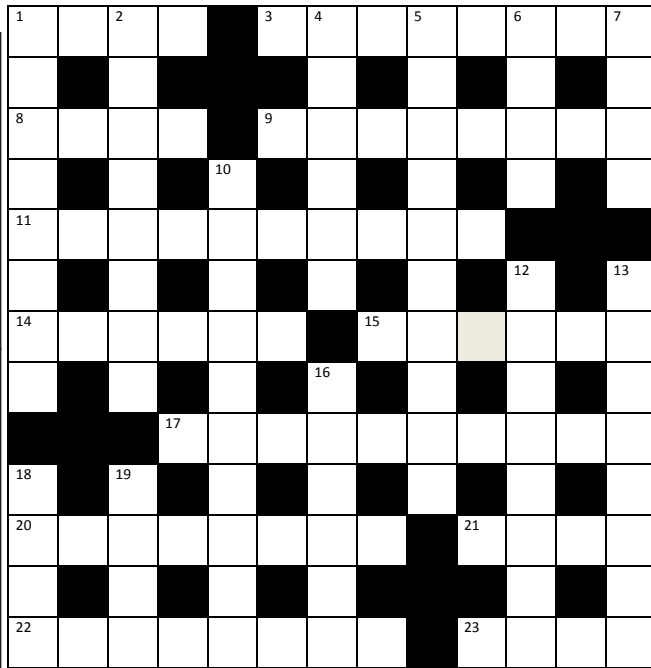
Solve the crossword, fill in your name and address, and place it in the box in Spar.

The first correct entry to the crossword drawn out of the box after the closing date will win a Family Ticket to Theatre Royal or The King's Theatre, Glasgow, subject to availability and restrictions on certain days.

Welcome to King's Theatre and Theatre Royal, Glasgow

The King's Theatre and the Theatre Royal are Scotland's leading live entertainment venues, showcasing the best West End and touring productions in the UK each and every year.

telephone: 0844 871 7627.
ambassadortickets.com/glasgow



ACROSS

- 1. Boy servant in a book. (4)
- 3. Walking good man in front of forest. (8)
- 8. Law of thumb. (4)
- 9. Will maker test a tortoise. (8)
- 11. Here in bed – not understandable. (10)
- 14. See 7.
- 15. Exercises - tips us around?(6)
- 17, 18d. Legal haven will be around for us. (3,7,4)
- 20. Hold off – Lincoln, an American, loses his last for a religion. (8)
- 21. New 19. (4)
- 22. Words free French race ends with nothing. (8)
- 23. Duty we will pay. (4)

Solution to the last crossword Across: 1 pubs; 3 age; 5 gnat; 9 star; 10 coquette; 11 mistletoe; 15 reigns; 16 midair; 18 mince pies; 21 fireside; 22 sign; 23 riot; 24 ash; 25 eyas. Down: 1 postmark; 2 bearskin; 4 grotto; 6 nuts; 7 tree; 8 yuletide; 12 landmass; 13 nativity; 14 presents; 17 anodes; 19 afar; 20 trio.

DOWN

- 1. Breakfast in prison. (8)
- 2. State acid could refer to milky way say. (8)
- 4. Supposition puts his name on the line. (6)
- 5. Powerful and unwell, a plant.(10)
- 6. An extremely small letter. (4)
- 7,14. Glues rigid organisation. (4,6)
- 10. Sweet cheddar gateau. (10)
- 12. French comedian in particle is changed. (8)
- 13. The finest in fashion is deadly. (8)
- 16. Bird has heartless voice in art, not right. (6)
- 18. See 17.
- 19. Hereby loses the old culinary plant. (4)

Name

Address

.....

Phone

Congratulations to the winner of our last crossword: Katy Frew, Killearn

CHILDREN'S SPOT THE DIFFERENCE sponsored by SPAR

The first correct entry pulled out of the box will win a £10 voucher which may be spent on anything in your local SPAR.

Find 10 differences in the picture on the right and ring them. Write your name, address and age below, cut out the pictures and place in the box in Spar to win a £10 voucher. To enter the competition you must be 12 years or under.



Name Age

Address Phone No.

Congratulations to the winner of the £10 Spar voucher in our last competition: Rebecca Rennie, age 7

Closing Date for both competitions – 30 March 2013. Please place your entries in the box in Spar.

If You Go Down to The Woods Today...

One cold crisp morning in mid January, I visited Kirkhouse Wood to discover what the area held in terms of wildlife in the dead of winter. In particular, I was interested in whether there was much in the way of bird life – and I was not to be disappointed.

Despite the leafless state of the many deciduous trees, there was still substantial greenery within the wood – a mixture of grasses, ferns, holly bushes and moss-clad tree trunks contrasting with the otherwise brown and faded undergrowth. And amongst it all, wonderful hoof-shaped Tinder Fungi welded themselves on to decaying birch trees.

Quickly encountering mixed roving flocks of small songbirds, I was able to watch them at close quarters, zipping from one tree to another as part of well-established feeding circuits. Good numbers of chaffinches, greenfinches, blue tits and great tits were on show, with the odd goldcrest thrown in for good measure. Redwings stared down at me nervously from the treetops, whilst a common buzzard mewed plaintively and glided across my path. Great spotted



woodpeckers announced their presence too, their agitated ‘kik’ calls echoing through the stillness; their deeply undulating flight another dead giveaway.

But if this is what it’s like in winter, just wait until spring. A visit in April or May should see a much transformed wood. Not just in terms of greenery, but also in terms of sound, as our resident bird species will be joined by songsters from Southern Europe and Africa. Listen out for

chiffchaffs, willow warblers and blackcaps – all common enough (in fact, any woodland area around Killearn will entice these summer visitors), but it’s always great to know that they’ve made it back. I have also seen and heard redstarts in our woodlands – a male in spring has to be one of our most attractive species.

So get out there, binoculars at the ready. And if you don’t have binoculars, let your ears do the work. Even after the dawn chorus has reached its peak, a fair weather day in this place will remain an aural treat. And it’s all on your doorstep.

Martin Culshaw

100% SCOTTISH BEEF & PROUD!

Now is the time to support your Local Farmer.

and in return we will supply
you with the best produce
Scotland has to offer with
Free Local Delivery every Friday.



EDENMILL
FARM



/EdenmillFarm



@EdenmillFarm

Edenmill Farm, Stockiemuir Road
Blanefield, Glasgow G63 9AX

Tel: 01360 771 707

www.edenmill.co.uk | email: shop@edenmill.co.uk



Lomond School

Every day is an open day



New Lomond School bus service

serving Killearn, Drymen and Gartocharn Please contact the school for details.

Lomond School offers an academic education that will stretch and extend your child to their full potential with a strong extra curricular programme of sport, music, drama and outdoor activity.

We warmly welcome families to see round the school, meet staff and pupils and find out more about the unique opportunities that our pupils from Killearn and surrounding areas are enjoying. Just make an appointment to visit any time.

Financial assistance is available with fee reduction up to 100% from Transitus 2 upwards.

- Small class sizes
- Superb academic results
- Positive caring ethos
- Committed teachers
- Excellent facilities and new Sports Hall
- All through school (nursery to S6)
- Boarding and day places

10 Stafford Street, Helensburgh

T 01436 672 476 www.lomondschool.com

Lomond School is a co-educational HMC Independent School.