



& Safe
Sustainable:

Capability Statement

Tree &
Environmental
Services

2025

Who we are

Our mission

Our Mission is to deliver world-class Arboriculture Consultancy and Tree Management Services, with safety and sustainability at the forefront of everything we do. We aim to develop a long-term viable company that fulfils the needs of its employees and customers.

Efficient production

We drive exceptional outcomes through innovative machinery, smart project management and real-time data systems. Our streamlined operations reduce overheads while delivering faster, lower-risk results at every project stage.



Company overview

Arborcraft Tree Services has provided commercial tree management services for over 12 years. With expertise across natural and built environments, we deliver safe, sustainable, high-quality arboreal care. Our approach prioritises environmental stewardship, with a strong focus on safety at every step. Our highly-trained staff supported by comprehensive safety protocols, detailed procedures and state-of-the-art equipment ensure every job is executed with precision and care. Over the years we have become a trusted, all-in-one provider to some of the most iconic projects across Australia. Our services range from tree maintenance, removals and transplanting, through to environmental reporting and habitat creation, all of which are provided with one clear goal - to deliver quality tree care from the ground up.

Our expertise

At Arborcraft, we are committed to employing the best people for the job. All of our arborists are fully qualified and selected through a rigorous hiring process. We provide opportunities for further certification, training, and technical upskilling to ensure the highest standard of tree care.

Our core values

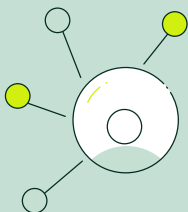


Safety first

We have safety embedded in our roots. From comprehensive HSEQ and OH&S procedures to compliance with Australian AS4373-2007 standards, we ensure maximum protection for our team, clients and assets through streamlined safety systems and thorough risk management.

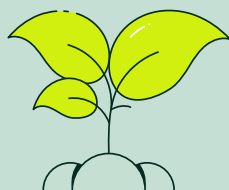
Sustainable, always

We deliver lasting value through three key pillars:



People:

Fostering a high-performance culture that keeps our team motivated and coordinated



Environment:

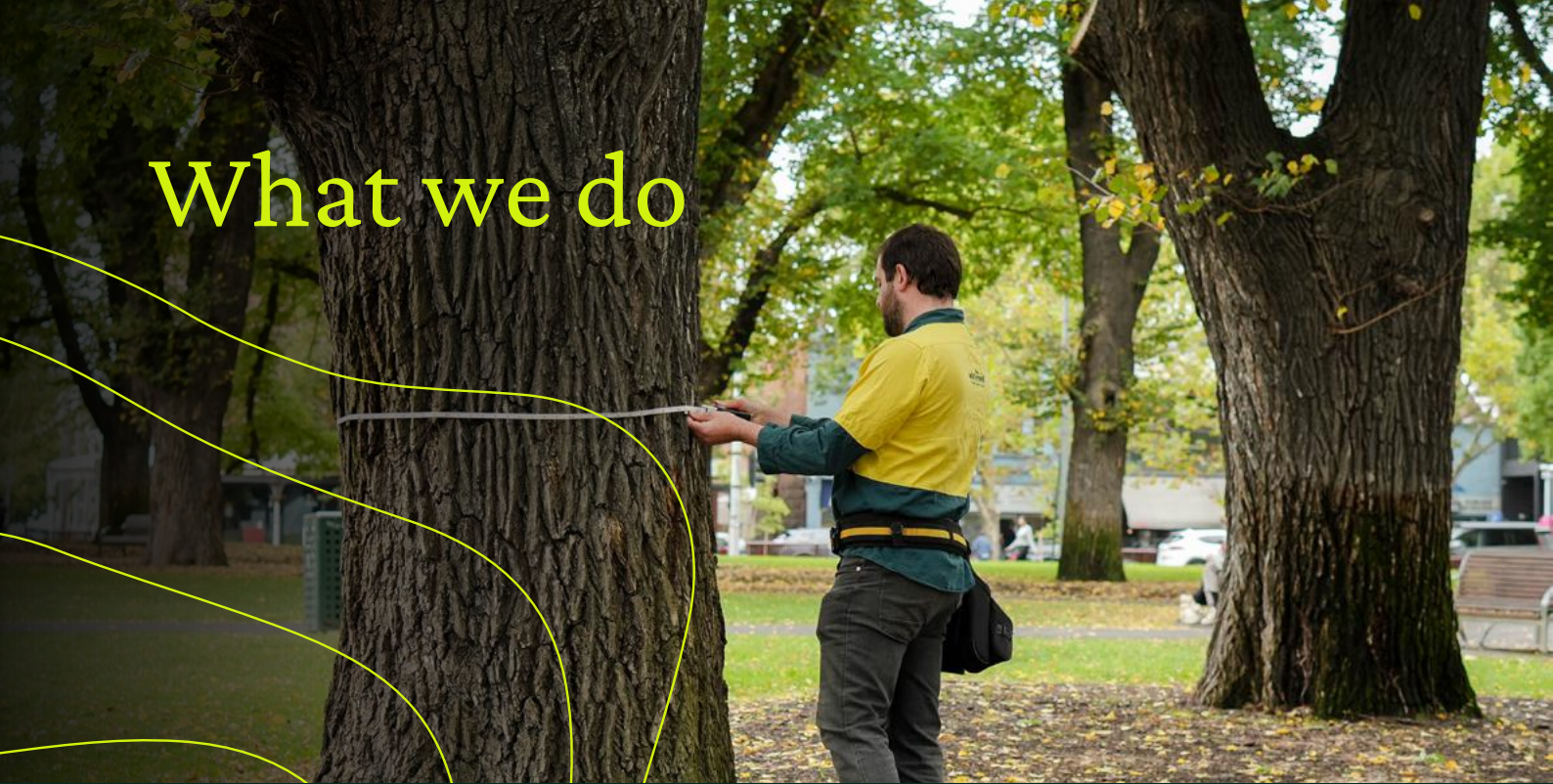
Leading environmental preservation through expert arborist practices and eco-friendly solutions



Business:

Ensuring strong financial governance to protect and maximise your investments.

What we do



How we do it



Industry leading technology

We use industry-leading equipment, including rotating telehandlers, to enhance safety and efficiency on-site. By reducing reliance on elevated work platforms (EWPs) and taking people out of high-risk environments, we significantly lower on-site risks while delivering superior outcomes.



GIS mapping software & data collection

We develop detailed location intelligence for our clients by using Geographic Information System (GIS) software to generate accurate geospatial maps. We then link this data to our custom-built software to uncover valuable project insights.



Integrated management systems

We run a paperless, fully integrated management system that tracks real-time activity across Australia. This lets us report on every aspect of our operations and alert managers to any possible non-compliance with our HSEQ processes.



On-demand fleet

Equipped with a fleet of powerful, precision-engineered machines, we offer specialised and scalable tree care. Unlike others who require large on-foot teams, we complete projects efficiently with a well-equipped crew.

What we do

Tree consulting

Our qualified arborists specialise in large-scale infrastructure projects, delivering comprehensive assessments and documentation that align with major project requirements. We provide detailed analysis for environmental impact statements, construction methodology reports, and risk management plans that keep your project compliant and on schedule.

Strategic vegetation management

We understand the critical nature of vegetation control in infrastructure corridors. Our pruning services ensure overhead clearance requirements are met, and sight lines are maintained, while our precision removal capabilities handle high-risk trees that could impact project assets or timelines. All work is documented and compliant with project specifications.

Environmentally sound solutions

Our woody weed removal services are designed for large infrastructure sites, ensuring healthy trees and environmental compliance while maintaining project momentum. We use the latest tools and equipment to remove unwanted woody weeds while protecting native vegetation.

Transplanting & planting

We make sure we put the right trees in the right place, with transplanting and planting programs that meet infrastructure site requirements. We conduct onsite assessments of the locale, soil type, drainage, and more – considering every part of the tree - from the root network to the canopy.

Tree removal

We specialise in tree removals of any size, using advanced equipment and detailed traffic management plans to work safely and efficiently in even the most confined urban spaces. Our experienced teams work within your project constraints to ensure zero impact on underground services, maintain site safety standards and preserve and transplant trees whenever possible.

Recycling

Committed to sustainability, we recycle all green matter removed from your site to help support your sustainability targets. Our machinery fleet handles bulk material processing and removal, repurposing everything from wood chips to entire trunks without affecting project timelines. We also provide detailed tracking and reporting of recycling outcomes for project documentation.

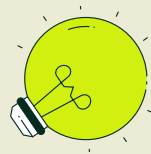


What sets us apart



Safety-first culture

Our streamlined safety systems and ingrained safety culture set new industry standards. Every team member actively contributes to maintaining a zero-harm environment, ensuring reliable project execution through simplified processes that increase engagement and efficiency.



Innovation & technology

We combine cutting-edge technology with deep domain expertise to deliver superior results. Our investment in advanced machinery and specialist training enables faster, safer operations while maintaining the highest quality standards in arboriculture services.



Agile project delivery

With robust back-office support and streamlined systems, we respond swiftly to project changes and challenges. Our efficient handling of documentation and inductions ensures quick project mobilisation and seamless execution.



Environmental leadership

We integrate sustainability into every aspect of our operation, combining strategic consulting with practical execution. Our automated reporting systems make it easy for clients to meet their environmental targets while maintaining project momentum.



Client-focused

Our service-oriented approach solves complete project needs with transparency and adaptability. Backed by over 20 years of experience, we customise solutions to meet your exact requirements, consistently exceeding client expectations through proactive improvement systems.

Case studies

Tullamore Estate/Mirvac



Repurposed from an old golf course, Tullamore Estate is a large, well-forested residential community in Doncaster, Vic.

Pre-planning

After performing a needs assessment, we executed a tailored management plan for the estate and developed a planned rollout of services with the council and client.

Arboriculture consulting

Our expert arborists provided detailed mapping of the area and offered proposals for long-term improvements to the area.

Pruning/removals

Following through on initial assessments, we removed excess vegetation and provided pruning services across the entire estate.

Maintenance

Dissatisfied with their previous provider, Arborcraft was also contracted by Mirvac for the ongoing maintenance of the estate. We have managed all council interaction and tree maintenance since 2019, supplying all garden mulch through recycled green waste.

Habitat creation

This was the biggest outcome for our client and the Tullamore residents: a fully researched, designed, and implemented habitat creation scheme. Working closely with all parties, including the council ecologist, we installed an economically and environmentally viable habitat for sugar gliders, various birds and possums.

As part of Victoria's Big Build, Arborcraft has been contracted to manage the tree removals, pruning, habitat creation and consulting service for the project.

Pre-planning

Working closely with the project Arborcraft developed a strategy to improve efficiency on the project. From tree protections methodologies through to specialised equipment for tree removal the team implemented a tailor-made strategy for the project.

Arboriculture consulting

Arborcraft assessed over 100 acres of trees within the road corridor and on government and private land. Our experts assessed the impacts to the trees against the North-East Link design proposal. Our consultants are regularly involved in supervising construction works and providing advice to mitigate damages to the trees in line with best practice and identify any opportunity for habitat creation.

Pruning/removals


After the initial assessment the team removed excess vegetation and provided tree pruning services across the entire project area. From uplifts to allow machines to enter, dead wooding for tree health and complete removal.

Habitat creation

Working closely with all parties, including our ecologist and the project enviros, we installed economically and environmentally viable habitat for sugar gliders, various birds, and possums.

Recycling/reuse

We repurposed all the mulch to compost and have reused all the timber in milling and landscaping on the project."



Other projects

M80

Arborcraft has been contracted to remove the trees on the M80 ring road extension project as part of the Big Build. Arborcraft has run 24 hours a day for months on the project to ensure that the project doesn't fall behind.

Programmed Facility Management – Victorian School Building Authority

Selected from out of 500 different vendors, Arborcraft was engaged as an emergency service tree care provider as part of Programmed's make-safe program. After attending almost 500 incidents statewide, and without once falling outside of response time KPIs, Arborcraft was awarded Programmed's Vendor of the Quarter, Q2 2021, and continues to provide this service.





512 - 540 Heatherton Road,

Clayton South VIC 3169, Australia

03 9913 5195

info@arborcrafttreeservices.com.au

www.arborcrafttreeservices.com.au