

A three-story brick house with a stone base, dormer windows, and a portico. The house features a dark grey shingled roof with three dormer windows, each with a white arched surround. The main level has two windows with white arched surrounds. The ground floor is finished with grey stone masonry and includes a grey garage door on the left and a portico with white columns and a dark door on the right. A set of stone steps with black metal railings leads to the portico. The house is set against a clear blue sky with some greenery visible on the right side.

42 TRUE DAVIDSON DRIVE

GOVERNOR'S BRIDGE



ELEGANCE IN GOVERNORS BRIDGE

Welcome to 42 True Davidson, a captivating 6-bedroom residence nestled within the highly sought-after community of Governors Bridge. Upon entering, you'll be greeted by a seamless blend of classic elegance and modern sophistication. Soaring ceilings, sleek hardwood floors, and crown moulding create an atmosphere of openness and airiness. The heart of the home is the stunning great room with a wooden fireplace, an ideal space for creating lasting memories with loved ones. Through double doors, the dining room connects seamlessly to the kitchen through the servery, creating an ideal flow for entertaining. The chef-inspired eat-in kitchen is a true culinary dream and ties into the family room with an expansive deck that seamlessly extends your entertaining area.





SEAMLESS LIVING SPACES

The home boasts six generously sized bedrooms, providing ample space for everyone, along with four bathrooms to ensure effortless mornings. The master retreat is a haven of indulgence, complete with an opulent ensuite and two expansive walk-in closets perfect for any wardrobe. The lower level awaits your personal touch - envision a state-of-the-art home gym, a private theatre, or a vibrant playroom. Additional features include a spacious mudroom designed to keep clutter at bay, and a recreation room perfect for play or relaxation.

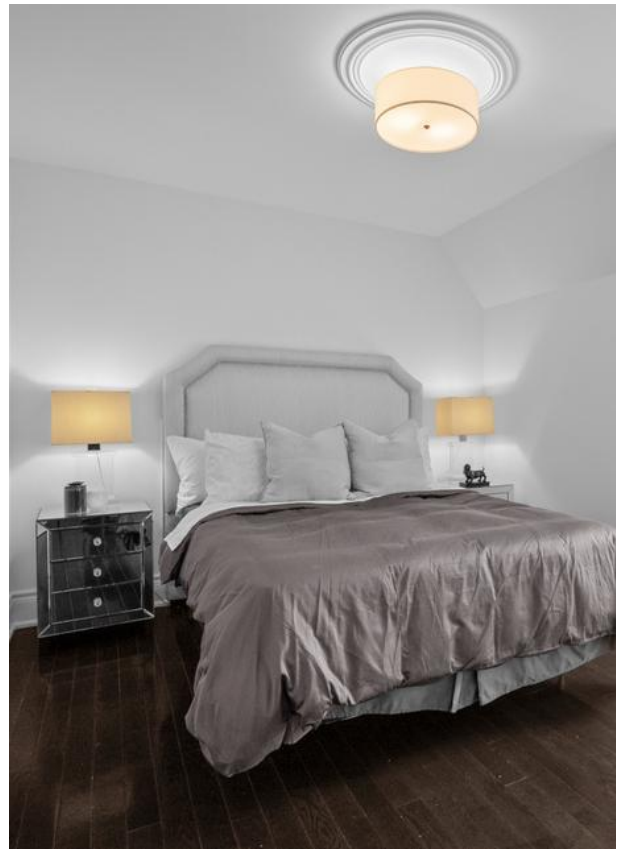
Governors Bridge provides residents with an outstanding quality of life, thanks to its prime location. Enjoy quick commutes to Rosedale and Leaside shopping, the DVP and downtown, along with access to top-ranked public and private schools.















INTERIOR FEATURES

- Six spacious bedrooms
- Four bathrooms for ease and convenience
- Great room with wooden fireplace
- Chef-inspired eat-in kitchen
- Dining room with servery to kitchen
- Family room with deck overlooking the ravine
- Master retreat with opulent ensuite and 2 walk-in closets
- Spacious mudroom connected to the double car built-in garage
- Potential for home gym, theatre, or playroom in lower level

DESIGN AND LAYOUT

- Soaring ceilings
- Sleek hardwood floors
- Crown moulding
- Open and airy atmosphere
- Seamless flow for entertaining

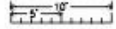
LOCATION

- Prime location in Governors Bridge
- Quick commutes to Rosedale and Leaside shopping
- Easy access to DVP and downtown
- Top-ranked public and private schools nearby

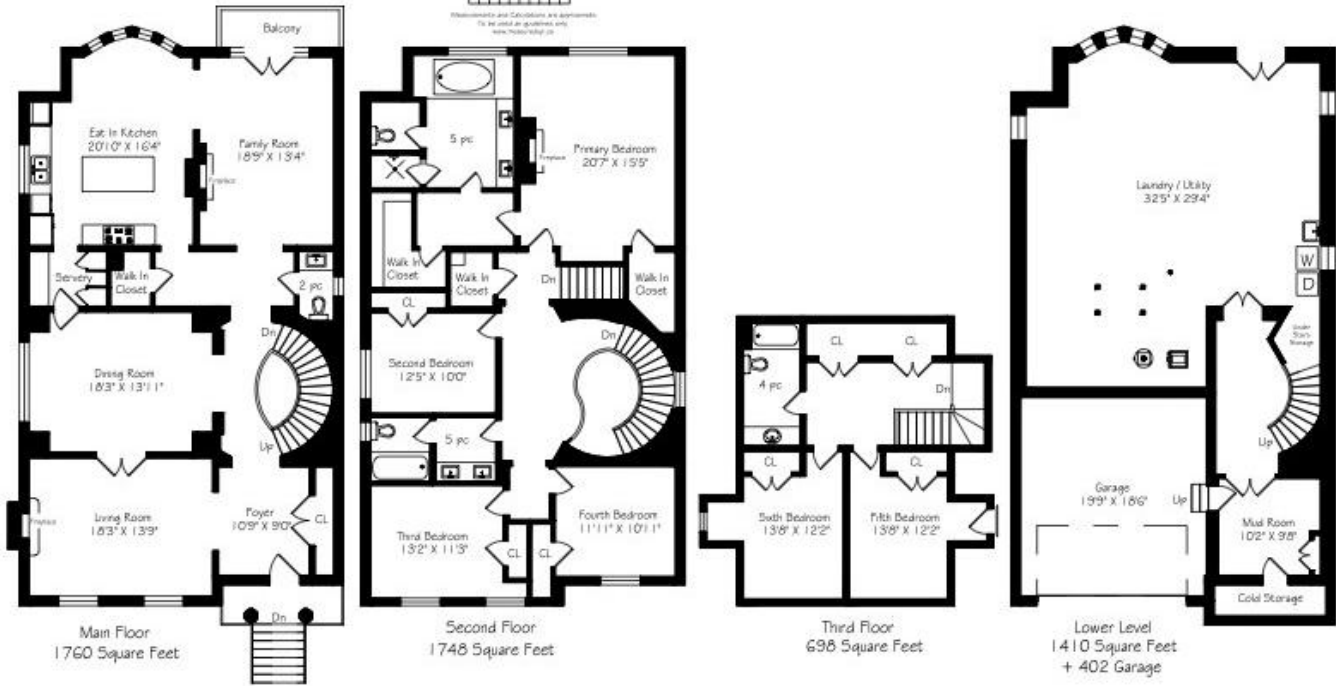
INCLUSIONS

- KitchenAid Refrigerator
- KitchenAid Dishwasher
- KitchenAid Cooktop
- KitchenAid Vent Hood
- KitchenAid Oven
- Whirlpool Washer & Dryer
- All Electrical Light Fixtures

42 True Davidson Drive



Measurements and calculations are approximate.
To be used as guidelines only.
www.houzz.com



COOLING

- Central Air Conditioning

TAXES

- \$18,819.26 (2024)

POSSESSION

- 30-60 Days

INCLUSIONS

- All Light Fixtures
- All Appliances (As-Is Condition)
- All Window Coverings

RENTAL ITEMS

- Hot Water Tank

HEATING

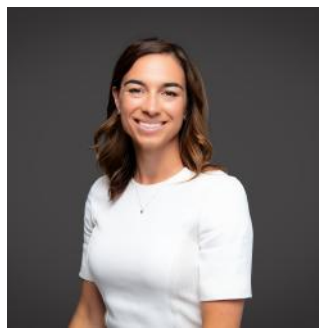
- Forced Air Gas

PARKING

- Private Driveway with Built-In Garage



ELEVATE YOUR EXPECTATIONS



Amanda Gaskey
Real Estate Agent
416.424.4910
amanda@heapsestrin.com



HEAPS ESTRIN

REAL ESTATE TEAM

For Royal LePage Real Estate Services Heaps Estrin Team, Brokerage. All information and statements contained herein, provided by Royal LePage Real Estate Services Heaps Estrin Team, Brokerage regarding property for sale, rental or financing is from sources deemed reliable and assumed correct, but no warranty or representation is made as to the accuracy thereof and same is submitted subject to errors, omissions, changes in price, rental or other conditions, prior sale or withdrawal without notice.

Royal LePage Real Estate Services Heaps Estrin Team, Brokerage Independently Owned and Operated