



FORT VICTORIA

LIVE IN LUXURIOUS COMFORT

Living in Fort Victoria, a standout 3-tower development, will place you at the core of the country's key business offices, commercial establishments, hospitals, schools and universities.

Fort Victoria is located along Millionaire's Row, the most valuable real estate in the country's premier central business district, the Bonifacio Global City.

READY FOR
OCCUPANCY

Artist's Perspective



TABLE OF CONTENTS

1 - 2

Project Profile

11 - 12

Residential Floor Plan

3 - 4

Typical Unit - Floor Plan

13 - 14

Swimming Pool

5 - 6

Typical Unit - Photo

15 - 16

Lobby

7 - 8

Combined Unit - Floor Plan

17 - 18

Map

9 - 10

Combined Unit - Photo





ABOUT THE PROJECT

Fort Victoria – Premium condominium in Bonifacio Global City (BGC)

Ready for occupancy condominium located in Millionaire's Row, Bonifacio Global City's (BGC) most premium area.

Near shopping malls such as Bonifacio High Street, SM Aura Premier, Uptown Mall, Mitsukoshi, Venice Grand Canal Mall, Market Market

Near premier schools such as Chinese International School, International School Manila, University of the Philippines BGC, British School Manila, Manila Japanese School, Korean International School

Near St. Luke's Medical Center BGC, and Sanctuario de San Antonio

Artist's Perspective

Floor Level

Lowest basement level to roof deck level

34 LEVELS



Number of Towers

3



Total Number of Floor Levels

A(34), B&C (32)



PROJECT PROFILE

Project name:

Fort Victoria

Project location:

5th Avenue, Bonifacio Global City, Taguig

Stage:

RFO

Project type:

Vertical

Building type:

Mixed-use commercial and residential

15 Number of Elevators

1 Commercial Levels

11 Number of Parking Levels

1014 Total Number of Residential Units

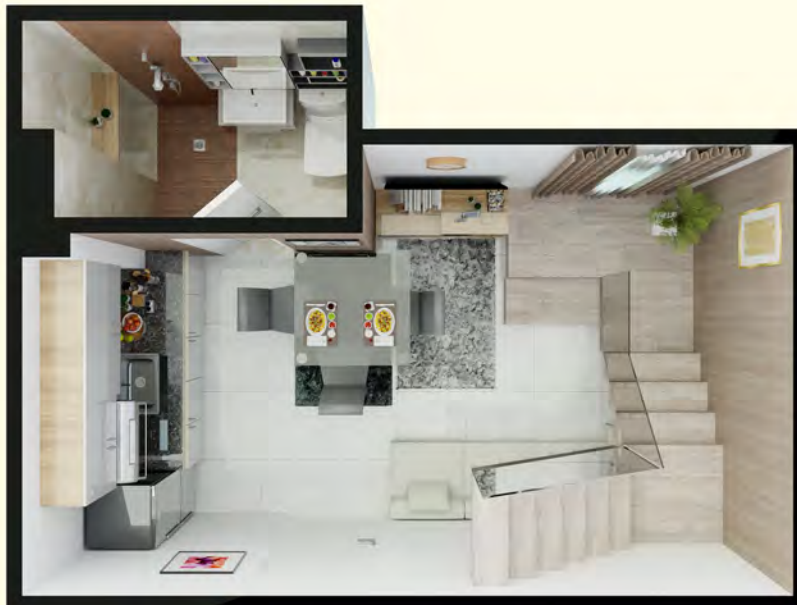


| | |
|-----------------------------------|------------------------------|
| Floor levels at basement : | 5 |
| Floor levels at podium : | 6 |
| Residential levels : | A(22), B&C (20) |
| Residential units : | 1014 |
| Parking levels at podium : | 6 |
| Parking levels at basement : | 5 |
| Commercial Parking : | $87 + (\text{SCO}10) = 105$ |
| Residential Parking : | $825 + (\text{SCO}95) = 912$ |
| Area Of Commercial Space (Sqm) : | 1,509.83 |
| Area Of Residential Space (Sqm) : | 49,762.10 |

Artist's perspective



UPPER LEVEL



LOWER LEVEL

45.62 SQM

APPROXIMATELY

**COMBINED
UNIT**



Artist's perspective



Artist's perspective



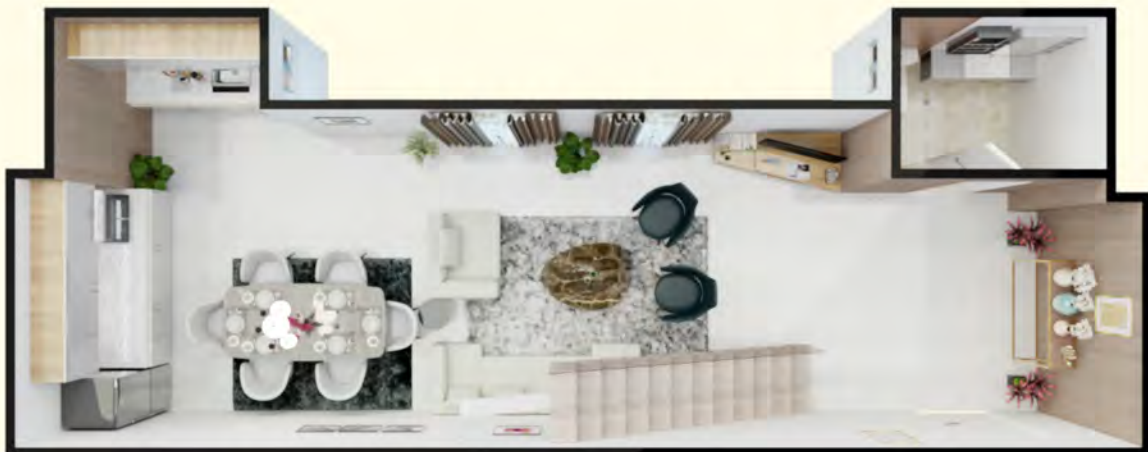
A charming urban loft in the heart of the city. Welcome to this spacious and stylish loft, where contemporary design meets urban living. Nestled in a sought-after neighborhood, this open-concept unit is perfect for those who appreciate both functionality and character.



Artist's perspective



UPPER LEVEL



LOWER LEVEL

91.24 SQM

APPROXIMATELY

**COMBINED
UNIT**



Artist's perspective



Artist's perspective



Discover the perfect space for your family. The combined unit makes the most of every inch designed for those who cherish uniqueness and comfort. Upgrade to a home that is truly you.



RESIDENTIAL FLOOR PLAN

LEGEND

- Typical Units
- Upsized Units
- Elevators
- Hallways / Fire Exits
- Utilities

**RIZAL DRIVE
TOWER B**



**4TH AVENUE
FACING MAKATI & MANILA GOLF CLUB**

5TH AVENUE TOWER C



SWIMMING POOL
AT THE 5TH FLOOR LEVEL



23RD STREET TOWER A

Tower A

6th - 25nd

Main Floor Plan

Towers B & C

6th - 23nd

Main Floor Plan

AMENITIES

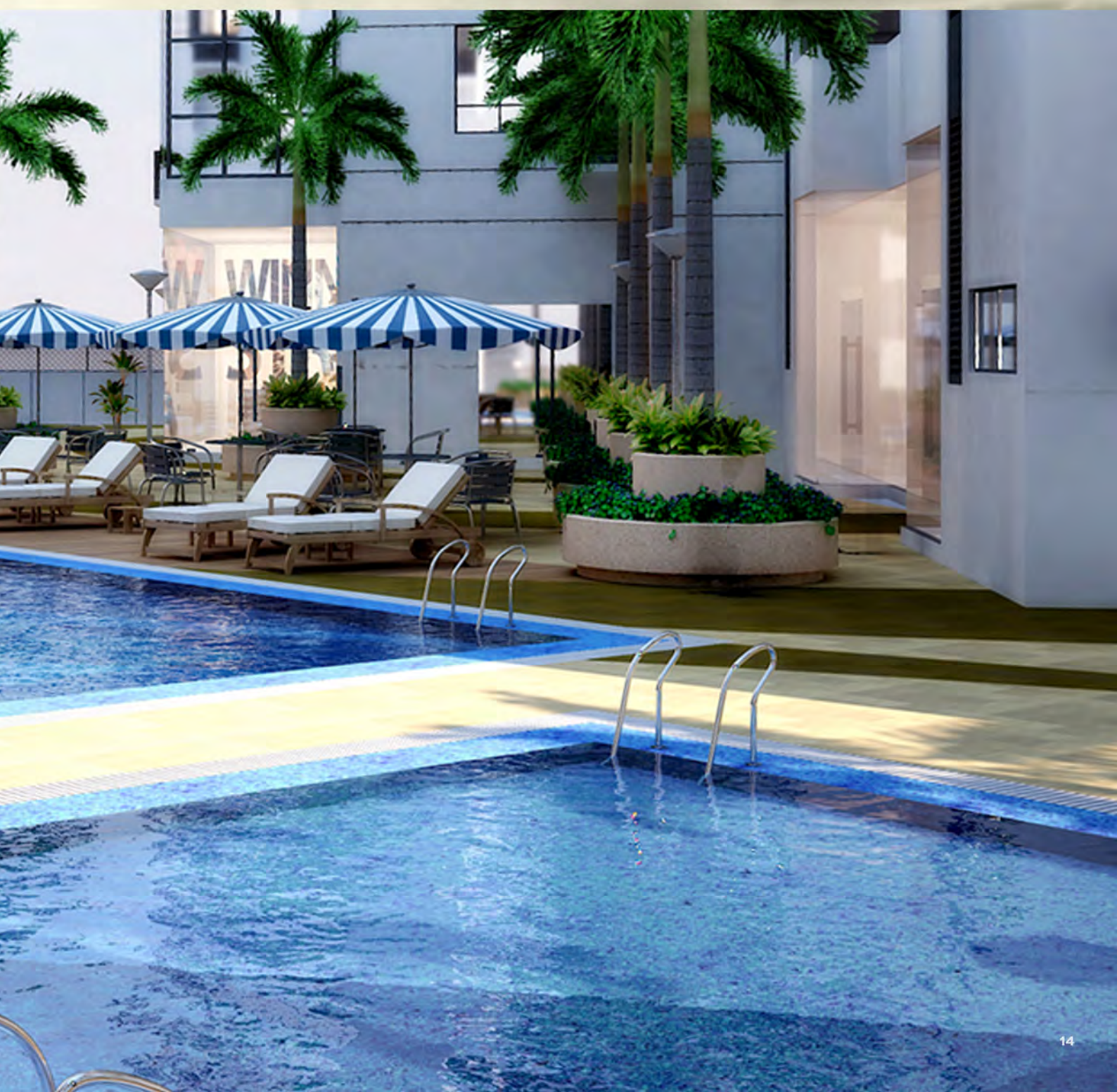
SWIMMING POOL

Imagine lounging by the water with friends, hosting unforgettable pool parties, or enjoying quiet evenings under the stars. With the right ambient lighting, and comfortable seating areas, your pool will be the perfect oasis for leisure and entertainment.

Artist's perspective



RESIDENTIAL

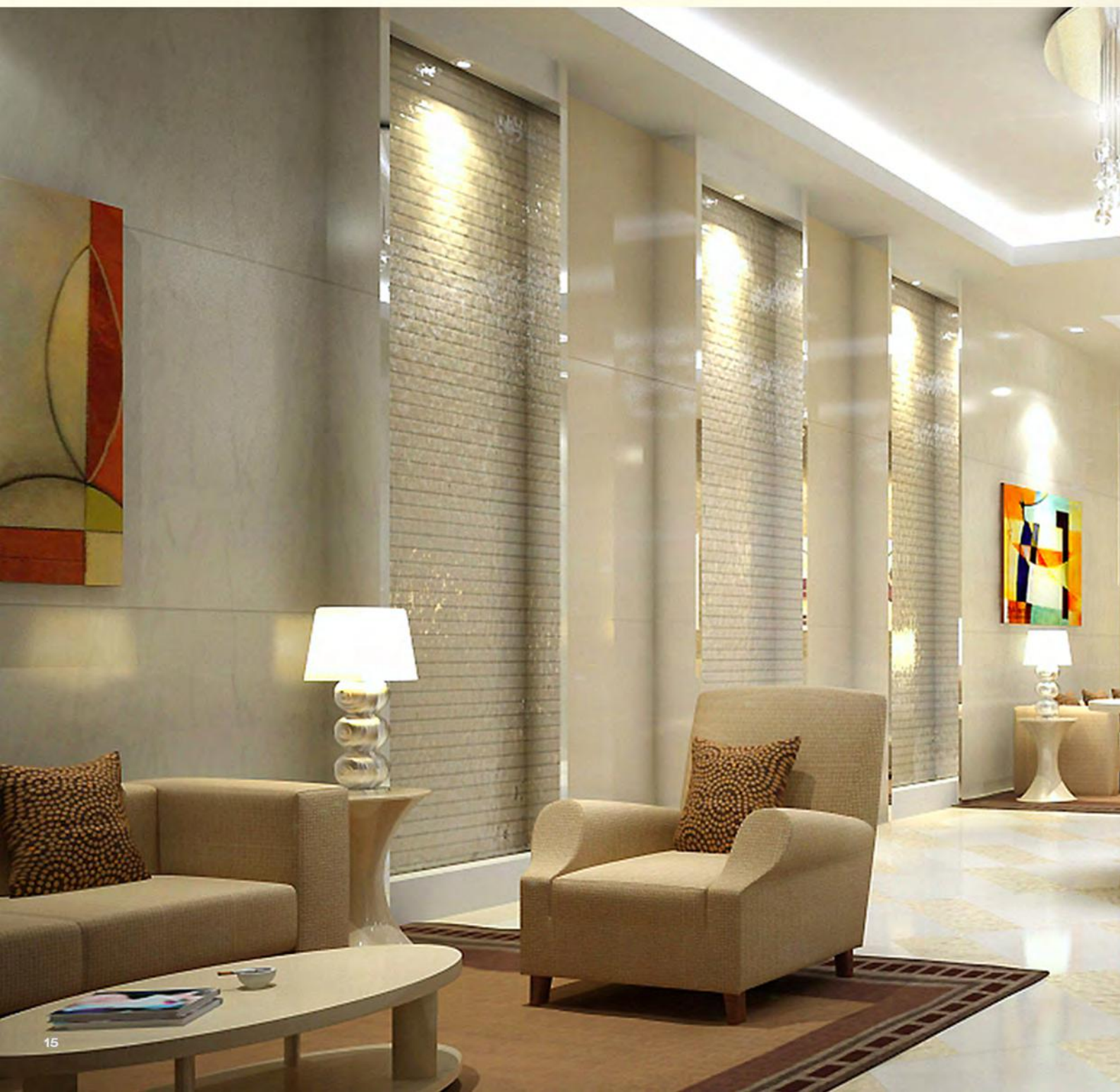


FACILITIES

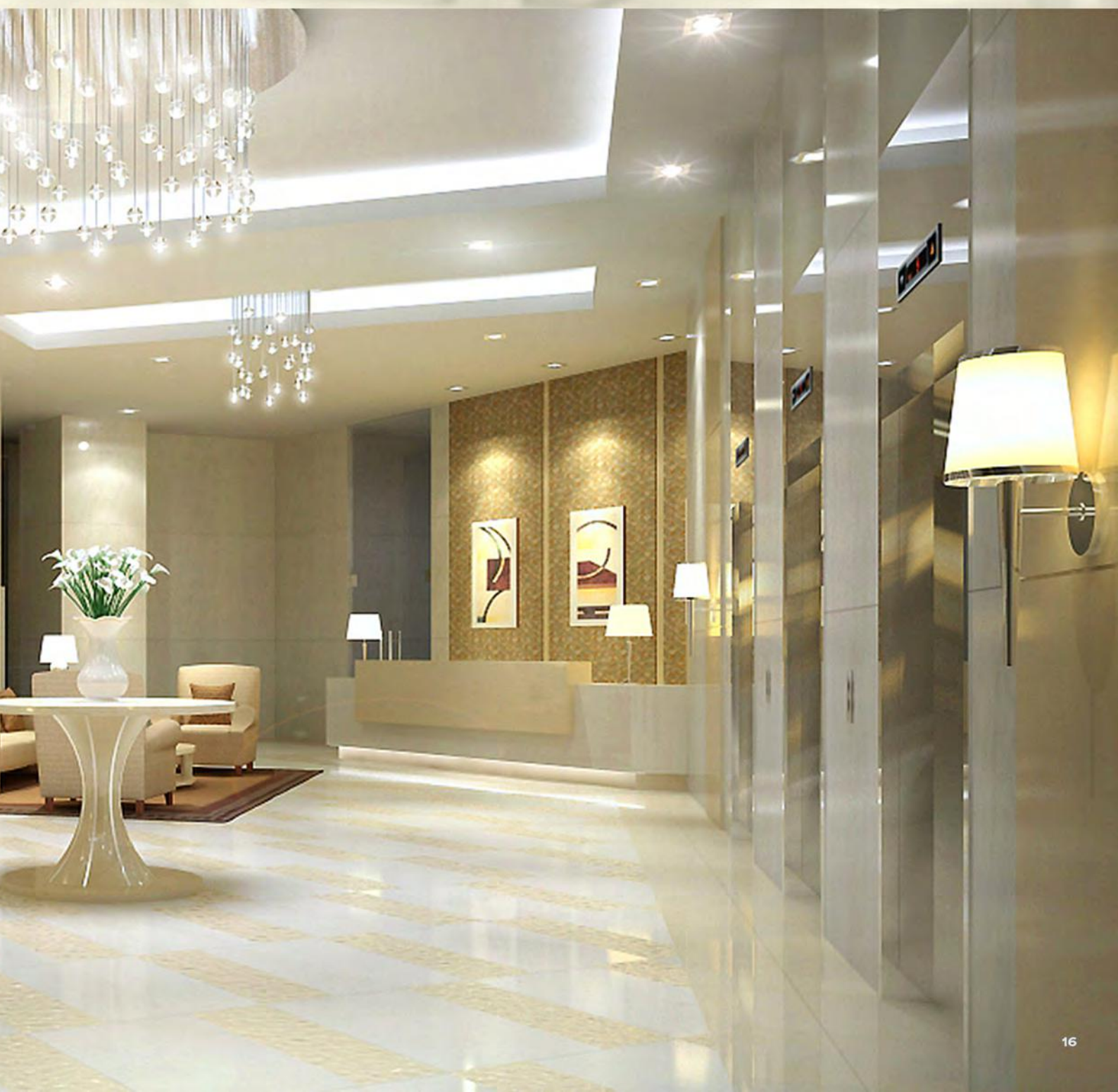
RESIDENTIAL LOBBY

The residential lobby is more than just a space; it's the perfect blend of style, functionality, and community spirit—a true gathering place that embodies the essence of home. Welcome to your new favorite spot!

Artist's perspective



RESIDENTIAL



LOCATION MAP

NEARBY ESTABLISHMENTS



SCHOOLS

| | | |
|---|-----------------------------------|--------|
| 1 | Chinese International School | 1.7 km |
| 2 | International School Manila | 2.1 km |
| 3 | University of the Philippines BGC | 2.2 km |
| 4 | The British School Manila | 2.3 km |
| 5 | Manila Japanese School | 2.4 km |
| 6 | Korean International School | 2.7 km |
| 7 | STI College Global City | 2.9 km |



TRAIN STATION:

| | | |
|---|---------------------|--------|
| 8 | Ayala MRT Station | 2.5 km |
| 9 | Buendia MRT Station | 2.8 km |



GOVERNMENT OFFICES

| | | |
|----|------------------------|--------|
| 10 | Embassy of Singapore | 400 m |
| 11 | Korean Embassy | 2.3 km |
| 12 | British Embassy Manila | 2.6 km |



MALLS

| | | |
|----|-------------------------|--------|
| 13 | Market! Market! | 1.5 km |
| 14 | Bonifacio High Street | 1.7 km |
| 15 | SM Aura Premier | 2.0 km |
| 16 | Uptown Mall | 2.0 km |
| 17 | MITSUKOSHI BGC | 2.2 km |
| 18 | Venice Grand Canal Mall | 2.2 km |



HOSPITALS:

| | | |
|----|-------------------------------|--------|
| 19 | St. Luke's Medical Center BGC | 1.1 km |
| 20 | Ospital ng Makati | 2.3 km |



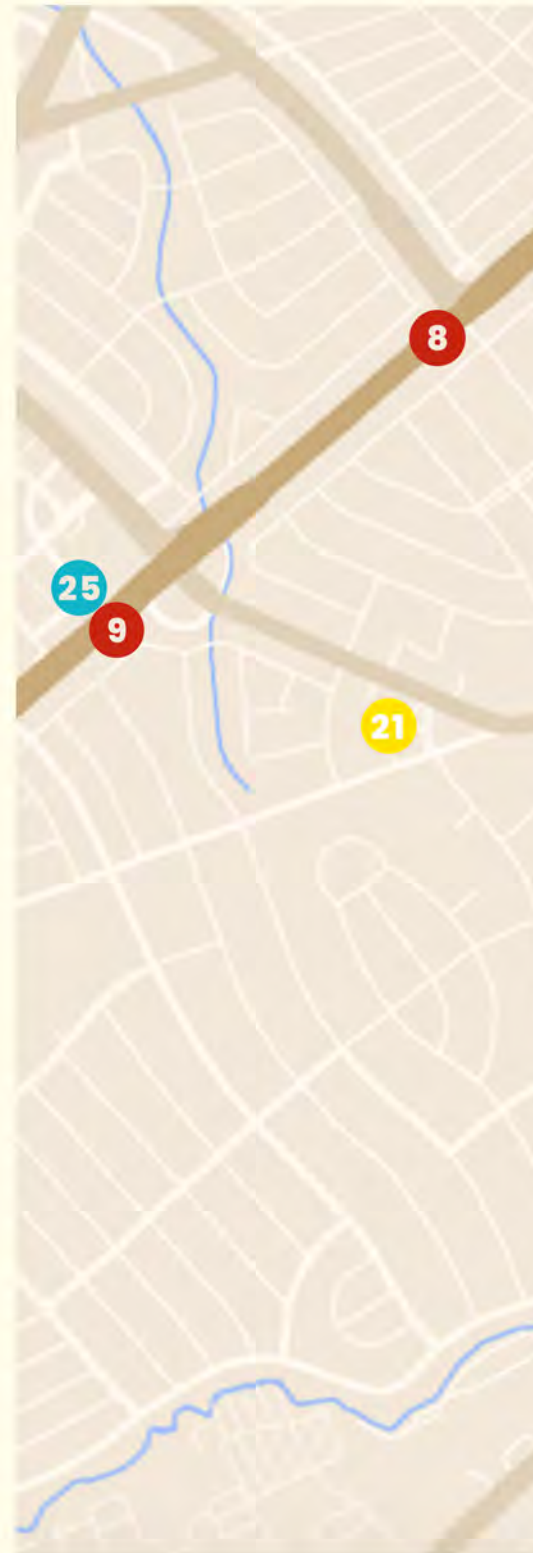
CHURCHES:

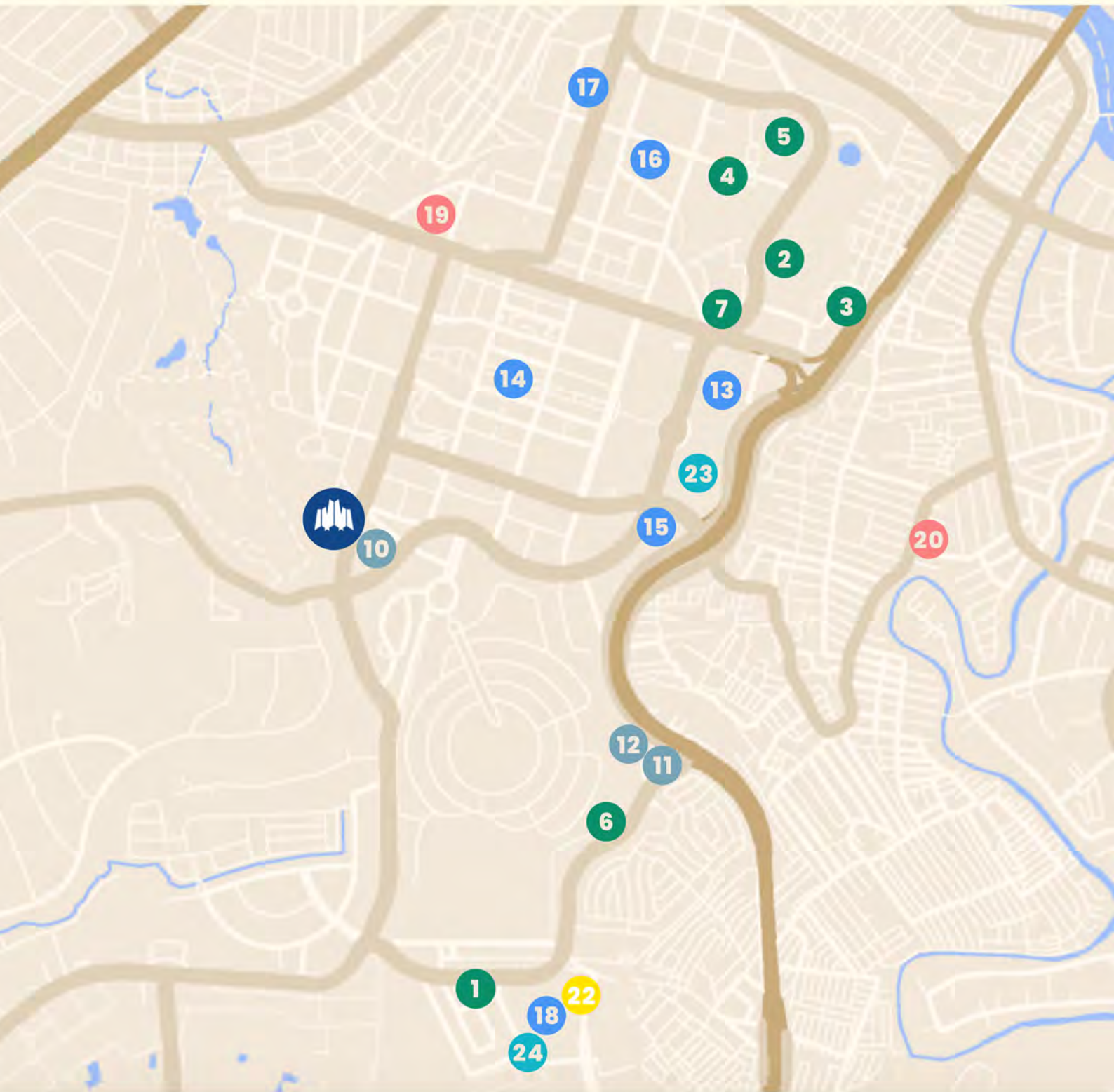
| | | |
|----|--------------------------|--------|
| 21 | Santuario de San Antonio | 1.7 km |
| 22 | St. Raphael Chapel | 2.2 km |



TRANSPORT HUBS:

| | | |
|----|----------------------------------|--------|
| 23 | Worthy Bus Station | 1.5 km |
| 24 | Venice Grand Canal Transport Hub | 2.0 km |
| 25 | Ayala Station Bus Stop | 2.4 km |





A PROJECT OF:



New San Jose Builders, Inc.

GET IN TOUCH

info@nsjbi.com.ph

We will help you make your dream a reality

OFFICE

Victoria Towers, Panay Avenue corner
Timog Avenue Quezon City,
1128 Metro Manila

HELP

(02) 8442 7777
+63 917 800 2206

FOLLOW US

[newsan joseofficial](#)
[newsan josebuildersofficial](#)
[newsan josebuildersofficial](#)

WEBSITE:

www.nsjbi.com



DEVELOPER:

New San Jose Builders, Inc.

DATE COMPLETED

December 31, 2013

DHSUD NCR

AA-2025/01-4788

DHSUD LS No.

22694