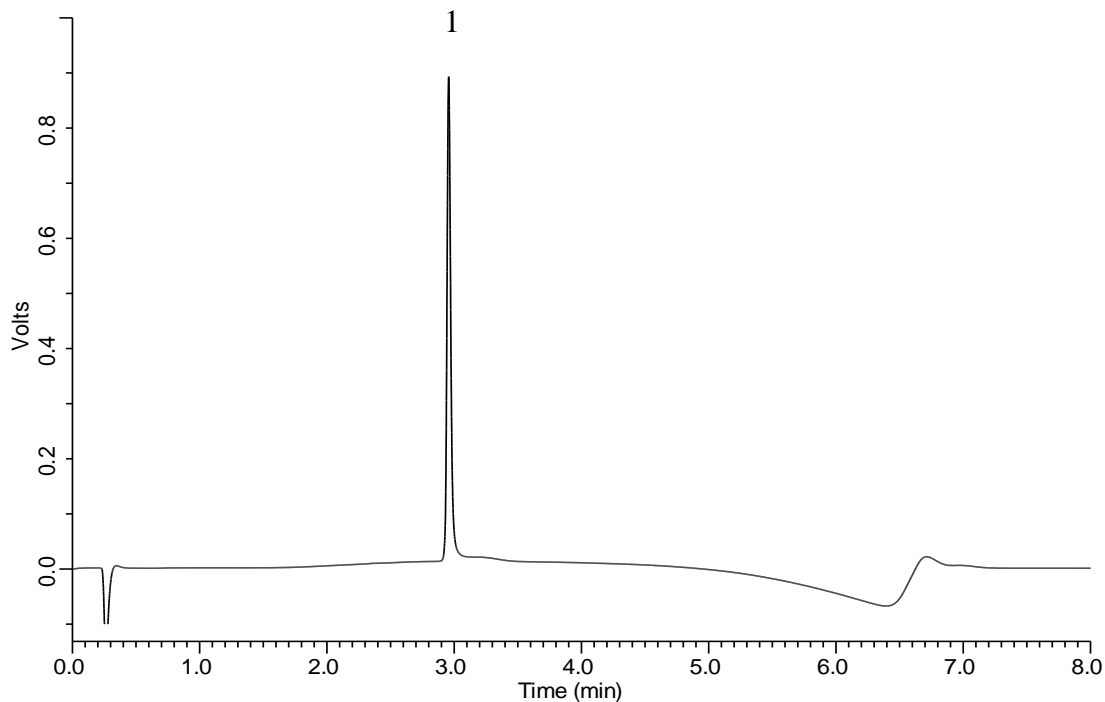


# InertSearch for LC

Inertsil Applications

## Analysis of Lysozyme

Data No. LB665-0812



### Conditions

**Column Cat. No. :** 5020-10818  
**Column :** MonoSelect RP-mAb  
(20 x 2.1 mm I.D.)  
**Eluent :** A) 0.1% TFA in CH<sub>3</sub>CN  
B) 0.1% TFA in H<sub>2</sub>O  
A/B = 5/95-5 min-90/10-0.1 min-5/95-3 min  
**Flow Rate :** 0.3 mL/min  
**Col. Temp. :** 80 °C  
**Detection :** UV 210 nm  
**Injection Vol. :** 5 μL  
**Sample :** Standard

### Analyte:

1. Lysozyme 0.1 mg/mL