



**2023-24**



**April 6, 2024**



**Melrose Youth Hockey**

**Celebrating 55 Years of  
Boston Bruins Tradition on Ice**





OFFICIAL

# Chicken Sandwich

OF THE

# Boston Bruins Alumni Association

  
Greater Boston Area & New Hampshire

JAMES  
&  
WHITNEY  
Co.

PROUD TO BE THE OFFICIAL  
ROOFING + EXTERIORS  
PARTNER OF THE  
BOSTON BRUINS ALUMNI  
ASSOCIATION!

SERVING  
MAINE &  
NEW  
HAMPSHIRE!



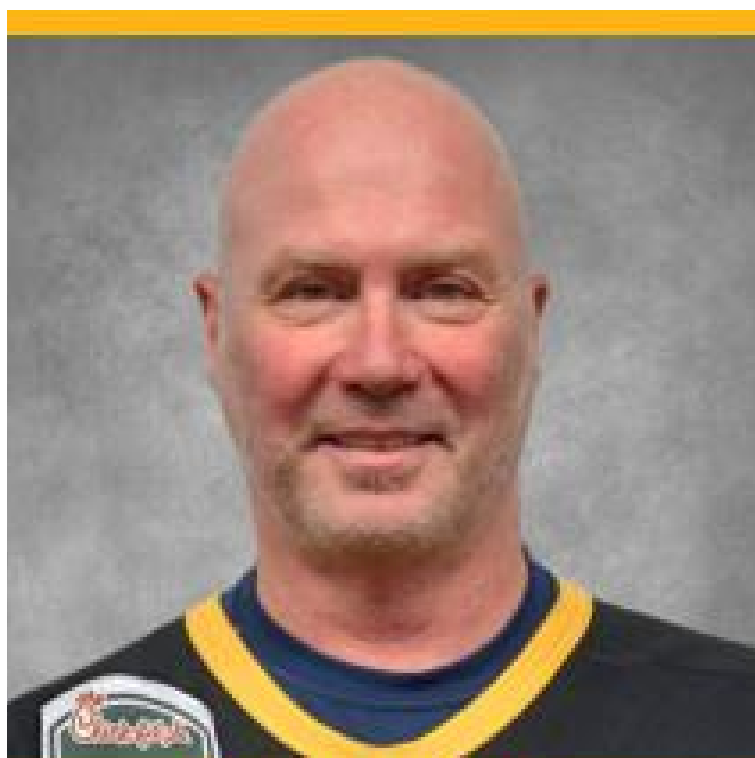
ROOFING  
SIDING  
DECKING +  
MORE!



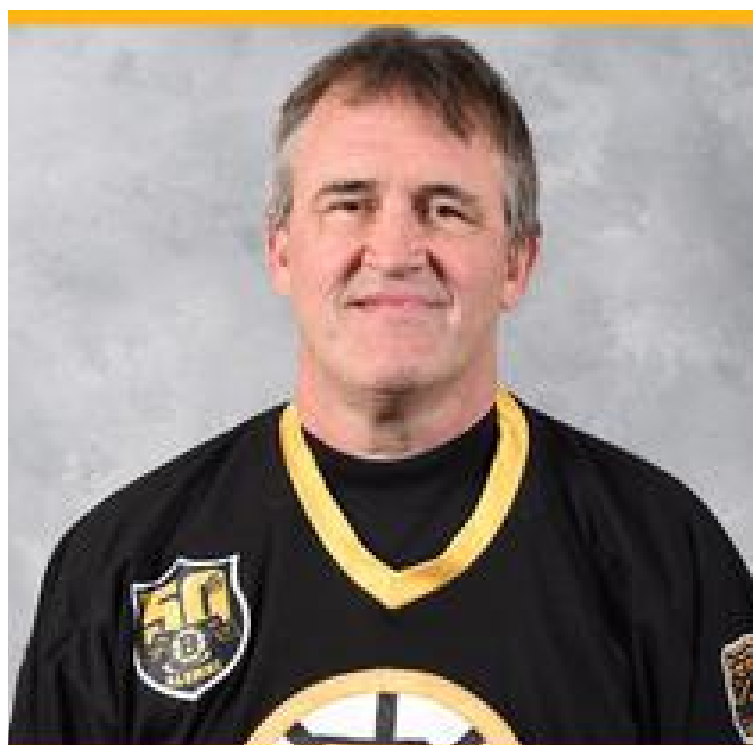
# Boston Bruins Alumni Roster

	Coach	Tom Songin	Boston College, 3 years with Boston Bruins
	Coach	Andy Brickley	14 years pro hockey; 10 with Boston Bruins
#52	Goalie	Shamus Egan	Merrimack College
#1	Forward	Reggie Lemelin	15 years in NHL; 6 years with Boston Bruins
#1	Forward	Andrew Raycroft	11 NHL seasons; 6 with Boston Bruins
#10	Forward	Kenny Hodge	4 years in NHL; 2 years with Boston Bruins
#11	Forward	Joe Mullen	17 NHL seasons; 1 with Boston Bruins
#18	Forward	Mark Mowers	7 NHL seasons, 1 with Boston Bruins
#19	Forward	Peter Douris	11 years in NHL; 4 with Boston Bruins
#20	Forward	Bob Sweeney	10 years in NHL; 6 with Boston Bruins
#21	Defense	Frank Simonetti	4 years with Boston Bruins
#32	Forward	Bruce Crowder	4 years in NHL; 3 with Boston Bruins
#40	Defense	Bruce Shoebottom	4 NHL seasons with Boston Bruins
#42	Forward	Tim Sweeney	8 years in NHL; 3 with Boston Bruins
#52	Defense	Chris Dymant	2 years with Providence Bruins
#70	Defense	Patrick Mullen	Son of Joe Mullen
	Forward	Brad Staubitz	6 NHL seasons; San Jose, Minn. Montreal, Anaheim
	Guest Skater	Mike Penhollow	Executive Producer and Sr. Manager of Video Production for Boston Bruins
	Referee	Don Garcia & Doug Smith	

**BOSTON BRUINS ALUMNI TEAM**  
**2023-24 season**



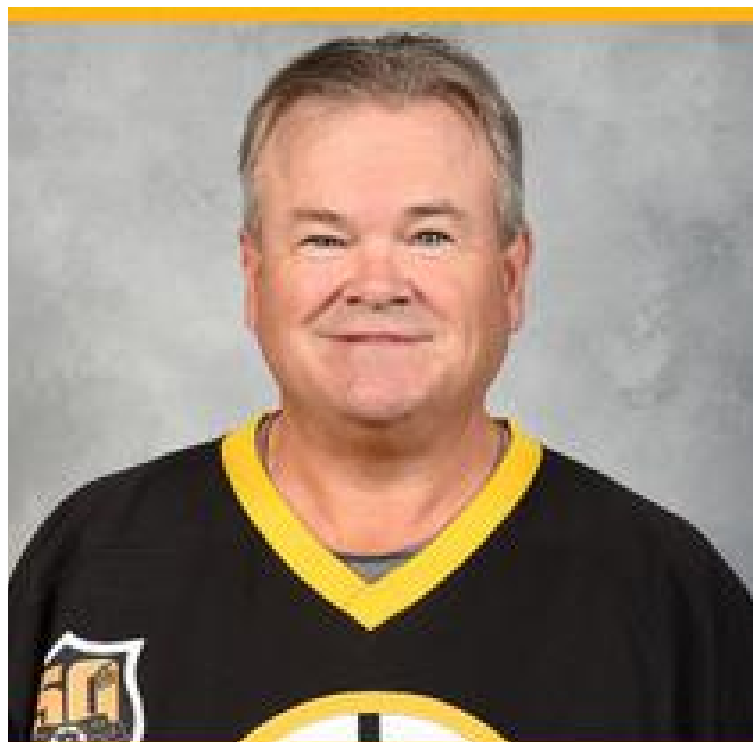
**Peter Douris**  
1989-1993



**BRUCE SHOEBOTTOM**  
1987-1991



**KEN HODGE, JR**  
1990-1992



**TIM SWEENEY**  
1992-93 & 1994-97

**Boston Bruins Tradition on Ice**

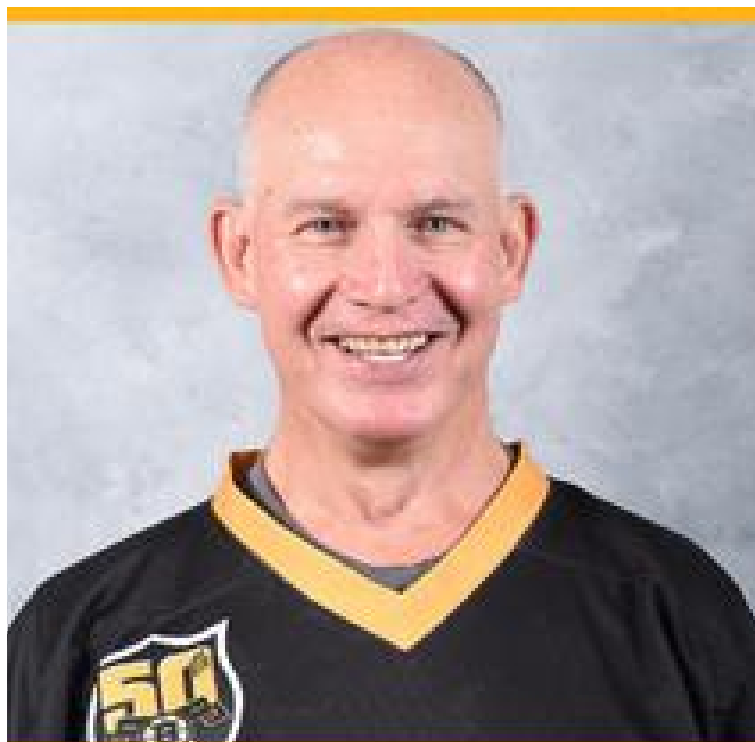
**BOSTON BRUINS ALUMNI TEAM**  
**2023-24 season**



**BOB SWEENEY**  
1986-1992



**FRANK SIMONETTI**  
1984-1988



**JOEY MULLEN**  
1995-1996



**SHAMUS EGAN**  
Honorary Alumni

**Boston Bruins Tradition on Ice**

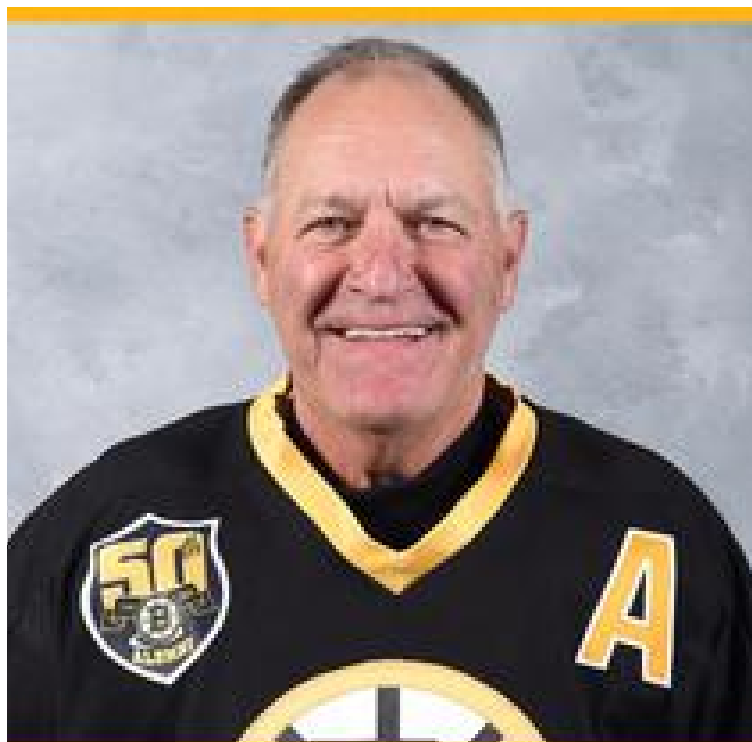
**BOSTON BRUINS ALUMNI TEAM**  
**2023-24 season**



**MARK MOWERS**  
2006-2007



**ANDREW RAYCROFT**  
2000-2006



**REJEAN LEMELIN**  
1987-1993

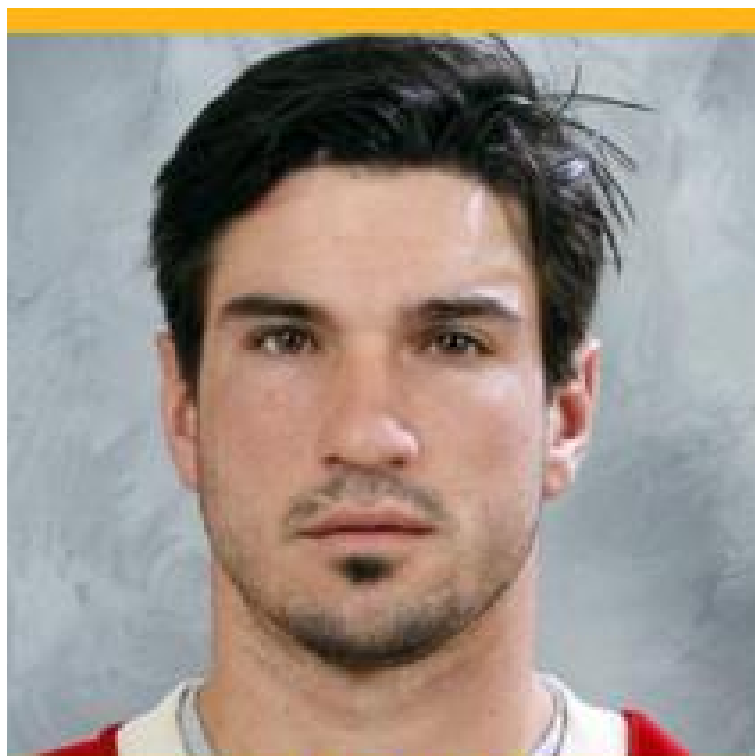


**BRUCE CROWDER**  
1981-1984

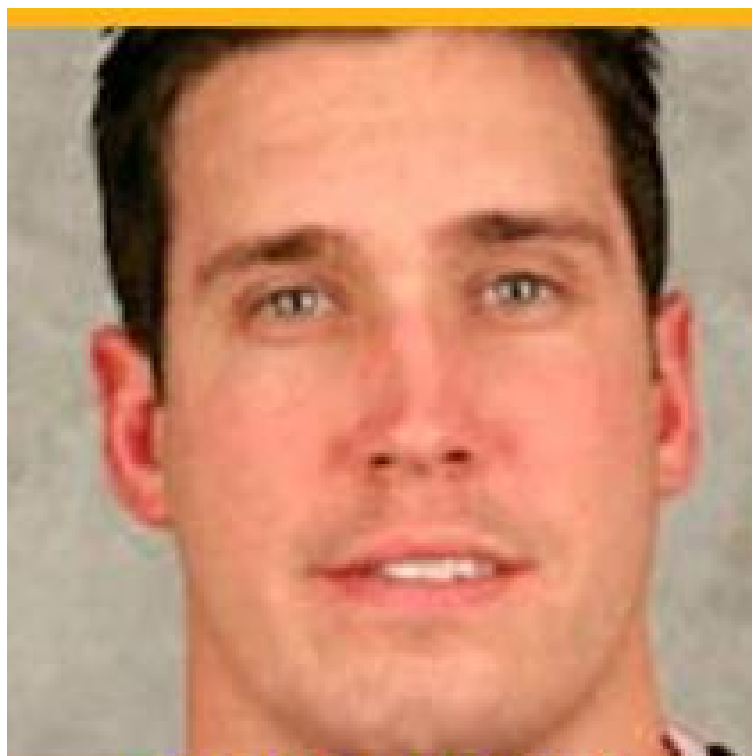
**Boston Bruins Tradition on Ice**



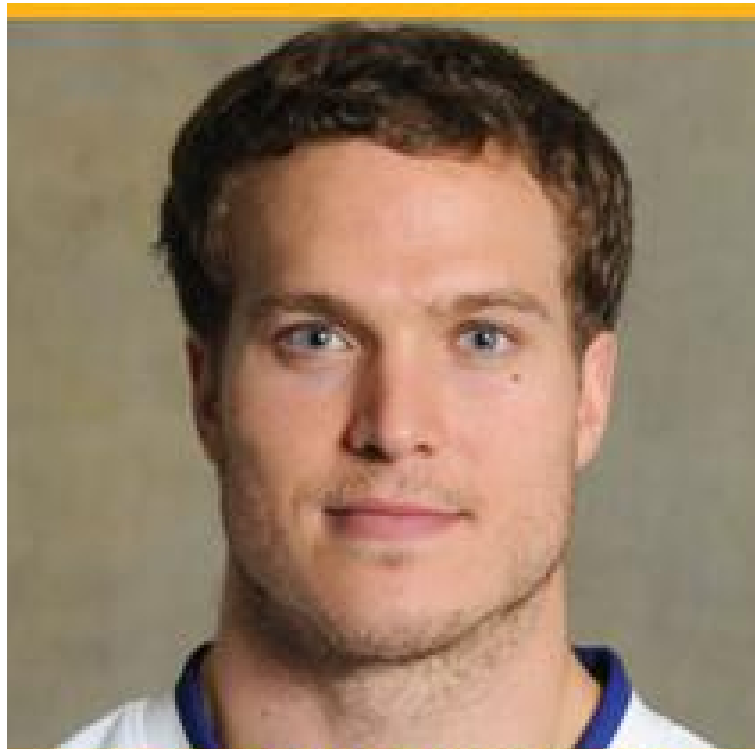
**BOSTON BRUINS ALUMNI TEAM**  
**2023-24 season**



**Brad Staubitz**  
NHL Alumni



**CHRIS DYMENT**  
Providence Bruins

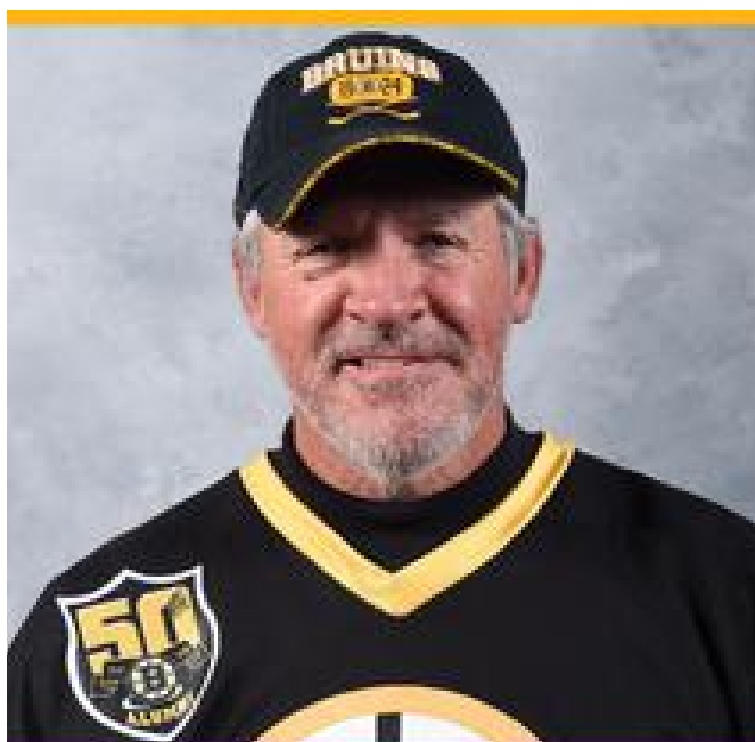


**PATRICK MULLEN**  
Honorary Alumni

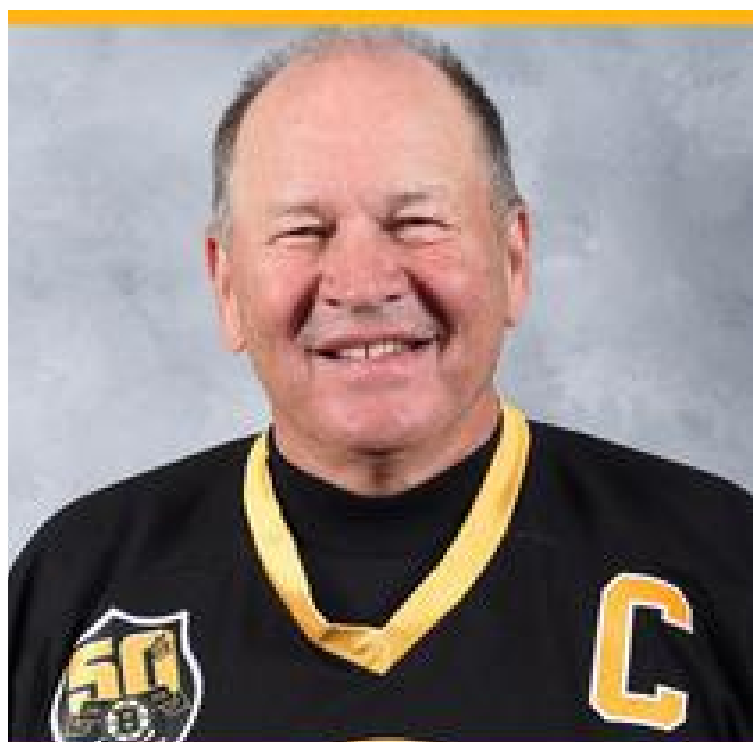


**Boston Bruins Tradition on Ice**

**BOSTON BRUINS ALUMNI TEAM**  
**2023-24 season**



**ANDY BRICKLEY**  
1988-1992



**TOM SONGIN**  
1978-1981



**Don Garcia**  
Referee



**Doug Smith**  
Referee

**Boston Bruins Tradition on Ice**

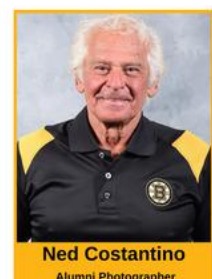
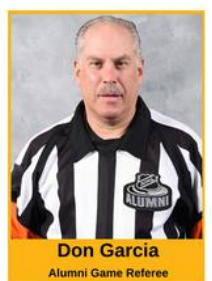
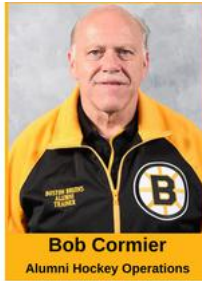
# BOSTON BRUINS ALUMNI TEAM 2023-2024 season



**Kevin P. Foley**  
Proud Sponsor and Counsel of the  
Boston Bruins Alumni!

**Cam Foley**  
Bruins 2034

Attorney Kevin P. Foley, PC  
246 High Street  
Newburyport, MA 01950  
(978) 462-7076  
kevin@kevinfoleypc.com



**Watch Today's Game on May 15  
at [BostonBruinsAlumni.com](http://BostonBruinsAlumni.com)**

# 2023-24 Schedule

Saturday, November 4, 2023 at 4:00pm  
 Saturday, November 11, 2023 at 2:00pm  
 Saturday, November 18, 2023 at 1:00pm  
 Sunday, November 19, 2023 at 2:00pm

DCU Center, Worcester, MA  
 Warrior Ice Arena, Brighton, MA  
 NESG, Marlborough, MA  
 Warrior Ice Arena, Brighton, MA

Why Me & Sherry's House  
 Team Edna  
 Wes Tuttle Foundation  
 Mass. Down Syndrome Congress

Saturday, December 2, 2023 at 4:00pm  
 Sunday, December 17, 2023 at 2:00pm

Warrior Ice Arena, Brighton, MA  
 Warrior Ice Arena, Brighton, MA

Warrior for Life Fund  
 Matt Light Foundation

Saturday, January 6, 2024 at 4:00pm  
 Saturday, January 13, 2024 at 4:00pm  
 Sunday, January 14, 2024 at 4:00pm  
 Saturday, January 20, 2024 at 2:00pm  
 Sunday, January 21, 2024 at 2:30pm  
 Friday, January 26, 2024 at 7:00pm

Pop Whalen Arena, Wolfeboro, NH  
 Berkshire School, Sheffield, MA  
 Tsongas Arena, Lowell, MA  
 Warrior Ice Arena, Brighton, MA  
 Skate 3, Tyngsboro, MA  
 Wells Fargo Center, Philadelphia, PA

Friends of Pop Whalen  
 Berkshire County Special Rec. Team/WFL  
 Bridge Club of Greater Lowell  
 Warrior for Life Fund  
 Tom Smith Foundation  
 50<sup>th</sup> Anniv. of Flyers 1974 Stanley Cup

Saturday, February 3, 2024 at 1:00pm  
 Sunday, February 4, 2024 at 3:00pm  
 Saturday, February 17, 2024 at 3:00pm  
 Saturday, February 24, 2024 at 1:00pm  
 Sunday, February 25, 2024 at 2:30pm

The Bog, Kingston, MA  
 Everett Arena, Concord, NH  
 Walter Brown Arena, Boston, MA  
 Amelia Park Arena, Westfield, MA  
 Asiaf Arena, Brockton, MA

Great Blizzard Special Hockey  
 Stephen Cmar ROTC Scholarship Fund  
 Salesforce/Just Keep Livin  
 Amelia Park Arena/Westfield Police Dept.  
 Brockton Fire Department

Saturday, March 2, 2024 at 2:00pm  
 Sunday, March 10, 2024 at 2:00am  
 Saturday, March 16, 2024 at 2:00pm  
 Saturday, March 23, 2024 at 2:00pm  
 Sunday, March 24, 2024 at 2:00pm  
 Saturday, March 30, 2024 at 1:00pm

The Colisée, Lewiston, ME  
 Rinks at Exeter, Exeter, NH  
 Dover Ice Arena, Dover, NH  
 Warrior Ice Arena, Brighton, MA  
 Larsen Rink, Winthrop, MA  
 Veteran's Memorial Rink, Haverhill, MA

Lewiston Police Department  
 Spartans for Life  
 My Breast Cancer Support  
 Moments that Matter  
 Boston Bruins Foundation  
 Haverhill Police Relief Association

Sunday, April 7, 2024 at 2:00pm  
 Saturday, April 13, 2024 at 3:00pm  
 Sunday, April 14, 2024 at 1:00pm  
 Saturday, April 20, 2024 at 2:00pm  
 Sunday, April 28, 2024 at 1:00pm

Warrior Ice Arena, Brighton, MA  
 Quincy Ice Arena, Quincy, MA  
 Danbury Ice Arena, Danbury, CT  
 Warrior Ice Arena, Brighton, MA  
 Benny Magiera Mem. Rink W. Warwick, RI

Dana Farber Cancer Institute  
 Rucks2Pucks  
 Danbury Girls Hockey  
 Stanley Keg Games  
 Central Rhode Island Knights Hockey

IT'S TIME FOR  
 YOUR BRAND TO  
 TAKE CENTER ICE.

DISCOVER THE PERFECT LOCATION FOR YOUR  
 BUSINESS WITH OVERTIME REAL ESTATE.



OVERTIME  
 REAL ESTATE



PAT LEAHY

PAT@OVERTIMERE.COM

@OVERTIMERELL



# Erik's Barber Shop



Marblehead, MA • Melrose, MA

[EriksBarberShop.com](http://EriksBarberShop.com)

Proud sponsor of Melrose Youth Hockey  
vs Bruins Alumni Fundraiser

# HINGE

**STRENGTH & CONDITIONING**

18 Oak Grove, Melrose, MA 02176

[WWW.HINGEFITNESS.COM](http://WWW.HINGEFITNESS.COM)

781.205.9204

@HINGE\_FITNESS

[INFO@HINGEFITNESS.COM](mailto:INFO@HINGEFITNESS.COM)



|||||

# POWER & EDGE CLASSES

- Hockey camps for all ages and skill levels
- Small Group Lessons
- Private Lessons

**COURTNEY SHEARY**



@SHEARS\_SKILLS  
CSHEARY3@GMAIL.COM

**JACQUI VONA**



@JACQUI\_POWERANEDGE  
WWW.JVPOWERANEDGE.COM



# Go Melrose Youth Hockey!

## We are proud of you!



NICK LENTO  
REALTOR® | CPA  
617.755.5804  
Nick.Lento@CBRealty.com



STEPHANIE RIVKIND FINNIGAN  
REALTOR®  
617.699.9823  
Stephanie.Rivkind@CBRealty.com



COLDWELL BANKER  
REALTY

Not intended as a solicitation if your property is already listed by another broker. Affiliated real estate agents are independent contractor sales associates, not employees. ©2024 Coldwell Banker. All Rights Reserved. Coldwell Banker and the Coldwell Banker logo are trademarks of Coldwell Banker Real Estate LLC. The Coldwell Banker® System is comprised of company owned offices which are owned by a subsidiary of Anywhere Advisors LLC and franchised offices which are independently owned and operated. The Coldwell Banker System fully supports the principles of the Fair Housing Act and the Equal Opportunity Act.







LAW OFFICE OF SEAN F. O'BRIEN  
MASSACHUSETTS & NEW HAMPSHIRE  
**Real Estate Attorney**



# signature

PRINTING & CONSULTING

Visit our website at [sigprint.net](http://sigprint.net) and see why we are  
Print management & consulting. Redefined.



Signature Printing + Consulting  
800 West Cummings Park, Suite 2900, Woburn MA 01801  
781•939•0991 [sigprint.net](http://sigprint.net)



# WORKLERY

COWORKING ● GALLERY ● EVENT SPACE

[WWW.WORKLERY.COM](http://WWW.WORKLERY.COM)

441 MAIN ST, MELROSE MA 02176  
[MEL@WORKLERY.COM](mailto:MEL@WORKLERY.COM)



INTERNATIONAL ASSOCIATION OF

BRIDGE, STRUCTURAL,

IW  
LOCAL



ORNAMENTAL AND REINFORCING IRON WORKERS



# LEGACY

## HEALING CENTER





# KANE LIFE COACHING

Life is Good.

Providing addiction recovery treatment plans based on your individual needs.

**Call 617-306-7800 to get help.**

Jimmy Kane- Founder  
[Kanelifecoaching.com](http://Kanelifecoaching.com)



# First Class Tinknocker LLC.

Malden, Ma



(617) 697-7455

Buy, Sell, Trade New and Used Sports Equipment



62 Montvale Ave Stoneham, MA

781.438.2399



*13 boys In The Morning*



*Billy's Roast Beef & Seafood*

THE FINEST ROAST BEEF SANDWICHES NORTH OF BOSTON



TD GARDEN IS PROUD TO SUPPORT THE  
BOSTON BRUINS ALUMNI ASSOCIATION.



From your friends at TD Garden, proud home of the Boston Bruins.

**TD GARDEN**



# Keep us in your sites.



## Proud sponsor of the Boston Bruins: past, present and future

- Site Development
- Soil Remediation
- Earthwork

- Utility Work
- Site Improvements
- Equipment Rental

**JAMES W.**

**FLETT**

**CO. INC.**

**EXCAVATING CONTRACTORS**

800 Pleasant Street, Belmont, MA 02478 • 617-484-8500 • Fax 617-484-1279 • [www.jwflett.com](http://www.jwflett.com)

# YOUR TEAM, YOUR CHOICE.

We believe in building winning partnerships to protect your team for tomorrow. Whether your team is your family, business, or your employees, you can depend on Cross Insurance for the best insurance solutions.



COMMERCIAL INSURANCE   PERSONAL INSURANCE   EMPLOYEE BENEFITS   SURETY

OFFICIAL INSURANCE BROKER



[www.crossagency.com](http://www.crossagency.com)

# Original Boston Garden established in 1928 Dolben established in 1929

## The difference is DOLBEN

We are the Dolben Company – a dynamic real estate firm, with a family inspired culture, developing and managing best-in-class multifamily communities throughout the New England and Mid-Atlantic markets since 1929.

With our core value of stewardship, coupled with our extensive industry experience, we maximize each and every investment's potential.

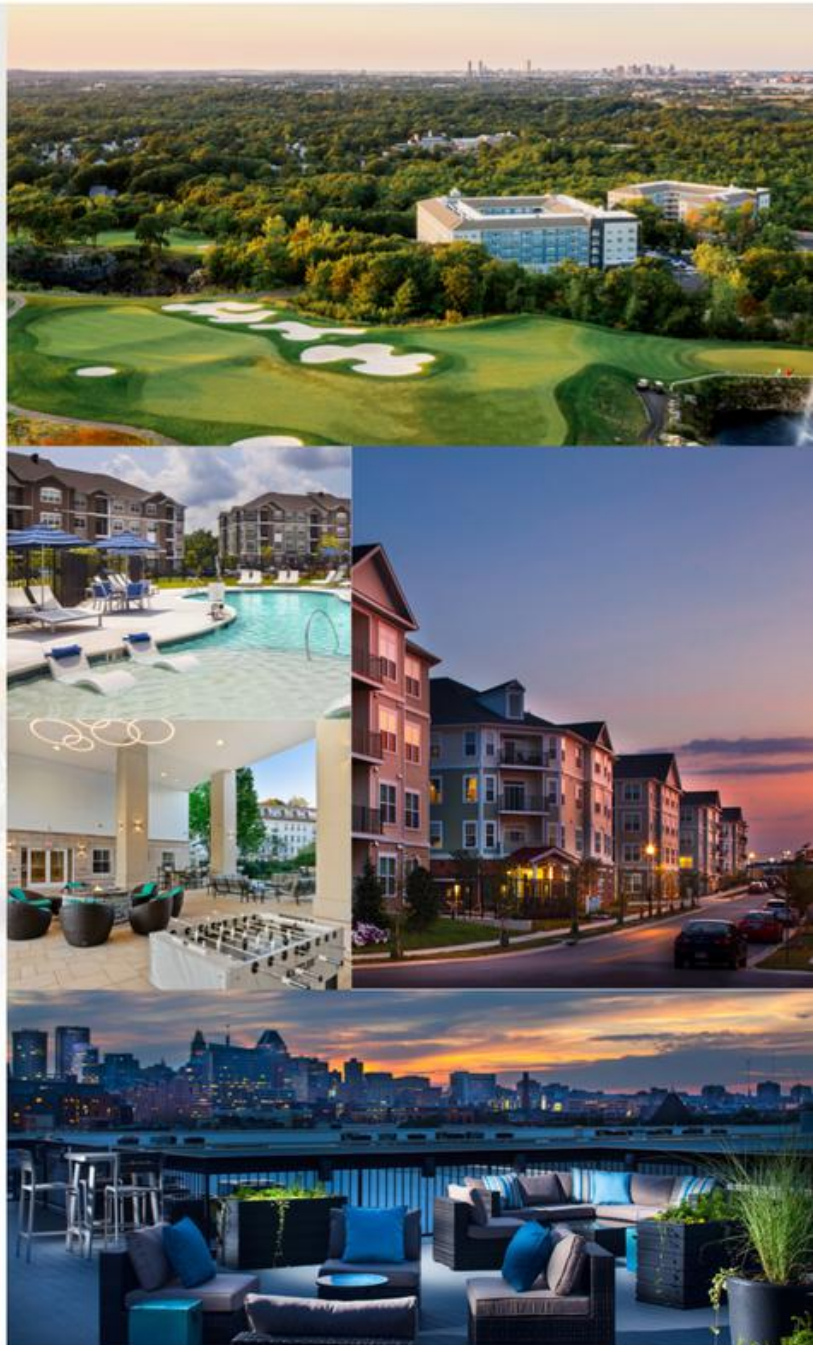
We are industry-leading experts with an innovative mindset. From site selection through construction – no development detail is too small.

We always put our residents first, working tirelessly to create communities people are proud to call home.

We are committed to fostering an inclusive and collaborative company culture that inspires personal and professional growth.

# LET'S GO BRUINS!

DEVELOPMENT  
MANAGEMENT  
INVESTMENT



Founding Member of



150 Presidential Way, Suite 220 Woburn, MA 01801 | DOLBEN.COM



# TRESCA

**Delicious Italian food  
and traditional  
hospitality in  
Boston's North End.**

233 Hanover Street  
Boston, MA 02113  
p: 617-742-8240  
f: 617-742-8246

[info@trescanorthend.com](mailto:info@trescanorthend.com)



Multi Family

Hotels

KELLY'S

Student Housing

Turner Hill Golf Club

# AAM15

Real Estate Investment & Management

**David R. Masse**  
CEO / Founder

AAM15 Management, LLC is an independent private equity investment and management company with strong investment performance in commercial real estate spanning the East Coast of the United States.

[www.aam15.com](http://www.aam15.com)



**WARRIOR ICE ARENA**



"Official Practice Arena"



"Official Home Arena"





# ATTENTION!

- › Carpenters
- › Electricians
- › Plumbers
- › HVAC
- › Landscapers
- › Other Contractors

**Want to save money on your insurance?** Talk to us.  
**Get a free 2nd opinion.** Give us a chance...you've got nothing to lose!

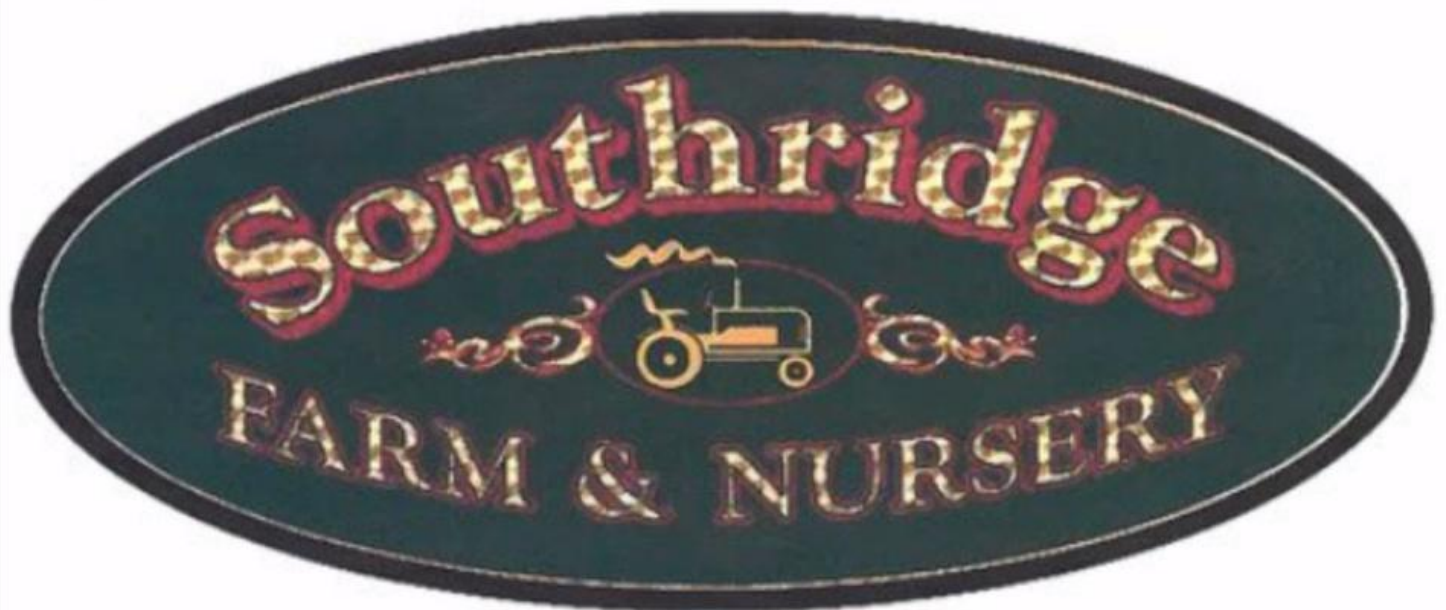
PROPERTY      LIABILITY      COMMERCIAL AUTO      UMBRELLA      EMPLOYEE BENEFITS  
WORKERS' COMP      BONDS      EMPLOYEE BENEFITS      DISABILITY      LIFE



508 787 5177



[businessinsurance@dfmurphy.com](mailto:businessinsurance@dfmurphy.com)





*Killington*





# LEGS®

LEGACY EQUITY GROWTH SERVICES



**PJ HAYES INC.**  
EXCAVATING

399 SOUTH ST. WALPOLE MA 02081 | 508-668-9710

# ATG

ADVANTAGE TRUCK GROUP  
WE KNOW TRUCKS.



EXPERIENCE  
**THE POWER** OF THE ATG NETWORK



MASSACHUSETTS | NEW HAMPSHIRE | VERMONT

AdvantageTruckNE.com  
877-4-ATG-HELP



*In Memory of our  
Departed Friend*



**ED SANDFORD  
1928-2023**