

# BT METALS

 [sales@bendtechgroup.com.au](mailto:sales@bendtechgroup.com.au)

 [www.bendtechgroup.com.au](http://www.bendtechgroup.com.au)

 2-10 Kewdale Road, Welshpool WA 6106

 **PERTH** (08) 9459 8600



A large, stylized version of the 3T METALS logo is overlaid on a photograph of a metal fabrication shop. The background shows various metal parts, including large pipes and structural beams, arranged on wooden pallets in a well-lit industrial setting.

- Save up to 50% on fabrication times with precision cut parts
- End-to-end solution including drafting, supply, cutting, pressing, welding, powder coating and galvanising
- Etching and marking of locations, part numbers and tab and slot connections
- Unmatched accuracy with our 5 Axis Tube Laser and Flat Bed Laser
- Small and large batch runs
- High raw material stock holdings
- Overnight cutting upon request

# ***CONTENTS***

<i><b>TUBE LASER</b></i>	<b>4</b>
<i><b>FLAT BED LASER</b></i>	<b>6</b>
<i><b>PRESSING</b></i>	<b>8</b>



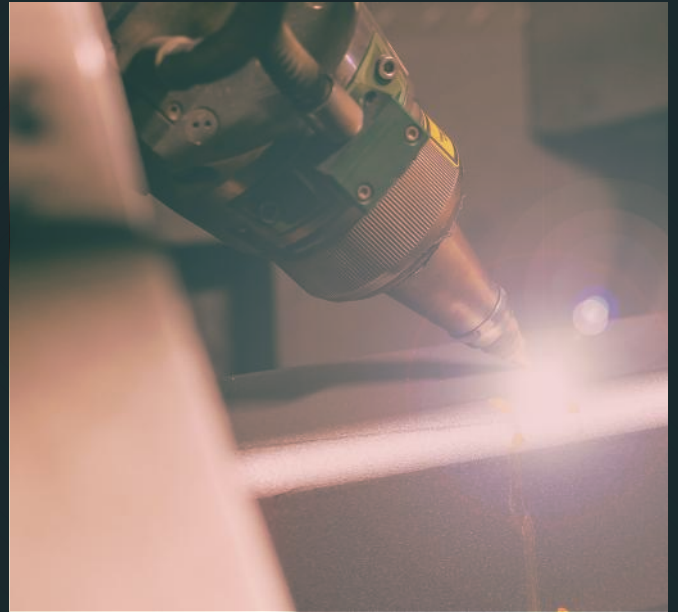
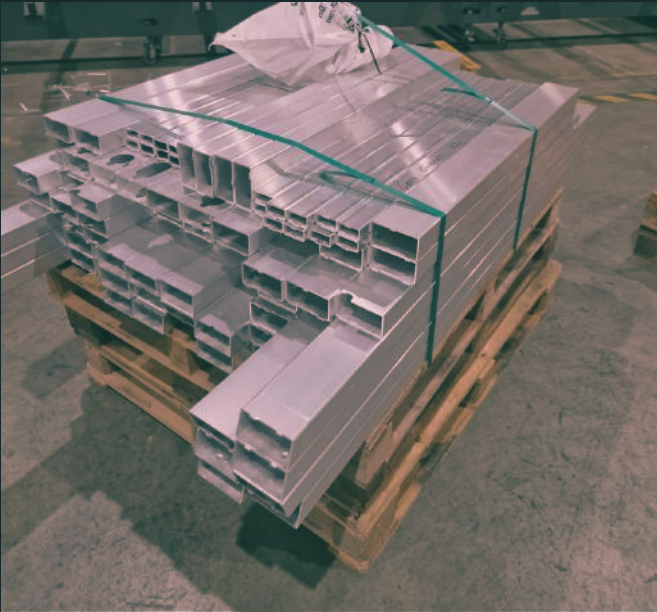
# 5 AXIS TUBE LASER

## KEY FEATURES

- 12.5m max load length
- 8.5m maximum part outfeed
- 3D cutting
- 40kg/m maximum bar weight
- 12mm maximum profile thickness
- 2D drawing the 3D file programming

Profile	Wall/Flange Thickness		Max Length (m) w	Max Bar Weight kg/m
	Stainless Steel /Steel (mm)	Aluminium		
Round Tube (CHS)	12	10	12.5	40
Square Tube (SHS)	12	10	12.5	40
Rectangular Tube (RHS)	12	10	12.5	40
Channel (PFC)	10	10	12.5	40
Universal Beam (UB)	10	10	12.5	40
Universal Column (UC)	11.5	10	12.5	40
Angle (EA/UA)	10	10	12.5	40

**METAL PROCESSING**



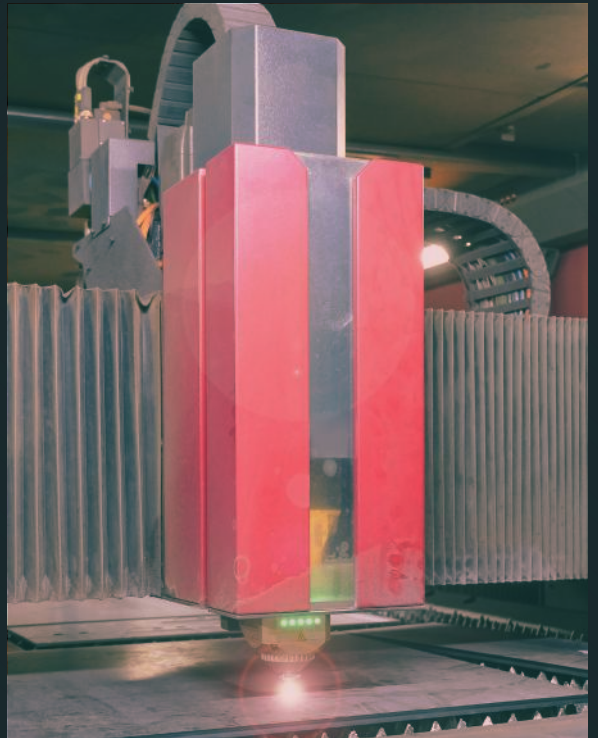
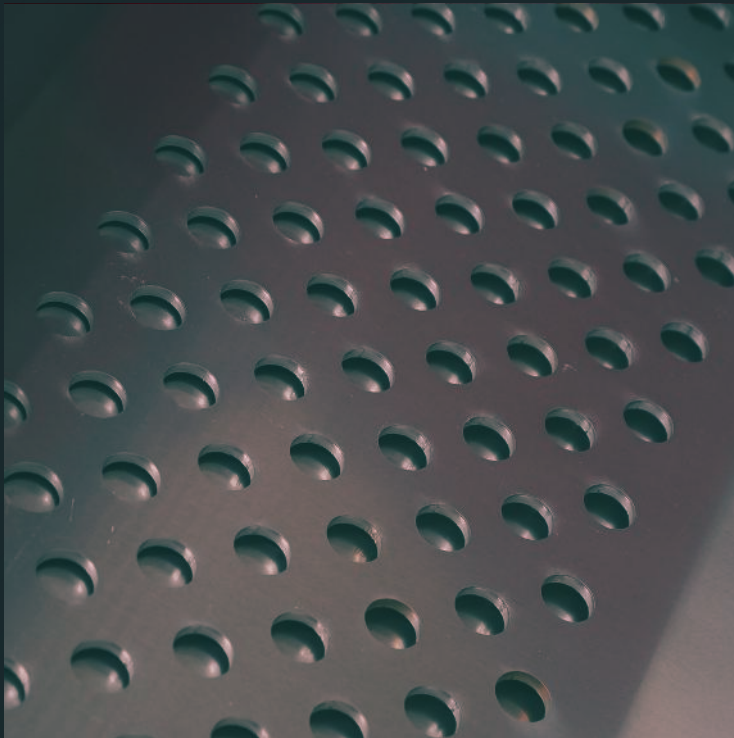
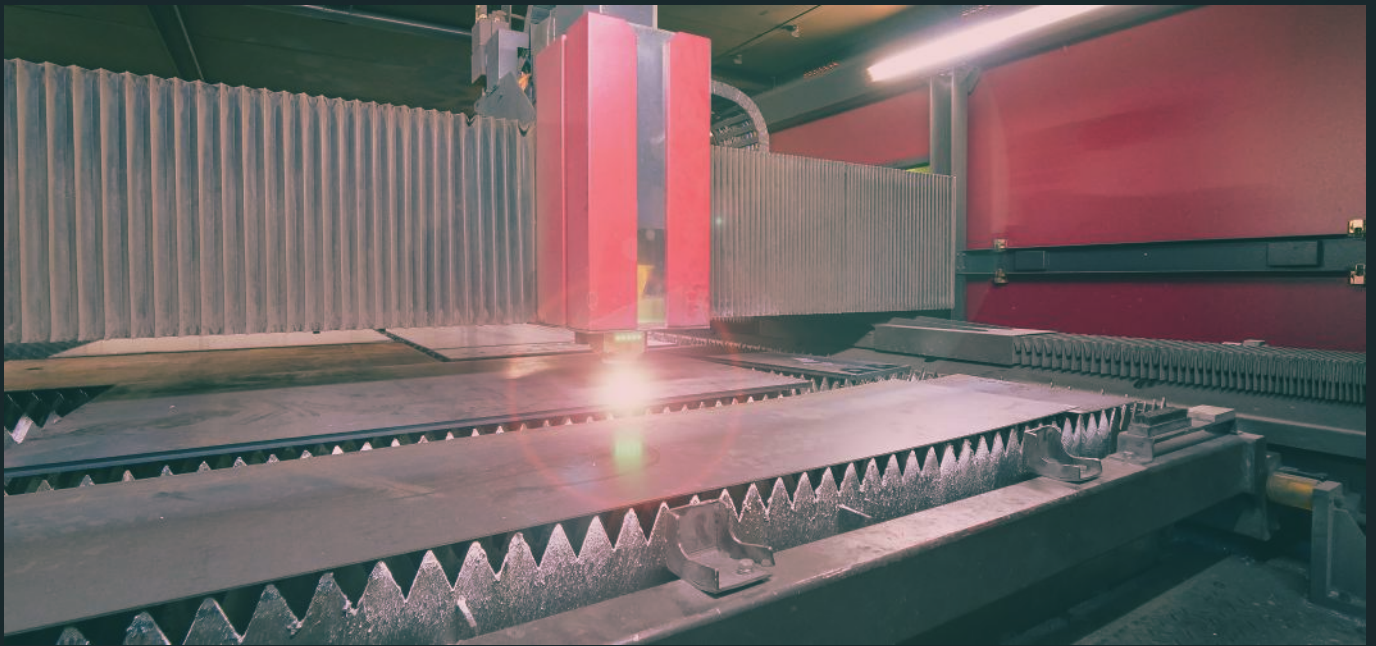


# 6m x 2.5m FLAT BED LASER

## KEY FEATURES

- Fiber resonator
- Maximum cutting size of sheet material: 6096mm x 2559mm
- Shuttle table system
- Steel, aluminium, stainless steel and wear plate

Output power	12.0kW
Mild steel	32mm
Stainless steel	32mm
Aluminium	32mm
Copper	10mm
Brass	15mm

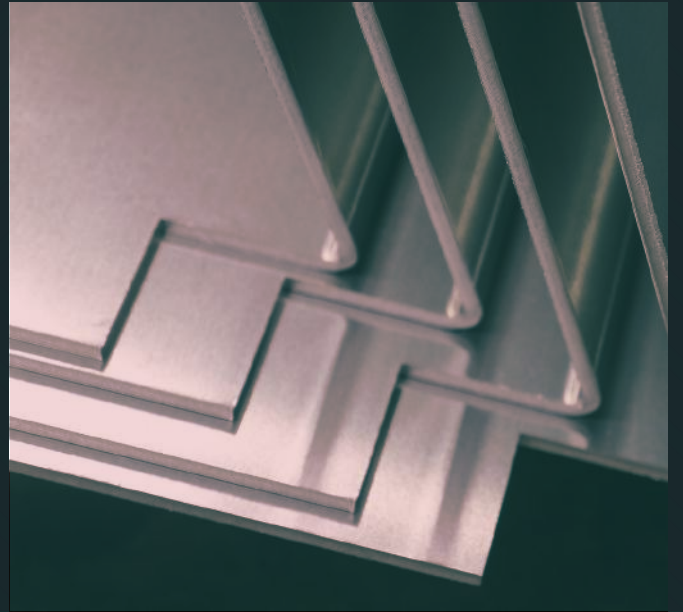
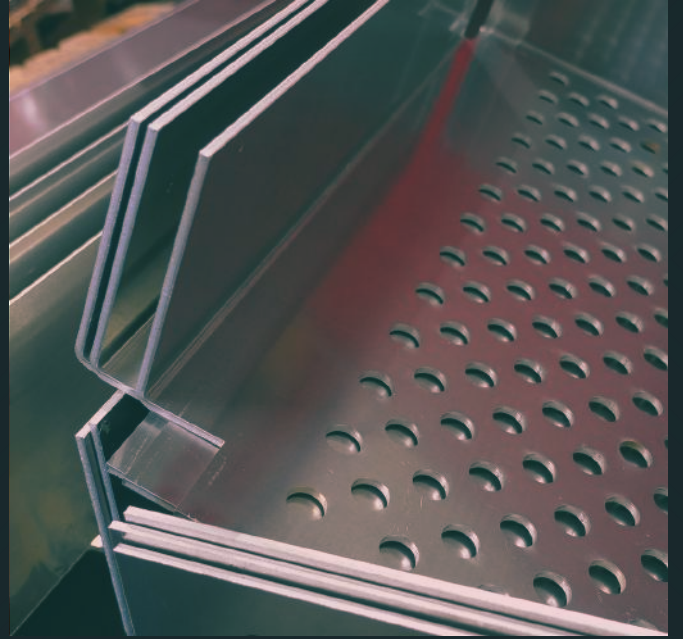




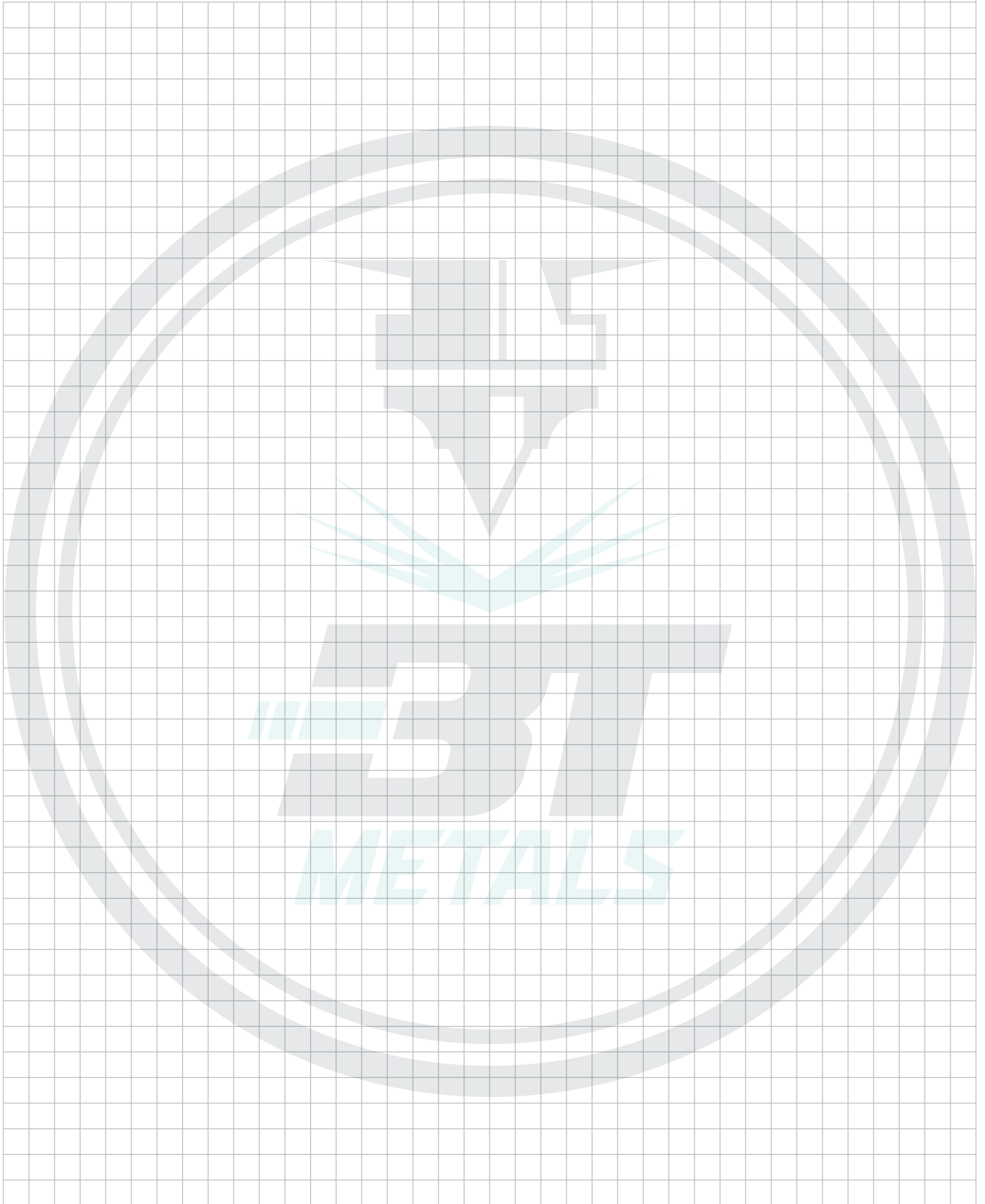
# PRESSING

## KEY FEATURES

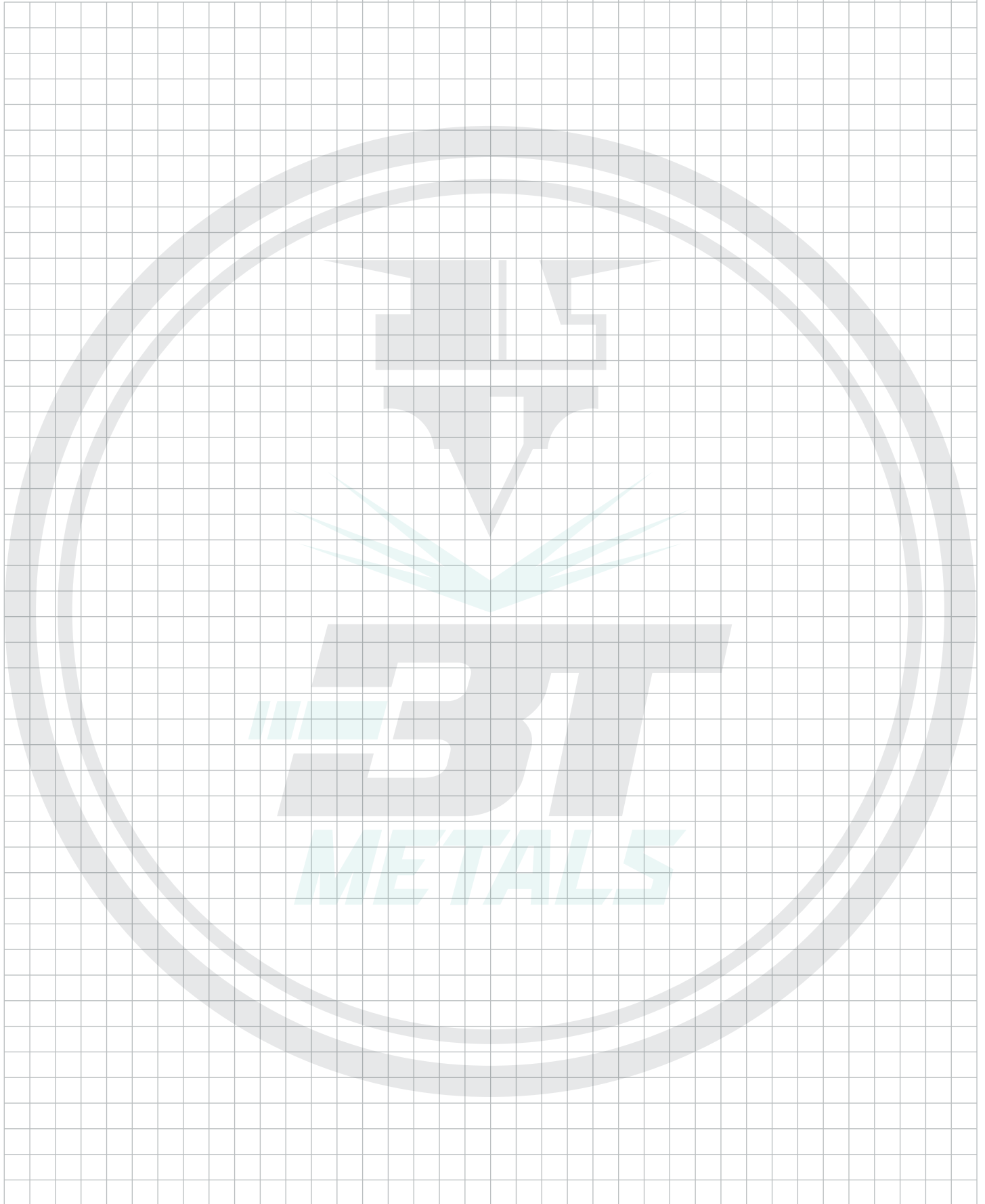
- 170/30 Press Brake
- Up to 170T
- Up to 3000mm



**TAKE NOTE**



# TAKE NOTE





[sales@bendtechgroup.com.au](mailto:sales@bendtechgroup.com.au)



[www.bendtechgroup.com.au](http://www.bendtechgroup.com.au)

