



JULY 25 - AUGUST 2, 2025

with optional  
Jackson Hole Post-Tour

# NATIONAL PARKS & LODGES OF THE OLD WEST

Orbridge



Dear Alumni and Friends,

Join us on an immersive adventure through the heart of America's most captivating landscapes, traversing wildlife-rich terrain, picturesque canyons and stunning mountain passes. Each engaging day is its own journey, highlighted by leisurely hikes, educational discussions and authentic Old West charm.

Stand in awe before the rugged majesty of Badlands National Park, safari amidst herds of bison and elk in Custer State Park, and delve into the cultural tapestry of the Black Hills with visits to the awe-inspiring Crazy Horse Memorial and the iconic faces of Mount Rushmore. Witness the geothermal wonders of Yellowstone, the grandeur of Grand Teton National Park and the genuine hospitality of Jackson Hole.

After fulfilling days, retreat to well-appointed properties and various landmark lodges that are national treasures themselves.

Space is limited. With significant savings of more than \$1,000 per couple, we anticipate this tour will fill quickly. To reserve, visit [ku.orbridge.com](http://ku.orbridge.com), call (866) 639-0079 or by returning the attached reservation form.

Sincerely,

*Austin Johanning*

Austin Johanning, g'20  
Assistant Director of Donor Relations  
KU Alumni Association



# National Parks & Lodges | Itinerary and Highlights *(subject to change)*

**Day 1: ARRIVE IN RAPID CITY, SD** Upon arrival an Orbridge Expedition Leader will be waiting to assist with your transfer to the hotel. Later join the group for a welcome dinner and tour briefing.  
Overnight: Hotel Alex Johnson (D)

**Day 2: RAPID CITY | BADLANDS NATIONAL PARK | CUSTER STATE PARK** Set out for Badlands National Park. Rich in fossil beds, the park provides a fascinating glimpse into the area's history. Continue to Wall for lunch on your own. At Custer State Park, board a safari Jeep for a thrilling wildlife tour.  
Overnight: Custer State Game Lodge (B,D)

**Day 3: MAMMOTH SITE | CRAZY HORSE | CUSTER** Visit the mammoth paleontological site, research center and museum. Walk the sinkhole and see the dig site and paleontology laboratory. Next visit the base and museum of Crazy Horse Memorial followed by an audio-visual program featuring artist Korczak Ziolkowski.  
Overnight: Custer State Game Lodge (B,D)

**Day 4: CUSTER | MOUNT RUSHMORE | SPEARFISH CANYON** Spend the morning at Mount Rushmore with time to explore the Visitor's Center and Sculptor's Studio or hike the Presidential Trail. Continue to Spearfish for the evening.  
Overnight: Spearfish Canyon Lodge (B,D)

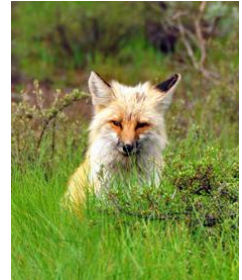
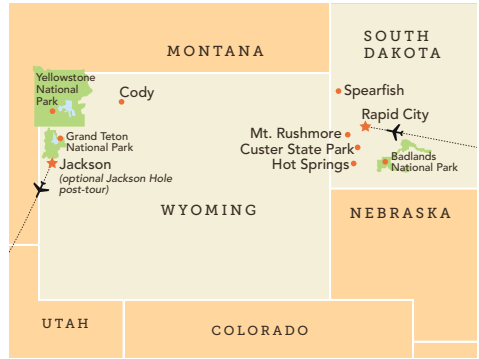
**Day 5: SPEARFISH CANYON | CODY, WY** Today is a scenic travel day to Cody, stopping at The Ranch at UCross for lunch.  
Overnight: Holiday Inn Cody-At Buffalo Bill Village (B,L)

**Day 6: CODY | YELLOWSTONE NATIONAL PARK** Visit the Buffalo Bill Center of the West that features five museums, a research library and special exhibitions. Continue to Yellowstone to see Old Faithful erupt and explore the Upper and Lower Falls.  
Overnight: Yellowstone Lodging (B,L,D)

**Day 7: YELLOWSTONE NATIONAL PARK** Enjoy a full day for independent park touring. Perhaps stroll Fountain Paint Pot Trail, see Mammoth Hot Springs, or visit the Albright Visitor Center and Museum.  
Overnight: Yellowstone Lodging (B,D)

**Day 8: YELLOWSTONE NATIONAL PARK | GRAND TETON NATIONAL PARK | JACKSON** Head south to Grand Teton National Park. Lunch is planned at Pioneer Grill at Jackson Lake Lodge. Tonight gather with fellow travel companions to celebrate the adventures of the past week at a farewell dinner.  
Overnight: Rustic Inn at Jackson Hole Creekside Resort and Spa (B,D)

**Day 9: DEPART JACKSON** After breakfast transfer to the airport for flights home. (B)



(B = Breakfast, L = Lunch, D = Dinner)



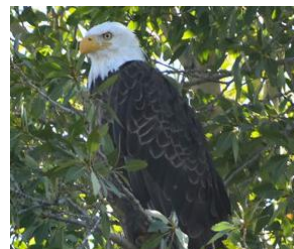
## What's Included

- 8 nights in unique accommodations and inspiring landmark lodges
- 8 breakfasts, 2 lunches and 7 dinners including special welcome and farewell meals
- Full guiding services of an Orbridge Expedition Leader as well as expert local guides
- All activities as described in the 9-day itinerary
- Admission and park fees
- Private deluxe motor coach with air conditioning and comfortable seating
- Luggage portage (where available)
- Gratuities to Orbridge Expedition Leader, local guides, drivers, porters and wait staff for included meals
- Airport transfers for guests arriving and departing during the suggested times

## Your Expedition Leader:

Enriched from the wealth of expertise provided by your Orbridge Expedition Leader, you'll bring home a deeper understanding of the flora, fauna, natural history and cultural narrative of the diverse parks of the American West.

**Orbridge**



**Activity Level:** The majority of the program's activities will take place outdoors and a fair amount of walking on varying terrain is to be expected. Many of the parks have dirt trails, but they are usually fairly smooth for walking. Some have paved pathways and boardwalks. It's our expectation that guests are able to walk a mile at a moderate pace, get in and out of a motor coach, and walk up a flight of stairs without assistance. Keep in mind that you will experience varying altitudes, rising up to 9,000 feet, to which you may not be accustomed.

## Accommodations *(subject to change)*

### HOTEL ALEX JOHNSON

This historic hotel features a casual Irish pub, fitness center, café and rooftop bar overlooking town.



### CUSTER STATE GAME LODGE

Set in a beautiful mountain valley, the lodge is listed on the National Register of Historic Places.



### SPEARFISH CANYON LODGE

Nestled alongside spectacular limestone cliffs, the lodge features log walls and a 40-foot stone fireplace.



### HOLIDAY INN CODY-AT BUFFALO BILL VILLAGE

This hotel offers well-appointed rooms with all the comforts of home.



### YELLOWSTONE NATIONAL PARK LODGING

Confirmed by the National Park Service, you'll stay at one or two of the following Yellowstone properties: Old Faithful Inn, Old Faithful Snow Lodge, Canyon Lodge & Cabins, Grant Village or Mammoth Hot Springs Hotel. Each offers comfortable lodging and amenities.

### RUSTIC INN AT JACKSON HOLE CREEKSIDE RESORT AND SPA

This resort offers the finest Western accommodations amidst 12 lush acres and an outdoor pool.



## Optional Post-Tour Jackson Hole

Extend your adventures in the Old West with additional days in Jackson Hole. This charming town offers a sophisticated yet rustic atmosphere with upscale dining, art galleries and a variety of outdoor activities.

**Day 9:** **JACKSON** Gather for a private docent-guided tour of the National Museum of Wildlife Art. Situated on a cliff overlooking the National Elk Refuge, the museum's collection features 5,000 pieces from more than 550 artists. Dating from 2500 B.C. to the present, the exhibits chronicle the history of wildlife in art, focusing primarily on European and American painting and sculpture. The collection of American art from the 19th and 20th centuries is particularly strong, recording European exploration of the American West. Many of these works predate photography, making them vital representations of the frontier era in the history of the U.S.  
Overnight: Rustic Inn at Jackson Hole Creekside Resort and Spa

**Day 10:** **JACKSON** After breakfast set out on a three-hour adventure, beginning at Pritchard Creek, floating past nesting areas of bald eagles and ospreys. Early morning is watering time—and the best viewing time—for native fauna along the river, such as waterfowl, moose, deer and river otters. Have your camera handy to capture the beautiful scenery and active wildlife. The remainder of the day is at leisure to explore downtown Jackson's boutiques and restaurants. Or take advantage of the various amenities at the Rustic Inn's resort and spa.  
Overnight: Rustic Inn at Jackson Hole Creekside Resort and Spa (B)

**Day 11:** **DEPART FOR JACKSON** After breakfast guests departing during the suggested times take a complimentary transfer to the airport for flights home. (B)

## What's Included

- 2 nights at Rustic Inn at Jackson Hole Creekside Resort & Spa (or similar) including breakfast each morning
- Admission to the National Museum of Wildlife Art including a docent-led tour
- A half-day scenic Snake River float trip
- Transportation for included activities
- Luggage portage
- Airport transfers for guests departing during the suggested times



# NATIONAL PARKS & LODGES OF THE OLD WEST

JULY 25 - AUGUST 2, 2025

Jackson Hole Post-Tour: August 2-4, 2025

Standard  
Rate:

~~\$6,199~~

~~\$8,099~~ Single

Special  
Rate:

**\$5,695\***

\$7,595 Single

Jackson Hole Post-Tour\*

Double: \$1,295 | Single: \$1,895

Rates are per person based on double occupancy except where noted as Single, in U.S. dollars.

## Reserve by Credit Card:

Online: [ku.orbridge.com](https://ku.orbridge.com)

Phone: (866) 639-0079

Fax: (206) 452-5655

## Reserve by Check:

Made payable to **Orbridge, LLC**

Mail to: Orbridge, P.O. Box 1376

Poulsbo, WA 98370

## GUEST INFORMATION:

Guest #1 Name (Title/Salutation): \_\_\_\_\_

Email: \_\_\_\_\_ Class Year: \_\_\_\_\_

Home Phone: \_\_\_\_\_ Alt. Phone: \_\_\_\_\_

Address: \_\_\_\_\_

City: \_\_\_\_\_ State: \_\_\_\_\_ Zip: \_\_\_\_\_

Guest #2 Name (Title/Salutation): \_\_\_\_\_

Email: \_\_\_\_\_ Class Year: \_\_\_\_\_

Home Phone: \_\_\_\_\_ Alt. Phone: \_\_\_\_\_

## DEPOSIT PAYMENT:

Check  ACH (Automated Clearing House)  MasterCard/Visa  American Express  Discover

Card #: \_\_\_\_\_ Exp. Date: \_\_\_\_\_ CVV: \_\_\_\_\_

Name (as printed on card): \_\_\_\_\_

Billing Address (if different from above): \_\_\_\_\_

City: \_\_\_\_\_ State: \_\_\_\_\_ Zip: \_\_\_\_\_


## DEPOSIT:

# \_\_\_\_\_ guests joining program (\$850/person) +

# \_\_\_\_\_ guests joining post-tour (\$500/person) = **TOTAL DEPOSIT: \$** \_\_\_\_\_

I/we have read, understand, and agree to the full Terms & Conditions at [terms.orbridge.com](https://terms.orbridge.com); and I/we agree that Orbridge, LLC is authorized to charge my credit card above and/or take my/our deposit for this program.

Signature: \_\_\_\_\_ Date: \_\_\_\_\_

 Orbridge takes seriously the responsibility to minimize our global environmental impact. Each year we plant 100,000 trees in U.S. State Forests with afforestation needs as an ongoing initiative among our evolving sustainability efforts. Learn more at [orbridge.com/going-green](https://orbridge.com/going-green).

\*Special group rate; limited offer. Airfare not included. Single availability limited. \*\*A complement to the educational component of this journey, Expedition Libraries are curated collections of useful resources and background reading tailored to this program. Place your deposit on or before the specified date, and one Expedition Library per household will be sent after receipt of final payment. Libraries may be purchased; please call for details.

CUT HERE



# NATIONAL PARKS & LODGES OF THE OLD WEST

JULY 25 - AUGUST 2, 2025

KU Alumni Association  
1266 Oread Ave.  
Lawrence, KS 66045

Special Alumni Rate:

Save more than \$1,000 <sup>per couple</sup>

**30-day refund guarantee**

## What Guests Are Saying...

*We are already contemplating our next travel opportunity with Orbridge. Honestly, my husband does not typically like to travel but he is absolutely SOLD on signing up for another excursion. Thank you for doing such a great job and impressing him to that extent! There's so much more we'd like to see out there with Orbridge leading the way!*  
~Sue & Lee G., Glastonbury, CT

For questions/information on the Flying Jayhawks program, please call 800-584-2957 or visit [kualumni.org/flyingjayhawks](http://kualumni.org/flyingjayhawks).

Sponsored by the KU Alumni Association.

Travel with the Flying Jayhawks is a benefit of membership in the KU Alumni Association. If you are not a member, a \$60 annual membership fee will be invoiced to you by KUAA.

**FREE EXPEDITION LIBRARY**  
AN EXCLUSIVE EARLY  
RESERVATION BONUS

Reserve by

**December 27, 2024\*\***

PSRRT-STD  
U.S. POSTAGE  
PAID  
PERMIT NO. 825  
SAN DIEGO, CA