

**RD**  
DANCE

COSTUMES & UNIFORM



2024 RD ESSENTIALS CATALOGUE

RDDANCECOSTUMES.CO.UK

# R D E S S E N T I A L S

B U D G E T U N I F O R M R A N G E

1.

## SELECT YOUR GARMENT

Browse our catalogue and create your schools own collection, prices for our essentials range start from as little as £10!

2.

## CHOOSE YOUR COLOUR

We have wide range of colours to choose from, please see next page for an idea of the colours we offer, we are certain we will have a fabric that matches your schools colours.

3.

## ADD YOUR LOGO

Logo printing is available on the majority of our uniform.

4.

## PERSONALISE

\*Selected garments only

Choose your fabric colour

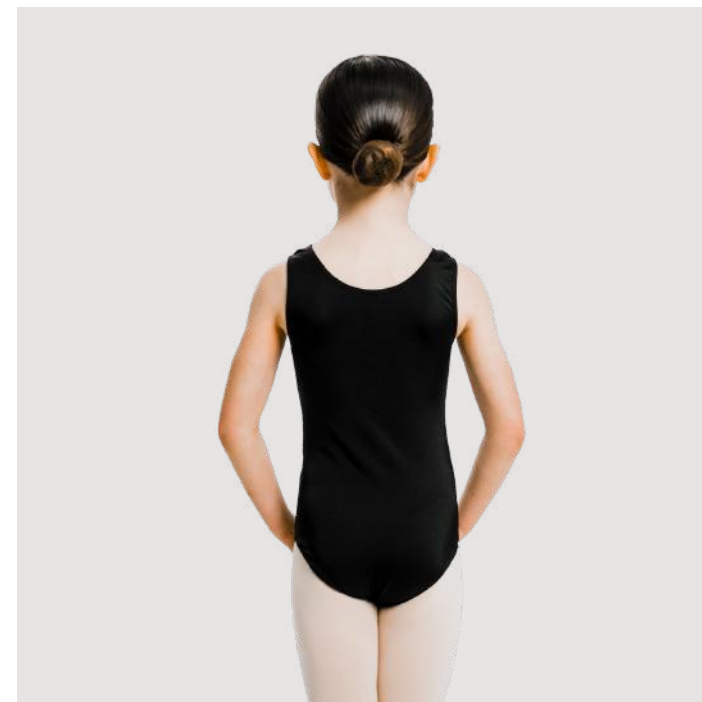
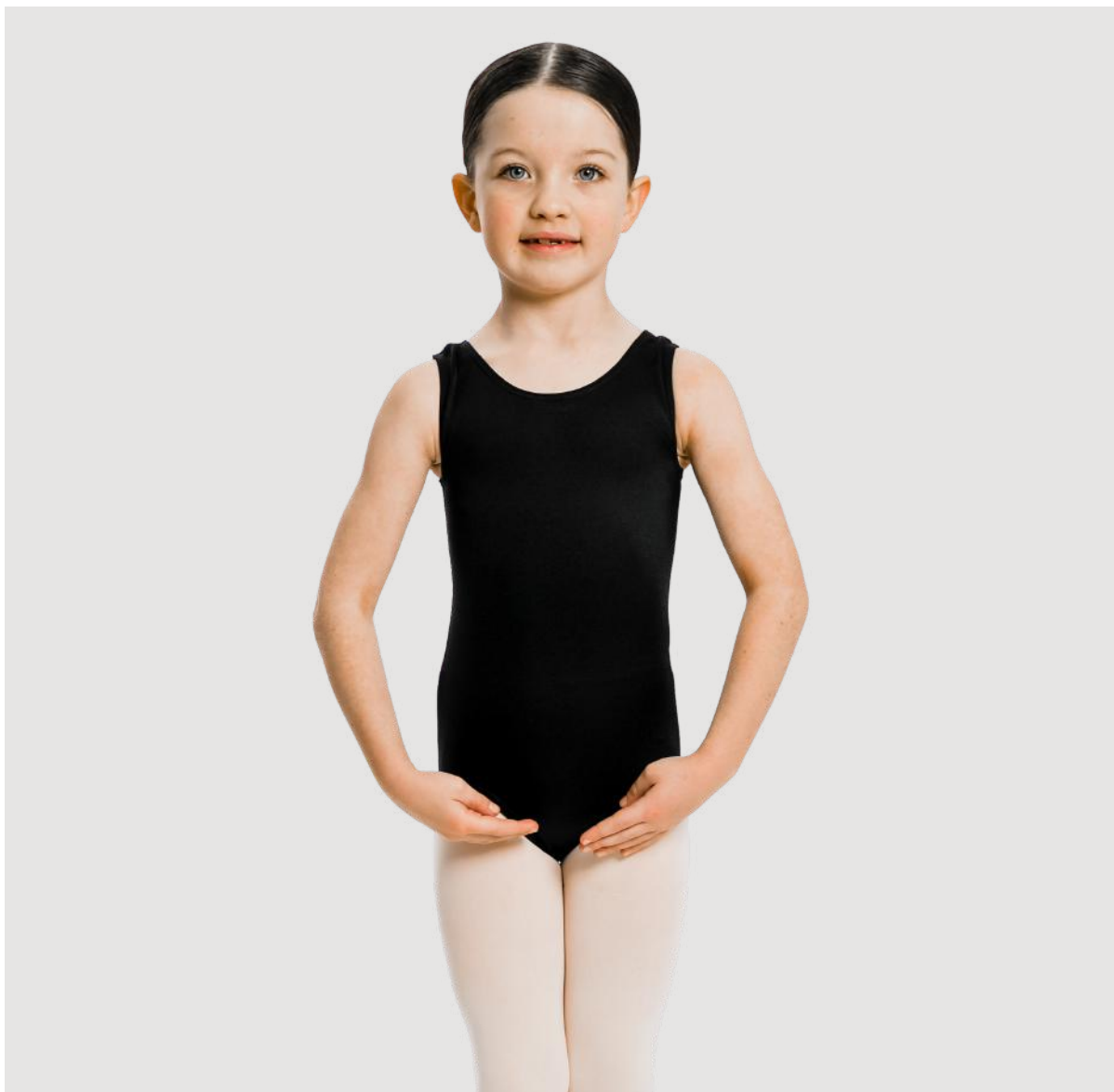
Add your logo



# F A B R I C   C O L O U R S

Our RD essentials uniform is made from the highest quality nylon/elastane, we have hundreds of colours to choose from, below is just a small selection of what we have to offer. No minimum order quantities.

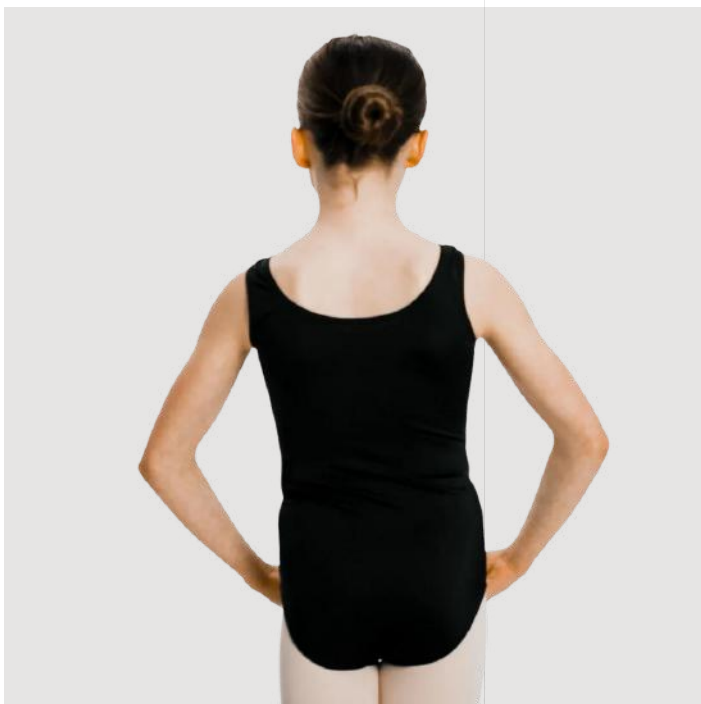




## **VEST LEOTARD**

ES001

- Classic tank leotard
- Unlined
- 80% Nylon 20% Elastane
- Manufactured in the UK
- Choose your colour
- Logo printing available
- Children & adults sizes



## **RUCHED VEST LEOTARD**

ES002

- Classic sleeveless ruched front leotard
- Unlined
- 80% Nylon 20% Elastane
- Manufactured in the UK
- Choose your colour
- Logo printing available
- Children & adults sizes

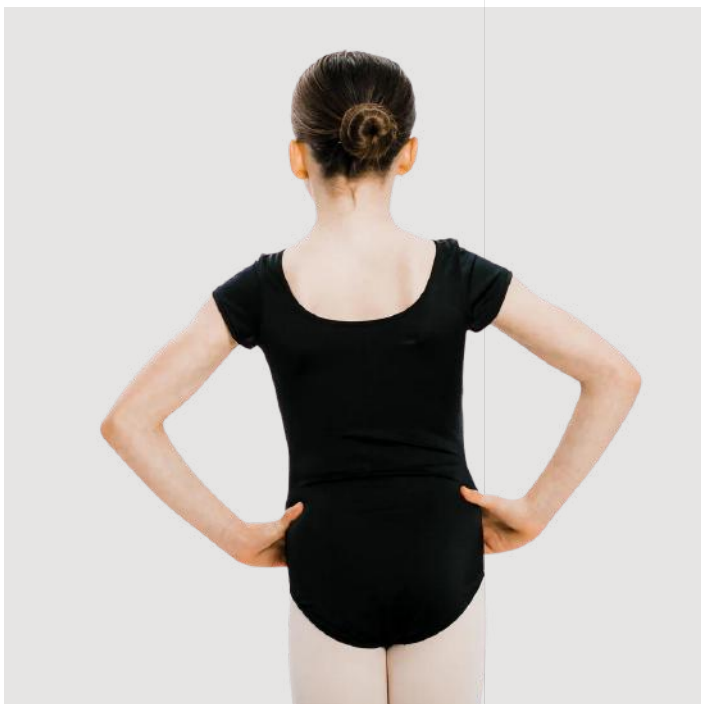




## SKIRTED VEST LEOTARD

ES003

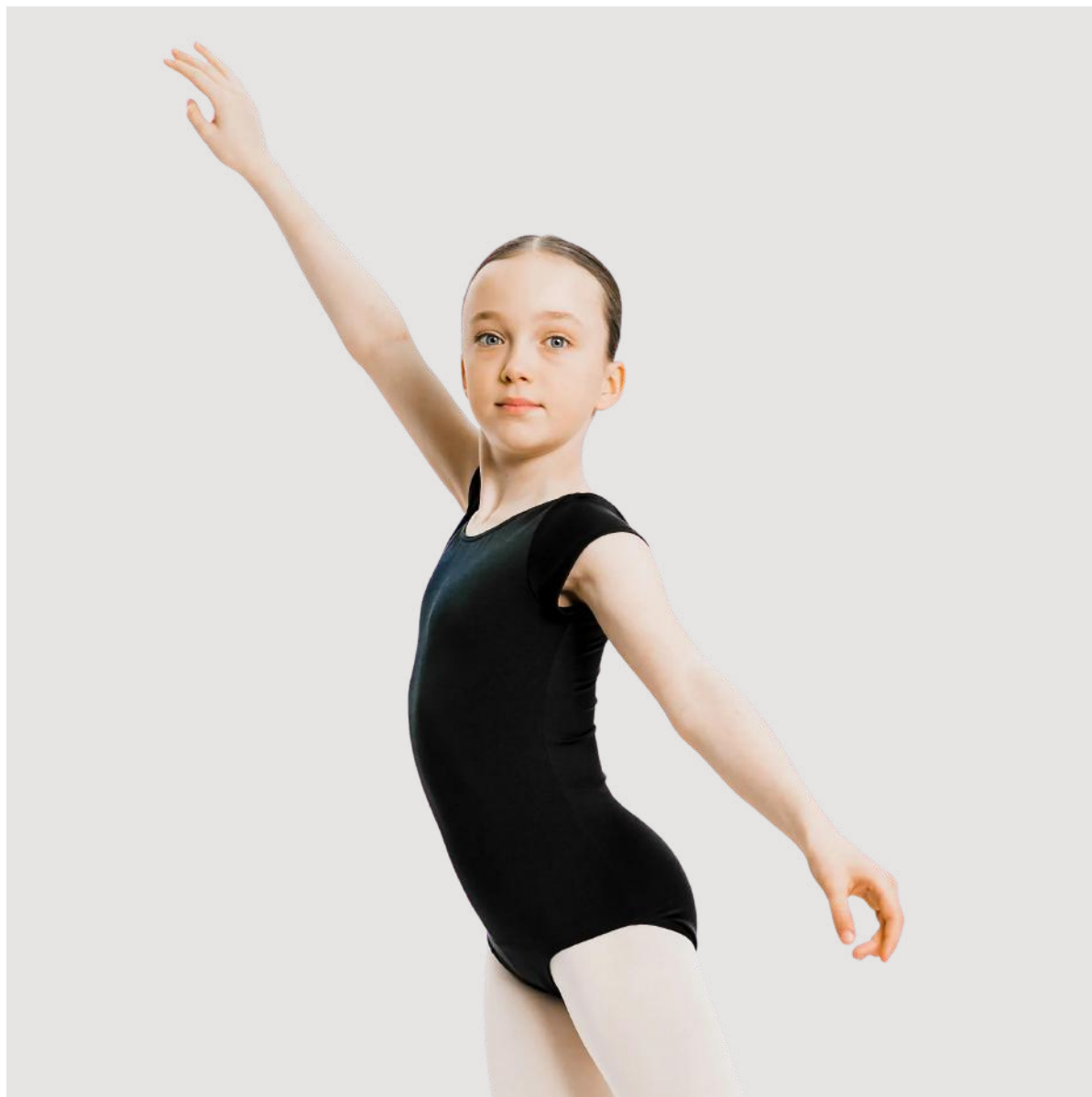
- Vest leotard with attached mesh skirt
- Unlined
- 80% Nylon 20% Elastane
- Manufactured in the UK
- Choose your colour
- Logo printing available
- Children & adults sizes

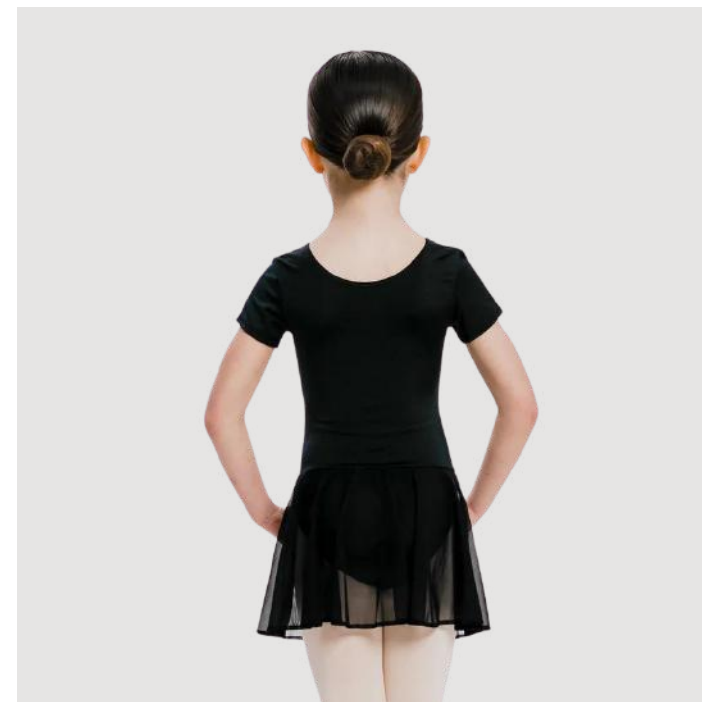
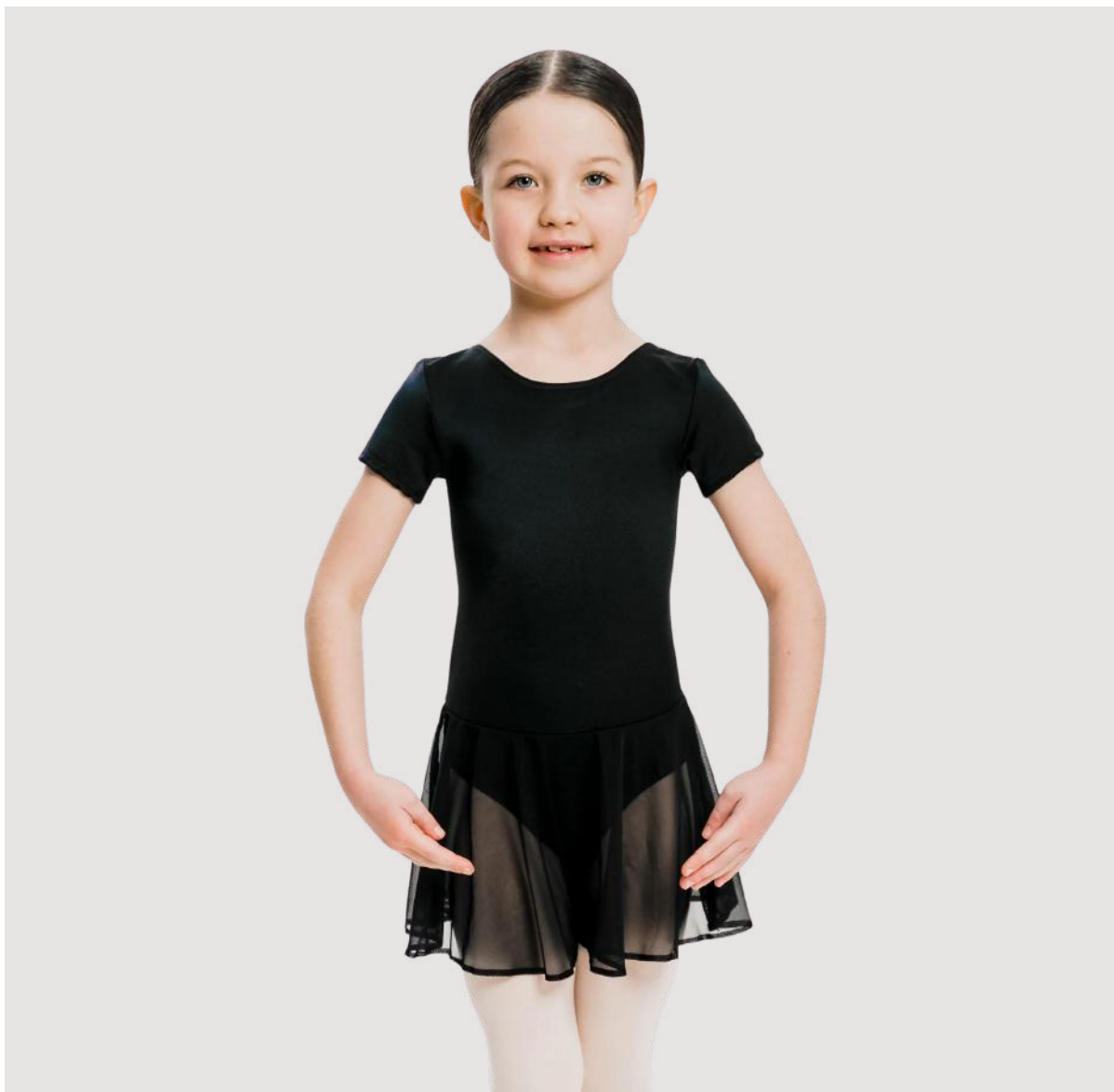


## SHORT SLEEVED LEOTARD

ES004

- Classic short sleeved leotard
- Unlined
- 80% Nylon 20% Elastane
- Manufactured in the UK
- Choose your colour
- Logo printing available
- Children & adults sizes



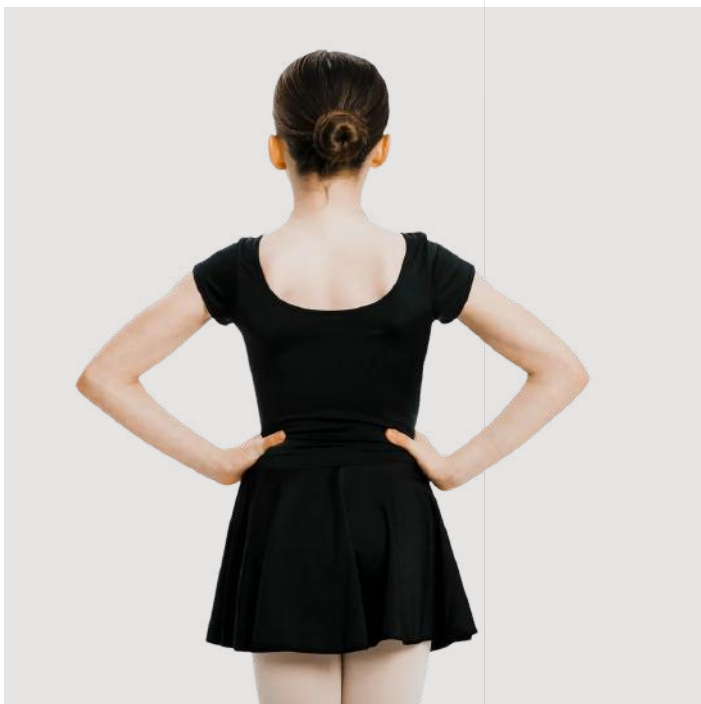


## **SKIRTED SHORT SLEEVED LEOTARD**

ES005

- Short sleeved leotard with attached mesh skirt
- Unlined
- 80% Nylon 20% Elastane
- Manufactured in the UK
- Choose your colour
- Logo printing available
- Children & adults sizes

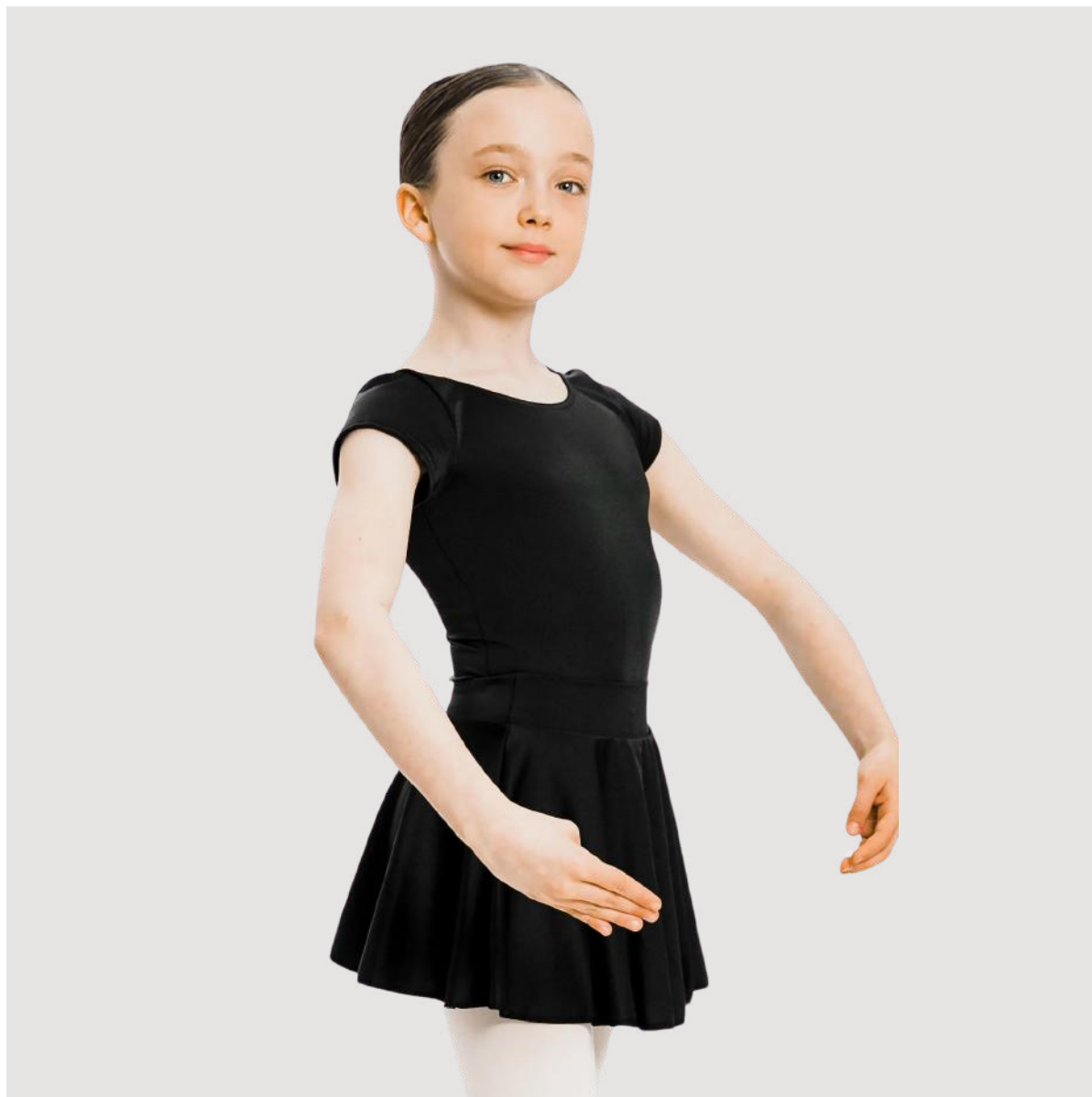


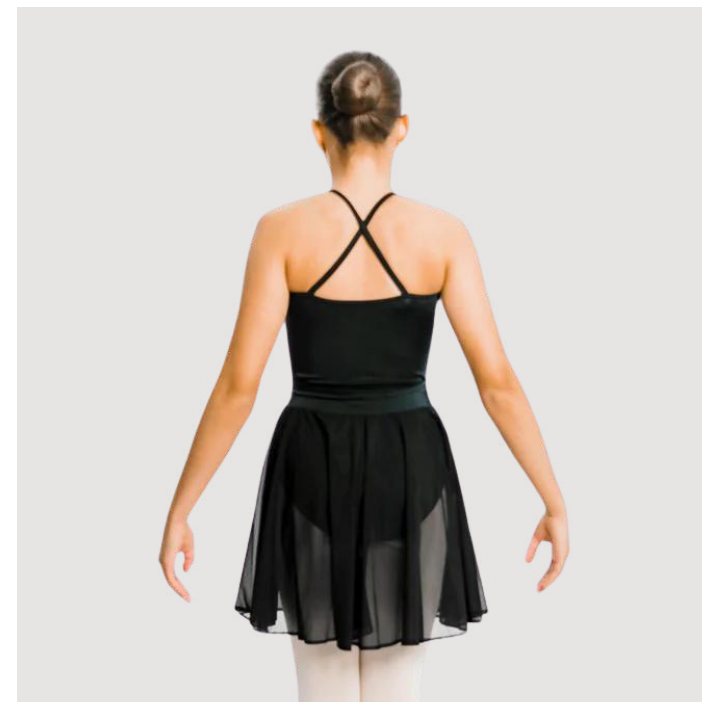


## **PULL ON CIRCULAR SKIRT**

ES006

- Pull on circular skirt
- 80% Nylon 20% Elastane
- Manufactured in the UK
- Choose your colour
- Children & adults sizes
- Leotard not included

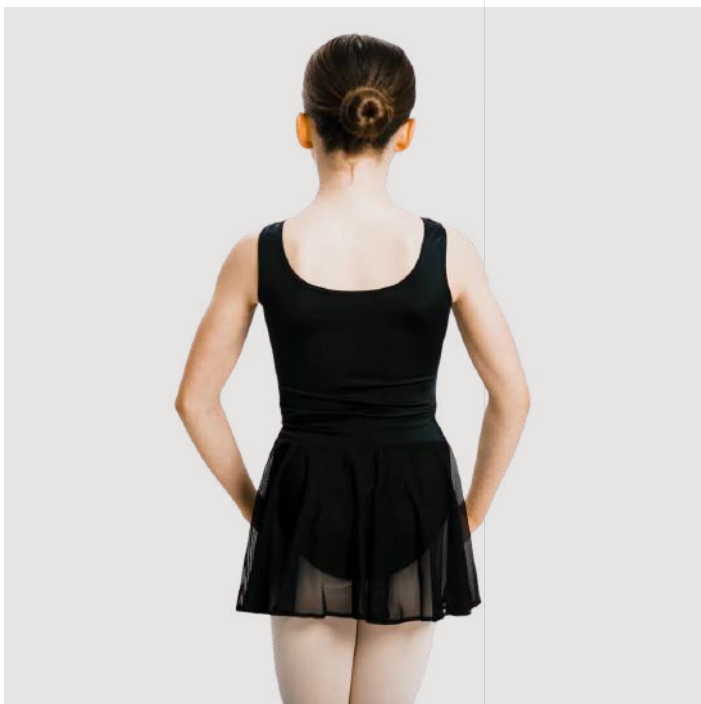




## **MESH CROSS OVER SKIRT**

ES007

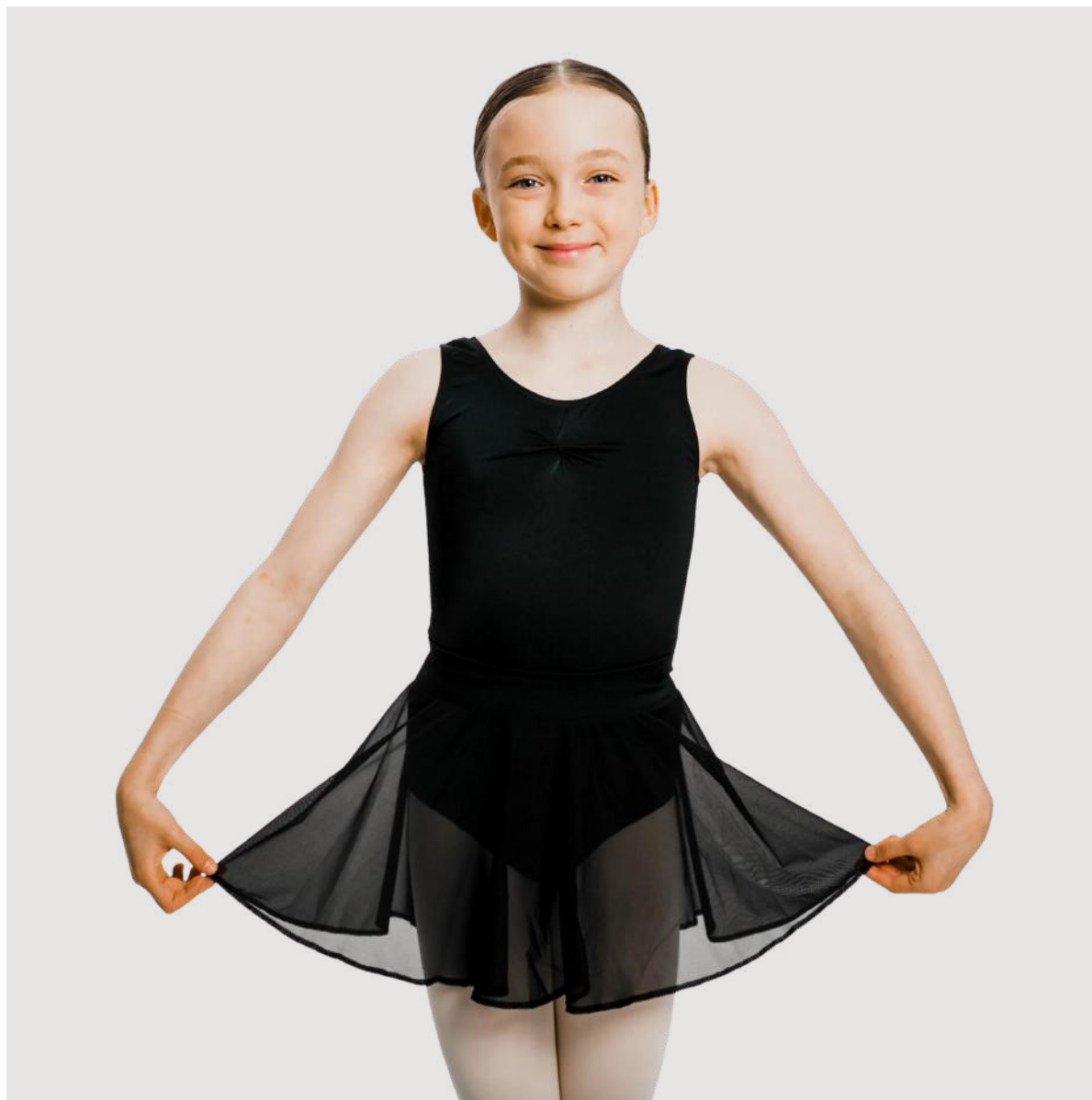
- Pull on mesh cross over skirt
- 80% Nylon 20% Elastane band - Mesh skirt
- Manufactured in the UK
- Choose your colour
- Children & adults sizes
- Leotard not included

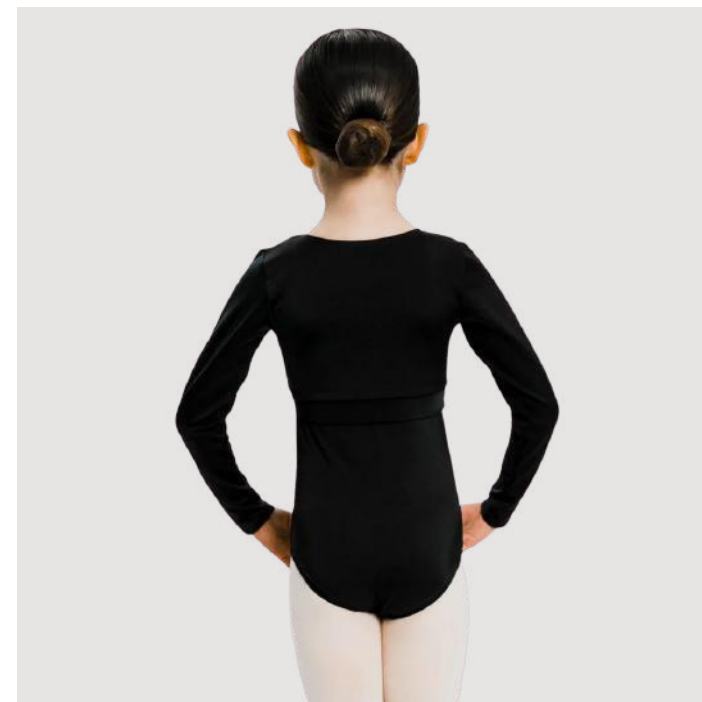


## MESH PULL ON SKIRT

ES008

- Pull on mesh circular skirt
- 80% Nylon 20% Elastane band - Mesh skirt
- Manufactured in the UK
- Choose your colour
- Children & adults sizes
- Leotard not included

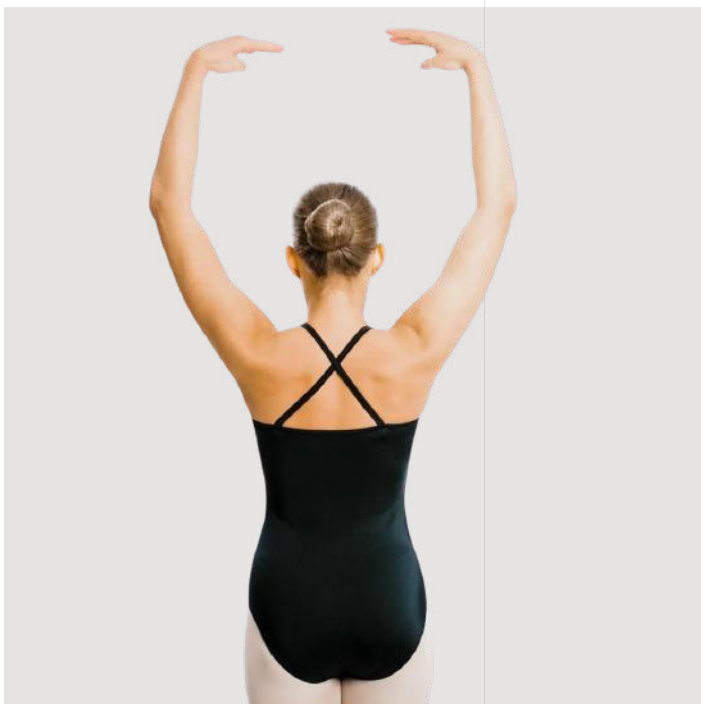




## **WRAP OVER CARDIGAN**

ES009

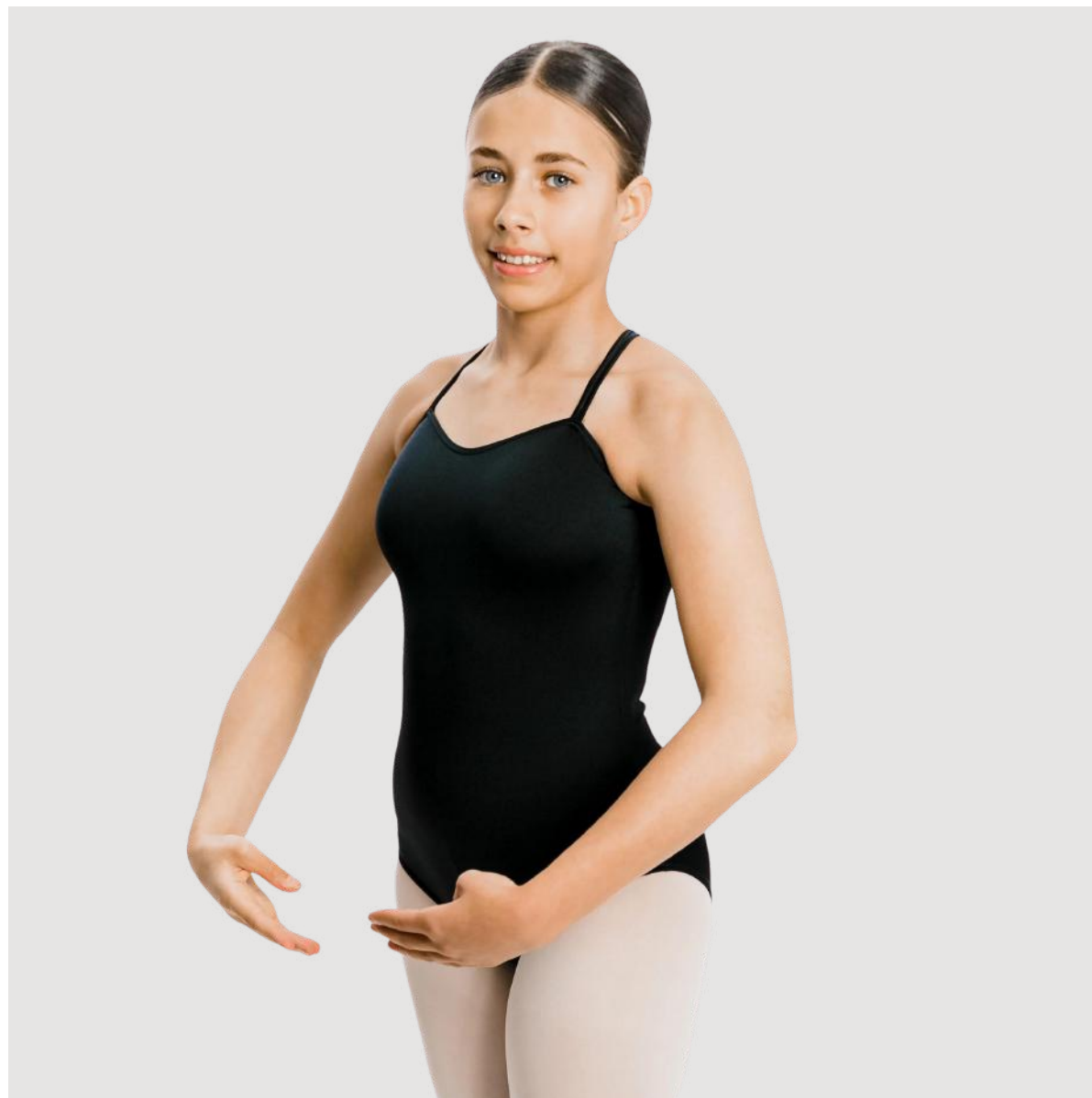
- Pull on wrap over cardigan
- 80% Nylon 20% Elastane band
- Manufactured in the UK
- Choose your colour
- Logo printing and personalisation available
- Children & adults sizes
- Leotard not included



## **CAMISOLE CROSS BACK LEOTARD**

ES010

- Camisole leotard with cross back straps
- Unlined
- 80% Nylon 20% Elastane
- Manufactured in the UK
- Choose your colour
- Logo printing available
- Children & adults sizes

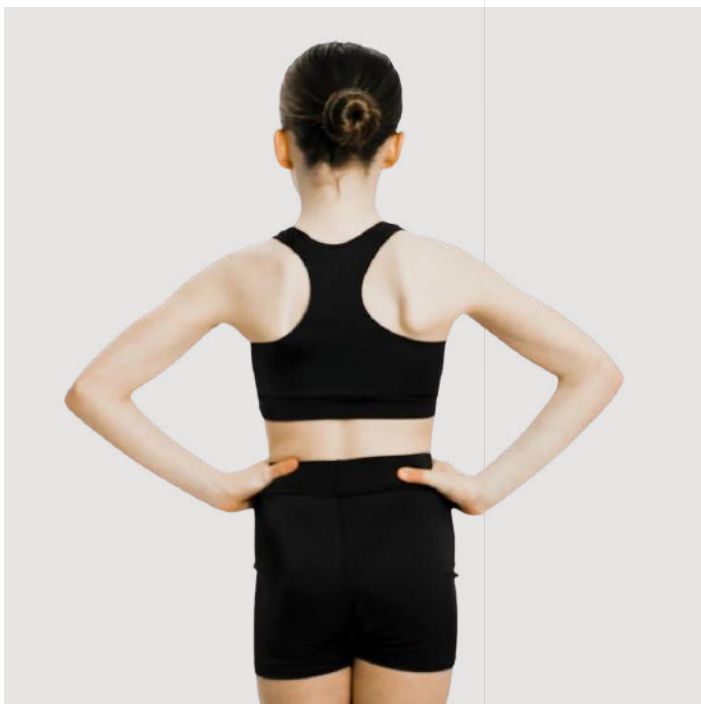




## **HIGH NECK SLEEVELESS LEOTARD**

ES011

- High neck sleeveless leotard with keyhole back
- Unlined
- 80% Nylon 20% Elastane
- Manufactured in the UK
- Choose your colour
- Logo printing available
- Children & adults sizes



## **CROP TOP - RACER BACK**

ES012

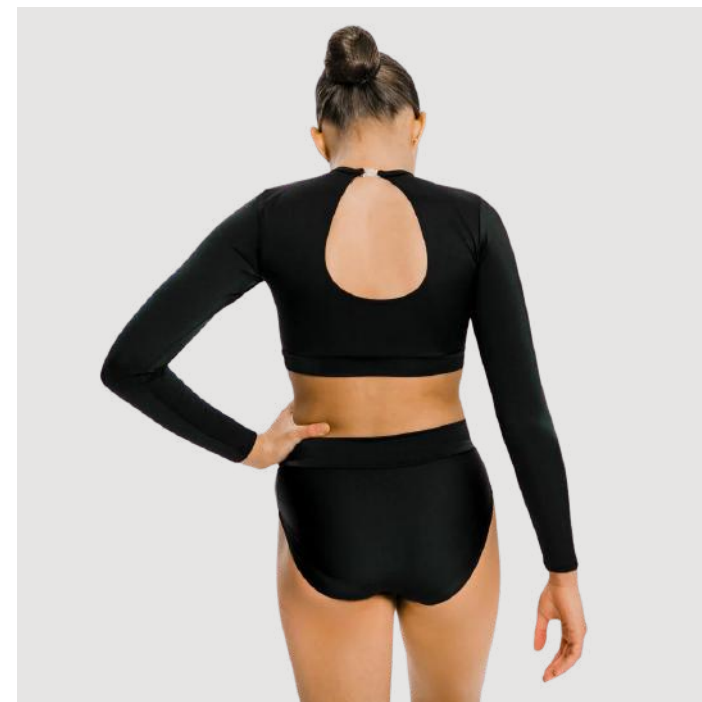
- Front lined
- 80% Nylon 20% Elastane

## **SHORTS**

ES016

- 80% Nylon 20% Elastane
- Choose your colour
- Logo printing available
- Children & adults sizes





## **CROP TOP - LONG SLEEVED**

ES013

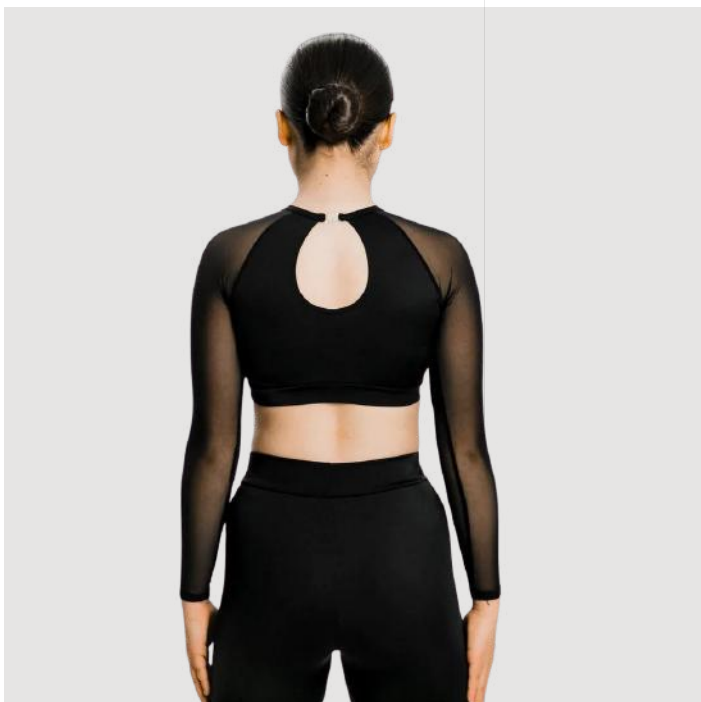
- Front lined
- 80% Nylon 20% Elastane

## **DANCE PANTS**

ES034

- 80% Nylon 20% Elastane
  
- Choose your colour
- Logo printing available
- Children & adults sizes





## MESH SLEEVED RAGLAN CROP TOP

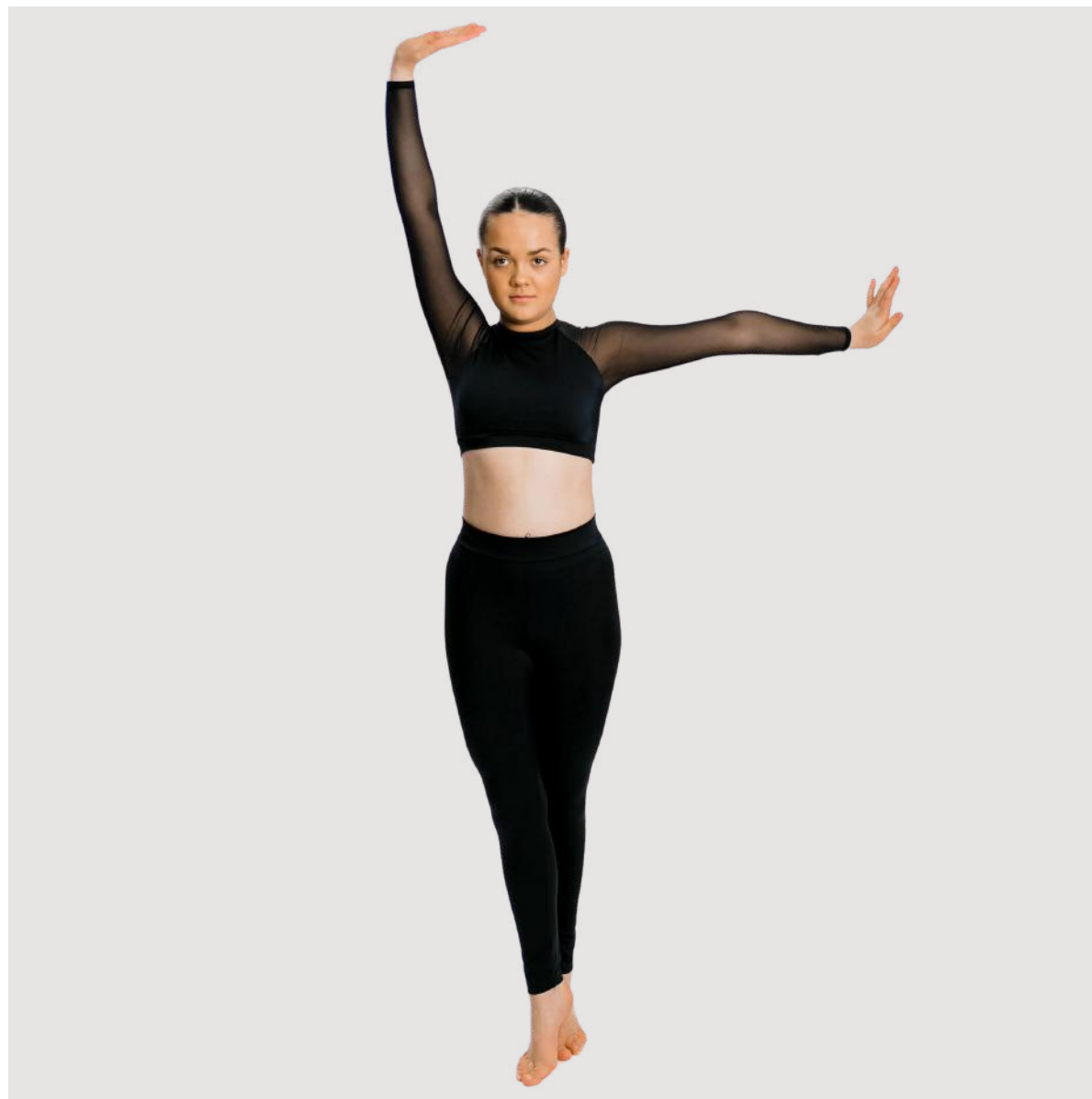
ES030

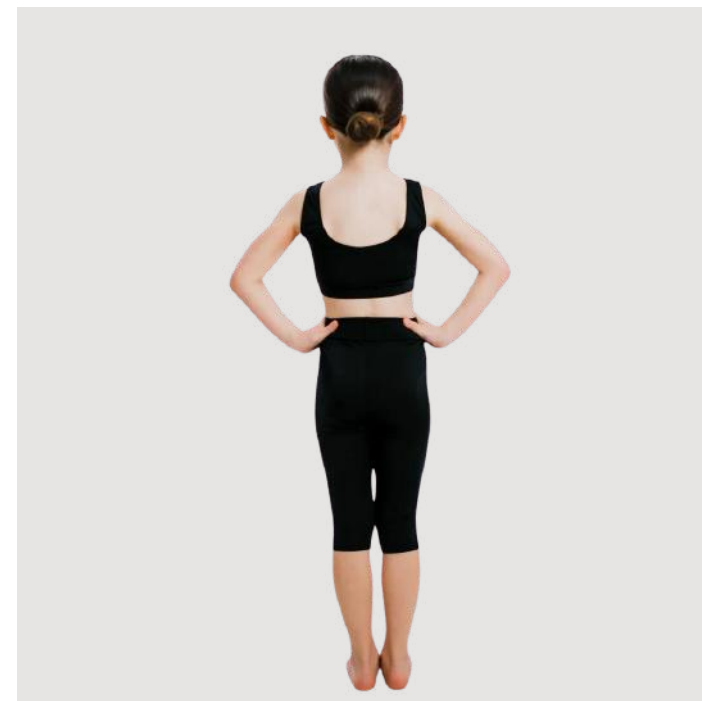
- Long mesh sleeved crop top with keyhole back
- Front lined
- 80% Nylon 20% Elastane

## LEGGINGS - LONG

ES014

- 80% Nylon 20% Elastane
- Choose your colour
- Logo printing available
- Children & adults sizes





## **LINED CROP TOP**

ES029

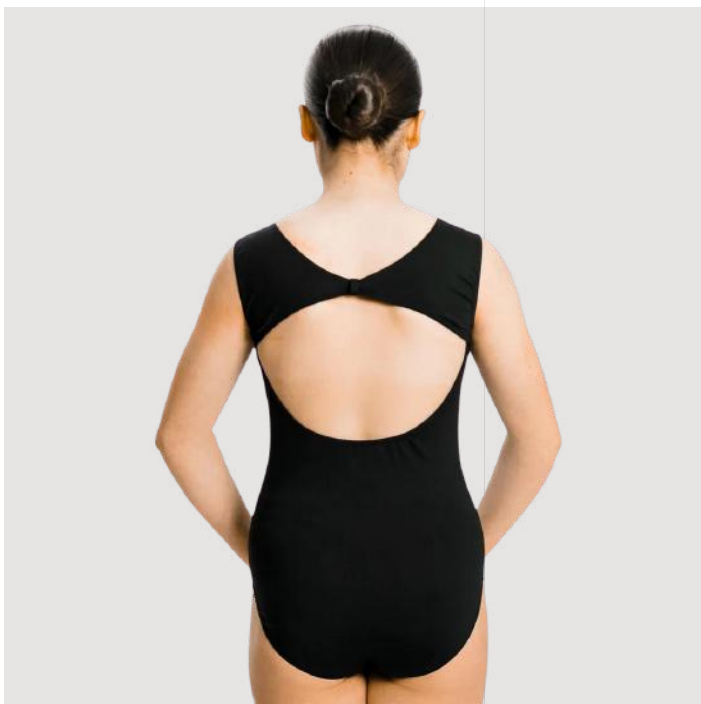
- Front lined
- 80% Nylon 20% Elastane

## **LEGGINGS - CAPRI**

ES015

- 80% Nylon 20% Elastane

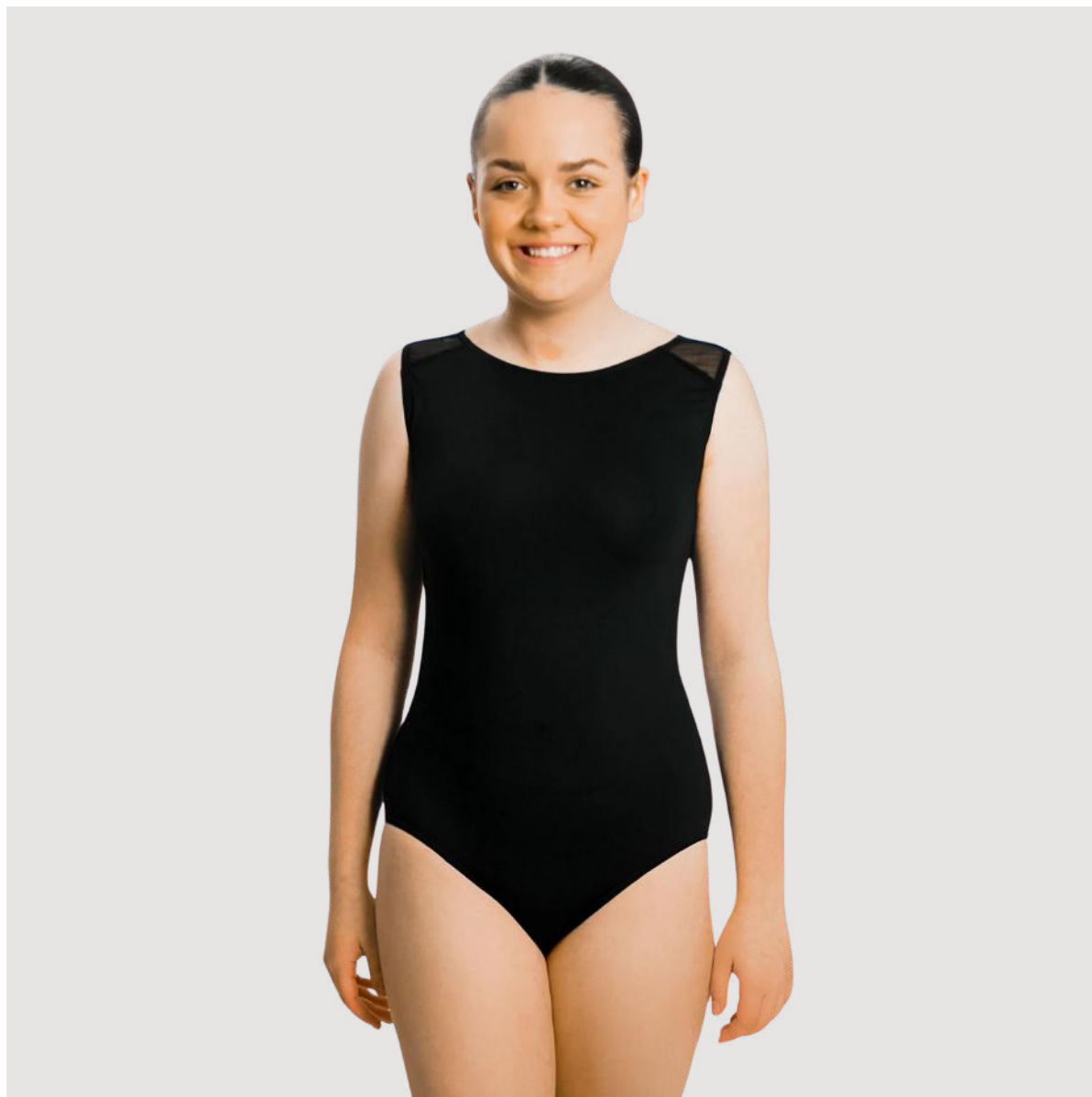
- Choose your colour
- Logo printing available
- Children & adults sizes

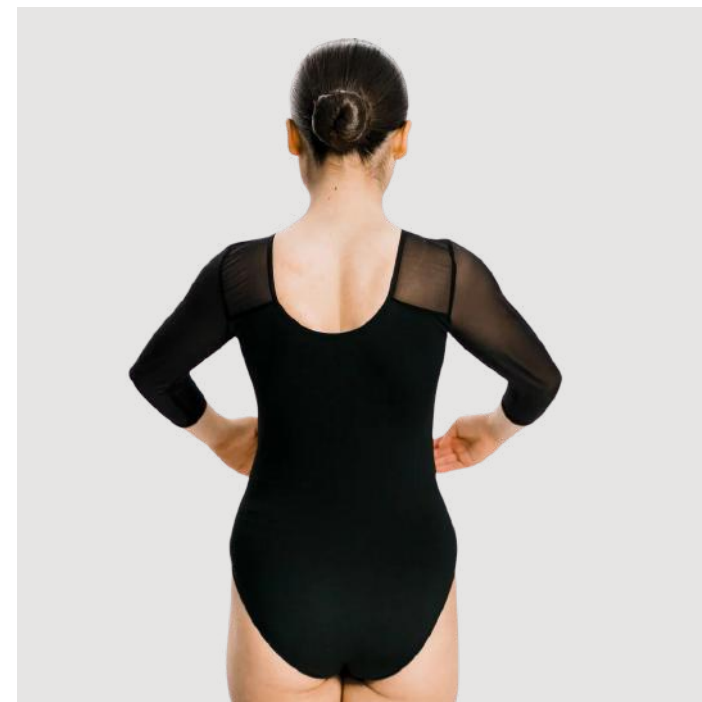
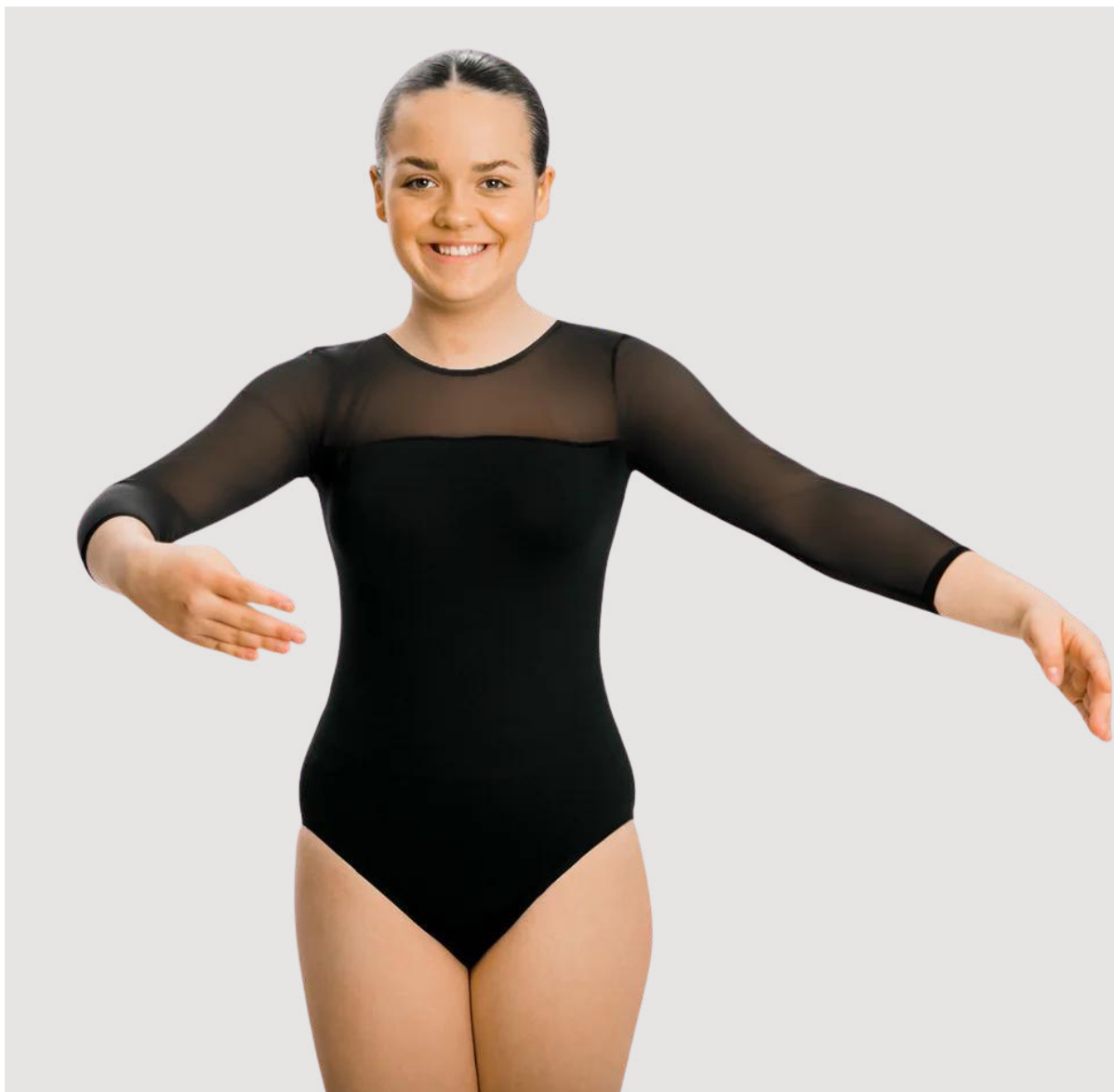


## MESH BINDING LEOTARD

ES021

- Leotard with mesh shoulder inserts
- Back strap with binding detail
- Unlined
- Matt lightweight fabric
- Manufactured in the UK
- Available in black only
- Logo printing available
- Children & adults sizes

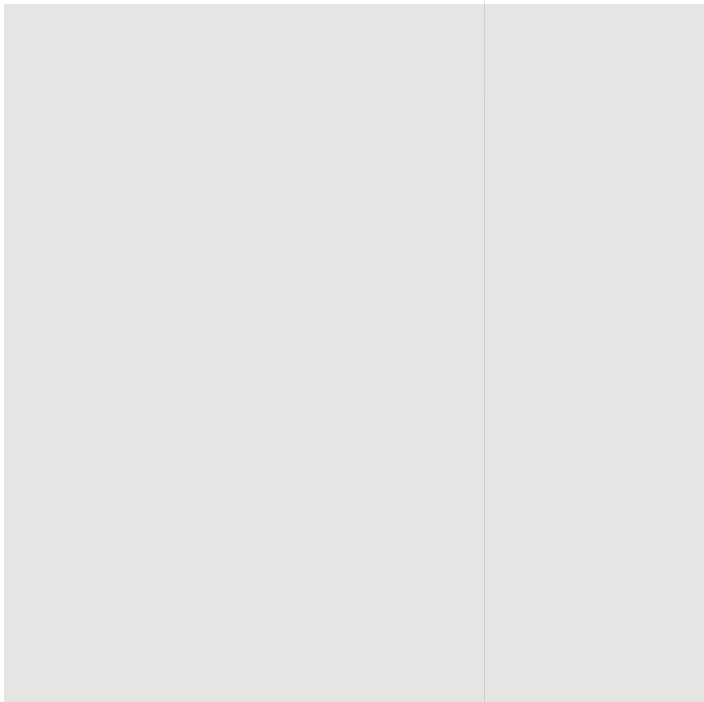




## **3/4 MESH SLEEVE LEOTARD**

ES020

- Leotard with mesh 3/4 length sleeves
- Unlined
- Matt lightweight fabric
- Manufactured in the UK
- Available in black only
- Logo printing available
- Children & adults sizes

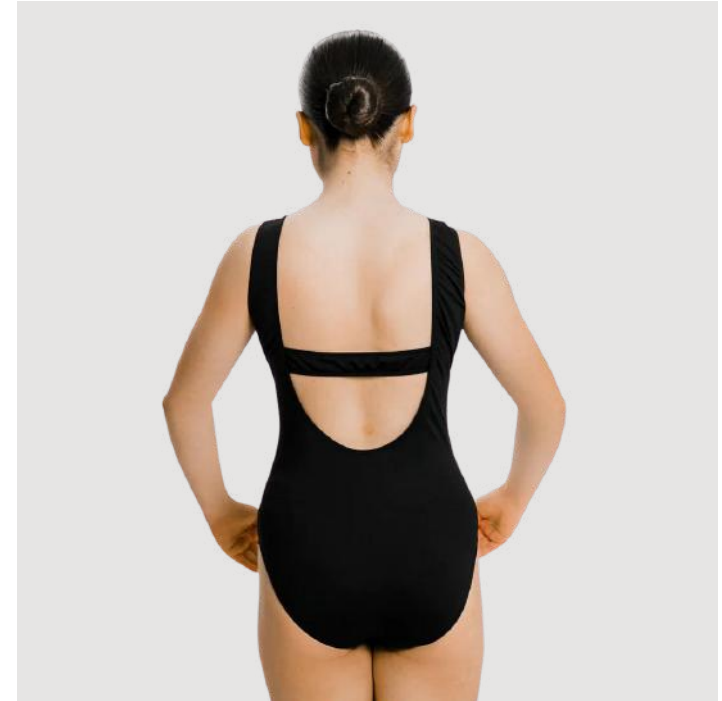


## HIGH NECK MESH LEOTARD

ES023

- Sweetheart leotard with mesh inserts and keyhole back
- Unlined
- Matt lightweight fabric
- Manufactured in the UK
- Available in black only
- Logo printing available
- Children & adults sizes

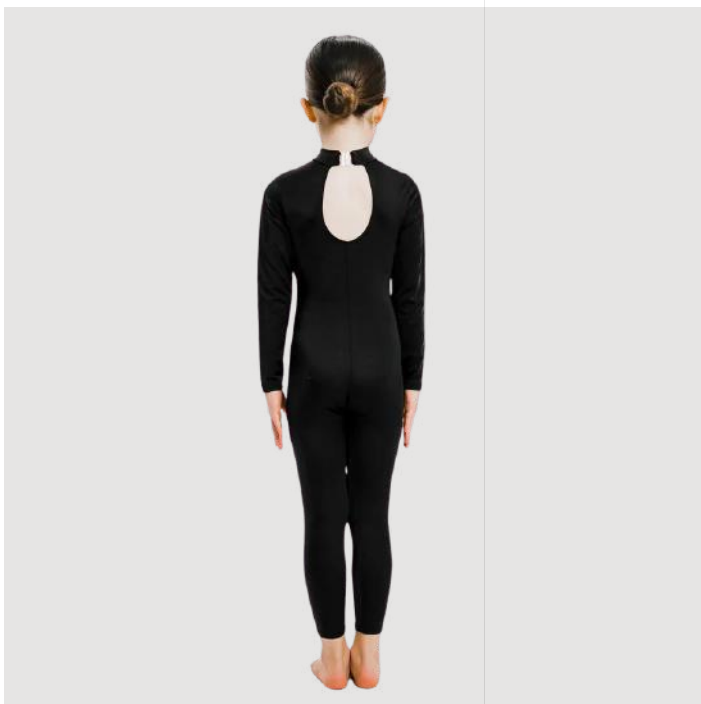




## **BACK STRAP LEOTARD**

ES022

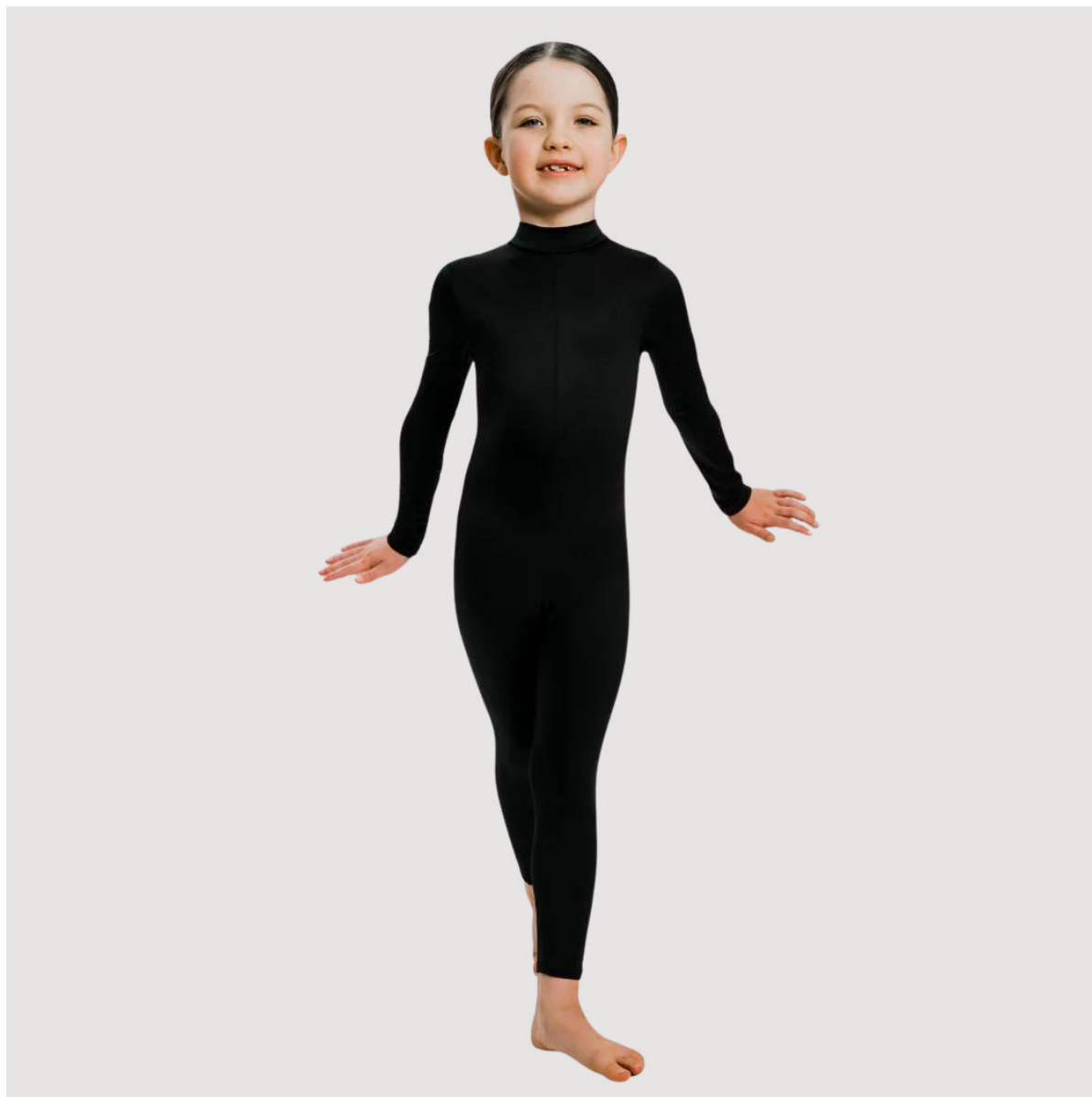
- Vest leotard with low back and back strap detail
- Unlined
- Matt lightweight fabric
- Manufactured in the UK
- Available in black only
- Logo printing available
- Children & adults sizes

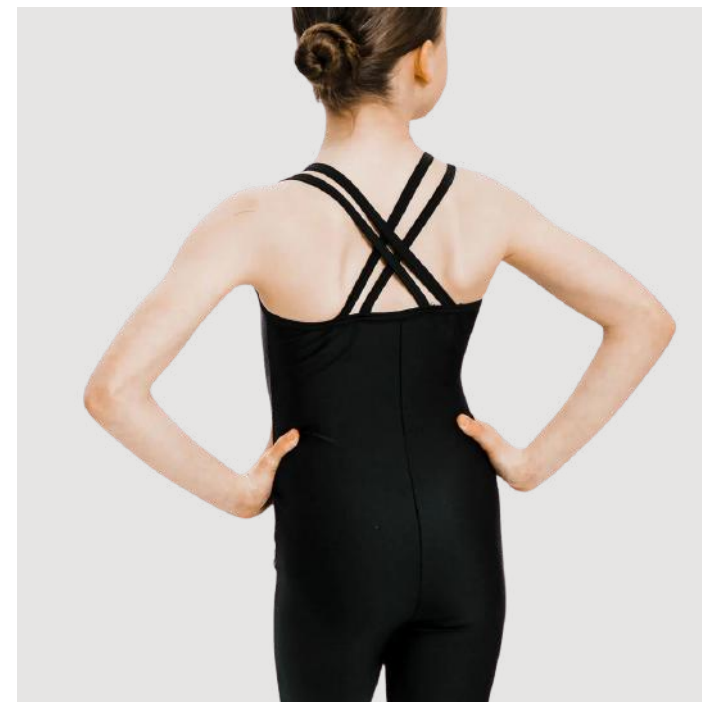
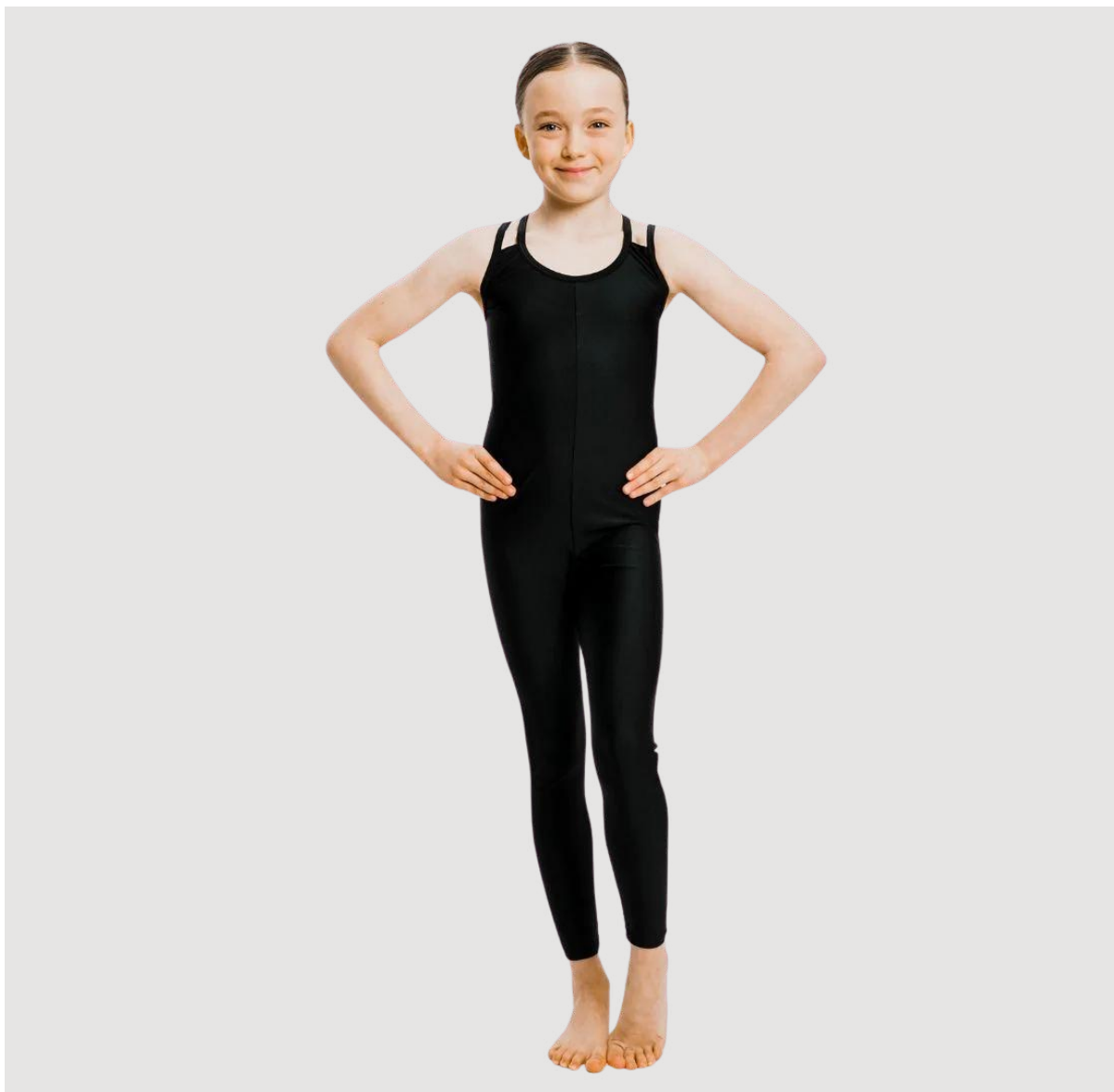


## HIGH NECK CATSUIT

ES017

- Long sleeved, high neck catsuit with keyhole back
- Unlined
- 80% Nylon 20% Elastane
- Manufactured in the UK
- Choose your colour
- Logo printing available
- Children & adults sizes



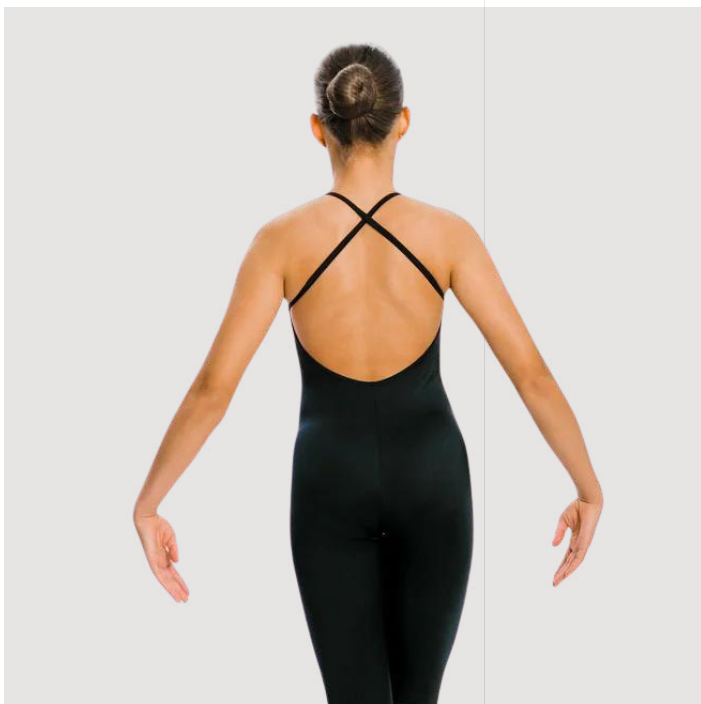


## **DOUBLE CROSS BACK CATSUIT**

ES018

- Full length catsuit with double strap cross detail
- 80% Nylon 20% Elastane
- Manufactured in the UK
- Choose your colour
- Logo printing available
- Children & adults sizes



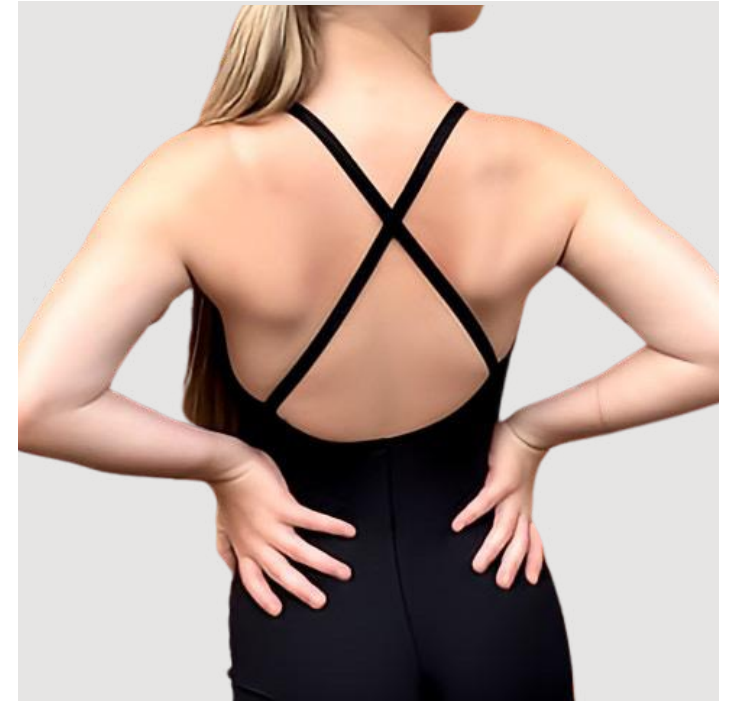


## CROSS BACK LOW BACK CATSUIT

ES019

- Low back full catsuit with single cross strap detail
- Unlined
- 80% Nylon 20% Elastane
- Manufactured in the UK
- Choose your colour
- Logo printing available
- Children & adults sizes

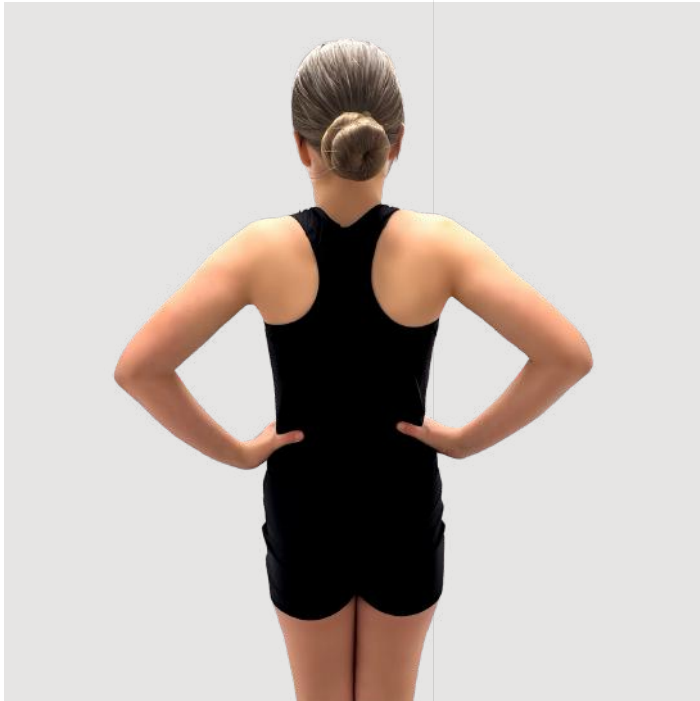




## **LOW BACK UNITARD**

U11103UNI

- Low back cross strap unitard
- Matt lightweight fabric
- Choose your colour
- Logo printing available
- Children & adult sizes

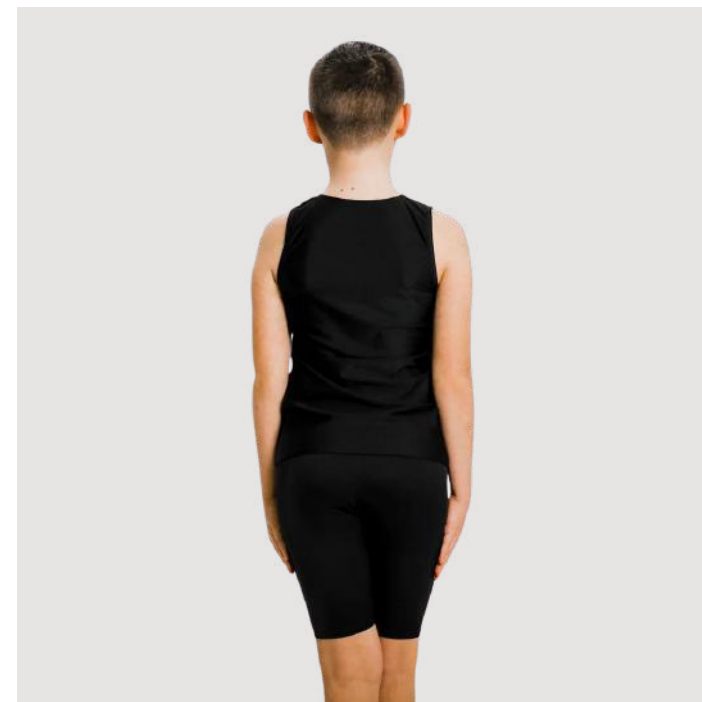
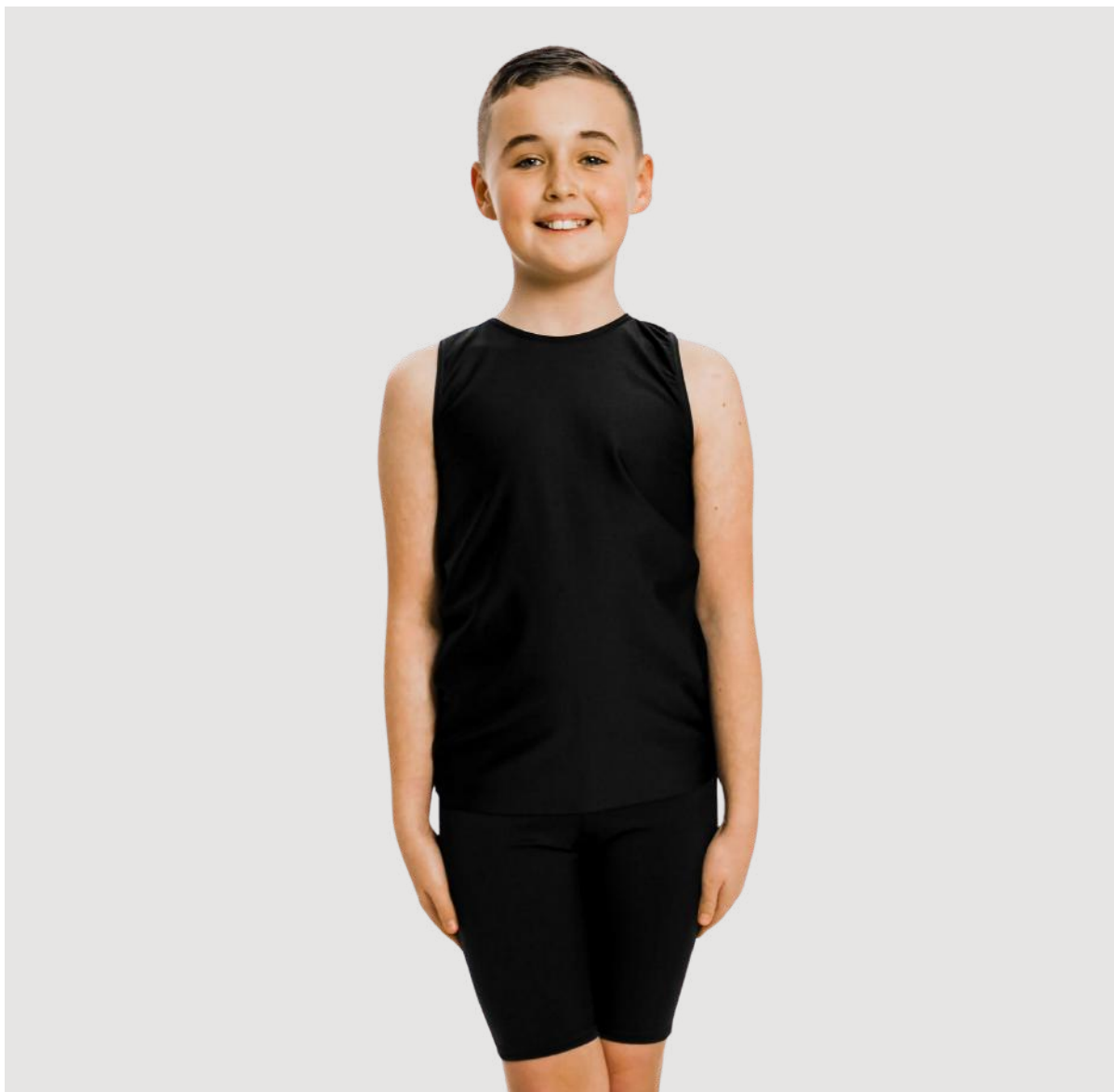


## **RACER BACK ZIP UNITARD**

U6740

- Racer back unitard with 3/4 zip front
- Matt lightweight fabric
- Choose your colour
- Logo printing available
- Children & adult sizes





## **BOYS VEST**

ES025

- Unlined

## **BOYS CYCLE SHORTS**

ES024

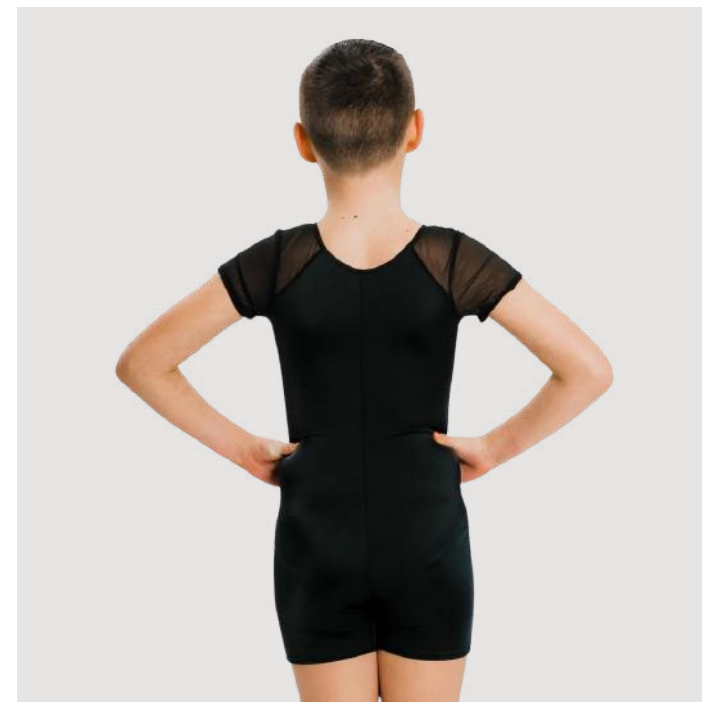
- 80% Nylon 20% Elastane
- Manufactured in the UK
- Choose your colour
- Logo printing available
- Children & adults sizes

## BOYS T-SHIRT

ES026

- 80% Nylon 20% Elastane
- Manufactured in the UK
- Choose your colour
- Logo printing and personalisation available
- Children & adults sizes

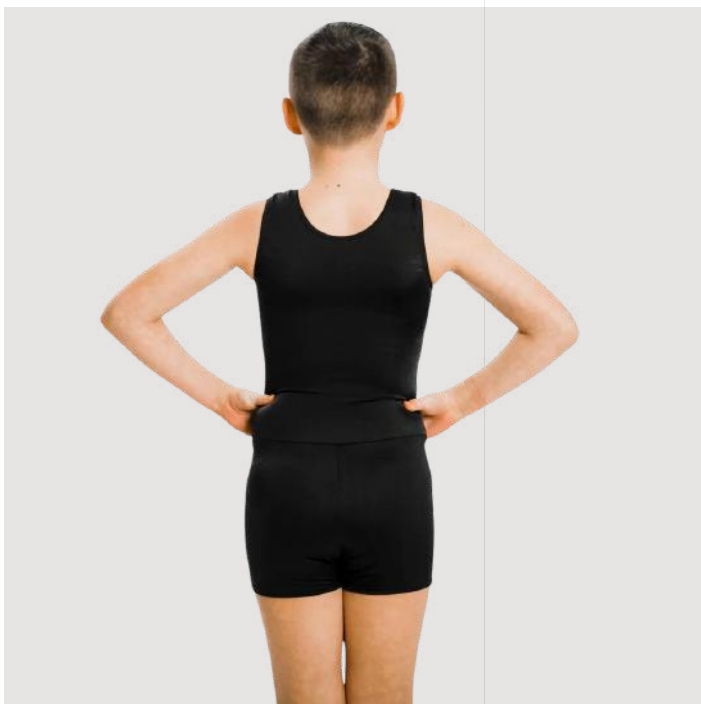




## **BOYS SHORT SLEEVED MESH UNITARD**

ES027

- Boys mesh raglan sleeved unitard
- 80% Nylon 20% Elastane
- Manufactured in the UK
- Choose your colour
- Logo printing available
- Children & adults sizes



## BOYS VEST UNITARD

ES028

- 80% Nylon 20% Elastane
- Manufactured in the UK
- Choose your colour
- Logo printing available
- Children & adults sizes



## **Can't find what you are looking for?**

Contact us via email [info@rddance.co.uk](mailto:info@rddance.co.uk) and we will try our best to help.

## **Logo/branding**

We can print and personalise garments in our on site print department

## **Personalisation**

Many products can also be personalised

## **Online Uniform Order Portals**

We have recently launched our online uniform order portals. We create a password protected webpage for your students to order direct from us, giving you the chance to focus on teaching. Optional commission can also be added. Register your interest when enquiring.



# P R I N T I N G



## **Logo/branding**

We can print garments in our on site print department in a wide range of colours. Plain, glitter & hologram vinyl available.

## **Personalisation**

Personalisation can be added on selected garments.

**RD**  
DANCE  
**RD**

C O S T U M E S & U N I F O R M



M E R C H A N D I S E C A T A L O G U E

R D D A N C E C O S T U M E S . C O . U K

# NEW MERCHANDISE

## LOGO/BRANDING

We can print your logo in our on site print department

## PERSONALISATION

Many products can also be personalised



HOODED  
BLANKETS



SOFT SHELL  
GILETS



SUBLIMATED  
WATER BOTTLES



## TERMS & CONDITIONS

### MANUFACTURING DEFECTS

All defects will be reviewed on a case by case basis.

Razzle Dazzle must be made aware of defects within 7 working days on receipt of the order by completing the returns form on our website [rddancecostumes.co.uk](http://rddancecostumes.co.uk)

Returns will not be accepted without this form being completed, returns must be pre-authorized

Once the garment has been received we will review whether a repair or replacement is required.

### FAULTS DURING/AFTER WEAR

Faults during wear will usually occur after initial use, we will look into faults after a longer period of use (up to 3 months) depending on the amount of wear they have been put through.

Please complete our returns form which can be found on our website [rddancecostumes.co.uk](http://rddancecostumes.co.uk)

Returns will not be accepted without this form being completed, returns must be pre-authorized

All garments returned must be in a clean condition, returns that are soiled/unwashed will not be accepted.

### SIZING/PRINTING ISSUES

If an incorrect size has been received or a name has been printed different to requested please contact [info@rddance.co.uk](mailto:info@rddance.co.uk) to resolve.

### FAQ

Can I cancel or amend my order?

As soon as your order has been placed it cannot be amended or cancelled.

Do you cover return postage?

Return postage costs will be covered for pre-approved returns in the event that Razzle Dazzle are liable for faults/errors.

Can I return garments if they are no longer required/I have ordered the incorrect size?

No, any made to order garments are non returnable/exchangeable. If any of the above errors/faults occur we will review on a case by case basis. All returns must be pre-authorized before they are sent.

What are your payment terms

All payments are to be made upfront.

**Once your order has been placed you agree to these terms and conditions**

If you have any questions please contact us at [info@rddance.co.uk](mailto:info@rddance.co.uk)