

# Winchelsea Star

Price \$1

Your Weekly Community Newspaper

Since 1977

Vol 47 Ed 38

Tuesday 1 October 2024

[winchelseastar.org.au](http://winchelseastar.org.au)



**Max Heaton-Harris with his two gold medals from School State Championships played at Tweed Heads**

See P.18

**SURF COAST SHIRE**  
WINCHELSEA WARD

**CONTACT ME**  
www.linktr.ee/joelgrist



**BACK TO BASICS**



**VOTE 1**

**Joel GRIST**

Authorised By: Joel Grist, PO Box 191 TORQUAY VIC 3231

Advertisement



**Casuarina Counselling Therapy**  
*Time For You*

Counselling to help find clarity, understanding and new ways forward for relief from distress of all kinds, including anxiety, depression, addiction, relationship issues.

**Call 0493 988 150 to book appointment**  
Available at The Exchange,  
32-34 Main Rd, Winchelsea

**WANT TO JOIN PROBUS?**

Enjoy fellowship with other members  
Enjoy trips & outings  
Listen to guest speakers



**Contact Lorraine**  
**0417 467 927**

**VOTE TONY PHELPS**  
for  
**Winchelsea Ward**  
Focus on what matters



- \* Faster road maintenance
- \* Community asset upkeep
- \* Community connection
- \* Sustainable budget

**tonyphelps.com**

Authorised by Tony Phelps, 40 Dicksons Rd, Winchelsea

Advertisement

**Scott McDonald**  
**0423 413 829**



**S.J.R AUTOMOTIVE**  
ASPN DRG 403 848 99  
13 ALCOB DRIVE, WINCHELSEA VIC 3241

# Youth graphic design trainee position

Work with local artist Jenny Murray-Jones to design a logo for Winchelsea Let's Get Together, Community Cob Wall Build.

This position is to provide a unique opportunity for a young local person to use their artistic talent and design a logo/poster. The applicant does not need previous experience but needs to show interest in being involved.

Age: 13-18, Winchelsea or surrounding suburbs resident.

Apply in writing (100 words limit) of why you want the position by 3/10/24 at 5 pm.

Email applications and enquiries to Alison:  
alisonpdean@gmail.com



# The Mud Hut Update...

## Let's Get Together, Community Cob Wall Build

by Alison Dean

We are planning to build a 900 mm high cob wall in late January or early March 2025, to provide greater wind/weather protection. Please let us know which would work for you.

The build will take place over a week, with artistic rendering occurring a week later. The build will be apart of a greater Let's Get Together, Winchelsea Community event. Where there will be lots of opportunities for everyone to join in, in one way or another. There will be music,

mud stomping and food. With the Men's Shed, Community Bank and Winchelsea Primary School confirming involvement so far.

This is an inniative that will not only give us a wall in our hut, but also provide us Winchelseans a special event to build our healthy, connected community.

We are now asking for people to get involved to make this happen.

We need people who can help do tasks to help gather people, and help be a part of the event. More hands makes lighter work.

We had a meeting last Thursday. Next meeting in 2 weeks. Date and time will be shared soon. Please let me know if you want to get involved. All welcome.

Contact myself, Alison Dean or Elaine, Growing Winchelsea Secretary.



**VOTE  RE-ELECT**

# Cr Adrian SCHONFELDER

**WINCHELSEA WARD**

**SURF COAST SHIRE ELECTIONS**

**TRUSTED EXPERIENCE**

Advertisement



Authorised by Cr Adrian Schonfelder 230 Andersons Road Borrolool, Victoria 3221



## CELEBRATE POSITIVE AGING MONTH

Enjoy this feel good movie  
and delightful afternoon tea .

Admission - Gold coin

Thursday , October 3rd , 1.30pm-5 pm

Shire Hall Winchelsea

Bookings: Jenny 0409 672054

Everyone welcome.



## Winchelsea Community Foodbank

Fridays, 12 - 2PM  
30-32 Hesse Street Winchelsea



For more info, contact Hannah  
healthpromotion@hessa.vic.gov.au  
0417 848 293



## WANT TO JOIN LIONS?

- Enjoy fellowship with other members
- Provide service for the local community
- Raise funds for local, national & global causes



Contact Murray  
0409 405 645

## Wightons Lawyers

Dispute Resolution & Litigation  
Debt Collection  
Property Law  
Wills & Estates  
Powers of Attorney  
Business Law  
Family Law  
By appointment only

22 Willis Street, Winchelsea  
ph. 5221 8777

[www.wightons.com.au](http://www.wightons.com.au)



### SIMPLE STORAGE SOLUTIONS

- Personal & Business Storage
- Boat, Caravan & Vehicle Storage
- High Security Premises
- Individually Alarmed Units
- Electric Gate Access
- 7 Day Access & CCTV

YOUR STORAGE PROBLEMS SOLVED

5267 3116

6 ALSOP DRIVE, WINCHELSEA 3241

## Funeral Planning

*Working out what is best for you*

Prepaid Funerals, Funeral Bonds, Pay-by instalments...There are many options and it's important to make the right choice  
Alyson Burchell will be available by appointment to answer any questions about funerals and planning ahead



For more information or to make an appointment contact Sue on 5221 4788

Tuckers Community Office,  
Surf Coast Taxation Services, 22 Willis Street,  
Winchelsea

First Tuesday of the Month,  
By appointment 10.00am - 12.00pm

## Tuckers

Funeral & Bereavement Service  
...for a life worth celebrating

Caring for families since 1883

5221 4788

[www.tuckers.com.au](http://www.tuckers.com.au)





# Out of the Shadows Walk 2024

by Robyn Black

Amazing effort by all involved Australia wide.

We had a small local turnout on Saturday 14th in rain, hail, wind and sunshine while we walked 9kms. One km for the 9 lives lost everyday to suicide.

Thank you!

Together, we have raised...

**\$2,439,160**

**for Lifeline's crisis support and suicide prevention services to help save lives.**



*IS YOUR BUSINESS GROWING AND THE DEMAND ON YOUR TIME FROM CLIENTS + PROJECTS HAS INCREASED?*

We back people and projects that strengthen our community, with operations support designed especially for service-based businesses.

www.theopside.com.au







# Grigoryan Brothers

Past, Present & Future

Sunday, 13 October 2024 | 2 PM

With a repertoire spanning centuries, continents and genres, amazing telepathy and the ability to draw emotion from every note, Slava & Leonard Grigoryan are justifiably regarded as Australia's finest classical guitarists.

"Guitar playing of uncommon originality and authority. Musicality, expressivity and daring,"  
– The New York Times

**BOOK NOW:** [copacc.com.au](http://copacc.com.au) | Box Office | 03 5232 9418 (#2)

**Ticket \$35, Concession \$32, COPACC Member \$28**



## FREE Winchelsea youth event this school holidays

Surf Coast Youth invite any young people aged 12-25 to attend our FREE school holidays program.

An event will be held at Winchelsea Community House:

### Youth Pod and skate jam on Friday 4th October

Please email Ella for more information:  
[esweeney@surfcoast.vic.gov.au](mailto:esweeney@surfcoast.vic.gov.au)

## Uniting Barwon Book Sale at Grovedale

The next book sale will be held on Friday 4th October and Saturday 5th October 2024, at the Uniting Barwon Grovedale site (272 Torquay Road, corner of Reserve and Torquay Roads) between 10.00am – 2.00pm.

Come along and browse through the great range of stock on offer. All books are only \$1.00 and children's books \$0.50!

The book sale raises much needed funds for our local Emergency Relief program and services.

We look forward to seeing you there.



Domestic - Commercial - Rural

# 0400 643 976

- All general Plumbing and Gasfitting • Water tanks and Pumps
- Renovations and Extensions • Hot water and Heat pump
- Split system and Wood heaters • Roof and Gutter
- Septic and Treatment plants • Excavation, Bobcat and Tipper
- Driveways and Earthworks
- Blocked drains and CCTV Inspection

Simon McGillivray

Lic: 109610 Free Quotes, Fast & Friendly Service



# 13 11 14



# parkrun 30

28 September 2024

Trebeck Reserve, Winchelsea

45 participants completed the course through Trebeck Reserve in perfect running and walking conditions this week. Sammi and Ally completed their first ever parkrun. We had visitors from Bannockburn, Lilydale, Albert Park and Canberra. Congratulations to Dee Kuchenmeister, Amanda McLelland, Mel Philpot, Greg Robinson and Jeff Butler who all who completed their personal best time for Trebeck Reserve. Well done everyone who walked, ran or volunteered.

We were privileged to have Winchelsea Community Bank staff join us, providing encouragement to participants, handing out drink bottles and helping with photography.

This event was made possible by the following nine volunteers: Liz Bennett \* Helen Woodall \* Neil McInnes \* Kate McInnes \* Jill Wakeman \* Murray Aisbett \* Don Smith \* Matthew Horner \* Matilda Pink. Special thanks to Matthew who visiting and also volunteered to hand out finish tokens.

Further details of this week's results can be found at [trebeckreserveparkrun.com.au/results](http://trebeckreserveparkrun.com.au/results)

Please check out our Facebook page for today's photos and further information (search Facebook for "Trebeck Reserve parkrun")

It takes a minimum of six people each week to safely conduct an enjoyable event. Please email [trebeckreserve@parkrun.com](mailto:trebeckreserve@parkrun.com) if you are able to volunteer some of your time. Tasks are simple, sociable, fun and very much appreciated.

If you wish to join us any Saturday morning as a walker, runner or volunteer please complete the simple online registration at [parkrun.com.au/register](http://parkrun.com.au/register). This is free, only needs to be done once and can be used at any of the 5,000 plus parkrun events worldwide.

Well behaved dogs on a short hand held leash are welcome (no waist harnesses please)

You do not need to be a runner, wear fancy Lycra or the latest high-tech shoes. Around one third of participants walk the course.

parkrun was conducted at 495 locations across Australia this week.



# Celebrate Positive Ageing Month in Winchelsea and Moriac

1-31 October

From dance and movement to trivia and information sessions, we're proud to support 25 events and activities to celebrate the Victorian Seniors Festival.

*An action-packed October awaits!*



Victorian  
Seniors  
Festival  
2024

EXPLORE.  
ENGAGE.  
EVOLVE.

Check out the full calendar of events at  
[surfcoast.vic.gov.au/PositiveAgeingMonth](http://surfcoast.vic.gov.au/PositiveAgeingMonth)  
or call **5261 0600**.



# HINTERLAND ART SCHOOL WINCHELSEA

## FIGURE DRAWING SPRING SALON

SATURDAY 5 OCTOBER  
SATURDAY 26 OCTOBER

1-5 pm  
St Thomas Church Hall  
27-29 Barwon Terrace Winchelsea

Cost per class: \$85  
Early Bird Discount available  
(book both sessions for \$150)

## PAINTING AND DRAWING

10 OCTOBER TO  
12 DECEMBER 2024

THURSDAYS 1-3 pm  
St Thomas Church Hall  
27-29 Barwon Terrace Winchelsea

Course cost: \$650

- All materials included
- All classes suitable for all levels of ability.

Email: [Hinterlandartschool@gmail.com](mailto:Hinterlandartschool@gmail.com)  
Phone: 0493 479 447

Hinterland Art School Winchelsea  
acknowledges the support  
of DEVELOP:  
2022 Arts Development  
Seed Fund



## TREE WORKS & STUMP GRINDING



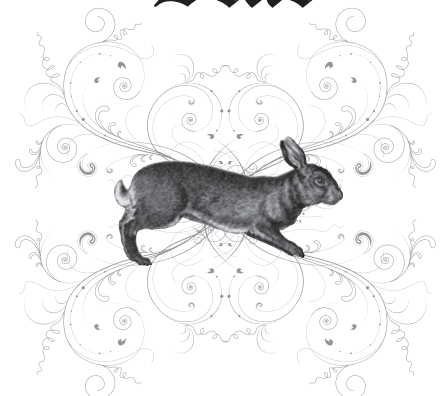
Fully insured and qualified  
climbing arborists.

Slashing and fire preparation.

FREE QUOTES  
**0488 553 650**  
Mathieu Vaupres

[www.colactrees.com.au](http://www.colactrees.com.au)

# Winchelsea Star







**WINCHELSEA  
PROBUS CLUB  
PRESENTS**



**MONDAY 7<sup>TH</sup> OCTOBER**

**11AM**

**WINCHELSEA  
SENIOR CITIZENS ROOMS  
HARDING STREET**

**GOLD COIN DONATION**

**IF YOU WOULD  
LIKE TO COME**

**PLEASE CONTACT**

**LINDA 0439 817 263**

# Winchelsea Star

Your Weekly Community Newspaper

Since 1977

[winchelseastar.org.au](http://winchelseastar.org.au)



## This week's Winchelsea Star

10 September 2024

Editor - Yvonne Stevens

Design - Susan Corby

Advertising - Sasha Gauntlett

Distribution - Linda Carter

**THANKYOU!**

### Community Newspapers

The Winchelsea Star is one of 70 members of the Community Newspaper Association of Victoria. These volunteer-driven papers inform and educate their communities, strengthening them socially and economically and helping them to be resilient in times of hardship. They publish stories to let their residents know the history and culture of their people and localities.

### Volunteer Committee

The Star is a registered non-profit Incorporated Association, directed by a Committee of Management with nine members.

### Where local stories come from

Articles, news, information and events are supplied by the local community and businesses, local state and federal governments, and various groups. Some organisations, such as parkrun, Winchelsea Golf Club, Winchelsea Lions, Winchelsea Primary

School and the Football and Netball Clubs, send stories and sports results regularly.

### Weekly production

Each edition needs the following input

- Editor(s)
- Advertising manager(s)
- Designer(s)
- Printer
- Distributor(s)

Ideally, all jobs are shared to spread the workload and cater for holidays, sickness.

All roles are voluntary except Designer and Printer which are sub-contracted.

The Winchelsea Star is compiled by Monday afternoons, and printed and digitally distributed on Tuesdays. Hard copies are distributed on Wednesdays, and are available from Wednesday afternoon from local shops.

### Like to help?

The Star is a community publication, by the community, for the community, and community participation is key to its ongoing success.

We welcome volunteers to assist in management, become a reporter to sniff out stories, create advertising graphics, distribute printed editions, or take photographs.

## send your stories

[news@winchelseastar.org.au](mailto:news@winchelseastar.org.au)

### LOCAL NEWS and ARTICLES WELCOME

Include name and address of the sender  
Email [news@winchelseastar.org.au](mailto:news@winchelseastar.org.au)  
Leave hard copy at IGA Supermarket

### DEADLINE 5pm Fridays

4pm Sundays - hard copy articles left at IGA

6pm Sundays - sports results and weekend events

### ADVERTISING

[advertising@winchelseastar.org.au](mailto:advertising@winchelseastar.org.au) 0408 102 802

## free digital subscription

[winchelseastar.org.au](http://winchelseastar.org.au)

### FOLLOW US ONLINE

[winchelseastar.org.au](http://winchelseastar.org.au)

### FACEBOOK

[facebook.com/TheWinchelseaStar](https://facebook.com/TheWinchelseaStar)

## production

**Editors:** Cerrie Fogan, Yvonne Stevens, Judy Cameron

**Advertising:** Sasha Gauntlett, Neil McInnes

**Design:** Susan Corby, Tony Phelps

**Printing:** Winchelsea Community House

**Website:** [winchelseastar.org.au](http://winchelseastar.org.au)

## committee

**President:** [president@winchelseastar.org.au](mailto:president@winchelseastar.org.au)  
Neil McInnes

**Treasurer:** [treasurer@winchelseastar.org.au](mailto:treasurer@winchelseastar.org.au)  
Cathy Cheadle

**Secretary:** [secretary@winchelseastar.org.au](mailto:secretary@winchelseastar.org.au)  
Tony Phelps

**Members:** Mick O'Mara, Linda Carter,  
Sasha Gauntlett, Judy Cameron,  
Yvonne Stevens, Cerrie Fogan



© Winchelsea Star Org. Inc. All rights reserved  
Winchelsea Star Organisation Inc.

Reg. No. A0053999F ABN 75 941 529 279  
[winchelseastar.org.au](http://winchelseastar.org.au) PO Box 5 Winchelsea 3241

Views expressed are not necessarily those of the Winchelsea Star or Committee. The Winchelsea Star reserves the right to edit or not publish any article.



# Winchelsea Star COMMUNITY NOTICEBOARD

email editor@winchelseastar.org.au or  
leave at Winchelsea IGA



Social Bridge is played

**EVERY TUESDAY**  
**10.30 AM-1.00 PM**

**SENIOR CITIZENS CENTRE**  
36 Harding Street Winchelsea

*New players always welcome*

Elaine Atkinson 0458 009 616

## WINCHELSEA PICKLEBALL

Winchelsea Leisure Time Centre  
(next to the Primary School)  
Wed 7-830pm or Thurs 10-11.30am.

All equipment supplied,  
wear suitable footwear.

Lesley Mathison 0438 672 197

## WINCHELSEA GIRL GUIDES

Are you interested in joining an  
enthusiastic, self-motivated team working  
with girls, 5-15 years?

Winchelsea Guides are seeking female  
adult volunteers. We are losing our lovely  
Unit Helper Teresa, who is moving to  
Geelong, and to comply with adult child  
ratios we need more helpers.

Come and help us provide a stimulating  
program giving leadership development  
opportunities for girls, as well as providing  
fun and friendship.

You will need -

- Police Check clearance  
(provided by Guide Centre)
- Working with Children Check  
(free when working as a volunteer)

Phone Yvonne 0448 672630

## WINCHELSEA TENNIS CLUB

### JUNIOR COACHING

Mondays from 3.30pm with experienced  
Nicole Mullen, \$10

### SOCIAL TWILIGHT TENNIS

Monday evenings from 6.00pm.  
All Welcome!

## WINCHELSEA OP SHOP

### Mens and Ladies Clothes Sale

Once again we will have our  
\$5 bag of clothes for Men and Ladies  
on over the next 2 weeks  
Plenty of bargains,  
be sure not to miss out.

### \$5 bag of Clothes for Children

Sale on again for the next 2 weeks.  
You will be sure to find something  
that your child needs.

*Thanks everyone for your support in  
helping the Op Shop over the years.*

### Winchelsea Op Shop Ladies

## WINCHELSEA LIONS

Environmentally friendly  
compressed paper bricks for your fire.  
Save on the rising cost of wood.  
Pack 4 bricks \$5 - Roll small rolls \$2  
Contact Alan 0476 475 422

*Please note DATE change for November  
Community Market is Sunday 10th  
November due to Art Show on the long  
weekend*



FIRST SUNDAY OF EACH MONTH

6 October 2024	5 January 2025
<b>10 Nov 2024</b>	2 February 2025
1 Dec 2024	2 March 2025
	6 April 2025
	4 May 2025
	1 June 2025

## DIAMOND DOT DAY

Saturday 5th October

Senior Citizens Winchelsea  
11.00 am-4pm

\$5 for the day or

\$10 if you want lunch as well  
Hot roast lamb and chicken rolls  
Plus afternoon tea

Please let Tracey Drayton know  
if coming for lunch for catering  
Ph. 0427500649





mainly music est. 1990

Fun, Interactive music sessions for pre-school children (0-4 y.o.) and parents/caregivers

When: Mondays from 10 to 11 am (runs during school terms)

Where: St Thomas' Hall  
25 Barwon Tce.

To Enquire ring: 0407838256

**Kyeema**  
Rural Fencing Pty. Ltd.  
Jason Armstrong & Jay Hawker  
1080 Prices Lane, Ombersley, Victoria. 3241  
0419 565085 (Jason)  
0416 585817 (Jay)  
kyeemafarm@kyeemafarm.com.au  
Also incorporating domestic and rural tree trimming services.

**RICHARDSONS**  
5234 6585 0417 385 984  
For all your septic tank, grease traps and interceptor pits servicing.  
Locally owned and operated

**DAVIC AG**  
**CONTRACTING AND EARTHMOVING**  
For all your harvesting needs  
Mowing, raking, round bailing, paddock prepping, spreading and sowing  
Call Dave on **0417 579 973** Bambra

**STS**  
ACCOUNTING GROUP  
**Your Taxation & Superannuation Specialists.**  
Winchelsea  
**5267 2673**  
[www.surftax.com.au](http://www.surftax.com.au)

**OZ TREES NURSERY & TREE PLANTING SERVICES**

- Affordable seedlings—over 200 species
- Complete plantation service—farm forestry, shelter, aesthetics
- Deep ripping & mound ploughing. Rotary bed forming
- Our experienced staff will help you select species for your site conditions and needs

Also available—tree planting tools, milk cartons, plastic tree guards & bamboo stakes

569 Warrowie Rd. Colac  
P: 5233 6280 F: 5233 6393  
E: [info@oztrees.com.au](mailto:info@oztrees.com.au)  
W: [www.oztrees.com.au](http://www.oztrees.com.au)  
Open Monday—Friday  
9am—4:30pm

**Phone OzTrees for professional advice,**

**Dance ENROLMENTS NOW OPEN!**  
Winchelsea  
Dance Classes  
**REGISTER NOW**

JAZZ - THEATRICAL TAP - HIP-HOP  
CLASSICAL BALLET - CONTEMPORARY  
Pre-School - Adults  
Beginner - Advanced Levels

[www.melsdancecentral.com.au](http://www.melsdancecentral.com.au)

**direct TEMPORARY FENCING**  
FOR HIRE - SUPPLIED & ERECTED - 7 DAYS  
GEELONG - BELLARINE - COLAC - SURF COAST  
PHONE CAM 0417 310 800

**DownRyte Excavations**

- Excavations
- Drilling and Piling
- Rock Placement
- Tree and Stump Removal

Sean Hunwick  
Mobile: 0409 447 288  
Email: [downryte@activ8.net.au](mailto:downryte@activ8.net.au)

# Winchelsea Combined Churches

(Anglican, Catholic & Uniting Congregations)

## Community Dinner

6.00pm - Friday 18<sup>th</sup> October

Uniting Church Hall

Hesse Street, Winchelsea

**Nibbles, Two Course Meal**

*plus, Tea & Coffee*

**\$15.00 per person**

**- Speaker -**



**Charlie Earl**

**'Conquer the Corrugations'  
Raising Mental Health  
awareness**

***Everyone Welcome!***

**RSVP essential - by Monday 14<sup>th</sup> October**

For RSVP and more details contact:

Lyn: 0400 649 652

Marg: 0418 983 005

Jenny: 0418 378 757



# Snake season is here, be prepared and stay safe

As temperatures rise, snakes are emerging from a period of reduced activity during winter seeking food and mates. Snakes may be more visible during the warmer months, but it's important to remember that they will generally avoid people.

Abby Smith, Senior Wildlife Projects Officer, from the Department of Energy, Environment and Climate Action (DEECA) said: "Most snake bites occur when people try to capture or kill them. Snakes may defend themselves if they feel threatened. It's best to leave them alone and keep dogs on leads when out walking."

Supervise pets and children closely in areas where snakes are known to occur. Abby Smith says "Talk to kids about snake safety; what to wear, staying on the path and not putting your hands in long grass, under rocks or tin."

Please remember:

- Snakes present little or no danger to people when left alone
- Wear long pants and proper shoes, carry your mobile and snake bandages when in the bush
- Keep your pets away from areas with snakes
- If you suspect your pet has been bitten, seek veterinary attention immediately

- Maintain lawns and clean up around your house - snakes are attracted to shelter such

as piles of rocks and timber, sheets of metal, and building materials

- Untidy bird aviaries may attract rodents, which snakes eat; clean up after your birds

- Don't attempt to capture or harm snakes; instead call a licensed snake catcher

- If someone is bitten, call 000 immediately

Snakes are protected under the Wildlife Act 1975, and capturing, harming, or killing them is illegal.

You can report wildlife crime to Crime Stoppers Victoria on 1 800 333 000.

For more information contact DEECA on 1 36 1 86.

For essential snake bite first aid information, visit [www.stjohnvic.com.au/news/snake-bitefirst-aid-tips/](http://www.stjohnvic.com.au/news/snake-bitefirst-aid-tips/)



McGrath Foundation

# LUNCHEON

BREAST CANCER AWARENESS MONTH

SATURDAY 12TH OF OCTOBER

11:00AM-2:00PM | WINCHELSEA SHIRE HALL

Guest Speaker, Music, Food, Drinks and more.  
\$50 tickets to be pre-purchased at the Winchelsea IGA or Winchelsea community house.




Start your career with the

## CERTIFICATE III IN EARLY CHILDHOOD EDUCATION and CARE

Mondays & Tuesday  
9am - 3pm  
(During School Terms)

Contact: [manager@winchhouse.org.au](mailto:manager@winchhouse.org.au)  
or 03 5267 2028 For more information.

THE WINCHELSEA STAR ORGANISATION INC.




FOR THE CONSIDERATION OF AND VOTE ON A PROPOSED UPDATED CONSTITUTION.

CURRENT MEMBERS AND NEW MEMBERS WELCOME (NO JOINING OR RECURRING MEMBERSHIP FEE)

# EXTRAORDINARY GENERAL MEETING

WED. 9TH OCTOBER

7PM START

HELEN VERITY ROOM,  
WINCH HOUSE



Café La Hoot

have you tried  
'owl' coffee?

1 willis st cafelahoo@gmail.com 0407 528 999

## TRENCHES & HOLES PTY LTD.



**PHILLIP ROBERTSON**

**☎ 0427 672 945**

**WINCHELSEA**

- General Earth Works
- Driveways
- Trencher
- Kanga Loader
- Grader
- Excavator Work (3.5 & 6.5 Tonne)
- Tip Truck
- Rock Breaker
- Post Holes & Shed Footings

A.B.N 74006896898

Water Delivery



**WAZZA'S**  
WATER CARTAGE

Stainless Tanker Up to 22,000 ltr loads  
Barwon Water Registered

Domestic & Rural Water Supplies

Call Wazza

Mob: 0428 877 260

Email: wazza@wazzas.com.au Web: wazzaswater.com

## M & L DRAYTON

### PLUMBING SERVICES

REG No 24356 C/A No C02594

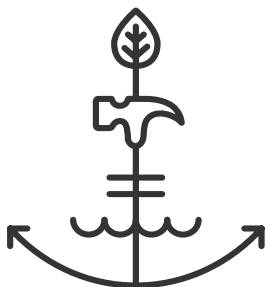
- Domestic and Rural Plumbing
- Roofing
- Sewerage & Septic
- LPG & Natural Gas Connections
- Motorised Drain Cleaning
- Backhoe Hire

**Phone Mark 5288 7244**

PO BOX 98 WINCHELSEA 3241

**Mobile 0428 520 142**

GUIM DESIGNS



CARPENTRY

- DECKS - SAUNAS
  - FLOORING - PERGOLAS
  - WEATHERBOARDS
  - HORSE SHEDS
  - CLADDING - FENCES
- ALL THINGS TIMBER AND MORE...

INSTAGRAM guim\_designs

CALL PAT ON

**0401 232 674**





**EXPECT  
NOTHING  
LESS**



**TICKETS ON SALE**  
**OCTOBER 8**

[GRANDPRIX.COM.AU](http://GRANDPRIX.COM.AU)

**ALBERT PARK CIRCUIT | 13 - 16 MARCH 2025**

THE F1 FORMULA 1 LOGO, F1 LOGO, F1, FIA FORMULA ONE WORLD CHAMPIONSHIP, FORMULA 1, GRAND PRIX AND AUSTRALIAN GRAND PRIX AND RELATED MARKS ARE TRADEMARKS OF FORMULA ONE LICENSING BV, A FORMULA 1 COMPANY. ALL RIGHTS RESERVED.



# Winchelsea Blues Bowls Club

Julie Johnson



As our season 24/25 is about to commence I would like to introduce you to an extremely talented, humble and hardworking Junior Member, Max Heaton-Harris. Max and his family live in Colac and he is the eldest of 5 children of whom all are sports orientated.

His late grandfather Peter, a talented bowler was the first manager of the Bendigo Bank at Colac and his grandmother Pam is a remedial massage therapist who worked for several years in Winchelsea. His parents are Alex and Samantha.

Max first came to the attention of our Coach Rhys Jeffs as a young bowler trying to improve his game at Colac City and who wanted to take advantage of Junior/Under 18 competitions. Our Coach Rhys Jeffs who has bowled from 11 years of age and continues to achieve many accolades related to bowling while also being very involved with growing youth in sport and Indigenous Affairs.

He commenced coaching Max privately in Colac and Max shortly followed him to Winchelsea. This has been a great mentorship and a successful outcome working together to meet the goals, as this will be the 3rd Winchelsea season with Max playing in Saturday Division 1.

Max has also achieved 2 years in the Schools Championships against other states at Tweed Heads and this year thoroughly deserved his gold medals for the 4's and the Victorian Overall. The pairs match where he and his partner were victorious was also great to watch on live stream, they were

very worthy winners, however the team did not win the pairs overall.

Now a member of the Victorian Under 18 squad Max has a lot more travelling, competing and experience to gain in the upper echelons of the game. Many thanks to his parents for their wonderful support of their talented son, also to the Winch players with vast experience who will help out when needed.

This is definitely something that reflects the way Rhys thinks as a Coach to utilize his experienced, talented players and his encouragement of all. We are very proud to see you in the Blues each week and at the many Tournaments in which you are proud to represent our Club, a fantastic work ethic and a wonderful member. Congratulations Max Heaton-Harris and may your dream of playing for Australia come to fruition, you would certainly be a more than worthy representative.

## AROUND THE GREEN

In some pretty ordinary weather a practice match was played on the 21st of September against Bannockburn with Winchelsea being successful on all 8 rinks.

Meanwhile many club events have been completed in the lead up to a shortened season where State Events take priority.

Congratulations to Erin Baulch and Pip Ward Ladies Championship Pairs, R/Up Julie Johnson and Annie Walker.

Congratulations to Jay Hawker and Stewart Williams Men's Championship Pairs, R/Up David Littler and Lawrie Davie (substitute)

Congratulations to Julie Johnson 21 Up winner, R/ Up Peter McConachy.

Congratulations to Graeme Lloyd, Jay Hawker and Max Heaton-Harris Club Championship Triples Winners, R/ Up Erin Baulch, Pip Ward and Stewart Williams.

Final of 100 Up to be played between Ray Quigley and Stewart Williams shortly.

## COMING UP

- Club Championship Fours
- Consistency Singles
- Jenny McConachy Memorial Mixed Fours Tournament

Pennant commences on Tuesday the 8th of October with both Divisions 1&3 at home and on Saturday the 12th of October with Division 4 at home.

Hopefully we all make a good start and the weather becomes a lot more conducive to some great bowling.

*May the bowls be with you!!*



# Presentation nights wrap up - 2024

by Mel Philpott

On Thursday 26 September, the Winchelsea Football Netball club gathered to close the curtain on season 2024.

Buckleys Entertainment Centre provided its usual ambience as host venue. The Presentation Night itself was a room abuzz with glamour, drinks, friends, and reflections on the year that was. The speeches were plentiful, with thanks and sentiments shared amongst speakers. Coaches spoke of their teams' successes, challenges and supports. The award recipients were each deserving for their own contributions. The night concluded with memories of our friend and teammate Ed Smith.

A big congratulations to the recipients below.

## Under 19s

**Best and Fairest** - Kalarni Boddington

**Runner Up Best and Fairest** - Claire Gaffney

**Coaches Award** - Brooke Ives

**Most consistent** - Sammi Kuchenmeister

**Leslie Mathison Best Junior Club Person** - Emily Caldicott

## D Grade

**Best and Fairest** - Paris Sharp

**Runner Up Best and Fairest** - Amanda Hilet

**Best in Finals** - Abbey Todd

**Players Player** - Holly Worland

**Coaches Award** - Chrissy Noble

## C Grade

**Best and Fairest** - Emma Maclean

**Runner Up Best and Fairest** - Anna Smart

**Best in Finals** - leisha Brown

**Players Player** - Claire Mawson

**Coaches Award** - Emma Maclean

## B Grade

**Best and Fairest** - Hannah Garner

**Runner Up Best and Fairest** - Connie Royal

**Best in Finals** - Connie Royal

**Players player** - Connie Royal

**Coaches award** - Kalarni Boddington

## A Grade

**Best and Fairest** - Rhiannon Williams

**Runner Up Best and Fairest** - Gemma Stavenuiter

**Best in Finals** - Meg Royal

**Players Player** - Zoe Tennant

**Coaches Award** - Kat Kasparian

## Reserves Football

**Best First Year Player** - Tylar Hemphill

**Best and Fairest (Joint)** - Bailey Forssman, Luke Foot

## Seniors Football

**Most Consistent** - Adam Walsh

**Most Courageous** - Cassidy Parish

**Most Determined** - Jordan Gould

**Best Team Player** - Lachie Gemmill

**Players MVP** - Caleb Brown

**Runner Up Best and Fairest** - Caleb Brown

**Best and Fairest** - Finn Parish

## Club Awards

**Neil Leak Memorial Best Clubs**

**Person** - Janet Fletcher

**Life Members' Award** - Brendan Kelly

**Ed Smith Most Valuable Person**

**Award** - Ollie Mahncke

**Donny Parish Memorial Trophy**

- Haylee McCallum

**Netball Co-ordinators Award** - Mel

Philpott

Not to be forgotten are our little Blues

- who enjoyed Junior presentation night some weeks ago.

Congratulations to the award winners below;

## 13&U

**Best & Fairest** - Eadie Canavan

**Best & Fairest R/Up** - Heidi Wilson

**Most Improved** - Archie White

**Coaches Award** - Harper Stocks

## 15&U

**Best & Fairest** - Lexi Czerniawski

**Best & Fairest R/Up** - Elizabeth Humphries

**Most Consistent** - Esther Grimmer

**Coaches Award** - Elle Chittenden

## 17&U

**Best & Fairest** - Reani Mawson

**Best & Fairest R/up** - Millie Partridge

**Coaches Award** - Ash Bell

**Coaches Award** - Millie Partridge

**Best in Finals** - Monet Drew

May the offseason be a safe and happy one. Best wishes from all at the Blues.



Millie Partridge 17&U Runner Up Best and Fairest and Coaches Award winner



Mawson family at Presentation Night



D grade at Presentation Night



## MOUNT HESSE HOMESTEAD

The property has historical associations with a number of important figures in Victoria's history including early pastoralists John Highett and William Harding, who first established the property, and later the Geelong merchants William Timms and John Wilson, who owned the property from 1853 to 1856.

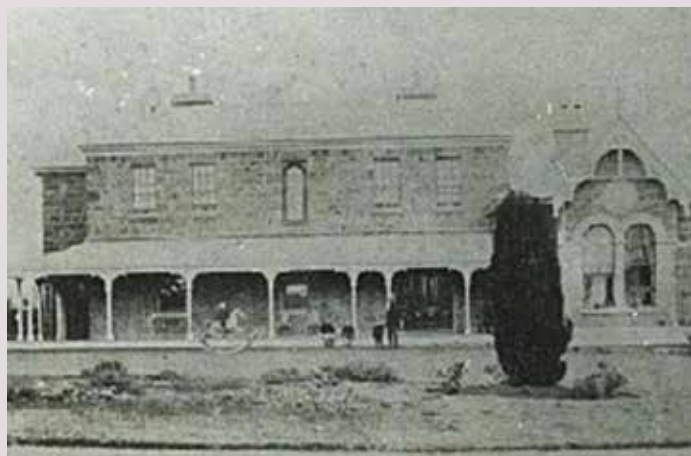
William Timms, who by 1849 was Geelong's biggest exporter of wool, became sole owner of Mount Hesse in October 1856 when he bought John Wilson's share for £17,500.

The property was later broken up and acquired by Timms' sons and run as three separate properties, 'Eurack', 'Mountside' and 'Mount Hesse', Mount Hesse being the homestead section and comprising 15,866 acres (6,400ha). In 1882 James Kinninmonth purchased Mount Hesse from William Timms (Junior) and it has been managed by the Kinninmonth family ever since.



### WINCHELSEA HISTORICAL SOCIETY

Hesse Street Cnr Princes Highway Winchelsea 3241  
OPEN Wednesdays 1 - 4pm, Fridays 10 - 3pm



# Winchelsea Churches



## St John's Catholic Church

Father Joseph Panackal  
0404598558  
Harding St, Winchelsea 3241

### MASS TIMES

Winchelsea - St. John the Baptist @  
5pm Sat. Oct. 5, 12, 19, 26

Bannockburn – St. Mary MacKillop @  
11am Sun. Oct. 6, 13, 20, 27

Inverleigh – Sacred Heart @ 4pm Sun.  
Oct. 20

## St Thomas' Anglican Church

Rev'd Phil Jacobson  
0477 672 042  
stthomaswac@gmail.com  
Barwon Tce, Winchelsea  
Service 10am

## Winchelsea Uniting Church

0475 777 301  
uca.winchelsea@gmail.com  
Hesse St, Winchelsea 3241  
Services 9.30am Sundays

### Thought for the Week

"Deep peace of the running wave to  
you.

Deep peace of the flowing air to you.

Deep peace of the quiet earth to you.

Deep peace of the shining stars to you.

Deep peace of the the son of peace to  
you.

Have a peaceful week."

**John Bader,**  
Former U/C Accredited Lay Preacher

## ***"There's Nothing New Under The Sun"***

How often have you heard it said that the number of people going to church is getting less and less? Compared with twenty years ago that's probably a very true statement!

For many people, the business of life doesn't leave a lot of room for much else, let alone getting out of bed on a Sunday to go to church. You know what it's like, young families to look after (and don't they take some looking after!!!) work commitments, sporting activities for all members of the family, friends, and relations to visit, holidays to squeeze in, the list goes on and on.

Yet there is still a keen sense of "spirituality" that flows through the community. There's a sense of "Wow!" as you play with a puppy or kitten. A sense of "Why me!" as you look at your children or grandchildren and realise what a great gift you've been given to help raise. A sense of "There's something bigger!" in so many things. All of these cause us to consider the big questions of life and how we fit into the scheme of things. This is part of today's spirituality because these experiences cause you to wonder about bigger things which often defy explanation.

Our church, St Thomas, does the same thing, but we do it in a particular style and fashion which is also slowly changing. Nevertheless however, it seems that there's a timeless consistency with the "message" that lies beneath what we do.

In the first half of the 8th century BC the Old Testament prophet Amos and had something to say (on God's behalf) to the people at the time. He said that they needed to be much more concerned about injustice in the world and actually work towards doing something about it!

He tied that reluctance to help others in with the way they were leading really self-centred, selfish lifestyles and how that was impacting on their society to the detriment of others! He also was really critical at the "church" of the time and said that they had an almost 'pretend' religion without any true substance to back it up! People didn't "live out" the lives that they claimed to have!

Much the same thing is being said today. You see, a timeless message!

But beneath it is always an invitation to move away from such self-centredness whether its power, image, position, wealth, or selfishness, and to link in with that force behind the sense of "Wow" so that we can start to change the world for the better, beginning with ourselves. A lot of the things that bother us and inhibit us have already been dealt with (look up "Why Easter" on Google) so they no longer need to get in the way. Good News eh!

So, let me encourage you to not worry about what the world seems to think, but rather hold on to the God that you have experienced throughout your life through the "Wows," and continue to trust that sense that there's something there to care for you at every moment. By doing this you'll continue to be part of what the church calls "the family of God" and you can enjoy the amazement that this brings every moment of your life.

We continue to get together at 10.00am each Sunday in a warm church hall seated on comfortable chairs as we continue to explore how the world sees us, and why we're called to act in congruent ways within that world. This time together is actually really good, and it's now structured so that everyone who comes along can find something which has some significance for them. If you'd like to explore a bit more, feel free to ring 0419 322 385.

# Artificial Estuary Openings Short-Lived In Wild Weather

The Victorian coast experienced extremes of wind, storm, swell and tides over the last month that inundated parts of the Great Ocean Road and low-lying public and private land. It also led to rapidly changing conditions at the mouths of many of the state's estuaries, where rivers meet the sea.

The Corangamite region has more estuaries than anywhere in Victoria, and the Corangamite Catchment Management Authority (CMA), the statutory authority responsible for regulating artificial estuary openings, has been busy.

"In the Corangamite region, most of our estuaries naturally alternate between having an open channel to the sea to being disconnected by the build-up of sand at the river mouth. When estuaries are closed, low lying land and assets can become inundated. To reduce flood risk to major roads, properties and infrastructure, estuaries can be artificially opened to the sea using an excavator if conditions allow for a safe



and effective opening.

"The Curdies estuary was safely artificially opened just prior to the storms, easing local flood risks. In Breamlea, it was disappointing to see an illegal attempt to open the Thompson Creek estuary, where an excavated channel reached the sea in late August. This could have resulted in significant environmental impacts to native fish and birds at the site."

Both the Curdies and Thompson Creek estuaries closed naturally to the sea within a week of their opening.

"This demonstrates how dynamic our coast is and how short-lived human interventions like artificial estuary openings can be in this environment," said Dr Clarke.

"Wherever possible current research indicates it is best to leave estuaries to

operate naturally to maintain the health of waterways, vegetation and wildlife.

"The Aire and Gellibrand estuaries were closed to the sea prior to the storm event hitting the coast, leading to high water levels. An artificial estuary opening to mitigate flooding was not possible until conditions eased allowing for safe access— the safety of workers is paramount. The Gellibrand estuary entrance opened naturally, and the Aire estuary mouth was artificially opened on 10 September once conditions eased.

"This is why we must urgently continue our work to understand and communicate the future impacts of climate change and sea level rise for coastal communities. Our focus and effort must move past short-term solutions, to planning and delivering resilient coastal communities that can adapt to these conditions."



**WINCHELSEA  
GOLF CLUB**

**45 Anderson Street  
Winchelsea  
VIC3241**

**03 5267 2660**

# MRP Steelworx

Matthew Partridge  
p 0418 672 334  
e mrpsteelworx@yahoo.com.au

## Welding Service

- Onsite welding
- Farm maintenance
- Farm machinery & equipment repairs
- Cattle & sheep yards
- Custom built trailers
- Supply & install gates



5234 6585 0417 385 984  
For all your domestic & stock water.  
Also available for road and civil construction  
Local owned and operated.

52672192 R & K Creative Framing  
for all your framing needs

free quotes  
pension discount  
specialist in Age & Disability Modifications

Ray & Kim Jansen  
10 Witcombe st  
Winchelsea 3241  
0414672192

Ray The Home Maintenance HANDYMAN  
abn 47929623462



## Winchelsea Supermarket

Trading Hours  
**Monday to Saturday**  
8.30am to 7.30pm  
**Sunday**  
10am to 7pm  
**Ph: 5267 2676**  
29 Main St, Winchelsea

## Antique Repairs

By **Doug Burns** est. 1976

- All Furniture
- French polishing
- Carving
- Veneering
- Wood Turning
- Porcelain



*Unusual Requests Welcome*

180 Barwon Terrace, Winchelsea

**0428 672 704**

All About **Mowers & Chainsaws**

Repairs to all makes and models of ride on mowers, domestic mowers, pumps, chainsaws, brushcutters and small engines.

Trading Hours: Mon - Fri 8am - 5pm Saturday 8am - 12 noon  
**5267 2266** Cnr Princes Hwy & Lennox St Winchelsea  
www.allaboutmowers.com.au  
accounts@allaboutmowers.com.au

FERRIS COX STIHL BRIGGS & STRATTON VICTA



## SOUTHERN GRAIN STORAGE PTY. LTD.

AG SUPPLIES FERTILISER GRAIN STORAGE SEED CLEANING

**(03) 5267 2351**

## Winchelsea Men's Shed



**For The Community**  
Men's Shed Kindling/Offcuts  
Bags of Kindling/timber offcuts are available for pick up from the Men's Shed on Wednesday's from 9.30 to 2.30.  
If you need a delivery made you can call Bill on 0438 083 373. The price for a bag of kindling is now \$7.00 (up from \$5.00).  
**Nesting Boxes**  
Bird or animal nesting boxes are available from The Men's Shed. These can be made to order. Call in on any Wednesday to have a chat.

## WINCHELSEA CONCRETING

• Driveways • Sheds • Decorative Concrete • Raft Slabs

**Robert Murphy**

☎ 0438 235 237

✉ winchelseaconcreting@outlook.com



# WINCHELSEA FACEBOOK



## Non-profit community Groups and Pages

What's on in Winchelsea	<a href="https://facebook.com/WhatsoninWinchelsea">facebook.com/WhatsoninWinchelsea</a>
Winchelsea FREE	<a href="https://facebook.com/groups/winchelseafree">facebook.com/groups/winchelseafree</a>
Winchelsea Community Information	<a href="https://facebook.com/groups/207538644446972">facebook.com/groups/207538644446972</a>
Winchelsea Classifieds 3241	<a href="https://facebook.com/groups/216942861684082">facebook.com/groups/216942861684082</a>
Winchelsea Lost and Found	<a href="https://facebook.com/groups/768187693217518">facebook.com/groups/768187693217518</a>
Winchelsea Op Shop	<a href="https://facebook.com/HospitalAuxiliaryOpShopWinchelsea">facebook.com/HospitalAuxiliaryOpShopWinchelsea</a>
Winchelsea Shire Hall	<a href="https://facebook.com/WinchelseaShireHall">facebook.com/WinchelseaShireHall</a>
Winchelsea Community House	<a href="https://facebook.com/winchelseacommunityhouse">facebook.com/winchelseacommunityhouse</a>
Winchelsea Coronavirus Community Support Group	<a href="https://facebook.com/groups/2676957719207927/">facebook.com/groups/2676957719207927/</a>
The Green Winchelsea Residents	<a href="https://facebook.com/groups/515322772623126">facebook.com/groups/515322772623126</a>
Growing Winchelsea Inc	<a href="https://facebook.com/growingwinch">facebook.com/growingwinch</a>
Winchelsea Star	<a href="https://facebook.com/TheWinchelseaStar">facebook.com/TheWinchelseaStar</a>
Winchelsea Movie Club	<a href="https://facebook.com/winchelseamovies">facebook.com/winchelseamovies</a>
Winchelsea Community Market	<a href="https://facebook.com/100083362387611">facebook.com/100083362387611</a>
Winchelsea Land and River Care Group	<a href="https://facebook.com/envirowinchelsea/">facebook.com/envirowinchelsea/</a>
Upper Barwon Landcare Network	<a href="https://facebook.com/UpperBarwonLandcare">facebook.com/UpperBarwonLandcare</a>
Winchelsea & District Historical Society Inc	<a href="https://facebook.com/Winchelseaanddistricthistoricalsociety/">facebook.com/Winchelseaanddistricthistoricalsociety/</a>
Winchelsea Wildlife Shelter	<a href="http://www.winchelseawildlifeshelter.com/">www.winchelseawildlifeshelter.com/</a>
SCARS - Surf Coast Animal Rescue Service	<a href="https://facebook.com/groups/415211698950674">facebook.com/groups/415211698950674</a>
Winchelsea Gardeners	<a href="https://facebook.com/groups/779878518703025">facebook.com/groups/779878518703025</a>
Winchelsea & District Historical Society	<a href="https://facebook.com/Winchelseaanddistricthistoricalsociety/">facebook.com/Winchelseaanddistricthistoricalsociety/</a>
Winchelsea Repertory Society Inc	<a href="https://facebook.com/winchrep/">facebook.com/winchrep/</a>
Winchelsea Globe Theatre	<a href="https://facebook.com/Winchelsea-Globe-Theatre-164790897641678">facebook.com/Winchelsea-Globe Theatre-164790897641678</a>
Winchelsea Uniting Church	<a href="https://facebook.com/winchelseaunitingchurch">facebook.com/winchelseaunitingchurch</a>
St Thomas' Anglican Church	<a href="https://facebook.com/StThomasWinchelsea">facebook.com/StThomasWinchelsea</a>
St John the Baptist Catholic Church	<a href="https://facebook.com/pages/Winchelsea-Catholic-Church/101775670163180">facebook.com/pages/Winchelsea-Catholic-Church/101775670163180</a>
Winchelsea Mainly Music	<a href="https://facebook.com/groups/668500343953191/">facebook.com/groups/668500343953191/</a>
Winchelsea Health Club	<a href="https://facebook.com/WinchelseaHealthClub">facebook.com/WinchelseaHealthClub</a>
Winchelsea Playgroup (School terms only)	<a href="https://facebook.com/groups/551663435367031">facebook.com/groups/551663435367031</a>
Winchelsea Girl Guides	<a href="http://www.guidesvic.org.au/">www.guidesvic.org.au/</a>
Winchelsea/Modewarre Scouts	<a href="https://facebook.com/1stModewarreScouts">facebook.com/1stModewarreScouts</a>
Winchelsea Fire Brigade	<a href="https://facebook.com/winchelseafirebrigade/">facebook.com/winchelseafirebrigade/</a>
Winchelsea SES	<a href="https://facebook.com/groups/WinchSES">facebook.com/groups/WinchSES</a>
Country Women's Association - CWA Winchelsea	<a href="https://facebook.com/pg/CWAWinchelsea/">facebook.com/pg/CWAWinchelsea/</a>
Winchelsea Bowls Club	<a href="https://facebook.com/Winchelsea-Bowls-Club-533783333344345/">facebook.com/Winchelsea-Bowls-Club-533783333344345/</a>
Winchelsea Blues Cricket Club	<a href="https://facebook.com/groups/8999049476/">facebook.com/groups/8999049476/</a>
Winchelsea Blues FC	<a href="https://facebook.com/WinchelseaFNC/">facebook.com/WinchelseaFNC/</a>
WYLD Winchelsea Youth Leisure and Drop in	<a href="https://facebook.com/groups/569737570027065/">facebook.com/groups/569737570027065/</a>
Lions Club of Winchelsea	<a href="https://facebook.com/LionsWinchelsea">facebook.com/LionsWinchelsea</a>
Winchelsea Probus	<a href="https://facebook.com/893535194971083">facebook.com/893535194971083</a>
Winchelsea Golf Club	<a href="https://facebook.com/winchelseagc/">facebook.com/winchelseagc/</a> <a href="https://facebook.com/groups/1324943804676697">facebook.com/groups/1324943804676697</a>





# Notice of AGM

**Winchelsea Community House Inc. No. A6247K**

Notice is hereby given of the Annual General Meeting to be held on Wednesday 16th October, 2024, at 7.00pm in the Shire Hall Building, 28 Hesse St. Winchelsea.

An invitation will be sent to all current 2023 members.

All other interested people are asked to email [manager@winchhouse.org.au](mailto:manager@winchhouse.org.au) so an invitation can be sent.

Membership, which allows attendees to vote, is \$2.00 and payable at the AGM.

## AGENDA ITEMS INCLUDE:

1. Annual reports from co-ordinators & Committee of Management including annual statement of income & expenditure.
2. Nominations called from the floor for Chairperson, Treasurer, Secretary/ Public Officer as well as five (5) Ordinary Members for the Committee.

The Chairperson will allow any business that is relevant to the Annual General Meeting to be brought forward.

*Tony Phelps, Chairperson*

## CONCRETER

Alister Aitken

### No job to big or small

- Driveways - Carports - Crossovers – Footpaths - Sheds Slabs - Colored Concrete – Concrete sealing - Exposed Aggregate – & more -

Call or text for a no obligation free quote

Servicing our local Winchelsea & Surrounding Areas

[alaitken.aa@gmail.com](mailto:alaitken.aa@gmail.com) or Alister - 0411 871 950

A.B.N 47 228 574 460

## Knuckey's Winchelsea

Ph: 5267 2011

Knuckey's have in stock a complete range of batteries to suit tractor, heavy machinery, cars, utes

The largest range of the best oil for your vehicles—**CASTROL**—*'when only the best will do'*

The largest range of V belts. A, B, C, D M Sections Bolts and nuts for all occasions Steel cut to size

## Surf Coast Shire Council postal election

*My council, my vote*



An election will be held for Surf Coast Shire Council.

### Check the mail for your ballot pack

Ballot packs containing voting material will be mailed to enrolled voters from **Monday 7 October.**

This is a postal election only.

If you do not receive your ballot pack by **Tuesday 15 October** please visit [vec.vic.gov.au](http://vec.vic.gov.au) to complete the online replacement form, or call **131 832** to arrange a replacement.

### Candidates

Candidates who have nominated for election are listed in the ballot packs and at [vec.vic.gov.au](http://vec.vic.gov.au)

A photo and candidate statement will also be included if provided by candidates. Responses to a candidate questionnaire, if provided, are available at [vec.vic.gov.au](http://vec.vic.gov.au)

### How to vote correctly

You must complete your ballot paper correctly for your vote to count. Put the number **1** in the box next to the candidate you want to see elected, then number all the other boxes in order of your choice. You must number **every** box and only use each number once.

### How to return your ballot pack

Put your completed ballot paper in the ballot paper envelope, complete the declaration, then post it ASAP using the reply-paid envelope provided, or hand deliver it during election office hours to:

1/1 Haystacks Drive  
Torquay

### Voting is compulsory

Voting is compulsory for all voters who were enrolled at 4 pm on Wednesday 7 August. This includes state-enrolled and council-enrolled voters.

If you don't vote and don't have a valid excuse, you may be fined.

Your completed ballot pack must be in the mail or hand delivered by **6 pm Friday 25 October.**

State-enrolled voters can register for free VoterAlert SMS and email reminders at [vec.vic.gov.au](http://vec.vic.gov.au)

[vec.vic.gov.au](http://vec.vic.gov.au) | 131 832

For enquiries in languages other than English:

\* Arabic (Arabic) 9209 0100 \* Azərbaycanca (Assyrian) 9209 0160 \* Бирма тили (Burmese) 9209 0161 \* 普通话 (Mandarin) 9209 0106 \* 廣東話 (Cantonese) 9209 0101 \* Hrvatski (Croatian) 9209 0102 \* Dansk (Dan) 9209 0193 \* Thai (Thai) 9209 0194 \* ไทย (Thai) 9209 0194 \* Azərbaycanca (Azerbaijani) 9209 0105 \* नेपाली (Nepali) 9209 0163 \* Persian (Persian) 9209 0195 \* မြန်မာစာ (Burmese) 9209 0164

@electionsvic



# SERVICES & ACTIVITIES IN WINCHELSEA

## VLINE TRAIN SERVICES

### TO MELBOURNE:

Mon - Fri 6:41 am, 7:57am, 11:14am, 2:08pm, 7:23pm  
 Sat - Sun 9:26am, 1:30pm, 7:18pm

### TO WARRNAMBOOL:

Mon - Fri 8:56am, 11:55am, 2:50pm, 5:27pm,  
 6:45pm, 8:50pm  
 Sat - Sun 8:47am, 2:46pm, 8:34pm



## WINCHELSEA GIRL GUIDES

Our Unit meets at the Catholic Church Hall,  
 Harding St Winchelsea each Monday 4.30pm-6pm  
 All girls 5yrs- 15yrs Welcome!  
 Contact Yvonne Orchard 0448 672 630  
 or Emily LaPorte Phone 0476 719 381



## COUNTRY WOMEN'S ASSOCIATION

7pm second Wednesday of month  
 Winchelsea Senior Citizens' Hall



## 1st Modda & 1st Winchelsea SCOUT GROUP

**Joey's:** Tuesdays of school term 5-6pm  
**Cubs:** Mondays of school term 6:30-8pm  
**Scouts:** Tuesdays of school term 6:30-8:30pm  
 All at Modewarre Hall, Cape Otway Rd  
**Venturers:** Wed at Walton's Rd Venturer Den  
 Contact Marie McPadden 0409 330147

**Join us.** *A role for everyone*



Nationally accredited training to help our community.  
 Pop in to meet your crew **Wednesdays 7:30pm**

Winchelsea Unit 325 Moorley Drive 132 500



## BUS TO THE HUB

For reservations on the weekly bus  
 to the Eastern Reserve Hub,  
 please phone 52671202.

## Winchelsea and District COMBINED PROBUS CLUB



Senior Citizens Rooms,  
 Harding St, Winchelsea.  
 New members always welcome.  
 Enquiries Lorraine 0417 467 927

## SURF COAST MOBILE LIBRARY

**Hesse St, Fridays, 2pm-5pm**  
 Surf Coast Mobile Library  
 parked in Hesse Street (outside Shire Hall)  
 Fridays 2:00 and 5:00pm unless it is a Public Holiday.



**SOCIAL BRIDGE**  
 Every Tuesday 10.30 am - 1.00 pm  
 Senior Citizens Centre  
 36 Harding Street Winchelsea  
 New players always welcome  
 Contact Elaine Atkinson 0458009616

## WINCHELSEA TAXI

0429 672 888 or 5267 2888  
 Wheelchair accessible  
 10 seater bus available.

## WINCHELSEA TRANSFER STATION 55 Cressy Road, Winchelsea

Tuesday	2pm-4pm	Saturday	1.30-3.30pm
Thursday	2pm-4pm	Sunday	9.30-12.30pm

Closed on Christmas Day,  
 but open on other public holidays  
 that fall during their normal operating hours.  
[www.surfcoast.vic.gov.au/disposalsites](http://www.surfcoast.vic.gov.au/disposalsites)



## WINCHELSEA PLAYGROUP

Every second Thursday 10am-12pm  
 St Thomas Anglican Church Hall  
 cnr Barwon Tce and Hopkins St, Winchelsea  
 Contact: Danni Menzies 0432019944  
[winchelseaplaygroup@gmail.com](mailto:winchelseaplaygroup@gmail.com)  
 Facebook - Winchelsea Playgroup 2019  
**New families welcome**



**Winchelsea Community House Inc.** A6247K  
28 Hesse Street, PO BOX 75, WINCHELSEA, Vic. 3241  
Phone: (03) 5267 2028 Email: [manager@winchhouse.org.au](mailto:manager@winchhouse.org.au)  
ABN: 48 932 340 254

### FIRST AID & CPR TRAINING

Saturday 9<sup>th</sup> November, 2024

Winchelsea Shire Hall

Full First Aid 8.30am - 2.30pm \$170

CPR Only (8.30am-10.30am) \$70

Bookings - [reception@winchhouse.org.au](mailto:reception@winchhouse.org.au)

### Certificate III Early Childhood Education & Care

We are excited to be able to run this training commencing on the **7<sup>th</sup> October 2024**.

For more information and to Enrol contact

[reception@winchhouse.org.au](mailto:reception@winchhouse.org.au)

### Carer's Corner (NEW)

Come along, connect with other carers, have a cuppa and a chat, and share useful resources.

**25th Oct**

**11.00am – 12 noon**

At the Winchelsea Shire Hall  
Collection tin for donations.

### Tai Chi

Friday Mornings 9.00am – 10.00am

In the Helen Verity Room,  
Winchelsea community house

**Next Class 11<sup>th</sup> Oct**

\$10 per session

Let us know if there is a Program, Activity or Event you would like to see at Winchelsea Community Centre or the Shire Hall.

**FOLLOW US ON FACEBOOK**

<https://www.facebook.com/winchelseacomunityhouse>

### CHATTY CAFÉ

“Sip, Chat, Share, Care”

**Friday 4<sup>th</sup> Oct**

Winchelsea Shire Hall

**FREE, Everyone Welcome.**

Collection tin for donations.

## WINCHELSEA SHIRE HALL

Host your next event right here in  
the heart of Winchelsea.



BEAUTIFUL HISTORIC BUILDING

FULLY EQUIP COMMERCIAL  
KITCHEN WITH ESPRESSO  
MACHINE

WELL-LIT AND HEATED WITH  
PLENTY OF SPACE AND OFF-  
STREET PARKING

[shirehall@winchhouse.org.au](mailto:shirehall@winchhouse.org.au)

Phone: 03 5267 2028

### Crochet Group

Every Second Saturday

1.30pm in the Winchelsea Community Centre

**Next group is on 21<sup>st</sup> September**

\$5 per class, book your spot at  
[reception@winchhouse.org.au](mailto:reception@winchhouse.org.au)

### Breast Cancer Support Group

Winchelsea community members are seeking anyone interested in being a part of a breast cancer support group to meet regularly for a cuppa and a chat. Please contact [reception@winchhouse.org.au](mailto:reception@winchhouse.org.au) for more information.

The Winchelsea Community House aims to provide a space to connect with others in our community through a wide range of programs and activities. There are many opportunities to learn new skills or further develop existing ones for fun, for your resume or for your confidence and mental health.

# Rare 10-Star Home Headlines Sustainable House Open Day

Geelong Sustainability is excited to announce the return of Sustainable House Day Geelong and surrounds. Running throughout October, this year the series of events includes a Seminar, Industry Breakfast and Webinar, as well as the highlight of the month, Sustainable House Open Day, featuring exemplary sustainable homes across Greater Geelong, Surf Coast and Queenscliff,

Sustainable House Day Geelong and surrounds, is the only time of year where homeowners open their doors, offering attendees the chance to see firsthand how sustainable living can be achieved. Participants will not only view inspiring homes, but also connect with homeowners and experts who can provide practical advice on implementing energy efficiency technologies and sustainable practices into their own homes

This year, eight remarkable homes are open to the public featuring cutting-edge technology, energy efficiency, sustainable design and innovative retrofits.

One of the four properties is in Modewarre and another in Anglesea

“Sustainable House Day is the highlight of our events calendar”, says Dan Cowdell, CEO of Geelong Sustainability, “and this year we’re excited to be showcasing a brand new, 10-star energy rated home! With only a small number of 10-star homes in Australia, this is a rare opportunity to see first hand what goes into a build of this standard. As well as this special home, we have a great cross-section of homes on display including innovative Passivhaus designs, inspiring retrofits and renovations all-electric, and a pre-retrofit home for those interested in understanding energy audits and sustainable home improvement options. I’d encourage you to head to the website to read about the homes being showcased this year, as they are a good example of what can be accomplished. With experts on hand to show you around, you’re guaranteed to learn and be inspired.”

author of the recently released, My Efficient Electric Home Handbook, will delve into practical strategies for reducing home energy consumption and costs.

## Sustainable House Open Day

The event culminates on Saturday, 26 October with the Sustainable House Open Day, where attendees can visit a variety of sustainable homes from 10.00am to 5.00pm. This is an amazing chance to explore homes that exemplify the latest in sustainable living

For more details and bookings, visit: [geelongsustainability.org.au/shd2024/](http://geelongsustainability.org.au/shd2024/)

The addresses of the open house properties will be disclosed a week from the event.



(Above) Modewarre 10-star home

(Below) Anglesea Passivhaus



## Sustainable House Day Seminar

Kicking off the month, the Seminar will be held on Saturday 12 October at the Geelong Library and Heritage Centre. The seminar will feature the launch of MOTilVES, an innovative online sustainable design assessment tool developed by Tom Keel and Associate Professor Ameeta Jain from Deakin University

Other speakers include David Arnold from Murrnong Farm, discussing permaculture strategies for property resilience and sustainable food systems. And, Georgina De Beaujeu from Gardens for Wildlife, offering guidance on creating wildlife-friendly gardens that enhance biodiversity.

## Webinar with Tim Forcey

Energy efficiency expert and author, Tim Forcey, will present a special webinar on Tuesday, 22 October. Mr Forcey, the

**OTWAYS PRODUCERS FESTIVAL**

LOVE LOCAL

ALL WELCOME

**Sunday 20 October 2024**  
9.30am-3pm  
Colac Showgrounds

TASTE THE BEST OF THE OTWAYS  
IN ONE PLACE.

Enjoy locally-grown food, drinks, flowers & fibre with live music, demonstrations, market stalls and informative speakers.

PROUDLY PRESENTED BY

**OTWAY HARVEST TRAIL**

\$2 ENTRY FEE

For more info go to [www.otwayharvesttrail.org.au](http://www.otwayharvesttrail.org.au)

We'd love to see you!

**WINCHELSEA PLAYGROUP**

Each Thursday during school terms.  
Come along between 10AM - 12PM.

Check out our Facebook Page for more information about the happenings of each session.

Playgroup Leader - Danni Menzies

Email: [winchelseaplaygroup@gmail.com](mailto:winchelseaplaygroup@gmail.com)

**St. Thomas's Hall,  
27-29 Barwon Terrace,  
Winchelsea VIC 3241**

**\$5 PER FAMILY**  
**INCLUDES MORNING TEA & HOT DRINKS FOR CAREGIVERS**

Scan to be part of our Facebook Group

**Water Supply Specialists**

WATER SOLUTIONS

74 Dennis Street, Colac  
5231 1861

ALL THINGS WATER:

- PUMPS - PIPES
- FITTINGS - TANKS
- POOL CHEMICALS
- IRRIGATION
- WATER PURIFICATION
- SOLAR - REPAIR

Facebook and Instagram icons, QR code

**Green Lead Electrical**  
Connecting you to a greener future  
MELB 23018

0467 097 101

**Servicing Geelong & the Surf Coast**

Specialising in all residential electrical work including:

- Switch board & lighting upgrades
- Outdoor lighting
- Electrical safety checks
- Energy efficient LED lighting
- Ceiling sweep fans & ventilation
- Energy saving advice

Phone Martin Wilkinson:  
**0467 097 101**  
[greenlead@outlook.com](mailto:greenlead@outlook.com)

1132268-CG18-14

**Enrol Now for Term 4 Swimming**

Experience the difference Heathers Swim School can make for your child's swimming. 3 pools especially designed to teach babies up to school-age children in the Colac area.

Heated to 35 degrees with small class sizes and a family-friendly environment make us different from all others. Heather Swim School is the ideal venue for all you child/children's learning needs. Get in contact and join our family today or come in to see us in person.

Location: 107 Main Street, Elliminyt Phone: 5231 5793  
Email: [heathersswimschool@gmail.com](mailto:heathersswimschool@gmail.com)

**Here for your Vitality. Care for the Whole Family**

Chiropractic Care for:

Pain - Prevention - Performance  
Nervous System Care - Sleep - Wellbeing  
Women's Health - Paediatrics - Vitality  
Stress & Anxiety - Holistic Healing

Facebook and Instagram icons, [www.onebodychiropractic.com.au](http://www.onebodychiropractic.com.au)

03 52672240 Shop 4/21 Hesse St Winchelsea



# R.A.K. DAVIS & SONS

## CARTAGE CONTRACTORS

WINCHELSEA

SUPPLIER OF ALL QUARRY MATERIALS, TRUCK HIRE

CARTAGE OF GRAIN, LIME, GYPSUM & SUPER

LANDSCAPE & GARDEN SUPPLIES

56 WILLIS ST, WINCHELSEA

Ph – 5267 2094

Ryan – 0438 672 281

email: rakdavissons@gmail.com

## FREE WEBINAR - Deep Nature Connection: Caring For Nature In Crisis

*'We cannot protect something we do not love, we cannot love what we do not know, and we cannot know what we do not see. Or hear. Or sense' – Louv.*

Nature needs us more than ever – and we need nature. As we face the increasing biodiversity crisis fuelled by environmental destruction and climate change, deepening our connection with nature is vital. By deepening our understanding of nature, we can better protect it.

How do we encourage more people to connect with nature? How do we inspire people to care? And how does this relate to private land conservation and restoration efforts across Victoria and Australia more broadly?

On 17 October, 7pm AEDT, join us for a free webinar on Zoom to hear from three experts whose work focuses on human-nature connection: Lily van Eeden, Claire Dunn and Fiona Murdoch.

Register at [jo.my/naturecrisiswebinar](https://jo.my/naturecrisiswebinar)

Lily van Eeden (below, right) is a conservation scientist specialising in how people interact with nature and how values and social norms shape our attitudes and behaviours towards nature. Lily currently lectures at RMIT in environmental science.



Claire Dunn (above, left) is a writer, speaker, barefoot explorer, rewilding facilitator and founder of Nature's Apprentice. Claire believes that a reclaiming of our ecological selves and belonging is key to regenerating wildness on the planet.



- ❑ LOG BOOK SERVICE
- ❑ AUTO ELECTRICAL
- ❑ TOWING
- ❑ AIR CONDITIONING
- ❑ CLUTCH & BRAKES
- ❑ TYRES
- ❑ WHEEL ALIGNMENT
- ❑ BATTERIES

### CAR, TRUCK REPAIRS & Roadworthys

PH: 5267 3001

Mob: 0417 137 457

HESSE  
RURAL  
HEALTH

### Volunteers Required

Volunteers are one of Hesse's greatest assets, playing a vital role to enhance the quality of Hesse services & client experiences.



- Bus Driver
- Outings Assistant
- Resident Visitor
- Events & Activities Assistant
- Group Wheelchair Walkers
- Appointment Escort
- Social Support Activities
- Gardening - Winchelsea
- Hospital Auxiliary Member
- Consumer Advisory Committee
- Marketing & Fundraising Committee

For more information please contact Hesse on (03) 5267 1200 or via email [reception@hesse.vic.gov.au](mailto:reception@hesse.vic.gov.au)



# FREE COMMUNITY EVENT

## ANIMAL FARM

### KIDS ACTIVITIES

#### JOIN US AT THE WINCHELSEA MARKET



**OCTOBER 6TH**  
**SUNDAY 9 TILL 1PM**

Community Bank  
Winchelsea & District

 Bendigo Bank





**Moriac Veterinary Clinic**  
**0447 781 089**  
 PHONE 24 HOURS  
 784 Hendy Main Road Moriac  
 info@moriacvet.com  
 www.moriacvetclinic.com.au  
 HOURS // Monday - Friday: 8am - 5pm

Commercial | Industrial | Domestic

**HAMILTONS**  
 Truck & Bobcat Hire  
 Give Aaron a Call  
**0438 438 623**



**CHARLES STEWART**  
 rmanetwork Accredited Member

Charles Stewart & Company are leading livestock and real estate service providers covering Victoria's south west

	<b>LIVESTOCK</b>
Jamie McConachy	0418 522879
Peter McConachy	0408 522878
Matt Nelson	0428 315400
Gerard Bohan	0400 005541
Lachie Barclay	0438 346291
John Thornton	0408 526367
Dougal McIntyre	0439 575612
Ross Spitty	0419 539717
	<b>REAL ESTATE</b>
Michael Stewart	0418 520467
Daryl Osborne	0419 388341
Anthony McDonald	0418 593597
Gerard Bohan	0400 005541
Stephen Lugg	0417 556098
Josh Lamanna	0417 586032

Office  
 56 Bromfield Street, Colac  
 www.charlesstewart.com.au




**HESSE RURAL HEALTH**




Acute Care\*  
 Urgent Care\*  
 Residential Aged Care\*  
 Community Nursing  
 Dietetics  
 Physiotherapy  
 Occupational Therapy

Diabetes Education  
 Social Support Groups  
 Counselling  
 Home Care  
 Health Promotion  
 \* services from Winchelsea only

www.hesseruralhealth.com.au  
 P: (03) 5267 1200 E: reception@hesse.vic.gov.au

eldersrealestate.com.au


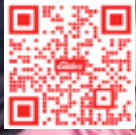


**You're in Safe Hands With Peter Lindeman**  
**Delivering Exceptional Results for Over 20 Years**

If you're thinking of selling a Rural or Lifestyle acreage property on the Bellarine, the Greater Geelong region or beyond then think Peter Lindeman. Peter spent 20 years managing farms before jumping the fence to sell them; and over the last 23 years he's helped over 350 vendors achieve extraordinary results, more often than not surpassing their expectations. Why not let Peter show you how he can help you achieve an outstanding result for your property.

**Peter Lindeman - 0418 525 609**  
**RURAL AND LIFESTYLE SALES MANAGER - ELDERS GEELONG**

E: peter.lindeman@elders.com.au

**HF RICHARDSON**

PROPERTY

Servicing all your real estate needs  
 Ken McDonald **0418 524 150**



**Residential | Rural Lifestyle | Agricultural Farms**





# M&B WOOD PLUMBING

Call Matt - 0418 319 357  
[mbwoodplumbing.au](http://mbwoodplumbing.au)

## Servicing Winchelsea & surrounds

- General maintenance & blocked drains
- Gas fitting & hot water service upgrades
- New homes & renovations

## NO MATTER WHAT YOUR PROBLEM, DODDS ELECTRIX CAN DEFUSE THE SITUATION.

RURAL, INDUSTRIAL, COMMERCIAL DOMESTIC  
 PHONE 0438 887 360  
 EMAIL: DODDSY@FASTMAIL.FM  
 PO BOX 36 BIRREGURRA, VICTORIA 324  
 REC: 17520 ABN: 64 581 250 880

# M&T BUILDING & CONSTRUCTION

NEW HOMES | EXTENSIONS | RENOVATIONS Ph: 0409 433 687  REGISTERED Building Practitioner

## AlfordBuilt

*New Homes, Renovations, Extensions, Bathrooms, Decks & Pergolas*

0408 583 362  
[stephen@alfordbuilt.com.au](mailto:stephen@alfordbuilt.com.au)



REGISTERED Building Practitioner

## NATURAL GAS CONNECTIONS

### M. & L DRAYTON PLUMBING SERVICES

#### YOUR LOCAL LICENSED

- PLUMBERS (24356)
- GAS FITTERS
- GAS CONVERTERS
- CARBON MONOXIDE TESTING

MARK 0428 520 142

## Lupton BUILDERS

SPECIALISING IN QUALITY



REGISTERED Building Practitioner

- NEW HOMES
- ALTERATIONS
- CARPORTS
- BATHROOMS
- EXTENSIONS
- DECKS
- VERANDAHs
- WINDOW REPLACEMENTS
- RENOVATIONS
- PERGOLAS
- RE-GLADS

LEIGH LUPTON  
 0438 840 104

CHRIS LUPTON  
 0407 681 514

[LEIGHLUPTON17@GMAIL.COM](mailto:LEIGHLUPTON17@GMAIL.COM)

Est. 1977

## GREAT Bundle Deal on Bosch Hot Water...

Buy any Bosch Blueetooth continuous flow hot water model - 16Litre, 20Litre or 26Litre and Receive \$100\* in Elgas bonus LPG gas credits



\*For more details: [www.elgas.com.au/appliances/boschcpflflow-16-20-26-lpg-bundle-sale](http://www.elgas.com.au/appliances/boschcpflflow-16-20-26-lpg-bundle-sale)

AND... for new customers, an additional \$80 WORTH OF LPG GAS CREDITS\*\* when you open a new LPG Gas account with Elgas



Ask about the Elgas Easy Payment Plan - 12 months interest free\*\*\* on selected LPG appliances  
 \*\*\*Further details can be viewed at: [www.elgas.com.au/epp](http://www.elgas.com.au/epp)

Automatic tanker gas bottle refill OR gas bottle exchange refill is available for home or business...  
 Call today or visit our website for our many customer benefits and latest offers

131 161  
[www.elgas.com.au](http://www.elgas.com.au)

ELGAS





Located at 36 Main Street, Winchelsea 3241

For any enquires or bookings please contact the clinic on 5292 8028.  
Or visit our website: [www.winchmc.com.au](http://www.winchmc.com.au)

Opening Hours:

Monday - Friday 8:00am - 5.00pm  
(Monday Evening Clinics available and selected Saturdays)



Our clinic accepts online bookings via the app called HotDoc.  
Download the app on the App Store or Google Play or head to our website.

# WINCHELSEA LIONS CLUB

## PAPER RECYCLING

Paper depot rear of Senior Citizens Rooms  
Harding Street  
**NEWSPAPERS, MAGAZINES, PHONE BOOKS WANTED**



**RAISING FUNDS FOR OUR TOWN & DISTRICT**  
0408 520 606



Winchelsea and District

## Ebony knows banking

If you need help with yours, you need to meet Ebony.

Ebony shares her knowledge of banking so you can achieve what you want from life.

And, she can meet you when and where it suits you; at the branch, over the phone, or via video call.

**If you need help with your banking, call Ebony Berg, Loan Specialist on 5267 3189 or search Bendigo Bank Winchelsea.**

[bendigobank.com.au](http://bendigobank.com.au)



Bendigo and Adelaide Bank Limited ABN 11 068 049 178, AFSL/Australian Credit Licence 237879. A1415950 OUT\_33710515

### Winchelsea Men's Shed



For The Community

51 Hesse Street

Every Wednesday from 9:30am

New members always welcome

For more detail contact:  
Ray Atkinson (Co-ordinator)  
0407 839 139

or  
[winchmensed@gmail.com](mailto:winchmensed@gmail.com)

Need a job done?  
Woodworking jobs,  
furniture repairs, small jobs.  
Drop in and talk to us.



### WINCHELSEA LIONS CLUB

ARE SELLING ENVIRONMENTALLY FRIENDLY SHREDDED PAPER COMPRESSED BRICKS FOR YOUR FIRE  
SAVE ON THE RISING COST OF WOOD BY INCLUDING PAPER BRICKS AS WELL

PACKET OF 4 ROARS (BRICKS) \$5  
ROLL OF PURRS (SMALL ROLLS) \$2

AVAILABLE AT LIONS PAPER SHED  
36 HARDING STREET  
SATURDAY MORNINGS  
10AM - 12 NOON  
FROM 4<sup>TH</sup> MAY UNTIL SOLD OUT

EFTPOS AVAILABLE  
CASH ACCEPTED



# Winchelsea Cricket Club Dinners

When: Thursday 10th  
October

Where: The Hub - Eastern  
Reserve

Time: Service starts at  
6.30pm



# ROUND ONE

## A-Grade



VS



5th October



12.30PM

Ervin Reserve 1



- Domestic and Commercial hire equipment • Industrial welding gas
- Digging and Earthmoving equipment • New trailers and trailer repairs
- Firewood • Stockists of Royal Oil Lubricants products
- LPG for domestic and commercial requirements

Give Chris and the Team a call on **5232 1177** or email [info@colachire.com.au](mailto:info@colachire.com.au)  
[www.colachire.com.au](http://www.colachire.com.au)  
**101 Wallace St Colac 3250**



# Winchelsea Star

ISSN 2202-6851



9 772202 685002

Since 1977

## Winchelsea Taxis is now Surfcoast Taxis

Our fleet of vehicles are growing to all late models and we are covering an extended area including Winchelsea, Colac, Bannockburn, Inverleigh, Great Ocean Road and Geelong.  
 We have a fleet of 10 seater Maxi Vans, all with capacity to carry wheelchairs.

**Surfcoast Taxis Pty Ltd**  
**All Bookings: 0408 325 992**  
**Fax: 5267 2699**  
**Email: [bannotaxis@gmail.com](mailto:bannotaxis@gmail.com)**  
 (Admin or Stan 0429 672 888)  
 66A Batson Street  
 Winchelsea 3241



Accounts NDIS provider. TAC, DVA etc  
 NDIS provider number 4050001044  
 NDIS provider number 4050001048



## DEFIBRILLATORS IN WINCHELSEA

### Accessible to the public 24 hours a day

The Winchelsea Lions Club has compiled a list of public access defibrillators in Winchelsea. Four more have been installed at Winchelsea Primary School, Winchelsea Bowls Club Hesse St, the netball courts Eastern Reserve Hopkins St and at the Globe Theatre near the side entrance. If anyone knows any others that have 24 hour public access, please let Linda Carter know on 0439 817 263.

			
Bendigo Bank 11 Main Street	Ambulance Victoria 33 Willis Street	Uniting Church 33 Hesse Street	Senior Citizens 36 Harding Street
			
Men's Shed 51 Hesse Street	Winchelsea Golf Club 13 Anderson Street	Hesse Rural Health 8 Gosney Street	Wurdale Memorial Hall 220 Wurdale Road

