

# KINGSLEY MONTESSORI SCHOOL ANNUAL IMPACT REPORT

2024-2025



KINGSLEY  
MONTESSORI  
SCHOOL

## Securing Our Foundation

Honoring Steve Farley's leadership and enduring impact

## Fueling the Mission

Celebrating the generosity and partnership that bring our values to life each year

## Forging the Future

A glimpse at the leadership and vision that will define our next era

**The Mission of Kingsley Montessori School is to engage the mind, hands, and heart of each child to nurture resilient explorers, confident learners, and empathetic citizens.**

**Kingsley's Vision Statement:**  
**Academic Excellence.**  
**Empowered Learners.**  
**Kindhearted Leaders.**



### **SCHOOL ADMINISTRATIVE TEAM**

**Kim Barrett**, Director of Early Childhood

**Francis Cash**, Chief Financial & Operating Officer

**Katia Christakis**, Director of Auxiliary Programs

**Ellen Doonan**, Director of Development

**Becca Edwards**, Director of Administrative Operations

**Steve Farley**, Head of School

**Amanda Donigan Gibbs**, Director of Admissions & Enrollment Management

**Claire Harris**, Director of Elementary

**Tara Hofherr**, Associate Head of School & Director of Next School Counseling

**Jamie Lacroix**, Director of Marketing & Communications

**Julie Perlow**, Director of Student Life

**Courtney Tomaselli**, Chief Advancement Officer

**Deb Tyrrell**, Human Resources Consultant

### **THIS IS A PUBLICATION OF THE KINGSLEY ADVANCEMENT OFFICE**

Ellen Doonan, Elizabeth Dunbar, Grace Hoefs, Jamie Lacroix, Courtney Tomaselli

### **OTHER CONTRIBUTORS**

Marianne Salza, *Photographer*

# Table of Contents

**Leadership Reflections**  
Pages 3–5

**Honoring Steve Farley**  
Pages 6–9

**Strategic Plan Update**  
Pages 10–12

**Faculty & Staff Years of Service**  
Page 13

**Mathematics Curriculum**  
Pages 14–15

**Looking Back: 2024–25 Events**  
Pages 16–19

**Gifts of Time**  
Pages 20–22

**Financial Highlights**  
Page 23

**Gifts by Level**  
Pages 24–26

**Gifts by Constituency**  
Pages 27–31

**Board of Trustees: New & Departing**  
Pages 32–33

**Graduates & Alumni**  
Pages 34–41

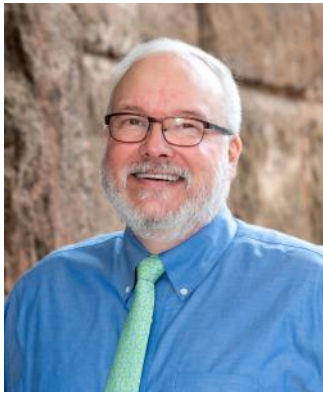
**Looking Ahead with Tara Hofherr**  
Page 42

## PLEASE NOTE

Every effort has been made to ensure this report's accuracy. If you find errors or omissions, please notify the Advancement Office at 617-226-4902 or [advancement@kingsley.org](mailto:advancement@kingsley.org) so we can correct our records and amend the online document and future publications.



# A Letter From The Head of School



Dear Kingsley Families and Friends,

This publication marks a meaningful moment for our school: celebrating what we have accomplished together while setting the stage for the future. As I

enter my final year as Head of School, I am both deeply grateful for all that we have built and also energized by the opportunities that lie ahead.

Our community is thriving in every dimension. The dedication of our faculty and staff continues to anchor Kingsley's success, and the joy our students bring into classrooms each day is the clearest expression of our mission in action. Guided by our Strategic Plan, we are strengthening academics, deepening connections, and securing Kingsley's long-term vitality.

This 2024–25 Impact Report reflects a year of growth rooted in our permanent home at 26 Exeter Street. More than a building, Exeter represents permanence, possibility, and belonging. It is a daily reminder of what philanthropy makes possible and of our shared responsibility to steward Kingsley's future. With this home secured in perpetuity, we have expanded programs, welcomed more students, achieved full accessibility, and strengthened the sense of community that defines us.

This year was also remarkable for philanthropy. Thanks to your generosity, we raised \$1,324,975, including a record-breaking \$1,260,975 for the Annual Fund. These results continue a multi-year trend of growth in both participation and dollars. Every contribution directly supports our

teachers, programs, and facilities—ensuring each student experiences the full richness of a Kingsley education now and for years to come.

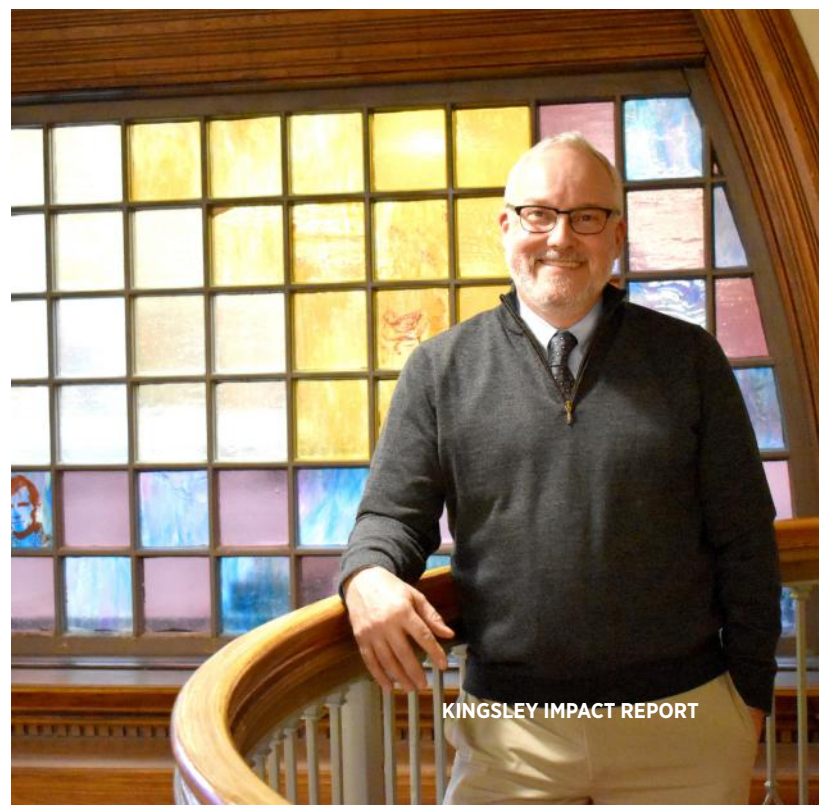
Looking ahead, I am confident in Kingsley's trajectory. Our community is well positioned for a seamless transition when Associate Head of School, Tara Hofherr, becomes Head of School in July 2026. The enduring values of academic excellence, empowered learning, and kindhearted leadership will continue to define Kingsley.

Thank you for your unwavering belief in our mission and for the many ways you invest your time, energy, and resources in our students. Together, we are building a school that honors its past while boldly embracing its future.

With gratitude,

A handwritten signature in black ink that reads "Steve Farley". The signature is fluid and cursive, with a long horizontal line extending to the right.

Steve Farley  
Head of School  
Kingsley Montessori School





# A Letter From The Board Chair



Dear Kingsley Friends,

It is a joy to celebrate the countless people whose generosity, energy, and spirit made the 2024-2025 school year so successful. On behalf of the Board of Trustees: thank you.

Our Annual Fund Co-Chairs—Beth and John Breslin and Amy and Andrew Szczurowski—brought energy, and dedication to every aspect of our fundraising efforts. From the spirited kickoff on the Sixth floor of Exeter (complete with a special guest appearance by the Kingsley Lion!) to the warm and lively Donor Drinks hosted by the Schlegel/Schoenberg, Sinicropi-Yao/Sattelmair, and Donovan-Chien families, these activities brought our community together and fueled record participation. Nearly every parent, faculty member, and staff member contributed, alongside grandparents, alumni, alumni families, trustees, and friends of the School.

We applaud the Development Committee and faculty Advancement Advisors, whose creativity, commitment, and good humor ensured every event and outreach effort was successful and mission-driven. Their efforts culminated in a historic April Giving Day: Kingsley Community—you raced to the finish and made history. Together, you unlocked \$157,000 in challenge funds and achieved several milestones, including our biggest Giving Day and highest-ever Annual Fund total.

The Shindig—hosted by Liz Scholder at the Cambridge Multicultural Arts Center—reminded us what sets Kingsley apart. More than merely a great party (though it was certainly that), the Shindig brought parents, alumni, faculty, and staff together

to celebrate our shared mission. With live music from The Muse Band and performances from alumni artists Lucy Jacobs '24 and Maya Carlson '24, the evening was filled with joy, connection, and Kingsley spirit. Events like these strengthen the bonds across the entire community and help us better support our students. It was, in every sense, a party with a purpose.



Finally, we celebrate Kingsley faculty and staff, who uphold our core academic principles while embracing opportunities to innovate and connect. Their care for students, families, and each other is a true demonstration of kindhearted leadership. We sincerely thank this community for fueling our mission, strengthening our relationships, and continuing to invest in Kingsley's bright future.

With appreciation,

A handwritten signature in black ink, appearing to be 'Nik Shah'.

Nik Shah P'28 '29 '31  
Board of Trustees Chair

A handwritten signature in black ink, appearing to be 'Laura Nielsen'.

A handwritten signature in black ink, appearing to be 'Kristin Wallace'.

Laura Nielsen P'28 '32 and Kristin Wallace P'22 '27  
Development Committee Co-Chairs

# Celebrating Outgoing Head of School (2018–26)

# Steve Farley

For eight years, Steve Farley has guided Kingsley with vision, courage, and care. His tenure has been marked by stability and growth—anchored in collaboration and respect for all members of the community. Under his steady leadership, Kingsley has expanded and strengthened in every dimension. In his final year at Kingsley, we thank him for his service and celebrate his impact on our school.



### **Elevating the Academic Journey**

Steve unified Lower and Upper Elementary into a seamless, transformational journey for Grades 1–6. Updates included new literacy and math curricula, an expanded Early Childhood program at Fairfield, and enhanced Athletics and Auxiliary offerings. Faculty development flourished through a Montessori coaching model that strengthened professional capacity and supported record retention. Transparent structures for salary and years-of-service recognition reinforced a culture where educators feel valued and able to grow.

### **Securing Our Permanent Home**

One of Steve’s first questions upon arriving was, “What are our plans to purchase Exeter?” Thanks to his vision and the community’s commitment, Kingsley acquired 26 Exeter Street in January 2024, joining 30 Fairfield Street to bridge our campus and secure our long-term presence in the Back Bay. As Steve said of the milestone, “We can now look forward, with certainty, to generations of students and families benefiting from a Kingsley education, and to our vibrant neighborhood and city benefiting from their contributions for years to come.”

**Viva Hyatt P’20 ’22**  
Board of Trustees (2014–2023)

I remember Steve’s first interview as a candidate for Head of School. We were immediately impressed by his grounded character, his ability to connect, his wisdom on education, and his thoughtfulness. We were confident he would be able to lead the school through any challenges, and indeed he did—more than once!

### **Defining Purpose**

Steve led the creation of Kingsley’s School Mission and Vision Statements, as well as our DEI mission. Under his leadership, the School launched its first comprehensive Strategic Plan in more than 15 years. *See more on the Strategic Plan on pages 10–12.*

### **Smart Solutions for Busy Families**

Kingsley has taken concrete steps to make family life in the city more navigable. The school introduced a complimentary Early Arrival option, created the Toddler After School program, and launched a long-requested Student Lunch Delivery program—all designed to ease daily logistics and support families in practical ways.



**Progress Through Uncertainty**

During the global pandemic, Steve prioritized student health and learning outcomes. The school opened a temporary third campus at 580 Harrison Avenue and invested in upgraded learning tools, building improvements, and on-campus health support to meet families’ needs.

**A Stronger Future Through Community Partnership**

Since Steve’s arrival, Kingsley’s net assets have nearly tripled, strengthening the school’s capacity to provide a transformative education. Tuition assistance allocations have nearly doubled since Steve’s first year here, reflecting his commitment to accessibility.

The acquisition of 26 Exeter Street was fueled by extraordinary community generosity, raising \$4,867,115—outpacing any prior Kingsley fundraising effort. The most recent Annual Fund raised over \$1.25 million, another historic milestone demonstrating the power and commitment of the community. Families have witnessed both the school’s dedicated investment in their children and Steve’s responsiveness to the community’s needs.

These achievements lay a strong foundation for the future. Kingsley remains a Montessori-rooted, mission-driven school committed to academic excellence and whole-child development. Thanks to Steve Farley’s leadership and lionhearted belief in Kingsley, the school’s future is secure and full of promise. Bravo, Mr. Farley, and thank you.

**Tara Jordan P’20 ’22**  
 Board of Trustees (2016–2024)  
 Board Chair (2020–2024)

From his first day, Steve led with steadiness, collaboration, and his signature optimism. These qualities anchored our community through times of great challenge and growth. He steered Kingsley through the pandemic with calm resolve, shepherded a strategic planning process, and turned those strategic initiatives into reality, including the purchase of our permanent home.

Steve has always understood that a school’s greatest strength lies in its people. He has been a tireless champion for the teachers, recognizing that their dedication and talent are what bring Kingsley’s mission to life. His commitment to the continuous growth of himself, his team, and the entire faculty and staff has elevated the institution.

Above all, Steve’s decision-making has been guided by an unwavering focus on what is best for our students. His leadership has been defined by kindness, integrity, and a strong belief in the power of a Montessori education.

For his service, his big heart, and his bold vision, we are grateful.



## Student Takeover:

# Mr. Farley Interview

Sixth graders Emily, Brooks, Elliott, and Elio—reporters from the *Kingsley Times* Newspaper Enrichment Class—interviewed Mr. Farley about his experiences, interests, and the School's future—along with a couple of current trends. To honor his eight years as Head of School, we chose eight standout moments from their conversation.

01.

### WHAT IS YOUR JOB AND WHAT ARE YOUR RESPONSIBILITIES AT KINGSLEY?

My responsibilities at Kingsley really cover everything that happens here—from soup to nuts. I oversee and support teachers when they're putting together programs or thinking about what they want to teach, and I support all of you as students. I also work on recruiting new students and families to join us, and once they're here, I make sure they're happy and want to stay. I even help maintain connections with alumni after they've left. Every year, we have to raise about 10% of our budget beyond what we get from tuition, so that's part of it, too. On a more day-to-day level, I do things like lunch duty, reading in classes, and meeting with my Sixth Grade advisees.

02.

### WHAT FIRST BROUGHT YOU TO KINGSLEY?

What brought me here was really my desire to work in a progressive elementary and preschool setting. A progressive school focuses on what students want to know and understand—it centers the students. You might have heard your teachers say “follow the child.” That's a phrase Montessori teachers use often. In more traditional schools, teachers spend a lot of time telling students what they should know, but here, we trust you to ask the questions and our job is to help you find the answers.

03.

### WHY DID YOU DECIDE TO LEAVE THE SCHOOL?

I felt like I had accomplished many of the things I set out to do when I came here. When I arrived, I found an incredible school with incredible people that needed better systems and support—ways to retain teachers, improve compensation, and strengthen fundraising. Fundraising might sound odd in education, but it's essential. At Kingsley, we've nearly doubled the amount we raise each year—our goal this year is \$1.3 million. One of the biggest accomplishments has been helping the school buy this building to secure Kingsley's future. I'm 56 now, and I have another 10 to 15 years of work ahead, so it felt like a good time to pursue something new.

04.

### WHAT ARE YOUR NEXT STEPS FOR KINGSLEY?

This year, my main focus is ensuring that Ms. Hofherr is ready to take over as Head of School. She's already very capable, but after eight years in this role, I hope to offer her useful advice and insights. I also want to enjoy this final year—spending time with students, appreciating what I love about the school, and saying a proper goodbye.

05.

**WHAT ARE YOU LOOKING FOR IN YOUR NEXT ROLE?**

I want to go somewhere I can make the same kind of impact I made here. When I first came to Kingsley, there were big challenges—like the fact that we didn’t own our building. We had less than ten years left on our lease, and if the owners had decided to sell, we could have lost our space. Helping Kingsley buy the building was deeply meaningful. Now, I’m exploring new opportunities to make an impact. I’m back in school, training to become a performance coach to help other school leaders and teachers grow in their work. That could allow me to positively influence many schools, even beyond Kingsley.



06.

**WHAT IS YOUR OPINION OF THE 6-7 MEME?**

I’ve tried to understand “6-7,” but honestly, it makes no sense to me!

07.

**WHAT ABOUT K-POP DEMON HUNTERS?**

I’ve only watched about ten minutes of it, and I don’t quite understand it yet. Maybe I’ll start with the soundtrack, then watch the movie and decide.

08.

**WHAT DID YOU ENJOY MOST ABOUT WORKING AT KINGSLEY?**

There’s so much I’ve enjoyed. I love how excited students are to come to school every day. Kingsley students are some of the most enthusiastic I’ve ever met. Even on tough days, you show up ready to learn and connect. I’ve also had the privilege of working with amazing educators and administrators. What’s special about Kingsley is that everyone—from teachers to financial officers—interacts with students in some way. At many schools, people in those roles never see students, but here, everyone’s part of the community. Personally, becoming Head of School was a lifelong goal that took 25 years to achieve, and it’s been incredibly rewarding to hold that position for eight years.



# BRINGING OUR STRATEGIC PLAN TO LIFE



Two years into Kingsley’s five-year Strategic Plan, the work of translating vision into action is evident across the school—from classrooms and faculty culture to community engagement. Guided by four strategic objectives, each supported by focused, timebound goals, the plan continues to serve as a north star, aligning daily work with long-term priorities.

### FROM INSIGHT TO ACTION: HOW WE GOT GOING

Following the January 2024 release of the Strategic Plan, Associate Head of School Tara Hofherr and consultant Leah Goldman P’28, founder of Intuition Strategy®, partnered to guide the senior administrative team in turning the Plan into measurable progress. Goldman trained school leaders in the Objectives and Key Results (OKR) framework, ensuring strategic priorities were translated into concrete, cross-functional milestones.

The team concurrently revisited the school’s mission, vision, values, and existing initiatives—including the Portrait of a Graduate (see page 12)—to ensure that the Strategic Plan rollout would connect to a larger, shared picture of student experience and institutional growth. By aligning initiatives, defining clear goals, and sustaining a cadence of action, Kingsley has moved from aspirations to tangible results—building momentum that will carry the school through the remaining years of the Strategic Plan and beyond.

## STRATEGIC PLAN PRIORITIES

PROGRAM	PLACE	PEOPLE	PERMANENCE
The Kingsley Education	A Vibrant School Community of Choice in the City	The Heart of the School: Recruit and Retain Extraordinary Faculty and Staff	Positioned for the Future



### About Leah Goldman

A Kingsley parent and trusted thought partner, Leah Goldman is the creator of Intuition Strategy® and Corporate Tarot Cards®, tools she designed to help leaders make fast, values-aligned decisions in complex environments. With over 20 years of experience advising executives in tech, communications, education, and consumer products, she blends proven strategy tools with what she calls “Invisible Data”—intuition, timing, and human dynamics that drive every outcome.

## KEY STRATEGIC PLAN OBJECTIVES: HIGHLIGHTING SUCCESS AND FORWARD-MOMENTUM

The following highlights capture a small slice of the ways Kingsley is living out its Strategic Plan. Many are works-in-progress, with more impact to come. Read on and stay tuned for further updates.

### Objective 1: Center the Montessori Throughlines That Differentiate Our Academic Programs

Kingsley teachers are deepening their practice as high-quality educators to ensure students meet clear developmental and academic benchmarks. Recent work has focused on defining what Montessori education looks like in every grade—blending inquiry, independence, and intellectual rigor. Literacy benchmarks have been mapped across divisions. Faculty are intentionally delivering them within Kingsley’s curriculum frameworks using Montessori materials and supplemental literacy materials, like the Wilson Foundations program. In both Early Childhood and Elementary, teachers have refined our “throughlines”—the habits of mind that connect the Kingsley experience from Toddler to Sixth Grade. Auxiliary Programs now incorporate Montessori principles, underscoring that every adult on campus contributes to the student experience. One initiative that set the stage for the Strategic Plan was the enhancement of Kingsley’s math program—an effort launched early with the upcoming plan firmly in mind. *See pages 14–15 for the latest on this exciting endeavor.*

### Objective 2: Harness the Power of People and Place

At Kingsley, learning has always extended beyond the classroom. Now, we are increasingly leveraging our dynamic city and diverse community, making the school a vibrant hub for exploration, discovery, and personal growth. This builds students’ knowledge, empathy, and confidence, and prepares them to navigate complex ideas and environments. Through Kingsley’s “expanded campus,” students gain hands-on experiences that bring Montessori principles and academic rigor to life. A few highlights:

- Family-led lessons enhance Early Childhood students’ exposure to new languages and cultures, from making skull masks and ofrendas for Día de los Muertos and painting rangoli-style designs for Diwali to food tastings at Passover and read-alouds during Eid.
- Through Zoo New England’s HATCH conservation program, our budding zoologists in Lower Elementary participate in a “real-world rare species conservation program by raising hatchling turtles to greatly increase their chances of survival in the wild” (Zoo New England). Together, they learn about wildlife conservation, wetland ecology, and landscape history.
- Upper Elementary students work with experts to explore primary sources at the Boston Public Library Leventhal Map & Education Center. Per Claire Harris, Director of Elementary Education, “experiences like these expand research skills while deepening students’ connection to the subject and to the world around them.”



## STRATEGY IN MOTION

# BRINGING OUR STRATEGIC PLAN TO LIFE

### Objective 3: Enrich the Faculty and Staff Experience

At Kingsley, students thrive when educators feel supported. A School leadership working group outlined a new, multi-pronged approach to recognition based on feedback from faculty and staff. A refreshed and fully transparent compensation plan aligns salaries with mission and market realities, while years-of-service awards celebrate our employees' dedication to Kingsley. The results speak for themselves. Faculty report a stronger sense of belonging and shared purpose, and retention reached a record high this year. Indeed, we met a central aim of our work this year—retaining teachers by offering clear pathways for growth at Kingsley, including Assistant Teachers becoming Lead Teachers and veteran teachers stepping up to oversee new initiatives like the KEP 1 classroom. *See next page* to cheer for our first year-of-service award recipients.

### Objective 4: Secure Our Financial Stability in Order to Engage the Mind, Hands, and Heart of Students of Today and Tomorrow

Kingsley's continued financial strength ensures that our mission can thrive for generations to come. In the past 18 months, this work has included thoughtful enrollment planning and the ongoing growth of the Annual Fund, both of which directly support program excellence and accessibility.

A defining milestone in this objective was securing Kingsley's permanent home in the Back Bay through the purchase of the Exeter building—a transformational step that anchors the school's future in the heart of Boston. This investment not only provides long-term financial stability, but also allows Kingsley to imagine new possibilities for learning, community, and growth within a space that is truly its own.



## PORTRAIT OF A GRADUATE

### CONFIDENT LEARNERS

Kingsley graduates are independent, self-aware, lifelong, CONFIDENT LEARNERS.

- We self-advocate.
- We are empowered to take risks.
- We pursue opportunities to expand our learning.

### RESILIENT EXPLORERS

Kingsley graduates are RESILIENT EXPLORERS, relentless in our pursuit of growth.

- We embrace new experiences.
- We approach challenges with a growth mindset.
- We understand that failure is often part of the path toward success.

### EMPATHETIC CITIZENS

Kingsley graduates are globally-minded, EMPATHETIC CITIZENS who lead with kindness.

- We know what it means to belong to a community and to think of others in addition to ourselves.
- We seek and respect the viewpoints of others in order to better understand everyone's experiences.
- We are committed to making our world a more just place for all.

## KINGSLEY FACULTY & STAFF

# CELEBRATING YEARS OF SERVICE

### 26 YEARS



Josh Squire

At Kingsley, we deeply value the dedication and contributions of our employees. Their commitment makes our community strong, and it is a privilege to recognize key milestones throughout their impactful careers.

We are delighted to introduce our updated Years of Service Recognition Program. We now mark five-year anniversaries with a personalized gift from a curated menu, while colleagues with ten or more years of service receive gifts and are recognized with annual longevity bonuses.

This program is one of the many ways we aim to honor the dedication, loyalty, and passion Kingsley colleagues bring to their work each day.

Please join us in congratulating our first round of honorees—Josh, Tara, Erin, Claire, and Ashley. Thank you for all you do to make Kingsley a wonderful place to work, learn, and grow.

### 10 YEARS



Tara Hofherr



Erin Morse



Our teachers are experts in how children learn and grow, guiding each step with thought and intention. As students progress through our intentionally designed ten-year program, so does our approach—shifting to meet their changing needs and offering the perfect balance of encouragement and challenge at every step. I'm deeply proud of the improvements we've made to support and retain our excellent Kingsley teachers.

Steve Farley, Head of School

### 5 YEARS



Claire Harris



Ashley Malloy

# COLLABORATION BLOSSOMS

## YEAR FOUR OF MATHEMATICS UPGRADE



Thanks to ongoing philanthropic support, Kingsley’s four-year mathematics renovation is going strong, helping students and teachers become ever more confident, collaborative,

and deeply engaged in mathematical thought and application.

Beginning in 2022, Kingsley undertook a comprehensive review and redesign of our math program. After thoughtful data review, classroom observation, and teacher interviews, Kingsley selected Illustrative Mathematics (IM) as the curriculum of choice. Kingsley’s schoolwide Math Charter was established and learning benchmarks were updated for Kindergarten through Grade 6.

In 2023, IM was implemented with great success for students in Grades 3–6. The curriculum is rigorous and inquiry-based—designed to promote deep conceptual understanding, problem-solving skills, and mathematical reasoning. In alignment with Kingsley’s

educational philosophy, students drive their own learning and forge multiple pathways to mastery. This fall marks the third year of IM instruction in these grades—a full three-year cycle for our graduating Sixth Grade students and three years of opportunities for faculty to enhance their instructional practice.

All students receive math lessons in grade level groups, which ensures that no student at Kingsley skips over a foundational skill. This is best practice in math education, says Ms. Hoekzema, Kingsley’s in-house Math Learning Specialist. However, Kingsley’s commitment to meeting each child at their individual level and providing runways for them to reach their full potential means that customization is essential.

While all students receive the same skill instruction, teachers customize individual follow-up work according to their students’ progress. There are opportunities for project-based learning and more advanced applications of what students know. If a content area is mastered, teachers will guide students to deepen their 21st-century cross-discipline skills, like reasoning, critiquing, and modeling learning with technology.



Using Illustrative Math in Third Grade has transformed how my students think about math. They don’t just memorize steps, but rather, they explore, reason, and explain their thinking with confidence. Sharing student strategies across classrooms has deepened our understanding of how children reason and think about math. It’s incredible to see how new ideas inspire us as teachers and strengthen our collective approach to helping every child make sense of math.



Caelainn Costello,  
Lower Elementary Teacher





All students benefit when math is represented in multiple ways, as it deepens understanding and helps connect new skills to prior knowledge. This approach builds a strong foundation, ensuring students are better prepared to grasp complex concepts and reducing struggles rooted in earlier misunderstandings.



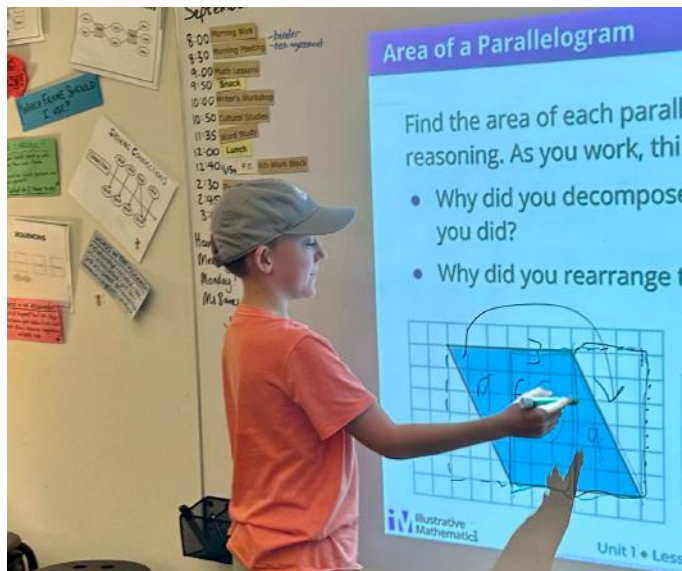
Bethany Hoekzema,  
Math Learning Specialist

For Grades 1–2, Kingsley’s new curriculum integrates Montessori math, elements of IM, and other best practices in education, ensuring a seamless and developmentally appropriate experience across the Elementary years. Over the past two summers, Kingsley faculty and instructional coaches collaborated to design this custom curriculum, including Kingsley-specific Math Albums and tactile activities for major IM benchmarks. The aim is to build out a deep catalog of lesson extensions, particularly for students who thrive with hands-on learning.

Some mathematical concepts, like fractions, have a robust list of hands-on Montessori works that complement learning. Other key concepts do not, and our Kingsley teachers are innovating new methods and materials to fill that need. Special thanks to Ms. Costello, Mrs. Walton, and Mr. Hatcher for guiding this important work.

The goal of Kingsley’s mathematics renovation is not only to improve student learning outcomes; it is to support the development of Kingsley teachers into highly effective math educators. In pursuit of this, Lower Elementary teachers have worked with

consultant Shelby Strong in coaching cycles. These dedicated times for co-planning and co-teaching allow teams to practice and assess a variety of teaching strategies and material uses.



In a recent faculty meeting, those collaborative skills were on full display. Teachers discussed a range of topics, including optimizing 1:1 and whole-group content reviews, adapting word problems for different literacy levels, and boosting independence in the classroom. Ms. Costello explained how she schedules direct instruction to keep students highly engaged. Across the room, Mrs. Walton shared a custom material that’s been effective in her classroom. In the final year of the mathematics renovation, Kingsley teachers are at the helm—confidently charting an innovative, collaborative, and effective path forward for generations of students to come.

The new Kingsley Math Program ignites our students’ inherent love of learning and builds essential, lifelong reasoning and problem-solving skills. Generous support from Chris Olsen and Rob Small made this project possible, and we are truly grateful. Thank you.



Expanding the curriculum into First and Second Grade was a significant and thoughtful undertaking, requiring teachers to collaborate closely to align IM with the Montessori approach. The result is a rich, dynamic math environment where students are actively engaged, teachers are inspired, and mathematical thinking truly comes to life across the classroom.



William Hatcher,  
Lower Elementary Teacher

## LOOKING BACK

# 2024-25 ADVANCEMENT FESTIVITIES

### ANNUAL FUND KICKOFF

The Kingsley Community kicked off the 2024-25 Annual Fund in style on the Sixth Floor! It was a fantastic evening filled with warmth, connection, and shared purpose. Guests heard inspiring remarks from Beth and John Breslin P'26 '30 (and a surprise visit from the Kingsley Lion!), who reminded us why supporting Kingsley matters so deeply. Thank you to everyone who joined us to launch this exciting season of giving and community.



### DONOR DRINKS

Annual Fund donors capped the fall campaign at our third annual Donor Drinks. Thanks to Megan Donovan Chien and Kenneth Chien P'28 '32; Lara Sinicropi-Yao and Jake Sattelmair P'28 '31; and Sara Schlegel and Roy Schoenberg P'33 '35, for hosting three simultaneous house parties. Each unique celebration raised a toast to our community's generosity and our mutual commitment to a Kingsley education.



### SHINDIG 2.0

Kingsley grown-ups returned to the Cambridge Multicultural Arts Center for another unforgettable Shindig. Parents, teachers, grandparents, and friends came together to connect, laugh, and dance away the winter chill. Guests enjoyed live music from The Muse Band—plus a special performance of the Kingsley school song by Lucy Jacobs '24 and Maya Carlson '24, who co-wrote the piece with Diana Galanakis.

## GIVING DAY: A RECORD-SETTING RACE TO THE FINISH

Giving Day 2025 was one for the history books. In one spirited day, our community raised \$344,716 from 262 gifts—more dollars, more donors, and more participation from alumni and grandparents than ever before. Families took part in lively challenges, and students decorated tiny wooden cars in true Montessori style. Thank you, Lions, for racing to the finish and helping Kingsley achieve its strongest Annual Fund ever.



# KINGSLEY GIVING DAY

*Race to the Finish!*



## LEADERSHIP CIRCLES RECEPTION

We're deeply grateful to our Leadership Circle donors for their extraordinary generosity. Laura and Tait Nielsen P'28 '32 graciously hosted this year's celebration in their South End home, a joyful evening honoring those whose leadership gifts make such a powerful impact. The night was the perfect way to end a successful campaign and celebrate the spirit of community that defines Kingsley.



# LOOKING BACK FOCUS ON GRANDFRIENDS

## GRANDFRIENDS DAY

During their annual visit, grandparents and special friends helped our Kingsley Lions thrive. The pride on students' faces was unmistakable as they demonstrated their learning. Thank you, Grandfriends, for encouraging our students, strengthening our community, and building connections across generations.



## GRANDFRIENDS DAY DONOR LUNCHEON

The celebration continued with a special luncheon honoring grandfriends who contributed to the Annual Fund. Joined by their Kingsley students, guests enjoyed sandwiches, music, conversation cards, and coloring. We're so grateful for the generosity and enthusiasm of our grandfriend donors!



It is obvious that my Grandchildren are benefiting greatly from the excellent education they are receiving at Kingsley. I am so happy they are there!

Mary, Grandparent '26 '30

# LOOKING BACK LIONS IN SUMMER

## SUMMER PLAYGROUND PARTY

New and returning families gathered at Frieda Garcia Park for a sunny afternoon of summer fun and sweet treats. A huge thank you to Kristin Wallace P'22 '27 for organizing, and to Fatima Aziz P'26 '32 and Anjali Iyengar and Jonny Kasen P'29 '31 for helping make the day so wonderful!



## SUMMER CAPE PARTY

Summer wrapped up with a splash at the Porters' backyard celebration in late August. Tina, Ross, Caroline '28, Julia '31, and William '30 once again opened their Cape home for a day of poolside fun. A huge thank you to the Porters—what a perfect way to bid the summer farewell!



## SAVE THE DATES

**Giving Day**  
April 9, 2026

**With Gratitude:  
An Evening Honoring  
Steve Farley**  
April 23, 2026

**Grandfriends Day**  
May 8, 2026

**Leadership  
Circles Reception**  
May 19, 2026

**Volunteer Thank You**  
May 28, 2026

**Alumni Reunion**  
June 9, 2026

# GIFTS OF TIME

## Boards of Trustees Committees

### Board Executive Committee

Nik Shah, *Chair*  
Lara Sinicropi-Yao, *Vice Chair*  
Jonathan Kasen, *Treasurer*  
Morad Elhafed, *Vice Treasurer*  
Dane Rasmussen, *Clerk*

### Board Members

Robert Albro  
Vivian Arias  
Fatima Aziz  
Nicholas Azrack  
Danielle Frissell  
Ingrid Hammond  
William Krause  
Laura Nielsen  
Joshua Rottner  
Robert Small  
Kristin Wallace

### Audit Committee

William Krause, *Chair*

### Committee on Trustees

Vivian Arias - Chair  
Steve Farley, Head of School  
Dane Rasmussen  
Joshua Rottner  
Jonathan Kasen

### Development

#### Development Co-Chairs

Laura Nielsen  
Kristin Wallace

#### Annual Fund Co-Chairs

Beth & John Breslin  
Amy & Andrew Szczurowski

### Alumni Family Annual Fund Representatives

Cynthia & Michael Evanisko  
Adam Vartikar

### Grandparent Representatives

Bridget & Dan Frissell  
Fran & Dennis Slutsky

### Development Committee Members

Fatima Aziz  
John Breslin  
Beth Breslin  
Amy Brisson Haley  
Marivia Crespo  
Vicki Delmonico  
Carrie DeWitt  
Stacylyn Doore  
Megan Donovan-Chien  
Julie Fentin  
Danielle Frissell  
Laurence Groot Bruinderink  
Maggie Guinivan  
Jacklyn Hall  
Kathryn Kargman Holden  
Allison Huang  
Anjali Iyengar  
Jonathan Kasen  
Yaoyao Kelly  
Jennifer Khoury  
William Krause  
Daniel Lichi  
Karen Manning  
Caitlin McGovern  
Laura Nielsen  
Joe Pagliuca  
Angela Patel  
Jonathan Pivor  
Lisa Pizzi  
Tina Porter  
Claudia Robaina Winston  
Lauren Rottner

Sara Schlegel  
Nik Shah  
Jessica Shah  
Amy Szczurowski  
Andrew Szczurowski  
Kate Stoddard  
Kaitlin Strode  
Harry Sun  
Aparna Tanna  
Mike Tonelli  
Kristin Wallace  
Genna Weinstein

### Faculty Advancement Advisors

Shawnta Carson  
Sarah Crowley  
Rallee Holt  
Ashley Malloy  
Hadley Catalano Manning  
Laura Mendelson  
Erin Morse  
Josh Squire  
Haley Steffens  
Robbie Walton

### Events Committee

#### 85th Anniversary Co-Chairs

Fatima Aziz  
Kristin Wallace

#### Block Party Chairs

Nicole Barsalona  
Jessica Shah  
Kaitlin Strode

#### Shindig Chair

Elizabeth Scholder



Participating in the Annual Fund, especially as it is linked with Financial Aid, is one of the most important annual opportunities to go above and beyond for the community that is shaping our children.

William Krause, P'25 '28 '31, Board of Trustees

### Events Committee Members

Vivian Arias  
Beth Breslin  
Shelley Brown  
Adelle Chang  
Carrie DeWitt  
Alaska Elia  
Bryan Flynn  
Joanna Humphrey Flynn  
Danielle Frissell  
Chris Grimley  
Anjali Iyengar  
Jen Khoury  
Catherine Krause  
Cristina Lopez  
Marlena Love  
Justin Manjourides  
Heidi Makrinioti  
Ami Maru  
Lisa Miao  
Ambika Patni  
Daisy Penney  
Lisa Pizzi  
Kathryn Boyles Rogers  
Elizabeth Scholder  
Kanhai Shah  
Alex Sherman  
Jamie Simchik  
Lara Sinicropi-Yao  
Kristen Standish

Amy Szczurowski  
Claudia Robaina Winston  
Rathin Yagnik

### Grandfriends Day Volunteers

Courtney Gedney  
Jessica Shah  
Kanhai Shah  
Justin Manjourides  
Cara Sipprelle  
Anjali Iyengar

### Summer Parties

Fatima Aziz  
Anjali Iyengar & Jonathan Kasen  
Tina & Ross Porter  
Kristin Wallace

### Diversity, Equity, Inclusion, and Belonging Committee

Lara Sinicropi-Yao, *Chair*  
Vivian Arias  
Kim Barrett  
Steve Farley  
Claire Harris  
Tara Hofherr  
Julie Perlow  
Dane Rasmussen  
Nik Shah

### Finance

Jonathan Kasen, *Chair*  
Francis Cash  
Morad Elhafed  
Steve Farley  
Tara Hofherr  
Nik Shah  
Robert Small

### Head of School Support

Nik Shah, *Chair*  
Vivian Arias  
William Krause  
Joshua Rottner  
Lara Sinicropi-Yao

### Real Estate Committee

Robert Albro, Co-Chair  
Nicholas Azrack, Co-Chair  
Francis Cash  
Steve Farley  
Dane Rasmussen  
Nik Shah

### Strategic Plan Rollout

Leah Goldman



# GIFTS OF TIME

## Community Committees

### Admissions Ambassadors

Rachel Cargo  
Sophia Chou  
Nicole Christopoulos  
Laurence Groot Bruinderink  
Anjali Iyengar  
Catherine Krause  
Karen Manning  
Anna Marchek  
Justine McDonald  
Lisa Miao  
Lilli Mulvaney  
Stoian Nedelchev

Tina Porter  
Emily Proud  
Namrita Rai  
Lauren Rottner  
Claudia Robaina Winston  
Jessica Shah  
Rebecca & Edward Shklovsky  
Cara Sipprelle  
Courtney Tomaselli  
Marcus Viscidi  
Kumika Watia  
Hannah Weisman

### Committee Chairs

Shelley Brown  
Meg Galat

### Admissions & Host Volunteers

Erin Azrak  
Fatima Aziz  
Nicole Barsalona  
Beth Breslin  
Chantelle Boudreaux  
DeRon Brown

## Parent Association Committees

### Co-Presidents

Geunwon Kim  
Catherine Krause

### Executive Secretary

Jessica Shah

### Executive Treasurer

Beth Breslin

### Capstone

Jessica Shah (Kindergarten)  
Danielle Frissell (Grade 3)  
Lisa Pizzi (Grade 6)

### Communications

Rupi Arora  
Debra Brodsky  
Leah Goldman  
Chris Grimley  
Jacklyn Hall  
Richard Herold  
Ashley Karger  
Geunwon Kim  
Marlena Love  
Lisa Miao  
Elizabeth Scholder  
Jamie Simchik

### Early Childhood Events

Nicole Barsalona  
Anna Marchek

### Kingsley Cares

Aaron Beeler  
Annie Fuller

### Lower Elementary

Justine Macdonald  
Maria Echandi Roman

### Multicultural

Lily Sodhi  
Claudia Robaina Winston

### Outdoor

Adam Hall  
Adam Slutsky  
Mike Tilford

### Teacher Appreciation

Shelley Brown  
Kristin Wallace

### Class Parent Coordinators

Betul Cam  
Marlena Love  
Ambika Patni

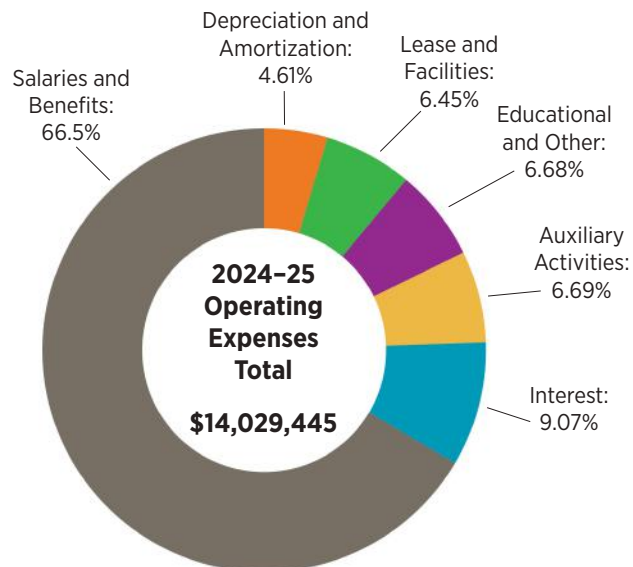
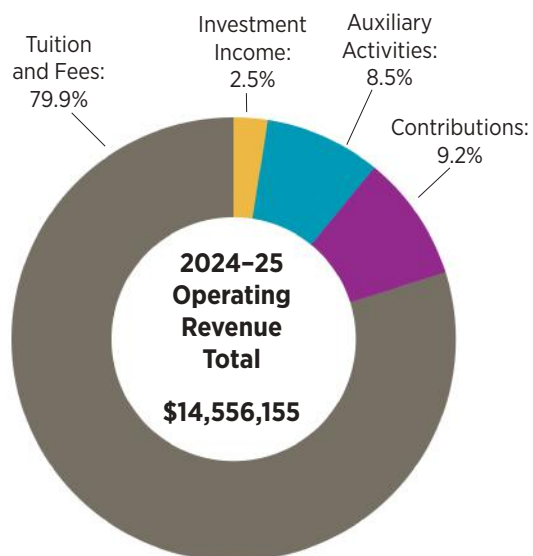
### Class Parents

Fatima Aziz  
Nicole Barsalona  
John Breslin  
Elizabeth Breen  
Amy Brisson Haley  
Jessica Shah  
Betul Cam  
Reed Catlin  
Nicole Christopoulos  
Carrie Dewitt  
Alaska Elia  
Zoë Friend  
Danielle Frissell  
Meg Galat  
Mariana Garay Petrone  
Leah Greco  
Melissa Greco  
Chris Grimley  
Sarah Halix  
Anjali Iyengar  
Erica Karlin  
Ashley Karger  
Yaoyao Kelly  
Jen Khoury

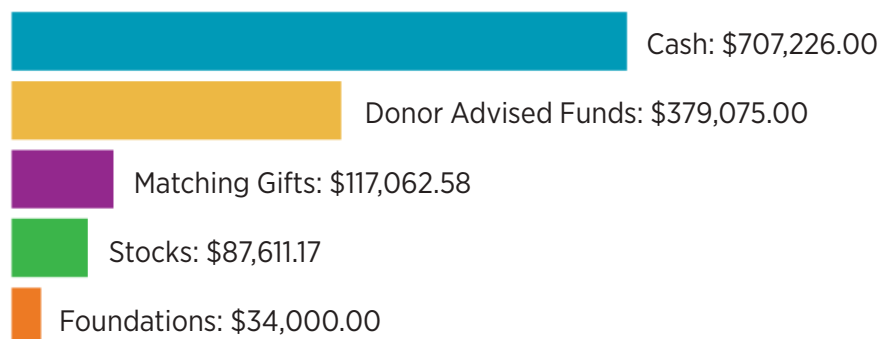
Alisha Lakhani  
Kristina Lindsey  
Anna Marchek  
Pat Marchek  
Justin Manjourides  
Karen Manning  
Caitlin McGovern  
Justine Macdonald  
Katie McDonald  
Lisa Miao  
Tara Murphy  
Chris Olsen  
Danni Pi  
Lisa Pizzi  
Carmine Petrone  
Emily Proud  
Lauren Rottner  
Dina Selkoe  
Elizabeth Scholder  
Cara Sipprelle  
Jamie Simchik  
Lara Sinicropi-Yao  
Kaitlin Strode  
Lisa Taffe  
Marcus Viscidi  
John Walsh  
Claudia Winston  
Supriya Yagnik  
Allison Huang

# FINANCIAL HIGHLIGHTS

## OPERATING REVENUE & EXPENSES



## GIFTS BY TYPE



Teaching is my passion and life's work... the impact that my students, their families, and my colleagues have on me is priceless. I feel so lucky to be a part of the Kingsley community!

Laura, Kingsley Teacher

# CUMULATIVE GIVING

## Gifts by Level

This list reflects all charitable contributions to Kingsley between July 1, 2024 and June 30, 2025. It includes gifts to the Annual Fund, Financial Aid, and designated programmatic support.

### Founder Circle (\$100,000.00+)

Christine Olsen and Robert Small

### Kingsley Circle (\$50,000-\$99,999)

Erin and Nicholas Azrack

### Head of School Circle (\$25,000-\$49,999)

The 72 Fund

Elizabeth and John Breslin

Lisa Miao and Rich Carona

Megan Donovan-Chien

and Kenneth Chien

Stacylyn and Michael Doore

Vivian Arias and Stephen Moeller

Laura and Tait Nielsen

Felicia and Joseph Pagliuca

Mariana and Carmine Petrone

Jessica and Nik Shah

Lisa and Patrick Taffe

### Lions Circle (\$10,000-\$24,999)

Anonymous

Lisle and Robert Albro

Mariko Gillan and Aaron Beeler

Elizabeth McGonigle-Breen

and Trevor Breen

Adelle Chang and Eddie Yoon

Ghita Akkar and Morad Elhafed

Alaska and Paul Elia

Xiao Wei and Eric Ko

Cynthia and Michael Evanisko

Jodi and Hal Hess

Kathryn Kargman Holden

and Richmond Holden

Ashley and Wesley Karger

Anjali Iyengar and Jonathan Kasen

Jill Ozzie and Patrick Kinsel

Susie and Patrick Korb

Tara Murphy and Luke LeSaffre

Marlena and Robert Love

Anna and Patrick Marchek

Ali and Phil O'Rourke

Molly and Brian Peterson

Caitlin McGovern and Conor Pigott

Tina and Ross Porter

Emily and Graham Proud

Kate and Charlie Reichenbach

Adriana Roca and Nicolas Rodriguez

Gretchen and Benjamin Roin

Andrea Miner and Jordan Romano

Lauren and Joshua Rottner

Lara Sinicropi-Yao and Jacob Sattelmair

Cristina Lopez and David Schor

Dina and Greg Selkoe

Danielle Frissell and Adam Slutsky

Lily Khasanova Sodhi and Karan Sodhi

Amy and Andrew Szczurowski

Nicole Barsalona and Michael Tonelli

The Rudolph J. Torello Foundation

Tania and Daniel Wallace

Kristin and Jon Wallace

Helen and Peter Wallace

Supriya and Rathin Yagnik

### Leadership Circle (\$5,000-\$9,999)

Marivi Crespo Moreira

and Alvaro Herreros Arregui

Hala AlEssa and Abdullateef AlBahar

Heidi Makrionoti and Thomas Antoniadis

Betul Cam and Adam Berrey

Rachel and Michael Cargo

Morgan and Andrew Elzinga

Tracy and Matthew Friedman

Melissa and Anthony Greco

Gabriela and Adam Goldstein

Carly Yue Wu and

Laurence Groot Bruinderink

Margaret and Kyle Guinivan

Amy Brisson Haley

and Christopher Haley

Gabriela Cesaro and Cèsar Hernandez

Charlotte and Kurt Hemr

Tara and Reid Jordan

Sarah and Thomas Lyons

Fabienne Courtois and Matthew Maddess

Karen and Kevin Manning

Katie and Jeff McDonald

Christina and Nick Manice

Cara Sippelle and Jake Merrill

Sarah Moser and Daniel Nash

Daisy Penney

Alexandra and Minesh Patel

Angela and Hem Patel

Emma Baumgartner and Brian Schwartz

Elizabeth Scholder

Matthew Scholder

Sara Schlegel and Roy Schoenberg

Sophia Chou and Foy Savas

Carrie DeWitt and Jamie Simchik

Kate and Jamie Stoddard

Kaitlin and Scott Strode

Fran and Dennis Slutsky

Aparna and Amar Tanna

Sarah Clinton and Michael Tilford

Daryn Lewis and Keith Tomlinson

Kumika and Buck Watia

Jiemin and Tielei Wang

Yaoyao Kelly and Oliver Snider

### Friends Circle (\$2,500-\$4,999)

Anonymous (4)

Shaea and Abdulla Alameri

Stephanie Sidelko and Eamon Cullinan

Nancy and Warren DeWitt

Joanna Humphrey Flynn

and Bryan Flynn

Courtney and Daniel Gedney

Meaghan and Benjamin Hildreth

Diane and Bob Hildreth

Melissa and Paul Karger

Catherine and William Krause

Alcira Rodriguez and Daniel Lichi

Christine and Spencer Morgan

Nicole Christopoulos and Edmund Rucci

Shelley Brown and Robert Savignol

Monisha Yerramalla and Monish Shah

Debra and Erich Shigley

Susan and Dwight Sippelle

Simone Gaines and Marcus Viscidi

### Community Circle (\$1-\$2,499)

Anonymous (36)

Liudmila Alekseeva

Beverly Armour

Meeta Gulyani and Rupri Arora

Cathy Auten

Elena Bafani

Sally Baines

Kim Barrett

Ann Bennett

Uma and Shreedhar Bindingnavle

Chris Blake

Julie Fentin and Chris Blanken

Denise and Dave Blanken

Mary Blome

Victoria and Joseph Bocchicchio

Celeste and Hassan

Bocchicchio-Chaudhri

Erin Zwaska and Sandy Boer

Susie and James Bonsey  
 Caren and Ed Breen  
 Joseph Brennan  
 Judith and Thomas Breslin  
 Penelope Breslin  
 Theodore Breslin  
 Kit Brisson  
 Marilyn and Robert Broege  
 Patti and Allen Brown  
 Sheila O'Keefe and Phillip Brown  
 Sorin Brusseau  
 Valerie Masin and Larry Buck  
 Dinah and Gordon Burgess  
 Allison and Douglas Campbell  
 Maria Carlman  
 Shephali Patel and Andy Carlson  
 Francis Cash  
 Margaret O'Donnell Catalano  
 and Stephen Catalano  
 Laura LaBonte and Reed Catlin  
 Alba and Dean Cestari  
 Yiyun Tsai and Raymond Chen  
 Griffen Chien  
 Xavier Chien  
 Angel Chou  
 Katia Christakis  
 Ellie and Brian Chu  
 Juliet Clark  
 Caroline Humphrey Clifford  
 and Christian Clifford  
 Penelope Clute  
 Caelainn Costello  
 Jessie Huoy and Chris Curtis  
 Nancy and Will Danford  
 Brandi and Dammy Daramola  
 Anne David  
 Samantha Dearborn  
 Victoria Delmonico  
 Erica Karlin and Garrett DeNinno  
 Charles Dewey  
 Cristina Polo Diaz-Bazan  
 and Salvador Diaz-Bazan

India Dilworth  
 Arthur Dixon  
 Caroline Doctor  
 Marisa Donlin  
 Mikki Donovan  
 Ellen Doonan  
 Glenn Doore  
 Teresa Chuang and Craig Emrick  
 Wendy Falchuk  
 Rohama Fanueal  
 Sam Farah  
 Sofia Farah  
 Steve Farley  
 Michelle Fawcett  
 Kelly Feeny  
 Beth and Richard Fentin  
 Jimena Zubieta Figueroa  
 Fran Finnigan  
 Amy Fitzpatrick  
 Elizabeth and Bill Flynn  
 Claire and Robert France  
 Emily and Walker Freeman  
 Margaret Shepherd and David Friend  
 Diana and Georgios Galanakis  
 Meg and Nicholas Galat  
 Kevin O'Reilly  
 Stephanie Marton and Collin Galster  
 Sharon Germana  
 Chantelle Boudreaux  
 and Jonathan Gips  
 Kseniia and Tekomah Goggins  
 Elise and Ira Goldman  
 Joyce Goldweitz  
 Sofia Greco  
 Kelly Smith and Chris Grimley  
 Abby Fierman and Mike Grossman  
 Nicole Gsell-Martin  
 Azar Halabi-Fisher  
 Brinkley Haley  
 Jacklyn and Adam Hall  
 Claire Harris  
 Cynthia and Jon Harris

Giuliana and Ben Hartwell  
 Cristina Zupcu and Timothy Harvey  
 William Hatcher  
 Katherine Hein  
 Rachel and Matthew Henry  
 Zoë Friend and Richard Herold  
 Grace Hoefs  
 Bethany Hoekzema  
 Tara Hofherr  
 Rallee Holt  
 Marge Houy  
 Emmy Graber and Peter Hruby  
 Allison and Bo Huang  
 Jessica and John Jacobs  
 Vilma and James De Vellis  
 Anne-Sophie and Jeremy Jawish  
 Lucy Jordan  
 Mark Jordan  
 Sasha Goldman and Steven Juckett  
 Jeongmin Yeon and Donguk Jung  
 Richard Junghans  
 Lucy Kapples  
 Lynn and William Kargman  
 Jeanne and Philip Karpel  
 Rona and Allen Kasen  
 Marni and Damon Katz  
 Cheryl Keefe  
 Emily Kelley  
 Ambika Patni and Scott Kennedy  
 Courtney and Ryan Kennedy  
 Pearl Kerber  
 Alex and Jennifer Khoury  
 Jazmyn Knight  
 Hui Weng and Yawei Kong  
 Adele Krause  
 Clarence Krause  
 Cynthia and William Krause  
 Emmy Lacroix  
 Jamie Lacroix  
 Matthew Lacroix  
 Brian Larivee  
 Emily Lashbrook



### DEWITT SIMCHIK FAMILY

Our family supports Kingsley's Annual Fund because we believe strongly in the school's ability to nurture curiosity and independence in our children. Contributing helps ensure that all Kingsley's students continue to thrive in a joyful environment. Kingsley builds confidence, empathy, and a lifelong love of learning that they will carry well beyond their years in Fairfield and Exeter.

Carrie, Jamie, Stella '31, and Adelaide '34

# CUMULATIVE GIVING

## Gifts by Level

### Community Circle (continued)

Silvana Lauricella  
Ellie Leahy  
Richard and Kimberlyn Leary  
Abigail Leck  
Christina and William Lehmann  
Helen and Paul Lehmann  
Dane Rasmussen and Mike Leslie  
Kristina and Jacob Lindsey  
Alexis MacArthur  
Jennifer Bencivenga  
and Craig MacDonald  
Jeremy Macdonald  
Justine Macdonald  
Amy and Michael MacDougall  
Suma Babu and Cari Mallanda  
Ashley Malloy  
Ada Manjourides  
Leah Goldman and Justin Manjourides  
Hadley Catalano Manning  
and Terry Manning  
Jim and Cynthia Marsh  
Marylou McCarthy  
Denise McKee  
Cindy Brown and Colin McKenna  
Colton McKenna  
Virginia Mead  
Namrita Rai and Aalek Mehta  
Laura Mendelson  
Winky and Dave Merrill  
Nicole Miller  
Eve Minsky  
Zinna Alekseeva and Jack Minsky  
Merton Minsky  
Nicole Minsky  
Sam Minsky  
Felix Moeller  
Nora Moeller  
Lillian and Patrick Mulvaney  
Lisa and Andrew Musto  
Warren and Mary Naphtal  
Anne-Marie Anagnostopoulos  
and Shaw Natan  
Hannah Weisman and Stoian Nedelchev  
CiCi and Glen Nielsen  
Danni Pi and Samuel Niles  
Phillip Norton  
Kristi and Brian O'Connor  
Donal O'Connor  
Mary O'Connor  
Shea O'Hill  
Mary O'Loughlin  
Katherine O'Mealey  
Elizabeth O'Regan  
Pamella Olson

Heena and Murat Onay  
Sarah Crowley and Sam Osancevic  
Nepheli Pantazis  
Theoni Pantazis  
Genna Weinstein and Jonathan Paul  
Ann Conway and Edward Pearson  
Julie Perlow  
Sadie Perrin  
Kate and Jonathan Pivor  
Lisa MacVarish Pizzi and Eric Pizzi  
Grayson Pizzi  
Scarlett Pizzi  
Diana Plascencia  
Kathleen and Whit Porter  
Helen Potter  
Lauren and Robert Powers  
Mary and Ronald Pressman  
Mariana and Ignacio Puente  
Brian Race  
Susan Raleigh  
Elizabeth Reilinger  
Geoffery Reilinger  
Bansi Shah and Charles Resor  
Louise Resor  
Cassidy and Jonathan Rhodes  
Maria Tandazo Rigazio  
Marcus Rishel  
Julia Rodgers  
Kathryn and Garrett Rogers  
Jenny and Ariel Rojas  
Carla Mallqui and Cesar Rojas  
Susan and Joel Rottner  
Deborah and Peter Rucci  
Erin Morse and Tommy Rzeznik  
Maria Paulina Echandi Roman  
and Alejandro Perez Sanchez  
Mackenzie Sattelmair  
Nina Saunders  
Noah Saunders  
Byron Savas  
Shelley Brown and Robert Savignol  
Miles Savignol-Brown  
Vivienne Savignol-Brown  
Anne Scholder  
Michelle Seccombe  
Beatrix Selkoe  
Polly and Dennis Selkoe  
Anya Shah  
Bennett Shah  
Harrison Shah  
Rishva Mehta and Kanhai Shah  
Kashvi Shah  
Aditi Manglik and Neil Shah  
Ami Maru and Shardule Shah  
Rashmi and Som Shah

Jennifer and Brenden Shea  
Joan Shea  
Daniel Sherman  
Eileen and Roy Sherman  
Linda and Klaus Shigley  
Rebecca and Edward Shklovsky  
Lucas Simpson  
Sharon Skilling  
Lindsay Barnas Snell and Peter Snell  
Gwenn and Mark Snider  
Hyo and Timothy Song  
Damini Bansal and Neil Sood  
Sara Martin and Marcus Springer  
Tiffany Skogstrom and Josh Squire  
Michele Stanley  
Haley Steffens  
Emily Naphtal and Julian Stern  
Matthew Suckow  
Tadpole South End  
Hamasat Gheddaf Dam  
and Priyank Taneja  
Courtney and Jerome Tomaselli  
Rosalie Tomaselli  
Bennett Trice  
Lynn and John Trice  
Deborah Tyrrell  
Adam Vartikar  
Karen Yee and Lewis Wadsworth  
Nicole and Bing Waldert  
Emma Wallace  
Isabella Wallace  
Jane Allard and John Walsh  
Robbie Walton  
Tiffany Cao and Bruce Wang  
Wayfair  
Pam Weatherbee  
Susan and Kyle Weaver  
Nicole Zatlyn and Jason Weiner  
Stacey Sherpe and Judd Weiskopf  
Sande and Robert Weiskopf  
Cessy Templeton and Bruce Wheeler  
Stephanie and Ben Wild  
Ashley Garove and Brian Williams  
Paige Wilson  
Deavan Winebrake  
Elizabeth Sheffer-Winig  
and Anthony Winig  
Susan and Jeffrey Winston  
Yung-Mae Yao  
Athena Yee-Wadsworth  
Sofia Yee-Wadsworth  
Aleena Zia

# CUMULATIVE GIVING

## Gifts by Constituency

### Parents

Anonymous (24)  
 Shaea and Abdulla Alameri  
 Hala AlEsa and Abdullateef AlBahar  
 Lisle and Robert Albro  
 Heidi Makrionoti and Thomas Antoniadis  
 Meeta Gulyani and Rupi Arora  
 Marivi Crespo Moreira and Alvaro Herreros Arregui  
 Erin and Nicholas Azrack  
 Elena Bafani  
 Mariko Gillan and Aaron Beeler  
 Betül Cam and Adam Berrey  
 Julie Fentin and Chris Blanken  
 Celeste and Hassan Bocchicchio-Chaudhri  
 Erin Zwaska and Sandy Boer  
 Elizabeth McGonigle-Breen and Trevor Breen  
 Elizabeth and John Breslin  
 Allison and Douglas Campbell  
 Rachel and Michael Cargo  
 Lisa Miao and Rich Carona  
 Laura LaBonte and Reed Catlin  
 Alba and Dean Cestari  
 Yiyun Tsai and Raymond Chen  
 Megan Donovan-Chien and Kenneth Chien  
 Caroline and Christian Clifford  
 Stephanie Sidelko and Eamon Cullinan  
 Jessie Huoy and Chris Curtis  
 Vilma and James De Vellis  
 Victoria Delmonico

Cristina Polo Diaz-Bazan and Salvador Diaz-Bazan  
 Stacylyn and Michael Doore  
 Ghita Akkar and Morad Elhafed  
 Alaska and Paul Elia  
 Morgan and Andrew Elzinga  
 Teresa Chuang and Craig Emrick  
 Joanna Humphrey Flynn and Bryan Flynn  
 Emily and Walker Freeman  
 Meg and Nicholas Galat  
 Stephanie Marton and Collin Galster  
 Courtney and Daniel Gedney  
 Chantelle Boudreaux and Jonathan Gips  
 Kseniia and Tekomah Goggins  
 Gabriela and Adam Goldstein  
 Melissa and Anthony Greco  
 Kelly Smith and Chris Grimley  
 Carly Yue Wu and Laurence Groot Bruinderink  
 Margaret and Kyle Guinivan  
 Amy Brisson Haley and Christopher Haley  
 Jacklyn and Adam Hall  
 Giuliana and Ben Hartwell  
 Cristina Zupcu and Timothy Harvey  
 Rachel and Matthew Henry  
 Zoë Friend and Richard Herold  
 Meaghan and Benjamin Hildreth  
 Kathryn Kargman Holden and Richmond Holden  
 Emmy Graber and Peter Hruby  
 Allison and Bo Huang

**100%** of Kingsley students benefit from philanthropic giving

**466** Total number of donors

**\$1,324,975** Total contributions to Kingsley

**\$4,263** Average gift amount

Alumni giving has more than tripled

Grandparent giving has doubled

Anne-Sophie and Jeremy Jawish  
 Sasha Goldman and Steven Juckett  
 Jeongmin Yeon and Donguk Jung  
 Richard Junghans  
 Melissa and Paul Karger  
 Ashley and Wesley Karger  
 Erica Karlin and Garrett DeNinno  
 Anjali Iyengar and Jonathan Kasen



# CUMULATIVE GIVING

## Gifts by Constituency

### Parents (continued)

Courtney and Ryan Kennedy  
 Ambika Patni and Scott Kennedy  
 Alex and Jennifer Khoury  
 Jill Ozzie and Patrick Kinsel  
 Xiao Wei and Eric Ko  
 Hui Weng and Yawei Kong  
 Susie and Patrick Korb  
 Catherine and William Krause  
 Jamie Lacroix  
 Matthew Lacroix  
 Brian Larivee  
 Christina and William Lehmann  
 Tara Murphy and Luke LeSaffre  
 Dane Rasmussen and Mike Leslie  
 Kristina and Jacob Lindsey  
 Marlena and Robert Love  
 Sarah and Thomas Lyons  
 Jennifer Bencivenga  
 and Craig MacDonald  
 Jeremy Macdonald  
 Justine Macdonald  
 Fabienne Courtois  
 and Matthew Maddess  
 Christina and Nick Manice  
 Leah Goldman and Justin Manjourides  
 Hadley Catalano Manning  
 and Terry Manning  
 Karen and Kevin Manning  
 Katie and Jeff McDonald  
 Namrita Rai and Aalek Mehta  
 Cara Sipprelle and Jake Merrill  
 Zinna Alekseeva and Jack Minsky  
 Vivian Arias and Stephen Moeller  
 Christine and Spencer Morgan  
 Lillian and Patrick Mulvaney  
 Lisa and Andrew Musto  
 Emily Naphtal and Julian Stern  
 Sarah Moser and Daniel Nash  
 Anne-Marie Anagnostopoulos  
 and Shaw Natan  
 Hannah Weisman and Stoian Nedelchev  
 Laura and Tait Nielsen  
 Danni Pi and Samuel Niles  
 Ali and Phil O'Rourke  
 Heena and Murat Onay  
 Sarah Crowley and Sam Osancevic  
 Felicia and Joseph Pagliuca  
 Angela and Hem Patel  
 Genna Weinstein and Jonathan Paul  
 Daisy Penney  
 Molly and Brian Peterson  
 Mariana and Carmine Petrone  
 Caitlin McGovern and Conor Pigott

Kate and Jonathan Pivor  
 Lisa MacVarish Pizzi and Eric Pizzi  
 Tina and Ross Porter  
 Lauren and Robert Powers  
 Emily and Graham Proud  
 Mariana and Ignacio Puente  
 Kate and Charlie Reichenbach  
 Geoffrey Reilinger  
 Banshi Shah and Charles Resor  
 Cassidy and Jonathan Rhodes  
 Breighl and Benjamin Robbins  
 Julia Rodgers  
 Adriana Roca and Nicolas Rodriguez  
 Kathryn and Garrett Rogers  
 Gretchen and Benjamin Roin  
 Carla Mallqui and Cesar Rojas  
 Andrea Miner and Jordan Romano  
 Lauren and Joshua Rottner  
 Nicole Christopoulos and Edmund Rucci  
 Erin Morse and Tommy Rzeznik  
 Maria Paulina Echandi Roman  
 and Alejandro Perez Sanchez  
 Lara Sinicropi-Yao and Jacob Sattelmair  
 Sophia Chou and Foy Savas  
 Shelley Brown and Robert Savignol  
 Sara Schlegel and Roy Schoenberg  
 Elizabeth Scholder  
 Matthew Scholder  
 Cristina Lopez and David Schor  
 Emma Baumgartner and Brian Schwartz  
 Dina and Greg Selkoe  
 Jessica and Nik Shah  
 Rishva Mehta and Kanhai Shah  
 Monisha Yerramalla and Monish Shah  
 Aditi Manglik and Neil Shah  
 Ami Maru and Shardule Shah  
 Jennifer and Brenden Shea  
 Debra and Erich Shigley  
 Rebecca and Edward Shklovsky  
 Carrie DeWitt and Jamie Simchik  
 Danielle Frissell and Adam Slutsky  
 Christine Olsen and Robert Small  
 Yaoyao Kelly and Oliver Snider  
 Lily Khasanova Sodhi and Karan Sodhi  
 Hyo and Timothy Song  
 Damini Bansal and Neil Sood  
 Sara Martin and Marcus Springer  
 Kate and Jamie Stoddard  
 Kaitlin and Scott Strode  
 Amy and Andrew Szczurowski  
 Lisa and Patrick Taffe  
 Hamasat Gheddaf Dam  
 and Priyank Taneja  
 Aparna and Amar Tanna

Sarah Clinton and Michael Tilford  
 Courtney and Jerome Tomaselli  
 Daryn Lewis and Keith Tomlinson  
 Nicole Barsalona and Michael Tonelli  
 Simone Gaines and Marcus Viscidi  
 Nicole and Bing Waldert  
 Tania and Daniel Wallace  
 Kristin and Jon Wallace  
 Jane Allard and John Walsh  
 Tiffany Cao and Bruce Wang  
 Jiemin and Tielei Wang  
 Kumika and Buck Watia  
 Stacey Sherpe and Judd Weiskopf  
 Stephanie and Ben Wild  
 Ashley Garove and Brian Williams  
 Supriya and Rathin Yagnik  
 Adelle Chang and Eddie Yoon  
 Fatima Aziz and Shahzad Zia

### Grandparents

Anonymous (3)  
 Liudmila Alekseeva  
 Beverly Armour  
 Cathy Auten  
 Ann Bennett  
 Uma and Shreedhar Bindingnavle  
 Denise and Dave Blanken  
 Mary Blome  
 Victoria and Joseph Bocchicchio  
 Caren and Ed Breen  
 Judith and Thomas Breslin  
 Marilyn and Robert Broege  
 Patti and Allen Brown

## PARTICIPATION

<b>Trustees &amp; Development Committee</b>	<b>100%</b>
<b>Families</b>	<b>94%</b>
<b>Faculty &amp; Staff</b>	<b>87%</b>

Dinah and Gordon Burgess  
 Margaret O'Donnell Catalano  
 and Stephen Catalano  
 Penelope Clute  
 Nancy and Will Danford  
 Charles Dewey  
 Nancy and Warren DeWitt  
 Arthur Dixon  
 Mikki Donovan  
 Glenn Doore  
 Beth and Richard Fentin  
 Fran Finnigan  
 Elizabeth and Bill Flynn  
 Claire and Robert France  
 Margaret Shepherd and David Friend  
 Elise and Ira Goldman  
 Azar Halabi-Fisher  
 Diane and Bob Hildreth  
 Marge Houy  
 Lynn and William Kargman  
 Rona and Allen Kasen  
 Cheryl Keefe  
 Cynthia and William Krause  
 Richard and Kimberlyn Leary  
 Helen and Paul Lehmann  
 Jim and Cynthia Marsh  
 Marylou McCarthy  
 Denise McKee  
 Winky and Dave Merrill  
 Warren and Mary Naphtal  
 CiCi and Glen Nielsen  
 Phillip Norton  
 Mary O'Loughlin  
 Pamela Olson  
 Mary and Ronald Pressman  
 Elizabeth Reilinger  
 Louise Resor  
 Susan and Joel Rottner  
 Deborah and Peter Rucci  
 Anne Scholder  
 Polly and Dennis Selkoe  
 Rashmi and Som Shah  
 Joan Shea  
 Linda and Klaus Shigley  
 Susan and Dwight Sippelle  
 Fran and Dennis Slutsky

Gwenn and Mark Snider  
 Lynn and John Trice  
 Helen and Peter Wallace  
 Pam Weatherbee  
 Sande and Robert Weiskopf  
 Elizabeth Sheffer-Winig  
 and Anthony Winig  
 Susan and Jeffrey Winston  
 Yung-Mae Yao

**Alumni Families**

Anonymous  
 Joseph Brennan  
 Sheila O'Keefe and Phillip Brown  
 Valerie Masin and Larry Buck  
 Shephali Patel and Andy Carlson  
 Ellie and Brian Chu  
 Marisa Donlin  
 Cynthia and Michael Evanisko  
 Amy Fitzpatrick  
 Tracy and Matthew Friedman  
 Sharon Germana  
 Abby Fierman and Mike Grossman  
 Katherine Hein  
 Charlotte and Kurt Hemr  
 Gabriela Cesaro and Cesar Hernandez  
 Jodi and Hal Hess  
 Rebecca and Evan Hornbuckle  
 Jessica and John Jacobs  
 Tara and Reid Jordan  
 Jeanne and Philip Karpel  
 Marni and Damon Katz  
 Amy and Michael MacDougall  
 Suma Babu and Cari Mallanda  
 Cindy Brown and Colin McKenna  
 Laura Mendelson  
 Linda and James Morse  
 Kristi and Brian O'Connor  
 Alexandra and Minesh Patel  
 Ann Conway and Edward Pearson  
 Kathleen and Whit Porter  
 Eileen and Roy Sherman  
 Lindsay Barnas Snell and Peter Snell  
 Tiffany Skogstrom and Josh Squire  
 Michele Stanley  
 Karen Yee and Lewis Wadsworth



**Highest Ever...**

- ⚡ Annual Fund contributions
- ⚡ Giving Day contributions
- ⚡ Number of Giving Day gifts

Susan and Kyle Weaver  
 Cessy Templeton and Bruce Wheeler  
 Nicole Zatlun and Jason Weiner

**Alumni**

Sorin Brusseau '24  
 Caroline Humphrey Clifford '99  
 Sofia Farah '18  
 Sam Farah '21  
 Jack Grossman '24  
 Lucy Jordan '20  
 Mark Jordan '22  
 Abigail Leck '23  
 Colton McKenna '22  
 Eve Minsky '22  
 Merton Minsky '24  
 Nicole Minsky '18  
 Sam Minsky '20  
 Donal O'Connor '22  
 Mary O'Connor '19  
 Libby Cobb O'Regan '89  
 Theoni Pantazis '25  
 Nepheli Pantazis '23  
 Noah Saunders '24  
 Nina Saunders '24  
 Beatrix Selkoe '23  
 Daniel Sherman '10  
 Adam Vartikar '02  
 Isabella Wallace '22  
 Sofia Yee-Wadsworth '14  
 Athena Yee-Wadsworth '19  
 Marcus Rishel '20  
 Aleena Zia '26



**GOLDSTEIN FAMILY**

We give to Kingsey because it's more than a school, it's a community that has nurtured our son's curiosity and confidence since his very first days as a P4.

Gaby, Adam, Teo '32, and Oscar

# CUMULATIVE GIVING

## Gifts by Constituency

### GIVING DAY STATS

 **\$344,716**  
Total raised

 **262**  
Total number of gifts

 **\$157,000**  
Amount unlocked in  
challenge funds

#### Students

Penelope Breslin '26  
Theodore Breslin '30  
Griffen Chien '28  
Xavier Chien '32  
Rohama Fanueal '29  
Sofia Greco '29  
Brinkley Haley '30  
Adele Krause '28  
Clarence Krause '25  
Witt Krause '31  
Emmy Lacroix '26  
Ada Manjourides '28  
Felix Moeller '29  
Nora Moeller '31  
Grayson Pizzi '25  
Scarlett Pizzi '25  
Mackenzie Sattelmair '31  
Byron Savas '31  
Miles Savignol-Brown '28  
Vivienne Savignol-Brown '30  
Anya Shah '29  
Bennett Shah '28  
Harrison Shah '31

Kashvi Shah '30  
Rosalie Tomaselli '31  
Bennett Trice '26  
Emma Wallace '27

#### Faculty & Staff

Anonymous (6)  
Ema Almon  
Sally Baines  
Kim Barrett  
Chris Blake  
Kit Brisson  
Alexis Cabot  
Monse Carlman  
Francis Cash  
Reed Catlin  
Angel Chou  
Katia Christakis  
Juliet Clark  
Caelainn Costello  
Anne David  
Samantha Dearborn  
India Dilworth  
Caroline Doctor  
Ellen Doonan  
Steve Farley  
Michelle Fawcett  
Jimena Figueroa  
Emily Freeman  
Diana and Georgios Galanakis  
Lydia Gallagher  
Joyce Goldweitz  
Nicole Gsell-Martin  
Claire Harris  
William Hatcher  
Annie Hentschel  
Grace Hoefs  
Bethany Hoekzema  
Tara Hofherr  
Rallee Holt  
Lucy Kapples  
Emily Kelley

Pearl Kerber  
Jazmyn Knight  
Jamie Lacroix  
Emily Lashbrook  
Alexis MacArthur  
Ashley Malloy  
Hadley Catalano Manning  
Virginia Mead  
Nicole Miller  
Shea O'Hill  
Katherine O'Mealey  
Heena Onay  
Sarah Crowley  
Julie Perlow  
Sadie Perrin  
Diana Plascencia  
Helen Potter  
Brian Race  
Cassidy Rhodes  
Veronika Ricken  
Maria Tandazo Rigazio  
Erin Morse  
Michelle Seccombe  
Jennifer Shea  
Sharon Skilling  
Haley Steffens  
Matthew Suckow  
Courtney Tomaselli  
Deborah Tyrrell  
Robbie Walton  
Paige Wilson  
Deaven Winebrake

#### Friends

Anonymous (3)  
Susie and James Bonsey  
Kelly Feeney  
Cynthia and Jon Harris  
Silvana Lauricella  
Ellie Leahy  
Susan Raleigh  
Lucas Simpson



#### GRECO FAMILY

We proudly support Kingsley, a community where every child has the opportunity to learn, grow, and succeed.

Melissa, Anthony, Sofia '29, and Luca

### Tributes

Mary Blome  
*In Honor of Esmé Rzeznik '30*

Dinah and Gordon Burgess  
*In Honor of Harlowe Williams '33*

Laura LaBonte and Reed Catlin  
*In Memory of Katherine Catlin*

Penelope Clute  
*In Honor of Troup Dorin '29*

Kelly Feeney  
*In Honor of Courtney Tomaselli*

Cynthia and Jon Harris  
*In Honor of Claire Harris*

Diane and Bob Hildreth  
*In Honor of Tucker Hildreth '32*

Lynn and William Kargman  
*In Honor of Emily Holden '33*

Cynthia and William Krause  
*In Memory of Fred Krause*

Marylou McCarthy  
*In Honor of Jack Rottner '29,  
Sophie Rottner '27, and Rosie Rottner '33*

Gretchen and Benjamin Roin  
*In Memory of Grandma Mary*

Linda and Klaus Shigley  
*In Honor of Camden Shigley '26  
and Celia Shigley '23*

Matthew Suckow  
*In Honor of Ellen Doonan*

Courtney and Jerome Tomaselli  
*In Memory of Edith Kingsley*

Rosalie G. Tomaselli  
*In Honor of Newbury 3 Teachers: Kyle  
Miller, Heena Onay, and Deaven Winebrake*

Adam Vartikar '02  
*In Honor of Renee Farkas*

### Corporations & Foundations

Bing  
The Rudolph J. Torello Foundation  
The 72 Fund  
Tadpole South End  
Wayfair

### Matching Gift Companies

Analog Devices Foundation  
Bank of America  
Benevity Community Impact Fund  
Breckinridge Capital Advisors  
Cambridge Pediatric Dental Associates  
Evestnet  
Fidelity Investments  
Google  
Johnson & Johnson  
Kroll  
Merck & Co.  
MFS Investment Management  
Morgan Stanley  
Piper Sandler Companies  
Takeda Pharmaceuticals  
The Baupost Group  
The Charles Stark Draper Laboratory, Inc.  
The Delta Air Lines Foundation  
Thermo Fisher Scientific  
Vertex Pharmaceuticals  
Wellington Management Company

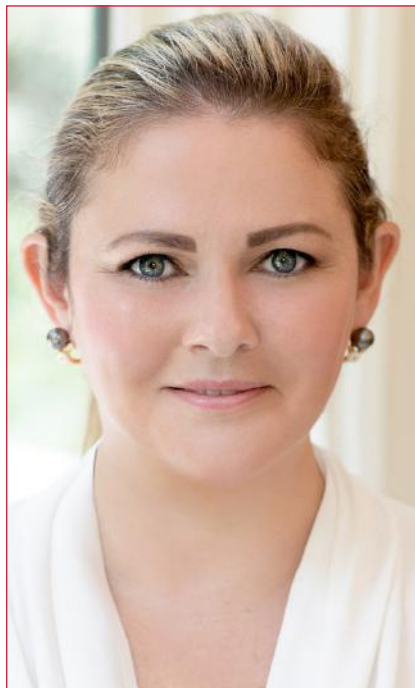


**Special thanks to the  
anonymous Kingsley  
families behind our  
Giving Day  
Challenge—your  
generosity set  
the course for an  
historic finish!**

## DEPARTING AND INCOMING BOARD OF TRUSTEES

### **INCOMING TRUSTEES: MEGAN DONOVAN-CHIEN, KATHRYN L. STODDARD, AND AMY SZCZUROWSKI**

We are pleased to welcome three new trustees to the Kingsley Board for 2025–2026. Each brings valuable experience in the professional and nonprofit realms, along with a deep commitment to our mission and the future of Kingsley. Thank you to these talented and dedicated individuals for stepping forward to help govern and steward Kingsley’s bright future.



#### **MEGAN DONOVAN-CHIEN**

Megan Donovan-Chien is Founder and President of The 72 Fund, which invests in programs that address critical unmet needs in mental health, women’s health, adolescent education, and humanitarian aid. She also serves on UNICEF’s International Council, the International Council Members Collective, the Mount Auburn Hospital Board of Advisors, and Kingsley’s Development Committee. Previously, she founded and led the DMM Global Foundation, a 501(c)(3) dedicated to education and research in molecular medicine, global cardiovascular health, and maternal health. Her international work has included HIV/AIDS prevention initiatives among the Maasai Mara of Kenya, charitable projects across Asia, Africa, and Europe, and teaching English in Xi’an, China. Megan holds a B.A. in International Relations and Art History from Fairfield University. Megan and her husband, Ken, are the parents of Griffen (Fourth Grade) and Xavier (Kindergarten).



#### **KATHRYN (KATE) L. STODDARD**

As a Managing Director in Wellington’s U.S. Financial Intermediaries Group, Kate oversees the provision of investment, operations, legal, and marketing services for the firm’s US subadvisory clients. In this capacity, she partners with clients on long-term investment strategy and policy issues, evaluating portfolio risks, performance and competitive positioning. Her work includes ongoing collaboration regarding investment- and business-related issues, as well as new product development. Prior to joining Wellington Management in 2013, Kate worked as a senior associate at the Ned Davis Research Group (2009–2013). Kate and her husband, Jamie, are the parents of Monte (Second Grade) and Tate (Toddler). She earned her M.B.A. from Babson College and a B.A. in economics, with a minor in Spanish, from Trinity College.



### AMY SZCZUROWSKI

Amy Szczurowski is the mother of Riley (Kindergarten) and Emerson (P4). Inspired by her mother’s example at the Agnes Irwin School in Bryn Mawr, Pennsylvania, Amy is committed to investing her time and energy in nurturing children’s education and advancing the values of community, collaboration, and partnership that sustain it. At Kingsley, she has served as a Class Parent, Auction Chair for the 2023 Financial Aid Bash, and with her husband, Andrew, Annual Fund Co-Chair for the past two school years (2023–2025). She also has contributed to the Hill House Event Committee for the Fall FUNdraiser and the Duxbury Bay Maritime School fundraisers. Before having children, Amy built a career in the creative field as a personal stylist and helped shape the early growth of Julia Rose Boston, a luxury fashion business. Amy earned her B.A. in English Literature from Trinity College.

### DEPARTING TRUSTEE: DANE RASMUSSEN

Dane’s thoughtful perspective and steady presence fostered collaboration and reinforced a culture of careful, mission-driven decision-making. His leadership has left a lasting imprint on the board’s work and helped lay the groundwork for Kingsley’s future success. Thank you, Dane!



### DANE RASMUSSEN

**3 years, Clerk and Member of Executive and Real Estate Committees**

As a Trustee from 2022 to 2025, and as Clerk of the Board during his final two years, Dane brought clarity, consistency, and care to the work of governance. His efforts strengthened the board’s ability to function effectively, supporting the work of the entire school community. In addition to his role on the Executive Committee, Dane served on the Real Estate Committee during the pivotal 2023–2024 year. While Kingsley was pursuing the purchase of 26 Exeter Street, he was a key contributor on both the Real Estate and Campaign Committees. He helped Kingsley navigate the highly nuanced and time-sensitive purchase, and worked to engage community investment in the project.



The role of the Kingsley Board of Trustees is threefold: hiring, evaluating, and overseeing the Head of School; ensuring fiduciary stability; and developing strategic goals for the ongoing fulfillment of the School’s mission.

# Graduation

## CLASS OF 2025

Congratulations to the Kingsley Class of 2025. We wish you all the best at your Next Schools and in your future endeavors. Once a Lion, always a Lion—so, stay in touch!

*Thank you to our graduation ceremony student musician: Ben Schlichtmann '26, violin.*



**Leony Albro**  
BB&N



**Lily Campbell**  
The Newman School



**Salvador Díaz Bazán**  
The Newman School



**Vivienne Khoury**  
Dana Hall School



**Clancy Krause**  
Boston Latin School



**Benjamin Merrill**  
Boston College High



**Hailey Motamed**  
Newton Country Day



**Theodore Natan**  
BB&N



**Grayson & Scarlett Pizzi**  
Dedham Country Day



**Lorenzo Rodriguez**  
Noble & Greenough



**Cesar Rojas**  
Xaverian Brothers High



**Max Springer**  
Boston College High



**Taylor Van Heidrich**  
Boston Latin School



**Leo Waldert**  
Catholic Memorial



**Owen Weisberg**  
The Newman School

**CLASS OF 2019**

**CONGRATULATIONS!**

In 2025, members of the Class of 2019 finished their high school journeys and headed to the following colleges:

Barnard College  
Bentley University  
Boston University  
Bucknell University  
Cornell University  
Dartmouth College

Georgetown University  
Harvard College  
Indiana University  
Northeastern University  
Pitzer College  
Providence College

Tufts University  
University of Richmond  
University of Vermont  
Yale University



# FAREWELL TO THE GRADUATES

An excerpt from the 2025 graduation speech by Cassidy Rhodes P'32 '33, Director of Administrative Operations



On one of my very first days at Kingsley, I got to observe an Upper Elementary poetry performance. A segment of the performance I vividly remember was the sharing of a Where I'm From poem. Adapted from the works of George Ella Lyon, the students articulated in such meaningful and thoughtful ways who they are and how they came to be.

Though I am no poet, I hope you will indulge me:

I am from echoes in the hall and laughter in the stairwell.

I am from “class class class” and “waterfall, waterfall,” and light filtering in through stained glass windows.

I am from the turtle, owl, and frog on the stairs, faithful greeters of decades of little Lions.

I am from sprinting down the Esplanade at age five, and from the 81 stairs to Upper Elementary. I am from peace above, below, before, and behind, from curiosity that grows into confidence.

I am from birthday walks around the sun, and from the kind of growth not marked with candles.

I am from the teachers who plant more than they'll ever see bloom, and from the quiet joy of watching it all take root.

I am from a front-row seat to becoming. From two to twelve, a whole life, ready to roar.

*Cassidy Rhodes P'32 '33 delivered this address during her tenure as our Director of Administrative Operations. She has since joined the team at International Justice Mission, where she works with the North America Regional Vice President.*



# ALUMNI SPEECH

An excerpt from the graduation speech given by Charlotte Waldert '19



When I was asked to speak today, the first thing I thought about was change. That's what everyone tells you graduation is about; something ending and something new beginning. But over the past few weeks, I've started thinking about a different part of change, one that we

don't often talk about. And that's what I want to focus on today: The in-between.

So, what is the in-between? I like to think of it as the space in-between two chapters of your life. For the graduates, that space is this summer. As you walk across the stage today, you might be looking forward to a summer trip or your first week at camp. But this summer is more than just that—it marks a transition. You've just completed something meaningful and something new is on the horizon. You're not quite where you were, and not quite where you're going. That's the in-between.

And here's a thing—this in-between space can feel a little confusing. You might feel excited and proud, but also a little unsure of what's coming. You might feel like everything is changing—because in some ways it is. But I've come to learn that the in-between isn't just something to rush through. It's actually a time full of opportunity.

The in-between gets you a chance to pause. To reflect on how far you've come and to prepare for where you're going. It's a time to ask yourself questions, to notice how much you've grown, and to celebrate the people and experiences that have helped shape you.

So while you may be looking ahead to your first day of middle school or your next camp adventure, I encourage you to take a breath and look back, too. Think about the friendships you've made, the

challenges you've overcome, the projects you've completed, and the way you've grown. Remember your MMUN speeches, your senior projects, big Mac wins, and a sense of community you've built here. You've already done so much and you've built such a strong foundation that will carry you forward.

Don't rush the in-between. It can be tempting to want to jump ahead and get to the part where there's less unknown and everything seems to make sense. But there's beauty in this moment of transition. Let yourself enjoy the slower pace of summer. Celebrate what you accomplished and make time for the people who matter to you. Be proud of what you've done and trust that you are more prepared than you know.

Kingsley has given you the tools. You know how to speak confidently, think creatively, and advocate for yourself. You know how to work hard and how to be a good friend. You know how to listen, how to collaborate, and how to lead with empathy. These are the skills that matter most—and you have them already.

To the entire class of 2025: congratulations. You've reached such an awesome milestone. Take your time in the in-between and soak it in. And when the next chapter begins, I know you'll be more than ready.

*Charlotte Waldert '19, is a 2025 graduate of the Noble and Greenough School and a first-year student at the University of Richmond, where she plans to study psychology and neuroscience. She is also the proud older sister of Leo Waldert '25.*

To read the full transcripts of both speeches, scan this QR code.



## Alumni Profile

# David Yellen '10

## CURIOSITY, CREATIVITY, IMPACT

David Yellen '10, has always been politically engaged. In Elementary school, he canvassed Boston's neighborhoods for Obama as his parents trailed behind. His Kingsley class was the first to attend Montessori Model United Nations. Fifteen years later, he is an annual speaker at the UN Climate Change Conference.



David speaks at the International Sustainability Resources & Technology Conference

After graduating from Kingsley, David attended Belmont Hill, where a school trip to Beijing revealed the extreme impacts of pollution and sparked his curiosity about how policy and infrastructure could protect the planet. That curiosity became the guiding thread of his career in climate policy. At Georgetown University, he majored in Government and explored energy policy through internships with Senator Elizabeth Warren and various think tanks. He worked at the Atlantic Council before joining the Clean Air Task Force (CATF) and returning to Georgetown for a master's in Environment and Sustainability Management in 2022. Now CATF's Director of Climate Policy Innovation, David leads international efforts to make clean energy technologies—from advanced geothermal to carbon capture—affordable and widely implemented.

As David reflects on his Kingsley experience, nurturing teachers and mentors are top of mind:

"We had a weekly assignment to write a chapter of a novel. Then, during the week, our teacher Ms. Adams would write the next chapter. It would alternate back and forth in a very fun way. I think that was where I really started to love [writing] as a creative outlet, in addition to a functional one.

The teachers treated me and my classmates with a lot of respect and as people with our own interests and thoughts. The mutual respect was really valuable and it encouraged those entrepreneurial interests."

At Kingsley, David felt empowered to follow his personal passions—something he links not only to his later academic success but to vital character traits like confidence, curiosity, and empathy. Reflecting on his experience, he explains:



David with Pete Zetlan, longtime Kingsley educator and administrator (2005)

“The thing about Kingsley that stuck with me was being encouraged to go where my interests took me. Rather than being forced into a box, I built skills around the things I was interested in that could be applied to other areas.

Framing your passions not as a distraction, but as central to doing good work is extremely valuable. [At Kingsley,] when I was learning skills, I was fully engaged because I was applying them to something I cared about. That allowed me to learn more effectively and durably than rote practice. Kingsley’s approach gives students confidence because it encourages individuality. It set me up to pursue my interests later in life and built an overall entrepreneurial spirit.”

David’s work depends on listening and appealing to a variety of audiences: governments, companies, and the public. On this front, his Kingsley years were highly instructional.

“At Kingsley, I was in a room with 15 other people who were also communicating about their interests. Being encouraged to care about other people’s passions at a young age was hugely valuable.

The most important skills of my job involve understanding other people—what they care about and what they’re looking for. That’s how you can be an effective advocate. And frankly, I would say it goes deeper. It’s how you can be effective as a colleague, and in your personal life.

When students or interns ask me for career advice, the number one thing I tell them is that your EQ matters more than anything else. You can be the most intelligent person on the planet, but if you can’t empathize and be somebody that people want to work with, it’s not going to get you very far.”

Some of David’s favorite Kingsley classes were arts co-curriculars. A Kingsley education develops the whole child—with creativity and academic skills tightly intertwined. David believes this integrated foundation made all the difference for him, and will remain a defining asset for future graduates.

“Everything done right is creative. Even with a highly technical economic analysis, you need a creative mind to figure out the best way to do it and to communicate it. I don’t draw a distinction between the creative and the technical sides. In a perfect world, in an effective world, they go together.

Individuality, curiosity, and thinking for yourself are so important. With the direction technology has gone, these traits are even more important to cultivate early and are less likely to happen naturally. They set young people up even better now than they did in the past, because they are much more rare.

It goes back to that Kingsley classroom experience—being next to people with different passions. It doesn’t mean you need to adopt their passions, but the ability to be curious about things that matter to other people is a sign of strong character and contributes to empathy. It all starts by encouraging curiosity and encouraging students to follow their interests.”



David presents his Kingsley Senior Project, a study on The History of Pirates

## Alumni Profile

# Louisa Hemr '17

## CONFIDENCE & ADVENTURE

We caught up with alumna Louisa Hemr '17, currently studying abroad in Munich at Ludwig-Maximilian University. No stranger to adventure, Louisa spent last summer on an immersive Russian program in Tbilisi, Georgia. Louisa is a junior at Bowdoin College, majoring in German & Russian, Eurasian, and Eastern European Studies with a



concentration in Language and Literature. At Kingsley, which she attended from Preschool through Sixth Grade, she was encouraged to boldly follow her passions.

Louisa in Munich (2025)

“I can directly trace my interest in Russian literature back to my time at Kingsley. In Sixth Grade, I got my hands on a copy of *War and Peace* and stubbornly began trying to read it. Some of my most formative days were those when my friends and I spent our free time curled up in the library, looking at everything from biographies of Coco Chanel to scientific non-fiction to Tolstoy. I appreciate how we were given freedom to explore each of our individual talents.”

After graduating from Kingsley, Louisa leapt headfirst into middle and high school at Boston Latin School—charting a course that her younger brother, Joseph '20, would eventually follow.

“Being the oldest sibling, I had no idea what to expect at a large, traditional school. I think that

the opportunities for academic exploration I had at Kingsley helped me to navigate life beyond its walls. I knew I would be able to handle whatever challenges I ran into.”

Louisa shared that she’s enjoying her time abroad tremendously, exploring Europe and taking exciting classes through LMU’s departments of Germanic and Slavic Philology. While she’s still considering her future career path, she is currently looking to pursue journalism or publishing, with a possible pivot to law or academia. Whatever her future brings, empathy and cooperation will be top of mind.

“Kingsley’s focus on fostering collaboration is one skill that I come back to time and time again. From opportunities to benefit from each other during group work, to being introduced to the art of respectful debate and persuasion in MMUN, I learned how to problem-solve and work effectively with others. I truly do not think I would be the same person I am today without my time at Kingsley.”

Armed with confidence, a collaborative spirit, and a deep love of learning, Louisa continues to embody the very best of Kingsley. We look forward to following her next adventures!



Louisa in her Kingsley classroom (2009)

## ALUMNI REUNION

# FRIENDS FOR LIFE

In May, Sixth Grade students and Kingsley alumni currently in middle and high school returned to campus for a fun and spirited Alumni Reunion. Over pizza, donuts, and seltzers, attendees reconnected with old friends and former teachers, filling the space with laughter and conversation. From making friendship bracelets and playing foosball to diving into board games and flipping through vintage Kingsley Red Books, there was something for everyone to enjoy. The evening wrapped up on a heartfelt note, with a stack of thoughtful, handwritten messages from alumni ready to be delivered to beloved classrooms and teachers across the school.



## ALUMNI PANEL

# THE KINGSLEY EFFECT

In November 2024, Kingsley students and families came together in the Exeter Community Space to hear a panel of recent alumni reflect on how their time at Kingsley shaped their lives. Graduates from the Classes of 2019–2024 shared memorable moments from the Upper Elementary years and spoke about how Kingsley prepared them to succeed academically, personally, and socially in their next schools and beyond. The event was especially valuable for Sixth Grade students, who gained helpful insights into the application process and the transition to middle school. Many thanks to our alumni panelists: Elizabeth Austin, Ryan Chang-Wu, Benjamin Goldberg, Jack Sweet, and Charlotte Waldert.



Kingsley does a really great job at teaching students how to manage their time properly and how to really be a leader in group settings. After all of my work at Kingsley with planners and organization, I'm now able to keep track of my assignments and make sure everything is done on time.

Bella '22, Alumni

# Looking Ahead

## 10 QUESTIONS FOR OUR INCOMING HEAD OF SCHOOL

### TARA HOFHERR

**What first drew you to Kingsley—and what has kept you here?**

I was drawn to Kingsley by the opportunity to really spark and inspire kids who are excited to learn. The day that I interviewed here, the Sixth Graders were rehearsing their senior project presentations in the community space. I thought, “What is happening here? This is unlike anything I’ve heard a child say or do.” I’m still inspired by Kingsley students. I still love coming to work every day. That’s why I’m still here.

**If you had to capture Kingsley in one image or phrase, what would it be?**

A Kindergartner and a P3 holding hands, walking up the stairs of Fairfield into school together.



**What have Kingsley students taught you over the years?**

Kingsley students have taught me about the impact of kindness. They have reinforced infinite hope during times when it would be easier to feel uncertain about the future. Kingsley kids give me confidence in what the future can be.

**After 11 years here, what lesson feels most valuable as you step into this new role?**

The power of listening.

**What brings you joy—inside or outside of school?**

Mr. C likes to come hang out in my office with students. That always brings me joy. There is never anything I am doing that I won’t stop to engage in whatever conversation the students are looking to have. Community Meeting also brings me a lot of joy. It is the time when it feels like we are most connected. It’s just so beautiful.

**What’s something—big or small—that’s inspiring you right now?**

Right now, I am inspired by all of the Diane Keaton stories and quotes, because she was a fearless, bold, authentic woman. I respect, look up to, and aspire to be that person, and to make that kind of impact on others.

**The best part of my day is...**

Sixth Grade math.

**Students would describe me as...**

Strict?

**My favorite Kingsley tradition is...**

I love the K Marathon.

**I knew I was meant to be an educator when...**

I have always wanted to be a teacher. Still do.



# Thank You, Kingsley Community

