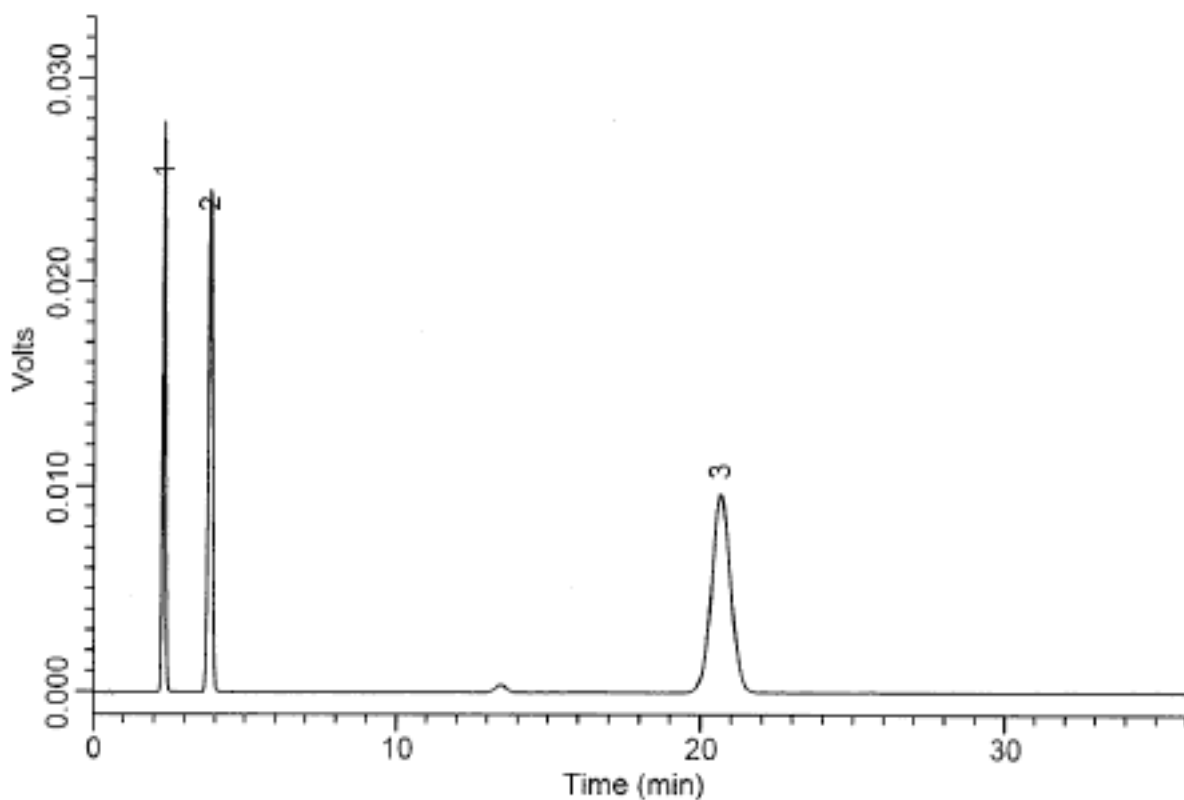


Analysis of Diclofenac sodium

Data No. LA172-0000



$R_s(1, 2) = 5.9$

Column : Inertsil ODS-3V
5 μ m
150 \times 4.6mm I.D.

Solutes : 1. Ethyl paraben(7.0 μ g/mL)
2. n-Propyl paraben(10.0 μ g/mL)
3. Diclofenac sodium(40.0 μ g/mL)

Column Cat. No. :

Eluent : CH₃OH/0.12% CH₃COOH=4/3

Flow rate : 2.5 mL/min.

Col. Temp. : 40°C

Detection : UV 240 nm

Injection Vol. : 20 μ L

Sample : 1. Ethyl paraben(7.0 μ g/mL)
2. n-Propyl paraben(10.0 μ g/mL)
3. Diclofenac sodium(40.0 μ g/mL)