



CENTRAL CUTS

Wagyu Beef Central Cut: A tender, richly marbled center cut offering a melt-in-your-mouth wagyu experience.



STEAK CUTS

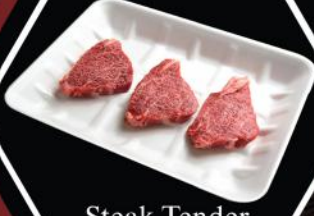
★ STEAK CUT THICKNESS - 3.5MM

500g/250g



Ribeye

500g/250g



Steak Tenderloin

500g/250g



Steak Ribeye

OTHER CUTS

750g/Package
(5pcs)



Burger Patty

500g



Cube Cut

500g/1kg



Beef Mince
Neck & Shank

YAKINIKU CUTS

★ YAKINIKU CUT THICKNESS - 5MM

500g



BBQ Chuck Roll

500g



BBQ Chuck Tender

300g



Kushiyaki

550g



Kushiyaki Cube

500g



BBQ Short Plate (Inside Part)

500g



BBQ Chuck Rib

500g



Top Sirloin Butt (Backside)

500g



Slice Chuck Roll

SHABU-SHABU CUTS

★ SHABU-SHABU CUT THICKNESS - 2MM

500g



Ribeye

500g



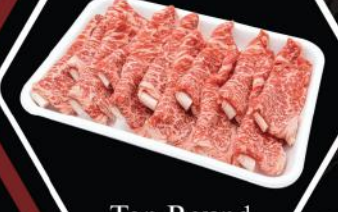
Knuckle

500g



Top Sirloin

500g



Top Round

500g



Chuck Roll

500g



Outside (Bottom Round)

500g



Clod