



# Wooster School

## PROFILE

### 2025-2026



#### WOOSTER SCHOOL

Wooster School is guided by our Purpose, Promise, and Beliefs, which represent the natural evolution of the school's mission since our founder, Reverend Aaron Coburn in 1926, charged us with preparing our students to be "gentle, generous, truthful, kind, and brave." These commitments remind us that as a school community we must learn from the past, embrace the present, and look to the future as we prepare our graduates for college and lives of purpose in a world of increasing complexity and change.

**OUR PURPOSE** | Our purpose is to prepare young people for fulfillment, happiness, and success in life through the rigorous and healthy development of intellect, conscience, body, and spirit.

**OUR PROMISE** | The Wooster School community fosters a culture rich in thinking, learning, relationships, and Self-Help. Our students develop the skills, dispositions, and knowledge necessary to confidently and resiliently engage the world as people of conscience, compassion, and action.



#### MAKING THINKING & LEARNING VISIBLE

The latest research on how the brain, behavior, and emotions influence learning and identity development forms the basis of the daily Wooster learning environment for both faculty and students. Through a culture of thinking and relationships, Wooster helps students thoughtfully shape skills, dispositions, and knowledge into a design for success and fulfillment in college and life.



#### SELF-HELP

Self-Help means that community members are empathetic and communicate clearly, while taking responsibility for themselves, their actions, and the physical environment. The community, in turn, supports all of its members with reason and compassion. Self-Help is not a program, it is a community ethos.



#### LEARNER BEHAVIORS

Students receive specific feedback from their teachers on the Learner Behaviors we most value at Wooster School — perseverance, reflection, agency, collaboration, and time-management. This emphasis on teaching transferable skills and cultivating core competencies across the curriculum is an essential part of our mission to prepare students for life beyond Wooster. In addition to regular feedback on these Learner Behaviors, students receive formal progress ratings in each of these areas as part of their trimester report cards.



#### LEADERSHIP & MANAGEMENT SKILLS

Wooster School's Leadership and Management Skills Program, assures that all seniors gain authentic leadership and management skills experience by taking charge of a specific area of responsibility in the school as a Prefect. This program provides all students with leadership and followership tools that will be of great use in school, and in life.



#### SENIOR INDEPENDENT STUDY (SIS)

SIS is Wooster's most extensive and intensive program in experiential learning. All seniors engage in an independent project in a field of particular interest off campus during the final six weeks of senior year, culminating in a day of presentations and reflection. This experience helps some students consider new directions for future study and helps others explore potential career paths or individual interests. SIS provides an opportunity for Wooster seniors to apply what they have learned about themselves and their interests in a new environment outside the classroom, as they continue to explore essential questions about success, purpose, and meaning in their lives.

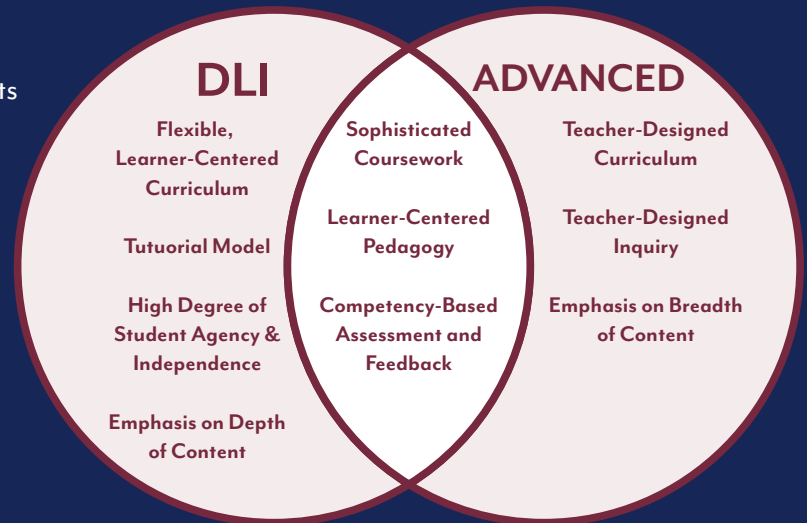
## DEEP LEARNING INITIATIVE AND ADVANCED COURSES

The most rigorous classes at Wooster School are the Deep Learning Initiative (DLI) and Advanced courses. The instructional frameworks for DLI and Advanced courses are distinct and purposefully designed to prepare students for differing types of collegiate experiences.

Akin to a college seminar, DLI courses are designed around tutorial experiences, during which students practice agency, independence, and curiosity in pursuit of developing the skills of inquiry, research and original thinking.

Modeled after college-level survey classes, Advanced courses emphasize breadth of content, inviting students to rigorously engage with challenging material in a more traditional learning environment. Assessments in these courses may include research papers or summative examinations.

**Wooster offers 11 DLI  
and 14 Advanced courses  
for 2025-26.**



### STUDENT GUIDANCE

The four-year Student Guidance Program focuses on developing students' essential life skills. It builds their social, emotional, and ethical literacy, enhances their capacity for self-reflection, and deepens their understanding of relationships and well-being. Students meet weekly in grade-level courses designed to help them navigate life pathway options and key transitions. The program places an emphasis on self-understanding and wellness, and what it means to be responsible members of a safe, healthy, and just learning and living environment at Wooster, in college, and beyond.

### STUDENT LEARNING SUPPORT PROGRAMS

**Bridge Program** | The Bridge Program provides comprehensive, integrated support services for high-achieving neurodivergent learners who are mainstreamed in all core classes as well as the arts, athletics, and service opportunities afforded to all other Wooster students. The program is designed to reduce support over time and promote individual agency and independence so that students are prepared for college and beyond.

**Pathways Program** | The Pathways Program is a one or two-year program that helps Wooster students develop the skills to be independent, lifelong learners. In a world of accelerating change, there is no more valuable skill than being an adaptive learner.



## TRANSCRIPT AND SCHOOL REPORT

### Graduation Credit Requirements:

English 12 • Math 9 • History 9 • Science 9  
World Language 9 • Arts, Digital Media and  
Technology 7 • Student Life 4 • Health 1

**Trimester System:** Terms end in November, March, and June. Senior year grade reports for the first trimester are automatically submitted to colleges; grade reports for the second trimester are submitted upon request.

**Rank:** Wooster does not rank.

**GPA:** Wooster uses a 6 point GPA scale. All courses are unweighted and GPAs are cumulative for 9th - 12th Grades.

**School Policy:** Students are required to self-report any incidents that result in separation from Wooster School.

## CLASS OF 2025 STANDARDIZED TESTS

SAT	Mid 50%	Mean
EBRW	530-630	580
Math	470-580	520
ACT	Mid 50%	Mean
Composite	22-26	24



## CLASS OF 2025 STUDENT VOICES



**SABIR '25**  
New York University

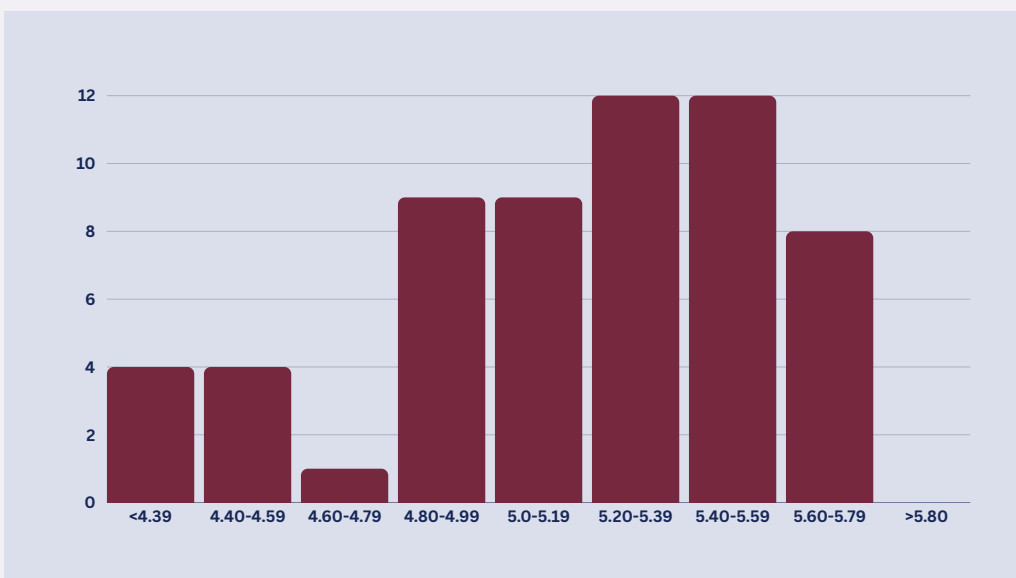
“Wooster introduced me to office hours at a very young age, allowing me to be confident with seeing my professors now in college. Wooster encouraged me to ask for help, and taught me how to ask for help.”



**CHARLOTTE '25**  
College of the Holy Cross

“Wooster’s learning environment gave me significant independence. Having the freedom to navigate my learning was an incredible foundation for my college career.”

## CLASS OF 2025 GPA DISTRIBUTION



## GPA CONVERSION CHART

6.0 Scale	4.0 Scale	6.0 Scale	4.0 Scale
6.00	4.00	3.90	2.86
5.90	4.00	3.80	2.72
5.80	4.00	3.70	2.58
5.70	3.95	3.60	2.44
5.60	3.90	3.50	2.30
5.50	3.85	3.40	2.24
5.40	3.80	3.30	2.18
5.30	3.75	3.20	2.12
5.20	3.70	3.10	2.06
5.10	3.65	3.00	2.00
5.00	3.60	2.90	1.86
4.90	3.54	2.80	1.72
4.80	3.48	2.70	1.58
4.70	3.42	2.60	1.44
4.60	3.36	2.50	1.30
4.50	3.30	2.40	1.24
4.40	3.24	2.30	1.18
4.30	3.18	2.20	1.12
4.20	3.12	2.10	1.06
4.10	3.06	2.00	1.00
4.00	3.00	<2.0	0.00



**Matt Byrnes**  
Head of School

**Diane Martin**  
Director of Divisions

**John Newman**  
Director  
of Student Guidance

**Erin Masotta**  
Registrar

**Judith Israel**  
Associate Director  
of Student Guidance

**Beth Jones**  
Associate Director  
of Student Guidance

## SCHOOL INFORMATION

- 72% of teaching faculty have advanced degrees
- Student-faculty ratio is 7 to 1; average class size is 12
- Accredited by the New England Association of Schools and Colleges  
Student Information

## STUDENT INFORMATION

- Class of 2026: 60 students
- 9 - 12 Enrollment: 253 students
- Students of Color: 21%
- Students: 6%
- Variable Tuition Program:  
\$3.4 million allocated to  
44 % of families

91 Miry Brook Road  
Danbury, CT 06810  
203.830.3900  
woosterschool.org  
CEEB: 070130

## COLLEGE MATRICULATION 2021-2025

Albertus Magnus College	Lynn University	Temple University
American University	Macalester College	Trinity College
Arizona State University	Manhattan University	Tufts University
Auburn University	Manhattanville University	Tulane University
Babson College	Marist University	Union College
Bard College	McGill University	United States Coast Guard Academy
Bates College	Miami University (Oxford)	University of Alabama
Baylor University	Middlebury College	University of Arizona
Bentley University	Montana State University	University of British Columbia
Binghamton University	Morehouse College	University of California (Davis)
Bishop's University	Mount Holyoke College	University of California (Irvine)
Boston College	Nazareth University	University of California (Santa Barbara)
Boston University	New York University	University of Colorado Boulder
Brandeis University	Northeastern University	University of Connecticut
Bucknell University	Northwestern University	University of Delaware
Case Western Reserve University	Ohio Wesleyan University	University of Denver
Clark University	Pace University (New York City)	University of Findlay
Clarkson University	Pace University (Westchester)	University of Florida
Colgate University	Parsons School of Design at The New School	University of Hartford
College of Charleston	Penn State University (Harrisburg)	University of Maryland (College Park)
College of Staten Island CUNY	Penn State University (University Park)	University of Massachusetts (Amherst)
College of the Holy Cross	Pennsylvania College of Technology	University of Massachusetts (Lowell)
Colorado College	Princeton University	University of Miami
Colorado School of Mines	Providence College	University of Minnesota (Twin Cities)
Connecticut College	Purdue University (Main Campus)	University of North Carolina at Chapel Hill
Curry College	Queen's University	University of Pittsburgh
Dean College	Quinnipiac University	University of Richmond
Denison University	Regis College	University of Rochester
Dickinson College	Rensselaer Polytechnic Institute	University of South Carolina
Eastern Connecticut State University	Rhode Island School of Design	University of St Andrews
Elon University	Roanoke College	University of Tampa
Embry-Riddle Aeronautical University	Rochester Institute of Technology	University of Toronto
Emerson College	Rollins College	University of Vermont
Emory University	Salve Regina University	University of Virginia
Endicott College	San Diego State University	University of Wisconsin (Madison)
Fairfield University	Santa Clara University	Ursinus College
Fordham University	Savannah College of Art and Design	Vanderbilt University
Furman University	School of the Art Institute of Chicago	Villanova University
George Washington University	School of Visual Arts	Virginia Polytechnic Institute and State University
Georgia Institute of Technology	Scripps College	Washington and Lee University
Gettysburg College	Seton Hall University	Washington College
Grinnell College	Skidmore College	Wesleyan University
Harvard University	Smith College	Western Connecticut State University
Haverford College	Southern Connecticut State University	Wheaton College
Hawai'i Pacific University	Southern Methodist University	William & Mary
High Point University	Spelman College	Worcester Polytechnic Institute
Hobart and William Smith Colleges	St. John's College (Annapolis)	Xavier University
Howard University	St. Lawrence University	
Iona University	Stonehill College	
Ithaca College	SUNY at New Paltz	
James Madison University	Syracuse University	
Kenyon College		
Lafayette College		
Lehigh University		
LIM College		
Louisiana State University		
Loyola University Chicago		