

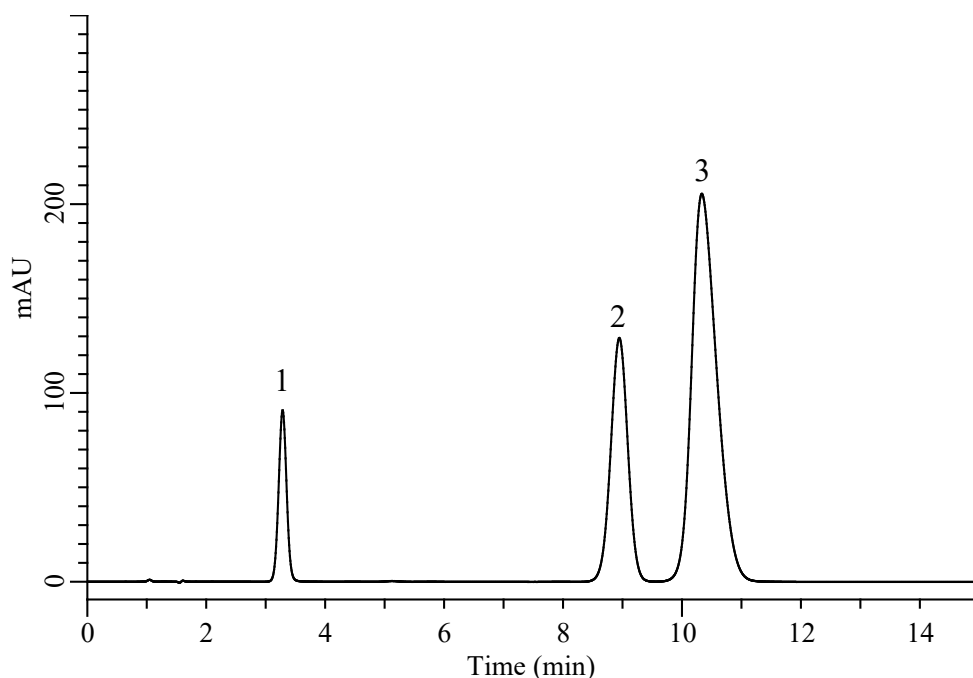
# InertSearch for LC

Inertsil Applications

## Analysis of Ampicillin and Sulbactam

(Under the Condition of the Japanese Pharmacopoeia 18<sup>th</sup>, Ampicillin Sodium and Sulbactam Sodium for Injection)

Data No. LB806- 7111



### Conditions

**System** : Chromaster HPLC system (HITACHI)  
**Column** : Inertsil ODS-HL (GL Sciences Inc.)  
(10  $\mu$  m, 150 x 4.6 mm I.D.)  
**Column Cat. No.** : 5020-89550  
**Eluent** : CH<sub>3</sub>CN/Buffer\* = 2/23, v/v  
**Flow Rate** : 1.4 mL/min  
**Col. Temp.** : 35 °C  
**Detection** : UV 215 nm  
**Injection Vol.** : 10  $\mu$  L  
**Sample** : Standard

### Analyte:

1.Sulbactam 250 mg/L  
2.Parahydroxybenzoic acid (I.S.) 100 mg/L  
3.Ampicillin 500 mg/L

Resolution (1,2) : 14.64 ( $\geq$  2.0)  
Resolution (2,3) : 2.15 ( $\geq$  2.0)  
RSD of the  
peak area of 1 (%)(n=6) : 0.10 ( $\leq$  1.0%)

\* Dissolve 3.1 g of sodium dihydrogenphosphate dihydrate in 1000 mL of water and adjust pH to 3.0 using diluted phosphoric acid (1 $\rightarrow$ 10).