

Winchelsea Star

Your Weekly Community Newspaper

Since 1977

Vol 48 Ed 18

Tuesday 13 May 2025

winchelseastar.org.au

Packed House for Multiple Sclerosis Trivia Night Fundraiser

See Page 2



Not A Dry Glass In The House

Saturday's trivia night fundraiser for Multiple Sclerosis saw the Barwon Hotel packed to the rafters, and at one point run out of glasses!

By Alice Cloake

The main dining room of the Barwon Hotel was at full capacity on Saturday night as the community showed up in full force to support Winchelsea local Robyn Black in her fundraising efforts for Multiple Sclerosis. Over 130 people participated in the event that was MC'ed by the ever patient and delightfully charismatic Robert 'Snick' Cameron who in his second year seemed to be born for the role. If the elevated decibel level was anything to go by, participation was at an all time high with teams battling it out over four rounds of trivia. As hosts, the Barwon Hotel kept up fantastic service, turning around orders in record time and managing the thirsty crowd, even through a minor glass-shortage emergency. Though the final figure from the night is still being counted, all proceeds will be donated to the 'May 50k' team page and put towards important research.

If you weren't able to attend but would like to contribute there will be a donation box at the IGA.

Thanks to the IGA, Maguires Butchers, Hewitt and Whitty, Knuckkeys, The Vault, Bohemian Glow by Melissa Jane, Kaleb and Sue Berg, Listen to your Body Breakwater, Robert, Monique and the Barwon Hotel for their generation donations. And a special thanks from Robyn goes out to Robert and Monique, in Robyn's words "it wouldn't happen without you"



Local CFA Brigades Against The New Levy

by Tony Phelps

Members from several District 7 volunteer fire brigades met last Friday at the Barunah Park Public Hall, with around 150 in attendance.

The topic of discussion was the State Government's so-called "Emergency Services and Volunteers Fund" which is due to return to parliament this week. This levy replaces the existing Fire Services Property Levy.

The revamped and renamed levy will see a very large increase in costs for all ratepayers - although Councils get none of the levy, the State Government requires Councils to administer, collect and hand over the levy on their behalf.

Farmers in particular will see a 189% increase in their payments - the vast majority of which will stay in Melbourne to fund various institutions such as the Control Centre. The Volunteer Fire Brigades Victoria (ie. union) has calculated that

just 7 cents out of every dollar will be returned to the CFA to help run, maintain and replace its ageing equipment and fleet.

CFA volunteers have already protested this levy with multiple fire trucks parked in front of Parliament House in Spring Street and also in front of Jacinta Allen's Bendigo office. Some have gone as far as returning the keys too.

The new levy legislation will be put to parliament this week, and while it is likely to pass the Labor-majority lower house there is hope that it will be defeated in the upper house where there are 11 Greens and other Senators who could block it.

Councils around and including Surf Coast Shire have all taken official positions against this levy (see Page 20), farming and volunteer firefighter communities are similarly united against it. The meeting at Barunah was unanimous in calling for it to be scrapped.



Urgent Care Services

Victoria

If you need urgent healthcare now but it's not life threatening



Get free support with Virtual Emergency Care

- ✓ Free 24/7 urgent healthcare
- ✓ Video call from your mobile or computer anywhere, anytime
- ✓ Connect to highly skilled emergency doctors and nurses from Victoria's Virtual Emergency Department
- ✓ No GP referral, Medicare card or appointment needed
- ✓ Register now so you're ready to use us in the future



Scan the QR code to
register now or visit:
vved.au/self_registrations



Find out more at **urgentcare.vic.gov.au**

Authorised by the Victorian Government, 1 Treasury Place, Melbourne





Nominations Open To Recognise Victorian Seniors

The State Government is encouraging all Victorians to recognise the valuable contributions of older members of our community by nominating them for the 2025 Victorian Senior of the Year Awards.

Minister for Ageing Ingrid Stitt today announced that nominations are now open for this year's awards, which celebrate older Victorians who generously share their time, skills and experience to benefit their communities.

For more than three decades, the awards have highlighted the important role older Victorians play in strengthening our state - from supporting local communities to leading organisations that drive statewide change.

Last year, Professor Manjula Datta O'Connor was named Victorian Senior of the Year for her work supporting women facing family violence. Other recipients were recognised for fostering inclusion, promoting health and wellbeing, honouring veterans, and empowering fellow older Victorians.

There are six categories of awards in 2025, including:

- The Premier's Award for Victorian Senior of the Year for outstanding and lasting contribution to their community and Victoria
- The Council on the Ageing (COTA) Victoria Senior Achiever Award for significant contribution to local communities
- The Emerging Impact Award recognising new volunteers that are already making an impact in their community
- The Positive Ageing Award for promoting wellbeing and active ageing
- The Promotion of Multiculturalism Award for advancing cultural diversity
- The Veteran Community Award for service to the veteran community.

The awards will be presented in October, at a ceremony as part of the annual Victorian Seniors Festival. All eligible nominees will receive a certificate of recognition for their contributions.

Nominations are open online until Sunday 1 June and nominees must be aged 60 years or older, or 50 years or older for Aboriginal and Torres Strait Islander Victorians.

To nominate a deserving older Victorian, visit seniorsonline.vic.gov.au/awards.



Introducing Candice

Candice has a passion for getting people moving and feeling better in accordance with the osteopathic principles that "everything is connected", and believes that each body has a story to tell. Having treated patients for 21 years and counting, she has developed and continually honed her skills, especially in helping those with complex conditions.

"There is a lot of feedback we obtain from each patient in a treatment; how responsive the muscles are to treatment, the state the nervous system is in, the efficiency of the circulatory system, taking blood to our tissues to allow for healing, the lymphatic system... how is it working overtime to remove infection. Each body is so unique in its presentation, which is why I'll forever be learning as an osteopath."

Candice values connection and kindness and is committed to listening to your goals of treatment and feels honoured to be a part of your journey back to health.

- Visit us at 40 Main Street, Winchelsea (next door to the Foxes Den)
- Call 5267 2948
- Online bookings available www.winchelseaosteopathicclinic.com.au



WINCHELSEA Osteopathic Clinic

Back pain • Neck pain • Sporting injuries • Headaches • Shoulder pain • Sciatica

Ph: 5267 2948

40 Main Street (next to the Foxes Den)

Book online:

www.winchelseaosteopathicclinic.com.au



Made for
more
purpose

At Victoria Police, you will enjoy a purposeful career making a real difference in your community. With more benefits including a generous starting salary, 9 weeks paid leave, and access to ongoing training and support. Start your career with Victoria Police today.

Authorised by the Victorian Government, 1 Treasury Place, Melbourne



MADE
FOR
MORE

Winchelsea Taxis is now Surfcoast Taxis

Our fleet of vehicles are growing to all late models and we are covering an extended area including Winchelsea, Colac, Bannockburn, Inverleigh, Great Ocean Road and Geelong.

We have a fleet of 10 seater Maxi Vans, all with capacity to carry wheelchairs.

Surfcoast Taxis Pty Ltd
All Bookings: 0408 325 992
Fax: 5267 2699
Email: bannotaxis@gmail.com
(Admin or Stan 0429 672 888)
66A Batson Street
Winchelsea 3241



Accounts NDIS provider. TAC, DVA etc

NDIS provider number 4050001044
NDIS provider number 4050001048



PAPER LOGS & ROLLS

No Chainsaw Needed
Made By Recycled Paper
Environmentally Friendly
Ash Good For Garden



1 Roll

\$2

Pack of 4 Logs

\$5

By using paper logs you save trees



Contact
Any Lion

All money raised used for local community



What Is The Winchelsea Planning And Infrastructure Committee?

We are a Subcommittee under Growing Winchelsea with a valuable opportunity to advocate for what our community does and does not want to see in the future of our town.

It is no secret that Winchelsea will see a lot of change in the coming years, it is crucial that we advocate for the future of Winchelsea and the ways it is developed.

The committee currently views the following as important topics for discussion:

- Transport, road maintenance, Truck traffic's impact on the town and roads and Improvement of our Railway and access to the train system
- Residential development, where new development might be located, important design aspects of housing estates and connectivity with the existing town layout.
- The future of Winchelsea Primary School and education in general for a growing population, is a P-12 in our future to accommodate future demand?
- Future in-town employment opportunities, support for new and existing small businesses.

Are you passionate about the future of Winchelsea?

The planning and infrastructure committee invites all community members with ideas and/or concerns about Planning and infrastructure in Winchelsea to come along to our next meeting on Monday 26th of May 6.30pm – 8.30pm in the Uniting Hall meeting room.'





Experience a world of wow across Museums Victoria

Wonder at Horridus, our 67-million-year-old triceratops fossil at **Melbourne Museum**.

Discover a world of science at **Scienceworks**.

Connect with people and their stories from around the world at **Immigration Museum**.

Plus, at all of our museums, children visit for free!

Museums Victoria - a world of wow. Visit now.





Be Alert To Poisonous Mushrooms Growing In Victoria

Victorians are being reminded to be vigilant, with poisonous mushrooms becoming present in the community during autumn as the weather becomes wetter and cooler.

Victorian Chief Health Officer Dr Christian McGrath is encouraging Victorians to be on the lookout for wild mushrooms growing in home gardens and publicly accessible areas.

Poisonous mushrooms including death cap mushrooms and yellow-staining mushrooms become more evident in Victoria at this time of year, and initial symptoms of poisoning can include stomach pains, nausea, vomiting and diarrhoea.

Dr McGrath said it was important to remove any wild mushrooms growing in home gardens to avoid young children and pets coming into any contact with them.

"Adults and children should not touch wild mushrooms with their bare hands, let alone eat them, and animals should be kept well away from them," Dr McGrath said. "Anyone who collects and consumes wild mushrooms of unknown

species is putting themselves at risk of potential poisoning and serious illness. Consuming a death cap mushroom can be fatal."

With no home test available to distinguish safe and edible mushrooms from poisonous mushrooms, it is recommended to only eat mushrooms bought from the supermarket, greengrocer or another reputable source.

"Unless you are an expert, do not pick and eat wild mushrooms," Dr Christian McGrath said.

Wild mushrooms growing in home gardens should only be removed by wearing gloves, carefully placing them in a bag and disposing of them in a closed general waste (landfill) rubbish bin.

If you or anyone in your care may have eaten a poisonous mushroom, do not wait for symptoms to occur. Call the Victorian Poisons Information Centre immediately on 13 11 26 (24 hours a day, 7 days a week) for appropriate advice.

If a person has trouble breathing, collapsed, is having a fit or is suffering an anaphylactic reaction, immediately call 000 for an ambulance. Do not call the Victorian Poisons Information Centre in an emergency.

If your pet has ingested a wild mushroom, contact the Animal Poisons Helpline on 1300 869 738 for advice.

Search for 'Mushroom poisoning Better Health Channel' for more information,

Melbourne International Comedy Festival ROADSHOW 2025



Thursday | 22 May 2025 | 7:30pm

**Bringing together the brightest stars from the
2025 Melbourne International Comedy
Festival, we're delivering top-tier humour
straight to Colac!**

**The 2025 Roadshow will be hosted by
Marcel Blanch-de Wilt with special guests
Alexandra Hudson, Bronwyn Kuss,
Con Coutis & Matt Stewart!**



**Ticket \$48 | Concession \$43 | COPACC Member \$38.40
BOOK NOW via QR code or at
copacc.com.au | Box Office | 03 5232 9418 (#2)**

Winchelsea Men's Shed For the Community

NEW MEMBERS WELCOME

Every Wednesday from 9.30am
51 Hesse Street, Winchelsea

KINDLING/OFFCUTS \$7.00 bag

Pickup Wednesdays 9.30-2.30
For delivery, call Bill 0438 083 373

NESTING BOXES Birds/animals

NEED A JOB DONE?

Woodworking, Furniture Repairs
Call in Wednesdays to order

Ray Atkinson (Co-ordinator) 0407839139
winchmenshed@gmail.com





Life's busy. Let us help you.

Contact us today

We can help you with:

- Buying your first or next family home
- Saving for your first home
- Residential Investment Lending
- Refinancing from your current lender
- Home loan reviews
- Pre-approvals

With extensive banking experience and financial expertise, we'll help bring your financial goals to life.



Ebony Berg
0400 784 249



Josie Kavenagh
0409 564 192



Community Bank
Winchelsea and District

A family business operating for more than 138 years, HF Richardson services an extensive client base throughout the greater Winchelsea area. Our success is built on a long history of innovation and while we've moved with the times, our basic values of honesty, trust and integrity have remained.



Eric Foster
0429 499 924
Sales Executive



Ken McDonald
0418 524 150
Licensed Estate Agent

HF RICHARDSON

PROPERTY

www.hfrichardson.com.au

Residential | Rural Lifestyle
Agricultural Farms



Strength training and martial arts
for the whole family in Winchelsea

PERSONAL TRAINING
STRENGTH CLASSES
KIDS KUNG FU
BOXING

Intro Deal:
\$35 for
2 weeks*



0401417387
sunnygym.com.au
evan@sunnygym.com.au

*group classes only, excludes personal training.

Scott McDonald
0423 413 829



S.J.R AUTOMOTIVE
ADN 042 403 040 309
13 ALSDOR DRIVE, WINCHELSEA VIC 3241

NATURAL GAS CONNECTIONS

M. & L DRAYTON
PLUMBING SERVICES

YOUR LOCAL LICENSED

- PLUMBERS (24356)
- GAS FITTERS
- GAS CONVERTERS
- CARBON MONOXIDE TESTING

MARK 0428 520 142



Mat Pilates

7pm Thursdays in the Winchelsea Shire Hall

Classes Start this Thursday May

First Class is 15th! *Please BYO Mat*

FREE

Guided movement that supports strength and postural alignment, with a strong focus on flexibility, balance and the mind-body connection. Move with intention, build resilience, and feel more at home in your body - regardless of experience or age.



A little about Paige

'I teach Pilates to help people feel strong, confident, and in harmony with their bodies. I'm trained in Mat work and reformer Pilates through APPI (Unite Health), with a foundation in developing a mind-body connection. I'm a hands-on instructor who focuses on alignment and form to help you move with ease and reconnect with your body.'

Mother Goose Song & Rhyme

Every Wednesday at 2pm

During school terms

Free for parents and caregivers with children of all ages. No bookings required just come and join in!

Winchelsea Knitting Group

Thursday Mornings 10.30 – 12pm

All Welcome, come along and learn to knit or bring a project to work on whilst enjoying a cuppa and a chat in the Winchelsea Community House.

Tai Chi

Friday Mornings, 9.00am – 10.00am

In the Helen Verity Room,
Winchelsea community house

\$10 per session

Phonics with Robot Reg

Friday Mornings

Walkers – 2 years 10.15am

Pre-School 3 – 5 years 11.15am

'A fun, High energy class to introduce and teach Phonics Skills to Kids'

Bookings at robotreg.com.au

Chatty Café

Fridays 10.30am – 12.30pm

"Sip, Chat, Share, Care" in the Winchelsea Shire Hall.
Everyone Welcome, Gold coin donation.

Crochet Group

1.30pm in the Winchelsea Community Centre

Every Second Saturday, Next class May 17th

\$5 per class

Book your spot at reception@winchhouse.org.au

WINCHELSEA CHEESEMAKING WORKSHOP

Please Register your interest with
shirehall@winchhouse.org.au or call us 03 52672028



Letters to the Editor

Dear Editor

"A random act of kindness"

Yes it still happens!!

Anzac Eve at our shopping centre, two men (RSL members) were selling Anzac badges. They were chatting to some chaps before they were heading north on holidays.

They presented the badge sellers with a box each of chocolate coated Anzac biscuits.

Thank you for being there was all they said before going back to their packed up car and drove away.

The biscuits were yummy.

Julie Loone.



Winchelsea Star

**Winchelsea Star Production Meeting @ Coffee
Saturday 26 April 2025 9-10am**

Winch locals are invited to come along to a coffee meeting on the last Saturday of each month @ Sweet Thyme, Winchelsea. Your comments or suggestions, feedback, ideas for stories or coming events are welcome - or simply to say Hi!

send your stories
news@winchelseastar.org.au

LOCAL NEWS WELCOME

HOW TO SUBMIT

- Email news@winchelseastar.org.au
- Leave hard copy at IGA Supermarket

Please include name and address of author

DEADLINE 5pm Fridays

4pm Sundays - hard copy articles left at IGA

6pm Sundays - sports results and weekend events

EDITOR 5273 0295

Leave a message

ADVERTISING

advertising@winchelseastar.org.au 5273 0294

free email subscription
www.winchelseastar.org.au

join us on facebook
facebook.com/TheWinchelseaStar

production

Editors:	Cerrie Forgan, Yvonne Stevens, Judy Cameron
Advertising:	Sasha Gauntlett, Neil McInnes
Design:	Susan Corby, Tony Phelps
Printed by:	Winchelsea Community House
Website by:	Winch Websites

committee

President:	president@winchelseastar.org.au Neil McInnes
Treasurer:	treasurer@winchelseastar.org.au Cathy Cheadle
Secretary:	secretary@winchelseastar.org.au Tony Phelps
Members:	Mick O'Mara, Linda Carter, Susan Corby, Sasha Gauntlett, Judy Cameron, Yvonne Stevens, Cerrie Forgan



© Winchelsea Star Org. Inc. All rights reserved
Winchelsea Star Organisation Inc.
Reg. No. A0053999F ABN 75 941 529 279
winchelseastar.org.au PO Box 5 Winchelsea 3241

Views expressed are not necessarily those of the Winchelsea Star or Committee. The Winchelsea Star reserves the right to edit or not publish any article.



Winchelsea Star COMMUNITY NOTICEBOARD

email editor@winchelseastar.org.au or leave at Winchelsea IGA

WINCHELSEA TENNIS CLUB JUNIOR COACHING

Mondays from 3.30pm
with experienced Nicole Mullen, \$10

RUNNING GROUP

Winchelsea has a small run group. Its more of a social run, jog and chat. We wait for slower runners and walk when one of us needs a rest. The aim is 10k with the option of 8 or 5k it's up to you.

To finish, a coffee at La Hoot.

Sunday mornings 8am at La Hoot.

LIONS CLUB

Recycled compressed paper logs

Great for wood burners, fires and fire pits. Burn for over an hour, ash great for gardens, no chainsaw needed.

Pack of 4 logs \$5, small rolls \$2

Contact Alan 0476 47522

CUBS AND JOEYS

For information, or to get involved, contact Marie McPadden 0409330147 or mcpadden630@bigpond.com

WINCHELSEA PICKLEBALL

Winchelsea Leisure Time Centre
Wed 7-830pm or Thurs 10-11.30am

All equipment supplied

Wear suitable footwear

Lesley Mathison 0438 672 197

WINCHELSEA GIRL GUIDES

Welcomes girls 6-15 yrs

Mondays, 4.30pm-6pm during school term
St John's Catholic Church Winchelsea
Guiding provides fun, friendship, and adventure. Developing teamwork, and leadership skills, whilst girls achieve goals, improve communities and grow in confidence.

3 FREE sessions to come along and try.

Yvonne Orchard ph 0448 672 630

or Lily Dell Rennie ph 0428 936 441

WINCHELSEA OP SHOP

Winchelsea Op Shop is accepting donations again.

Thanks for your ongoing support
Winchelsea and community.

Don't forget our specials - bag of children's clothes \$5.

Books, puzzles, CDs all 1/2 price still.

Opening hours Friday, Saturday and Sunday and Monday, 10 till 3.

DEFIBRILLATOR MISSING

The newly installed Defibrillator outside the Netball change rooms has been missing for some weeks.

If it could be replaced asap that would be great, no questions asked.

These Defibrillators save lives

SHOPPING AND A CUPPA AT WAURN PONDS SHOPPING CENTRE

for Winchelsea Seniors Card Holders

Do you find it difficult getting in and out of Geelong to do your shopping?

Would you like to meet and connect with other Winchelsea Seniors and do your shopping or have a cuppa?

We have some new dates:

- **Wednesday 21 May**
contact Neil on 0408 102 802 to book
- **Wednesday 28 May**
contact Jill on 0427 633 277 to book
- **Wednesday 11 June**
contact Neil on 0408 102 802 to book
- **Wednesday 25 June**
contact Jill on 0427 633 277 to book

More dates to come for July and August.

Pick up from your home between 9am and 10am, leave Waurn Ponds at 1.30pm and drop off at your home. You will get a reminder call.

Vehicle: 12-seater Surf Coast Shire Council community bus so spots are limited!

Cost: Gold Coin Donation

**Must have a Seniors Card to be eligible.*



Social Bridge is played
TUESDAYS 10 AM - 12 NOON
Senior Citizens Centre
36 Harding Street Winchelsea
New players always welcome
Elaine Atkinson 0458 009 616



Help is available
Speak with someone today
Available 24 hours

13 11 14



Winter is almost upon us it's now time to stock up on kindling to help keep that fire going.

Large bags for only \$7

Pick up or delivery can be arranged

Please contact the Men's Shed

Or call in at 51 Hesse Street



PAPER RECYCLING

Paper depot rear of
Senior Citizens
Rooms
Harding Street
**NEWSPAPERS
MAGAZINES
PHONE BOOKS**


All money raised used
for local community
0408 520 606

What's on Weekly



DATES TO REMEMBER

King's Birthday
Monday 9 June 2025



Fun, Interactive music sessions for pre-school children (0-4 y.o.) and parents/caregivers

When: Mondays from 10 to 11 am
(runs during school terms)

Where: St Thomas' Hall
25 Barwon Tce.

To Enquire ring: 0407838256

MONDAY-FRIDAY

WINCHELSEA COMMUNITY HOUSE
9am-2pm, 28 Hesse St, Winchelsea
(03) 5267 2028

WINCHELSEA TOY LIBRARY
9am-2pm (03) 5267 2028
Winchelsea Community House,
28 Hesse St

MONDAY-SATURDAY

WINCHELSEA HEALTH CLUB
Accessible - 24 hours
Staffed hours -
Mon/Wed 6am-12pm, 5-7pm
Tues/Thurs 9am-12pm, 3-7pm
Frid 6am-12pm,
Sat 7-11am
Eastern Reserve, 70 Hopkins St
5267 2336.

MONDAY

**WINCHELSEA PRIMARY SCHOOL
PRINCIPAL TOUR**
12 May 2025 8.45am
60 Main Street Winchelsea
52672134

**WINCHELSEA PRIMARY SCHOOL
MEET THE TEAM**
16 June 2025, 23 June 2025 9-10am
La Hoot , 1 Willis Street Winchelsea
52672134

CO-WORKING & STUDYING SPACE
Mon & Thurs 9am-2pm \$10
Winchelsea Community House,
28 Hesse St, Winchelsea

JUNIOR TENNIS COACHING
3.30pm \$10 (03) 5267 2667
Tennis Club, Armytage St, Winchelsea

GIRL GUIDES
4.30pm-6pm (School term)
St John's Church, Cnr Mercer /Harding St
Yvonne Orchard 0448 672 630
Lily Dell Rennie 0428 936 441

1ST MODDA/1ST WINCHELSEA SCOUTS
Cubs: 6:30-8pm (School term)
Modewarre Hall, Cape Otway Rd
Marie McPadden 0409 330147

VINYASA YOGA
7pm \$25
Winchelsea Shire Hall, 28 Hesse St

WINCHELSEA TENNIS CLUB AGM
19 May at 7.30 p.m.
Club Room, Armytage St. Winchelsea

Lesley Mathison 0438672197

TUESDAY

**WINCHELSEA PRIMARY SCHOOL
PRINCIPAL TOUR**
6 May 2025 8.45am
60 Main Street Winchelsea
52672134

SOCIAL BRIDGE
10-12pm
Senior Citizens Centre, 36 Harding St
Elaine Atkinson 0458 009 616

1ST MODDA/1ST WINCHELSEA SCOUTS
Joey's: 5-6pm (School term)
Scouts: 6:30-8:30pm (School term)
Modewarre Hall, Cape Otway Rd
Marie McPadden 0409 330147

**WINCHELSEA PRIMARY SCHOOL
OPEN AFTERNOON**
13 May 2025 4.30-5.30
60 Main Street Winchelsea
52672134

WEDNESDAY

**BUS TO WAURN PONDS SHOPPING
CENTRE FOR SENIORS**
Wednesday 21 May, 28 May
Wednesday 11 June, 25 June
Neil 0408 102 802, Jill 0427 633 277

WINCH WALKERS
9:30-10.30am
Mud Hut (Opposite La Hoot Cafe)
Barwon Terrace, Winchelsea
ralexander@hesse.vic.gov.au

WINCHELSEA MEN'S SHED
9.30am, 51 Hesse Street, Winchelsea
Ray Atkinson 0407839139
winchmenshed@gmail.com

WINCHELSEA SENIOR CITIZENS CENTRE
Wednesdays 1 00 pm- 3.00 pm
36 Harding Street, Winchelsea
Jean Shinnars 52672263, 0427672263
jeanshinnars@gmail.com

MOTHER GOOSE SONG & RHYME
2pm (School term) FREE
Winchelsea Community House, 28 Hesse St

WINCHELSEA HISTORICAL SOCIETY
Wednesday 1-4:pm, Friday 10am-3pm
Hesse St, Winchelsea
www.facebook.com/
Winchelseaanddistricthistoricalsociety

1ST MODDA/1ST WINCHELSEA SCOUTS

MAY/JUNE

This is a recurring calendar. Please confirm event details with the organiser/venue if you'd like to attend.
To add an event to the calendar, please email news@winchelseastar.org.au

Venturers: Wed Walton's Rd Venturer Den
Marie McPadden 0409 330147

CWA WINCHELSEA

2nd Wed each month 7-8.30pm
Senior Citizens Rooms, Harding St
winchelsea.cwa@gmail.com

SES WINCHELSEA

7.30pm 132500
323 Mousley Drive, Winchelsea

THURSDAY

COWORKING & STUDYING SPACE

Mon & Thurs 9am-2pm \$10
Winchelsea Community House,
28 Hesse St, Winchelsea

WINCHELSEA PLAYGROUP

10am-12pm (School term) \$5
St Thomas Hall, 27 Barwon Terrace
winchelseaplaygroup@gmail.com

PICKLEBALL

10-11.30am.
Lesley Mathison 0438 672 197
Leisure Time Centre,
Gosney Street, Winchelsea

WINCHELSEA KNITTING GROUP

10.30am-12pm FREE
Winchelsea Community House,
28 Hesse St, Winchelsea

WINCHELSEA COMMUNITY FOODBANK

12-2pm 30 Hesse St, Winchelsea
healthpromotion@hesse.vic.gov.au
0417 848 292

MAT PILATES

7pm \$25 Starting 15 May
Winchelsea Shire Hall, 28 Hesse St

WINCHELSEA MOVIE CLUB

7.30 (3rd Thurs each month)
Globe Theatre, Main St, Winchelsea
growingwinchelsea.com/project/winchelsea-movie-club/

FRIDAY

WINCHELSEA PRIMARY SCHOOL PRINCIPAL TOUR

30 May 2025 8.45am
60 Main Street Winchelsea
52672134

TAI CHI

9am-10am \$10
Winchelsea Community House,
28 Hesse St, Winchelsea

PHONICS WITH ROBOT REG

10.30am MINIS (1-3 years)
11.30am PRESCHOOL (3-5 years)

(School terms) Starts 2 May:
www.robotreg.com.au/pages/shae

CHATTY CAFÉ VOLUNTEER EDITION

10.30am-12.30pm Donation
Winchelsea Shire Hall,
28 Hesse St, Winchelsea

WINCHELSEA HISTORICAL SOCIETY

Wednesday 1-4:pm, Friday 10am-3pm
Hesse St, Winchelsea
www.facebook.com/Winchelseaanddistricthistoricalsociety

WINCHELSEA SENIOR CITIZENS CENTRE

Fridays 1.00 pm - 3.00 pm
36 Harding Street, Winchelsea
Jean Shinnars 52672263, 0427672263
jeanshinnars@gmail.com

GEELONG REGIONAL LIBRARY (MOBILE)

2-5pm, Old Shire Hall, 28 Hesse Street
0408384331 (During scheduled stops)

SATURDAY

TREBECK RESERVE PARKRUN

8am Sussex St, Winchelsea
www.parkrun.com.au/trebeckreserve/

FLOW YOGA

8am, \$25
Winchelsea Shire Hall,
28 Hesse St, Winchelsea

WINCHELSEA LAND AND RIVERCARE MONTHLY WORKING BEE

9am 5 June 2025
At the River. All welcome
Bring gloves and long trousers
Rod Stone 0428 549318
Stewart Mathison 0428 672054

FROM SCRAPS TO SOIL

HOME COMPOSTING AND WORM FARMING

Sat, 24 May, 10am - 11:30am AEST
Common Ground Project, Freshwater Ck
<https://events.humanitix.com/from-scraps-to-soil-series-composting-and-worm-farming/tickets>

WINCHELSEA STAR

PRODUCTION/COFFEE MEETING

10-11am (Last Sat each month)
Sweet Thyme Cafe, Main Street
www.winchelseastar.org.au 5273 0295

DIAMOND DOT DAY

10 May 11am - 4pm
Senior Citizens rooms
Harding Street Winchelsea
\$5 for the day or \$10 includes lunch
Tracey 0427500649

CROCHET GROUP

1.30pm 2nd Saturday each month \$5
Winchelsea Community House,
28 Hesse St, Winchelsea
reception@winchhouse.org.au

ST JOHN THE BAPTIST CATHOLIC CHURCH

Mass 5pm each week (Winter season)
Harding St, Winchelsea 0404598558

WINCHELSEA COMMUNITY DINNER

6.30pm (Last Saturday Monthly)
Hall, Harding St Winchelsea
Bring plate & gold coin donation if you can

SUNDAY

RUNNING GROUP

8am Meet at La Hoot

GARDENERS MEET & PRODUCE SWAP

9-10am (Second Sunday monthly)
5 Main Street Winchelsea

WINCHELSEA UNITING CHURCH

Service 9.30am each week
Hesse St, Winchelsea
0475 777 301 uca.winchelsea@gmail.com

WINCHELSEA COMMUNITY MARKET

9-1pm, 1st Sunday each month (except Nov)
Shire Hall car park, Main Street
growingwinchelsea.com/project/winchelsea-community-market/

ST THOMAS' ANGLICAN CHURCH

10am each week Barwon Tce, Winchelsea
0477 672 042, stthomaswac@gmail.com

TEACHINGS OF TRUE CHRISTIANITY

2.30-3.30pm 23 March-11 May
Senior Citizens Hall, Harding St
Joan 0491 971 957, Mella 0418 605 676

WINCHELSEA TENNIS CLUB AGM

Monday 19th May at 7.30 p.m.
in our Club Room in Armytage St.
Winchelsea.

We would love to see some new faces at the club and get more people playing tennis and getting involved!

So come along, have a 'cuppa' and bit of supper, meet some new people and see what our club has to offer!

All welcome!

Any inquiries to Lesley Mathison
0438672197

The Hinterland Collective (THC)

by Richard Lockie

Living on and working with land can often be tough. We build relationships with Place from birth. With the 'progression' of farming from agri- Culture to agri- Business the shared human relationships with place have taken a big drop . Much of the mental health modern dynamics must be connected to this.

What looks like well organized, standardizations and rules to what farmers can and can not do on and off 'their' land is in fact the pretext to our current social and mental landscape.

When farmers, gardeners, producers know of each other they are stronger. When they interact and engage with their community they are stronger. When they receive help from their community even stronger.

By organizing our local resources in place and people we become on route to meet some of our local needs.

What do we produce locally?

What resources allow our potential to collate our collective produce and distribute it to our community as growers and producers?

The admin component of the Community Action Network (CAN) would manage the data sheets of local producers. Veggies to meat. Jam to muffins. This current picture is what is in place currently. It opens place for another question.

What are our needs as a community?

Knowing what our community of locals to businesses actually need as staples that can be produced locally we have a road map. A target to work towards.

What could be produced?

In line with hearing needs THC will be hearing the need for help. No willing workers, capable ones. There are cavities of connection not being made around knowing who needs help and who is a better fit and who is not. The agency component of THC will work again with the CAN network to facilitate connections in the community.

What farms are needing farmers, apprentices, caretakers?

With a sound business focus for the collective the investor component would be a driving fuel for establishing families on Country.

If we make these connections possible we will find people coming and people staying.

What fruit trees are available to manage? There are orchards on farms and in town that go to waste every year because no one has the time to manage them.

THC are the people and trees, orchards, gardens.

Gardens that need gardeners.

Many have no land to grow and many wish for others to grow with.

With lots of potential places to grow , trees to harvest and farms to manage, the CAN would coordinate harvesting, pruning, composting, of a shared orchard and groups or individuals would take on individual gardens or farms for contracted periods of time. The collective potential requires a business component.

- An outlet, a shop. A place to bring the produce regularly if no market exists. If a weekly market for growers existed we would still need a place for excess and produce to be available throughout the week.
- A weekly growers and producers market brings weekly income and it brings community.
- A kitchen to process and add value to excess produce that is not sold.
- A kitchen to cook a community dinner in.

These basics of a kitchen, shop and agency would be a great start of a local hub. THC is just a name to communicate an idea, it could be called anything.

Three social enterprises that could be run by a collection of people or an individual.

If a business plan is done there will only be so much 'cake' to make it viable for a specific number of people per venture. These would be tendered for.

If you have feedback around this idea for social business or wish to be supportive in achieving it feel free to be in touch.

Email: admin@richearth.love

<https://www.facebook.com/RichEarthLove>

Financial Advice Boost For Cancer Patients

The State Government is providing greater access to financial counselling for those affected by cancer.

The Government awarded a \$935,000 grant to enable the Cancer Council Victoria financial counsellors and staff to expand their financial counselling service.

The service gives people affected by

cancer practical advice and guidance to help manage the costs associated with accessing treatment.

The Cancer Council's financial counselling program has helped thousands of Victorians find information about healthcare options, out-of-pocket costs, government benefits, superannuation and insurance, during difficult times in their lives.

The Government announced in January that 16 organisations across the state would share \$15 million in funding to

expand and support the services offered to thousands of Victorians who are experiencing financial hardship, particularly mortgage or rental stress.

This is in addition to the more than \$16 million the Government is already providing this financial year for generalist and specialist family violence and disaster response financial counselling services across the state.

People affected by cancer can access the financial counselling program by calling 13 11 20.

history of winchelsea

Colonial Settlement of Winchelsea and the Batman Treaty.

Written and Researched by Dr. Paul Michael F Donovan, Federation University, of Winchelsea

As European settlement stretched out beyond the shores of Port Phillip Bay in the late 1830s, large squatting runs were taken up, often along the region's watercourses by pastoralists from Tasmania and sealers, whalers and other economic pioneers along the coastline. In 1835 John Batman signed a treaty with elders of the Wurrundjeri people of the Woiwurrung Nation, which the British Crown refused to ratify.



Signing of the Batman Treaty. Artist unknown.

The treaty is problematic because firstly, Batman was attempting to purchase 600,000 acres of Wadawurrung, Boonwurrung, Woiwurrung, Taungwurrung and Gunai/Kurnai land from Woiwurrung people. Secondly, the Aboriginal people Batman employed as interpreters and trackers were from Sydney, and it is unlikely that the intentions of the treaty were clear to the Woiwurrung elders, who likely thought they were agreeing to a Tanderrum, which was a traditional ritual in Kulin nations cultures which allowed safe passage and access to resources to visitors to country, in exchange for gifts in lieu of rent. The treaty is significant because until recently, it was the only example of colonists making any attempt to negotiate their presence in Australia with its traditional owners. It is notable that William Barak, Woiwurrung elder, who was at the signing of the treaty as a child, thought that the treaty was genuine.

The Author of the treaty was Batman's lawyer, J.T. Gellibrand, after whom Mount Gellibrand near Winchelsea and the Gellibrand River was named after Gellibrand and his colleague George Hesse went missing in the area in 1837. At the signing of the treaty, Batman and his colleagues formed an association they called the Geelong and Dutigalla Association, later known as The Port Phillip Association.

Private Settlement of the district ensued. Following the treaty, pastoralists from Tasmania joined Batman's Port Phillip Association, bringing such names as Armytage, Austin, Ricketts, Mercer, Russell, Roadknight, Highett, Ricketts, Hopkins, Harding to the area bringing thousands of sheep and opening large squatting runs covering tens of thousands of acres between Winchelsea and Geelong. These names and their impacts on the Winchelsea area will be revisited in more detail in the coming weeks. Winchelsea town was established as a community hub for travellers, workers and pastoralists of the district. The legacy of this can be seen in the fine collection of colonial pastoral mansions which surround the township of Winchelsea.

Agriculture was the backbone of Winchelsea's early economy, with crops and livestock being primary products, mostly dominated by sheep for meat and wool. The Winchelsea district played a key role in the colonial wool industry, with wool being taken to Geelong, which was at the time known as 'Wool Capital of the World', the hub of the industry in Australia and a key port for shipping wool globally. Australian wool played a crucial role in the British Empire's economy and industries, especially from the late 18th century onwards. The wool industry was a key part of the Industrial Revolution as Australian wool was processed in British mills driven by revolutionary steam powered engines. Wool accounted for a significant portion of Australian exports, ranging from one-third to half from the 1860s until World War II.



Wool Drays. Artist, Samuel Thomas Gill. Printed in colors by Hamel & Ferguson, Melbourne [1864]



Mícheál P O'Dhonnabháin has lived in the Winchelsea area since 2010.

Michael completed a Bachelor in History and Anthropology and a Master of Cultural Heritage at Deakin University, then went on to complete a PhD at Federation University, focusing on colonial and European collections of Indigenous Australian Cultural Heritage. Michael lectured at Federation and Monash Universities, lecturing in World History, Folklore Studies, Indigenous Studies and literary studies. Michael has worked in museums and cultural collections across Victoria, and can usually be seen in and about Winchelsea with his wolfhound.

TIP TRUCK HIRE

- * FRONTEND LOADER
4 IN 1 BUCKET
- * DRIVEWAYS
LEVELLED OFF
- * RUBBISH REMOVAL
- * GRASS SLASHING
& RIDE ON
MOWER JOBS

VINCE

0412 840 704

CONCRETER

- * DRIVEWAYS
- * FOOTPATHS
- * KERB & CHANNEL
- * GARAGES & SHED SLABS
- * STEPS
- * WHEELCHAIR RAMPS
- * VERANDAHS
- * PATIO AREAS
- * PLAIN OR COLOURED
CONCRETE
- * CONCRETE CUTTING
& REMOVAL

VINCE

0412 840 704

WANT TO JOIN PROBUS?

Enjoy fellowship with
other members

Enjoy trips & outings

Listen to guest speakers



Contact Lorraine
0417 467 927

WINCH WEBSITES
WEB SOLUTIONS SIMPLIFIED.

WEBSITES

GROW business
INCREASE reach
SAVE time



Find out what a website
could do for you
winchwebsites.com.au
04 887766 20

MRP Steelworx

Matthew Partridge
p 0418 672 334
e mrpsteelworx@yahoo.com.au

Welding Service

- Onsite welding
- Farm maintenance
- Farm machinery &
equipment repairs
- Cattle & sheep yards
- Custom built trailers
- Supply & install gates

STS
ACCOUNTING
GROUP

**Your Taxation
&
Superannuation
Specialists.**

Winchelsea

5267 2673

www.surftax.com.au



5234 6585 0417 385 984

*For all your septic tank, grease traps
and interceptor pits servicing.
Locally owned and operated*

Water Delivery

WAZZA'S
WATER CARTAGE

Stainless Tanker Up to 22,000 ltr loads
Barwon Water Registered

Domestic & Rural Water Supplies

Call Wazza
Mob: 0428 877 260
Email: wazza@wazzas.com.au

Web: wazzaswater.com

Knuckey's Winchelsea
Ph: 5267 2011

Knuckey's have in stock a complete
range of batteries to suit tractor,
heavy machinery, cars, utes

The largest range of the best oil for
your vehicles—**CASTROL**—
'when only the best will do'

The largest range of V belts.
A, B, C, D M Sections
Bolts and nuts for all occasions
Steel cut to size

OZ TREES NURSERY & TREE PLANTING SERVICES

- Affordable seedlings—over 200 species
- Complete plantation service—farm forestry,
shelter, aesthetics
- Deep ripping & mound ploughing. Rotary
bed forming
- Our experienced staff will help you select
species for your site conditions and needs
Also available—tree planting tools, milk cartons,
plastic tree guards & bamboo stakes

569 Warrowie Rd. Colac
P: 5233 6280 F: 5233 6393
E: info@oztrees.com.au
W: www.oztrees.com.au
Open Monday—Friday
9am—4:30pm



Phone OzTrees for professional advice,

Applications are now open to work at the 2026 state election

Applications are now open to work at the 2026 state election with the Victorian Electoral Commission (VEC) recruiting more than 1,000 senior election officials across Victoria.

Senior election officials play an invaluable and significant role in coordinating elections for entire districts and local councils.

Acting Electoral Commissioner Dana Fleming said that the role is a critical pillar of delivering democracy at a local level during elections.

'You don't need previous election experience. It's all about the skills and life experience you can bring to the role – if you're organised, have a good eye for detail, and most importantly bring a positive attitude, that's what we're looking for,' Ms Fleming said.



Victorian Electoral Commission

The VEC also plays a critical role in the education and inclusion of Victorian communities who are traditionally under-represented at the ballot box. For the 2026 state election our senior election officials will be engaging with these communities by delivering outreach services, raising awareness about the democratic processes.

Ms Fleming said elections are a rewarding experience, working with community and ensuring we deliver fair and trusted elections.

'Many of our senior election officials have now been working with us for more than 20 years and we are proud to have

their experience and depth of knowledge in our organisation.'

'If you're a business owner, if you're retired or semi-retired, if you're a parent, if you're an artist, or a coach of the local footy club – we want to hear from you,' Ms Fleming said.

Applications are open until 25 May, at careers.vic.gov.au/job/senior-election-officials-855486

The skills you already have, can help you make a positive impact as a Prison Officer.

Discover a rewarding and secure career as a Prison Officer. Apply now and receive an \$8,000 sign on bonus.*



**Corrections
Victoria**

Hiring now

*Conditions apply.



Authorised by the Victorian Government,
1 Treasury Place, Melbourne



Draft Budget 2025-26

You are invited to make a submission on Council's Draft Budget 2025-26 and Draft Revenue and Rating Plan 2025-29.

Fast Figures

Here are some of the ways the budget will support the Surf Coast Shire community:

\$850,500

Contribution to local libraries - Geelong Regional Library Corporation (Council Service)

\$87,000

Christmas decorations and activations

\$160,000

'Branching Out' urban tree planting program

\$152,813

Great Ocean Road Regional Tourism contribution

\$148,600

Community grants

\$119,155

Winchelsea Pool summer season operation

\$64,600

Life Saving Victoria contribution for Surf Coast beaches

\$50,000

Increased unsealed road dust suppression program

\$31,700

Support to Community Houses

\$24,740

Surf Coast Arts Trail



Council Budgets are full of numbers but they're really about the lives of the people in our community.

In a challenging economic environment, our Draft 2025-26 Budget is financially responsible while continuing to invest in the facilities and services you value.

It features funding for an exciting range of new and renewed assets, planning for the future liveability of our region, and a strong focus on our core Council services.

There are initiatives to help the natural environment, generate economic activity, support community-led projects, keep residents safe, and much more.

I encourage you to share your feedback.

Cr Mike Bodsworth
Mayor Surf Coast Shire

Planning for Winchelsea's future

Winchelsea is growing quickly and this is being reflected with Council investment in important projects and facilities for the local community.

Looking to the town's future, our 2025-26 budget features \$80,000 towards a new Winchelsea Place Plan.

It will guide where residential and economic growth can occur in Winchelsea and the infrastructure needed to support a larger population.

This plan will be developed through extensive engagement with the community.

Completion of the new \$8.9 million Winchelsea Pool was a highlight of the past financial year, and in 2025-26 we look forward to the first full



summer season of its operation with a budget allocation of \$119,155.

With reconstruction of the Eastern Reserve netball courts complete, attention will turn to finishing renewal of the reserve's heritage listed grandstand.

Stage two of the Barwon River Loop Walk will be a focus, as will repairs to the historic library building.

We'll also formally complete a handover of land to the SES, granting ownership of the Mousley Road property that hosts its local headquarters.

View the Draft 2025-26 Budget and 2025-29 Revenue and Rating Plan at yoursay.surfcoast.vic.gov.au/budget25-26

How to make a submission:

Online: yoursay.surfcoast.vic.gov.au/budget25-26

Write to: Surf Coast Shire Council
Chief Executive Officer,
PO Box 350, Torquay Vic 3228

Submissions must be received by 10am on Monday 26 May 2025

Anyone making a submission can request to present to Council at a hearing of submissions, which will take place online at 6pm on Tuesday 3 June 2025.

Key dates:

29 April 2025: Draft 2025-26 Budget and 2025-29 Revenue and Rating Plan endorsed for community feedback

26 May 2025: Submissions close at 10am

3 June 2025: Online hearing of submissions at 6pm (if required)

24 June 2025: Council to consider final 2025-26 Budget and 2025-29 Revenue and Rating Plan



Capital Projects Snapshot

Our \$64.25 million capital projects budget includes \$15.11 million for new projects. New projects for Winchelsea Ward include:

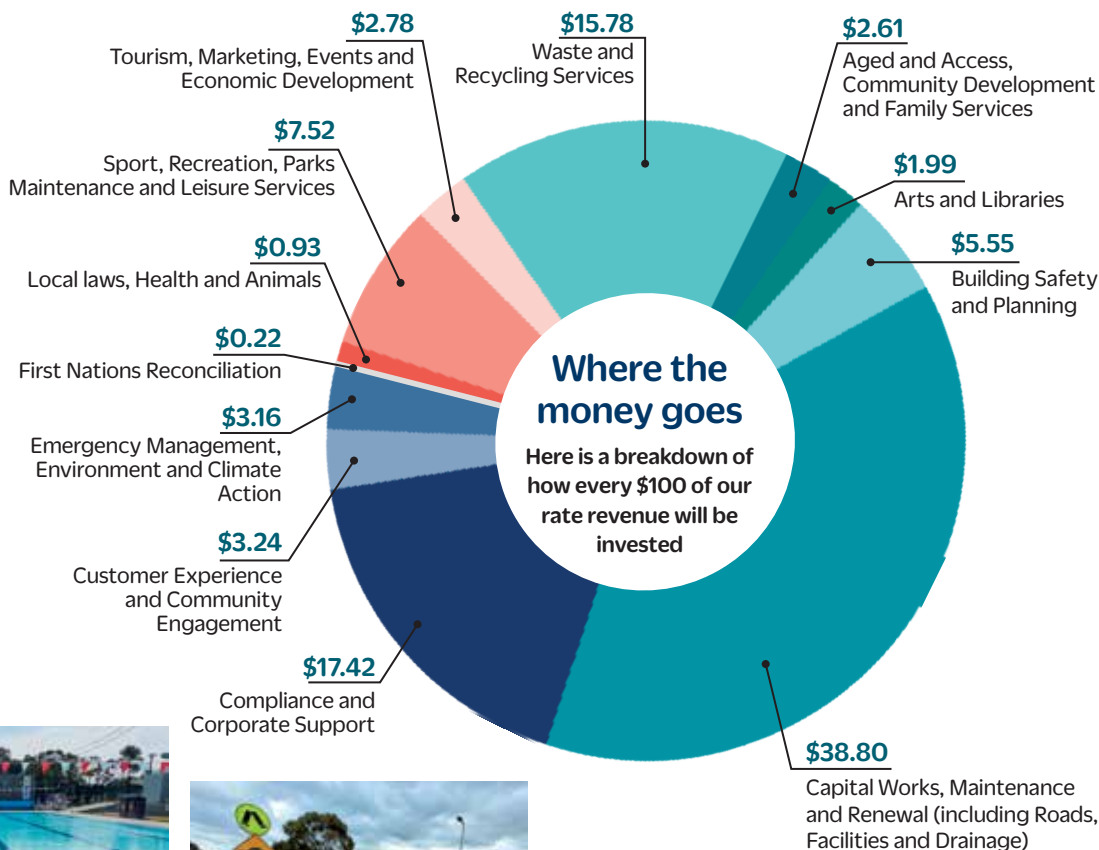
Gladman St upgrade,
Winchelsea
\$757,064

Spring Creek Recreation
Reserve, Torquay, oval
irrigation and drainage
upgrade
\$2.55 million

Sealed road renewal: Cape
Otway Rd from Dysons Lne
to Parish Lne
\$200,000

Unsealed road renewal:
Pettavel Rd, Freshwater
Creek from Dickens Rd to
Mt Duneed Rd
\$152,000

Eastern Reserve
Community Centre,
Winchelsea exterior
painting
\$50,000



Rates

Rates are Council's largest revenue source. The proposed total average rate rise of 3 per cent, which is in line with Victorian Government cap, will help us cover the rising cost of delivering our services and projects.

Draft Revenue and Rating Plan

The purpose of the Revenue and Rating Plan is to determine the most appropriate, equitable and affordable revenue and rating approaches for Surf Coast Shire Council to apply in planning to fund the objectives in its Council Plan.

The Draft 2025-2029 Revenue and Rating Plan proposes to continue using the Capital Improved Valuation methodology and three differential rates (general rate land 100%, farm rate land 75%, and

commercial/industrial rate land 190%), a municipal charge and relevant service charge.



HARDSHIP POLICY

Our Hardship Policy is in place to support ratepayers experiencing financial pressures.

Please reach out to us for a confidential discussion.

Not able to access the internet?

A printed copy of the Draft Budget 2025-26 can be viewed at Winchelsea Shire Hall – 28 Hesse Street.

A relevant section can be posted on request. Please call **5261 0600**.

yoursay.surfcoast.vic.gov.au/budget25-26



Council joins call for Emergency Services Volunteer Fund Bill to be scrapped

Surf Coast Shire Council has joined the list of councils calling on the state government to abandon its proposed Emergency Services Volunteer Fund (ESVF) Bill and associated levy.

During its meeting on Tuesday night, Council voted to write to the Premier and key government ministers to advocate for:

the Bill and levy to be abandoned; or

if the Bill is not abandoned, for the state government to remove the requirement for councils to collect the levy on its behalf (instead collecting directly via the State Revenue Office).

Should the Bill proceed, Council will also request that:

the levy formula be recalculated so that it does not place a disproportionate financial burden on rural and regional

communities; and

the Victorian Government provide a guarantee that any funds collected from rural communities will be directly invested into emergency services funding for those same communities.

The move came as a result of a notice of motion put forward by Cr Joel Grist, which noted that the proposed Bill would have significant impacts on regional ratepayers and place an administrative burden on Councils required to collect the levy.

It noted that the proposed changes from the existing Fire Services Property Levy – which the Emergency Services Volunteer Fund would replace – would disproportionately affect primary producers in the shire.

This is as a result of a proposed 189 per cent increase in the variable component of the levy for primary production land.

An accompanying information report from CEO Robyn Seymour noted that the Bill would result in an increased cost to Surf Coast Shire ratepayers of approximately \$5 million for the 2025-26 financial year.

Mayor Mike Bodsworth said the

agricultural community, which is one of the top five industries in the local area, would be hit hardest if the Bill passes through parliament.

“The levy would mean increased costs across all property types, but the biggest impact would be on our farmers,” Mayor Bodsworth said.

“It would place an unfair and substantial burden on primary production landowners at a time when they’re already under financial pressure as a result of the drought.”

Cr Bodsworth also noted that the government’s plan to have Councils collect the levy was a cost shifting exercise.

“Not only will this method place a heavy strain on Council resources, it will no doubt also be seen by many ratepayers as a Council fee, resulting in reputational damage,” the Mayor said.

“Thank-you to Cr Grist for doing the work on this motion and putting it forward, and to fellow councillors for supporting it.

“It’s important that we’re advocating on this issue for a better outcome for our community.”





OPEN AFTERNOON

4:30PM - 5:30PM



WHAT YOU NEED TO KNOW

We welcome all prospective **2026** families who are considering attending Winchelsea Primary School. It is an opportunity to see the Prep classroom and let your children become familiar with the new environment. The Prep classroom will be open from 4:30pm-5:30pm for families to wander through and stop to talk to staff.

- Meet the Prep Teachers
- Meet the Principal
- Activities for children
- Opportunities to discuss your child's enrolment
- Opportunities to ask burning questions

- Arrive at anytime during the hour
- Enrolment packs available
- All welcome!

CONTACT WINCHELSEA PRIMARY SCHOOL

TUESDAY 13TH MAY

5267 2134



GETTING TO KNOW YOUR PRIMARY SCHOOL!

All events are for any families with children 5 years and under who may be considering WPS in the future!

principal tours

Tuesday 6th May - 8:45am
Monday 12th May - 8:45am
Friday 30th May - 8:45am

Parents are invited to walk through our classrooms and see learning in action with our school Principal.



open afternoon

Tuesday 13th May 4:30-5:30pm

Bring your children to come and explore the Prep classroom. Meet the current Prep teacher and ask any burning questions. All prospective 2026 families welcome.



meet the team

Monday 16th June - 9-10am
Monday 23rd June - 9-10am
@ Lahoot

All families welcome! Come and meet the staff leadership team and our student leaders for a coffee.





Get A Taste Of Surf Coast Arts Trail At This Year's Taster Show

Art lovers are in for a treat with a special taster show offering a vibrant preview of what's to come at this year's Surf Coast Arts Trail.

On the Trail: A Creative Taster, being held 15 May to 1 June at the Anglesea Arts Space, will showcase a diverse selection of works by around 60 artists taking part in the much-loved Arts Trail, coming up in August.

From painting and photography to sculpture and ceramics, jewellery, textiles and more, the exhibition offers a glimpse into the incredible talent spread across the Surf Coast Shire.

"We have an amazing talent pool of artists across the Surf Coast, so this is your chance to see the work of some of our best artists all under the one roof," Cr Libby Stapleton said.

"It's a fantastic lead in event to the



popular Arts Trail weekend, which last year attracted more than 16,000 visitors from around Australia," she said.

One of the exhibiting artists is Jan Juc's Andrew Middlehurst, a contemporary

landscape artist, who has adopted a new technique for his new Woven series of works.

"I'm an impressionist landscape artist who has taken what I've learned over the years to push the boundaries in landscape painting to a point where I've broken all the rules and put them back together one brushstroke at a time."

"I've used a process of repeated vertical brushstrokes and layering of acrylic colour to create something very different. It takes me twice as long as my usual impressionist pieces; there are so many decisions to make, and it is extremely challenging."

Andrew's most-loved places inspire his work, including many iconic Surf Coast landmarks.

"Bird Rock, Jac Juc Beach, Bellbrae's rolling hills, Bells Beach and Point Addis are among my favourite spots.

When I'm bushwalking and mountain bike riding, I take it all in. We are very lucky to live here on the coast, it's a place we should not take for granted."

He encouraged people to get a sense of what's coming up at the Surf Coast Arts Trail by coming along to the Taster Show.

"If you haven't tried it, it really is a must see. So many people are involved, it's part of the culture down here. It's a great opportunity to see what's new or what your favourite artists have been working on."

Andrew spoke about the supportive culture of the local arts community.

"There are so many of us. Rather than it being a disadvantage, it's a huge positive to realise that so many people are sharing their talents. There's always a place to go and someone to talk to. You've only got to walk the dog and you come across a new artist, or speak to a friend who knows someone who is painting or making pottery."

Presented by Surf Coast Shire Council, On the Trail: A Creative Taster will be open Thursday to Sunday 11am-4pm during the 15 May to 1 June period. Anglesea Art Space is located at 2/103 Great Ocean Road, Anglesea.

DANCE CLASSES

TAKING ENROLMENTS NOW
FOR OUR WINCHELSEA STUDIO

PRE-SCHOOLERS - ADULTS
CONTROLLED CLASS SIZES

JAZZ - THEATRICAL TAP - CLASSICAL BALLET
HIP-HOP - CONTEMPORARY DANCE

ENROL TODAY

WWW.MELSDANCECENTRAL.COM.AU



Café La Hoot

have you tried
'owl' coffee?

1 willis st cafe.lahoot@gmail.com 0407 528 999

All About

Mowers & Chainsaws

Repairs to all makes and models of ride on mowers, domestic mowers, pumps, chainsaws, brushcutters and small engines.

Trading Hours: Mon - Fri 8am - 5pm Saturday 8am - 12 noon

5267 2266 Cnr Princes Hwy & Lennox St Winchelsea

www.allaboutmowers.com.au
accounts@allaboutmowers.com.au

FERRIS COX STIHL BRIGGS & STRATTON VICTA



Winchelsea Supermarket

Trading Hours
Monday to Saturday
8.30am to 7.30pm
Sunday
10am to 7pm

Ph: 5267 2676
29 Main St, Winchelsea



SOUTHERN GRAIN STORAGE PTY. LTD.

AG SUPPLIES FERTILISER GRAIN STORAGE SEED CLEANING

(03) 5267 2351



5234 6585 0417 385 984

For all your domestic & stock water.

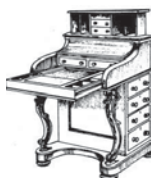
Also available for road and civil construction

Local owned and operated.

Antique Repairs

By **Doug Burns** est. 1976

- All Furniture
- French polishing
- Carving
- Veneering
- Wood Turning
- Porcelain



Unusual Requests Welcome

180 Barwon Terrace, Winchelsea

0428 672 704

TRENCHES & HOLES PTY LTD.



PHILLIP ROBERTSON

☎ 0427 672 945

WINCHELSEA

- General Earth Works
- Driveways
- Trencher
- Kanga Loader
- Grader
- Excavator Work (3.5 & 6.5 Tonne)
- Tip Truck
- Rock Breaker
- Post Holes & Shed Footings

A.B.N 74006896898

Winchelsea Churches



Winchelsea Uniting Church

0475 777 301

uca.winchelsea@gmail.com
Hesse St, Winchelsea 3241

Services 9.30am Sundays

St John the Baptist Catholic Church

0404598558

Father Joseph Panackal
Harding St, Winchelsea 3241
Mass 5pm Sat. May 3, 10, 17, 24, 31

St Thomas' Anglican Church

0477 672 042

stthomaswac@gmail.com
Barwon Tce, Winchelsea
Service 10am Sundays

Thought for the Week

Go through the area in your home
and make three piles.

One pile is to give away to friends
and family.

One pile is to donate to charity.

One pile is to keep.

Everything in this pile should have a
defined place, and purpose in your
home.

Does it??

Have a Blessed week.

John Bader,
Former U/C Accredited
Lay Preacher

Profile of Dr Kale Mazurek, Osteopath

One of the industry's most highly skilled and well loved osteopaths has opened up shop in Winchelsea.

Dr Kale Mazurek moved to Winchelsea with his partner Kate and their children Arthur (5) and Evelyn (2) three years ago.

Now well and truly cemented into the community, Kale is offering local appointments on Thursdays (2 pm – 8 pm) and Saturdays (8 am – 12:30 pm) at the Exchange (the old Post Office building).

Having both grown up in small towns, it was an easy decision for Kale and Kate to settle regionally as their family grew. "We love Winch and have always felt welcomed by the community," Kale said.

As an osteopath, Kale has worked for over 15 years alongside Australia's most renowned practitioners in Melbourne and Torquay. He has a Masters of Osteopathy, a Bachelor of Applied Science from RMIT and is a former educator and tutor at Victoria University.

Kale is knowledgeable in the science of chronic pain and the connections between our body and brain. He's also highly skilled in treating sports, work and overuse injuries, headaches, and post- and pre-natal care.

When asked why he decided to offer his osteopathy services locally, Kale said, "Operating in the community where I live is so rewarding. I'm a one-man show, which means people have been calling, texting, sliding into my DMs or bumping into me around town and I book them in straight away".

When they moved to town in 2022 their hands were full with a newborn, a toddler, a heritage home to maintain and two full-time jobs, Kale admits that self-care and physical health were the

first to drop down the priority list.

"I genuinely want to make it easier and more enjoyable for Winch locals to care for themselves and to reduce pain. To me, this means offering evening and weekend appointments, and spending more time with each client to provide individualised, thorough and holistic treatments."

Kale's favourite time to treat is on a Saturday morning with a coffee in hand. "I'm relaxed, my clients are relaxed and we usually put some music on and have a chat and a laugh".

Kale values inclusivity and considered this when setting up his new business. "I want to be available for everyone, which means offering a safe and welcoming place for people from all ages, backgrounds, identities, and orientations."

What Kale is most looking forward to about running a small business in Winchelsea is collaborating with other

local practitioners. "I'm lucky to be working at the Exchange alongside an excellent group of young Winchelsea-based practitioners who all care about the community and are incredible at their jobs – an exercise physiologist, psychologist, audiologist and myotherapist – I'm excited about what we can grow together for the Winchelsea community".

"I'm only a few weeks in but I'm

thoroughly enjoying giving back to the community and helping people to feel better."

To learn more about Kale or to book an appointment, you can visit Instagram or Facebook (@drkalemazurek), his website (www.kalemazurek.com) or call/text 0417 114 617.



WINCHELSEA CONCRETING

• Driveways • Sheds • Decorative Concrete • Raft Slabs

Robert Murphy

☎ 0438 235 237

✉ winchelseaconcreting@outlook.com

DownRyte Excavations



- Excavations
- Drilling and Piling
- Rock Placement
- Tree and Stump Removal

Sean Hunwick

Mobile: 0409 447 288
Email: downryte@activ8.net.au

direct TEMPORARY FENCING

FOR HIRE • SUPPLIED & ERECTED • 7 DAYS
GEELONG • BELLARINE • COLAC • SURF COAST
PHONE CAM 0417 310 800

SOUTH-WEST — PAINTING — GROUP

Contact us:



0431 719 218



www.southwestpaintinggroup.com.au



matt@southwestpainting.com.au

We specialise in:

- New Homes
- Texture Feature Finishes
- New and Old Cabinetry Coatings
- Commercial Projects
- Maintenance Work
- Residential Work
- Wallpapering
- Pre-Sale Painting
- Timber Decking Rejuvenations

M & L DRAYTON

PLUMBING SERVICES

REG No 24356 C/A No C02594

- Domestic and Rural Plumbing
- Roofing
- Sewerage & Septic
- LPG & Natural Gas Connections
- Motorised Drain Cleaning
- Backhoe Hire

Phone Mark 5288 7244

PO BOX 98 WINCHELSEA 3241

Mobile 0428 520 142



DRIVEWAYS, CARPORTS, CROSSOVERS,
FOOTPATHS, SHED SLABS, STAIRS
HOUSE SLABS, EXPOSED, SEALING & MORE

CONTACT ALISTER NOW FOR A QUOTE

☎ 0411871950

✉ AMACONCRETING1@GMAIL.COM

Winchelsea Football Netball Club Inc

Hopkins St, Winchelsea winchelseafnc@hotmail.com



Junior Netball

Shae Callahan

Winchelsea Baby Blues Having a Blast at NetSetGO!

The next generation of netball stars is already making waves at the Winchelsea Netball Club, with the Woolworths NetSetGO program off to a flying start this season.

Held on Thursday afternoons from 4:00 to 4:45pm, NetSetGO is designed for children aged 5 to 10 years, offering a fun and friendly introduction to the game of netball. With a focus on learning new skills, playing games, and building friendships, it's no wonder the court

has been full of laughter and energy each week.

"The kids are having a fantastic time," says Junior coordinator, Shae. "They're learning the basics of netball in a really positive, supportive environment – and most importantly, they're having fun!"

NetSetGO helps young players develop coordination, teamwork, and confidence while laying the foundation for future involvement with the Winchelsea Netball Club.

Registrations are still open, and families are encouraged to come down, meet the team, and see what all the excitement is about. Whether your child is new to netball or just keen to get involved in a local community sport, NetSetGO is the perfect place to start.



A Strong Start to the Season for Our Under 11's Girls!

Our team had a fantastic start to the season last Tuesday night at Kardinia Park, taking on St Mary's and securing their first win with a convincing score of 20–5. The girls came out strong from the first whistle, leading 13–3 at half-time, and continued their momentum right through to the final siren.

What makes this performance even more impressive is that the team had only trained together four times before the match! Despite limited preparation and only 3 members of the team having played netball previously, every player gave their all. The girls

adapted brilliantly as we rotated positions to give our newer players a chance to try out different roles and tested some fresh combinations in the ring.

Lilly and Mackenzie were standouts on the night. Lilly was consistently involved in the play and picked up several key intercepts, while Mackenzie was a dominant force in goals, scoring 8 out of our 20 goals and working seamlessly with the three other girls rotating through the shooting circle.

In the coming weeks, we'll be focusing on footwork, arms-up defence, and working towards the ball more proactively. We'll also start introducing a few simple systems to

help the team continue building their skills and confidence.

Well done girls — a fantastic start to what's shaping up to be a great season and a very promising young team!



Are you ready? Let's NET SET GO!

Join Woolworths NetSetGO, Australia's leading netball program for kids aged 5 to 10. It's where netball begins but the fun never ends!

Why join?

- Learn new skills to help support your development
- Make friends and build confidence
- Receive special prizes each morning and more during
- Age-appropriate games, which are fun and easy to learn

Starts Thursday 1st May 4pm!

NET SET GO!

Contact Shae 0409641550 for info.

Find out more

For more information or to register, visit the Winchelsea Junior Football Netball Club's Facebook page



SERVICES & ACTIVITIES IN WINCHELSEA

VLINE TRAIN SERVICES

TO MELBOURNE:

Mon - Fri 6.21(coach) 07.55, 11.10, 14.04, 16.58, 19.21
Sat - Sun 9:34, 14.04, 16.58 19.18

TO WARRNAMBOOL:

Mon - Fri 8.58, 11.51, 14.46, 17.28 (coach), 18.43, 20.53
Sat - Sun 8:48, 11.41, 14.46, 20.38



COUNTRY WOMEN'S ASSOCIATION

7pm second Wednesday of month
Winchelsea Senior Citizens' Hall

Join us. *A role for everyone*



Nationally accredited training to help our community.
Pop in to meet your crew **Wednesdays 7:30pm**

Winchelsea Unit 325 Mousley Drive **132 500**

Winchelsea and District COMBINED PROBUS CLUB



Senior Citizens Rooms,
Harding St, Winchelsea.
New members always welcome.
Enquiries Lorraine 0417 467 927



SOCIAL BRIDGE

Every Tuesday 10.30 am - 1.00 pm
Senior Citizens Centre
36 Harding Street Winchelsea
New players always welcome
Contact Elaine Atkinson 0458009616

WINCHELSEA TRANSFER STATION

55 Cressy Road, Winchelsea

Tuesday 2pm-4pm Saturday 1.30-3.30pm
Thursday 2pm-4pm Sunday 9.30-12.30pm



Closed on Christmas Day,
but open on other public holidays
that fall during their normal operating hours.
www.surfcoast.vic.gov.au/disposalsites



WINCHELSEA GIRL GUIDES

Our Unit meets at the Catholic Church Hall,
Harding St Winchelsea each Monday 4.30pm-6pm
All girls 5yrs- 15yrs Welcome!
Contact Yvonne Orchard 0448 672 630
or Lily Del Rennie Ph. 0428 936 441



1st Modda & 1st Winchelsea SCOUT GROUP

Joeys: Tuesdays of school term 5-6pm
Cubs: Mondays of school term 6:30-8pm
Scouts: Tuesdays of school term 6:30-8:30pm
All at Modewarre Hall, Cape Otway Rd
Venturers: Wed at Walton's Rd Venturer Den
Contact Marie McPadden 0409 330147



BUS TO THE HUB

For reservations on the weekly bus
to the Eastern Reserve Hub,
please phone 52671202.

SURF COAST MOBILE LIBRARY

Hesse St, Fridays, 2pm-5pm
Surf Coast Mobile Library
parked in Hesse Street (outside Shire Hall)
Fridays 2:00 and 5:00pm unless it is a Public Holiday.

WINCHELSEA TAXI

0429 672 888 or 5267 2888
Wheelchair accessible
10 seater bus available.

WINCHELSEA PLAYGROUP

Every second Thursday 10am-12pm
St Thomas Anglican Church Hall
cnr Barwon Tce and Hopkins St, Winchelsea
Contact: Danni Menzies 0432019944
winchelseaplaygroup@gmail.com
Facebook - Winchelsea Playgroup 2019
New families welcome

Winchelsea Football Netball Club Inc

Hopkins St, Winchelsea winchelseafnc@hotmail.com



Blues News

Janet Fletcher

Welcome to Blue's News covering the trek out to the Thomson Tigers Godfrey Street Oval where the Blues have a very poor history of playing well against Thomson on their home turf. Injuries have not been kind to the Blues – Indi Parish with a serious elbow injury, while brother Fin out with a broken thumb suffered at training, Jordan Huff injured, Tavae Sauni maybe ok for next week, Braydon O'Hanlon as well as Tayne Henson out of the side, it's a long list....

The domino effect floating down through the Reserves meant some last minute phone calls reminiscent of the old days saw Ricci Sauni and several others pull on the boots, thanks to all who responded and hope the recovery wasn't too severe.

RESERVES:

Winchelsea Blues 3.5.23 were defeated by Thomson Tigers 9.13.67.

The Winchelsea Blues had yet to have a loss and so with the injury list went in a bit underdone for Saturdays match at the Godfrey oval. Huge thanks to the many that responded to field a side for the day.

GOALS: Jake Cook 2, Noah Harvey 1,

BEST: Timothy Miles, Luke Foot, Jackson Timms, Noah Harvey, Tom Kennedy, Rory Elliott.

SENIORS:

Winchelsea Blues 8.7.55 were defeated by Thomson Tigers 19.14.128

The first quarter was a hard fought low scoring affair with the Blues well and truly holding their own even with the massive restructuring of the team due to injuries, the

second saw Thomson gain ascendancy but still well within the Blues grasp. The third saw the Blues completely out played and a three quarter time blistering address by the Coaching staff saw the Blues salvage some pride but suffering none the less the worst defeat for quite some time. All at the Club wish all those with injuries a speedy recovery and look forward to seeing everyone back out on the footy field as soon as possible.

GOALS: Cameron Primmer 2, Finlay Kersopp-Cole 2, Caleb Brown, Riley Berg, Joshua Freeman, Mitch Thomas all 1 goal.

BEST: Mitch Thomas, Josh Freeman, Fin Kersopp-Cole, Rueben James, Ollie Mahncke, Luke Henry.

This week the Winchelsea Blues are on the road again to Victoria Park to take on the Bannockburn Tigers.

THE BLUE'S BISTRO:

This week featuring:

Chicken Schnitzel / Parmi

Porcupine Meatballs

Flathead Tails – all served with either salad and chips or vegetables.

Chicken Nuggets and Chips, Fish and Chips for the Junior Blues

GO BLUES!!





WINCHELSEA FACEBOOK



Community, Sports, Churches and Non-profits

What's on in Winchelsea	facebook.com/WhatsoninWinchelsea
Winchelsea FREE	facebook.com/groups/winchelseafree
Winchelsea Community Information	facebook.com/groups/207538644446972
Winchelsea Classifieds 3241	facebook.com/groups/216942861684082
Winchelsea Lost and Found	facebook.com/groups/768187693217518
Winchelsea Op Shop	facebook.com/HospitalAuxiliaryOpShopWinchelsea
Winchelsea Shire Hall	facebook.com/WinchelseaShireHall
Winchelsea Community House	facebook.com/winchelseacommunityhouse
The Green Winchelsea Residents	facebook.com/groups/515322772623126
Growing Winchelsea Inc	facebook.com/growingwinch
Winchelsea Star	facebook.com/TheWinchelseaStar
Winchelsea Movie Club	facebook.com/winchelseamovies
Winchelsea Community Market	facebook.com/100083362387611
Winchelsea Land and River Care Group	facebook.com/envirowinchelsea/
Upper Barwon Landcare Network	facebook.com/UpperBarwonLandcare
Winchelsea & District Historical Society Inc	facebook.com/Winchelseaanddistricthistoricalsociety/
Winchelsea Wildlife Shelter	www.winchelseawildlifeshelter.com/
SCARS - Surf Coast Animal Rescue Service	facebook.com/groups/415211698950674
Winchelsea Gardeners	facebook.com/groups/779878518703025
Winchelsea & District Historical Society	facebook.com/Winchelseaanddistricthistoricalsociety/
Winchelsea Repertory Society Inc	facebook.com/winchrep/
Winchelsea Globe Theatre	facebook.com/Winchelsea-Globe Theatre-164790897641678
Winchelsea Uniting Church	facebook.com/winchelseaunitingchurch
St Thomas' Anglican Church	facebook.com/StThomasWinchelsea
St John the Baptist Catholic Church	facebook.com/pages/Winchelsea-Catholic-Church/101775670163180
Winchelsea Mainly Music	facebook.com/groups/668500343953191/
Winchelsea Health Club	facebook.com/WinchelseaHealthClub
Winchelsea Playgroup (School terms only)	facebook.com/groups/551663435367031
Winchelsea Girl Guides	www.guidesvic.org.au/
Winchelsea/Modewarre Scouts	facebook.com/1stModewarreScouts
Winchelsea Fire Brigade	facebook.com/winchelseafirebrigade/
Winchelsea SES	facebook.com/groups/WinchSES
Country Women's Association - CWA Winchelsea	facebook.com/pg/CWAWinchelsea/
Winchelsea Bowls Club	facebook.com/Winchelsea-Bowls-Club-533783333344345/
Winchelsea Blues Cricket Club	facebook.com/groups/8999049476/
Winchelsea Blues FC	facebook.com/WinchelseaFNC/
WYLD Winchelsea Youth Leisure and Drop in	facebook.com/groups/569737570027065/
Lions Club of Winchelsea	facebook.com/LionsWinchelsea
Winchelsea Probus	facebook.com/893535194971083
Winchelsea Golf Club	facebook.com/winchelseagc/ facebook.com/groups/1324943804676697

MGT BUILDING & CONSTRUCTION

NEW HOMES | EXTENSIONS | RENOVATIONS

Ph: 0409 433 687



Moriac Veterinary Clinic

0447 781 089

PHONE 24 HOURS

784 Hendy Main Road Moriac

info@moriacvet.com

www.moriacvetclinic.com.au

HOURS // Monday - Friday: 8am - 5pm

HESSE
RURAL
HEALTH



Acute Care+
Urgent Care+
Residential Aged Care+
Community Nursing
Dietetics
Physiotherapy
Occupational Therapy

Diabetes Education
Social Support Groups
Counselling
Home Care
Health Promotion
* services from Winchelsea only

www.hesseruralhealth.com.au

P: (03) 5267 1200 E: reception@hesse.vic.gov.au



Dr Kale Mazurek

OSTEOPATH

www.kalemazurek.com

0417 114 617 • @drkalemazurek



↳ Injuries
↳ Chronic pain
↳ Headaches & migraines

NOW OPEN AT THE EXCHANGE
32-34 Main Street, Winchelsea

Thursdays 2:00 pm - 8:00 pm

Saturdays 8:00 am - 12:30 pm



Family Healthcare - Naturally through Chiropractic

Get out of pain and back to life.
Build a foundation for lifelong wellness.
Perform at your absolute best.

f www.onebodychiropractic.com.au

03 52672240 Shop 4/21 Hesse St Winchelsea

Here for your Vitality...



Wightons Lawyers

Dispute Resolution & Litigation

Debt Collection

Property Law

Wills & Estates

Powers of Attorney

Business Law

Family Law

By appointment only

22 Willis Street, Winchelsea

ph. 5221 8777

www.wightons.com.au

SIMCO
PLUMBING SERVICE

Domestic - Commercial - Rural

0400 643 976

- All general Plumbing and Gasfitting • Water tanks and Pumps
- Renovations and Extensions • Hot water and Heat pump
- Split system and Wood heaters • Roof and Gutter
- Septic and Treatment plants • Excavation, Bobcat and Tipper
- Driveways and Earthworks
- Blocked drains and CCTV Inspection

Simon McGillivray

Lic: 109610 Free Quotes, Fast & Friendly Service



- Domestic and Commercial hire equipment • Industrial welding gas
- Digging and Earthmoving equipment • New trailers and trailer repairs
- Firewood • Stockists of Royal Oil Lubricants products
- LPG for domestic and commercial requirements

Give Chris and the Team a call on **5232 1177** or email info@colachire.com.au

www.colachire.com.au

101 Wallace St Colac 3250

COLAC HIRE



Caring for families since 1883

Every detail matters...

Tuckers
Funeral & Bereavement Service
... for a life worth celebrating

AFDA Member
PH: 5221 4788
www.tuckers.com.au

Winchelsea AUTO SERVICES
One Stop auto Shop

- ❑ LOG BOOK SERVICE
- ❑ AUTO ELECTRICAL
- ❑ TOWING
- ❑ AIR CONDITIONING
- ❑ CLUTCH & BRAKES
- ❑ TYRES
- ❑ WHEEL ALIGNMENT
- ❑ BATTERIES

CAR, TRUCK REPAIRS & Roadworthys

PH: 5267 3001

Mob: 0417 137 457

17 Alsop Drive

For all your livestock, rural real estate and property management needs, speak to the Charles Stewart team

Livestock

Peter McConachy 0408 522 878
Jamie McConachy 0418 522 879
Matthew Nelson 0428 315 400
Gerard Bohan 0400 005 541
Dougal McIntyre 0439 575 612

Real Estate

Michael Stewart 0418 520 467
Peter McConachy 0408 522 878
Andrew Rice 0457 105 500
Josh Lamanna 0417 586 032
Daryl Osborne 0419 388 341
Anthony McDonald 0418 593 597

Property Management - 5231 5011

Sarah Higgs Nathan Gray Daniella De Rooy



15 Murrell Street, Winchelsea 5231 5400



eldersrealestate.com.au

Elders

You're in Safe Hands With Peter Lindeman

Delivering Exceptional Results for Over 20 Years

If you're thinking of selling a Rural or Lifestyle acreage property on the Bellarine, the Greater Geelong region or beyond then think Peter Lindeman.

Peter spent 20 years managing farms before jumping the fence to sell them; and over the last 23 years he's helped over 350 vendors achieve extraordinary results, more often than not surpassing their expectations. Why not let Peter show you how he can help you achieve an outstanding result for your property.

Peter Lindeman - 0418 525 609

RURAL AND LIFESTYLE SALES MANAGER - ELDERS GEELONG

E: peter.lindeman@elders.com.au



SKINCARE - HAIR CARE - MAKE UP

Organic skincare Essentials

Wild Nature skin care, make-up, and hair care are all certified organic. This means there are no toxic nasties or chemicals. As well as being non-toxic, they are also Australian-based. I am promoting their products because today too many people are putting harsh chemicals on their skin. I love their products and have received so many compliments on my skin ever since using their products for personal use. Their products are full of anti-inflammatory and skin-nourishing ingredients. Because of this, it is gentler on the skin and reduces the risk of irritation. They sell foundation (base make-up), eye shadows, concealer, and lip products—plus a whole skincare range and hair care, including shampoo and conditioner!



If you're interested in organic skin care, hair care, or makeup, please reach out! I am yet to make these products available in stores for public purchase.

Currently, I have a variety of items at home ready to sell. I will be hosting several parties this year to promote Wild Natures products, and I would be thrilled if the public showed interest. Winch locals are encouraged to come along. Please contact me @ellenrebekah3@gmail.com or 0466600524.





The Climate Report

Judy Cameron

The Importance Of Our Oceans

(from *IMAGINE* newsletter by *The Conversation UK*)

"There's an invisible conveyor belt of seawater which moves warm water from the equator to the poles, where it's cooled and becomes more dense and so sinks, returning back to the equator at depth," explains University of Plymouth oceanographer Phil Hosegood.

"During this journey, the heat absorbed at the ocean's surface is moved to the abyss, helping redistribute the ocean's heat burden, accumulated from an atmosphere that's rapidly warming due to our greenhouse gas emissions."

A staggering 90% of all the excess heat generated by burning fossil fuels has been absorbed by the ocean this way. However, we are at risk of losing this critical buffer to rising global temperatures, Hosegood warns.

To understand how, think of the way oil and water form two layers and fail to mix because one is denser than the other. Something similar is happening in the ocean, where the fast-warming surface layer has increased the difference in density between deeper water and restricted the mixing Hosegood describes.

The ocean is the main reason we have not felt the full consequences of our interference with the atmosphere. But this enormous brake on global heating is actually severely degraded – it has declined as fish and other wildlife have declined.

Bieito Fernandez Castro, a lecturer in physical oceanography at the University of Southampton, explains; "Why would oceanographers ever care about anchovies" he asks. "We do, because these small fish can help mix different layers of the ocean when they mate." Fernandez Castro and his colleagues discovered that anchovies provide as much energy as a major storm when they gather and swim together during mating season. All that movement aids the ocean's heat and carbon storage by churning up the sea and allowing the different water layers to mix.

This is just a glimpse of how the ocean, if allowed to rewild, could do much more for us says professor of marine conservation Callum Roberts of Exeter University. Roberts says that industrial fishing contributes to climate change in two significant ways. One, by depleting the marine wildlife that stir up the sea and hasten its carbon sequestration. And two, by disturbing the seabed, where organic carbon has accumulated over millennia.

Hope

"If we save the sea, we save our world" says British broadcaster Sir David Attenborough in a trailer for his new film, *Ocean*.

During a career spanning eight decades, Attenborough and his team have entranced television audiences with scenes of the natural world. In a film-length documentary he has a new message. The ocean, which comprises 99% of the habitable space by volume on our planet, has been drained of life

by destructive fishing methods, he says. But relieved from this pressure, it can bounce back to a state of abundance greater than anything anyone alive today has experienced.

If he's right, humanity has an extraordinary opportunity to grasp in its confrontation with the climate crisis.

Warm Oceans Dominate Australia's Winter Outlook

Information supplied by Weatherzone based on data provided by the Bureau of Meteorology (BOM)

In the absence of any climate drivers in the Pacific and Indian Oceans, Australia's weather will be more strongly influenced by the Southern Annular Mode (SAM) and local sea surface temperatures in the coming months.

Higher than normal mean sea level pressure to the south of Australia could continue to cause drier-than-average weather across already parched areas of southern Australia this winter. By contrast, abnormally warm seas could promote above average rainfall in parts of eastern and western Australia.

Warm temperatures have also been maintained over the southeast of the country. Adelaide, Melbourne, Canberra and Sydney are each running around 3°C above the long term average maximum temperature for April.

Higher than average pressure over Australia's southeast is expected to persist through May and the start of winter, signalling a continuation of this positive SAM tendency.

This could prolong the rainfall deficiencies plaguing southern Australia during what is usually the wettest months of the year – a bad sign for water supply and the agriculture sector.

Helping Families With Free Glasses For Kids

The Victorian Government is helping families with the cost of living and schooling by rolling out free vision screening and glasses to even more students across the state, saving families up to \$600.

The program provides free vision screening and, if needed, further testing and free glasses to participating Prep to Year 3 students. Families can save between \$100 and \$600 depending on the type of vision issue.

The Government's \$6.8 million expansion of the Glasses for Kids program has tripled its capacity. It's now available to 770 eligible schools and 74,000 more Prep to Year 3 students through to 2027.

State Schools' Relief manages and delivers the program and helps to remove vision impairment as a barrier to learning. More than 8,600 students have received free glasses through the program since 2015, following more than 48,000 screenings.



Community Art And Messages To Shine As Part Of Idahobit Celebrations

People can use art or written words to express their support for the international day against LGBTQIA+ discrimination, IDAHOBIT (International Day against Homophobia, Biphobia, Intersexism and Transphobia), as part of a Surf Coast Shire Council rainbow tree project.

As part of Council's adopted awareness raising events calendar, community members are being invited to decorate paper leaves which will be used to create tree artworks for display at key locations across the shire, providing tangible and inspiring shows of allyship.

The trees will be unveiled as part of a community event on 15 May which will include raising of the rainbow pride flag outside Council's Torquay office.

IDAHOBIT, 17 May, marks the anniversary of World Health Organisation removal of homosexuality from its classification of diseases, and now stands against LGBTQIA+ discrimination and celebrates advancement of LGBTQIA+ equality.

The rainbow tree project is underway with distribution of paper leaves to community organisations including community houses. People can also register to participate via surfcoast.vic.gov.au/IDAHOBIT

Council flies the rainbow flag in accordance with its flag policy and events calendar for the entire month of May in recognition of IDAHOBIT.

Mayor Mike Bodsworth will complete a ceremonial raising of the flag on 15 May in advance recognition of the day.

Raising of the rainbow pride flag will be at 10am outside Council's Torquay office, 1 Merrijig Drive, on 15 May, followed by unveiling and display of the rainbow trees and morning tea in Council's chambers.



Located at 36 Main Street, Winchelsea 3241

For any enquires or bookings please contact the clinic on 5292 8028.

Or visit our website: www.winchmc.com.au

Opening Hours:

Monday - Friday 8:00am - 5:00pm

(Monday Evening Clinics available and selected Saturdays)



Our clinic accepts online bookings via the app called HotDoc. Download the app on the App Store or Google Play or head to our website.

Truth Telling Event

Footprints: The Lucy and Percy Story

29 May 5.30-7pm

**Special Guest Speaker Wemba
Wemba man *Simon Flagg*
Wathaurong CEO**

Surf Coast Shire Council Chambers
1 Merrijig Drv, Torquay



NATIONAL RECONCILIATION WEEK 2025

**Bridging Now
to Next**





R & K Creative Framing
for all your framing needs

52672192
free quotes
pension discount
specialist in Age & Disability Modifications

Ray & Kim Jansen
10 Witcombe st
Winchelsea 3241
0414672192

Ray The Home Maintenance HANDYMAN
abn 47926823482

Green Lead Electrical
Connecting you to a greener future
REC 23018

0467 097 101

Servicing Geelong & the Surf Coast
Specialising in all residential electrical work including:

- Switch board & lighting upgrades
- Outdoor lighting
- Electrical safety checks
- Energy efficient LED lighting
- Ceiling sweep fans & ventilation
- Energy saving advice

Phone Martin Wilkinson:
0467 097 101
greenlead@outlook.com

1132268-CG18-14

R.A.K. DAVIS & SONS

CARTAGE CONTRACTORS

WINCHELSEA

SUPPLIER OF ALL QUARRY MATERIALS, TRUCK HIRE
CARTAGE OF GRAIN, LIME, GYPSUM & SUPER
LANDSCAPE & GARDEN SUPPLIES

56 WILLIS ST, WINCHELSEA
Ph – 5267 2094
Ryan – 0438 672 281
email: rakdavissons@gmail.com

STORAGE KING

SIMPLE STORAGE SOLUTIONS

- Personal & Business Storage
- Boat, Caravan & Vehicle Storage
- High Security Premises
- Individually Alarmed Units
- Electric Gate Access
- 7 Day Access & CCTV

YOUR STORAGE PROBLEMS SOLVED

5267 3116
6 ALSOP DRIVE, WINCHELSEA 3241

TREE WORKS & STUMP GRINDING

Fully insured and qualified climbing arborists.
Slashing and fire preparation.

FREE QUOTES
0488 553 650
Mathieu Vaupres

www.colactrees.com.au

GREAT Bundle Deal on Bosch Hot Water... FROM ELGAS

Buy any Bosch Bluetooth continuous flow hot water model - 16Litre, 20Litre or 26Litre and **Receive \$100* in Elgas bonus LPG gas credits**

*For more details: www.elgas.com.au/appliances/bosch-optiflow-16-20-26-lpg-bundle-sale

AND... for new customers, an additional \$80 WORTH OF LPG GAS CREDITS when you open a new LPG Gas account with Elgas**

**Further details can be viewed at www.elgas.com.au

Ask about the Elgas Easy Payment Plan - 12 months interest free*** on selected LPG appliances
***Further details can be viewed at: www.elgas.com.au/epp

Automatic tankler gas bottle refill OR gas bottle exchange
refill is available for home or business....
Call today or visit our website for our many customer benefits and latest offers

131 161
www.elgas.com.au

ELGAS

©2019 ELGAS LTD



parkrun 62



Saturday 10 May 2025

Trebeck Reserve, Winchelsea



26 parkrunners enjoyed the course through Trebeck Reserve this week.

We had visitors from Altona Beach.

Six people completed their personal best time for Trebeck Reserve parkrun. Congratulations to Garth Doeling, Amanda Worland, Lee Webber, Chris Hurren, Don Smith and Kirsty Logan.

This event was made possible by the following volunteers: David Woodall, Kate McInnes, Neil McInnes, Ann Jones, Ann Morsby, Kris Czerkiewicz, Murray Bennett.

It takes a minimum of six people each week to safely conduct an enjoyable event. Please email trebeckreserve@parkrun.com if you are able to volunteer

some of your time. Tasks are simple, sociable, fun and very much appreciated.

We are currently seeking people interested in sharing the role of Run Director each 4-6 weeks or so. It involves coordinating volunteers, setting up for the event and making sure things run smoothly. The role is easy to learn and there is plenty of support.

Further details of this week's results can be found at trebeckreserveparkrun.com.au/results or check out our Facebook page for more photos and further information.

If you wish to join us any Saturday morning as a walker, runner or volunteer please complete the simple online

registration at parkrun.com.au/register, this is free, only needs to be done once and can be used at any of the 5,000 plus parkrun events worldwide.

You do not need to be a runner, wear fancy Lycra or the latest high-tech shoes. Around one third of participants walk the course.

parkrun was conducted at around 500 locations across Australia this week. Well behaved dogs on a short hand held leash are welcome (no waist harnesses please).





Water Supply
Specialists

WATER SOLUTIONS

74 Dennis Street, Colac
5231 1861



ALL THINGS WATER:

- PUMPS • PIPES
- FITTINGS • TANKS
- POOL CHEMICALS
- IRRIGATION
- WATER PURIFICATION
- SOLAR • REPAIR

Winchelsea Star

ISSN 2202-6851



9 772202 685002



SPECIALISING IN QUALITY



REGISTERED
Building Practitioner

- NEW HOMES
- ALTERATIONS
- CARPORTS
- BATHROOMS
- EXTENSIONS
- DECKS
- VERANDAHs
- WINDOW REPLACEMENTS
- RENOVATIONS
- PERGOLAS
- RE-GLADS

Leigh Lupton
0438 840 104

LEIGHLUPTON17@GMAIL.COM

Est. 1977



*New Homes, Renovations, Extensions,
Bathrooms, Decks & Pergolas*

0408 583 362

stephen@alfordbuilt.com.au



REGISTERED
Building Practitioner



Call Matt - 0418 319 357

mbwoodplumbing.au

Servicing Winchelsea
& surrounds

- General maintenance & blocked drains
- Gas fitting & hot water service upgrades
- New homes & renovations

DEFIBRILLATORS IN WINCHELSEA

Accessible to the public
24 hours a day



The Winchelsea Lions Club has compiled a list of public access defibrillators in Winchelsea. If anyone knows any others with 24 hour public access, please let Linda Carter know 0439 817 263.

Ambulance Victoria
33 Willis Street

Bendigo Bank
11 Main Street

Globe Theatre (Side entrance)
17 Willis Street

Hesse Rural Health
8 Gosney Street

Men's Shed
51 Hesse Street

Netball Courts
Eastern Reserve Hopkins St

Senior Citizens Club
36 Harding Street

Uniting Church
33 Hesse Street

Winchelsea Bowls Club
Hesse St,

Winchelsea Cemetery
McConachy St

Winchelsea Golf Club
13 Anderson Street

Winchelsea Primary School
Main Street

Wurdale Memorial Hall
220 Wurdale Road

