

Winchelsea Star

Price \$1



Your Weekly Community Newspaper

Since 1977

Vol 45 Ed 40

Tuesday 11 October 2022



Winchelsea Artists Spring Exhibition



Winchelsea Community Market

What a turnout again even though it was a late start for some due to daylight saving.

31 stalls showing their products and produce. A great selection of food in the food court (which is growing with each market).

We do have some talented people in and around Winchelsea.

A newcomer to our market is Caz Bare Bears by Carole Blake. Carole's passion for the restoration of bare bears shines out in her display.

For all your bear needs contact carol. blake@bigpond.com or 0416 029 873

Remaining market dates for 2022 are Nov. 6. & Dec 4 keep these dates.

Lesley Christie
Growing Winchelsea Inc.

Winchelsea Men's Shed



For The Community

51 Hesse Street

Every Wednesday from 9:30am

New members always welcome

For more detail contact:
Ray Atkinson (Co-ordinator)
0407 839 139

or
winchmensed@gmail.com

Need a job done?
Woodworking jobs,
furniture repairs, small jobs.
Drop in and talk to us.



Farmers, lease your land for passive income

Lease your land for a solar farm and receive an additional passive income for 30 years and up to \$50,000 upon construction, all the while diversifying your income and increasing revenue

Call Jesse: (03) 4713 5709
jesse@bnrgleeson.com.au



We take care of everything for you

Do you know a Local Legend?




Nominations open 12 September for our Local Legends recognition program 2022-23.

The program recognises Surf Coast Shire residents who have made a positive contribution to our community.

It could be an individual or group:

- Helping others and strengthening our community
- Caring for our environment
- Improving inclusion and celebrating diversity
- Promoting healthy eating and active living

We feature Local Legends in digital channels and local media showcasing the great work they do.

Recognising someone is really easy and nominations close on **Monday 31 October.**

For more information and to nominate a local legend, visit surfcoast.vic.gov.au/LocalLegends





Winchelsea Artists Spring Exhibition

Winchelsea Riverlee Artists are holding their Spring Exhibition on Saturday and Sunday 29 and 30th October at the Globe Theatre, 17 Willis Street, Winchelsea, 10am - 4pm daily.

Ten artists are exhibiting their current work featuring local scenery, landscapes, contemporary and abstract artworks for you to choose from.

The Winchibalds, portraits of local identities will feature again this year. The portraits generated enormous interest at the inaugural exhibition in 2019.

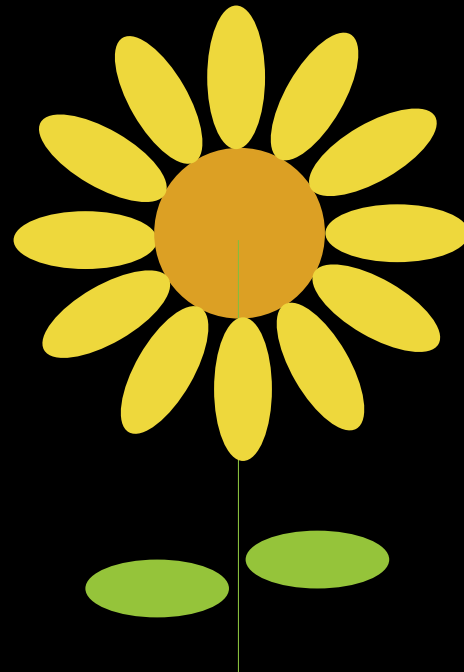
All artists exhibiting will be in attendance and look forward to meeting you, our patrons. A door prize, a painting by Jill Treloar will be going home with a lucky attendee.

Devonshire tea will also be available, so grab some friends and have an enjoyable outing to the Riverlee Exhibition.

All are welcome to the official opening on Friday 28 October, 7-9 pm.



Riverlee Artists SPRING EXHIBITION Including the Winchibalds 28 - 30 October



Official Opening Friday 28 October 7 - 9 pm
Globe Theatre, 17 Willis Street, Winchelsea
Saturday 29 and Sunday 30 October 2022
Open 10 am - 4 pm
Devonshire tea available



Breeze Health and Wellness, Exercise Physiology **32-34 Main Street, Winchelsea (old post office)**

Chronic disease? Injured? Wanting improved athletic performance?
We can help you manage, rehabilitate and prevent many common ailments through movement.

Speak with your GP about a referral for a care plan.

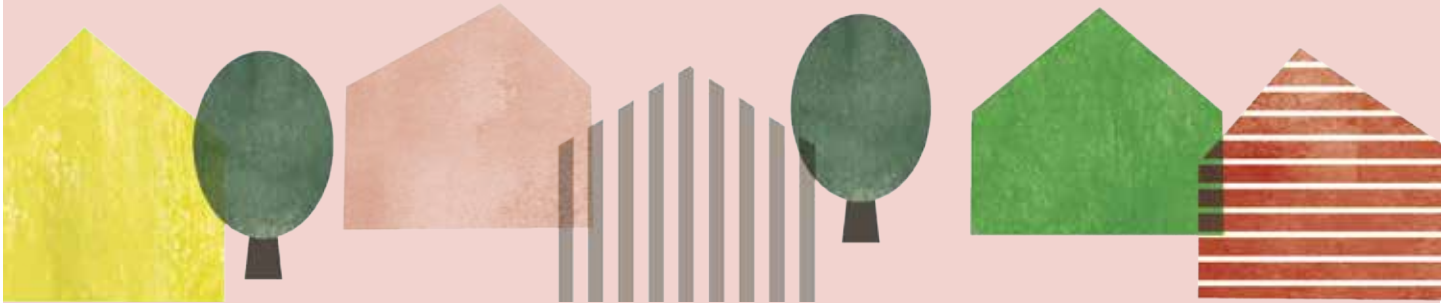
Private health accepted - no referral needed.

Call Brenton on 0428 790 023 to discuss or email breezehealthandwellness@gmail.com

Exercise is Medicine, Motion is Lotion. Move with Ease at Breeze.



Help seek solution to housing crisis



Surf Coast Shire Council is calling on members of the community to contribute their input to explore increasing social and affordable housing on a Council-owned site at 2 Fraser Drive, Aireys Inlet. The site has housed residents in four affordable housing dwellings since the early 1990s, however there is potential to help ease a shire-wide accommodation shortage by further developing the site.

We are inviting you to find out more about the proposed affordable housing development and welcome your insights to help form a shared community vision for the site.

Drop In Sessions

Sunday 9 October: Aireys Inlet Market, 9am-1pm

Friday 14 October: Aireys Inlet Hall, 3-5pm

Saturday 22 October: Aireys Inlet Hall, 11-1pm

You can have your say online, visit:

surfcoast.vic.gov.au/housing



For more information email info@surfcoast.vic.gov.au phone 5261 0600




FARMERS ARMS HOTEL BEEAC

Quality...Service...Fair Prices...All Three All The Time



MELBOURNE CUP

Tuesday 1 November

- Prizes for Best Dressed & Best Hat
- Champagne Breakfast
- Lucky Door Prizes
- Cocktails



Book Now

farmersarmsbeeac

*Bookings Essential

87 Main Street Beeac **5234 6341**
www.farmersarmsbeeac.com.au

LTC On The Mend

words & photo by Tony Phelps

The long-suffering Winchelsea Leisure Time Centre (LTC) ie. indoor sports hall is looking like things are finally on the move.

A wide and presumably deep concrete skirt has been added around the entire building to combat the continuing damp problem that has been affecting the wooden floor inside. Extensive drainage looks to have been built into the concrete.

Let's hope this much-needed community asset is once again open and available for indoor sports and recreation activities soon. As we gradually pull away from the pandemic and restart in-person gatherings, there will be a host of ideas to make use of a hard-floor indoor space.

The annual flower show has sadly been discontinued, but is a great example of a community event that needs the room and protection of a sports hall. Obviously sporting and fitness activities such as basketball, roller disco (!) and/or zumba could start up again.

If such things are up to you to organise (or you would like to), keep an eye on developments at the LTC. It was supposed to have been reopened by now, but as with so many things Covid has caused a few delays and slowdowns. Winchelsea residents will need to make the most of it once it's back, to prove it was worth all the effort and trouble.



Winchelsea Taxis is now Surfcoast Taxis

Our fleet of vehicles are growing to all late models and we are covering an extended area including Winchelsea, Colac, Bannockburn, Inverleigh, Great Ocean Road and Geelong.

We have a fleet of 10 seater Maxi Vans, all with capacity to carry wheelchairs.

Surfcoast Taxis Pty Ltd
All Bookings: 0408 325 992
Fax: 5267 2699
Email: bannotaxis@gmail.com
 (Admin or Stan 0429 672 888)
 66A Batson Street
 Winchelsea 3241



Accounts NDIS provider. TAC, DVA etc

NDIS provider number 4050001044
 NDIS provider number 4050001048



Book your next ride with **smarHAIL**

Book Track Pay Rate

Download on the App Store GET IT ON Google Play



Detox your home

FREE DROP-OFF

for household chemicals

Saturday 29 October,

9am - 12pm

130 Messmate Road, Torquay

Registrations essential:
surfcoast.vic.gov.au/detox





sustainability.vic.gov.au/detoxyourhome



Become one of 4000 new teachers with a career that changes lives.

Are you ready?



Visit vic.gov.au/teachthefuture

Want to join a Winchelsea Choir?

Have you ever thought you'd like to sing Running Up The Hill? With others?

Well here's an opportunity.

The Winchelsea Shire Hall is a well known building right in the middle of town. There are many opinions as to what should be done with it, you will have read many comments over recent months. I have been working as the community developer with Winchelsea Community House since the beginning of the year and I have met many people who have suggestions and comments about the building and what should be happening there.

When I first entered the building I was struck by the urge to sing. Now, I'm definitely not a singer, although I do love

to belt out a tune in the car, on my own. Apparently the building has the best acoustics within 100 kilometers and I have been told that Thursday morning melodies was a much loved feature when the tea rooms operated.

A Winchelsea choir? A chance to join in voice with others to create some music? Would you be interested? If you are, all you need to do is come along on Sunday 16th October at 3.00pm. We have a wonderful leader, Kai Whyte, who will help us gather our voices and maybe some magic will happen.

Not only will we sing, we will determine what we might like to do in this space

with our voices. I remember the 'Pub Choir' movement and marvelled at how much community spirit was in one room. I can see this happening in the Shire Hall.

I am putting this out as an idea, please do as you will with this knowledge. And, if you have an idea that you'd like to explore I am here to help you,

Email me your comments to shirehall@winchhouse.org.au or, come along at 3.00pm on Sunday 16th October. I'd love to meet you.

Jill Evans
Community Developer
Winchelsea Community House

What's happening at Playgroup?

This week at playgroup; it was all about the springtime! We planted our own sunflower seeds in little pots with soil, we had rainbow rice with scoops & containers to play.

The rainbow rice was super popular, it's really simple way to allow children to explore learning through their senses.

We shared a beautiful fruit platter for morning tea with the flowers collected by the children on their way to playgroup today.

We had a bridge and a little ducks play experience, also some new faces which was absolutely fantastic to see!

We also had spring stories, and Flowery colouring in sheets too! The children thoroughly enjoyed the new dolls house and transport area as well.

The children enjoyed outdoor play also

on the pirate ship and splashing in the puddles that they could find.

RECIPE FOR RAINBOW RICE:

What you'll need?

- 6 ziplock bags
- 6 cups of uncooked white rice
- 6 food colours
- White vinegar

What now?

Place one cup of uncooked rice in each of the Zip lock bags.

Add a few drops to each bag (different colour for every bag) and then add 1/2 teaspoon of vinegar to all of the bags.

Zip the bags tight and mix until all of the rice has changed colour.

Open the bags, let dry overnight & it's ready for play :-)

** Store in sealed bag or container when not in use **

Sincerely, Danni O'Connell



Free Community Service Advertisements

Services and Activities in Winchelsea



TRAIN SERVICES

To Geelong

Mon - Fri

6:41 am, 7:59am, 11:34am,
2:01pm, 7:37pm

Sat and Sun

9:35am, 1:36pm, 7:18pm

To Warrnambool:

Mon - Fri

9:29am, 2:56pm, (to Colac
5:27pm), 6:45pm, 8:53pm

Sat and Sun

8:47am, 2:49pm, 8:37pm

Country Women's Association



7pm Second Wednesday of Month
Winchelsea Senior Citizens' Hall

Bus to the Hub

For reservations on the weekly bus
to the Eastern Reserve Hub,
please phone 52671202.

Surf Coast Mobile Library

Surf Coast Mobile Library
parked in Hesse Street
(outside Shire Hall) on Fridays
between 2:00 and 5:00pm
unless it is a Public Holiday.
Hesse St, Fridays, 2pm-5pm

Winchelsea Taxi

0429 672 888 or 5267 2888

Wheelchair accessible
10 seater bus available.

Winchelsea SES

Meeting and training
2nd Wednesday

Training 4th Wednesday

Visitors and inquiries welcome

0408 102 802

Op Shop

Open Friday, Saturday, Sunday, Monday

10 am to 3pm

All proceeds to Hesse Hospital.

Winchelsea and District



Combined Probus Club

Meets 1st Monday of the

month at 10am. Senior

Citizens Rooms, Harding St, Winchelsea.

New members always welcome.

Enquiries Linda 0439 817 263.

Body Therapy Classes

Yoga, Pilates, Qi Gung and Mindfulness Meditation Practices

Tuesdays 6.15pm \$13 Cash
Catholic Church Hall -School Term Only

Dr Haidee Benning, 0428 177 964

Winchelsea Playgroup

Every second Thursday 10am-12pm
St Thomas Anglican Church Hall
cnr Barwon Tce and Hopkins St, Winchelsea
Contact: Melissa 0456181268
Facebook - Winchelsea Playgroup 2019

New families welcome

Winchelsea Girl Guides

Our Unit meets at the Catholic Church
Hall, Harding St Winchelsea

each Monday 4.30pm-6pm

All girls 5yrs- 15yrs Welcome!

Contact Yvonne Orchard 0448 672 630

or Bonnie Stokes 0401 386 274

1st Modewarre and Winchelsea Scout Group

Joey's: Tuesdays of school term 5-6pm

Cubs: Mondays of school term 6:30-8pm

Scouts: Tuesdays of school term
6:30-8:30pm

All at Modewarre Hall, Cape Otway Rd

Venturers: Wed at Walton's Rd Venturer
Den

Contact Marie McPadden 0409 330147

Winchelsea Transfer Station

Opening Hours

Monday	Closed
Tuesday	2pm-4pm
Wednesday	Closed
Thursday	2pm - 4pm
Friday	Closed
Saturday	1.30pm - 3.30pm
Sunday	9.30am - 12.30pm

55 Cressy Road, Winchelsea.

Accepts household garbage,
mixed commercial and industrial waste,
mixed construction and demolition waste.

Accepts recyclable materials.
Accepts one recycle bin two waste bins.
Does NOT accept clean fill.

Council calls on community to help seek solution to housing crisis

Surf Coast Shire Council is calling on members of the community to contribute their input and insights into a project that aims to explore increasing affordable housing on a Council-owned site in Aireys Inlet.

Located at 2 Fraser Drive, the site has housed residents in four affordable housing dwellings since the early 1990s. There is also a 1,100m2 community garden and a public access walkway to Albert Avenue, both of which will remain in Council's ownership and are not part of this project development.

Council is willing to consider proposals from registered housing agencies to forgo the value of the land to develop social and affordable housing and transfer the management of existing four social housing dwellings.

Any proposals for a land use arrangement would be subject to a decision-making process at a future Council meeting.

Surf Coast Shire Council Mayor Libby Stapleton said community engagement was an important step towards establishing

a community endorsed vision for social and affordable housing at the 2 Fraser Drive site.

"At a time when private rental vacancy rates are below 1 per cent and 783 people are on the waiting list for social housing in the Anglesea district alone - job vacancy rates in the Great South Coast area have also ballooned," Cr Stapleton said.

"For some of us – even those of us deeply embedded in our communities and townships - it doesn't take much to become extremely vulnerable. Creating social and affordable housing is about making sure that when we are confronted with a health crisis, relationship breakdown or job loss, we all have access to safe, secure and affordable housing."

The proposed project responds to community requests for affordable housing for local people across the Surf Coast Shire, with a range of groups identified as having increased housing need.

"We've heard from key workers, families, women and older residents struggling to stay in towns across the shire due to a lack of affordable housing," Cr Stapleton said.

A close working relationship between Council and stakeholders provides the potential to ensure that any further affordable housing is built according to ecologically sustainable design principles, and well integrated into the local and natural environment.

There will be a series of opportunities to discuss the potential for the site, starting 9 October at Aireys Inlet Market, as well as on 14 and 22 October at Aireys Inlet Hall.

Drop In Sessions

Sunday October 9
Aireys Inlet Market
9am-1pm

Friday October 14
Aireys Inlet Hall
3-5pm

Saturday October 22
Aireys Inlet Hall
11-1pm

Have your say here www.surfcoast.vic.gov.au/housing

For more information call Surf Coast Shire Council on 5261 0600

Women's Workshop

Any ladies out there who are interested in learning some workshop and home maintenance skills?

The Winch Mens' Shed are running free workshops starting in August. Let us know what you would like to learn and what days and times are most suitable. We can tailor the workshop to cover what is most requested and on days that suit most.

If you are interested in attending please contact the Men's Shed on 0407839139 (Ray) or email winchmenshed@gmail.com

Op Shop opening hours

Friday, Saturday, Sunday, Monday

10 am to 3pm

All proceeds to Hesse Hospital.

FREE

One comfy chair and/or a two-seater leather couch.

Call John or Deni 5288 7319. Delivery could be arranged.





Christ Church Birregurra presents...

A talk on

Georgette Heyer by Dr Jennifer Kloester

*Proceeds go to the Andrew Love Cancer Centre, Geelong
and Christ Church Birregurra*

If you've never read bestselling historical novelist **Georgette Heyer**, or if you've read and loved her books to bits, or if you're just a fan of *Bridgerton*, then you're sure to find this marvellous talk of interest.

Why are her novels still so popular? And what is it about the Regency era that keeps people coming back for more?

Join us to find out with Heyer expert, **Jennifer Kloester**. Jennifer is the bestselling author of **Georgette Heyer's Regency World** and **Georgette Heyer: Biography of a Bestseller**.

Saturday November 12

1 Sladen St Birregurra

2.30pm

followed by afternoon tea

Tickets \$25 ea

www.trybooking.com/CCTKP

*"One of my
guiltiest pleasures"
Stephen Fry*



Cash ticket sales and enquiries *please call Barb 5236 2655*

Positive Ageing Month

Moriac and District History Group kicked off Positive Ageing Month celebrations across the Surf Coast Shire, with its Sunday History Session in Moriac.

About 30 people attended the 2 October event, which marked the start of a jam-packed calendar for Positive Ageing Month – an annual celebration of people aged 55 and over. The fun continues throughout October, with other

Winchelsea events such as a Mad Hatter's Morning Tea Party (12 October) and Winchelsea Tech Café sharing iPad and iPhone tips and tricks (20 October).

Surf Coast Shire Councillor Gary Allen said Positive Ageing Month was a fantastic opportunity to celebrate older people living and visiting the region, while also keeping the Council's commitment to ensure residents can age well in the place where they live.

"Every year, the month of October is a chance to really show our appreciation

for our older community members and let them know how much they matter," Cr Allen said. "They contribute so much to our society every day with their life experience, skills and knowledge. This festival is one of the ways we can highlight how much we value older members of our community and demonstrate our commitment to positive ageing across the shire."

For the full list of events, visit surfcoast.vic.gov.au/positiveageingmonth.

VFF Symposium to showcase Victoria's farming future

The Victorian Farmers Federation (VFF) is excited to announce the 2022 VFF Symposium which features an impressive line-up of presenters and promises to showcase the future of the Victorian agriculture industry.

VFF President Emma Germano said the inaugural event will be an unmissable opportunity to hear from industry thought leaders and meet hundreds of Victorian farmers.

"It promises to be a unique gathering to learn and hear from industry leaders and farmers from across Victoria on not only the biggest issues facing our industry, but also what lies ahead for farmers and some of the exciting innovations on the horizon."

"From supply-chain delays, food security concerns, biosecurity, climate change and what's ahead in agriculture technology, there's something for everyone, no matter what you farm," Ms Germano said.

The event will be hosted by broadcasters Gorgi Coghlan and

Tommy Little and will feature the below, amongst a host of other speakers:

- Jane Bunn (7News Melbourne weather presenter and meteorologist)
- John Blackburn AO (Former Deputy Chief of the Royal Australian Air Force and Chair of the Institute of Integrated Economic Research Australia)
- Tanya Barden (CEO of the Australian Food and Grocery Council)
- Dr Richard Eckard (Director, Primary Industries Climate Challenges Centre)
- Sam Kekovich (Meat and Livestock Australia's 'Lambassador')
- Jon Young (Industry Executive, Agribusiness, Supply Chain and Retail)
- Rob Clayton (Managing Director, Nutrien Ag Solutions)

- Raign 'Buck' Buckingham (Ethical Swine)

- Katy Brown (Rare Breeds Trust of Australia)

The 2022 VFF Symposium will be held on 13 and 14 October and features a social function (Thursday 13 October) and Symposium plus dinner (Friday 14 October).

Registrations are now open, including limited early-bird offers and will close on 30 September.

"Tickets are selling fast, so don't wait to secure your seat at what promises to be one of Victoria's premier agricultural events," Ms Germano said.

More information, including ticket prices, exclusive partner deals and how to secure your ticket can be viewed on the VFF website: vff.org.au/event/vff-symposium/

Winchelsea Star

Articles are most welcome and must carry the name and address of the sender.

Weekly deadline is 5pm Friday.

Copy for sports results and weekend events is Sunday 6pm (4pm for hard-copy articles/results left at IGA) unless by prior arrangement.

Copy should be emailed to news@winchelseastar.org.au or left at IGA Supermarket.

The Winchelsea Star reserves the right to edit or not publish any article.

Views expressed are not necessarily those of the Winchelsea Star or its Committee.

500 online subscribers, 250 copies printed for outlets around Winchelsea.

Free subscription to digital version at winchelseastar.org.au

© Winchelsea Star Org. Inc.
All rights reserved.

Winchelsea Star Organisation Inc.
Reg. No. A1479, ABN: 57 207 411 958
winchelseastar.org.au

Po Box 5, Winchelsea, Vic, 3241

Editors:

Cerrie Fogan, Yvonne Stevens
Judy Cameron
editor@winchelseastar.org.au

Advertising:

Sasha Gauntlett and Neil McInnes
advertising@winchelseastar.org.au
0408 102 802

Layout/Sub Editors:

Susan Corby, Charles Corby
Stuart Fountain
production@winchelseastar.org.au

Committee

President: Mick O'Mara
president@winchelseastar.org.au

Treasurer: Cathy Cheadle
treasurer@winchelseastar.org.au

Secretary: Tony Phelps
secretary@winchelseastar.org.au

Committee Members:
Linda Carter

Printer: Mud Group
Website: Winch Websites



WINCH WALKERS.

WE would love to see you for a weekly walk.....anyone new to the area or would like to reconnect with our walking group- everyone is welcome.....



Heart Foundation Walking Group

MEET: MUD HUT- Barwon Terrace – opposite La Hoot

WHEN: every Wednesday at 9:30am – 10:30am (approx.)

WHY: Walking is a terrific way to catch up with people and be active!

COST: It's FREE!

Walking routes are tailored to ensure they are accessible to everyone.

The Walking Group follows the Heart Foundation COVID safe guidelines.

For further information please call Vanessa Berry (Health Promotion Officer) on 0436195616 or email vberry@hesse.vic.gov.au Or call by the Mud Hut with your walking shoes on and come down to meet us..... we would love to see you!!

Water Delivery



WAZZA'S
WATER CARTAGE

Stainless Tanker Up to 22,000 ltr loads
Barwon Water Registered

Domestic & Rural Water Supplies

Call Wazza
Mob: 0428 877 260
Email: wazza@wazzas.com.au Web: wazzaswater.com



Kyeema
Rural Fencing Pty. Ltd.

Jason Armstrong & Jay Hawker

1080 Princes Lane, Ombensley, Victoria, 3241
0419 565085 (Jason)
0416 585817 (Jay)
kyeemafam@kyeemafam.com.au
Also incorporating domestic and rural tree trimming services.

Knuckey's Winchelsea Ph: 5267 2011

Knuckey's have in stock a complete range of batteries to suit tractor, heavy machinery, cars, utes

The largest range of the best oil for your vehicles—**CASTROL**—
'when only the best will do'

The largest range of V belts.
A, B, C, D M Sections
Bolts and nuts for all occasions
Steel cut to size

All About

Mowers & Chainsaws

Repairs to all makes and models of ride on mowers, domestic mowers, pumps, chainsaws, brushcutters and small engines.

Trading Hours: Mon - Fri 8am - 5pm Saturday 8am - 12 noon

5267 2266 Cnr Princes Hwy & Lennox St Winchelsea
www.allaboutmowers.com.au
accounts@allaboutmowers.com.au



Gardiner scholar stays connected to south-west Victorian farms

By the time she was 10, Anastasia Rea had seen more of Australia than most people see in their lifetimes, but she still yearned for the dairy farms of south-west Victoria.

Although she didn't grow up on a farm, Anastasia's parents and extended family

all came from dairy farming backgrounds so when it came to choosing a career, dairy was the top priority.

Anastasia, 19, is now pursuing her dream. As a 2022 Niel Black Gardiner Tertiary Scholar, she is six months into her Advanced Diploma of Agribusiness Management at Longerenong Agriculture College.

A 12-month gap year job on her uncle's dairy farm confirmed her passion for the industry, and the scholarship made her study a reality.

It's a long way from travelling the highways of Australia with her parents Richard and Venessa. "My parents bought a bus and renovated it," she said. "We were meant to travel for two years but that turned into seven from when I was three years old.

The family returned to Warrnambool when Anastasia was 10, and later moved to nearby Allansford. Her parents have recently returned to live in Perth.

Anastasia attended Emmanuel College in Warrnambool where she was able to study agriculture, including work experience on a dairy farm.


Although she has no set plans, Anastasia is interested in possible careers in stock agency, nutrition or embryo transfer.

"I definitely want to work in the dairy industry because I like working with cows, but I think I'd be happier to work on a farm rather than own one so I could still have the occasional holiday."

Applications for Gardiner Foundation Tertiary Scholarship are now open. To be eligible, students must start their first year of full-time tertiary study in 2023 and need to relocate from home due to study commitments.

Further information and application forms are available at: www.gardinerfoundation.com.au/ts/

Completed applications must be submitted to scholarships@gardinerfoundation.com.au



Growing Winchelsea-General Meeting
October 12, 2022
7pm
Shire Hall

- Women's Housing Development
- Affordable Housing in Winchelsea
- Zoning in Winchelsea

MC, Growing Winchelsea President, John Tebbutt
 Speakers:
 Lindy Parker: Women's Housing LTD.
 Shaan Briggs: SCS, Manager Integrated Planning
 Aleisher Hooper: SCS, Strategic Initiatives Coordinator
 Chris Pike: Acting CEO, SCS
 Roger Hastrich: Project Manager-Housing in G21: Regional Taskforce
 Mike Tucker: Growing Winchelsea, Planning and Infrastructure, sub committee

You are invited to this forum, as Growing Winchelsea Inc. seeks to assist in informing the local community of the forthcoming Women's Housing Development, Affordable Housing in Winchelsea and Zoning in Winchelsea.

Supper provided

Members and non members alike are welcome and encouraged to participate.
 ***Membership to Growing Winchelsea is FREE.
 By simply sending your email request to join to secretary@growingwinchelsea.com via the Growing Winchelsea website, you will be added to the mailing list.



Café La Hoot

have you tried
 'owl' coffee?

1 willis st cafelahoot@gmail.com 0407 528 999

DownRyte Excavations

- Excavations
- Drilling and Piling
- Rock Placement
- Tree and Stump Removal



Sean Hunwick
 Mobile: 0409 447 288
 Email: downryte@activ8.net.au

R & K Creative Framing
 for all your framing needs

52672192
 free quotes
 pension discount
 specialist in Age &
 Disability Modifications

Ray & Kim Jansen
 10 Witcombe st
 Winchelsea 3241
 0414672192

Ray The Home
 Maintenance HANDYMAN
 abn 47928623462

LIONS CLUB OF WINCHELSEA

PAPER RECYCLING

Paper depot rear of
 Senior Citizens Rooms Harding Street
**NEWSPAPERS, MAGAZINES,
 PHONE BOOKS WANTED**

SHEEP POO FOR SALE

\$5 per bag.
 Available at paper depot rear of
 Senior Citizens Rooms
 Harding Street
 most mornings between 10 and 12
 or contact David on 0410 029 857.



**RAISING FUNDS FOR OUR
 TOWN & DISTRICT**
 5267 2011 or 0408 520 606

DANCE
classes

**MID-YEAR
 ENROLMENTS
 NOW OPEN!**



For more information or to enrol, please visit
www.melsdancecentral.com.au

CLASSES AVAILABLE IN WINCHELSEA

PRE-SCHOOLERS - ADULTS

BEGINNER - ADVANCED LEVELS




mainly music
est. 1990

Fun, Interactive music sessions for
 pre-school children (0-4 y.o.) and
 parents/caregivers

When: Mondays from 10 to 11 am
 (runs during school terms)

Where: St Thomas' Hall
 25 Barwon Tce.

To Enquire ring: **0407838256**

**Plasterer
 & Painter**

Daryl Hecker

Domestic & Commercial
 Renovations & Repairs
 Suspended Ceilings
 Dustless Sanding
 New Homes
 Extensions



Ph 0419 194 799

**WINCHELSEA
 CONCRETING**

• Driveways • Sheds • Decorative Concrete • Raft Slabs


Robert Murphy
 ☎ 0438 235 237
 ✉ winchelseaconcreting@outlook.com

Simco Plumbing and Gasfitting

24/7 Emergency service Ph:0400643976

- All General Plumbing and Gasfitting
- Roof and Gutters, Hot Water service changeover
- Split Systems, Air Conditioning and Wood Heaters
- Irrigation, Septic and Treatment plants
- Excavation, Bobcat and Tipper
- Rain water Tank installation
- Renovations and Extensions
- Gas conversions and servicing

Simon McGillivray
Lic:109610. Free quotes, Fast and friendly service



St Vincent de Paul Society
good works!

Covering Meredith, Bannockburn, Anakie, Lethbridge, Inverleigh, Teesdale, Shelford, Elaine and Winchelsea

52219170

Monday - Friday 9am to 2 pm
<http://www.vinnies.org.au>

A caring Catholic organisation offering "a hand up" to all people in need.



Matthew Partridge
p 0418 672 334
e mrpsteelworx@yahoo.com.au

Welding Service

- Onsite welding
- Farm maintenance
- Farm machinery & equipment repairs
- Cattle & sheep yards
- Custom built trailers
- Supply & install gates

**BUILDING?
RENOVATING?
NEW HOME?
EXTENSION?**

- ◆ **BUSHFIRE ASSESSMENTS**
- ◆ **6-STAR ENERGY RATINGS**

**BRUCE ST. CLAIR
0435 892 799**

CORPORATE MEMBER



Building Designers Association Victoria

OZ TREES NURSERY & TREE PLANTING SERVICES

- Affordable seedlings—over 200 species
- Complete plantation service—farm forestry, shelter, aesthetics
- Deep ripping & mound ploughing. Rotary bed forming
- Our experienced staff will help you select species for your site conditions and needs

Also available—tree planting tools, milk cartons, plastic tree guards & bamboo stakes

569 Warrowie Rd. Colac
P: 5233 6280 F: 5233 6393
E: info@oztrees.com.au
W: www.oztrees.com.au
Open Monday—Friday
9am—4:30pm



Phone OzTrees for professional advice,

WINCHELSEA GAS CONNECTIONS

Are you connected to natural gas?
We organize service pipes & meter connections.
Any appliance you wish connected:

- Gas log fires
- Gas heaters
- Hot water services
- Hot plates
- Ovens
- BBQs

RM & ME Plumbing Pty Ltd
Ross 0417 561 558
Murray 0434 600 139

Antique Repairs

By **Doug Burns** est. 1976

- All Furniture
- French polishing
- Carving
- Veneering
- Wood Turning
- Porcelain



Unusual Requests Welcome

180 Barwon Terrace, Winchelsea

0428 672 704

B & H Modifications

Bob Verity

55 Stephenson Road
Winchelsea 3241
Ph: 5267 2467
Mobile: 0411 610 678



Industrial Sewing Machine Work

Caravan Annexes, Trailer Covers, Shade Sails, Alterations and Repairs to Camping and Tents. Clear PVC Blinds Repairs to CLEAN Horse Rugs No Job Too Small
Email: bobverity@southernphone.com.au

Winchelsea Trading—agents for:

UNIVERSAL TOOL SHARPENING

For all your sharpening needs
Rural—Domestic— Industrial

- Hand tools
- TCT Blades
- Chainsaws
- Kitchen tools
- Garden tools
- Brobos
- Firewood saws
- Bandsaws

- Chipper & planer blades
- Drill and router bits
- Dog & horse clipping blades

5248 2061

‘We give you the edge you need’

NO MATTER WHAT YOUR PROBLEM, DODDS ELECTRIX CAN DEFUSE THE SITUATION.

RURAL, INDUSTRIAL, COMMERCIAL. DOMESTIC
PHONE 0438 887 360
EMAIL: DODDSY@FASTMAIL.FM
PO BOX 36 BIRREGURRA, VICTORIA 324
REC: 17520 ABN: 64 581 250 880



5234 6585 0417 385 984
For all your domestic & stock water.
Also available for road and civil construction
Local owned and operated.



St Vincent de Paul Society
good works


Covering Meredith, Bannockburn, Anakie, Lethbridge, Inverleigh, Teesdale, Shelford, Elaine and Winchelsea

52219170

Monday - Friday 9am to 2 pm
<http://www.vinnies.org.au>

A caring Catholic organisation offering “a hand up” to all people in need.

TRENCHES & HOLES PTY LTD.



PHILLIP ROBERTSON
0427 672 945
WINCHELSEA

- General Earth Works
- Driveways
- Trencher
- Kanga Loader
- Grader
- Excavator Work (3.5 & 6.5 Tonne)
- Tip Truck
- Rock Breaker
- Post Holes & Shed Footings

A.B.N 74006896898



WINCH WEBSITES
WEB SOLUTIONS SIMPLIFIED.

WEBSITES

**GROW business
INCREASE reach
SAVE time**



Find out what a website could do for you
winchwebsites.com.au
04 887766 20

CONCRETER

Alister Aitken

No job to big or small

- Driveways - Carports - Crossovers – Footpaths - Sheds Slabs - Colored Concrete – Concrete sealing - Exposed Aggregate – & more -

Call or text for a no obligation free quote

Servicing our local Winchelsea & Surrounding Areas

alaitken.aa@gmail.com or Alister - 0411 871 950

A.B.N 47 228 574 460

Property Slashing and Block Mowing

FREE QUOTES

Competitive rates for property slashing and mowing of your block. Servicing entire of Surfcoast shire and surrounding shires.

Call Scott TODAY to discuss your needs and to book in.

0408 523 290

.....
Located WINCHELSEA



IN & OUT LOGISTICS
A Reliable and Local business



Winchelsea Community House

Hours: Monday – Friday, 9.00am - 2.00pm

Address: 28 Hesse Street, Winchelsea

Phone: 5267 2028

Email: reception@winchhouse.org.au



FOOD HANDLERS COURSE FOR ALL AGES

TO BE HELD OVER 2 EVENINGS (MUST ATTEND BOTH)

MONDAY 24TH OCT AND WEDNESDAY

26TH OCT AT 6.30PM

BOOKINGS ESSENTIAL PLEASE EMAIL

manager@winchhouse.org.au

COST \$150

TAI CHI CLASSES

9am Friday mornings– Beginners

9.30am Friday mornings—Advanced

Cost is \$10 per session

LIBRARY STORYTIME

Next session

Friday 14th October at 2.00pm in the Shire Hall

Cost: FREE

LEVEL 2 FIRST AID COURSE AND CPR UPDATES

SATURDAY 12TH NOVEMBER AND SATURDAY 3RD DECEMBER

FULL COURSE \$160 (8.30-3.30)

CPR ONLY \$65 (8.30-11.00)

BOOKINGS ESSENTIAL

PLEASE EMAIL

manager@winchhouse.org.au

POWER SAVING BONUS

\$250

WINCH HOUSE IS ABLE TO HELP WITH YOUR POWER SAVING BONUS CLAIM OF \$250

PLEASE PHONE US FOR AN APPOINTMENT

IN TERM 4

52672028



Winchelsea Community Facebook pages

What's on in Winchelsea

FLYERS, LOCAL EVENTS, SMALL
BUSINESS, PROMOTING
WINCHELSEA

facebook.com/WhatsoninWinchelsea

Winchelsea FREE

FREE ONLY

facebook.com/groups/winchelseafree

Winchelsea Community Information
AUSTRALIA

POSITIVE DISCUSSION

[facebook.com/
groups/207538644446972](https://facebook.com/groups/207538644446972)

Winchelsea Classifieds 3241

FOR SALE ONLY

[facebook.com/
groups/216942861684082](https://facebook.com/groups/216942861684082)

Winchelsea Lost and Found

LOST PETS

[facebook.com/
groups/768187693217518](https://facebook.com/groups/768187693217518)

Winchelsea op shop

[facebook.com/
HospitalAuxiliaryOpShopWinchelsea](https://facebook.com/HospitalAuxiliaryOpShopWinchelsea)

Winchelsea Tea Rooms (community
centre)

facebook.com/WinchelseaTeaRooms

Winchelsea Community House

[facebook.com/
winchelseacommunityhouse](https://facebook.com/winchelseacommunityhouse)

Winchelsea Coronavirus Community
Support Group

[facebook.com/
groups/2676957719207927/](https://facebook.com/groups/2676957719207927/)

The Green Winchelsea Residents

[facebook.com/
groups/515322772623126](https://facebook.com/groups/515322772623126)

Growing Winchelsea Inc

facebook.com/growingwinch

Winchelsea Star

winchelseastar.org.au/step/subscribe/

Winchelsea Movie Club

facebook.com/winchelseamovies

Winchelsea Community Market

facebook.com/winchelseafarmersmarket

Winchelsea Land and River Care Group

facebook.com/envirowinchelsea/

Upper Barwon Landcare Network

facebook.com/UpperBarwonLandcare

Winchelsea & District Historical Society
Inc.

[facebook.com/
Winchelseaanddistricthistoricalsociety/](https://facebook.com/Winchelseaanddistricthistoricalsociety/)

Winchelsea Wildlife Shelter

www.winchelseawildlifeshelter.com/

SCARS - Surf Coast Animal Rescue
Service

facebook.com/groups/415211698950674

Winchelsea Gardeners

[facebook.com/
groups/779878518703025](https://facebook.com/groups/779878518703025)

Winchelsea & District Historical Society

[facebook.com/
Winchelseaanddistricthistoricalsociety/](https://facebook.com/Winchelseaanddistricthistoricalsociety/)

Winchelsea Repertory Society Inc

facebook.com/winchrep/

Winchelsea Globe Theatre

[facebook.com/Winchelsea-Globe-
Theatre-164790897641678](https://facebook.com/Winchelsea-Globe-Theatre-164790897641678)

Winchelsea Uniting Church

facebook.com/winchelseaunitingchurch

St Thomas' Anglican Church

facebook.com/StThomasWinchelsea

St John the Baptist Catholic Church

[facebook.com/pages/Winchelsea-
Catholic-Church/101775670163180](https://facebook.com/pages/Winchelsea-Catholic-Church/101775670163180)

Winchelsea Mainly Music

[facebook.com/
groups/668500343953191/](https://facebook.com/groups/668500343953191/)

Winchelsea Health Club

facebook.com/WinchelseaHealthClub

Winchelsea Playgroup 2019

[facebook.com/
groups/551663435367031](https://facebook.com/groups/551663435367031)

Winchelsea Girl Guides

www.guidesvic.org.au/

Winchelsea/Modewarre Scouts

facebook.com/1stModewarreScouts

Winchelsea Fire Brigade

facebook.com/winchelseafirebrigade/

Winchelsea SES

facebook.com/groups/WinchSES

Country Women's Association - CWA
Winchelsea Branch

facebook.com/pg/CWAWinchelsea/

Winchelsea Bowls Club

[facebook.com/Winchelsea-Bowls-
Club-53378333344345/](https://facebook.com/Winchelsea-Bowls-Club-53378333344345/)

Winchelsea Blues Cricket Club

facebook.com/groups/8999049476/

Winchelsea Blues FC

facebook.com/WinchelseaFNC/

Mel's Dance Studio

facebook.com/melsdancecentral

Winchelsea Golf Club

facebook.com/winchelseagc/

[facebook.com/
groups/1324943804676697](https://facebook.com/groups/1324943804676697)

Winchelsea Kyokushin Karate Club

facebook.com/winchelseakyokushin

WYLD Winchelsea Youth leisure and
drop in

[facebook.com/
groups/569737570027065/](https://facebook.com/groups/569737570027065/)

Lions Club of Winchelsea

facebook.com/LionsWinchelsea

Winchelsea Probus

10am 1st Mon month at Sen Citz Hall

Winchelsea Churches

Winchelsea Uniting Church

Hesse St, Winchelsea 3241
uca.winchelsea@gmail.com
0475 777 301

Services 9.30am Sundays

St John's Catholic Church

Harding St, Winchelsea 3241
Father Joseph Panackal
0404598558

St Thomas' Anglican Church

Barwon Tce,
Winchelsea 3241
Rev'd A. Lynne Clarke
stthomaswac@gmail.com
0477 672 042

All the churches of Winchelsea are happy to welcome any who would like to join them for worship.

St John's

St John's Catholic Church in Harding Street meets at 5.00pm on Saturday evenings.

Baptism preparation is on the first Tuesday of the month at St Mary MacKillop Church, Bannockburn.

Please contact Anita, 0409 432 833 or Father Joseph Panackal, 0404 598 558

Uniting

Winchelsea Uniting Church in Hesse Street meets at 9.30 am every Sunday morning.

Worship is followed by morning tea.

Phone 0475 777 301
uca.winchelsea@gmail.com

St Thomas'

St Thomas' Anglican Church in Barwon Terrace meets at 10.00 am every Sunday morning, followed by morning tea in the hall.

Activities at St Thomas' during the week.

Monday 10.00 am - Mainly Music.

Wednesday 10.00 am - Know Your Bible.

Thursday 10.00 am – Playgroup, meets fortnightly, next time, next time, 20th October.

Friday 10.00 am - Know Your Bible.

Saturday 3.00 – 4.30 pm - Free Craft for those 13 to 20. BYO project. Call Ellen Miller 0439 439 065

Phone Rev Lynne Clarke 0477 672 042
stthomaswac@gmail.com

Thought for the Week

“God has given each of us the ability to do certain things well.

Since your natural abilities are from God,

they are just as important and as “spiritual” as your spiritual gifts.

The only difference is that you were given them at birth.”

John Bader (Lay Preacher)
Uniting Church.

The Colac Players

The Colac Players are in rehearsal and enjoying lots of laughs as they prepare 5 short plays to be presented in cabaret in November.

We are thrilled to announce that The Red Violets will be performing with us, so you'll go home tapping your toes and smiling!

Another exciting first for us is to be performing at the beautifully renovated Birregurra Mechanics Hall.

We are looking forward to a fun filled night with familiar faces and new talent on stage and in the directors' chairs. Palila Opit who played the lead in 'Sylvia' is acting again and also directing 'Oy Vey Maria' a manger scene with a difference. Audiences will be delighted

to see Rhonda Mahoney on stage as well as directing a popular melodrama. John Simmonds and David McKenzie join the ranks of dual actor/directors.

The late November dates- Thursday 24th to Saturday 26th – yes! 3 nights only – are perfectly timed for your end of year gatherings with work mates, family and friends, something we have all missed in recent years so start planning your pre-Christmas night out now.

Tickets are \$33 and will be sold online at trybooking.com/CDBJV and at Cow Lick Bookshop.

Supper and drinks will be BYO.

'On with the Show' with your local Colac (and district) Players!

Enquiries: Ros Scanlan 0417 597 186

WCC Round 2 Results



A-Grade Winchelsea 7/188 tied, Portarlington 4/188

B Luppino 60 R Edwards 2/32
 A Korth 39 M Partridge 1/45
 J Mansbridge 24
 R Edwards 18
 D Spong 16 not out

B-Grade Winchelsea VS Inverleigh
 Match Abandoned

Brought to you by



Player of the Round Round 2

Sponsored by



A-Grade

**Baiden
Luppino
60 Runs**

Sponsored by



ROUND THREE

SATURDAY 15TH OCTOBER AT 1PM



**A-GRADE
AT EASTERN RESERVE**



**B-GRADE
AT MEMORIAL
RECREATION RESERVE**



**D-GRADE
AT WINCHELSEA CRICKET
GROUND - HESSE STREET**



Election campaign encourages voters to have their say

A state-wide advertising campaign to drive broad public awareness of the upcoming State election launches today, encouraging Victorian voters to enrol, vote, and sort fact from fiction before casting their vote this November.

The Victorian Electoral Commission (VEC) surveyed voters late last year on their preference for advertising concepts, themes and feel. The overwhelming response was for a reprisal of the VEC's popular 'paper (ballot) people' animated campaign used in 2014 and 2018.

'We are all about listening to voters and understanding their needs and expectations,' says Dana Fleming, Deputy Electoral Commissioner. 'Voters told us they wanted simple, straightforward messaging and they liked the animations.'

Ms Fleming says that apart from increasing awareness of how, when and where to vote, the VEC is also rolling out 2 additional campaigns.

'We've just received a report from our online research panel; 89% of respondents agree that electoral misinformation and disinformation is not acceptable, and the same number feel that the VEC should respond directly to this activity.'

'Consequently, we have developed a media literacy campaign to build public awareness on identification of misinformation and disinformation campaigns. We invite voters to visit our website for tips and to check our online misinformation register.'

For more information on electoral misinformation and disinformation, please visit: vec.vic.gov.au/misinformation, or to download the 'paper people' campaign images go to: vecvault.mediavalet.com/portals/mediaportal

Winchelsea Bowls Club news and scores

By Kitty 'n Jack

The season commenced on Saturday the 4th of October with a bit of a bang when all 5 Winchelsea teams won their matches in the first week of Pennant 22/23.

Saturday Division 1 def Colac at home, 120 shots to 100 shots winning 2 rinks and drawing 1 rink. Winch 15 points Colac 3 points. Saturday Division 3 def Camperdown Golf away winning all rinks 107 shots to Golf 56 shots. Winch 18 points, Golf 0 points. Saturday Division 4 def Lismore at home winning 52 shots to 28 shots. Winch 14 points Lismore 2 points.

Midweek Pennant Division 1 def Apollo Bay away, 90 shots to 60 shots, winning

2 rinks. Winch 14 points A. Bay 2 points. Midweek Division 3 def Camperdown Golf at home, 77 shots to 63 shots winning 1 rink. Winch 12 points C. Golf 4 points.

Saturday 8th Division 1 were def by Colac Central away, 71 shots to 116 shots, winning 2 rinks. Winch 4 points Central 14 points. Saturday Division 3 def Simpson at home, 91 shots to 61 shots, winning 3 rinks and drawing 1 rink. Winch 17 points Simpson 1 point. Saturday Division 4 were def by Cressy away, 41 shots to 44 shots. Winch 2 points Cressy 14 points.

Ladies Consistency Singles Annie Walker vs Julie Johnson in final to be played at a date to be confirmed.

Men's Events just commencing as 6 Men were playing in State Men's Triples on Sunday the 9th October.

On Thursday the 13th and Thursday the 20th the Ladies Over 60 State Singles will be played at Winchelsea. Spectators welcome on these 2 days.

Friday nights continue to remain well attended and everyone is warmly encouraged to attend Thursday Coaching sessions and practice where Rhys Jeffs our coach is available to assist and give experienced advice to all members from around 4.30 p.m. onwards. Keep working to enjoy your games, the teamwork and the atmosphere around the Club and may the bowls be with you!!

Corangamite CMA community engagement network begins new chapter

Community representatives from across the Corangamite catchment met this week to launch a three-year term of the Corangamite Catchment Management Authority's Community Engagement Network (CEN).

The Community Engagement Network provides a forum for information exchange to strengthen community understanding of the Corangamite CMA's role in natural resource management within the region; identify community needs, issues, and barriers to participation in natural resource management.

Corangamite CMA Chief Executive Office, John Riddiford said our Community Engagement Network is about fostering community advocacy and support for improved natural resource management in our region to ensure healthy and productive lands and waters are cared for by thriving communities.

"Twenty-nine passionate and diverse individuals' make-up the members of



our Community Engagement Network, many are ongoing members and others have been newly appointed to the network. It is excellent to see a diversity of talent, interest and geographic representation across the region. For example, we have a diverse age range with several members in their twenties who are passionate about expanding their knowledge and leading the next generation of environmental stewards," said Mr Riddiford.

The first meeting of the new term was held at the Colac Bowling Club where the network enjoyed an introduction to the organisation. The network learnt about the diverse roles and teams that

make up the Authority and the vital role each has to best support the catchment and community.

There was also an opportunity for members to mingle and strengthen their own personal connections with each other.

Corangamite CMA Chair, Catherine Jenkins said, "As a Catchment Management Authority, our key role is to improve the health of our natural resources and sustainable productivity of the Corangamite region. We can only achieve this by working with the community.

Have your say on draft Youth Strategy

The Surf Coast Shire Council is calling on the community to have a say on its draft Youth Strategy 2022-2025.

The draft strategy, which has been informed by community consultation, aims to create a community and environment that empowers young people to thrive.

It includes six focus areas: recreation, arts, culture, mental health support, alcohol and other drug support and environment.

You can view the draft strategy and provide feedback until 30 October at surfcoast.vic.gov.au/YouthStrategy.

Cr Gary Allen said the Surf Coast Shire

is home to around 5,200 young people aged 12 to 25 years, who make up 14% of the local population.

"The issues that young people face now are vastly different to those of the generation before, so the strategy is tailored to the needs of today's youth," Cr Allen said.

"It has largely been informed by the results of our Surf Coast Youth Census, completed late last year."

"A total of 1,084 young people from across the shire completed the questionnaire component of the survey, which equates to just over 20% of our youth population. Pleasingly, 97% described living on or near the Surf Coast as good, great or amazing, and

95% said they were excited about the future."

A number of key themes regarding what matters to young people emerged from the Youth Census, including environmental issues, a need for diverse recreation facilities, and support for social and emotional issues.

Cr Allen said the draft strategy set the direction and long-term structure for the Council's work with young people.

"It sets out how we will partner with experts, other organisations and groups to ensure our young people can reach their full potential in life."

"I encourage anyone with an interest to read the strategy and provide feedback."

New master plan for Australian National Surfing Museum

A new master plan maps an exciting 30-year vision for Torquay's Australian National Surfing Museum, showcasing its internationally-significant collection as part of a new Surf Coast Cultural Centre.

Surf Coast Shire Council endorsed the plan at its September meeting, setting a strategic framework for the Museum's sustainable operations and potential redevelopment.

"This is an exciting step as we move towards creation of a new cultural precinct in Torquay with the Museum at its heart – engaging, educating and entertaining visitors from across our region, country and the world," Cr Mike Bodsworth said.

"Our vision sees the Museum occupying a new, larger space in the Surf Coast Cultural Centre, enabling better displays of its permanent and temporary exhibitions and focusing on new and accessible ways to connect. Importantly,

the Master Plan also applies to the Museum in its current form.

"Our unrivalled collection of more than 12,000 items, including housing of the Australian Surfing Hall of Fame, reflects on such rich touchpoints and stories of identity, place and belonging in relation to Australian surfing and associated culture. Independent assessment by Circa Museum Services in 2021 identified its collection as being of both national and international significance."

Stage one plans for the centre to include redevelopment and expansion of the Museum, joining Torquay Library and Torquay Visitor Information Centre in a new building incorporating the existing redeveloped Multi Arts Centre and headquarters for Surfing Victoria.

The Australian National Surfing Museum was established by Surfing Australia in 1993 and ownership and management was transferred to Council in 1994.

The Museum is open seven days a week, from 9am-5pm.

direct
TEMPORARY FENCING

FOR HIRE - SUPPLIED & ERECTED - 7 DAYS
GEELONG - BELLARINE - COLAC - SURF COAST
PHONE CAM 0417 310 800

AFS BOOKKEEPING

"Your local bookkeeper"

Bookkeeping
Administration
Payroll
BAS Services
Xero / Myob
Reckon / Quickbooks
Registered BAS Agent

Angelique Snetselaar

0456 077 485

info@afsbookkeeping.com.au
www.afsbookkeeping.com.au

TAX PRACTITIONERS BOARD
REGISTERED



Black Belt ?

Is our illustrious leader (Lions President Murray) hoping for a karate black belt !!!!! Or wasn't the food up to scratch at the recent championships?



Notice of AGM Winch Community House

Inc. No. A6247K

Notice is hereby given of the Annual General Meeting to be held on Wednesday 19th October, 2022, at 7.00pm in the Shire Hall Building, 28 Hesse St Winchelsea.

An invitation will be sent to all current 2021 members. All other interested people are asked to email manager@winchhouse.org.au so an invitation can be sent. Membership, which allows attendees to vote, is 20 cents.

AGENDA ITEMS INCLUDE:

- 1/ Annual reports from co-ordinators & Committee of Management including annual statement of income & expenditure.
- 2/ Nominations called from the floor for Chairperson, Treasurer, Secretary/Public Officer as well as five (5) Ordinary Members for the Committee.

The Chairperson will allow any business that is relevant to the Annual General Meeting to be brought forward.

Tony Phelps, Chairperson



Winchelsea Supermarket
 Trading Hours
Monday to Saturday
 8.30am to 7.30pm
Sunday
 10am to 7pm
Ph: 5267 2676
 29 Main St, Winchelsea



For more information
 phone 0409 433 687 or
 visit our facebook page
 MGT Carpentry

AVAILABLE FOR HIRE

Vermeer and 4in1 bucket

Augers
Forks
Smudger

MGT CARPENTRY



Chiropractic - Remedial Massage - Myotherapy - Sound Healing - Breathwork



Chiropractic care for:

Stress & Anxiety	Pain Management
Body Aches & Tension	Family Wellbeing
Poor Sleep	Health Longevity

03 5267 2240 Shop 4/21 Hesse St Winchelsea   <https://onebodychiropractic.com.au/>




**Winchelsea
Medical
Clinic**

36 Main Street, Winchelsea

Bulk Bills patients on Pension, Health Care Card and Children
Enquiries and Bookings please phone 03 52 928 028 or
www.winchmc.com.au

We are a vaccination provider   **COVID-19 VACCINATION**
Safe. Effective. Free.

NATURAL GAS CONNECTIONS

**M. & L DRAYTON
PLUMBING SERVICES**

YOUR LOCAL LICENSED

- PLUMBERS (24356)
- GAS FITTERS
- GAS CONVERTERS
- CARBON MONOXIDE TESTING

MARK 0428 520 142



Moriac Veterinary Clinic
0447 781 089
PHONE 24 HOURS
784 Hendy Main Road Moriac
info@moriacvet.com
www.moriacvetclinic.com.au
HOURS // Monday - Friday: 8am - 5pm



RONNIE.
Winchelsea's
pet groomer.
For appointments
0436 008 989
tangopetgrooming@gmail.com

Lupton BUILDERS



SPECIALISING IN QUALITY




REGISTERED Building Practitioner

• NEW HOMES	• EXTENSIONS	• RENOVATIONS
• ALTERATIONS	• DECKS	• PERGOLAS
• GARPORTS	• VERANDAHS	• RE-GLADS
• BATHROOMS	• WINDOW REPLACEMENTS	

LEIGH LUPTON 0438 840 104	CHRIS LUPTON 0407 681 514
-------------------------------------	-------------------------------------

LEIGHLUPTON17@GMAIL.COM Est. 1977

Commercial | Industrial | Domestic

HAMILTONS

Truck & Bobcat Hire
Give Aaron a Call
0438 438 623



WHEN YOU NEED US, BUT NOT THE SIRENS

YOU CAN GO ONLINE NOW



VICTORIA POLICE



SAVE **131 444**



POLICE
VIC.GOV.AU
FOR NON-URGENT SITUATIONS

Big on products. Big on service.

And big on local banking

Find out more. Call us on 5267 3189 or search Bendigo Bank Winchelsea & District.



BANK LOCAL

B Bendigo Bank

Community Bank
Winchelsea & District



GREAT Bundle Deal on Bosch Hot Water... FROM ELGAS

Buy any Bosch Bluetooth continuous flow hot water model - 16 litre, 20 litre or 26 litre and **Receive \$100* in Elgas bonus LPG gas credits**

*For more details: www.elgas.com.au/appliances/bosch-cptflow-16-20-26-lpg-bundle-sale

AND... for new customers, an additional \$80 WORTH OF LPG GAS CREDITS when you open a new LPG Gas account with Elgas**

**Further details can be viewed at www.elgas.com.au

Ask about the Elgas Easy Payment Plan - 12 months interest free*** on selected LPG appliances

***Further details can be viewed at www.elgas.com.au/epp

Automatic tanker gas bottle refill OR gas bottle exchange refill is available for home or business....
Call today or visit our website for our many customer benefits and latest offers

131 161
www.elgas.com.au

ELGAS

FROM \$780 or \$52.50 per month

NO CONTRACT TO SIGN

©2019 ELGAS LTD.

STS ACCOUNTING GROUP

Your Taxation & Superannuation Specialists.

Winchelsea
5267 2673
www.surftax.com.au

VENUE 010064

STORAGE KING

SIMPLE STORAGE SOLUTIONS

- Personal & Business Storage
- Boat, Caravan & Vehicle Storage
- High Security Premises
- Individually Alarmed Units
- Electric Gate Access
- 7 Day Access & CCTV

YOUR STORAGE PROBLEMS SOLVED

5267 3116
6 ALSOP DRIVE, WINCHELSEA 3241



- Domestic and Commercial hire equipment
- Industrial welding gas
- Digging and Earthmoving equipment
- New trailers and trailer repairs
- Firewood
- Stockists of Royal Oil Lubricants products
- LPG for domestic and commercial requirements

Give Chris and the Team a call on **5232 1177** or email info@colachire.com.au

www.colachire.com.au
101 Wallace St Colac 3250

COLAC HIRE

M & L DRAYTON PLUMBING SERVICES

REG No 24356 C/A No C02594

- Domestic and Rural Plumbing
- Roofing
- Sewerage & Septic
- LPG & Natural Gas Connections
- Motorised Drain Cleaning
- Backhoe Hire

Phone Mark 5288 7244
PO BOX 98 WINCHELSEA 3241
Mobile 0428 520 142

Scott McDonald
0423 413 829

S.J.R AUTOMOTIVE
ARN 848 483 848 58
13 ALSOP DRIVE, WINCHELSEA VIC 3241

Aquafire Healing
Transforming Your Health Through the Healing Power of Nature

**NATUROPATHIC MEDICINE • HERBAL MEDICINE
NUTRITIONAL MEDICINE • HOMOEOPATHY
REMEDIAL MASSAGE**

www.aquafirehealing.com
Ph: 0415 530 276

SOUTHERN GRAIN STORAGE PTY. LTD.

AG SUPPLIES FERTILISER GRAIN STORAGE SEED CLEANING

(03) 5267 2351

HF RICHARDSON
PROPERTY

Servicing all your real estate needs
Ken McDonald **0418 524 150**

Residential | Rural Lifestyle | Agricultural Farms







Volunteers Required

- Bus Driver & Outings Assistant
- Resident Visitor
- Events and Activities Assistant
- Group Wheelchair Walks Assistant
- Appointments Escort
- Social Support Activities
- Gardening - Winchelsea

Volunteers are essential to our aged care system, supporting the wellbeing of older people in their homes and in residential settings.



For more information please contact Jessica Culhane, Communications and Community Partnership Officer via phone on [03152671200](tel:03152671200) or via email jculhane@hesse.vic.gov.au

Services Available



- Acute Hospital
- Urgent Care
- Residential Aged Care
- Dementia Specific Care
- Home Care Packages
- District Nursing
- Diabetes Education
- Dietician
- Occupational Therapy
- Podiatry
- Physiotherapy
- Planned Activity Groups
- Community Health Groups
- Palliative & Continence Care
- Maternal Child Health

5267 1200
Servicing Winchelsea, Bannockburn, Beeac,
Rokewood, Teesdale and Districts

Winchelsea Towing

24 Hour Accident and Breakdown Towing

0418 535 402



Wightons Lawyers

Dispute Resolution & Litigation

Debt Collection

Property Law

Wills & Estates

Powers of Attorney

Business Law

Family Law

By appointment only

22 Willis Street, Winchelsea
ph. 5221 8777

www.wightons.com.au

RM & ME PLUMBING Pty Ltd

All General & Rural Plumbing

NEW HOMES, RENOVATIONS, EXTENSIONS

SEPTIC TANK INSTALLATIONS

SAND FILTERS, TREATMENT PLANTS

Agents for CLARK WATER TANKS

Ross Matthews

0417 561 558

Murray Ellis

0434 600 139



Connecting you to a greener future
HIC 23018

0467 097 101

Servicing Geelong & the Surf Coast

Specialising in all residential electrical work including:

- Switch board & lighting upgrades
- Outdoor lighting
- Electrical safety checks
- Energy efficient LED lighting
- Ceiling sweep fans & ventilation
- Energy saving advice

Phone Martin Wilkinson:
0467 097 101
greenlead@outlook.com

132288-0018-14



R.A.K. DAVIS & SONS

CARTAGE CONTRACTORS

WINCHELSEA

**SUPPLIER OF ALL QUARRY MATERIALS, TRUCK HIRE
CARTAGE OF GRAIN, LIME, GYPSUM & SUPER
LANDSCAPE & GARDEN SUPPLIES**

**56 WILLIS ST, WINCHELSEA
Ph – 5267 2094
Ryan – 0438 672 281
Email: rakdavis@bigpond.com**

Winchelsea Star

Since 1977



5234 6585 0417 385 984
*For all your septic tank, grease traps
and interceptor pits servicing.
Locally owned and operated*

Funeral Planning

Working out what is best for you.
Prepaid Funerals, Funeral Bonds, Pay-by instalments...

There are many options and its important to make the right choice.

Alyson Burchell will be available by appointment to answer any questions about funerals and planning ahead.

For more information or to make an appointment contact Sue on 5221 4788

*Tuckers Community Office,
Surf Coast Taxation Services, 22 Willis Street,
Winchelsea*

**First Tuesday of the Month,
by appointment 10.00am - 12.00pm**

Caring for families since 1883

Tuckers
Funeral & Bereavement Services
...for a life worth celebrating

5221 4788
www.tuckers.com.au

CHARLES STEWART
rma network. Accredited Member

Charles Stewart & Company are leading livestock and real estate service providers covering Victoria's south west

	LIVESTOCK
Jamie McConachy	0418 522879
Peter McConachy	0408 522878
Matt Nelson	0428 315400
Gerard Bohan	0400 005541
Lachie Barclay	0438 346291
John Thornton	0408 526367
Dougal McIntyre	0439 575612
Ross Spitty	0419 539717

	REAL ESTATE
Michael Stewart	0418 520467
Daryl Osborne	0419 388341
Anthony McDonald	0418 593597
Gerard Bohan	0400 005541
Stephen Lugg	0417 556098
Josh Lamanna	0417 586032

Office
56 Bromfield Street, Colac
www.charlesstewart.com.au

Pixie Wash

Mobile Doggie Care
Dogs up to 20kg
Pixie Heath
0417 586 080

One stop auto shop

17 Alsop Drive

- ❖ LOG BOOK SERVICE
- ❖ AUTO ELECTRICAL
- ❖ TOWING
- ❖ AIR CONDITIONING
- ❖ CLUTCH & BRAKES
- ❖ TYRES
- ❖ WHEEL ALIGNMENT
- ❖ BATTERIES

CAR, TRUCK REPAIRS & Roadworthys

PH: 5267 3001

Mob: 0417 137 457