

KAVO

eSCALER

Precision and quality
at the highest level.



The highlights at a glance.

Treatment solutions for all cases

Tips for sub- and supragingival applications.



Quality you can trust

Made by KaVo in Germany.

Outstanding visibility

Perfect lighting thanks to innovative, ring-shaped LEDs.

Maximum flexibility

Can be integrated into all current KaVo dental units and retrofitted to all existing dental units with PiezoLED.



Dynamic Performance Technology™

The dynamic power adjustment ensures gentle but effective patient treatments.

Intuitive and precise at the same time

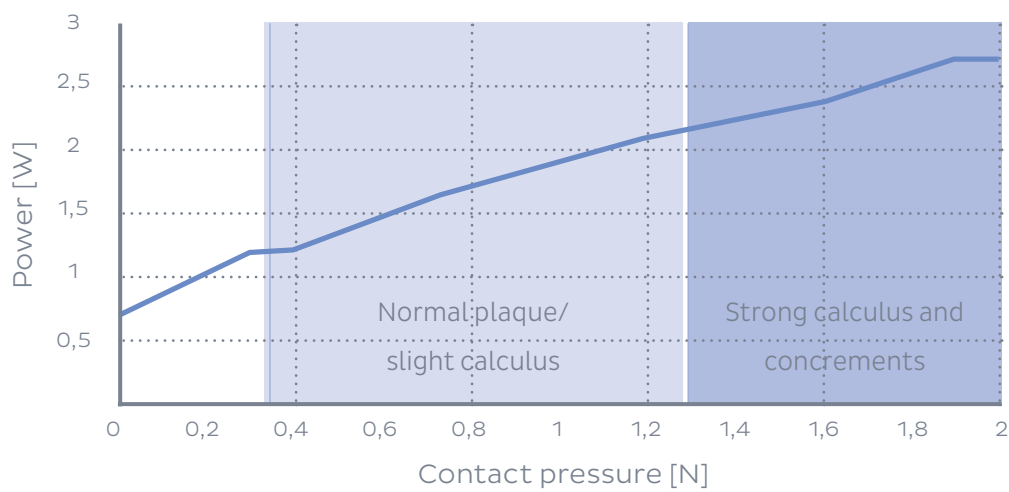
Linear oscillating tip movement and stepless power adjustment.

Easy reprocessing

All components can be thermodisinfectated and sterilized.

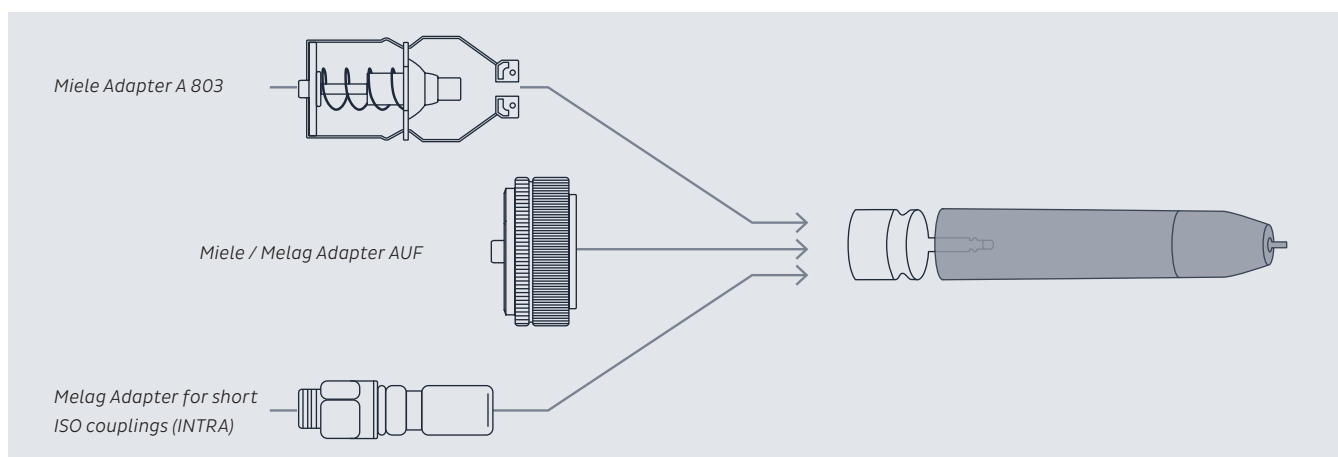
Dynamic Performance Technology™

Thanks to the innovative Dynamic Performance Technology™, the KaVo eSCALER recognizes how much pressure is applied during the treatment. To protect the tooth structure, less is more when removing plaque and light calculus. If the dentist increases the pressure to remove calculus or concretions, the power continuously increases in line with the pressure. This enables a gentle, pleasant and effective treatment at the same time.



Reprocessing

With the KaVo eSCALER, you get uncompromising hygiene and maximum safety – always compliant with standards. Thanks to its sophisticated design, the LED module and the light guide can be easily removed. All components, including the tips, can be thermodisinfectated and sterilized. The reprocessing adapter for thermal disinfection is already included in the scope of delivery. You can rely on a solution that effortlessly complies with valid hygiene regulations and makes your everyday practice life noticeably easier.

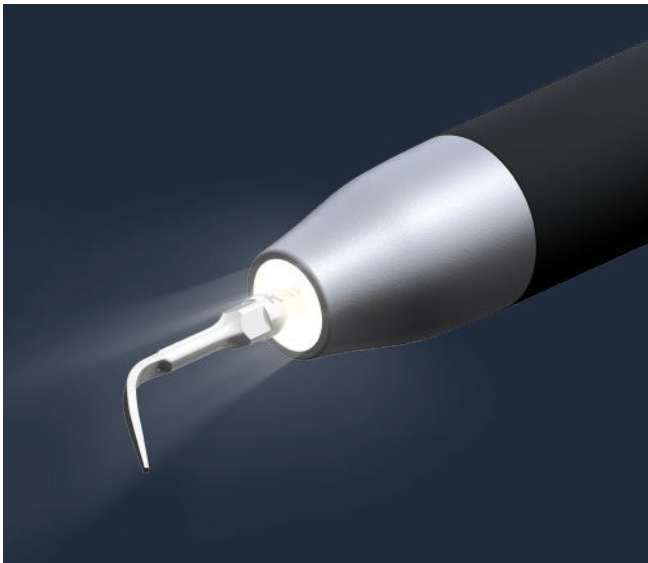


Hygiene Center

Thanks to an adapted insert within the hygiene centre of the KaVo dental units, cleaning the KaVo eSCALER instrument tube is also intuitive and simple.



Accessories / Components



The KaVo eSCALER demonstrates outstanding reliability and robustness that only German engineering can offer. Moreover, you can easily replace both the light guide and the LED module of the KaVo eSCALER. A replacement light guide is already included in the standard scope of delivery. This keeps you flexible at all times.

Versatile and equipped for the future: The KaVo eSCALER tip portfolio

Versatile tip portfolio from the removal of pigment spots to the removal of calculus and concrements in the sub- and supragingival areas.

eSCALER	Tip K201	Tip K202	Tip K203	Tip K214
Mat. No.	1.015.4741	1.015.4742	1.015.4743	1.015.4744
Product	Universal scaling tip	Universal scaling tip	Perio tip	Perio tip
Application area	For the removal of supragingival calculus in all quadrants	For the removal of supragingival calculus and subgingival concrements up to 4 mm pocket depth in all quadrants	For the removal of subgingival deposits and concrements for deep dental pockets (up to 10 mm)	For use in periodontal pockets. Especially suitable for control and repeat treatments
Tooth substance	Enamel	Enamel and root surface	Enamel and root surface	Root surface
KaVo eSCALER compatibility	✓	✓	✓	✓
PiezoLED / PIEZOsoft compatibility	✓	✓	✓	✓

Please note the respective recommendations for power settings

All products can be ordered individually.

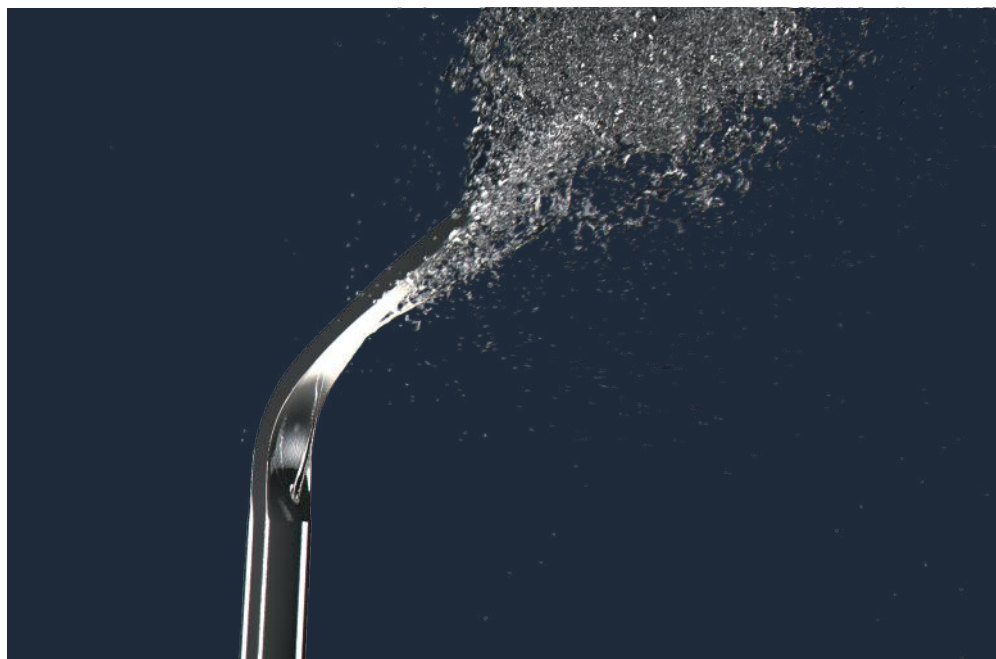
The following components are part of the standard scope of delivery of the KaVo eSCALER when the KaVo eSCALER is ordered as part of the dental unit configuration or as a retrofit kit:

1x KaVo eSCALER Starter Set (1.015.2000)

- 1x KaVo eSCALER Handpiece
- 1x eSCALER Reprocessing Adapter
- 1x eSCALER Replacement Light Guide
- 1x eSCALER Tip Wear Card

1x KaVo Tip Set (1.015.2050)

- 1x eSCALER Tip K201
- 1x eSCALER Tip K202
- 1x eSCALER Tip K203
- 3x eSCALER Torque Wrench



Dental excellence in every area.

What we stand for as a brand

KaVo is a well-established brand with a strong legacy. Our brand and our products represent the highest possible quality and reliability – and have done for over 100 years. This gives our customers peace of mind, so that they can concentrate on doing their best work.

To achieve this, KaVo combines the fundamentals of ergonomics, optimized hygiene, and design into the best overall package without compromise. The perfect interplay of dynamics and expertise keep us at the forefront of modern dentistry.



KaVo Dental Units -
Invest in your own health



KaVo Instruments -
Feel the difference



KaVo Imaging -
See more, plan better



Dental Training -
Excellent learning



KaVo Service -
We are at your side

The products, equipment and services shown and described in this catalog are not available in all countries. All information corresponds to the knowledge available at the time of printing. KaVo Dental GmbH accepts no liability for deviations in color and form from the illustrations, errors and misprints and reserves the right to make changes to the brochures at any time.

KaVo, ESTETICA, uniQa, amiQa, Lumina and eSCALER are registered trademarks of KaVo Dental GmbH.