

Course Catalog 2025-26



Learn. Serve. Grow.

Building Capability, Strengthening Service.

Table of Contents

Sewa Academy Course Catalog- 2025-26



Introduction to Course Catalog

A. About Sewa International.....	04
B. Message from the President.....	05
C. About Sewa Academy.....	06
D. Early Impact of Sewa Academy.....	07
E. What do we do? and How We Do It?.....	08

Sewa Academy – USA_Portal

Vertical: Administration

- Organizational Culture and Work Methodology.....10
- Information Security.....10
- Project Impact Report (PIR).....11
- Guidelines for Entering Timecard in ADP.....11
- Grant Utilization Report (GUR).....11

Vertical: Programs

- Introduction to Programs.....12
- Introduction to SERVE.....12
- Sewa Family Services.....13
- Understanding Sponsor A Child (SAC).....13
- SHE Program.....14
- Doctors for Sewa.....14
- Introduction to LEAD.....14

Vertical: Marketing and PR

- Government Relations:
Understanding of U.S. Government.....15
- Crisis Management and Communication.....15
- Media Engagement.....16
- Introduction to Public Relations,
Government Relations, and Lawyers for Sewa.....16
- Sewa USA Marketing and Communications.....17

Vertical: IT

- Basics of Information Technology.....17

Vertical: Organization

- Introduction to Organization.....18
- Sewa Chapter Structure.....18
- Sewa Chapter.....18

Vertical: Finance

- Budgetary Process.....19
- Sewa Expense Reimbursement Policy.....19
- Donation Fundamentals.....19

Vertical: Philanthropy

- Deep Dive: Grant Submission & Lifecycle.....20
- Deep Dive: Post-Grant Award Handover &
Program Implementation.....20
- Fundraising Essentials.....21
- Grants Management.....21
- Basics: Sewa Grants Opportunities.....21

Sewa Academy – USA Lead_Portal

- Ready To Lead (RTL) – Sewa Paramo Dharma.....23
- Design to Lead (DTL).....23
- VANI – The Sewa LEADership Journey.....23

Sewa Academy – SIB_Portal

- PoSH Training – Prevention of Sexual Harassment.....25
- पॉश (PoSH) प्रशिक्षण - यौन उत्पीड़न की रोकथाम.....25

Sewa Academy –Executing Partners_Portal

- Project Impact Report (PIR).....26
- Grant Utilization Report (GUR).....26

Sewa Academy – Sewa Bridge_Portal

- PoSH Training – Prevention of Sexual Harassment.....26

Conclusion

- Building Capability, Strengthening Service.....27

About Sewa International

In Sanskrit, Sewa means selfless Service. Sewa International USA is a Hindu faith-based, humanitarian, nonprofit service organization, inspired by values of **Sewa** - Selfless Service, **Dharma** - which sustains the balance in the Universe, **Vasudhaiva Kutumbakam** - whole world is one family, **Sarva bhoot hite ratah** - compassion for all living beings, **Sarvam Khalvidam Brahma** - All is divinity.

Guided by these principles, we serve humanity irrespective of race, color, religion, gender, or nationality, with dignity and respect.

Vision

We aspire to be the pre-eminent, Hindu faith-based, humanitarian organization that serves selflessly and with compassion to create a positive impact. We envision and strive for a world in which all people live in harmony, free from suffering.

Mission

Sewa International's mission is to serve humanity in distress, aid local communities, run developmental projects for the underserved, and assist people in transformational change through the power of innovation by mobilizing partners, donors, and volunteers.

Global Presence of Sewa



Growing Together in the Spirit of Sewa

Message from the President

Namaste Sewa Family,

It gives me immense pride and gratitude to present the Sewa Academy Course Catalog 2025–26. Sewa Academy represents more than a learning platform, it reflects our collective commitment to excellence in service. As Sewa continues to grow across geographies and verticals, structured learning has become essential to ensure clarity, consistency, and impact in everything we do.

Rooted in our timeless values of Selfless Service, Dharma, and Vasudhaiva Kutumbakam, Sewa Academy strengthens the capability of every karyakarta (volunteer, employee, and partner). By organizing our collective wisdom into structured modules, we are preserving knowledge, standardizing best practices, and empowering teams to serve with competence and confidence.

The Academy's expanding portfolio across five dedicated portals demonstrates our resolve to build institutional strength while nurturing individual growth. Every course is designed not only to inform, but to inspire purposeful action aligned with our mission.

I invite each of you to actively engage with Sewa Academy, learn continuously, share generously, and apply your knowledge in service to society. Together, we will continue building capacity, strengthening service, and upholding the true spirit of Sewa.

Warm Regards,

Sh. Srikanth Gundavarapu
President, Sewa International Inc.



About Sewa Academy

Sewa Academy is a structured knowledge-sharing and training platform of Sewa International, envisioned as a living repository of collective wisdom. It seeks to empower all karyakartas to serve with clarity, skill, and dedication, enabling them to run programs effectively at the local and national level. The courses curated by experts across Sewa’s verticals are grounded in the values of selfless service (sewa) and collective upliftment.

It captures, organizes, and transmits organization’s knowledge systems for all karyakartas in USA, Bharat and globally. Here, knowledge is not only preserved but practiced, enriched, and passed on strengthening the hands and hearts of every karyakarta.



Vision of Sewa Academy

To nurture an ecosystem of continuous learning and shared wisdom, inspiring every Sewa karyakarta to lead with competence, compassion, and alignment with Sewa’s mission enabling service that uplifts communities, strengthens bonds, and reflects the timeless Hindu value of “Vasudhaiva Kutumbakam” (whole world is one family).

Mission of Sewa Academy

To capture, organize, and share structured training modules across all Sewa verticals, ensuring that the knowledge and skills for selfless, value-driven service are within the reach of every karyakarta fostering collective responsibility, social harmony, and personal growth through purposeful action and service to society.

Values of Sewa Academy

- **Gyaan**
 The pursuit and sharing of knowledge, enabling karyakartas to serve with clarity and wisdom.
- **Satat**
 Continuous learning and improvement to keep service efforts relevant and impactful.
- **Sanrakshan**
 Preserving organizational culture, values, and accumulated knowledge for future generations.



- **Samvardhan**
 Enriching existing knowledge systems with new ideas, experiences, and innovations.
- **Adhyayan**
 Deep and reflective study that helps understand issues before taking action.
- **Sangrah**
 Systematically collecting and organizing resources, knowledge, and best practices.

Early Impact of Sewa Academy

As of 31-March-2026



Expanding Learning. Strengthening Service.

Sewa Academy currently offers **36 structured and comprehensive courses** delivered through **5 dedicated learning portals**, serving a growing base of **1,500+ active learners across verticals**.

Volunteers have completed over **10,000 hours** of structured learning, demonstrating strong engagement and commitment to excellence. To recognize this progress, the Academy has issued **3,000+ certificates**, with learners achieving an impressive 90% average assessment score.

These milestones are made possible through the contributions of **20+ experienced** course authors and trainers, ensuring every program remains practical, relevant, and aligned with Sewa's mission of value-driven service.

Sewa Academy Portals



Sewa Academy – USA LEAD

Dedicated portal for LEAD students across all USA chapters, focused on leadership development and youth engagement.



Sewa Academy – SIB

Learning platform for employees of Sewa International Bharat (SIB).



Sewa Academy – USA

Primary learning platform for MOS and volunteers of Sewa International USA, supporting structured training and organizational capacity building.



Sewa Academy – Sewa Bridge

Learning platform for employees of Sewa Bridge Consulting Private Limited (SB).



Sewa Academy – Executing Partners

Portal for project implementing partner organizations of Sewa International USA.



What do we do?

- We create modular, accessible, and engaging content aligned with the evolving knowledge needs of karyakartas across all levels.
- We standardize and certify volunteers in essential Sewa processes to ensure consistency and excellence.
- We encourage peer learning and the documentation of best practices, nurturing a tradition of shared wisdom.
- We make knowledge easily available through our Learning Management System (Zoho LMS), enabling karyakartas to explore courses and learnings from all verticals in one place.

How We Do It?:

- We work closely with Vice Presidents, Mission-Oriented Staff (MOS), and subject matter expert volunteers to gather and share their knowledge in a topic.
- We apply effective learning design principles to refine and structure this knowledge content into training-ready formats.
- We use visuals, stories, and interactive elements to make learning fun, engaging, and impactful.
- We ensure the right courses reach the right audience.
- We offer certification upon course completion—equipping every Sewa karyakarta to apply their knowledge and skills with confidence, integrity, and dedication in their chapters and communities.

Courses

My Learning | My Authoring | Explore | Question Bank

Course Title	Author	Lessons	Rating
The Project Impact Report (PIR)	Sewa Academy	4 Lessons	0.0
Sewa Chapter Structure	Sewa Academy	2 Lessons	0.0
Ready To Lead (RTL) - Sewa Paramo Dharma Discovering the Joy of Service.	Sewa Academy	8 Lessons	5.0
Sewa Chapter	Sewa Academy	6 Lessons	5.0
VANI - The Sewa LEADership Journey	Sewa Academy	18 Lessons	0.0
पॉश (PoSH) प्रशिक्षण - पौनःप्रायः की रोकथाम	Sewa Academy	14 Lessons	5.0
Understanding Sponsor A Child (SAC)	Sewa Academy	2 Lessons	5.0
PoSH Training-Prevention of Sexual Harassment	Sewa Academy		
PoSH Training-Prevention of Sexual Harassment.	Sewa Academy		
Budgetary Process	Sewa Academy		
Introduction to Serve	Sewa Academy		
Doctors For Sewa	Sewa Academy Admin		
Basics: Sewa Grants Opportunities	Sewa Academy Admin		
Donor Relations and Management	Sewa Academy Admin		

01

Sewa Academy – USA_Portal

The primary learning portal for Mission-Oriented Staff (MOS) and volunteers, of Sewa International USA. It delivers structured courses across all verticals, including **Administration & HR, Disaster Recovery, Finance, IT, Marketing & PR, Organization, Philanthropy, and Programs.**

The portal is designed to strengthen organizational capacity, enhance employee and volunteer skills, standardize processes, and ensure consistent, high-quality service delivery across chapters and teams.



250+

Active Learners



29

Structured Courses



5000+

Learning Hours



2,000+

certificates issued



VERTICAL: ADMINISTRATION & HR

Organizational Culture and Work Methodology

Vertical: Administration & HR

Purpose of the Course:

To strengthen understanding of Sewa's organizational culture, shared values, and standard work practices.

What Learners Will Gain:

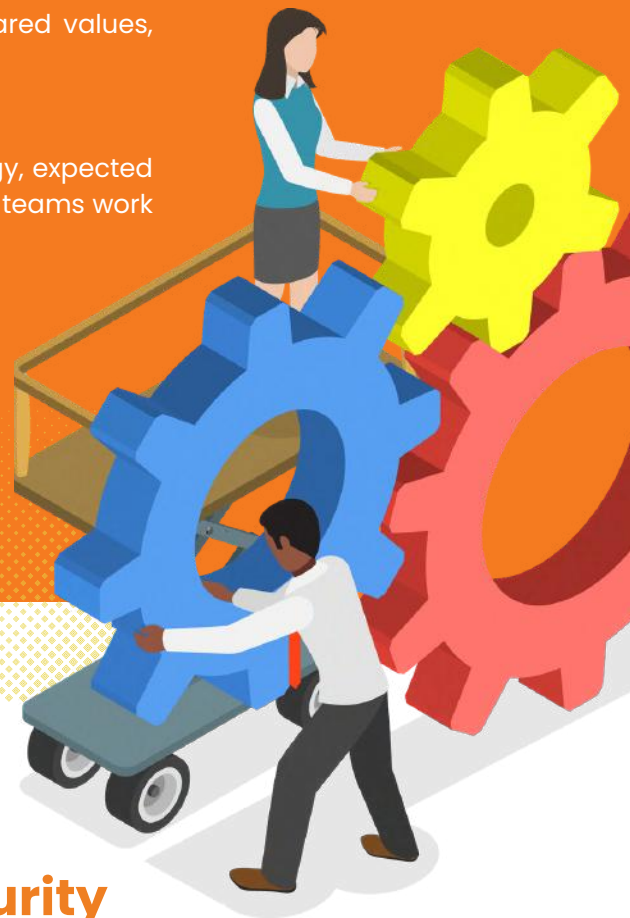
Learners will gain clarity on Sewa's shared values, work Methodology, expected work behaviors, collaboration practices, and accountability, helping teams work effectively and in alignment with Sewa's mission.

Key Coverage:

- Organizational values and culture
- Work ethics and professionalism
- Team collaboration
- Accountability and responsibility



CLICK HERE 



Information Security

Vertical: Administration & HR

Purpose of the Course:

To build awareness of information security responsibilities and protect sensitive organizational data.

What Learners Will Gain:

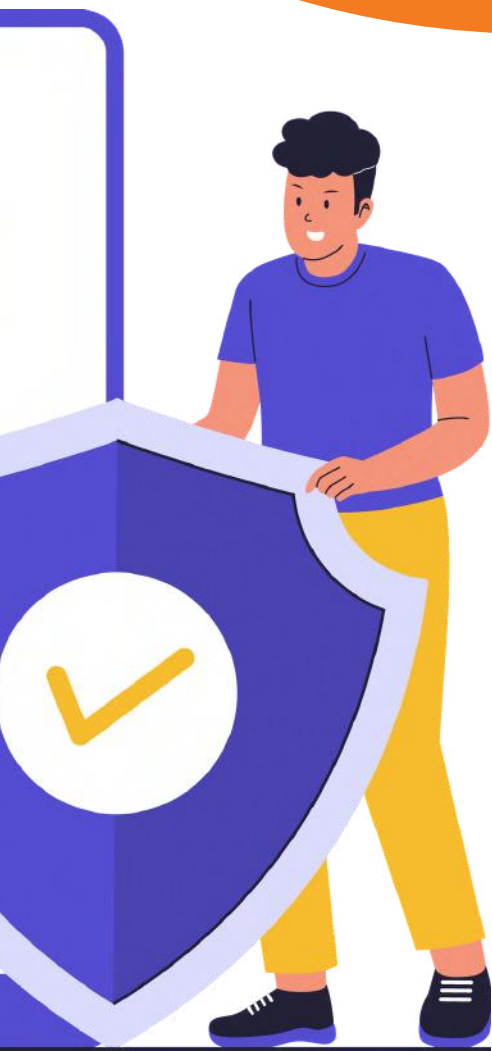
Learners will understand basic cybersecurity principles, data privacy expectations, and their role in preventing data breaches and security incidents.

Key Coverage:

- Information security fundamentals
- Data classification and privacy
- Password and access security
- Identifying security threats
- Individual responsibility in data protection



CLICK HERE 



Project Impact Report (PIR)

Vertical: Administration & HR

Purpose of the Course: To enable partner organizations who executes projects of Sewa to accurately document and report project outcomes in alignment with Sewa International USA's reporting standards.

What Learners Will Gain: Learners will be able to complete the standardized 10-section Project Impact Report, capture beneficiary data accurately, measure outcomes using SMART indicators, and present project impact with supporting evidence.

Key Coverage:

- PIR reporting standards
- PIR framework
- Beneficiary reporting
- SMART outcome measurement
- Impact evidence and stories of change



Guidelines for Entering Timecard in ADP

Vertical: Administration & HR

Purpose of the Course:

This course is for employees for Sewa USA, to ensure accurate payroll processing through correct timecard entry and formal leave application procedures.

What Learners Will Gain:

Learners will understand how to enter timecards in ADP correctly, apply for leaves as per policy, and maintain timely communication to avoid payroll issues.

Key Coverage:

- Timecard entry process in ADP
- Leave application procedures
- Payroll timelines and communication
- Common errors and FAQs



Grant Utilization Report (GUR)

Vertical: Administration & HR

Purpose of the Course:

To provide clear guidance to enable partner organizations who execute Sewa's projects, on preparing and submitting the Grant Utilization Report (GUR) in compliance with Sewa International USA requirements.

What Learners Will Gain:

Learners will understand the GUR process, reporting responsibilities, and compliance expectations, enabling them to submit accurate and timely utilization reports.

Key Coverage:

- Purpose of the GUR
- Reporting workflow and responsibilities
- Financial utilization details
- Audit and certification requirements
- Timely and compliant submission



VERTICAL: PROGRAMS

Introduction to Programs

Vertical: Programs

Purpose of the Course:

To provide a structured overview of Sewa International's major programs and how they collectively advance the organization's mission.

What Learners Will Gain:

Learners will gain clarity on key program tracks, their objectives, and how national teams and local chapters collaborate to implement and monitor impact-driven initiatives.

Key Coverage:

- Overview of major Sewa programs
- Program objectives and frameworks
- National team (Toli) coordination
- Chapter-level execution and oversight



Introduction to SERVE

Vertical: Programs

Purpose of the Course:

To explain the Serve Program and its structured, volunteer-driven approach to addressing community needs.

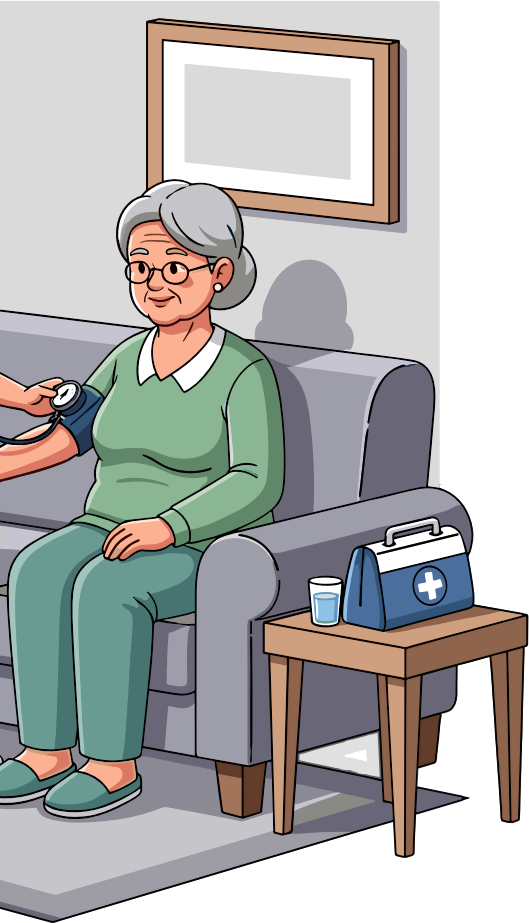
What Learners Will Gain:

Learners will gain clarity on the Serve framework, types of service initiatives, and how volunteers plan, execute, and measure service activities that create meaningful local impact.

Key Coverage:

- Serve vision, mission, and structure
- Types of service activities
- Event planning and coordination
- Partnerships and collaboration
- Impact evaluation and reporting





Sewa Family Services

Vertical: Programs

Purpose of the Course:

To provide an overview of Sewa's flagship program Family Services and its structured support model for immigrant and underserved families.

What Learners Will Gain:

Learners will understand how Family Services integrates education, health, and case management support to strengthen families and promote long-term community well-being.

Key Coverage:

- Education and awareness initiatives
- Health and wellness support
- Case management services
- Community partnerships and outreach



Understanding Sponsor A Child (SAC)

Vertical: Programs

Purpose of the Course:

To build a clear understanding of the Sponsor A Child (SAC) program and its role in supporting children's education.

What Learners Will Gain:

Learners will understand the SAC structure, sponsorship workflow, donor engagement process, and compliance expectations, enabling them to support and promote the program effectively.

Key Coverage:

- Purpose and impact of SAC
- 8-step sponsorship process
- Donor communication and engagement
- Monitoring and compliance requirements
- Program outcomes and impact



SHE Program

Vertical: Programs

Purpose of the Course:

To introduce Sewa's Sanitation, Hygiene, and Empowerment (SHE) initiatives focused on improving the well-being of women and girls.

What Learners Will Gain:

Learners will understand the key challenges addressed by SHE and how its initiatives in sanitation, menstrual hygiene, and skill development create long-term community impact.

Key Coverage:

- Sanitation and hygiene initiatives
- Menstrual health awareness
- Skill development and livelihood support
- Community engagement activities
- Program growth and impact



Doctors for Sewa

Vertical: Programs

Purpose of the Course:

To connect medical professionals and volunteers with community-based and international health initiatives.

What Learners Will Gain:

Learners will understand the structure of Doctors for Sewa, including clinics, health fairs, international missions, and mentoring initiatives.

Key Coverage:

- Free medical clinics and health fairs
- International medical outreach
- EVOLVE mentoring program
- Volunteer participation and coordination



Introduction to LEAD

Vertical: Programs

Purpose of the Course:

To introduce the LEAD leadership development program designed to inspire socially responsible high school students.

What Learners Will Gain:

Learners will understand the structure of LEAD, its values-based leadership model, and how mentorship and action projects help students build confidence, character, and community impact.

Key Coverage:

- LEAD program framework
- Leadership values and development
- Mentorship and coaching model
- Community action projects



VERTICAL: MARKETING AND PR

Government Relations: Understanding of U.S. Government

Vertical: Marketing and PR

Purpose of the Course:

To provide foundational knowledge of the U.S. governance system and its relevance to nonprofit engagement and advocacy.

What Learners Will Gain:

Learners will understand federal, state, and local government structures, public engagement mechanisms, and how nonprofits interact with government institutions.

Key Coverage:

- Structure of U.S. government
- Separation of powers
- Federal, state, and local roles
- Nonprofit sector and grant systems
- Policy advocacy and outreach tools



CLICK
HERE



Crisis Management and Communication

Vertical: Marketing and PR

Purpose of the Course:

To prepare teams to respond to crises with clarity, coordination, and strategic communication.

What Learners Will Gain:

Learners will gain practical tools for identifying crises, managing internal and external communication, and safeguarding organizational reputation during challenging situations.

Key Coverage:

- Types of crises and risk awareness
- Crisis response planning
- Internal coordination
- External communication and media handling
- Trust-building and recovery strategies



CLICK
HERE



Media Engagement

Vertical: Marketing and PR

Purpose of the Course:

To provide structured guidance on professional media interaction and public communication.

What Learners Will Gain:

Learners will understand how to build relationships with journalists, craft effective press releases, and maintain consistent organizational branding across media platforms.

Key Coverage:

- Media relationship building
- Press release writing
- Branding and communication standards
- Copyright compliance
- Social media best practices



CLICK HERE 



Introduction to Public Relations, Government Relations, and Lawyers for Sewa

Vertical: Marketing and PR

Purpose of the Course:

To provide a structured understanding of Public Relations (PR), Government Relations (GR), and legal affairs within Sewa International USA and the nonprofit sector.

What Learners Will Gain:

Learners will understand how Sewa integrates media outreach, government engagement, and legal support through the Lawyers for Sewa initiative. They will gain clarity on advocacy strategies, policy engagement, legal compliance, and structured communication practices that strengthen outreach and organizational impact.

Key Coverage:

- Overview of PR, GR, and legal functions
- Media relations and public communication
- Government engagement and policy advocacy
- Legal support and compliance frameworks
- Lawyers for Sewa initiative
- Coordinated systems for outreach and governance



CLICK HERE 



Sewa USA Marketing and Communications

Vertical: Marketing and PR

Purpose of the Course:

To equip volunteers and chapter leaders with the knowledge and tools to represent Sewa effectively through consistent and value-driven communication.

What Learners Will Gain:

Learners will understand marketing fundamentals, campaign planning, and storytelling while gaining practical skills in digital outreach, brand consistency, and communication strategies aligned with Sewa's values.

Key Coverage:

- Marketing fundamentals and audience targeting
- Digital campaigns and communication channels
- Storytelling and brand positioning
- AI Engine Optimization (AEO) basics
- Marketing collateral and brand guidelines
- Marketing work intake and coordination process



CLICK HERE 



VERTICAL: IT

Basics of Information Technology

Vertical: IT

Purpose of the Course:

To equip all karyakartas with essential digital skills and foundational IT knowledge required to support Sewa's platforms, systems, and operational needs.

What Learners Will Gain:

Learners will develop a practical understanding of computer fundamentals, secure use of digital platforms, and responsible data management. The course also builds confidence in using productivity tools and handling basic technical issues effectively.

Key Coverage:

- Computer and internet fundamentals
- Office productivity and collaboration tools
- Website and platform management basics
- Data security and access best practices
- Social media usage guidelines
- Basic IT troubleshooting techniques



CLICK HERE 



VERTICAL: ORGANIZATION

Introduction to Organization

Vertical: Organization

Purpose of the Course:

To introduce the strategic role of the Organization Team in driving chapter growth and operational excellence.

What Learners Will Gain:

Learners will understand how the Organization Team supports chapter expansion, strengthens volunteer engagement, and ensures consistent systems and processes across chapters.

Key Coverage:

- Organization Team structure and mandate
- Chapter development strategies
- Volunteer onboarding and retention
- Coordination tools and operational systems



CLICK HERE

Sewa Chapter

Vertical: Organization

Purpose of the Course:

To provide a practical guide to forming and developing a sustainable Sewa International chapter.

What Learners Will Gain:

Learners will understand the process of starting a chapter, required prerequisites, growth stages, and alignment with Sewa's mission.

Key Coverage:

- Chapter formation steps
- Core team setup and engagement
- Growth stages (Starter, Mid-level, Mature)
- Common Minimum Program (CMP)
- Sustainable chapter operations



CLICK HERE



Sewa Chapter Structure

Vertical: Organization

Purpose of the Course:

To define the structure, leadership roles, and functional responsibilities within a Sewa chapter.

What Learners Will Gain:

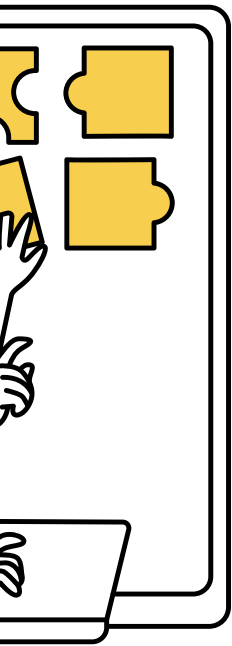
Learners will understand chapter hierarchy, leadership accountability, and how core functions and project teams work together to ensure effective chapter operations.

Key Coverage:

- Chapter leadership and governance structure
- Roles of President, Coordinator, Core Team, Advisors
- Functional areas: Events, Media, Volunteers, IT
- Project and grants coordination



CLICK HERE



VERTICAL: FINANCE

Budgetary Process

Vertical: Finance

Purpose of the Course:

To introduce budgeting as a structured approach to financial planning, accountability, and mission alignment within Sewa International USA.

What Learners Will Gain:

Learners will understand how to develop and manage budgets aligned with chapter goals, apply zero-based budgeting principles, and monitor financial performance effectively.

Key Coverage:

- Purpose and importance of budgeting
- Zero-Based Budgeting (ZBB)
- SMART goal alignment
- Budget structure and cost centers
- Monitoring and financial accountability



Sewa Expense Reimbursement Policy

Vertical: Finance

Purpose of the Course:

To provide clear guidance on Sewa's expense reimbursement policy, ensuring proper documentation, compliance, and responsible financial practices.

What Learners Will Gain:

Learners will understand eligible expense categories, reimbursement procedures, and documentation requirements.

Key Coverage:

- Purpose and scope of reimbursement policy
- Eligible expense categories
- Documentation and submission process
- Approval workflows and timelines
- Mileage and business meal guidelines



Donation Fundamentals

Vertical: Finance

Purpose of the Course:

To build a clear understanding of donation principles, ensuring ethical and compliant handling of contributions.

What Learners Will Gain:

Learners will understand donation types, donor intent, and basic processing guidelines while ensuring transparency and compliance.

Key Coverage:

- Types of donations
- Restricted vs unrestricted funds
- Donation processing basics
- Compliance and documentation
- Donor stewardship



VERTICAL: PHILANTHROPY

Deep Dive: Grant Submission & Lifecycle

Vertical: Philanthropy

Purpose of the Course:

To provide a structured understanding of the end-to-end grant submission and lifecycle process at Sewa International.

What Learners Will Gain:

Learners will understand how grants progress from opportunity identification to proposal development, submission, and post-award implementation. They will gain clarity on roles, SOPs, and compliance requirements across teams.

Key Coverage:

- Grant lifecycle overview
- Proposal development and submission process
- Roles and cross-team coordination
- Compliance and SOP guidelines
- Budgeting and post-award management



CLICK HERE 



Deep Dive: Post-Grant Award Handover and Program Implementation

Vertical: Philanthropy

Purpose of the Course:

To provide a structured understanding of the post-grant award process and program implementation SOP at Sewa International USA.

What Learners Will Gain:

Learners will understand the transition from grant award to program execution, including roles, approval workflows, compliance requirements, and monitoring processes. They will gain clarity on managing grants effectively while ensuring accountability and audit readiness.

Key Coverage:

- Post-award handover process
- Roles and team responsibilities
- Approval workflows and compliance requirements
- Financial oversight and documentation
- Performance monitoring and reporting
- Risk management and escalation



CLICK HERE 

Donor Relations and Management

Vertical: Philanthropy

Purpose of the Course:

Learn how to build strong donor relationships, manage donor data effectively, and practice ethical fundraising. This course helps you engage donors personally, understand giving patterns, and strengthen outreach across chapters.

What Learners Will Gain:

This course covers key strategies for donor engagement, segmentation, and retention. It also introduces donor data analysis, impact reporting, and collaboration across teams to enhance long-term fundraising success.



CLICK HERE 

Fundraising Essentials

Vertical: Philanthropy

Purpose of the Course:

To build core fundraising skills through structured donor engagement and strategy.

What Learners Will Gain:

Learners will understand donor behavior, apply engagement strategies, and strengthen sustainable fundraising practices.

Key Coverage:

- Donor research and identification
- Engagement and relationship building
- Asking and stewardship strategies
- Common fundraising mistakes
- Revenue sustainability



CLICK HERE



Grants Management

Vertical: Philanthropy

Purpose of the Course:

To provide structured knowledge of managing grant-funded projects from initiation to reporting and compliance.

What Learners Will Gain:

Learners will understand the grants lifecycle, stakeholder roles, compliance requirements, and reporting standards to ensure proper fund utilization.

Key Coverage:

- Grants lifecycle
- Roles and responsibilities
- Compliance and due diligence
- Fund monitoring
- Reporting standards



CLICK HERE



Basics: Sewa Grants Opportunities

Vertical: Philanthropy

Purpose of the Course:

To introduce the fundamentals of identifying and applying for grant opportunities.

What Learners Will Gain:

Learners will gain foundational knowledge of grant research, funder engagement, and basic proposal writing.

Key Coverage:

- Introduction to grants
- Identifying funding opportunities
- Funder relationship building
- Basics of grant writing
- Key proposal components



CLICK HERE

02

Sewa Academy – USA Lead_Portal

A dedicated learning portal for LEAD students across all USA chapters, designed to nurture values-based leadership and personal growth. It provides structured program guidance, mentorship support, and practical learning resources that help students build confidence, character, and a strong sense of social responsibility.



1000+

Active Learners



3

Structured Courses



3500+

Learning Hours



400+

Certificates issued



Ready To Lead (RTL) – Sewa Paramo Dharma

Purpose of the Course:

To introduce young learners to the philosophy and practice of Sewa while building a foundation for compassionate, service-oriented leadership.

What Learners Will Gain:

Learners will understand the meaning of selfless service and develop leadership skills through empathy and responsibility. Through a Discover–Develop–Deliver journey, participants build awareness of community needs, strengthen problem-solving skills, and complete a guided service activity with reflection.

Key Coverage:

- Meaning and philosophy of Sewa
- Empathy and social awareness
- Leadership through service
- Community-based action project
- Reflection and values-based growth



Design to Lead (DTL)

Purpose of the Course:

To equip LEAD volunteers with creative problem-solving skills to address real social challenges in their communities.

What Learners Will Gain:

Learners will apply design-thinking principles to empathize with communities, define core issues, ideate innovative solutions, and test practical applications. The course fosters collaboration, empathy, and critical thinking for meaningful social impact.

Key Coverage:

- Empathy and community understanding
- Problem definition and analysis
- Ideation and innovative thinking
- Prototyping and testing solutions
- Real-world application and impact



VANI – The Sewa LEADership Journey

Purpose of the Course:

To provide a structured 8-week leadership and communication curriculum for youth aligned with Sewa's core values.

What Learners Will Gain:

Learners will develop leadership principles, public speaking confidence, ethical decision-making skills, and teamwork abilities. The program ensures a consistent leadership foundation across all groups through guided reflection and real-world application.

Key Coverage:

- Leadership principles
- Public speaking and communication
- Ethical decision-making
- Team-based project work
- Reflection and real-world application



03

Sewa Academy – SIB_Portal

Designed for employees and fellows of Sewa International Bharat (SIB), this portal provides comprehensive training for Sewa Fellowship students and SIB team members. It supports professional development, program implementation skills, and alignment with organizational standards and service values.



150+

Active Learners



2

Structured Courses



300+

Learning Hours



100+

Certificates issued



PoSH Training – Prevention of Sexual Harassment

Purpose of the Course:

To provide comprehensive awareness of the Prevention of Sexual Harassment (PoSH) Act, 2013 and promote safe, respectful, and inclusive workplaces through legal compliance and responsible conduct.

What Learners Will Gain:

Learners will understand the scope and importance of the PoSH Act, identify inappropriate workplace behavior, and respond appropriately to harassment concerns. The course builds awareness of complaint redressal mechanisms, confidentiality standards, and the role of the Internal Complaints Committee (ICC), ensuring legal and ethical compliance.

Key Coverage:

- Recognizing and preventing workplace harassment
- Legal responsibilities of employees and leaders
- Complaint redressal process and safeguards
- Role of the Internal Complaints Committee (ICC)
- Digital workplace conduct and reporting protocols
- Overview and scope of the PoSH Act, 2013



CLICK
HERE



पाँश (PoSH) प्रशिक्षण - यौन उत्पीड़न की रोकथाम

PoSH अधिनियम जागरूकता और अनुपालन प्रशिक्षण कर्मचारियों, प्रबंधकों और नेताओं को कार्यस्थल पर महिलाओं के यौन उत्पीड़न की रोकथाम अधिनियम, 2013 के बारे में शिक्षित करने के लिए बनाया गया है। यह व्यापक कार्यक्रम कानूनी जागरूकता को व्यावहारिक समझ के साथ जोड़कर सम्मान, समानता और जवाबदेही की कार्यस्थल संस्कृति को बढ़ावा देता है।

प्रतिभागी विभिन्न प्रमुख मॉड्यूल का अध्ययन करते हैं, जिनमें शामिल हैं:

- PoSH का महत्व और दायरा
- कानूनी ढांचा और व्यक्तिगत/संगठनात्मक ज़िम्मेदारियाँ
- शिकायत निवारण उपाय
- सुरक्षा उपाय और आंतरिक शिकायत समिति (ICC) की भूमिका

इंटरैक्टिव उदाहरण और केस स्टडीज़ प्रतिभागियों को अनुचित व्यवहार की पहचान करने, उचित प्रतिक्रिया देने और ज़रूरतमंद सहकर्मियों का समर्थन करने में सक्षम बनाती हैं।

यह पाठ्यक्रम डिजिटल युग के कार्यस्थल आचरण, गोपनीयता और रिपोर्टिंग प्रोटोकॉल पर विशेष जोर देता है। निवारक उपायों और अनुपालन संबंधी कर्तव्यों को समझकर कर्मचारी सुरक्षित कार्यस्थल वातावरण बनाने में योगदान देते हैं और अपने संगठन के कानूनी व नैतिक मानकों को बनाए रखते हैं।



CLICK
HERE



04

Sewa Academy – Executing Partners_Portal

Portal for project implementing partner organizations of Sewa International USA

This portal supports compliance, reporting accuracy, and financial accountability for partner organizations implementing Sewa-supported projects.

Courses Available:

Project Impact Report (PIR)

Guides partners in completing the standardized section PIR framework, including beneficiary reporting, SMART outcomes, and impact documentation aligned with Sewa USA standards.

Grant Utilization Report (GUR)

Explains the process for preparing and submitting compliant utilization reports, covering financial reporting, workflow, and audit expectations.

05

Sewa Academy – Sewa Bridge_Portal

Designed for employees and partners of Sewa Bridge

This portal supports organizational compliance, workplace ethics, and professional conduct for Sewa Bridge teams and partners.

Course Available:

PoSH Training – Prevention of Sexual Harassment:

A comprehensive awareness course on the Prevention of Sexual Harassment and PoSH Act, 2013. It covers legal responsibilities, complaint redressal mechanisms, Internal Complaints Committee (ICC) processes, confidentiality standards, and preventive measures to ensure safe and respectful workplaces.



Learn. Serve. Grow.

Building Capability, Strengthening Service.

Sewa Academy stands as a living ecosystem of knowledge, service, and collective growth. What began as a structured training initiative has evolved into a unified learning platform that empowers volunteers, leaders, employees, and partners across multiple geographies.

With 36 comprehensive courses delivered through 5 dedicated portals, the Academy continues to strengthen organizational capability and helps in preserving Sewa's core values of selfless service, accountability, and compassion. Every course reflects a commitment to clarity, excellence, and mission alignment—ensuring that knowledge is not only learned, but practiced.

Through structured learning, certification, and cross-vertical collaboration, Sewa Academy equips every karyakarta to serve with confidence, competence, and integrity.

As we move forward, our focus remains on expanding learning opportunities, deepening subject expertise, and strengthening systems that support impactful service.

Together, we build capacity.
Together, we strengthen service.
Together, we uphold the spirit of Sewa.





Download the ZOHU LEARN MOBILE APP

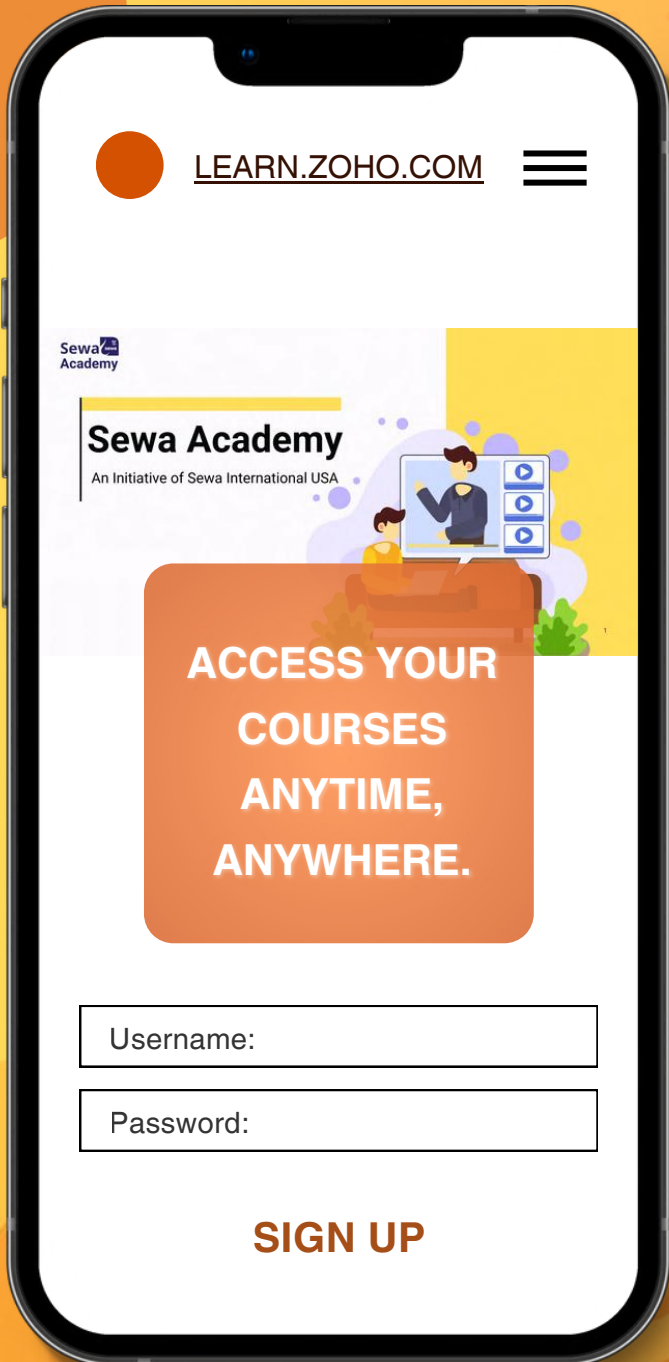
Enhance Your Learning Experience of Sewa Academy!

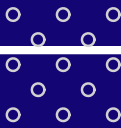
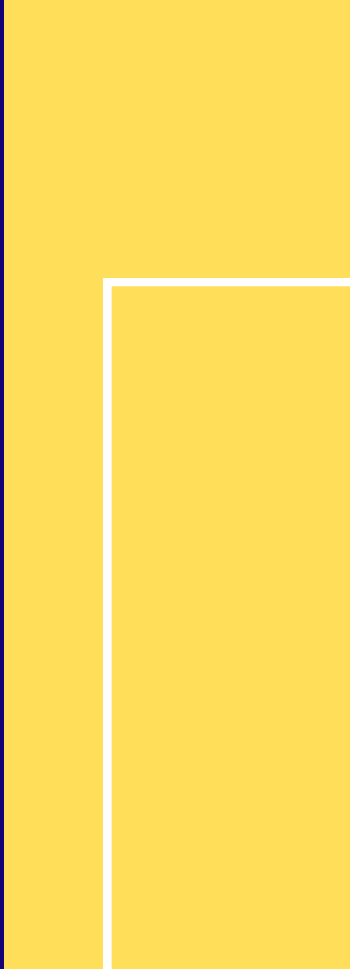
[DOWNLOAD NOW](#)

ZOHU LEARN - ANDROID



ZOHU LEARN - IOS





SEWA ACADEMY

COURSE CATALOG 2025-26

Email: team_academy@sewausea.org



Sewa International, USA

P.O. Box 820867, Houston, TX 77282-0867, Tax ID: 20-0638718
info@sewausea.org, 708-USA-SEWA, www.sewausea.org

