

# Winchelsea Star

Price \$1

Your Weekly Community Newspaper

Since 1977

Vol 47 Ed 17

Tuesday 7 May 2024

winchelseastar.org.au



Winchelsea has been chosen as a beacon of hope and preparedness in the fight against sudden cardiac arrest

Ambulance Victoria has selected our town to participate in the esteemed Heart Safe program. More p. 11



# Winchelsea Star COMMUNITY NOTICEBOARD

editor@winchelseastar.org.au or  
leave at Winchelsea IGA

## PICKLEBALL AT THE LTC

Wednesday evenings 7.00-8.30 &  
Thursday mornings 10.00-11.30

\$5 pp. [to cover LTC hire]

All equipment supplied,  
just wear suitable footwear.

Lesley Mathison 0438672197

## WINCHELSEA TENNIS CLUB

### JUNIOR COACHING

Mondays from 3.30pm  
with experienced Nicole Mullen, \$10

### SOCIAL TWILIGHT TENNIS

Monday evenings from 6.00pm.

All Welcome!

## WINCHELSEA LIONS CLUB

Planning Christmas in July?

Winchelsea Lions have

Large cakes \$20 Small cakes \$16

Puddings \$16

Contact Raymond

0406 371 239

## COUNCIL BUDGET PAPERS

There is a hard copy of the  
Surf Coast Council budget papers  
for the 2024/2025 year  
at Winch House.

This copy is available for  
anyone to come in and read.

Jill Evans

## FOR SALE

**A ladies first car**

HS auto, white Magna,  
with tinted windows.

Rego but no roadworthy, \$500

Contact Kaye after 6pm. 52672954.

## FOR SALE

**Masport**

**multifeature**

**Quantum XTS 60**

Pull start mower with  
mulch feature &  
adjustable handling  
with catcher.

Just had service  
excellent condition.

\$55 ONO

0439 728 128

# Winchelsea Star Since 1977

send your stories  
[news@winchelseastar.org.au](mailto:news@winchelseastar.org.au)

## LOCALNEWS and ARTICLES WELCOME

Include name and address of the sender  
Email [news@winchelseastar.org.au](mailto:news@winchelseastar.org.au)  
Leave hard copy at IGA Supermarket

### DEADLINE 5pm Fridays

4pm Sundays - hard copy articles left at IGA

6pm Sundays - sports results and weekend events

## ADVERTISING

[advertising@winchelseastar.org.au](mailto:advertising@winchelseastar.org.au) 0408 102 802

## free digital subscription

[winchelseastar.org.au](http://winchelseastar.org.au)

## FOLLOW US ONLINE

[winchelseastar.org.au](http://winchelseastar.org.au)

## FACEBOOK

[facebook.com/TheWinchelseaStar](https://facebook.com/TheWinchelseaStar)

## production

**Editors:** Cerrie Fogan, Yvonne Stevens, Judy Cameron

**Advertising:** Sasha Gauntlett, Neil McInnes

**Design:** Tony Phelps, Susan Corby

**Printing:** Winchelsea Community House

**Website:** Winch Websites

## committee

**President:** [president@winchelseastar.org.au](mailto:president@winchelseastar.org.au)  
Mick O'Mara

**Treasurer:** [treasurer@winchelseastar.org.au](mailto:treasurer@winchelseastar.org.au)  
Cathy Cheadle

**Secretary:** [secretary@winchelseastar.org.au](mailto:secretary@winchelseastar.org.au)  
Tony Phelps

**Members:** Linda Carter, Sasha Gauntlett,  
Neil McInnes, Judy Cameron,  
Yvonne Stevens, Cerrie Forgan,

© Winchelsea Star Org. Inc. All rights reserved  
Winchelsea Star Organisation Inc.  
Reg. No. A0053999F ABN 75 941 529 279  
[winchelseastar.org.au](http://winchelseastar.org.au) PO Box 5 Winchelsea 3241  
Views expressed are not necessarily those  
of the Winchelsea Star or its Committee.  
The Winchelsea Star reserves the right  
to edit or not publish any article.







# Winchelsea Market, Sunday 5 May

Judy Cameron

It was a bit quieter at the May Market, but we were competing with Moriac's once-a-year Mother's Day Market.



The organisers were doing their bit for the environment with bags for reuse:



Judy and son Josh of Goddard's Providores were there with their wonderful olive products.

NOTE: "The average price of olive oil jumped by 100 per cent from 2021 to 2024 because of the drought and fires in Europe. Australian olive oil is also in short supply due to a poor fruit harvest the previous season, which is driving the prices up along with the Mediterranean shortage." So stock up!

Josh is off to chef in the snow fields but he can still arrange for you to get supplies phone 0488 559 983 or email [goddardsprovidores@gmail.com](mailto:goddardsprovidores@gmail.com)



Local resident Alison Deans showed off her new business in her caravan Smooth Vibes. "It is all about seasonal, local and fresh food. We make slow pressed juices, smoothies, soup and healthy sweet treats. We also have some sweet tunes playing."



L-R: Bill Walters, Ray King, Clyde Stephenson

A Men's Shed team were on duty with a sausage sizzle fundraiser.

More members are welcomed at the Shed and it is open on Wednesdays from 10am and 2pm. The team are available to do repair jobs there (NOT off site) for furniture for example – or perhaps you could employ them to make a special letter box or a bird box. Contact Bill on 0438 083 373 for more information.

(There are over 1200 Men's Sheds around Australia providing company, an opportunity to make friends and learn new skills).



Jim (0493 971 334) loaded up his car in Newtown with plants from his Willows Garden Oasis nursery to offer buyers at the Market. Google his business and please support your local nurseries.

(The nursery growers' industry body has called for Bunnings and other major stores like Mitre 10 and Ikea to be included in the Food and Grocery Code of Conduct because of unfair trading practices similar to major supermarkets.)



Locals Craig and Robyn Tucker were there with their Dog Stinger Honey products.

They are going to take the winter off from markets but you can get your supplies in the meantime from their home in Barkly Street by prior arrangement through [robbotuck63@gmail.com](mailto:robbotuck63@gmail.com) or phone 0478 525 772.

The Tuckers will also rehome bees from swarms or established hives.



# Draft 2024-25 Budget

You are invited to make a submission on Council's draft 2024-25 budget



## FAST FACTS

Community groups supported via small grants:

**50**

Child and Family Health infant enrolments:

**403**

Library memberships:

**11,000**

Childhood and school immunisations:

**1,700**

Volunteers supported:

**219**

Customer requests:

**45,000**

Playgrounds maintained:

**58**

Dog and cat registrations:

**7,608**

Food premises inspections:

**600**

Kilometres of gravel roads graded:

**1,430**

Australian National Surfing Museum visitors:

**17,000**

Households receiving kerbside waste services:

**21,338**

## NOT ABLE TO ACCESS THE INTERNET?

A printed copy of the draft 2024-25 budget can be viewed at Winchelsea Shire Hall - 28 Hesse Street.

A relevant section can be posted on request. Please call **5261 0600**.

## Mayor's message

*"With a strong focus on our core services and investing in key facilities, our 2024-25 Budget tackles today's needs while working towards a sustainable future.*

*An ambitious \$52.4m capital expenditure program lays the foundation for this budget. Across our local roads and footpaths network, we are allocating more than \$13 million to make it easier and safer for people to move in and around their communities.*

*Council is also committed to protecting and enhancing our world-class natural environment, so the coast and hinterland can be enjoyed by many generations to come."*

Mayor Cr Liz Pattison

## Winchelsea Pool progresses

**The Winchelsea Pool redevelopment is taking shape at Barwon River Reserve.**

The pool spearheads the capital works program in the draft 2024-25 budget, with Council planning to spend \$5.37m to complete the \$8.5m project.

Community members might have noticed that works are progressing at the site.

The former pool has been demolished, with more than 95% of materials to be recycled.

Following excavation, the shape of the new pools are now visible.

Construction of the replacement 25-metre and leisure pools and a new zero-depth splash park will start early May, while construction of the pavilion will start late May.

The Winchelsea Pool redevelopment is set to open early 2025, ready for some summer fun.

The new facility aligns with our goal of a healthy, connected community.



To view the draft 2024-25 budget, visit [yoursay.surfcoast.vic.gov.au/budget](https://yoursay.surfcoast.vic.gov.au/budget)

### HOW TO MAKE A SUBMISSION:

Online: [yoursay.surfcoast.vic.gov.au/budget](https://yoursay.surfcoast.vic.gov.au/budget)

Write to: Chief Executive Officer, PO Box 350 Torquay VIC 3228

**SUBMISSIONS MUST BE RECEIVED BY 10AM ON MONDAY 20 MAY 2024**

Anyone making a submission can request to present to Council at a hearing of submissions, which will take place online at 6pm on Tuesday 4 June 2024.

### KEY DATES:

- **23 APRIL 2024**  
Draft 2024-25 budget endorsed for public exhibition
- **20 MAY 2024**  
Submissions close at 10am
- **4 JUNE 2024**  
Online hearing of submissions at 6pm
- **25 JUNE 2024**  
Council to consider final 2024-25 budget



## Roads and footpaths a focus in draft budget

**Council wants to increase liveability in its towns by making it safer for people to move around.**

We're working towards this goal in the draft 2024-25 budget, highlighted by more than \$1m for road and footpath upgrades in the Winchelsea Ward.

It consists of \$45,000 for footpath renewal, \$432,000 for sealed road renewal, and \$571,000 for unsealed road renewal.

Sections of footpaths to be renewed include Hesse Street and Willis Street in Winchelsea town centre.

Looking across the ward, sections of Flaxbournes Road and Atkins Road headline the sealed road renewal, while Barrabool's Wedgetail Lane is among the unsealed roads to be renewed.

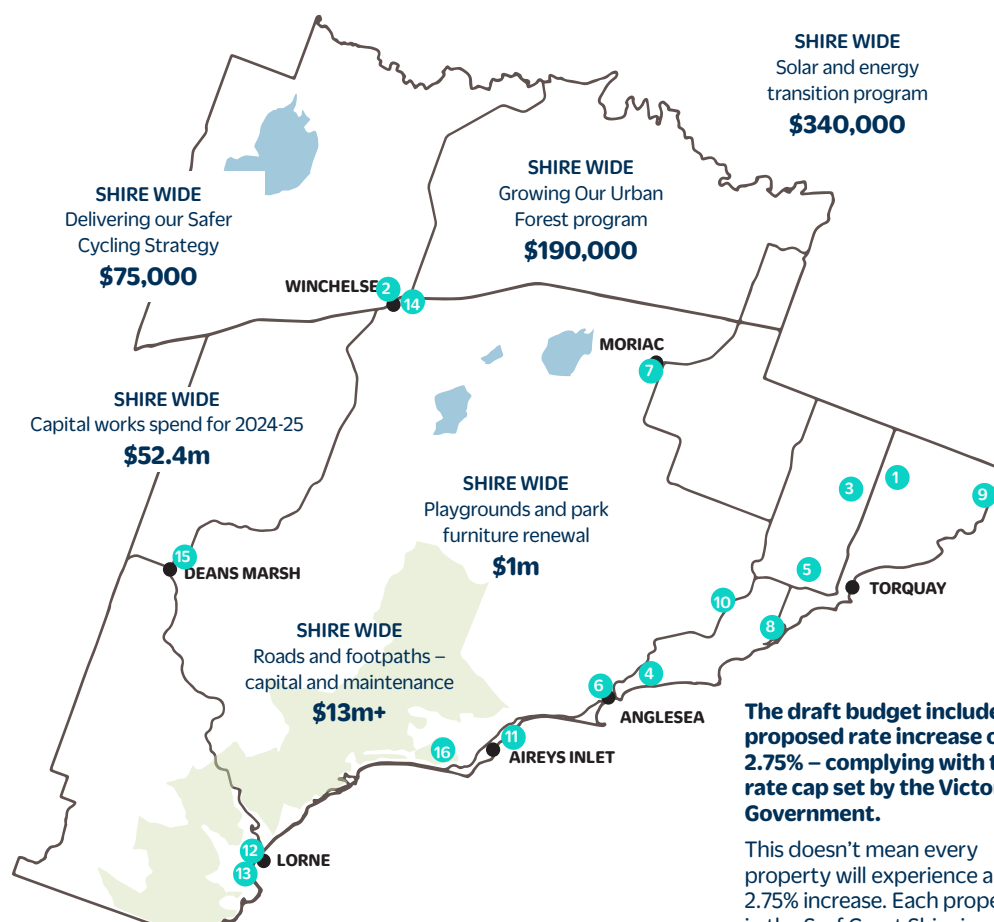


As part of the Winchelsea Structure Plan, design for the upgrade of Batson Street will be completed.

Thank you to the community members who recently provided input as part of the Unsealed Road Review. It will help provide options to understand how we best invest in our unsealed road network.

## A snapshot of projects and initiatives in the draft 2024-25 budget

- 1 Surf Coast Aquatic and Health Centre (total project \$46m) **\$42.8m**
- 2 Winchelsea Swimming Pool redevelopment (total project \$8.5m) **\$5.37m**
- 3 Widening of Coombes Road from Ghazepoore Road to Messmate Road **\$2.2m**
- 4 Anglesea netball courts reconstruction, including drainage and fencing improvements **\$1.3m**
- 5 Great Ocean Road regional bike route from Duffield Road to Strathmore Drive **\$489,410**
- 6 Anglesea Community and Health Hub planning and design **\$250,000**
- 7 Moriac's Newling Reserve playground renewal **\$248,200**
- 8 Bob Pettitt Reserve tennis court renewal **\$200,000**
- 9 Karaaf Wetlands stormwater management **\$100,000**
- 10 Sealed road renewal – Forest Road from Flaxbournes Road to Gundrys Road **\$89,000**



- 11 Aireys Inlet top shops beautification project **\$70,000**
- 12 Major event support – 2025 UCI Gran Fondo World Championships **\$50,000**
- 13 Lorne Sculpture Biennale – event support **\$30,000**
- 14 Winchelsea Shire Hall management support **\$27,500**
- 15 Unsealed road renewal – Railway Terrace, Deans Marsh **\$20,000**
- 16 Footpath renewal – Boolooral Reserve **\$16,000**

**The draft budget includes a proposed rate increase of 2.75% – complying with the rate cap set by the Victorian Government.**

This doesn't mean every property will experience a 2.75% increase. Each property in the Surf Coast Shire is revalued every year by independent professional valuers.

Across the shire, the average rate increase will be 2.75% - well below current inflation levels.

We understand that many residents are experiencing financial pressures. If you are, please reach out to us as we have rates payment plans.



# Anywhere. Anytime. Anyone.

Police are out there to keep you safe. If you still choose to take risks while driving and break the road rules, chances are you will be caught.





# Winchelsea selected for Heart Safe Initiative

## Kelly Turner

Winchelsea has been chosen as a beacon of hope and preparedness in the fight against sudden cardiac arrest (SCA). Thanks to Kelly's tireless efforts at the Winchelsea Bendigo Bank, Ambulance Victoria has selected our town to participate in the esteemed Heart Safe program.

What does this mean for Winchelsea? It signifies a proactive step towards equipping ourselves with the knowledge and skills necessary to confront emergencies head-on. The Heart Safe initiative centers on spreading awareness and educating the populace on the pivotal 3-Steps to Help Save a Life during an SCA Out-of-Hospital.

But it doesn't stop there. Winchelsea is rallying its resources and community spirit to ensure widespread preparedness. Teaming up with the Winchelsea Community Bank, we're proud to announce a series of defibrillator (defib) classes scheduled.

Here's where you can join us:



- Winchelsea Bowls Club  
Wednesday, May 8th at 10 am
- Winchelsea Community House  
Monday, May 13th at 10 am  
Monday, May 20th at 3:30 pm
- Eastern Reserve – The Hub  
Thursday, May 16th at 4:30 pm

These sessions aren't just about learning CPR or how to operate a defibrillator. They represent a collective commitment to safeguarding each other's well-being, a promise to be there when seconds count the most.

So, Winchelsea, let's rise to the occasion. Let's arm ourselves with the tools and knowledge needed to be true lifesavers. Spread the word, mark your calendars, and let's make Winchelsea a shining example of community resilience and strength.

See you there, ready to make a difference!



Thanks to the Men's shed for installing the new units at Eastern Reserve and Winchelsea Primary School

## Winchelsea Community House Inc. A6247K

28 Hesse Street, PO BOX 75, WINCHELSEA, Vic. 3241

Phone: (03) 5267 2028 Email: [reception@winchhouse.org.au](mailto:reception@winchhouse.org.au)

ABN: 48 932 340 254

**OCCASIONAL CHILDCARE**  
VACANCIES ARE AVAILABLE ON  
WEDNESDAYS, THURSDAYS AND FRIDAYS  
3 YEAR OLD TO 5 YEAR OLD CHILDREN.

OUR SERVICE OPERATES  
FROM 9AM TO 2PM  
FOR 48 WEEKS OF THE YEAR

TO ENQUIRE OR REGISTER  
PLEASE CONTACT US

## What to do after a bushfire

Visit our webpage for technical information about fire recovery including advice on:

- water quality
- feed management
- animal health and nutrition.

AGRICULTURE VICTORIA





## Residential | Rural Lifestyle | Agricultural Farms

### Winchelsea ~ Star

Vale

Mrs Jenny Bowker

The Winchelsea Star sincerely apologises to the family for the incorrect spelling of the surname of Mrs Jenny Bowker in last week's issue.



#### Casuarina Counselling Therapy

*Slow, Connect, Breathe, Grow*

Counselling and holistic integrated therapy to help find clarity, understanding and new ways to live a healthy and joyful life.

Help with:

- Anxiety • Depression • Grief • Addiction • Low self esteem
- Disordered eating • Emotional concerns • Relationship issues

Costs are \$80 concession and \$120 full

Now available on Tuesdays at The Exchange, 38 Main Rd, Winchelsea (next to the Winchelsea Medical Centre).

Contact Mel on 0493988150 for more information or to book an appointment.

Charles Stewart & Company are leading livestock and real estate service providers covering Victoria's south west

Office  
56 Bromfield Street, Colac  
www.charlesstewart.com.au



CHARLES STEWART  
rma network Accredited Member

#### LIVESTOCK

Jamie McConachy	0418 522879
Peter McConachy	0408 522878
Matt Nelson	0428 315400
Gerard Bohan	0400 005541
Lachie Barclay	0438 346291
John Thornton	0408 526367
Dougal McIntyre	0439 575612
Ross Spitty	0419 539717



#### REAL ESTATE

Michael Stewart	0418 520467
Daryl Osborne	0419 388341
Anthony McDonald	0418 593597
Gerard Bohan	0400 005541
Stephen Lugg	0417 556098
Josh Lamanna	0417 586032



## Yes! YOU can write for the Star

We want the Star to inform, engage, inspire, and interest the residents of Winchelsea and surrounds. And we need your writings to get there.

The Star has no actual reporters or designated writers - we publish what you send us. If you have some news, an opinion, an interest or perspective, or a story - we'd love you to send it in for publication.

The Star loves to hear anything of direct interest to the Winchelsea community. The more local content we can put in, the better!

#### How much can I write?

You can write just one article. You can start a new column about something you're interested in. You can send us a series of articles on a theme. What would **you** write about?

Your article can spread over 1 or 2 pages (approx 850 words) or you can write longer pieces and split them across multiple editions.

Add a photo or two, an article title and author's name (preferably).

#### Can you publish my photos?

A picture is worth a thousand words - but context is very

GET YOUR  
**FREE**  
digital subscription  
today!

[winchelseastar.org.au](http://winchelseastar.org.au)

interesting too! If you have a photo you'd like in the Star, add a few words describing where, when, who, why and/or what.

#### Ask permission to use photos

When you send us a photo, you give us implied permission for reproduction.

You have liability when publishing an image, so be sure you own the image or have written approval to use it. It is easy for copyright owners to find stolen images online, where the Star can be found.

#### Legalities

Our Editors will not approve anything libellous (ie. when a false statement is published in written form and does harm to a victim). The Star is a community newspaper - 'for' and 'against' opinions on contentious topics are welcome, but attacking individuals or groups is not.

We look forward to hearing from you.

Simply email [editor@winchelseastar.org.au](mailto:editor@winchelseastar.org.au)





# parkrun 9

Trebeck Reserve, Winchelsea

Saturday 4 May 2024

This week 35 people completed the course through Trebeck Reserve. Eight people completed their personal best time. Well done everyone who walked, ran or volunteered.

We had visitors from Jell's Park, Bannockburn Bush, Warragal, Portland, Wallaby Track and Perth. One person completed their 100th different parkrun venue this morning.

This event was made possible by the following volunteers.

Ann MORSBY \* Catherine McKEOUGH \*  
Murray AISBETT \* John CAUFIELD  
\* Kate McINNES \* Mick O'MARA  
\* Jane HARDY \* Don SMITH

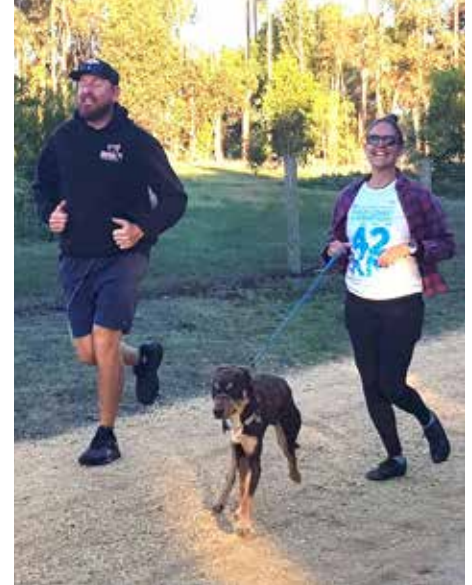
Special thanks to Jane and Catherine who were visiting and volunteered as barcode scanner and photographer.

A summary of this week's results can be found at [trebeckreserveparkrun.com.au/results](http://trebeckreserveparkrun.com.au/results). Check out our Facebook page for today's photos and further information.

It takes a minimum of six people each week to conduct an event. Please email [trebeckreserve@parkrun.com](mailto:trebeckreserve@parkrun.com) if you are able to volunteer some of your time. Tasks are simple, sociable, fun and very much appreciated.

If you wish to join us any Saturday morning as a walker, runner or volunteer please complete the simple online registration at [parkrun.com.au/register](http://parkrun.com.au/register). This only needs to be done once and can be used worldwide.

parkrun was conducted at 487 locations across Australia this week.







# Invitation

## The 2024 Upper Barwon Landcare Dinner & Annual General Meeting

**When** Monday May 27th 2024

**Where** Colac Bowling Club, 35 Moore St Colac

**Program** 6 PM – pre dinner drinks (*drinks available at bar prices*)

6.30 PM – Annual General Meeting

7 PM – Dinner (Fusion catering) with Guest Speaker between courses  
(\$40 a head / pay on registration )

### Guest Speaker: **Silvana Lannello—Speleologist (Cave ecologist)**



Silvana will present her work as a Speleologist and discuss the hidden world of caves within the Corangamite Catchment and what lies beneath. By day, Silvana serves as an Environmental Land Manager in the Corangamite Catchment, but her true passion lies beneath the surface. Since 2009, she has dedicated herself to the study, exploration, and conservation of subterranean ecosystems, with a particular focus on cave crickets and other small cave-dwelling creatures.

Silvana's work has led her to the discovery of a previously unknown cave cricket species in Victoria and the mapping of numerous new caves across Australia. Her work not only expands our scientific knowledge but also demonstrates the importance of preserving these hidden worlds.

Beyond her research, Silvana advocates for cave conservation. Her short film, "Adapted to the Dark," won first prize in Australia's 2021 Year of Caves and Karst Creatives Competition, shedding light on cave crickets and the importance of cave ecosystems to a wider audience. More recently, in 2024, Silvana produced "On the Line: Nullarbor," a film highlighting the significance of the Nullarbor Plain and advocating for its protection against industrialisation giants.

In addition to her caving pursuits, Silvana holds leadership roles in key organisations dedicated to speleology. As Vice President of the Australian Speleological Federation and President of The Australian Cave Animal of the Year project.

This year, 2024, we celebrate the Nullarbor Blind Cave Spider, *Traglodiplura* genus as Australia's Cave Animal of the year.

### Bookings are essential

Please RSVP by the **23rd of May** with any dietary requirements.

Use the booking link or barcode to register.



[https://events.humanitix.com/  
upper-barwon-landcare-agm](https://events.humanitix.com/upper-barwon-landcare-agm)

Any enquires please contact Andrea Montgomery on 0407552663 or

[andrea.upperbarwonlandcare@gmail.com](mailto:andrea.upperbarwonlandcare@gmail.com)

**COMMUNITY MEMBERS WELCOME**





## Council election set for October, candidate information sessions coming up

Election of a new Surf Coast Shire Council will take place later this year, and a range of information sessions will be available for aspiring candidates.

Nine councillors will be elected via postal voting during October, with 26 October election day.

Following the Victorian Government's electoral structure and ward boundary review the shire will be realigned to have three wards. The proposed names for the wards are Otway Range Ward, Torquay Ward and Winchelsea Ward. Each ward will be represented by three councillors.

Candidate nominations will open on 19 September and close at noon on 24 September.

Surf Coast Shire Council is running a series of candidate information sessions for anyone thinking about standing for Council.

Candidate information session:

- Torquay Ward session, Thursday 23 May, 6pm-8pm, St Therese Primary School Hall
- **Winchelsea Ward session, Wednesday 12 June, 6pm-8pm, Eastern Reserve**
- Otway Range Ward session, Monday 24 June, 6pm-8pm, Aireys Inlet Community Centre



These sessions will be delivered by independent facilitator Ruth McGowan OAM. Ruth is a former Councillor and Mayor of Baw Baw Shire who believes that with the right attitude, skills, and experiences, nearly anyone can be a Councillor.

Find out more and register to attend these sessions via [surfcoast.vic.gov.au/Election2024](http://surfcoast.vic.gov.au/Election2024)

The Municipal Association of Victoria and Victorian Electoral Commission will also run information sessions for candidates during coming months, which will be advertised at the above website.

All voting in the election will be by post, via ballot packs sent to all enrolled voters by the VEC.

All state and council-enrolled voters must vote. People with more than one property still get only one vote.

The new Surf Coast Shire Council will be inducted late November.

Pop this in your diary

## Rob Cameron is bringing his 94.7 The Pulse program to the Winchelsea shopping precinct

Monday May 20, 9am to 11am



Listen to some previous shows at <https://947thepulse.com/shows/rob-camersons-front-page/> including March 18th from Inverleigh (Pictured)

Claudette Brennan from Barwon Park will be a guest. Other topics will include the Bendigo Community Bank sponsored retirement living, the wonderful story of success at Knuckey's Winchelsea and what's happening at Winch House.



**WINCHELSEA LIONS CLUB**

**ARE SELLING ENVIRONMENTALLY FRIENDLY SHREDDED PAPER COMPRESSED BRICKS FOR YOUR FIRE**

**SAVE ON THE RISING COST OF WOOD BY INCLUDING PAPER BRICKS AS WELL**

**PACKET OF 4 ROARS (BRICKS) \$5**  
**ROLL OF PURRS (SMALL ROLLS) \$2**

**AVAILABLE AT LIONS PAPER SHED**  
**36 HARDING STREET**  
**SATURDAY MORNINGS**  
**10AM - 12 NOON**  
**FROM 4<sup>TH</sup> MAY UNTIL SOLD OUT**

**EFTPOS AVAILABLE**  
**CASH ACCEPTED**

*direct*  
**TEMPORARY FENCING**

FOR HIRE - SUPPLIED & ERECTED - 7 DAYS  
GEELONG - BELLARINE - COLAC - SURF COAST  
PHONE CAM 0417 310 800

**DownRyte Excavations**

- Excavations
- Drilling and Piling
- Rock Placement
- Tree and Stump Removal

*Sean Hunwick*  
Mobile: 0409 447 288  
Email: downryte@activ8.net.au

**NO MATTER WHAT YOUR PROBLEM, DODDS ELECTRIX CAN DEFUSE THE SITUATION.**

RURAL, INDUSTRIAL, COMMERCIAL DOMESTIC  
PHONE 0438 887 360  
EMAIL: DODDSY@FASTMAIL.FM  
PO BOX 36 BIRREGURRA, VICTORIA 324  
REC: 17520 ABN: 64 581 250 880

**WINCHELSEA CONCRETING**

• Driveways • Sheds • Decorative Concrete • Raft Slabs

**Robert Murphy**  
☎ 0438 235 237  
✉ winchelseaconcreting@outlook.com

**Knuckey's Winchelsea**  
Ph: 5267 2011

Knuckey's have in stock a complete range of batteries to suit tractor, heavy machinery, cars, utes

The largest range of the best oil for your vehicles—**CASTROL**—  
*'when only the best will do'*

The largest range of V belts.  
A, B, C, D M Sections  
Bolts and nuts for all occasions  
Steel cut to size

**Scott McDonald**  
0423 413 829

**S.J.R AUTOMOTIVE**  
ABN 642 493 846 39  
13 ALSOP DRIVE, WINCHELSEA VIC 3241

**DAVIC AG**  
**CONTRACTING AND EARTHMOVING**

For all your harvesting needs  
Mowing, raking, round bailing, paddock prepping, spreading and sowing

Call Dave on **0417 579 973** Bambra

**OZ TREES NURSERY & TREE PLANTING SERVICES**

- Affordable seedlings—over 200 species
- Complete plantation service—farm forestry, shelter, aesthetics
- Deep ripping & mound ploughing. Rotary bed forming
- Our experienced staff will help you select species for your site conditions and needs

Also available—tree planting tools, milk cartons, plastic tree guards & bamboo stakes

569 Warrowie Rd. Colac  
P: 5233 6280 F: 5233 6393  
E: info@oztrees.com.au  
W: www.oztrees.com.au  
Open Monday—Friday  
9am—4:30pm

**Phone OzTrees for professional advice,**

WINCH WEBSITES  
WEB SOLUTIONS SIMPLIFIED.

**WEBSITES**

GROW business  
INCREASE reach  
SAVE time

Find out what a website could do for you  
winchwebsites.com.au  
04 887766 20

**STS ACCOUNTING GROUP**

**Your Taxation & Superannuation Specialists.**

Winchelsea  
**5267 2673**  
www.surftax.com.au



# Deans Marsh Primary

Your School. Your Community.

**Showing Respect, Responsibility  
& Resilience since 1875.**



Zaky, August, Vali & Marley enjoying a break from classroom learning to have fun together in their new play kitchen.

We have had a terrific start to term 2 at Deans Marsh Primary School. Here are some highlights:

- Each class has started working on a new Inquiry unit on our solar system. This includes a special design and construction aerospace project.
- Our new outdoor play kitchen is now in use. This is part of our super shed project, which includes bike storage and a pump for a water play river bed.
- Our Year 5/6s travelled to Colac to learn all about lawn bowls and then compete in an inter-school competition.
- Our Year 6 students all helped run a very respectful Anzac Ceremony at school.

Have a fantastic term!



Students were greeted with a foggy start to the lawn bowls competition at Colac Bowling Club. It was a great day and we want to thank all the volunteers who helped run the training day and competition day. One of our two school teams came second, and as you can see, the day finished in beautiful sunshine.

## Term 2 Key Dates:

**Fri 10<sup>th</sup> May**

**Mon 13<sup>th</sup> May**

**Tue 14<sup>th</sup> May – Wed 22<sup>nd</sup> May**

**Wed 29<sup>th</sup> – 31<sup>st</sup> May**

**Mon 3<sup>rd</sup> June**

**Fri 7<sup>th</sup> June**

**Mon 10<sup>th</sup> June**

**Fri 14<sup>th</sup> June**

**Sat 22<sup>nd</sup> June**

**Fri 28<sup>th</sup> June**

National Walk to School Day

Open Day for Education Week (9.15am-11.15am) All welcome!

Somers Camp (for some Year 5-6 students)

Year 3-6 Beach Camp

Resilience Project Parent Webinar

Curriculum Day 3 (No school)

Monarch's Birthday (Public Holiday)

Lightning Premiership Football & Netball (Year 5-6)

Winter Solstice (the school is again involved)

End of Term 2



30 Deans Marsh-Lorne Road,  
DEANS MARSH VIC 3235  
www.deansmarshps.vic.edu.au

Every day is an Open Day at Deans Marsh Primary School.

Staff, students, and families strive together to make Deans Marsh Primary School the best school we can be. On behalf of us all, we look forward to welcoming new families to our school community.

- Russell Taylor-Shaw, Principal

*At Deans Marsh Primary School, we acknowledge that we are on the traditional lands of the Gadubanud people. We pay our respects to their elders, past, present, and emerging.*

# Winchelsea Churches



Freepik

## St John's Catholic Church

Father Joseph Panackal  
0404598558  
Harding St, Winchelsea 3241  
MASS TIMES  
5pm Sat. May 4, 11, 18, 25

## St Thomas' Anglican Church

Rev'd Phil Jacobson  
0477 672 042  
stthomaswac@gmail.com  
Barwon Tce, Winchelsea  
Service 10am

## Winchelsea Uniting Church

0475 777 301  
uca.winchelsea@gmail.com  
Hesse St, Winchelsea 3241  
Services 9.30am Sundays

### Thought for the Week

"Stay in touch with all the turmoil in your heart: anxiety, denial, fear, anger, sudden shifts between hope and despair.

Your true feelings are the clearest channels you have for dialoguing with God and other loving friends."

**John Bader,**  
Former U/C Accredited  
Lay Preacher

## Never Miss A Beat – Heart Week 2024

### Hesse Rural Health

This week, (6-12 May) is Heart Week – Australia's national heart health awareness week.

	MONDAY	TUESDAY	WEDNESDAY	THURSDAY	FRIDAY
<i>Balance &amp; Bones Exercise Group</i>	Beeac	Bannockburn	Winchelsea Coming soon to Rokewood	Inverleigh	-
<i>Heart Foundation Walking Group</i>	Beeac	Rokewood	Winchelsea	Bannockburn	-
<i>Work Out at Winch</i>	-	Winchelsea	-	-	Winchelsea
<i>Get Stronger with Hesse – Gentle movement classes</i>	-	-	-	Coming soon to Winchelsea	-
<i>Post-Partum Exercise Program</i>	-	-	-	-	Coming soon to Winchelsea

This Heart Week we are encouraging our community to never miss a beat. Heart Week is all about shining a light on Australia's heart health and encouraging us all to take the next step in reducing our risk of heart disease.

Heart disease is the broad term given to conditions which affect the structure and function of the heart muscle.

Did you know, heart disease is preventable? You can take action today which will reduce your risk of developing heart disease. We encourage you to take action and never miss a beat by:

- See your GP for a Heart Health Check. This is a 20 minute check-up where your GP will assess your risk of having a heart attack or stroke in the next five years.
- Start a conversation with your loved ones and encourage them to speak to their GP about a heart health check
- Come along to one of Hesse's exercise groups. With multiple walking and exercise groups available, there's sure to be one for you!
- Book an appointment with a member of our Community Health Team, including dietitian, and exercise physiologist to receive tailored support. Appointments can be made by calling Hesse Reception on 5267 1200.

**WINCHELSEA PLAYGROUP**

Every second Thursday during school terms.  
Come along between 10AM - 12PM.

Bring along a piece of fruit to share

Playgroup Leader - Danni Menzies

Email: winchelseaplaygroup@gmail.com

**TERM TWO DATES:**  
18TH APRIL  
2ND MAY  
16TH MAY  
30TH MAY  
13TH JUNE  
27TH JUNE

St. Thomas' Hall,  
27-29 Barwon Terrace,  
Winchelsea VIC 3241





# The Climate Report

## The Black Summer bushfires lessons

Judy Cameron

The Black Summer bushfires of 2019-20 were cataclysmic: a landmark in Australia's environmental history.

They burnt more than 10 million hectares, mostly forests in southeast Australia. Many of our most distinctive, ancient and vulnerable species were worst affected.

A new book titled Australia's Megafires, synthesises the extent of the losses. The work involved contributions from more than 200 scientists and experts. It provides the most comprehensive assessment yet of how the fires affected biodiversity and Indigenous cultural values, and how nature has recovered.

The work reveals a picture of almost unfathomable destruction. More than 1,600 native species had at least half their range burnt. And hundreds of species and ecosystems became nationally threatened for the first time, or were pushed closer to extinction.

We must use Black Summer as an opportunity to learn – and make fundamental changes. Here, we outline six lessons to heed.

### 1. Natural systems are already stressed

*Problem:* Even before BlackSummer, most Australian ecosystems were already struggling due to multiple threats, eg: climate change, weeds and feral animals.

*Solution:* Managing crises such as fires is not enough on its own. Our natural systems must be made more resilient. More effective legislation and management is needed to control all threats that degrade nature. And in some cases, threatened species may need to be relocated to put them out of harm's way.

### 2. We don't know what, or where, all species are

*Problem:* Thousands of Australian species are not (or barely) known to science. It's very hard to protect a species if we don't know it exists, where it lives or how it responds to fire.



NSW Rural Fire Service firefighter and police officer hold a possum and her baby after they rescued them from under a car

ASSOCIATED PRESS

*Solution:* We need to gather more information about how species and environments respond to fires, and to what extent conservation efforts after fires are working. This is especially true for poorly known species groups. And the data should be made accessible to all who seek it.

### 3. Emergency responders don't have enough information

*Problem:* Emergency responders told us that during the fires, they didn't have the information to prioritise the most important areas for conservation.

*Solution:* More than 1,800 of Australia's plant and animal species are at risk of extinction. We must identify which are a priority, where they are, and how to protect them from bushfires. This information must be communicated to emergency responders and incorporated into regional fire management plans.

### 4. Biodiversity usually comes last

*Problem:* Traditionally, the hierarchy of what to protect in disasters goes like this: first human life, then infrastructure, and finally biodiversity. If this hierarchy continues, some of our most significant species and natural environments will be lost.

*Solution:* There are cases, such as avoiding extinctions, where protecting nature is more important than

saving infrastructure. Community priorities should be surveyed, and the information used to inform planning and policy.

### 5. Conservation funding is grossly insufficient

*Problem:* Decades of sustained management effort is needed to recover many species and environments affected by fire. Unfortunately, funding for the task is short-term and inadequate.

*Solution:* Governments must stop seeing spending on the environment as optional. It's as fundamental to our society and well-being as health and education – and funding levels should reflect this.

### 6. First Nations knowledge has been sidelined

*Problem:* First Nations people have used fire to manage forested landscapes for millenia. Yet their knowledge and perspectives have not been incorporated into forest fire management and recovery.

*Solution:* Indigenous people should be supported to rekindle cultural fire practices in forests. And non-Indigenous fire managers should, with consent from First Nations people, incorporate these practices into policies governing fire management and recovery.

### Harnessing our grief

The Black Summer fires showed people care. The disaster triggered an outpouring of grief from Australia and around the world. We understood one thing clearly: we were losing what enriches our lives. But protecting our precious natural assets requires a fundamental reset of Australia's fire management.

Information reproduced from The Conversation.

Full story here: <https://theconversation.com/200-experts-dissected-the-black-summer-bushfires-in-unprecedented-detail-here-are-6-lessons-to-heed-198989>





# WINCHELSEA GOLF CLUB

Ph 5267 2660

Great little country 9 hole golf course  
run by an enthusiastic team of  
volunteers

# Mums Day Out

## WINCHELSEA PLAYGROUP FUNDRAISER

PAINT PARTY & SILENT AUCTION

Sunday May 19th 2024

2PM - 5PM

\$70 per ticket

This includes all art supplies & afternoon tea  
drinks can be purchased at bar prices

Winchelsea Bowls Club,  
Hesse Street, Winchelsea VIC 3241

All proceeds go towards new resources for  
the Winchelsea Community Playgroup.

Limited tickets available  
Scan QR Code to purchase



# Winchelsea Bowls Club



[facebook.com/](https://facebook.com/Winchelsea-Bowls-Club-533783333344345/)

[Winchelsea-Bowls-Club-533783333344345/](https://facebook.com/Winchelsea-Bowls-Club-533783333344345/)



## JOIN THE FUN!

**Winchelsea Auskick Centre**

Eastern Reserve

Thursdays

4:30-5:30pm

Please contact Colleen

0421 210 401

Scan the QR Code to register!







# Blues News

Janet Fletcher

Welcome to the wash up of Round 5 where the Winchelsea Blues players and supporters travelled up the freeway to Galvin Park to play Werribee Centrals. The fabulous run of Autumn weather continued for Round 5 and despite Werribee's facilities make over still not being completed there was a big crowd to watch local Football & Netball.

## RESERVES:

### Winchelsea Blues 3.3.21 were defeated by Werribee Centrals 18.10.118.

The trip to Werribee was always going to be a hard day at the office for Reserves and Coaching staff alike as the Werribee Reserve side has not yet been defeated. To add to this the Blues were hugely undermanned going into the match with injuries and late withdraws coming in on the Friday night. A recipe for disaster – and it was. Apart from kicking the first goal the Blues were completely over run by a very smart, fit Werribee Centrals side. Mutterings heard from the Coaches Box during the last quarter – Please God let the score not get to 100 points - those prayers were answered - the defeat was by 97. To the Blues credit they never dropped their heads in what was a very one sided affair.

GOALS: Angus Leigh 1, Jack Harcom 1, Baxter Boddington 1

BEST: Bailey Kahle, Jackson Timms, Alex Johns, Will Smith, Luke Foot, Hayden Wilson.

## SENIORS

### Winchelsea Blues 11.17.83 were defeated by Werribee Centrals 13.15.93.

Last week the Winchelsea Blues were shaping up for their second win of the season having lost their other matches by an average of 10 points where as Werribee had only lost one of their previous matches coming into Round 5.

It was a good game of footy, the lead changing several times in the first half. After half time the home side held that lead but every time Centrals looked like really breaking away the Blues found a way to peg them back. They just weren't able to get the lead back in the last quarter and went on to lose by that same margin of 10 points. So the average of games lost remains at 10 points.

Competitive every week, with several high profile players to return, hopefully Leigh Ellis along with Riley Berg, Caleb Brown and Jordan Huff are still looking at a couple of weeks. The narrow losses hopefully will be turned into narrow wins.

This week sees the W.F.N.C. host Belmont Lions who have been the surprise packet in Senior Football so far, Belmont Lions have started the 2024 season in sparkling form and the Blues will need their home ground advantage to secure a win next week.

Games are at the usual times – Reserves 12pm, Seniors 2pm

GOALS: Fin Kirsopp-Cole 3, Aaron Cooke 2, Braydon O'Hanlon 2, Tom Moloney 1, Tom Stephenson 1, Jack Symmonds 1, Tavae Sauni 1.

BEST: Fin Parish, Fin Kersopp-Cole, Harry Nagle, Jordan Gould, Tom Stephenson, Tom Rouget.

## JUNIOR FOOTBALL:

The Under10's side continue to be extremely competitive this season after their fledgling games last year with 2 wins and a narrow defeat against the Inverleigh Hawks so far in 2024.

The Inverleigh Hawks Under 10's had requested a change of date and time for the match last weekend which the Winchelsea team were happy to oblige and so played under lights at Eastern Reserve on Friday night.

There was a great support crowd from both sides and everyone enjoyed a very basic BBQ after the game – this is what Junior sport is all about – getting together and playing with some fun attached at the end. Junior parents are doing great work in supporting the W.F.N.C. Junior teams and Coaching staff getting back up and running. Junior training is on Thursday nights at 5pm. Please feel free to come and have a look at our young Junior programme here at the Winchelsea Blues.

## WINCHELSEA AUSKICK:

Winchelsea Auskick is up and about for season 2024 with increased numbers from last year and will be treated to a complimentary Nuggets & Chips with Gravy/ Sauce after their session this week which starts at 5pm. The Auskick training group has received new balls and training equipment and have had great parental input which is what the NAB Auskick Programme is all about.

## JUNIOR CLUB CODES OF BEHAVIOUR:

Parents please be advised that the time for playing and running around is for outside on the oval or netball courts - not inside while patrons of the Blue's Bistro are dining on a Thursday evening. Thank you for your support in governing this.

## EASTERN RESERVE NETBALL COURT SIGNAGE:

There are now signs (although quite small) on the gates of the newly resurfaced Netball Courts at Eastern Reserve regarding the prohibiting of Roller blades/ Scooters and the like AS THE VERY EXPENSIVE resurfacing is not designed to absorb or withstand this sort of wear and tear. Disappointingly there has already been significant scrapes, scuff and dog droppings on the new surfaces.

## RECYCLE 4 CHANGE:

The Recycle4 change is up and running with another 2 full bins being collected last Friday. This is an innovative scheme which is so beneficial to the sporting clubs/anyone taking part – long over due in the state of Victoria – to receive 10cents per bar code of cans/stubbies and the like.

If everyone could make sure the can/bottle/stubbie is empty before putting in the tubs to be recycled that would be great.

## THE BLUE'S BISTRO:

This week on the Menu there will be

### CHICKEN KIEV:

### CURRIED SAUSAGES:

### BATTERED FISH:

Chicken Nuggets and Chips with gravy or tomato sauce for the Junior Blues - still only \$5

This week the missing Menu Board will be back as usual.

## GO BLUES!!



# WINCHELSEA FACEBOOK

## Non-profit community Groups and Pages

What's on in Winchelsea	<a href="https://facebook.com/WhatsoninWinchelsea">facebook.com/WhatsoninWinchelsea</a>
Winchelsea FREE	<a href="https://facebook.com/groups/winchelseafree">facebook.com/groups/winchelseafree</a>
Winchelsea Community Information	<a href="https://facebook.com/groups/207538644446972">facebook.com/groups/207538644446972</a>
Winchelsea Classifieds 3241	<a href="https://facebook.com/groups/216942861684082">facebook.com/groups/216942861684082</a>
Winchelsea Lost and Found	<a href="https://facebook.com/groups/768187693217518">facebook.com/groups/768187693217518</a>
Winchelsea Op Shop	<a href="https://facebook.com/HospitalAuxiliaryOpShopWinchelsea">facebook.com/HospitalAuxiliaryOpShopWinchelsea</a>
Winchelsea Shire Hall	<a href="https://facebook.com/WinchelseaShireHall">facebook.com/WinchelseaShireHall</a>
Winchelsea Community House	<a href="https://facebook.com/winchelseacommunityhouse">facebook.com/winchelseacommunityhouse</a>
Winchelsea Coronavirus Community Support Group	<a href="https://facebook.com/groups/2676957719207927/">facebook.com/groups/2676957719207927/</a>
The Green Winchelsea Residents	<a href="https://facebook.com/groups/515322772623126">facebook.com/groups/515322772623126</a>
Growing Winchelsea Inc	<a href="https://facebook.com/growingwinch">facebook.com/growingwinch</a>
Winchelsea Star	<a href="https://facebook.com/TheWinchelseaStar">facebook.com/TheWinchelseaStar</a>
Winchelsea Movie Club	<a href="https://facebook.com/winchelseamovies">facebook.com/winchelseamovies</a>
Winchelsea Community Market	<a href="https://facebook.com/100083362387611">facebook.com/100083362387611</a>
Winchelsea Land and River Care Group	<a href="https://facebook.com/envirowinchelsea/">facebook.com/envirowinchelsea/</a>
Upper Barwon Landcare Network	<a href="https://facebook.com/UpperBarwonLandcare">facebook.com/UpperBarwonLandcare</a>
Winchelsea & District Historical Society Inc	<a href="https://facebook.com/Winchelseaanddistricthistoricalsociety/">facebook.com/Winchelseaanddistricthistoricalsociety/</a>
Winchelsea Wildlife Shelter	<a href="https://www.winchelseawildlifeshelter.com/">www.winchelseawildlifeshelter.com/</a>
SCARS - Surf Coast Animal Rescue Service	<a href="https://facebook.com/groups/415211698950674">facebook.com/groups/415211698950674</a>
Winchelsea Gardeners	<a href="https://facebook.com/groups/779878518703025">facebook.com/groups/779878518703025</a>
Winchelsea & District Historical Society	<a href="https://facebook.com/Winchelseaanddistricthistoricalsociety/">facebook.com/Winchelseaanddistricthistoricalsociety/</a>
Winchelsea Repertory Society Inc	<a href="https://facebook.com/winchrep/">facebook.com/winchrep/</a>
Winchelsea Globe Theatre	<a href="https://facebook.com/Winchelsea-Globe-Theatre-164790897641678">facebook.com/Winchelsea-Globe Theatre-164790897641678</a>
Winchelsea Uniting Church	<a href="https://facebook.com/winchelseaunitingchurch">facebook.com/winchelseaunitingchurch</a>
St Thomas' Anglican Church	<a href="https://facebook.com/StThomasWinchelsea">facebook.com/StThomasWinchelsea</a>
St John the Baptist Catholic Church	<a href="https://facebook.com/pages/Winchelsea-Catholic-Church/101775670163180">facebook.com/pages/Winchelsea-Catholic-Church/101775670163180</a>
Winchelsea Mainly Music	<a href="https://facebook.com/groups/668500343953191/">facebook.com/groups/668500343953191/</a>
Winchelsea Health Club	<a href="https://facebook.com/WinchelseaHealthClub">facebook.com/WinchelseaHealthClub</a>
Winchelsea Playgroup School terms only. Contact Danni 0432 019 944	<a href="https://facebook.com/groups/551663435367031">facebook.com/groups/551663435367031</a>
Winchelsea Girl Guides	<a href="https://www.guidesvic.org.au/">www.guidesvic.org.au/</a>
Winchelsea/Modewarre Scouts	<a href="https://facebook.com/1stModewarreScouts">facebook.com/1stModewarreScouts</a>
Winchelsea Fire Brigade	<a href="https://facebook.com/winchelseafirebrigade/">facebook.com/winchelseafirebrigade/</a>
Winchelsea SES	<a href="https://facebook.com/groups/WinchSES">facebook.com/groups/WinchSES</a>
Country Women's Association - CWA Winchelsea	<a href="https://facebook.com/pg/CWAWinchelsea/">facebook.com/pg/CWAWinchelsea/</a>
Winchelsea Bowls Club	<a href="https://facebook.com/Winchelsea-Bowls-Club-533783333344345/">facebook.com/Winchelsea-Bowls-Club-533783333344345/</a>
Winchelsea Blues Cricket Club	<a href="https://facebook.com/groups/8999049476/">facebook.com/groups/8999049476/</a>
Winchelsea Blues FC	<a href="https://facebook.com/WinchelseaFNC/">facebook.com/WinchelseaFNC/</a>
WYLD Winchelsea Youth Leisure and Drop in	<a href="https://facebook.com/groups/569737570027065/">facebook.com/groups/569737570027065/</a>
Lions Club of Winchelsea	<a href="https://facebook.com/LionsWinchelsea">facebook.com/LionsWinchelsea</a>
Winchelsea Probus	<a href="https://facebook.com/893535194971083">facebook.com/893535194971083</a>
Winchelsea Golf Club	<a href="https://facebook.com/winchelseagc/">facebook.com/winchelseagc/</a> <a href="https://facebook.com/groups/1324943804676697">facebook.com/groups/1324943804676697</a>



# Support Australian bees and beekeepers with a sweet morning tea

Bees will take centre stage at coffee and tea breaks across Australia, thanks to a new nationwide morning tea to celebrate the vital roles bees and beekeepers play in food production, biodiversity and ecosystem health.

The Great Bee Morning Tea is being launched by the When Bee Foundation in the lead up to World Bee Day on 20 May, with this year's theme recognising the important role bees play in global food systems.

When Bee Foundation CEO Fiona Chambers says The Great Bee Morning Tea is encouraging people to take positive steps to support these crucial contributors to Australian agriculture. "More than just producing honey, bees and beekeepers provide a vital yet often unrecognised service to Australian agriculture," Ms Chambers says.

"At least 53 crops grown in Australia rely on pollination by insects to some extent - crops such as almonds, macadamias, avocados, apples, pears, berries, stone fruit, plus vegetables and canola. This pollination is provided by managed honey bees, along with native bees and other pollinators, which all contribute to improving yield and quality of these crops."

The threats to bees and other pollinators are well documented, with pests and diseases, habitat loss and reduced floral resources all having a negative impact.

Meanwhile, beekeepers face increasing pressures from rising costs in managing pests and disease, severe weather events including bushfires, floods and droughts, and decreasing prices received for their honey, driven in part by competition from cheaper imported honeys.



These factors threaten bees and beekeepers and the pollination services they provide agriculture, right at a time when agriculture is demanding more

A graphic illustration for 'The Great Bee Morning Tea'. The background is a vibrant yellow. In the center, there is a white teapot with a lid, a white vase containing several flowers (one purple, one orange, one white), and a brown honey jar. A yellow bee is flying near the honey jar. The text 'THE GREAT BEE MORNING TEA' is written in large, white, bold, sans-serif capital letters on a dark purple rectangular background at the bottom of the illustration. Below the illustration, there is a call to action: 'Show your support for bees and Australian beekeepers and the vital role they play in food production by taking part in The Great Bee Morning Tea.' To the right of this text are three circular icons: a flower, a bee, and a fork and knife. Below the icons is the text 'WHEN BEE FOUNDATION'. At the bottom left of the illustration, there is a small line of text: 'Find out more at [WhenBeeFoundation.org.au/GBMT](http://WhenBeeFoundation.org.au/GBMT)'.

pollination, with increased plantings across major pollinator-dependent crops.

"These imported products are actually undermining Australian beekeepers and, in doing so, threatening Australia's agriculture industry," Ms Chambers says. "By joining in The Great Bee Morning Tea, and buying Australian honey, you provide a revenue stream that supports Australian beekeepers to continue providing pollination services to Australian farmers."

Businesses, schools and community organisations are all encouraged to hold a Great Bee Morning Tea in May filled with

treats made with pure Australian honey. [whenbeefoundation.org.au](http://whenbeefoundation.org.au)

"Getting involved is easy, simply gather a group of friends or colleagues and encourage everyone to bring something made with Australian honey," Ms Chambers said. "We want to see people making honey-filled biscuits, cakes and honey joys, or buying snacks and baked goods made with pure Australian honey."

Find out more about the Great Bee Morning Tea at [whenbeefoundation.org.au/gbmt](http://whenbeefoundation.org.au/gbmt)

# MRP

## Steelworx

Matthew Partridge

p 0418 672 334

e mrpsteelworx@yahoo.com.au

### Welding Service

- Onsite welding
- Farm maintenance
- Farm machinery & equipment repairs
- Cattle & sheep yards
- Custom built trailers
- Supply & install gates



5234 6585 0417 385 984

For all your domestic & stock water.  
Also available for road and civil construction  
Local owned and operated.

52672192 R & K Creative Framing  
for all your framing needs

free quotes  
pension discount  
specialist in Age &  
Disability Modifications

Ray & Kim Jansen  
10 Witcombe st  
Winchelsea 3241

Ray The Home  
Maintenance HANDYMAN  
abn 47929623462

0414672192



## Winchelsea Supermarket

Trading Hours

**Monday to Saturday**

8.30am to 7.30pm

**Sunday**

10am to 7pm

**Ph: 5267 2676**

29 Main St, Winchelsea

## Antique Repairs

By **Doug Burns** est. 1976

- All Furniture
- French polishing
- Carving
- Veneering
- Wood Turning
- Porcelain



*Unusual Requests Welcome*

180 Barwon Terrace, Winchelsea

**0428 672 704**

All About

## Mowers & Chainsaws

Repairs to all makes and models of ride on mowers, domestic mowers, pumps, chainsaws, brushcutters and small engines.

Trading Hours: Mon - Fri 8am - 5pm Saturday 8am - 12 noon

**5267 2266**

Cnr Princes Hwy & Lennox St Winchelsea

[www.allaboutmowers.com.au](http://www.allaboutmowers.com.au)

[accounts@allaboutmowers.com.au](mailto:accounts@allaboutmowers.com.au)



# SOUTHERN GRAIN STORAGE PTY. LTD.

AG SUPPLIES FERTILISER GRAIN STORAGE SEED CLEANING

**(03) 5267 2351**

## Simco Plumbing and Gasfitting

24/7 Emergency service Ph:0400643976

- All General Plumbing and Gasfitting
- Roof and Gutters, Hot Water service changeover
- Split Systems, Air Conditioning and Wood Heaters
- Irrigation, Septic and Treatment plants
- Excavation, Bobcat and Tipper
- Rain water Tank installation
- Renovations and Extensions
- Gas conversions and servicing

Simon McGillivray

Lic:109610. Free quotes, Fast and friendly service

## Winchelsea Men's Shed



**For The Community**

Men's Shed Kindling/Offcuts  
Bags of Kindling/timber offcuts  
are available for pick up from  
the Men's Shed on Wednesday's  
from 9.30 to 2.30.

If you need a delivery made you  
can call Bill on 0438 083 373.  
The price for a bag of kindling is  
now \$7.00 (up from \$5.00).

**Nesting Boxes**

Bird or animal nesting boxes are  
available from The Men's Shed.

These can be made to order.

Call in on any Wednesday  
to have a chat.



## A genuine thankyou to Surf Coast Shire

### Jenny Mathison

Did you know that the Surf Coast shire has a Litter Prevention Officer?

No? Well neither did I until this week when “someone” dumped a trailer load of rubbish not far from my home early Saturday ... rubbish that could so easily have been freely accepted at the “tip”.

I reported it via an email to the Shire and received a CRM number - something you get when you contact the Shire and your call needs attention.

I was driving past this rubbish on Monday when I observed it being neatly packed in a vehicle by a council worker.

I stopped for a chat, as I am prone to do. What an enlightening conversation. I now ask the question! Why are people so keen to rubbish our roads? What has happened to our sense of pride that we litter our beautiful countryside. I am disgusted.

Thank you, Luke from Surf Coast Shire, and your fellow workers for what you do to tidy up. I am just so sorry the need is there. I am pleased you can track many of the offenders and, like you, can't wait for the next equipment to be in place to catch even more offenders. There are ways and means.

If, like me, you feel assaulted when you see a pile of rubbish dumped on the roadside, the Litter Prevention Officer would appreciate an email to [info@surfcoast.vic.gov.au](mailto:info@surfcoast.vic.gov.au) with the directions.

Environment Protection Authority Victoria (EPA)

### Judy Cameron

Thanks Jenny for that advice re finding dumped rubbish in the Surf Coast Shire.

If you actually see someone littering you can report that to the Environment Protection Authority Victoria. <https://www.epa.vic.gov.au/report-pollution/report-litter-from-vehicles/report-littering-from-a-vehicle/datelocationdetails>

### What litter you can report via this link

The types of litter you can report are:

- cigarette butts
- organic waste (for example, food or apple cores)
- chemicals
- metal (for example, aluminium cans)
- glass (for example, beer bottles)
- plastic (for example, food packaging)
- fabric
- anything that falls from a vehicle

To complete a report you'll need:

- vehicle details (for example, registration, model and make) and the location where the littering took place
- any other observations regarding the incident (for example, date and time)
- willingness to attend court as a witness if required (only 2 per cent reports end up going to court).

By reporting litter, you play a vital role in keeping Victoria clean!

Last year EPA received approximately 20,000 reports of littering from a vehicle, and 70 per cent of those received a fine.

## Local Legend Sue Saw Nurturing generations in Anglesea

The early years classroom is teacher Sue Saw's happy place, and she cherishes every moment witnessing children progress.

“I love the interaction with different children and following their progress through each year,” Sue says. “Seeing the growth and the learning in each individual child through the months of the year, supporting the children and encouraging their learning.”

Sue has spent the majority of her many years in education nurturing generations in Anglesea, teaching and volunteering at Anglesea Primary School and Anglesea Kindergarten.

She remains a volunteer in retirement and her caring contribution has qualified her as Surf Coast Shire's latest Local Legend.

“Sue helps children with learning activities, from craft to puzzles and making playdough. She fosters an inclusive environment, as well as encouraging children to develop confidence and resilience,” her nominee, Anglesea Kindergarten lead teacher Sarah Womersley said. “She makes every child feel special.”

Sue – mum of Daniel, Adam, Elise and Laura, and grandmother of 11 – said the acknowledgement took her by surprise. “I feel very humble and grateful, I was quite taken aback,” she said. “It is wonderful and gives me a lot of pleasure. I've been really lucky living in this lovely community. I am so grateful to Anglesea Kindergarten and lead teacher Sarah for nominating me.”

Sue counts her 1976 posting to Anglesea to teach at the primary school as a blessing and across the decades since has maintained a constant passion to give back to her community.



Local Legend Sue Saw at Anglesea Kindergarten with grandchildren Raph and Quinn Menze

Strong involvement with the kindergarten while her kids attended led to her taking up a teaching position there in 1994, which she maintained until her formal retirement in 2007.

Along the way Sue has contributed to school and kindergarten parent groups and committees, was president of the primary school council, and assisted in the organisation of the celebration when the old school closed and the new Anglesea Primary School opened in 2011.

Sue said in retrospect her retirement might have been a little premature. “I really missed working in the field, and I had more to contribute so I offered my services as a volunteer to both the kindergarten and the school,” she said. “I'm not quite over the hill yet! I love what I do, it's keeping me on my toes, keeping me engaged and feeling as if I'm a worthwhile part of the community.”

Visit [surfcoast.vic.gov.au/LocalLegends](http://surfcoast.vic.gov.au/LocalLegends)



Café La Hoot

have you tried  
'owl' coffee?

1 willis st. cafelahoot@gmail.com 0407 528 999

## TRENCHES & HOLES PTY LTD.



**PHILLIP ROBERTSON**

☎ **0427 672 945**

**WINCHELSEA**

- General Earth Works
- Driveways
- Trencher
- Kanga Loader
- Grader
- Excavator Work (3.5 & 6.5 Tonne)
- Tip Truck
- Rock Breaker
- Post Holes & Shed Footings

A.B.N 74006896898

**WAZZA'S**  
WATER CARTAGE

Stainless Tanker Up to 22,000 ltr loads  
Barwon Water Registered

Domestic & Rural Water Supplies

Call Wazza  
Mob: 0428 877 260  
Email: wazza@wazzas.com.au Web: wazzaswater.com

## M & L DRAYTON PLUMBING SERVICES

REG No 24356 C/A No C02594

- Domestic and Rural Plumbing
- Roofing
- Sewerage & Septic
- LPG & Natural Gas Connections
- Motorised Drain Cleaning
- Backhoe Hire

**Phone Mark 5288 7244**  
PO BOX 98 WINCHELSEA 3241  
**Mobile 0428 520 142**



- DECKS - SAUNAS
  - FLOORING - PERGOLAS
  - WEATHERBOARDS
  - HORSE SHEDS
  - CLADDING - FENCES
- ALL THINGS TIMBER AND MORE...

INSTAGRAM guim\_designs

CALL PAT ON

**0401 232 674**



# Netball News



Claire Mawson

Whilst we lost all junior games Saturday we have never come away from Werribee with all wins in the seniors.

C and D grade have improved out of sight over the five rounds smashing Werribee all over the court.

B grade hit Werribee out of the park, showcasing amazing netball all over the court.

A grade coming off an upset last week had a score to settle this week and did not disappoint the winch supporters. Without Kat Kasparian in goals we had to rejuggle the line up and A grade showed the versatility and strength to do this.

Bring on Belmont Lions next week.

### 13s - Werribee 21 def Winch 5

Our little blue babies did a great job after an early start at werribee on the weekend. New player Reegan was amazing, showing her versatility through the court. We are seeing great improvement through the side.

Best Reegan and Hannah

Reported by coach Isabelle Ryan

### 15s - Werribee 18 def winch 15

Winchelsea showed a great ability to adapt and work hard in physical conditions. While coming away with a narrow loss, the girls should be proud of their effort and ability to play a full

4 quarters. Esther Grimmer showcased her versatility across goals and mid court, with Reani Mawson's return to the side providing strength for the team.

Best Reani and Esther

Reported by coach Rhi Williams.

### 17s - Werribee def Winchelsea

Our girls started flat footed and couldn't hold back werribee on the weekend. It was not our best display of netball but I am happy with a minimal difference against a top 4 side. Regroup and fine tune the tiny things to improve on ready for East in 2 weeks which will be our biggest challenge.

Best Millie and Jess

Reported by Angie Mawson coach.

### 19s - Werribee 55 def Winch 6

Outclassed by a tough Werribee team. A lot of improvements to be made with defensive pressures as the ball was coming down quick into our defenders when Werribee got turnovers. Our defenders were able to get a lot of hands to balls and some intercepts, however Werribee were just too good all over for our girls today. Back to the drawing board at training this week with hope to improve in our movement down the court prior to a tough Belmont lions next week

Best on : Emily Caldicott, Jess Loney & Kalarni Boddington



## Mother's Day scam alert for shoppers

The State Government is reminding Victorians to be extra cautious when buying gifts this Mother's Day, with data showing May is a peak month for scams.

Minister for Consumer Affairs Gabrielle Williams urged Victorians to be on the lookout for scams when shopping in the weeks leading up to Mother's Day on 12 May, particularly when purchasing gifts online.

Data from the Commonwealth Government's National Anti-Scam Centre shows that May was the second-highest month for scams in 2023, with over 25,000 complaints nationally and \$53.2 million reported lost to scammers. Only January, with \$53.3 million in reported losses, was worse.

Online shopping scams and fake websites designed to look legitimate are of particular concern for Mother's Day, as scammed consumers pay for goods that never arrive.

Scammers posing as sellers often produce fake advertisements offering non-existent products for low prices. These fake ads are then posted on genuine websites, online classifieds and online auction sites. Other scammers hijack reputable sellers' advertisements, business details, logos and seller feedback profiles to trick consumers.

Scammers often request that buyers transfer the money through a money wiring service, and they may also use fake money payment services and escrow websites that look real.

Some scammers also pose as buyers, tricking sellers into sending goods even though no money is paid.

These scammers pretend to pay too much, then ask the seller to pay the difference back to them. They use fake emails confirming overpayment from what appears to be a reputable company offering money transfer or payment services.

Consumers can find information and advice on how to avoid scams and what to do if they are scammed on the Consumer Affairs Victoria website at [consumer.vic.gov.au](http://consumer.vic.gov.au).

## Stay well this winter by getting your annual flu vaccination

Victorians are being reminded to book in their annual flu vaccination ahead of an expected rise in flu and other respiratory viruses this winter.

Victorian Chief Health Officer Clare Looker said "The flu can be deadly – getting vaccinated is the best thing you can do to protect yourself and your loved ones. The influenza virus changes throughout the year so new vaccines are developed for each season, which is why it's critically important to stay up to date with your shots."

Flu vaccination is recommended for anyone six months and older and is free under the National Immunisation Program for people

considered to be at higher risk.

People considered to be at higher risk include children aged six months to under five years, Aboriginal and Torres Strait Islander people aged six months and older, pregnant women, people aged 65 and over, and people with medical conditions that put them at increased risk of severe flu and its complications.

People can get their vaccine at general practices, pharmacies, council immunisation clinics, Aboriginal Health Services and often at their workplace.

There have been 7,769 cases of flu reported in Victoria so far this season, 1,455 more cases than the same time last year. It remains early in this year's flu season and numbers are expected to rise more steeply as we head into winter.

Dr Looker said annual vaccination reduced the chance of catching flu and could reduce the severity of illness in those who still become infected.

"Flu is highly contagious," she said. "While it most often causes mild to moderate illness with symptoms such as fever and cough, severe illness can develop. Especially vulnerable are babies, children, older people, and people with underlying medical conditions."

Flu vaccines can be given at the same time as other National Immunisation Program vaccines and COVID-19 vaccines.

In addition to vaccination, simple steps can be taken to stop the spread of respiratory illnesses in the community, such as flu, seasonal respiratory illnesses, and COVID-19. This includes washing or sanitising hands, coughing or sneezing into your elbow, wearing a mask, and staying home when sick.

### COVID LIVE VICTORIAN SUMMARY

Mon 6 May

CATEGORY	TOTAL	NET
Cases	3,015,026	0
7d Average	136	Up 31
Hospitalised	116	-
ICU	0	-
Deaths	9,387	-
Vax Doses	18,400,000	-

## New campaign to keep Victorians safe online

The State Government is marking World Password Day by launching a new cyber safety campaign to keep Victorians safe online.

Minister for Government Services Gabrielle Williams today encouraged Victorians to head to the Service Victoria app to test out the new password safety tools, including a password strength tester and generator.

These tools have been created to help Victorians make stronger passwords and keep their information safe from cyber criminals.

A cyber criminal can hack a weak password in seconds, but



hacking a strong password can take centuries. The Will your password pass the test of time? campaign provides Victorians with both tools and advice on how to keep their information safe online.

The campaign promotes six simple steps people can take to protect their information and be safer online, including:

- use passphrases
- use a different password for each account
- make your passwords harder to guess by avoiding predictable words
- use a password manager
- update your passwords when required
- turn on multi-factor authentication.

The tools on the Service Victoria app can test the strength of a password but also generate suggested strong passphrases, with each passphrase being unique and random.

Both tools are completely anonymous and secure, and no information is collected, tracked, or stored.

Victorians can learn more about online safety by visiting the Government's new Stay Safe Online website. The website has a range of information on passwords, multi-factor authentication, updating devices, and online scam awareness.

For cyber safety information and advice on how to use the new tools, visit [vic.gov.au/stay-safe-online](http://vic.gov.au/stay-safe-online).

---

## More mental health support to help students thrive

The State Government is giving thousands of Victorian students the free, confidential wellbeing support they deserve – with nation-leading mental health initiatives now rolled out across government secondary and specialist schools and at the halfway mark across government primary and low-fee non-government primary schools.

Premier Jacinta Allan and Minister for Education Ben Carroll visited Wurun Senior Campus – a joint school for senior students from Collingwood College and Fitzroy High School – to meet some of the dedicated mental health practitioners who support more than 9,300 Victorian secondary students with their mental health each year.

Mental health practitioner Anna Nissen is one of 400 secondary school mental health practitioners who delivered more than 70,000 support sessions last year across the state – giving students the safe, judgment-free care they need without the expense of an external mental health provider.

Since 2023, every Victorian government secondary school has been funded to employ a dedicated mental health practitioner to offer counselling and early intervention services, coordinate support for students, and to refer them for specialist treatment where needed.

Half of all government primary and low-fee non-government primary schools are now funded to employ a Mental Health and Wellbeing Leader, with the remaining half on track to join them progressively by 2026.

As of this year, all government schools also have access to the Labor Government's dedicated Schools Mental Health Fund and Menu, enabling them to provide programs, training and additional staff to intervene early to support students and provide targeted and individualised support.

The Labor Government's \$600 million investment in student mental health is the largest in Australian history and will ensure Victorian students can access the mental health and wellbeing support they need, when they need it.

The world-class Wurun Senior Campus was funded in the Victorian Budget 2019/20 – and opened as part of the Labor Government's redeveloped Gasworks precinct to give local families a great new school, close to home.

---

## Backing Victorian renters when they need it most

The Victorian Government is delivering on a key promise of the landmark Housing Statement, with more support for Victorian renters in rental stress.

Minister for Consumer Affairs Gabrielle Williams today launched the \$7.8 million Rental Stress Support Package at South East Community Links, which will receive support around 1,400 adults and 3,000 children who rent in the south-eastern suburbs.

Around 5 per cent of Victorian households are facing serious rental stress, with demand increasing for organisations that provide information and advice, financial counselling, advocacy and legal assistance to Victorian renters.

The Rental Stress Support Package will help families stay in their homes and prevent homelessness, and builds on the Housing Statement commitment to back the critical work of community organisations addressing the high demand for rental assistance we know is being seen across Victoria.

The other organisations receiving funding are Anglicare Victoria, Launch Housing, Justice Connect, Housing for the Aged Action Group, Child and Family Services Ballarat, Quantum Support Services and Mallee Family Care.

Tenants Victoria was also selected in partnership with local not-for-profit organisations ARC Justice, Barwon Community Legal Service, Peninsula Community Legal Centre and WEStjustice.

The package builds on a \$4.74 million investment to support Consumer Affairs Victoria's tenancy programs, including the Tenancy and Retirement Housing Assistance and Advocacy Programs.

These programs helped more than 8,800 Victorian renters last financial year with information and advice, negotiation support and assistance with VCAT hearings.



## **Winchelsea Community House and Shire Hall**

Hours: Monday-Friday 9.00am -2.00pm

Address: 28 Hesse Street, Winchelsea

Phone: 52672028

[www.winchhouse.org.au](http://www.winchhouse.org.au)

Email: [reception@winchhouse.org.au](mailto:reception@winchhouse.org.au)

### **Term 2, 2024**

#### **Singing Group**

When: Wednesday afternoons 4.45-6pm

Next: Wednesday 8 May, 2024

Winchelsea Shire Hall Space

Cost \$7.50 per session Under 16 free

Bookings: [reception@winchhouse.org.au](mailto:reception@winchhouse.org.au)

#### **Crochet Group**

When: Alternate Saturday afternoons

1.30 Winchelsea Community House Space \$5 per session

Next Session Saturday 4 May, 2024

#### **Chatty Cafe**

When: Friday mornings 10.30am-12 noon (during school terms).

Next Session: Friday 10 May, 2024

Winchelsea Shire Hall Space

No bookings required.

We will have our Chatty Café Volunteers present to welcome you.

#### **Knitting Group**

When: Thursday mornings 10.30-12 noon (during school terms)

Next Session: Thursday 9 May, 2024

Come along and learn to knit or bring your knitting project and come and chat with others. Winchelsea Community House Space

#### **Tai Chi**

When: Friday mornings 9.00am-10.00am

(during school terms)

\$10 per session

Next Session Friday 3 May, 2024

#### **Be Connected**

##### **(Free Building Digital Skills program)**

When: Friday mornings

11.30am drop in sessions (FREE)

Connect with others to explore the world of Digital literacy

#### **Sound Healing**

When Wednesday 8 May, 2024

Winchelsea Shire Hall Space

\$40 per session. Bookings now open

Please call Vicki on 0400 149 749

#### **Gentle Movement**

Cost \$5 per session (New day)

Next Session: Thursday 16 May, 2024 at 1pm

Winchelsea Community House Space

Email: [reception@winchhouse.org.au](mailto:reception@winchhouse.org.au)

#### **Gluten Free Bread Making**

Saturday 25 May, 2024 10.00am-2.00pm

Further information coming soon

Expressions of Interest

[reception@winchhouse.org.au](mailto:reception@winchhouse.org.au)

#### **Learn to Knit Socks**

When: Friday afternoons 1-3pm

Cost \$60 for 3 weeks

Friday 7, 14, 21 May

Expressions of Interest

[reception@winchhouse.org.au](mailto:reception@winchhouse.org.au)

Community Houses such as ours provide programs and activities to learn new skills, brush up on your existing skills and more than anything to connect with others in your community and reduce social isolation.

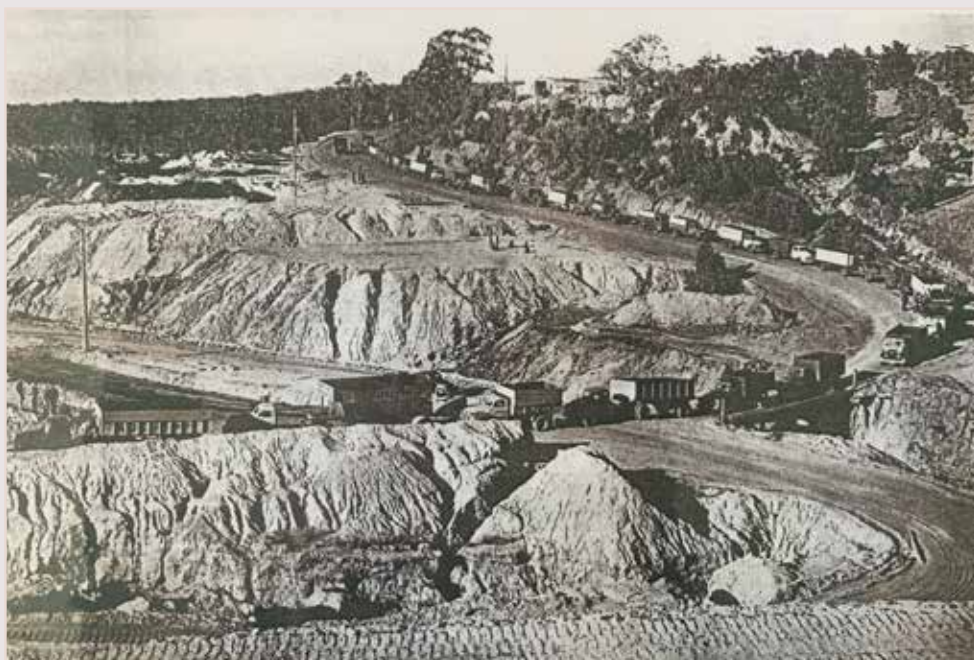
New skills may help you with employment and build your confidence to in turn help others.

Activities such as singing and sound healing help your mind and reduce any unwanted stresses.

Have a think about doing something for yourself and join in our activities.



# The Otway Coal Mine



## WINCHELSEA HISTORICAL SOCIETY

Hesse Street Cnr Princes Highway Winchelsea 3241

OPEN Wednesdays 1 - 4pm Fridays 10 - 3pm

Coal was first discovered by Messrs Bert Armistead and Ken Strickland in 1911 on the property owned by Mr Bert Armistead whilst they were looking for water for their horses. A company was formed and operated by B J Nicholls.

The mine - "The Otway Coal Mine" - was closed after a few years and re-opened in 1920-21 until 1927.

The 1920 mine was producing coal before the aerial system was ready for use

and during this period it was roaded to Winchelsea on a steam lorry and railed from there.

The mine was opened for the third time in 1942 when "The Wensleydale Coal Mine" was formed. This was to aid Australia's war effort. As a result of this effort, the road to Winchelsea was sealed. A large convoy of trucks were given access to the Princes Highway for the first time.

In 1948 Roche Brothers commenced operations and the deposit was 51/2 million tons.

A power line was erected for 7 miles to Winchelsea to cope with the power load. Mr A B Casboul was Mine Superintendent and many locals - who we have a list of - worked there. The Winchelsea brown coalfield ceased production in 1959, due to non-renewal of the contract with the State Electricity Commission and moved to Anglesea.

Due to the industry, the development of Winchelsea was rapidly accelerated and a number of residences were built by the Housing Commission.



## Surf Coast Community Bank Community Investment program.

**John Knuckey**  
Chair, Community Bank Surf Coast - Winchelsea,  
Anglesea and Lorne Community Bank branches.

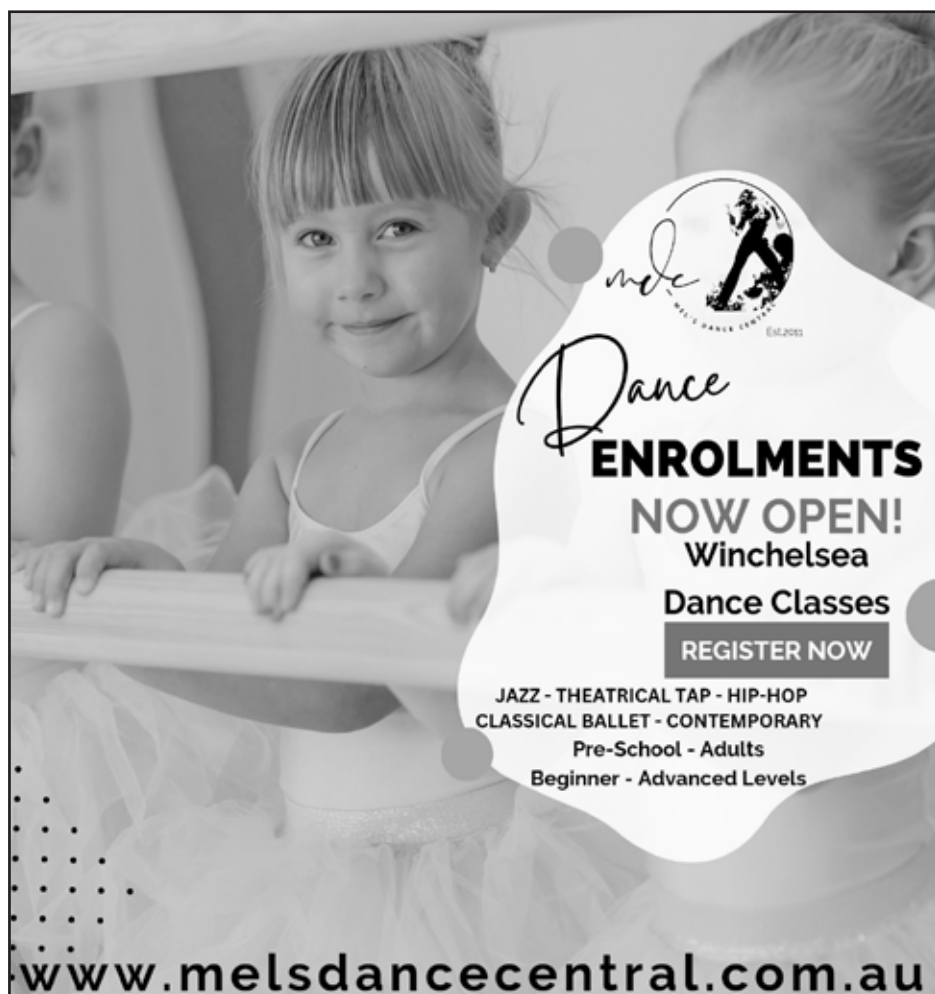
Our Community Bank celebrated our 20th Birthday last year and we are proud to advise that we have exceeded a milestone of returning over \$4m to groups and organisations throughout the greater Anglesea, Winchelsea and Lorne region.

Over the last couple of years we continue to see a record number of worthy applications from all across our catchment, across all sectors from Arts, Community infrastructure to Sports and Wellbeing. This year we have approved requests for more than 40 groups and organisations and have now fully allocated our Community Investment fund for the 2023/2024 financial year meaning we have had to cancel our final round of applications scheduled to open on 15 May 2024.

The amount of return is something that we couldn't have imagined, and is thanks to the many personal and business customers that entrusted our team to deliver them the banking solutions they need from our Winchelsea, Anglesea and Lorne Community Bank branches.

The Community Investment program will continue in the new financial year and we look forward to continuing to support the community that supports us.

Thank you for your understanding and support. Remember its holding your accounts with our Winchelsea, Anglesea and Lorne Community bank branches that enables us to give back to our Community- so please tell your group members and supporters to talk with our teams at our local branches who will help them to fulfil their banking needs and financial goals.



*mels*  
MELS DANCE CENTRAL Est. 2001

**Dance**  
**ENROLMENTS**  
**NOW OPEN!**  
**Winchelsea**  
**Dance Classes**  
**REGISTER NOW**

JAZZ - THEATRICAL TAP - HIP-HOP  
CLASSICAL BALLET - CONTEMPORARY  
Pre-School - Adults  
Beginner - Advanced Levels

[www.melsdancecentral.com.au](http://www.melsdancecentral.com.au)



**Kyeema**  
Rural Fencing Pty. Ltd.  
Jason Armstrong & Jay Hawker  
1080 Prices Lane, Ombersley, Victoria, 3241  
0419 565085 (Jason)  
0416 585817 (Jay)  
kyeemafarm@kyeemafarm.com.au  
Also incorporating domestic and rural tree trimming services.



**5234 6585 0417 385 984**  
*For all your septic tank, grease traps  
and interceptor pits servicing.  
Locally owned and operated*

**CONCRETER**  
Alister Aitken

**No job to big or small**

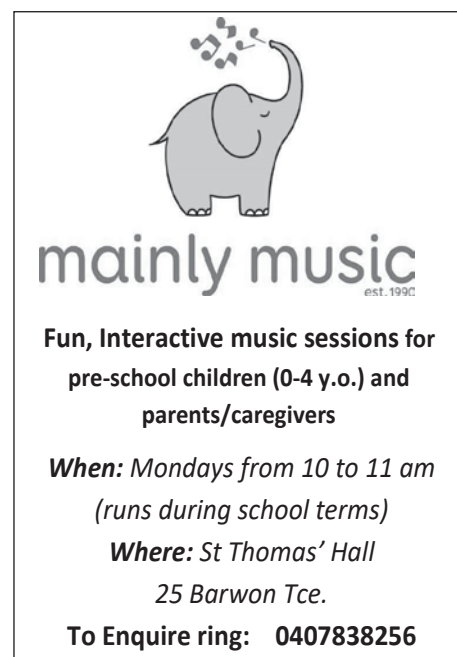
- Driveways - Carports - Crossovers - Footpaths -
- Sheds Slabs - Colored Concrete - Concrete sealing - Exposed Aggregate - & more -

**Call or text for a no obligation free quote**

**Servicing our local Winchelsea & Surrounding Areas**

alaitken.aa@gmail.com or Alister - 0411 871 950

A.B.N 47 228 574 460



**mainly music**  
est. 1990

**Fun, Interactive music sessions for pre-school children (0-4 y.o.) and parents/caregivers**

**When: Mondays from 10 to 11 am (runs during school terms)**

**Where: St Thomas' Hall  
25 Barwon Tce.**

**To Enquire ring: 0407838256**



Yaneekan-werreeyt Wadawurrung Dja

# JOURNEY ON Wadawurrung Country

Wadawurrung Traditional Owners | Ferne Millen | Vicki Hallett



IMMERSIVE EXHIBITION  
May 28 – June 16  
GRANT PAVILION. TORQUAY



Wadawurrung  
Traditional Owners  
Municipal Corporation

GIVE  
WHERE  
YOU LIVE  
FOUNDATION



Transport  
Accident  
Commissioner



## Steps to Accessing Aged Care Your questions answered

WHERE: Winchelsea Community House,  
28 Hesse Street, Winchelsea Vic 3241

WHEN: Tuesday 18 June 2024 10:30am  
(Morning Tea Provided)

- Navigating the aged care system from home care to residential care (for those requiring more support)
- Accessing government funding
- The benefits of respite care for you and your carer
- Become a volunteer and make a difference in the lives of those living in residential care
- Demystifying residential aged care
- Navigating the aged care system from home care to residential care (for those requiring more support)
- Accessing government funding
- The benefits of respite care for you and your carer
- Become a volunteer and make a difference in the lives of those living in residential care
- Demystifying residential aged care

Estia Health are proud to present free information sessions to help you understand and access the support you need.



- Domestic and Commercial hire equipment • Industrial welding gas
- Digging and Earthmoving equipment • New trailers and trailer repairs
- Firewood • Stockists of Royal Oil Lubricants products
- LPG for domestic and commercial requirements

Give Chris and the Team a call on **5232 1177** or email [info@colachire.com.au](mailto:info@colachire.com.au)

[www.colachire.com.au](http://www.colachire.com.au)

101 Wallace St Colac 3250



**Green Lead Electrical**  
Connecting you to a greener future  
REC 230311

0467 097 101 

**Servicing Geelong & the Surf Coast**

**Specialising in all residential electrical work including:**

- Switch board & lighting upgrades
- Outdoor lighting
- Electrical safety checks
- Energy efficient LED lighting
- Ceiling sweep fans & ventilation
- Energy saving advice

**Phone Martin Wilkinson:**  
**0467 097 101**  
[greenlead@outlook.com](mailto:greenlead@outlook.com)

1192268-CG18-14



**Water Supply Specialists**  
WATER SOLUTIONS

74 Dennis Street, Colac  
5231 1861

ALL THINGS WATER

- PUMPS • PIPES
- FITTINGS • TANKS
- POOL CHEMICALS
- IRRIGATION
- WATER PURIFICATION
- SOLAR • REPAIR

**HESSE RURAL HEALTH**



Acute Care•  
Urgent Care•  
Residential Aged Care•  
Communitiy Nursing  
Dietetics  
Physiotherapy  
Occupational Therapy

Diabetes Education  
Social Support Groups  
Counselling  
Home Care  
Health Promotion  
\* services from Winchelsea only

[www.hesseruralhealth.com.au](http://www.hesseruralhealth.com.au)  
P: (03) 5267 1200 E: [reception@hesse.vic.gov.au](mailto:reception@hesse.vic.gov.au)

**Funeral Planning**  
*Working out what is best for you.*  
Prepaid Funerals, Funeral Bonds, Pay-by instalments...

There are many options and its important to make the right choice.

Alyson Burchell will be available by appointment to answer any questions about funerals and planning ahead.



For more information or to make an appointment contact Sue on 5221 4788

Tuckers Community Office,  
Surf Coast Taxation Services, 22 Willis Street,  
Winchelsea

**First Tuesday of the Month,  
by appointment 10.00am - 12.00pm**

*Caring for families since 1883*

**Tuckers**  
Funeral & Bereavement Service  
...for a life worth celebrating

5221 4788  
[www.tuckers.com.au](http://www.tuckers.com.au)

**JGW** JACK'S GARDENING WINCHELSEA

**SERVICES**

- SMALL & MEDIUM YARD LAWN MOWING
- EDGING
- WHIPPER SNIPPING
- PRUNING
- CLEAN UPS
- WEED SPRAYING
- MULCHING
- ODD JOBS



**CONTACT**

---

**JACKSON HUNT**

---

Phone: 0451-993-791  
Price: \$60 per hour

**Lupton BUILDERS** 

SPECIALISING IN QUALITY




REGISTERED Building Practitioner

- NEW HOMES
- ALTERATIONS
- CARPORTS
- BATHROOMS
- EXTENSIONS
- DECKS
- VERANDAHS
- WINDOW REPLACEMENTS
- RENOVATIONS
- PERGOLAS
- RE-GLADS

LEIGH LUPTON  
0438 840 104

CHRIS LUPTON  
0407 681 514

[LEIGHLUPTON17@GMAIL.COM](mailto:LEIGHLUPTON17@GMAIL.COM) Est. 1977

*growing Winchelsea*  
Towards 10,000.






# SERVICES & ACTIVITIES - WINCHELSEA

## VLINE TRAIN SERVICES

### TO MELBOURNE:

Mon - Fri 6:41 am, 7:57am, 11:14am, 2:08pm, 7:23pm  
Sat - Sun 9:26am, 1:30pm, 7:18pm

### TO WARRNAMBOOL:

Mon - Fri 8.56am, 11.55am, 2:50pm, 5.27pm,  
6:45pm, 8:50pm  
Sat - Sun 8:47am, 2:46pm, 8:34pm



## COUNTRY WOMEN'S ASSOCIATION

7pm second Wednesday of month  
Winchelsea Senior Citizens' Hall



## WINCHELSEA SES

Every Wednesday  
Visitors and inquiries welcome  
0408 102 802



## Winchelsea and District COMBINED PROBUS CLUB

Senior Citizens Rooms,  
Harding St, Winchelsea.  
New members always welcome.  
Enquiries Linda 0439 817 263.

## WINCHELSEA TRANSFER STATION

55 Cressy Road, Winchelsea

Monday	Closed	Tuesday	2pm-4pm
Wednesday	Closed	Thursday	2pm-4pm
Friday	Closed	Saturday	1.30-3.30pm
Sunday	9.30-12.30pm		

All waste disposal sites are closed on Christmas Day,  
but open on other public holidays that fall  
during their normal operating hours.

[www.surfcoast.vic.gov.au/disposalsites](http://www.surfcoast.vic.gov.au/disposalsites)



## WINCHELSEA GIRL GUIDES

Our Unit meets at the Catholic Church Hall,  
Harding St Winchelsea each Monday 4.30pm-6pm  
All girls 5yrs- 15yrs Welcome!  
Contact Yvonne Orchard 0448 672 630  
or Bonnie Stokes 0401 386 274



## 1st Modda & 1st Winchelsea SCOUT GROUP

**Joey's:** Tuesdays of school term 5-6pm  
**Cubs:** Mondays of school term 6:30-8pm  
**Scouts:** Tuesdays of school term 6:30-8:30pm  
All at Modewarre Hall, Cape Otway Rd  
**Venturers:** Wed at Walton's Rd Venturer Den  
Contact Marie McPadden 0409 330147



## BUS TO THE HUB

For reservations on the weekly bus  
to the Eastern Reserve Hub,  
please phone 52671202.

## SURF COAST MOBILE LIBRARY

**Hesse St, Fridays, 2pm-5pm**  
Surf Coast Mobile Library  
parked in Hesse Street (outside Shire Hall)  
Fridays 2:00 and 5:00pm unless it is a Public Holiday.

## WINCHELSEA TAXI

0429 672 888 or 5267 2888

Wheelchair accessible  
10 seater bus available.

## WINCHELSEA PLAYGROUP

Every second Thursday 10am-12pm  
St Thomas Anglican Church Hall  
cnr Barwon Tce and Hopkins St, Winchelsea  
Contact: Danni Menzies 0432019944  
[winchelseaplaygroup@gmail.com](mailto:winchelseaplaygroup@gmail.com)  
Facebook - Winchelsea Playgroup 2019  
**New families welcome**



# UNDERSTANDING CARBON ON FARMS

## DEEP DIVE workshop series



### Workshop 3: Energy saving on farm

- **Surf Coast Energy group (SCEG)**- understanding your household ecological footprint using the SCEG Ecological footprint planner
- **Sophie Wright CEO Electrify Victoria**- opportunities for energy saving and emissions reduction on farm and household. Transitioning to renewable energy. Understanding energy requirements and designing a suitable renewable energy system for home and farm
- **Jack Barclay, Managing Director Water Supply Specialists Colac**- the latest in renewable energy water pumping, opportunities to future proof your system. Designing an off grid water supply system for your farm.
- **Will Wolseley, Owner Wolseley Wines Paraparap**- Will has over 30 years of experience developing and running an off grid, renewable energy winery and tourist accommodation venue.

#### **PURCHASE TICKETS HERE:**

<https://events.humanitix.com/understanding-carbon-on-farms-deep-dive-workshop-on-farm-energy>



Contact: Murray Johns  
murray.scipn@gmail.com

Come along to be part of the conversation and hear from local landholders, Surf Coast Energy group and local business, as well as independent advice from Electrify Victoria about decreasing your carbon footprint and saving in energy costs on farm. We will be able to inspect a solar pump for water supply and also learn about household energy audits and how this contributes to your on-farm energy calculations.

We will enjoy a delicious morning tea and lunch provided by our hosts Moshulu Estate who are running their vineyard and wine business off grid.

**When:** 17th May

**Where:** Moshulu Estate  
830 Nortons Rd Paraparap 3240

**Time:** 10am - 2pm

**Cost:** \$15 including morning tea and lunch

\*(Please RSVP via ticket purchases by May 14th)\*



**Surf Coast & Inland Plains**  
Landcare Network



**Australian Government**  
Department of Agriculture,  
Fisheries and Forestry



**Victorian Landcare**  
Grants



# R.A.K. DAVIS & SONS

## CARTAGE CONTRACTORS

WINCHELSEA

SUPPLIER OF ALL QUARRY MATERIALS, TRUCK HIRE

CARTAGE OF GRAIN, LIME, GYPSUM & SUPER

LANDSCAPE & GARDEN SUPPLIES

56 WILLIS ST, WINCHELSEA

Ph – 5267 2094

Ryan – 0438 672 281

Email: rakdavis@bigpond.com



17 Alsop Drive

- ❖ LOG BOOK SERVICE
- ❖ AUTO ELECTRICAL
- ❖ TOWING
- ❖ AIR CONDITIONING
- ❖ CLUTCH & BRAKES
- ❖ TYRES
- ❖ WHEEL ALIGNMENT
- ❖ BATTERIES

### CAR, TRUCK REPAIRS & Roadworthys

PH: 5267 3001

Mob: 0417 137 457

HESSE  
RURAL  
HEALTH



### Volunteers Required

Volunteers are one of Hesse's greatest assets, playing a vital role to enhance the quality of Hesse services & client experiences.

- Bus Driver
- Outings Assistant
- Resident Visitor
- Events & Activities Assistant
- Group Wheelchair Walkers
- Appointment Escort
- Social Support Activities
- Gardening - Winchelsea
- Hospital Auxiliary Member
- Consumer Advisory Committee
- Marketing & Fundraising Committee

For more information please contact Hesse on (03) 5267 1200 or via email reception@hesse.vic.gov.au

**GREAT Bundle Deal on Bosch Hot Water...** FROM ELGAS

Buy any Bosch Bluetooth continuous flow hot water model - 16Litre, 20Litre or 26Litre and Receive \$100\* in Elgas bonus LPG gas credits



From \$780 or \$32.50 per month

\*For more details: www.elgas.com.au/appliances/bosch-continuous-flow-hot-water-sale

AND... for new customers, an additional \$80 WORTH OF LPG GAS CREDITS\*\* when you open a new LPG Gas account with Elgas



\*\*Further details can be viewed at www.elgas.com.au

Ask about the Elgas Easy Payment Plan - 12 months interest free\*\*\* on selected LPG appliances

\*\*\*Further details can be viewed at: www.elgas.com.au/epp

Automatic tanker gas bottle refill OR gas bottle exchange refill is available for home or business...

Call today or visit our website for our many customer benefits and latest offers

131 161  
www.elgas.com.au

ELGAS



### SIMPLE STORAGE SOLUTIONS

- Personal & Business Storage
- Boat, Caravan & Vehicle Storage
- High Security Premises
- Individually Alarmed Units
- Electric Gate Access
- 7 Day Access & CCTV

### YOUR STORAGE PROBLEMS SOLVED

5267 3116

6 ALSOP DRIVE, WINCHELSEA 3241

### Wightons Lawyers

Dispute Resolution & Litigation

Debt Collection

Property Law

Wills & Estates

Powers of Attorney

Business Law

Family Law

By appointment only

22 Willis Street, Winchelsea  
ph. 5221 8777

www.wightons.com.au

# IS YOUR DIGITAL TV FREEZING & PIXELATING?

*We have the latest Digital Technology to help  
you achieve best possible reception!*

## Hi-Gain Antennas P/L

1/21 Leather St, Breakwater

# Ph: 5222 2711

Mon – Thur 7.30am – 4.30pm    Fri 6.30am – 10.30am



**Moriac Veterinary Clinic**

**0447 781 089**

PHONE 24 HOURS

784 Hendy Main Road Moriac

info@moriacvet.com

www.moriacvetclinic.com.au

HOURS // Monday - Friday: 8am - 5pm



# MGT BUILDING & CONSTRUCTION

NEW HOMES | EXTENSIONS | RENOVATIONS

Ph: 0409 433 687



Chiropractic - Remedial Massage - Myotherapy - Sound Healing - Breathwork

## Chiropractic care for:

Stress & Anxiety  
Body Aches & Tension  
Poor Sleep

Pain Management  
Family Wellbeing  
Health Longevity

03 5267 2240 Shop 4/21 Hesse St Winchelsea



<https://onebodychiropractic.com.au/>







**Located at 36 Main Street, Winchelsea 3241**

For any enquires or bookings please contact the clinic on 5292 8028.  
Or visit our website: [www.winchmc.com.au](http://www.winchmc.com.au)

Opening Hours:

Monday - Friday 8:00am - 5.00pm  
(Monday Evening Clinics available and selected Saturdays)



Our clinic accepts online bookings via the app called HotDoc.  
Download the app on the App Store or Google Play or head to our website.

# NATURAL GAS CONNECTIONS

**M. & L DRAYTON  
PLUMBING SERVICES**

**YOUR LOCAL LICENSED**

- PLUMBERS (24356)
- GAS FITTERS
- GAS CONVERTERS
- CARBON MONOXIDE TESTING

**MARK 0428 520 142**

Commercial | Industrial | Domestic

# HAMILTONS

**Truck & Bobcat Hire**  
**Give Aaron a Call**  
**0438 438 623**



Winchelsea and District

## Ebony knows banking

If you need help with yours, you need to meet Ebony.

Ebony shares her knowledge of banking so you can achieve what you want from life.

And, she can meet you when and where it suits you; at the branch, over the phone, or via video call.

**If you need help with your banking, call Ebony Berg, Loan Specialist on 5267 3189 or search Bendigo Bank Winchelsea.**

[bendigobank.com.au](http://bendigobank.com.au)



Bendigo and Adelaide Bank Limited ABN 11 068 049 178, AFSL/Australian Credit Licence 237879. A1415950 OUT\_33710515

### Winchelsea Men's Shed



**For The Community**

**51 Hesse Street**

**Every Wednesday from 9:30am**

**New members always welcome**

**For more detail contact:  
Ray Atkinson (Co-ordinator)  
0407 839 139**

**or**

**[winchmensed@gmail.com](mailto:winchmensed@gmail.com)**

**Need a job done?  
Woodworking jobs,  
furniture repairs, small jobs.  
Drop in and talk to us.**



**Pixie Wash**  
Mobile Doggie Care  
Dogs up to 20kg  
**Pixie Heath**  
**0417 586 080**



# Winchelsea Taxis is now Surfcoast Taxis

Our fleet of vehicles are growing to all late models and we are covering an extended area including Winchelsea, Colac, Bannockburn, Inverleigh, Great Ocean Road and Geelong.

We have a fleet of 10 seater Maxi Vans, all with capacity to carry wheelchairs.

**Surfcoast Taxis Pty Ltd**  
**All Bookings: 0408 325 992**  
**Fax: 5267 2699**  
**Email: bannotaxis@gmail.com**  
 (Admin or Stan 0429 672 888)  
 66A Batson Street  
 Winchelsea 3241



Accounts NDIS provider. TAC, DVA etc

NDIS provider number 4050001044  
 NDIS provider number 4050001048

Book your next ride with **smartHAIL**

Book Track Pay Rate

Available on the App Store GET IT ON Google Play

# Winchelsea Star

ISSN 2202-6851



Since 1977

9177220216850021

## WINCHELSEA LIONS CLUB

### PAPER RECYCLING

Paper depot rear of Senior Citizens Rooms  
 Harding Street  
**NEWSPAPERS, MAGAZINES, PHONE BOOKS WANTED**



RAISING FUNDS FOR OUR TOWN & DISTRICT  
 5267 2011 or 0408 520 606

## M&B WOOD PLUMBING

Call Matt - 0418 319 357  
[mbwoodplumbing.au](http://mbwoodplumbing.au)

### Servicing Winchelsea & surrounds

- General maintenance & blocked drains
- Gas fitting & hot water service upgrades
- New homes & renovations

## DEFIBRILLATORS IN WINCHELSEA

Accessible to the public 24 hours a day

The Winchelsea Lions Club has compiled a list of public access defibrillators in Winchelsea. We are lucky to have more available in town, but these are specifically **publicly accessible 24 hours a day**. If anyone knows any others that have 24 hour public access, please let Linda Carter know on 0439 817 263.



Bendigo Bank  
11 Main Street



Ambulance Victoria  
33 Willis Street



Uniting Church  
33 Hesse Street



Senior Citizens  
36 Harding Street



Men's Shed  
51 Hesse Street



Winchelsea Golf Club  
13 Anderson Street



Hesse Rural Health  
8 Gosney Street



Wurdale Memorial Hall  
220 Wurdale Road

