



# BIG IN JAPAN

富士山  
Mt. Fuji: Fuji-san  
97km

PREVIEW EVENING:  
FRIDAY 16TH MAY  
5PM-8PM

---

Yayoi Kusama  
Takashi Murakami  
Yoshimoto Nara  
Damien Hirst  
Emily Allchurch  
Charlie Haydn Taylor  
Russell Layton  
Stella Griffiths Lynch  
Jason Butler  
Jacques Le Breton

---

OPEN UNTIL 13 JUNE  
WEEKDAYS 12PM - 6PM &  
SATURDAYS 10AM - 3PM

---

Contact Chris Clifford:  
+44(0)7797 714 186  
[chris@privateandpublic.com](mailto:chris@privateandpublic.com)



[privateandpublic.com](http://privateandpublic.com)

# INTRODUCTION

Chris Clifford BA (Hons) MA – Gallery Director

Ever since the Japanese TV series *Monkey* hit British screens in the late 1970's I have become fascinated by the relationship and similarities between these two geographically distanced places. Both are Island nations floating at opposite ends of the world's largest land mass. Both have a rich history of Empire, respected Monarch, are wealthy, highly developed, have extremely high regard for education, are golf lovers, enjoy expensive housing and are famous for being awkwardly polite. The Japanese and British are the world's greatest tea drinkers, binge drinkers, have illustrious automotive industries, famous media personalities, pop music stars and artists. Both countries are also top tourist destinations whilst, ironically, also being widely recognised as being the world's worst at speaking other languages. Maintaining a reserved 'stiff upper lip' and being notoriously stuck in the past are both ingrained features of Japanese and British society. For many years I thought that the strongest cultural connection between these nations was their shared and unquestioning love of 'heritage' but since the 1960's both countries have undoubtedly sought to redefine themselves as cool and contemporary cultural innovators. Today Britain and Japan are seen as quirky and eccentric global brands that have economically risen out of the late Victorian industrial revolution, and the post war

Japanese economic miracle, to become highly sophisticated exporters of their cultural values on the global stage. Of course there are huge differences in architecture and cuisine and much to the annoyance of the British everything in Japan works on time and is highly efficient but nonetheless there is much to connect these archipelagic states. The influence of Japanese contemporary artists on the global art market has never been stronger than it is today with practitioners such as Yayoi Kusama, Takashi Murakami and Yoshimoto Nara making record breaking sales on the primary and secondary markets whilst forging successful strategic alliances with global luxury brands such as Louis Vuitton, Uniqlo and Veuve Clicquot that have elevated art's role in enhancing brand strategy and consumer engagement.

Additionally, the rapid advancement of global capital and new media digitalisation has provided unprecedented opportunities for the integration of art and design, promoting creative interactions between these two regions whilst offering a broad platform for innovative design and aesthetic influence based largely on a Pop Art ethos inspired by consumer culture. Jersey born artist Emily Allchurch's Tokyo Story series, which was recently acquired by The British Museum, pays homage to Utagawa Hiroshige's



(1797-1858) last great work the One Hundred Famous Views of Edo (1856-58). Hiroshige's series was made at a time of huge upheaval in Japan, induced by both the threat and opportunity of Western imperialism. This poetic series of Edo meisho (famous places of old Tokyo) indirectly reflects upon this moment of rapid change and the subsequent pressure on the environment and cultural heritage. Transposing his distinctive techniques of abstraction, vivid colouring and composition into photography, Tokyo Story is Emily's own record of the city from a contemporary perspective. Shot on location in Tokyo, she visited many of the locations depicted in Hiroshige's 'views' and the resulting composite images reveal a gentle social narrative for the city today. Another Jersey born painter, Charlie Haydn Taylor, recently spent several months in Japan at the foot of Mount Fuji on the exclusive Saruya Artists Residency which has led him to produce a new series of paintings which I am pleased to showcase for the first time. The striking Japanese architectural renderings continue to evoke a sense of contemplation and isolation, where the lines between the fictional and autobiographical collide and respond to the emotional weight of isolation that can occur when living in a major city, paradoxically surrounded by millions of others.

This stylistic approach, of using both photography collaged alongside flat block colour paint, is done in order to create a new fictional reality. The inclusion of various objects, ranging from books to letters as well as household objects and consumer products, allows the viewer to form a narrative within each scene, guided subtly by these references. This is also a comment on society's draw to the material, which the artist refers to as "further sacrifices human connections, with technology being a large contributor to this idea".

The exhibition also showcases a unique oil on canvas by the British artist Damien Hirst from his Cherry Blossom series and a playful new work by the Jersey born artist Russell Layton which celebrates the fictional Jersey Festival of Blossom.

Stella Griffiths Lynch has also recently returned from Japan where her studio practise has focused on the culture and fashion of Japan from hairstyles to tea ceremonies and social behaviours.

As the Camelia's and Cherry Blossom Trees are looking at their finest I hope you will find time to visit this unique exhibition and enjoy the displays provided by some of the most interesting and influential artists in Britain and Japan.

# YAYOI KUSAMA

Yayoi Kusama (b. 1929) is a Japanese contemporary artist who works primarily in sculpture and installation, and she is also active in painting, performance, video art, fashion, poetry, fiction, and other arts. Her work is based in conceptual art and shows some attributes of feminism, minimalism, surrealism, art brut, pop art, and abstract expressionism, and is infused with autobiographical, psychological, and sexual content. She has been acknowledged as one of the most important living artists to come out of Japan, the world's top-selling female artist and the world's most successful living artist. Her work influenced that of her contemporaries, including Andy Warhol and Claes Oldenburg.



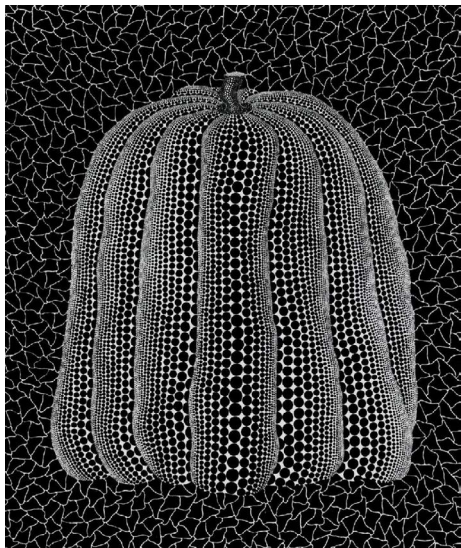


**Pumpkin (YY)** 1996  
Screenprint Edition 17 of 120  
32 cm x 40 cm  
£42,000 +GST

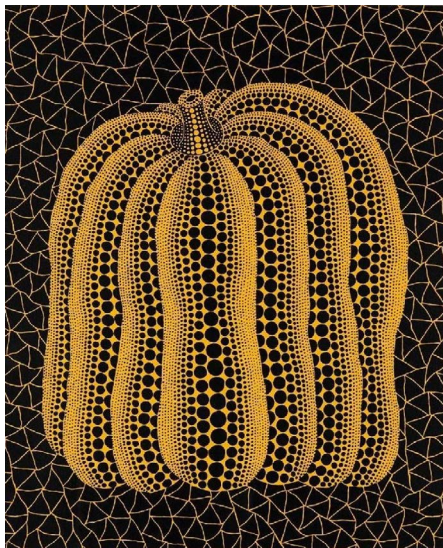


**Pumpkin (RB-B)** 2004  
Screenprint Edition of 80  
24 cm x 28 cm  
£55,000 +GST





**Pumpkin (White)** 1992  
 Screenprint on paper Edition 27/120  
 72.3 cm x 60.4 cm  
 £70,000 +GST



**A Pumpkin (T)** 2003  
 Screenprint Edition 13 of 150  
 45.5 cm x 38.3 cm  
 £110,000 +GST



**Dawn (120)** 1989  
Screenprint  
Edition 88 of 100  
52.8 cm x 45.4 cm  
£45,000 +GST



**Seahorses** 1989

Silkscreen

Edition 38 of 100

61 cm x 53 cm

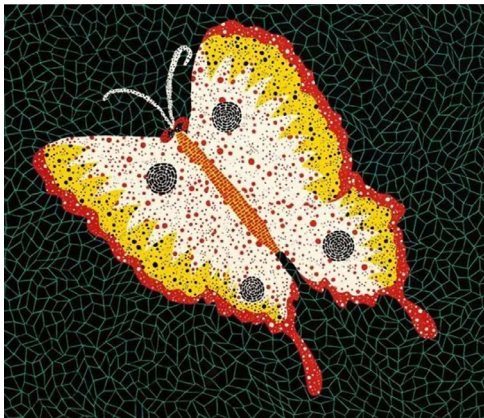
£56,000 +GST





**Tulipe (I) 2000**

Screenprint in colours with lame on  
BFK Rives paper Edition 35 of 60  
65 cm x 50 cm  
£55,000 +GST



**Butterfly** 1985

Screenprint

Edition of 100

46 cm x 53 cm

£27,000+GST



**Lizard** 1989

Screenprint

Edition 91 of 100

45 cm x 52.7 cm

£70,000 +GST



**Flowers** 1985

Screenprint

Edition 50 of 100

72 cm x 65 cm x 5 cm

£55,000 +GST

# YOSHITOMO NARA



## **Miss Spring** 2020

Digital pigment print on  
Takeo Deep PV Hakou paper  
Edition of 100  
27.94 cm x 22.86 cm  
£18,000+GST



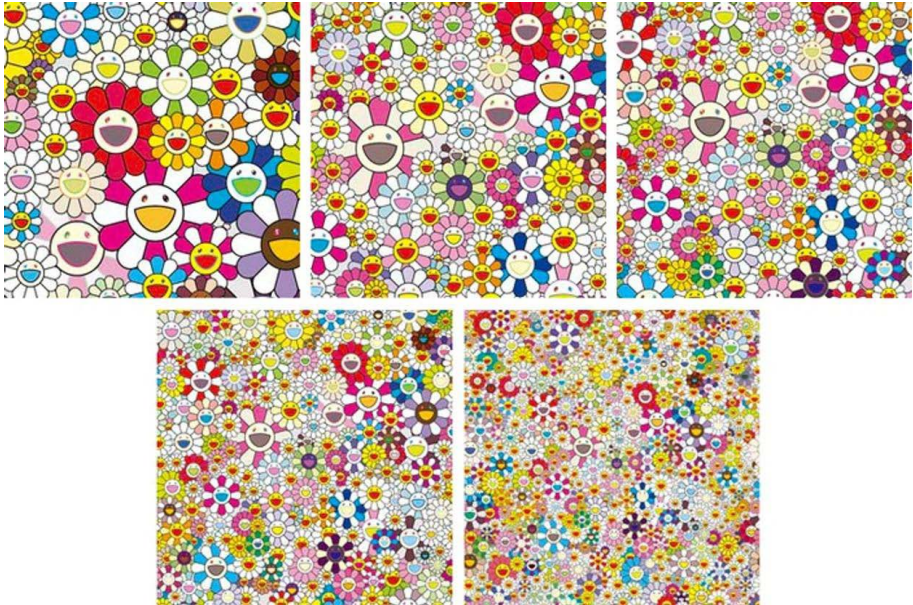
Yoshitomo Nara (b.1959) is a Japanese artist who lives and works in Nasushiobara, Tochigi Prefecture, though his artwork has been exhibited worldwide. Nara has had nearly 40 solo exhibitions since 1984, and his artwork has been housed at the Museum of Modern Art in New York and the Los Angeles County Museum of Art. His most well-known and repeated subjects are "big-headed girls with piercing eyes" who one Nara scholar describes as having "childlike expressions that resonate with adult emotions, their embodiment of kawaii (cuteness) carries a dark humour, and any explicit cultural references are intertwined with personal memories." Nara has the world record auction price for a living Japanese artist of \$25m.

# TAKASHI MURAKAMI



Takashi Murakami (b.1962) is a Japanese contemporary artist. He works in fine arts (such as painting and sculpture) as well as commercial media (such as fashion, merchandise, and animation) and is known for blurring the line between high and low arts. His work draws from the aesthetic characteristics of the Japanese artistic tradition and the nature of postwar Japanese culture. He has designed covers for several hip hop albums and collaborates with many of the world's leading brands such as Louis Vuitton.





**Flowers Blooming in This World and  
the Land of Nirvana (1 - 5) 2013**

5 x Offset lithograph

Edition of 300

49.78 cm x 49.78 cm

£20,000 +GST



**Black Glitter** 2016  
Acrylic on canvas  
Unique  
40 cm x 40 cm  
£80,000 +GST

# EMILY ALLCHURCH

Emily Allchurch (b.1974) in Jersey, Channel Islands, lives and works in Hastings, East Sussex. She trained as a sculptor, receiving a First Class (Hons) degree in Fine Art from the Kent Institute of Art & Design, Canterbury (now UCA) in 1996, and an MA from the Royal College of Art in 1999, where she began working with photography as a material. Since then, she has exhibited regularly in solo and group shows in the UK and internationally. Allchurch uses photography and digital collage to reconstruct Old Master paintings and prints to create contemporary narratives. Her starting point is an intensive encounter with a city or place, to absorb an impression and gather a huge image library. From this resource, hundreds of photographs are selected and meticulously spliced together to create a seamless new 'fictional' space. Each artwork re-presents this journey, compressed into a single scene. The resulting photographic collages have a resonance with place, history and culture, and deal with the passage of time and the changes to a landscape, fusing contemporary life with a sense of history.





**Tokyo Story 4: Interior (after Hiroshige) 2011**

Archival C-type print, mounted on aluminium

Image size: 85 x 60cm. Framed (Museum Glass): 108 x 83cm

Edition of 6 (+ 1 AP)

£5,500 +GST



**Tokyo Story 8: Temple (after Hiroshige) 2011**

Archival C-type print, mounted on aluminium

Image size: 85 x 60cm. Framed (Museum Glass): 108 x 83cm

Edition of 6 (+ 1 AP)

£5,500 +GST





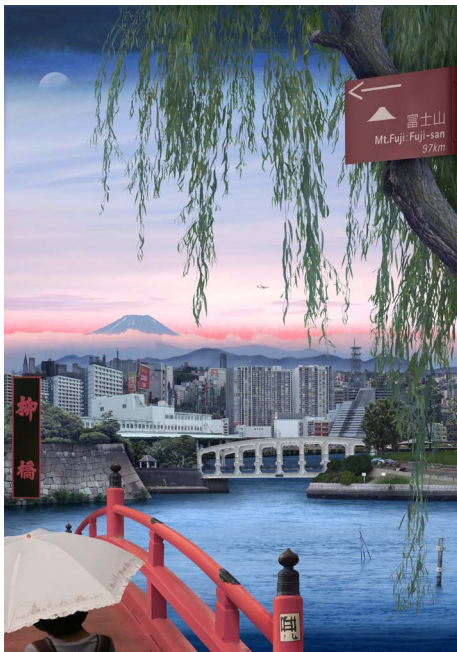
**Tokyo Story 9: Bankside (after Hiroshige) 2011**

Archival C-type print, mounted on aluminium

Image size: 85 x 60cm. Framed (Museum Glass): 108 x 83cm

Edition of 6 (+ 1 AP)

£5,500 +GST



**Tokyo Story 10: Willow Landscape (after Hiroshige) 2011**

Archival C-type print, mounted on aluminium

Image size: 85 x 60cm. Framed (Museum Glass): 108 x 83cm

Artist Proof (Edition sold)

£6,500 +GST



**Tokyo Story 11: Picture Window (after Hiroshige) 2020**

Archival C-type print, mounted on aluminium

Image size: 85 x 60cm. Framed (Museum Glass): 108 x 83cm

Edition of 10 (+ 2 APs)

£5,500 +GST

# DAMIEN HIRST

Damien Hirst (b. 1965) is an English artist and art collector. He was one of the Young British Artists (YBAs) who dominated the art scene in the UK during the 1990s. He is reportedly the United Kingdom's richest living artist, with his wealth estimated at US\$384 million in the 2020 Sunday Times Rich List.



"The Cherry Blossoms are about beauty and life and death. They're extreme—there's something almost tacky about them. Like Jackson Pollock twisted by love. They're decorative but taken from nature. They're about desire and how we process the things around us and what we turn them into, but also about the insane visual transience of beauty—a tree in full crazy blossom against a clear sky. It's been so good to make them, to be completely lost in colour and in paint in my studio. They're garish and messy and fragile and about me moving away from Minimalism and the idea of an imaginary mechanical painter and that's so exciting for me".

**Paper Blossoms 2021**  
Oil on canvas  
59.6 x 42.1 cm  
*Price on application*





# RUSSELL LAYTON

Russell Layton (b. 1971) is a Jersey-based artist who returned to the Island in 1996 after completing his university studies. He was introduced to art by his father, the late Peter Layton, who was an established artist and teacher.

The many other artists who influence Russell's work range from the 19th century Japanese print maker, Hiroshige, through Maurice Noble and other animators of the 1950s and 60s to contemporary artists such as Julian Opie. Russell's work is held in private collections in London, New York, Sydney, Dubai, France and Grouville. His work is also held in the Jersey Heritage Art Collection.

"If there was such a thing as 'The Jersey Festival of Blossom' (there isn't); and if I were asked to produce an image to advertise that Festival (I wasn't); and had I then produced a triptych from that original image, then that work might look something like this..."





**The Jersey Festival of Blossom (triptych) 2025**

110 x 62cm

Digital pigment print on archival cotton paper

Limited edition of 10

£850 +GST

# JASON BUTLER

Jason Butler was born in Nottingham in 1970 and was raised in Jersey. He studied at Bristol University and Cheltenham School of Fine Art and has been exhibiting his work in Jersey and abroad since leaving college in 1993. Jason works from his harbour-side studio in St Helier, Jersey.

Alongside displaying his work in numerous solo and group exhibitions, he has been commissioned twice by the Government of Jersey to commemorate Royal visits and in 2009 was chosen to paint Colin Powell OBE for the Jersey Museum. He has been exhibited on three occasions in The National Portrait Gallery, London, and his work resides in private collections in the UK, Europe and America.





**Seekers** 2023  
Oil on canvas  
38cm x 28cm Framed  
£3,000 + GST

# STELLA GRIFFITHS LYNCH

Stella Griffiths Lynch (b.1998) is a British artist based in Rugby, Warwickshire. Her recent work is an exploration into notions of identity, where intimate moments become shrouded in mystery due to her process of obfuscation, essentially hiding the identity of those featured within the work. This can be considered an homage to artists such as Rene Magritte and Max Ernst.

Having recently completed residency in Japan with Saruya Residency based at the foot of Mount Fuji, Stella has focused her studio practice on the culture of Japan, from hairstyles to ceremonies and social behaviors. Her work shown here, 'Where Quiet Lives', depicts an anonymous figure conducting a matcha tea ceremony. This piece is inspired by a specific event that Stella attended while staying in the city of Osaka, describing the ceremony as "a tranquil epiphany that had a profound effect on her consideration of the Japanese cultural landscape.





**'Where Quiet Lives' 2025**  
100 x 100cm  
Oil on canvas  
£2,500 +GST



# CHARLIE HAYDN TAYLOR

Charlie Haydn Taylor (b.1996) was born in Jersey, Channel Islands and is now based in London and his work evokes a sense of contemplation and isolation, where the lines between the fictional and autobiographical collide. His most recent works respond to the emotional weight of isolation that can occur when living in a major city, paradoxically surrounded by millions of others. The stylistic approach of using both photography collaged alongside flat, block colour paint is made in order to create a new, fictional reality where the inclusion of various objects, ranging from books to letters as well as household objects and consumer products, allows the viewer to form a narrative within each scene, guided subtly by these references.

Since 2020, Haydn Taylor has exhibited extensively in the UK and has formed a strong reputation in Asia, with solo shows in Seoul and Beijing. He is also prominent in the contemporary art scene on the island of Jersey, Channel Islands, where he was born. His work also resides in large private collections including two major royal collections.





**'A Distant Glow' 2025**

102 x 127 cm

Acrylic paint and digital collage on canvas

£5,700 +GST



**'Midnight (Bullet) Train to Nowhere' 2025**

91 x 127 cm

Acrylic paint and digital  
collage on canvas

£5,500 +GST

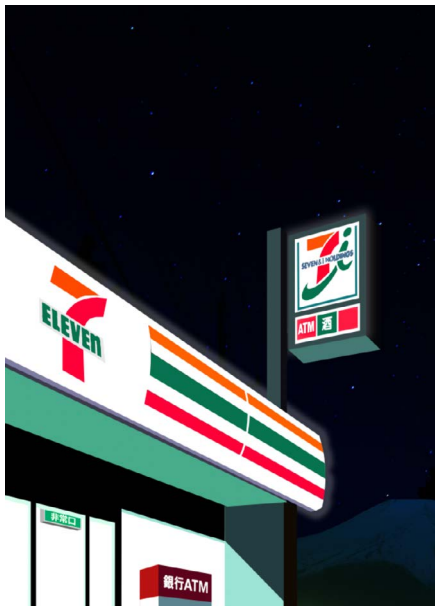


**'Ships in the Night' 2025**

91 x 127 cm

Acrylic paint and digital  
collage on canvas

£5,500 +GST



**'Midnight Voyage' 2025**

76 x 102 cm

Acrylic paint and digital  
collage on canvas

£4,300 +GST



**'Bar Tokyo' 2025**

76 x 102 cm

Acrylic paint and digital collage on canvas

£4,300 +GST



**'Crack of Dawn' 2024**  
 Limited edition print of 15  
 67 x 50cm  
 Hand signed and  
 numbered by the artist  
 £400 unframed, £600 framed



**'Only Us Awake' 2024**  
 Limited edition print of 15  
 67 x 50cm  
 Hand signed and  
 numbered by the artist  
 £400 unframed, £600 framed



# JACQUES LE BRETON

Jacques Le Breton (b.1992) is a Jersey born artist who graduated from the University of Westminster with a first class honours degree in Illustration and Visual Communication in 2015. He currently lives in Jersey and has exhibited with Private and Public several times. His works in this exhibition are a collection of iPad drawings, created when he was visiting Japan for the second time in 2024. He is highly influenced by David Hockney who has been a pioneer in the art world for digital artwork with his own iPad drawings. Whilst in Japan, Jacques enjoyed witnessing the delicate balance between Japan's futuristic present and its rich cultural heritage that is still so prevalent. He felt the iPad was the perfect medium for capturing this feeling with its modern nature coupled with his own impressionistic style.





**Kyoto Side Street 2024**

50cm x 67.5cm

iPad Drawing, Giclee Print Edition of 10

£650 framed, £550 unframed

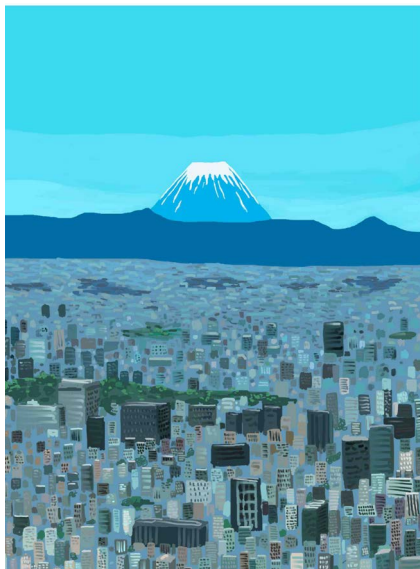


### **Shinjuku Rain 2024**

50cm x 67.5cm

iPad Drawing, Giclee Print Edition of 10

£650 framed, £550 unframed



**Fuji from the Skytree 2024**

50cm x 67.5cm

iPad Drawing, Giclee Print Edition of 10

£650 framed, £550 unframed



**Fuji Above the Clouds 2024**

50cm x 67.5cm

iPad Drawing, Giclee Print Edition of 10

£650 framed, £550 unframed



[privateandpublic.com](http://privateandpublic.com)