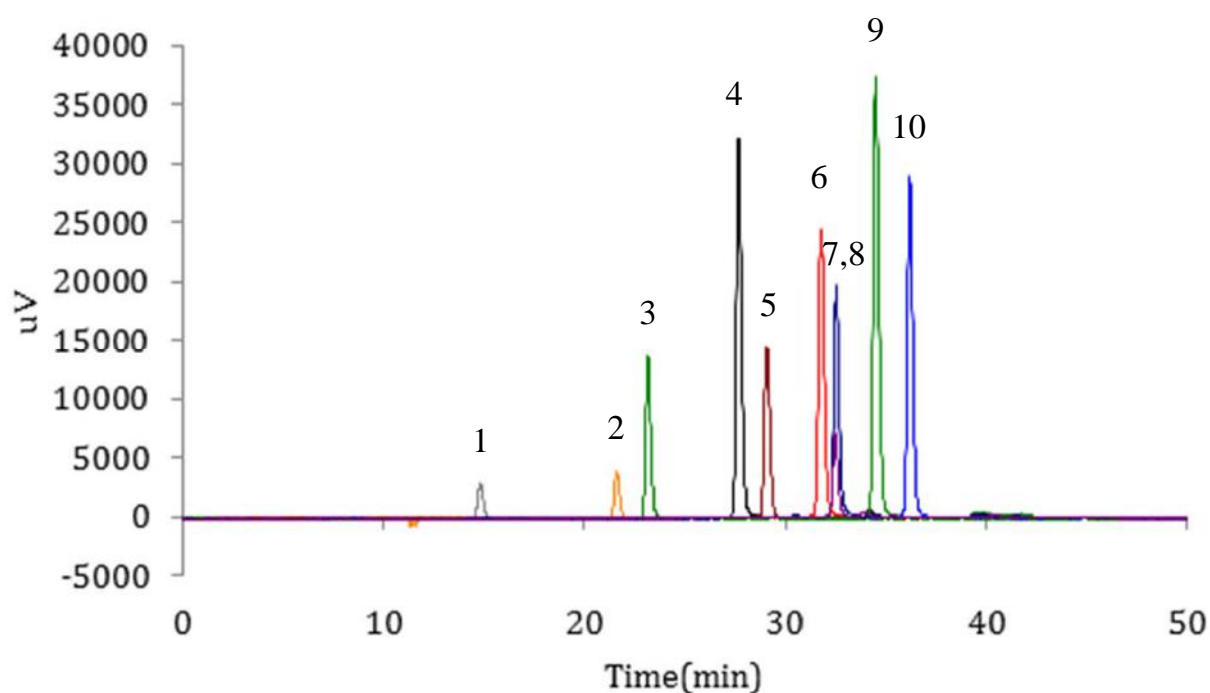


Analysis of Catechins

Data No. LL022-0000

*The chromatogram was provided by Assoc. prof. Shigeki Yoshida,
Faculty of Life and Environmental Sciences, University of Tsukuba,
1-1-1 Tennodai, Tsukuba, Ibaraki 305-8572, Japan*



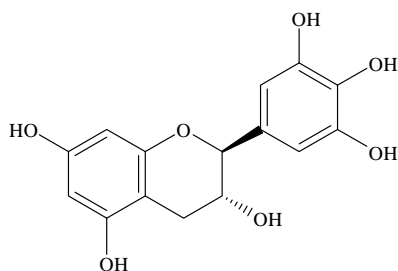
Conditions

Column : InertSustain C18
(5 μ m, 250 x 4.6 mm I.D.)
Column Cat. No. : 5020-07346
Eluent : A) CH₃OH
B) H₂O
A/B = 10/90 - 40 min - 50/50, v/v
Flow rate : 0.8 mL/min
Col. Temp. : 25 °C
Detection : UV 280 nm
Injection Vol. : 10 μ L
Sample : Standard

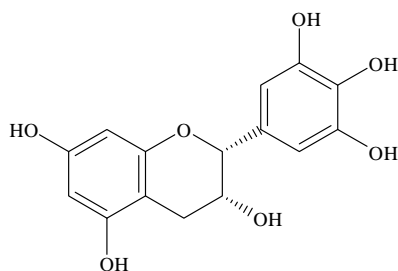
Analyte:

1. Galocatechin (GC)
2. Epigallocatechin (EGC)
3. Catechin (C)
4. Epigallocatechin gallate (EGCG)
5. Epicatechin (EC)
6. Galocatechin gallate (GCG)
7. Epigallocatechin-3-O-(4''-O-methyl)gallate (EGCG4''Me)
8. Epigallocatechin-3-O-(3''-O-methyl)gallate (EGCG3''Me)
9. Epicatechin gallate (ECG)
10. Catechin gallate (CG)
(10 mg/mL each)

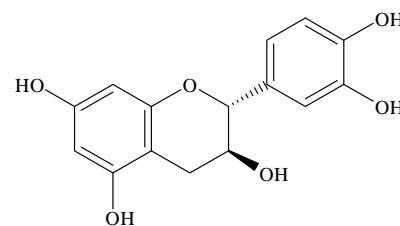
Analysis of Catechins



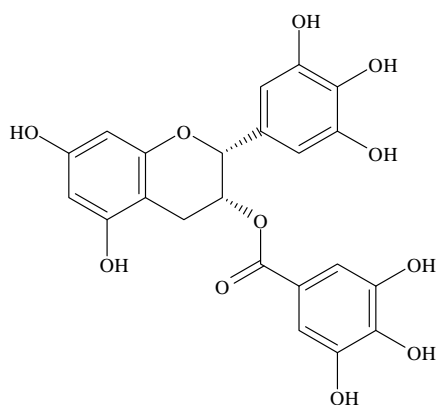
1. Galocatechin (GC)



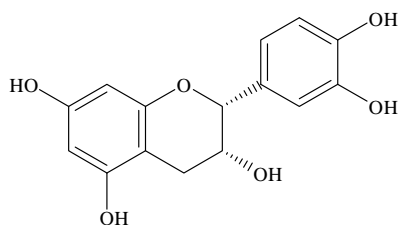
2. Epigallocatechin (EGC)



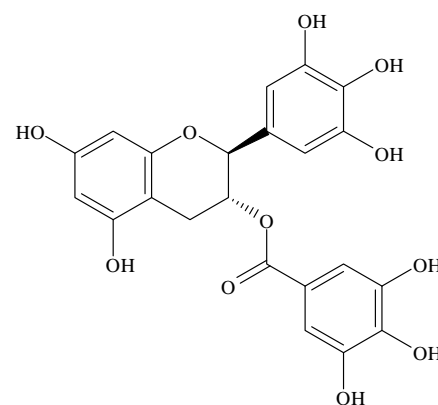
3. Catechin (C)



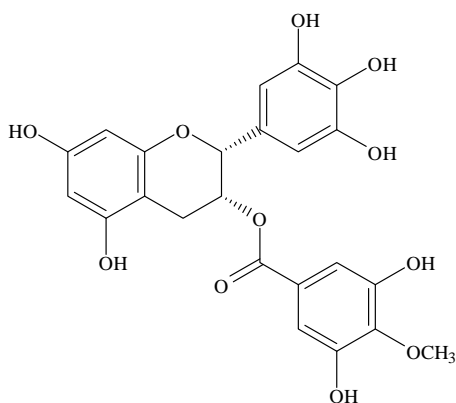
4. Epigallocatechin gallate (EGCG)



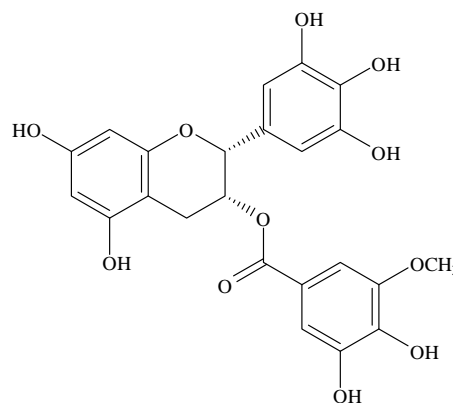
5. Epicatechin (EC)



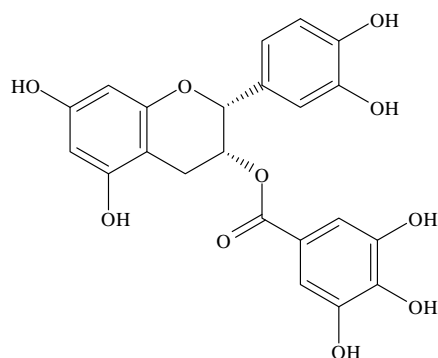
6. Galocatechin gallate (GCG)



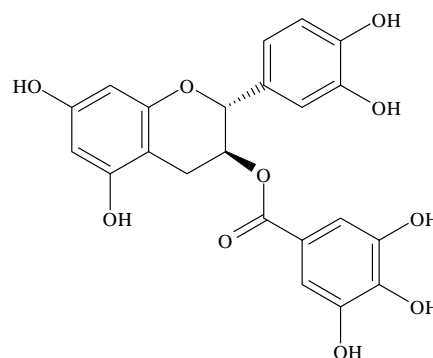
7. Epigallocatechin-3-O-(4''-O-methyl)gallate (EGCG4''Me)



8. Epigallocatechin-3-O-(3''-O-methyl)gallate (EGCG3''Me)



9. Epicatechin gallate (ECG)



10. Catechin gallate (CG)