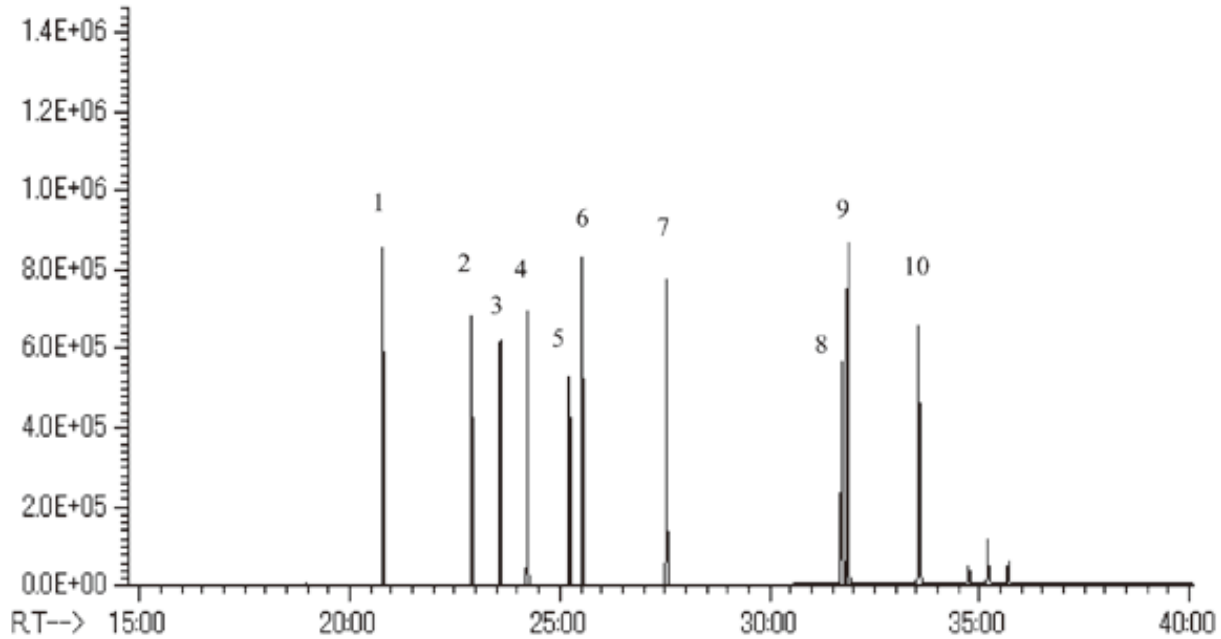


InertSearch™ for GC

InertCap® Applications

Outgas released from LSI Materials

Data No. GA062-0000



System : GC/MS T-Dex II
Column : InertCap 1MS
0.25mm I.D. × 60m df=0.25µm
Column Temp. : 40°C (5min) → 10°C/min. → 280°C (21min)
Carrier Gas : He 1mL/min (constant flow)
Injection : TD/Split 1 : 5
Detection : MS Scan
Sample : STD for clean room air: each 100ng Solvent : Acetone

Solutes : 1. D6 (Dodecamethylcyclohexasiloxane)
2. BHT : Butylated hydroxytoluene
3. DEP : Diethyl phthalate
4. TBP : Tributyl phosphate
5. TCEP : Tris (2-chloroethyl) phosphate
6. DBA : Di-n-butyl adipate
7. DBP : Di-n-butyl phthalate
8. TPP : Triphenyl phosphate
9. DOA : Di (2-ethylhexyl) adipate
10. DOP : Di (2-ethylhexyl) phthalate