



SEARCHING FOR GOD'S HEART
AND SHARING WHAT WE FIND

St Austell Parish Profile

JANUARY 2024



DIOCESE OF TRURO
DISCOVERING GOD'S KINGDOM
GROWING THE CHURCH

Contents



*An introduction
from our Bishop
and Archdeacon*

03 + 04



*Hello from our
Churchwardens*

05



10

06 Our Diocese

07 Our Deanery

08 Our Heart

09 Our Goals & Vision

10 Our People and
Congregations

11 Holy Trinity St Austell

13 St Levan's, Porthpean

14 All Saints, Pentewan

15 Our Parish

16 Our Future Incumbent

18 Our Worship

21 Our Role in
'Transforming Mission'

22 Our Trinity Centre
and Café

23 Our Activities

24 Our Parish Team

25 Our PCC

26 Your Home

28 Local Education

29 Our Communities

29 St Austell & Neighbourhood

30 Porthpean & Neighbourhood

30 St Levan's & Neighbourhood

31 Our Finances

32 Our Properties

35 Our Future Together

An Introduction from our Bishop



In the Diocese of Truro we are deeply committed to following what we call The Saints' Way. We see ourselves as part of a story of the grace of God, made manifest in Cornwall, which stretches back many hundreds of years, possibly to the very earliest days of the Christian faith. It's a story that calls us on into the future too, in loving mission, ministry and service.

As we follow The Saints' Way we will be deeply committed to Christ and to all that he calls us to be and to do; and to Cornwall, this very special place with its own particular culture, history and identity.

We can only follow that way faithfully if we see it as our corporate calling, as the body of Christ, mutually accountable to one another. So we encourage ministers of the gospel to come and join us here who are committed to setting the whole people of God free in their God-given calling, to make Christ known here in Cornwall, today.

So we seek clergy who are faithful in prayer and worship, and who are missional in imagination and heart; those with a pastoral passion for people and communities and their flourishing. We are looking for joyful and hopeful disciples and ambassadors of Christ: people who share the Gospel with energy and commitment, in word and in deed - and above all with love - and who enable the communities they lead to do the same.

We are looking, therefore, for people who, on this journey, are curious and realistic, creative and determined and are deeply hopeful of a better future. But we also want to work with those who recognise that they are not perfect and will sometimes fail, who learn from their mistakes and will take the initiative in seeking reconciliation with others.

We are convinced that all ministers need the support and companionship of others and we help priests in a number of ways so that they never work alone. In this spirit, we encourage those who can forge good relations with others, and actively collaborate with them for the sake of the Kingdom, to join us here in the Diocese of Truro.

I pray that as you consider this opportunity you might discern God's calling and purpose for you in this next chapter of your own discipleship, mission, ministry and service.

A handwritten signature in black ink, reading "Hugh Nelson".

**The Rt Rev'd Hugh Nelson
Acting Bishop of Truro**

An Introduction from our Archdeacon



Under the Saints Way vision the Deanery of St Austell has been engaging in the On the Way process to seek and discern a fruitful and sustainable future under God. The implementation of the resultant deanery plan (approved in the autumn of 2021) is well underway; encouraging progress has been made and the deanery is largely in good heart. Further work needs to happen on appointments and on creating group ministries to enable benefices to work together in a mutually beneficial way.

The appointment to the benefice of St Austell is an important one at a key time, not least because of the role Holy Trinity is able to play in resourcing the whole deanery on its new journey. It is one of the larger churches in Cornwall and has received significant investment as one of five a Transforming Mission hubs in the Diocese of Truro. Yet Holy Trinity is only one of three churches in the parish and it is together that they offer a breadth of opportunities for a priest who is able to think strategically, honour diversity, work collaboratively, offer oversight and invest time in raising up leaders (lay and ordained) to serve the churches and their communities.

A generous and creative approach will be needed to ensure that the churches of this parish continue to flourish and grow, whilst also celebrating the life and health of the wider deanery and its rich offering of traditions and church expressions.

In the parish of St Austell a new incumbent will be well-supported by a gifted team, enjoying the resources of the new Trinity Centre. There will be the challenges of helping each church to take its next step in faithfulness and flourishing and in enabling the gifts, talents and treasures of this hub to ripple far and wide, becoming a blessing to the deanery and 'having the favour of all the people'. The level of need within the parish is such that serving the poorest and those at the margins must also be a priority for the priest and churches.

As further implementation of the deanery plan takes place there is an awareness that some aspects may need further discussion and amendment to ensure that every benefice has the best opportunity to be fruitful in mission and ministry. The new incumbent will want to take their place in continuing to shape the life of the deanery alongside colleagues lay and ordained.

If this profile sparks your imagination and you are ready for a new adventure in response to the leading of the Holy Spirit, you may like to get in touch for an informal conversation.

K Betteridge

**The Ven Kelly Betteridge
Archdeacon of Bodmin**

Hello from our Churchwardens



*Hello! A very warm welcome from us both.
Thank you for your interest in our Parish.*

*We trust our Profile will be a good source of
information as you pray and consider whether
St Austell could be your next home.*



Sara
Moulton



Bonnie
Zaphiriou

This is a strategic post, in one of the most significant locations in Cornwall. Our Parish is playing its part in the renewal and growth of the Cornish Church, appointed by the Diocese and the Church Commissioners to be a 'Transforming Mission' hub.

*We have three worship centres. Each has its own flavour and all are committed to seeing people become **wholehearted for Christ**.*

Undergirding all we do is a strong emphasis on the ministry and gifts of the Holy Spirit, an eagerness and love for the Word of God and a desire to deepen our missional relevance to our community.

Our Vision 2023-26 crystallised in February 2023, in a process rooted in our congregations, enabled by our staff and endorsed by our PCC. It is the framework for our future and we hope it inspires you. Its basic elements are embedded throughout this Profile.

We are praying for a Vicar who will be open and undefended, an encouraging and dedicated leader who will inspire us as we move from vision to action. You will be passionate about Jesus, excited about building on the strong foundations already in place here and confident to lead us further in our mission to our communities and in our growth as people of God.

For many years we have been a training parish and so we look to you to help us continue that tradition.

We hope that our Profile will encourage you to consider joining us and by so doing to play a pivotal part in our unfolding story.

Our Diocese

Truro Diocese comprises 12 Deaneries in 2 Archdeaconries. Our parish is in the Archdeaconry of Bodmin.

The vision of the Diocese is The Saints' Way with five key priorities:

- celebrating children and young people
- embracing an innovative pioneering culture
- being confident in its calling
- strong, warm and mutually encouraging international links
- rejoicing in the generosity of God

The Saints' Way's implementation route **Next Steps On The Way** is through individual Deanery plans (all now complete).

The most pronounced common themes across all deaneries are:

- connecting with families and young people
- increasing practical service to and with poorer communities
- greater shared ministry between ordained and lay people

The Diocesan Plan aims to:

- encourage the common deanery themes above
- address areas benefitting from a diocesan involvement – e.g. dealing with church buildings
- support opportunities to which some deaneries are committed and which could be enhanced, or shared more widely



Transforming Mission

TM is part of the vision to create thriving church communities that welcome and support people whatever their stage of life, background or previous experience of church.

TM is enabling church communities to spill out of their own walls to proclaim good news, serve their communities, resource and bless other churches and be the catalyst for growth in discipleship, evangelism and community-building.

St Austell Parish is one of five TM hubs in the Diocese. See page 21 for more information.

Our Deanery

St Austell Deanery comprises 3 areas (East, Central and West). We are part of the Eastern area.

The Deanery has varied geography and a diverse socio-economic profile.

Benefices in the north are located in clay-country, a landscape of open-pit clay mining and villages associated with the industry. Other benefices are embedded in urban or suburban townscapes and others again in attractive, tourist destinations. Remarkable attractions such as The Eden Project and The Lost Gardens of Heligan are in the Deanery.

The Deanery has adopted its own Plan, approved by Bishops' Council. The vision is: "A Church that is equipping God's people for relationships with God, One Another and the Local Community".

The Deanery is pursuing certain key steps:

- Establishment of a new Leadership Development Centre
- Oversight ministry by 6 full-time clergy/clergy equivalents, 2 in each area
- Local leaders and support for all 23 churches
- Establishing a culture of partnership
- Deploying LICF (lower incomes community fund)

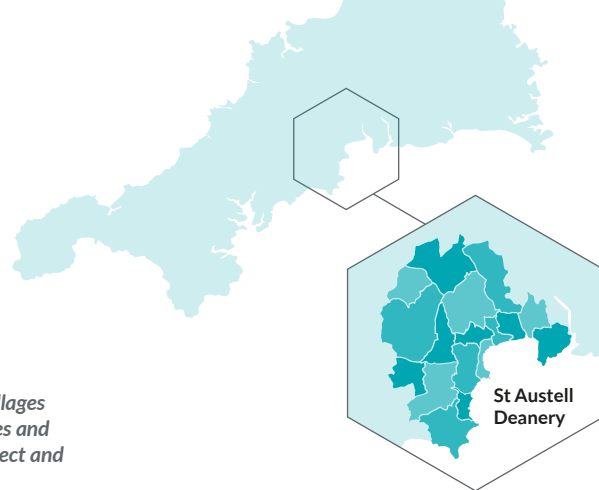
A Deanery Implementation Team encourages implementation of the plan. Sub-teams of the DIT follow up on:

- Leadership Development Centre
- Buildings
- Poverty and LICF
- Intergenerational and Transforming Mission



Our Deanery Chairs write:

We are excited at the key role St Austell Parish plays as part of the Diocesan Change and Renewal Programme, Transforming Mission. Over the next few years there will be new and exciting opportunities to transform the way we carry out worship in our Deanery, with resources helping that become a reality.



We are looking forward to working with the new Vicar here. You'll find a Chapter that is supportive, which values encouragement and meals together rather than simply downloading information. You'll also find a parish that is growing, keen to seek new ways of working, eager to collaborate with other churches and with the Deanery as a whole.

Looking forward to welcoming you and working with you.



Mike Rowe
(Lay Chair)



Paul Zaphiriou
(Rural Dean)

Our Heart

Our recently adopted 4-year Parish Vision is the foundational framework on how we move forward in the season we have entered.

We are looking for a Vicar who will gladly accept that this is our point of reference for the next few years and will be excited about leading us into that future.

In summary:

OUR VISION:

We want to SEE people become wholehearted for Jesus

OUR MISSION:

We want to SEARCH for God's heart and SHARE what we find

OUR DNA:

- We want to DEMONSTRATE God's love and be undefended
- Welcoming the Holy Spirit
- Engaging with our community – seeking righteousness and justice
- Inviting all to play their part
- Being ready to learn
- Hearing and following God

**This we commit to do in Faith, Hope and Love:
these are our VALUES**



Safeguarding is paramount at all times

Our PCC has adopted the Safeguarding Policy of the Diocese of Truro. In our churches, our activities and our fellowship the welfare of children, young people and vulnerable adults is at all times paramount and takes precedence over any other consideration.

We are all committed to:

- Promoting a safer environment and culture;
- Safely recruiting and supporting all those with any responsibility related to children, young people and vulnerable adults within the parish;
- Responding promptly to every safeguarding concern or allegation;
- Caring pastorally for victims/survivors of abuse, and other people affected;
- Caring pastorally for those who are the subject of concerns or allegations of abuse, and other people affected; and
- Responding to those who may pose a present risk to others.

All our staff team as well all the relevant volunteers are up-to-date on their required safeguarding training.

Our Goals & Vision

Given our Heart, the following are our Goals:

1

RENEWAL AND GROWTH

Spearheaded by Transforming Mission

- Training and discipleship especially for the missing generations
- More worshipping communities; potential church planting
- Partnerships in the Deanery

2

DISCIPLESHIP

- Discipling the younger generation
- Raising up leaders
- Training and releasing teams

3

PASTORAL CARE

- Nurturing families
- Reaching the marginalised
- Expanding volunteers; no giftings overlooked



4

LEADERSHIP DEVELOPMENT CENTRE/ SCHOOL OF MINISTRY

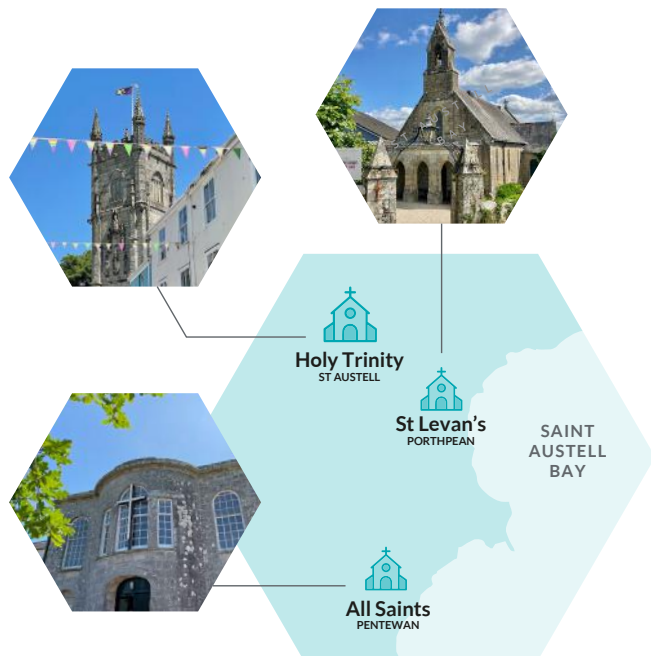
We will establish a Training and Development Hub in the Trinity Centre to deliver several modules including:

- Pastoral and Systematic Theology
- Apologetics
- Leadership & Strategy
- Evangelism
- Intergenerational Church
- Biblical Studies
- Church Growth and Sustainability
- Structuring outreach
- Structuring gatherings
- Music and Worship
- The Role of Technology

“ Love abounding
in all we do.”

Our People and Congregations

St Austell Parish gathers in three locations in and around this historic market town. Our patron is The Crown.



Our purpose is simple: to be wholehearted – in worship, in friendship, in mission and, most importantly, in love – for our parish.

Our offer to our communities:

We run groups, courses and gatherings for everyone; we are certain there will be something for you. Our churches will never be too full for you: the invitation is always open. Come and see what we are all about!

We are multi-generational with a strong cohort of children and young people, particularly in HT, yet also with worshippers who remember first coming to church in the 1950s. We have a mix of people from varied backgrounds, ethnicities and life stages; locals, regular visitors, and those just passing through. We love them all.

Starting in late 2022 all our congregations have been invited to engage with a programme of APEST assessments: a profiling tool designed to assist in finding one's ministry style in relation to the fivefold ministry which Paul identifies in Ephesians 4 (Apostles, Prophets, Evangelists, Shepherds, Teachers). We continue scheduling meetings in this programme.



As a consequence a growing majority of the congregations' members have a clearer understanding of the function into which they are most clearly called to operate in our combined ministry and mission.

Five teams, one for each of the APEST functions, are now operating and are considered key in ensuring maximum involvement across our congregations as we aim to deliver on our missional goals.

Holy Trinity St Austell

In recent decades HT has become known for its biblical teaching, for its nurturing of new leaders, for its broadened mission and outreach and for its resourcing potential for other parishes in its area.

Our parish flag is usually flying from HT's Tower. Its design displays a map of Cornwall with an eagle flying over it, wings outstretched.

This proclaims that God sees our hearts, that He is protecting us and stirring us up to grow and become the people He intended.

Our fellowship is multi-generational, with a good cross-section of all ages. We are united in our eagerness to encounter God and in our determination to ensure that our children and younger people are given every opportunity to thrive, grow in their faith and establish healthy friendships.

There are several strands of engaging and nurturing children and young people which happen at HT and which are mentioned throughout this profile. We set a very high store by our young people's work and are pleased that our current youth intern will be joined by a colleague in September this year.

We feel entirely at ease with the ministry of the Holy Spirit in our midst and encourage participation in prayer and prophecy at our gatherings, with appropriate oversight.

We are truly passionate about evangelism. We wish to encourage as many people as possible into a relationship with Jesus Christ.

One of our aims therefore is to retain as low a barrier as possible to newcomers wishing to see what it's like to be in church on Sundays. As a result, formal liturgy is deliberately limited at those gatherings, which are relaxed and informal.

We highly value participatory church and encourage the broad yet structured involvement of as many people as possible on our teams and in our worship.



Holy Trinity St Austell

As part of our approach to reducing barriers to people exploring church, HT's pews are now mounted on wheels and positioned laterally in the side aisles while seating in the centre of the nave is on chairs.

We have a sophisticated audio-visual set-up including TV screens, a projector and large central drop-screen and a comprehensive, up-to-date sound system; this allows us to dispense with the distraction of service sheets or song books.

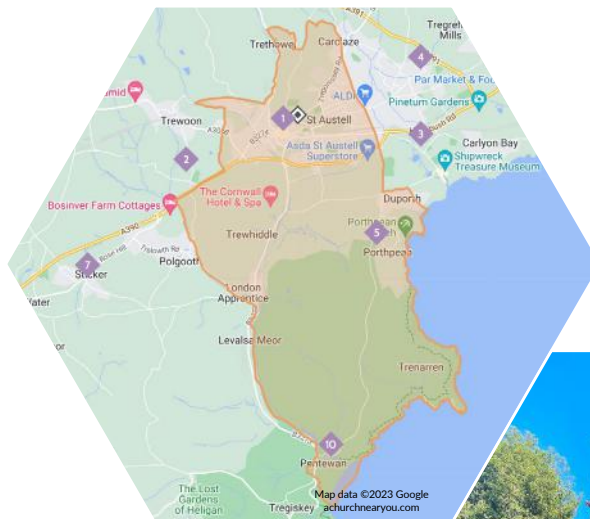
Our full kitchenette allows us to serve refreshments, biscuits... and cake (cake is a key element in many of our meetings), energising the gift of hospitality.

We love it when our church is used for alternative activities and events such as for our Sunshine group of toddlers and parents/ carers, for art groups and exhibitions, concerts or civic occasions. Many of us make it a point to participate in groups and activities which are deliberately open to non-churchgoers

The church is open every day and visitors often take time to come in, walk around, sit, even pray we hope. We deploy the Parish Giving Scheme and have also introduced a card reader. The congregation has continued to be generous through the COVID period and beyond.

Our biggest challenge is:
growing the congregation intergenerationally

Our main strength is:
our preparedness to embrace change in our encounters



St Levan's, Porthpean

The worshippers at St Levan's are a lively, faithful, growing group of mostly older Christians, including three retired PTO priests and their spouses and one of the churchwardens.

We are led by an Assistant Minister, a very experienced Reader drawn from the Holy Trinity congregation and appointed by the Vicar in 2019.

There are now some 40 of us on the parish's electoral roll and on any Sunday we number between 20 and 30 at our 9:45am gathering.

We value some traditional elements in our worship: confession, absolution, declaration of faith, intercessory prayer and the Lord's Prayer and we prefer to sit down between worship songs, but the tone of our gatherings is friendly, informal and, we are told, welcoming. St Levan's is included in the Parish preaching rota so we follow the same themes and teaching as Holy Trinity and benefit from the full range of leaders and preachers. Technology allows us to have musical accompaniment to an ever-widening range of songs and hymns, though we are occasionally lucky enough to have an organist. If technology fails us, we confidently make a joyful noise.

We have a card reader in the church - convenient for visitors to our picturesque church on the SW Coast Path but also useful for the congregation.

We are an integral part of the parish, committed to the Vision. An increasing number of us attend HT for joint gatherings and participate in Connect groups, the PCC etc.

Not all have felt the need to be identified by their APEST gifting, though there is a highly developed self-awareness of calling from which we benefit widely. Our fellowship is marked by eagerness to contribute and participate and we have been blessed with a season of calling forth, where individuals have grown and led aspects of worship.

We are characterised by our willingness to try new ideas and by our generosity with our time and life skills: no sooner do we notice something needs doing than it has unobtrusively been done by one sharp-eyed individual or another.

Our small group, dubbed Homegrown, meets weekly for prayer and discussion, and consists of a dozen people with four to six usually attending. It proved a lifeline during Covid lockdowns when we met over Zoom.

Though the church is located in Higher Porthpean, most regular worshippers do not live in the village.

The church is open;
please come in.



Well behaved dogs
are welcome!



We have a sense of mission to the village residents, many of whom attend at the seasons of Christmas, Easter, Harvest and Remembrance, and we have issued a general invitation to the community to use the building for events such as meetings, book and bake sales etc, several of which have taken place.

Our biggest challenge is:
growing a more diverse
and local congregation

Our main strength is:
the nature of our
location

All Saints, Pentewan

All Saints Church is a 200-year-old building looking out over the village of Pentewan, its holiday campsite and the surrounding coastline.

The village is a distinct rural and coastal community but about half of the houses are now holiday lets.

Currently, services are held on major festivals, led by a variety of service leaders and preachers from Holy Trinity, with the contribution and involvement of local members.

Attendance is usually around 30 and the gathering is based on Common Worship. An organist accompanies the hymns.

A number of attendees come from the wider surrounding area, attracted by our more traditional form of churchmanship.

Refreshments are available after each service and the community spirit amongst us is strong.

Our biggest challenge is: reviving worship in the village and the holiday camp.

Our main strength is: our outstanding location on the SW Coast Path - an official Walker's Church overlooking Pentewan Bay.

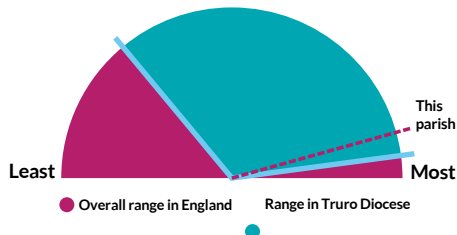
Electoral Roll: The combined roll for the parish stood at 164 as of March 2023.



Our Parish

Statistics. The Church Urban Fund website provides recent demographic and socio-economic information regarding our parish.

The population is about 12,600 (this is about 50% of the town's total). It is one of the most deprived parishes in England; this graph indicates our Overall Deprivation:



See <https://cuf.org.uk/parish/390165> for more information regarding life expectancy, poverty, education and other demographics.

One statistic to note in Cornwall generally, and mirrored in the parish, is the low level of ethnic diversity when compared with the whole country though this is increasing. There are issues with homelessness, food and energy poverty and housing affordability.

The recent BBC programme by Simon Reeve "Return to Cornwall" is an informative introduction to some of the challenges facing the county: <https://www.bbc.co.uk/iplayer/episodem001ksc3/simon-reeves-return-to-cornwall>

Socially deprived neighbourhoods sit cheek-by-jowl with luxury housing developments, disadvantaged areas are to be found next to famous leisure destinations. Post-industrial grey-scapes exist next to outstanding natural beauty-spots. Our parish is a microcosm of this reality.

- In **Pentewan**, bijoux converted properties co-exist with a large holiday camp whose transient population dwarfs the village from Easter to September.
- In **Porthpean**, the village is experiencing the inexorable conversion of its housing stock from local residential to absentee landlord for AirBnB and other short-term holiday lets.
- In **St Austell**, the town we love is struggling to find and express a renewed identity and is grappling with deep social inequalities; meanwhile the Eden Project and the World Heritage Site of Charlestown Harbour, each only a couple of miles away, attract streams of seasonal visitors...

The disadvantaged and challenged in the community command our attention and we aim to serve them in a number of ways, which currently include:

- Our partnership with Christians Against Poverty (CAP), which runs from the Trinity Centre in collaboration with White River Community Church, aims to provide practical advice to those facing financial challenges with debt
- Our help to parents, delivered partly through our Sunshine group but also in other ways such as Kids Matter, Holiday Clubs and Family Tea-time
- Our support of local charity STAK in its programme to provide food to those in need <http://www.stakstaustell.org.uk>

We know there is room for our deeper and broader involvement in this area and are praying and planning in that regard.

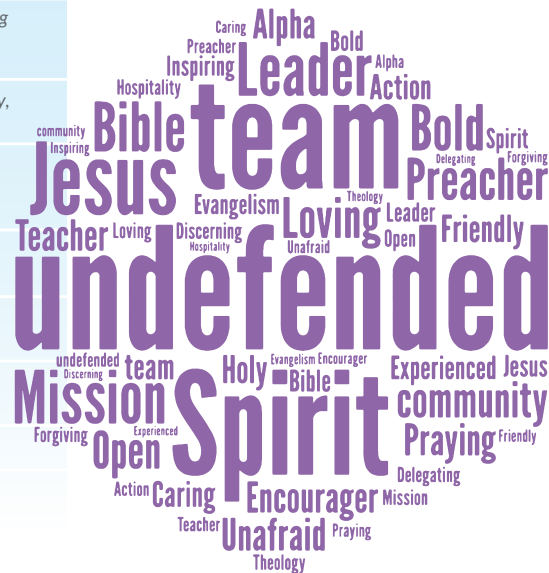
OTHER CHURCHES IN ST AUSTELL INCLUDE:

- St Augustine of Hippo Roman Catholic Church <https://www.augustineofhippo.com>
- White River Community Church <https://www.wrcchurch.org.uk> which is the outcome of South Coast Church and St Austell Baptist Church joining in June 2022 to form a united worshipping community.
- St John's with Trinity Trewoon Methodist Church <https://staustellmethodist.co.uk/churches/st-johns>
- The Salvation Army
- The Society of Friends (Quakers)
- Light and Life <http://lightandlifestaustell.co.uk>

Church leaders meet once a month for fellowship and prayer. There are regular meetings of Churches Together.

We are praying for a Vicar, female or male, who will share this commitment.

This word cloud amalgamates desirable attributes referred to in this document with those discerned through the prayer life of the parish as it journeys through the vacancy.



Our Future Incumbent: who we're looking for...

	Essential	Desirable
Knowledge and Skills	Knowledgeable in and committed to excellent safeguarding practice.	Able to encourage and develop contextualised styles of worship and outreach.
	Visionary and strategic with the ability to communicate and enable change.	IT literate and comfortable in using and engaging with new technology.
	A good preacher, offering theologically challenging teaching and explaining complex issues clearly.	
	Confident in talking about giving and finances, encouraging planned giving as a mark of discipleship.	
	A good communicator and listener, caring and discerning. Unafraid to engage in difficult conversations in an honest and charitable way. A reconciler.	
	Experienced in developing discipleship pathways including small groups.	

	Essential	Desirable
Personal Qualities	Mission-focused with a strong desire to bring people to faith.	Demonstrating the gift of hospitality.
	Undefended, with a high degree of self-awareness.	Full UK driving licence and access to own transport.
	Passionate for children, youth, the suffering and the outcast.	
	Committed to prayer and spiritual growth.	
	Understanding and committed to the strategic objectives and Plan for Change and Renewal of Deanery and Diocese.	
	Reliable in commitment- and time-keeping. Reachable.	
	A passion to strengthen intergenerational church.	

Our Worship

Our three Worship Sites are:

Holy Trinity (HT) in St Austell town centre, St Levans (STL) at Porthpean and All Saints (ASTS) at Pentewan.

Having three sites, we worship in a variety of styles, some more traditional and others modern and contemporary but always with the singular focus of searching for God and making him known in Jesus Christ.

OUR GATHERINGS

We gather to worship in the following pattern:

Sundays weekly	09:15-10:30	HT
	09:45-10:45	STL
	11:00-12:15	HT
Festivals	11:00-12:15	ASTS
Wednesdays fortnightly	19:00-20:30	HT
Thursdays weekly	11:00-12:15	HT

SUNDAYS AT HT

Worship at HT on Sundays is in a charismatic evangelical style, with two gatherings, at 09:15 and 11:00. The first gathering attracts around 30 people and the second around 100 when we include the children and youth.

These gatherings are led by a band, with contemporary arrangements of songs/hymns, open intercessions, a 20-25 minute talk, and

prayer ministry. Both gatherings have the same content. We celebrate Holy Communion twice a month.

To facilitate mingling and fellowship between the two congregations, there is coffee between the two timings, 10:30-11:00am.

The Worship Leader with the other musicians lead us in a mix of mostly contemporary songs but with a few modern and traditional hymns included. The talk is Bible-based, engaging, contemporary and aims to be highly relevant. An invitation to prayer ministry is always included at the end of both gatherings.

We have a full-time Pioneer Worship Minister who is employed as part of Transforming Mission (TM). His remit has been to develop the worshipping culture in 4 ways:

- A more contemporary style to be appealing and accessible to the unchurched and the missing generations (children, young people and families)



Let the message of Christ dwell among you richly as you teach and admonish one another with all wisdom through psalms, hymns, and songs from the Spirit, singing to God with gratitude in your hearts.

- A greater reliance on being Spirit-led during our gatherings particularly during sung worship aiming for open receptiveness to the Holy Spirit
- A greater confidence in congregational contribution during gatherings valuing the gifts of the Holy Spirit. This includes space for personal/individual worship, songs/prayers that edify others and an openness to the prophetic (sharing what the Holy Spirit reveals).
- A focus on developing emerging musicians as band members and eventually Worship Leaders.

Our Worship

There is a full Sunday programme for children and young people at 11:00 in HT; early in the gathering their groups leave the building and meet in the Trinity Centre across the road – the creche stays in the vestry with an AV link to the church. The same Bible passage is preached from at each gathering in any week.

HT'S SUNDAY GROUPS ARE:

- Trinity Tinies for little ones 0 - 2s (creche room at HT)
- Trinity Kids for 4 - 10s
- Trinity Youth for 11 - 16s

Trinity Kids and Trinity Youth programmes run in Trinity Centre. A 'Sundays @ The Loft' evening cluster of young people meets weekly for a relaxed, youth group-style gathering.

All Age Worship gatherings are held every two months, when our younger members become involved in virtually every aspect of the gathering. We are also in the early stages of developing a youth band. Once a quarter we have a 'bring and share' lunch in HT.

WEEKLY SUNDAYS AT ST LEVAN'S

(please also see page 13) follow a Common Worship structure for Morning Prayer on Sunday or for Holy Communion, with a mix of hymns and more contemporary worship songs

and a shorter talk – the current record is 7 minutes!

Recently we have started to move from organ-based laptop accompaniment to band-based accompaniment using Spotify and iSingWorship.

Screens also allow sermon slides, videos and digital adverts to be shown, improving the communication of events and activities parish-wide.

FESTIVAL SUNDAYS AT ALL SAINTS

(see also page 14) also follow Common Worship's structure; hymns are accompanied on the organ and the talk is around 15 minutes.

There is a Eucharistic service every week at one of the gatherings in the parish.

WEDNESDAYS

The fortnightly Wednesday gatherings at HT (**Radiant**) are unstructured and informal, led by a worship leader and second musician. Their focus is on sung worship, prayer and prophecy (listening to the Holy Spirit). Attendance is around 30. There is no talk. Prophetic words and pictures are written down and fed into the broader worshipping life of the parish.

THURSDAYS

Weekly Thursday morning gatherings at HT (**Thursday @ 11**) are more contemplative; with a mixture of hymns and choruses (accompaniment provided by Spotify) for sung worship, the talk and prayers led from the front. They are as accessible to newcomers as our Sundays, though the workday timing leads to an older profile. Attendance is about 30.

On Thursdays at STL a group of about a dozen members, **Homegrown**, meets at the church to deepen fellowship, pray together and reflect and share on the previous Sunday's talk and worship.



Our Worship

PREACHING AND LEADING

Our preaching can be exegetical or thematic, firmly rooted in Scripture and offering relevant, contemporary applications. We encourage those with a gift for leading and preaching to develop their ministry across our three sites, offering training and growth opportunities.

MUSIC

Sung worship is central to our gatherings. Those who lead in this ministry are encouraged to hold the vision for the worship time, with oversight from the Vicar or Gathering Leader.

There are currently 10 musicians on the worship team at HT. They include drums, bass guitar, electric guitar, acoustic guitar, keyboards, trumpet and vocals. At present we have 3 worship leaders who lead from guitar, keyboard or bass.

The band use in-ear monitoring enabling them to play along to click and backing tracks. The worship leader can have all instruments available, even if many of the team are away (albeit some being played virtually). Backing tracks are operated by the worship leader. Nevertheless, many songs are simply played entirely live.

The sound team have control of both live and virtual musicians allowing them to mix seamlessly.

There are currently 4 people on the sound rota (1 per Sunday), mixing the in-room sound using a digital desk, and handling audio to the YouTube livestream.

The media team also consists of 4 people (1 per Sunday) responsible for operating the cameras, lyric projection, screen adverts, videos, and the live transmission.

The Sound and Media teams are overseen by the Pioneer Worship Minister.

All 3 churches have an integrated organ, each well maintained. They are in occasional use for gatherings including Remembrance Sunday and Christmas Carol services.

Examples of our gatherings at HT can be found on our YouTube channel at: <https://www.youtube.com/@StAustellParish/streams>

PRAYER MINISTRY

We place a very high value on prayer ministry, at HT especially. We have a dedicated prayer ministry team and run regular prayer ministry training, open to all our members, though membership of the Prayer Ministry Team is through invitation and following safeguarding (DBS) checks.





Our Role in 'Transforming Mission'

We are one of 5 hubs in the Diocese earmarked and funded as a resourcing centre for Transformation and Growth.

We are privileged to be a Transforming Mission parish.

TM is a developing model for the renewal of Anglican church life across the Diocese of Truro's communities. See: <https://trurodiocese.org.uk/rsources/next-steps-on-the-way/tm/>

Our TM project receives significant resourcing from the Church Commissioners (see: <https://trurodiocese.org.uk/2019/06/church-commissioners-back-bold-plan-to-transform-mission-in-cornwall/>) which is augmented by Truro Diocese and, increasingly over a 6-year horizon started in 2021, by a parish contribution.

TM operates from Holy Trinity through 5 staff and 2 interns – see Section on Team, page 22. TM staff also support the parish's day-to-day operations. TM outcomes are measured against periodically agreed targets.

TM's engagement is focused on pioneering mission, including ongoing programmes, one-off or seasonal events and deanery support, with a

strong yet not exclusive emphasis on the emerging generations; they indicatively include:

PROGRAMMES:

- Alpha (Seeker Programme x 3 per year; intergenerational)
- Sunshine (Mums and Toddlers weekly group)
- Soul Life (Youth evening)
- Youth at the Loft (Older Youth evening)
- Young Adults' ('Grain') worship night
- Youth Band
- 'Woven' (Teenage girls' discipleship group)
- Grain Community (Young Adults weekly group)
- Radiant (Fortnightly mid-week prayer and worship)
- Kids Matter

OCCASIONAL, REGULAR AND SEASONAL EVENTS:

- Tea Time (A warm space and a free meal for families)
- Easter Fun Day
- Holiday Club
- Christingle gathering

- Winter Wonderland (Community outreach)
- CAP Children's Christmas Gifts
- Involvement in organising Creation Fest (Cornwall-wide Christian Summer Festival)

DEANERY INVOLVEMENT & SUPPORT

- Resourcing sung worship and AV development
- Administration assistance
- Vision process consultancy
- ChurchSuite database
- Professional Media & Communications engagement
- Chairing the local Christians Against Poverty initiative
- Liaising with the local BID
- Liaising with the St Austell Regeneration Partnership

The Diocese, and through it the Church Commissioners, have indicated their support through at least 2026 and TM is a key part of the Diocesan Plan.

Our Trinity Centre and Café

Trinity Centre realises our vision to have a multi-use building available for church and community.

A derelict pub opposite HT church was purchased and redeveloped through generous congregational donations, loans and some grants.

The exterior has been rebuilt to complement local townscape heritage schemes and the adjacent historic Market House; it is recognised by the town as a wonderful example of how to re-invigorate the area.

The interior embodies many features reflecting the local china clay heritage. Throughout St Austell there are murals, sculptures and other works of art and the Trinity Centre proudly wears both a 'Banksy' and our own locally designed and sourced tile mosaic capturing many of the local sights.

The interior is re-ordered and finished to a high standard. It is divided at ground floor level into a Café, and a Church Office Reception area, from which the main staircase leading upstairs. The ground and first floors have been designed to provide maximum accessibility (which required raising the pavement significantly).



A lift provides users with limited mobility access to the Café (lower ground floor), Reception (upper ground floor) and the first floor meeting rooms and offices. Air-source heat pumps complement gas boilers.

TRINITY CAFÉ

The 40-seater café has a fully equipped kitchen suitable for supplying itself and medium-sized catered events. It has its own staff areas and storage rooms and a rear utility yard. It has its own on-site bakery, providing freshly baked products on a daily basis.

The café opened in November 2023 and provides a different style of catering from local cafés and food outlets, at an affordable price in a place of comfort and welcome. It is run as a distinct entity and is overseen by a small Board. Its vision is to be a liminal, welcoming space for refreshment and encounter. Its performance has already exceeded expectation.

Profit from its operation will initially help to repay outstanding loans and thereafter support the ministry of the church within the deanery and beyond.



TRINITY OFFICES

Office areas provide for the church clergy and staff team. The first floor includes 3 multi-purpose rooms available for use by local business, community and church groups. These spaces are key to the debt and life skills counselling for St Austell and for our Deanery's Leadership Development Centre activities.

The top floor is the focus of our youth and children's groups; its proximity to the church makes Sunday activities less challenging than our previous hired premises.

We have moved from a vision, to a reality – overcoming significant challenges of pandemic, materials shortages, soaring costs and with considerable sacrifices made by a congregation whole-hearted in moving forward.

Our Activities

We run several activities, some centrally and some through groups.

Several are supported by our TM team so there may be some duplication here with the TM segment:

SEEKER

- Alpha (on a termly basis)

BIBLE STUDY

- Precept
- Post-Alpha Bible study group

WORSHIP-RELATED

- Youth band
- Worship Team (rehearsals and team development)
- Grain, for young adults
- Prayer Ministry Group
- Radiant Prayer & Worship Nights

COMMUNITY

- CAP
- English for non-native speakers
- Kids Matter
- Holiday Clubs
- Walking for Health
- Bell-ringing
- Anna Chaplaincy

- Marriage Preparation
- The Marriage Course
- Parenting Teenagers
- Inspire monthly gatherings for +65s

OUTREACH-RELATED

- ManMade
- Women's Breakfasts
- Soul Life, for teenagers
- School assemblies locally
- Sports Chaplaincy
- Carols in local pubs

FELLOWSHIP

- First Thing
- Woven, for girls
- Mums' Group
- Over-65's Soup & Roll Lunches
- Walking Group
- Reading Group

Once a year we go on a weekend away from Friday teatime to Sunday afternoon. Our most recent one was to Lee Abbey in February 2023, and we are booked to return there this February.

Once a year we aim to have a teaching week with a theologian-in-residence.



Our Parish Team

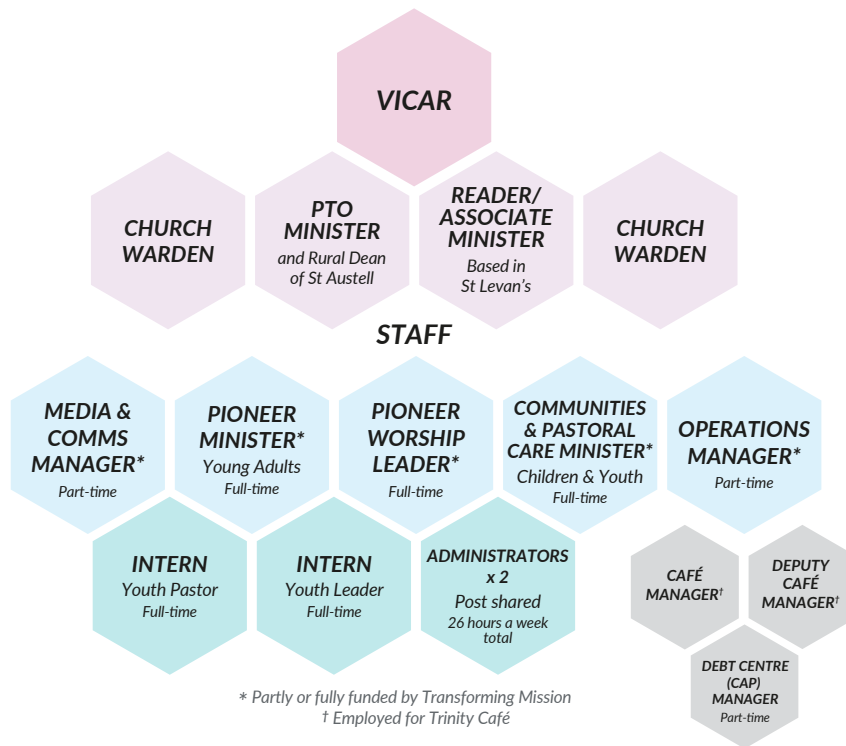
We aspire to a high level of collaboration, encouragement and mutual support and make ourselves accountable to one another in frequent 1-2-1 and small group interactions.

All staff have office space at the Trinity Centre (including a private office for the Vicar), thus enhancing efficiency in communication and collaboration.

The churchwardens are assisted by volunteers and by the PCC's Building Committee. The Treasurer is a volunteer and member of the PCC. A book-keeper is to be retained part time in the near future.

The team gathers in HT for morning prayer on Mondays and Thursdays. On Mondays it reviews the past week and looks at plans for the next two (or more) weeks. Twice a year we have sessions planning the year ahead on a rolling basis. ChurchSuite is used for event and planning management and as our database.

A volunteer, commissioned Sports Chaplain and a volunteer Anna Chaplaincy practitioner exercise their ministries as part of our broader team activities.



TEAM TRAINING

Team members have undergone training in:

- Safeguarding
- APEST
- Team dynamics and personal growth
- First Aid
- Active listening, boundaries
- Unconscious bias
- Grief and loss

The team provides mentoring leadership for the five APEST (see page 9) functions in our membership

GROWING AND MENTORING LEADERS

A key focus for all staff and embedded in our culture is the discerning, encouraging and nourishing of an emerging generation of leaders across all contexts and giftings.

Our PCC

CHURCH WARDENS

- Sara Moulton
- Bonnie Zaphiriou

TREASURER

- Richard Rashleigh

ASSISTANT PRIEST

- Rev'd Carol Edleston
(until 10/3/24)

DEANERY SYNOD REPS

- Heather Batho
- Jonny Dant
- Jamie Moore
- Mike Rowe

DIOCESAN SYNOD REPS

- Christopher Edleston
- Rev'd Carol Edleston (until 10/3/24)
- Rev'd Paul Zaphiriou (Rural Dean)

ELECTED MEMBERS

- Clive Nichols (to 2026)
- Georgia Jenkin (to 2026)
- Steve White (to 2024)
- Jane Wingrove (to 2026)

CO-OPTED MEMBERS

- Alan Gilbert
- Katrina Hurst (also PCC Secretary)



BAPTISMS, MARRIAGES & EUCHARIST

- We are happy to baptise infants and children.
- We are willing to remarry divorced persons according to the Bishops' guidelines, in communication with and support of our incumbent.
- We are willing to offer children communion if their communicant parents so desire.

KEY RESOLUTIONS OF THE PCC

1

SAFEGUARDING:

The PCC has adopted the Safeguarding policy of the Diocese of Truro.

2

THE LEADERSHIP ROLE OF WOMEN:

This PCC is fully affirming of the role of both women and men in all aspects and at all levels of ministry, including episcopacy.

3

BLESSINGS IN CHURCH OF SAME SEX UNIONS:

We do not intend to offer blessings to same sex couples. However, as Jesus turned no one away, regardless of background, creed or attitude, so we wish to affirm our welcome to people of all backgrounds, race, history and sexual orientation into our worshipping community, our relationships and our lives.

Your Home

The diocese is in advanced negotiations for the purchase of a detached house to serve as the new parsonage.

Accommodation over 3 floors, two gardens, garage plus hard-standing, 4 bedrooms; office on ground floor with adjacent WC, potential for lower floor to serve as self-contained accommodation. Overlooks St Austell town with a view to the church tower; 5-minute drive to church.



Your Home

Local Amenities

Strategic location, most of Cornwall accessible...

- Sports Centre St Austell (pool, gym etc.)
- Cornwall Hotel Spa & Pool
- Carlyon Beach Hotel – Golf, pool, spa
- SPORTS CLUBS & ACTIVITIES
 - Rugby
 - Football
 - Cricket
 - Croquet
 - Horse-riding
 - Athletics track (Par)
 - Tennis
 - Golf (x3)
 - Sailing
- WALKING
 - SW Coast Path is a world-renowned trail, Torpoint to Bude
 - The Clay Trails (also cycling)
 - Kingswood trail to Pentewan (also cycling)
 - Camel Trail (also cycling)
 - Cinema: multi-screen in St Austell
- THEATRE & MUSIC:
 - St Austell Arts Theatre
 - Keay Theatre
 - St Austell Choral Society
 - Hall for Cornwall, Truro
- FOOD & DRINK
 - There are renowned restaurants an easy drive away but also several attractive eateries nearer by
 - Knightor and Camel wineries are also in the wider vicinity
 - Local provender features in many shops
- MUSEUMS
 - St Austell (Civic)
 - Wheal Martyn (Clay Industry)
 - Truro (Cornwall Museum)
 - Charlestown (Shipwreck)
 - Mevagissey (Local Interest)
- OPEN-AIR ATTRACTIONS, GARDENS, ETC.
 - Charlestown
 - Lost Gardens of Heligan
 - Caerhays
 - Eden Project
 - Lanhydrock (NT)
 - Trerice (NT)
- SOUTH COAST BEACHES NEARBY
 - Charlestown
 - Crinnis
 - Par
 - Duporth
 - Hallane
 - Porthpean
 - Mevagissey
 - Caerhays
 - Polkerris
 - Fistral/Newquay for surfers (15 miles – north coast)



Local Education

Schools

St Austell boasts two secondary schools and numerous primary schools (please see links) as well as a 6th form College, Cornwall College St Austell.

Truro 6th form college and university is accessible by bus and train from St Austell.

Primary Schools

- www.mount-charlessch.org
- www.carclazesch.org
- www.sandyhill.org.uk
- www.bishopbronescombe.co.uk (CofE)
- www.charlestown.kernowlearning.co.uk
- www.st-mewan.cornwall.sch.uk

Private Schools

- www.truroschoo.com
- www.trurohigh.co.uk (Girls)

Secondary Schools

- www.penriceacademy.org
- www.poltairschool.co.uk

Universities

- University of Falmouth
- Truro College
- University of Exeter in Cornwall

6th Form Colleges

- www.cornwall.ac.uk/loctions/cornwall-college-st-austell
- www.truro-penwith.ac.uk/truro_college_campus



Our Communities

St Austell & Neighbourhood

St Austell is one of the largest urban areas in Cornwall. The parish encompasses about 60% of the town.

St Austell enjoys an advantageous location in the centre of the south coast of the county, on the main line from London to Penzance and less than a mile from the sea. Newquay Airport is 15 miles away.

Well before 1760 the Land's End to Plymouth road went through St Austell. The town started to grow in the 18th century. Its Polgooth mine became known as the greatest tin mine in the world. The discovery of china clay in great quantity just north of St Austell brought the town to prominence as it took over from tin and copper mining as the principal industry in the area.

The success and high profitability of the industry increased the population of the town considerably and led to St Austell becoming one of the most important commercial centres of Cornwall.

In 1963 a pedestrian precinct with shops, offices, and flats replaced much of the town's



historical core. This area is now outdated and tired. Regeneration attempts have had limited success. Covid accelerated store closures.

St Austell remains the main centre of the china clay industry in Cornwall and Imerys plc is the largest employer in the sector.

St Austell Brewery is another major employer; it supplies pubs in Cornwall and other parts of the country and has a visitor centre onsite.

The St Austell Masterplan can be consulted here: https://www.staustell-tc.gov.uk/_UserFiles/-Files/Revitalisation/Masterplan5.pdf



Our Communities

Porthpean & Neighbourhood

Porthpean means 'Little Cove' in Cornish.

The village comprises Higher and Lower Porthpean. While up to 20% of the properties may now be locked into the annual holiday let and Airbnb cycle, there is a strong sense of community amongst the permanent residents.

In former times Porthpean was a thriving fishing port, with fish cellars and a malthouse. Located between the maritime villages of Charlestown and Pentewan, the village is best known for its safe bathing beach, with a cafe and facilities; a perfect place for a bucket and spade holiday with rock pools, calm waters and warm shallows for swimming.

A dinghy Sailing Club with organised regattas operates from near the beach. Kayaking, canoeing, snorkelling or wild swimming are further appealing activities.

Higher Porthpean has an old village square complete with apple tree, Porthpean Golf Club with its beautiful sea views, and a croquet club. Porthpean's Outdoor Centre is widely used by Cornish schools. The SW Coast path runs through the village and so historic Charlestown is an easy walk away. Spectacular and unspoilt scenery abounds all around. Twenty minutes around the bay is the exquisite ancient port of Fowey.

Pentewan & Neighbourhood

The village dates to the Iron Age as a settlement was situated here on the circular hill known as The Round, around which the village is situated.

Pentewan is mentioned in the Domesday Book where it states: 'The Manor of Pentewan was held by Osulf'.

Fishing was the main occupation before the harbour was built; there are fish cellars on the east side of the village. Trading in china clay, coal, limestone and timber grew and so a harbour was built in 1744, redeveloped 1818-26. A 500 feet long pier was constructed from the dock basin out to sea. In 1829 a horse drawn tramway was opened up through Pentewan Valley to St. Austell to transport china clay, later converted to a narrow-gauge railway. Churches and chapels of the area would hire the railway for afternoon teas at Pentewan beach. The last load of clay was brought down the railway in 1918.

The caravan and camping ground opened in the 1950's, it is a very popular holiday destination with a long sandy beach which is good for bathing, diving, and surf-boarding. The site is full during the summer months and in half-terms and the Easter holidays, when the visitor population far outnumbers the locals. Pentewan is good base for touring.

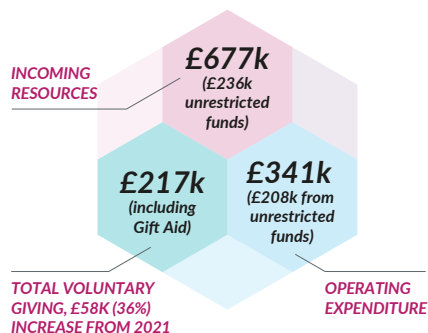
There is a well-regarded pub - The Ship Inn (it is not unknown to hear shanty groups singing here) - and a couple of cafés and seasonal shops. There are several excellent walks around the village and the SW coast path provides wonderful views of St Austell Bay. The village, which has a lovely original garden square, controls the old harbour, ensuring that it will remain unspoilt for generations to come.



Our Finances

Steady income base
Capacity for major projects
Fundraising track record

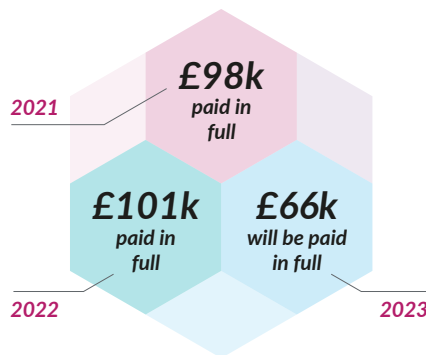
2022 Headlines (independently examined) to nearest £1k



OTHER CURRENT AND POTENTIAL INCOME SOURCES ARE MAINLY:

- Letting rooms in Trinity Centre
- Letting space in the churches (mainly HT)
- Trinity Café (starting Autumn/Winter 2023)
- Car parking

DIOCESAN MMF - MINISTRY AND MISSION FUND ('PARISH SHARE'):



TRANSFORMING MISSION FUNDING

Referenced on page 19, this 5-year missional initiative is mostly funded by external bodies though their contributions taper away. Five members of staff (a mix of part- and full-time) are predominantly funded through the Church Commissioners' Strategic Development Fund (SDF): £85k in 2022 with the balance of £29k contributed by the parish.

A further £20k was spent on provisioning expenses and equipment. £25k was received from the diocese as working capital support. The SDF contribution will reduce and parish contributions will increase year-by-year.

<https://trurodiocese.org.uk/re-sources/next-steps-on-the-way/tm/>

TRINITY CENTRE FIGURES

Highlighted on page 20 as to its mission and activities, the cost of conversion and refurbishment of the former Hop & Vine pub stands at £1,566k.

This has been funded by £575k from the parish family, £240k from grant bodies, £399k from disposals, with the balance drawn from a total of £438k available under 5-year loans.

OTHER PROPERTY

The parish is the beneficial owner of a large undeveloped plot in central St Austell just south of the railway station.

This includes the site of the Church Hall (now demolished). It provides temporary income from its current use as a car park.

There is significant potential for a residential/ mixed development with an appropriate partner.

Charity Number: 1135008.

Details can be viewed on the CC website at <https://register-of-charities.charitycommission.gov.uk/charity-search/-/charity-details/5005333>

Our Properties

Holy Trinity Church

Holy Trinity (HT) is the largest church in the parish and is located strategically in the historical town centre. It is listed Grade I.

Christian worship has been ongoing here since at least the 12th century as St Michael's Chapel, now part of the south aisle, dates to 1169. The Norman font is a relic of this earlier church. The main building dates to the 15th century and is a fine example of Norman Perpendicular.

Holy Trinity's tower is a landmark visible for many miles. It is 94 ft high, built 1478-1485. It carries stone carvings depicting the Holy Trinity, the risen Christ and the twelve apostles. Its belfry has a ring of 8 bells, the tenor weighing 18.5 cwt.

A series of sculptures on the south buttresses are described as 'An Epitome of the Creed' - a summary of doctrine in graphic form.

Inside interior, the wagon roof to the nave with its colourful carved bosses is original and is one of the building's finest features.

There is some excellent stained glass. The four south-facing windows depict The Last Supper, Jesus before Caiaphas, Jesus before Pilate, and the procession to Calvary. The second window from the west on the north side shows four Cornish saints:

Petroc, Austell, Martin and Piran. The chancel window displays the life of Jesus from birth to resurrection.

There is a fine organ with crisp action and bright, clear chorus work. It is played at traditional services and for civic occasions, weddings and funerals.

The double vestry on the north side was added in 1886. The outer vestry serves as our creche while the inner vestry is for staff use.

A well-equipped kitchenette and serving station in the north-west corner of the church is a key part of our welcome and hospitality.

Central heating (gas), contemporary lighting and modern audio-visual equipment all help ensure the building is welcoming and fit for purpose.

The building is generally in a very good condition.

The churchyard is maintained by Cornwall Council.

Holy Trinity Car Park

Holy Trinity Church Car Park comprises the footprint of our now-demolished Church Hall and its grounds.

Most of the car parking space is let out under short-term license agreements for individual spaces to 24 users, with some spaces reserved for the parish's use.



The property is accessed from the southern stretch of Trevarthian Road just before the railway footbridge. Trevarthian Road is intersected by the railway line and therefore there is a dead end just beyond the car park.

The plot's northern boundary abuts the curtilage of St Austell's bus and railway station.

There is a two-storey building in the North-East corner of the plot currently used for storage and originally a stables.

We are at the early stages of exploring the possibilities of a joint residential development with a housing association or similar partner.

Our Properties

St Levan's Porthpean Buildings and Grounds

St Levan's is a Grade II mission church built of Pentewan stone in 1884-85 by Sir Charles Graves-Sawle, Bt. of Penrice. It perches high above St Austell Bay with spectacular views to Gribbin Head and the Daymark.

This is the smallest of our three church buildings and the only one with a burial ground: the Graves-Sawle family plot lies behind the Eastern end and includes a memorial to the family's last male heir, Lieutenant Richard Graves-Sawle, Coldstream Guards, who was killed in battle at Ypres in 1914 aged 26 just three months after his marriage.

The church building itself and the old village schoolroom were left to the parish on the death in 1971 of Richard's surviving sister, Joan Rosemary Cobbold-Sawle who had no children. Some fine Victorian stained-glass windows and several wall plaques commemorate family members.

The schoolroom, which had become unusable and needed major repairs, was sold by the parish in 2021 on the understanding that the funds released would, in part, enable some upgrading to the church buildings and grounds including provision of a small kitchen area with running water, rebuilding the external toilet, improving disabled access to all areas and landscaping of the rear garden that lies

below the burial ground. This will allow the wider parish and the village community to use the building and grounds more fully for retreat days, youth activities, parish barbecues, village coffee mornings and meetings. The PCC has committed to carrying out these works as funds permit though as yet all the work carried out has been by parish volunteers.

Baptisms in the sea at Porthpean Beach at the bottom of the hill are a feature of parish life and we look forward to being able to invite everyone up the hill for a picnic lunch in our landscaped garden after such events.

Current minor plans include the installation of two TV screens for sharing videos and song lyrics. Our internal space is small but very flexible as there have never been fixed pews for worshippers but only chairs.

The church lies near the South-West Coast Path and is open in daylight hours to walkers and other visitors. We plan to become a Walkers' Church when our kitchenette is installed, offering free refreshment, but at present every drop of water we use must be carried from the wall tap in the separate toilet building. Our visitors' book shows that people value the beauty, peace and calm of our historic building. A card reader is installed for donations and offerings.

During lockdown when the building was closed, a tradition of using the gateposts as a sort of shop window witness sprang up, with flowers to mark village deaths, Remembrance wreaths and crosses for the fallen and a flower-covered Easter cross all facing out to the village. The Christmas tree had to be sheltered in the arcaded porch because it was decorated with lights. These new traditions have persisted even though lockdowns are now just a bad memory.

We are a popular wedding church and have strong links with Porthpean House, a wedding venue in the village, which is owned and run by a parishioner. Several couples who have married here travelled long distances to worship with us beforehand and return regularly to renew acquaintance, bringing their babies with them.

Our church building is the only community space in the village and we are in the process of adapting and improving it, and our grounds, for the benefit of both the Parish and the village.



Our Properties

All Saints' Church, Pentewan

The present Church building was erected in 1821 and was planned to be in middle of a terrace, but the southern end of the terrace was never built.

The adjacent houses incorporate tracery from the Elizabethan Polrudden House, which was destroyed by French pirates. After a few decades it closed as a place of worship and was used as a carpenter's workshop, but was restored and re-opened as a church in 1878. The octagonal oak pulpit on its round base came from Holy Trinity Church.

Due to a fall in the permanent population of the village and the need for extensive repairs, recently the possibility that the church would close reared its head again. However, due to the hard work and dedication of a few, the church had a new roof installed and was redecorated inside with plain plastered walls and ceiling, and the church remained open.

The fabric of the church requires additional attention in the north-west corner though works in that regard are already under way.

There is no AV system but the acoustics are good and there is a small organ.

All Saints will continue to be a place for visitors and local people alike to experience the peace and presence of God. Perched on the hillside overlooking the village it will continue to attract walkers from the South-West Coast path, to be inviting as a wedding venue and to be a place of regular witness and worship...

...and at night the Cross on the western facade of the church is lit to shine out over the village and the holiday camp.



Our Future Together

Now that you have read our profile, we hope you feel excited, inspired and impelled to explore further.

You will gather from this Parish Profile that we are a dedicated, energetic community that discerns and grows leaders.

We are looking for a leader who is in harmony with our vision and ready to build with us on existing foundations rather than one seeking to start from scratch.

The pandemic affected many ministries throughout Cornwall, including Transforming Mission, but we believe we are now emerging as the flagship hub for this initiative in this Diocese. Our new vicar will have a key role in driving TM forward.

Come and visit us; you are assured of a warm welcome and a Cornish 'cakey tea' with the jam and cream the right way round on the scones.



Top challenges as you enact our Vision and make Jesus known:



*Christ himself gave the **apostles**, the **prophets**, the **evangelists**, the **pastors** and **teachers**, to equip his people for works of service, so that the body of Christ may be built up until we all reach unity in the faith and in the knowledge of the Son of God and become mature, **attaining to the whole measure of the fullness of Christ.***

Ephesians 4:11-13



**SEARCHING FOR GOD'S HEART
AND SHARING WHAT WE FIND**



Call us: 01726 64299

Email us: admin@staustellparish.uk

Find us: www.staustellparish.uk

Parish Church Office
Trinity Centre
4 Market Street
St Austell
Cornwall PL25 4BB

Registered Charity No. 1135008