



E S E D R A

g r e s f i n e p o r c e l l a n a t o

★★★★★
NAXOS[®]
FINCIBEC GROUP



INDICE

index

02

CONCEPT

08

OLIMPIA

16

EFESO

22

PERGAMO

28

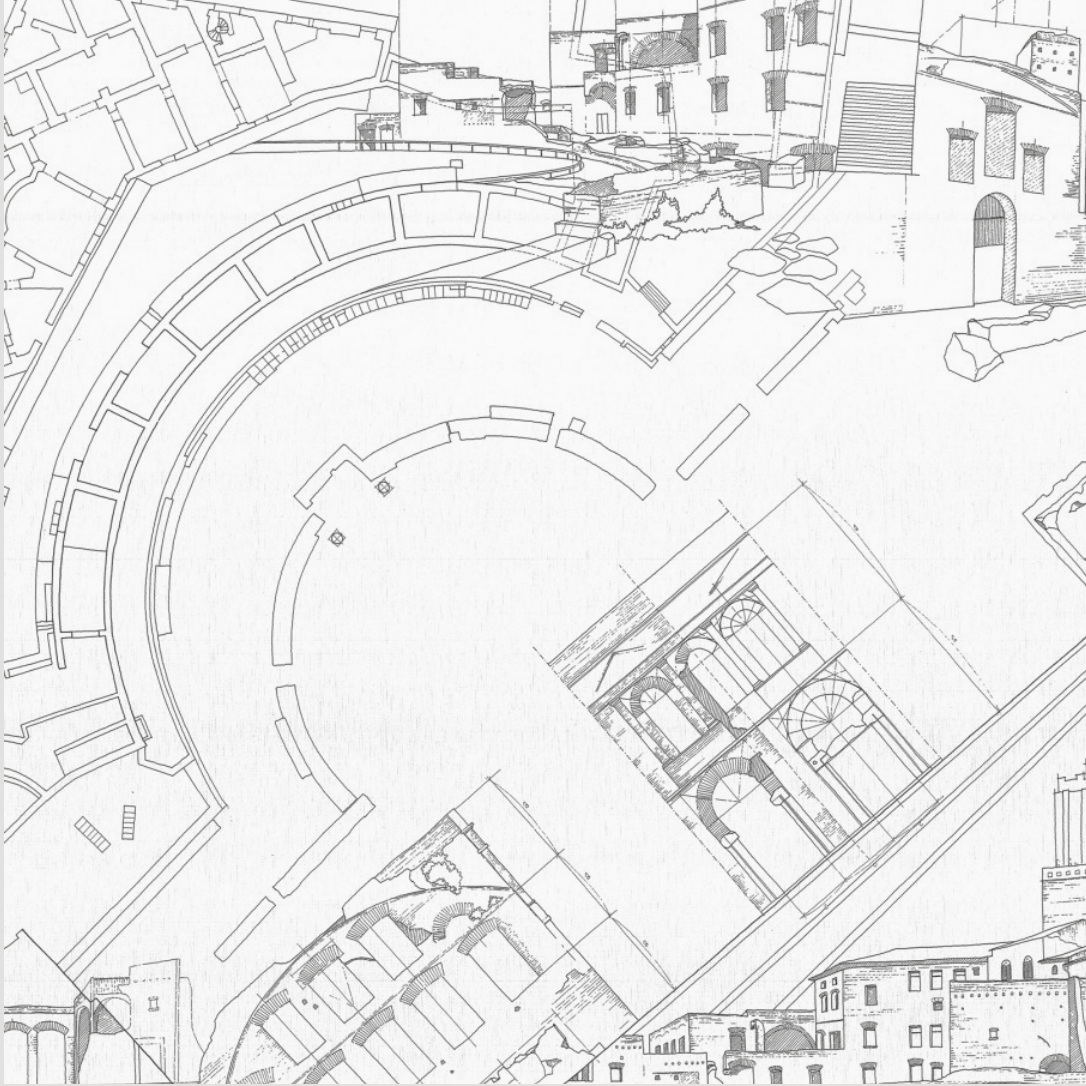
DELFI

34

ANDROS



E S E D R A



MATERIA CHE HA UNA STORIA DA RACCONTARE

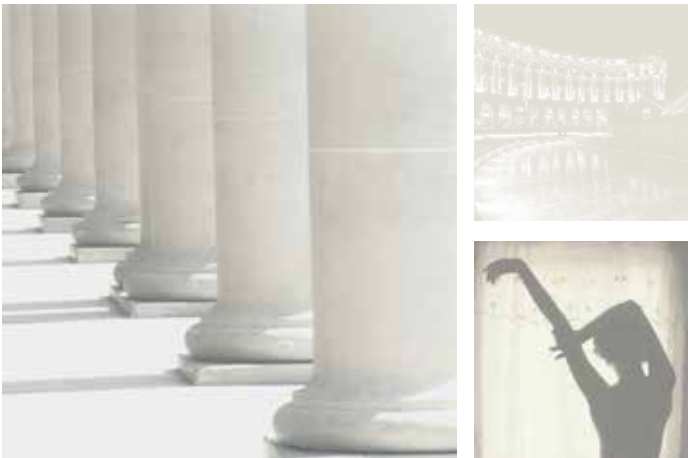
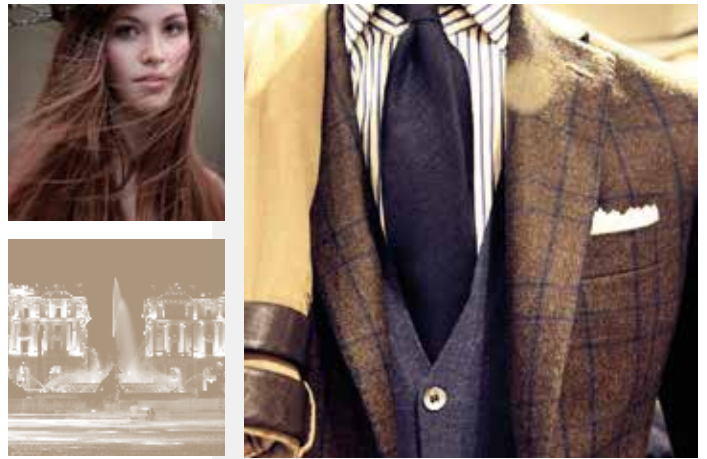
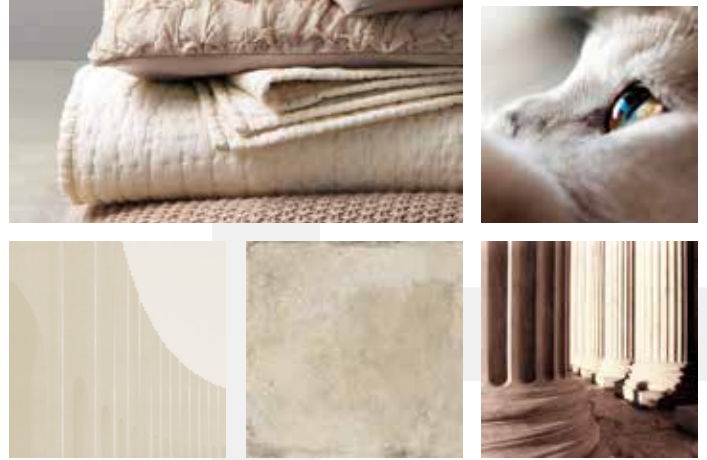
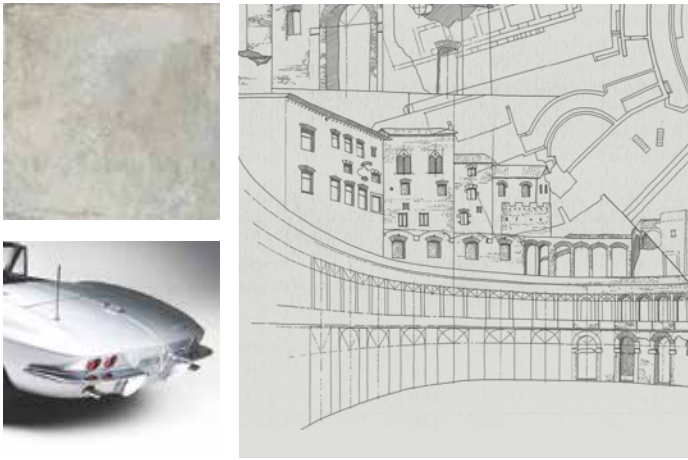
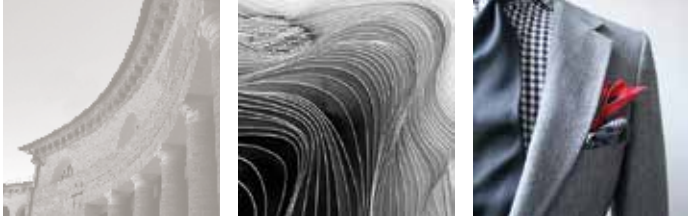
Material with a story to tell

Esedra è la materia d'incontro tra stili che superano il tempo. Il suo bordo è mosso da delicate sbrecciature pur mantenendo la regolarità geometrica della lastra. L'espressività della superficie si arricchisce di movimenti grafici decisi e garbati al tempo stesso, che interpretano in modo inedito le venature calcaree del travertino. Una materia dallo stile forte, pensata, con i suoi colori ispirati alla natura, per caratterizzare i luoghi del vivere contemporaneo.

Esedra is the material that juxtaposes styles transcending time. Its edges are textured with delicate discontinuities that nonetheless maintain the geometric regularity of the piece. The expressiveness of the surface is enriched with decisive yet subtle motifs that innovatively reinterpret the grain of travertine. A material with a vigorous style, conceived with naturally inspired colours to assert spaces for contemporary living.



E S E D R A



CLASSICO E CONTEMPORANEO

Classical yet contemporary

Esedra: una magia che rende il tempo percorribile in "entrambe le direzioni". Oggetti e concetti che segnano un'epoca ma hanno l'energia per tornare attuali in momenti successivi. La bellezza che riesce ad oltrepassare i limiti del tempo. Quella vera. Esedra è tutto questo: materia che recupera il sapore delle antiche lastre sbrecciate dalla mano dell'uomo, un fondamentale architettonico che ha dato vita e carattere a tante piazze medioevali che si rinnova in superfici di incredibile attualità.

Esedra: a magic that allows time to be lived and enjoyed in both directions. Objects and concepts that trace a bygone era yet have the energy to bound back into the present. A beauty that manages to bypass the limits of time itself. The real definition of beauty. Esedra is all this: a material which reclaims the hand-chipped authenticity of yore, of the fundamental architecture that gave life and character to many a medieval square, yet which reinvents itself with stunningly contemporary timeliness.



E S E D R A



SUPERFICIE NATURALE

natural surface

1 BORDO NATURALE

1 natural edge

5 COLORI

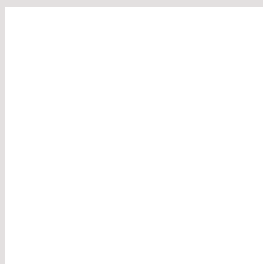
5 colours



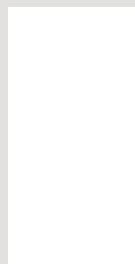
60x60 cm
24"x24"

5 FORMATI

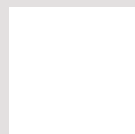
5 sizes



60x60 cm
24"x24"



30x60 cm
12"x24"



30x30 cm
12"x12"



7,3x30 cm
3"x12"



50x100 cm
20"x39"

SUPERFICIE GRIP

grip surface

1 BORDO NATURALE

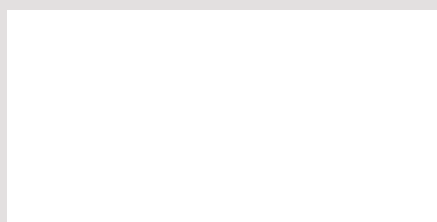
1 natural edge

1 FORMATO

1 size

3 COLORI

3 colours



50x100 cm
20"x39"

20 mm GRIP

2 BORDI NATURALE / RETT.

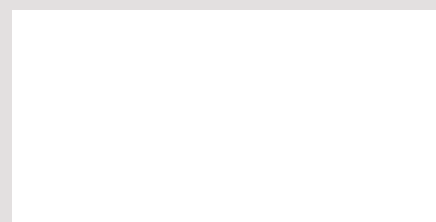
2 edges natural / rect

1 FORMATO

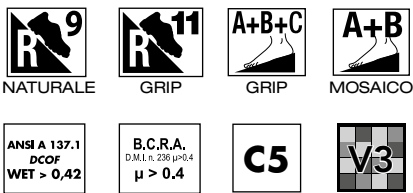
1 size

2 COLORI

2 colours



50x100 cm
20"x39"



OLIMPIA

gres fine porcellanato
fine porcelain stoneware







Ambiente realizzato con: Olimpia 60x60 nat. - 30x60 nat. - 30x30 nat. - 50x100 grip
Setting realized with: Olimpia 60x60 nat. - 30x60 nat. - 30x30 nat. - 50x100 grip







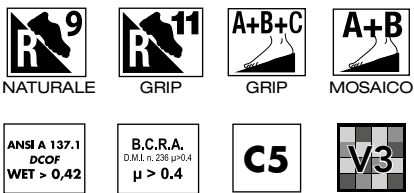
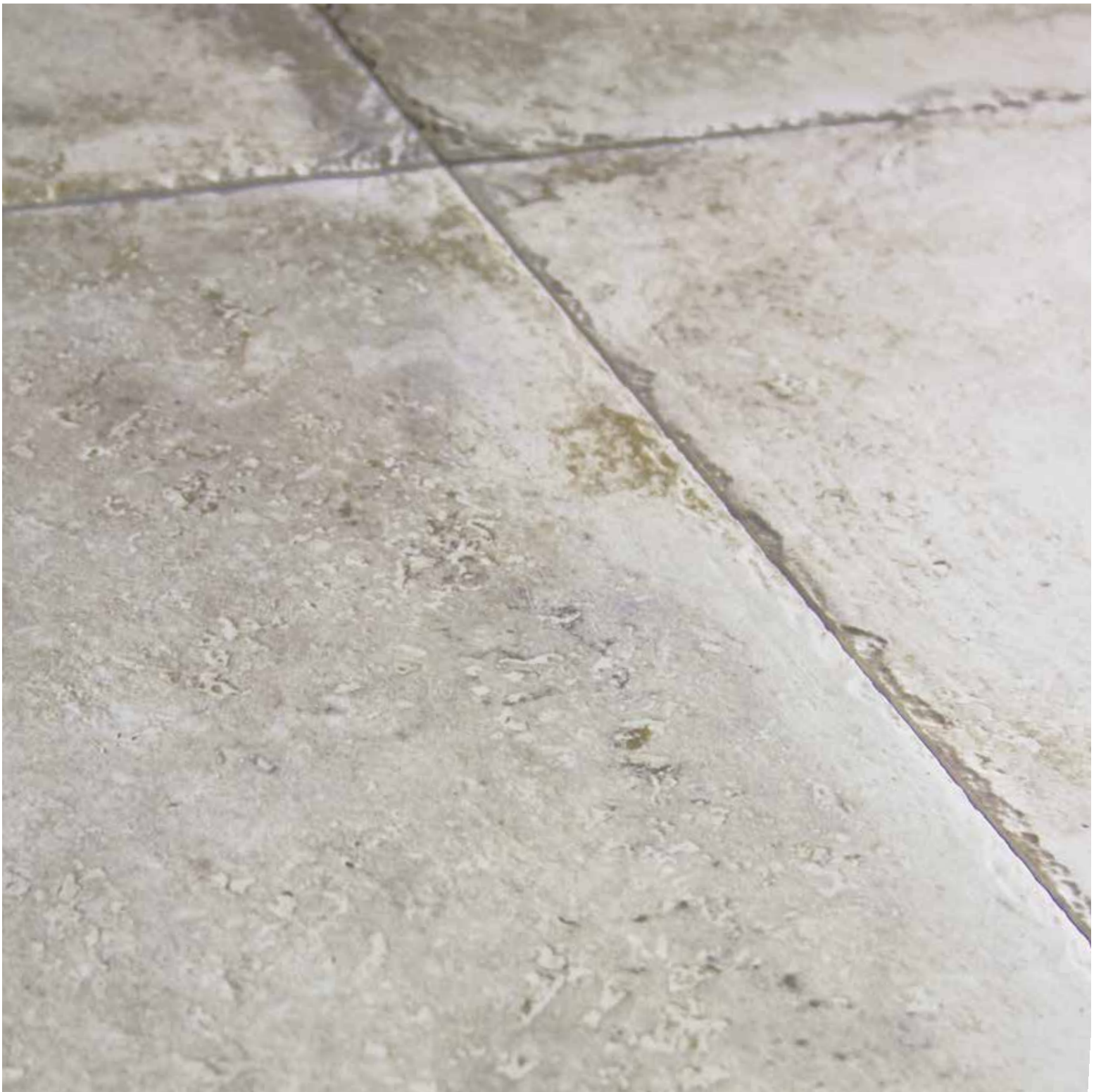


Ambiente realizzato con: Olimpia 50x100 grip
Setting realized with: Olimpia 50x100 grip



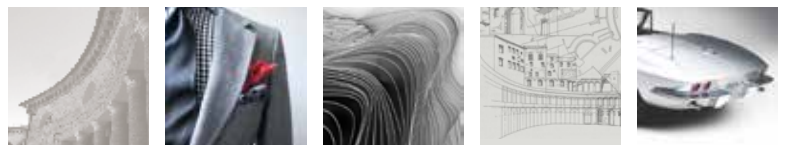
OLIMPIA
gres fine porcellanato
fine porcelain stoneware





EFESO

gres fine porcellanato
fine porcelain stoneware





NAXOS[®]
FINCIBEC GROUP







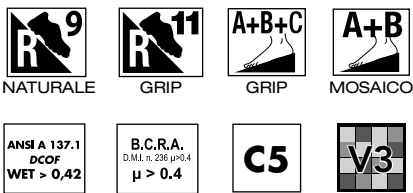
Ambiente realizzato con: Efeso 60x60 nat. - Mattoncino 7,3x30 nat.
Setting realized with: Efeso 60x60 nat. - Mattoncino 7,3x30 nat.

EFESO

gres fine porcellanato
fine porcelain stoneware



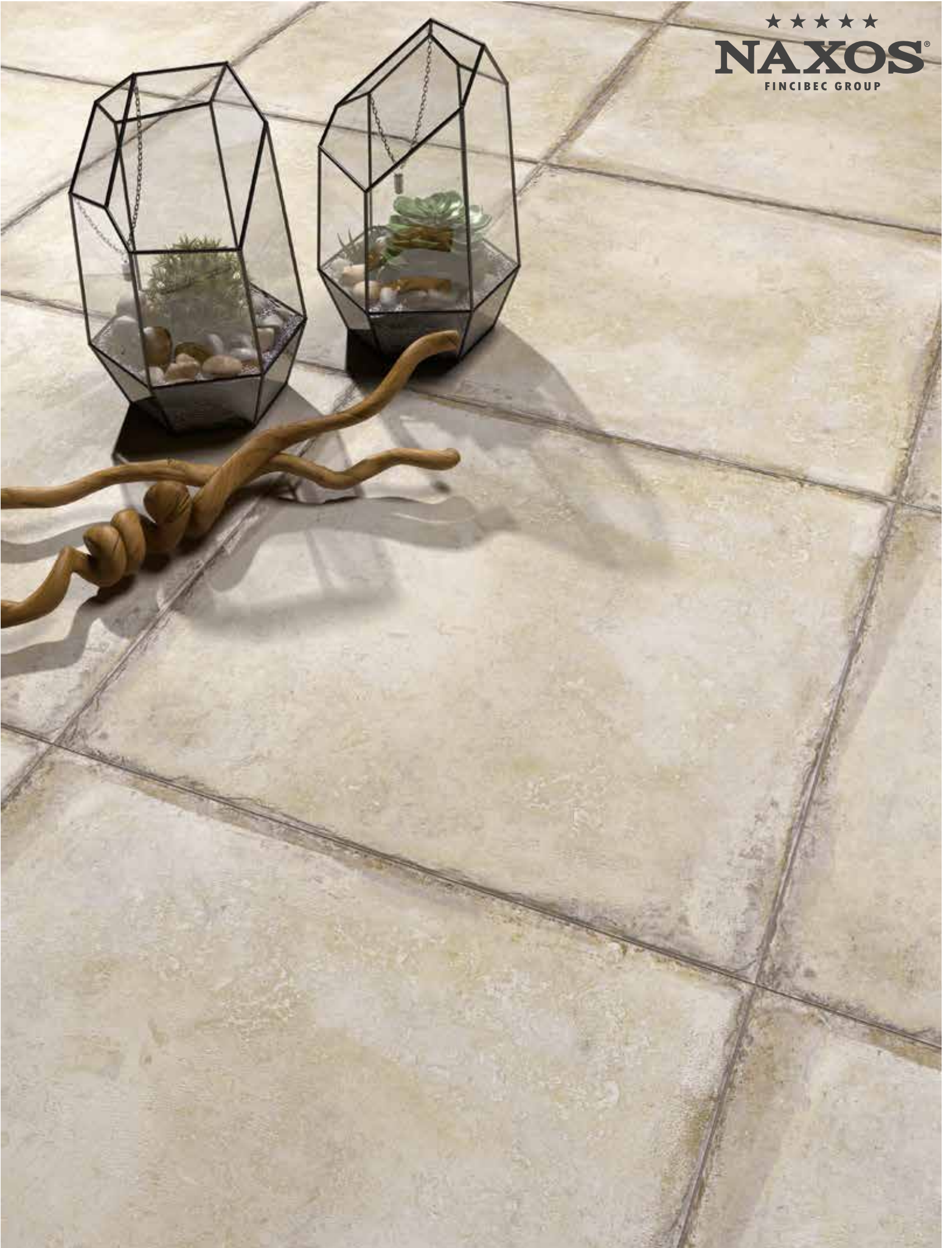




PERGAMO

gres fine porcellanato
fine porcelain stoneware







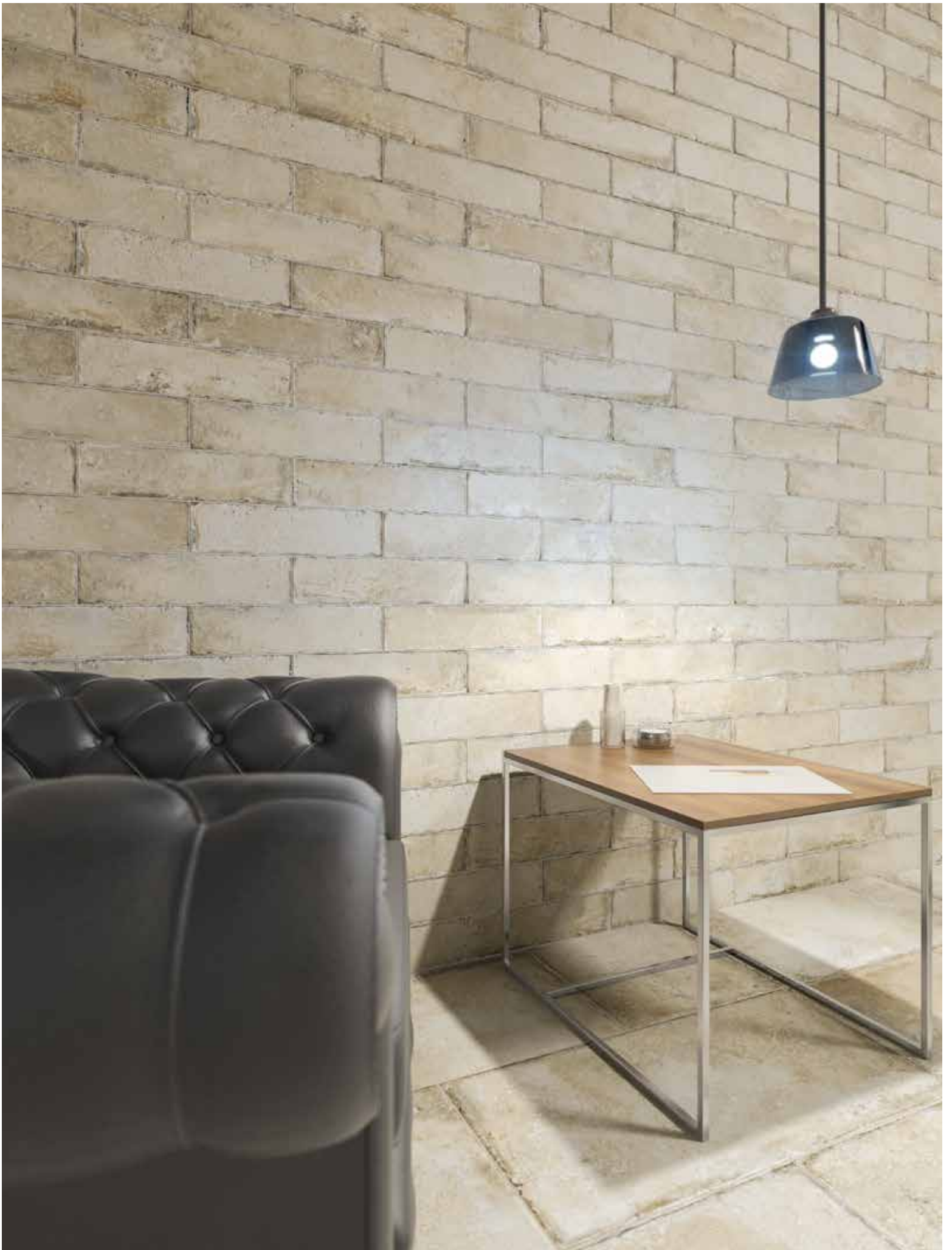
Ambiente realizzato con: Pergamo 60x60 nat. - 30x60 nat. - 30x30 nat. - Mattoncino 7,3x30 nat.
Setting realized with: Pergamo 60x60 nat. - 30x60 nat. - 30x30 nat. - Mattoncino 7,3x30 nat.

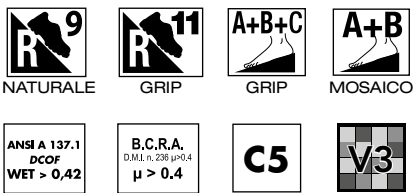




PERGAMO

gres fine porcellanato
fine porcelain stoneware



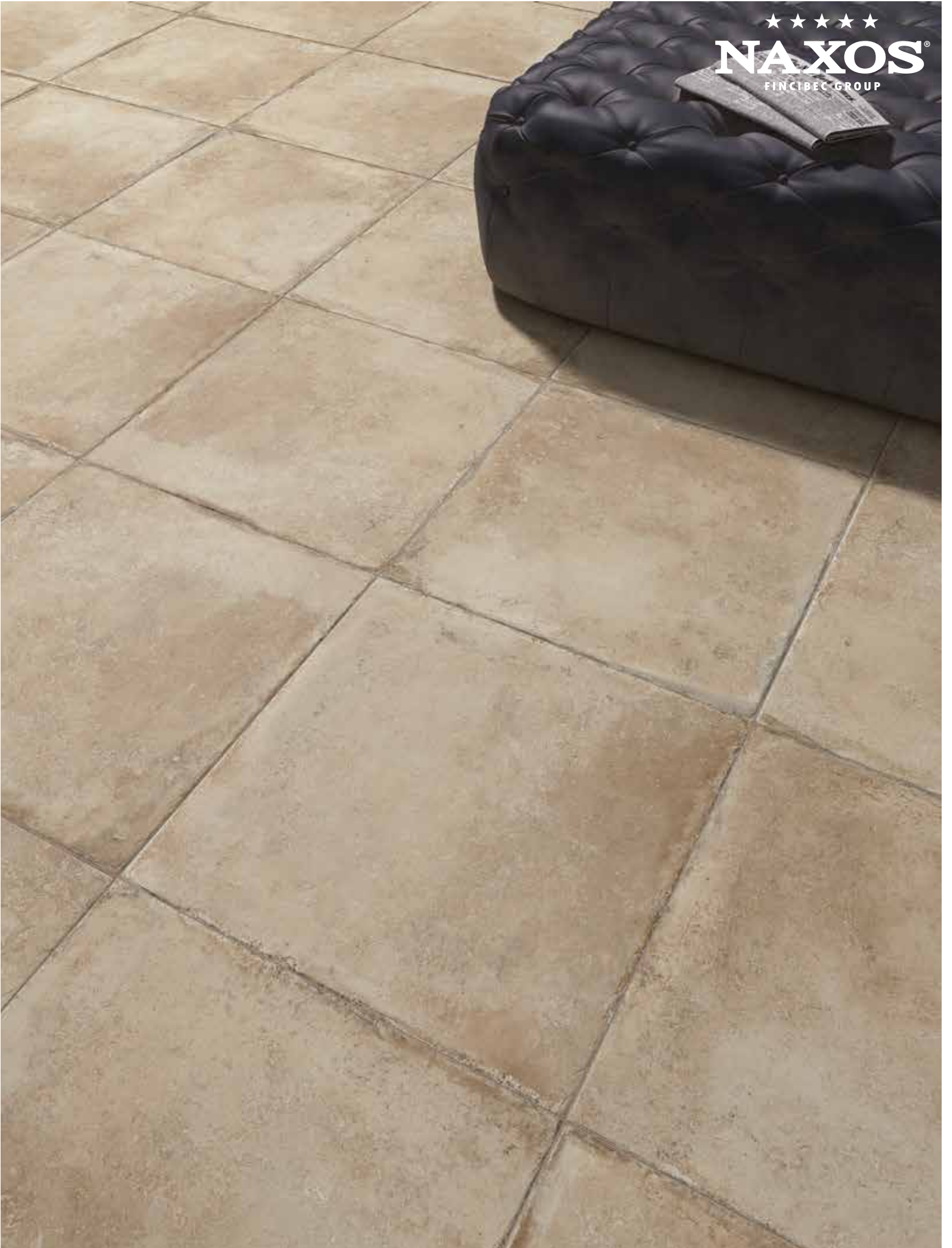


DELFI

gres fine porcellanato
fine porcelain stoneware



☆☆☆☆☆
NAXOS[®]
FINCIBEC GROUP









DELFI

gres fine porcellanato
fine porcelain stoneware



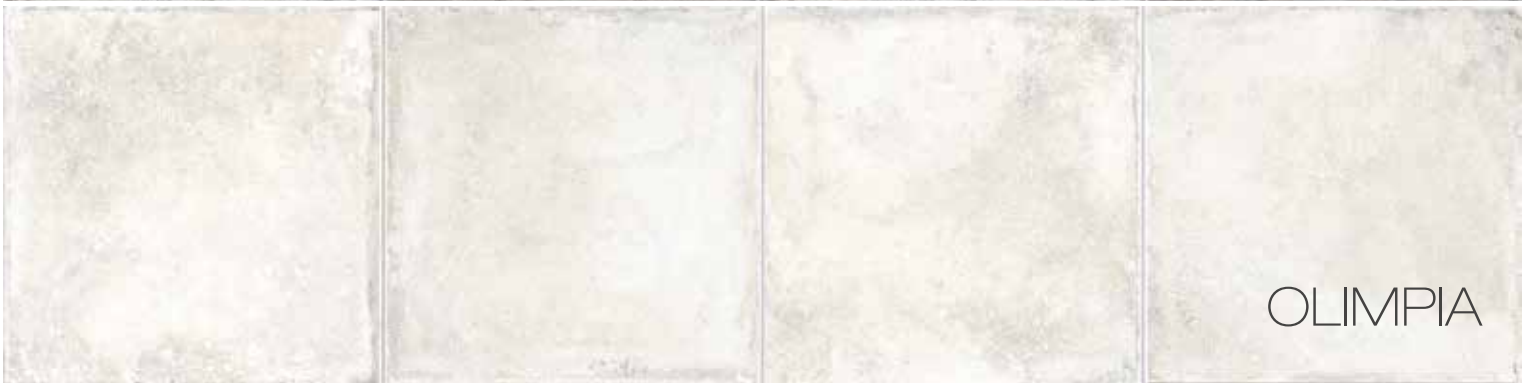


E S E D R A

gres fine porcellanato
fine porcelain stoneware



EFESO



OLIMPIA



PERGAMO



DELFI



ANDROS

Sizes - Formati



60x60 - 24"x24" Φ 9 mm

91512 Olimpia Nat.
91513 Pergamo Nat.
91514 Efeso Nat.
91515 Delfi Nat.
94786 Andros Nat.

■ 93



30x60 - 12"x24" Φ 9 mm

91508 Olimpia Nat.
91509 Pergamo Nat.
91510 Efeso Nat.
91511 Delfi Nat.

■ 81



30x30 - 12"x12" Φ 9 mm

93030 Olimpia Nat.
93032 Pergamo Nat.
93029 Efeso Nat.
93027 Delfi Nat.

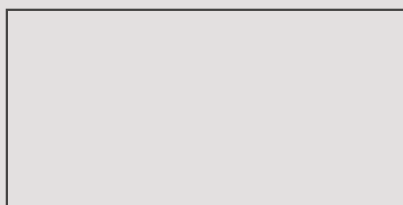
■ 75



7,3x30 - 3"x12" Φ 9 mm
Mattoncino

91804 Olimpia Nat.
91805 Pergamo Nat.
91806 Efeso Nat.
91807 Delfi Nat.

■ 166



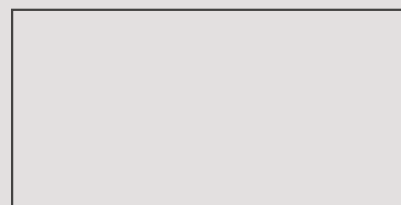
50x100 - 10"x39" Φ 9 mm

94666 Olimpia Nat. 91886 Olimpia Grip
94667 Pergamo Nat. 91887 Pergamo Grip
94665 Efeso Nat. 91888 Efeso Grip

■ 129

■ 129

20 mm



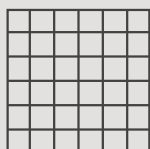
50x100 - 10"x39" Φ 20 mm

102001 Efeso Grip Rett. 102003 Efeso Grip
102000 Pergamo Grip Rett. 102002 Pergamo Grip

■ 165

■ 140

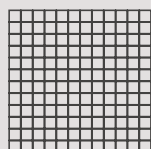
Mosaics - Mosaici



4,7x4,7 - 1,8"x1,8"
Mosaico su rete
burattato
30x30 - 12"x12"

91701 Olimpia Nat.
91702 Pergamo Nat.
91700 Efeso Nat.
91699 Delfi Nat.

■ 193



2,5x2,5 - 1"x1"
Mosaico su rete
burattato
30x30 - 12"x12"

95649 Olimpia Nat.
95650 Pergamo Nat.
95651 Efeso Nat.
95652 Delfi Nat.

■ 202

Special pieces - Pezzi speciali



7,2x60 - 3"x24" Φ 9 mm
Battiscopa

naturale

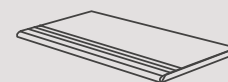
● 13



7,2x30 - 3"x12" Φ 9 mm
Battiscopa

naturale

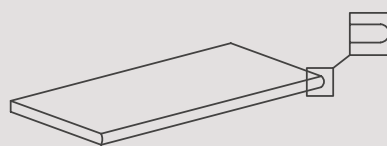
● 5



30x60 - 12"x24" Φ 9 mm
Gradino

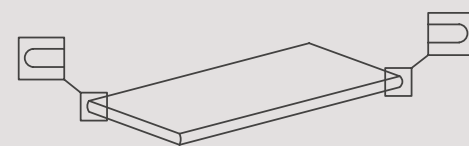
naturale

● 64



50x100 - 10"x39" Φ 20 mm
Gradone con Toro

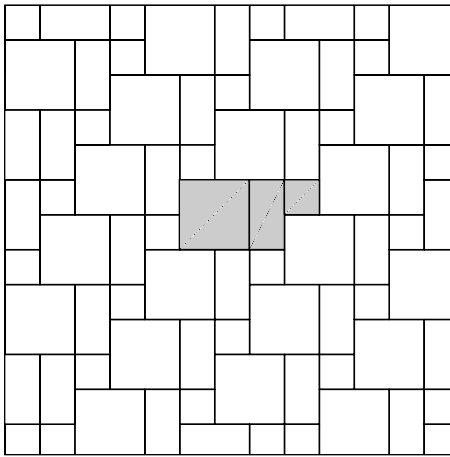
Grip ● 198
Grip Rett. ● 202






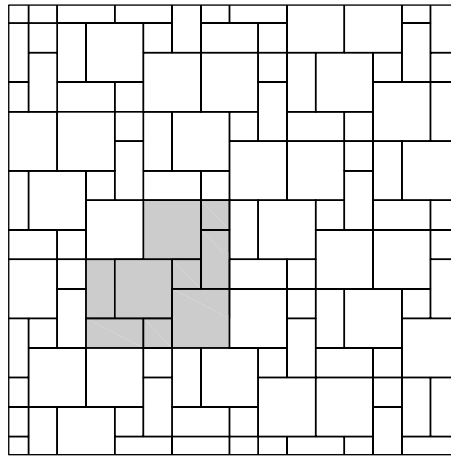
50x100 - 10"x39" Φ 20 mm
Gradone Angolare con Toro DX/SX

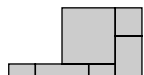
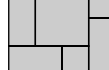
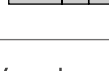
Grip ● 212
Grip Rett. ● 213

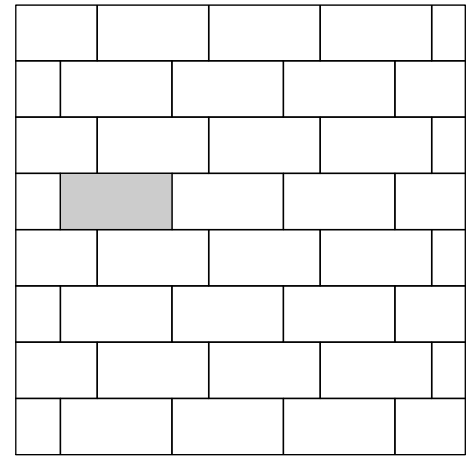
How to lay - Schemi di posa




	60x60	57,1%
	30x60	28,6%
	30x30	14,3%

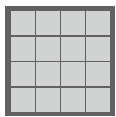


	60x60	57,1%
	30x60	28,6%
	30x30	14,3%

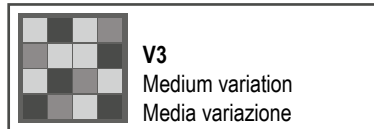


	50x100	100%
---	--------	------

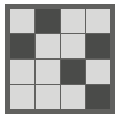
Colours variations - Variazioni cromatiche



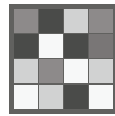
V1
Even appearance
Aspetto uniforme



V3
Medium variation
Media variazione



V2
Light variation
Lieve variazione



V4
Strong variation
Intensa variazione

It is necessary to take the tiles from several different boxes when laying them.

È indispensabile all'atto della posa, prelevare le piastrelle da più confezioni.

Use categories - Categorie d'impiego

C1

Floor tiles recommended for low traffic areas.
Piastrille da pavimento consigliate per calpestio lieve.

C4

Floor tiles recommended for medium traffic areas.
Piastrille da pavimento consigliate per calpestio medio.

C2

Floor tiles recommended for light traffic areas.
Piastrille da pavimento consigliate per calpestio leggero.


C5


Floor tiles recommended for heavy uses.
Piastrille da pavimento consigliate per calpestio intenso.

C3

Floor tiles recommended for medium-light traffic areas.
Piastrille da pavimento consigliate per calpestio medio-leggero.

Packaging - Imballi


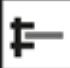















	60x60 cm 24"x24"	50x100 cm 10"x39"	50x100 cm 20 mm 10"x39"	30x60 cm 12"x24"	30x30 12"x12"	30x30 cm Mosaico 12"x12" Mosaic	7,3x30 cm Mattoncino 3"x12"
Pc.	3	2	1	6	13	11	46
M ²	1,08	1	0,5	1,08	1,17	1	1,007
Kg	23	21	22,5	22,50	24	20,3	20,5

	60x60 cm 24"x24"	50x100 cm 10"x39"	50x100 cm 20 mm 10"x39"	30x60 cm 12"x24"	30x30 12"x12"	30x30 cm Mosaico 12"x12" Mosaic	7,3x30 cm Mattoncino 3"x12"
Colli Boxes	40	35	42	48	36	50	60
M ²	43,2	35	21	51,84	36	58,5	60,42
Kg	920	735	945	1080	730,8	1200	1230

CARATTERISTICHE TECNICHE / GRES FINE PORCELLANATO

TECHNICAL SPECIFICATIONS / PORCELAIN STONEWARE - TECHNISCHE EIGENSCHAFTEN / FEINSTEINZEUG - CARACTÉRISTIQUES TECHNIQUES / GRÈS FIN CÉRAME CARACTERÍSTICAS TÉCNICAS / GRES FINO PORCELÁNICO - ТЕХНИЧЕСКИЕ ХАРАКТЕРИСТИКИ / МЕЛКОЗЕРНИСТЫЙ КЕРАМОГРАНИТ

STANDARDS : UNI EN 14411 ANNEX G - Bla / UNI EN ISO 13006 ANNEX G - Bla

CARATTERISTICHE TECNICHE TECHNICAL DATA TECHNISCHE DATEN CARACTÉRISTIQUES TECHNIQUES CARACTERÍSTICAS TÉCNICAS ТЕХНИЧЕСКИЕ ХАРАКТЕРИСТИКИ		TIPO DI PROVA STANDARD OF TEST NORME DU TEST TESTNORM TIPO DE PRUEBA TИП ТЕСТА	VALORI PRESCRITTI DALLE NORME INTERNATIONAL STANDARDS INTERNATIONALE NORMWERTE VALEURS PRÉVUES PAR LES NORMES VALORES PREVISTOS POR LAS NORMAS ПРЕДУСМОТРЕННЫЕ СТАНДАРТОМ			VALORE MEDIO NAXOS NAXOS AVERAGE VALUE NAXOS MITTELWERT VALEURS MOYEN NAXOS VALOR MEDIO NAXOS СРЕДНЕЕ ЗНАЧЕНИЕ NAXOS	
CARATTERISTICHE DIMENSIONALI - SIZE CHARACTERISTICS - MASSEIGENSCHAFTEN - DETERMINATION DES CARACTÉRISTIQUES DIMENSIONELLES CARACTERÍSTICAS DIMENSIONALES - РАЗМЕРНЫЕ ХАРАКТЕРИСТИКИ		REQUIREMENTS FOR NOMINAL SIZE N			NAT	GRIP	
		7 cm ≤ N < 15 cm		N ≥ 15 cm			
			mm	%	mm		
	LATI SIDES - SEITEN COTES - CANTOS РАЗМЕРЫ СТОРОН	FOR NON-RECTIFIED TILES	EN ISO 10545-2	±0,9	±0,6	±2,0	CONFORME COMPLYING - ERFÜLLT CONFORME - CONFORME COOBTBETCTBYET
		FOR RECTIFIED TILES		±0,4	±0,3	±1,0	
	SPESSORE THICKNESS - DICKE ÉPAISSEUR - ESPESOR ТОЛЩИНА		EN ISO 10545-2	±0,5	±5,0	±0,5	CONFORME COMPLYING - ERFÜLLT CONFORME - CONFORME COOBTBETCTBYET
	RETTILINEITÀ DEGLI SPIGOLI STRAIGHTNESS OF SIDES - GERADLINIGKEIT DER KANTEN RECTITUDE DES ARÊTES - RECTITUD DE LOS CANTOS - КООУТОЛЬНОСТЬ	FOR NON-RECTIFIED TILES	EN ISO 10545-2	±0,8	±0,5	±1,5	CONFORME COMPLYING - ERFÜLLT CONFORME - CONFORME COOBTBETCTBYET
		FOR RECTIFIED TILES		±0,4	±0,3	±0,8	
	ORTOGONALITÀ RECTANGULARITY - RECHTWINKLIGKEIT PERPENDICULARITÉ - ORTOGONALIDAD КРИБИЗНА СТОРОН	FOR NON-RECTIFIED TILES	EN ISO 10545-2	±0,8	±0,5	±2,0	CONFORME COMPLYING - ERFÜLLT CONFORME - CONFORME COOBTBETCTBYET
		FOR RECTIFIED TILES		±0,4	±0,3	±1,5	
	PLANARITÀ SURFACE FLATNESS - EBENFLÄCHIGKEIT PLANEITÉ DE SURFACE - PLANEIDAD КРИБИЗНА ЛИЦЕВОЙ ПОВЕРХНОСТИ	CENTRE CURVATURE	FOR NON-RECTIFIED TILES	±0,8	±0,5	±2,0	CONFORME COMPLYING - ERFÜLLT CONFORME - CONFORME COOBTBETCTBYET
			FOR RECTIFIED TILES	±0,6	±0,4	±1,8	
		EDGE CURVATURE	FOR NON-RECTIFIED TILES	±0,8	±0,5	±2,0	
			FOR RECTIFIED TILES	±0,6	±0,4	±1,8	
	WARPAGE	FOR NON-RECTIFIED TILES		±0,8	±0,5	±2,0	
	FOR RECTIFIED TILES		±0,6	±0,4	±1,8		
	ASSORBIMENTO D'ACQUA WATER ABSORPTION - WASSERAUFNAHME ABSORPTION D'EAU - ABSORCIÓN DE AGUA ВОДОПОГЛОЩЕНИЕ		EN ISO 10545-3	≤ 0,5%		≤ 0,1%	
	RESISTENZA ALLA FLESSIONE FLEXION RESISTANCE - BIEGEFESTIGKEIT RESISTANCE A LA FLEXION - RESISTENCIA A LA FLEXIÓN ПРЕДЕЛ ПРОЧНОСТИ ПРИ ИЗГИБЕ		EN ISO 10545-4	S ≥ 700 N \bar{f} < 7,5 mm		CONFORME COMPLYING - ERFÜLLT CONFORME - CONFORME COOBTBETCTBYET	
				S ≥ 1.300 N \bar{f} ≥ 7,5 mm			
				R ≥ 35 N/mm			
	RESISTENZA ALL'URTO IMPACT RESISTANCE - STOSSEFESTIGKEIT RESISTANCE AUX CHOCES - RESISTENCIA A LOS GOLPES УДАРНОСТОЙКОСТЬ		EN ISO 10545-5	VALORE DICHIARATO DECLARED VALUE - ANGEBENER WERT VALEUR DÉCLARÉE - VALOR DECLARADO - ЗАЯВЛЕННОЕ ЗНАЧЕНИЕ		> 0,80	
	COEFFICIENTE DI DILATAZIONE TERMICA LINEARE COEFFICIENT OF LINEAR THERMAL EXPANSION - LINEARER WÄRMEAUDEHNUNGSKOEFFIZIENT COEFFICIENT DE DILATATION THERMIQUE LINEAIRE - COEFFICIENTE DE DILATACIÓN TÉRMICA LINEAL КОЭФИЦИЕНТ ЛИНЕЙНОГО ТЕРМИЧЕСКОГО РАСТЯЖЕНИЯ		EN ISO 10545-8	VALORE DICHIARATO DECLARED VALUE - ANGEBENER WERT VALEUR DÉCLARÉE - VALOR DECLARADO - ЗАЯВЛЕННОЕ ЗНАЧЕНИЕ		$\alpha = 6,7 \times 10^{-6} / ^\circ\text{C}$	
	RESISTENZA AGLI SBALZI TERMICI RESISTANCE TO THERMAL SHOCKS - BESTÄNDIGKEIT GEGEN TEMPERATURSCHWANKUNGEN RESISTENCIA A LOS CHOCOS TÉRMICOS - RESISTENCIA A LOS CHOQUES TÉRMICOS СТОЙКОСТЬ К ПЕРЕМЕНАМ ТЕМПЕРАТУРЫ		EN ISO 10545-9	TEST SUPERATO SECONDO EN ISO 10545-1 TEST PASSED ACCORDING TO - TEST BESTANDEN NACH TEXTE DÉPASSÉ SELON - PRUEBA SUPERADA SEGÚN ИСПЫТАНИЕ ПРОЙДЕНО В СООТВЕТСТВИИ С		NESSUN DANNO NO DAMAGE - KEIN SCHADEN AUCUN DOMMAGE - NINGUN DANO БЕЗ ПОВРЕЖДЕНИЙ	
	DILATAZIONE ALL'UMIDITÀ (IN MMM) MOISTURE EXPANSION (IN MMM) - FEUCHTIGKEITSBEDINGTE AUSDEHNUNG (IN MMM) DILATATION À L'HUMIDITÉ (EN MMM) - DILATACIÓN CON LA HUMEDAD (EN MMM) ВЛАЖНОСТНОЕ РАСТЯЖЕНИЕ (В MMM)		EN ISO 10545-10	VALORE DICHIARATO DECLARED VALUE - ANGEBENER WERT VALEUR DÉCLARÉE - VALOR DECLARADO - ЗАЯВЛЕННОЕ ЗНАЧЕНИЕ		MAX 0,1 mm / m	
	RESISTENZA AL GELO FROST RESISTANCE - FROSTBESTÄNDIGKEIT RESISTANCE AU GEL - RESISTENCIA AL HIELO МОРОЗОСТОЙКОСТЬ		EN ISO 10545-12	TEST SUPERATO SECONDO EN ISO 10545-1 TEST PASSED ACCORDING TO - TEST BESTANDEN NACH TEXTE DÉPASSÉ SELON - PRUEBA SUPERADA SEGÚN ИСПЫТАНИЕ ПРОЙДЕНО В СООТВЕТСТВИИ С		NESSUN DANNO NO DAMAGE - KEIN SCHADEN AUCUN DOMMAGE - NINGUN DANO БЕЗ ПОВРЕЖДЕНИЙ	
	RESISTENZA AI PRODOTTI CHIMICI USO DOMESTICO E ADDITIVI PER PISCINA RESISTANCE TO HOUSEHOLD AND SWIMMING POOL CHEMICAL PRODUCTS - BESTÄNDIGKEIT GEGEN HAUSHALTSCHENIKALIEN UND ZUSATZSTOFFE FÜR SWIMMINGPOOLS - RESISTANCE AUX PRODUITS CHIMIQUES USAGE DOMESTIQUE ET ADDITIFS POUR PISCINE - RESISTENCIA A LOS PRODUCTOS QUÍMICOS DE USO DOMÉSTICO Y ADITIVOS PARA PISCINA - СТОЙКОСТЬ К ДЕЙСТВИЮ БЫТОВЫХ ХИМИЧЕСКИХ СРЕДСТВ, ДОБАВКИ В БАССЕЙНЫ		EN ISO 10545-13	B MIN		CONFORME COMPLYING - ERFÜLLT CONFORME - CONFORME COOBTBETCTBYET	
	RESISTENZA A BASSE CONCENTRAZIONI DI ACIDI E ALCALI RESISTANCE TO LOW CONCENTRATIONS OF ACIDS AND ALKALI - BESTÄNDIGKEIT BEI NIEDRIGEN KONZENTRATIONEN VON SÄUREN UND LAUGEN - RESISTANCE À BASSES CONCENTRATIONS D'ACIDES ET ALCALIS - RESISTENCIA A BAJAS CONCENTRACIONES DE ÁCIDOS Y ALCALIS - СТОЙКОСТЬ К ДЕЙСТВИЮ НИЗКИХ КОНЦЕНТРАЦИЙ КИСЛОТ И ЩЕЛОЧЕЙ		EN ISO 10545-13	VALORE DICHIARATO DECLARED VALUE - ANGEBENER WERT VALEUR DÉCLARÉE - VALOR DECLARADO - ЗАЯВЛЕННОЕ ЗНАЧЕНИЕ		CONFORME COMPLYING - ERFÜLLT CONFORME - CONFORME COOBTBETCTBYET	
		RESISTENZA AD ALTE CONCENTRAZIONI DI ACIDI E ALCALI RESISTANCE TO HIGH CONCENTRATIONS OF ACIDS AND ALKALI - BESTÄNDIGKEIT BEI HOHEN KONZENTRATIONEN VON SÄUREN UND LAUGEN - RESISTANCE À HAUTES CONCENTRATIONS D'ACIDES ET ALCALIS - RESISTENCIA A ALTAS CONCENTRACIONES DE ÁCIDOS Y ALCALIS - СТОЙКОСТЬ К ДЕЙСТВИЮ ВЫСОКИХ КОНЦЕНТРАЦИЙ КИСЛОТ И ЩЕЛОЧЕЙ		EN ISO 10545-13	VALORE DICHIARATO DECLARED VALUE - ANGEBENER WERT VALEUR DÉCLARÉE - VALOR DECLARADO - ЗАЯВЛЕННОЕ ЗНАЧЕНИЕ		CONFORME COMPLYING - ERFÜLLT CONFORME - CONFORME COOBTBETCTBYET
	RESISTENZA ALLE MACCHIE RESISTANCE TO STAINS - FLECKENBESTÄNDIGKEIT RESISTANCE AUX TACHES - RESISTENCIA A LAS MANCHAS УСТОЙЧИВОСТЬ К ПЯТНООБРАЗОВАНИЮ		EN ISO 10545-14	CLASSE 3 MIN		CONFORME COMPLYING - ERFÜLLT CONFORME - CONFORME COOBTBETCTBYET	
	CESSIONE DI PIOMBO E CADMIO LEAD AND CADMIUM DISCHARGE - ABGABE VON BLEI UND CADMIUM PERTE DE PLOMB ET CADMIUM - CESIÓN DE PLOMO Y CADMIO ВЫДЕЛЕНИЕ СВИНЦА И КАДМИЯ		EN ISO 10545-15	VALORE DICHIARATO DECLARED VALUE - ANGEBENER WERT VALEUR DÉCLARÉE - VALOR DECLARADO - ЗАЯВЛЕННОЕ ЗНАЧЕНИЕ		< AL LIMITE DI RILEVAMENTO < THAN INSTRUMENT LIMIT < UNMESSBARES WERT < LIMITE DE L'INSTRUMENT < LIMITE DEL INSTRUMENTO < НА ПРЕДЕЛЕ ОПРЕДЕЛИМОСТИ	
	SCIVOLOSITÀ SKID RESISTANCE - RUTSCHWERT GLISSANCE - ADHERENCIA СКОЛЬЗКОСТЬ	DM 236/89 BCRA		> 0,40		> 0,40	
		ANSI A 137.1		WET DOOF > 0,42		> 0,42	
		DIN 51130		-		R9	R11
		DIN 51097		-		A+B MOSAICO	A+B+C

PER I CERTIFICATI SPECIFICI E VALORI PUNTIUALI, CONTATTARE FINCIBEC SPA - FOR SPECIFIC CERTIFICATES AND DATA, CONTACT FINCIBEC SPA - FÜR SPEZIELLE ZERTIFIKATE UND PUNKTWERTE, FINCIBEC SPA. KONTAKTIEREN - POUR LES CERTIFICATS SPÉCIFIQUES ET LES VALEURS PONCTUELLES, CONTACTER FINCIBEC SPA - PARA LOS CERTIFICADOS ESPECÍFICOS Y LOS VALORES CONCRETOS, CONTACTE CON FINCIBEC S.P.A. - ВОПРОСАМ СПЕЦИАЛЬНЫХ СЕРТИФИКАТОВ И ПОКАЗАТЕЛЕЙ СВЯЗИТЕС С FINCIBEC SPA.

Escluso pezzi speciali ed elementi decorativi With the exception of special pieces and decors

Note Notes

I prodotti possono essere modificati da Fincibec senza preavviso, respingendo ogni responsabilità su possibili danni diretti o indiretti causati da potenziali modifiche. Fincibec reserves the right to modify its products without prior notice and cannot be held liable for direct or indirect damage caused by such modifications.

Verificare sempre la correttezza delle informazioni e dei dati relativi a codici, imballaggi e pesi, consultando il listino prezzi in vigore. Always refer to the price list in force to ensure correct information and data on codes, packaging, and weight.

Le tonalità dei colori riportate nel catalogo sono indicative. The colours shades, reported on the catalogue, are indicative.



NAXOS

Strada Statale 569, 169
41014 - Solignano (Mo) Italy

Tel. +39 059 748811
Fax +39 059 797376

info@naxos-ceramica.it
www.naxos-ceramica.it

FINCIBEC S.p.A.

Sede legale: Via Valle d'Aosta, 47
41049 Sassuolo (Mo) Italy
Gruppo Fire S.R.L.

FINCIBEC USA INC.

420 Columbus Avenue
Valhalla N.Y. 10595 USA
info@fincibecusa.com

