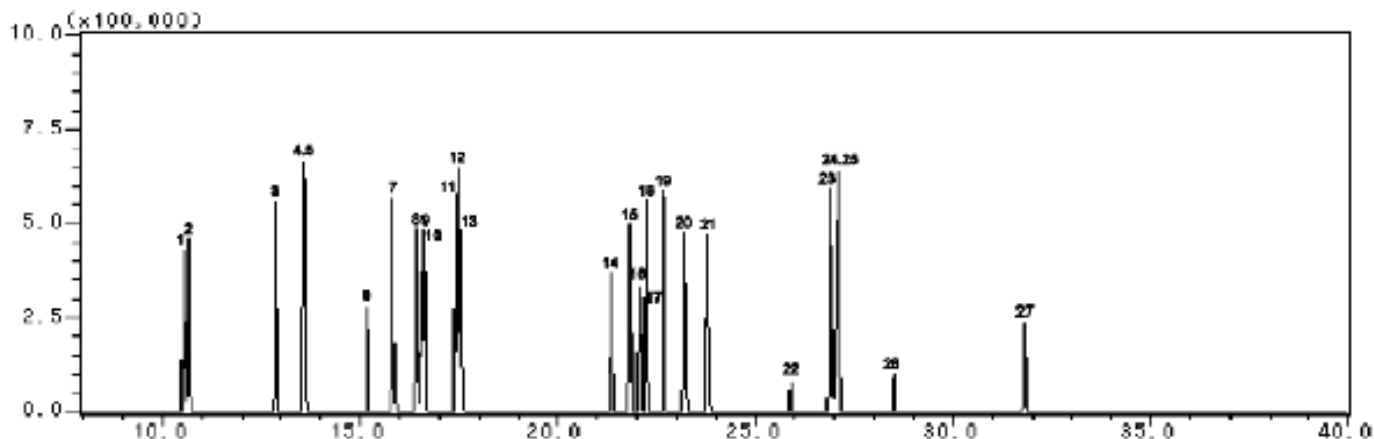


InertSearch™ for GC

InertCap® Applications

Phenols

Data No. GA019-0000



System : GC/MS
Column : InertCap 5MS/Sil
0.25mm I.D. x 30m df=0.25µm
Column Temp. : 40°C (3min) → 5°C/min → 200°C → 20°C/min → 280°C (3min)
Detection : MS
Sample : Phenols each 5mg/L

Solutes :

1. Phenol
2. 2-Chlorophenol
3. 2-Methylphenol
4. 4-Methylphenol
5. 3-Methylphenol
6. 2-Nitrophenol
7. 2,4-Dimethylphenol
8. 2,4-Dichlorophenol
9. 2,5-Dichlorophenol
10. 2,3-Dichlorophenol
11. 2,6-Dichlorophenol
12. 3-Chlorophenol
13. 4-Chlorophenol
14. 2,3,5-Trichlorophenol
15. 2,4,6-Trichlorophenol
16. 2,4,5-Trichlorophenol
17. 3,4,5-Trichlorophenol
18. 2,3,4-Trichlorophenol
19. 2,3,6-Trichlorophenol
20. 3,5-Dichlorophenol
21. 3,4-Dichlorophenol
22. 2,4-Dinitrophenol
23. 2,3,5,6-Tetrachlorophenol
24. 2,3,4,5-Tetrachlorophenol
25. 2,3,4,6-Tetrachlorophenol
26. 2-Methyl-4,6-dinitrophenol
27. Pentachlorophenol