

MPower: Local

ENGLAND TOOLKIT

**A self-led guide on how to become a
local councillor in England.**

TABLE OF CONTENTS

**MIGRANT DEMOCRACY PROJECT:
WHO WE ARE AND WHAT WE DO**

01

**THE STATE OF MIGRANT
REPRESENTATION**

02

**ELIGIBILITY TO STAND AS A
COUNCILLOR IN ENGLAND**

03

**COUNCILS: STRUCTURE AND
FUNCTION**

06

A COUNCILLOR'S ROLE

07

**COUNCILLORS AND MIGRANT
JUSTICE**

08

THE JOURNEY TO GETTING ELECTED

09

FREQUENTLY ASKED QUESTIONS

16

**NEED HELP STARTING YOUR
JOURNEY?**

17

RESOURCE LIST

18





WHO WE ARE AND WHAT WE DO

MIGRANT DEMOCRACY PROJECT IS A POLITICAL HOME FOR MIGRANTS IN THE UK WHO WANT TO SHAPE A **COLLECTIVE FUTURE ROOTED IN SOCIAL JUSTICE**, REFLECTING OUR NEEDS AND INTERESTS, THROUGH **COMMUNITY POWER BUILDING**.

WE BELIEVE EVERY RESIDENT, NO MATTER WHERE THEY ARE FROM, SHOULD HAVE **EQUAL ACCESS TO DEMOCRACY**.

WE ARE LED BY THE PRINCIPLES OF **ABOLITIONISM, UNIVERSALISM, HARM REDUCTION, AND SOLIDARITY** IN ALL OUR WORK. OUR STRUGGLE IS NOT ONLY TO GET RID OF OPPRESSIVE SYSTEMS - OUR FIGHT IS TO BUILD JUST ONES INSTEAD! OUR LIVED-EXPERIENCE GUIDES OUR WORK IN BUILDING MIGRANT POWER IN THE UK.

HOW ARE WE DOING THIS?

BY PROVIDING **POLITICAL EDUCATION** TO OUR MIGRANT COMMUNITIES, AND GETTING ELIGIBLE MIGRANTS, **REGISTERED TO VOTE!**

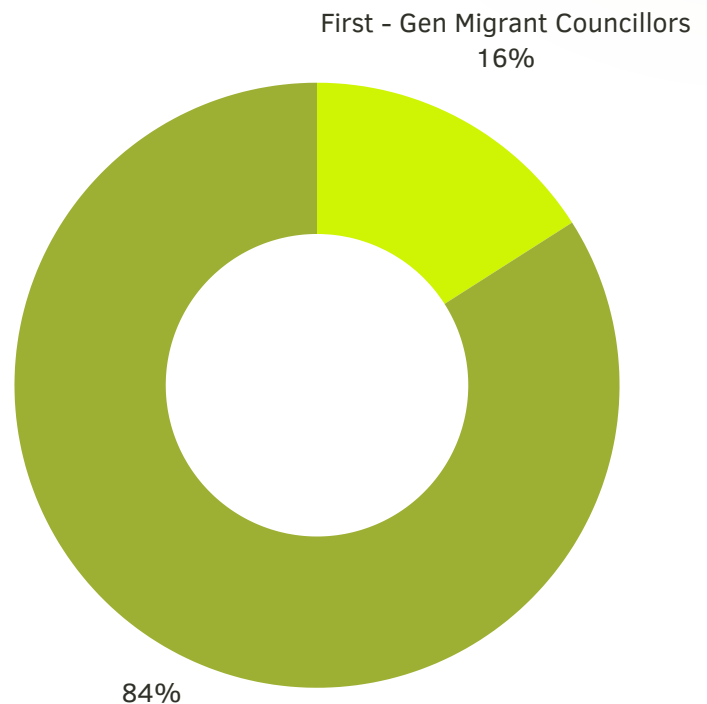
THROUGH '**OUR HOME OUR VOTE**' CAMPAIGNING FOR **VOTES FOR ALL!**

BY GETTING **OUR MIGRANT LEADERS TRAINED AND ELECTED AS POWERFUL COMMUNITY LEADERS** WHO ADVOCATE FOR THEIR COMMUNITIES, FOR MIGRANT JUSTICE AND FOR OTHER MARGINALISED COMMUNITIES.

THE STATE OF MIGRANT REPRESENTATION

MIGRANT COMMUNITIES ARE UNDERREPRESENTED

OUR MIND THE (REPRESENTATION) GAP REPORT 2024, HIGHLIGHTED THE REPRESENTATION GAP IN THE NUMBER OF MIGRANTS IN LONDON, VERSUS THE NUMBER OF MIGRANT COUNCILLORS. **40% OF LONDON'S RESIDENTS WERE BORN ABROAD** (MIGRATION OBSERVATORY), YET ONLY **16% OF COUNCILLORS ARE**. WE CURRENTLY ONLY HAVE THIS DATA FOR LONDON, BUT ARE COMMITTED TO GROWING OUR BODY OF EVIDENCE FOR OTHER AREAS OF THE COUNTRY.



WE BELIEVE THAT A TRUE DEMOCRACY REFLECTS THE SOCIETY IT REPRESENTS, AND THAT MORE MIGRANT VOICES SHOULD BE AT THE FOREFRONT OF DECISION -MAKING.

HARMFUL POLICIES ARE BEING ENFORCED ON MIGRANT COMMUNITIES

HOSTILE ENVIRONMENT POLICIES, ENFORCED BY SUCCESSIVE GOVERNMENTS OVER THE PAST TWO DECADES HAVE CONTRIBUTED TO A DECLINE IN THE RIGHTS AND LIVING STANDARDS OF MIGRANT COMMUNITIES. IT HAS ENACTED VIOLENCE AND HOSTILE NARRATIVES AGAINST OUR MIGRANT FRIENDS, NEIGHBOURS AND COMMUNITIES.

WE BELIEVE THAT IF MORE MIGRANTS ARE ELECTED INTO POSITIONS OF POWER THROUGH COMMUNITY ORGANISING, THEY CAN USE THEIR POWER TO CHALLENGE HARMFUL NARRATIVES, ENACT PROGRESSIVE POLICIES AND DELIVER TANGIBLE CHANGE IN FAVOUR OF MIGRANTS. THIS WILL ENSURE A MORE FAIR AND JUST SOCIETY FOR MIGRANTS AND OTHER MARGIANLISED COMMUNITIES.

ELIGIBILITY TO STAND AS A COUNCILLOR IN ENGLAND

NATIONALITY REQUIREMENTS

TO BE ELIGIBLE TO STAND AS A LOCAL COUNCILLOR IN ENGLAND
YOU MUST BE:

**A BRITISH CITIZEN, AN IRISH CITIZEN, AN ELIGIBLE COMMONWEALTH OR EU
CITIZEN, OR AN EU CITIZEN WITH RETAINED RIGHTS.**



- AN **ELIGIBLE COMMONWEALTH CITIZEN** IS A PERSON WHO DOES NOT NEED LEAVE TO ENTER OR REMAIN, OR HAS INDEFINITE LEAVE TO REMAIN, IN THE UK.

*FOR EXAMPLE, IF YOU WERE AN ASYLUM-SEEKER OR A REFUGEE FROM A
COMMONWEALTH COUNTRY, YOU WOULD NOT BE ABLE TO STAND.*

- AN **ELIGIBLE EU CITIZEN** IS A CITIZEN WHO IS FROM A COUNTRY THAT HOLDS A BILATERAL VOTING AND CANDIDACY AGREEMENT (VCR) WITH THE UK. AS OF JULY 2025, COUNTRIES WITH AGREEMENTS ARE DENMARK, LUXEMBOURG, POLAND, PORTUGAL AND SPAIN.
- IF YOU ARE AN EU CITIZEN WHO ARRIVED IN THE UK WITH LEGAL RESIDENCE BEFORE BREXIT WAS IMPLEMENTED (31/12/2020) YOU HAVE **RETAINED RIGHTS**, AND CAN THEREFORE STAND FOR LOCAL COUNCIL.

ELECTORAL COMMISSION GUIDANCE LINKED HERE.

ELIGIBILITY TO STAND AS A COUNCILLOR IN ENGLAND

OTHER REQUIREMENTS

INCLUDING THE PREVIOUS NATIONALITY AND IMMIGRATION REQUIREMENTS, TO BE ELIGIBLE TO STAND AS A LOCAL COUNCILLOR IN ENGLAND YOU MUST BE:



OVER THE AGE OF 18

AND MEET **AT LEAST ONE** OF THE FOLLOWING REQUIREMENTS:



- TO BE REGISTERED TO VOTE IN THE LOCAL AUTHORITY YOU WISH TO STAND IN
- TO HAVE LIVED OR WORKED IN THE LOCAL AUTHORITY FOR THE 12 MONTHS BEFORE YOUR NOMINATION
- TO HAVE OWNED PROPERTY IN THE LOCAL AUTHORITY FOR THE 12 MONTHS BEFORE YOUR NOMINATION

ELECTORAL COMMISSION GUIDANCE LINKED HERE.

ELIGIBILITY TO STAND AS A COUNCILLOR IN ENGLAND

DISQUALIFICATIONS

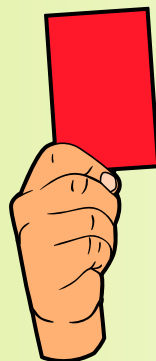
TO BE ELIGIBLE TO STAND AS A LOCAL COUNCILLOR YOU MUST MEET THE PREVIOUS REQUIREMENTS AND **CANNOT**:

BE UNDER
BANKRUPTCY
ORDERS

HAVE BEEN
SENTENCED TO OVER
THREE MONTHS IN
PRISON, INCLUDING
SUSPENDED
SENTENCES, AND
WITHOUT THE
OPTION OF A FINE

HAVE A
POLITICALLY
RESTRICTED
JOB

WORK FOR
THE SAME
LOCAL
AUTHORITY
YOU WANT
TO STAND IN



HAVE COMMITTED A
SEXUAL OFFENCE,
AND HAVE
NOT/CANNOT
APPEAL

HAVE BROKEN
ELECTION LAWS
IN THE 5 YEARS
BEFORE AN
ELECTION

BE THE MAYOR
FOR A COMBINED
AUTHORITY
THAT YOUR
LOCAL
AUTHORITY IS
UNDER

HAVE COMMITTED
AN INTIMIDATORY
OFFENCE AGAINST
A CANDIDATE,
CAMPAIGNER, OR
ELECTED
INDIVIDUAL.

ELECTORAL COMISSION GUIDANCE LINKED HERE.

COUNCILS: STRUCTURE AND FUNCTION

COUNCILS IN ENGLAND

THERE ARE **317** LOCAL AUTHORITIES IN ENGLAND. THERE **SEVERAL TYPES** OF LOCAL AUTHORITY:

- **TWO-TIER AUTHORITIES; SPLIT INTO DISTRICT/CITY/BOROUGH COUNCILS AND COUNTY COUNCILS**
- **UNITARY AUTHORITIES**
- **METROPOLITAN DISTRICTS**
- **LONDON BOROUGHS**

IN TWO- TIER AUTHORITIES, COUNTY COUNCILS ARE IN CHARGE OF SERVICES FOR THE WHOLE COUNTY, LIKE SOCIAL CARE, HIGHWAYS AND ROAD, LIBRARIES AND PUBLIC HEALTH. COUNTY COUNCILS HAVE SEVERAL DISTRICT COUNCILS WITHIN THEM, THAT ARE IN CHARGE OF LOCAL SERVICES LIKE COMMUNITY SAFETY, COUNCIL TAX, HOUSING AND LOCAL PLANNING.

UNITARY AUTHORITIES, METROPOLITAN DISTRICTS AND LONDON BOROUGHS ARE ALL SINGLE-TIER AUTHORITIES. THIS MEANS THEY ARE IN CHARGE OF ALL, OR THE MAJORITY OF, SERVICES IN THEIR AREA.



THE GOVERNMENT CURRENTLY HAS PLANS TO DECENTRALISE POWER IN ENGLAND, WHICH WILL GIVE MORE POWER AND RESOURCES TO DIFFERENT LOCAL AUTHORITIES, AND MAY CHANGE WHICH CATEGORY OF AUTHORITY THEY MAY FALL UNDER.

THE MOST IMPORTANT LOCAL AUTHORITY STRUCTURE TO UNDERSTAND IS THE ONE THAT YOU ARE BASED IN, AND/OR HOPING TO STAND IN.

A COUNCILLOR'S ROLE



COMMUNITY LEADERSHIP AND REPRESENTATION



Councillors are elected to represent their communities, to speak up on issues that are affecting residents, and to vote in favour of policies that benefit their residents. They carry out casework for their residents, e.g. assisting with housing queries, and help uplift local campaigns. Councillors build community leadership by providing knowledge of how the council functions, signposting residents on available services, guiding residents on how they can speak up and act, and by building community relationships with local organisations, charities, and businesses.

REVIEW, IMPLEMENT AND SCRUTINISE POLICIES



It is a councillor's role to ensure resident voices are being heard throughout every level of policy-making, through supporting or challenging policies. This duty varies depending on if you are involved with any committees.

PLANNING AND REGULATION

Councils are also in charge of regulating. This can relate to licenses, e.g. for late night music venues, new planning applications or monitoring water and air quality. It is the council's responsibility to ensure that individuals and businesses are complying with the law.



COUNCILLORS AND MIGRANT JUSTICE

HERE ARE SOME EXAMPLES OF HOW COUNCILLORS CAN HELP AND
SHOW SOLIDARITY WITH THEIR MIGRANT RESIDENTS.



COUNCILLORS CAN PASS A MOTION
ON VOTES FOR ALL. THIS IS A
SYMBOLIC VOTE THAT ALLOWS FOR
COUNCILS TO SHOW THEIR SUPPORT
FOR AN ISSUE. THEY CAN CONTACT
AND URGE THEIR LOCAL MP(S) TO
SUPPORT THIS ISSUE TOO.



BECOMING A CITY OR BOROUGH OF SANCTUARY.

THIS IS A COMMITMENT THAT COUNCILS CAN MAKE TO CREATE SAFE AND
WELCOMING ENVIRONMENTS TO THOSE SEEKING SANCTUARY, ARE REFUGEES,
ASLYUM-SEEKERS AND MIGRANTS.



GETTING THE COUNCIL TO LOBBY THE GOVERNMENT TO STOP HOSTILE
IMMIGRATION POLICIES AGAINST OUR COMMUNITIES, LIKE HACKNEY
COUNCIL'S MOTION DID IN JANUARY 2025.



GETTING MIGRANT COMMUNITIES
REGISTERED TO VOTE! COUNCILLORS
CAN HELP PROVIDE THEIR RESIDENTS
WITH INFORMATION ON VOTING
ELIGIBILITY AND ASSISTANCE WITH
REGISTERING TO VOTE.

**MIGRANT
VOTES
MIGRANT
POWER**

THE JOURNEY TO GETTING ELECTED:



UNDERSTANDING WHAT IT MEANS TO BE A COUNCILLOR

THE FIRST THING IS TO UNDERSTAND THE ROLE OF A COUNCILLOR AND SEE IF ITS THE RIGHT PATH FOR YOU.

READ OUR BREAKDOWN OF LOCAL AUTHORITIES AND THE ROLE OF COUNCILLORS IN THE PREVIOUS PAGES.

THERE ARE SOME RESOURCES LINKED AT THE END OF THE TOOLKIT, INCLUDING BE A COUNCILLOR PROGRAMMES.

ADDITIONALLY, YOU CAN HEAD TO OUR FAQS PAGE TO FIND OUT MORE ABOUT WORKING HOURS, SALARY AND EXPECTATIONS.

MANY COUNCILLORS OFFER SHADOWING OPPORTUNITIES TO ALLOW ASPIRING COUNCILLORS TO BETTER UNDERSTAND THE WORK. EMAIL LOCAL COUNCILLORS WHO MAY SHARE SIMILAR POLICY INTERESTS AS YOU TO SEE IF THIS IS SOMETHING THEY MAY OFFER.

JOIN A POLITICAL PARTY OR DECIDE TO STAND AS AN INDEPENDENT

GREAT! YOU HAVE DECIDED TO REPRESENT AND ADVOCATE FOR YOUR COMMUNITY!

NEXT, YOU SHOULD FIND OUT WHEN THE NEXT LOCAL ELECTIONS ARE IN YOUR AREA,

THEN YOU SHOULD ASSESS IF YOU WOULD LIKE TO STAND FOR A POLITICAL PARTY, OR AS AN INDEPENDENT.

YOU CAN DO THIS BY RESEARCHING THE POLITICAL PARTIES AND THEIR VALUES, E.G. BY COMPARING THEIR 2024 MANIFESTOS, SEARCHING FOR THEIR HISTORY TO UNDERSTAND THEIR POLITICAL POSITIONS, ATTENDING THEIR PUBLIC MEETINGS, AND SEEING HOW THEY ARE RESPONDING TO CURRENT EVENTS ONLINE.

YOU SHOULD ALSO GET INVOLVED WITH YOUR LOCAL PARTY AS SOON AS POSSIBLE, E.G. BY GOING CANVASSING, JOINING THE EXECUTIVE COMMITTEE AND GETTING TO KNOW THE LOCAL BRANCH AND MEMBERS.

IF YOU ARE HOPING TO STAND AS AN INDEPENDENT YOU SHOULD BEGIN BY RESEARCHING FURTHER HOW TO BUILD A CAMPAIGN AS AN INDEPENDENT. IT IS IMPORTANT TO BUILD A TEAM AROUND YOU THAT YOU CAN TRUST AND RELY ON.

STANDING AS AN INDEPENDENT CAN BE MUCH MORE DIFFICULT THAN STANDING AS A PARTY CANDIDATE, DUE TO THE RESOURCES AND EXPERIENCES OF THE PARTY. HOWEVER, IT IS NOT IMPOSSIBLE. IT REQUIRES WORKING HARD WITH AND FOR YOUR COMMUNITY.

IN BOTH CASES, YOU SHOULD CONTINUE YOUR WORK WITHIN YOUR COMMUNITY.

WHAT WARD YOU ARE YOU GOING REPRESENT?

ONCE YOU HAVE CHOSEN IF YOU WOULD LIKE TO STAND FOR A POLITICAL PARTY OR AS AN INDEPENDENT, YOU SHOULD DECIDE WHICH WARD YOU WOULD LIKE TO STAND IN.

PARTIES MAY HAVE TARGET WARDS IN WHICH THEY WOULD LIKE YOU TO STAND.

YOU SHOULD RESEARCH THE WARDS IN YOUR LOCAL AUTHORITY TO FIND OUT WHO LIVES AND VOTES THERE, AND HOW LIKELY THEY ARE TO VOTE FOR YOU. MANY ASPIRING COUNCILLORS ARE PASSIONATE ABOUT STANDING IN THE WARD THEY LIVE IN. FOR SOME THIS MIGHT BRING ITS DOWNSIDES.

YOU CAN DO THIS BY USING LOCAL AUTHORITY DEMOGRAPHIC STATISTICS AND ACCESSING THE ELECTORAL ROLL. POLITICAL PARTIES USUALLY PROVIDE THIS INFORMATION.





THE SELECTION PROCESS

A SELECTION PROCESS IS HOW A POLITICAL PARTY CHOSSES CANDIDATES. IT DOES NOT APPLY TO THOSE WHO ARE STANDING AS INDEPENDENTS.

POLITICAL PARTIES OFTEN BEGIN THEIR CANDIDATE SELECTION PROCESSES ONE YEAR BEFORE AN ELECTION, BUT THIS WILL VARY DEPENDING ON YOUR LOCAL PARTY BRANCH.

SELECTION PROCESSES VARY BETWEEN PARTIES BUT CAN INVOLVE A FORM TO REGISTER YOUR INTEREST, AN INTERVIEW AND/OR A HUSTINGS. IN BOTH, YOU WILL HAVE TO DEMONSTRATE YOUR KNOWLEDGE OF THE PARTY, OF LOCAL AND NATIONAL ISSUES, AND OF HOW THE LOCAL COUNCIL IS RAN. IN SOME CASES, ONCE YOU PASS THIS INITIAL ASSESSMENT YOU ARE THEN VOTED ON BY LOCAL PARTY MEMBERS.

IT IS IMPORTANT TO NOTE THAT SOME PARTIES HAVE CONDITIONS ON WHO CAN STAND. FOR EXAMPLE, YOU MIGHT HAVE TO BE A MEMBER FOR ATLEAST ONE YEAR BEFORE YOU APPLY TO STAND WITH YOUR PARTY (TWO YEARS BEFORE THE ELECTION) OR TO LIVE IN THE LOCAL AUTHORITY THAT YOU WANT TO STAND IN. IT IS IMPORTANT TO CHECK WITH YOUR LOCAL BRANCH ON THESE CONDITIONS.

THE NOMINATION PROCESS

ONCE YOU HAVE BEEN SELECTED BY YOUR PARTY AS AN OFFICIAL CANDIDATE, OR CHOSEN TO STAND AS AN INDEPENDENT, YOU MUST BE NOMINATED.

THIS REQUIRES FILLING OUT YOUR NOMINATION PAPERS, COLLECTING TWO SIGNATURES AND SUBMITTING THE FORM WITHIN THE DEADLINE TO THE RETURNING OFFICER. THIS DEADLINE IS USUALLY 19 WORKING DAYS BEFORE THE ELECTION.

A RETURNING OFFICER IS A PERSON THAT ENSURES ELECTIONS ARE RAN EFFECTIVELY ([ELECTORAL COMISSION DEFINITION HERE](#)).

FOR YOUR SIGNATURE COLLECTION THE INDIVIDUALS MUST BE REGISTERED TO VOTE IN THE WARD YOU WOULD LIKE TO STAND IN, MUST MATCH THE EXACT DETAILS THAT ARE ON THE ELECTORAL REGISTER, AND THEY CAN'T SIGN ANY OTHER NOMINATION PAPERS FOR THE SAME ELECTION.

IF YOU ARE STANDING FOR A PARTY, YOUR PARTY ORGANISER IS LIKELY TO DO A LOT OF THIS WORK. IF YOU ARE GOING TO STAND AS AN INDEPENDENT YOU WILL HAVE TO FULLY UNDERSTAND THE PROCESS, TIMELINE AND THE DEADLINES YOURSELF.

CAMPAIGN, CAMPAIGN, CAMPAIGN!

YOU CAN ALWAYS CAMPAIGN , BUT THERE ARE SPECIFIC REQUIREMENTS IN THE “PRE-ELECTION PERIOD” (SIX WEEKS UP TO AN ELECTION).

CAMPAIGNS SHOULD FOCUS ON CENTRING ISSUES IMPORTANT TO THE LOCAL COMMUNITY, SUCH AS HOUSING AND THE COST OF LIVING CRISIS.

THERE ARE DIFFERENT STRATEGIES TO CAMPAIGNING. SOME HAVE BEEN LINKED IN THE RESOURCE LIST ON PAGE 18.



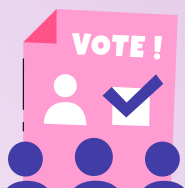
SPENDING LIMITS

THE SPENDING LIMIT DURING THE REGULATED PERIOD IS £960, PLUS 8P FOR EVERY PERSON REGISTERED TO VOTE IN THAT WARD, BEFORE THE VOTER-REGISTRATION DEADLINE. THE REGULATED PERIOD LASTS FROM THE DAY AFTER YOU BECOME AN OFFICIAL CANDIDATE, UNTIL THE DAY OF THE ELECTION



THE ELECTORAL REGISTER

YOU ARE ALLOWED TO ACCESS THE ELECTORAL REGISTER TO IDENTIFY ELIGIBLE VOTERS AND WHERE THEY LIVE.



LOCAL ISSUES

YOU SHOULD CONSIDER YOUR CAMPAIGN IN RELATION TO ISSUES THE LOCAL COMMUNITY CARE ABOUT, SUCH AS HOUSING OR THE REOPENING OF LOCAL GREEN SPACES!



‘GET OUT THE VOTE’

‘GET OUT THE VOTE’ (GOTV) INITIATIVES INCLUDE CARRYING-OUT VOTER-REGISTRATION DRIVES TO ENSURE THOSE ELIGIBLE ARE REGISTERED BEFORE THE DEADLINE, AS WELL AS ON THE DAY OF THE ELECTION TO GET THOSE REGISTERED TO ACTUALLY VOTE!

GET ELECTED!

AND IF YOU DON'T SUCCEED, DO NOT GIVE UP HOPE.
SEATS ARE UP FOR RE-ELECTION EVERY 4 YEARS,
THERE ARE LOCAL COUNCIL ELECTIONS EVERY TWO YEARS IN SOME
LOCAL AUTHORITIES THAT ELECT THEIR COUNCILLORS IN THIRDS,
AND BY-ELECTIONS CONSTANTLY TAKE PLACE TOO.

FREQUENTLY ASKED QUESTIONS

DO I GET PAID?

COUNCILLORS ARE NOT PAID A SALARY BUT THEY ARE GIVEN AN ALLOWANCE THAT VARIES BY LOCAL AUTHORITY. IN SOME INSTANCES THE BUDGET ALLOCATION IS £2,000 PER YEAR, AND IN OTHERS IT IS £16,000. THE ALLOWANCE INCREASES DEPENDING ON ROLES YOU TAKE WITHIN THE COUNCIL, E.G. IF YOU ARE ON A COMMITTEE.

YOU CAN FIND YOUR COUNCILLOR SALARIES ON YOUR LOCAL COUNCIL'S WEBSITE. FOR EXAMPLE YOU CAN FIND THE CURRENT AND PREVIOUS ALLOWANCES FOR DURHAM COUNTY COUNCILLORS [HERE](#).

WHAT ARE THE WORKING HOURS?

ON AVERAGE, COUNCILLORS DEDICATE 22 HOURS A WEEK ON THEIR DUTIES. AGAIN, THIS CAN VARY, WITH SOME COUNCILLORS DEDICATING MORE OR LESS TIME.

THIS IS A BIG COMMITMENT FOR THOSE WHO ARE WORKING FULL TIME AND HAVE CARING RESPONSIBILITIES, SO IT IS IMPORTANT TO ASK YOUR LOCAL AUTHORITY WHERE, WHEN AND HOW OFTEN COUNCIL MEETINGS TAKE PLACE, AND FOR YOU TO ASSESS IF YOU ARE ABLE TO DEDICATE THIS TIME, IN THIS CAPACITY, TO YOUR LOCAL COMMUNITY.

YOU MAY NEED TO CHECK WITH YOUR WORK IF YOU CAN REDUCE YOUR HOURS OR WORK FLEXIBLE HOURS.

DO I NEED SPECIFIC EXPERIENCE?

NO, YOU DO NOT.

THE BEST COUNCILLORS COME FROM A RANGE OF BACKGROUNDS. IF YOU ARE PASSIONATE ABOUT YOUR LOCAL COMMUNITY, PASSIONATE ABOUT MAKING PEOPLES' LIVES BETTER AND ENJOY CONNECTING WITH PEOPLE FROM DIFFERENT COMMUNITIES, YOU WILL BE A GREAT COUNCILLOR!

YOU CAN READ MORE FAQs HERE ON THE LGA WEBPAGE: [LGA: NEW COUNCILLORS' FREQUENTLY ASKED QUESTIONS](#)

NEED HELP STARTING YOUR JOURNEY?

AT MIGRANT DEMOCRACY PROJECT, WE ARE ALWAYS LOOKING TO HELP MORE MIGRANT LEADERS BUILD THEIR SKILLS, BECOME MORE VOCAL IN THEIR COMMUNITIES, AND TO GET ELECTED.

YOU CAN FIND OUT MORE ABOUT OUR PREVIOUS MPOWER PROGRAMMES, THAT PROVIDE INTENSIVE TRAINING, KNOWLEDGE AND RESOURCES, [HERE](#).

TO FIND OUT MORE ABOUT FUTURE PROGRAMMES, WEBINARS, AND EVENTS NEAR YOU, JOIN US:

WWW.MIGRANTDEMOS.ORG.UK/JOIN-US

IF YOU REQUIRE FURTHER HELP, AND WOULD LIKE TO SPEAK TO A MEMBER OF THE TEAM, CONTACT OUR ELECTIONS AND TRAINING MANAGER AT ROISE@MIGRANTDEMOS.ORG.UK

HERE ARE SOME PICTURES OF OUR PREVIOUS MPOWER: COUNCILLOR COHORT; CARRYING OUT VOTER-REGISTRATION DRIVES, CANVASSING FOR THEIR POLITICAL PARTIES, AND HOSTING COMMUNITY EVENTS FOCUSED ON POLITICAL EDUCATION, SERVICE PROVISION AND COMMUNITY BUILDING.



RESOURCES

LINKS TO HELP YOU CONTINUE YOUR POLITICAL JOURNEY TO BECOME A LOCAL COUNCILLOR

WHAT LOCAL COUNCILS AND COUNCILLORS DO

[GOV.UK: UNDERSTANDING HOW YOUR LOCAL COUNCIL WORKS](#)

[LGA: AN INTRODUCTION TO LOCAL GOVERNMENT](#)

[LGA: THE ROLE OF A COUNCILLOR](#)

[NEW LOCAL: WHAT DO COUNCILS DO?](#)

WHO CAN STAND AND HOW TO STAND?

[THE ELECTORAL COMMISSION: GUIDANCE FOR CANDIDATES IN ENGLAND](#)

[ELECT-HER: RESOURCES FOR STARTING YOUR POLITICAL JOURNEY](#)

[THE ELECTORAL COMMISSION: COMPLETING YOUR NOMINATION PAPERS VIDEO](#)

[ATTEND BE A COUNCILLOR EVENTS HOSTED BY THE LGA AND/OR YOUR LOCAL
AUTHORITY.](#)

CAMPAIGNING RESOURCES

[ACT BUILD CHANGE: SKILLS TO BUILD COMMUNITY POWER](#)

[COMMUNITY ORGANISERS: A GUIDE TO POWER ANALYSIS IN COMMUNITY
ORGANISING](#)

[CAMPAIGN NARRATIVE](#)

[LGA: COUNCIL TOOLKIT - PLANNING YOUR LOCAL CAMPAIGN](#)

[THE ELECTORAL COMMISSION: CAMPAIGNING TACTICS AND LAWS](#)

[SEEDS FOR CHANGE: CONFLICT IN OUR GROUPS - A GUIDE FOR GRASSROOTS
ACTIVISTS](#)

