

Healthworks Room Hire

In Lemington and Benwell

Healthworks offers a variety of well-equipped, flexible, and fully accessible spaces ideal for training, meetings, exercise classes, and community activities - all at very competitive rates.



Room Hire Information

Healthworks offers a variety of rooms for hire, perfect for local community groups, businesses, and individuals looking for accessible, well-equipped spaces.

What's included:

- Free Wi-Fi in all rooms
- Excellent public transport links
- Free parking on-site or nearby
- Full accessibility, including lift access to all floors
- Tea and coffee-making facilities available

While we don't provide in-house catering, you're welcome to make your own arrangements.

For local catering, consider Maximos Deli, a family-run business based at The Lemington Centre. To discuss options, you can contact them directly at maximosdeli26@gmail.com.

Explore our available spaces today and find the perfect venue for your next meeting, training session, or community activity.

Please note: we are unable to accommodate children's parties or celebration events.

Scan for current room prices and capacities



Our Venues



Health Resource
Centre
Adelaide Terrace
Benwell
NE4 8BE
0191 272 4244

[Get Directions](#)



The Lemington
Centre
Tyne View
Lemington
NE15 8RZ
0191 264 1959

[Get Directions](#)



0191 272 4244 - enquiries@hwn.org.uk - www.healthworksne.org.uk

Welcome to The Lemington Centre

A bright, modern venue offering a range of modern, accessible and flexible rooms.

It's next to free parking and has excellent bus links to Newcastle. Free Wi-Fi is available throughout the building.

Onsite there is a fully equipped Gym, Maximo's Deli, a Pre-School and a Community Garden



The Sports Hall



The Board Room



Maximo's Deli



The Community Garden



The Activity Room



Healthworks
the community health charity

0191 272 4244 - enquiries@hwn.org.uk - www.healthworksne.org.uk

Spaces for Hire at The Lemington Centre

The Lemington Centre – Modern, Flexible Spaces with Excellent Access.

The Lemington Centre offers on-site parking and direct bus links to the city centre and surrounding areas, making it easily accessible however you choose to travel.

The Hall -

A spacious sports hall suitable for a wide range of activities, including exercise classes, sporting events, and large conferences. The hall features floor markings for badminton, indoor football, volleyball, and basketball.

The Boardroom -

A modern, comfortable space equipped with a 50" Smart TV, ideal for meetings, training sessions, presentations, and conferences.

The Activity Room -

A flexible space with vinyl flooring, a mirrored wall, and a 50" Smart TV - perfect for meetings, gentle exercise, or physical activities. It also connects to the sports hall and can be hired as a social space in combination.

The Community Garden -

We also have a garden area that may be available during school holidays - please contact us to check availability.

Other spaces may be available - please refer to the latest Room Hire information by scanning the code.



Welcome to The Health Resource Centre

Located in the West End of Newcastle, the Health Resource Centre offers a variety of flexible, accessible rooms for hire.

It's easy to reach by public transport, with free on-street parking and a nearby car park.

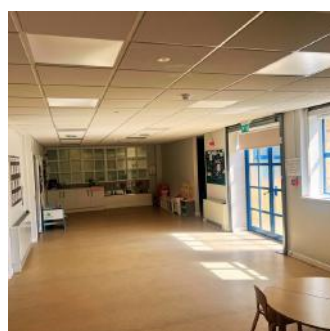
All rooms include free Wi-Fi, and the building is fully accessible with lift access to all floors.



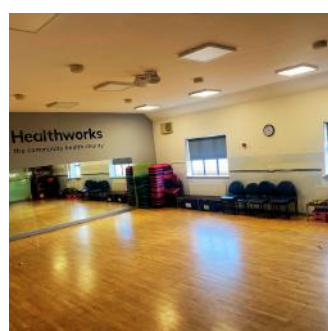
The Meeting Place



The Activity Room



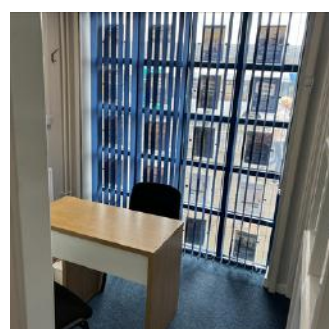
The Exercise Studio



The Foyer Room



Reception Booth



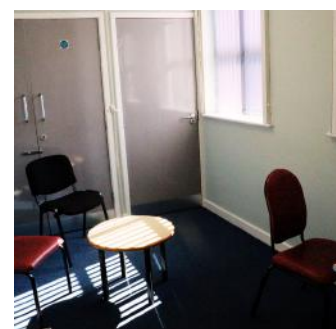
The Breakout Room



The Courtyard



The Small Meeting Room



0191 272 4244 - enquiries@hwn.org.uk - www.healthworksne.org.uk

Spaces for Hire at The Health Resource Centre

The Health Resource Centre – Located in the Heart of the West End.

Conveniently located with easy access from Elswick Road, Westgate Road, and Scotswood Road, the Health Resource Centre is an ideal choice for meetings, events, and activities. There is on-street parking directly outside, as well as a free car park nearby.

Available Spaces for Hire:

The Meeting Place - A spacious boardroom ideal for formal meetings, conferences, or presentations. Features a detachable boardroom-style table and a 50" smart TV.

Exercise Studio - A versatile, studio-style sports hall suited for fitness classes, sporting events, dance sessions, or larger conferences.

The Foyer Room - A comfortable medium-sized room located just off the reception area, with direct access to the courtyard (additional charges may apply).

The Activity Room - A large, practical space equipped with washing facilities, children's sinks, baby changing toilets, and vinyl flooring—perfect for hands-on workshops and interactive activities. (TV display available on request)

The Small Meeting Room - A compact, cosy space ideal for one-to-one meetings or private discussions.

The Breakout Room - A medium sized room equipped with a smart TV, Kitchenette and whiteboard. Perfect for one to one meetings, groups and training courses.

Reception Booth: Adjacent to our reception area. It is a great space to hold an information stall or use as a personal non confidential workspace.

Interested in booking a space?

Get in touch today to check availability, ask questions, or arrange a visit -we're happy to help you find the right space for your needs!

Please contact us:

Email: enquiries@hwn.org.uk

Telephone: 0191 272 4244

Website:

www.healthworksne.org.uk

Visit:

The Health Resource Centre
Adelaide Terrace
Benwell, NE4 8BE

The Lemington Centre
Tyne View
Lemington, NE15 8RZ

Scan the code for more information about the current rooms available for hire, prices and capacities





Healthworks

the community health charity

Helping people of all ages across the
North East live longer, healthier and
happier lives since 1995

www.healthworksne.org.uk

0191 272 4244

enquiries@hwn.org.uk

