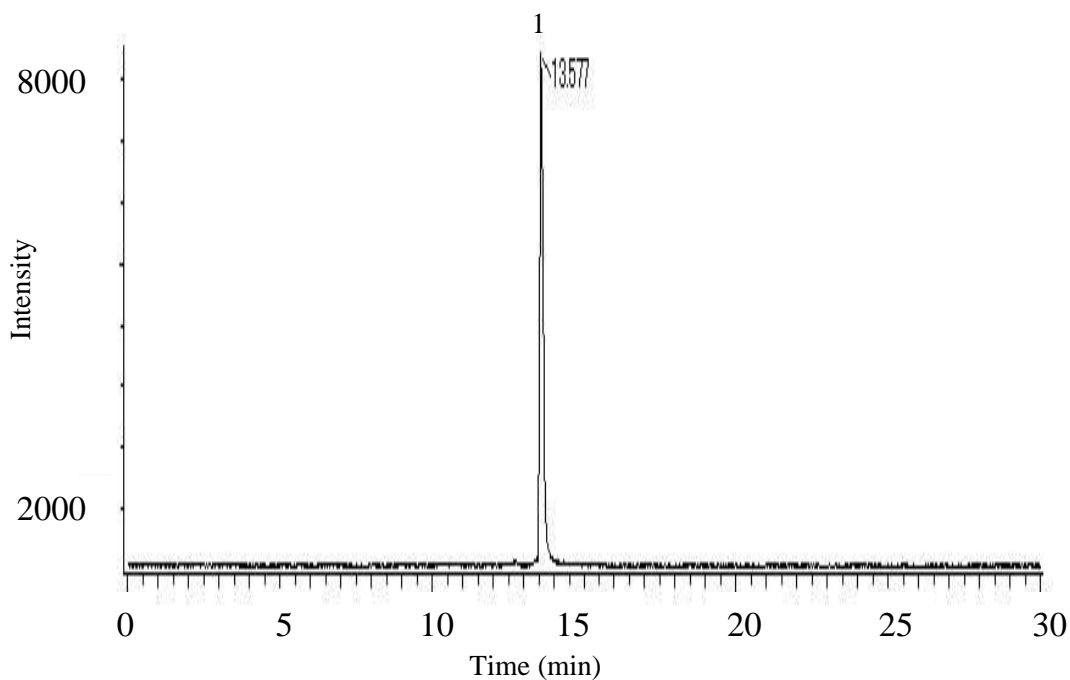


# InertSearch™ for LC

Inertsil® Applications

## Analysis of Phosphopeptide

Data No. LA835-0700



### Conditions

**System** : AccuStream Capillary HPLC system  
**Column** : MonoCap C18 Fast-flow (150 x 0.075 mm I.D.)  
**Column Cat. No.** : 5020-10212  
**Trap Column** : MonoCap C18 Trap Column (50 x 0.075 mm I.D.)  
**Column Cat. No.** : 5020-10028  
**Sprayer** : MonoSpray FS (50 x 0.050 mm I.D.)  
**Cat. No.** : 5010-20006  
**Eluent** : A) 0.1 % HCOOH in CH<sub>3</sub>CN  
B) 0.1 % HCOOH in H<sub>2</sub>O  
A/B = 10/90 - 30 min - 50/50, v/v  
**Flow rate** : 0.3 μL/min  
**Col. Temp.** : Ambient  
**Detection** : Nano-ESI MS positive TIC (JMS-T100-LC, m/z : 500 - 1500)  
**Injection Vol.** : 5 μL  
**Analyte** : Phosphopeptides

### Solutes:

1. Val-Asn-Gln-Ile-Gly-pThr-Leu-Ser-Glu-Ser-Ile-Lys  
p: phosphoric group