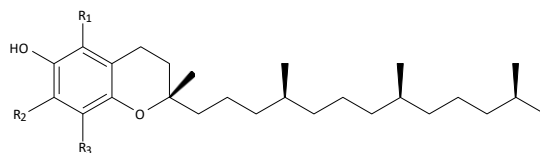


This is an application data of analyzing Vitamin E in food by HPLC. Vitamin E is a fat-soluble vitamin, which exists tocopherol and tocotrienol. Vitamine E were used as antioxidant.

Detection was made by Fluorescence detector and confirmed a good peak shape.

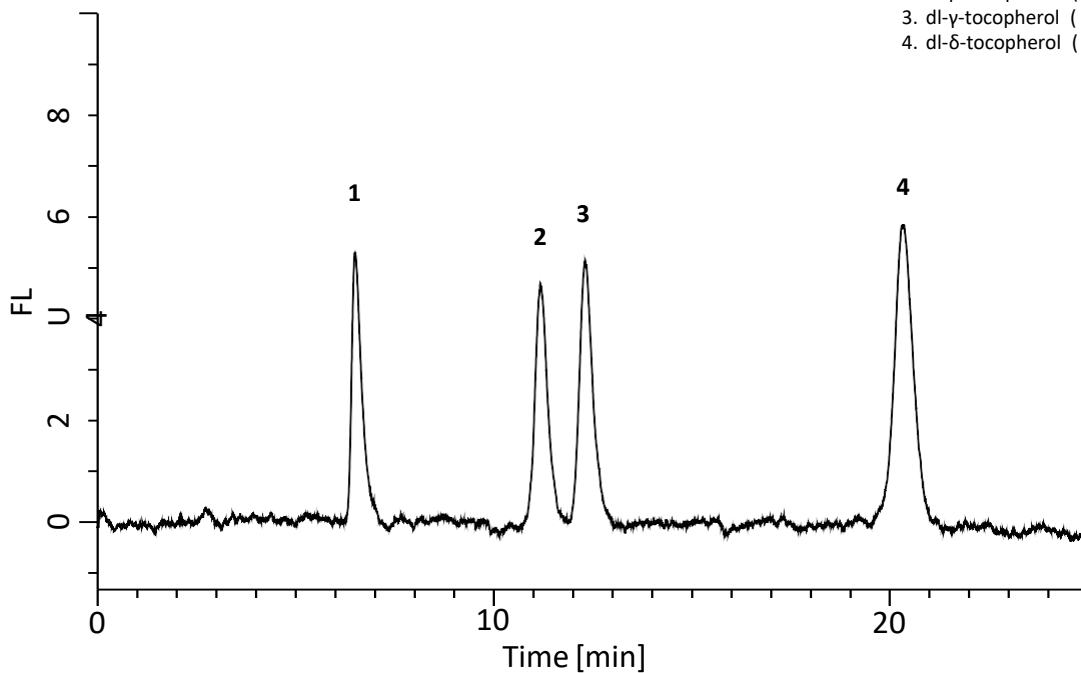
(K. Suzuki)

Chemical Structures



V.E.	R1	R2	R3
α -tocopherol	CH ₃	CH ₃	CH ₃
β -tocopherol	CH ₃	H	CH ₃
γ -tocopherol	H	CH ₃	CH ₃
δ -tocopherol	H	H	CH ₃

Analysis of Standard Solution



1. dl- α -tocopherol (25 μ g/L)
2. dl- β -tocopherol (25 μ g/L)
3. dl- γ -tocopherol (25 μ g/L)
4. dl- δ -tocopherol (25 μ g/L)

HPLC Conditions

Column : Inertsil NH2
(5 μ m, 250 x 4.6 mm I.D.)

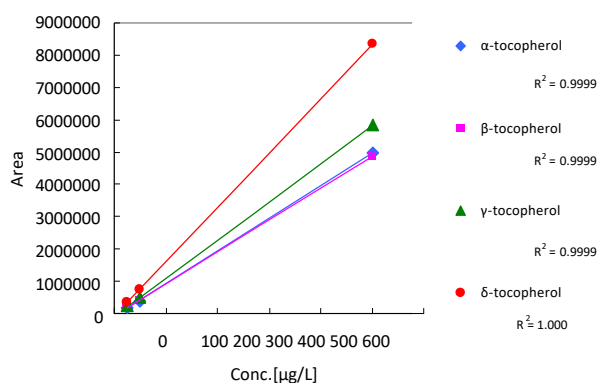
Col. Temp. : 40°C

Detection : FL Ex 298 nm Em 330 nm

Eluent : A) CH₃COOH
B) 2-Propanol
C) Hexane
A/B/C = 5/6/1000, v/v

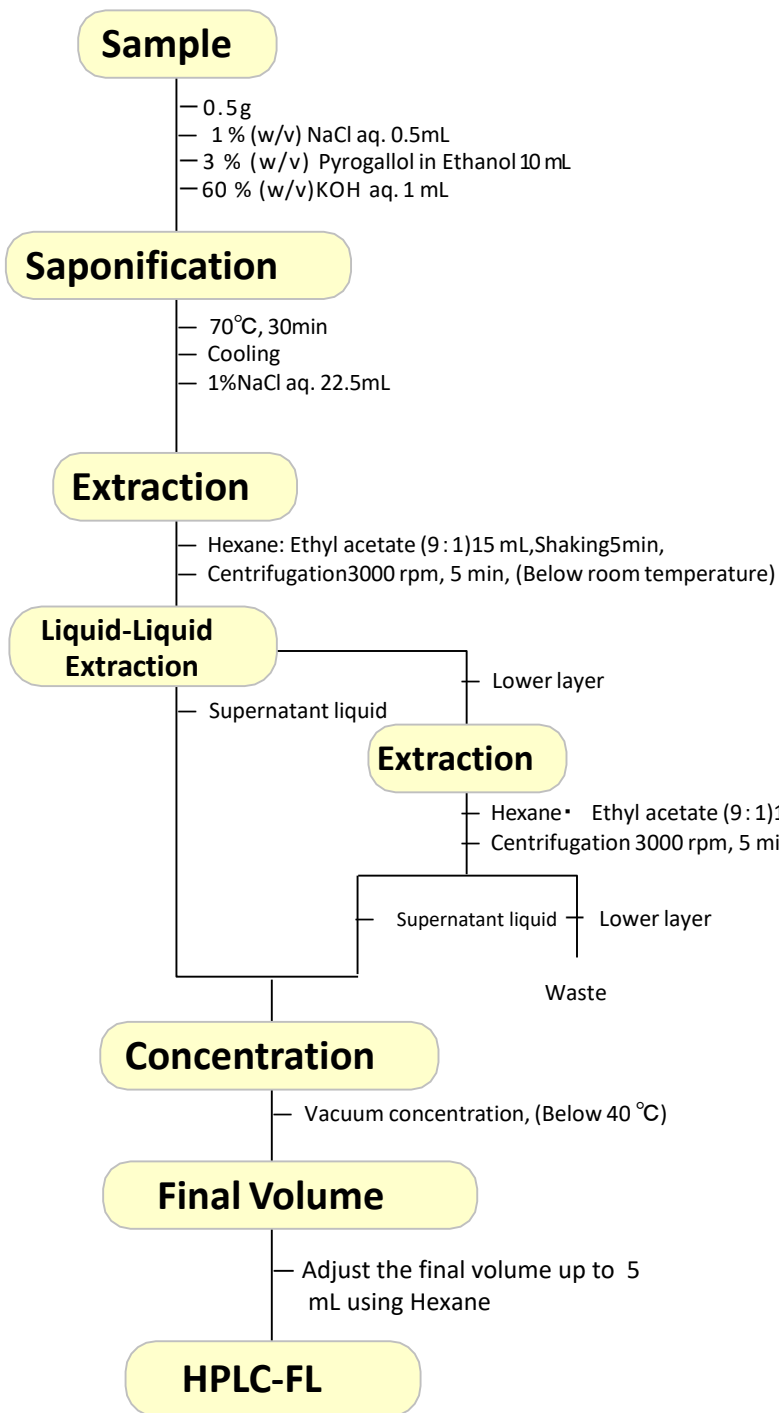
Flow Rate : 1.2 mL/min

Injection Vol. : 20 μ L

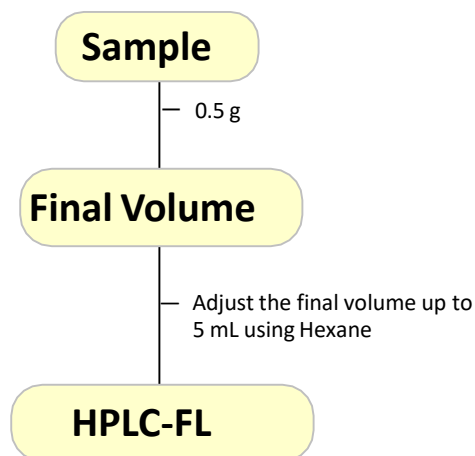


Calibration Curve

General Foods

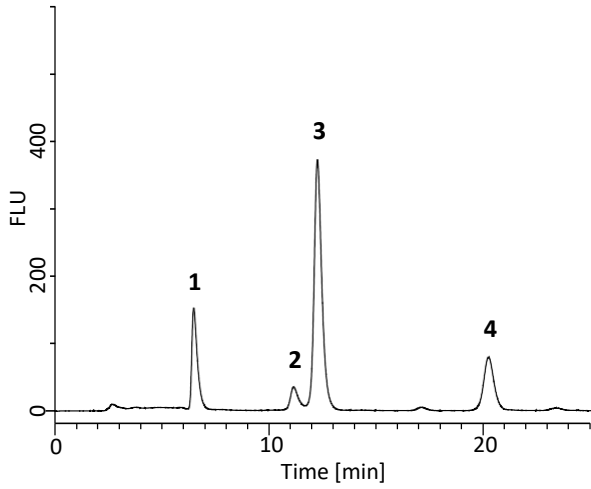


Fat

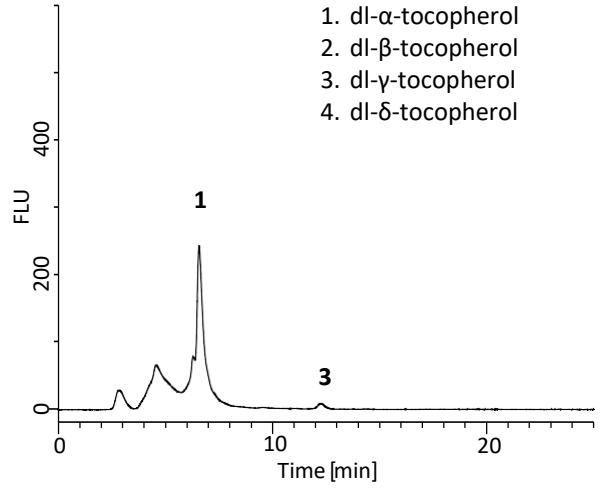


Analysis of Foods

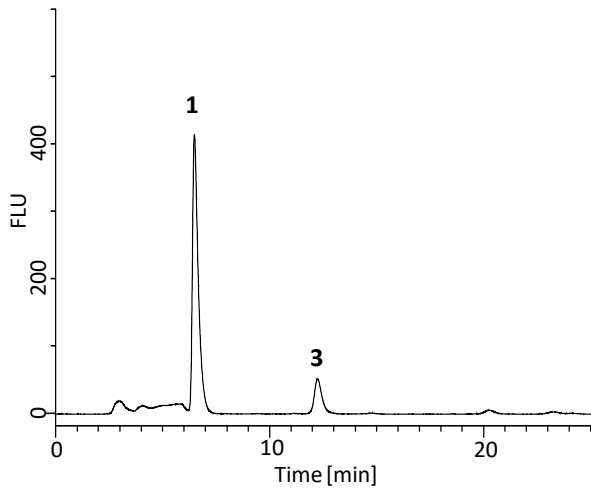
- 1. dl- α -tocopherol
- 2. dl- β -tocopherol
- 3. dl- γ -tocopherol
- 4. dl- δ -tocopherol



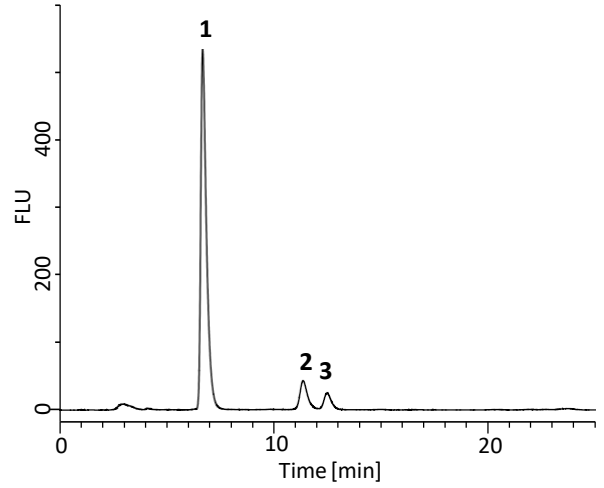
Cooking oil (a 10 times dilution)



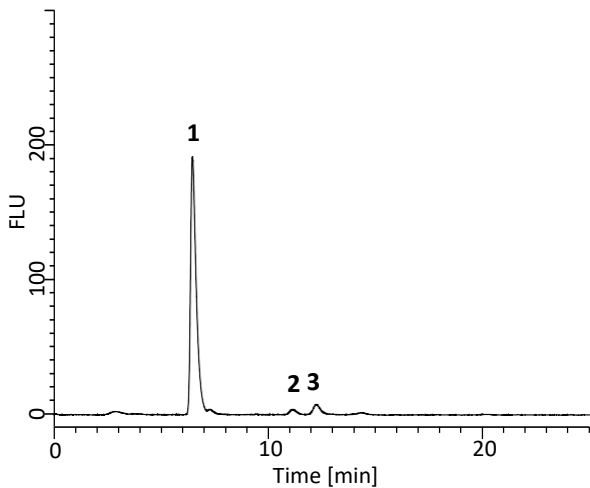
Butter



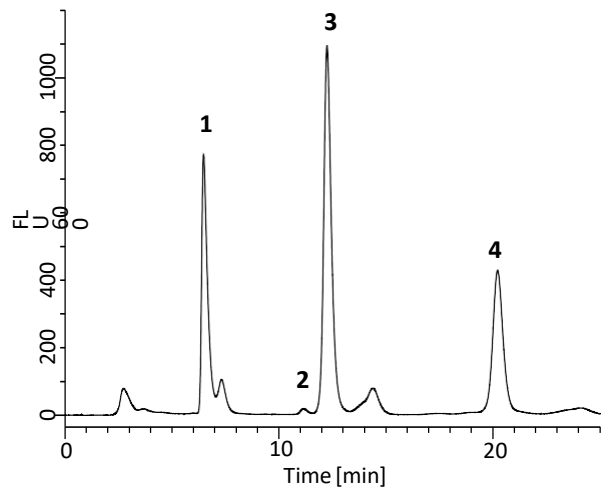
Broiled eel



Mulukhiya



Almond (a 10 times dilution)



Baby formula

GL Sciences disclaims any and all responsibility for any injury or damage which may be caused by this data directly or indirectly. We reserve the right to amend this information or data at any time and without any prior announcement.

GL Sciences, Inc. Japan

22-1 Nishishinjuku 6-Chome
Shinjuku-ku, Tokyo,
163-1130, Japan
Phone: +81-3-5323-6620
Fax: +81-3-5323-6621
Email: world@glsc.co.jp
Web: www.glsciences.com

GL Sciences B.V.

De Sleutel 9
5652 AS Eindhoven
The Netherlands
Phone: +31 (0)40 254 95 31
Email: info@glsciences.eu
Web: www.glsciences.eu

GL Sciences (ShangHai) Ltd.

Tower B, Room 2003,
Far East International Plaza,
NO,317 Xianxia Road,
Changning District.
Shanghai, China P.C. 200032
Phone: +86 (0)21-6278-2272
Email: contact@glsciences.com.cn
Web: www.glsciences.com.cn

GL Sciences, Inc. USA

4733 Torrance Blvd. Suite 255
Torrance, CA 90503
Phone: 310-265-4424
Fax: 310-265-4425
Email: info@glsciencesinc.com
Web: www.glsciencesinc.com

International Distributors

Visit our Website at:
<https://www.glsciences.com/company/distributor.html>

