

vertisol
woven covering



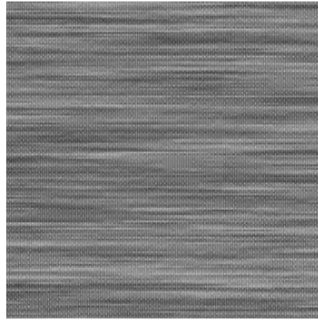
fitnice
FLOOR

HunterDouglas 
Architectural

Panama



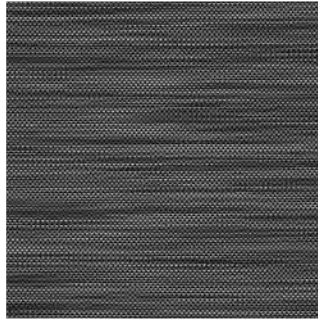
Uno*



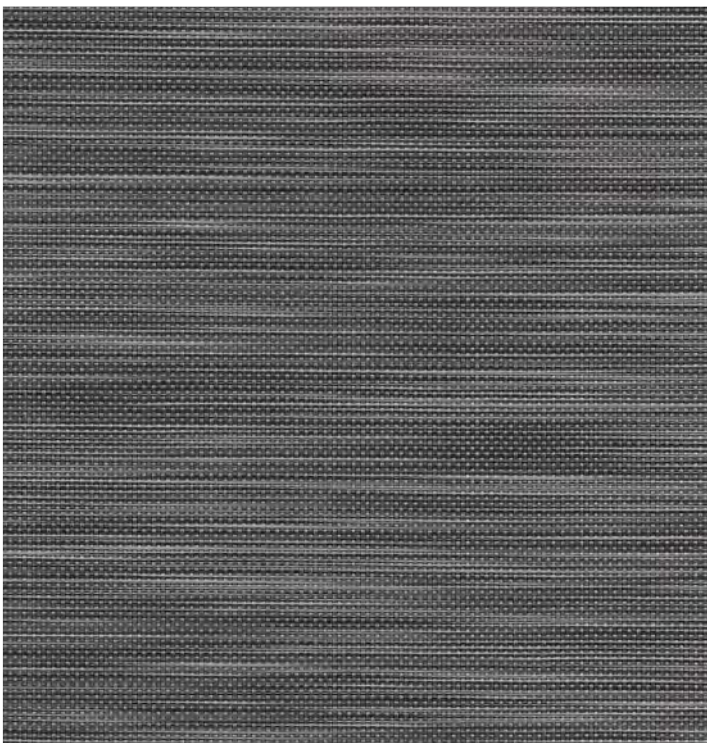
Tres*



Seis*



Dos*



Cuatro*

All colours are available in:

Roll 



Square Tile 

Diamond Tile 

Plank Tile 

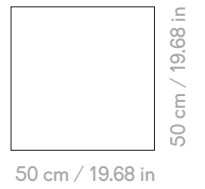
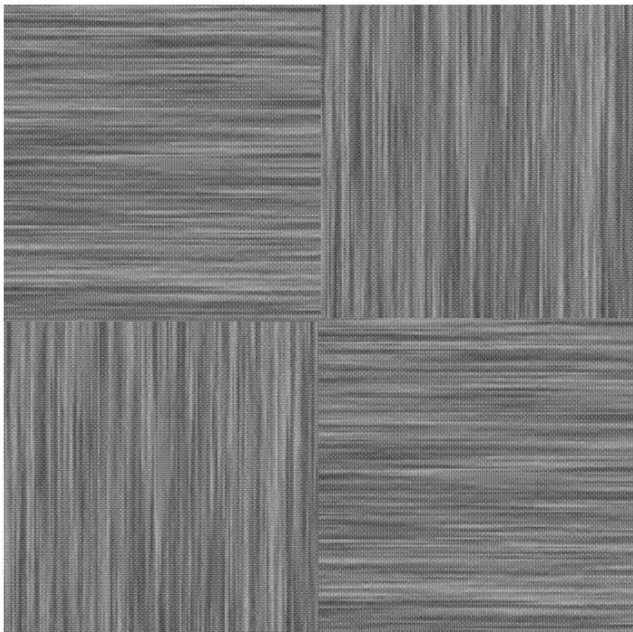
Square Tiles and Plank Tile are also available
in Raised Access Floor Tiles



* Recommended for tiles only. If in Rolls,  
all seams are very visible.



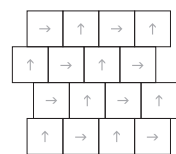
Panama Tres



Ready for FITNICE® Composer



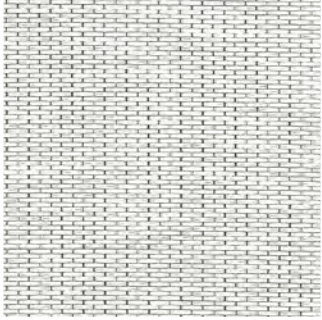
Canvas 1



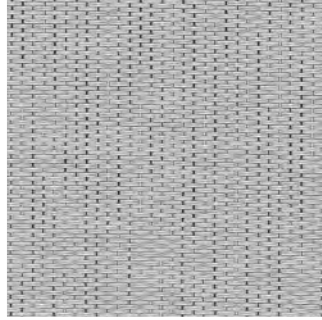
Canvas 2

Square

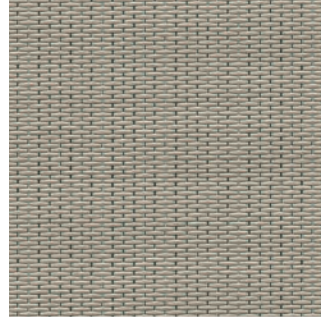
Chroma



Pure White*



Ash



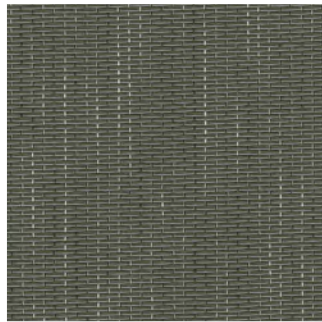
Taupe



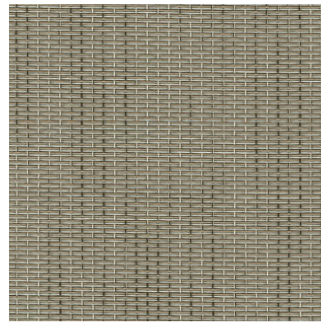
Desert



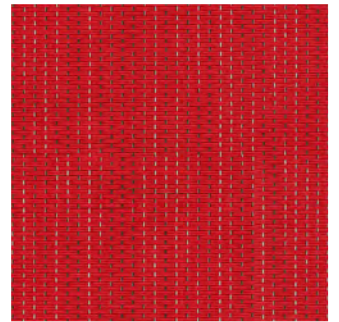
Macchiato



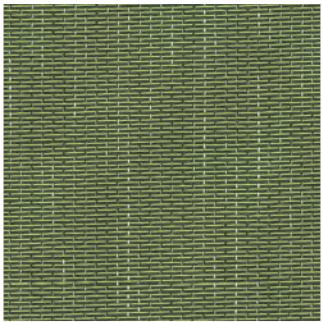
Faded Denim



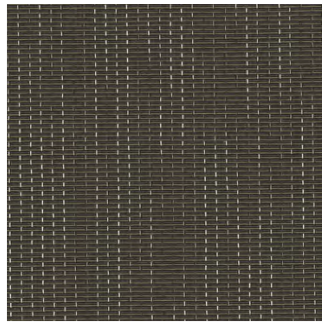
Golden Beach



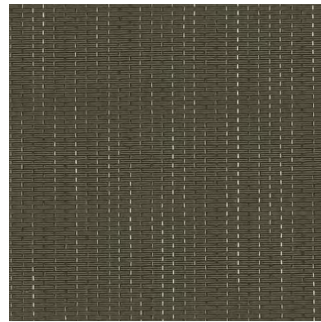
Red



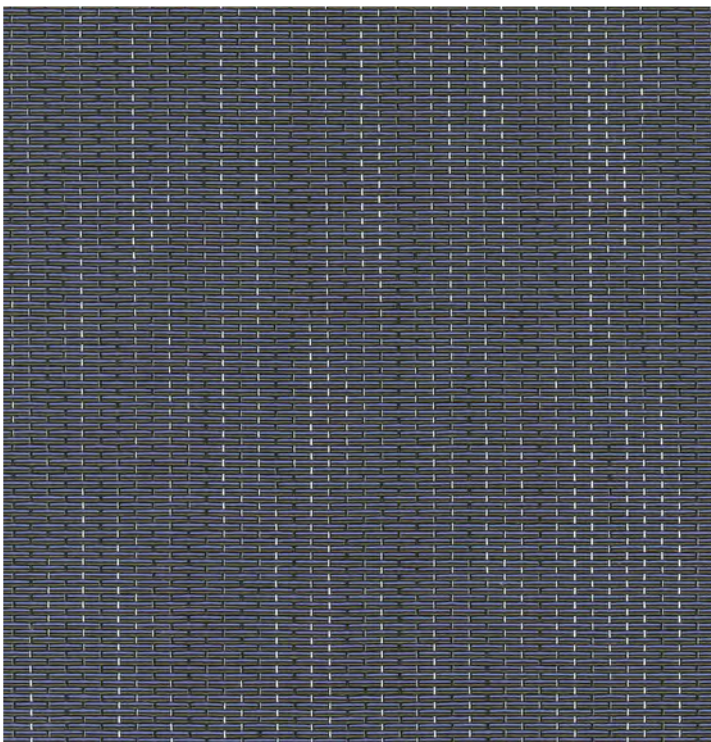
Jungle



Dark Slate







Bronze

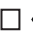




Parisian Blue

All colours are available in:

- Roll 
- Square Tile 
- Diamond Tile 
- Plank Tile 

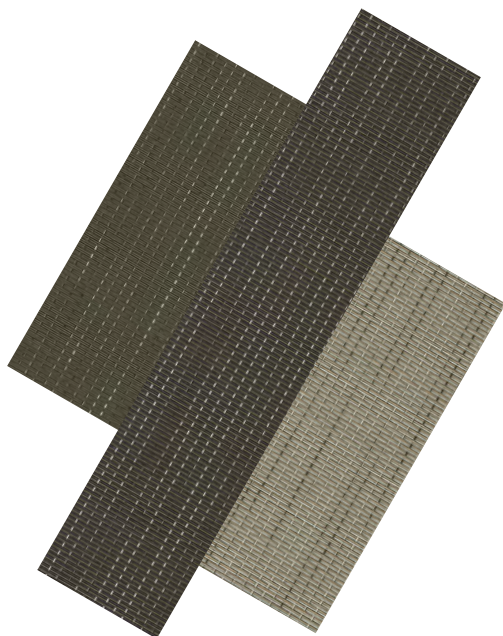
Square Tiles and Plank Tile are also available
in Raised Access Floor Tiles

 * Seams are more visible in   

* Pure White: seams are more visible in all formats except in Roll



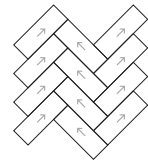
Chroma Bronze + Dark Slate + Golden Beach 



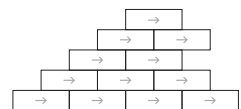
75 cm / 29.52 in

25 cm / 9.84 in

Ready for FITNICE® Composer



Canvas 1



Canvas 2

Plank

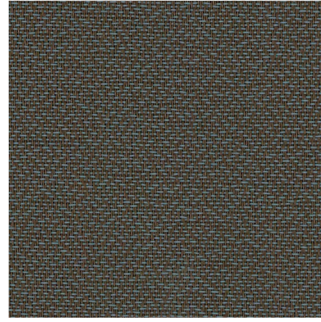
Memphis



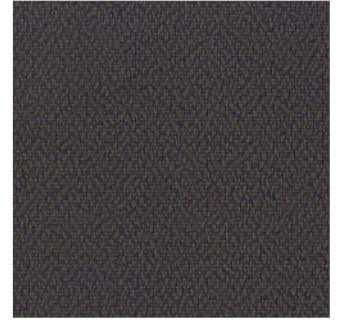
Night*



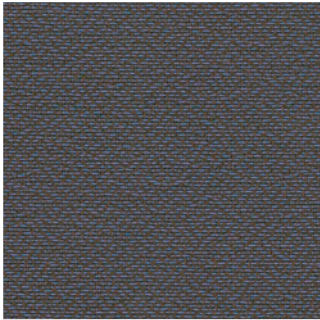
Metalic Bronze*



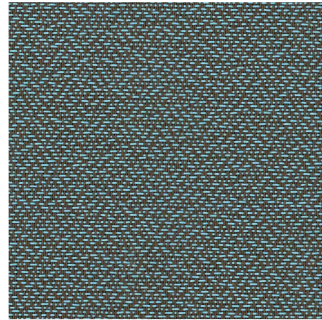
Grey*



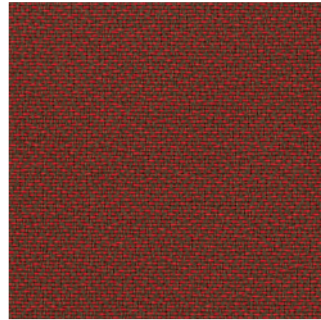
Blue*



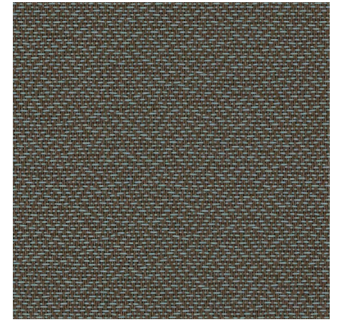
Steel Blue*



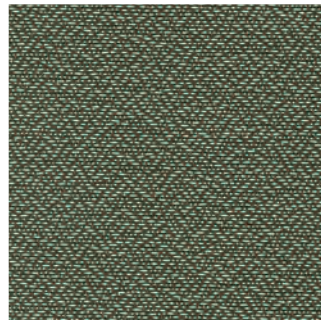
Sky Blue*



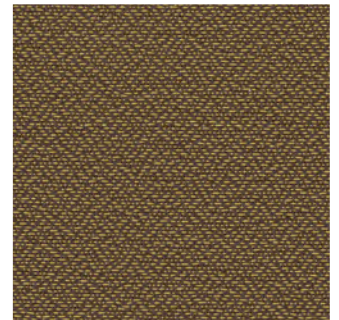
Carmine*



Pewter*



Pistacho*







Orange*




Custard*

All colours are available in:

-  Roll
-  Square Tile
-  Diamond Tile
-  Plank Tile

Square Tiles and Plank Tile are also available
in Raised Access Floor Tiles

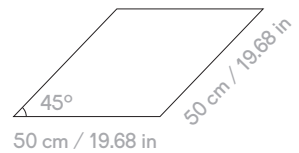
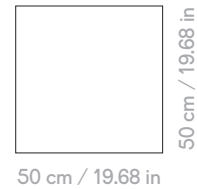
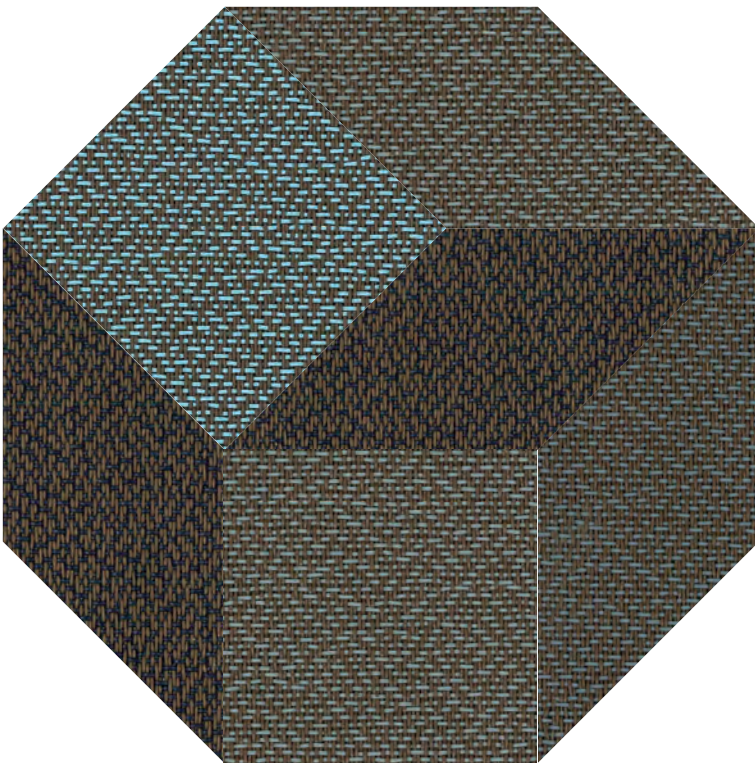


* In Roll format, all seams are more visible in all colours 

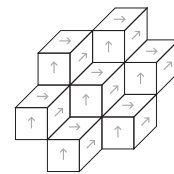
Atelier Fitnice®



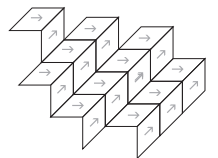
Memphis Night + Pewter + Sky Blue + Grey □ ◇



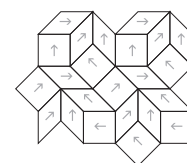
Ready for FITNICE® Composer



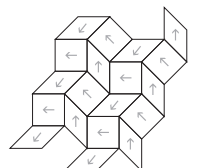
Canvas 1



Canvas 3



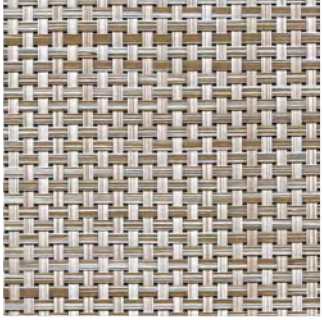
Canvas 2



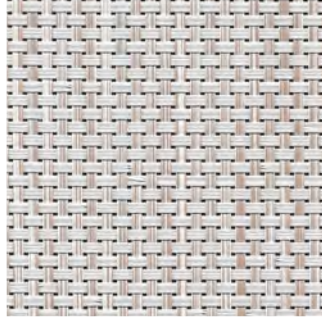
Canvas 4

Square and Diamond

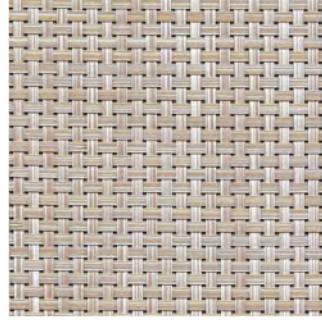
Wicker



Tan*



Climb*



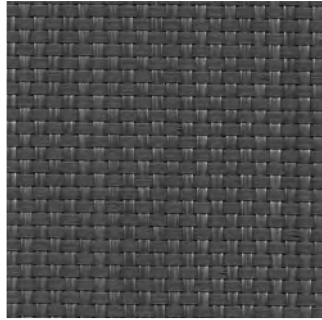
Calm*



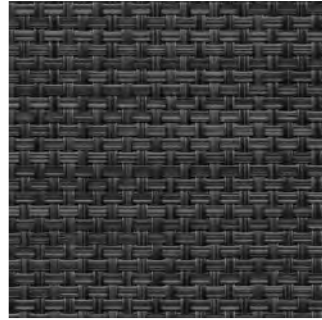
Wait*



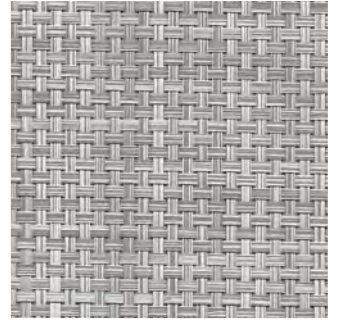
Tread



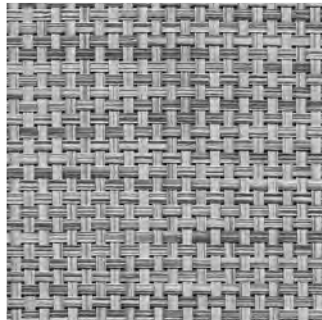
Listen



Run



Think*



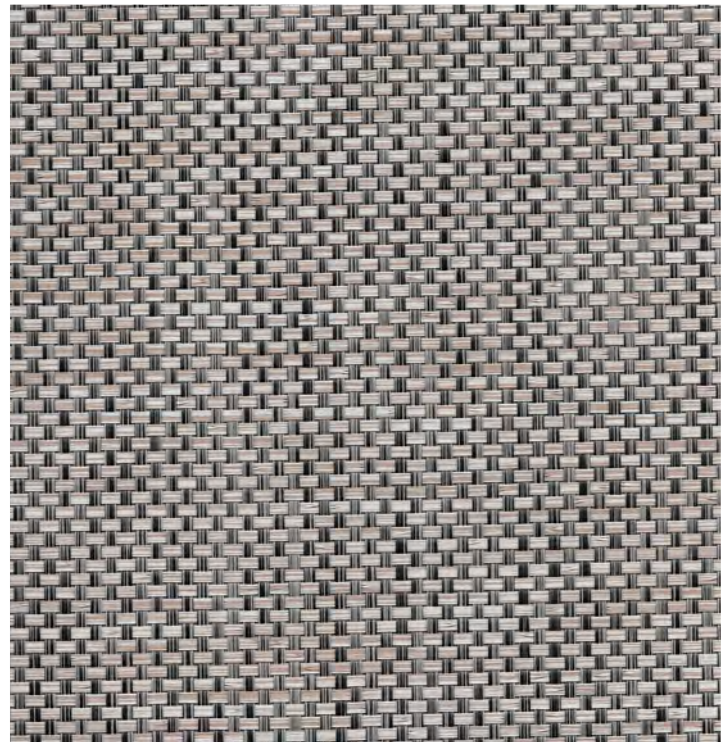
Float



Fun







Dive








Jump

All colours are available in:

-  Roll
-  Square Tile
-  Diamond Tile
-  Plank Tile

Square Tiles and Plank Tile are also available in Raised Access Floor Tiles

 * Seams are more visible in all formats    



Roll

Wicker Float 

ROLLS & TILES

Technical specifications Características técnicas	Standard Norma	Panama	Chroma	Memphis	Wicker
Composition / Composición	-	75% Vinyl + 25% polyester + backing 100% vinyl	91% Vinyl + 9% polyester + backing 100% vinyl	75% Vinyl + 25% polyester + backing 100% vinyl	87% Vinyl + 13% polyester + backing 100% vinyl
Weight / Peso (g/m ²) (oz/sq ft)	ISO 8543:1998	2900 g/m ² +13% / -10 % 9.5 oz/sq ft +13% / -10 %	3500 g/m ² +13% / -10 % 10.7 oz/sq ft +13% / -10 %	3100 g/m ² +13% / -10 % 10.2 oz/sq ft +13% / -10 %	3500g/m ² +13% / -10% 10.8 oz/sq ft +13% / -10%
Weight / Peso (g/m ²) (oz/sq ft) Raised Access Floor Tiles / Losetas autoportantes	ISO 1765:1986	4500 g/m ² +13% / -10 % 13.0 oz/sq ft +13% / -10 %	4275 g/m ² +13% / -10 % 14.0 oz/sq ft +13% / -10 %	4300 g/m ² +13% / -10 % 14.1 oz/sq ft +13% / -10 %	4275 g/m ² +13% / -10 % 14.0 oz/sq ft +13% / -10 %
Thickness / Espesor (mm.) (in)		2.25 mm 0.09 in	2.70 mm 0.11 in	2.30 mm 0.09 in	2.60 mm 0.10 in
Thickness / Espesor (mm.) (in) Raised Access Floor Tiles / Losetas autoportantes		2.90 mm 0.11 in	3.35 mm 0.13 in	3.00 mm 0.12 in	3.30 mm 0.13 in
Light Fastness / Solidez a la luz (Grey scale/ Escala de grises :1-5)	EN ISO 4892:2006 (exterior)	5/5 White/Blanco 4/5	5/5 White 4/5	5/5 White 4/5	5/5 White 4/5
Light Fastness / Solidez a la luz (Blue scale/ Escala de azules :1-8)	EN ISO 105B02:2001 (interior)	8/8 White/Blanco 7/8	8/8 White/Blanco 7/8	8/8 White/Blanco 7/8	8/8 White/Blanco 7/8
Dimensional Stability % Estabilidad dimensional %	EN ISO 23999:2012	≤0.25%	≤0.25%	≤0.25%	≤0.25%
Residual Indentation Huella residual	EN ISO 24343-1:2012	<0.10 mm <0.003 in	<0.30 mm <0.011 in	<0.10 mm <0.003 in	<0.10 mm <0.003 in
Castor Chair Test Ensayo silla con ruedas.	EN 985:2002	Intensive use Uso intenso	Intensive use Uso intenso	Intensive use Uso intenso	Intensive use Uso intenso
Sound Insulation / Aislamiento acústico	EN ISO 10140-3:2011	13 dB	14 dB	12 dB	14 dB
Sound Insulation / Aislamiento acústico Raised Access Floor Tiles / Losetas autoportantes		14 dB	15 dB	13 dB	15 dB
Thermal Resistance Resistencia térmica	EN 12667:2001	<0.15 m ² K/W	<0.15 m ² K/W	<0.15 m ² K/W	<0.15 m ² K/W
Static Electricity Electricidad Estática	EN 1815:1997	<2 kV	<2 kV	<2 kV	<2 kV
Slip Resistance Resistencia al deslizamiento	EN 13893:2003	>0.4	>0.4	>0.35	>0.4
Slip Resistance Resistencia al deslizamiento	DIN 51130:2014	R10	R9	R10	R9
Fire Classification Clasificación de fuego	EN 13501-1:2007	BfS1	BfS1	BfS1	BfS1
Fire Classification Clasificación de fuego	ASTM D2859 (2011)	Pass	Pass	Pass	Pass
Smoke density / Densidad de humos	ASTM E662-09	Pass	Pass	Pass	Pass
Volatiles emission Emisiones volátiles	Floorscore core	Floorscore Certified	Floorscore Certified	Floorscore Certified	Floorscore Certified
Antibacterial activity Comportamiento antibacteriano	ASTM E 2180-07 (2012) ASTM G21:2013	Inhibition of bacterial growth Inhibe crecimiento bacterias Antifungal activity Actividad antifúngica	Inhibition of bacterial growth Inhibe crecimiento bacterias Antifungal activity Actividad antifúngica	Inhibition of bacterial growth Inhibe crecimiento bacterias Antifungal activity Actividad antifúngica	Inhibition of bacterial growth Inhibe crecimiento bacterias Antifungal activity Actividad antifúngica
Roll Width / Ancho del rollo	-	200 cm 78.740 in	200 cm 78.740 in	200 cm 78.740 in	200 cm 78.740 in
Roll Length / Largo del rollo	-	10 lm 32.81 ft 20 lm 65.62 ft	10 lm 32.81 ft 20 lm 65.62 ft	10 lm 32.81 ft 20 lm 65.62 ft	10 lm 32.81 ft 20 lm 65.62 ft
CE classification / Clasificación CE	EN 14041:2004	0338-C PR-2002	0338-CP R-2002	0338-CP R-2002	0338-CP R-2002
Use classification / Clasificación de uso	EN 1307:2014	Heavy Commercial / Uso comercial de alto tráfico			



Tile Dimensions Dimensiones	Square	Plank	Diamond	Hexagon	E.Triangle	I.Triangle
Square diagram showing side length 'a'.	a = 50cm / 19 ^{11/16} in	Plank diagram showing length 'a' and width 'b'.	Diamond diagram showing side length 'a' and width 'b'.	Hexagon diagram showing side length 'a', width 'b', and length 'L'.	E.Triangle diagram showing side length 'a'.	I.Triangle diagram showing side length 'a' and height 'z'.
		a = 75cm / 29 ^{1/2} in b = 25cm / 9 ^{13/16} in	a = 50cm / 19 ^{11/16} in b = 50cm / 19 ^{11/16} in	a = 54cm / 21 ^{1/4} in b = 61.4cm / 24 ^{3/16} in L = 30.7cm / 12 ^{1/16} in	a = 50cm / 19 ^{11/16} in	a = 50cm / 19 ^{11/16} in Z = 70.7cm / 27 ^{13/16} in

All specifications are based on average values and may deviate. The values are for guidance and are not contractual. Subject to technical modifications. The straight weft is not an inherent condition. Weaving technology features colour effects because of light, making it an exclusive and unique product. Also bicolour yarns create a randomly harmonious effect. These effects are no ground for claims.

Todas las especificaciones están basadas en promedios y pueden variar. Los valores son una guía y no son contractuales. Están sujetas a modificaciones técnicas. La trama recta no es una condición inherente. La forma en que está tejido provoca efectos de color a causa de la luz, convirtiéndolo en un producto único y exclusivo. Los tejidos bicolor crean un efecto armónico aleatorio. Estos efectos no son motivo de reclamación.

estos a modificaciones técnicas.
éndolo en un producto único y exclusivo. Los tejidos

vertisol
contemporary weavers

C. 17 Km. 18,920 · 08403 Granollers (Barcelona), Spain
T. (+34) 93 840 14 44 · F. (+34) 93 849 72 19

fitnice® is a registered trademark of Vertisol Internacional SRL.

HunterDouglas
Architectural

Autopista Medellín KM 6+200 costador sur, entrando 400 m.
T. (+57) (1) 432 1009
contactoarchitectural@hdlao.com