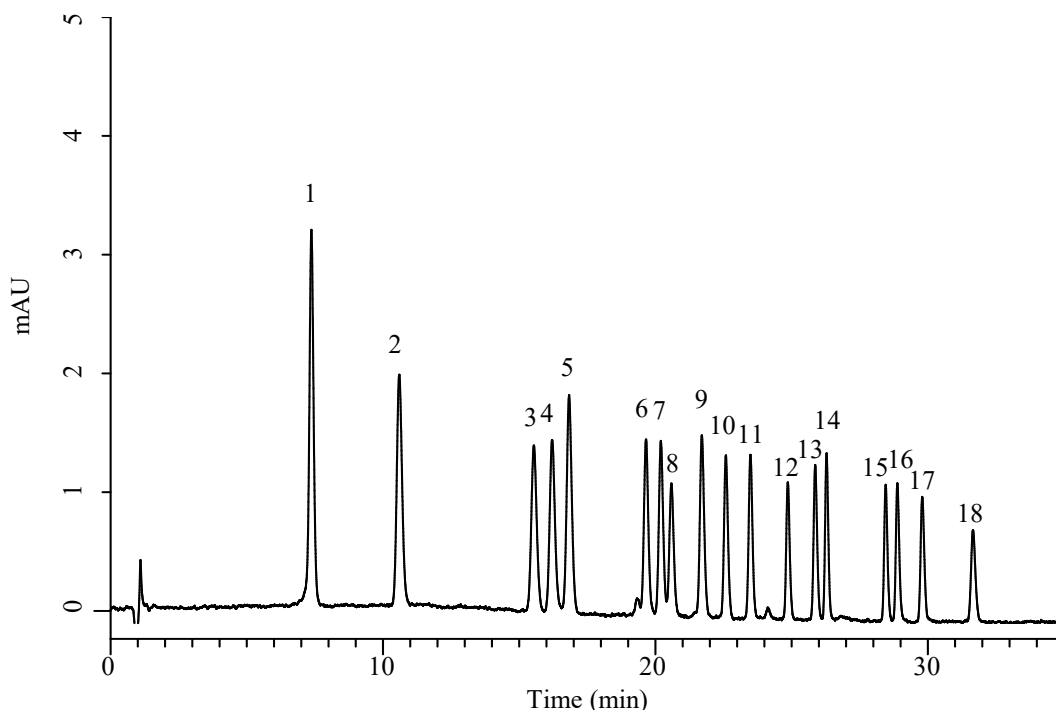


InertSearch for LC

Inertsil Applications

Analysis of 18 kinds of Aldehydes (Detected by Pre-Column Method with DNPH)

Data No. LB743-1087



Conditions

System : Primaide HPLC system (HITACHI)
Column : InertSustain C30 (GL Sciences Inc.)
(HP 3 μ m, 150 x 4.6 mm I.D.)
Column Cat. No. : 5020-17184
Eluent : A) CH₃CN
B) H₂O

Time (min)	A (vol%)	B (vol%)
0.0	50	50
10.0	50	50
20.0	70	30
25.0	85	15
35.0	85	15

Flow Rate : 1.0 mL/min
Col. Temp. : 20 °C
Detection : UV 360 nm
Injection Vol. : 10 μ L
Sample : Standard

Analyte:

1. DNPH-Formaldehyde
2. DNPH-Acetaldehyde
3. DNPH-Acetone
4. DNPH-Propionaldehyde
5. DNPH-Acrolein
6. DNPH-Isobutyraldehyde
7. DNPH-*n*-Butyraldehyde
8. DNPH-Methylethylketone (MEK)
9. DNPH-Crotonaldehyde
10. DNPH-Isovaleraldehyde
11. DNPH-*n*-Valeraldehyde
12. DNPH-4-Methyl-2-pentanone (MIBK)
13. DNPH-Benzaldehyde
14. DNPH-*n*-Hexanal
15. DNPH-*o*-Tolualdehyde
16. DNPH-*m*-Tolualdehyde
17. DNPH-*p*-Tolualdehyde
18. DNPH-2,5-Dimethylbenzaldehyde

(100 μ g/L each)