



# **3** MOBILE EQUIPMENT MAINTENANCE SOLUTIONS



**PERTH**  
(08) 9459 8600  
**KALGOORLIE**  
(08) 9021 8300

**ADELAIDE**  
(08) 8231 1513  
**NEWMAN**  
(08) 9175 1164

**DARWIN**  
(08) 8963 5621  
**MT ISA**  
(07) 4743 6458

✉ [sales@bendtechgroup.com.au](mailto:sales@bendtechgroup.com.au)  
🌐 [bendtechgroup.com.au](http://bendtechgroup.com.au)

2-10 Kewdale Road, Welshpool WA 6106



**MOBILE EQUIPMENT MAINTENANCE SOLUTIONS****INDEX**

<b>ABOUT BEND-TECH</b>	<b>/// 4</b>
<b>BUCKET REPAIR</b>	<b>/// 5 - 7</b>
<b>HAUL TRUCK WHEEL MAINTENANCE PLATFORMS</b>	<b>/// 8 - 9</b>
<b>CATERPILLAR D10-D11</b>	<b>/// 11 - 17</b>
<b>CATERPILLAR 16M GRADER AND 24M GRADER</b>	<b>/// 19 - 21</b>
<b>CATERPILLAR 777 HAUL TRUCK</b>	<b>/// 23 - 25</b>
<b>CATERPILLAR 785D HAUL TRUCK</b>	<b>/// 26 - 27</b>
<b>CATERPILLAR 789 TRUCK</b>	<b>/// 28 - 29</b>
<b>CATERPILLAR 793 TRUCK</b>	<b>/// 31 - 40</b>
<b>CATERPILLAR 854K, 966 AND 980</b>	<b>/// 41 - 42</b>
<b>CATERPILLAR 992K, 993K WHEEL LOADER</b>	<b>/// 43 - 45</b>
<b>CATERPILLAR 994H WHEEL LOADER</b>	<b>/// 47 - 51</b>
<b>CATERPILLAR 7495 ROPE SHOVEL</b>	<b>/// 52</b>



**MOBILE EQUIPMENT MAINTENANCE SOLUTIONS****INDEX**

<b>CATERPILLAR MT4400 PLATFORMS</b>	<b>/// 53</b>
<b>HITACHI EX1900 TRAVEL MOTOR COVERS &amp; FENDERS</b>	<b>/// 55 - 57</b>
<b>HITACHI EX2500 EXCAVATOR</b>	<b>/// 58</b>
<b>HITACHI EX3600 PLATFORMS, TOOLING, TRAVEL MOTOR COVERS &amp; FENDERS</b>	<b>/// 59 - 63</b>
<b>HITACHI EX5500/EX5600 PLATFORMS, MAINTENANCE, TRAVEL MOTOR COVERS &amp; FENDERS</b>	<b>/// 64 - 69</b>
<b>HITACHI 5000EH TRUCK</b>	<b>/// 70</b>
<b>HITACHI EX8000 TRAVEL MOTOR COVERS &amp; FENDERS</b>	<b>/// 71</b>
<b>EPIROC / ATLAS D65 SURFACE DRILL</b>	<b>/// 73</b>
<b>EPIROC / ATLAS PV-271 BLASTHOLE DRILL</b>	<b>/// 74</b>
<b>KOMATSU 475A PLATFORMS</b>	<b>/// 76</b>
<b>KOMATSU 730E PLATFORMS AND TOOLING</b>	<b>/// 77 - 80</b>

**MOBILE EQUIPMENT MAINTENANCE SOLUTIONS****INDEX**

<b>KOMATSU 830E PLATFORMS, MAINTENANCE AND STANDS</b>	<b>/// 81 - 88</b>
<b>KOMATSU 930E PLATFORMS, HANDRAILS AND MAINTENANCE</b>	<b>/// 89 - 92</b>
<b>KOMATSU WA900</b>	<b>/// 93</b>
<b>KOMATSU WA1200 PLATFORMS, TOOLING AND STANDS</b>	<b>/// 94 - 98</b>
<b>KOMATSU PC4000 / PC5500 EXCAVATOR</b>	<b>/// 99 - 100</b>
<b>LETOURNEAU L1850 WHEEL LOADER</b>	<b>/// 102 - 103</b>
<b>LETOURNEAU L2350 PLATFORMS AND STANDS</b>	<b>/// 104 - 106</b>
<b>LIEBHERR 996 LIEBHERR 9400</b>	<b>/// 108 - 111</b>
<b>VOLVO L120F WHEEL LOADER</b>	<b>/// 112</b>
<b>TEREX MT4400 DUMP TRUCK</b>	<b>/// 113</b>
<b>CDEC</b>	<b>/// 114</b>



## MOBILE EQUIPMENT MAINTENANCE SOLUTIONS ABOUT BEND-TECH

We deliver sustained value by providing cutting edge solutions through collaboration and innovation. For more than 30 years we have delivered intelligent design and customcertified products and services to the Mining, and Mobile Equipment sectors across Australia and around the world.

We have achieved this through a deep understanding of our customers and their requirements as well as innovative and industry leading design, engineering and construction. Our platforms, stands, tooling, components and lifting and handling equipment is designed to make maintenance on your mobile equipment safe, efficient and easy.

“ **MAKING MAINTENANCE  
ON-SITE SAFE, EFFICIENT  
AND EASY** ”

## BUCKET SUPPORT STANDS



Bend-tech's heavy duty Bucket Support Stands can be used as single or pairs for loads up to 200 tonne. Our Bucket Support Stands also include forklift lifting slots for ease of transport.



**200T - 300MM (H)**  
Part No. 5000000



**200T - 600MM (H)**  
Part No. 5000001



**200T - 900MM (H)**  
Part No. 5000002

Bend-tech's heavy duty Bucket Support Stands can be used in single or pair applications for loads up to 200 tonne. Our stands come in sizes 300mm high, 600mm high and 900mm high with a top load plate of 830mm x 1160mm. Our Bucket Support Stands also include forklift lifting slots for ease of transport.

### CONSTRUCTION

- Heavy-duty steel
- WLL: 200 Tonne
- Fully engineered and certified
- Can be painted in accordance with the owner's specification



## BUCKET REPAIR PLATFORMS



### FACE SHOVEL BUCKET REPAIR PLATFORM 1300MM Part No. 5401529

Our High Face Shovel Bucket Repair platform is used for the refurbishment and repair of buckets, and enables 3 sided access to large mining excavator and face shovel buckets in 180 to 400 tonne machine capacity range.

#### CONSTRUCTION

- Heavy-duty
- WLL: 250kg
- Walking pathway
- Self-closing gate
- Safety handrails
- Non-slip stairway and work area
- Platforms are provided in 3 stage modular form to enable ease of transport, storage and installation.

“ Platforms can be customised to meet your specific needs and are engineered and certified to Australian Standards. ”



### FACE SHOVEL BUCKET REPAIR PLATFORM 2300MM Part No. 5401522

## BUCKET REPAIR PLATFORMS



### BUCKET REPAIR AND INSPECTION PLATFORM Part No. 5401111

Our Bucket Repair and Inspection Platform provides safe access and inspection for large mining excavator and face shovel buckets.

#### CONSTRUCTION

- Heavy-duty
- WLL: 500kg
- 7 step pathway
- Closing bar gate
- Safety handrails
- Non-slip stairway and work area
- Forklift slots for ease of transport
- Manufactured from Heavy duty steel

“ **MAKING MAINTENANCE  
ON-SITE SAFE, EFFICIENT  
AND EASY** ”



## HAUL TRUCK WHEEL MAINTENANCE PLATFORMS

### HAUL TRUCK WHEEL SERVICE PLATFORM

Part No. 5401579

Our platform provides a safe, certified and convenient solution to the access and rebuild haul truck wheels. Certified and compliant with Australian Standards.

#### CONSTRUCTION

- Heavy-duty aluminium
- Self closing gate
- Removable handrails
- Non-slip stairway and work area
- Work bench on both ends for tool storage
- Adjustable jacking stands for uneven ground
- Monorail available as a manual handling upgrade



### CATERPILLAR 793C MONORAIL FOR WHEEL SERVICE PLATFORM - EXTENDED

Part No. 5504181

A rear wheel service platform designed and engineered to provide safe maintenance and reduce manual handling. Certified and compliant with Australian Standards. Extends past the edge of the platform so operators can lower packages down to the floor.

#### CONSTRUCTION

- Heavy-duty aluminium
- WLL: 200kg
- Certified and compliant with Australian Standards



## HAUL TRUCK WHEEL MAINTENANCE PLATFORMS



### HAUL TRUCK WHEEL SERVICE PLATFORM Part No. 5503423

Our platform provides a safe, certified and convenient solution to the access and rebuild haul truck wheels. Certified and compliant with Australian Standards.

#### CONSTRUCTION

- Heavy-duty aluminium
- Self closing gate
- Removable handrails
- Heavy-duty aluminium
- Non-slip stairway and work area
- Work bench on both ends for tool storage
- Adjustable jacking stands for uneven ground
- Monorail available as a manual handling upgrade





# CATERPILLAR MACHINE RANGE

# CATERPILLAR D10 / D11 DOZER

## CATERPILLAR D10/D11 REAR ACCESS PLATFORM

Part No. 5502296

Designed and engineered for the ripper and rear access of the D10 and D11 dozers. Certified and compliant with Australian Standards.

### CONSTRUCTION

- Heavy-duty aluminium
- WLL: 250kg
- Self-closing gates
- Non-slip stairway and work area
- Separated into 4 sections for easy transport



## CATERPILLAR D10/D11 ENGINE BAY PLATFORM

Part No. 5501737

A safe, certified and compliant access platform designed and engineered to access the engine bay on the CAT D10 and D11 Dozer for easy servicing. Does not fit D10T-2.

### CONSTRUCTION

- Heavy-duty aluminium
- WLL: 250kg
- Height: 1850mm
- Non-slip stairway and work area
- Handrails fully removable
- Jacking stands
- LH and RH configurations (Sold as a set)
- Detachable handrail with swinging gate section for protection when in the engine bay





## CATERPILLAR D10 / D11 DOZER

### CATERPILLAR D10 ENGINE ACCESS PLATFORM LEFT HAND

Part No. 5501643

#### CONSTRUCTION

- Heavy-duty aluminium
- WLL: 250kg
- Width: 950mm
- Height: 1950mm
- Length: 4067mm
- Available in LH and RH configuration
- Non-slip stairway and work area
- Double self closing gate
- Safety handrails
- Fitted with jacking stands
- Forklift slots for easy mobility



### CATERPILLAR D10T SIDE ENGINE ACCESS PLATFORM

Part No. 5502808

#### CONSTRUCTION

- Heavy-duty aluminium
- WLL: 200kg
- Height: 1200mm
- Width: 1550mm
- Non-slip stairway and work area
- Self-closing gates
- Fitted with large industrial castors
- Interchangeable side handrails



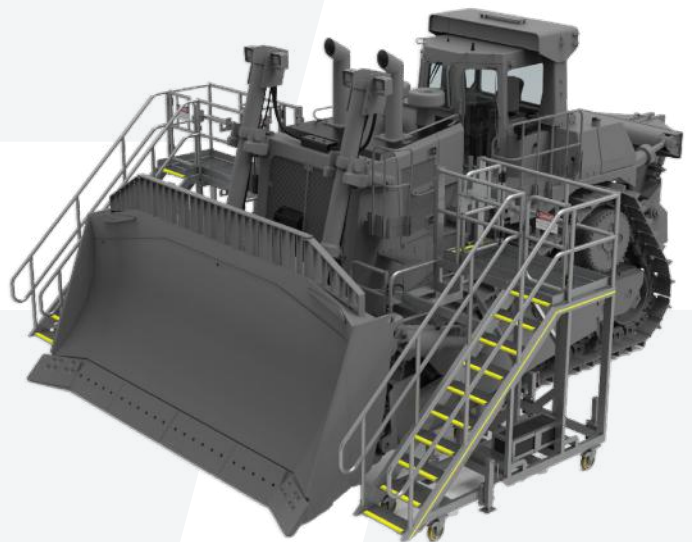
## CATERPILLAR D10 / D11 DOZER

### CATERPILLAR D10T2 ENGINE BAY ACCESS PLATFORM SET

Part No. 5506401

#### CONSTRUCTION

- Heavy-duty aluminium
- WLL: 250kg
- Fitted with jacking stands
- Detachable handrail with swinging gate section for protection when in the engine bay
- Left and right-hand configurations (Sold as a set)



### CATERPILLAR D10/D11 TRACK HANDRAIL

Part No. 5501429

#### CONSTRUCTION

- Heavy-duty aluminium
- Certified and compliant with Australian Standards
- Fully adjustable



## CATERPILLAR D10 / D11 DOZER

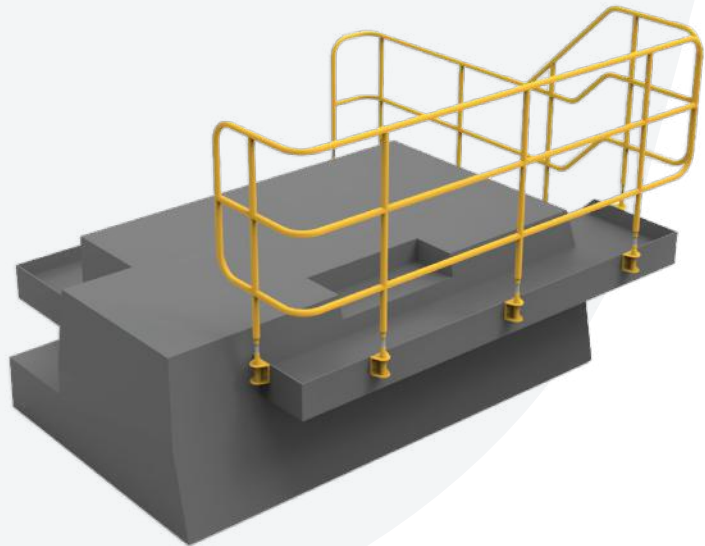
### CATERPILLAR D10T REAR HANDRAILS

Part No. 5504834

#### CONSTRUCTION

- Heavy-duty steel
- Cost saving over OEM
- Improved design over OEM
- Shock absorbing mounts

A comprehensive set of handrails designed and engineered to provide fall protection on the rear of the Caterpillar D10T dozer.



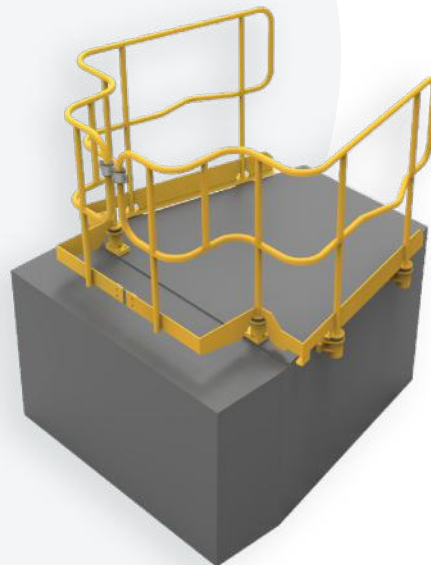
### CATERPILLAR D10T BONNET HANDRAILS

Part No. 5504947

#### CONSTRUCTION

- Heavy-duty steel
- Shock absorbing mounts

A comprehensive set of handrails designed and engineered to provide fall protection on the rear of the Caterpillar D10T dozer.





## CATERPILLAR D10 / D11 DOZER

### CATERPILLAR D11 DOZER LADDER EXTENSION Part No. 5501057

#### CONSTRUCTION

- Lightweight aluminium
- WLL: 150kg
- Height: 700mm
- Certified and compliant with Australian Standards



### CATERPILLAR D11T CHASSIS HANDRAILS Part No. 5502252

#### CONSTRUCTION

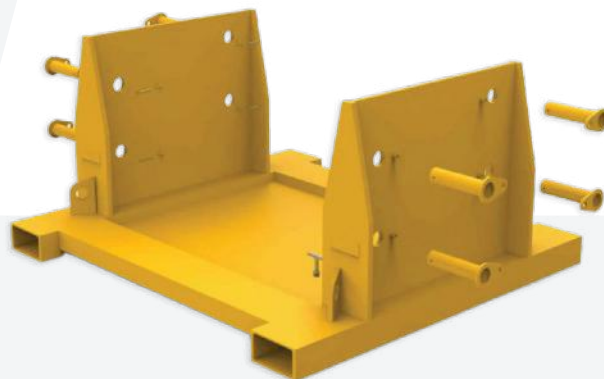
- Heavy-duty aluminium
- Height: 1800mm
- Clamps to chassis with hand bolts
- Powder coated in Y-14 safety yellow



### CATERPILLAR D10 DOZER NOSE CONE STAND Part No. 5502421

#### CONSTRUCTION

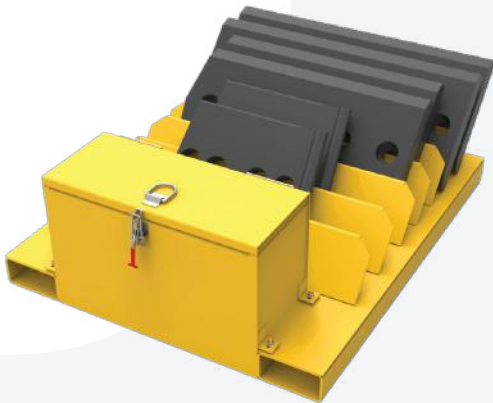
- Heavy-duty steel
- WLL: 4 Tonne
- Certified and compliant with Australian Standards
- Finished in Y14 safety yellow



## CATERPILLAR D10 / D11 DOZER

### CATERPILLAR D10/D11 GET JIG

Part No. 5503287

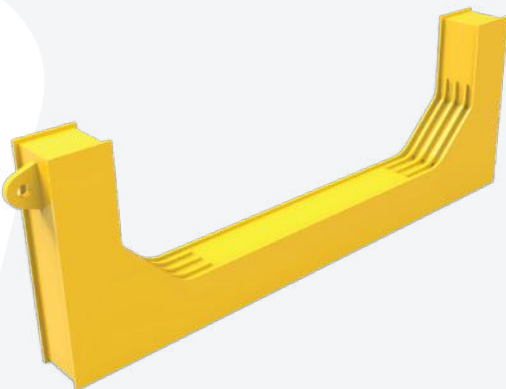


#### CONSTRUCTION

- Heavy-duty steel
- Height: 1800mm
- Certified and compliant with Australian Standards
- Fitted with lockable toolbox

### CATERPILLAR D10/D11 DOZER TRACK LIFTING FRAME 13 TONNE

Part No. 5410131



#### CONSTRUCTION

- Heavy-duty steel
- WLL: 13 Tonne
- Certified and compliant with Australian Standards
- Fitted with lifting lugs

### CATERPILLAR D10/D11 RIPPER TYNE HOLDER

Part No. 5502503



#### CONSTRUCTION

- Heavy-duty steel
- Height: 1800mm
- Certified and compliant with Australian Standards
- In-ground ripper storage
- Fitted with lock

### CATERPILLAR D10 LOAD ROLLER INSTALL AND REMOVAL TOOL

Part No. 5501119



#### CONSTRUCTION

- Heavy-duty steel
- WLL: 140kg
- Heavy duty rubber wheels
- Rubber handgrips

# CATERPILLAR D10 / D11 DOZER

## CATERPILLAR D10/11 DRAFT ARM SAFETY STAND 45 TONNE Part No. 5501587



### CONSTRUCTION

- Heavy-duty steel
- WLL: 45 Tonne
- Height: 1040mm
- Adjustable spring loaded heavy duty wheels
- Spring loaded

## CATERPILLAR D10/D11 UNDERCARRIAGE KIT TOOL BOX Part No. 5602017



### CONSTRUCTION

- Heavy-duty steel
- Height: 822mm
- Gas struts for lid
- Heavy-duty foam cut out
- Drawer with heavy-duty sliders

## CATERPILLAR D10/D11 DOZER FIRE SUPPRESSION PLATFORMS Part No. 5501054



### CONSTRUCTION

- Heavy-duty steel
- WLL: 450kg each
- Certified and compliant with Australian Standards
- Overengineered to account for vibration while in use

## CATERPILLAR D10 RIPPER INFILL PLATFORM Part No. 5504311



### CONSTRUCTION

- Heavy-duty steel
- WLL: 150kg
- Height: 50mm
- Drop-down lifting handle
- Non-slip, serrated grafting deck





# CATERPILLAR 16M AND 24M GRADER

# CATERPILLAR 16M GRADER

## CATERPILLAR 16M GRADER ACCESS PLATFORM

Part No. 5401519

### CONSTRUCTION

- Heavy-duty aluminium
- WLL: 250kg
- Height: 1810mm
- Length: 1728mm
- Width: 1080mm
- Non-slip stairway and work area
- Double self-closing gate
- Safety handrails
- Wheel locks



## CATERPILLAR 16M GRADER CABIN ACCESS PLATFORM

Part No. 5401590

### CONSTRUCTION

- Heavy-duty aluminium
- WLL: 250kg
- Height: 1800mm
- Non-slip stairway and work area
- Jacking stands fitted on the outriggers
- Double self-closing gates
- Safety handrails
- Fork pockets for easy mobility
- Overhang and counterweight for easy access



## CATERPILLAR 16M GRADER

### CATERPILLAR 16M ENGINE BAY ACCESS PLATFORM

Part No. 5501593

#### CONSTRUCTION

- Heavy-duty aluminium
- WLL: 250kg
- Height: 1750mm
- Fitted with heavy-duty castors
- Fitted with jacking stands
- LH and RH sold as a set



### CATERPILLAR 16M GRADER ENGINE STAND

Part No. 5502422



#### CONSTRUCTION

- Heavy-duty steel
- Height: 822mm
- Finished in Y14 safety yellow
- Fitted with forklift pockets for easy mobility

### CATERPILLAR 16M GRADER SUPPORT STAND

Part No. 5502889



#### CONSTRUCTION

- Heavy-duty steel
- WLL: 45 Tonne
- Height: 710mm
- Fitted with forklift slots
- Finished in Y-14 safety yellow



## CATERPILLAR 24M GRADER

### CATERPILLAR 24M GRADER EMERGENCY ACCESS LADDER

Part No. 5502411

#### CONSTRUCTION

- Heavy-duty aluminium
- WLL: 150kg
- Gas struts for controlled release and easy lifting
- Easy-to-use latching system
- Fully TIG welded ladder construction
- Steel section finished in Y-14 safety yellow
- Non-slip nosings on ladder treads



“ **MAKING MAINTENANCE  
ON-SITE SAFE, EFFICIENT  
AND EASY** ”



# CATERPILLAR 777 HAUL TRUCKS

## CATERPILLAR 777 HAUL TRUCK'S

### CATERPILLAR 777 CHASSIS ACCESS PLATFORM

Part No. 5502617

#### CONSTRUCTION

- Heavy-duty aluminium
- WLL: 300kg
- Height: 2730mm
- Non-slip stairway and work area
- Self-closing gate
- Safety handrails



### CATERPILLAR 777-789F AIR FILTER ACCESS PLATFORM

Part No. 5501024

#### CONSTRUCTION

- Heavy-duty aluminium
- WLL: 250kg
- Height: 2400mm
- Non-slip stairway and work area
- Self-levelling jacks
- Self-closing gate
- Safety handrails





## CATERPILLAR 777 HAUL TRUCK'S

### CATERPILLAR 777F WATER CART ACCESS PLATFORMS

Part No. 5501726

#### CONSTRUCTION

- Heavy-duty aluminium
- Height: 2450mm
- Length: 3590mm
- Width: 2800mm
- Certified and compliant with Australian Standards
- Can be customised to suit other mobile equipment
- Available in RH and LH configuration
- Non-slip walkway
- Self-closing gates



### CATERPILLAR 777F WATER CART ACCESS PLATFORM

Part No. 5501050

#### CONSTRUCTION

- Heavy-duty aluminium
- WLL: 250kg
- Height: 2230mm
- Non-slip stairway and work area
- Self-levelling jacks
- Self-closing gate
- Safety handrails



# CATERPILLAR 777 HAUL TRUCK'S

## CATERPILLAR 777F FRONT ACCESS PLATFORM

Part No. 5500139

### CONSTRUCTION

- Heavy-duty steel
- WLL: 250kg
- Height: 2400mm
- Safety handrails
- Small Platform section at bottom and larger section at top
- This item can be customised to meet your specific needs and is engineered, certified and built to Australian Standards



## CATERPILLAR 777 EMERGENCY EGRESS LADDER

Part No. 5502447



### CONSTRUCTION

- Various
- High strength aluminium ladder and slides
- Heavy duty steel main frame
- Torqued gear units for controlled release and easy lifting\*Patent pending

## CATERPILLAR 777F WATERCART CHASSIS HANDRAIL KIT

Part No. 5503417



### CONSTRUCTION

- Various
- Height: 1050mm
- Length: 2930mm
- Lightweight for easy install
- Fitted with heavy-duty fixings to lock to the chassis

**CATERPILLAR**

# 785D HAUL TRUCK



An engineered and certified stand and platform solution designed to provide safe access to the air filter on the Caterpillar 785 Water Cart.

## CONSTRUCTION

- Heavy-duty steel
- WLL: Platform = 150kg  
Stand = 35T
- Height: 1260mm
- Width: 2428mm
- Non-slip stairway and work area
- Fitted with lifting lugs



## CATERPILLAR 785 WATER CART CHASSIS STAND AND PLATFORM

Part No. 5502815



# CATERPILLAR 785 HAUL TRUCK

## CATERPILLAR 785 ENGINE STAND

Part No. 5502933



### CONSTRUCTION

- Heavy-duty steel
- WLL: 10 Tonne
- Fitted with lifting eyes
- Finished in Y-14 safety yellow

## CATERPILLAR 785 RADIATOR STAND

Part No. 5502947



### CONSTRUCTION

- Heavy-duty steel
- WLL: 750kg
- Height: 1670mm
- Length: 2400mm
- Fitted with lifting eyes

## CATERPILLAR 789 HAUL TRUCK

### CATERPILLAR 777-789F AIR FILTER ACCESS PLATFORM

Part No. 5501024

#### CONSTRUCTION

- Heavy-duty aluminium
- WLL: 250kg
- Height: 2400mm
- Non-slip stairway and work area
- Self-levelling jacks
- Self-closing gate
- Safety handrails



### CATERPILLAR 789 AIR FILTER ACCESS PLATFORM

Part No. 5503385

#### CONSTRUCTION

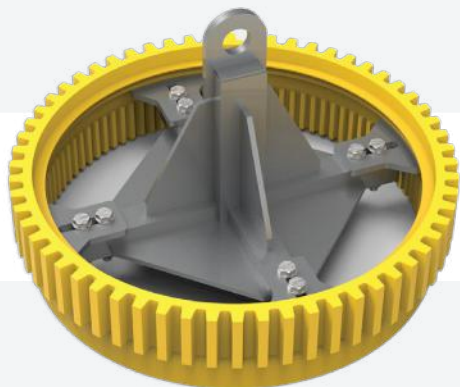
- Heavy-duty aluminium
- WLL: 350kg
- Length: 2480mm
- Width: 1600mm
- Height: 3000mm
- Non-slip stairway and work area
- Self-leveling jacks
- Self-closing gate
- Removable handrails



# CATERPILLAR 789 HAUL TRUCK

## GEAR LIFTER FOR CAT 789C

Part No. 5501675



### CONSTRUCTION

- Heavy-duty aluminium
- Certified and compliant with Australian Standards
- Adjustable locking plates
- Can be customised to suit other mobile equipment

## CATERPILLAR 789C TRUCK A FRAME SOCKET WRENCH

Part No. 5502210



### CONSTRUCTION

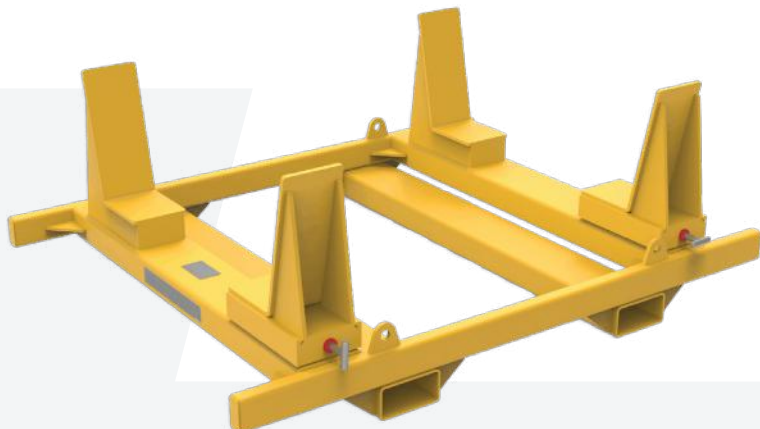
- Heavy-duty steel
- WLL: 525Nm
- Removal and install of A-frame bolts

## CATERPILLAR 789C FUEL TANK STAND

Part No. 5502823

### CONSTRUCTION

- Heavy-duty steel
- WLL: 2 Tonne
- Length: 1910mm
- Width: 1500mm
- Fitted with lifting eyes
- Adjustable support blocks
- Finished in Y-14 safety yellow







# CATERPILLAR 793 HAUL TRUCK

# CATERPILLAR 793 HAUL TRUCK

## CATERPILLAR 793C MONORAIL FOR WHEEL SERVICE PLATFORM - EXTENDED

Part No. 5504181

### CONSTRUCTION

- Heavy-duty aluminium
- WLL: 200kg
- Length: 3200mm
- Certified and compliant with Australian Standards

Wheel service platform designed and engineered to provide safe maintenance and reduce manual handling. Certified and compliant with Australian Standards. Extends past the edge of the platform so operators can lower packages down to the floor.



## CATERPILLAR 793F ENGINE BAY PLATFORM

Part No. 5501493

### CONSTRUCTION

- Heavy-duty aluminium
- WLL: 450kg
- Height: 1280mm
- Non-slip work area
- Jockey stands and lifting lugs
- Self closing gate
- Stability jacks
- Removable handrails and self-closing gate



## CATERPILLAR 793 HAUL TRUCK

### IN-TRAY SIDE WALL ACCESS PLATFORM

Part No. 5503199

#### CONSTRUCTION

- Heavy-duty aluminium
- WLL: 250kg
- Length: 4600mm
- Width: 1900mm
- Height: 1900mm
- Heavy-duty jacking stands
- Self-closing gate
- Fitted with removable handrails



### CATERPILLAR 793F STRUT AND LINE BORING PLATFORM

Part No. 5501498

#### CONSTRUCTION

- Heavy-duty aluminium
- WLL: 250kg
- Height: 2200mm
- Non-slip stairway and work area
- Removable handrails
- Overhang for extra access
- Easy access stairway





# CATERPILLAR 793 HAUL TRUCK

## CATERPILLAR 793F REAR STRUTS PLATFORM

Part No. 5501029

### CONSTRUCTION

- Heavy-duty aluminium
- WLL: 150kg
- Height: 2100mm
- Non-slip stairway and work area
- Large industrial castors
- Self-closing gate
- Safety handrails



## CATERPILLAR 793F WORK PLATFORM

Part No. 5501313

Caterpillar 793F work platform designed and engineered for safe, efficient and easy maintenance. Certified and compliant with Australian Standards.

### CONSTRUCTION

- Heavy-duty aluminium
- Fitted with removable handrails
- Fitted with jacking stands
- Fitted with heavy-duty castors



## CATERPILLAR 793 HAUL TRUCK

### CATERPILLAR 793F AIR CLEANER PLATFORM Part No. 5501491

#### CONSTRUCTION

- Heavy-duty aluminium
- WLL: 250kg
- Height: 2800mm
- Non-slip stairway and work area
- Jacking stands for stability
- Mandrel bent stair safety handrails
- Overhang self-closing gate for safety and access



### CATERPILLAR 793F UPPER RADIATOR ACCESS Part No. 5415108

#### CONSTRUCTION

- Heavy-duty aluminium
- WLL: 250kg
- Height: 4000mm
- Non-slip stairway and work area
- Large industrial castors and levelling jacks
- Self-closing gate
- Safety handrails



# CATERPILLAR 793 HAUL TRUCK

## TRAY PIN REMOVAL PLATFORM

Part No. 5501483

### CONSTRUCTION

- Heavy-duty aluminium
- WLL: 250kg
- Length: 5250mm
- Access platform for tray pin removal
- Non-slip stairway and work area
- Heavy duty castor wheels
- Safety handrails
- Stability jacks
- Multiple platform sections bolt together to form the main platform
- Self-closing gate at the top of the stairs



## CATERPILLAR 793F DRIVER SIDE ACCESS PLATFORM

Part No. 5501496

### CONSTRUCTION

- Heavy-duty aluminium
- WLL: 250kg
- Length: 4200mm
- Heavy duty castor wheels
- Safety handrails
- Outriggers with stability jacks
- Platform bolts together in a top and bottom section
- Self-closing gate at top of stairs and boom rail at rear



## CATERPILLAR 793 HAUL TRUCK

### CATERPILLAR 793F LOWER RADIATOR ACCESS PLATFORM

Part No. 5414126

#### CONSTRUCTION

- Heavy-duty aluminium
- WLL: 250kg
- Height: 1800mm
- Self-closing gate
- Safety handrails
- Non-slip stairway and work area
- Large industrial castors and levelling jacks



### CATERPILLAR 793F LIFT ARM RAM ACCESS PLATFORM

Part No. 5504056

#### CONSTRUCTION

- Heavy-duty aluminium
- WLL: 250kg
- Height: 1950mm
- Non-slip stairway and work area
- Heavy-duty castor wheels
- Fitted with forklift slots
- Safety handrails





# CATERPILLAR 793 HAUL TRUCK

## CATERPILLAR 793F ACCESS TO CHASSIS RAIL PLATFORM

Part No. 5501028

### CONSTRUCTION

- Heavy-duty aluminium
- WLL: 250kg
- Height: 1700mm
- Non-slip stairway and work area
- Large industrial castors and levelling jacks
- Self-closing gate
- Safety handrails



## CATERPILLAR 793F CORNER MODULE

Part No. 5504223

### CONSTRUCTION

- Heavy-duty steel
- Finished in CAT yellow
- Handrails painted black
- Certified and compliant with Australian Standards



## CATERPILLAR 793 HAUL TRUCK

### CATERPILLAR 793F HANDRAIL CONVERSION

Part No.

- 1) 5000282
- 2) 5000281
- 3) 5000284
- 4) 5000283

#### CONSTRUCTION

- Heavy-duty
- Mounts in existing bolt holes on top
- Ladder handrails simply need welded stud plates for bolting handrails on
- Heavy duty construction



### CATERPILLAR 793F CHASSIS HANDRAILS

Part: 793FLH1

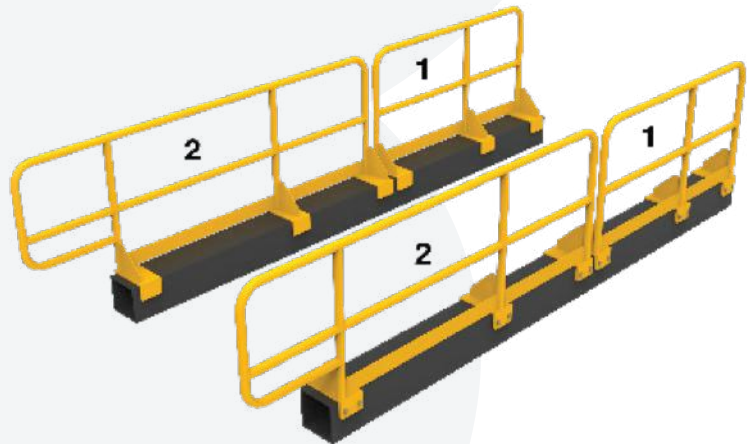
Part: 793FLH2

Part: 793FRH1

Part: 793FRH2

#### CONSTRUCTION

- Heavy-duty steel
- Certified and compliant with Australian Standards
- 4 handrail components available
- Finished in CAT yellow



### CATERPILLAR 793F REAR CHASSIS HANDRAIL

Part No. 5501294

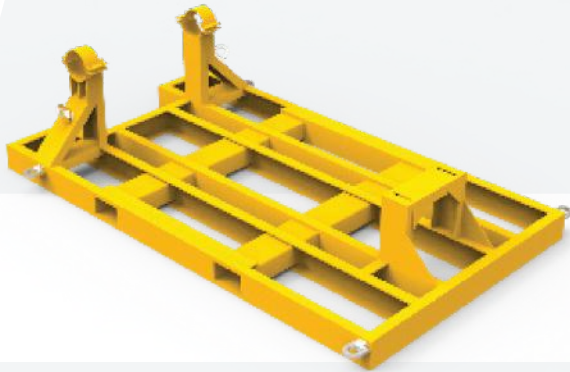
#### CONSTRUCTION

- Lightweight
- Threaded blocks clamp onto chassis and bolt on making the handrails removable
- TIG welded
- Powder coated Y14 Yellow



# CATERPILLAR 793 HAUL TRUCK

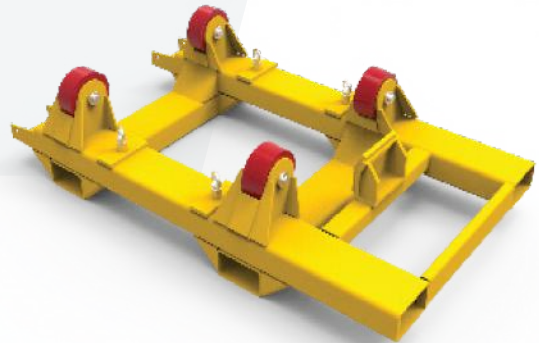
## CATERPILLAR 793D ENGINE SUPPORT AND TRANSPORT STAND Part No. 5401525



### CONSTRUCTION

- Heavy-duty steel
- WLL: 11 Tonne
- Height: 650mm
- Lifting eyes for ease of transport

## CATERPILLAR 793 WHEEL HUB SUPPORT FRAME Part No. 5413106



### CONSTRUCTION

- Heavy-duty steel
- WLL: 7.8 Tonne
- Rollers to allow frame movement during maintenance
- Fully engineered and certified
- Lifting eyes for ease of transport

## CATERPILLAR 793F LIFTING AND FLANGE REMOVAL TOOL Part No. 5501058



### CONSTRUCTION

- Heavy-duty steel
- WLL: 300kg
- Tool is screwed to a rated jacking table for lifting up and down

## CATERPILLAR 793 ROCK EJECTOR INSTALLATION TOOL Part No. 5512014



### CONSTRUCTION

- Heavy-duty steel
- WLL: 150kg
- Painted Y14 Golden Yellow

## CATERPILLAR 793 HAUL TRUCK

### CATERPILLAR 793F TRUCK FUEL TANK REMOVAL LIFTING FRAME Part No. 5501025



#### CONSTRUCTION

- Heavy-duty steel
- WLL: 4 Tonne
- Length: 2280mm
- Fork lift style: 3 Point Lifting Unit

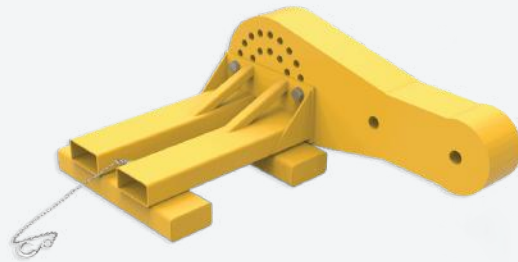
### ACCUMULATOR FORKLIFT LIFTING JIG Part No. 5503198



#### CONSTRUCTION

- Heavy-duty steel
- WLL: 150kg
- Tool is screwed to a rated jacking table for lifting up and down
- Suits 175mm diameter accumulators

### CATERPILLAR 793 WHEEL HUB SUPPORT FRAME Part No. 5502835



#### CONSTRUCTION

- Heavy-duty steel
- WLL: 800kg
- Height: 350mm
- Tie-down point with chain and hook

### CATERPILLAR 793 ROCK EJECTOR INSTALLATION TOOL Part No. 5501445



#### CONSTRUCTION

- High-strength Steel
- Height: 577mm
- Gas Struts for lid
- Key Lock
- Heavy Duty hydrocarbon resistant foam cut out



# CATERPILLAR 854K DROZER

## CATERPILLAR 854K EMERGENCY LADDER

Part No. 5502306

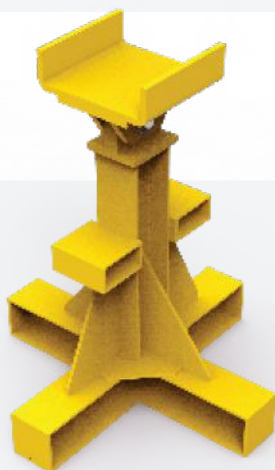
### CONSTRUCTION

- Heavy-duty aluminium
- ladder and slides
- Heavy-duty steel
- main frame
- WLL: 150kg
- Height: 2800mm
- Non-slip ladder nosings
- Torqued gear units for controlled release and easy lifting



## CATERPILLAR 854K WHEEL DOZER DRAFT ARM STAND

Part No. 5501549



### CONSTRUCTION

- Heavy-duty steel
- WLL: 50 Tonne
- Height: 1100mm
- Swivel top stand with pin

## CATERPILLAR 854K DIFF SKATE CRADLE

Part No. 5502504



### CONSTRUCTION

- High-strength Steel
- WLL: 10 Tonne
- Height: 300mm
- Finished in Y-14 safety yellow

## CATERPILLAR 966 WHEEL LOADER

### CATERPILLAR 966 ELECTRICAL ACCESS PLATFORM

Part No. 5501444

#### CONSTRUCTION

- Heavy-duty aluminium
- Non-slip stairway and work area
- Small access platform
- Safety rails
- Fixed wheels at rear
- Self-closing gates



## CATERPILLAR 980 WHEEL LOADER

### CATERPILLAR 980M SAFETY ACCESS PLATFORM SET

Part No. 5501049

#### CONSTRUCTION

- Heavy-duty aluminium
- WLL: 250kg
- Height: 1120mm
- Non-slip stairway and work area
- Self-closing gate
- Safety handrails



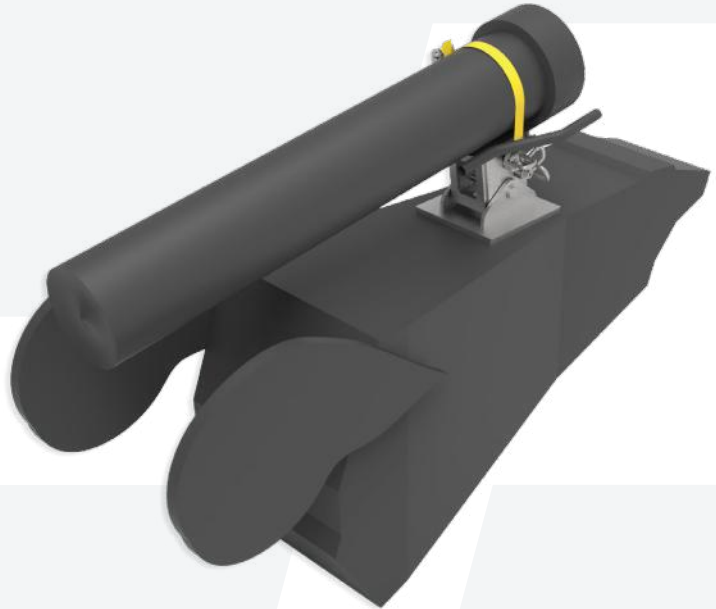
# CATERPILLAR 992K WHEEL LOADER

## CATERPILLAR 992J/K TILT CYLINDER SUPPORT STAND

Part No. 5504349

### CONSTRUCTION

- Heavy-duty aluminium
- WLL: 2 Tonne
- Height: 350mm
- Fitted with lifting lugs
- Ratchet strap



## CATERPILLAR 992K BUCKET BOOM ARM STANDS

Part No. 5500994



### CONSTRUCTION

- Heavy-duty steel
- WLL: 60 Tonne
- Height: 2440mm
- Finished in Y-14 safety yellow

## CATERPILLAR 992K BUCKET BOOM SUPPORT STAND

Part No. 5502628



### CONSTRUCTION

- Heavy-duty steel
- WLL: 100 Tonne
- Height: 2310mm
- Finished in Y-14 safety yellow

## CATERPILLAR 992K WHEEL LOADER

### CATERPILLAR 992K BUCKET BOOM SUPPORT STAND 3180MM (H)

Part No. 5504688

#### CONSTRUCTION

- Heavy-duty steel
- WLL: 50 Tonne
- Finished in Y-14 safety yellow
- Certified and compliant with Australian Standards



“ **MAKING MAINTENANCE  
ON-SITE SAFE, EFFICIENT  
AND EASY** ”



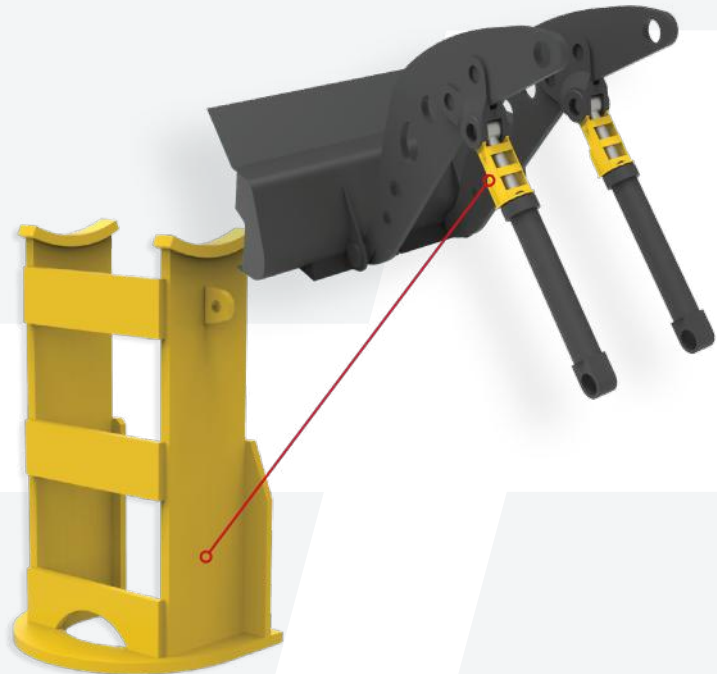
# CATERPILLAR 993K WHEEL LOADER

## CATERPILLAR 993 LIFT CYLINDER SUPPORT STANDS

Part No. 5504445

### CONSTRUCTION

- Heavy-duty steel
- WLL: 10 Tonne
- Used as a pair
- Lifting lugs attached
- Finished in safety yellow



## CATERPILLAR 993K LOWER RH ARTIC ACCESS PLATFORM

Part No. 5503773



### CONSTRUCTION

- Heavy-duty aluminium
- WLL: 150kg
- Height: 1200mm
- Non-slip stairway and work area
- Safety handrails and self-closing gate

## CATERPILLAR 993K 50T BOOM STAND

Part No. 5503347



### CONSTRUCTION

- Heavy-duty steel
- WLL: 50 Tonne
- Height: 3700mm
- Painted Y14 Golden Yellow



# CATERPILLAR 994H WHEEL LOADER

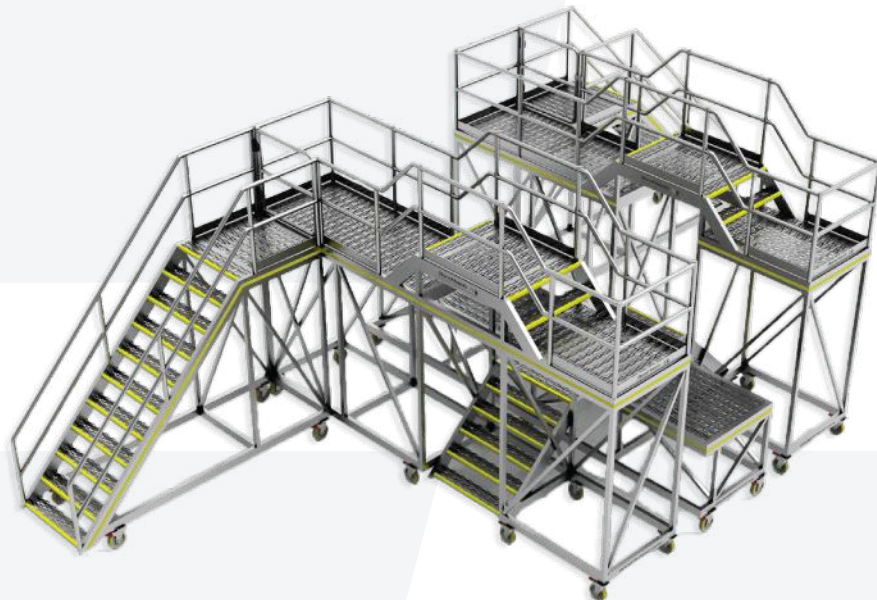
# CATERPILLAR 994H WHEEL LOADER

## CATERPILLAR 994H ACCESS PLATFORM

Part No. 5501487

### CONSTRUCTION

- Heavy-duty aluminium
- WLL: 250kg
- Length: 2850mm
- LH and RH side work platforms with additional middle platform
- Safety handrails
- Self closing gate
- Provides safe and efficient access



## CATERPILLAR 994H ARCTIC PLATFORM

Part No. 5501865

### CONSTRUCTION

- Heavy-duty aluminium
- WLL: 250kg
- Height: 2850mm
- Non-slip stairway and work area
- Adjustable handrails at front
- Self closing gate
- Extended overhang for extra access



## CATERPILLAR 994H WHEEL LOADER

### CATERPILLAR 994H ARTIC HIGH ACCESS PLATFORM

Part No. 5501486

#### CONSTRUCTION

- Heavy-duty aluminium
- WLL: 250kg
- Length: 2840mm
- Non-slip stairway and work area
- Self-closing gate
- Safety handrails
- Boom rail on front
- Outriggers with levelling jacks
- Fork pockets for easy transport

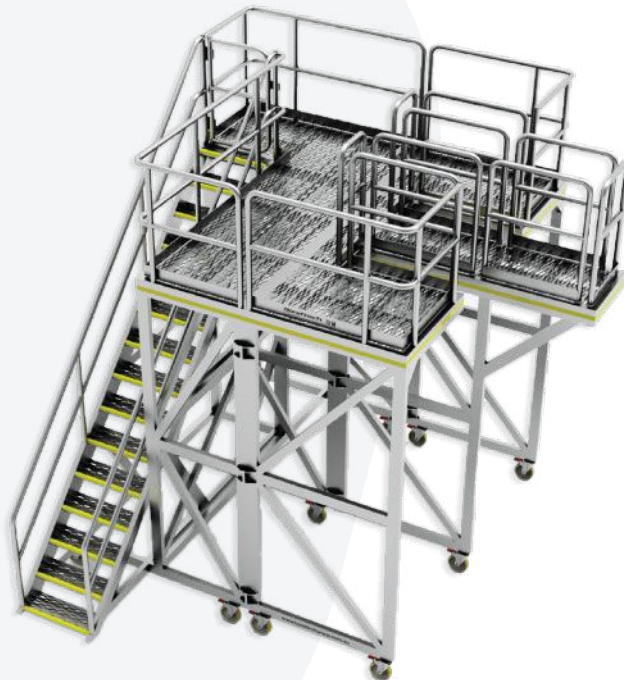


### CATERPILLAR 994H FRONT ARMS AND PIN PLATFORM

Part No. 5501499

#### CONSTRUCTION

- Heavy-duty aluminium
- WLL: 250kg
- Length: 3350mm
- Non-slip stairway and work area
- Removable handrails for easy of access
- Self closing gate
- Platforms bolt together for transport





# CATERPILLAR 994H WHEEL LOADER

## CATERPILLAR 994H EMERGENCY SIDE ACCESS AND WORK PLATFORM

Part No. 5501862

### CONSTRUCTION

- Heavy-duty aluminium
- WLL: 400kg
- Height: 2100mm
- Non-slip stairway and work area Self-closing gate
- Safety handrails



## CAT 994H LH - RH ARTIC SHORT PLATFORM

Part No. 5501492

### CONSTRUCTION

- Heavy-duty aluminium
- WLL: 250kg
- Height: 900mm
- Non-slip stairway and work area
- Safety handrails
- Self-closing gate
- Jacking stands for stability



## CATERPILLAR 994H FRONT TILT ACCESS PLATFORM

Part No. 5501919

### CONSTRUCTION

- Heavy-duty steel
- Non-slip work area
- Steel plates weld to bucket
- Platform bolts onto welded plates
- Safety handrails painted Y14 safety yellow



## CATERPILLAR 994H WHEEL LOADER

### CATERPILLAR 994F ACCESS STAIRS

Part No. 5501973

#### CONSTRUCTION

- Heavy-duty steel
- Certified and compliant with Australian Standards
- Includes stairs and handrails
- Alternative option to OEM build



### CAT 994 EMERGENCY EGRESS LADDER

Part No. 5504157

#### CONSTRUCTION

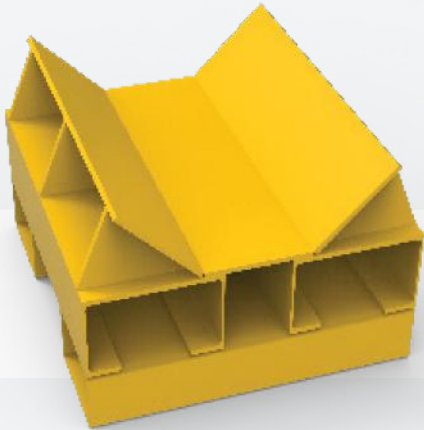
- High strength aluminium ladder
- High strength aluminium slides
- Non-slip ladder nosing's
- Heavy duty steel main frame
- Torqued gear units for controlled release and easy lifting
- Certified and compliant with Australian Standards \*Patent pending



# CATERPILLAR 994H WHEEL LOADER

## CATERPILLAR 994H TRANSMISSION HOLDER

Part No. 5501502



### CONSTRUCTION

- Heavy-duty steel
- WLL: 1.5 Tonne
- Height: 2440mm
- Finished in Y-14 safety yellow
- Engineered to drive efficiency

## CATERPILLAR 994H INNER SUN GEAR INSTALLATION TOOL

Part No. 5502734

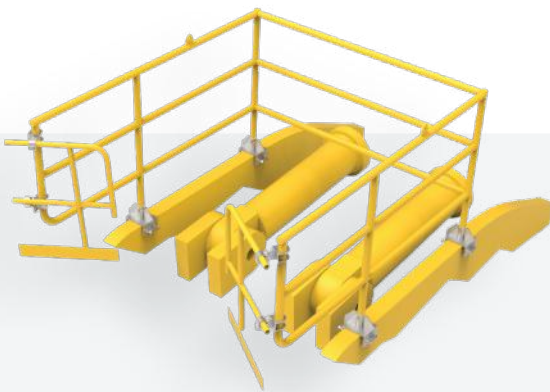


### CONSTRUCTION

- Heavy-duty steel
- Powder-coated in CAT Yellow
- Certified and engineered to Australian Standards

## LOADER BOOM FALL PROTECTION

Part No. 5503681

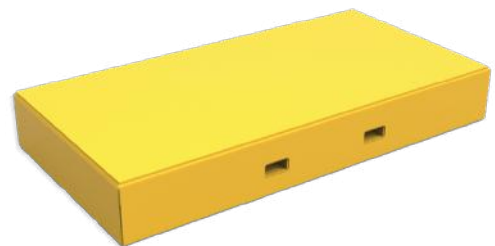


### CONSTRUCTION

- Heavy-duty aluminium
- Height: 1180mm
- Clamps to chassis with hand bolts
- Powder coated in Y-14 safety yellow
- Suits both Komatsu WA1200 and CAT 994 loaders

## LOADER BUCKET SKID STAND

Part No. 5503744



### CONSTRUCTION

- Heavy-duty steel
- WLL: 50 Tonne
- Height: 450mm
- Painted Y14 Golden Yellow



CATERPILLAR

# 7495 ROPE SHOVEL



## CONSTRUCTION

- Heavy-duty steel
- Certified and compliant with Australian Standards
- Replacement boom walkway handrails for the 7495 Rope Shovel.



## CATERPILLAR 7495 BOOM WALKAWAY HANDRAILS

Part No. 5502627



CATERPILLAR

## MT4400 TRUCK



A safe, certified and compliant access platform designed and engineered to access the front of the CAT MT4400 dump truck

**CONSTRUCTION**

- Heavy-duty aluminium
- WLL: 250kg
- Height: 2180mm
- Non-slip stairway and work area
- Large overhang for access
- Safety handrail
- Self-closing gate at the top of the stairs
- Certified and compliant with Australian Standards

**CAT MT4400 FRONT  
ACCESS PLATFORM**

Part No. 5501497



# HITACHI MACHINE RANGE

# HITACHI EX1900 EXCAVATOR

## HITACHI EX1900 RH FENDER 0

Part No. 5501997

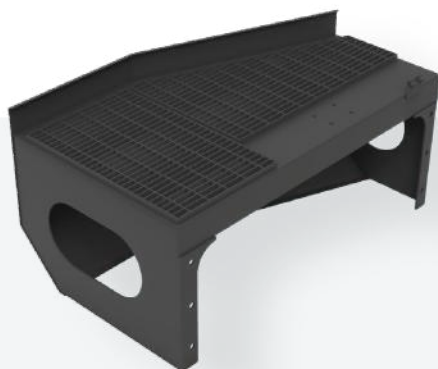


### CONSTRUCTION

- Heavy-duty steel
- Direct replacement to suit OEM No. 7042059
- Improve your replacement parts economy
- Certified and compliant with Australian Standards

## HITACHI EX1900 RH FENDER 2

Part No. 5501999



### CONSTRUCTION

- Heavy-duty steel
- Direct replacement to suit OEM No. 6025284
- Improve your replacement parts economy
- Certified and compliant with Australian Standards

## HITACHI EX1900 MIDDLE REAR PANEL 01

Part No. 5501998



### CONSTRUCTION

- Heavy-duty steel
- Direct replacement to suit OEM No. 6025283
- Improve your replacement parts economy
- Certified and compliant with Australian Standards

## HITACHI EX1900-6 RH FRONT CORNER PANEL 03

Part No. 5502000



### CONSTRUCTION

- Heavy-duty steel
- Direct replacement to suit OEM No. 6025286
- Improve your replacement parts economy
- Certified and compliant with Australian Standards



## HITACHI EX1900 EXCAVATOR

### HITACHI EX1900 LH FENDER 4

Part No. 5501996



#### CONSTRUCTION

- Heavy-duty steel
- Direct replacement to suit OEM No. 5011515
- Improve your replacement parts economy
- Certified and compliant with Australian Standards

### HITACHI EX1900 LH FENDER 21

Part No. 5501995

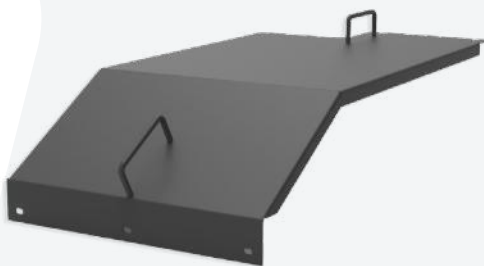


#### CONSTRUCTION

- Heavy-duty steel
- Direct replacement to suit OEM No. 6025792
- Improve your replacement parts economy
- Certified and compliant with Australian Standards

### HITACHI EX1900 TRAVEL MOTOR COVER 128

Part No. 5502031

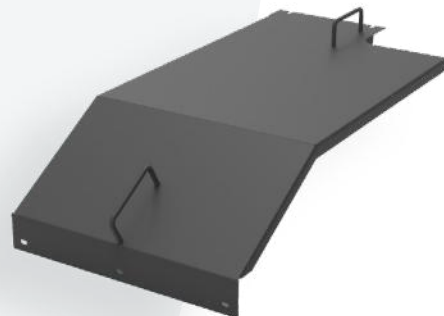


#### CONSTRUCTION

- Heavy-duty steel
- Direct replacement to suit OEM No. 7041385
- Improve your replacement parts economy
- Certified and compliant with Australian Standards

### HITACHI EX1900 TRAVEL MOTOR COVER 129

Part No. 5502032



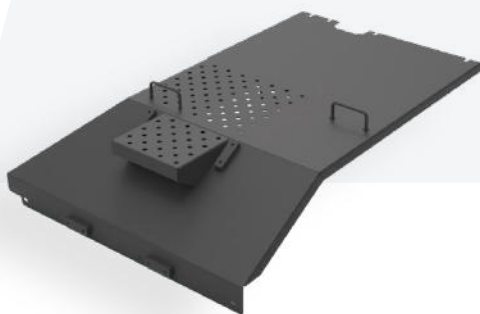
#### CONSTRUCTION

- Heavy-duty steel
- Direct replacement to suit OEM No. 7041388
- Improve your replacement parts economy
- Certified and compliant with Australian Standards



# HITACHI EX1900 EXCAVATOR

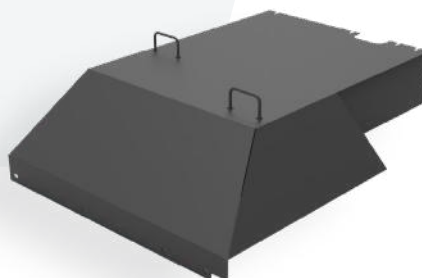
## HITACHI EX1900 TRAVEL MOTOR COVER 130 Part No. 5502033



### CONSTRUCTION

- Heavy-duty steel
- Direct replacement to suit OEM No. 6020529
- Improve your replacement parts economy
- Certified and compliant with Australian Standards

## HITACHI EX1900 TRAVEL MOTOR COVER 131 Part No. 5502034



### CONSTRUCTION

- Heavy-duty steel
- Direct replacement to suit OEM No. 6020552
- Improve your replacement parts economy
- Certified and compliant with Australian Standards

“ **MAKING MAINTENANCE  
ON-SITE SAFE, EFFICIENT  
AND EASY** ”

## HITACHI EX2500 EXCAVATOR

### HITACHI EX2500 BASH PLATE

Part No. 5500152



#### CONSTRUCTION

- Heavy-duty steel
- Modular design
- Painted to site or machine specific colours

### HITACHI EX2500 PLATFORM EXTENSION

Part No. 5501633

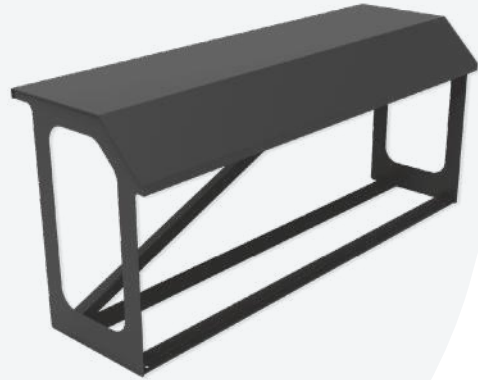


#### CONSTRUCTION

- Heavy-duty steel
- WLL: 250kg
- Height: 2350mm
- Base plates lock into grate below
- Certified and compliant with Australian Standards

### HITACHI EX2500 RH FENDER 14

Part No. 5502053



#### CONSTRUCTION

- Heavy-duty steel
- Direct replacement to suit OEM No. 7030106
- Improve your replacement parts economy
- Certified and compliant with Australian Standards

### HITACHI EX2500 CYLINDER PROTECTION

Part No. 5503492



#### CONSTRUCTION

- Extremely robust, flexible rock deflection
- Minimise expensive damage and downtime
- Provides full cover to the ram with no excess weight or restriction
- Cost effective solution
- Easy to install

# HITACHI EX3600 EXCAVATOR

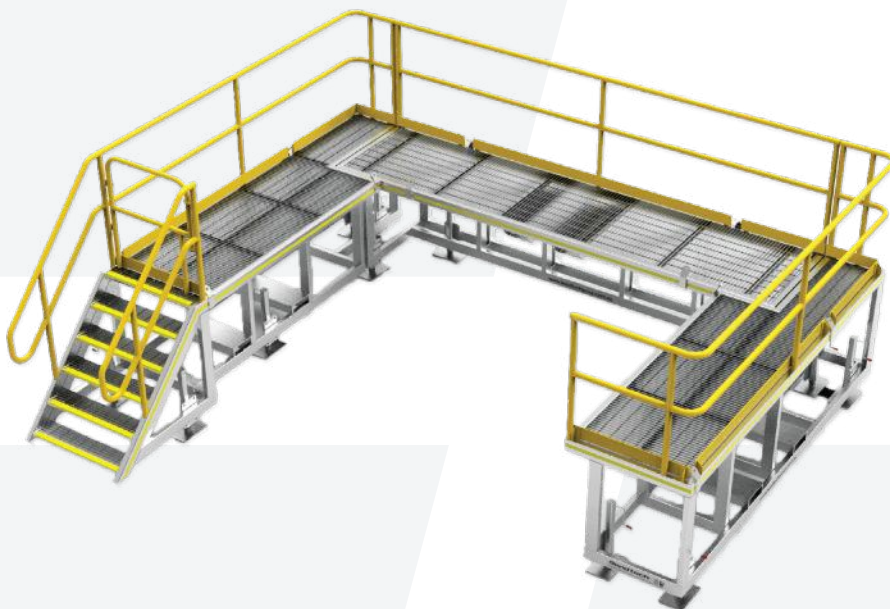
## HITACHI EX3600 BUCKET REPAIR PLATFORM

Part No. 5501885

A platform designed for the safe, certified and compliant access and repair of the EX3600 bucket.

### CONSTRUCTION

- Heavy-duty steel
- Can be used in the pit if needed
- Galvanised grid mesh
- Safety handrails
- painted in Y14 safety yellow



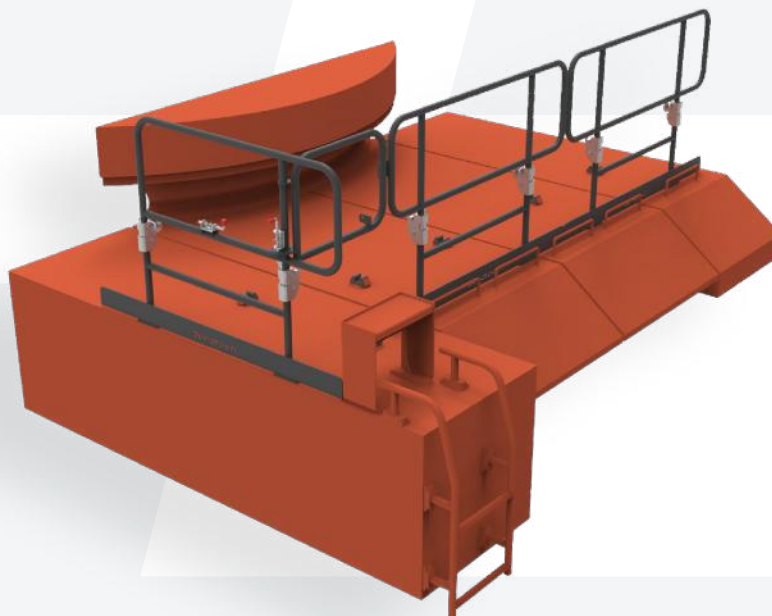
## HITACHI EX3600 TRAVEL MOTOR COVER FOLDING HANDRAILS

Part No. 5503665

Our Folding Safety Handrails provide a safe working space for the top of the Hitachi EX3600 travel motor covers. Certified and compliant with Australian Standards.

### CONSTRUCTION

- Heavy-duty steel
- Mid-folding design



## HITACHI EX3600 EXCAVATOR

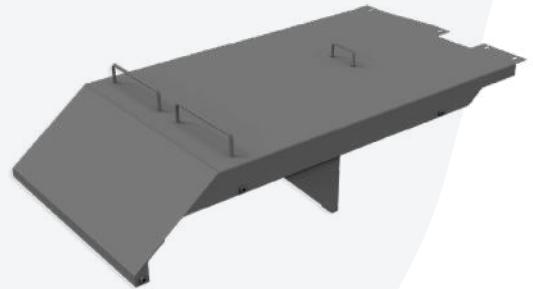
### HITACHI EX3600 TRAVEL MOTOR COVER 45 Part No. 5502020



#### CONSTRUCTION

- Heavy-duty steel
- Direct replacement to suit OEM No. 6020666
- Improve your replacement parts economy
- Certified and compliant with Australian Standards

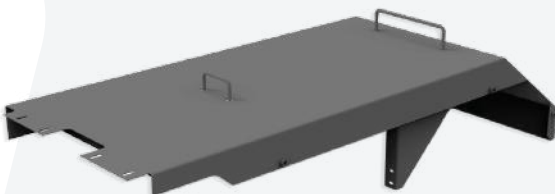
### HITACHI EX3600 TRAVEL MOTOR COVER 46 Part No. 5502021



#### CONSTRUCTION

- Heavy-duty steel
- Direct replacement to suit OEM No. 6020667
- Improve your replacement parts economy
- Certified and compliant with Australian Standards

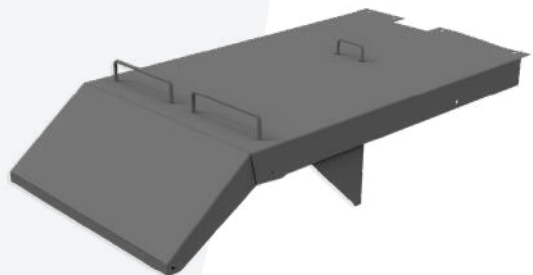
### HITACHI EX3600 TRAVEL MOTOR COVER 48 Part No. 5502022



#### CONSTRUCTION

- Heavy-duty steel
- Direct replacement to suit OEM No. 6022229
- Improve your replacement parts economy
- Certified and compliant with Australian Standards

### HITACHI EX3600 RH TRAVEL MOTOR COVER 49 Part No. 5502023



#### CONSTRUCTION

- Heavy-duty steel
- Direct replacement to suit OEM No. 6022230
- Improve your replacement parts economy
- Certified and compliant with Australian Standards



# HITACHI EX3600 EXCAVATOR

## HITACHI EX3600 RH FRONT FENDER 00

Part No. 5502018



### CONSTRUCTION

- Heavy-duty steel
- Direct replacement to suit OEM No. 5010764
- Improve your replacement parts economy
- Certified and compliant with Australian Standards

## HITACHI EX3600 LH FENDER 02

Part No. 5502024



### CONSTRUCTION

- Heavy-duty steel
- Direct replacement to suit OEM No. 6024652
- Improve your replacement parts economy
- Certified and compliant with Australian Standards

## HITACHI EX3600 RHS FENDER 03

Part No. 5502019



### CONSTRUCTION

- Heavy-duty steel
- Direct replacement to suit OEM No. 6024651
- Improve your replacement parts economy
- Certified and compliant with Australian Standards

## HITACHI EX3600 LHS FENDER 0

Part No. 5502028



### CONSTRUCTION

- Heavy-duty steel
- Direct replacement to suit OEM No. 5010763
- Improve your replacement parts economy
- Certified and compliant with Australian Standards

# HITACHI EX3600 EXCAVATOR

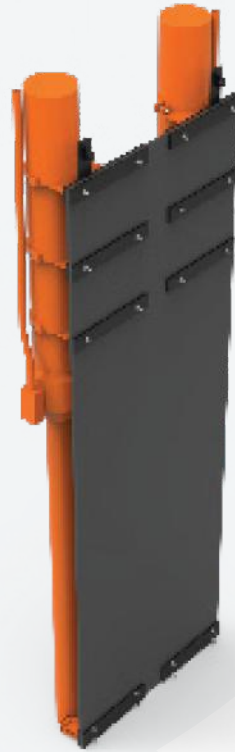
## HITACHI EX3600 CYLINDER PROTECTION

Part No. 5502294

The cover is a proven design that is in use in the Pilbara which provides a cost-effective complete cover of the ram with no excess weight or operative restriction.

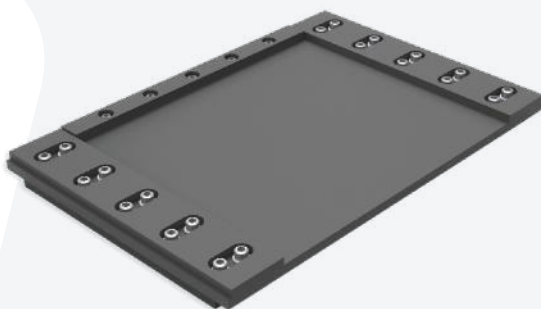
### CONSTRUCTION

- Heavy-duty
- Extremely robust, flexible rock deflection
- Minimise expensive damage and downtime
- Cost effective solution
- Provides full cover to the ram with no excess weight or restriction
- Stocked off-the-shelf ready for despatch
- Easy to install



## HITACHI EX3600 BASH PLATE

Part No. 5502903

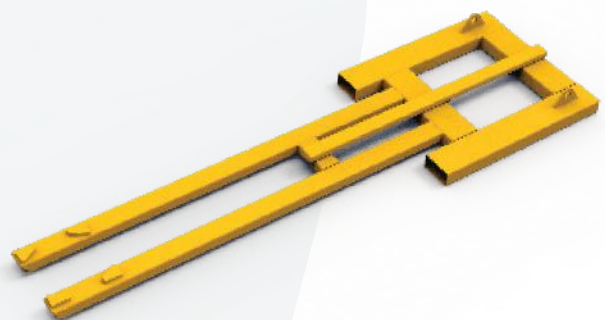


### CONSTRUCTION

- Heavy-duty steel
- Length: 1135mm
- Width: 760mm
- Certified and compliant with Australian Standards

## HITACHI EX3600 LOAD ROLLER STAND PLACEMENT FRAME

Part No. 5501545



### CONSTRUCTION

- Heavy-duty steel
- Length: 3486mm
- Width: 1060mm
- Radial lifter guides gusset and support plate
- Keeps forklift and workers out of harm's way

# HITACHI EX3600 EXCAVATOR

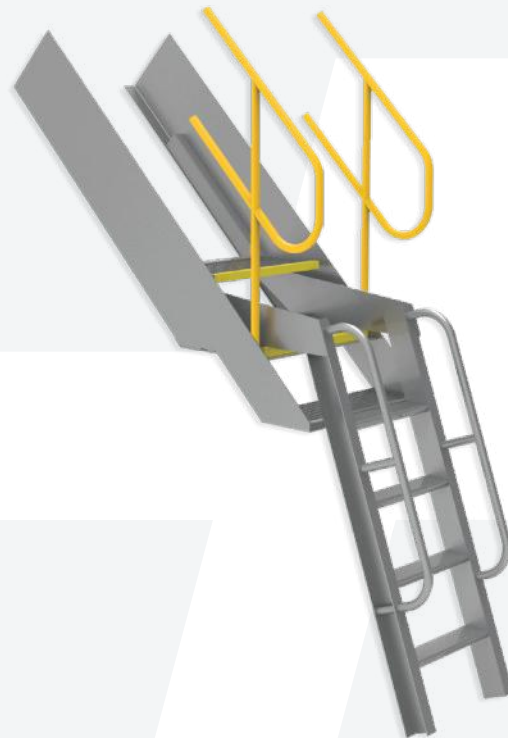
## HITACHI EX3600 ALUMINIUM LADDER EXTENSION

Part No. 5502538

An engineered and certified access solution for loading an EX3600 onto a low loader. There is the risk of falling from heights when using the conventional method of dismount.

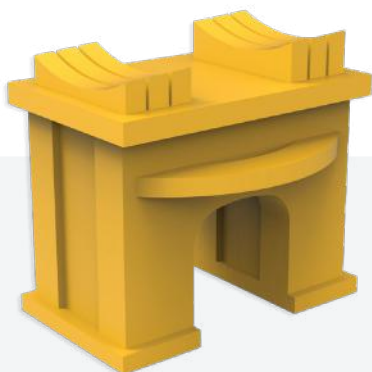
### CONSTRUCTION

- Heavy-duty lightweight aluminium
- WLL: 150kg
- Easy attachment to bottom of the OEM ladder



## HITACHI EX3600 LOAD ROLLER STAND

Part No. 5410163

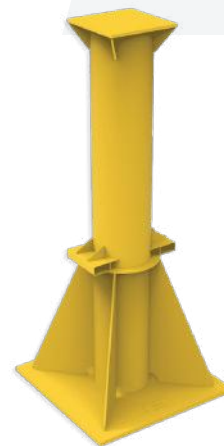


### CONSTRUCTION

- Heavy-duty steel
- WLL: 214 Tonne
- Height: 370mm
- Forklift attachment frame available

## HITACHI EX3600 BOOM STAND

Part No. 5504212



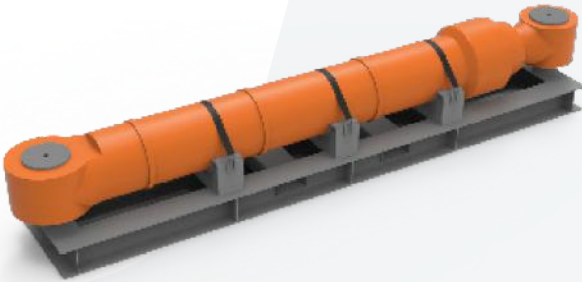
### CONSTRUCTION

- Heavy-duty steel
- WLL: 150kg
- Height: 4000mm
- Easy attachment to bottom of the OEM ladder

## HITACHI EX5600 EXCAVATOR

### HITACHI EX5500 ARM CYLINDER TRANSPORT FRAME

Part No. 5501992



#### CONSTRUCTION

- Heavy-duty steel
- Hot dipped galvanised
- Allows for easy, safe transport
- Certified and compliant

### HITACHI EX5500 BOOM CYLINDER TRANSPORT FRAME

Part No. 5501993

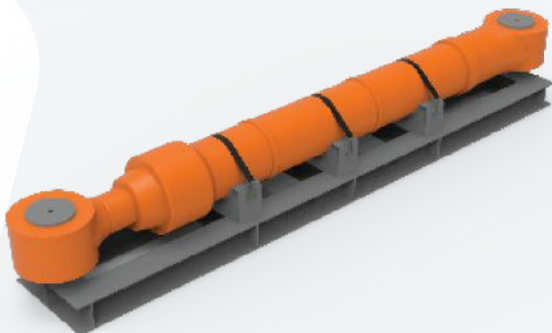


#### CONSTRUCTION

- Heavy-duty steel
- Hot dipped galvanised
- Allows for easy, safe transport
- Certified and compliant

### HITACHI EX5500 BUCKET CYLINDER TRANSPORT FRAME

Part No. 5501994

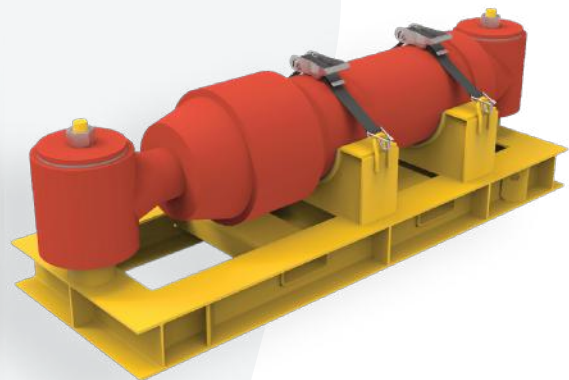


#### CONSTRUCTION

- Heavy-duty steel
- Hot dipped galvanised
- Allows for easy, safe transport
- Certified and compliant

### HITACHI EX5500 DUMP CYLINDER TRANSPORT FRAME

Part No. 5503664

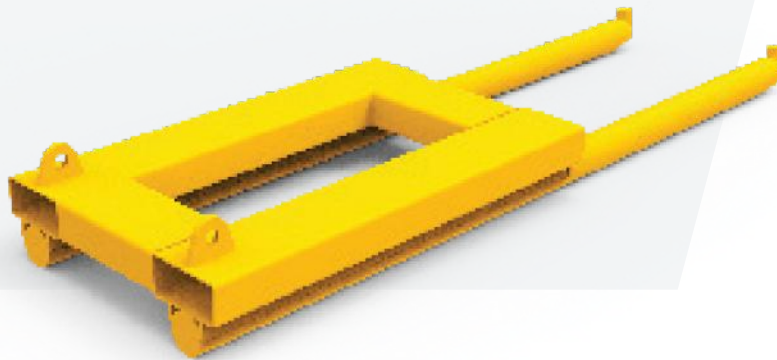


#### CONSTRUCTION

- Heavy-duty steel
- WLL: 1 Tonne
- Hot dipped galvanised
- Allows for easy, safe transport
- Certified and compliant



# HITACHI EX5500 EXCAVATOR



## HITACHI EX5500/EX3600 LOAD ROLLER CRADLE Part No. 5508181/5508182

Bend-tech's Load Roller Cradle is used for the removal and installation of load rollers for the Hitachi EX5500 excavator. Certified and compliant with Australian Standards.

### CONSTRUCTION

- Heavy-duty steel
- Painted Y14 Golden Yellow

“ **MAKING MAINTENANCE  
ON-SITE SAFE, EFFICIENT  
AND EASY** ”

**HITACHI**

# EX5500/ EX5600 EXCAVATOR

## HITACHI EX5500/EX5600 SLEW BEARING PLATFORM CHANGEOUT KIT

Part No. 5501259

A platform designed to access the front and back area of the slew bearing between the track. Safe, certified and compliant maintenance on both the EX5500 and EX5600.

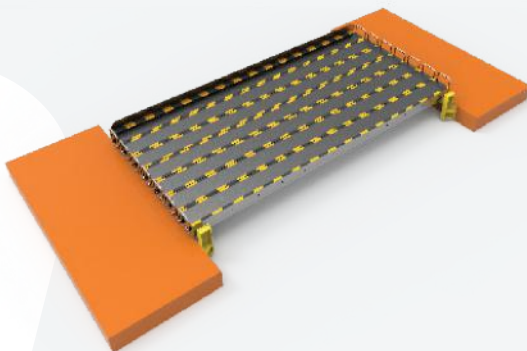
### CONSTRUCTION

- Heavy-duty aluminium
- WLL: 250kg
- Height: 2300mm
- Complete with handrails
- Handrails gaps are half meshed for increased safety
- Handrails bolt on the fixed threaded blocks
- Removable handrails
- Removable platforms at front of platform



## HITACHI EX5500/EX5600 BOOM HOSE PLATFORM

Part No. 5501432



### CONSTRUCTION

- Heavy-duty steel
- SWL: 200kg per plank
- Length: 3010mm
- Eliminates the need for scaffold
- Permanent steel members welded to machine
- Interchangeable aluminium access planks

## HITACHI EX5500/EX5600 ACCESS PLATFORM

Part No. 5501245



### CONSTRUCTION

- Heavy-duty steel
- WLL: 250kg
- Height 2060mm
- Fitted with handrails that hook over tracks
- Platform sits at front of machine and handrails on edge of tracks

# HITACHI EX5600 EXCAVATOR

## HITACHI EX5600 TRAVEL MOTOR COVER FOLDING HANDRAILS

Part No. 5503709

Our Folding Safety Handrails provide a safe working space for the top of the Hitachi EX5600 travel motor covers. Certified and compliant with Australian Standards.

### CONSTRUCTION

- Heavy-duty steel
- Mid-folding design
- Provide a safe working space for the top of the Hitachi EX5600 travel motor covers



## HITACHI EX5600 ACCESS PLATFORM

Part No. 5501451

### CONSTRUCTION

- Heavy-duty steel
- WLL: 250kg
- Height: 1800mm
- Wheels for ease of mobility
- Non-slip stairway and work area
- Fitted with Self-closing gate and safety handrails



## HITACHI EX5600 EXCAVATOR

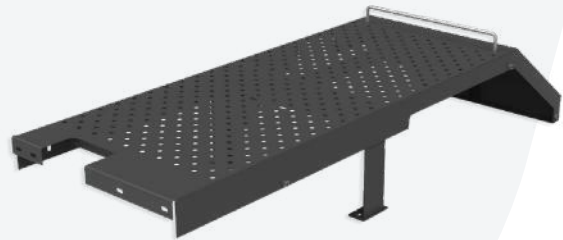
**HITACHI EX5600 TRAVEL  
MOTOR COVER 06**  
Part No. 5003000



### CONSTRUCTION

- Heavy-duty steel
- Direct replacement to suit OEM No. 6020598
- Improve your replacement parts economy
- Certified and compliant with Australian Standards

**HITACHI EX5600 TRAVEL  
MOTOR COVER 10**  
Part No. 5502017



### CONSTRUCTION

- Heavy-duty steel
- Direct replacement to suit OEM No. 6020601
- Improve your replacement parts economy
- Certified and compliant with Australian Standards

**HITACHI EX5600 RHS FENDER 00**  
Part No. 5502011



### CONSTRUCTION

- Heavy-duty steel
- Direct replacement to suit OEM No. 5011528
- Improve your replacement parts economy
- Certified and compliant with Australian Standards

**HITACHI EX5600 RH FENDER 01**  
Part No. 5502012



### CONSTRUCTION

- Heavy-duty steel
- Direct replacement to suit OEM No. 5011529
- Improve your replacement parts economy
- Certified and compliant with Australian Standards



# HITACHI EX5600 EXCAVATOR

## HITACHI EX5600 RH FENDER 05

Part No. 5502013



### CONSTRUCTION

- Heavy-duty steel
- Direct replacement to suit OEM No. 5011529
- Improve your replacement parts economy
- Certified and compliant with Australian Standards

## HITACHI EX5600 CYLINDER PROTECTION

Part No. 5503215



### CONSTRUCTION

- Extremely robust, flexible rock deflection
- Minimise expensive damage and downtime
- Cost effective solution
- Provides full cover to the ram with no excess weight or restriction
- Stocked off-the-shelf ready for despatch
- Easy to install

“ **MAKING MAINTENANCE  
ON-SITE SAFE, EFFICIENT  
AND EASY** ”

# HITACHI 5000EH TRUCK



A platform designed for the safe, certified and compliant access to the engine bay of the EH5000.

## CONSTRUCTION

- Heavy-duty aluminium
- WLL: 250kg
- Height: 2830mm
- Non-slip stairway and work area
- Safety handrail
- Self closing gate
- Jacking stands
- Heavy duty caster wheels



**HITACHI EH5000 ENGINE  
BAY ACCESS PLATFORM**  
Part No. 5501732

# HITACHI EX8000 EXCAVATOR

## HITACHI EX8000 RH FENDER 00

Part No. 5502003



### CONSTRUCTION

- Heavy-duty steel
- Direct replacement to suit OEM No. 5011698
- Improve your replacement parts economy
- Certified and compliant with Australian Standards

## HITACHI EX8000 RH FENDER 01

Part No. 5502004



### CONSTRUCTION

- Heavy-duty steel
- Direct replacement to suit OEM No. 5011689
- Improve your replacement parts economy
- Certified and compliant with Australian Standards

## HITACHI EX8000 TRAVEL MOTOR COVER 39

Part No. 5502008

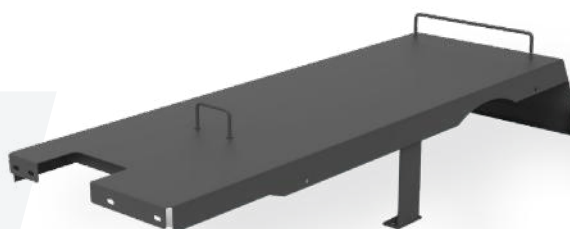


### CONSTRUCTION

- Heavy-duty steel
- Direct replacement to suit OEM No. 6022907
- Improve your replacement parts economy
- Certified and compliant with Australian Standards

## HITACHI EX8000 TRAVEL MOTOR COVER 41

Part No. 5502010



### CONSTRUCTION

- Heavy-duty steel
- Direct replacement to suit OEM No. 6022909
- Improve your replacement parts economy
- Certified and compliant with Australian Standards



## EPIROC / ATLAS MACHINE RANGE



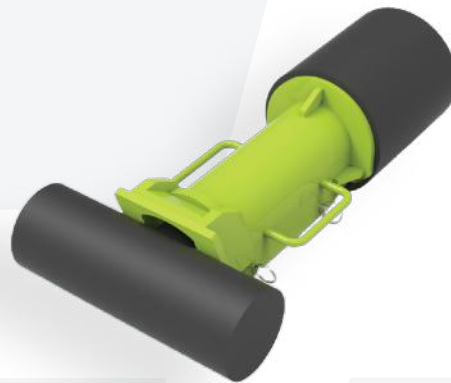
## EPIROC / ATLAS D65 SURFACE DRILL

### EPIROC D65 DRILL BOOM RAISE RAM CLAMP

Part No. 5503365

#### CONSTRUCTION

- Heavy-duty steel
- WLL: 30 Tonne
- Clamps to the boom raise cylinder when extended
- Manual handling weights of 14kg max
- Installation time under 1 minute



### EPIROC D65 CLAMP STORAGE TOOLBOX

Part No. 5504044

#### CONSTRUCTION

- Heavy-duty steel
- Height: 500mm
- Holds 3x Rear Jackstand Clamps (5503499) and 1x Boom Raise Clamp (5503365).
- Gas struts for lid
- Key lock with T handles
- Heavy-duty hydrocarbon resistant foam cut out
- Each tool has a specifically CNC routed cutout
- Fitted with forklift slots
- Laser cut ID plate attached to top of lid
- Specific signage and stickers available on request



**EPIROC / ATLAS**

## **PV-271 BLASTHOLE DRILL**

### **EPIROC PV-271 TRACK FRAME LIFTING JIB**

Part No. 5502513

#### **CONSTRUCTION**

- Heavy-duty steel
- WLL: 9.5 Tonne
- Height: 1650mm
- Fitted with forklift slots – 1325mm c/c
- Lugs to attach frame to jib

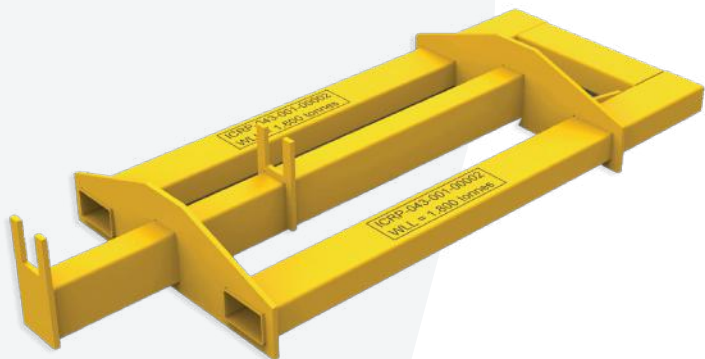


### **EPIROC PV-271 EQUALISER BAR LIFTING JIB**

Part No. 5502514

#### **CONSTRUCTION**

- Heavy-duty steel
- WLL: 1.8 Tonne
- Length: 2870mm
- Finished in Y-14 safety yellow
- Signage attached





# KOMATSU MACHINE RANGE

 [www.bendtechgroup.com.au](http://www.bendtechgroup.com.au)





## KOMATSU 475A DOZER



A safe, certified and compliant access platform designed and engineered to suit accessing the engine bay of both the CAT D11 dozer and KOMATSU 475A

### CONSTRUCTION

- Heavy-duty
- WLL: 250kg
- Height: 1810mm
- Large non-slip stairway and platform deck for stability and space
- Swing out gates on end of platform can be locked in place incrementally
- Self-closing gate at the top of the stairs
- Safety handrail
- Large 300mm all terrain rubber wheels
- Fitted jacking stands



### KOMATSU 475A DOZER ENGINE BAY ACCESS PLATFORM

Part No. 5501431



# KOMATSU 730E DUMP TRUCK

## HAUL TRUCK WHEEL SERVICE PLATFORM

Part No. 5401579

### CONSTRUCTION

- Heavy-duty aluminium
- Non-slip stairway and work area
- Removable handrails
- Self closing gate
- Work bench on both ends for tool storage
- Adjustable jacking stands for uneven ground
- Monorail available as a manual handling upgrade
- Also suitable for the KOMASTU 830E



## FRONT CALIPER REMOVAL MONORAIL PLATFORM

Part No. 5503423

### CONSTRUCTION

- Heavy-duty aluminium
- Non-slip stairway and work area
- Removable handrails
- Self closing gate
- Work bench on both ends for tool storage
- Adjustable jacking stands for uneven ground
- Monorail available as a manual handling upgrade
- Also suitable for the KOMASTU 830E



## KOMATSU 730E FRONT ENGINE ACCESS PLATFORM

Part No. 5502481

### CONSTRUCTION

- Heavy-duty aluminium
- Non-slip stairway and work area
- Fitted with heavy-duty lockable castors
- Fitted with work bench
- Also suitable for the KOMASTU 830E



# KOMATSU 730E DUMP TRUCK

## KOMATSU 730E OVER FUEL TANK ACCESS PLATFORM

Part No. 5501514

### CONSTRUCTION

- Heavy-duty aluminium
- WLL: 350kg
- Height: 3800mm
- Non-slip stairway and work area
- Out-swinging gates and safety handrails
- Also suitable for the KOMASTU 830E



## KOMATSU 730E BATTERY MAINTENANCE PLATFORM

Part No. 5502477

### CONSTRUCTION

- Heavy-duty aluminium
- WLL: 150kg
- Height: 800mm
- Non-slip stairway and work area
- Fitted with heavy-duty lockable castors
- Also suitable for the KOMASTU 830E



## KOMATSU 730E FRONT ENTRY ACCESS PLATFORM STAIRS

Part No. 5501721

### CONSTRUCTION

- Heavy-duty aluminium
- WLL: 150kg
- Height: 800mm
- Dual self-closing gates at the rear of the platform
- Non-slip stairway and work area
- Also suitable for the KOMASTU 830E and 930E



# KOMATSU 730E DUMP TRUCK

## KOMATSU 730E ENGINE BAY PLATFORM

Part No. 5501231

### CONSTRUCTION

- Heavy-duty aluminium
- WLL: 200kg
- Height: 580mm
- Supplied in pairs
- Extended height handrails



## KOMATSU 730E ENGINE ACCESS PLATFORM

Part No. 5502934

### CONSTRUCTION

- Heavy-duty aluminium
- WLL: 200kg
- Height: 1900mm
- Non-slip stairway and work area
- Safety handrails
- High quality caster wheels
- Also suitable for the KOMASTU 830E



## KOMATSU 730E AIR FILTER ACCESS PLATFORMS

Part No. 5501024

### CONSTRUCTION

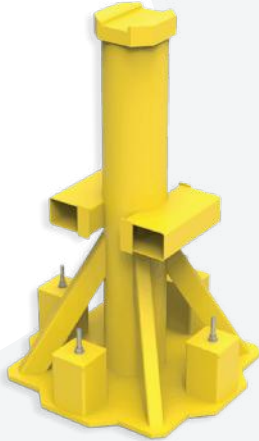
- Heavy-duty aluminium
- Non-slip stairway and work area
- Fitted with heavy-duty jacking stands
- Fitted with heavy-duty lockable castors
- Also suitable for the KOMASTU 830E



## KOMATSU 730E DUMP TRUCK

### KOMATSU 730E CHASSIS STAND

Part No. 5002016



#### CONSTRUCTION

- Heavy-duty steel
- WLL: 100T each
- Fitted with retractable wheels

### CURVED STAND ADAPTER TO SUIT KOMATSU CHASSIS STAND

Part No. 5502153

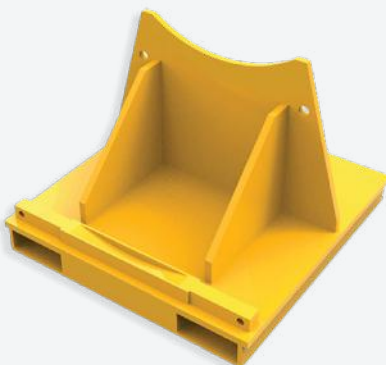


#### CONSTRUCTION

- Heavy-duty steel
- WLL: 100T each
- Fitted with retractable wheels

### KOMATSU 730E WHEEL HUB SUPPORT FRAME

Part No. 5000105



#### CONSTRUCTION

- Heavy-duty steel
- WLL: 1500kg
- Lifting eyes for ease of transport
- Tie down points for stability
- Also suitable for the KOMASTU 830E

### KOMATSU 730E STEERING ARM REMOVAL TOOL

Part No. 5501148



#### CONSTRUCTION

- Heavy-duty steel
- WLL: 400kg
- Length: 1270mm
- Designed to fix onto a scissor lift trolley
- Also suitable for the KOMASTU 830E and 930E



# KOMATSU 830E DUMP TRUCK

## HAUL TRUCK WHEEL SERVICE PLATFORM

Part No. 5401579

### CONSTRUCTION

- Heavy-duty aluminium
- Non-slip stairway and work area
- Removable handrails
- Self closing gate
- Work bench on both ends for tool storage
- Adjustable jacking stands for uneven ground
- Monorail available as a manual handling upgrade
- Also suitable for the KOMASTU 730E



## FRONT CALIPER REMOVAL MONORAIL PLATFORM

Part No. 5503423

### CONSTRUCTION

- Heavy-duty aluminium
- Non-slip stairway and work area
- Removable handrails
- Self closing gate
- Work bench on both ends for tool storage
- Adjustable jacking stands for uneven ground
- Monorail available as a manual handling upgrade
- Also suitable for the KOMASTU 730E



## KOMATSU 730E FRONT ENGINE ACCESS PLATFORM

Part No. 5502481

### CONSTRUCTION

- Heavy-duty aluminium
- Non-slip stairway and work area
- Fitted with heavy-duty lockable castors
- Fitted with work bench
- Also suitable for the KOMASTU 8730E



## KOMATSU 830E DUMP TRUCK

### KOMATSU 830E ENGINE ACCESS PLATFORM

Part No. 5502934

#### CONSTRUCTION

- Heavy-duty aluminium
- WLL: 200kg
- Height: 1900mm
- Non-slip stairway and work area
- Safety handrails
- High quality caster wheels
- Also suitable for the KOMASTU 730E



### KOMATSU 830E AIR FILTER ACCESS PLATFORMS

Part No. 5501024

#### CONSTRUCTION

- Heavy-duty aluminium
- Non-slip stairway and work area
- Fitted with heavy-duty jacking stands
- Fitted with heavy-duty lockable castors
- Also suitable for the KOMASTU 730E

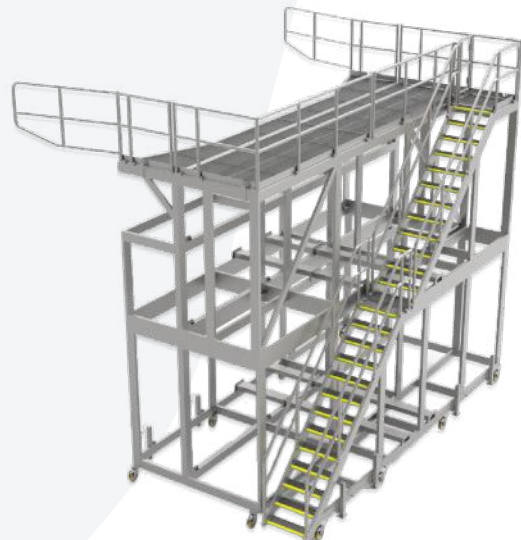


### KOMATSU 830E TRAY ACCESS PLATFORM

Part No. 5504575

#### CONSTRUCTION

- Heavy-duty aluminium
- WLL: 150kg
- Height: 5500mm
- Fitted with swinging side handrails
- Heavy-duty castor wheels
- Jacking stands
- Certified and compliant with Australian Standards



# KOMATSU 830E DUMP TRUCK

## KOMATSU 830E OVER FUEL TANK ACCESS PLATFORM

Part No. 5501514

### CONSTRUCTION

- Heavy-duty aluminium
- WLL: 350kg
- Height: 3800mm
- Non-slip stairway and work area
- Out-swinging gates and safety handrails
- Also suitable for the KOMASTU 730E



## KOMATSU 830E BATTERY MAINTENANCE PLATFORM

Part No. 5502477

### CONSTRUCTION

- Heavy-duty aluminium
- WLL: 150kg
- Height: 800mm
- Non-slip stairway and work area
- Fitted with heavy-duty lockable castors
- Also suitable for the KOMASTU 730E



## KOMATSU 830E FRONT ENTRY ACCESS PLATFORM STAIRS

Part No. 5501721

### CONSTRUCTION

- Heavy-duty aluminium
- WLL: 150kg
- Height: 800mm
- Dual self-closing gates at the rear of the platform
- Non-slip stairway and work area
- Also suitable for the KOMASTU 730E and 930E



# KOMATSU 830E DUMP TRUCK

## KOMATSU 830E ACI ENGINE MODULES PLATFORM

Part No. 5501247

### CONSTRUCTION

- Heavy-duty aluminium
- WLL: 200kg
- Height: 750mm
- Access for both sides of engine
- Non-slip stairway and work area
- Safety handrails
- Self closing gates



## KOMATSU 830E STRUT ACCESS PLATFORM

Part No. 5502975

### CONSTRUCTION

- Heavy-duty aluminium
- WLL: 150kg
- Height: 2200mm
- Non-slip stairway and work area
- Fitted with heavy-duty lockable castors



## KOMATSU 830E ENGINE BAY ACCESS PLATFORM AND LADDER

Part No. 5501793

### CONSTRUCTION

- Heavy-duty aluminium
- Extended height handrails
- Complete safety when working in hard to reach areas
- Sliding access door
- Fold-down ladder





# KOMATSU 830E DUMP TRUCK

## KOMATSU 830E AIR FILTER ACCESS STATION PLATFORM

Part No. 5501548

Our access station allows for the safe access and inspection of the air filters on the Komatsu 830E dump trucks. Certified and compliant with Australian Standards.

### CONSTRUCTION

- Heavy-duty steel
- SWL: 400kg
- Access for both sides of engine
- Non-slip stairway and work area
- Self closing gate
- Safety handrails
- Solar lights are added to the platform for extra light at night



## KOMATSU 830E PLATFORM WITH LADDER LHS

Part No. 5002105



### CONSTRUCTION

- Heavy-duty aluminium
- SWL: 150kg
- Height: 580mm
- Locking gates for safety
- Can be modified for tyre and truck configurations

## KOMATSU 830E PLATFORM WITH LADDER RHS

Part No. 5002104



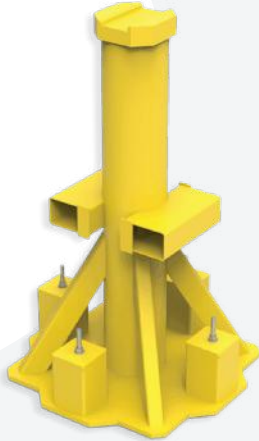
### CONSTRUCTION

- Heavy-duty aluminium
- SWL: 150kg
- Height: 580mm
- Locking gates for safety
- Can be modified for tyre and truck configurations

# KOMATSU 830E DUMP TRUCK

## KOMATSU 730E CHASSIS STAND

Part No. 5002016

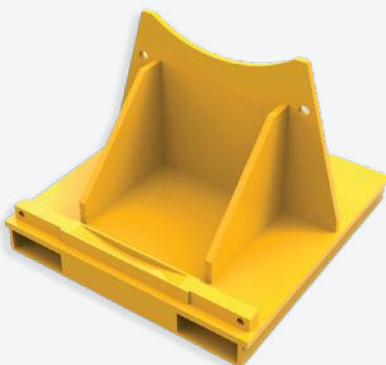


### CONSTRUCTION

- Heavy-duty steel
- WLL: 100T each
- Fitted with retractable wheels
- Also suitable for the KOMASTU 830E

## KOMATSU 730E WHEEL HUB SUPPORT FRAME

Part No. 5000105



### CONSTRUCTION

- Heavy-duty steel
- WLL: 1500kg
- Lifting eyes for ease of transport
- Tie down points for stability
- Also suitable for the KOMASTU 830E

## CURVED STAND ADAPTER TO SUIT KOMATSU CHASSIS STAND

Part No. 5502153



### CONSTRUCTION

- Heavy-duty steel
- WLL: 100T each
- Fitted with retractable wheels
- Also suitable for the KOMASTU 830E

## KOMATSU 730E STEERING ARM REMOVAL TOOL

Part No. 5501148



### CONSTRUCTION

- Heavy-duty steel
- WLL: 400kg
- Length: 1270mm
- Designed to fit onto a scissor lift trolley
- Also suitable for the KOMASTU 830E and 930E

## KOMATSU 830E DUMP TRUCK

### KOMATSU 830E HYDRAULIC FILTER REMOVAL STAND

Part No. 5503477



#### CONSTRUCTION

- Heavy-duty steel
- WLL: 100kg
- Removable oil drain pan
- Adjustable height
- Fitted with gas struts
- Fitted with caster wheels

### KOMATSU 830E OIL FILTER REMOVAL TROLLEY STAND

Part No. 5502664



#### CONSTRUCTION

- Heavy-duty steel
- WLL: 100kg
- Removable oil drain pan
- Adjustable height
- Gas struts
- Caster wheels for ease of movement

“ **MAKING MAINTENANCE  
ON-SITE SAFE, EFFICIENT  
AND EASY** ”

## KOMATSU 830E DUMP TRUCK

### KOMATSU 830E LIFTING JIG

Part No. 5501743



#### CONSTRUCTION

- Heavy-duty steel
- WLL: 500kg
- Straps fitted to hold steering accumulator in place
- Finished in Y14 Safety Yellow

### KOMATSU 830E SUPPORT STAND WITH CURVED TOP

Part No. 5503126



#### CONSTRUCTION

- Heavy-duty steel
- WLL: 150kg
- Height: 1900mm-2020mm
- Pin at 2 separate heights
- Hydraulic cylinder with hand pump
- Also suitable for the KOMASTU 930E

### KOMATSU 830E CHASSIS HANDRAIL

Part No. 5500483

#### CONSTRUCTION

- Heavy-duty aluminium
- Handrails bolt to the chassis rails for protection when working in the chassis area
- Aluminium construction for easy lifting in and out
- Fitted with lock bolts ensure strong fixing to the chassis





# KOMATSU 930E DUMP TRUCK

## KOMATSU 930E STRUT PIN ACCESS PLATFORM

Part No. 5503428

### CONSTRUCTION

- Heavy-duty aluminium
- WLL: 150kg
- Height: 1470mm
- Non-slip stairway and work area
- Removable handrails on front for easy access
- Self-closing gate
- Levelling jacking stands



## KOMATSU 930E FRONT ENTRY ACCESS PLATFORM STAIRS

Part No. 5501721

### CONSTRUCTION

- Heavy-duty aluminium
- WLL: 150kg
- Height: 800mm
- Dual self-closing gates at the rear of the platform
- Non-slip stairway and work area
- Also suitable for the KOMASTU 730E and 830E



## KOMATSU 930E DUMP TRUCK

### KOMATSU 930E ENGINE ACCESS PLATFORM

Part No. 5503559

#### CONSTRUCTION

- Heavy-duty aluminium
- WLL: 200kg
- Height: 1900mm
- Non-slip stairway and work area
- Safety handrails



### KOMATSU 930E STRUT PLATFORM

Part No. 5501773

#### CONSTRUCTION

- Heavy-duty aluminium
- WLL: 250kg
- Height: 2300mm
- Non-slip stairway and work area
- Removable handrails on front for easy access
- Self closing gate
- Outriggers for extra stability



# KOMATSU 930E DUMP TRUCK

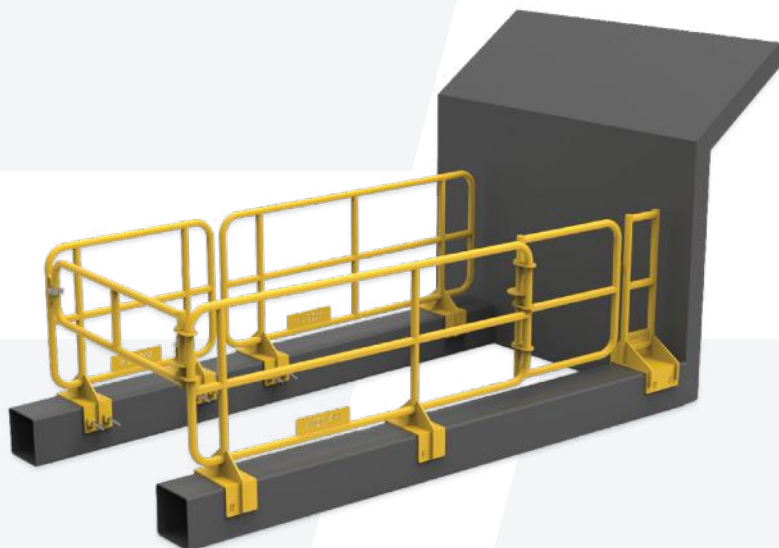
## KOMATSU 930E CHASSIS HANDRAIL SET

Part No. 5501069

Komatsu 930E-4 chassis handrails designed and engineered for safe, efficient and easy maintenance.

### CONSTRUCTION

- Heavy-duty aluminium
- Certified and compliant with Australian Standards
- Lightweight for easy install
- Fitted with heavy-duty fixings to lock to the chassis



## KOMATSU 930E CHASSIS HANDRAIL STORAGE STAND

Part No. 5501184

### CONSTRUCTION

- Heavy-duty steel
- Certified and compliant with Australian Standards
- Finished in Y14 safety yellow



## KOMATSU 930E DUMP TRUCK

### KOMATSU 930E STEERING ARM REMOVAL TOOL

Part No. 5501148

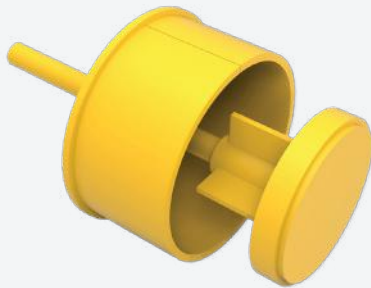


#### CONSTRUCTION

- Heavy-duty steel
- WLL: 400kg
- Length: 1270mm
- Finished in Y-14 safety yellow
- Designed to fix onto a scissor lift trolley
- Also suitable for the KOMASTU 730E and 830E

### KOMATSU 930E HOIST CYLINDER BEARING PULLER

Part No. 5501209



#### CONSTRUCTION

- Heavy-duty steel
- Finished in Y14 safety yellow
- Can be customised to suit your machine

### KOMATSU 930E SUPPORT STAND WITH CURVED TOP

Part No. 5503126

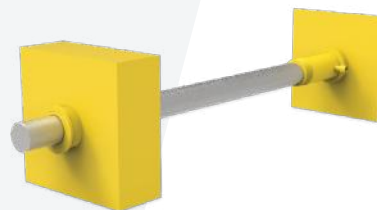


#### CONSTRUCTION

- Heavy-duty steel
- WLL: 150kg
- Height: 1900mm-2020mm
- Pin at 2 separate heights
- Hydraulic cylinder with hand pump
- Also suitable for the KOMASTU 830E

### KOMATSU 930E TOP HOIST PIN REMOVAL TOOL

Part No. 5503808



#### CONSTRUCTION

- Heavy-duty steel
- WLL: 50T
- Length: 1870mm



KOMATSU

## WA900 WHEEL LOADER



Our 80 tonne boom support stands are designed and engineered to allow safe maintenance to the bucket and underneath the boom of the Komatsu WA 900 loader.

**CONSTRUCTION**

- Heavy-duty steel
- WLL: 80 Tonne
- Height: 3200mm
- Fitted with forklift slots
- Fitted with lifting eyes

**KOMATSU WA900  
BOOM STAND 80 TONNE**

Part No. 5503994

# KOMATSU WA1200 WHEEL LOADER

## KOMATSU WA1200 ARTIC FRONT STRUT AREA PLATFORM

Part No. 5501638

Our access platform LH and RH set provides the safe and convenient access to the WA1200 Artic/Front Strut Area.

### CONSTRUCTION

- Heavy-duty aluminium
- WLL: 250kg
- Height: 1900mm
- LH and RH configurations
- Non-slip stairway and work area
- Removable handrails on all sides for easy access
- Self-closing gate



## KOMATSU WA1200 FRONT ARTIC / BOOM HOSE ACCESS

Part No. 5501039



### CONSTRUCTION

- Heavy-duty aluminium
- Large industrial castors
- Non-slip stairway and work area
- Self-closing gates
- Safety handrails

## KOMATSU WA1200 FRONT HATCH ACCESS PLATFORM

Part No. 5501582



### CONSTRUCTION

- Heavy-duty aluminium
- WLL: 250kg
- Height: 3000mm
- Non-slip stairway and work area
- Self-closing doors
- Flip down handrails

# KOMATSU WA1200 WHEEL LOADER

## KOMATSU WA1200 INTERNAL TRANSMISSION AREA ACCESS PLATFORM

Part No. 5501628



### CONSTRUCTION

- Heavy-duty aluminium
- Recessed lifting lugs in platform deck for crane access
- Narrow access
- For slots for efficient mobility

## WA1200 BUCKET WORK PLATFORM

Part No. 5502307



### CONSTRUCTION

- Heavy-duty aluminium
- WLL: 500kg
- Large industrial castors
- Non-slip stairway and work area
- Self-closing gates

## KOMATSU WA1200 TREADLE ACCESS PLATFORM SET

Part No. 5502820

### CONSTRUCTION

- Heavy-duty aluminium
- Height: 2260mm
- Non-slip stairway and work area
- LH and RH configurations
- Removable handrails on all sides for ease of access
- Self-closing gates





## KOMATSU WA1200 WHEEL LOADER

### KOMATSU WA1200 DROP-IN BUCKET PIN ACCESS PLATFORM

Part No. 5502744

An Access Platform designed and engineered to safely access the bucket pins at the front of the Komatsu WA1200 Loader.

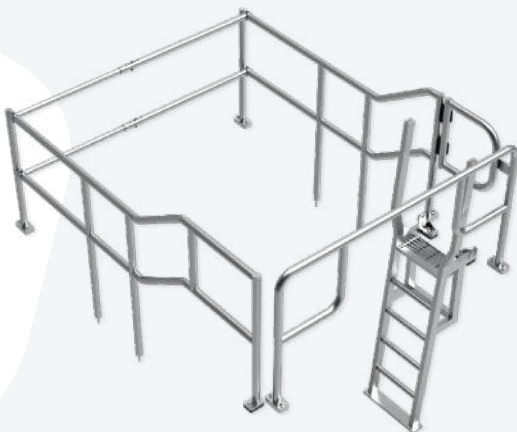
#### CONSTRUCTION

- Heavy-duty steel
- WLL: 250kg
- Fitted with self-closing gates
- Designed and engineered to safely access the bucket pins at the front of the Komatsu WA1200 Loader



### KOMATSU WA1200 ACCESS AND PROTECTION

Part No. 5501654



#### CONSTRUCTION

- Heavy-duty aluminium
- Weld on steel base plates
- Handrails thread on to steel blocks welded to WA1200
- Handrails finished in Y14 safety yellow

“ **MAKING  
MAINTENANCE  
ON-SITE SAFE,  
EFFICIENT AND  
EASY** ”



# KOMATSU WA1200 WHEEL LOADER

## KOMATSU WA1200 COMPLETE STAND SET

Part No. 5600166

### CONSTRUCTION

- Heavy-duty steel
- Includes 3 stands
- Fully engineered and certified
- Can be painted in accordance with the owner's specification

#### SMALL STAND

WLL: 200T

Height: 840mm

#### MEDIUM STAND

WLL: 200T

Height: 1130mm

#### LARGE STAND

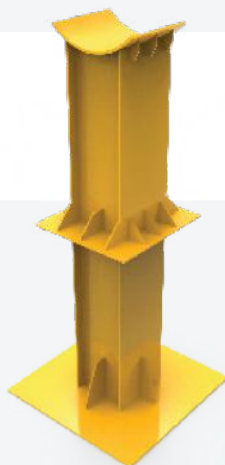
WLL: 200T

Height: 1400mm



## KOMATSU WA1200 TORQUE TUBE SUPPORT STAND

Part No. 5000013



### CONSTRUCTION

- Heavy-duty aluminium
- SWL: 80 Tonne
- Height: 3500mm or 3700mm
- Curved top
- Fully engineered and certified

## 80 TONNE BOOM SUPPORT STAND

Part No. 5501052



### CONSTRUCTION

- Heavy-duty aluminium
- SWL: 100 Tonne
- Height: 3500mm or 3700mm
- Lifting eyes for ease of transport

## KOMATSU WA1200 WHEEL LOADER

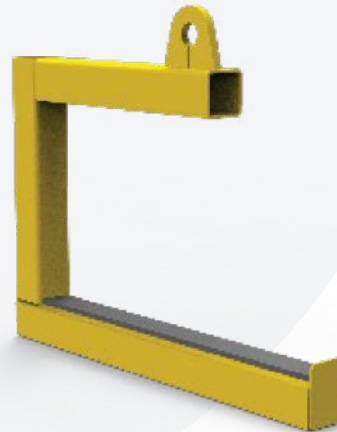
### KOMATSU WA1200 DRIVESHAFT WORK STAND Part No. 5501122



#### CONSTRUCTION

- Heavy-duty steel
- WLL: 300kg
- Finished in Y-14 safety yellow
- Load rings attached

### KOMATSU WA1200 BUSH LIFTING TOOL Part No. 5501693



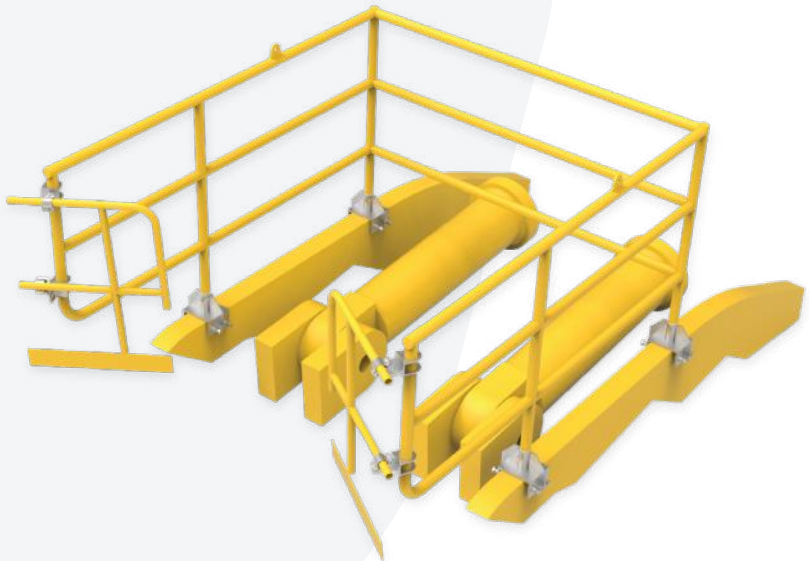
#### CONSTRUCTION

- Heavy-duty steel
- WLL: 100kg
- Finished in Y-14 safety yellow
- Rubber insertion

### LOADER BOOM FALL PROTECTION Part No. 5503681

#### CONSTRUCTION

- Heavy-duty aluminium
- Height: 1180mm
- Clamps to chassis with hand bolts
- Powder coated in Y-14 safety yellow
- Suits both Komatsu WA1200 and CAT 994 loaders



# KOMATSU PC4000 / PC5500 EXCAVATOR

## KOMATSU WA1200 TREADLE ACCESS PLATFORM SET

Part No. 5502821

### CONSTRUCTION

- Heavy-duty aluminium
- WLL: 350kg
- Height: 2850mm
- Non-slip stairway and work area
- Large industrial castors and leveling jack
- Self-closing gate
- Fitted with forklift slots
- Bolt-on safety handrails



## PUMP ROOM UNDERSIDE ACCESS PLATFORM

Part No. 5502859

### CONSTRUCTION

- Heavy-duty steel and aluminium
- WLL: 200kg
- Non-slip stairway and work area
- Self-closing gate
- Safety handrails
- 8' x 5' trailer
- Oil drain bund inside trailer with evac point



# KOMATSU PC4000 / PC5500 EXCAVATOR

## KOMATSU PC4000 AND HITACHI EX5500 PUMP ROOM ACCESS PLATFORM

Part No. 5502822

### CONSTRUCTION

- Heavy-duty aluminium
- WLL: 400kg
- Height: 4100mm
- Non-slip stairway and work area
- Large industrial castors and leveling jacks
- Self-closing gate
- Safety handrails







# LETOURNEAU MACHINE RANGE

 [www.bendtechgroup.com.au](http://www.bendtechgroup.com.au)



## LETOURNEAU L1850 WHEEL LOADER

### LETOURNEAU L1850 LOWER ARTIC ACCESS PLATFORM

Part No. 5504617

#### CONSTRUCTION

- Heavy-duty aluminium
- WLL: 250kg
- Height: 1150mm
- Heavy-duty caster wheels
- Heavy-duty jacking stands
- Drop bar gate
- Fitted with forklift slots



### LETOURNEAU L1850 RH SIDE ENGINE ACCESS PLATFORM

Part No. 5504616

#### CONSTRUCTION

- Heavy-duty aluminium
- WLL: 250kg
- Height: 1400mm
- Heavy-duty caster wheels
- Heavy-duty jacking stands
- Drop bar gate
- Fitted with forklift slots



### LETOURNEAU L1850 HV CABINET ACCESS PLATFORM

Part No. 5504580

#### CONSTRUCTION

- Heavy-duty steel
- WLL: 250kg
- Height: 1400mm
- Heavy-duty caster wheels
- Heavy-duty jacking stands
- Drop bar gate
- Fitted with forklift slots



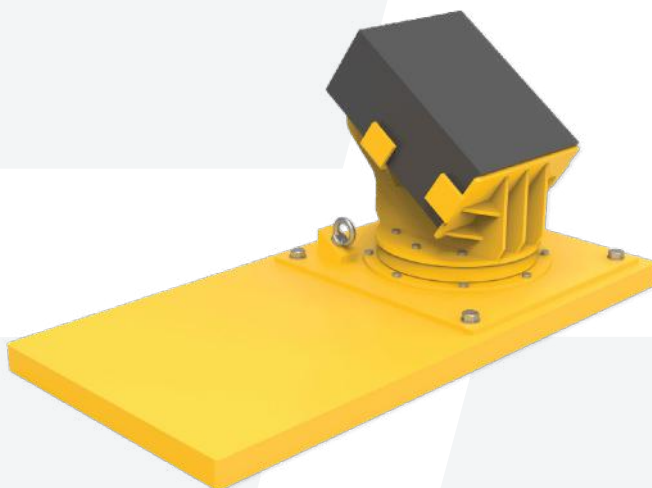
## LETOURNEAU L1850 WHEEL LOADER

### LETOURNEAU L1850 LIFT CYLINDER BLOCK CRADLE

Part No. 5502241

#### CONSTRUCTION

- Heavy-duty steel
- WLL: 200kg
- Fitted with tie-down lugs
- Mounted to a turntable for easy angle adjustment



### LETOURNEAU L1850 BUCKET STAND

Part No. 5502242

#### CONSTRUCTION

- Heavy-duty steel
- WLL: 100 Tonne
- Height: 1050mm
- Fitted with forklift slots
- 4 x lifting lugs
- Finished in Y-14 safety yellow



## LETOURNEAU L2350 WHEEL LOADER

### LETOURNEAU L2350 SIDE ACCESS PLATFORM

Part No. 5501574

#### CONSTRUCTION

- Heavy-duty aluminium
- WLL: 250kg
- Height: 4350mm
- LH and RH configuration
- Non-slip stairway and work area
- Levelling jacks for uneven ground
- Self closing gate at top of stairs
- Removable handrails



### LETOURNEAU L2350 ARTIC AREA ACCESS PLATFORM

Part No. 5501580

#### CONSTRUCTION

- Heavy-duty aluminium
- WLL: 250kg
- Height: 3100mm
- Heavy duty castor wheels
- Outriggers with stability jacks
- Platform bolts together in a top and bottom section
- Self-closing gate at top of stairs and boom rail at rear



### LETOURNEAU L2350 RH CHASSIS ACCESS PLATFORM

Part No. 5501766

#### CONSTRUCTION

- Heavy-duty steel
- WLL: 250kg
- Slide-out handrail for extra protection
- Non-slip stairway and work area
- Wide Stairway for easy access
- Self-closing doors
- Safety handrails





# LETOURNEAU L2350 WHEEL LOADER

## LETOURNEAU L2350 LH CHASSIS ACCESS PLATFORM

Part No. 5501765

### CONSTRUCTION

- Heavy-duty aluminium
- WLL: 250kg
- Height: 3550mm
- Slide-out handrail for extra protection
- Self closing gate
- Wide Stairway for easy access
- Heavy duty caster wheels



## LETOURNEAU L2350 ARTIC SHORT ACCESS PLATFORM SET

Part No. 5502214

### CONSTRUCTION

- Heavy-duty aluminium
- WLL: 150kg
- Height: 1785mm
- Non-slip stairway and work area
- Levelling jacks for uneven ground
- Self-closing gate at top of stairs
- Removable handrails



## LETOURNEAU L2350 AIRCON CONDENSOR ACCESS PLATFORM

Part No. 5501891

### CONSTRUCTION

- Heavy-duty steel
- Rubber on base plates for stability when on deck
- Self-closing doors
- Safety handrails



## LETOURNEAU L2350 WHEEL LOADER

### LETOURNEAU L2350 LH - RH STRUT REMOVAL PLATFORM

Part No. 5501735

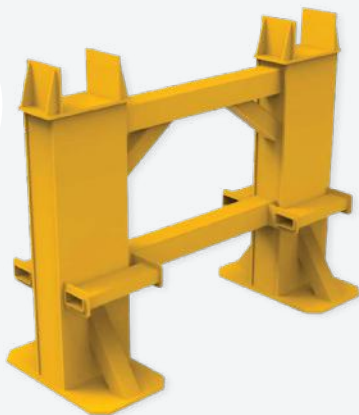


#### CONSTRUCTION

- Heavy-duty aluminium
- Suits left and right hand configurations
- Stability jacks
- Removable handrails and Removable step
- Double self-closing doors

### LETOURNEAU L2350 LIFT ARM STAND

Part No. 5501586



#### CONSTRUCTION

- Heavy-duty steel
- WLL: 200kg
- Certified and compliant with Australian Standards
- Finished in Y14 safety yellow

### LETOURNEAU L2350 FRONT PIN BASE

Part No. 5501736



#### CONSTRUCTION

- Heavy-duty aluminium
- Fixed on the front section
- Handrails for safe access
- Certified and compliant with Australian Standards

### LETOURNEAU L2350 ARTIC AREA SAFETY GATE

Part No. 5602007



#### CONSTRUCTION

- Heavy-duty steel
- Height: 1535mm
- Hi-spec surface treatment finish in machine colour or Kawasaki green
- Enhance personnel protection in the artic area



# LIEBHERR MACHINE RANGE

 [www.bendtechgroup.com.au](http://www.bendtechgroup.com.au)



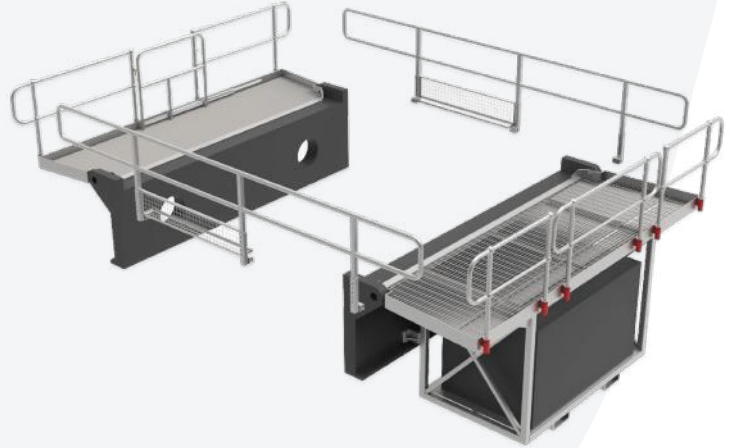
# LIEBHERR 996 WHEEL LOADER

## LIEBHERR 996 SLEW BEARING CHANGEOUT KIT

Part No. 5501448

### CONSTRUCTION

- Heavy-duty steel
- Certified and compliant with Australian Standards
- Hot-dip galvanised



## LIEBHERR 996 TRACK MOUNT ACCESS PLATFORM

Part No. 5501409

### CONSTRUCTION

- Heavy-duty aluminium
- Fitted with self-closing gates
- Fitted with toolbox
- Fitted with rigging storage



## LIEBHERR 996 BUCKET ACCESS PLATFORM

Part No. 5501334

### CONSTRUCTION

- Heavy-duty steel
- WLL: 250kg
- Fitted with self-closing gates
- Levelling jacks

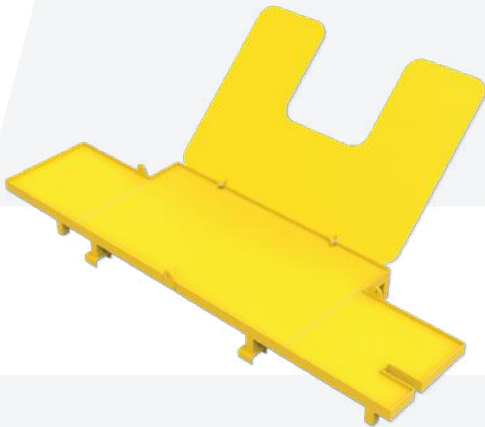




# LIEBHERR 996 WHEEL LOADER

## LIEBHERR 996 BOOM ARCH HOSE ACCESS PLATFORM

Part No. 5501000

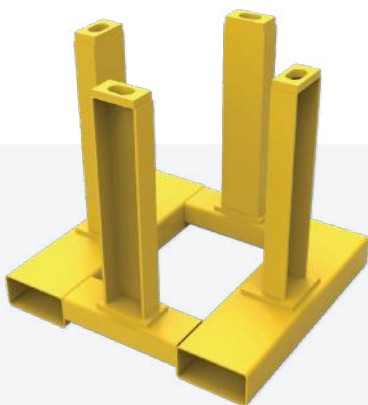


### CONSTRUCTION

- Heavy-duty aluminium
- WLL: 150kg
- Finished in Y-14 safety yellow
- Splits into two halves for ease of transport and fitment

## LIEBHERR 996 SLEW DRIVE STAND

Part No. 5501354



### CONSTRUCTION

- Heavy-duty steel
- Height: 700mm
- Painted in Y14 safety yellow
- Fitted with forklift slots

## LIEBHERR 996 ADJUSTABLE SAFETY HANDRAIL

Part No. 5501449

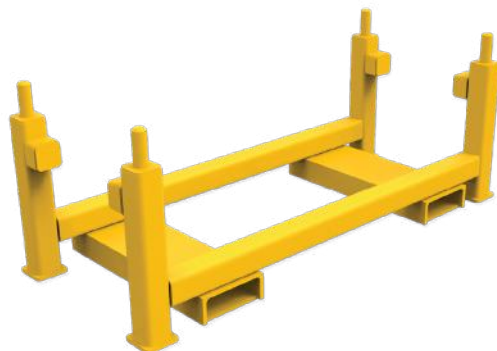


### CONSTRUCTION

- Heavy-duty aluminium
- Handrails painted Y14 safety yellow
- Locking bolts in 200mm increment up to 1000mm

## LIEBHERR 996 TRACK GUIDE STORAGE FRAME

Part No. 5500992



### CONSTRUCTION

- Heavy-duty steel
- WLL: 1200kg (2x 600kg)
- Length: 1385mm
- Width: 595mm
- Height: 540mm
- Finished in Y-14 safety yellow

## LIEBHERR 996 WHEEL LOADER

### LIEBHERR 996 AIR FILTER STORAGE BOX

Part No. 5503275

A heavy duty storage box to mount the top of the Liebherr 996 Excavator designed and engineered for the storage of spare air filters.

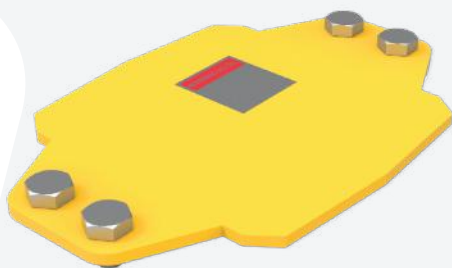
#### CONSTRUCTION

- Heavy-duty steel
- Length: 1390mm
- Width: 1310mm
- Height: 1360mm
- Fitted with 2x rubber sealed doors
- Dust and waterproof
- Pressed galvanised steel sheet construction



### LIEBHERR 996 SLEW RING DRIVE COVER

Part No. 5602063

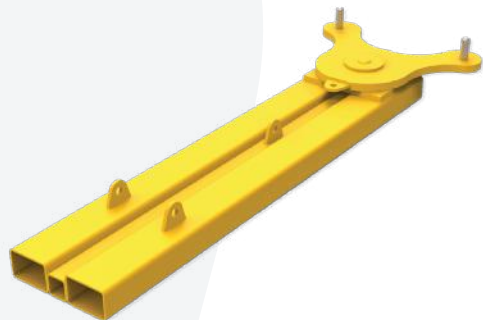


#### CONSTRUCTION

- Heavy-duty steel
- Length: 352mm
- Width: 235mm
- Height: 8mm
- Certified and compliant with Australian Standards

### LIEBHERR 996-9400 TRACK GUIDE LIFTING FRAME

Part No. 5414105



#### CONSTRUCTION

- Heavy-duty steel
- WLL: 600kg
- Length: 1935mm
- Finished in Y-14 safety yellow

# LIEBHERR 9400 EXCAVATOR

## LIEBHERR 9400 CYLINDER PROTECTION KIT Part No. 5503672

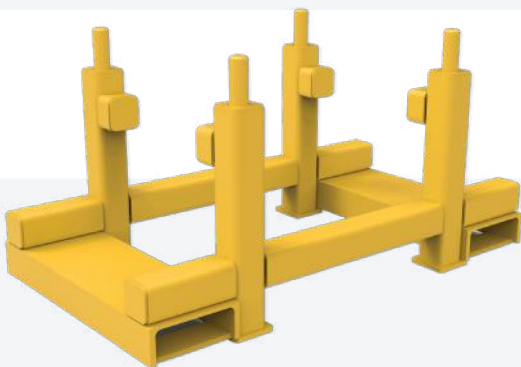
Our Liebherr 9400 Cylinder Protection System is designed and engineered to minimise damage of the hydraulic rams during operation. The cover is a proven design in the Pilbara, providing a cost-effective complete cover of the ram with no excess weight or operative restriction.

### CONSTRUCTION

- Heavy-duty steel
- Extremely robust, flexible rock deflection
- Provides full cover to the ram with no excess weight or restriction
- Stocked off-the-shelf ready for despatch
- Easy to install



## LIEBHERR 9400 TRACK GUIDE STAND Part No. 5501795



### CONSTRUCTION

- Heavy-duty steel
- WLL: 600kg
- Certified and compliant with Australian Standards
- Blasted and finished in Y14 safety yellow

“  
**MAKING  
MAINTENANCE  
ON-SITE SAFE,  
EFFICIENT AND  
EASY**  
”

## **VOLVO** **L120F WHEEL LOADER**



A safe, certified and compliant access platform designed and engineered for the Volvo L120F Wheel Loader

### **CONSTRUCTION**

- Heavy-duty aluminium
- Left and right-hand platforms for easy access on both sides of the loader
- Non-slip stairway and work area
- Safety handrails
- Overhangs for easy access
- Easy to move around the workshop while the loader is serviced
- Heavy duty caster wheels to detail



**VOLVO L120F**  
**ACCESS PLATFORM**  
Part No. 5501968



**TEREX**

# MT4400 DUMP TRUCK



A Terex MT4400 Trolley Mounted Steering Pump Removal Tool designed and engineered for safe, efficient and easy maintenance.

## CONSTRUCTION

- Heavy-duty steel
- WLL: 300kg
- Length: 1000mm
- Width: 540mm
- Height: 530mm excluding trolley
- Finished in Y-14 safety yellow
- Fitted with lifting/tie down lug
- Designed to fix onto a scissor lift trolley



## TEREX MT4400 TROLLEY MOUNTED STEERING PUMP REMOVAL TOOL

Part No. 5504134

# WE OFFER A FULL CONSULTING, 3D SCANNING AND ENGINEERING SERVICE

Projects and the associated challenges often require custom solutions, we take pride in our CDEC system. Consultation, Design, Engineering and Construction is our holistic approach to solution development making maintenance on-site safe, efficient and easy.

## CDEC PROCESS



**CONSULTATION** We come to you and visit your site to get a hands-on feel for your project. The aim of our consultation is to listen to and understand your requirements. If the project requires it, our 3D scanning capabilities will streamline measurement and data capture. This approach allows us to develop and discuss with you on-site, possible solutions to your problem, and the benefits we can offer.



**DESIGN** After the consultation we go back to our design team to begin the development of your custom solution. Our team produce designs in CAD Design complete with all drafting documentation ensuring an advanced manufacturing process. Our process allows and encourages you to be involved in the design stage and collaborate with our highly skilled team.



**ENGINEERING** Once the design is approved, we begin the development and engineering process. This ensures that the right material is used for your project to guarantee structural and functional integrity. We provide full certification that includes WLL, load ratings, integrity reports as well as certificate plates and identifications. We design and engineer all our solutions to ensure full compliance to ensure full compliance with Australian standards.



**CONSTRUCTION** Finally, once the project is ready and certified for construction, we manufacture your solution. We test, machine, fabricate and surface treat as well as trial fit your custom project. We only manufacture high quality products that provide long lasting, safe and efficient solutions.

**DARWIN**  
08 8963 5621

**MOUNT ISA**  
07 4743 6458

**NEWMAN**  
08 9175 1164

**PERTH**  
08 9459 8600

**KALGOORLIE**  
08 9021 8300

**ADELAIDE**  
08 8231 1513