

OTTO E. LUEKING JR. SOUTH RANCH

AKA BROPHY RANCH | YUMA COUNTY, COLORADO



7,110±
TOTAL ACRES

YUMA COUNTY, CO



This landmark property has cross-fences, pivot irrigation & a cattle working facility.

For More Information:

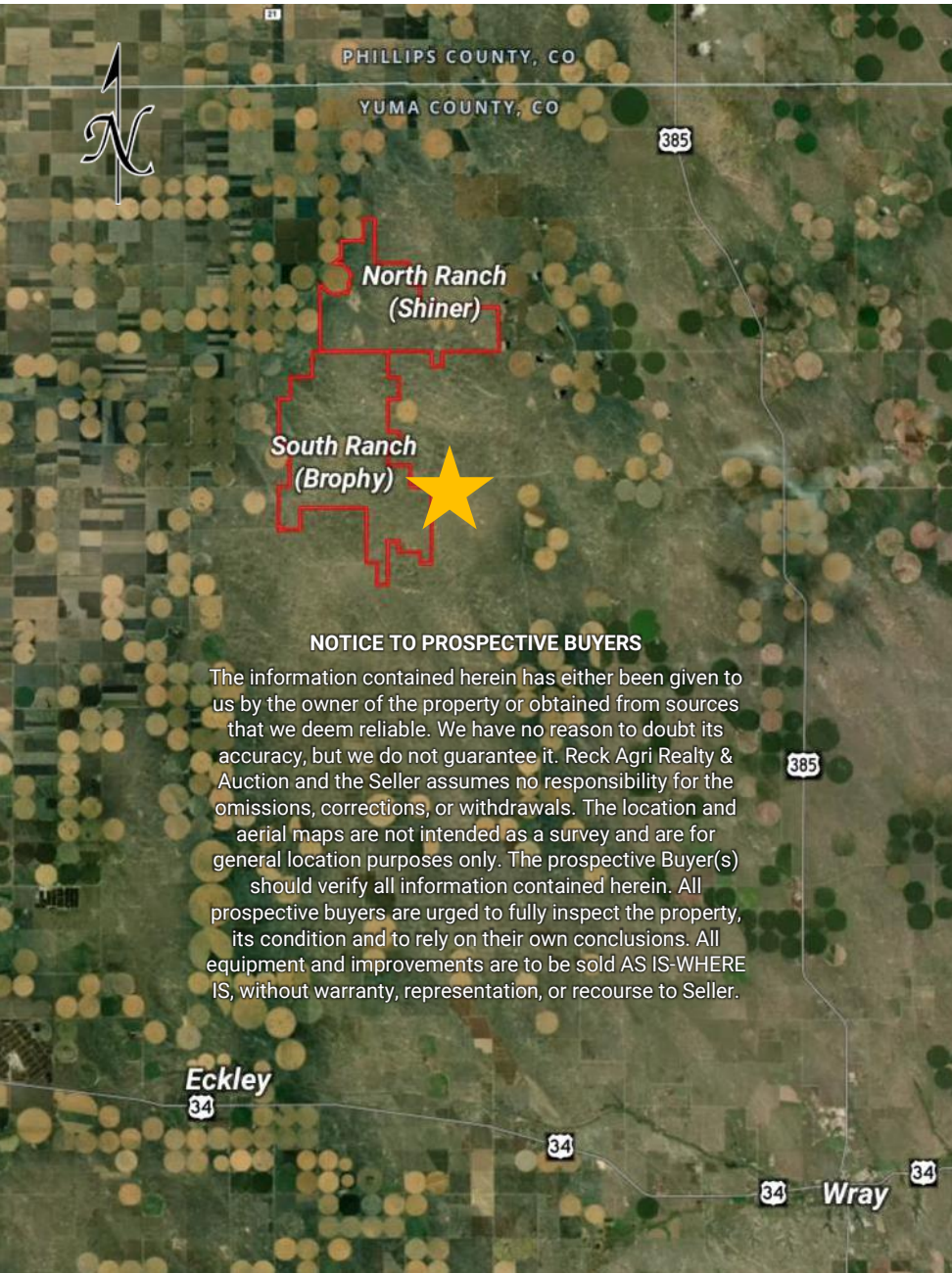
Marc Reck, Broker
marcreck@reckagri.com

Ben Gardiner, Broker Assoc.
bgardiner@reckagri.com



Office
970.522.7770
Toll Free
800.748.2589
reckagri.com

Overview & Location



OVERVIEW

The Otto E. Lueking Jr. Estate is liquidating the assets of the estate and offering this landmark local ranch (formerly known as the Brophy Ranch) for sale. Seldom does a ranch of this size become available for sale in northeast Colorado. 6,987± acres of pasture with 15 watering locations, cross-fenced, and cattle working facility. 123± acres of irrigated farm ground with 9-tower pivot, fully fenced and centrally located. OWNED mineral rights to be conveyed to Buyer.

UPDATE: Pasture available for 2025 grazing season. Possession of pivot upon closing.



**SCAN QR WITH YOUR
PHONE CAMERA**
View more details, photos,
an interactive map & more!

Center-pivot, motor & pump

Ranch Details & Map

SOUTH RANCH (aka Brophy)

7,109.9± total acres

6,987.1± acres deeded pasture

122.8± acres pivot irrigated (fully-fenced)

Location: 12-17± miles northeast of Eckley, CO

Improvements: Cattle working facility, 2 barns

Well Permit & Equipment:

#17727-FP | 400 ac ft | 9-tower Zimmatic pivot,
125 HP US/Emerson elec motor & pump

Pasture Description: Cross-fenced into 12
pastures w/ 15 livestock watering locations

1 solar well w/ pump, 2 windmills w/ tanks,
9 sub-wells w/ tanks + 3 tanks via pipeline

Mineral Rights: Seller to convey all OWNED
minerals to Buyer(s)

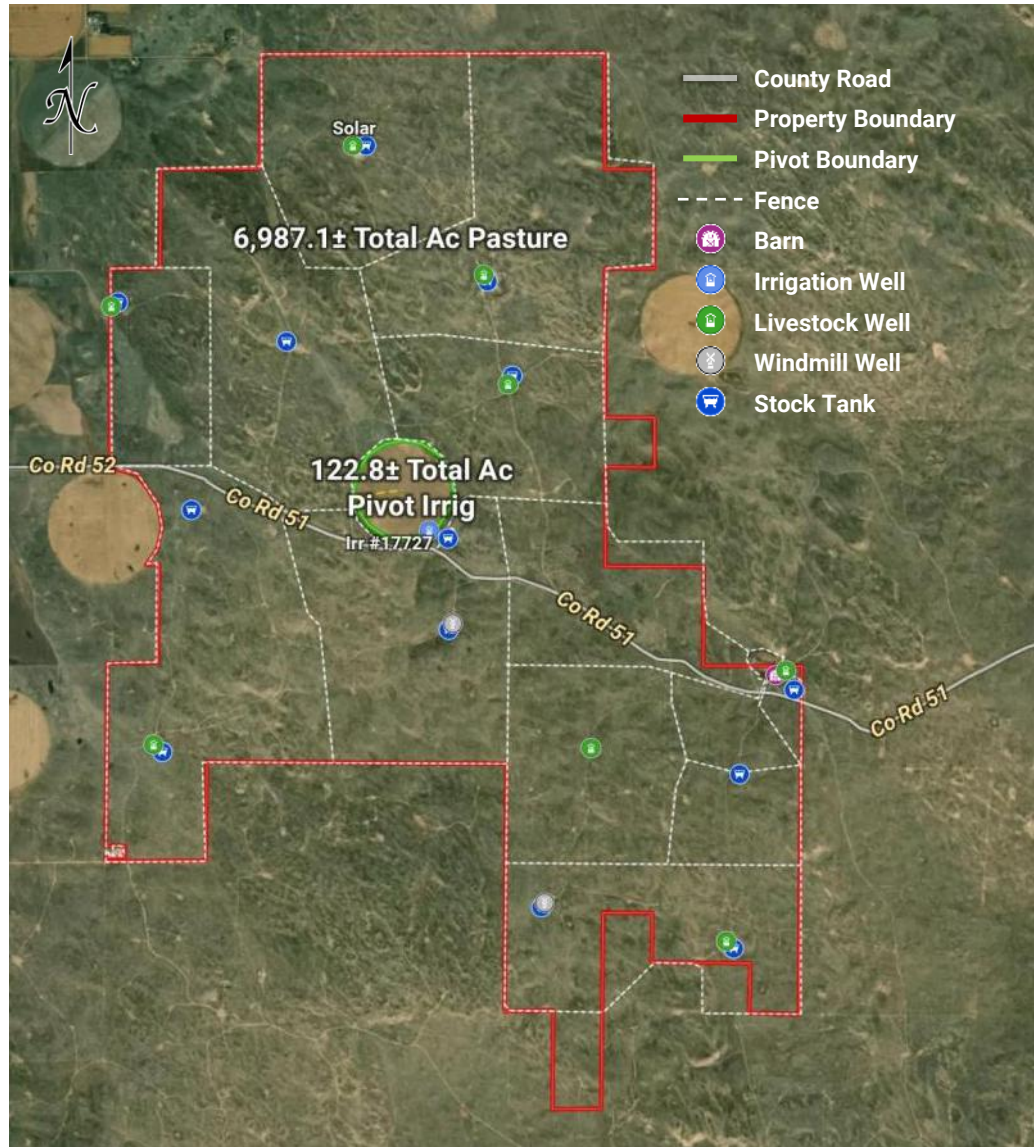
Possession: Upon closing—available for 2025
grazing season

R/E Taxes: \$6,759.92 (2024)

RRWCD/SHMD Assessment: \$3,900.00

ASKING \$5,482,000

*For more detailed information, request a Due
Diligence Packet or schedule a showing with Marc.*



The proof is in the numbers.

We connect buyers and sellers of ag real estate like no one else can - and we have the reputation and relationships to prove it.

929,846

total acres sold

18,674

auction attendees

432

successful auctions



What's inside:

**OTTO E. LUEKING JR.
SOUTH RANCH (Brophy)**

Yuma County, CO
7,110± total acres

Pasture / Pivot Irrigated /
Improvements & more!

Otto E. Lueking Jr. South Ranch (aka Brophy)

7,110± Total Acres | Yuma County, CO

NEW LISTING

Excellent, contiguous 7,110± acre ranch with 9-tower pivot & cattle working facility located 12-17± miles northeast of Eckley, Colorado. Full possession upon closing for 2025 season.

Call to setup a showing!

