

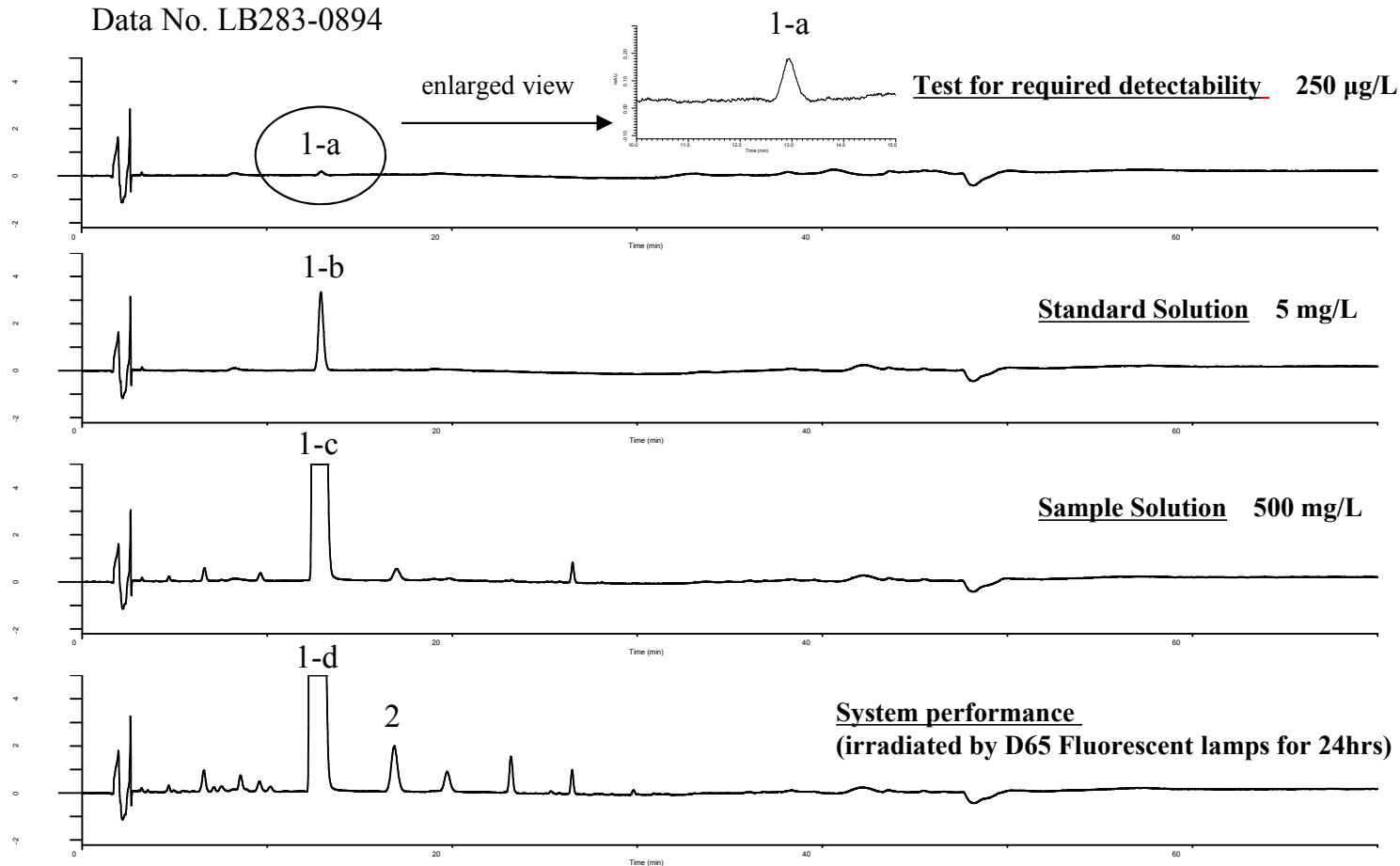
# InertSearch™ for LC

Inertsil® Applications

## Analysis of Silodosin

(Under the Condition of the Japanese Pharmacopoeia)

Data No. LB283-0894



### Conditions

**System** : GL7700 HPLC system  
**Column** : InertSustain C18  
(5 µm, 250 x 4.6 mm I.D.)  
**Column Cat. No.** : 5020-07346  
**Eluent** : A) CH<sub>3</sub>CN  
B) Buffer\*

### Analyte:

1. Silodosin  
2. Impurity

Resolution (1-d, 2) : 6.7 ( $\geq 6$ )  
RSD of the peak  
area (1-b)(%)(n=6) : 0.66 ( $\leq 2.5$ )

Time(min)	A(vol%)	B(vol%)
0.0	25	75
15.0	25	75
35.0	50	50
45.0	50	50
45.1	25	75
70.0	25	75

**Flow Rate** : 1.35 mL/min  
**Col. Temp.** : 40 °C  
**Detection** : UV 225 nm (PD7752 PDA Detector)  
**Injection Vol.** : 10 µL  
**Sample** : Standard

\*Dissolve 3.9 g of sodium dihydrogenphosphate dihydrate in 1000 mL of water.  
Adjust pH 3.4 by diluted phosphoric acid.