



— RESIDENCE —





ALL SHOWN INFORMATION, IMPRESSIONS, MATERIALS, DATA, MAY BE SUBJECT TO CHANGE







ALL SHOWN INFORMATION, IMPRESSIONS, MATERIALS, DATA, MAY BE SUBJECT TO CHANGE







ALL SHOWN INFORMATION, IMPRESSIONS, MATERIALS, DATA, MAY BE SUBJECT TO CHANGE





ALL SHOWN INFORMATION, IMPRESSIONS, MATERIALS, DATA, MAY BE SUBJECT TO CHANGE



COMMON AREAS

Designed to extend the residential experience

At the heart of the residence, the outdoor spaces unfold as a serene and refined retreat, perfectly in harmony with the surrounding tropical environment.

The swimming pool, elegantly framed by sun-drenched terraces and lush vegetation, creates a sophisticated yet inviting atmosphere an ideal setting to relax, unwind, and fully

embrace the island's natural rhythm.

On the ground floor, a contemporary fitness center, ideally positioned near the reception area, enhances the lifestyle experience by offering convenience and everyday well-being.

Designed as a natural extension of the architecture, these shared spaces elevate daily living, bringing together comfort, elegance, and a sense of effortless continuity throughout the residence.



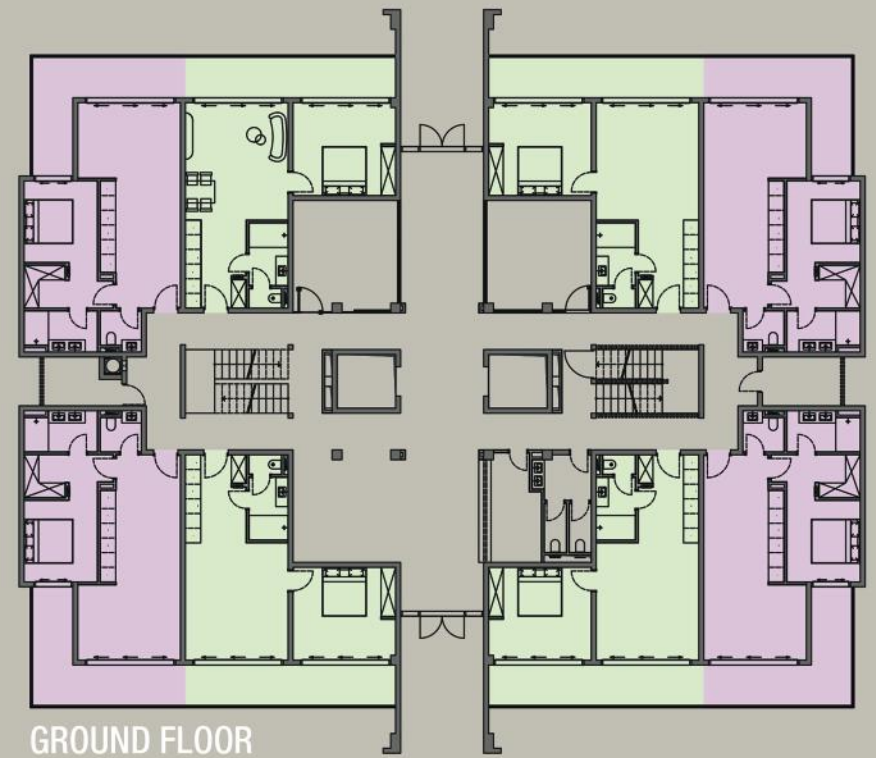
Designed for functionality and openness

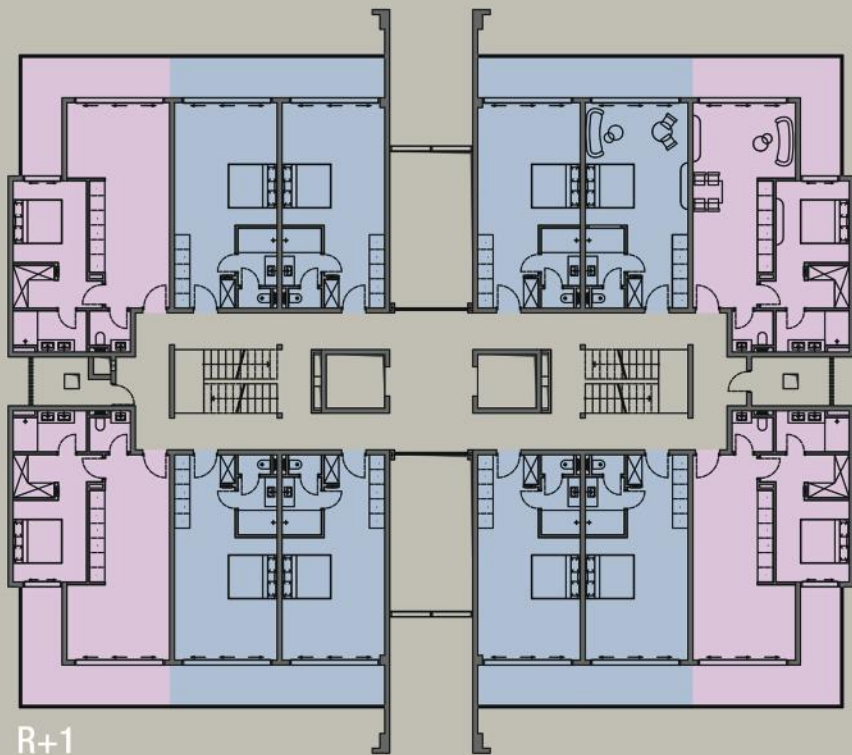
From studios to three-bedroom apartments, each residence is thoughtfully designed with a clear, efficient layout that prioritizes both comfort and practicality.

Living spaces open seamlessly to the outdoors, enhancing natural light and creating a fluid sense of space. The interior design ensures intuitive circulation, with a well-defined separation between day and night areas, offering a balanced and harmonious living experience.

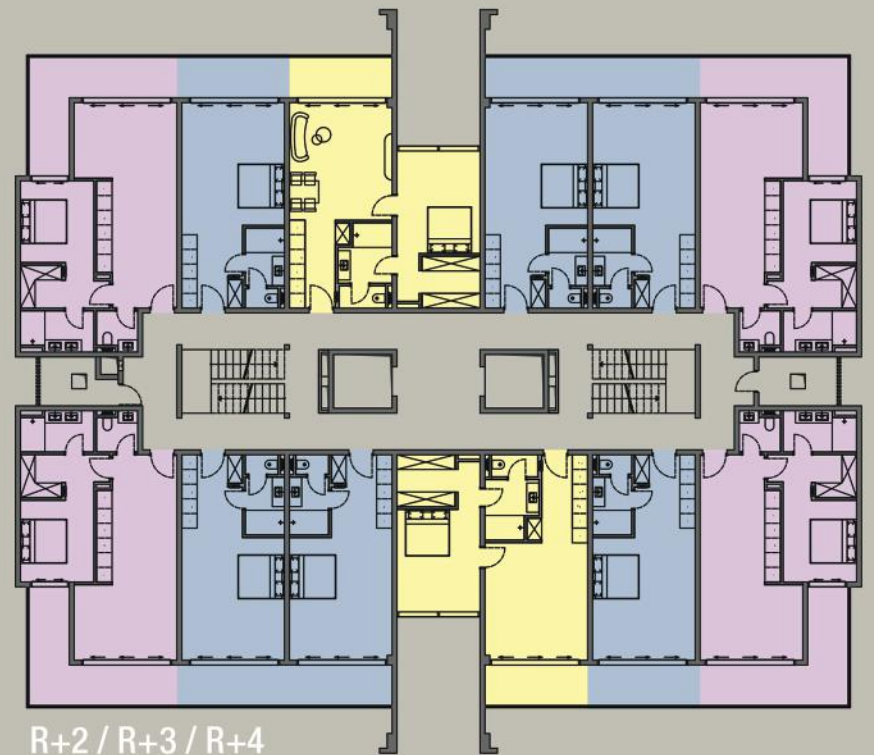
Each apartment is extended by a private outdoor space, creating a natural continuity with the surrounding environment and inviting residents to fully embrace indoor-outdoor living.

-  TYPE A
-  TYPE B
-  TYPE C
-  TYPE D
-  TYPE E
-  TYPE F
-  TYPE G

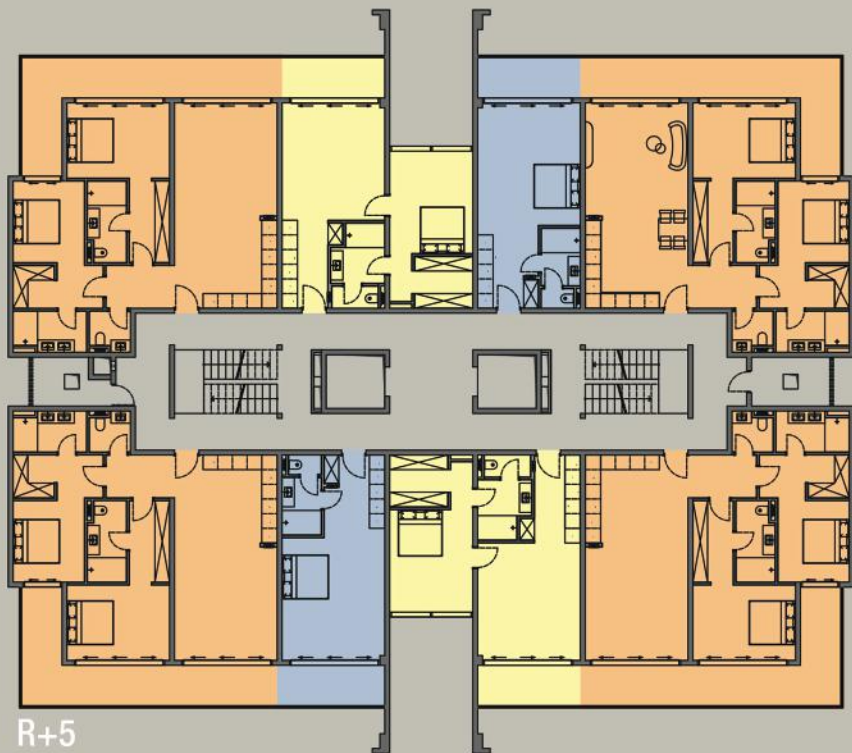




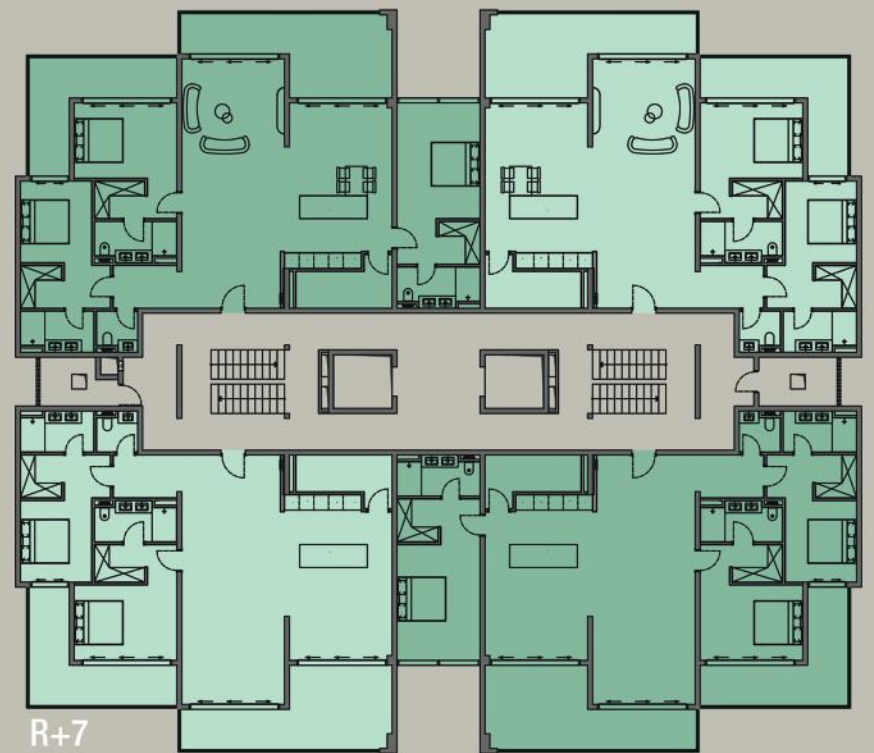
R+1



R+2 / R+3 / R+4



R+5



R+7

APARTMENT TYPE A

ONE BEDROOM

SURFACE:
73.33 m² | 789.32 ft²





ALL SHOWN INFORMATION, IMPRESSIONS, MATERIALS, DATA, MAY BE SUBJECT TO CHANGE







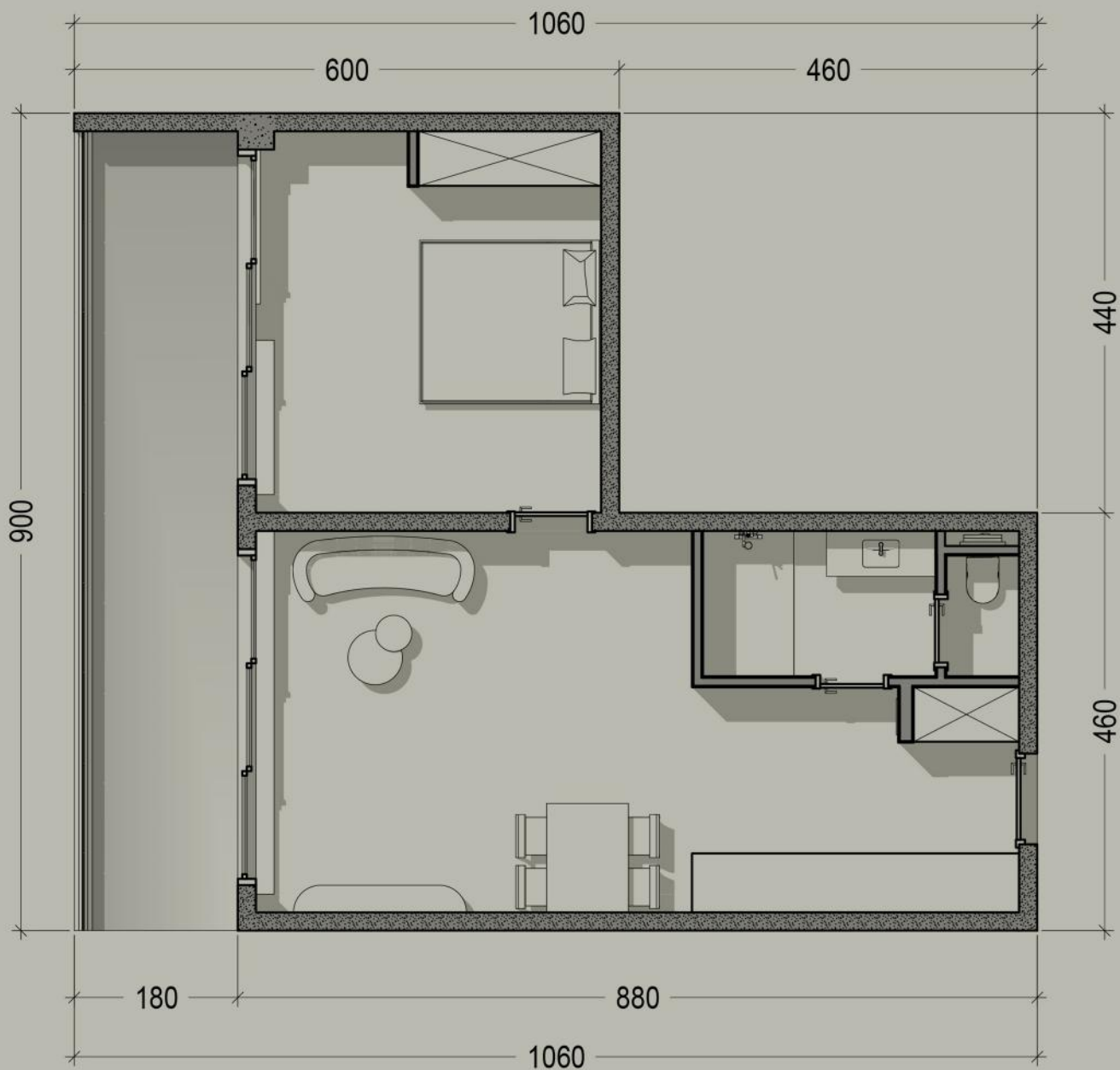




APARTMENT TYPE B

ONE BEDROOM

SURFACE:
75.16 m² | 809.02 ft²





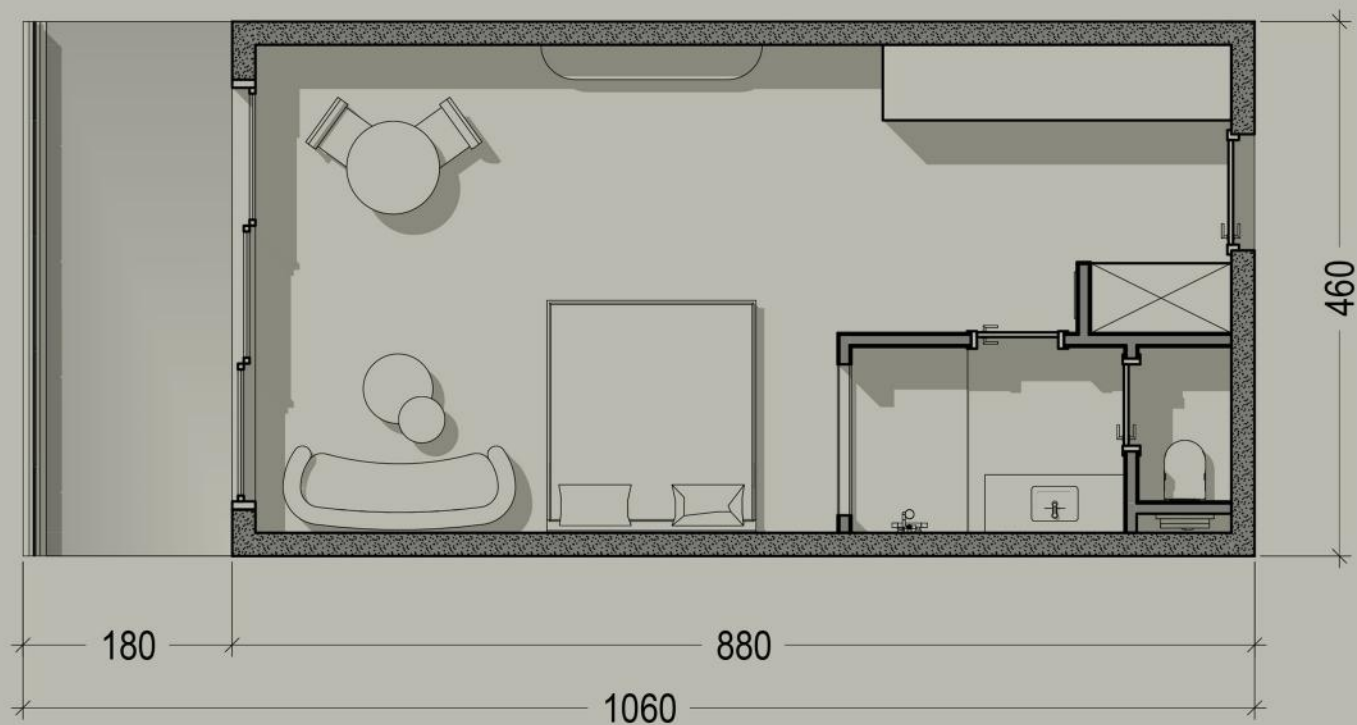
ALL SHOWN INFORMATION, IMPRESSIONS, MATERIALS, DATA, MAY BE SUBJECT TO CHANGE



APARTMENT TYPE C

STUDIO

SURFACE:
48.76 m² | 524.85 ft²







Apple TV+ interface showing the movie 'Finch' with Tom Hanks. The interface includes a search bar, a row of streaming service icons (Netflix, Prime Video, Disney+, Apple TV, YouTube, HBO Max, Amazon Prime Video, Hulu, and HBO), and a 'Recent' section with 'The Void' and 'On Now' section with 'The Blue Expanse', 'The Kill See You in Space', and 'The Pink Panther'.



APARTMENT TYPE C



ALL SHOWN INFORMATION, IMPRESSIONS, MATERIALS, DATA, MAY BE SUBJECT TO CHANGE



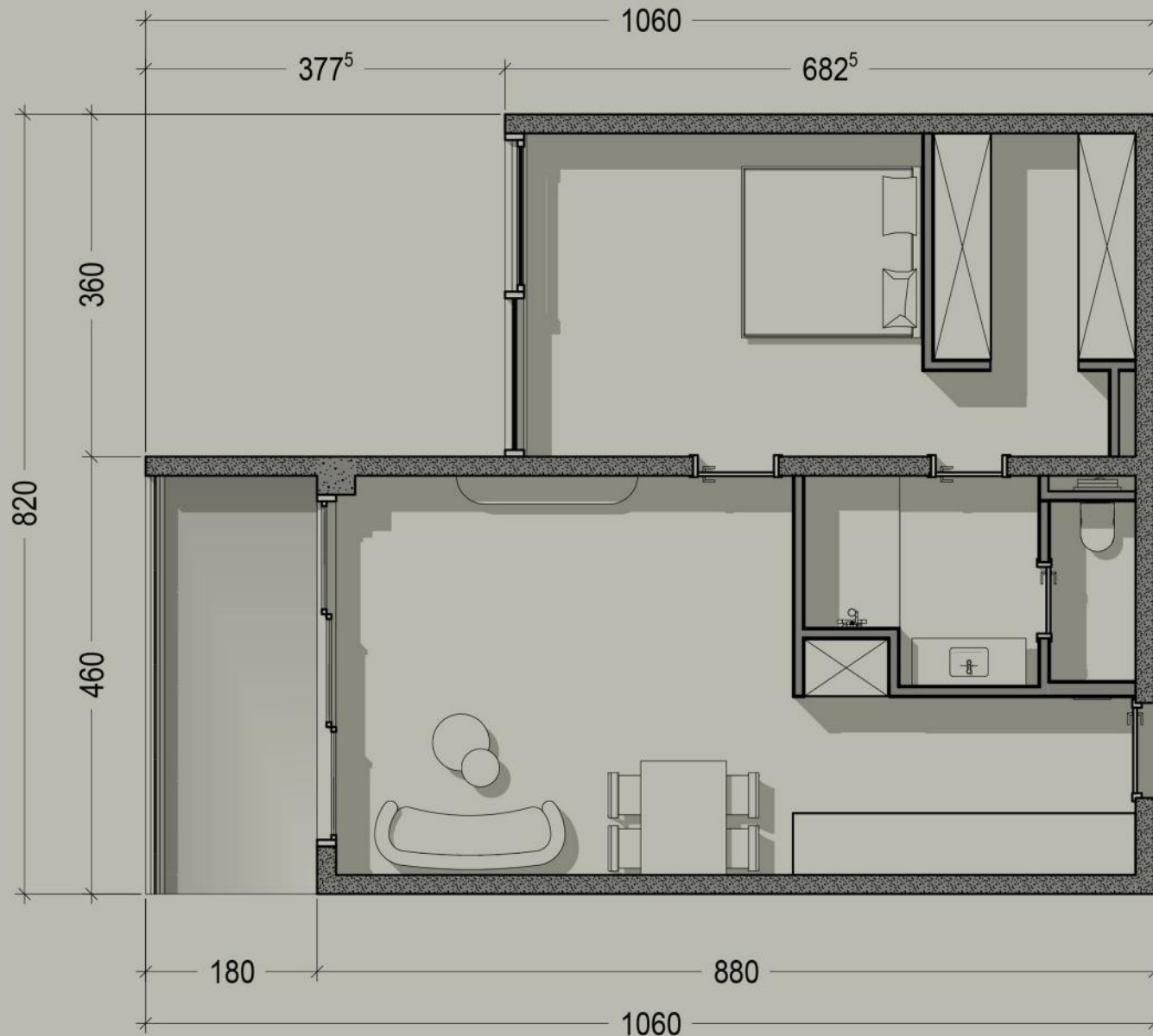




APARTMENT TYPE D

ONE BEDROOM

SURFACE:
73.33 m² | 789.32 ft²





An Apple Original Film
TOM HANKS IS FINCH
Watch Now

Apple TV+ interface showing various streaming services: Apple TV+, Hulu, Netflix, Prime Video, Disney+, YouTube, YouTube TV, HBO Max, Amazon Music, Apple Music, and Apple TV. Below the service icons, there are sections for 'Recent' (The Void) and 'On Now' (The Blue Expanse, Thrill Seekers, and a pink bird).



ALL SHOWN INFORMATION, IMPRESSIONS, MATERIALS, DATA, MAY BE SUBJECT TO CHANGE



APARTMENT TYPE E

TWO BEDROOM

SURFACE:
126.08 m² | 1,357.11 ft²





ALL SHOWN INFORMATION, IMPRESSIONS, MATERIALS, DATA, MAY BE SUBJECT TO CHANGE







APARTMENT TYPE F

TWO BEDROOM

SURFACE:
188.92 m² | 2,033.52 ft²

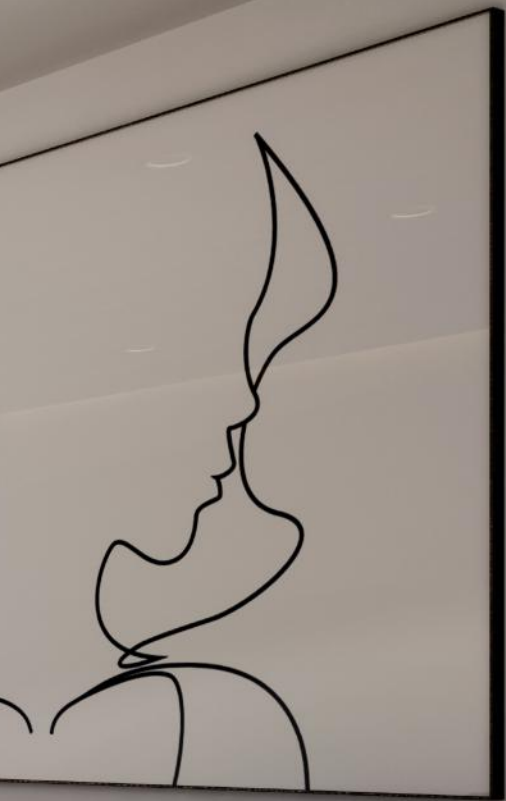




ALL SHOWN INFORMATION, IMPRESSIONS, MATERIALS, DATA, MAY BE SUBJECT TO CHANGE







APARTMENT TYPE G

THREE BEDROOM

SURFACE:
220.60 m² | 2,374.52 ft²

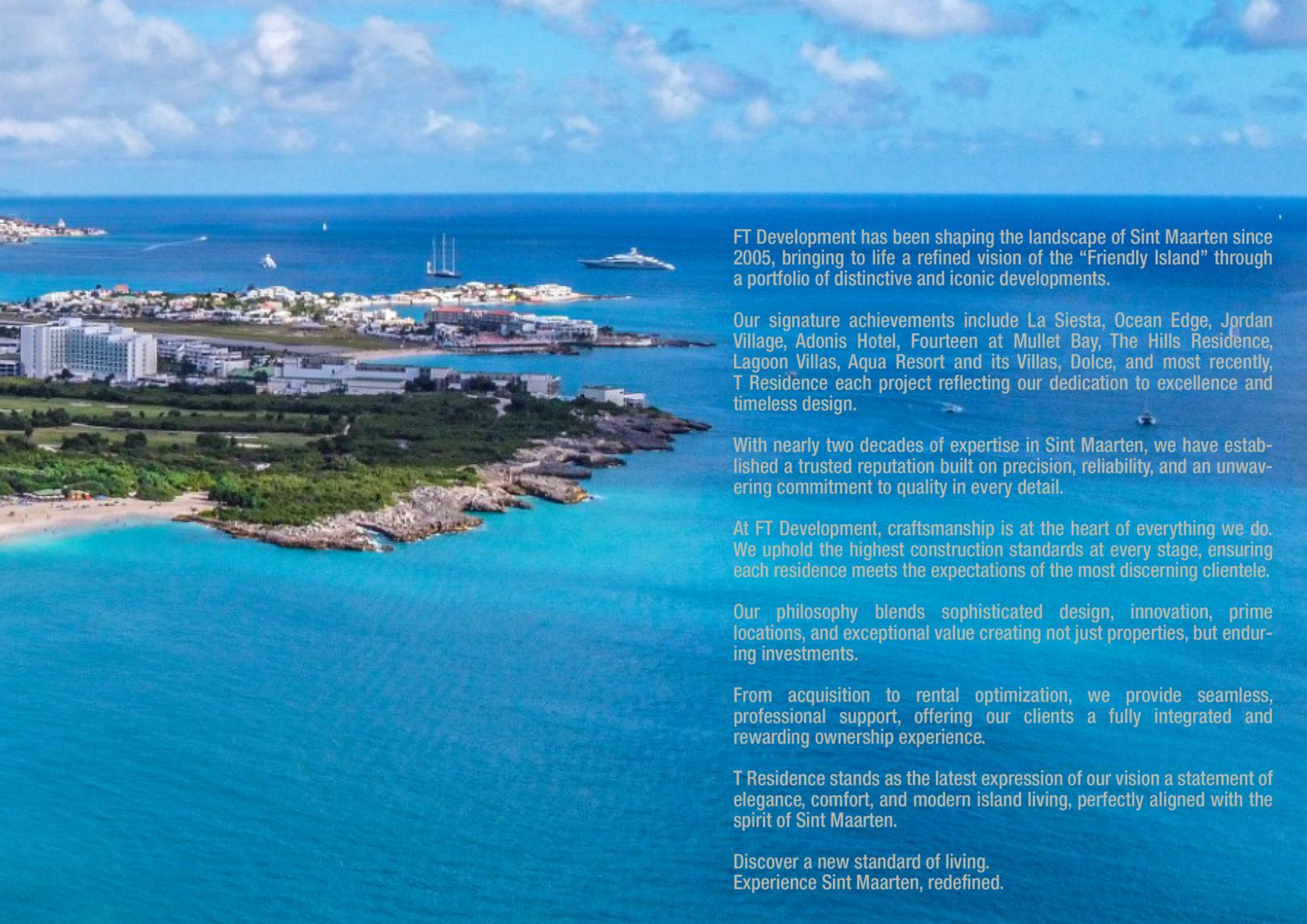




ALL SHOWN INFORMATION, IMPRESSIONS, MATERIALS, DATA, MAY BE SUBJECT TO CHANGE







FT Development has been shaping the landscape of Sint Maarten since 2005, bringing to life a refined vision of the “Friendly Island” through a portfolio of distinctive and iconic developments.

Our signature achievements include La Siesta, Ocean Edge, Jordan Village, Adonis Hotel, Fourteen at Mullet Bay, The Hills Residence, Lagoon Villas, Aqua Resort and its Villas, Dolce, and most recently, T Residence each project reflecting our dedication to excellence and timeless design.

With nearly two decades of expertise in Sint Maarten, we have established a trusted reputation built on precision, reliability, and an unwavering commitment to quality in every detail.

At FT Development, craftsmanship is at the heart of everything we do. We uphold the highest construction standards at every stage, ensuring each residence meets the expectations of the most discerning clientele.

Our philosophy blends sophisticated design, innovation, prime locations, and exceptional value creating not just properties, but enduring investments.

From acquisition to rental optimization, we provide seamless, professional support, offering our clients a fully integrated and rewarding ownership experience.

T Residence stands as the latest expression of our vision a statement of elegance, comfort, and modern island living, perfectly aligned with the spirit of Sint Maarten.

Discover a new standard of living.
Experience Sint Maarten, redefined.



M: +1 (721) 522 00 74

E: alexia@ftdevelopments.com

A: University Drive #2, Cupecoy | Sint Maarten



www.ftdevelopments.com

