

THEATRE

StreetFood Club

TERRACE 2023

SPECIAL  
MOMENTS  
START  ON  
BEAUTIFUL  
TERRACES

**SATELLIET-UK**  
hospitality furniture

INSPIRATION

# SPECIAL MOMENTS START ON BEAUTIFUL TERRACES

The terrace is more relevant than ever. Routing, layout, comfort and appearance are important factors to be successful again next year. Increasingly, terraces are becoming outdoor restaurants, with a translation of concept, atmosphere and layout that guests also experience indoors. Not only that, the terrace is a great opportunity to generate more turnover all year round.

A thriving terrace requires a professional approach and a well-kept, inviting look & feel. Is it time to invest in your terrace? Then you want to be sure that this investment takes care of your wishes and needs for the terrace and can meet your high demands for years to come. That, at least, is what we strive for. Based on our promise of premium quality, tailor-made and full service, we advise and support you from A to Z, including in the area of sustainability.

In this magazine, we present the highlights from the terrace collection for 2023: topics and trends that guarantee a perfect look on the terrace. It is full of tips, inspiration, entrepreneurial stories, new collections and, of course, timeless classics. With our inspiration and wide collection of terrace furniture, we are happy to advise you for a successful terrace season. More inspiration? Request our catalogue 2023. More than 200 pages of hospitality ambience and product inspiration, for indoors and outdoors.



Scan the QR code for  
more terrace inspiration





07

# TRENDS & INSPIRATION

## TRENDS

Romantic Retro	5
Rattan Rainbow	11
Tactile Texture	25

## INSPIRATION

Lutterzand: winterterrace	9
LLEV: new look & feel	17
Advice Routing & Lay-out	21
Smart & creative solutions	31

# COLLECTION

Rattan	7
Colourful	15
Social seating	19
Wood	23
Classy	27
Tables & table tops	29

09



23

# SUSTAINABLE

Resysta

13



## TREND

Retro with a wink, and romantic without being overly decorative.

Give way to an easy, feminine retro style full of round shapes, soft fabrics and floral designs. A touch fussy, yet cool. Round and retro, but also soft, cuddly and playful.

That is Chantilly, a chair made of curved steel, a classic design and a soft touch with cushions with fringes.





Chantilly SC

# ROMANTIC RETRO



Chantilly AC



# RATTAN TERRACE

The trendy natural colour tones can be combined extremely well with rattan. The large collection with the character of the past has the look of real rattan, but is made of plastic. This gives the furniture a durable character and makes it very suitable for both indoor and outdoor use.

The Taco serie has a black steel frame. The seat shell consists of plastic braiding (HDPE). The seat shell is available in the colours black or rattan look. All Taco models can be provided with a separate seat cushion in a fabric of your choice.

Ⓢ TACO AC



TWINE LS



TWINE HS



Ⓢ TACO SC



Ⓢ 550 SC



Ⓢ 550 AC



Ⓢ 550 HS





TWINE SC



TWINE AC



PODA HS



PANDA RELAX AC



Ⓢ TACO AC



Ⓢ TACO HS



PANDA AC



BITES AC



TWIST LSC



HELENA AC



HELENA ROCKING LAC



Owner John Meijerink



Scan the QR code for more pictures and the full interview.







# COMPLETE 4 SEASONS TERRACE

**With the new four-season terrace, the picture is complete for John and Renate Meijerink. Thanks to this showcase, their Pavilion Lutterzand can receive guests outside all year round. The terrace also means a boost to the appearance of the entire business.**

Over the past twenty years, Pavilion Lutterzand, on the edge of the nature reserve of the same name, has undergone a complete metamorphosis. There was a completely new kitchen, the halls were updated, the interior renewed. But the terrace? That had to wait. You just can't do everything at once, Meijerink knows from experience. And when he and his wife do something, they want to do it well.

Finally, it was the terrace's turn in early 2020: three weeks before the Netherlands went into lockdown, the demolition work began. "Corona was a very strange time, unfairly feeling for the hospitality industry, because construction could go on as usual. For us, that was a stroke of luck. When the hospitality industry was allowed to reopen after the first lockdown, on Whit Monday, we were 90 per cent ready. The terrace had a completely new look and feel, the picture was complete."

The new terrace was literally rebuilt from scratch. Very important was the infrastructure: walkways, various atmospheric corners, points for water and completely new electrics for the lighting plan. A canopy came from the building, with blinds in summer but only glass in winter – for nice warm seating.

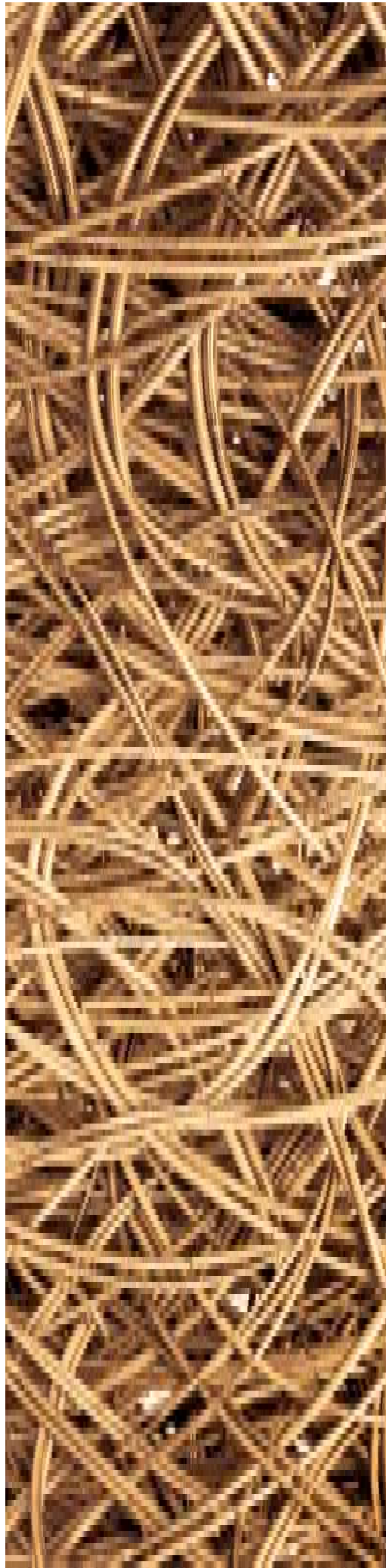
Four huge seven-by-seven-metre square parasols provided shade on the rest of the terrace. Together with the architect, the couple worked out the plans further, with an arrangement of high and low seating. Kroeze Interior helped choose and supply the furniture. "We now have 250 seats on the terrace, but could also make it 500. We deliberately don't do that. We're in the middle of nature here, we want you to experience that space and tranquillity on the terrace as well and exude the rich and burgundy of the area." That means nice sofas with green and rust brown upholstered cushions and upholstery, and lots of rattan.

And that works, they find at Lutterzand. "It invites you to enjoy yourself for a long time. People now quietly eat four courses on the terrace." The renovation ran into tons, but was worth the investment, Meijerink says. The terrace season has been stretched from five months to nine months and turnover is considerably higher, even with fewer seats than on the old terrace. The atmosphere and experience now match the rest of the business and the surrounding nature. "The great strength of this terrace: when it's full, it doesn't feel massive. But if you're sitting alone, it's still cosy and convivial."



## TREND

Rattan is here to stay, even on the terrace. Very contemporary is the addition of colour. Exciting combinations of coloured rattan with a contrasting shade for the frame. Twine already came in natural and black, but is now also available in a burgundy frame with pink wicker, or burgundy rattan with a terra coloured frame and laurel/green, in two shades of green. Finish off the terrace with the Twist lounge chair with a seat cushion in a fabric of your choice.





Twist LSC

# RATTAN RAINBOW



Twine AC



# SUSTAINABLE TERRACE

When a terrace is outside for longer, it has more to endure. Material is therefore important. More and more tables and chairs are made of Resysta, a durable wood substitute made of rice husk, rock salt and mineral oils.

The result is a material that is resistant to all weather conditions and therefore requires little maintenance. Ideal for a terrace that is outside a lot or all the time.



Scan the QR code for more about Resysta.



  FIRENZE RESYSTA AC



  FIRENZE RESYSTA SC




  FIRENZE RESYSTA AC



  IVELLA 140 T



  IVELLA 200 HT



  IVELLA 80 HT



  IVELLA 80 T

# THE BETTER WOOD



 CLOUD RND T



60%  
rice husks

22%  
rock salt

18%  
mineral oils

Resysta is an innovative and sustainable material which is made from organic residual waste. This consists mainly rice husk, but also includes rock salt and mineral oils. It has the look and feel of wood with the advantages of plastic.



 CLOUD T



 LIFE CORNER LB | LIFE LB



 LIFE DINER B



 LIFE CORNER LB | LIFE LB



# MIX & MATCH WITH COLOUR

More colour is allowed! Popular are warm colours and those with a natural touch, such as ochre yellow, grey green, terra and deep sea blue. Mix and match with colours for a terrace that impresses.

The Girola is made entirely of aluminium, stackable and available in various colours. Unique is the 4 mm wall thickness of the aluminium back legs and the reinforced slats on the chair. This makes the chair very solid even when used intensively.

 GIROLA AC



 GIROLA SC



  GIROLA AC



 NOTO SC



 25.25 AC



CANNES SC



CANNES AC



**NEW** (S) NUTA HS



**NEW** (S) NUTA SC



**NEW** (S) NUTA AC



CANNES HS



LUGANO HS



LUGANO LS



**NEW** TWINE AC



**NEW** TWINE AC





Owner Mike Vos



Scan the QR code for more pictures and the full interview.







# LOUNGING AT THE HARBOUR

**Coffee and wine bar LLEV brings city atmosphere to picturesque Middelharnis: a hit. Since moving to the renovated marina in 2020, the success is complete. "Now you can enjoy the same look and menu on the Haringvliet as inside."**

Mike Vos worked for many years at La Place, where he was responsible for Food & Retail. After the takeover by Jumbo, it was time for him to change tack. "I wanted to do something different, and live within cycling distance of my work from now on," he says. That worked out. "We started in 2018, in a shopping street around the corner here. Apart from two tables in front of the door, there was no terrace. LLEV stands for Living, Latte e Vino: a cosy atmosphere is super important, with good coffee, tasty wine and matching snacks. We are a bit more modern than Middelharnis was used to, with avocado dishes on the menu and lots of vegetarian options." It was a success from the very first moment. "Guests appreciated our addition, alongside the existing catering industry in Middelharnis," he says. The desire to expand took shape when a restaurant on the harbour became available, with plenty of room for a terrace. The big challenge was to extend that special atmosphere of LLEV - the long, upholstered benches, rich colours like blue and orange combined with black and grey - outside as well. "The idea was to go 'inside out'. Inside we have a lot of sofas, we wanted the same outside."

As a sparring partner in the design, Vos engaged a stylist, Ilse van der Have. "A young designer with a tremendous feel for our style and atmosphere. She started drawing and creating mood boards right away." Against the building are now generous benches with large cushions. In front of them are benches with a woven frame and upholstery in that

typical petrol colour that also plays a leading role inside. There are also - as inside - standing tables for a high bar-seat. Rattan seats, finished in black and black tables with an anthracite top complete the picture: warm, atmospheric but also modern and hip.

LLEV on the Harbour opened just after the first lockdown and was full from day one. "We had a beautiful summer in 2020 and the terrace was also booming right away. We succeeded in extending the LLEV atmosphere to the terrace, with the wine barrel that refers to the V of 'vino' but also with an eye for all the details. So you drink the best coffee with us, always with latte art - also on the terrace. We have our own glasses with our logo on them, everything has to look good. The menu is local as much as possible, with meat from the local artisan butcher and bread from the local bakery."

Two seasons later, Vos has actually only really changed one thing about the terrace: "There are now low oval tables near the benches on the harbour terrace. It soon turned out that our guests also wanted to eat extensively in the low seating, then a real table fits better than side tables." And that perfecting actually goes on forever, the entrepreneur believes. "I'm still looking for nice solutions for sunshades. We now have awnings on the façade and two separate parasols, which I'm sure could be improved. Of course, you don't want too many poles on your terrace, but you do want maximum roofing. I haven't found a really nice solution in LLEV style yet."



# SOCIAL SEATING

Social seating is all the rage! Ideal for groups to socialise together. The comfortable lightweight Terra benches are a real eye-catcher on the terrace.

The loose cushions can be customised in a fabric of your choice to suit your terrace. The sturdy Dentro picnic tables give your terrace a unique and robust look.

Ⓢ TERRA LBA | SVEN LARGE LT | SVEN SMALL LT



SALAMANCA T



NEW SALAMANCA RND T



Ⓢ TERRA LBA



BARCA CORNER LB | BARCA LB



Ⓢ TERRA QUARTER B



Ⓢ TERRA 2 B



Ⓢ TERRA END B | TERRA B



DENTRO 4P T



DENTRO 8P T





# ROUTING & LAYOUT ADVICE

As a business owner, you want the most efficient possible layout on the terrace, without having to compromise much on seating, comfort, appearance and atmosphere. We are also happy to advise you and help you think about different set-ups for your terrace. With a flexible layout for your terrace, you can respond to the constantly changing circumstances and needs of your guests.

For example, create 'bubbles' with round benches where guests can sit together in small groups or use smaller tables to shift flexibly when the number of people changes during the day. This way, you adapt your terrace with minimal investment and effort. We are happy to advise you to ensure your terrace has an optimal routing & layout. Please contact us for advice.



Scan the QR code for more terrace inspiration.





GIROLA TEAK AC



GIROLA TEAK AC



LUGANO LS



LUGANO HS



AREA B | AREA T



NEW SIGMA B



AREA HB | AREA HT



NEW SIGMA HB



DUETTO SC | DUETTO T



Ⓢ NOOR



Ⓢ NOTO TEAK SC

Industrial edge



Ⓢ FUERA T | FUERA B



Ⓢ FUERA 140 B



# FOR A WOODEN TERRACE

Wood as an untreated material can be used very well outdoors. Due to its natural properties, the material takes on that characteristic grey colour with time and use.

The Noto is a compact, aluminium terrace chair in black. The seat is made of untreated teak slats. The Noto is also available in black, moss grey and terra, with the seat made of batyline instead of teak.

Ⓢ NOTO TEAK SC



## TREND

Fine textures, tactile textures with a reference to the nature. Biophilic design forms the basis for delicate but extremely strong materials and furniture. Calypso and Terra are airy but tough, cheerful and light. The powder-coated aluminium frame and latticework give this 'goddess of the sea' a summery and natural look. Light of weight and resistant to the weather.







Terra LBA

# TACTILE TEXTURE



Calypso Low LAC



Calypso High LSC



# THE CLASSY COLLECTION

Extend the restaurant experience to the terrace with this 'classy' selection of terrace furniture. All these models guarantee an experience with class.

The Roman Rope is a new addition in which the batyline back and seat make way for woven textile rope. The lightweight aluminium chair is extremely comfortable where the colour combination and material create a playful look.

**NEW** ROMAN ROPE AC



MICHELLE SC



MICHELLE AC



MICHELLE HS



**NEW** ROMAN ROPE AC



ROMAN AC



**NEW** SAMI AC





MACY AC



MACY HS



AUSTIN AC



TOSCANA AC



FIGARO SC



JONAS AC



PRAAG SC



PRAAG AC



Ⓢ MONTANA AC



NEW OCALA AC



NEW OCALA AC



NEW OCALA HS



VERSO 3 TB



VERSO 4 TB



LYON-3 TB



LYON-4 TB



VERSO 5 TB



PINTO TB



SPEEDO-4 TB



DOMINIQUE-3 TB



**NEW** PILON TB SMALL OUTDOOR



STABLETABLE NOUVEAU TB



STABLETABLE TB

Stable on uneven ground



STABLETABLE HTB



**NEW** PILON TB LARGE OUTDOOR



STABLETABLE TB



GENT-4 TB



TREE HT



MIKADO HT



FUERA 80 T



NEW YORK T



MAMBO-4 TB



STEEL HT

MATERIALS

# TABLE TOPS

To welcome your guests to your terrace and let them enjoy everything you have to offer in comfort, the right table should not be missing. Tall, durable, large or composed of base and top, the choice is yours.

Our extensive collection of table tops also includes a wide variety of materials. Which material suits your concept best? Do you prefer sustainable Resysta, tough aluminium, werzalit or natural teak?



Aluminium



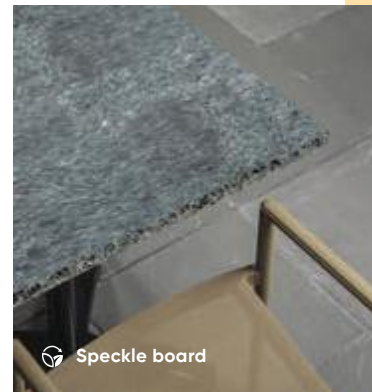
Volkern



Werzalit



Resysta



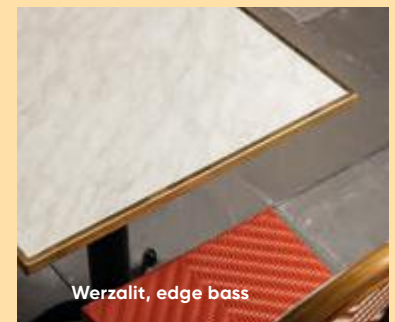
Speckle board



Iroko wood



Teak Natural



Werzalit, edge bass

INSPIRATION

# SMART & CREATIVE SOLUTIONS

All solutions that provide excellent support for flexible layout of any terrace. Terraces are increasingly furnished in a multifunctional way to meet guest needs. In this way, terraces are created that can be adapted to the circumstances of the moment. Whether it is storing, screening, or dressing up your outdoor space, these items will ensure an effective and attractive terrace. Complete the experience and create an attractive and comfortable terrace where your guests and employees feel comfortable and safe. Get to know the smart & creative solutions.



NEW BLOOM WALL

## TERRACE PARTITION & DECORATION

Create atmospheric alcoves by using terrace dividers. Not only functional, but also decorative, like the Bloom Wall. The aluminium racks are removable and alternable which creates a cheerful look on the terrace. Or let your terrace shine with the Bloom Planter. Fill the top with beautiful flowers or plants and keep space on the bottom shelf. The Terrace Divider is also an ideal space divider with a canvas with a logo, colour or print of your own choice.



TERRACE DIVIDER



RIO PILLOW CASE



BOTANIA RA



NEW BLOOM PLANTER

## 365-DAYS TERRACE

A terrace that is 'all your round' requires more than just beautiful and high-quality terrace furniture. That is why we are happy to offer you extra options for the ultimate terrace experience and, if think along with you about the best total solution for your concept.



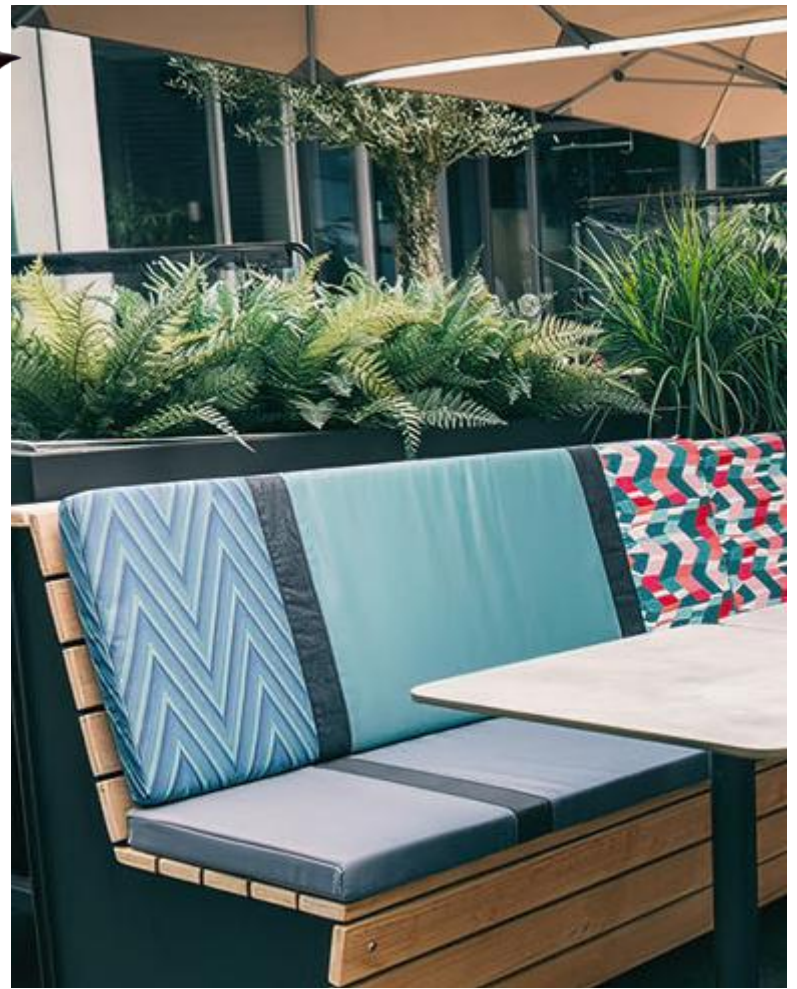


CARRIER



TERRACE CHAIN SET

SOLEIL SQ



## HEATED CUSHIONS

Heated cushions for terrace benches are the solution to replace traditional terrace heating. Not only cost-effective and sustainable, but also welcoming and very easy to use. The comfortable cushions that can heat both the seat and back are available for any lounge sofa in our terrace collection.

Choose a fabric of your choice for a personalised look and feel to suit your terrace and offer your guest the year-round comfort they like.



## SERVICE TROLLEY

Serve guests quickly from this inviting service trolley. Guaranteed to attract guests' attention and you will experience more efficiency on the terrace. The trolley is easy to move thanks to its wheels and has practical cabinets for terrace supplies. Write a nice message on the black panel for a 'personal touch'.



SERVICE TROLLEY



**NEW** NOMAD TROLLEY

# SATELLIET CATALOGUE 2023

200 pages of collection,  
atmosphere, inspiration  
and valuable information  
in one book.



Request now:  
Catalogue 2023!



Scan the QR code to  
request the catalogue.



**SATELLIET-UK**  
hospitality furniture

## Satelliet hospitality furniture UK

[www.satelliet.co.uk](http://www.satelliet.co.uk)

### UK South

Unit 2 Nexus Park  
Lysons Avenue  
Ash Vale  
Surry  
GU12 5QE  
T: 01252 541 386

### UK North

Harris House  
20 Carlyle Avenue  
Hillington Park  
Glasgow  
G52 4XX  
T: 01418 831 135

## The Netherlands

**Amsterdam** | Inspirium  
tt. Melissaweg 43  
1033 SP Amsterdam  
Tel.: +31 20 633 51 88

**Breda** | Headoffice  
Haagweg 241-243  
4812 XD Breda  
Tel.: +31 76 522 53 10

**Dalfsen**  
Korenstraat 71  
7722 RS Dalfsen  
Tel.: +31 529 43 53 35

**Proud partner of**  
Inspirium Amsterdam  
Inspirium Breda  
[www.inspirium.nl](http://www.inspirium.nl)

## International

**Belgium**  
Satelliet Belgium BVBA  
[www.satellietbelgium.be](http://www.satellietbelgium.be)

**Finland**  
Modeo Oy  
[www.modeo.fi](http://www.modeo.fi)

**Luxembourg**  
Satelliet Luxembourg  
[www.satelliet.net](http://www.satelliet.net)

**Norway**  
Satelliet Norge AS  
[www.satelliet.no](http://www.satelliet.no)

**Other Countries**  
Satelliet The Netherlands  
[www.satelliet.net](http://www.satelliet.net)